

Data Path : Z:\pestpcbsrv\HPCHEM1\ECD_Q\Data\PQ101918\
 Data File : PQ033317.D
 Signal(s) : Signal #1: ECD1A.ch Signal #2: ECD2B.ch
 Acq On : 19 Oct 2018 14:19
 Operator : SM\SJ
 Sample : J5541-04
 Misc :
 ALS Vial : 23 Sample Multiplier: 1

Instrument :
 ECD_Q
 ClientSampleId :
 101518-SIDI-E-U-B

Integration File signal 1: autoint1.e
 Integration File signal 2: autoint2.e
 Quant Time: Oct 20 01:19:34 2018
 Quant Method : Z:\pestpcbsrv\HPCHEM1\ECD_Q\Method\PQ101918.M
 Quant Title : GC EXTRACTABLES
 QLast Update : Sat Oct 20 01:08:39 2018
 Response via : Initial Calibration
 Integrator: ChemStation

Volume Inj. : 2 µl
 Signal #1 Phase : ZB-MR1 Signal #2 Phase: ZB-MR2
 Signal #1 Info : 30Mx0.32mmx 0.50µ Signal #2 Info : 30M x 0.32mm x 0.25µm

Compound	RT#1	RT#2	Resp#1	Resp#2	ng/ml	ng/ml

System Monitoring Compounds						
1) SA Tetrachlo...	4.570	3.848	40597843	28781288	15.728	16.264
2) SA Decachlor...	10.401	8.898	45542058	37061009	22.198	22.395

Target Compounds

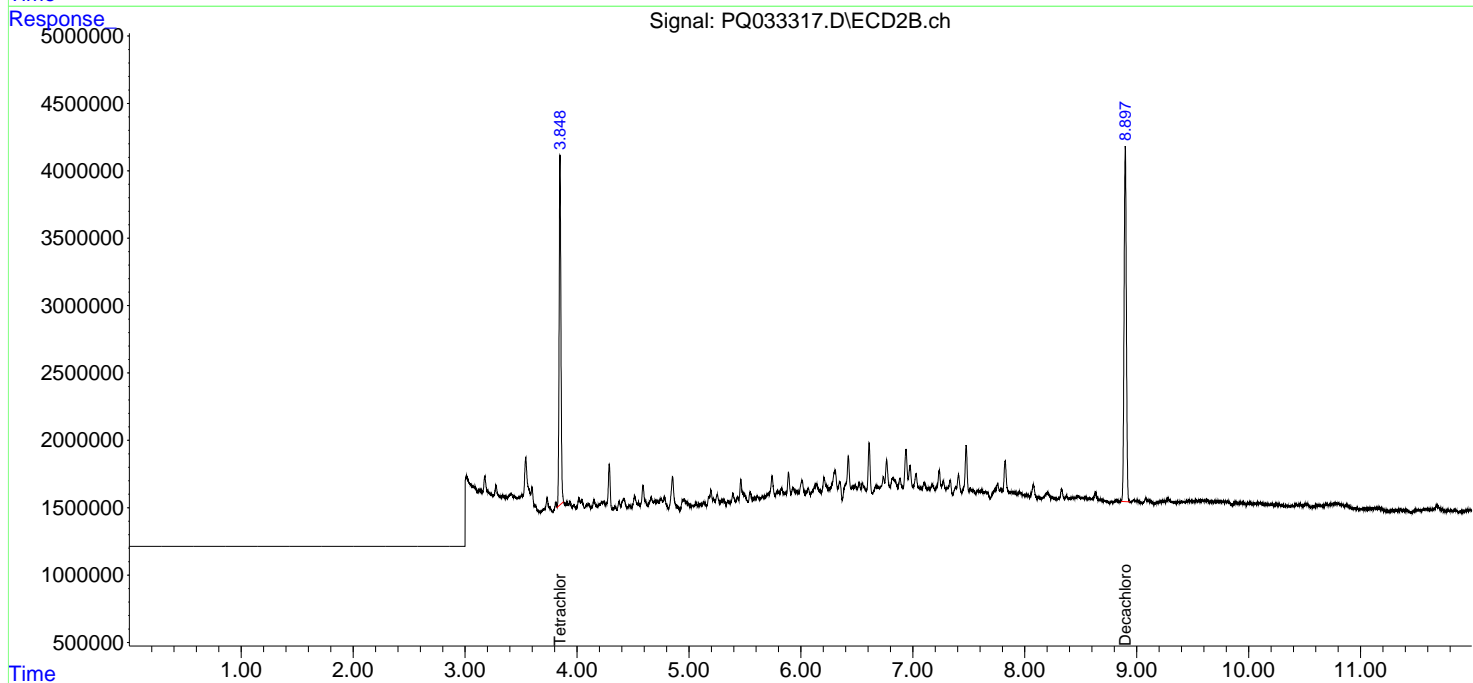
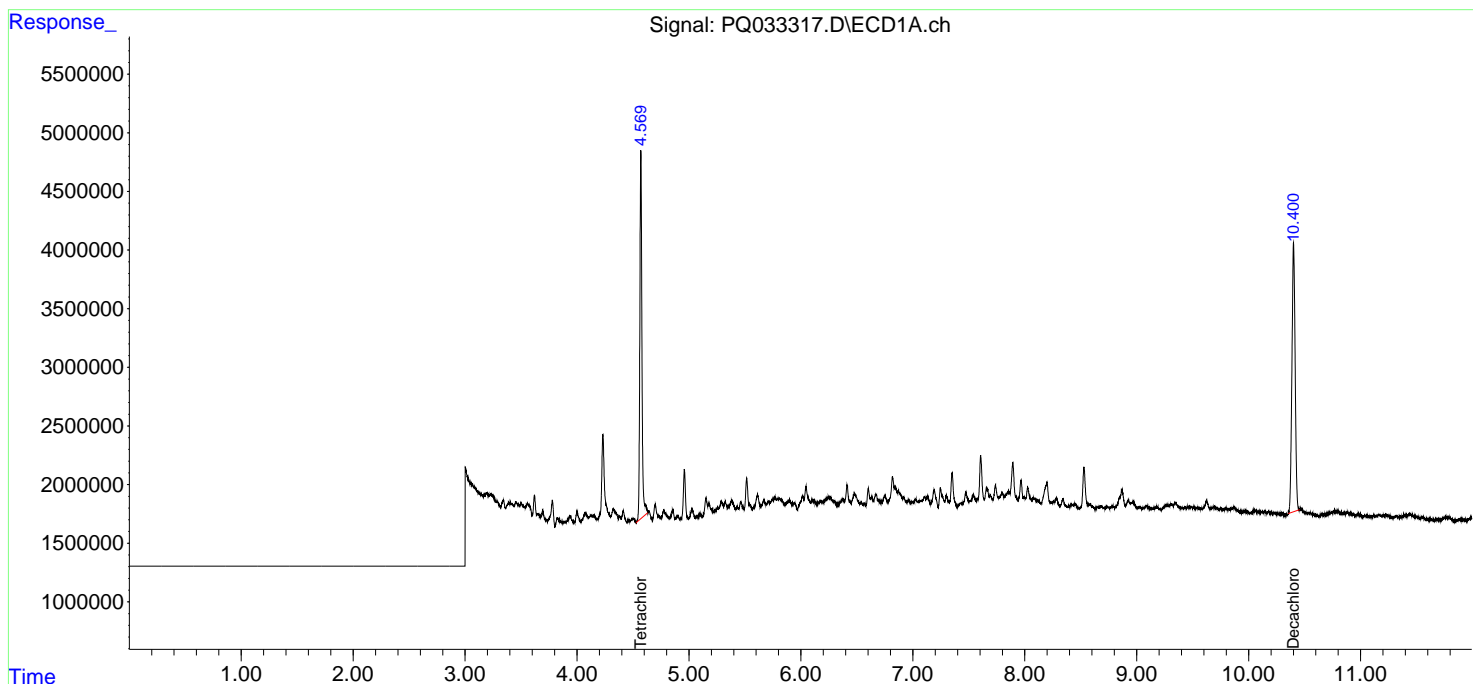
(f)=RT Delta > 1/2 Window (#)=Amounts differ by > 25% (m)=manual int.

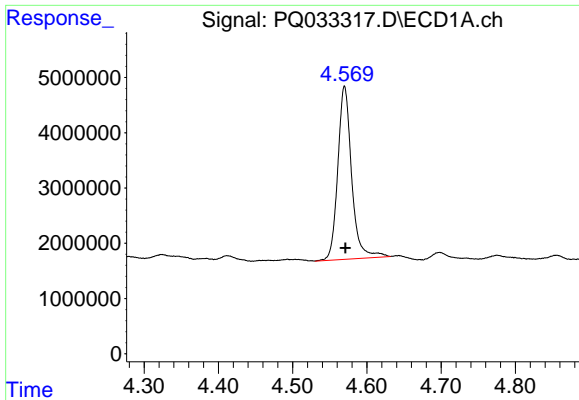
Data Path : Z:\pestpcbsrv\HPCHEM1\ECD_Q\Data\PQ101918\
 Data File : PQ033317.D
 Signal(s) : Signal #1: ECD1A.ch Signal #2: ECD2B.ch
 Acq On : 19 Oct 2018 14:19
 Operator : SM\SJ
 Sample : J5541-04
 Misc :
 ALS Vial : 23 Sample Multiplier: 1

Instrument :
 ECD_Q
 ClientSampleId :
 101518-SIDI-E-U-B

Integration File signal 1: autoint1.e
 Integration File signal 2: autoint2.e
 Quant Time: Oct 20 01:19:34 2018
 Quant Method : Z:\pestpcbsrv\HPCHEM1\ECD_Q\Method\PQ101918.M
 Quant Title : GC EXTRACTABLES
 QLast Update : Sat Oct 20 01:08:39 2018
 Response via : Initial Calibration
 Integrator: ChemStation

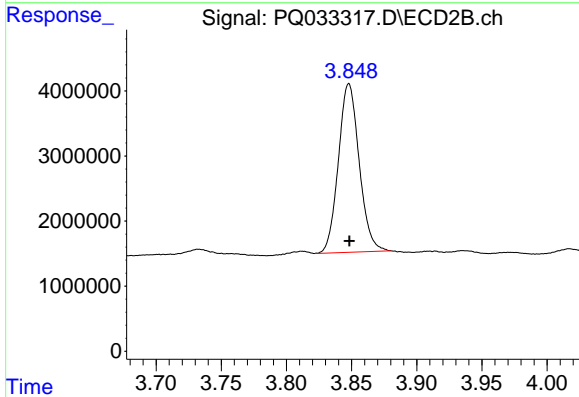
Volume Inj. : 2 µl
 Signal #1 Phase : ZB-MR1 Signal #2 Phase: ZB-MR2
 Signal #1 Info : 30Mx0.32mmx 0.50µ Signal #2 Info : 30M x 0.32mm x 0.25µm



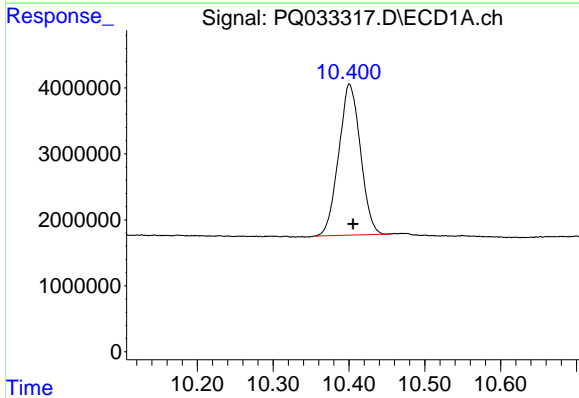


#1 Tetrachloro-m-xylene
 R.T.: 4.570 min
 Delta R.T.: -0.001 min
 Response: 40597843
 Conc: 15.73 ng/ml

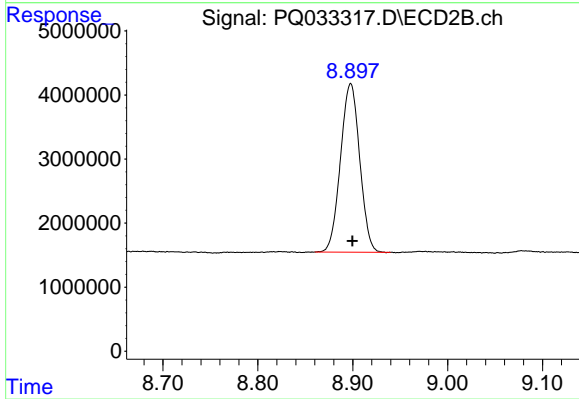
Instrument :
 ECD_Q
 ClientSampleId :
 101518-SIDI-E-U-B



#1 Tetrachloro-m-xylene
 R.T.: 3.848 min
 Delta R.T.: 0.000 min
 Response: 28781288
 Conc: 16.26 ng/ml



#2 Decachlorobiphenyl
 R.T.: 10.401 min
 Delta R.T.: -0.005 min
 Response: 45542058
 Conc: 22.20 ng/ml



#2 Decachlorobiphenyl
 R.T.: 8.898 min
 Delta R.T.: -0.002 min
 Response: 37061009
 Conc: 22.39 ng/ml