

Data Path : Z:\pestpcbsrv\HPCHEM1\ECD\_Q\Data\PQ102119\  
 Data File : PQ044504.D  
 Signal(s) : Signal #1: ECD1A.ch Signal #2: ECD2B.ch  
 Acq On : 21 Oct 2019 10:55  
 Operator : HP\AJ  
 Sample : AR1660CCC400  
 Misc :  
 ALS Vial : 3 Sample Multiplier: 1

Instrument :  
 ECD\_Q  
 ClientSampleId :  
 AR1660330

Integration File signal 1: autoint1.e  
 Integration File signal 2: autoint2.e  
 Quant Time: Oct 22 02:35:41 2019  
 Quant Method : Z:\pestpcbsrv\HPCHEM1\ECD\_Q\Method\PQ100819CLP.M  
 Quant Title : GC EXTRACTABLES  
 QLast Update : Thu Oct 10 02:55:10 2019  
 Response via : Initial Calibration  
 Integrator: ChemStation

Volume Inj. : 1 µl  
 Signal #1 Phase : ZB MR1 Signal #2 Phase: ZB MR2  
 Signal #1 Info : 30Mx0.32mmx 0.5µm Signal #2 Info : 30M x 0.32mm x 0.25µm

Compound	RT#1	RT#2	Resp#1	Resp#2	ng/ml	ng/ml
System Monitoring Compounds						
1) SA Tetrachlo...	5.323	4.350	58410260	70867667	15.024	15.876
2) SA Decachlor...	11.601	9.795	224.1E6	270.7E6	41.838	45.259
Target Compounds						
3) L1 AR-1016-1	6.644	5.632	40127971	44449684	353.594	324.041
4) L1 AR-1016-2	6.668	5.652	57669474	72093254	357.463	325.581
5) L1 AR-1016-3	6.735	5.850	36261546	36357245	356.253	348.394
6) L1 AR-1016-4	6.843	5.897	28443701	32504314	344.239	347.810
7) L1 AR-1016-5	7.160	6.133	28966813	42543422	382.978	347.918
8) L2 AR-1221-1	0.000	4.611	0	3689998	N.D.	86.919 #
9) L2 AR-1221-2	5.667	4.715	4806100	4513196	164.891	153.559
10) L2 AR-1221-3	5.755	4.806	20547411	22534784	211.230	214.591
11) L3 AR-1232-1	5.755	4.806	20547411	22534784	244.857	243.514
12) L3 AR-1232-2	6.349	5.652	27273151	72093254	702.102	683.545
13) L3 AR-1232-3	6.668	5.850	57669474	36357245	751.724	735.710
14) L3 AR-1232-4	6.843	5.943	28443701	40506062	749.880	858.879
15) L3 AR-1232-5	6.941	6.133	25793421	42543422	914.810	778.279
16) L4 AR-1242-1	6.644	5.632	40127971	44449684	411.023	375.021
17) L4 AR-1242-2	6.668	5.652	57669474	72093254	414.606	382.143
18) L4 AR-1242-3	6.735	5.850	36261546	36357245	408.016	393.100
19) L4 AR-1242-4	6.843	5.943	28443701	40506062	398.201	412.114
20) L4 AR-1242-5	7.631	6.516	4584577	32026055	60.304	251.333 #
21) L5 AR-1248-1	6.644	5.632	40127971	44449684	546.875	490.874
22) L5 AR-1248-2	6.941	5.897	25793421	32504314	260.382	234.510
23) L5 AR-1248-3	7.160	5.943	28966813	40506062	268.215	286.413
24) L5 AR-1248-4	7.588	6.133	5326870	42543422	42.310	247.684 #
25) L5 AR-1248-5	7.631	6.560	4584577	4963679	37.865	29.648
26) L6 AR-1254-1	7.562	6.516	19619532	32026055	145.808	109.804
27) L6 AR-1254-2	7.791	6.675	21819609	31650147	102.140	121.219
28) L6 AR-1254-3	8.177	7.119	13226173	79429302	53.754	181.799 #
29) L6 AR-1254-4	8.473	7.343	9876246	8927014	49.244	33.232 #
30) L6 AR-1254-5	8.906	7.777	88820166	141.2E6	371.097	353.142
31) L7 AR-1260-1	8.346	7.240	54754817	97345468	363.739	400.363
32) L7 AR-1260-2	8.611	7.436	71088806	125.7E6	361.204	416.588
33) L7 AR-1260-3	8.985	7.598	58182576	116.3E6	362.887	413.260
34) L7 AR-1260-4	9.233	8.085	72843085	109.7E6	373.068	436.043
35) L7 AR-1260-5	9.585	8.332	173.1E6	295.7E6	378.647	461.379
36) L8 AR-1262-1	9.047	7.777	30120879	141.2E6	277.337	723.596 #
37) L8 AR-1262-2	9.585	8.332	173.1E6	295.7E6	300.604	373.754
38) L8 AR-1262-3	9.949	8.621	125.5E6	66116676	302.410	208.476 #
39) L8 AR-1262-4	10.010	8.688	79566445	224.4E6	252.574	368.154 #
40) L8 AR-1262-5	10.762	9.206	69787398	85371755	274.548	304.470
41) L9 AR-1268-1	9.949	8.621	125.5E6	66116676	175.453	68.550 #

Data Path : Z:\pestpcbsrv\HPCHEM1\ECD\_Q\Data\PQ102119\  
 Data File : PQ044504.D  
 Signal(s) : Signal #1: ECD1A.ch Signal #2: ECD2B.ch  
 Acq On : 21 Oct 2019 10:55  
 Operator : HP\AJ  
 Sample : AR1660CCC400  
 Misc :  
 ALS Vial : 3 Sample Multiplier: 1

Instrument :  
 ECD\_Q  
 ClientSampleId :  
 AR1660330

Integration File signal 1: autoint1.e  
 Integration File signal 2: autoint2.e  
 Quant Time: Oct 22 02:35:41 2019  
 Quant Method : Z:\pestpcbsrv\HPCHEM1\ECD\_Q\Method\PQ100819CLP.M  
 Quant Title : GC EXTRACTABLES  
 QLast Update : Thu Oct 10 02:55:10 2019  
 Response via : Initial Calibration  
 Integrator: ChemStation

Volume Inj. : 1 µl  
 Signal #1 Phase : ZB MR1 Signal #2 Phase: ZB MR2  
 Signal #1 Info : 30Mx0.32mmx 0.5µm Signal #2 Info : 30M x 0.32mm x 0.25µm

	Compound	RT#1	RT#2	Resp#1	Resp#2	ng/ml	ng/ml
42)	L9 AR-1268-2	10.010	8.688	79566445	224.4E6	117.082	246.729 #
43)	L9 AR-1268-3	10.285	8.899	6635736	6603884	11.561	8.718
44)	L9 AR-1268-4	10.762	9.206	69787398	85371755	242.229	261.083
45)	L9 AR-1268-5	11.226	9.520	20468008	25229699	9.415	9.686

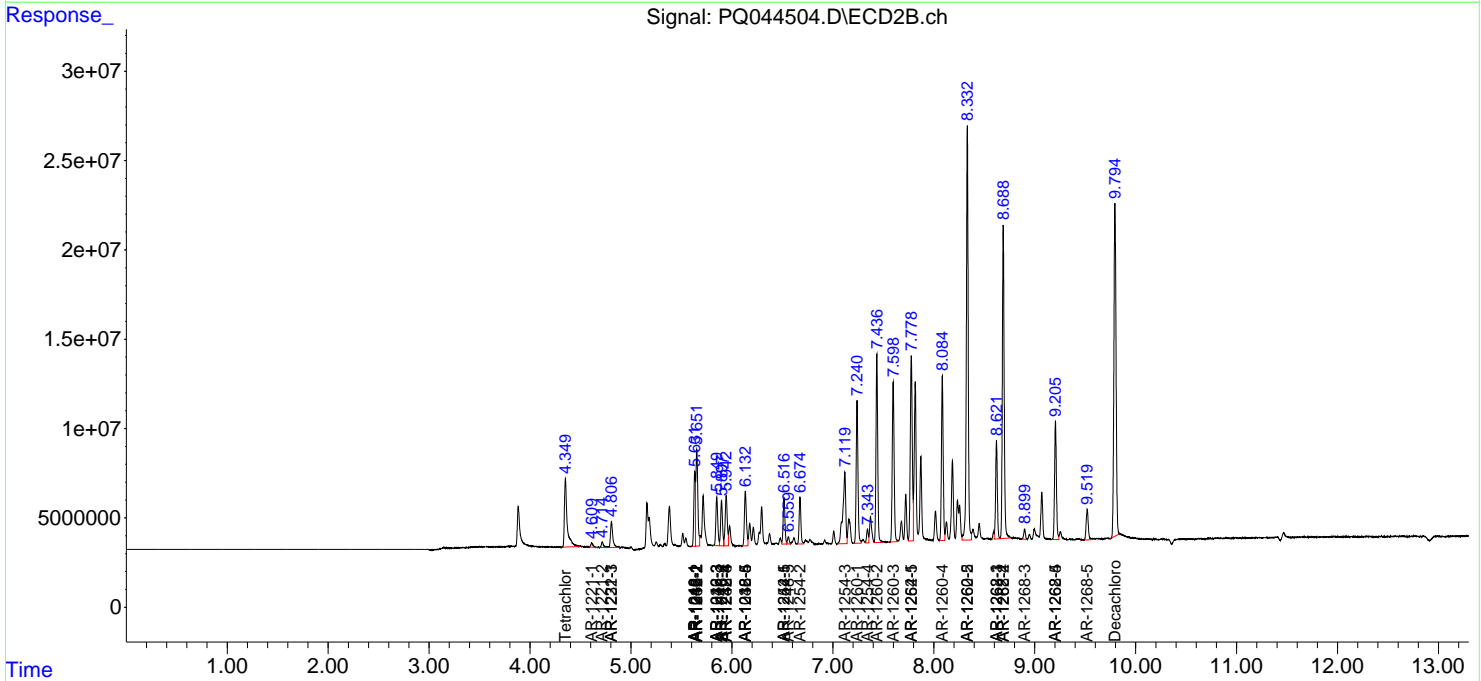
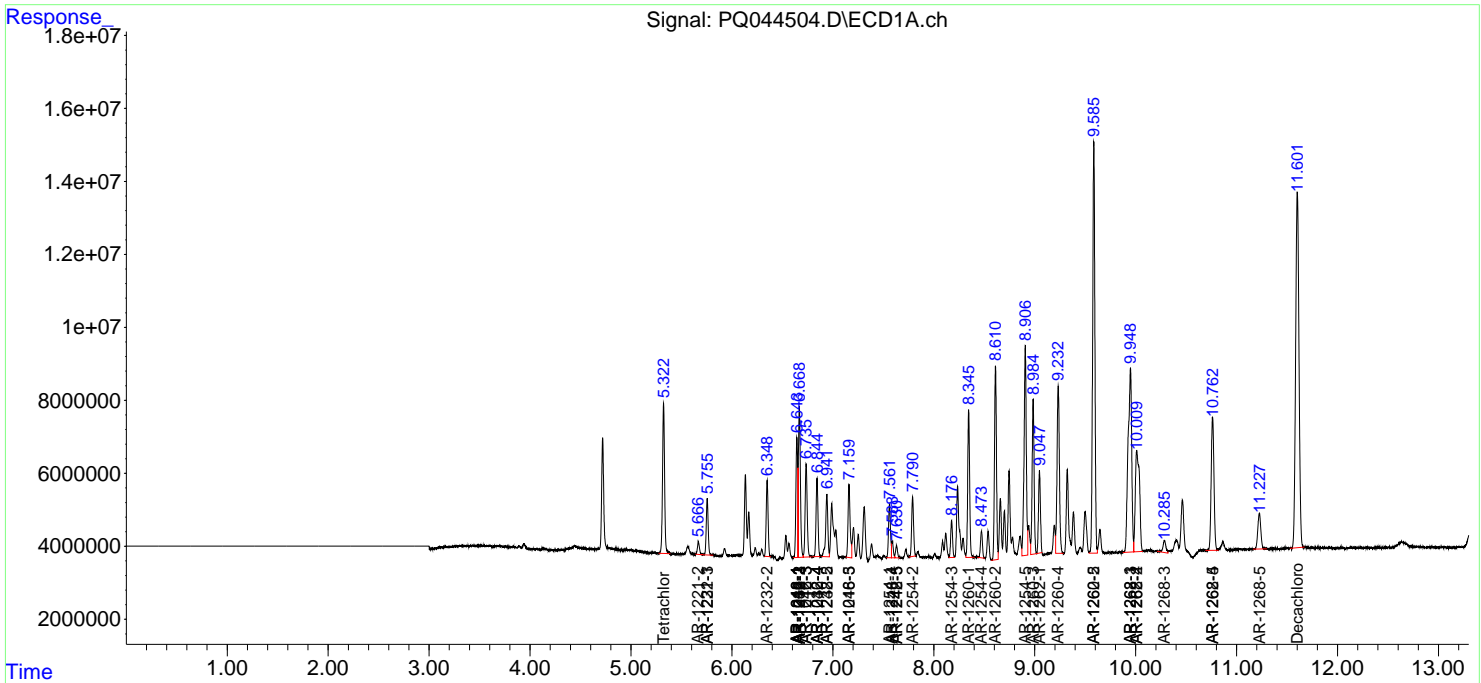
(f)=RT Delta > 1/2 Window (#)=Amounts differ by > 25% (m)=manual int.

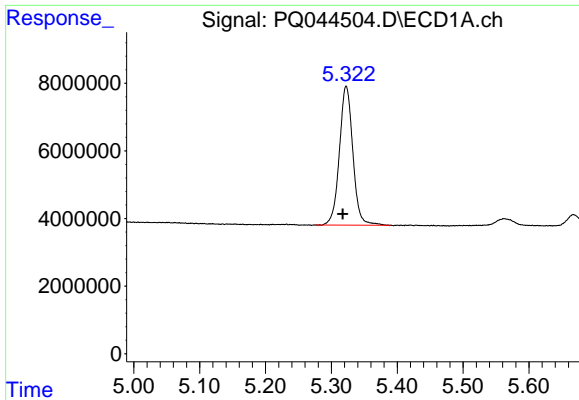
Data Path : Z:\pestpcbsrv\HPCHEM1\ECD\_Q\Data\PQ102119\  
 Data File : PQ044504.D  
 Signal(s) : Signal #1: ECD1A.ch Signal #2: ECD2B.ch  
 Acq On : 21 Oct 2019 10:55  
 Operator : HP\AJ  
 Sample : AR1660CCC400  
 Misc :  
 ALS Vial : 3 Sample Multiplier: 1

**Instrument :**  
 ECD\_Q  
**Client Sampled :**  
 AR1660330

Integration File signal 1: autoint1.e  
 Integration File signal 2: autoint2.e  
 Quant Time: Oct 22 02:35:41 2019  
 Quant Method : Z:\pestpcbsrv\HPCHEM1\ECD\_Q\Method\PQ100819CLP.M  
 Quant Title : GC EXTRACTABLES  
 QLast Update : Thu Oct 10 02:55:10 2019  
 Response via : Initial Calibration  
 Integrator: ChemStation

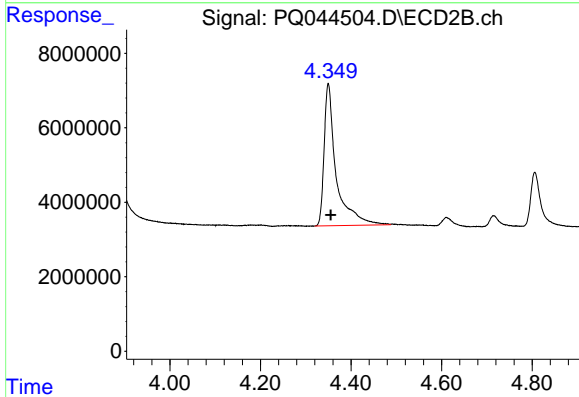
Volume Inj. : 1 µl  
 Signal #1 Phase : ZB MR1 Signal #2 Phase: ZB MR2  
 Signal #1 Info : 30Mx0.32mmx 0.5µm Signal #2 Info : 30M x 0.32mm x 0.25µm



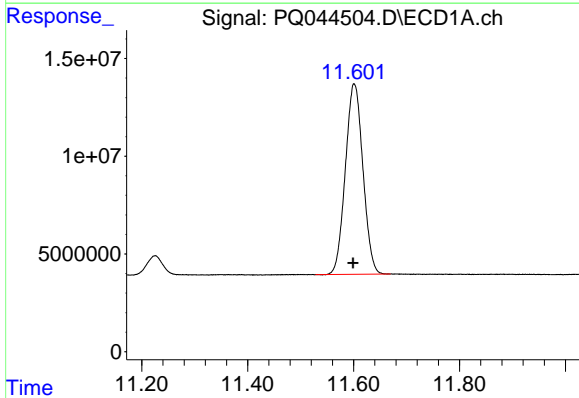


#1 Tetrachloro-m-xylene  
 R.T.: 5.323 min  
 Delta R.T.: 0.006 min  
 Response: 58410260  
 Conc: 15.02 ng/ml

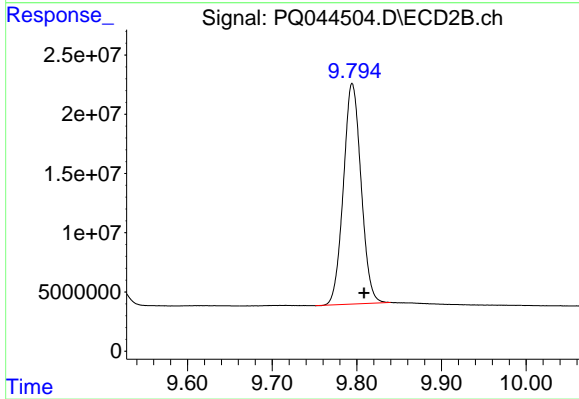
Instrument :  
 ECD\_Q  
 ClientSampleId :  
 AR1660330



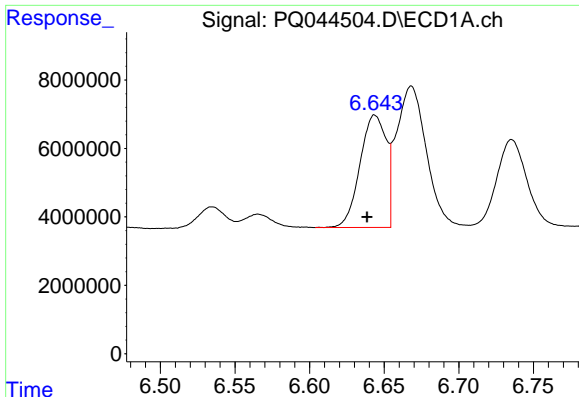
#1 Tetrachloro-m-xylene  
 R.T.: 4.350 min  
 Delta R.T.: -0.005 min  
 Response: 70867667  
 Conc: 15.88 ng/ml



#2 Decachlorobiphenyl  
 R.T.: 11.601 min  
 Delta R.T.: 0.002 min  
 Response: 224147702  
 Conc: 41.84 ng/ml



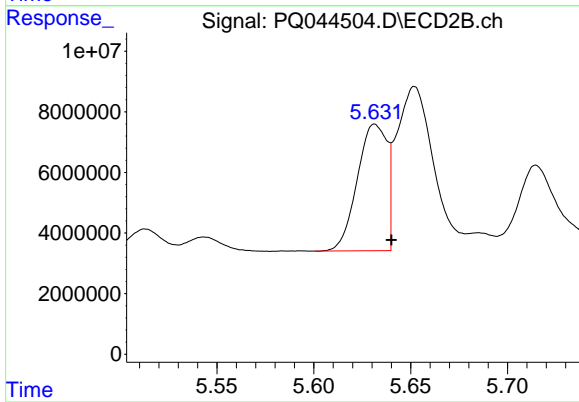
#2 Decachlorobiphenyl  
 R.T.: 9.795 min  
 Delta R.T.: -0.014 min  
 Response: 270711165  
 Conc: 45.26 ng/ml



#3 AR-1016-1

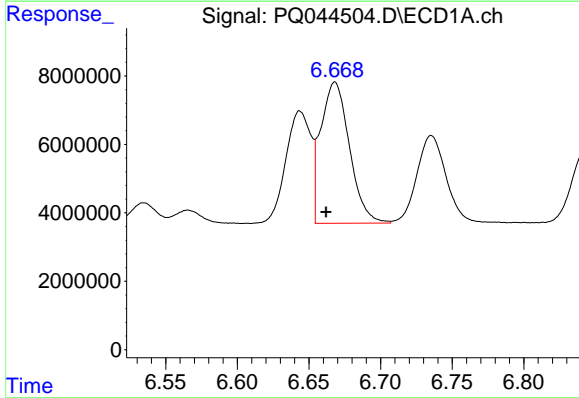
R.T.: 6.644 min  
 Delta R.T.: 0.005 min  
 Response: 40127971  
 Conc: 353.59 ng/ml

Instrument :  
 ECD\_Q  
 ClientSampleId :  
 AR1660330



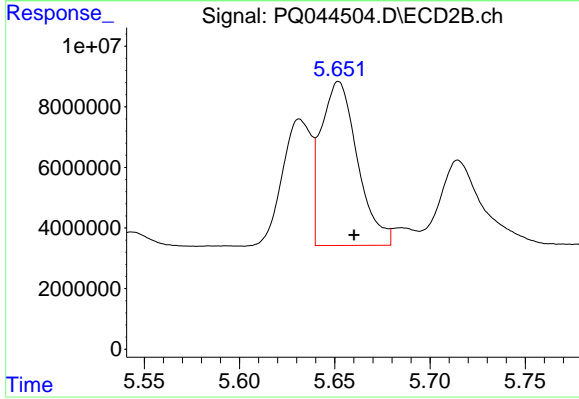
#3 AR-1016-1

R.T.: 5.632 min  
 Delta R.T.: -0.009 min  
 Response: 44449684  
 Conc: 324.04 ng/ml



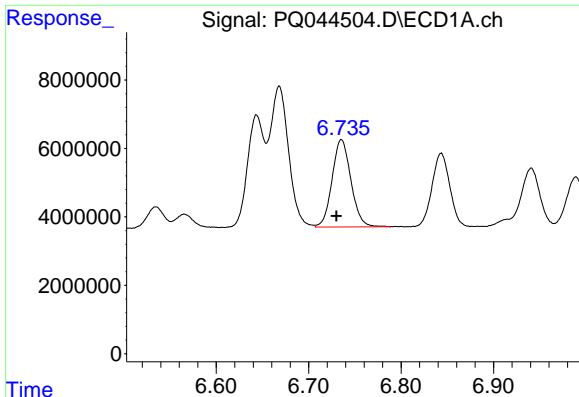
#4 AR-1016-2

R.T.: 6.668 min  
 Delta R.T.: 0.006 min  
 Response: 57669474  
 Conc: 357.46 ng/ml



#4 AR-1016-2

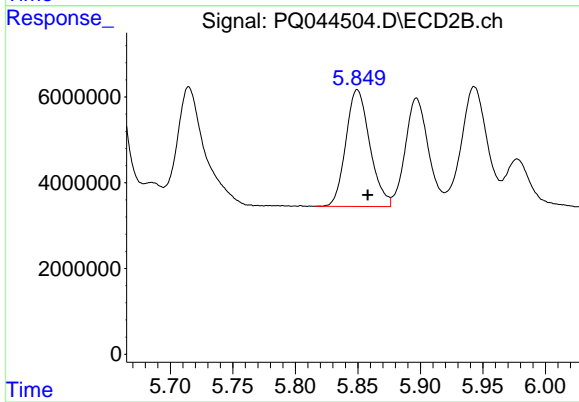
R.T.: 5.652 min  
 Delta R.T.: -0.008 min  
 Response: 72093254  
 Conc: 325.58 ng/ml



#5 AR-1016-3

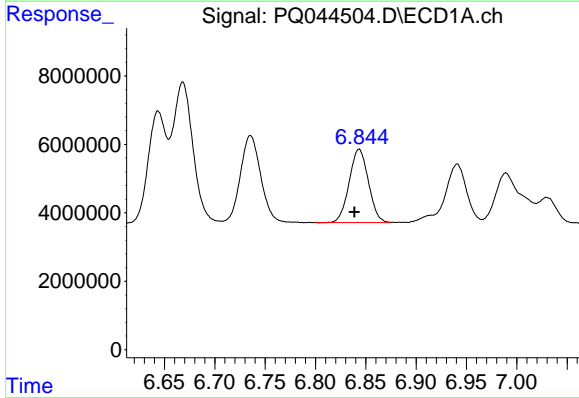
R.T.: 6.735 min  
 Delta R.T.: 0.005 min  
 Response: 36261546  
 Conc: 356.25 ng/ml

Instrument :  
 ECD\_Q  
 ClientSampleId :  
 AR1660330



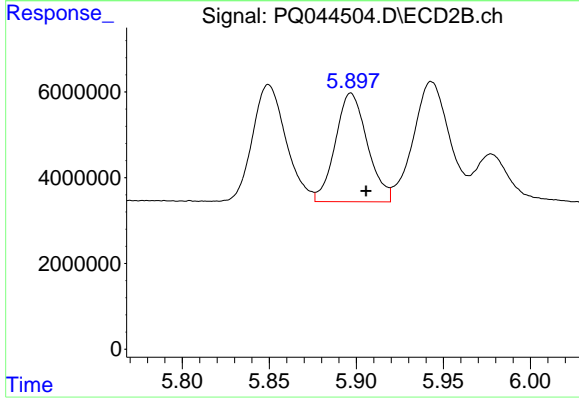
#5 AR-1016-3

R.T.: 5.850 min  
 Delta R.T.: -0.008 min  
 Response: 36357245  
 Conc: 348.39 ng/ml



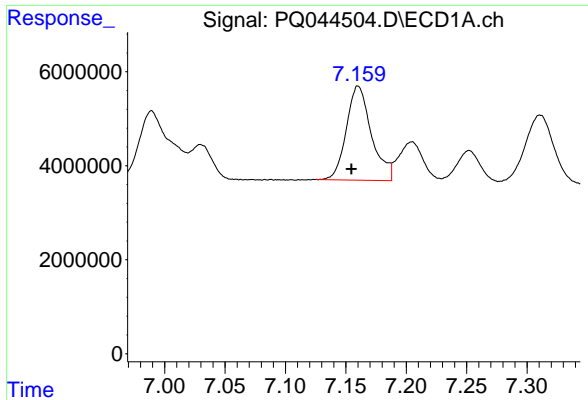
#6 AR-1016-4

R.T.: 6.843 min  
 Delta R.T.: 0.005 min  
 Response: 28443701  
 Conc: 344.24 ng/ml



#6 AR-1016-4

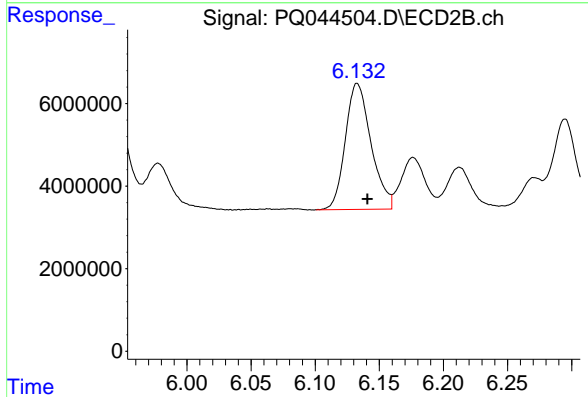
R.T.: 5.897 min  
 Delta R.T.: -0.009 min  
 Response: 32504314  
 Conc: 347.81 ng/ml



#7 AR-1016-5

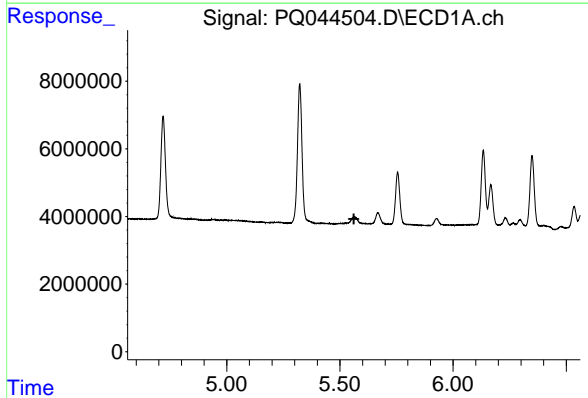
R.T.: 7.160 min  
 Delta R.T.: 0.005 min  
 Response: 28966813  
 Conc: 382.98 ng/ml

Instrument :  
 ECD\_Q  
 ClientSampled :  
 AR1660330



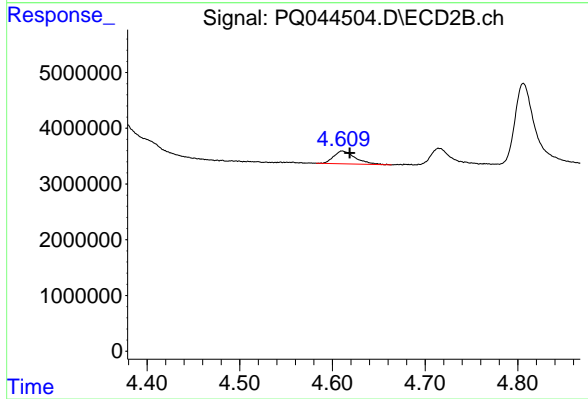
#7 AR-1016-5

R.T.: 6.133 min  
 Delta R.T.: -0.008 min  
 Response: 42543422  
 Conc: 347.92 ng/ml



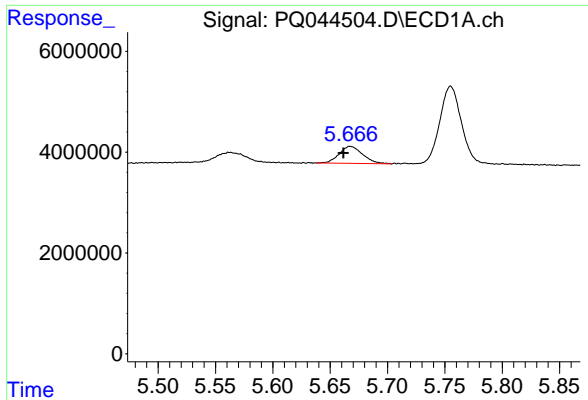
#8 AR-1221-1

R.T.: 0.000 min  
 Exp R.T. : 5.562 min  
 Response: 0  
 Conc: N.D.



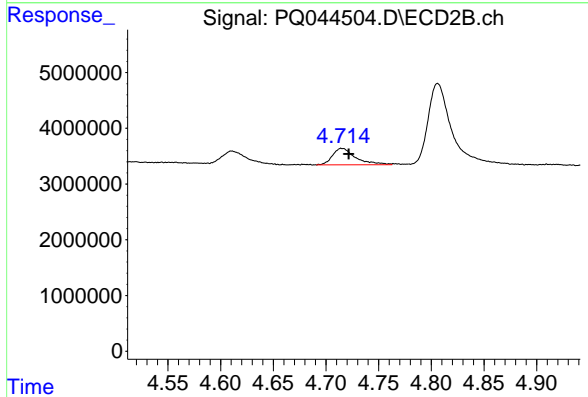
#8 AR-1221-1

R.T.: 4.611 min  
 Delta R.T.: -0.008 min  
 Response: 3689998  
 Conc: 86.92 ng/ml

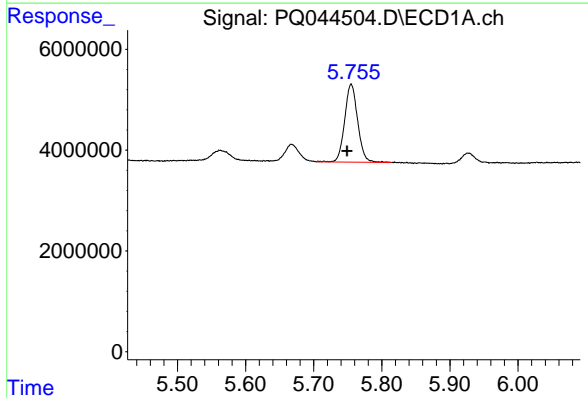


#9 AR-1221-2  
 R.T.: 5.667 min  
 Delta R.T.: 0.006 min  
 Response: 4806100  
 Conc: 164.89 ng/ml

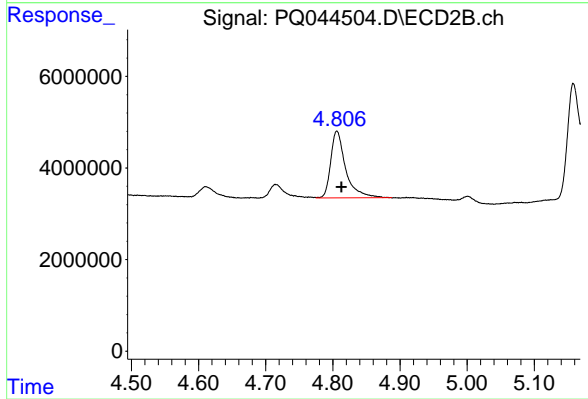
Instrument :  
 ECD\_Q  
 ClientSampleId :  
 AR1660330



#9 AR-1221-2  
 R.T.: 4.715 min  
 Delta R.T.: -0.007 min  
 Response: 4513196  
 Conc: 153.56 ng/ml

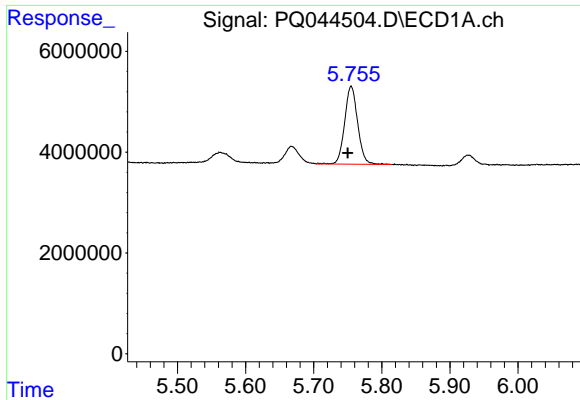


#10 AR-1221-3  
 R.T.: 5.755 min  
 Delta R.T.: 0.006 min  
 Response: 20547411  
 Conc: 211.23 ng/ml



#10 AR-1221-3  
 R.T.: 4.806 min  
 Delta R.T.: -0.007 min  
 Response: 22534784  
 Conc: 214.59 ng/ml

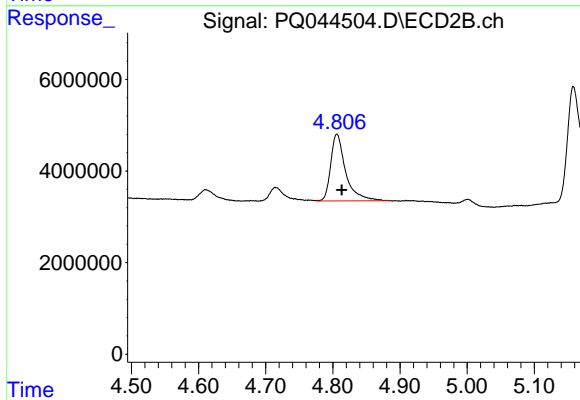




#11 AR-1232-1

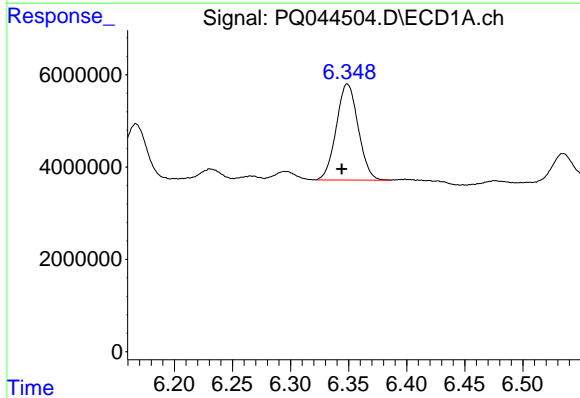
R.T.: 5.755 min  
 Delta R.T.: 0.005 min  
 Response: 20547411  
 Conc: 244.86 ng/ml

Instrument :  
 ECD\_Q  
 ClientSampleId :  
 AR1660330



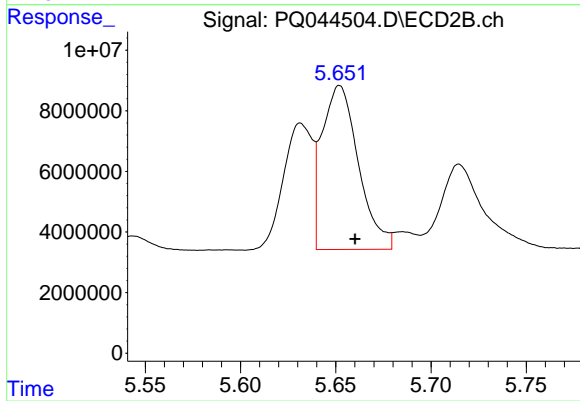
#11 AR-1232-1

R.T.: 4.806 min  
 Delta R.T.: -0.007 min  
 Response: 22534784  
 Conc: 243.51 ng/ml



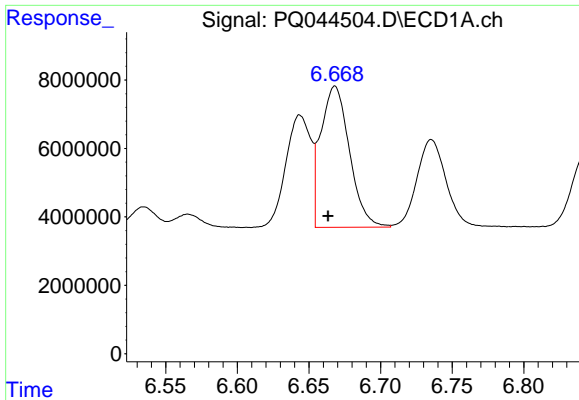
#12 AR-1232-2

R.T.: 6.349 min  
 Delta R.T.: 0.005 min  
 Response: 27273151  
 Conc: 702.10 ng/ml



#12 AR-1232-2

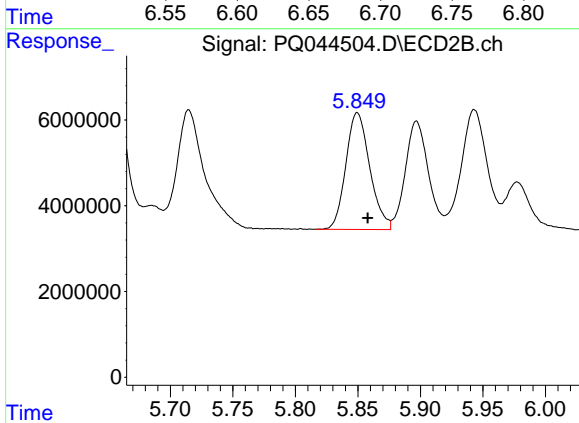
R.T.: 5.652 min  
 Delta R.T.: -0.008 min  
 Response: 72093254  
 Conc: 683.54 ng/ml



#13 AR-1232-3

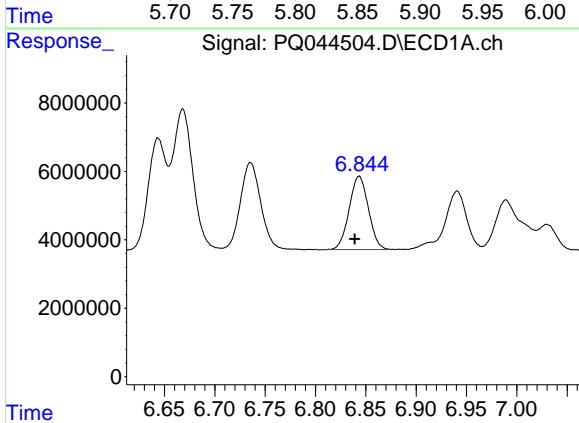
R.T.: 6.668 min  
 Delta R.T.: 0.005 min  
 Response: 57669474  
 Conc: 751.72 ng/ml

Instrument :  
 ECD\_Q  
 ClientSampleId :  
 AR1660330



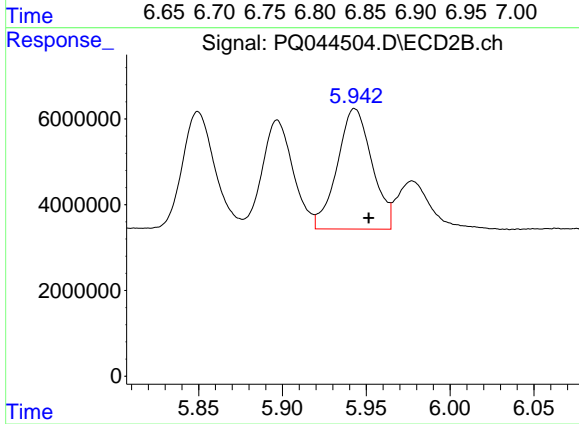
#13 AR-1232-3

R.T.: 5.850 min  
 Delta R.T.: -0.008 min  
 Response: 36357245  
 Conc: 735.71 ng/ml



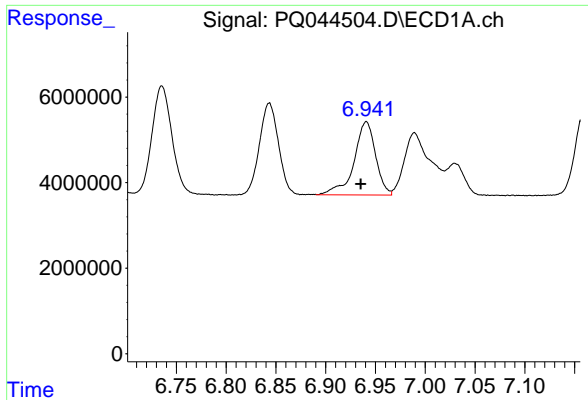
#14 AR-1232-4

R.T.: 6.843 min  
 Delta R.T.: 0.004 min  
 Response: 28443701  
 Conc: 749.88 ng/ml



#14 AR-1232-4

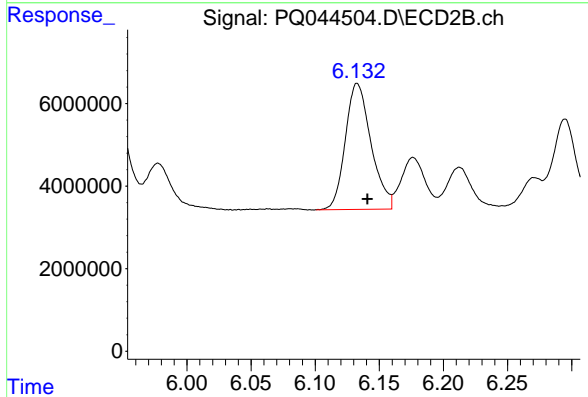
R.T.: 5.943 min  
 Delta R.T.: -0.008 min  
 Response: 40506062  
 Conc: 858.88 ng/ml



#15 AR-1232-5

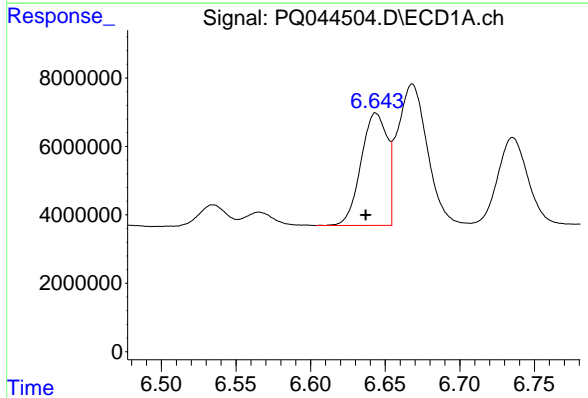
R.T.: 6.941 min  
 Delta R.T.: 0.005 min  
 Response: 25793421  
 Conc: 914.81 ng/ml

**Instrument :**  
 ECD\_Q  
**ClientSampleId :**  
 AR1660330



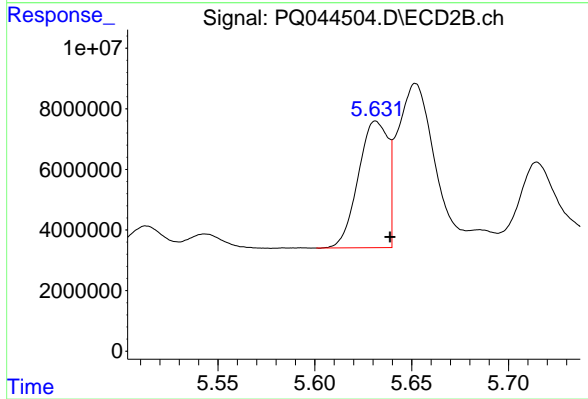
#15 AR-1232-5

R.T.: 6.133 min  
 Delta R.T.: -0.008 min  
 Response: 42543422  
 Conc: 778.28 ng/ml



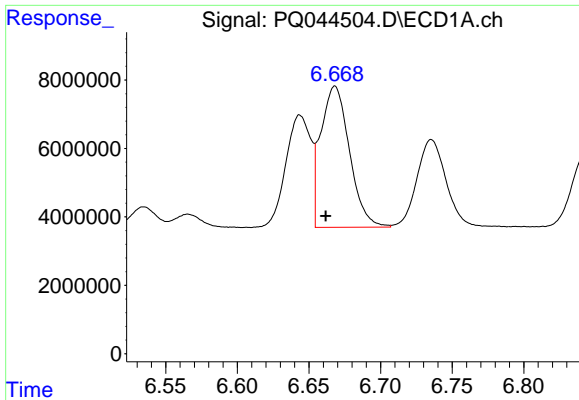
#16 AR-1242-1

R.T.: 6.644 min  
 Delta R.T.: 0.007 min  
 Response: 40127971  
 Conc: 411.02 ng/ml



#16 AR-1242-1

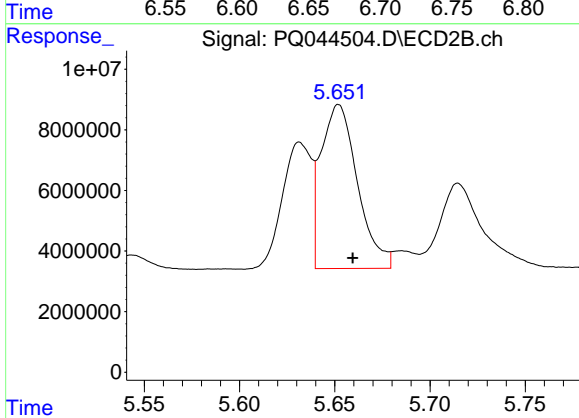
R.T.: 5.632 min  
 Delta R.T.: -0.007 min  
 Response: 44449684  
 Conc: 375.02 ng/ml



#17 AR-1242-2

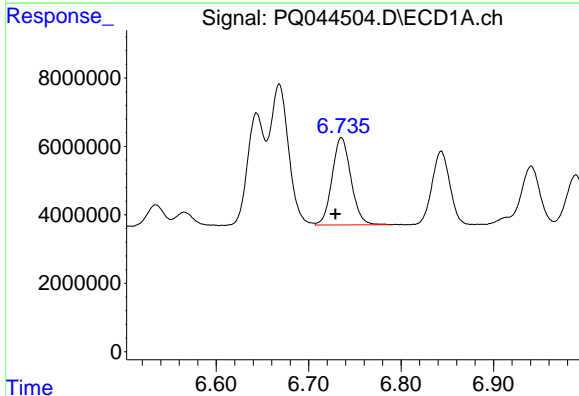
R.T.: 6.668 min  
 Delta R.T.: 0.006 min  
 Response: 57669474  
 Conc: 414.61 ng/ml

Instrument :  
 ECD\_Q  
 ClientSampled :  
 AR1660330



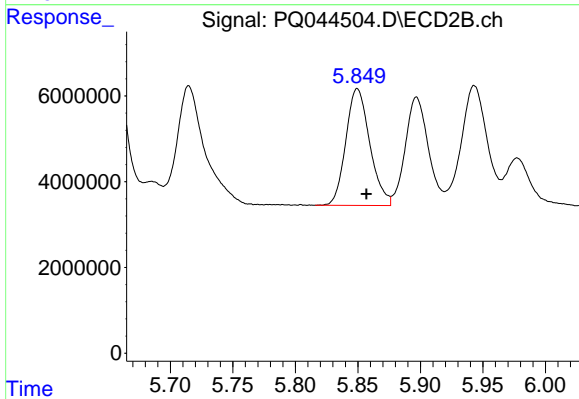
#17 AR-1242-2

R.T.: 5.652 min  
 Delta R.T.: -0.007 min  
 Response: 72093254  
 Conc: 382.14 ng/ml



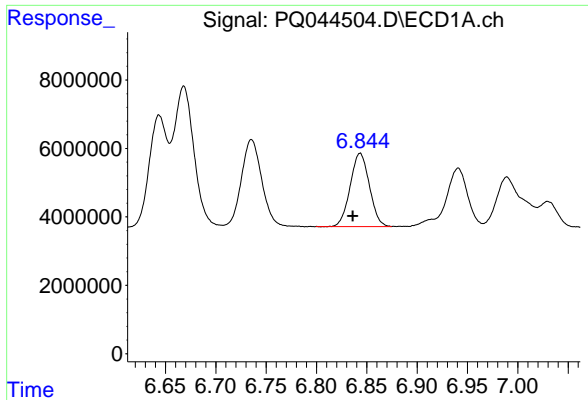
#18 AR-1242-3

R.T.: 6.735 min  
 Delta R.T.: 0.006 min  
 Response: 36261546  
 Conc: 408.02 ng/ml



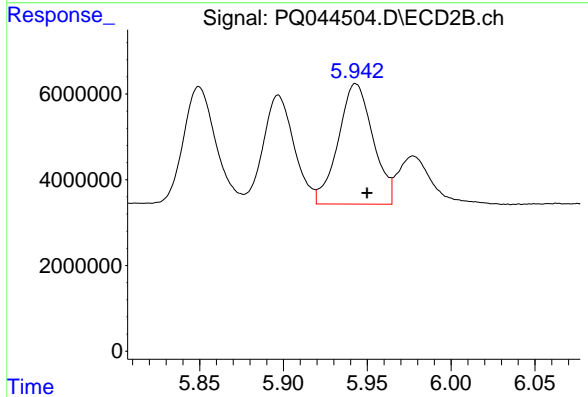
#18 AR-1242-3

R.T.: 5.850 min  
 Delta R.T.: -0.007 min  
 Response: 36357245  
 Conc: 393.10 ng/ml

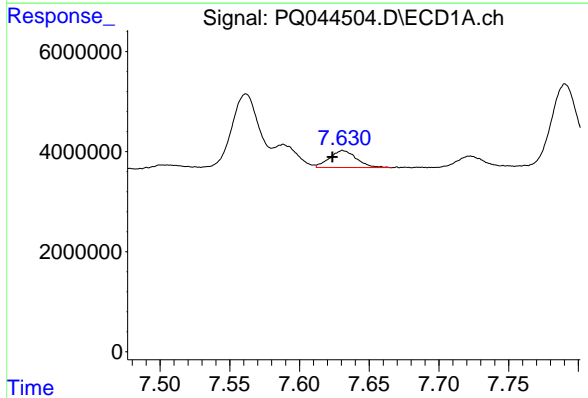


#19 AR-1242-4  
 R.T.: 6.843 min  
 Delta R.T.: 0.007 min  
 Response: 28443701  
 Conc: 398.20 ng/ml

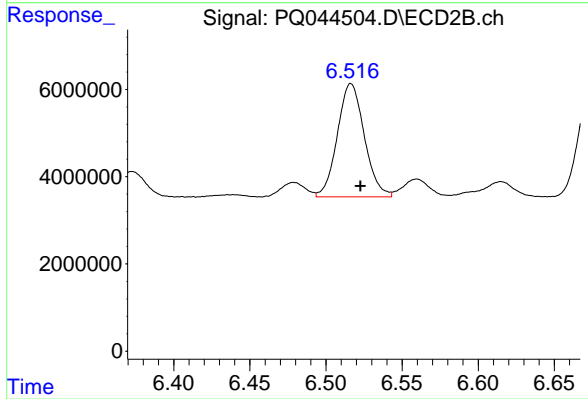
**Instrument :**  
 ECD\_Q  
**ClientSampled :**  
 AR1660330



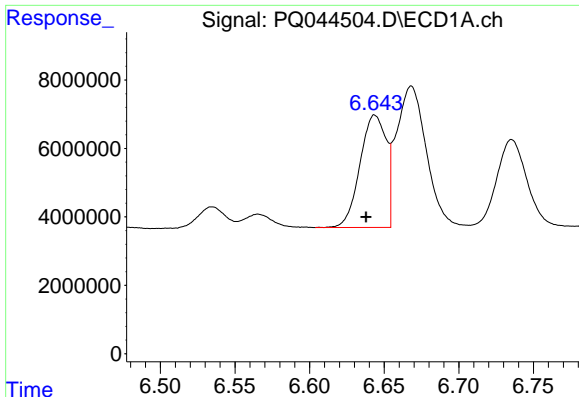
#19 AR-1242-4  
 R.T.: 5.943 min  
 Delta R.T.: -0.007 min  
 Response: 40506062  
 Conc: 412.11 ng/ml



#20 AR-1242-5  
 R.T.: 7.631 min  
 Delta R.T.: 0.008 min  
 Response: 4584577  
 Conc: 60.30 ng/ml



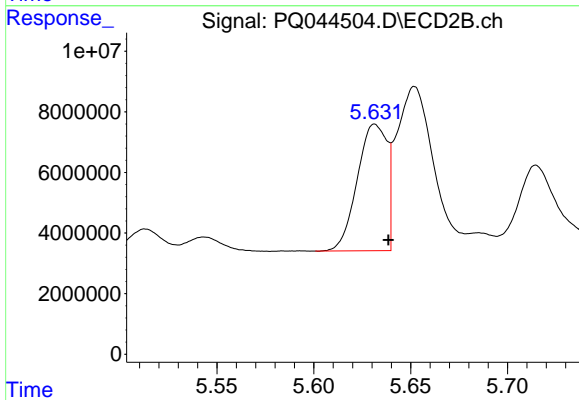
#20 AR-1242-5  
 R.T.: 6.516 min  
 Delta R.T.: -0.006 min  
 Response: 32026055  
 Conc: 251.33 ng/ml



#21 AR-1248-1

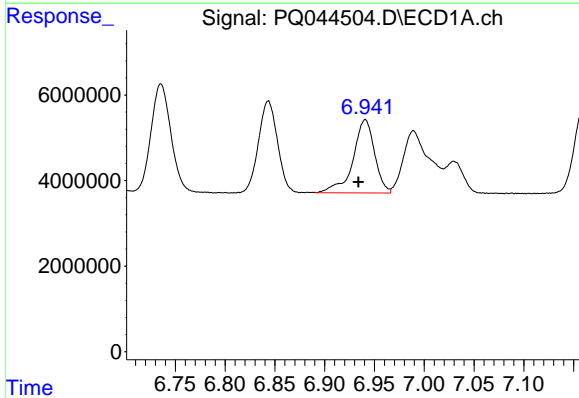
R.T.: 6.644 min  
 Delta R.T.: 0.006 min  
 Response: 40127971  
 Conc: 546.88 ng/ml

Instrument :  
 ECD\_Q  
 ClientSampleId :  
 AR1660330



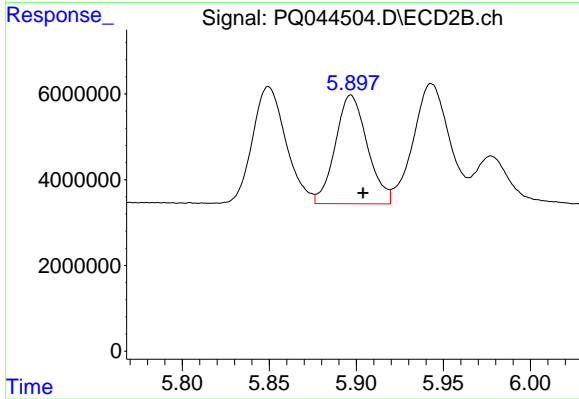
#21 AR-1248-1

R.T.: 5.632 min  
 Delta R.T.: -0.007 min  
 Response: 44449684  
 Conc: 490.87 ng/ml



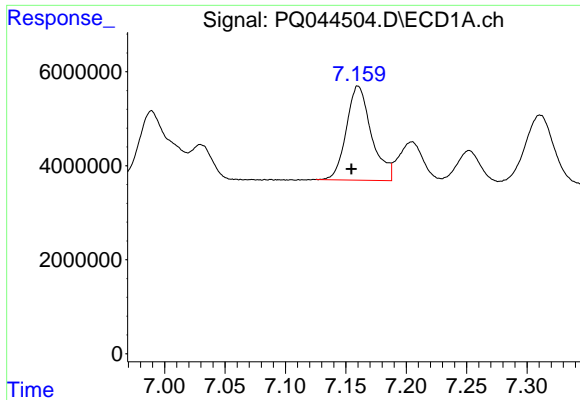
#22 AR-1248-2

R.T.: 6.941 min  
 Delta R.T.: 0.007 min  
 Response: 25793421  
 Conc: 260.38 ng/ml



#22 AR-1248-2

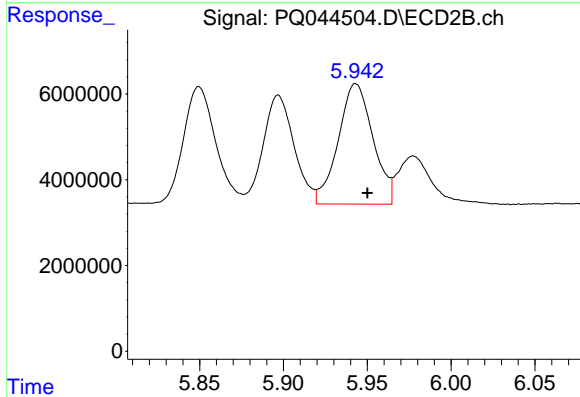
R.T.: 5.897 min  
 Delta R.T.: -0.007 min  
 Response: 32504314  
 Conc: 234.51 ng/ml



#23 AR-1248-3

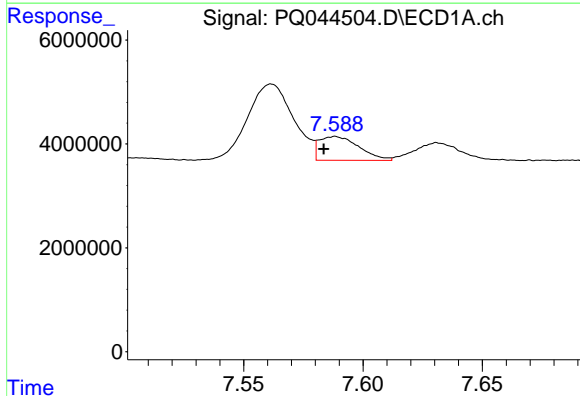
R.T.: 7.160 min  
 Delta R.T.: 0.006 min  
 Response: 28966813  
 Conc: 268.21 ng/ml

Instrument :  
 ECD\_Q  
 ClientSampleId :  
 AR1660330



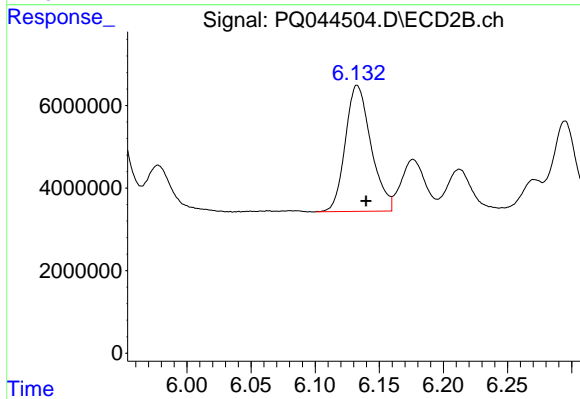
#23 AR-1248-3

R.T.: 5.943 min  
 Delta R.T.: -0.007 min  
 Response: 40506062  
 Conc: 286.41 ng/ml



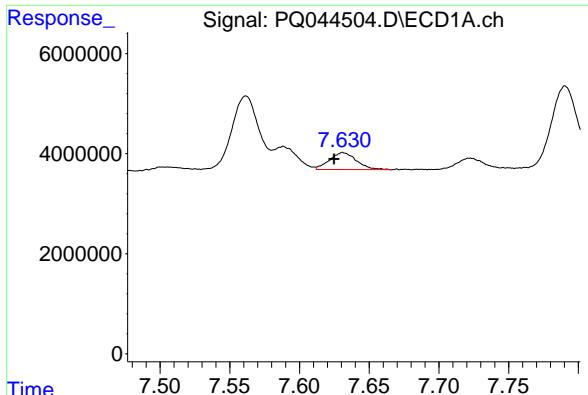
#24 AR-1248-4

R.T.: 7.588 min  
 Delta R.T.: 0.005 min  
 Response: 5326870  
 Conc: 42.31 ng/ml



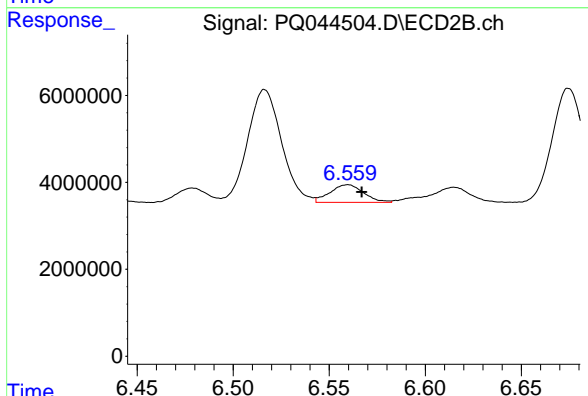
#24 AR-1248-4

R.T.: 6.133 min  
 Delta R.T.: -0.007 min  
 Response: 42543422  
 Conc: 247.68 ng/ml

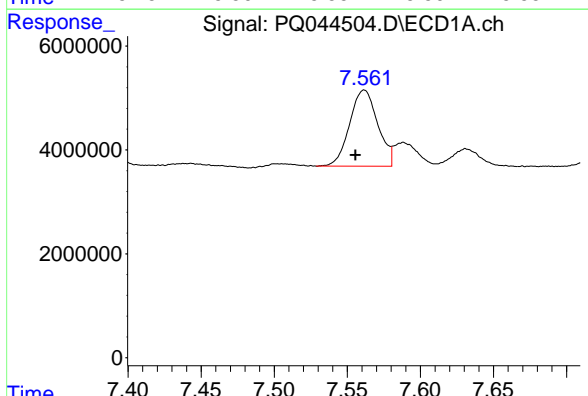


#25 AR-1248-5  
 R.T.: 7.631 min  
 Delta R.T.: 0.006 min  
 Response: 4584577  
 Conc: 37.86 ng/ml

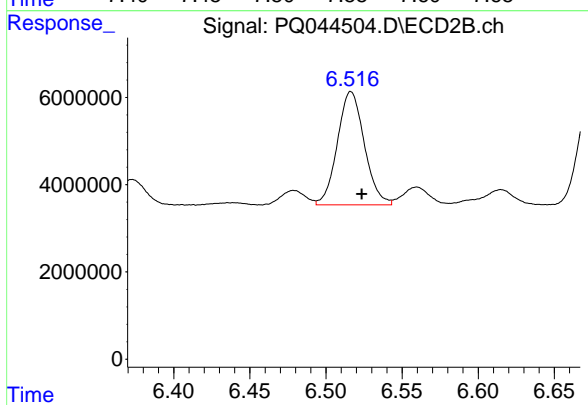
Instrument :  
 ECD\_Q  
 ClientSampleId :  
 AR1660330



#25 AR-1248-5  
 R.T.: 6.560 min  
 Delta R.T.: -0.007 min  
 Response: 4963679  
 Conc: 29.65 ng/ml

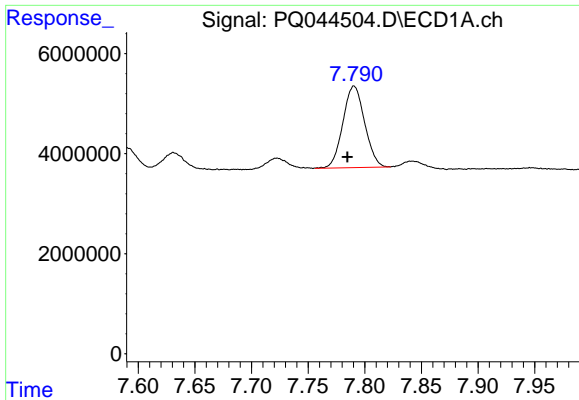


#26 AR-1254-1  
 R.T.: 7.562 min  
 Delta R.T.: 0.006 min  
 Response: 19619532  
 Conc: 145.81 ng/ml



#26 AR-1254-1  
 R.T.: 6.516 min  
 Delta R.T.: -0.007 min  
 Response: 32026055  
 Conc: 109.80 ng/ml

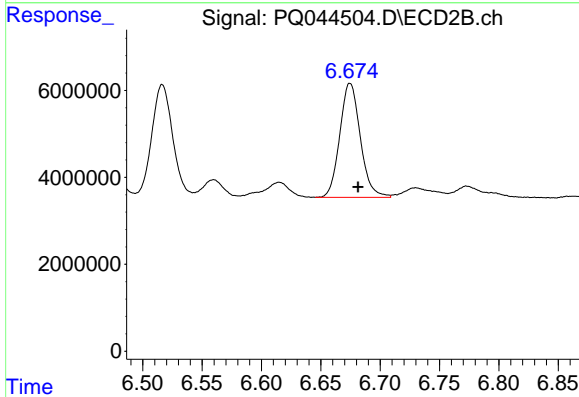




#27 AR-1254-2

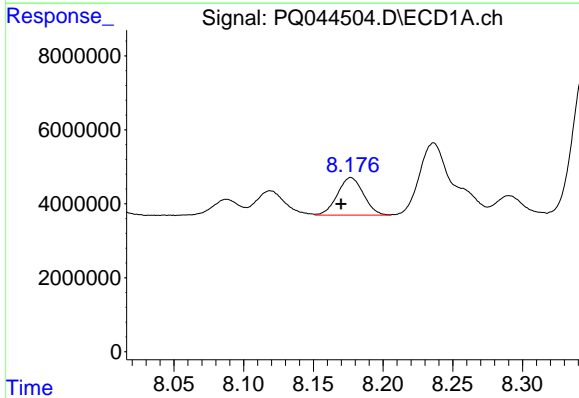
R.T.: 7.791 min  
 Delta R.T.: 0.006 min  
 Response: 21819609  
 Conc: 102.14 ng/ml

Instrument :  
 ECD\_Q  
 ClientSampleId :  
 AR1660330



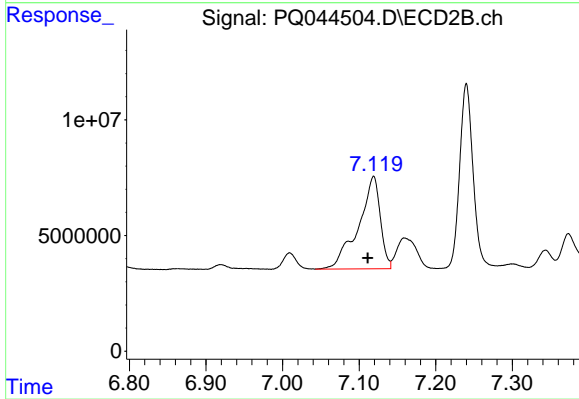
#27 AR-1254-2

R.T.: 6.675 min  
 Delta R.T.: -0.007 min  
 Response: 31650147  
 Conc: 121.22 ng/ml



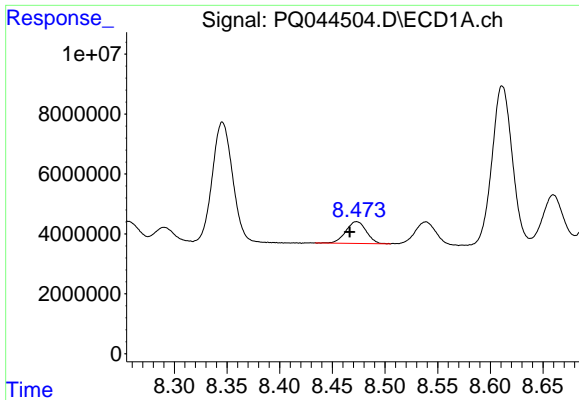
#28 AR-1254-3

R.T.: 8.177 min  
 Delta R.T.: 0.007 min  
 Response: 13226173  
 Conc: 53.75 ng/ml



#28 AR-1254-3

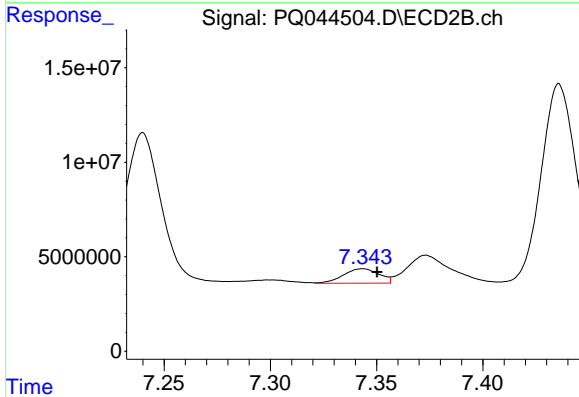
R.T.: 7.119 min  
 Delta R.T.: 0.008 min  
 Response: 79429302  
 Conc: 181.80 ng/ml



#29 AR-1254-4

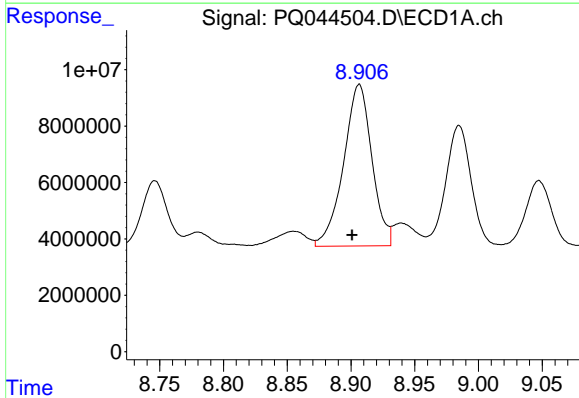
R.T.: 8.473 min  
 Delta R.T.: 0.006 min  
 Response: 9876246  
 Conc: 49.24 ng/ml

Instrument :  
 ECD\_Q  
 ClientSampleId :  
 AR1660330



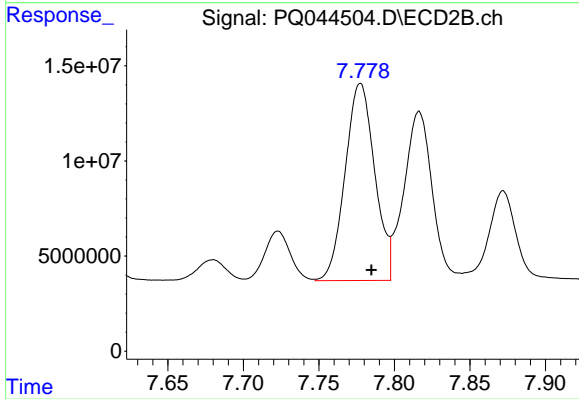
#29 AR-1254-4

R.T.: 7.343 min  
 Delta R.T.: -0.007 min  
 Response: 8927014  
 Conc: 33.23 ng/ml



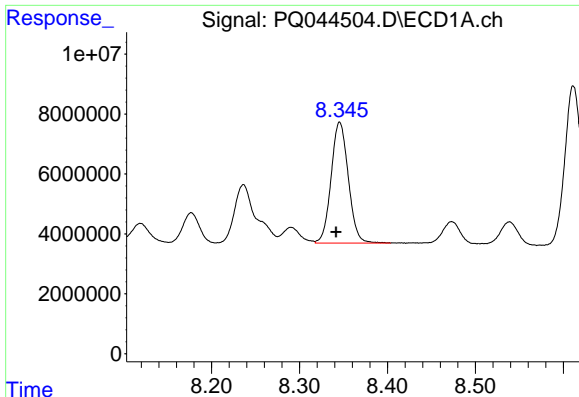
#30 AR-1254-5

R.T.: 8.906 min  
 Delta R.T.: 0.006 min  
 Response: 88820166  
 Conc: 371.10 ng/ml



#30 AR-1254-5

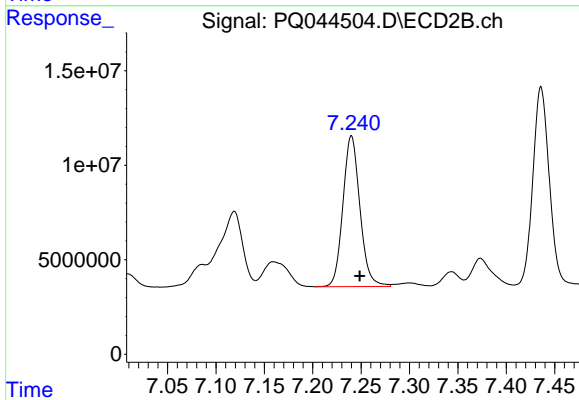
R.T.: 7.777 min  
 Delta R.T.: -0.007 min  
 Response: 141208288  
 Conc: 353.14 ng/ml



#31 AR-1260-1

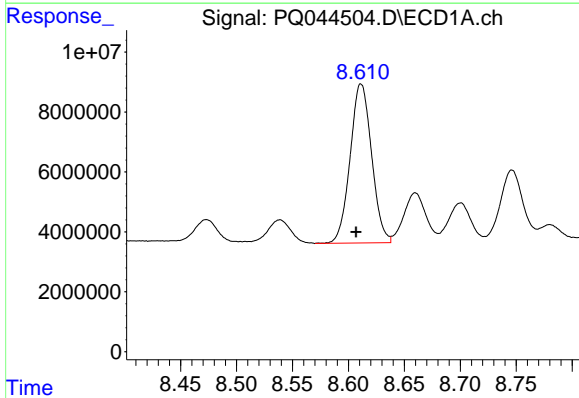
R.T.: 8.346 min  
 Delta R.T.: 0.004 min  
 Response: 54754817  
 Conc: 363.74 ng/ml

Instrument :  
 ECD\_Q  
 ClientSampleId :  
 AR1660330



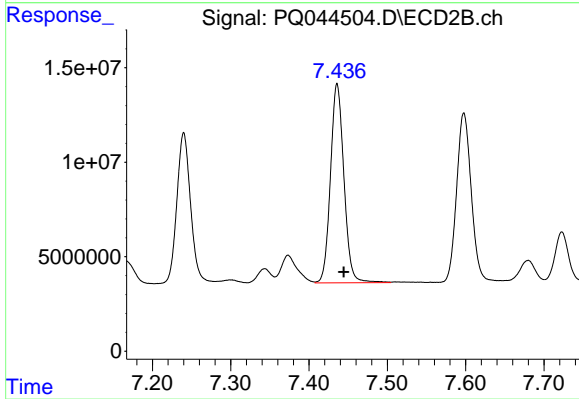
#31 AR-1260-1

R.T.: 7.240 min  
 Delta R.T.: -0.009 min  
 Response: 97345468  
 Conc: 400.36 ng/ml



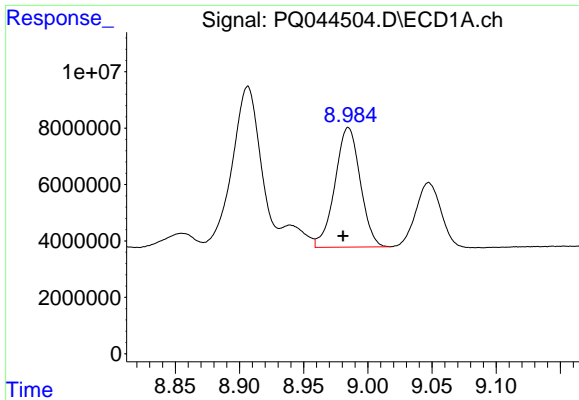
#32 AR-1260-2

R.T.: 8.611 min  
 Delta R.T.: 0.004 min  
 Response: 71088806  
 Conc: 361.20 ng/ml



#32 AR-1260-2

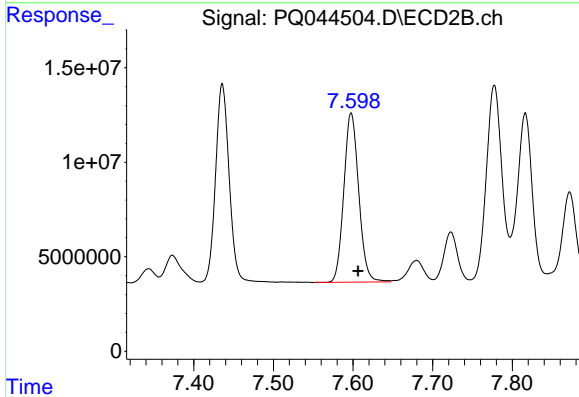
R.T.: 7.436 min  
 Delta R.T.: -0.008 min  
 Response: 125749122  
 Conc: 416.59 ng/ml



#33 AR-1260-3

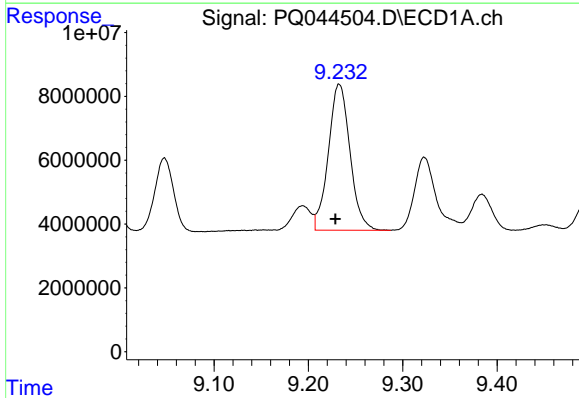
R.T.: 8.985 min  
 Delta R.T.: 0.004 min  
 Response: 58182576  
 Conc: 362.89 ng/ml

Instrument :  
 ECD\_Q  
 ClientSampled :  
 AR1660330



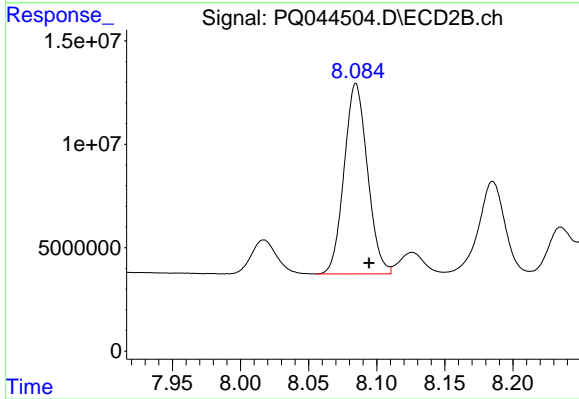
#33 AR-1260-3

R.T.: 7.598 min  
 Delta R.T.: -0.008 min  
 Response: 116299425  
 Conc: 413.26 ng/ml



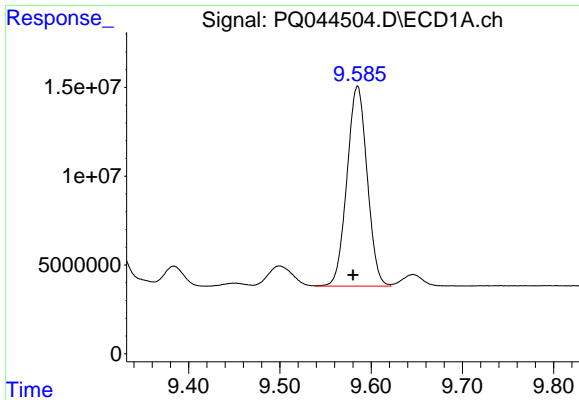
#34 AR-1260-4

R.T.: 9.233 min  
 Delta R.T.: 0.004 min  
 Response: 72843085  
 Conc: 373.07 ng/ml



#34 AR-1260-4

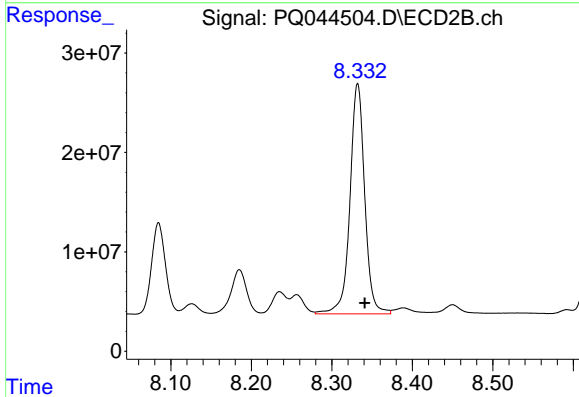
R.T.: 8.085 min  
 Delta R.T.: -0.010 min  
 Response: 109695723  
 Conc: 436.04 ng/ml



#35 AR-1260-5

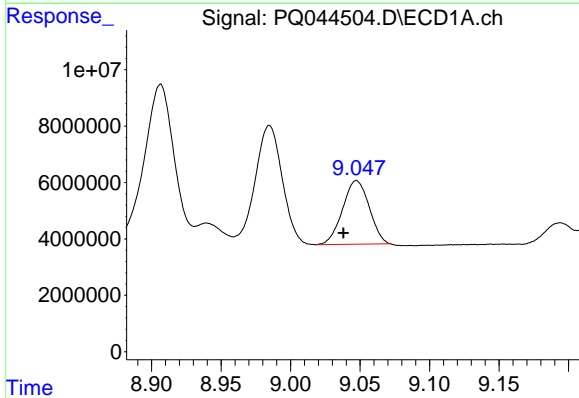
R.T.: 9.585 min  
 Delta R.T.: 0.005 min  
 Response: 173111316  
 Conc: 378.65 ng/ml

Instrument :  
 ECD\_Q  
 ClientSampleId :  
 AR1660330



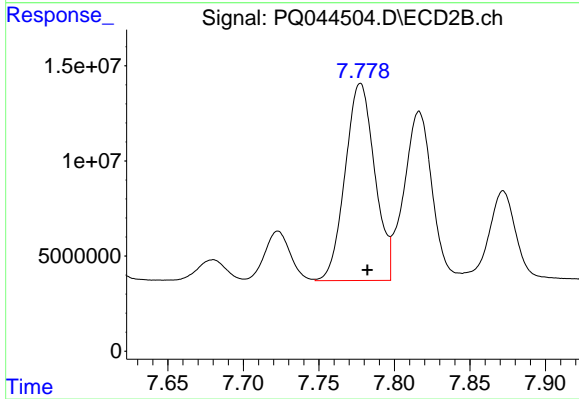
#35 AR-1260-5

R.T.: 8.332 min  
 Delta R.T.: -0.009 min  
 Response: 295711062  
 Conc: 461.38 ng/ml



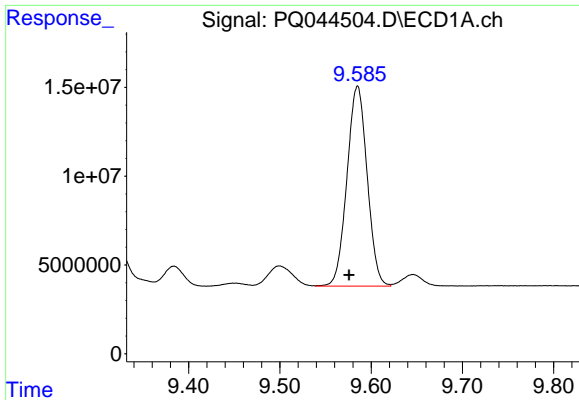
#36 AR-1262-1

R.T.: 9.047 min  
 Delta R.T.: 0.009 min  
 Response: 30120879  
 Conc: 277.34 ng/ml



#36 AR-1262-1

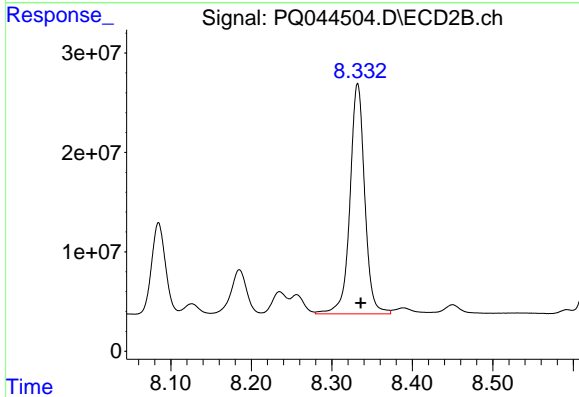
R.T.: 7.777 min  
 Delta R.T.: -0.005 min  
 Response: 141208288  
 Conc: 723.60 ng/ml



#37 AR-1262-2

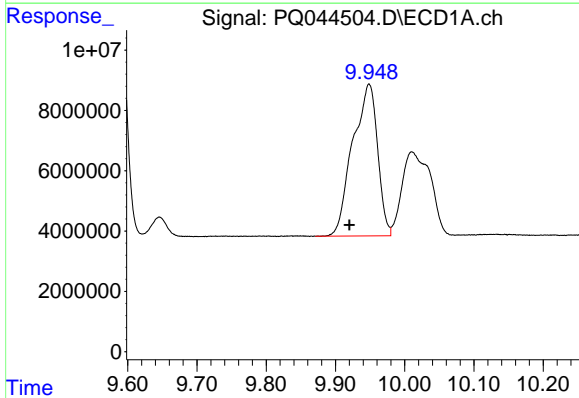
R.T.: 9.585 min  
 Delta R.T.: 0.009 min  
 Response: 173111316  
 Conc: 300.60 ng/ml

Instrument :  
 ECD\_Q  
 ClientSampleId :  
 AR1660330



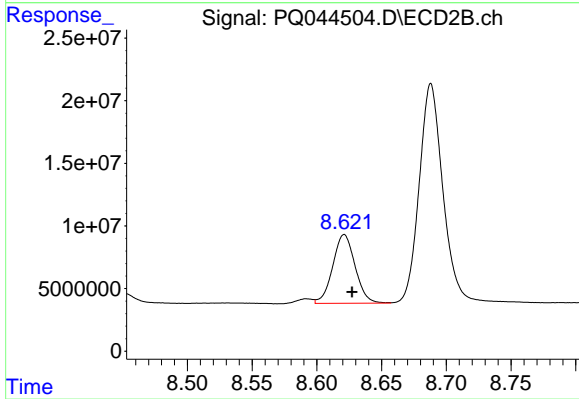
#37 AR-1262-2

R.T.: 8.332 min  
 Delta R.T.: -0.004 min  
 Response: 295711062  
 Conc: 373.75 ng/ml



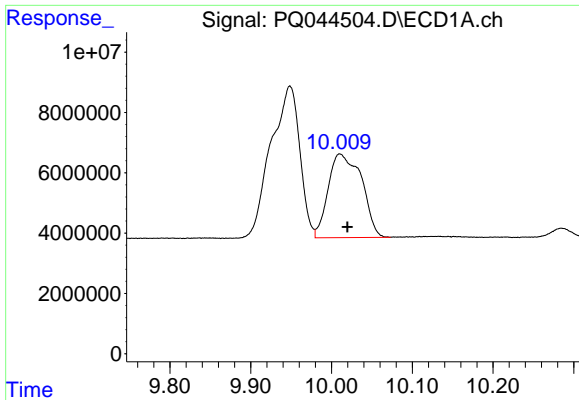
#38 AR-1262-3

R.T.: 9.949 min  
 Delta R.T.: 0.028 min  
 Response: 125458332  
 Conc: 302.41 ng/ml



#38 AR-1262-3

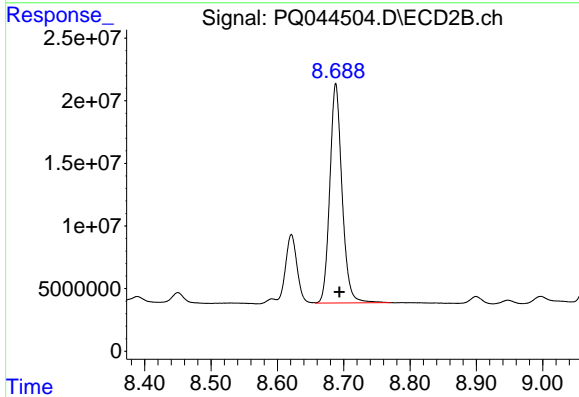
R.T.: 8.621 min  
 Delta R.T.: -0.006 min  
 Response: 66116676  
 Conc: 208.48 ng/ml



#39 AR-1262-4

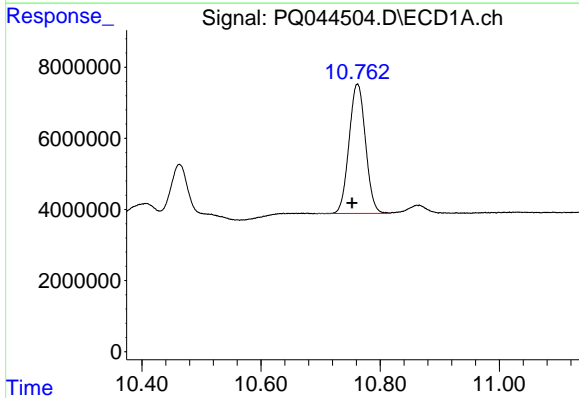
R.T.: 10.010 min  
Delta R.T.: -0.009 min  
Response: 79566445  
Conc: 252.57 ng/ml

Instrument :  
ECD\_Q  
ClientSampleId :  
AR1660330



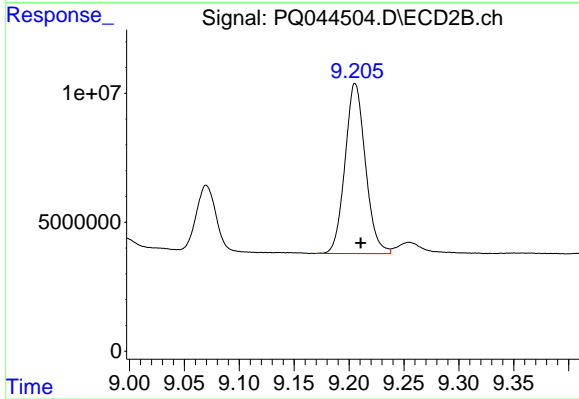
#39 AR-1262-4

R.T.: 8.688 min  
Delta R.T.: -0.005 min  
Response: 224368108  
Conc: 368.15 ng/ml



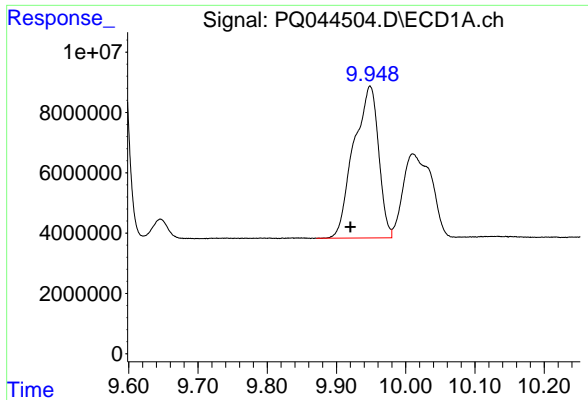
#40 AR-1262-5

R.T.: 10.762 min  
Delta R.T.: 0.009 min  
Response: 69787398  
Conc: 274.55 ng/ml



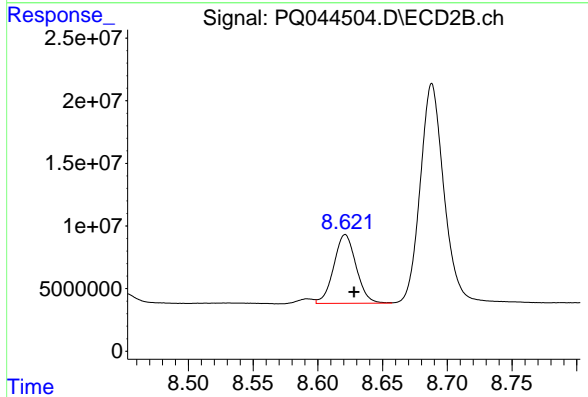
#40 AR-1262-5

R.T.: 9.206 min  
Delta R.T.: -0.005 min  
Response: 85371755  
Conc: 304.47 ng/ml

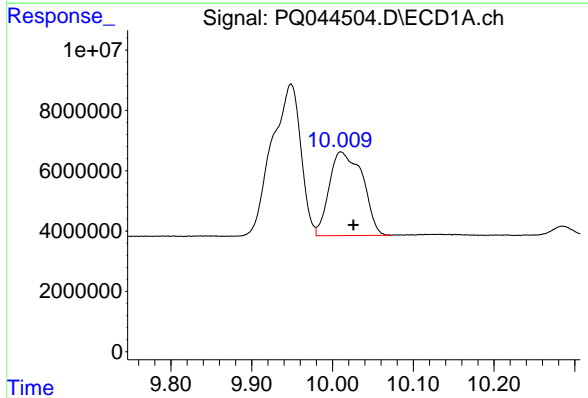


#41 AR-1268-1  
 R.T.: 9.949 min  
 Delta R.T.: 0.028 min  
 Response: 125458332  
 Conc: 175.45 ng/ml

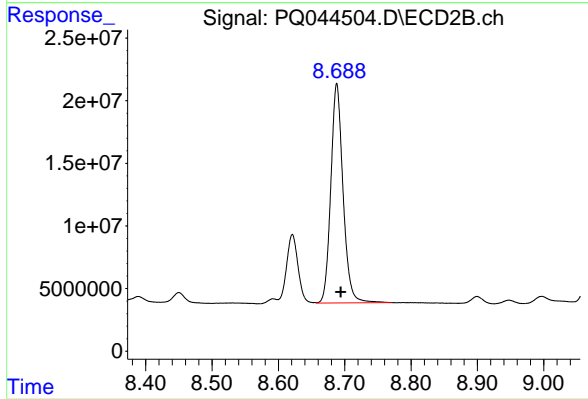
Instrument :  
 ECD\_Q  
 ClientSampled :  
 AR1660330



#41 AR-1268-1  
 R.T.: 8.621 min  
 Delta R.T.: -0.007 min  
 Response: 66116676  
 Conc: 68.55 ng/ml

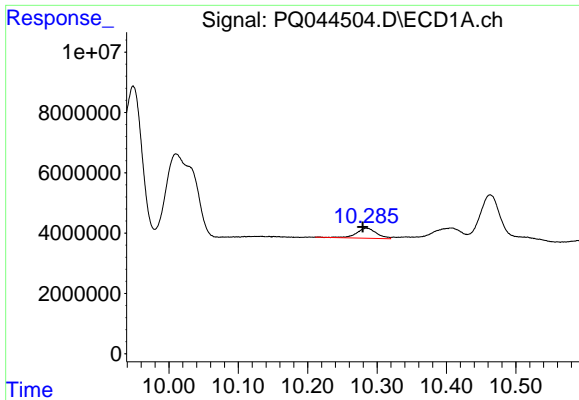


#42 AR-1268-2  
 R.T.: 10.010 min  
 Delta R.T.: -0.015 min  
 Response: 79566445  
 Conc: 117.08 ng/ml



#42 AR-1268-2  
 R.T.: 8.688 min  
 Delta R.T.: -0.006 min  
 Response: 224368108  
 Conc: 246.73 ng/ml

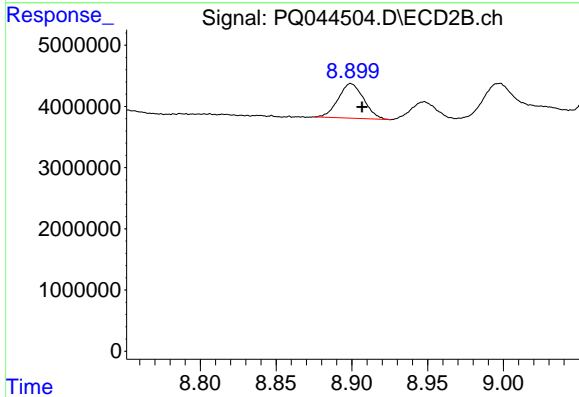




#43 AR-1268-3

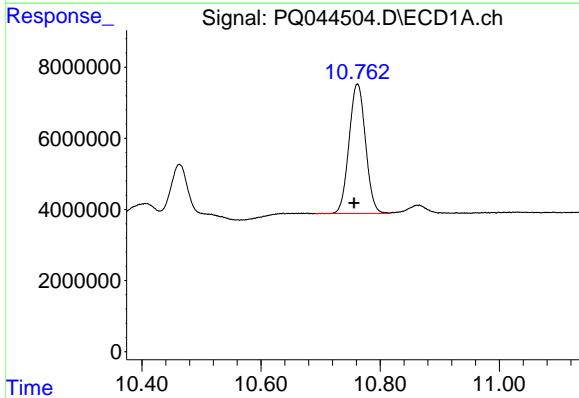
R.T.: 10.285 min  
 Delta R.T.: 0.005 min  
 Response: 6635736  
 Conc: 11.56 ng/ml

**Instrument :**  
 ECD\_Q  
**ClientSampled :**  
 AR1660330



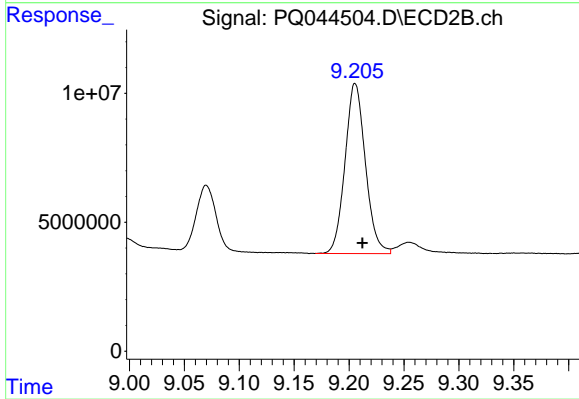
#43 AR-1268-3

R.T.: 8.899 min  
 Delta R.T.: -0.007 min  
 Response: 6603884  
 Conc: 8.72 ng/ml



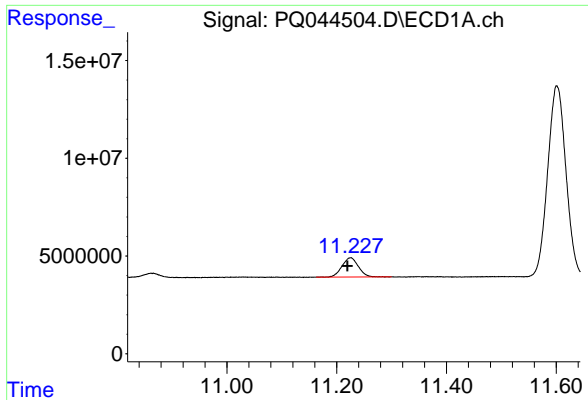
#44 AR-1268-4

R.T.: 10.762 min  
 Delta R.T.: 0.006 min  
 Response: 69787398  
 Conc: 242.23 ng/ml



#44 AR-1268-4

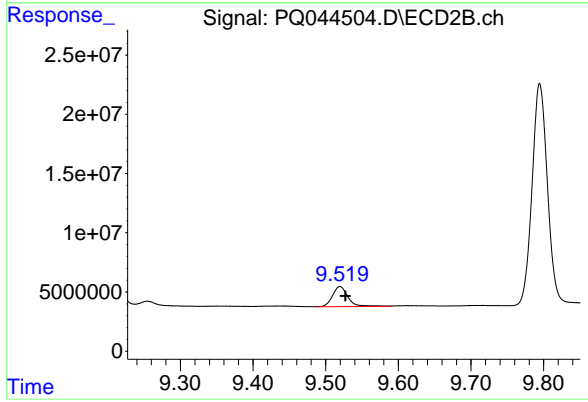
R.T.: 9.206 min  
 Delta R.T.: -0.007 min  
 Response: 85371755  
 Conc: 261.08 ng/ml



#45 AR-1268-5

R.T.: 11.226 min  
Delta R.T.: 0.006 min  
Response: 20468008  
Conc: 9.41 ng/ml

Instrument :  
ECD\_Q  
ClientSampleId :  
AR1660330



#45 AR-1268-5

R.T.: 9.520 min  
Delta R.T.: -0.008 min  
Response: 25229699  
Conc: 9.69 ng/ml