

Data Path : Z:\pestpcbsrv\HPCHEM1\ECD\_Q\Data\PQ102122\  
 Data File : PQ059713.D  
 Signal(s) : Signal #1: ECD1A.ch Signal #2: ECD2B.ch  
 Acq On : 20 Oct 2022 19:01  
 Operator : YP\AJ  
 Sample : PQ102122ICV500  
 Misc :  
 ALS Vial : 15 Sample Multiplier: 1

Instrument :  
 ECD\_Q  
 ClientSampleId :

Integration File signal 1: autoint1.e  
 Integration File signal 2: autoint2.e  
 Quant Time: Oct 21 08:03:55 2022  
 Quant Method : Z:\pestpcbsrv\HPCHEM1\ECD\_Q\Method\PQ102122.M  
 Quant Title : GC EXTRACTABLES  
 QLast Update : Fri Oct 21 08:02:10 2022  
 Response via : Initial Calibration  
 Integrator: ChemStation

Volume Inj. : 2 µl  
 Signal #1 Phase : ZB-MR1 Signal #2 Phase: ZB-MR2  
 Signal #1 Info : 30Mx0.32mmx 0.50µ Signal #2 Info : 30M x 0.32mm x 0.25µm

Compound	RT#1	RT#2	Resp#1	Resp#2	ng/ml	ng/ml
System Monitoring Compounds						
1) SA Tetrachlo...	3.483	2.828	586.1E6	417.9E6	51.825	52.419
2) SA Decachlor...	8.655	7.603	278.2E6	434.6E6	50.879	51.732
Target Compounds						
3) L1 AR-1016-1	4.583	3.835	211.6E6	148.3E6	503.220	519.468
4) L1 AR-1016-2	4.603	3.851	308.7E6	219.5E6	501.627	517.276
5) L1 AR-1016-3	4.661	4.013	189.0E6	115.0E6	506.832	522.234
6) L1 AR-1016-4	4.753	4.059	156.5E6	89131095	510.999	521.223
7) L1 AR-1016-5	5.038	4.256	155.1E6	116.2E6	501.243	517.518
8) L2 AR-1221-1	3.679	3.030	20964867	13815104	150.080	141.039
9) L2 AR-1221-2	3.762	3.107	29840297	19812372	285.806	270.816
10) L2 AR-1221-3	3.831	3.176	108.7E6	77084656	349.511	342.482
11) L3 AR-1232-1	3.831	3.176	108.7E6	77084656	445.136	440.419
12) L3 AR-1232-2	4.326	3.851	159.1E6	219.5E6	1042.570	1139.018
13) L3 AR-1232-3	4.603	4.013	308.7E6	115.0E6	1115.942	1158.433
14) L3 AR-1232-4	4.753	4.097	156.5E6	102.5E6	1097.900	1237.153
15) L3 AR-1232-5	4.848	4.256	112.1E6	116.2E6	1208.552	1161.512
16) L4 AR-1242-1	4.583	3.835	211.6E6	148.3E6	686.732	688.816
17) L4 AR-1242-2	4.603	3.851	308.7E6	219.5E6	689.370	693.111
18) L4 AR-1242-3	4.661	4.013	189.0E6	115.0E6	684.128	693.527
19) L4 AR-1242-4	4.753	4.097	156.5E6	102.5E6	683.154	675.660
20) L4 AR-1242-5	5.465	4.592	22560309	91691462	92.334	429.889 #
21) L5 AR-1248-1	4.583	3.835	211.6E6	148.3E6	876.393	886.446
22) L5 AR-1248-2	4.848	4.059	112.1E6	89131095	390.798	397.341
23) L5 AR-1248-3	5.038	4.097	155.1E6	102.5E6	410.261	470.575
24) L5 AR-1248-4	5.430	4.256	23872773	116.2E6	57.034	414.426 #
25) L5 AR-1248-5	5.465	4.630	22560309	14227786	55.185	52.225
26) L6 AR-1254-1	5.403	4.592	121.1E6	91691462	270.773	206.724
27) L6 AR-1254-2	5.619	4.737	135.2E6	88332166	196.381	226.118
28) L6 AR-1254-3	5.972	5.121	75078728	44240049	104.617	73.520 #
29) L6 AR-1254-4	6.254	5.345	44911600	18220351	88.617	44.786 #
30) L6 AR-1254-5	6.666	5.751	366.6E6	359.4E6	691.739	581.793
31) L7 AR-1260-1	6.136	5.249	282.6E6	231.8E6	498.415	510.637
32) L7 AR-1260-2	6.394	5.437	315.7E6	285.4E6	498.242	512.591
33) L7 AR-1260-3	6.747	5.580	185.5E6	271.3E6	501.863	510.622
34) L7 AR-1260-4	6.964	6.042	209.6E6	202.8E6	504.346	513.349
35) L7 AR-1260-5	7.274	6.285	375.8E6	495.0E6	505.009	505.281
36) L8 AR-1262-1	6.747	5.793	185.5E6	201.6E6	320.444	336.710
37) L8 AR-1262-2	7.274	6.285	375.8E6	495.0E6	422.002	441.558
38) L8 AR-1262-3	7.553	6.564	226.1E6	98429819	409.482	222.399 #
39) L8 AR-1262-4	7.623	6.622	55024121	363.0E6	213.308	433.431 #
40) L8 AR-1262-5	8.125	7.117	76116555	114.2E6	291.776	290.610
41) L9 AR-1268-1	7.553	6.564	226.1E6	98429819	238.918	73.855 #

Data Path : Z:\pestpcbsrv\HPCHEM1\ECD\_Q\Data\PQ102122\  
 Data File : PQ059713.D  
 Signal(s) : Signal #1: ECD1A.ch Signal #2: ECD2B.ch  
 Acq On : 20 Oct 2022 19:01  
 Operator : YP\AJ  
 Sample : PQ102122ICV500  
 Misc :  
 ALS Vial : 15 Sample Multiplier: 1

Instrument :  
 ECD\_Q  
 ClientSampleId :

Integration File signal 1: autoint1.e  
 Integration File signal 2: autoint2.e  
 Quant Time: Oct 21 08:03:55 2022  
 Quant Method : Z:\pestpcbsrv\HPCHEM1\ECD\_Q\Method\PQ102122.M  
 Quant Title : GC EXTRACTABLES  
 QLast Update : Fri Oct 21 08:02:10 2022  
 Response via : Initial Calibration  
 Integrator: ChemStation

Volume Inj. : 2 µl  
 Signal #1 Phase : ZB-MR1 Signal #2 Phase: ZB-MR2  
 Signal #1 Info : 30Mx0.32mmx 0.50µ Signal #2 Info : 30M x 0.32mm x 0.25µm

	Compound	RT#1	RT#2	Resp#1	Resp#2	ng/ml	ng/ml
42)	L9 AR-1268-2	7.623	6.622	55024121	363.0E6	64.461	297.481 #
43)	L9 AR-1268-3	7.805	6.828	6340263	8966199	9.167	8.534
44)	L9 AR-1268-4	8.125	7.117	76116555	114.2E6	264.335	260.452
45)	L9 AR-1268-5	8.420	7.385	25195438	38435405	12.361	11.358

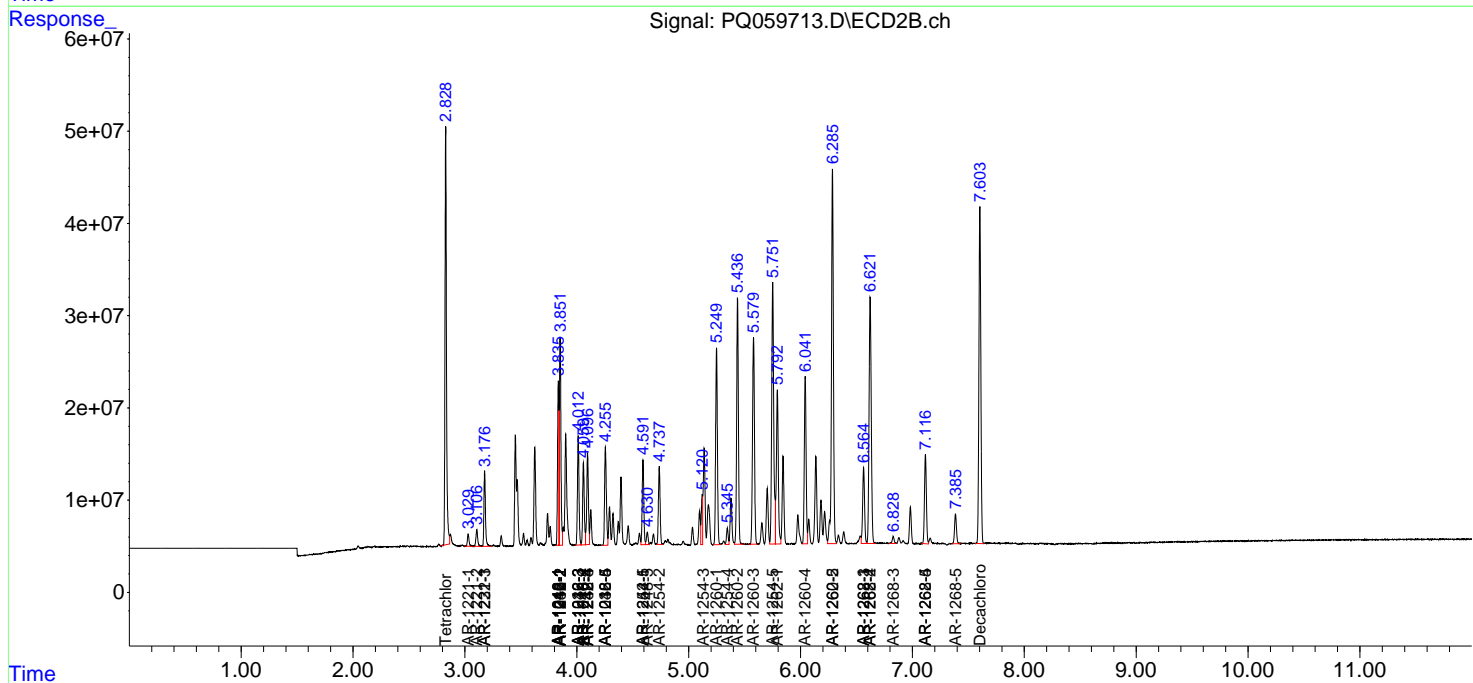
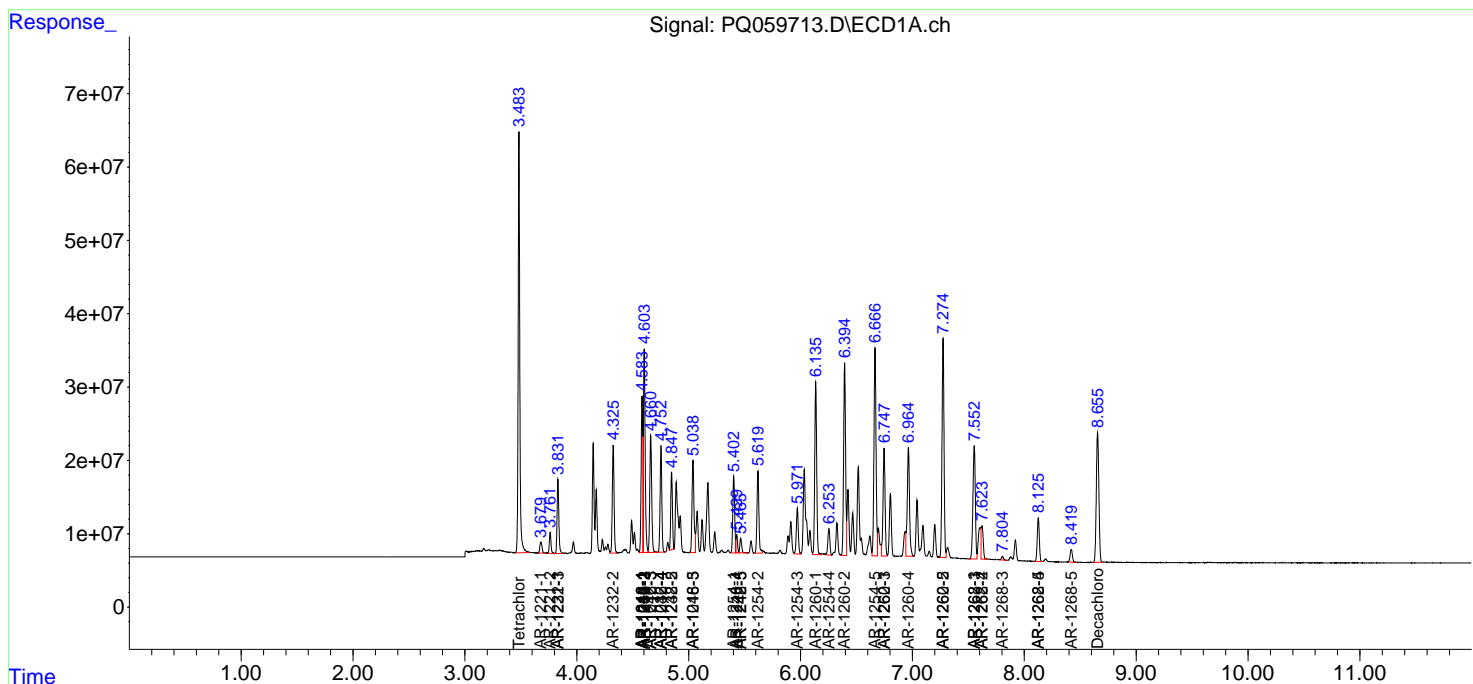
(f)=RT Delta > 1/2 Window (#)=Amounts differ by > 25% (m)=manual int.

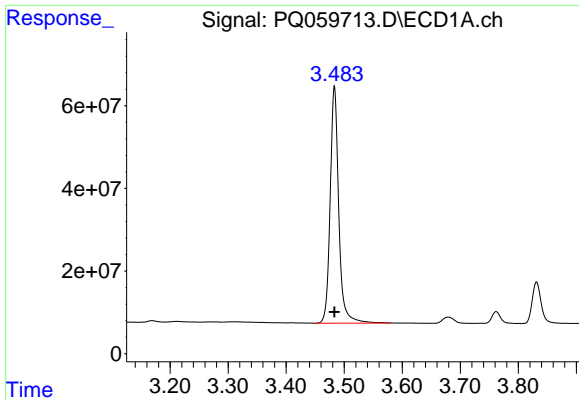
Data Path : Z:\pestpcbsrv\HPCHEM1\ECD\_Q\Data\PQ102122\  
 Data File : PQ059713.D  
 Signal(s) : Signal #1: ECD1A.ch Signal #2: ECD2B.ch  
 Acq On : 20 Oct 2022 19:01  
 Operator : YP\AJ  
 Sample : PQ102122ICV500  
 Misc :  
 ALS Vial : 15 Sample Multiplier: 1

Instrument :  
 ECD\_Q  
 ClientSampleId :

Integration File signal 1: autoint1.e  
 Integration File signal 2: autoint2.e  
 Quant Time: Oct 21 08:03:55 2022  
 Quant Method : Z:\pestpcbsrv\HPCHEM1\ECD\_Q\Method\PQ102122.M  
 Quant Title : GC EXTRACTABLES  
 QLast Update : Fri Oct 21 08:02:10 2022  
 Response via : Initial Calibration  
 Integrator: ChemStation

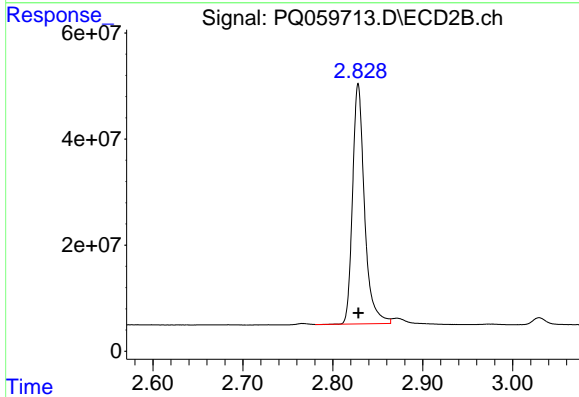
Volume Inj. : 2 µl  
 Signal #1 Phase : ZB-MR1 Signal #2 Phase: ZB-MR2  
 Signal #1 Info : 30Mx0.32mmx 0.50µ Signal #2 Info : 30M x 0.32mm x 0.25µm



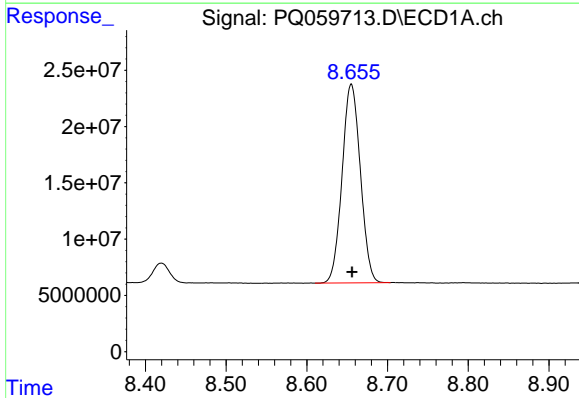


#1 Tetrachloro-m-xylene  
 R.T.: 3.483 min  
 Delta R.T.: 0.000 min  
 Response: 586055156  
 Conc: 51.82 ng/ml

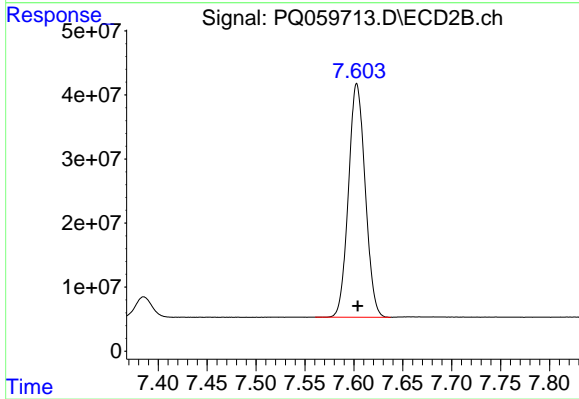
Instrument :  
 ECD\_Q  
 ClientSampleId :



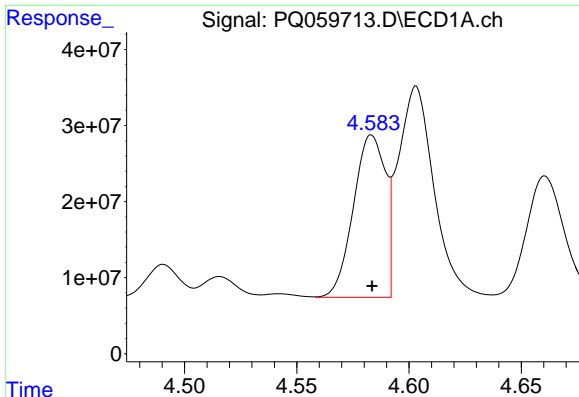
#1 Tetrachloro-m-xylene  
 R.T.: 2.828 min  
 Delta R.T.: 0.000 min  
 Response: 417875922  
 Conc: 52.42 ng/ml



#2 Decachlorobiphenyl  
 R.T.: 8.655 min  
 Delta R.T.: 0.000 min  
 Response: 278184334  
 Conc: 50.88 ng/ml



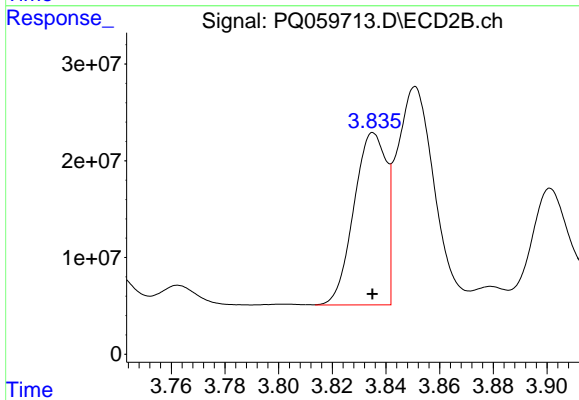
#2 Decachlorobiphenyl  
 R.T.: 7.603 min  
 Delta R.T.: 0.000 min  
 Response: 434636349  
 Conc: 51.73 ng/ml



#3 AR-1016-1

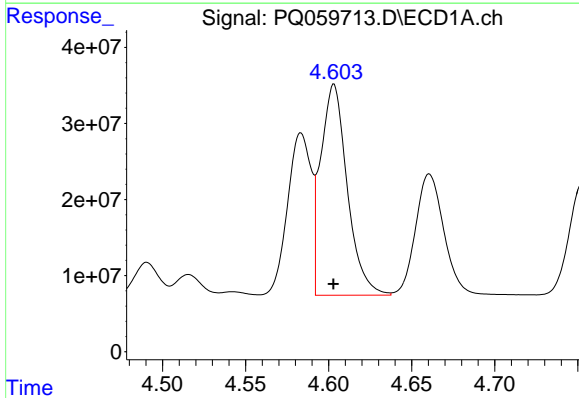
R.T.: 4.583 min  
 Delta R.T.: 0.000 min  
 Response: 211584719  
 Conc: 503.22 ng/ml

Instrument :  
 ECD\_Q  
 ClientSampleId :



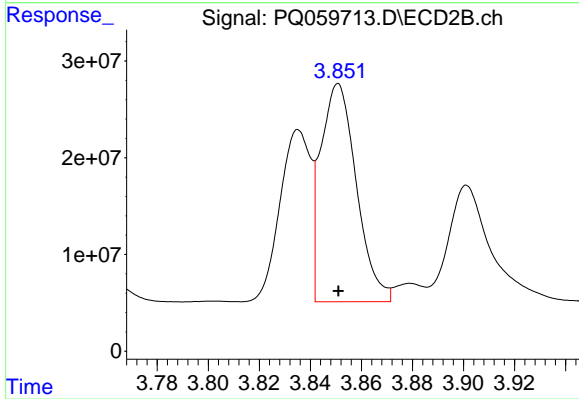
#3 AR-1016-1

R.T.: 3.835 min  
 Delta R.T.: 0.000 min  
 Response: 148269326  
 Conc: 519.47 ng/ml



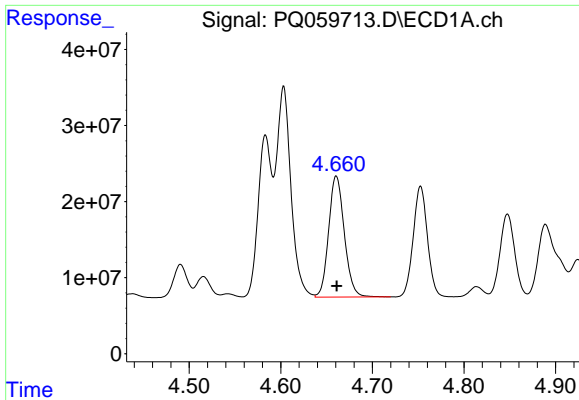
#4 AR-1016-2

R.T.: 4.603 min  
 Delta R.T.: 0.000 min  
 Response: 308679099  
 Conc: 501.63 ng/ml



#4 AR-1016-2

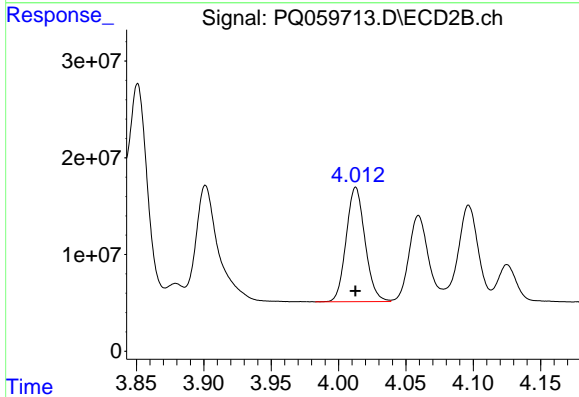
R.T.: 3.851 min  
 Delta R.T.: 0.000 min  
 Response: 219524877  
 Conc: 517.28 ng/ml



#5 AR-1016-3

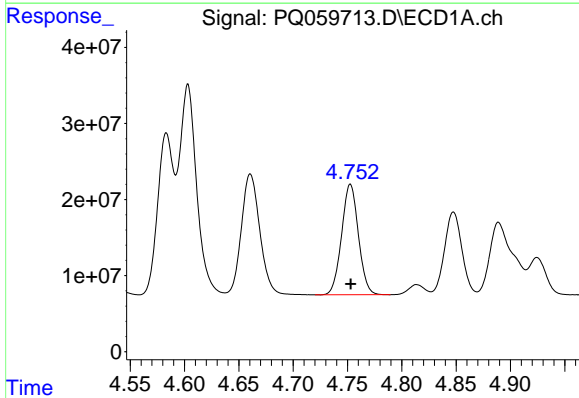
R.T.: 4.661 min  
 Delta R.T.: 0.000 min  
 Response: 189034810  
 Conc: 506.83 ng/ml

Instrument :  
 ECD\_Q  
 ClientSampleId :



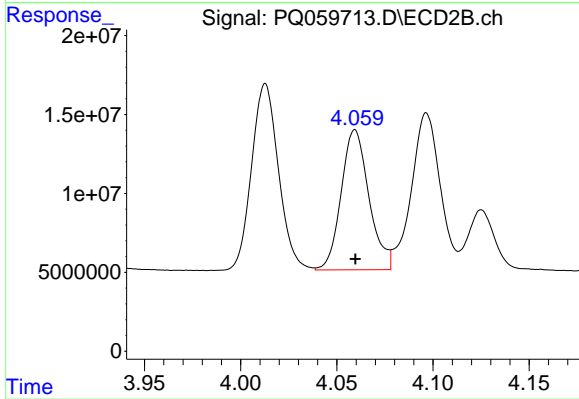
#5 AR-1016-3

R.T.: 4.013 min  
 Delta R.T.: 0.000 min  
 Response: 115047661  
 Conc: 522.23 ng/ml



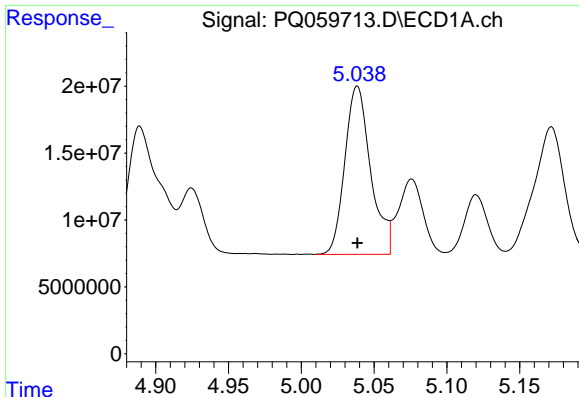
#6 AR-1016-4

R.T.: 4.753 min  
 Delta R.T.: 0.000 min  
 Response: 156464603  
 Conc: 511.00 ng/ml



#6 AR-1016-4

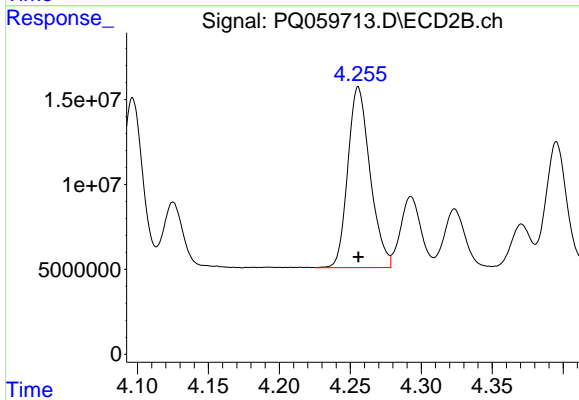
R.T.: 4.059 min  
 Delta R.T.: 0.000 min  
 Response: 89131095  
 Conc: 521.22 ng/ml



#7 AR-1016-5

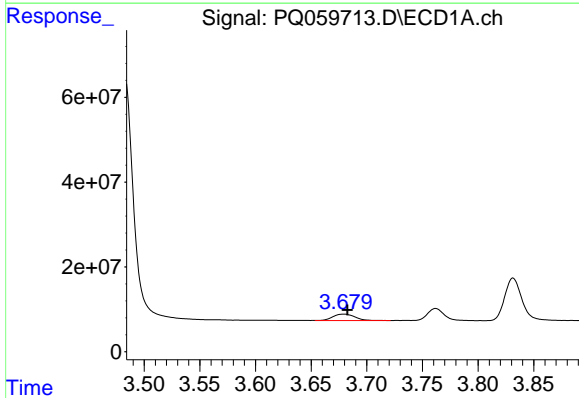
R.T.: 5.038 min  
 Delta R.T.: 0.000 min  
 Response: 155122266  
 Conc: 501.24 ng/ml

Instrument :  
 ECD\_Q  
 ClientSampleId :



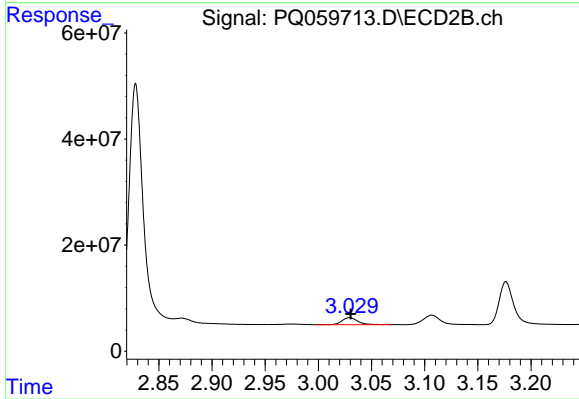
#7 AR-1016-5

R.T.: 4.256 min  
 Delta R.T.: 0.000 min  
 Response: 116155812  
 Conc: 517.52 ng/ml



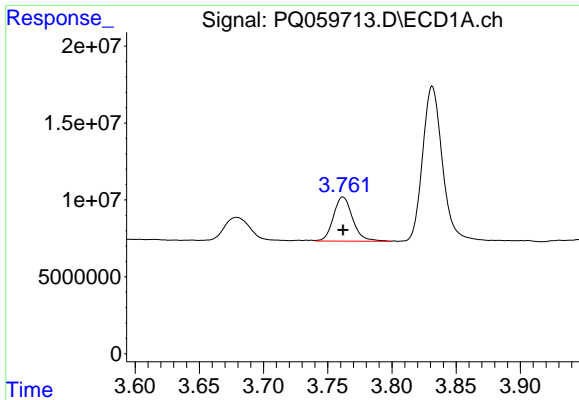
#8 AR-1221-1

R.T.: 3.679 min  
 Delta R.T.: -0.003 min  
 Response: 20964867  
 Conc: 150.08 ng/ml



#8 AR-1221-1

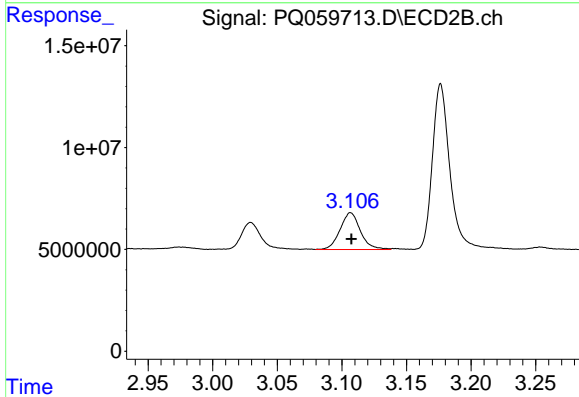
R.T.: 3.030 min  
 Delta R.T.: 0.000 min  
 Response: 13815104  
 Conc: 141.04 ng/ml



#9 AR-1221-2

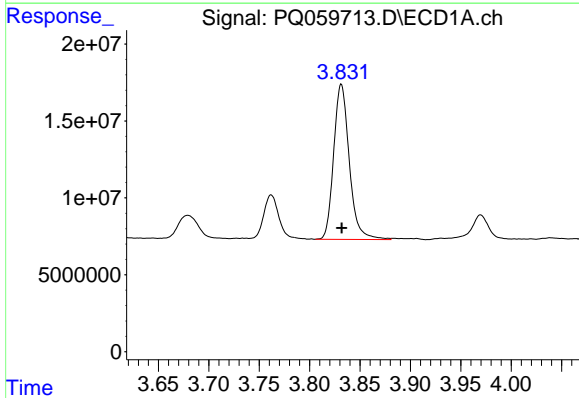
R.T.: 3.762 min  
 Delta R.T.: 0.000 min  
 Response: 29840297  
 Conc: 285.81 ng/ml

Instrument :  
 ECD\_Q  
 ClientSampleId :



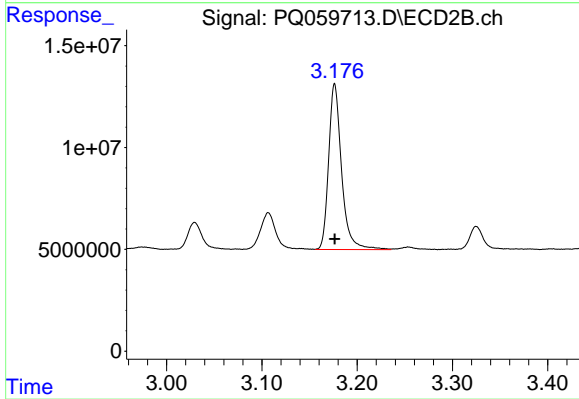
#9 AR-1221-2

R.T.: 3.107 min  
 Delta R.T.: 0.000 min  
 Response: 19812372  
 Conc: 270.82 ng/ml



#10 AR-1221-3

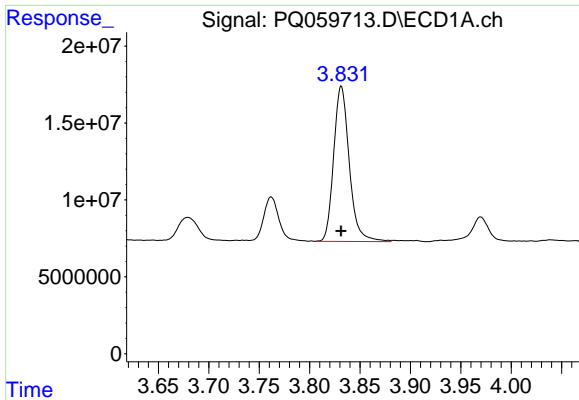
R.T.: 3.831 min  
 Delta R.T.: 0.000 min  
 Response: 108695821  
 Conc: 349.51 ng/ml



#10 AR-1221-3

R.T.: 3.176 min  
 Delta R.T.: 0.000 min  
 Response: 77084656  
 Conc: 342.48 ng/ml

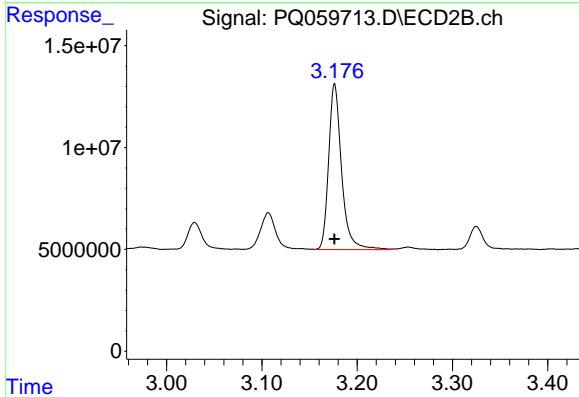




#11 AR-1232-1

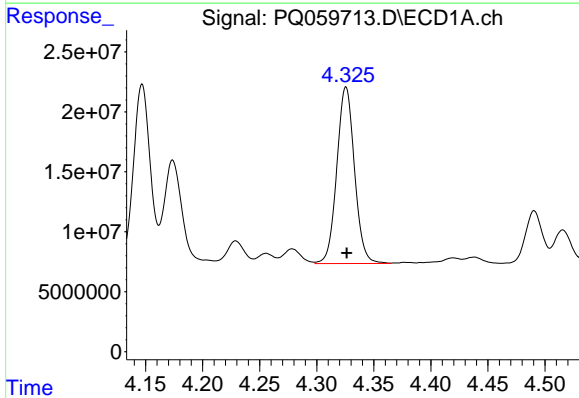
R.T.: 3.831 min  
 Delta R.T.: 0.000 min  
 Response: 108695821  
 Conc: 445.14 ng/ml

Instrument :  
 ECD\_Q  
 ClientSampleId :



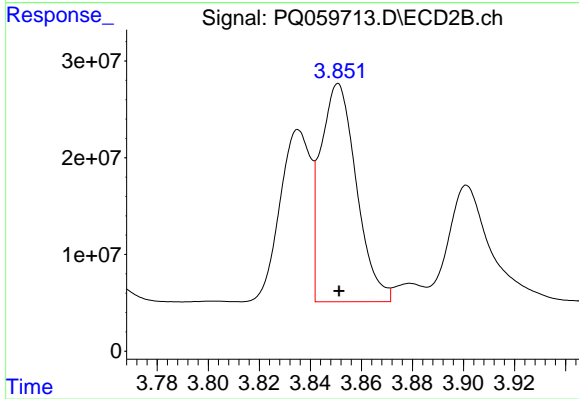
#11 AR-1232-1

R.T.: 3.176 min  
 Delta R.T.: 0.000 min  
 Response: 77084656  
 Conc: 440.42 ng/ml



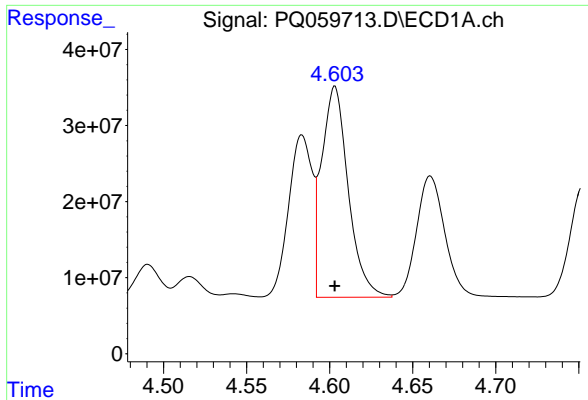
#12 AR-1232-2

R.T.: 4.326 min  
 Delta R.T.: 0.000 min  
 Response: 159097398  
 Conc: 1042.57 ng/ml



#12 AR-1232-2

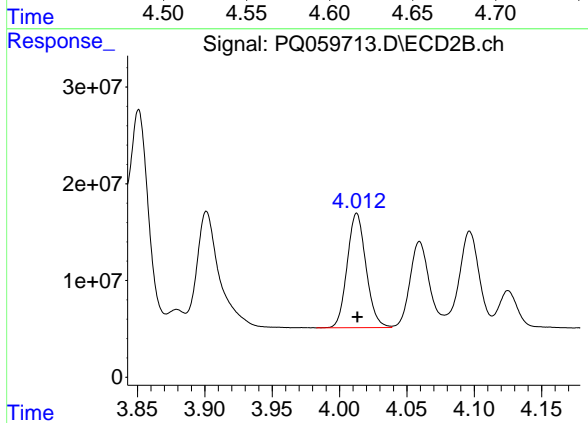
R.T.: 3.851 min  
 Delta R.T.: 0.000 min  
 Response: 219524877  
 Conc: 1139.02 ng/ml



#13 AR-1232-3

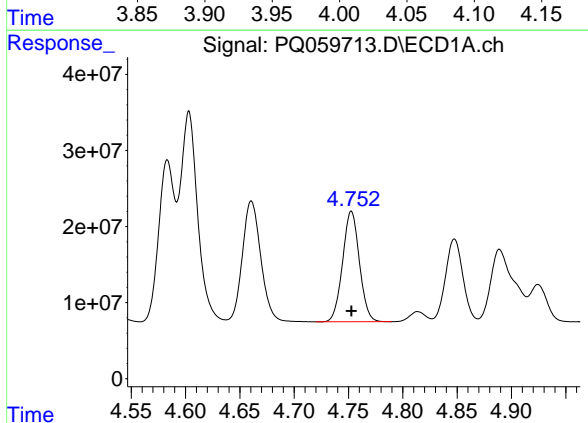
R.T.: 4.603 min  
 Delta R.T.: 0.000 min  
 Response: 308679099  
 Conc: 1115.94 ng/ml

Instrument :  
 ECD\_Q  
 ClientSampleId :



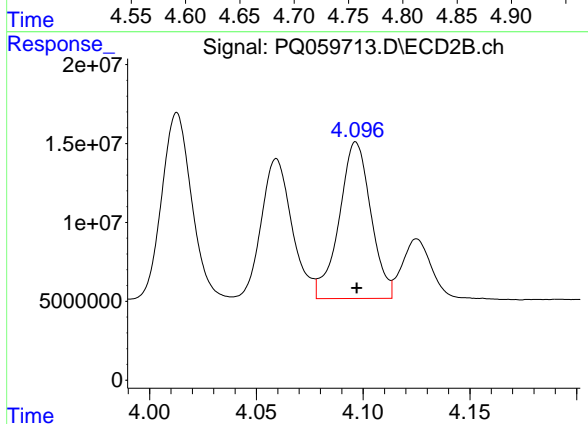
#13 AR-1232-3

R.T.: 4.013 min  
 Delta R.T.: 0.000 min  
 Response: 115047661  
 Conc: 1158.43 ng/ml



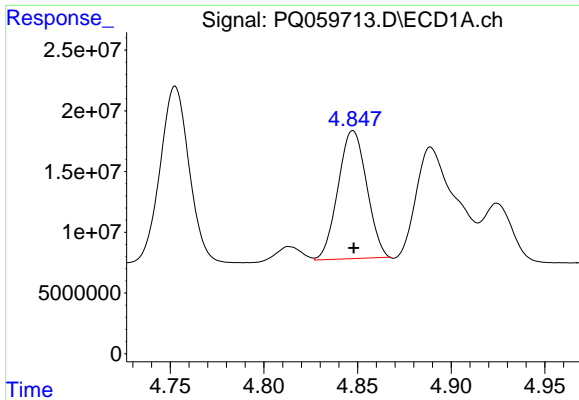
#14 AR-1232-4

R.T.: 4.753 min  
 Delta R.T.: 0.000 min  
 Response: 156464603  
 Conc: 1097.90 ng/ml



#14 AR-1232-4

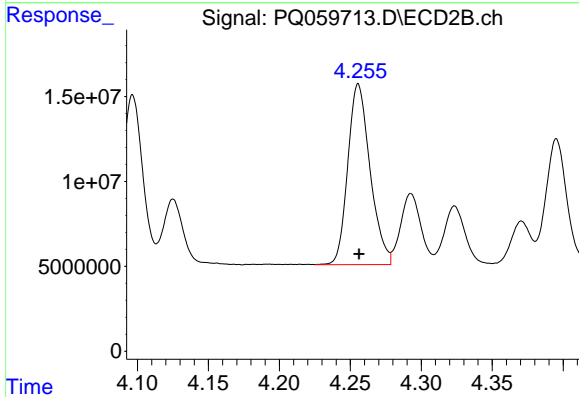
R.T.: 4.097 min  
 Delta R.T.: 0.000 min  
 Response: 102504943  
 Conc: 1237.15 ng/ml



#15 AR-1232-5

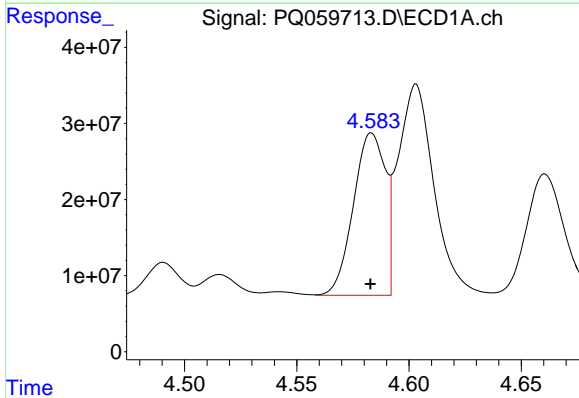
R.T.: 4.848 min  
 Delta R.T.: 0.000 min  
 Response: 112136383  
 Conc: 1208.55 ng/ml

Instrument :  
 ECD\_Q  
 ClientSampleId :



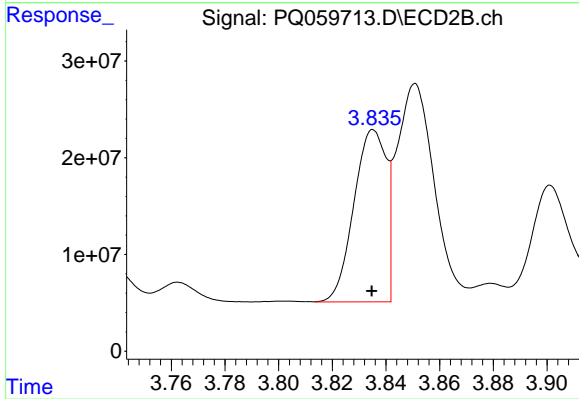
#15 AR-1232-5

R.T.: 4.256 min  
 Delta R.T.: 0.000 min  
 Response: 116155812  
 Conc: 1161.51 ng/ml



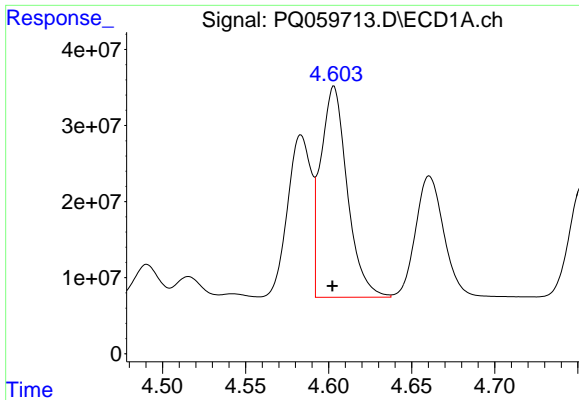
#16 AR-1242-1

R.T.: 4.583 min  
 Delta R.T.: 0.000 min  
 Response: 211584719  
 Conc: 686.73 ng/ml



#16 AR-1242-1

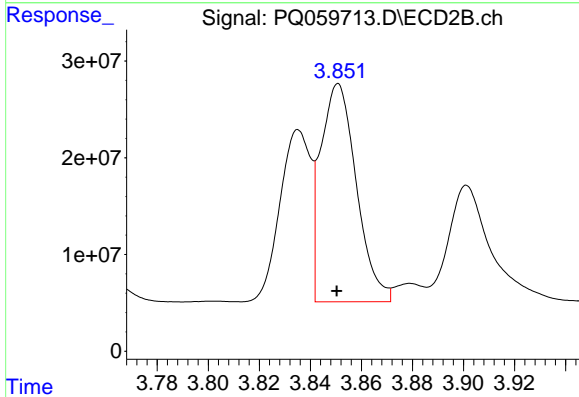
R.T.: 3.835 min  
 Delta R.T.: 0.000 min  
 Response: 148269326  
 Conc: 688.82 ng/ml



#17 AR-1242-2

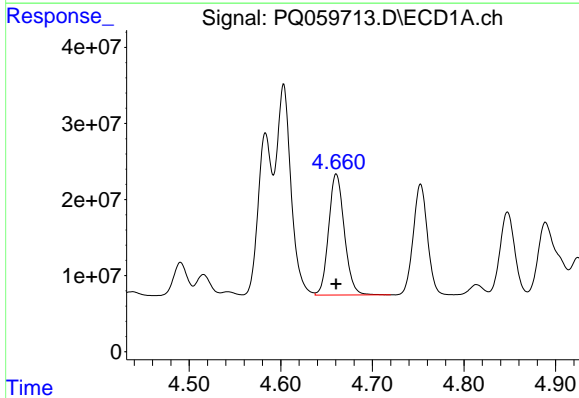
R.T.: 4.603 min  
 Delta R.T.: 0.000 min  
 Response: 308679099  
 Conc: 689.37 ng/ml

Instrument :  
 ECD\_Q  
 ClientSampleId :



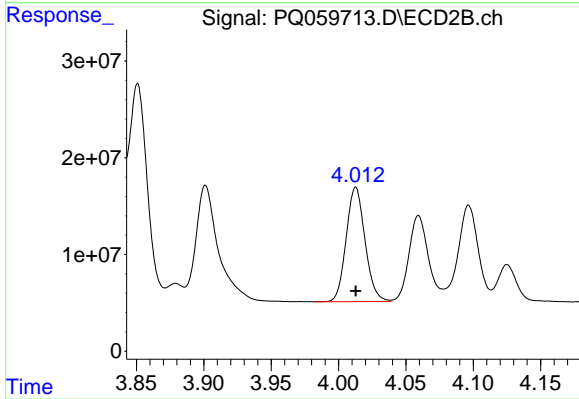
#17 AR-1242-2

R.T.: 3.851 min  
 Delta R.T.: 0.000 min  
 Response: 219524877  
 Conc: 693.11 ng/ml



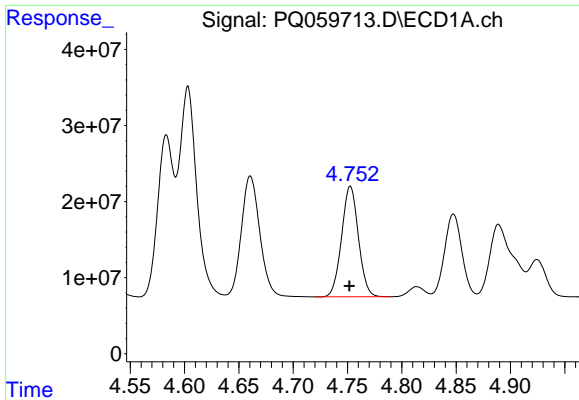
#18 AR-1242-3

R.T.: 4.661 min  
 Delta R.T.: 0.000 min  
 Response: 189034810  
 Conc: 684.13 ng/ml



#18 AR-1242-3

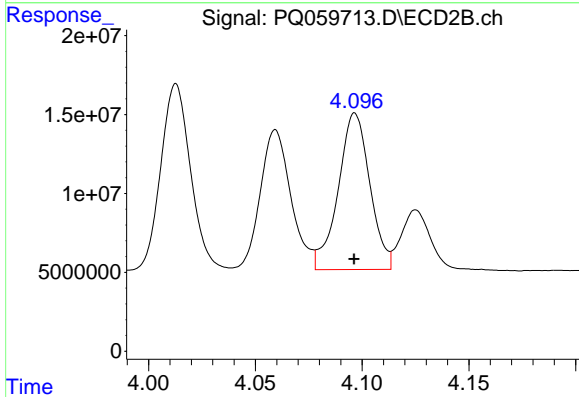
R.T.: 4.013 min  
 Delta R.T.: 0.000 min  
 Response: 115047661  
 Conc: 693.53 ng/ml



#19 AR-1242-4

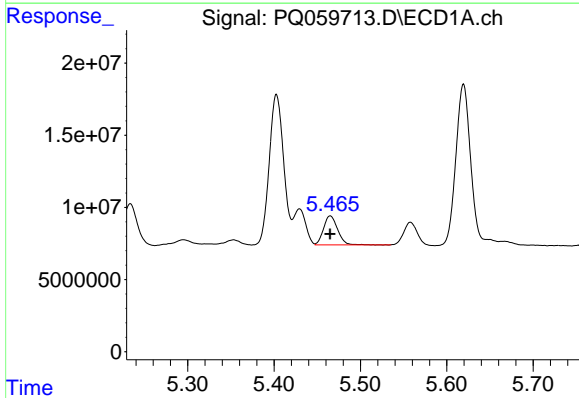
R.T.: 4.753 min  
 Delta R.T.: 0.000 min  
 Response: 156464603  
 Conc: 683.15 ng/ml

Instrument :  
 ECD\_Q  
 ClientSampleId :



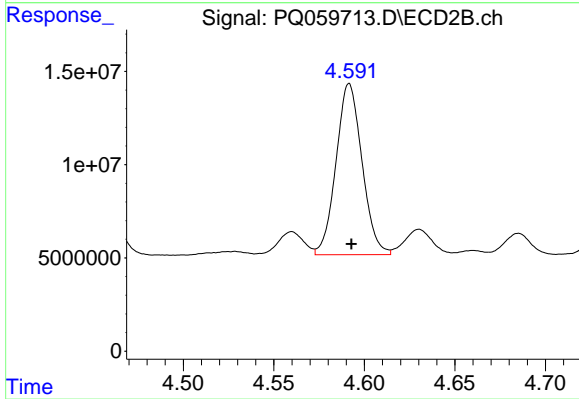
#19 AR-1242-4

R.T.: 4.097 min  
 Delta R.T.: 0.000 min  
 Response: 102504943  
 Conc: 675.66 ng/ml



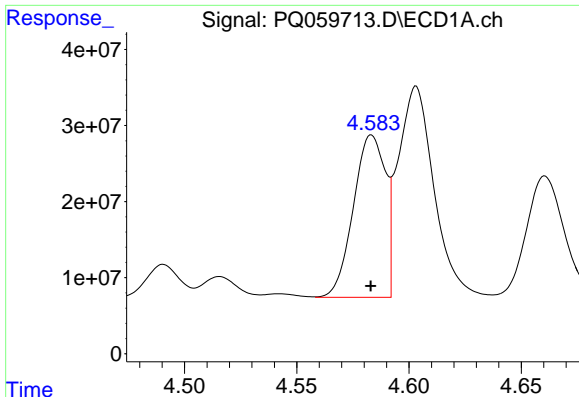
#20 AR-1242-5

R.T.: 5.465 min  
 Delta R.T.: 0.000 min  
 Response: 22560309  
 Conc: 92.33 ng/ml



#20 AR-1242-5

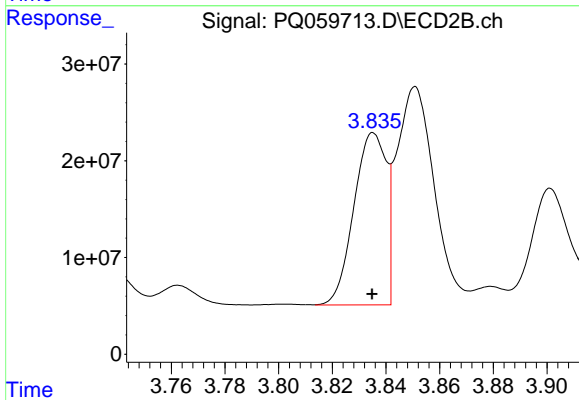
R.T.: 4.592 min  
 Delta R.T.: -0.001 min  
 Response: 91691462  
 Conc: 429.89 ng/ml



#21 AR-1248-1

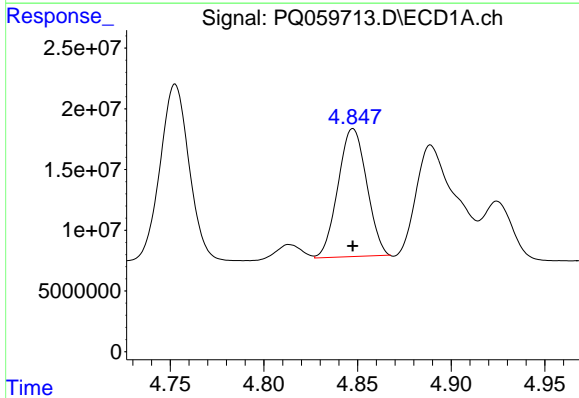
R.T.: 4.583 min  
 Delta R.T.: 0.000 min  
 Response: 211584719  
 Conc: 876.39 ng/ml

Instrument :  
 ECD\_Q  
 ClientSampleId :



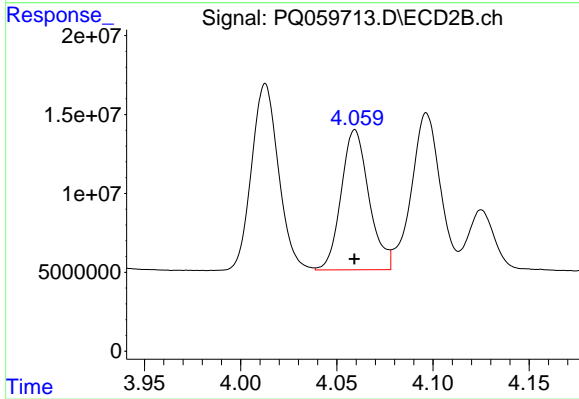
#21 AR-1248-1

R.T.: 3.835 min  
 Delta R.T.: 0.000 min  
 Response: 148269326  
 Conc: 886.45 ng/ml



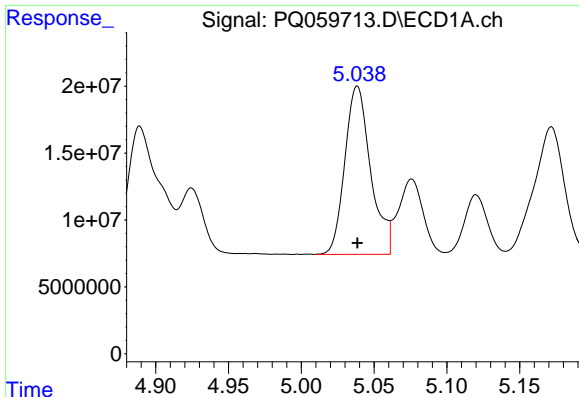
#22 AR-1248-2

R.T.: 4.848 min  
 Delta R.T.: 0.000 min  
 Response: 112136383  
 Conc: 390.80 ng/ml



#22 AR-1248-2

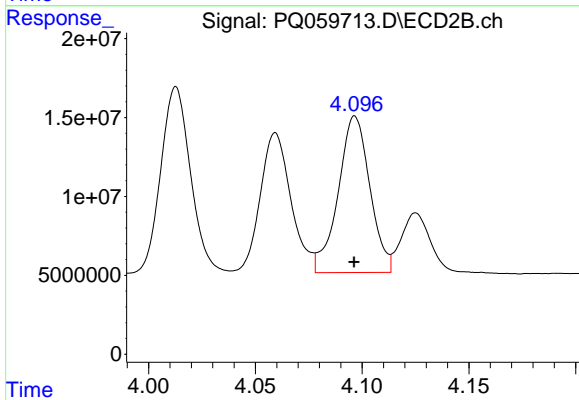
R.T.: 4.059 min  
 Delta R.T.: 0.000 min  
 Response: 89131095  
 Conc: 397.34 ng/ml



#23 AR-1248-3

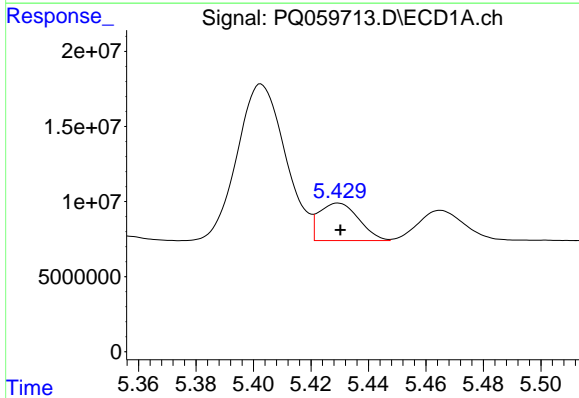
R.T.: 5.038 min  
 Delta R.T.: 0.000 min  
 Response: 155122266  
 Conc: 410.26 ng/ml

Instrument :  
 ECD\_Q  
 ClientSampleId :



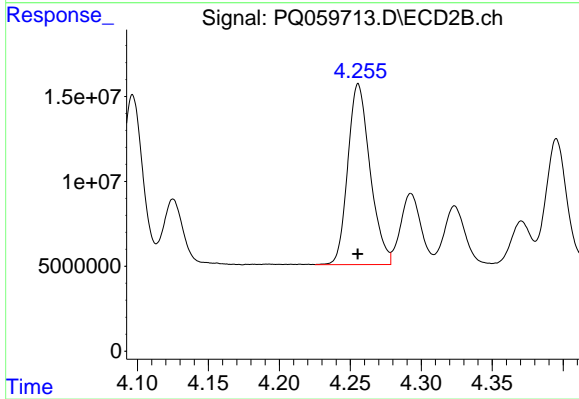
#23 AR-1248-3

R.T.: 4.097 min  
 Delta R.T.: 0.000 min  
 Response: 102504943  
 Conc: 470.57 ng/ml



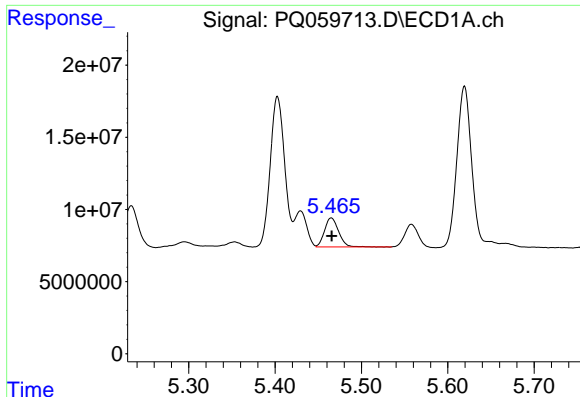
#24 AR-1248-4

R.T.: 5.430 min  
 Delta R.T.: 0.000 min  
 Response: 23872773  
 Conc: 57.03 ng/ml



#24 AR-1248-4

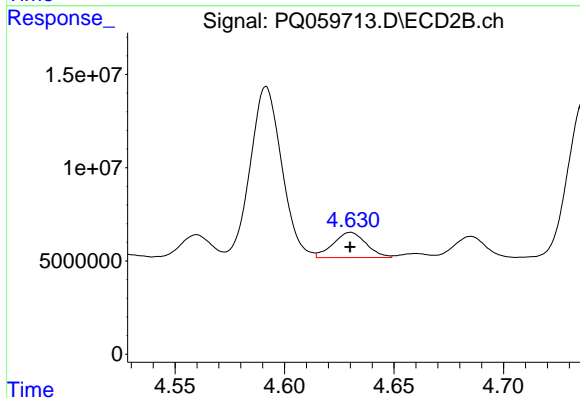
R.T.: 4.256 min  
 Delta R.T.: 0.000 min  
 Response: 116155812  
 Conc: 414.43 ng/ml



#25 AR-1248-5

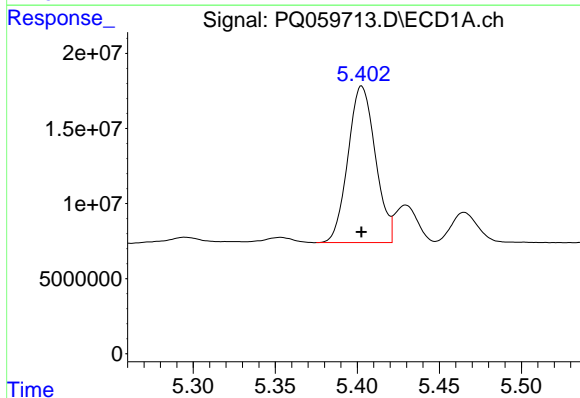
R.T.: 5.465 min  
 Delta R.T.: 0.000 min  
 Response: 22560309  
 Conc: 55.19 ng/ml

Instrument :  
 ECD\_Q  
 ClientSampleId :



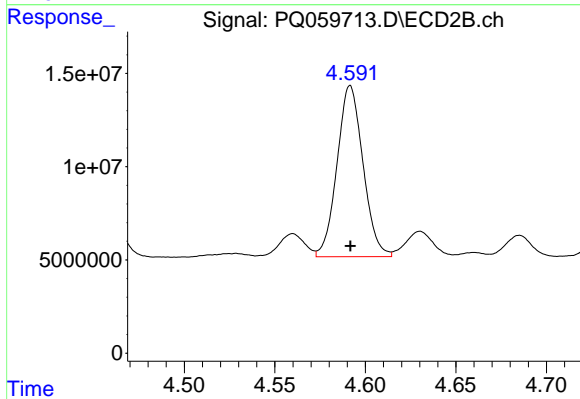
#25 AR-1248-5

R.T.: 4.630 min  
 Delta R.T.: 0.000 min  
 Response: 14227786  
 Conc: 52.22 ng/ml



#26 AR-1254-1

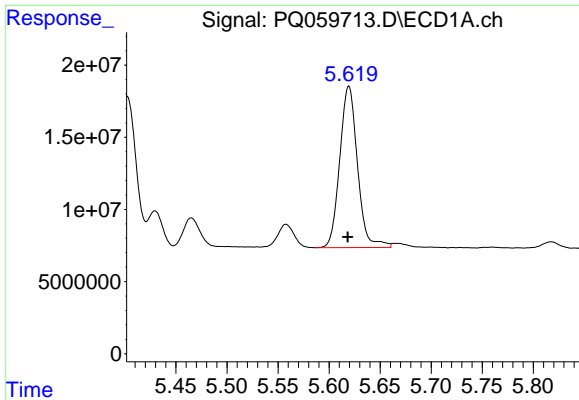
R.T.: 5.403 min  
 Delta R.T.: 0.000 min  
 Response: 121079921  
 Conc: 270.77 ng/ml



#26 AR-1254-1

R.T.: 4.592 min  
 Delta R.T.: 0.000 min  
 Response: 91691462  
 Conc: 206.72 ng/ml

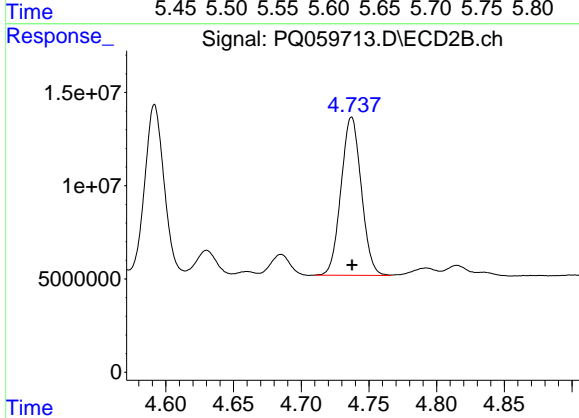




#27 AR-1254-2

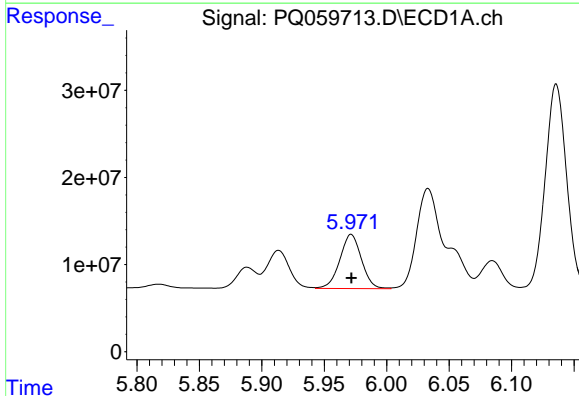
R.T.: 5.619 min  
 Delta R.T.: 0.001 min  
 Response: 135162625  
 Conc: 196.38 ng/ml

Instrument :  
 ECD\_Q  
 ClientSampleId :



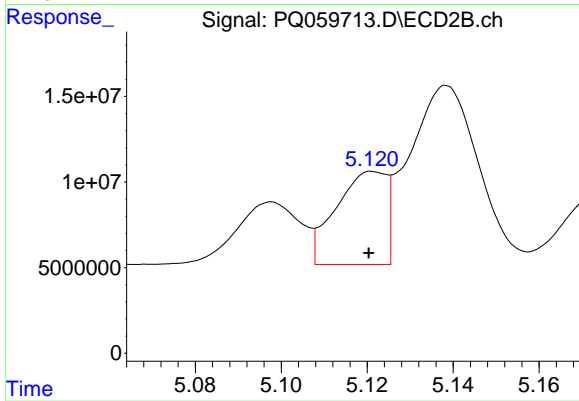
#27 AR-1254-2

R.T.: 4.737 min  
 Delta R.T.: 0.000 min  
 Response: 88332166  
 Conc: 226.12 ng/ml



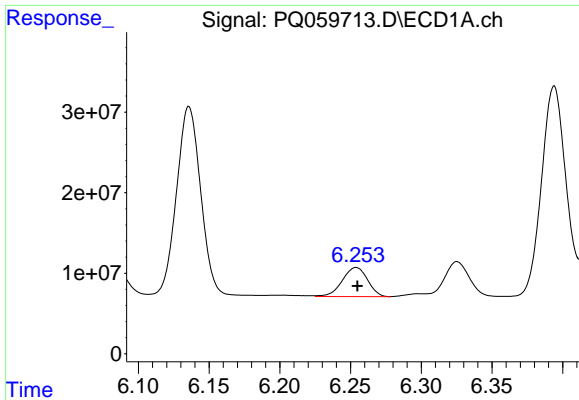
#28 AR-1254-3

R.T.: 5.972 min  
 Delta R.T.: 0.000 min  
 Response: 75078728  
 Conc: 104.62 ng/ml



#28 AR-1254-3

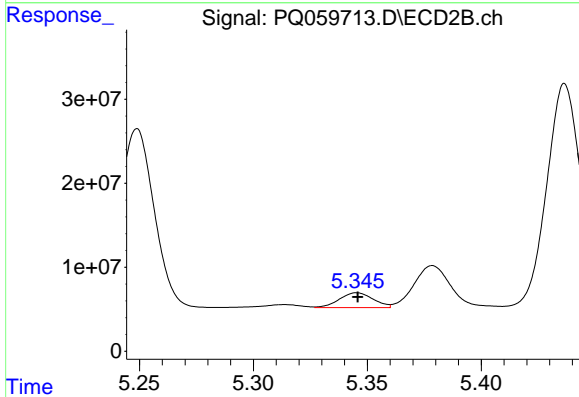
R.T.: 5.121 min  
 Delta R.T.: 0.000 min  
 Response: 44240049  
 Conc: 73.52 ng/ml



#29 AR-1254-4

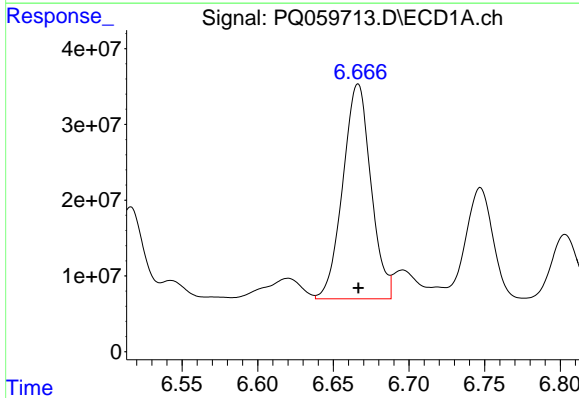
R.T.: 6.254 min  
 Delta R.T.: 0.000 min  
 Response: 44911600  
 Conc: 88.62 ng/ml

Instrument :  
 ECD\_Q  
 ClientSampleId :



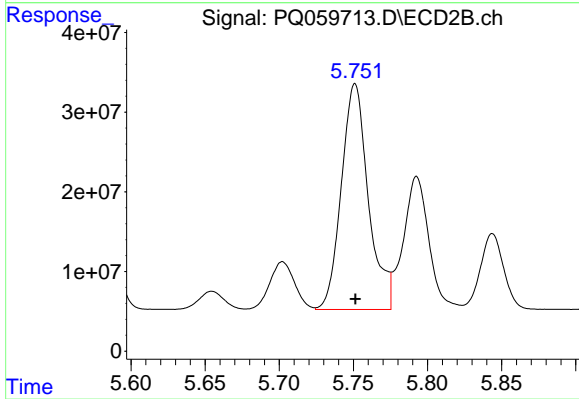
#29 AR-1254-4

R.T.: 5.345 min  
 Delta R.T.: 0.000 min  
 Response: 18220351  
 Conc: 44.79 ng/ml



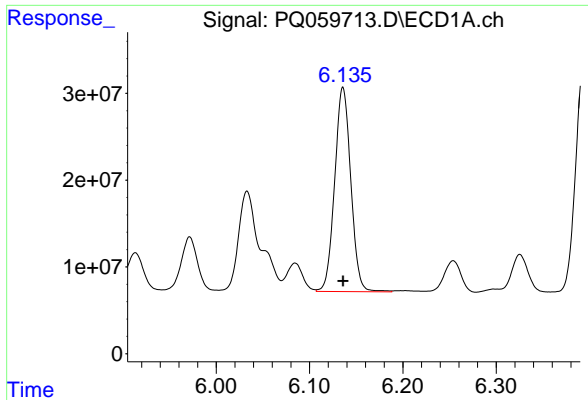
#30 AR-1254-5

R.T.: 6.666 min  
 Delta R.T.: 0.000 min  
 Response: 366599983  
 Conc: 691.74 ng/ml



#30 AR-1254-5

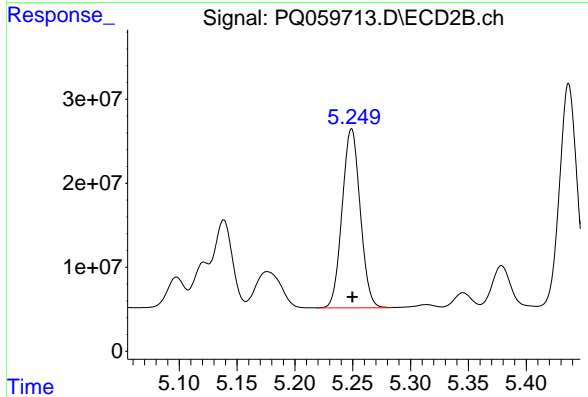
R.T.: 5.751 min  
 Delta R.T.: 0.000 min  
 Response: 359416873  
 Conc: 581.79 ng/ml



#31 AR-1260-1

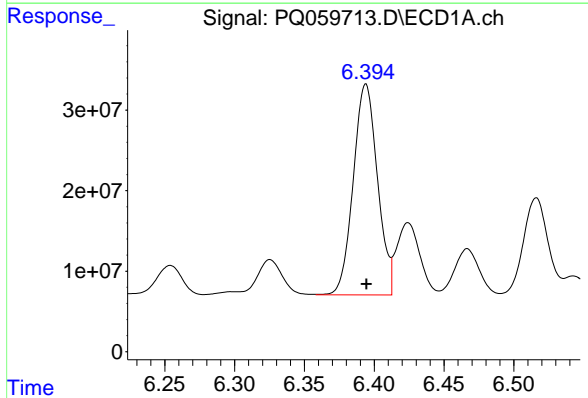
R.T.: 6.136 min  
 Delta R.T.: 0.000 min  
 Response: 282645752  
 Conc: 498.41 ng/ml

Instrument :  
 ECD\_Q  
 ClientSampleId :



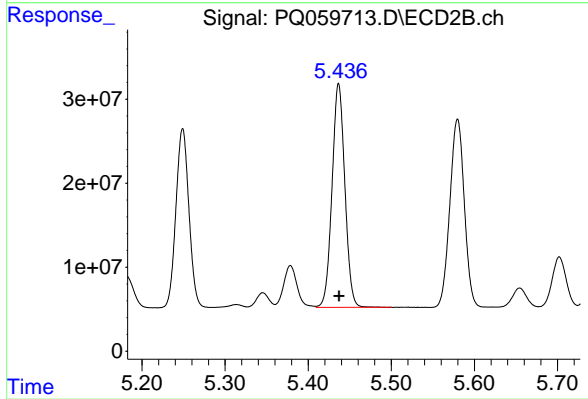
#31 AR-1260-1

R.T.: 5.249 min  
 Delta R.T.: 0.000 min  
 Response: 231750234  
 Conc: 510.64 ng/ml



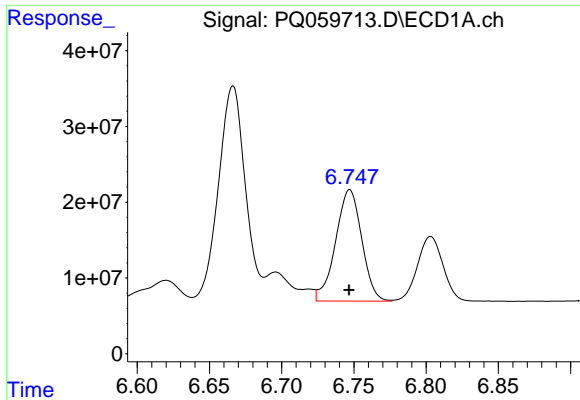
#32 AR-1260-2

R.T.: 6.394 min  
 Delta R.T.: 0.000 min  
 Response: 315737567  
 Conc: 498.24 ng/ml



#32 AR-1260-2

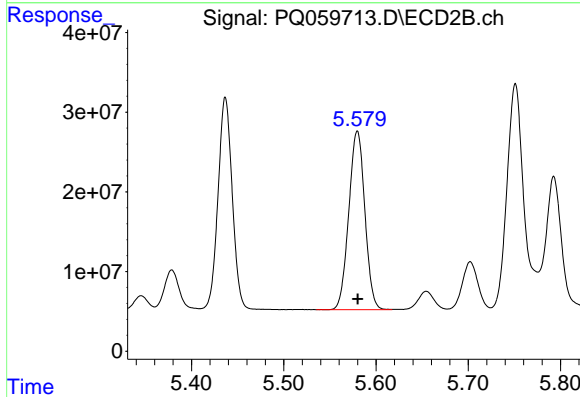
R.T.: 5.437 min  
 Delta R.T.: 0.000 min  
 Response: 285433349  
 Conc: 512.59 ng/ml



#33 AR-1260-3

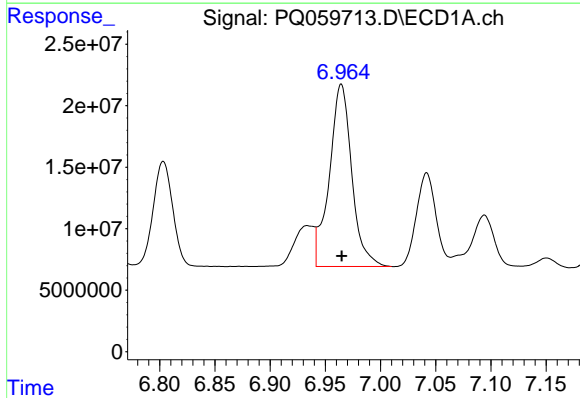
R.T.: 6.747 min  
 Delta R.T.: 0.000 min  
 Response: 185483657  
 Conc: 501.86 ng/ml

Instrument :  
 ECD\_Q  
 ClientSampleId :



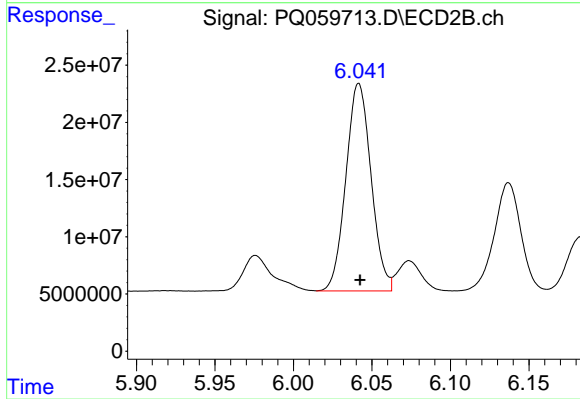
#33 AR-1260-3

R.T.: 5.580 min  
 Delta R.T.: 0.000 min  
 Response: 271261981  
 Conc: 510.62 ng/ml



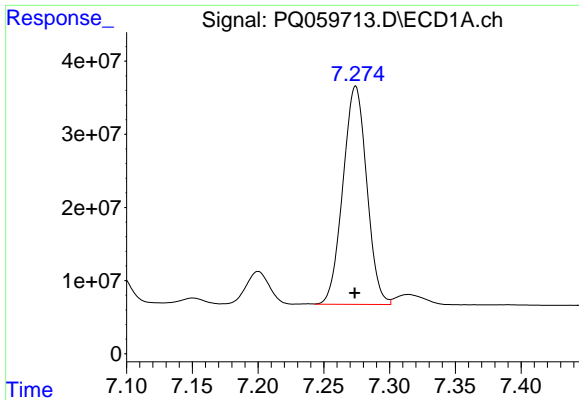
#34 AR-1260-4

R.T.: 6.964 min  
 Delta R.T.: 0.000 min  
 Response: 209630594  
 Conc: 504.35 ng/ml



#34 AR-1260-4

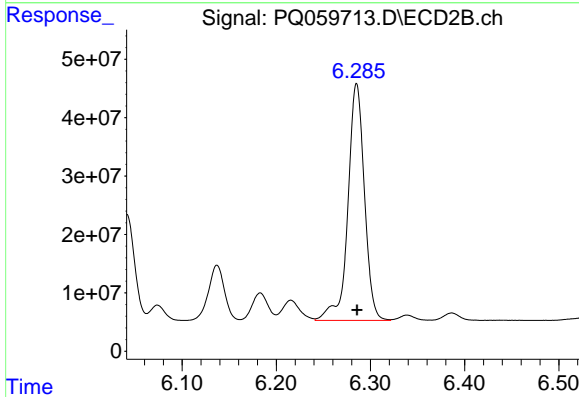
R.T.: 6.042 min  
 Delta R.T.: 0.000 min  
 Response: 202839189  
 Conc: 513.35 ng/ml



#35 AR-1260-5

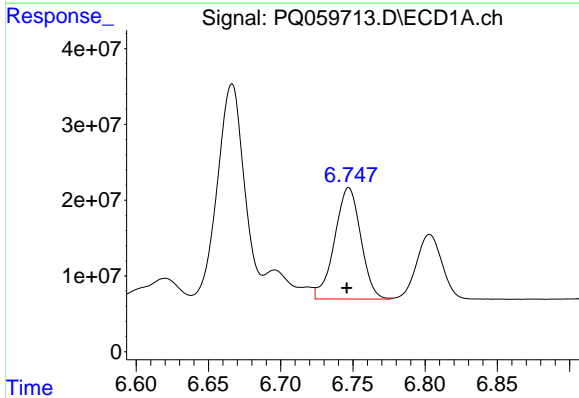
R.T.: 7.274 min  
 Delta R.T.: 0.000 min  
 Response: 375806202  
 Conc: 505.01 ng/ml

Instrument :  
 ECD\_Q  
 ClientSampleId :



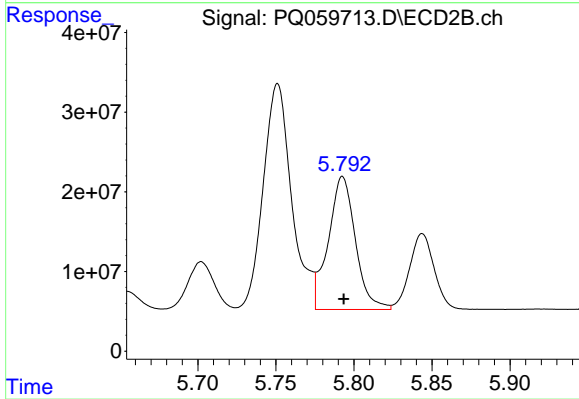
#35 AR-1260-5

R.T.: 6.285 min  
 Delta R.T.: 0.000 min  
 Response: 494950862  
 Conc: 505.28 ng/ml



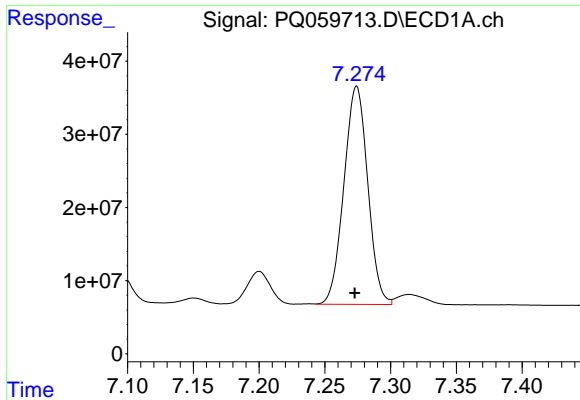
#36 AR-1262-1

R.T.: 6.747 min  
 Delta R.T.: 0.001 min  
 Response: 185483657  
 Conc: 320.44 ng/ml



#36 AR-1262-1

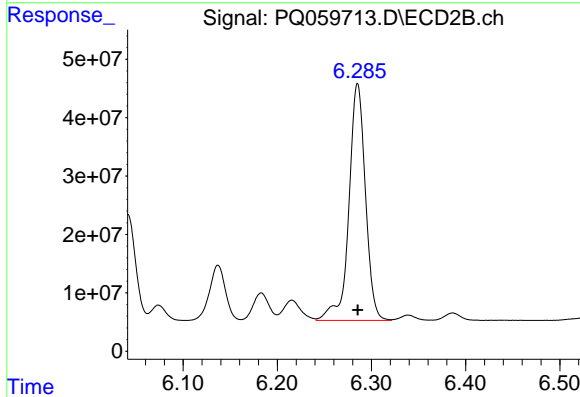
R.T.: 5.793 min  
 Delta R.T.: 0.000 min  
 Response: 201553476  
 Conc: 336.71 ng/ml



#37 AR-1262-2

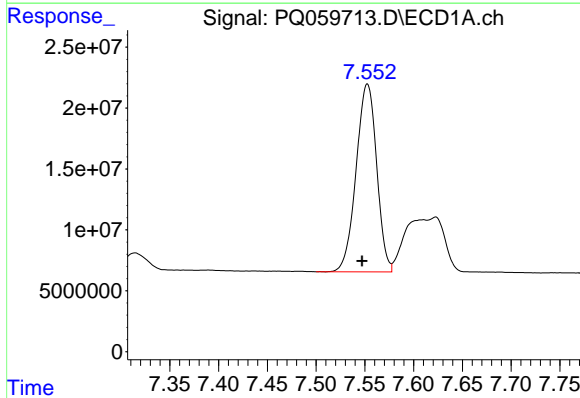
R.T.: 7.274 min  
Delta R.T.: 0.001 min  
Response: 375806202  
Conc: 422.00 ng/ml

Instrument :  
ECD\_Q  
ClientSampleId :



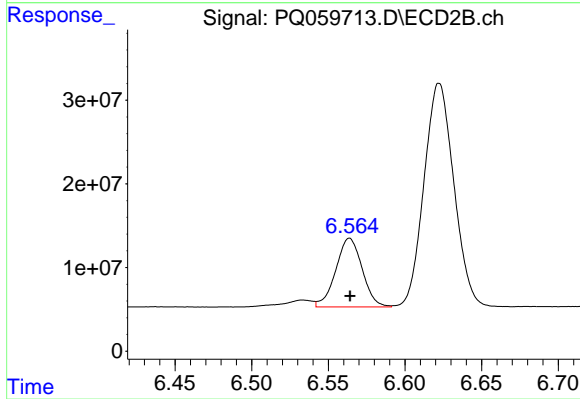
#37 AR-1262-2

R.T.: 6.285 min  
Delta R.T.: 0.000 min  
Response: 494950862  
Conc: 441.56 ng/ml



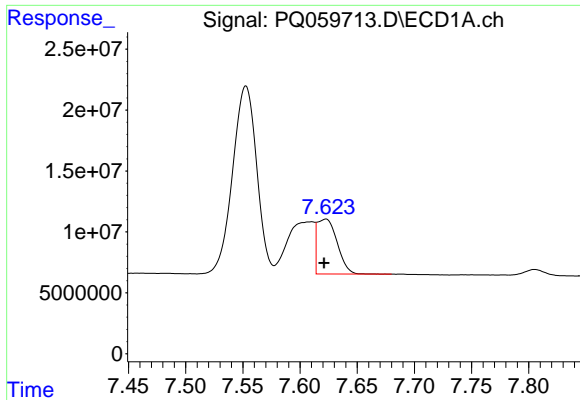
#38 AR-1262-3

R.T.: 7.553 min  
Delta R.T.: 0.005 min  
Response: 226138141  
Conc: 409.48 ng/ml



#38 AR-1262-3

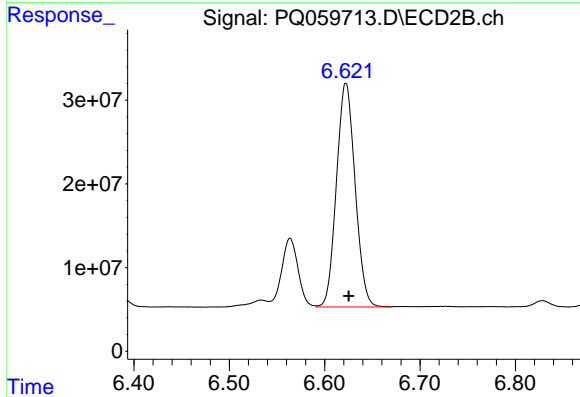
R.T.: 6.564 min  
Delta R.T.: 0.000 min  
Response: 98429819  
Conc: 222.40 ng/ml



#39 AR-1262-4

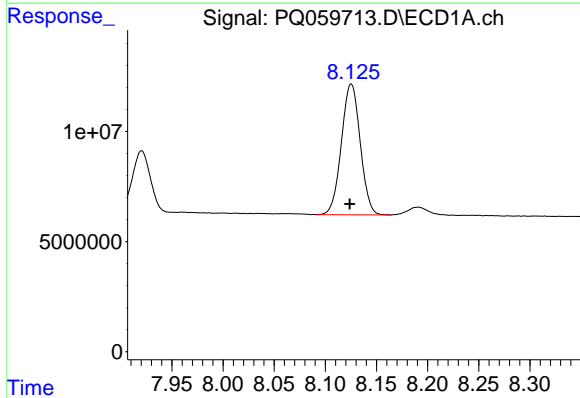
R.T.: 7.623 min  
 Delta R.T.: 0.002 min  
 Response: 55024121  
 Conc: 213.31 ng/ml

Instrument :  
 ECD\_Q  
 ClientSampleId :



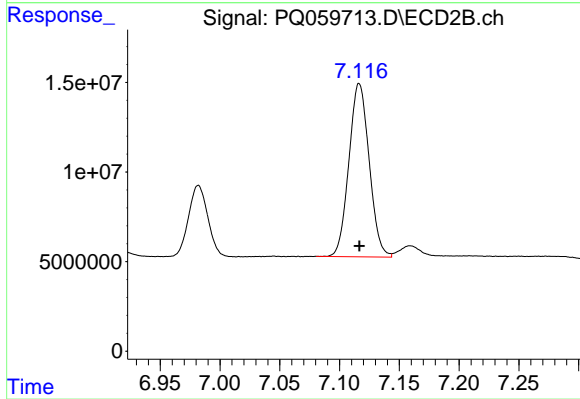
#39 AR-1262-4

R.T.: 6.622 min  
 Delta R.T.: -0.003 min  
 Response: 363034089  
 Conc: 433.43 ng/ml



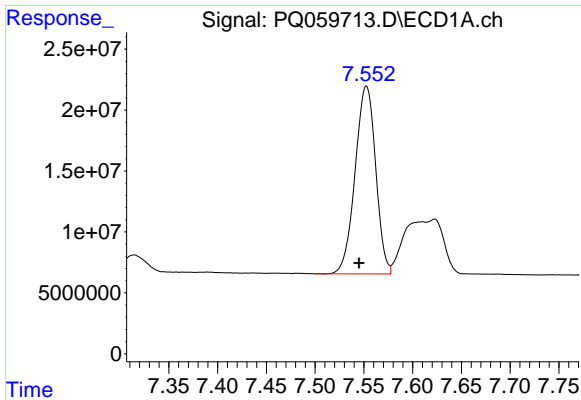
#40 AR-1262-5

R.T.: 8.125 min  
 Delta R.T.: 0.001 min  
 Response: 76116555  
 Conc: 291.78 ng/ml



#40 AR-1262-5

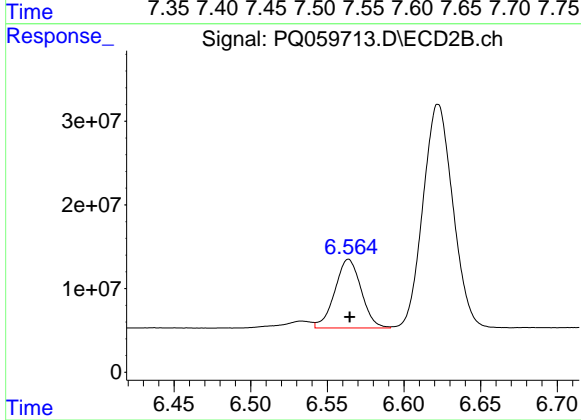
R.T.: 7.117 min  
 Delta R.T.: 0.000 min  
 Response: 114198168  
 Conc: 290.61 ng/ml



#41 AR-1268-1

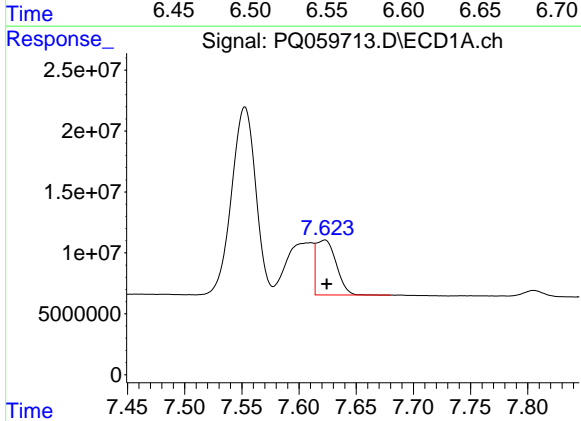
R.T.: 7.553 min  
 Delta R.T.: 0.008 min  
 Response: 226138141  
 Conc: 238.92 ng/ml

Instrument :  
 ECD\_Q  
 ClientSampleId :



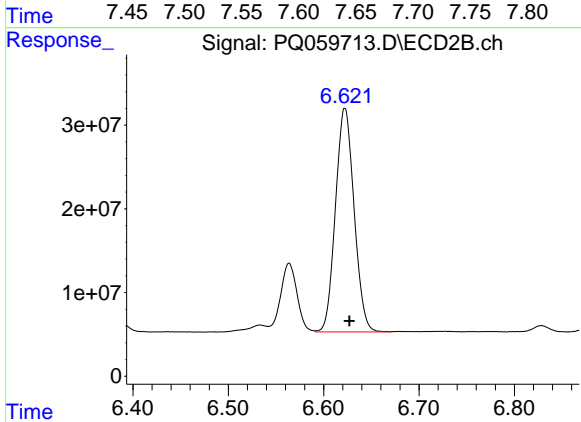
#41 AR-1268-1

R.T.: 6.564 min  
 Delta R.T.: 0.000 min  
 Response: 98429819  
 Conc: 73.86 ng/ml



#42 AR-1268-2

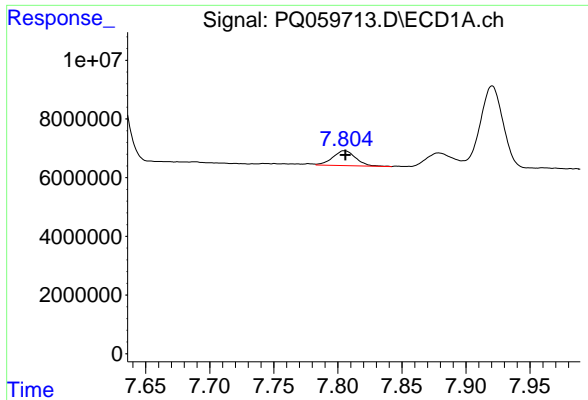
R.T.: 7.623 min  
 Delta R.T.: -0.002 min  
 Response: 55024121  
 Conc: 64.46 ng/ml



#42 AR-1268-2

R.T.: 6.622 min  
 Delta R.T.: -0.005 min  
 Response: 363034089  
 Conc: 297.48 ng/ml

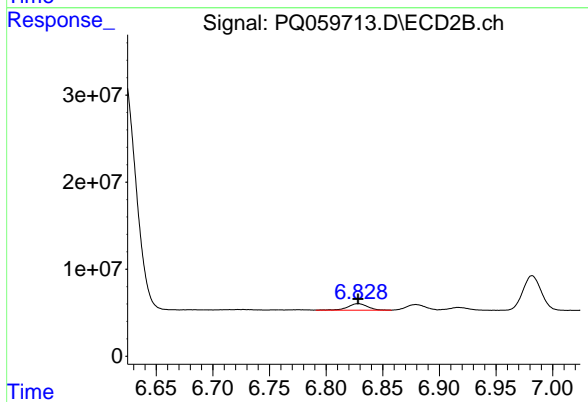




#43 AR-1268-3

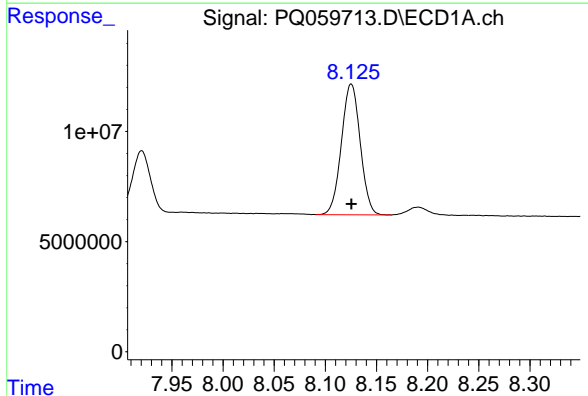
R.T.: 7.805 min  
 Delta R.T.: 0.000 min  
 Response: 6340263  
 Conc: 9.17 ng/ml

Instrument :  
 ECD\_Q  
 ClientSampleId :



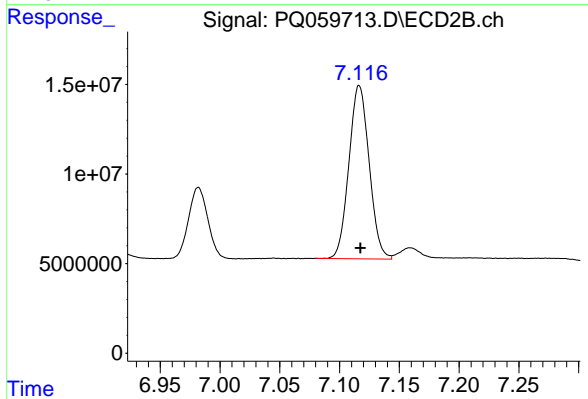
#43 AR-1268-3

R.T.: 6.828 min  
 Delta R.T.: 0.000 min  
 Response: 8966199  
 Conc: 8.53 ng/ml



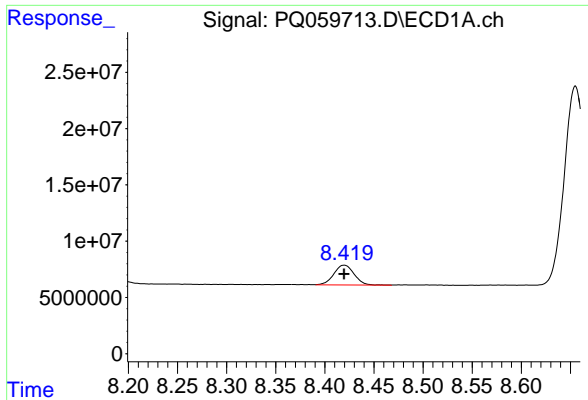
#44 AR-1268-4

R.T.: 8.125 min  
 Delta R.T.: 0.000 min  
 Response: 76116555  
 Conc: 264.33 ng/ml



#44 AR-1268-4

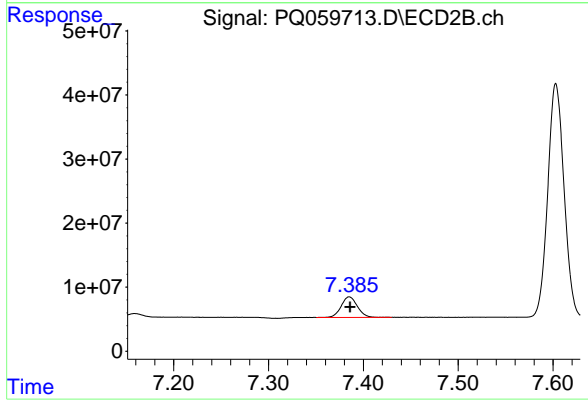
R.T.: 7.117 min  
 Delta R.T.: -0.001 min  
 Response: 114198168  
 Conc: 260.45 ng/ml



#45 AR-1268-5

R.T.: 8.420 min  
Delta R.T.: 0.000 min  
Response: 25195438  
Conc: 12.36 ng/ml

Instrument :  
ECD\_Q  
ClientSampleId :



#45 AR-1268-5

R.T.: 7.385 min  
Delta R.T.: 0.000 min  
Response: 38435405  
Conc: 11.36 ng/ml