

Data Path : Z:\pestpcbsrv\HPCHEM1\ECD_Q\Data\PQ102124\
 Data File : PQ069226.D
 Signal(s) : Signal #1: ECD1A.ch Signal #2: ECD2B.ch
 Acq On : 21 Oct 2024 22:48
 Operator : YP\AJ
 Sample : P4368-02
 Misc : AR1242 LOQ 50 PPB
 ALS Vial : 38 Sample Multiplier: 1

Instrument :
 ECD_Q
ClientSampleId :
 LOQ-SOIL-02-QT4-2024

Manual Integrations
APPROVED
 Reviewed By :Yogesh Patel 10/22/2024
 Supervised By :Ankita Jodhani 10/23/2024

Integration File signal 1: autoint1.e
 Integration File signal 2: autoint2.e
 Quant Time: Oct 22 01:56:40 2024
 Quant Method : Z:\pestpcbsrv\HPCHEM1\ECD_Q\Method\PQ102124.M
 Quant Title : GC EXTRACTABLES
 QLast Update : Mon Oct 21 15:35:59 2024
 Response via : Initial Calibration
 Integrator: ChemStation

Volume Inj. : 2 µl
 Signal #1 Phase : ZB-MR1 Signal #2 Phase: ZB-MR2
 Signal #1 Info : 30Mx0.32mmx 0.50µ Signal #2 Info : 30M x 0.32mm x 0.25µm

Compound	RT#1	RT#2	Resp#1	Resp#2	ng/ml	ng/ml

System Monitoring Compounds						
1) SA Tetrachlo...	3.328	2.739	196.0E6	202.9E6	21.725	22.470m
2) SA Decachlor...	8.454	7.476	130.2E6	183.7E6	20.162	22.204
Target Compounds						
16) L4 AR-1242-1	4.416	3.731	10528657	13955785	44.039m	57.089 #
17) L4 AR-1242-2	4.435	3.746	18587610	19014867	50.770m	53.182
18) L4 AR-1242-3	4.494	3.907	10068179	11870787	45.403m	56.970m#
19) L4 AR-1242-4	4.584	3.991	8761447	7970194	45.922m	45.575m
20) L4 AR-1242-5	5.293	4.485	9392312	14279556	58.990m	55.383m

(f)=RT Delta > 1/2 Window (#)=Amounts differ by > 25% (m)=manual int.

Data Path : Z:\pestpcbsrv\HPCHEM1\ECD_Q\Data\PQ102124\
 Data File : PQ069226.D
 Signal(s) : Signal #1: ECD1A.ch Signal #2: ECD2B.ch
 Acq On : 21 Oct 2024 22:48
 Operator : YP\AJ
 Sample : P4368-02
 Misc : AR1242 LOQ 50 PPB
 ALS Vial : 38 Sample Multiplier: 1

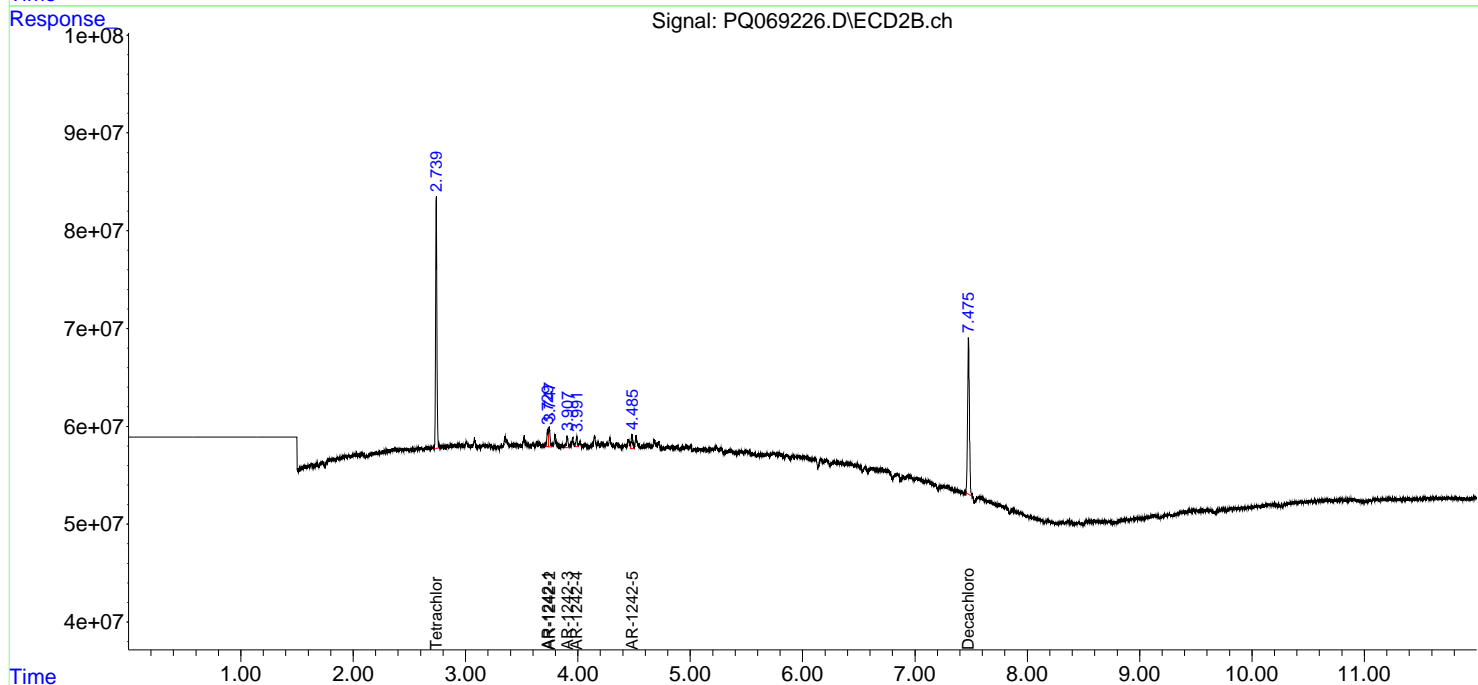
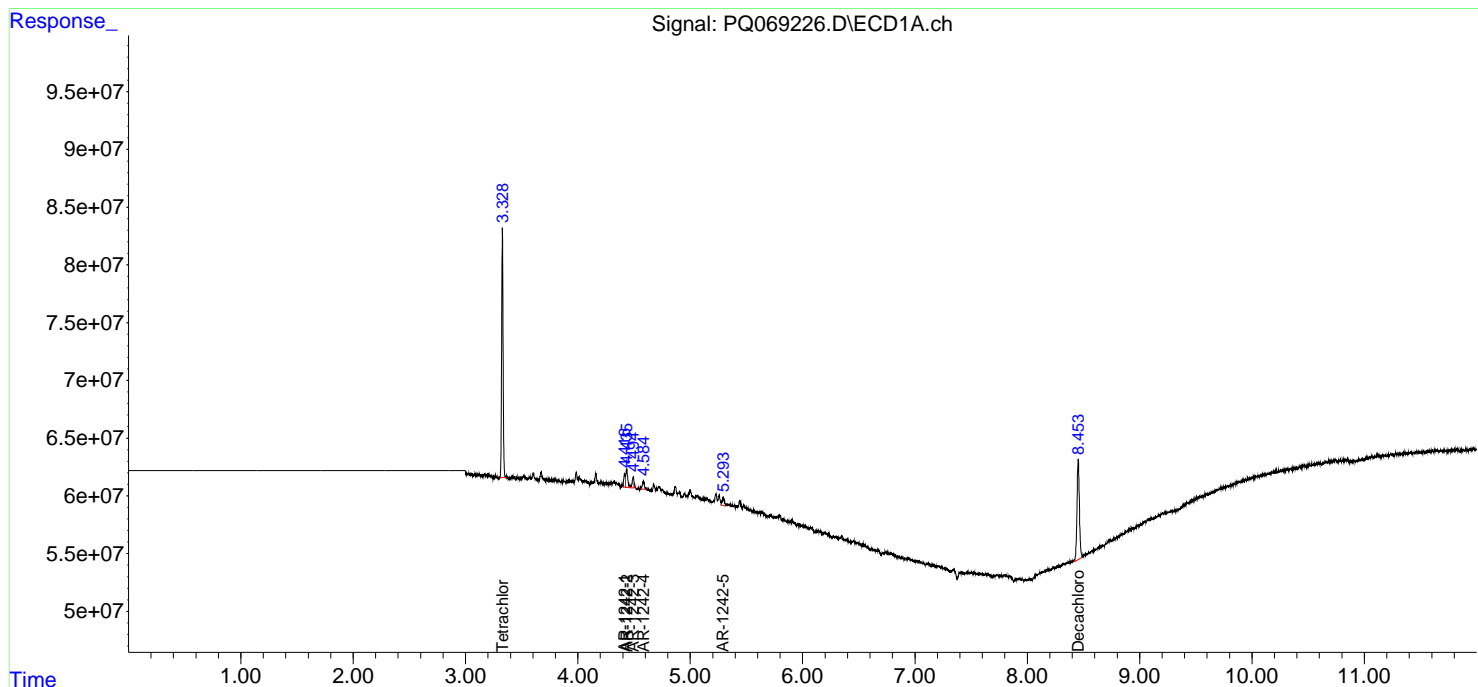
Instrument :
 ECD_Q
ClientSampleId :
 LOQ-SOIL-02-QT4-2024

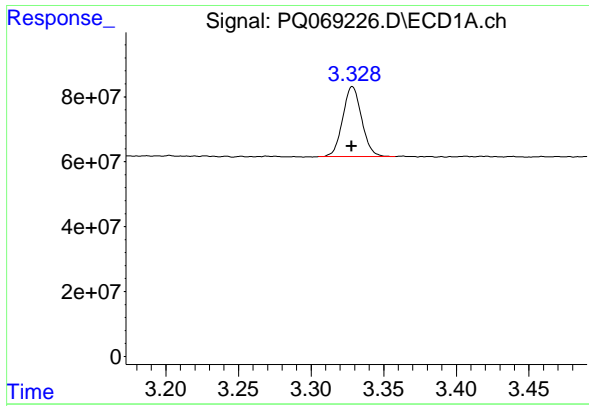
Manual Integrations
APPROVED

Reviewed By :Yogesh Patel 10/22/2024
 Supervised By :Ankita Jodhani 10/23/2024

Integration File signal 1: autoint1.e
 Integration File signal 2: autoint2.e
 Quant Time: Oct 22 01:56:40 2024
 Quant Method : Z:\pestpcbsrv\HPCHEM1\ECD_Q\Method\PQ102124.M
 Quant Title : GC EXTRACTABLES
 QLast Update : Mon Oct 21 15:35:59 2024
 Response via : Initial Calibration
 Integrator: ChemStation

Volume Inj. : 2 µl
 Signal #1 Phase : ZB-MR1 Signal #2 Phase: ZB-MR2
 Signal #1 Info : 30Mx0.32mmx 0.50µm Signal #2 Info : 30M x 0.32mm x 0.25µm





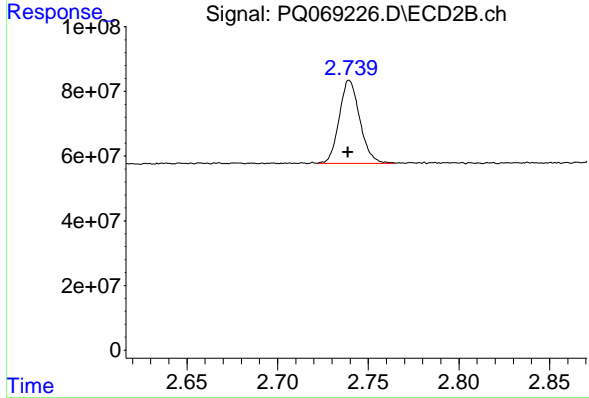
#1 Tetrachloro-m-xylene

R.T.: 3.328 min
 Delta R.T.: 0.000 min
 Response: 196020354
 Conc: 21.73 ng/ml

Instrument : ECD_Q
 Client Sample Id : LOQ-SOIL-02-QT4-2024

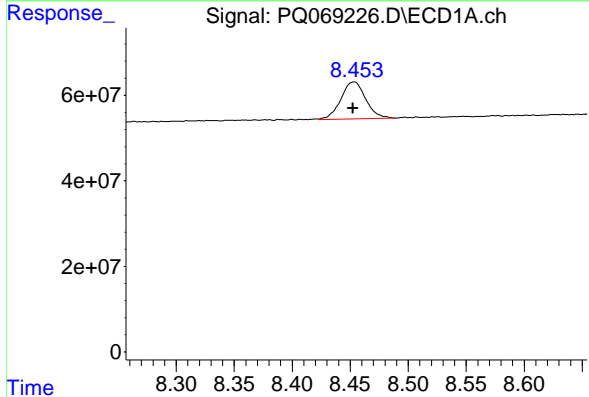
Manual Integrations
 APPROVED

Reviewed By :Yogesh Patel 10/22/2024
 Supervised By :Ankita Jodhani 10/23/2024



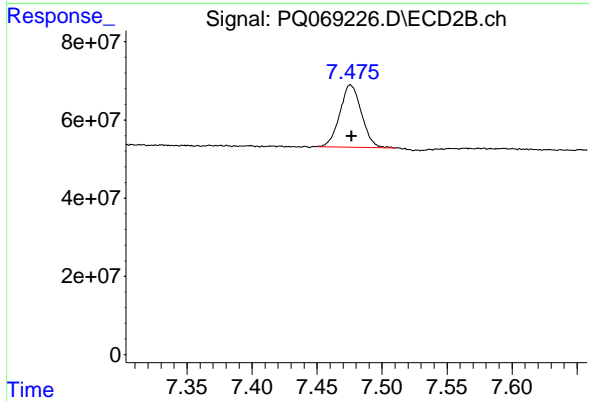
#1 Tetrachloro-m-xylene

R.T.: 2.739 min
 Delta R.T.: 0.000 min
 Response: 202853518
 Conc: 22.47 ng/ml m



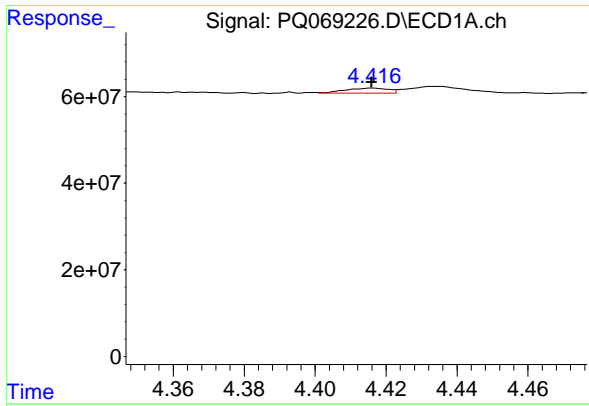
#2 Decachlorobiphenyl

R.T.: 8.454 min
 Delta R.T.: 0.001 min
 Response: 130228690
 Conc: 20.16 ng/ml



#2 Decachlorobiphenyl

R.T.: 7.476 min
 Delta R.T.: 0.000 min
 Response: 183699503
 Conc: 22.20 ng/ml



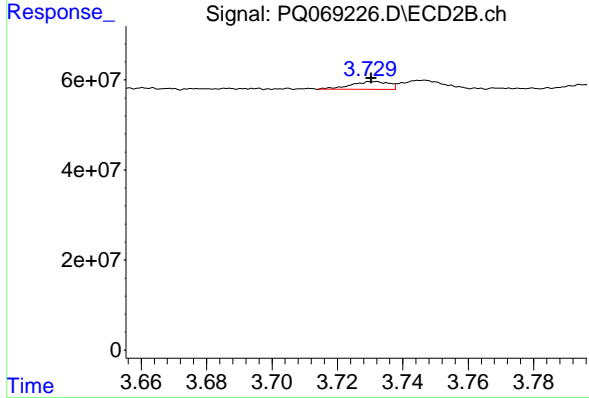
#16 AR-1242-1

R.T.: 4.416 min
 Delta R.T.: 0.000 min
 Response: 10528657
 Conc: 44.04 ng/ml

Instrument : ECD_Q
 ClientSampleId : LOQ-SOIL-02-QT4-2024

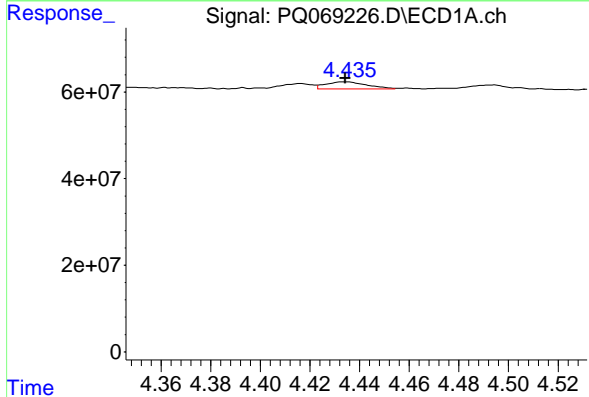
Manual Integrations
 APPROVED

Reviewed By :Yogesh Patel 10/22/2024
 Supervised By :Ankita Jodhani 10/23/2024



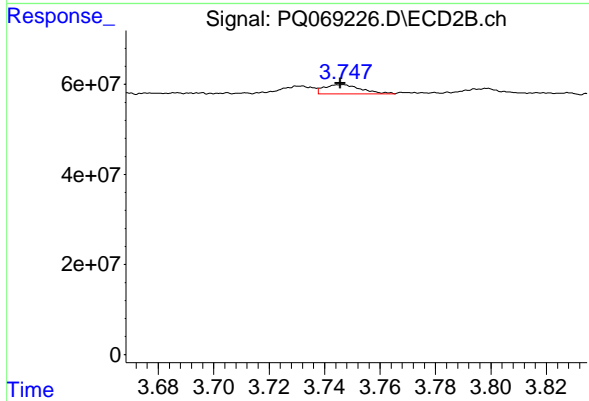
#16 AR-1242-1

R.T.: 3.731 min
 Delta R.T.: 0.000 min
 Response: 13955785
 Conc: 57.09 ng/ml



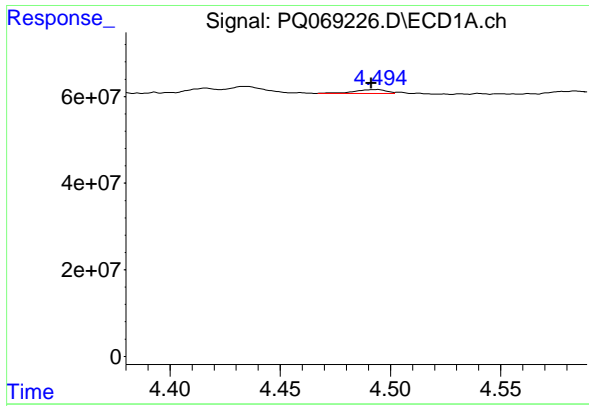
#17 AR-1242-2

R.T.: 4.435 min
 Delta R.T.: 0.000 min
 Response: 18587610
 Conc: 50.77 ng/ml m



#17 AR-1242-2

R.T.: 3.746 min
 Delta R.T.: 0.000 min
 Response: 19014867
 Conc: 53.18 ng/ml



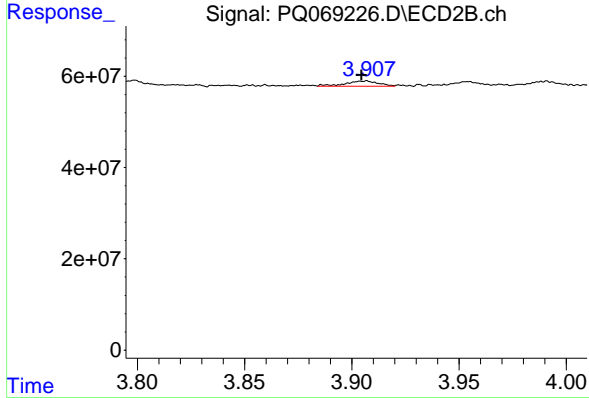
#18 AR-1242-3

R.T.: 4.494 min
 Delta R.T.: 0.003 min
 Response: 10068179
 Conc: 45.40 ng/ml

Instrument : ECD_Q
 Client Sample Id : LOQ-SOIL-02-QT4-2024

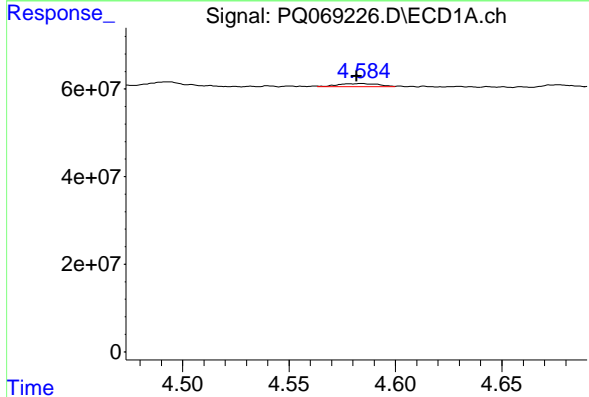
Manual Integrations
 APPROVED

Reviewed By :Yogesh Patel 10/22/2024
 Supervised By :Ankita Jodhani 10/23/2024



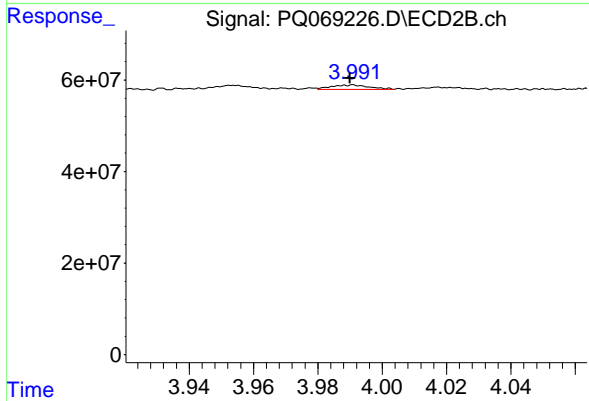
#18 AR-1242-3

R.T.: 3.907 min
 Delta R.T.: 0.002 min
 Response: 11870787
 Conc: 56.97 ng/ml m



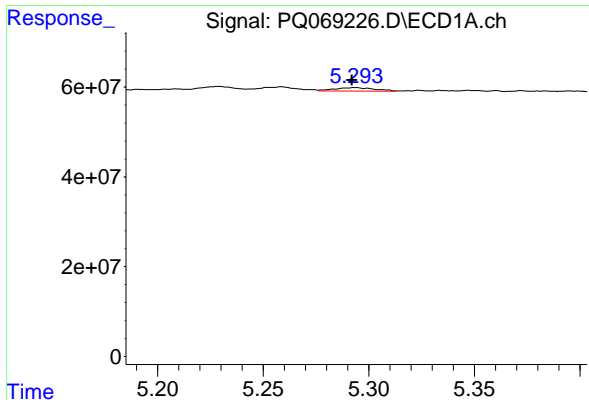
#19 AR-1242-4

R.T.: 4.584 min
 Delta R.T.: 0.002 min
 Response: 8761447
 Conc: 45.92 ng/ml m



#19 AR-1242-4

R.T.: 3.991 min
 Delta R.T.: 0.000 min
 Response: 7970194
 Conc: 45.57 ng/ml m



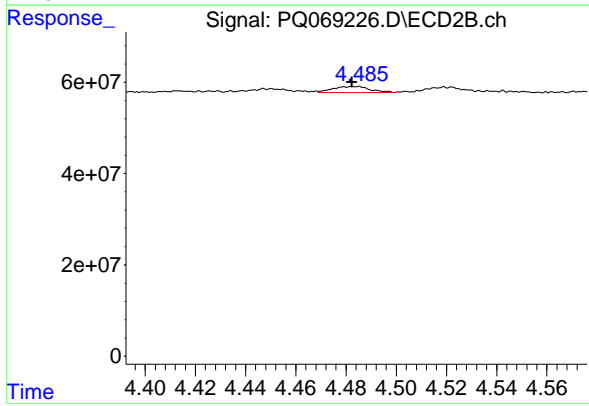
#20 AR-1242-5

R.T.: 5.293 min
Delta R.T.: 0.000 min
Response: 9392312
Conc: 58.99 ng/ml

Instrument : ECD_Q
ClientSampleId : LOQ-SOIL-02-QT4-2024

Manual Integrations
APPROVED

Reviewed By :Yogesh Patel 10/22/2024
Supervised By :Ankita Jodhani 10/23/2024



#20 AR-1242-5

R.T.: 4.485 min
Delta R.T.: 0.003 min
Response: 14279556
Conc: 55.38 ng/ml m