

Data Path : Z:\pestpcbsrv\HPCHEM1\ECD_Q\Data\PQ102124\
 Data File : PQ069250.D
 Signal(s) : Signal #1: ECD1A.ch Signal #2: ECD2B.ch
 Acq On : 22 Oct 2024 04:36
 Operator : YP\AJ
 Sample : P4368-01
 Misc : AR1262 LOD 40 PPB
 ALS Vial : 58 Sample Multiplier: 1

Instrument :
 ECD_Q
ClientSampleId :
 LOD-MDL-SOIL-01-QT4-2024

Manual Integrations
APPROVED

Reviewed By :Yogesh Patel 10/22/2024
 Supervised By :Ankita Jodhani 10/23/2024

Integration File signal 1: autoint1.e
 Integration File signal 2: autoint2.e
 Quant Time: Oct 22 06:35:14 2024
 Quant Method : Z:\pestpcbsrv\HPCHEM1\ECD_Q\Method\PQ102124.M
 Quant Title : GC EXTRACTABLES
 QLast Update : Mon Oct 21 15:35:59 2024
 Response via : Initial Calibration
 Integrator: ChemStation

Volume Inj. : 2 µl
 Signal #1 Phase : ZB-MR1 Signal #2 Phase: ZB-MR2
 Signal #1 Info : 30Mx0.32mmx 0.50µ Signal #2 Info : 30M x 0.32mm x 0.25µm

Compound	RT#1	RT#2	Resp#1	Resp#2	ng/ml	ng/ml

System Monitoring Compounds						
1) SA Tetrachlo...	3.328	2.739	155.8E6	188.3E6	17.268	20.862
2) SA Decachlor...	8.452	7.475	103.9E6	177.2E6	16.079	21.414 #
Target Compounds						
36) L8 AR-1262-1	6.790	5.676	17385490	28786124	31.454	42.846 #
37) L8 AR-1262-2	7.098	5.922	32130843	30050753	30.465	48.315 #
38) L8 AR-1262-3	7.373	6.442	22654042	24033325	33.086	44.279m#
39) L8 AR-1262-4	7.448	6.504	18574338	34970609	35.610m	37.559m
40) L8 AR-1262-5	7.951	6.995	11134595	17210863	33.270	35.986m

(f)=RT Delta > 1/2 Window (#)=Amounts differ by > 25% (m)=manual int.

Data Path : Z:\pestpcbsrv\HPCHEM1\ECD_Q\Data\PQ102124\
 Data File : PQ069250.D
 Signal(s) : Signal #1: ECD1A.ch Signal #2: ECD2B.ch
 Acq On : 22 Oct 2024 04:36
 Operator : YP\AJ
 Sample : P4368-01
 Misc : AR1262 LOD 40 PPB
 ALS Vial : 58 Sample Multiplier: 1

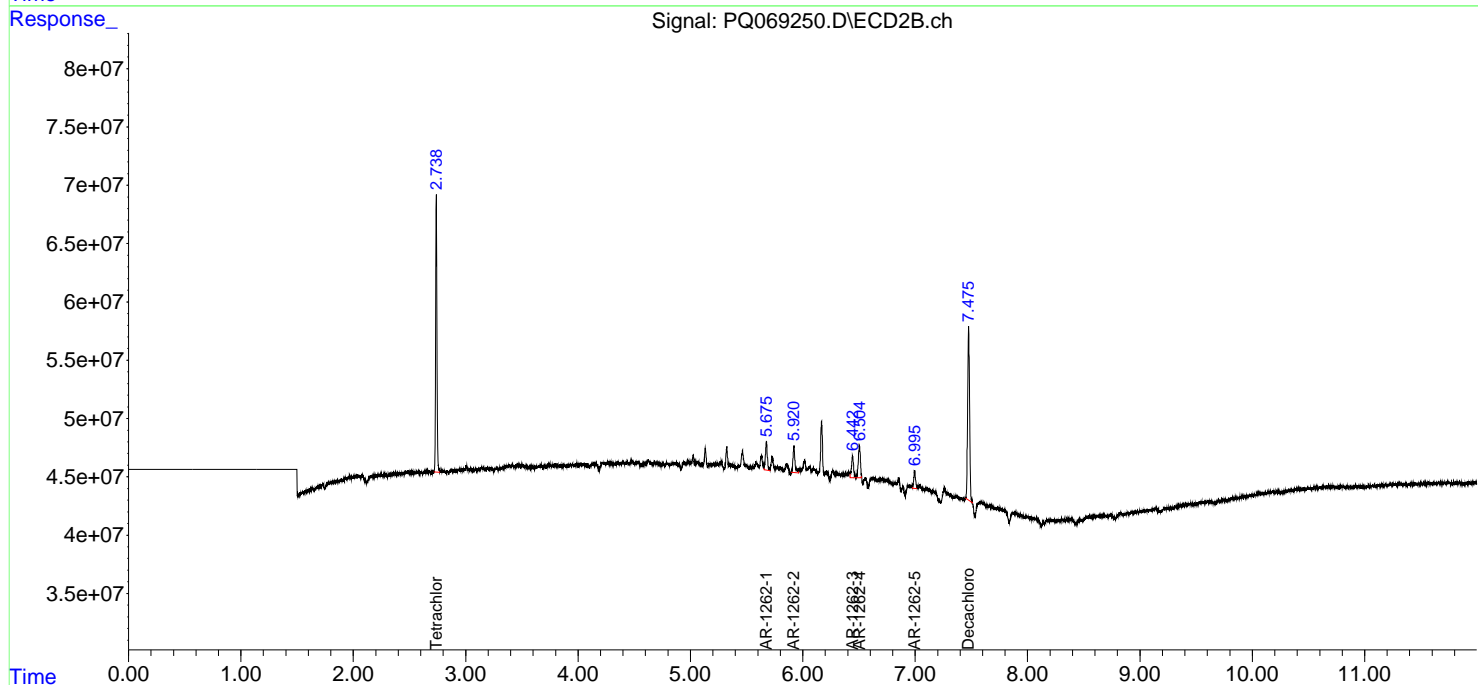
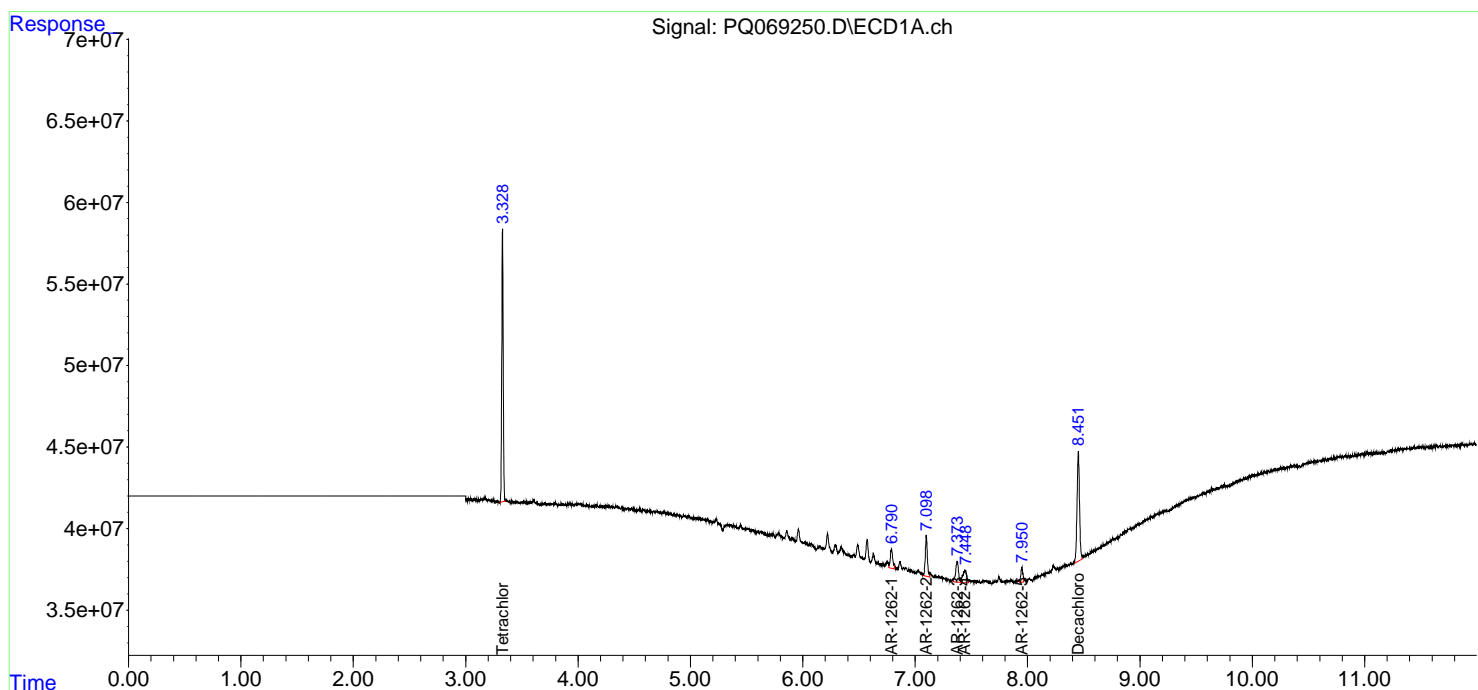
Instrument :
 ECD_Q
ClientSampleId :
 LOD-MDL-SOIL-01-QT4-2024

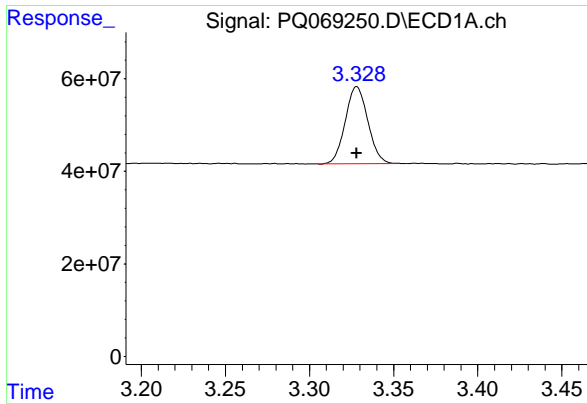
Manual Integrations
APPROVED

Reviewed By :Yogesh Patel 10/22/2024
 Supervised By :Ankita Jodhani 10/23/2024

Integration File signal 1: autoint1.e
 Integration File signal 2: autoint2.e
 Quant Time: Oct 22 06:35:14 2024
 Quant Method : Z:\pestpcbsrv\HPCHEM1\ECD_Q\Method\PQ102124.M
 Quant Title : GC EXTRACTABLES
 QLast Update : Mon Oct 21 15:35:59 2024
 Response via : Initial Calibration
 Integrator: ChemStation

Volume Inj. : 2 µl
 Signal #1 Phase : ZB-MR1 Signal #2 Phase: ZB-MR2
 Signal #1 Info : 30Mx0.32mmx 0.50µm Signal #2 Info : 30M x 0.32mm x 0.25µm





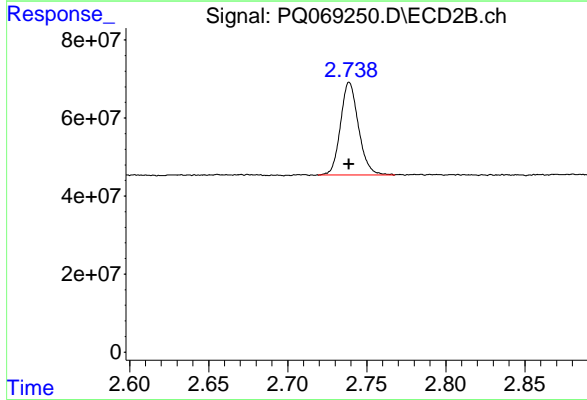
#1 Tetrachloro-m-xylene

R.T.: 3.328 min
 Delta R.T.: 0.000 min
 Response: 155802545
 Conc: 17.27 ng/ml

Instrument : ECD_Q
 Client Sample Id : LOD-MDL-SOIL-01-QT4-2024

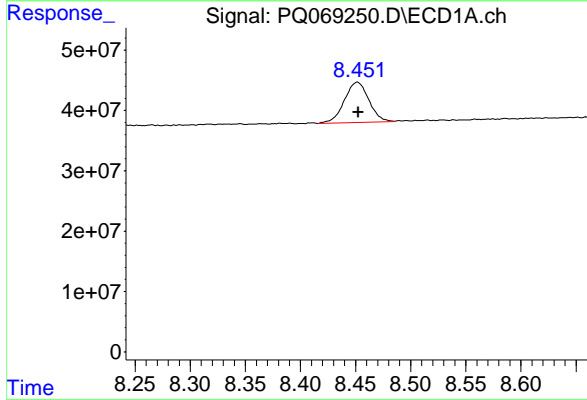
Manual Integrations
 APPROVED

Reviewed By :Yogesh Patel 10/22/2024
 Supervised By :Ankita Jodhani 10/23/2024



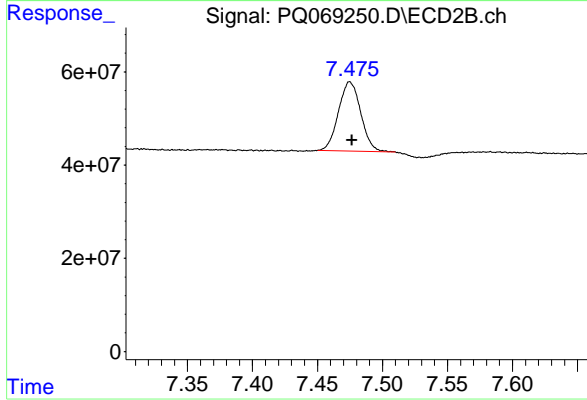
#1 Tetrachloro-m-xylene

R.T.: 2.739 min
 Delta R.T.: 0.000 min
 Response: 188340636
 Conc: 20.86 ng/ml



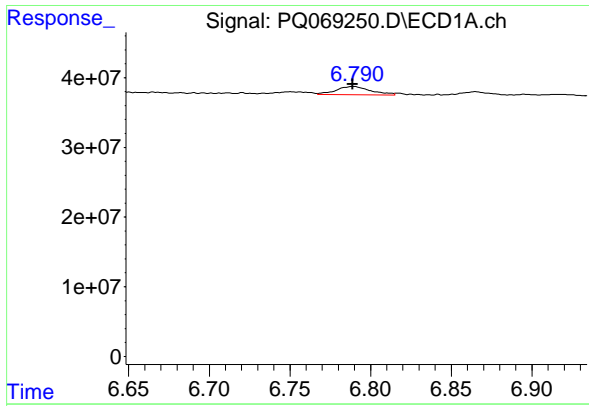
#2 Decachlorobiphenyl

R.T.: 8.452 min
 Delta R.T.: 0.000 min
 Response: 103856132
 Conc: 16.08 ng/ml



#2 Decachlorobiphenyl

R.T.: 7.475 min
 Delta R.T.: -0.002 min
 Response: 177161964
 Conc: 21.41 ng/ml



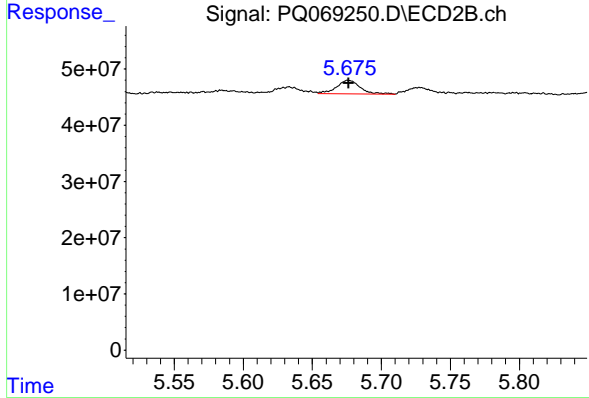
#36 AR-1262-1

R.T.: 6.790 min
 Delta R.T.: 0.000 min
 Response: 17385490
 Conc: 31.45 ng/ml

Instrument : ECD_Q
 Client Sample Id : LOD-MDL-SOIL-01-QT4-2024

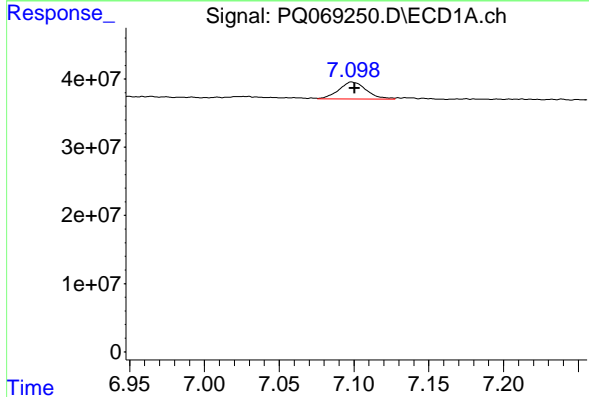
Manual Integrations
 APPROVED

Reviewed By :Yogesh Patel 10/22/2024
 Supervised By :Ankita Jodhani 10/23/2024



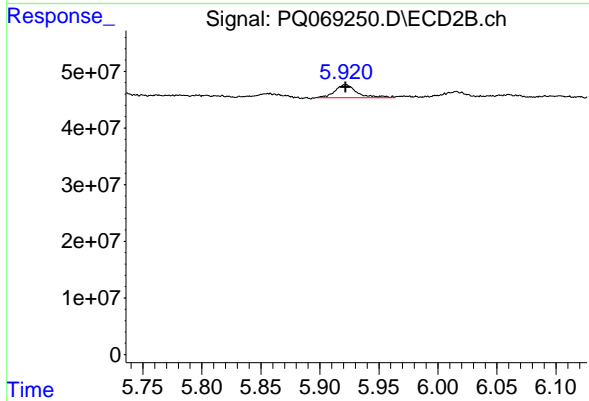
#36 AR-1262-1

R.T.: 5.676 min
 Delta R.T.: 0.000 min
 Response: 28786124
 Conc: 42.85 ng/ml



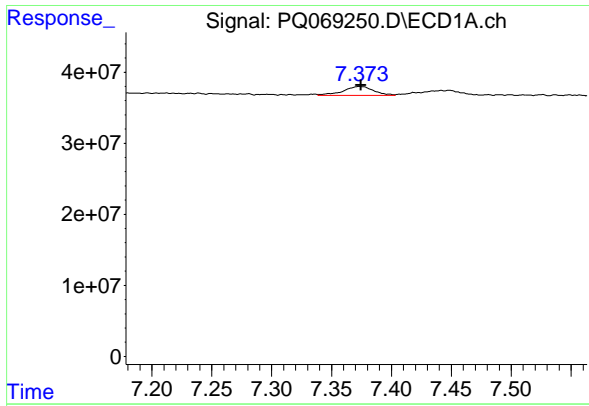
#37 AR-1262-2

R.T.: 7.098 min
 Delta R.T.: -0.002 min
 Response: 32130843
 Conc: 30.46 ng/ml



#37 AR-1262-2

R.T.: 5.922 min
 Delta R.T.: 0.000 min
 Response: 30050753
 Conc: 48.32 ng/ml



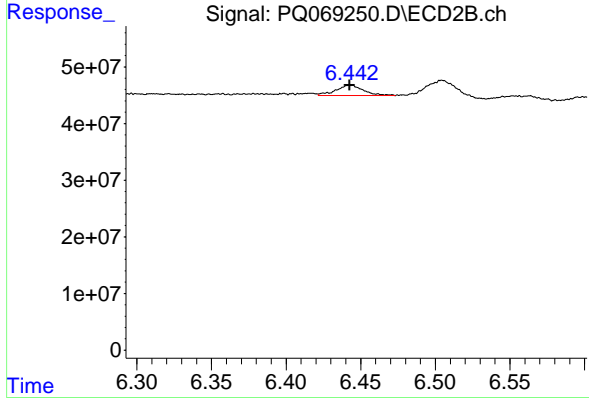
#38 AR-1262-3

R.T.: 7.373 min
 Delta R.T.: -0.001 min
 Response: 22654042
 Conc: 33.09 ng/ml

Instrument : ECD_Q
 Client Sample Id : LOD-MDL-SOIL-01-QT4-2024

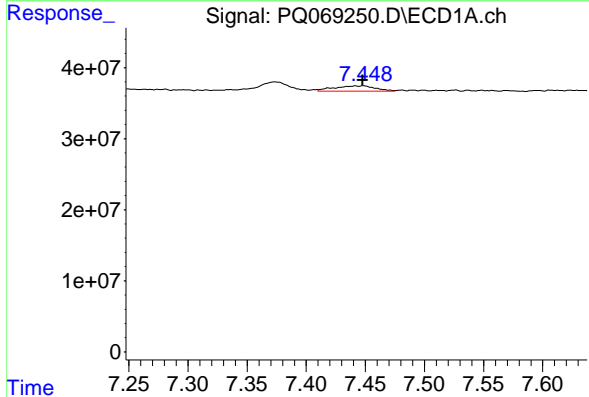
Manual Integrations
 APPROVED

Reviewed By :Yogesh Patel 10/22/2024
 Supervised By :Ankita Jodhani 10/23/2024



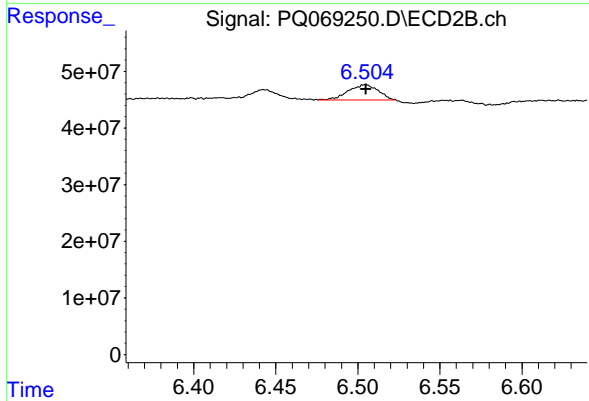
#38 AR-1262-3

R.T.: 6.442 min
 Delta R.T.: 0.000 min
 Response: 24033325
 Conc: 44.28 ng/ml m



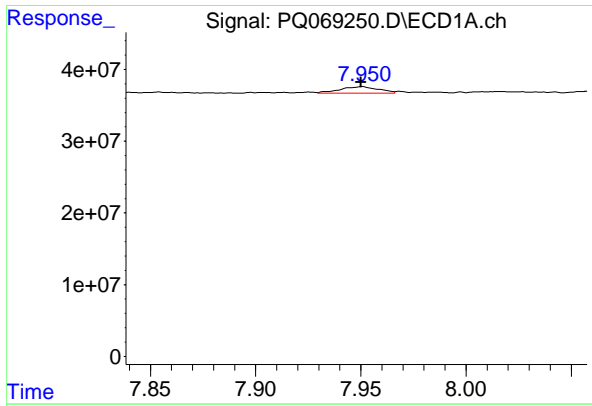
#39 AR-1262-4

R.T.: 7.448 min
 Delta R.T.: 0.000 min
 Response: 18574338
 Conc: 35.61 ng/ml m



#39 AR-1262-4

R.T.: 6.504 min
 Delta R.T.: 0.000 min
 Response: 34970609
 Conc: 37.56 ng/ml m



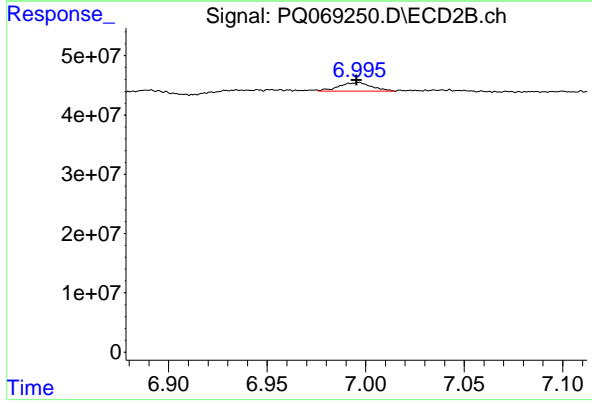
#40 AR-1262-5

R.T.: 7.951 min
 Delta R.T.: 0.000 min
 Response: 11134595
 Conc: 33.27 ng/ml

Instrument :
 ECD_Q
 ClientSampleId :
 LOD-MDL-SOIL-01-QT4-2024

Manual Integrations
 APPROVED

Reviewed By :Yogesh Patel 10/22/2024
 Supervised By :Ankita Jodhani 10/23/2024



#40 AR-1262-5

R.T.: 6.995 min
 Delta R.T.: 0.000 min
 Response: 17210863
 Conc: 35.99 ng/ml m