

Data Path : Z:\pestpcbsrv\HPCHEM1\ECD_Q\Data\PQ102222\
 Data File : PQ059740.D
 Signal(s) : Signal #1: ECD1A.ch Signal #2: ECD2B.ch
 Acq On : 21 Oct 2022 15:09
 Operator : YP\AJ
 Sample : N4955-01
 Misc : AR1221 LOD 40 PPB
 ALS Vial : 23 Sample Multiplier: 1

Instrument :
 ECD_Q
 ClientSampleId :

Integration File signal 1: autoint1.e
 Integration File signal 2: autoint2.e
 Quant Time: Oct 22 04:12:14 2022
 Quant Method : Z:\pestpcbsrv\HPCHEM1\ECD_Q\Method\PQ102122.M
 Quant Title : GC EXTRACTABLES
 QLast Update : Fri Oct 21 08:02:10 2022
 Response via : Initial Calibration
 Integrator: ChemStation

Volume Inj. : 2 µl
 Signal #1 Phase : ZB-MR1 Signal #2 Phase: ZB-MR2
 Signal #1 Info : 30Mx0.32mmx 0.50µ Signal #2 Info : 30M x 0.32mm x 0.25µm

Compound	RT#1	RT#2	Resp#1	Resp#2	ng/ml	ng/ml
System Monitoring Compounds						
1) SA Tetrachlo...	3.483	2.828	213.8E6	154.1E6	18.907	19.326
2) SA Decachlor...	8.653	7.602	112.7E6	167.8E6	20.620	19.972
Target Compounds						
3) L1 AR-1016-1	4.585	3.836	495382	1076790	1.178	3.773 #
4) L1 AR-1016-2	4.602	3.851	2257810	1594117	3.669	3.756
5) L1 AR-1016-3	4.666	4.011	1733087	452064	4.647	2.052 #
6) L1 AR-1016-4	4.752	4.059	384713	615736	1.256	3.601 #
7) L1 AR-1016-5	5.045	4.257	2451115	540794	7.920	2.409 #
8) L2 AR-1221-1	3.683	3.030	6712139	4105455	48.050	41.913
9) L2 AR-1221-2	3.761	3.105	6192294	4355593	59.309	59.537
10) L2 AR-1221-3	3.831	3.176	12416067	7516557	39.924	33.396
11) L3 AR-1232-1	3.831	3.176	12416067	7516557	50.847	42.945
12) L3 AR-1232-2	4.324	3.851	1245501	1594117	8.162	8.271
13) L3 AR-1232-3	4.602	4.011	2257810	452064	8.162	4.552 #
14) L3 AR-1232-4	4.752	4.087	384713	1160732	2.700	14.009 #
15) L3 AR-1232-5	4.851	4.257	427562	540794	4.608	5.408
16) L4 AR-1242-1	4.581	3.836	1174245	1076790	3.811	5.002 #
17) L4 AR-1242-2	4.602	3.851	2257810	1594117	5.042	5.033
18) L4 AR-1242-3	4.666	4.011	1733087	452064	6.272	2.725 #
19) L4 AR-1242-4	4.752	4.087	384713	1160732	1.680	7.651 #
20) L4 AR-1242-5	5.466	4.596	358755	594481	1.468	2.787 #
21) L5 AR-1248-1	4.581	3.836	1174245	1076790	4.864	6.438 #
22) L5 AR-1248-2	4.851	4.059	427562	615736	1.490	2.745 #
23) L5 AR-1248-3	5.045	4.087	2451115	1160732	6.483	5.329
24) L5 AR-1248-4	5.428	4.257	1197325	540794	2.861	1.929 #
25) L5 AR-1248-5	5.466	4.619	358755	3632602	0.878	13.334 #
26) L6 AR-1254-1	5.407	4.596	1835550	594481	4.105	1.340 #
27) L6 AR-1254-2	5.616	4.728	820549	671371	1.192	1.719 #
28) L6 AR-1254-3	5.973	5.116	730591	1034818	1.018	1.720 #
29) L6 AR-1254-4	6.240f	5.347	762205	1363576	1.504	3.352 #
30) L6 AR-1254-5	6.668	5.750	389267	763239	0.735	1.235 #
31) L7 AR-1260-1	6.134	5.274f	695155	3002279	1.226	6.615 #
32) L7 AR-1260-2	6.389	5.458f	1678540	2170542	2.649	3.898 #
33) L7 AR-1260-3	6.745	5.574	379927	1958305	1.028	3.686 #
34) L7 AR-1260-4	6.967	6.048	395726	612666	0.952	1.551 #
35) L7 AR-1260-5	7.270	6.299	185778	2530802	0.250	2.584 #
36) L8 AR-1262-1	6.745	5.787	379927	1207809	0.656	2.018 #
37) L8 AR-1262-2	7.270	6.299	185778	2530802	0.209	2.258 #
38) L8 AR-1262-3	7.550	6.537f	83588	12017145	0.151	27.152 #
39) L8 AR-1262-4	7.649f	0.000	125592	0	0.487	N.D. #
40) L8 AR-1262-5	0.000	7.132f	0	846693	N.D.	2.155 #
41) L9 AR-1268-1	7.550	6.537f	83588	12017145	0.088	9.017 #

Data Path : Z:\pestpcbsrv\HPCHEM1\ECD_Q\Data\PQ102222\
 Data File : PQ059740.D
 Signal(s) : Signal #1: ECD1A.ch Signal #2: ECD2B.ch
 Acq On : 21 Oct 2022 15:09
 Operator : YP\AJ
 Sample : N4955-01
 Misc : AR1221 LOD 40 PPB
 ALS Vial : 23 Sample Multiplier: 1

Instrument :
 ECD_Q
 ClientSampleId :

Integration File signal 1: autoint1.e
 Integration File signal 2: autoint2.e
 Quant Time: Oct 22 04:12:14 2022
 Quant Method : Z:\pestpcbsrv\HPCHEM1\ECD_Q\Method\PQ102122.M
 Quant Title : GC EXTRACTABLES
 QLast Update : Fri Oct 21 08:02:10 2022
 Response via : Initial Calibration
 Integrator: ChemStation

Volume Inj. : 2 µl
 Signal #1 Phase : ZB-MR1 Signal #2 Phase: ZB-MR2
 Signal #1 Info : 30Mx0.32mmx 0.50µ Signal #2 Info : 30M x 0.32mm x 0.25µm

	Compound	RT#1	RT#2	Resp#1	Resp#2	ng/ml	ng/ml
42)	L9 AR-1268-2	7.649f	0.000	125592	0	0.147	N.D. #
43)	L9 AR-1268-3	7.779f	6.829	2098491	1365672	3.034	1.300 #
44)	L9 AR-1268-4	0.000	7.132	0	846693	N.D.	1.931 #
45)	L9 AR-1268-5	8.416	7.385	1256377	1932352	0.616	0.571

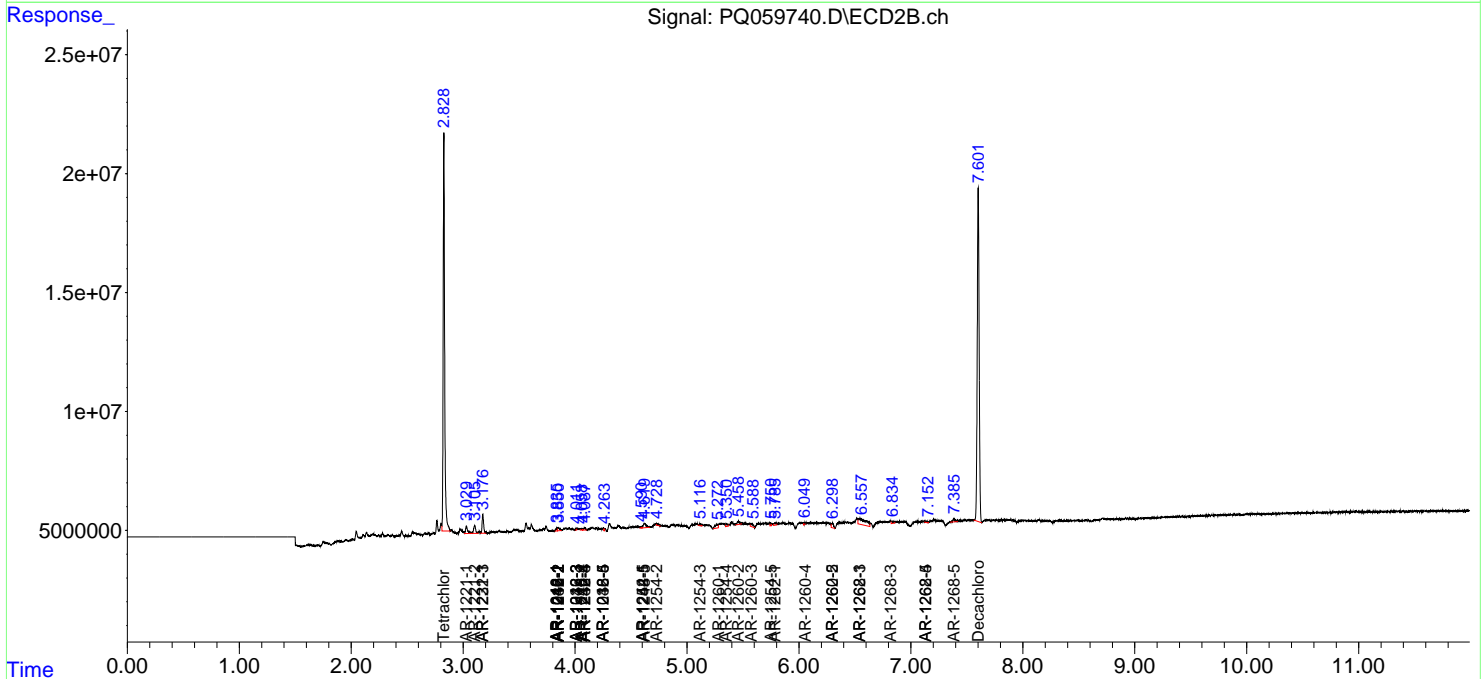
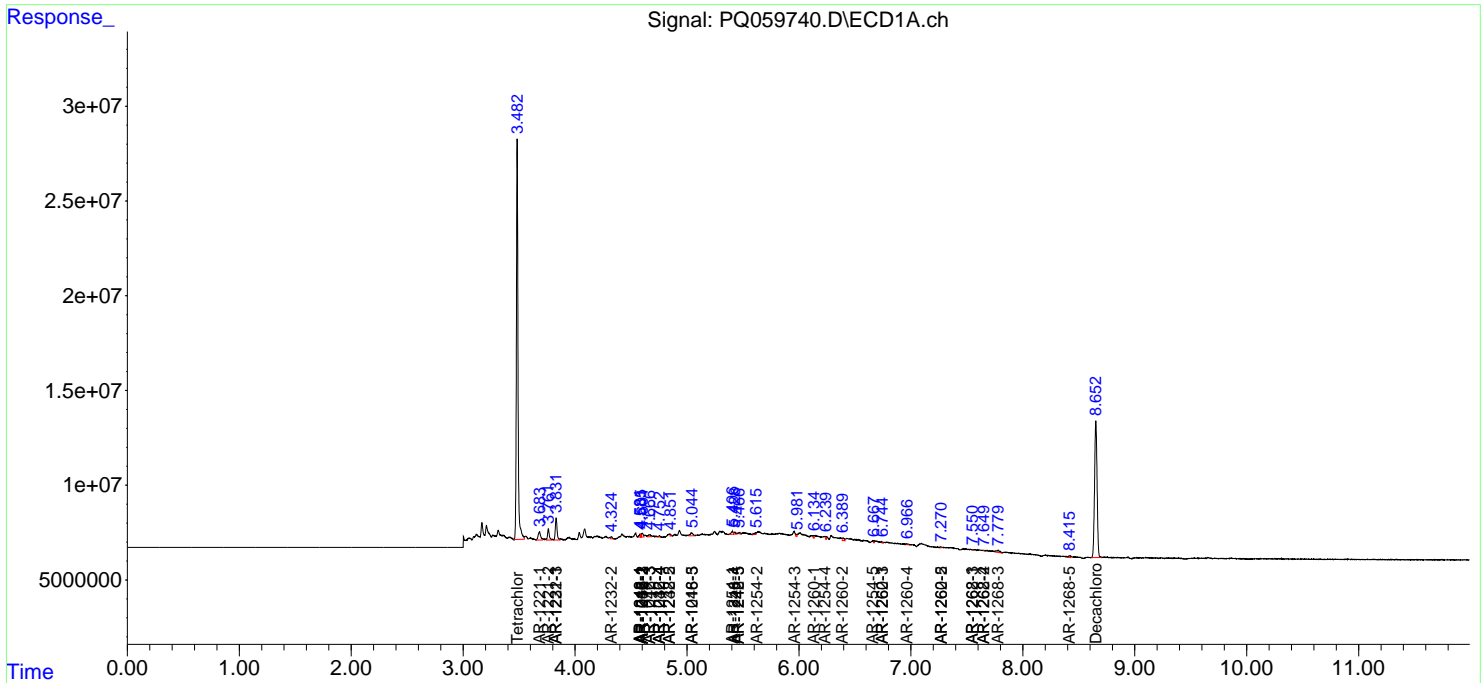
(f)=RT Delta > 1/2 Window (#)=Amounts differ by > 25% (m)=manual int.

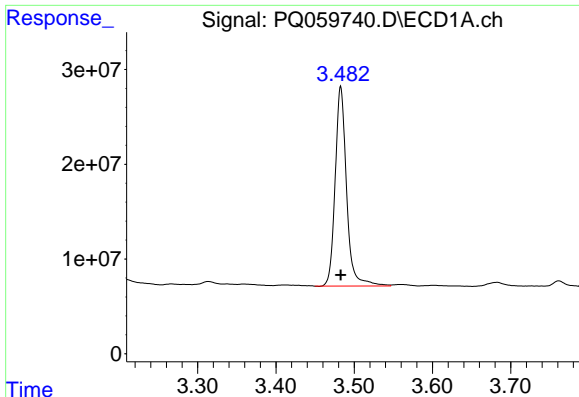
Data Path : Z:\pestpcbsrv\HPCHEM1\ECD_Q\Data\PQ102222\
 Data File : PQ059740.D
 Signal(s) : Signal #1: ECD1A.ch Signal #2: ECD2B.ch
 Acq On : 21 Oct 2022 15:09
 Operator : YP\AJ
 Sample : N4955-01
 Misc : AR1221 LOD 40 PPB
 ALS Vial : 23 Sample Multiplier: 1

Instrument :
 ECD_Q
 ClientSampleId :

Integration File signal 1: autoint1.e
 Integration File signal 2: autoint2.e
 Quant Time: Oct 22 04:12:14 2022
 Quant Method : Z:\pestpcbsrv\HPCHEM1\ECD_Q\Method\PQ102122.M
 Quant Title : GC EXTRACTABLES
 QLast Update : Fri Oct 21 08:02:10 2022
 Response via : Initial Calibration
 Integrator: ChemStation

Volume Inj. : 2 µl
 Signal #1 Phase : ZB-MR1 Signal #2 Phase: ZB-MR2
 Signal #1 Info : 30Mx0.32mmx 0.50µ Signal #2 Info : 30M x 0.32mm x 0.25µm

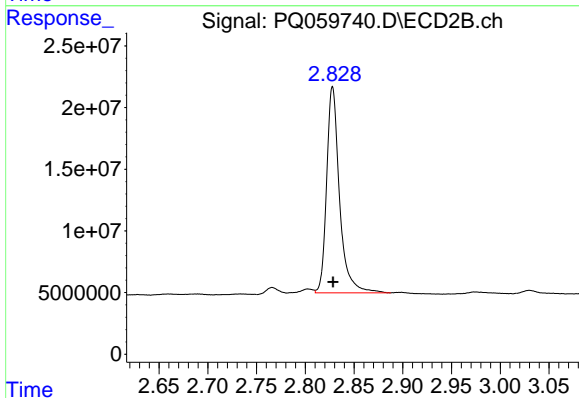




#1 Tetrachloro-m-xylene

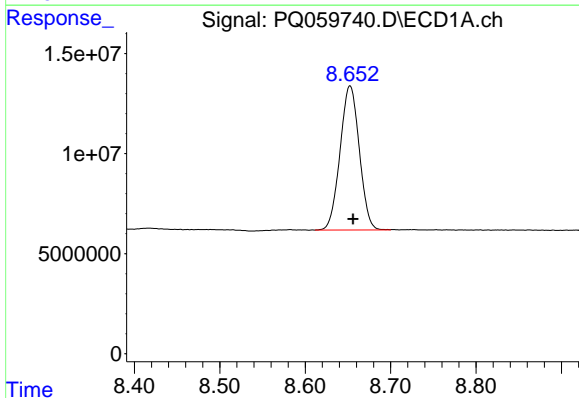
R.T.: 3.483 min
 Delta R.T.: 0.000 min
 Response: 213807506
 Conc: 18.91 ng/ml

Instrument :
 ECD_Q
 ClientSampleId :



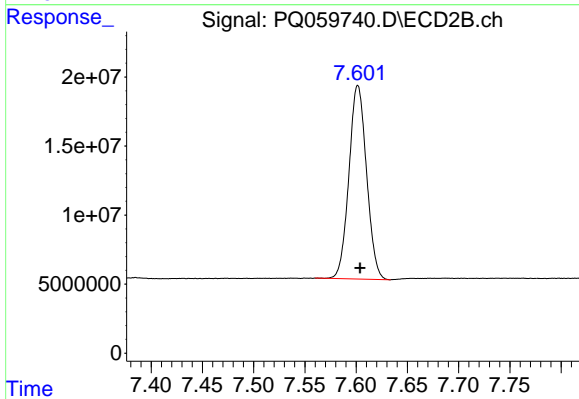
#1 Tetrachloro-m-xylene

R.T.: 2.828 min
 Delta R.T.: 0.000 min
 Response: 154059906
 Conc: 19.33 ng/ml



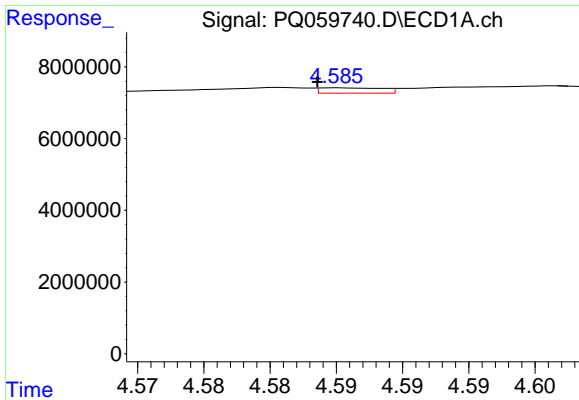
#2 Decachlorobiphenyl

R.T.: 8.653 min
 Delta R.T.: -0.004 min
 Response: 112741039
 Conc: 20.62 ng/ml



#2 Decachlorobiphenyl

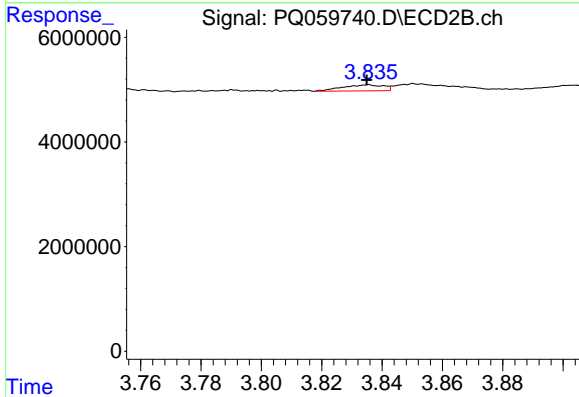
R.T.: 7.602 min
 Delta R.T.: -0.002 min
 Response: 167800436
 Conc: 19.97 ng/ml



#3 AR-1016-1

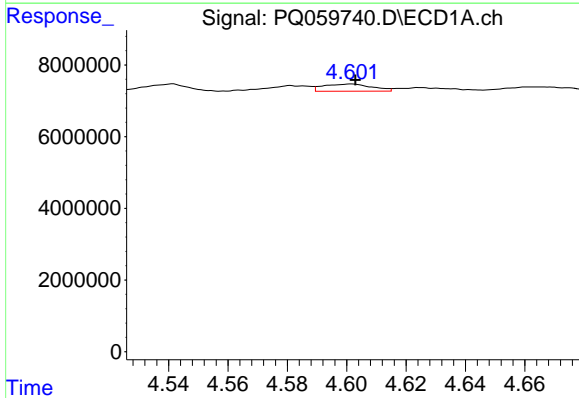
R.T.: 4.585 min
 Delta R.T.: 0.001 min
 Response: 495382
 Conc: 1.18 ng/ml

Instrument :
 ECD_Q
 ClientSampleId :



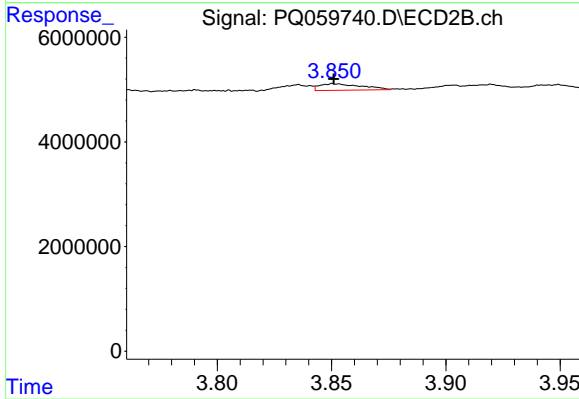
#3 AR-1016-1

R.T.: 3.836 min
 Delta R.T.: 0.000 min
 Response: 1076790
 Conc: 3.77 ng/ml



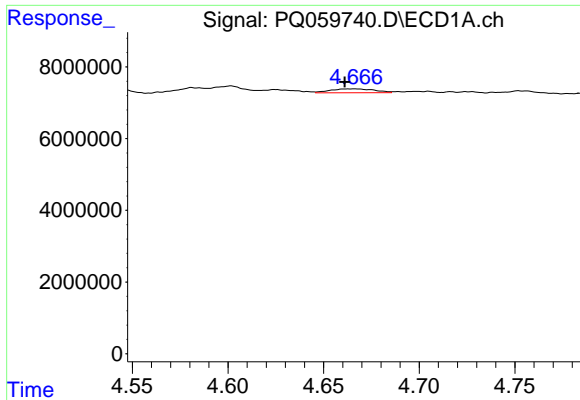
#4 AR-1016-2

R.T.: 4.602 min
 Delta R.T.: -0.001 min
 Response: 2257810
 Conc: 3.67 ng/ml



#4 AR-1016-2

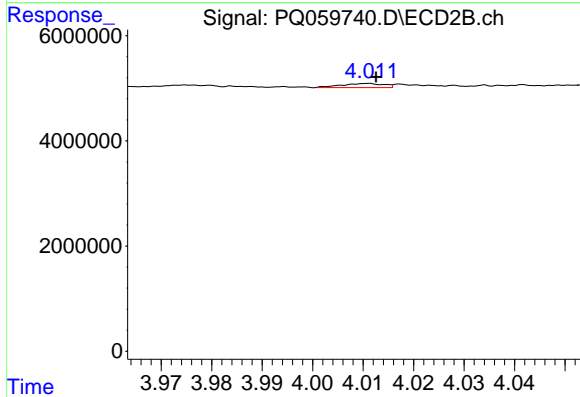
R.T.: 3.851 min
 Delta R.T.: 0.000 min
 Response: 1594117
 Conc: 3.76 ng/ml



#5 AR-1016-3

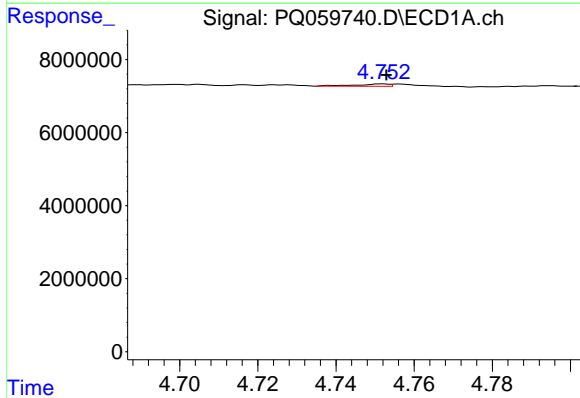
R.T.: 4.666 min
 Delta R.T.: 0.005 min
 Response: 1733087
 Conc: 4.65 ng/ml

Instrument :
 ECD_Q
 ClientSampleId :



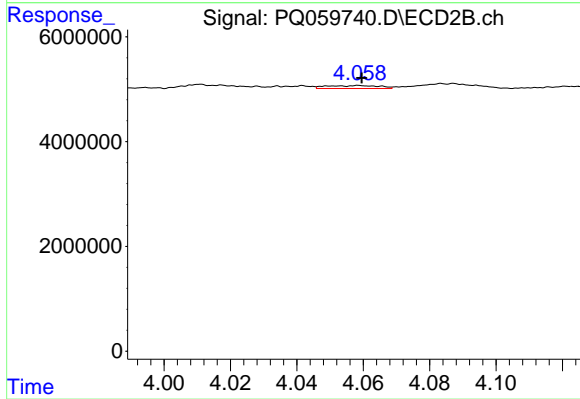
#5 AR-1016-3

R.T.: 4.011 min
 Delta R.T.: -0.002 min
 Response: 452064
 Conc: 2.05 ng/ml



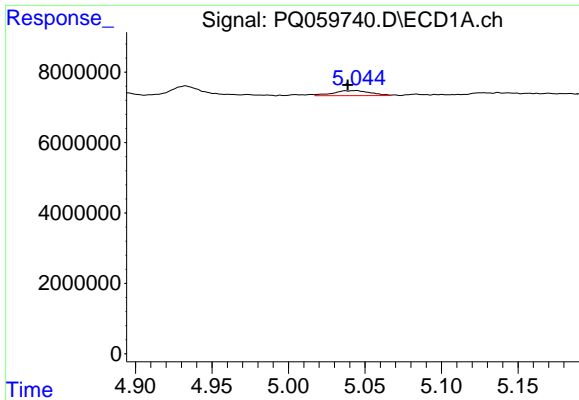
#6 AR-1016-4

R.T.: 4.752 min
 Delta R.T.: 0.000 min
 Response: 384713
 Conc: 1.26 ng/ml



#6 AR-1016-4

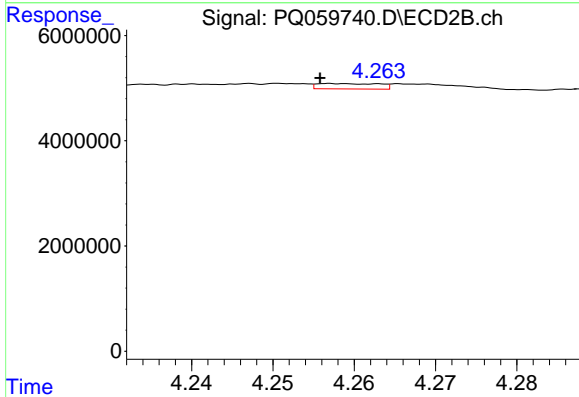
R.T.: 4.059 min
 Delta R.T.: 0.000 min
 Response: 615736
 Conc: 3.60 ng/ml



#7 AR-1016-5

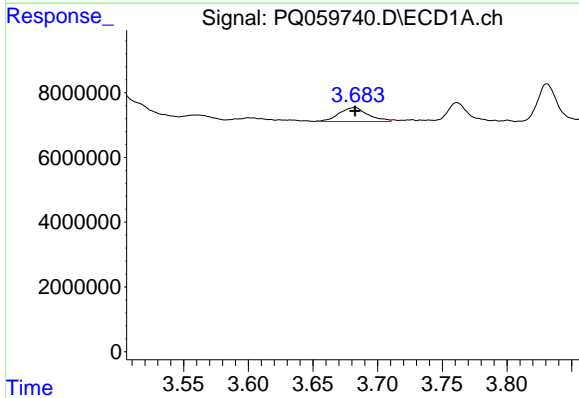
R.T.: 5.045 min
 Delta R.T.: 0.006 min
 Response: 2451115
 Conc: 7.92 ng/ml

Instrument :
 ECD_Q
 ClientSampleId :



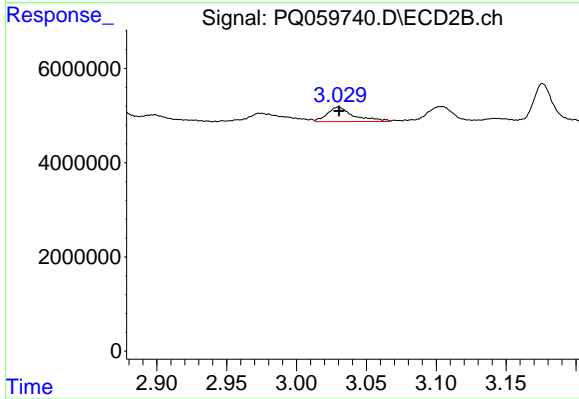
#7 AR-1016-5

R.T.: 4.257 min
 Delta R.T.: 0.001 min
 Response: 540794
 Conc: 2.41 ng/ml



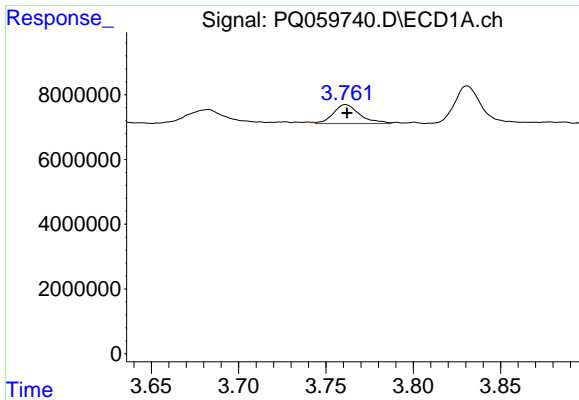
#8 AR-1221-1

R.T.: 3.683 min
 Delta R.T.: 0.000 min
 Response: 6712139
 Conc: 48.05 ng/ml



#8 AR-1221-1

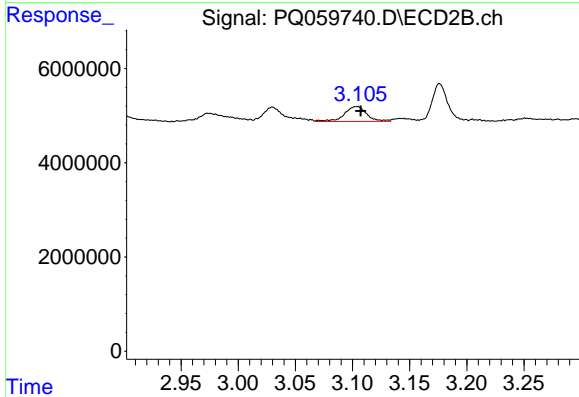
R.T.: 3.030 min
 Delta R.T.: 0.000 min
 Response: 4105455
 Conc: 41.91 ng/ml



#9 AR-1221-2

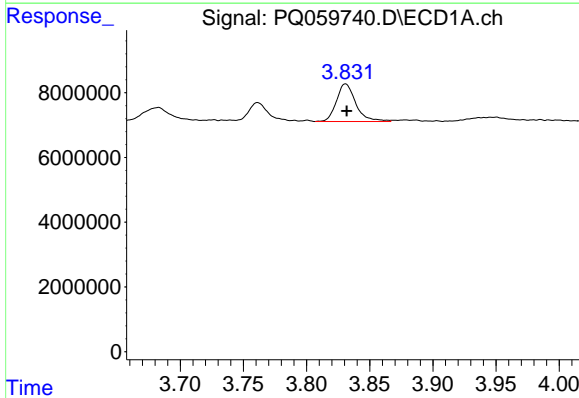
R.T.: 3.761 min
 Delta R.T.: 0.000 min
 Response: 6192294
 Conc: 59.31 ng/ml

Instrument :
 ECD_Q
 ClientSampleId :



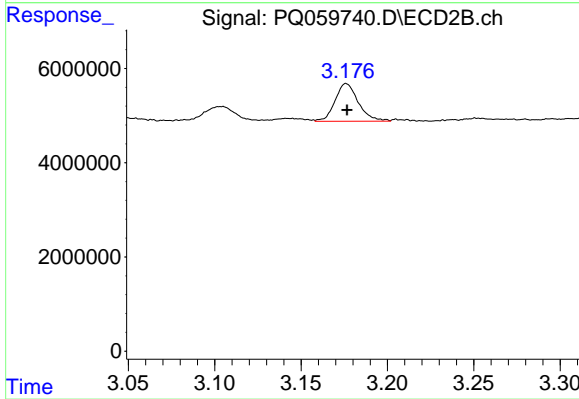
#9 AR-1221-2

R.T.: 3.105 min
 Delta R.T.: -0.003 min
 Response: 4355593
 Conc: 59.54 ng/ml



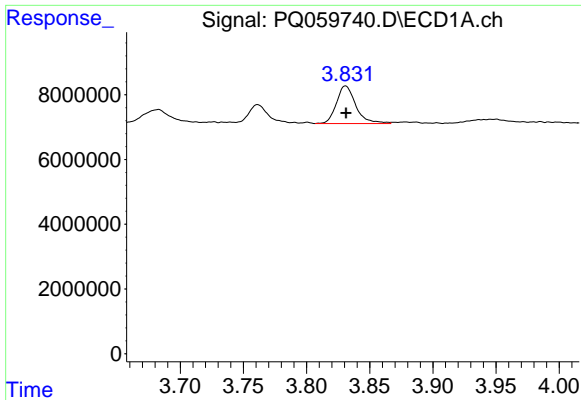
#10 AR-1221-3

R.T.: 3.831 min
 Delta R.T.: 0.000 min
 Response: 12416067
 Conc: 39.92 ng/ml



#10 AR-1221-3

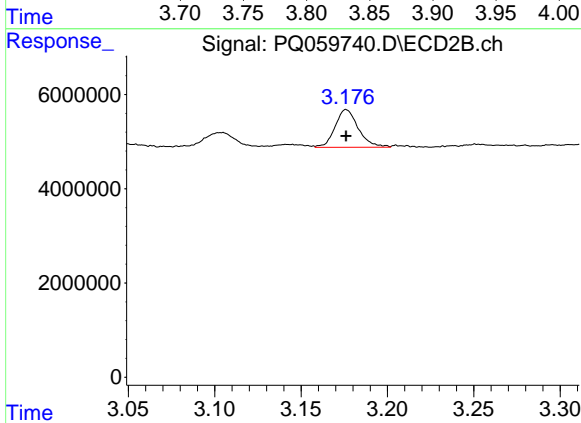
R.T.: 3.176 min
 Delta R.T.: 0.000 min
 Response: 7516557
 Conc: 33.40 ng/ml



#11 AR-1232-1

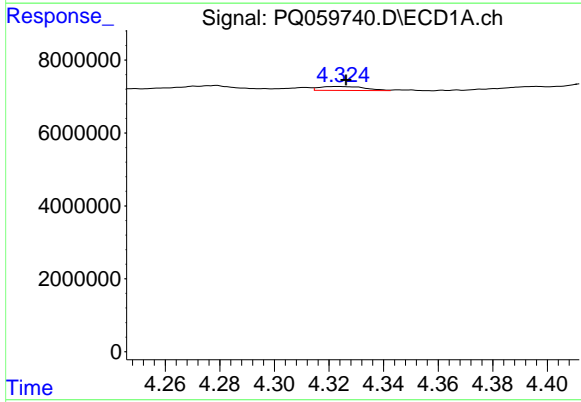
R.T.: 3.831 min
 Delta R.T.: 0.000 min
 Response: 12416067
 Conc: 50.85 ng/ml

Instrument :
 ECD_Q
 ClientSampleId :



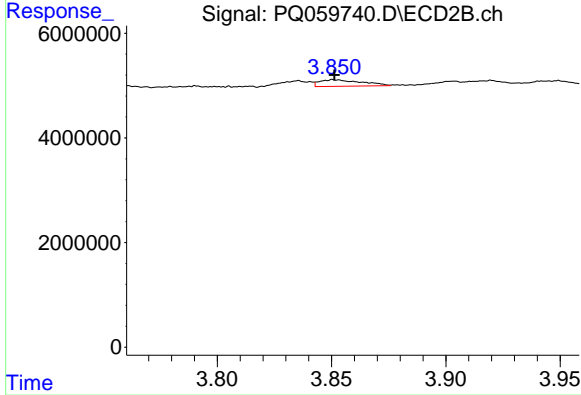
#11 AR-1232-1

R.T.: 3.176 min
 Delta R.T.: 0.000 min
 Response: 7516557
 Conc: 42.95 ng/ml



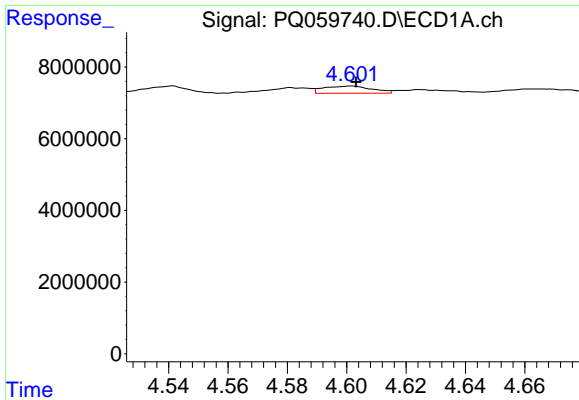
#12 AR-1232-2

R.T.: 4.324 min
 Delta R.T.: -0.003 min
 Response: 1245501
 Conc: 8.16 ng/ml



#12 AR-1232-2

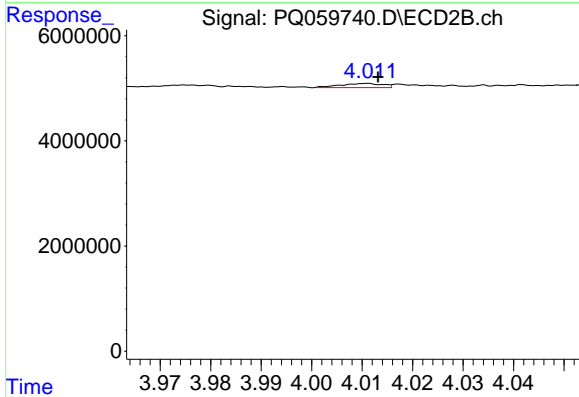
R.T.: 3.851 min
 Delta R.T.: 0.000 min
 Response: 1594117
 Conc: 8.27 ng/ml



#13 AR-1232-3

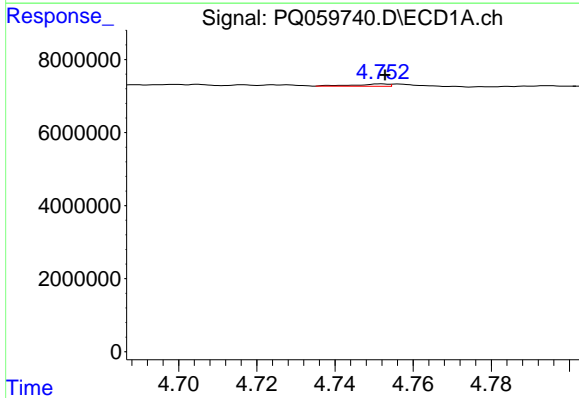
R.T.: 4.602 min
 Delta R.T.: -0.002 min
 Response: 2257810
 Conc: 8.16 ng/ml

Instrument :
 ECD_Q
 ClientSampleId :



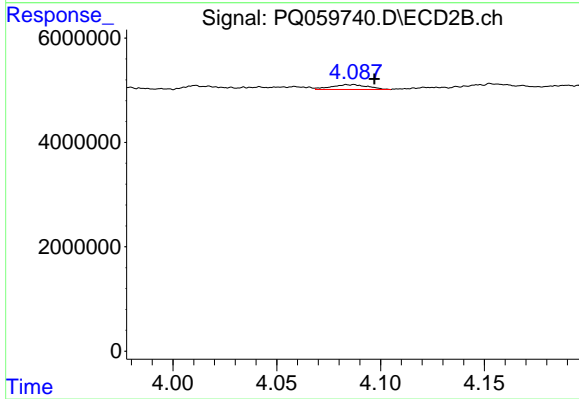
#13 AR-1232-3

R.T.: 4.011 min
 Delta R.T.: -0.002 min
 Response: 452064
 Conc: 4.55 ng/ml



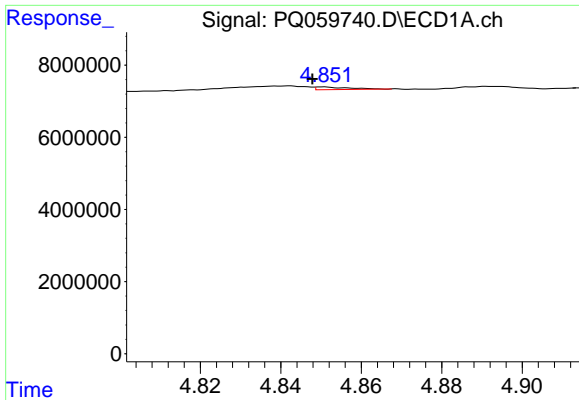
#14 AR-1232-4

R.T.: 4.752 min
 Delta R.T.: 0.000 min
 Response: 384713
 Conc: 2.70 ng/ml



#14 AR-1232-4

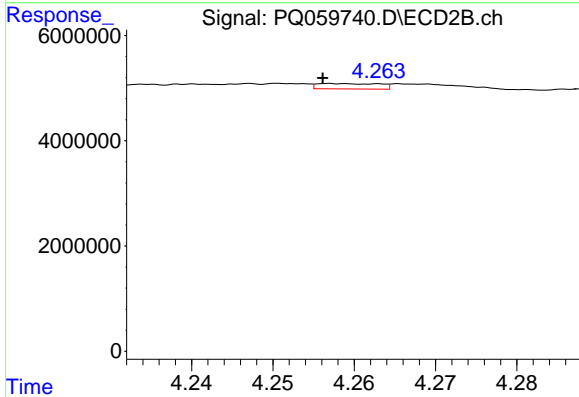
R.T.: 4.087 min
 Delta R.T.: -0.010 min
 Response: 1160732
 Conc: 14.01 ng/ml



#15 AR-1232-5

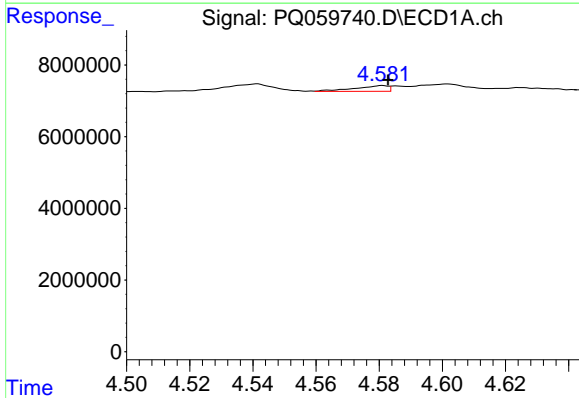
R.T.: 4.851 min
 Delta R.T.: 0.003 min
 Response: 427562
 Conc: 4.61 ng/ml

Instrument :
 ECD_Q
 ClientSampleId :



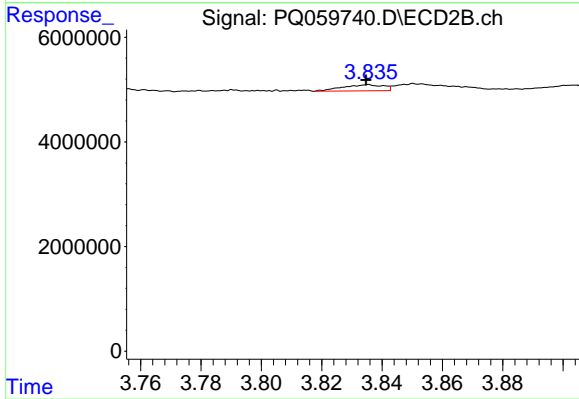
#15 AR-1232-5

R.T.: 4.257 min
 Delta R.T.: 0.001 min
 Response: 540794
 Conc: 5.41 ng/ml



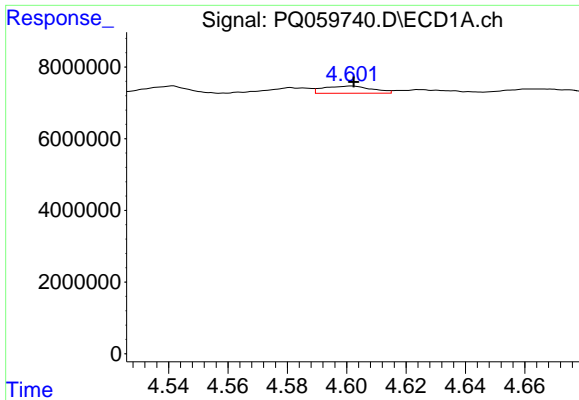
#16 AR-1242-1

R.T.: 4.581 min
 Delta R.T.: -0.002 min
 Response: 1174245
 Conc: 3.81 ng/ml



#16 AR-1242-1

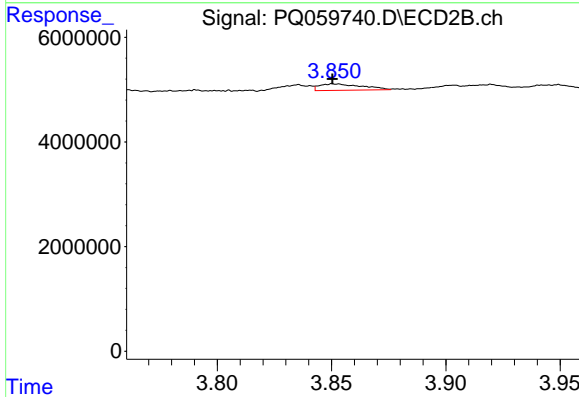
R.T.: 3.836 min
 Delta R.T.: 0.000 min
 Response: 1076790
 Conc: 5.00 ng/ml



#17 AR-1242-2

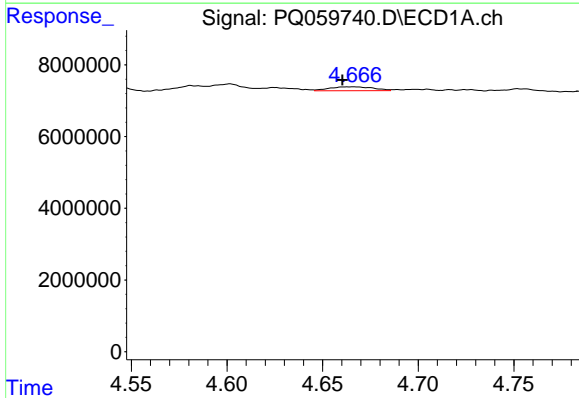
R.T.: 4.602 min
 Delta R.T.: 0.000 min
 Response: 2257810
 Conc: 5.04 ng/ml

Instrument :
 ECD_Q
 ClientSampleId :



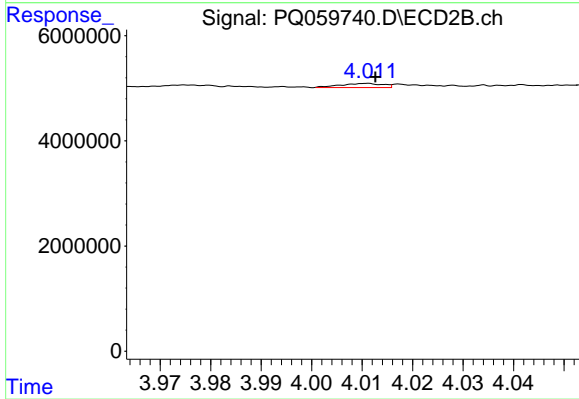
#17 AR-1242-2

R.T.: 3.851 min
 Delta R.T.: 0.000 min
 Response: 1594117
 Conc: 5.03 ng/ml



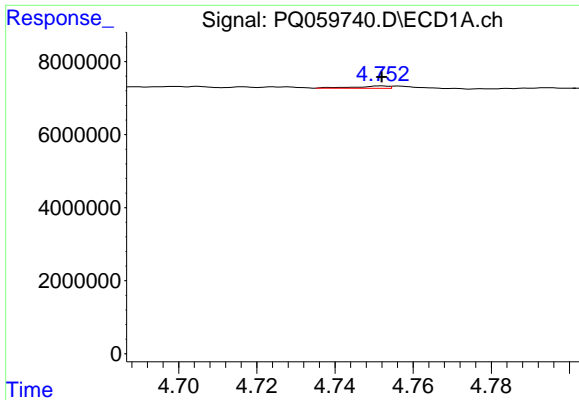
#18 AR-1242-3

R.T.: 4.666 min
 Delta R.T.: 0.006 min
 Response: 1733087
 Conc: 6.27 ng/ml



#18 AR-1242-3

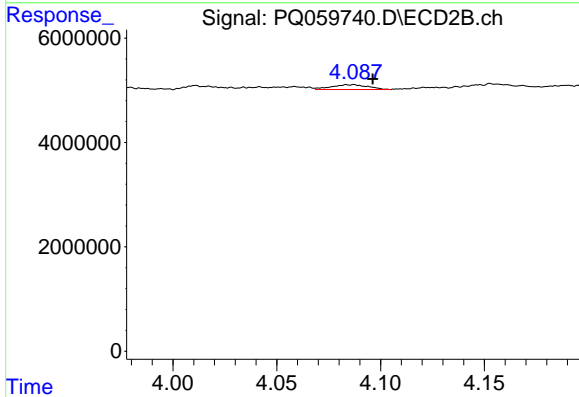
R.T.: 4.011 min
 Delta R.T.: -0.002 min
 Response: 452064
 Conc: 2.73 ng/ml



#19 AR-1242-4

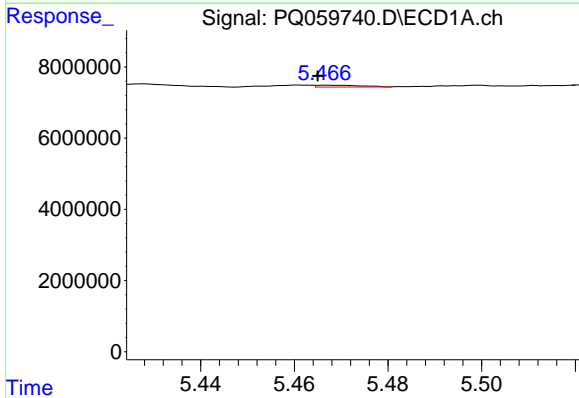
R.T.: 4.752 min
 Delta R.T.: 0.000 min
 Response: 384713
 Conc: 1.68 ng/ml

Instrument :
 ECD_Q
 ClientSampleId :



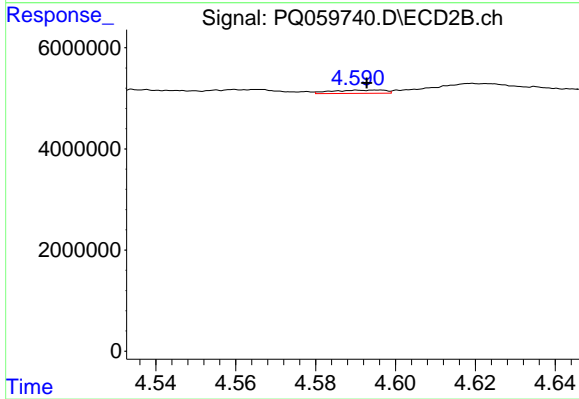
#19 AR-1242-4

R.T.: 4.087 min
 Delta R.T.: -0.009 min
 Response: 1160732
 Conc: 7.65 ng/ml



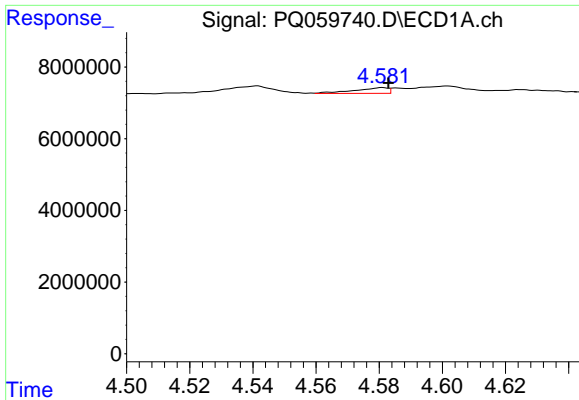
#20 AR-1242-5

R.T.: 5.466 min
 Delta R.T.: 0.001 min
 Response: 358755
 Conc: 1.47 ng/ml



#20 AR-1242-5

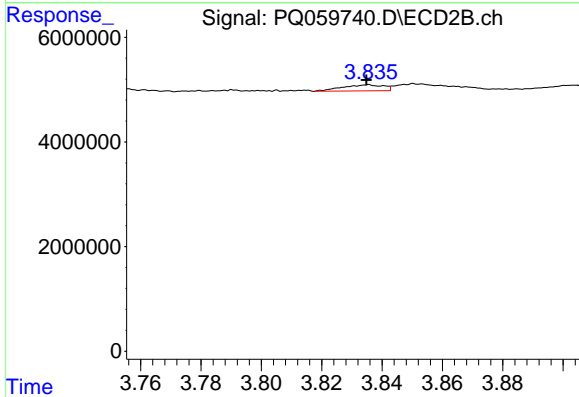
R.T.: 4.596 min
 Delta R.T.: 0.003 min
 Response: 594481
 Conc: 2.79 ng/ml



#21 AR-1248-1

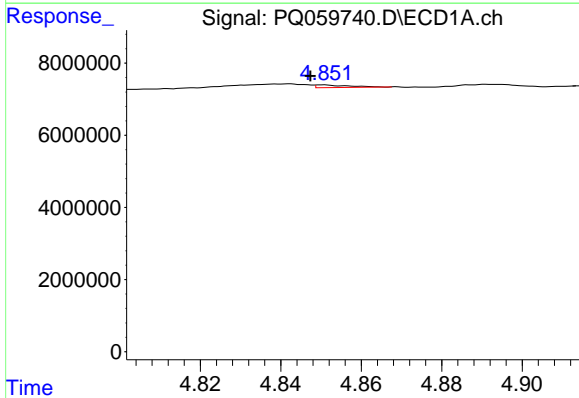
R.T.: 4.581 min
 Delta R.T.: -0.002 min
 Response: 1174245
 Conc: 4.86 ng/ml

Instrument :
 ECD_Q
 ClientSampleId :



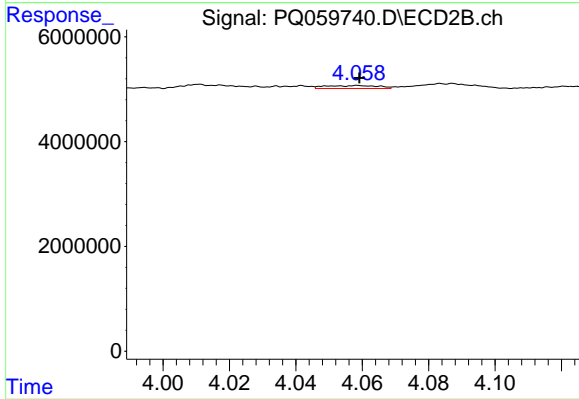
#21 AR-1248-1

R.T.: 3.836 min
 Delta R.T.: 0.000 min
 Response: 1076790
 Conc: 6.44 ng/ml



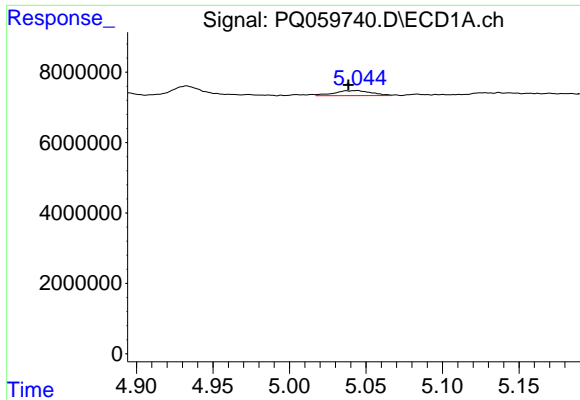
#22 AR-1248-2

R.T.: 4.851 min
 Delta R.T.: 0.003 min
 Response: 427562
 Conc: 1.49 ng/ml



#22 AR-1248-2

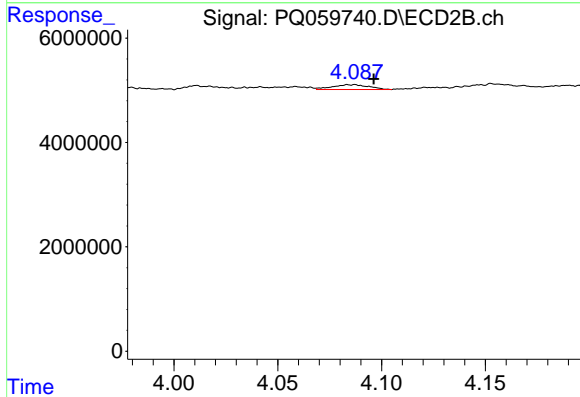
R.T.: 4.059 min
 Delta R.T.: 0.000 min
 Response: 615736
 Conc: 2.74 ng/ml



#23 AR-1248-3

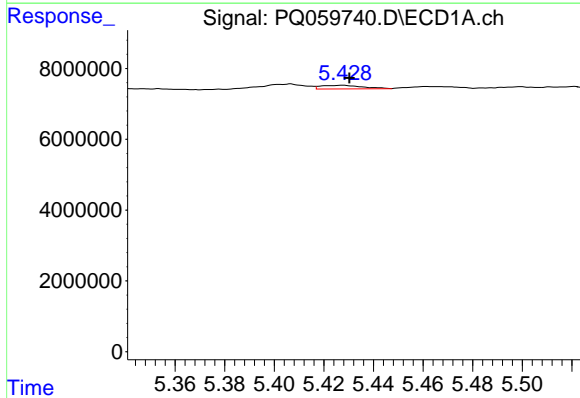
R.T.: 5.045 min
 Delta R.T.: 0.006 min
 Response: 2451115
 Conc: 6.48 ng/ml

Instrument :
 ECD_Q
 ClientSampleId :



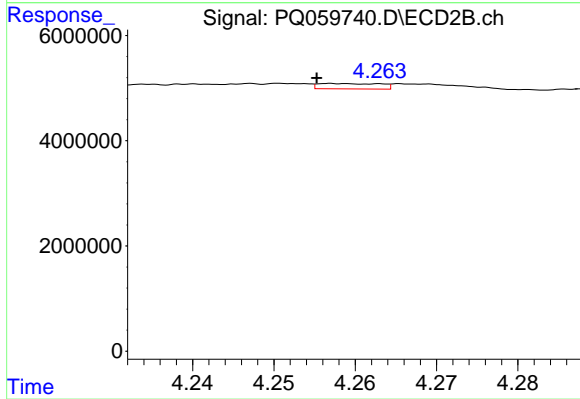
#23 AR-1248-3

R.T.: 4.087 min
 Delta R.T.: -0.009 min
 Response: 1160732
 Conc: 5.33 ng/ml



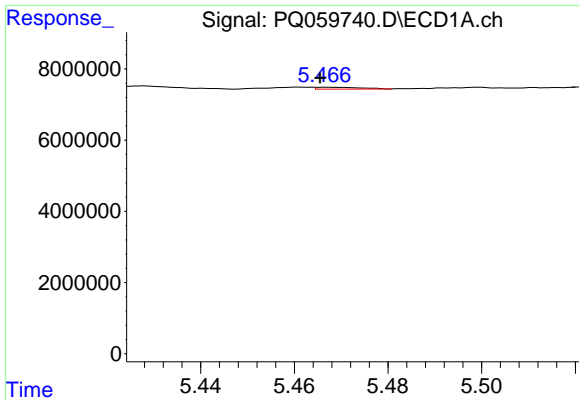
#24 AR-1248-4

R.T.: 5.428 min
 Delta R.T.: -0.002 min
 Response: 1197325
 Conc: 2.86 ng/ml



#24 AR-1248-4

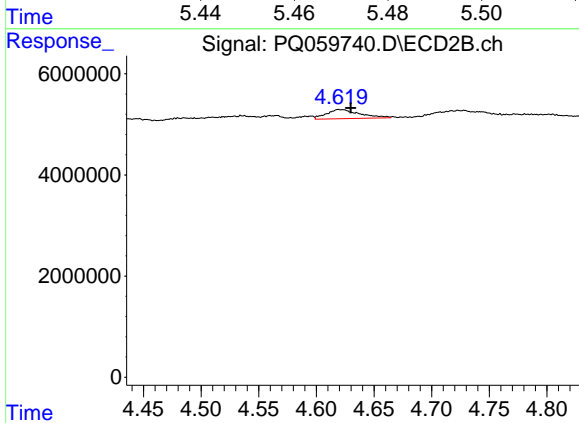
R.T.: 4.257 min
 Delta R.T.: 0.002 min
 Response: 540794
 Conc: 1.93 ng/ml



#25 AR-1248-5

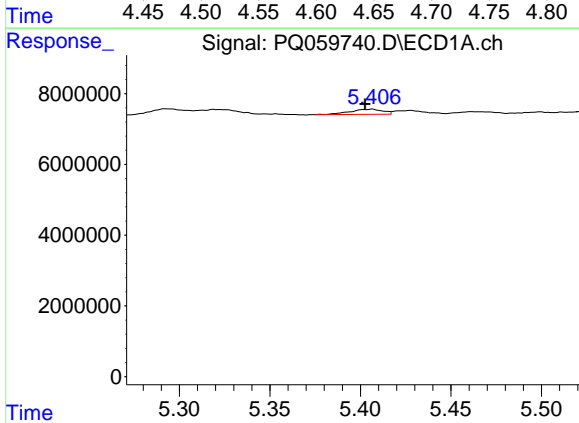
R.T.: 5.466 min
 Delta R.T.: 0.000 min
 Response: 358755
 Conc: 0.88 ng/ml

Instrument :
 ECD_Q
 ClientSampleId :



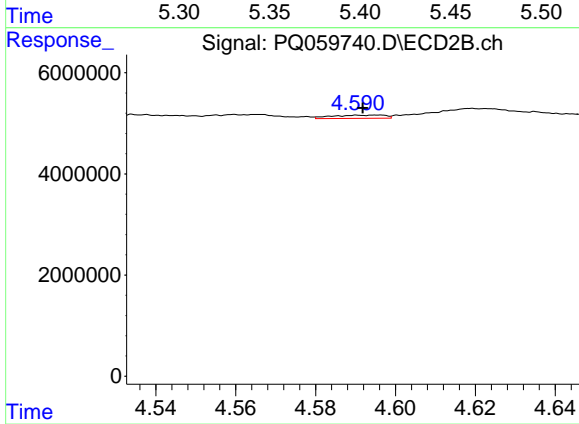
#25 AR-1248-5

R.T.: 4.619 min
 Delta R.T.: -0.011 min
 Response: 3632602
 Conc: 13.33 ng/ml



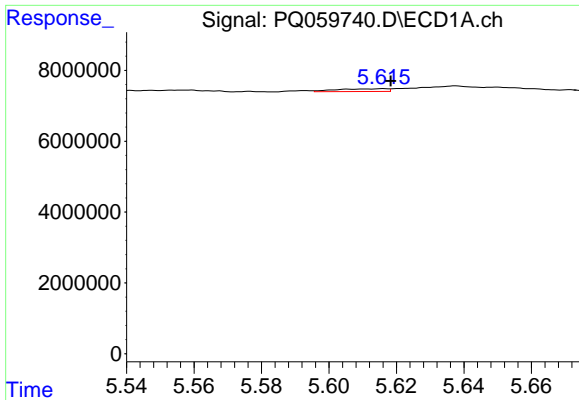
#26 AR-1254-1

R.T.: 5.407 min
 Delta R.T.: 0.004 min
 Response: 1835550
 Conc: 4.10 ng/ml



#26 AR-1254-1

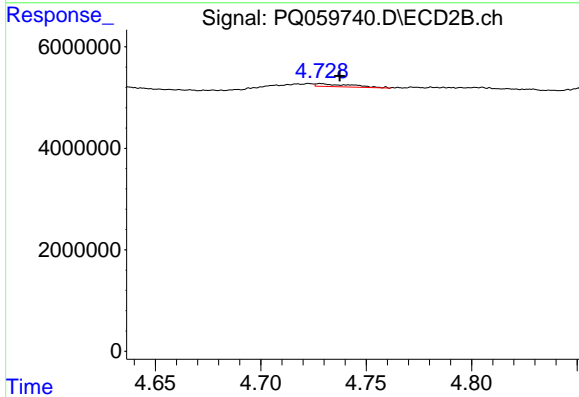
R.T.: 4.596 min
 Delta R.T.: 0.004 min
 Response: 594481
 Conc: 1.34 ng/ml



#27 AR-1254-2

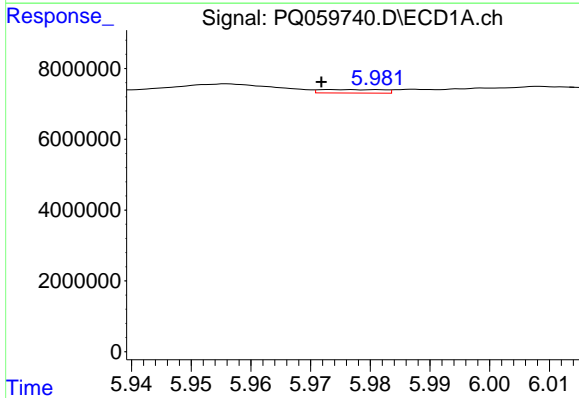
R.T.: 5.616 min
 Delta R.T.: -0.002 min
 Response: 820549
 Conc: 1.19 ng/ml

Instrument :
 ECD_Q
 ClientSampleId :



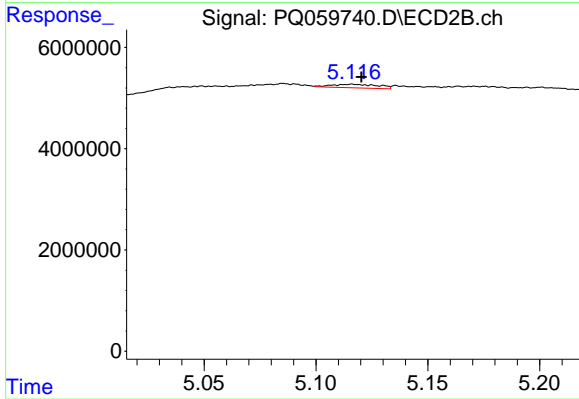
#27 AR-1254-2

R.T.: 4.728 min
 Delta R.T.: -0.009 min
 Response: 671371
 Conc: 1.72 ng/ml



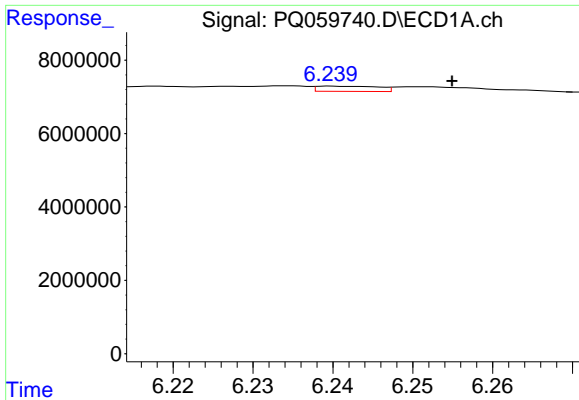
#28 AR-1254-3

R.T.: 5.973 min
 Delta R.T.: 0.002 min
 Response: 730591
 Conc: 1.02 ng/ml



#28 AR-1254-3

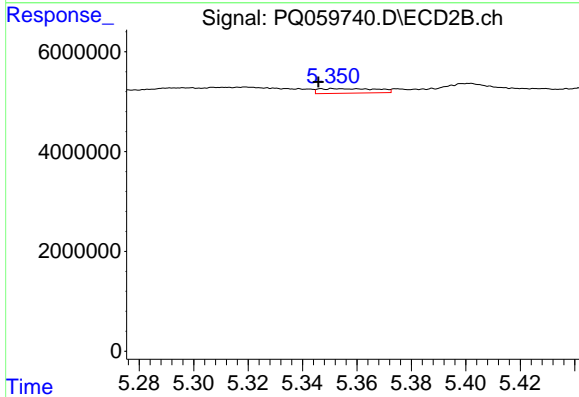
R.T.: 5.116 min
 Delta R.T.: -0.004 min
 Response: 1034818
 Conc: 1.72 ng/ml



#29 AR-1254-4

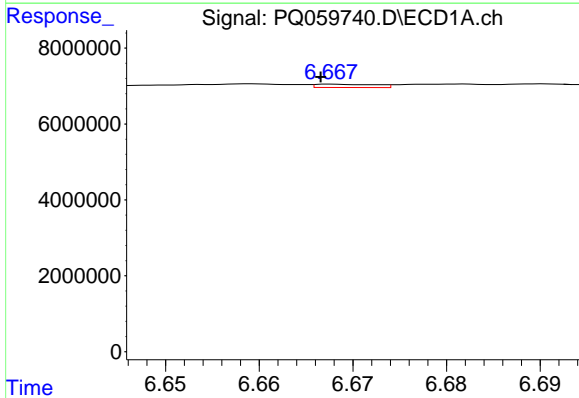
R.T.: 6.240 min
 Delta R.T.: -0.015 min
 Response: 762205
 Conc: 1.50 ng/ml

Instrument :
 ECD_Q
 ClientSampleId :



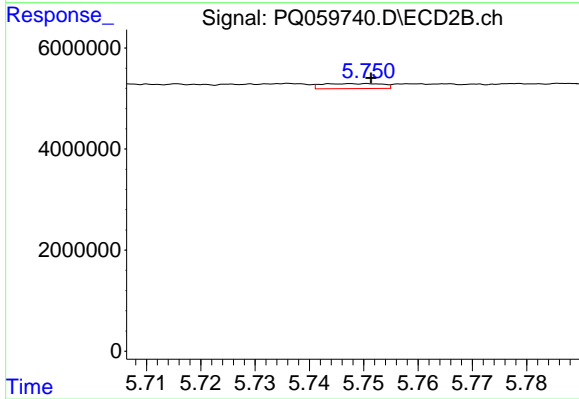
#29 AR-1254-4

R.T.: 5.347 min
 Delta R.T.: 0.001 min
 Response: 1363576
 Conc: 3.35 ng/ml



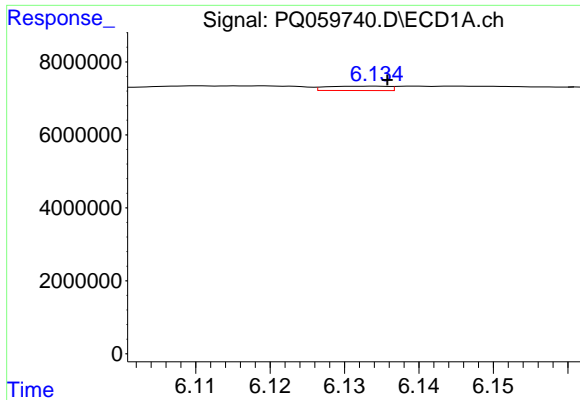
#30 AR-1254-5

R.T.: 6.668 min
 Delta R.T.: 0.001 min
 Response: 389267
 Conc: 0.73 ng/ml



#30 AR-1254-5

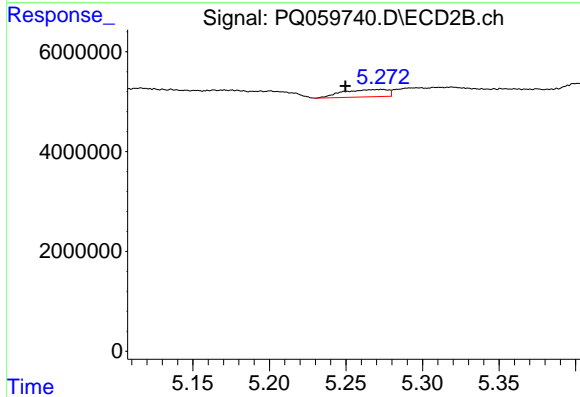
R.T.: 5.750 min
 Delta R.T.: -0.001 min
 Response: 763239
 Conc: 1.24 ng/ml



#31 AR-1260-1

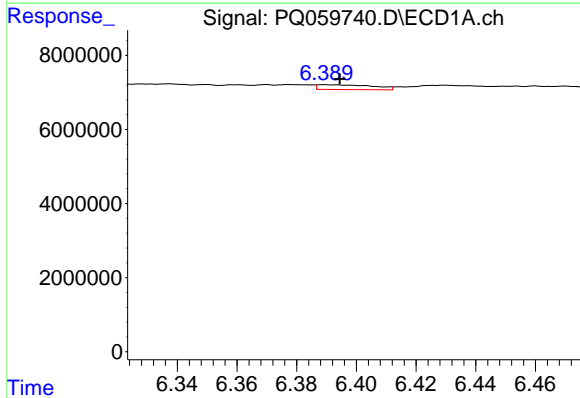
R.T.: 6.134 min
 Delta R.T.: -0.002 min
 Response: 695155
 Conc: 1.23 ng/ml

Instrument :
 ECD_Q
 ClientSampleId :



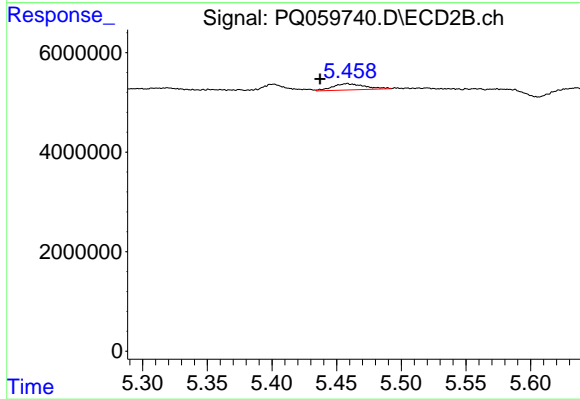
#31 AR-1260-1

R.T.: 5.274 min
 Delta R.T.: 0.024 min
 Response: 3002279
 Conc: 6.62 ng/ml



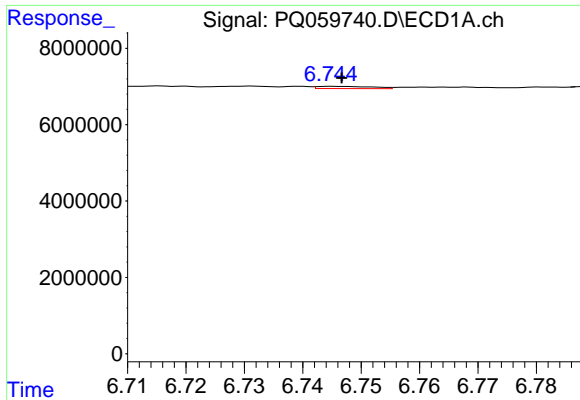
#32 AR-1260-2

R.T.: 6.389 min
 Delta R.T.: -0.005 min
 Response: 1678540
 Conc: 2.65 ng/ml



#32 AR-1260-2

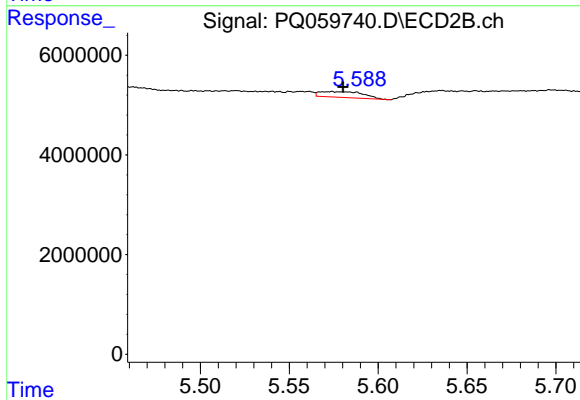
R.T.: 5.458 min
 Delta R.T.: 0.021 min
 Response: 2170542
 Conc: 3.90 ng/ml



#33 AR-1260-3

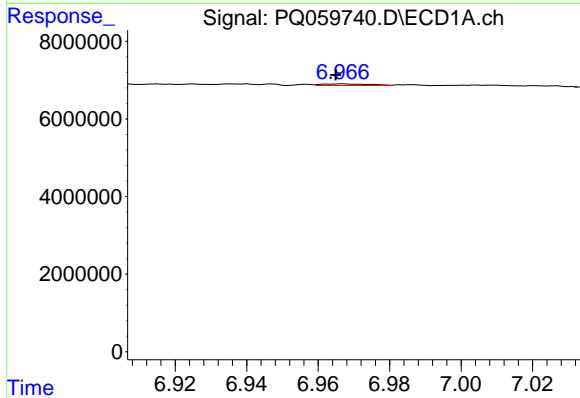
R.T.: 6.745 min
 Delta R.T.: -0.002 min
 Response: 379927
 Conc: 1.03 ng/ml

Instrument :
 ECD_Q
 ClientSampleId :



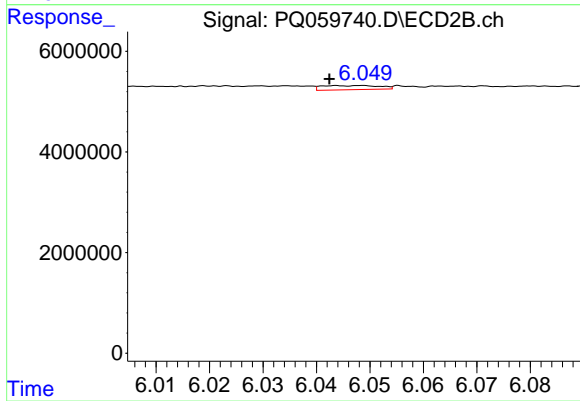
#33 AR-1260-3

R.T.: 5.574 min
 Delta R.T.: -0.006 min
 Response: 1958305
 Conc: 3.69 ng/ml



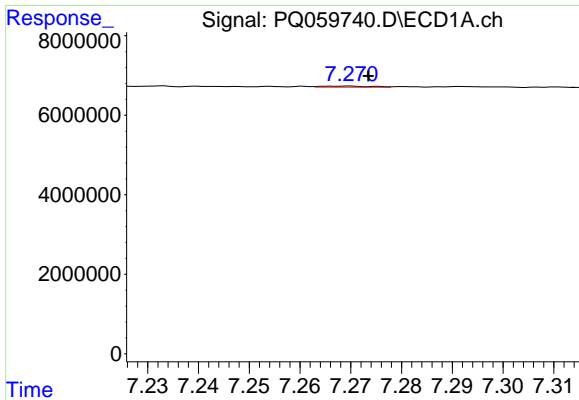
#34 AR-1260-4

R.T.: 6.967 min
 Delta R.T.: 0.002 min
 Response: 395726
 Conc: 0.95 ng/ml



#34 AR-1260-4

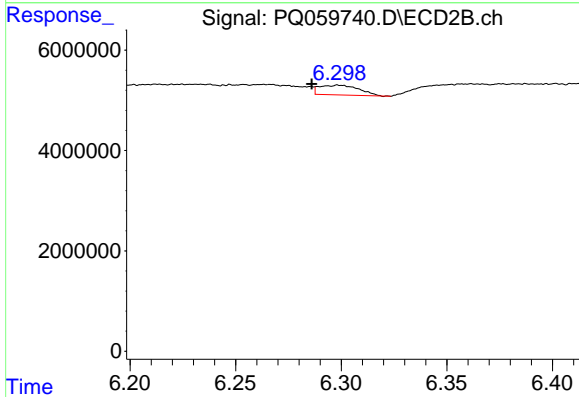
R.T.: 6.048 min
 Delta R.T.: 0.006 min
 Response: 612666
 Conc: 1.55 ng/ml



#35 AR-1260-5

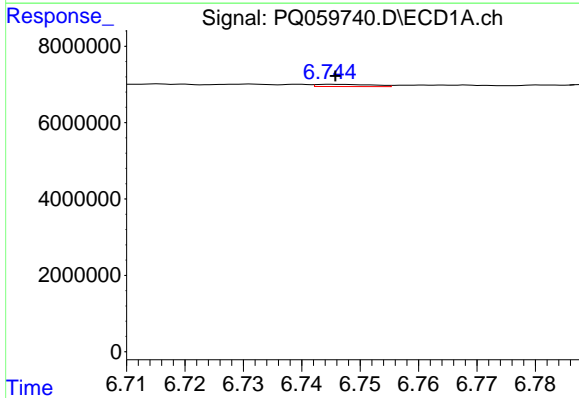
R.T.: 7.270 min
 Delta R.T.: -0.004 min
 Response: 185778
 Conc: 0.25 ng/ml

Instrument :
 ECD_Q
 ClientSampleId :



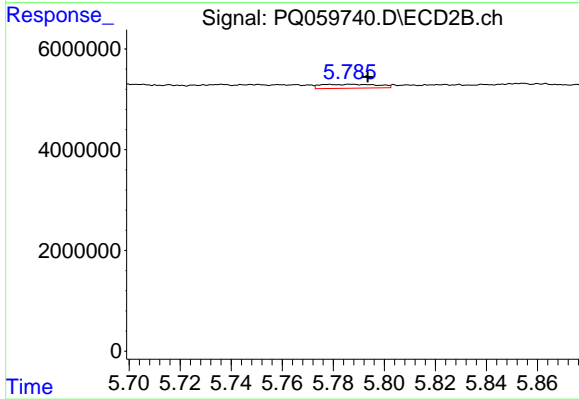
#35 AR-1260-5

R.T.: 6.299 min
 Delta R.T.: 0.013 min
 Response: 2530802
 Conc: 2.58 ng/ml



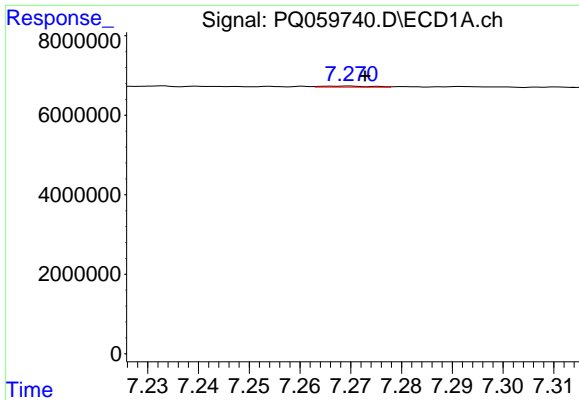
#36 AR-1262-1

R.T.: 6.745 min
 Delta R.T.: 0.000 min
 Response: 379927
 Conc: 0.66 ng/ml



#36 AR-1262-1

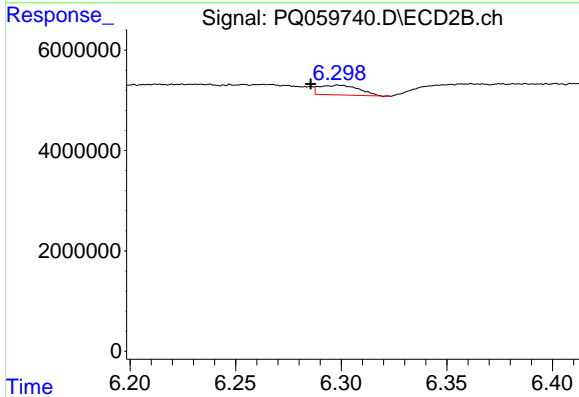
R.T.: 5.787 min
 Delta R.T.: -0.006 min
 Response: 1207809
 Conc: 2.02 ng/ml



#37 AR-1262-2

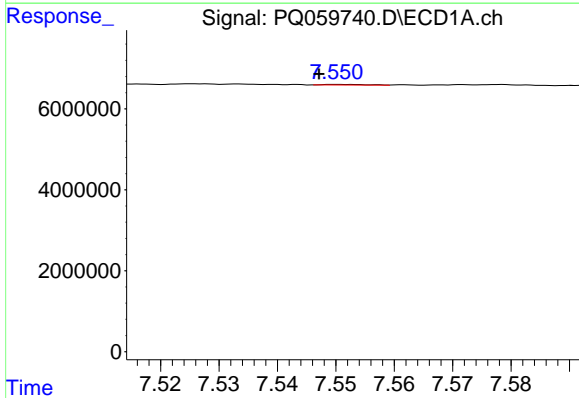
R.T.: 7.270 min
 Delta R.T.: -0.003 min
 Response: 185778
 Conc: 0.21 ng/ml

Instrument :
 ECD_Q
 ClientSampleId :



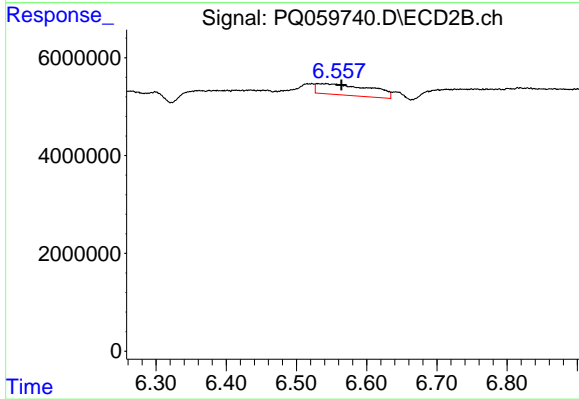
#37 AR-1262-2

R.T.: 6.299 min
 Delta R.T.: 0.014 min
 Response: 2530802
 Conc: 2.26 ng/ml



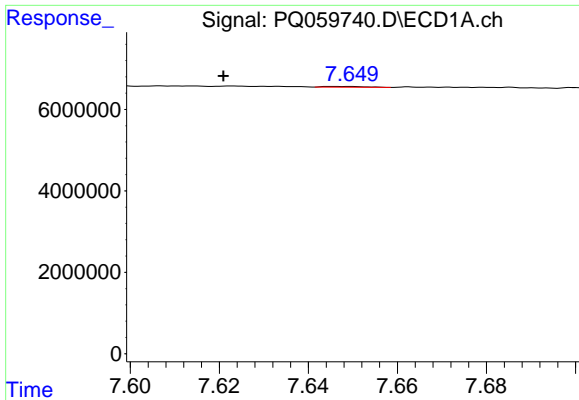
#38 AR-1262-3

R.T.: 7.550 min
 Delta R.T.: 0.003 min
 Response: 83588
 Conc: 0.15 ng/ml



#38 AR-1262-3

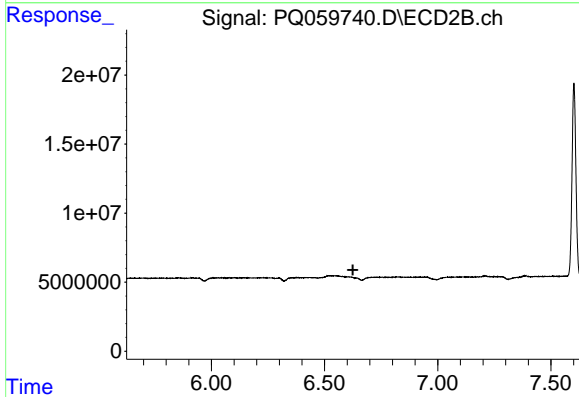
R.T.: 6.537 min
 Delta R.T.: -0.027 min
 Response: 12017145
 Conc: 27.15 ng/ml



#39 AR-1262-4

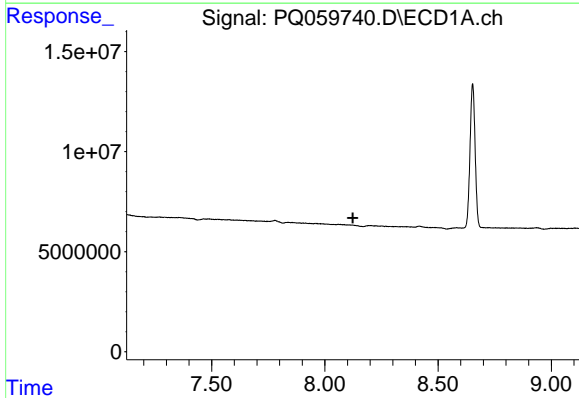
R.T.: 7.649 min
 Delta R.T.: 0.028 min
 Response: 125592
 Conc: 0.49 ng/ml

Instrument :
 ECD_Q
 ClientSampleId :



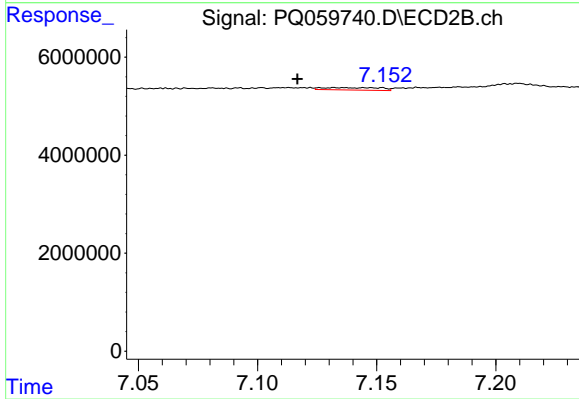
#39 AR-1262-4

R.T.: 0.000 min
 Exp R.T. : 6.625 min
 Response: 0
 Conc: N.D.



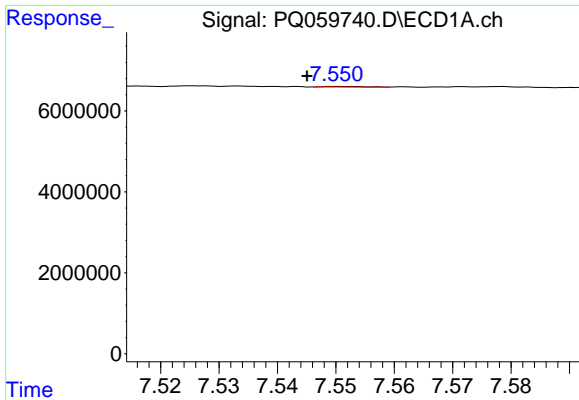
#40 AR-1262-5

R.T.: 0.000 min
 Exp R.T. : 8.124 min
 Response: 0
 Conc: N.D.



#40 AR-1262-5

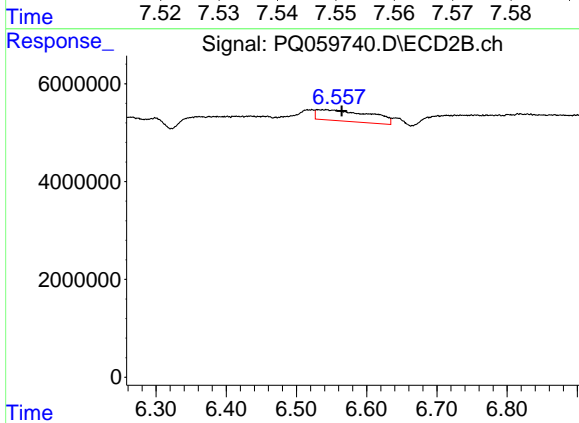
R.T.: 7.132 min
 Delta R.T.: 0.016 min
 Response: 846693
 Conc: 2.15 ng/ml



#41 AR-1268-1

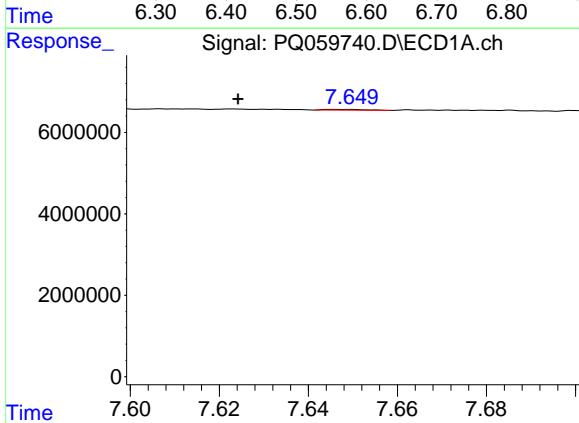
R.T.: 7.550 min
 Delta R.T.: 0.005 min
 Response: 83588
 Conc: 0.09 ng/ml

Instrument :
 ECD_Q
 ClientSampleId :



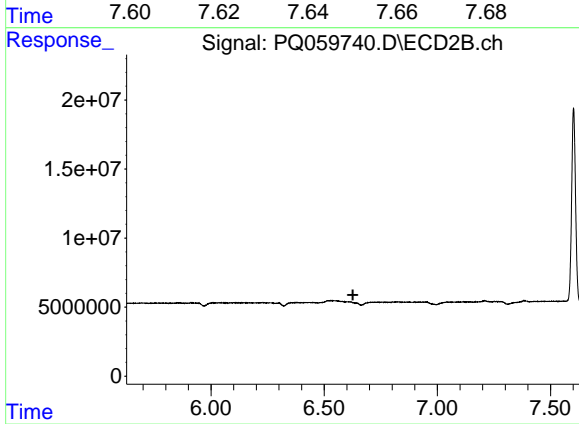
#41 AR-1268-1

R.T.: 6.537 min
 Delta R.T.: -0.028 min
 Response: 12017145
 Conc: 9.02 ng/ml



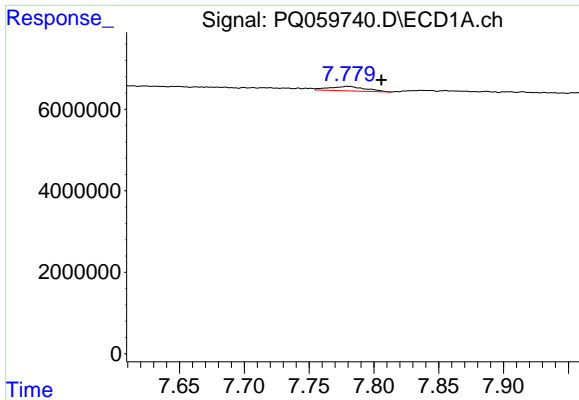
#42 AR-1268-2

R.T.: 7.649 min
 Delta R.T.: 0.025 min
 Response: 125592
 Conc: 0.15 ng/ml



#42 AR-1268-2

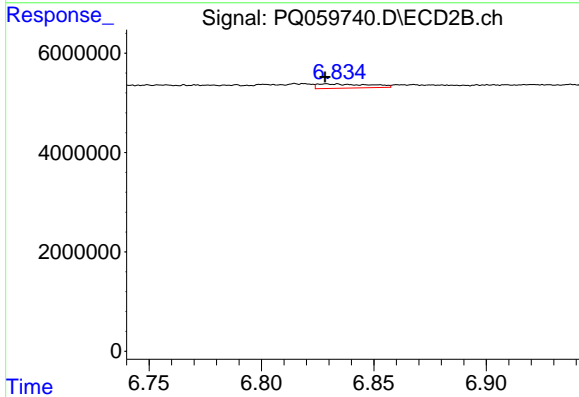
R.T.: 0.000 min
 Exp R.T.: 6.627 min
 Response: 0
 Conc: N.D.



#43 AR-1268-3

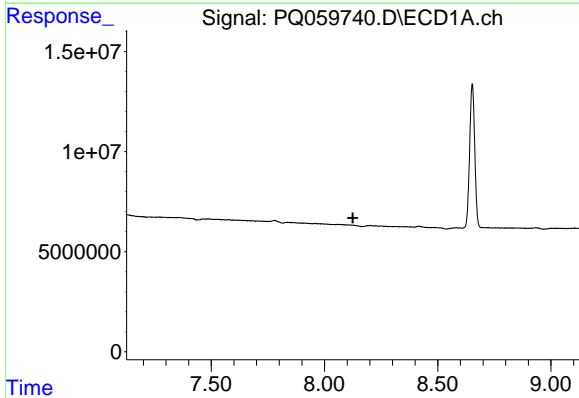
R.T.: 7.779 min
 Delta R.T.: -0.027 min
 Response: 2098491
 Conc: 3.03 ng/ml

Instrument :
 ECD_Q
 ClientSampleId :



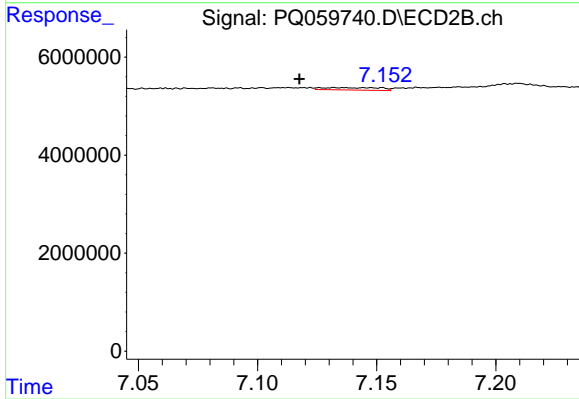
#43 AR-1268-3

R.T.: 6.829 min
 Delta R.T.: 0.000 min
 Response: 1365672
 Conc: 1.30 ng/ml



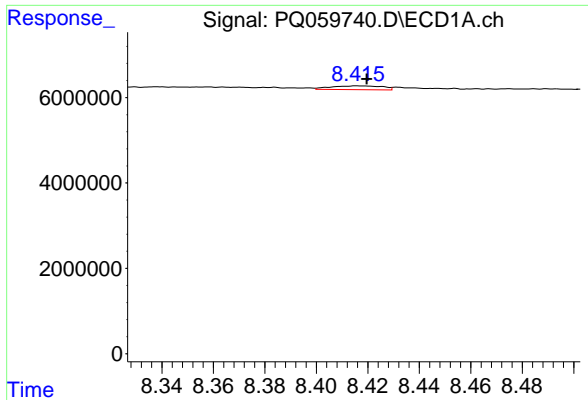
#44 AR-1268-4

R.T.: 0.000 min
 Exp R.T. : 8.126 min
 Response: 0
 Conc: N.D.



#44 AR-1268-4

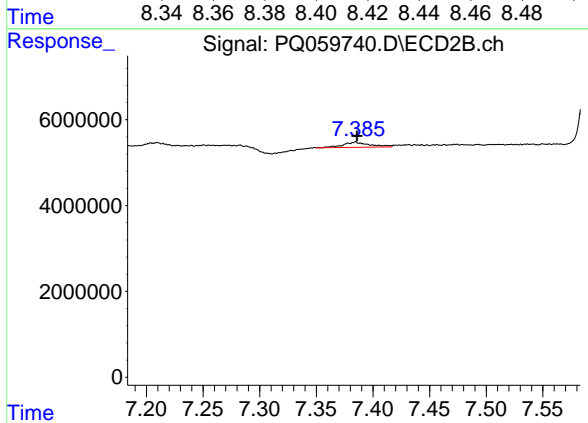
R.T.: 7.132 min
 Delta R.T.: 0.015 min
 Response: 846693
 Conc: 1.93 ng/ml



#45 AR-1268-5

R.T.: 8.416 min
Delta R.T.: -0.004 min
Response: 1256377
Conc: 0.62 ng/ml

Instrument :
ECD_Q
ClientSampleId :



#45 AR-1268-5

R.T.: 7.385 min
Delta R.T.: -0.001 min
Response: 1932352
Conc: 0.57 ng/ml