

Data Path : Z:\pestpcbsrv\HPCHEM1\ECD_Q\Data\PQ102222\
 Data File : PQ059770.D
 Signal(s) : Signal #1: ECD1A.ch Signal #2: ECD2B.ch
 Acq On : 21 Oct 2022 22:30
 Operator : YP\AJ
 Sample : PB148478BL
 Misc :
 ALS Vial : 47 Sample Multiplier: 1

Instrument :
 ECD_Q
 ClientSampleId :

Integration File signal 1: autoint1.e
 Integration File signal 2: autoint2.e
 Quant Time: Oct 22 13:17:03 2022
 Quant Method : Z:\pestpcbsrv\HPCHEM1\ECD_Q\Method\PQ102122.M
 Quant Title : GC EXTRACTABLES
 QLast Update : Fri Oct 21 08:02:10 2022
 Response via : Initial Calibration
 Integrator: ChemStation

Volume Inj. : 2 µl
 Signal #1 Phase : ZB-MR2 Signal #2 Phase: ZB-MR2
 Signal #1 Info : 30Mx0.32mmx 0.50µ Signal #2 Info : 30M x 0.32mm x 0.25µm

Compound	RT#1	RT#2	Resp#1	Resp#2	ng/ml	ng/ml
System Monitoring Compounds						
1) SA Tetrachlo...	3.483	2.828	242.2E6	173.7E6	21.415	21.791
2) SA Decachlor...	8.653	7.601	123.1E6	184.5E6	22.507	21.958
Target Compounds						
3) L1 AR-1016-1	4.588	3.833	202743	413578	0.482	1.449 #
4) L1 AR-1016-2	4.601	3.854	228442	120419	0.371	0.284
5) L1 AR-1016-3	4.665	4.023	229448	113197	0.615	0.514
6) L1 AR-1016-4	4.767	4.060	53458	315698	0.175	1.846 #
7) L1 AR-1016-5	5.043	4.251	703040	210506	2.272	0.938 #
8) L2 AR-1221-1	3.682	3.047f	157348	154176	1.126	1.574 #
9) L2 AR-1221-2	3.762	3.099	3994059	2192819	38.255	29.974
10) L2 AR-1221-3	3.833	3.182	355966	167115	1.145	0.742 #
11) L3 AR-1232-1	3.833	3.182	355966	167115	1.458	0.955 #
12) L3 AR-1232-2	4.321	3.854	85145	120419	0.558	0.625
13) L3 AR-1232-3	4.601	4.023	228442	113197	0.826	1.140 #
14) L3 AR-1232-4	4.767	4.081f	53458	464623	0.375	5.608 #
15) L3 AR-1232-5	4.846	4.251	262353	210506	2.828	2.105 #
16) L4 AR-1242-1	4.578	3.833	252198	413578	0.819	1.921 #
17) L4 AR-1242-2	4.601	3.854	228442	120419	0.510	0.380 #
18) L4 AR-1242-3	4.665	4.023	229448	113197	0.830	0.682
19) L4 AR-1242-4	4.767	4.081f	53458	464623	0.233	3.063 #
20) L4 AR-1242-5	5.467	4.591	518791	242251	2.123	1.136 #
21) L5 AR-1248-1	4.578	3.833	252198	413578	1.045	2.473 #
22) L5 AR-1248-2	4.846	4.060	262353	315698	0.914	1.407 #
23) L5 AR-1248-3	5.043	4.081f	703040	464623	1.859	2.133
24) L5 AR-1248-4	5.408f	4.251	2230803	210506	5.330	0.751 #
25) L5 AR-1248-5	5.467	4.616	518791	1412136	1.269	5.183 #
26) L6 AR-1254-1	5.408	4.591	2230803	242251	4.989	0.546 #
27) L6 AR-1254-2	5.618	4.727	202682	283731	0.294	0.726 #
28) L6 AR-1254-3	5.977	5.122	310604	161481	0.433	0.268 #
29) L6 AR-1254-4	6.250	5.350	179224	422857	0.354	1.039 #
30) L6 AR-1254-5	6.665	5.748	137625	523523	0.260	0.847 #
31) L7 AR-1260-1	6.147	5.254	127189	374343	0.224	0.825 #
32) L7 AR-1260-2	6.377f	5.458f	1041317	709795	1.643	1.275
33) L7 AR-1260-3	0.000	5.588	0	540317	N.D.	1.017 #
34) L7 AR-1260-4	6.969	6.046	154322	226268	0.371	0.573 #
35) L7 AR-1260-5	7.275	6.305f	57488	507411	0.077	0.518 #
36) L8 AR-1262-1	0.000	5.798	0	651261	N.D.	1.088 #
37) L8 AR-1262-2	7.275	6.305f	57488	507411	0.065	0.453 #
38) L8 AR-1262-3	7.536	6.590f	98720	2215150	0.179	5.005 #
39) L8 AR-1262-4	0.000	6.646f	0	453511	N.D.	0.541 #
41) L9 AR-1268-1	7.536	6.590f	98720	2215150	0.104	1.662 #
42) L9 AR-1268-2	0.000	6.646f	0	453511	N.D.	0.372 #

Data Path : Z:\pestpcbsrv\HPCHEM1\ECD_Q\Data\PQ102222\
 Data File : PQ059770.D
 Signal(s) : Signal #1: ECD1A.ch Signal #2: ECD2B.ch
 Acq On : 21 Oct 2022 22:30
 Operator : YP\AJ
 Sample : PB148478BL
 Misc :
 ALS Vial : 47 Sample Multiplier: 1

Instrument :
 ECD_Q
 ClientSampleId :

Integration File signal 1: autoint1.e
 Integration File signal 2: autoint2.e
 Quant Time: Oct 22 13:17:03 2022
 Quant Method : Z:\pestpcbsrv\HPCHEM1\ECD_Q\Method\PQ102122.M
 Quant Title : GC EXTRACTABLES
 QLast Update : Fri Oct 21 08:02:10 2022
 Response via : Initial Calibration
 Integrator: ChemStation

Volume Inj. : 2 µl
 Signal #1 Phase : ZB-MR1 Signal #2 Phase: ZB-MR2
 Signal #1 Info : 30Mx0.32mmx 0.50µ Signal #2 Info : 30M x 0.32mm x 0.25µm

	Compound	RT#1	RT#2	Resp#1	Resp#2	ng/ml	ng/ml
43)	L9 AR-1268-3	7.786f	6.828	75433	1201589	0.109	1.144 #
45)	L9 AR-1268-5	8.417	7.383	1132232	1299989	0.555	0.384 #

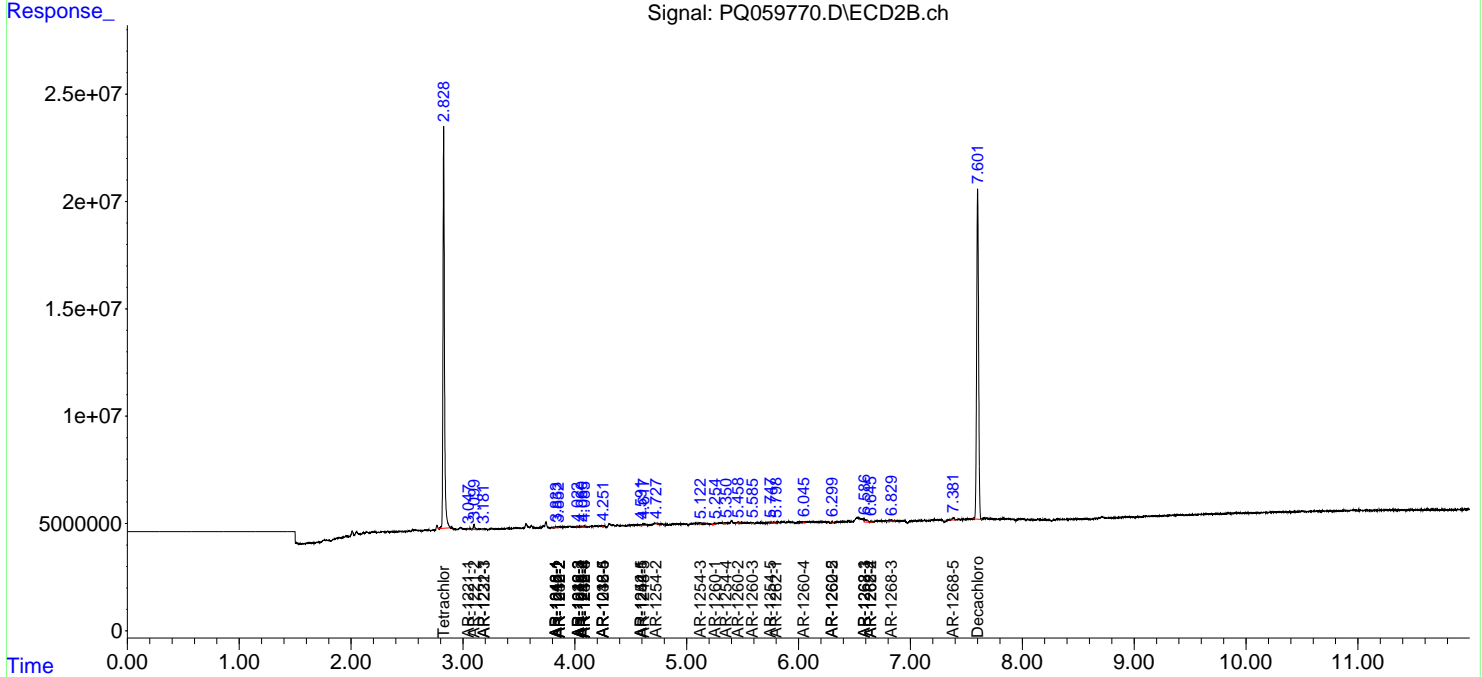
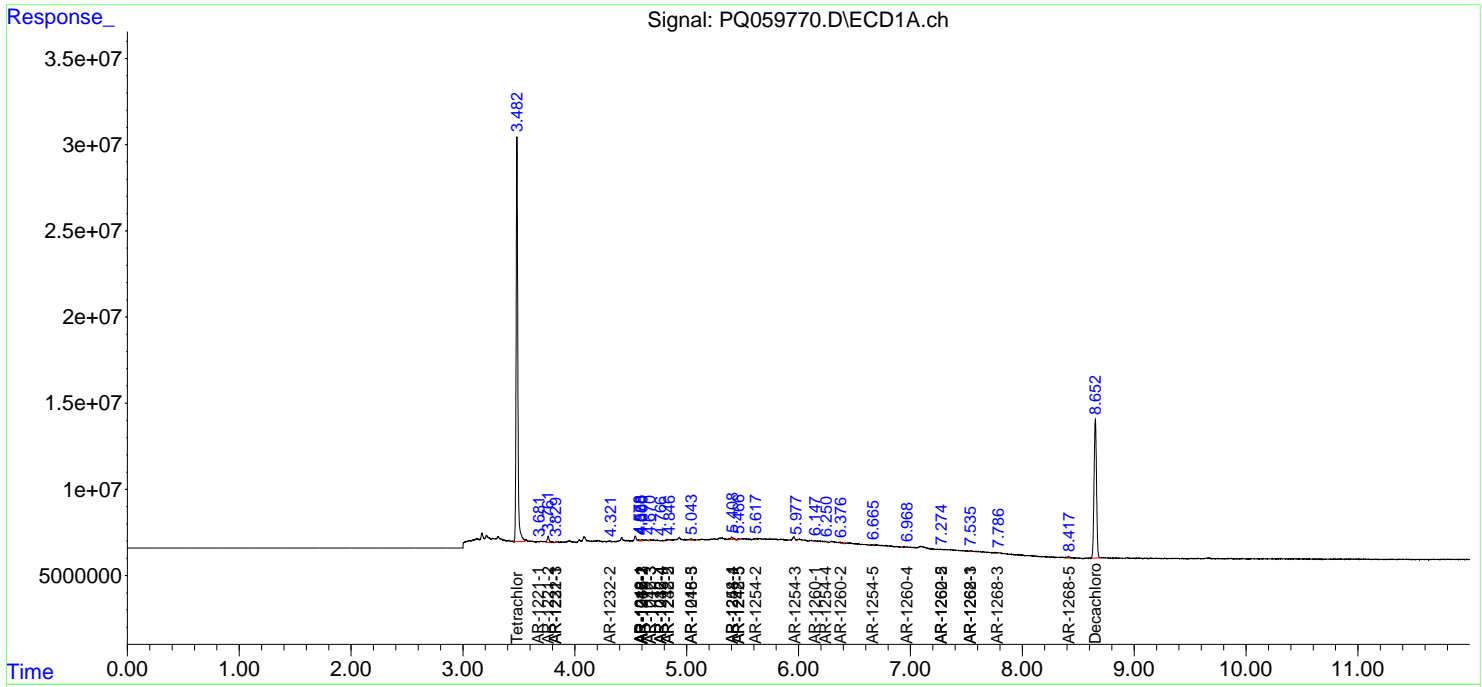
(f)=RT Delta > 1/2 Window (#)=Amounts differ by > 25% (m)=manual int.

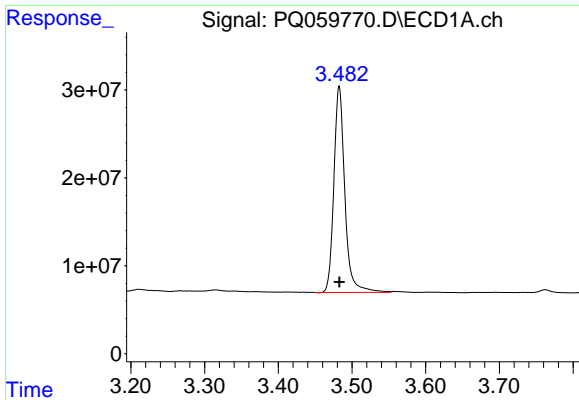
Data Path : Z:\pestpcbsrv\HPCHEM1\ECD_Q\Data\PQ102222\
 Data File : PQ059770.D
 Signal(s) : Signal #1: ECD1A.ch Signal #2: ECD2B.ch
 Acq On : 21 Oct 2022 22:30
 Operator : YP\AJ
 Sample : PB148478BL
 Misc :
 ALS Vial : 47 Sample Multiplier: 1

Instrument :
 ECD_Q
 ClientSampleId :

Integration File signal 1: autoint1.e
 Integration File signal 2: autoint2.e
 Quant Time: Oct 22 13:17:03 2022
 Quant Method : Z:\pestpcbsrv\HPCHEM1\ECD_Q\Method\PQ102122.M
 Quant Title : GC EXTRACTABLES
 QLast Update : Fri Oct 21 08:02:10 2022
 Response via : Initial Calibration
 Integrator: ChemStation

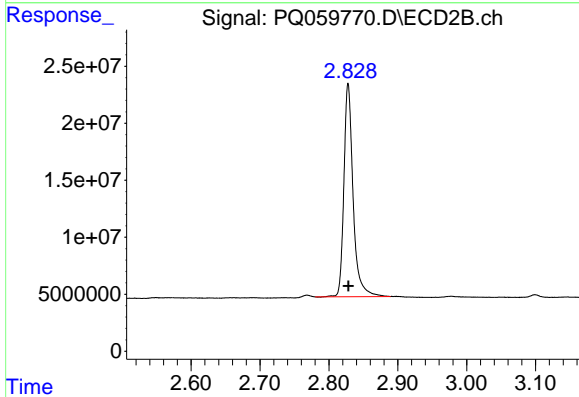
Volume Inj. : 2 µl
 Signal #1 Phase : ZB-MR1 Signal #2 Phase: ZB-MR2
 Signal #1 Info : 30Mx0.32mmx 0.50µ Signal #2 Info : 30M x 0.32mm x 0.25µm



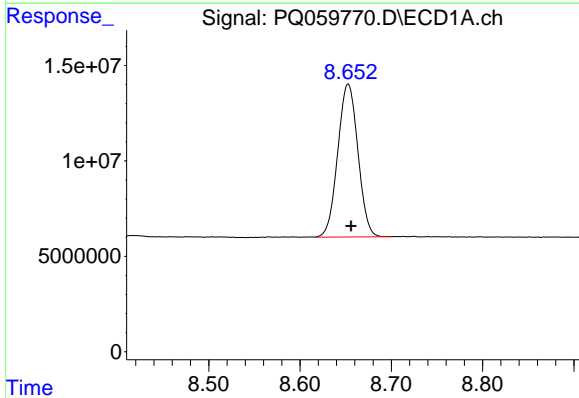


#1 Tetrachloro-m-xylene
 R.T.: 3.483 min
 Delta R.T.: 0.000 min
 Response: 242168745
 Conc: 21.42 ng/ml

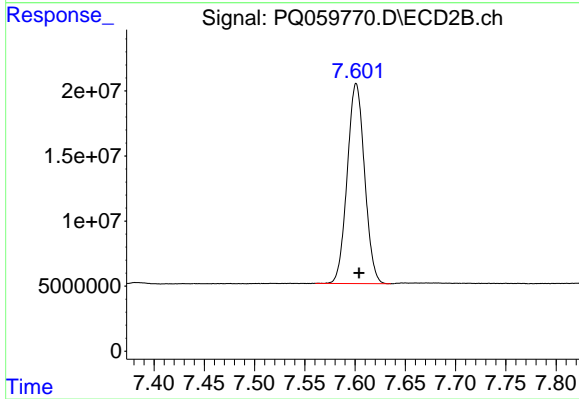
Instrument :
 ECD_Q
 ClientSampleId :



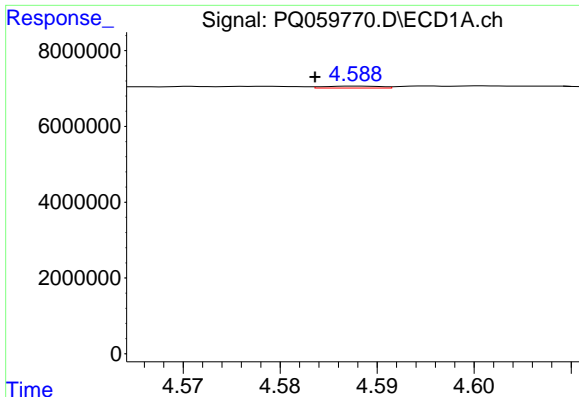
#1 Tetrachloro-m-xylene
 R.T.: 2.828 min
 Delta R.T.: 0.000 min
 Response: 173711819
 Conc: 21.79 ng/ml



#2 Decachlorobiphenyl
 R.T.: 8.653 min
 Delta R.T.: -0.003 min
 Response: 123061019
 Conc: 22.51 ng/ml



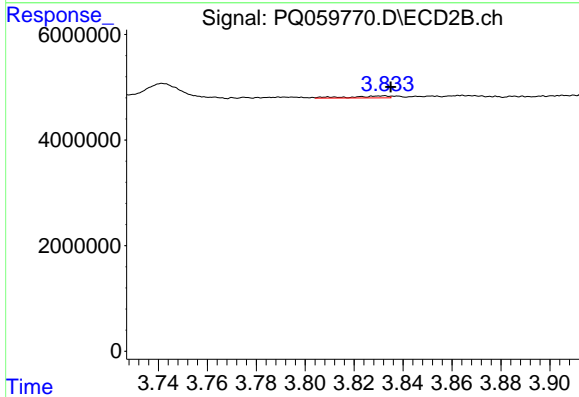
#2 Decachlorobiphenyl
 R.T.: 7.601 min
 Delta R.T.: -0.003 min
 Response: 184487465
 Conc: 21.96 ng/ml



#3 AR-1016-1

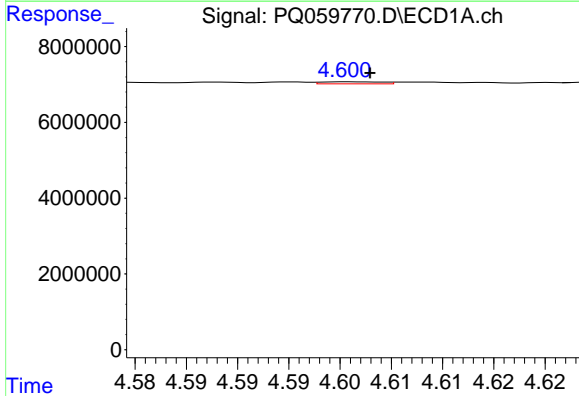
R.T.: 4.588 min
 Delta R.T.: 0.004 min
 Response: 202743
 Conc: 0.48 ng/ml

Instrument :
 ECD_Q
 ClientSampleId :



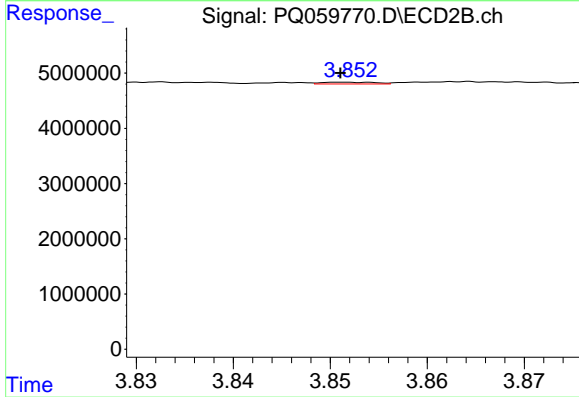
#3 AR-1016-1

R.T.: 3.833 min
 Delta R.T.: -0.002 min
 Response: 413578
 Conc: 1.45 ng/ml



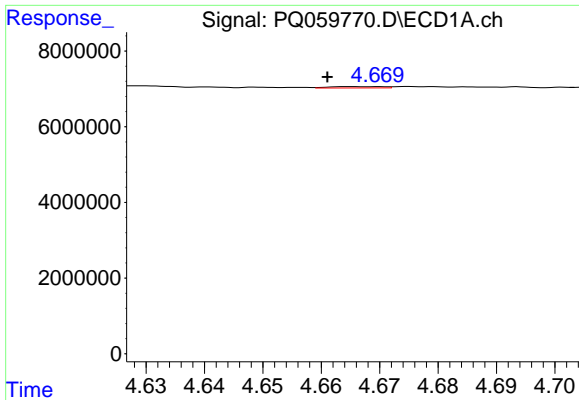
#4 AR-1016-2

R.T.: 4.601 min
 Delta R.T.: -0.002 min
 Response: 228442
 Conc: 0.37 ng/ml



#4 AR-1016-2

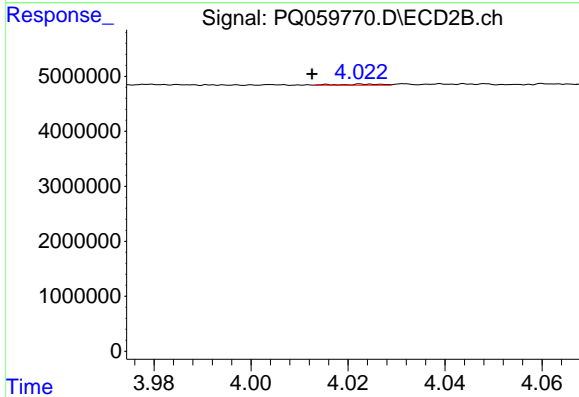
R.T.: 3.854 min
 Delta R.T.: 0.003 min
 Response: 120419
 Conc: 0.28 ng/ml



#5 AR-1016-3

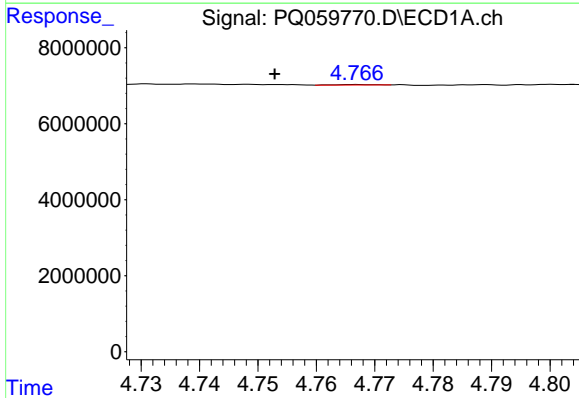
R.T.: 4.665 min
 Delta R.T.: 0.004 min
 Response: 229448
 Conc: 0.62 ng/ml

Instrument :
 ECD_Q
 ClientSampleId :



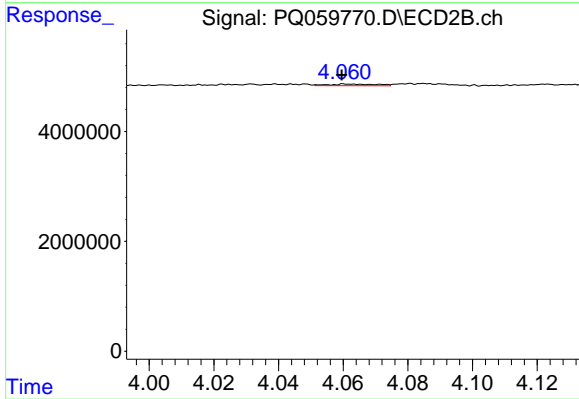
#5 AR-1016-3

R.T.: 4.023 min
 Delta R.T.: 0.010 min
 Response: 113197
 Conc: 0.51 ng/ml



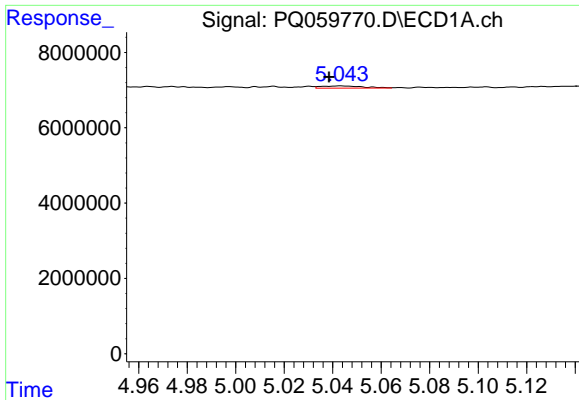
#6 AR-1016-4

R.T.: 4.767 min
 Delta R.T.: 0.014 min
 Response: 53458
 Conc: 0.17 ng/ml



#6 AR-1016-4

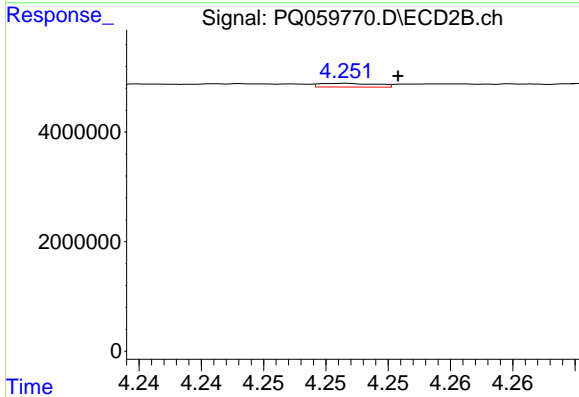
R.T.: 4.060 min
 Delta R.T.: 0.000 min
 Response: 315698
 Conc: 1.85 ng/ml



#7 AR-1016-5

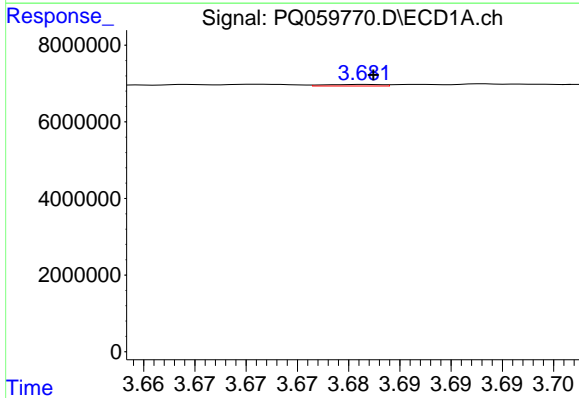
R.T.: 5.043 min
 Delta R.T.: 0.005 min
 Response: 703040
 Conc: 2.27 ng/ml

Instrument :
 ECD_Q
 ClientSampleId :



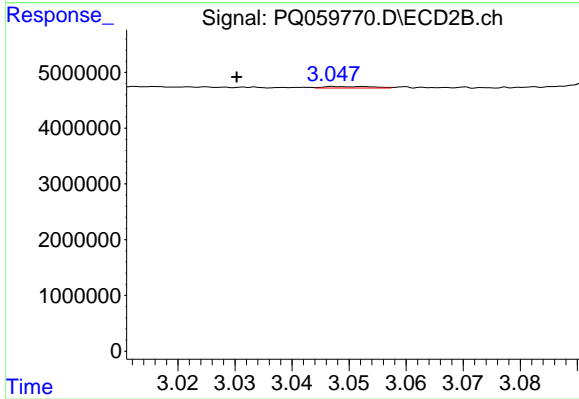
#7 AR-1016-5

R.T.: 4.251 min
 Delta R.T.: -0.004 min
 Response: 210506
 Conc: 0.94 ng/ml



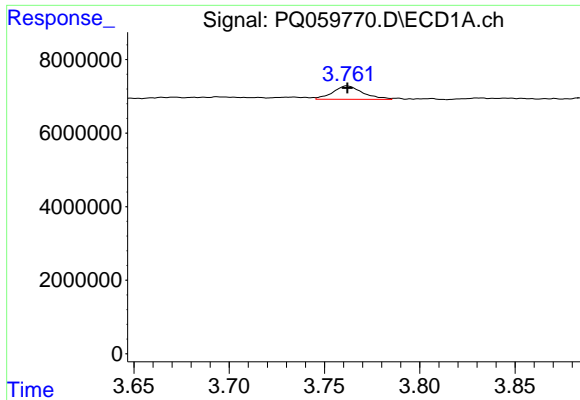
#8 AR-1221-1

R.T.: 3.682 min
 Delta R.T.: 0.000 min
 Response: 157348
 Conc: 1.13 ng/ml



#8 AR-1221-1

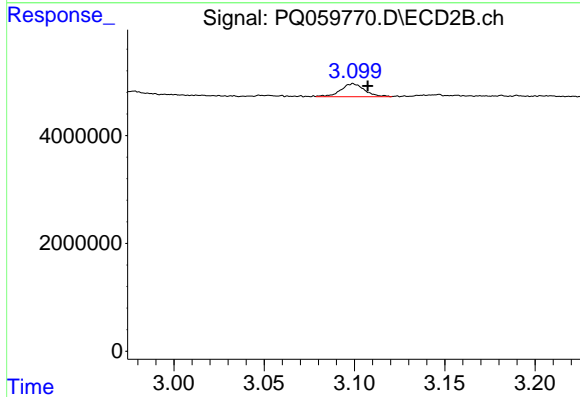
R.T.: 3.047 min
 Delta R.T.: 0.017 min
 Response: 154176
 Conc: 1.57 ng/ml



#9 AR-1221-2

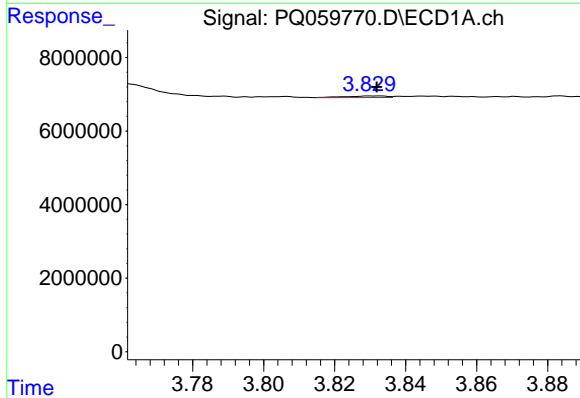
R.T.: 3.762 min
 Delta R.T.: 0.000 min
 Response: 3994059
 Conc: 38.25 ng/ml

Instrument :
 ECD_Q
 ClientSampleId :



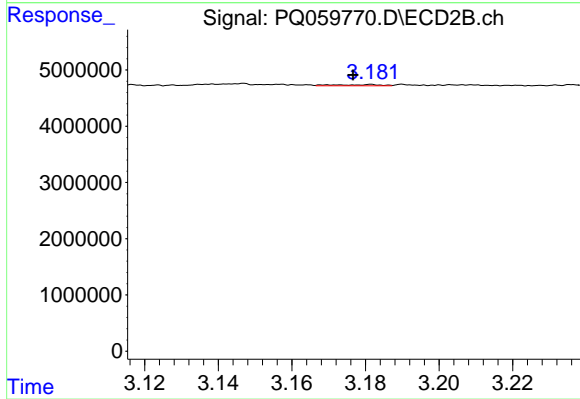
#9 AR-1221-2

R.T.: 3.099 min
 Delta R.T.: -0.008 min
 Response: 2192819
 Conc: 29.97 ng/ml



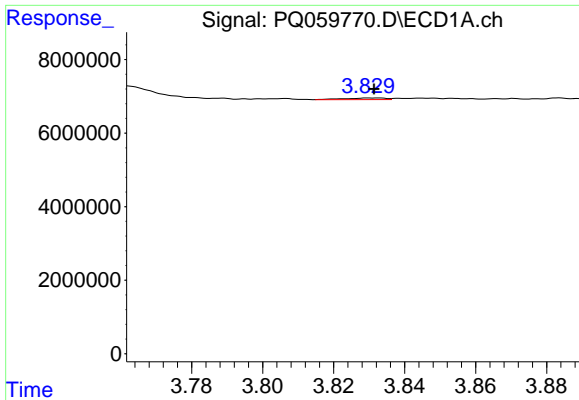
#10 AR-1221-3

R.T.: 3.833 min
 Delta R.T.: 0.001 min
 Response: 355966
 Conc: 1.14 ng/ml



#10 AR-1221-3

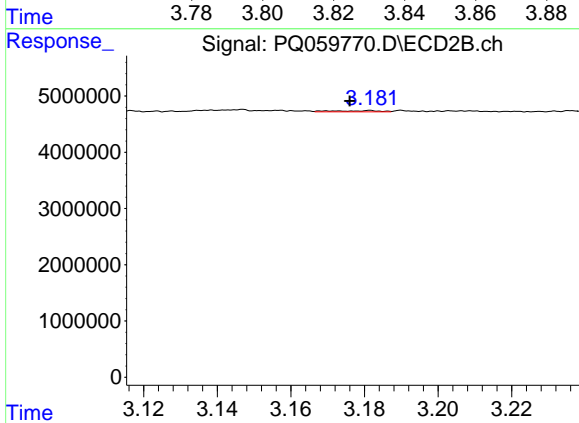
R.T.: 3.182 min
 Delta R.T.: 0.005 min
 Response: 167115
 Conc: 0.74 ng/ml



#11 AR-1232-1

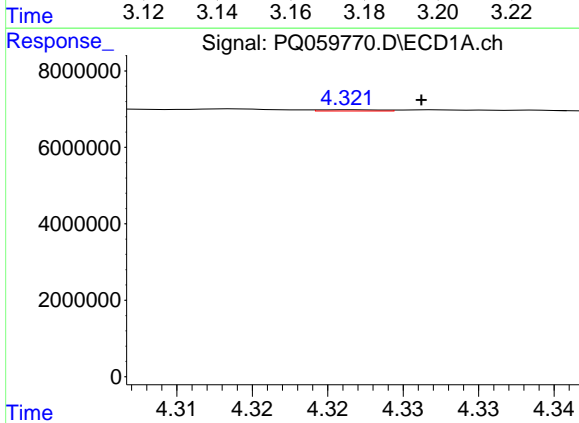
R.T.: 3.833 min
 Delta R.T.: 0.002 min
 Response: 355966
 Conc: 1.46 ng/ml

Instrument :
 ECD_Q
 ClientSampleId :



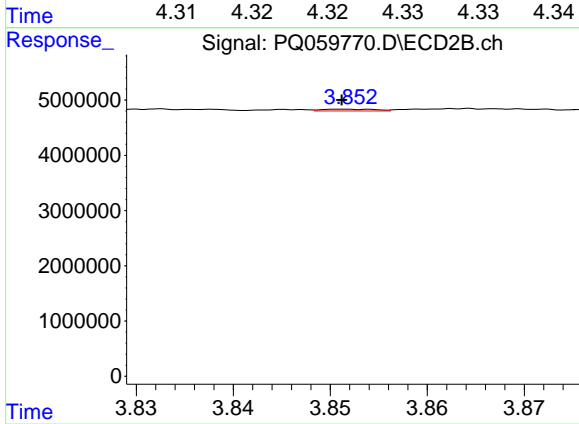
#11 AR-1232-1

R.T.: 3.182 min
 Delta R.T.: 0.006 min
 Response: 167115
 Conc: 0.95 ng/ml



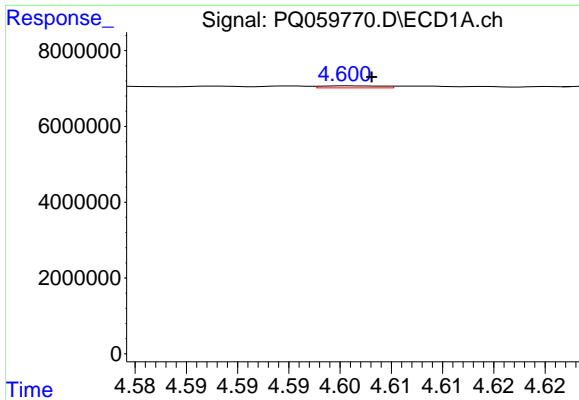
#12 AR-1232-2

R.T.: 4.321 min
 Delta R.T.: -0.005 min
 Response: 85145
 Conc: 0.56 ng/ml



#12 AR-1232-2

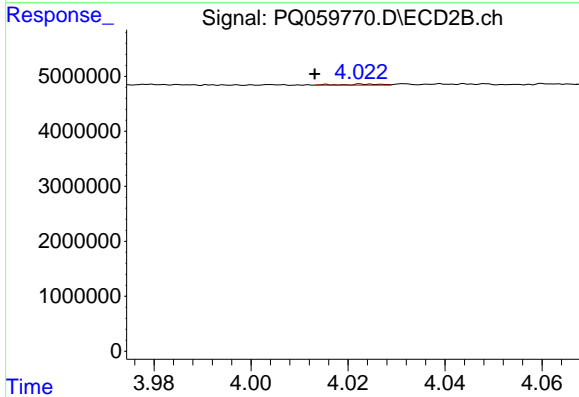
R.T.: 3.854 min
 Delta R.T.: 0.003 min
 Response: 120419
 Conc: 0.62 ng/ml



#13 AR-1232-3

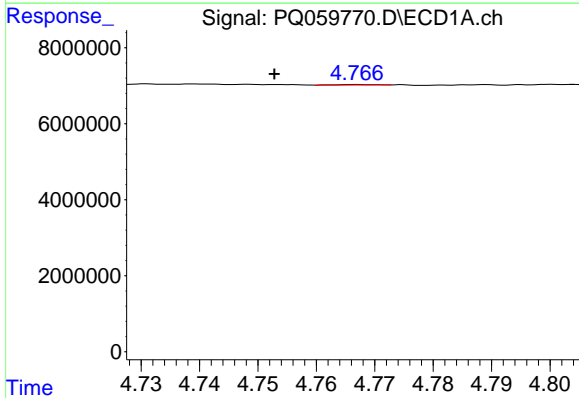
R.T.: 4.601 min
 Delta R.T.: -0.002 min
 Response: 228442
 Conc: 0.83 ng/ml

Instrument :
 ECD_Q
 ClientSampleId :



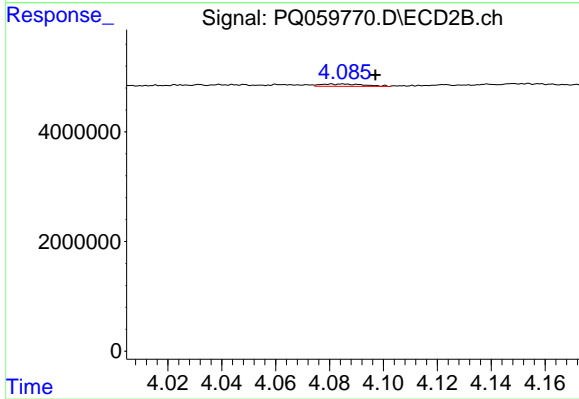
#13 AR-1232-3

R.T.: 4.023 min
 Delta R.T.: 0.010 min
 Response: 113197
 Conc: 1.14 ng/ml



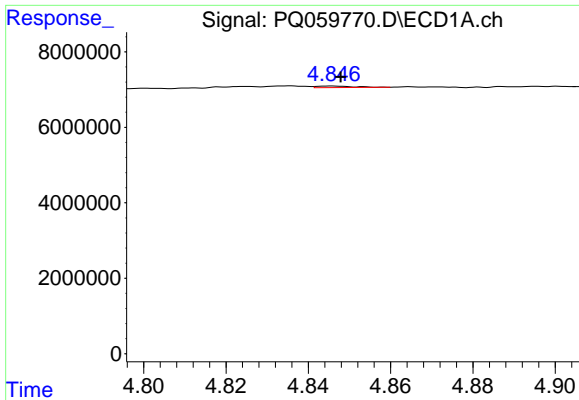
#14 AR-1232-4

R.T.: 4.767 min
 Delta R.T.: 0.014 min
 Response: 53458
 Conc: 0.38 ng/ml



#14 AR-1232-4

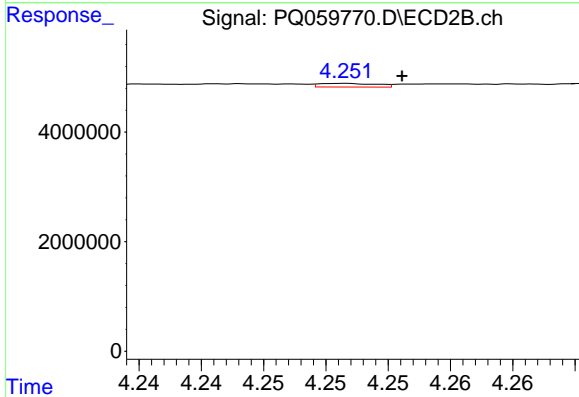
R.T.: 4.081 min
 Delta R.T.: -0.016 min
 Response: 464623
 Conc: 5.61 ng/ml



#15 AR-1232-5

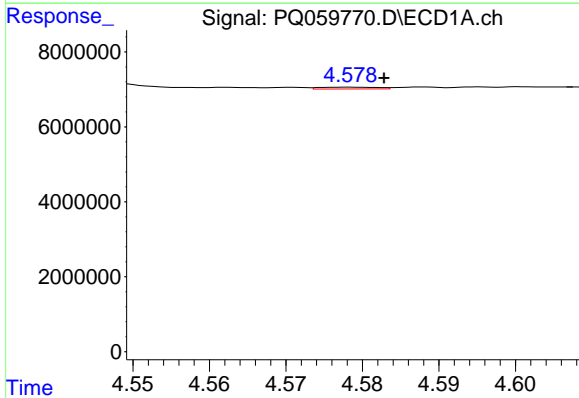
R.T.: 4.846 min
 Delta R.T.: -0.002 min
 Response: 262353
 Conc: 2.83 ng/ml

Instrument :
 ECD_Q
 ClientSampleId :



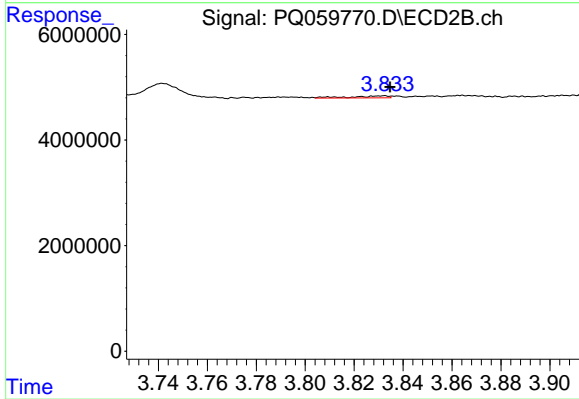
#15 AR-1232-5

R.T.: 4.251 min
 Delta R.T.: -0.005 min
 Response: 210506
 Conc: 2.10 ng/ml



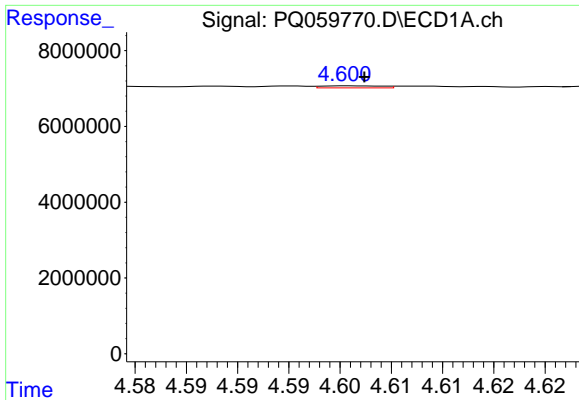
#16 AR-1242-1

R.T.: 4.578 min
 Delta R.T.: -0.005 min
 Response: 252198
 Conc: 0.82 ng/ml



#16 AR-1242-1

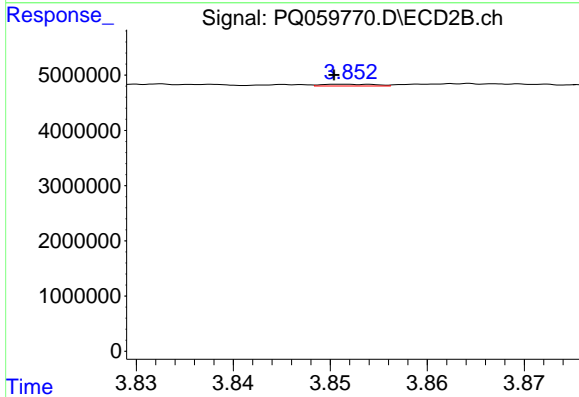
R.T.: 3.833 min
 Delta R.T.: -0.002 min
 Response: 413578
 Conc: 1.92 ng/ml



#17 AR-1242-2

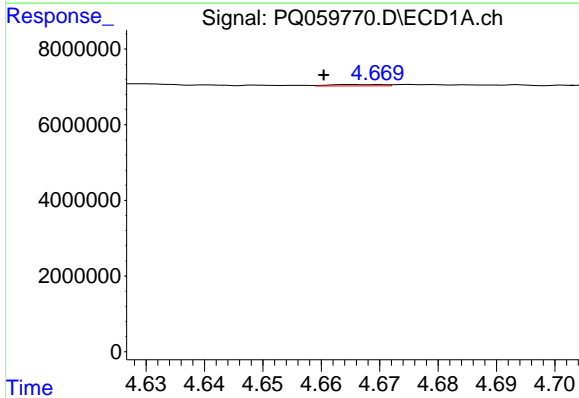
R.T.: 4.601 min
 Delta R.T.: -0.002 min
 Response: 228442
 Conc: 0.51 ng/ml

Instrument :
 ECD_Q
 ClientSampleId :



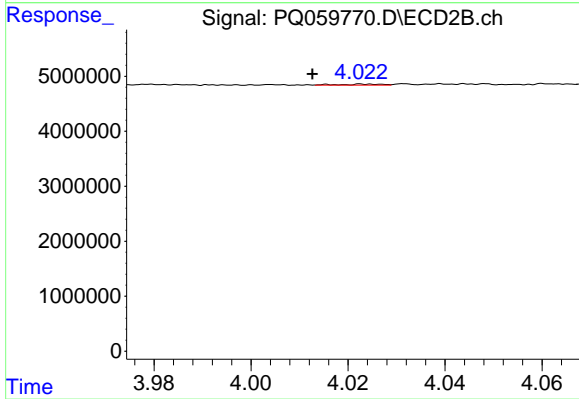
#17 AR-1242-2

R.T.: 3.854 min
 Delta R.T.: 0.003 min
 Response: 120419
 Conc: 0.38 ng/ml



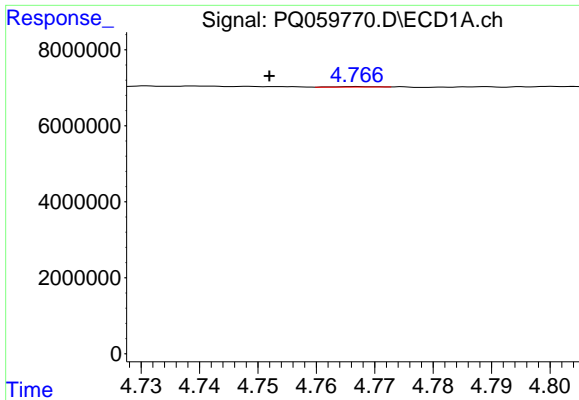
#18 AR-1242-3

R.T.: 4.665 min
 Delta R.T.: 0.005 min
 Response: 229448
 Conc: 0.83 ng/ml



#18 AR-1242-3

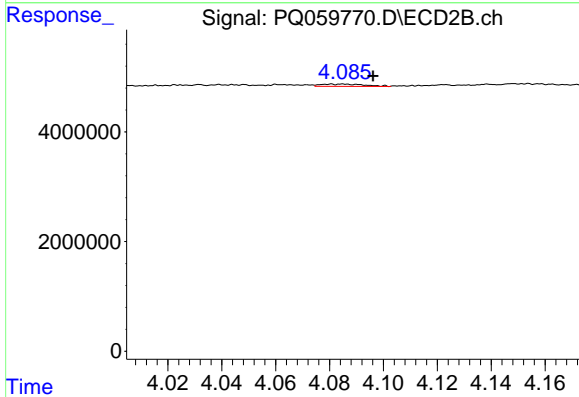
R.T.: 4.023 min
 Delta R.T.: 0.010 min
 Response: 113197
 Conc: 0.68 ng/ml



#19 AR-1242-4

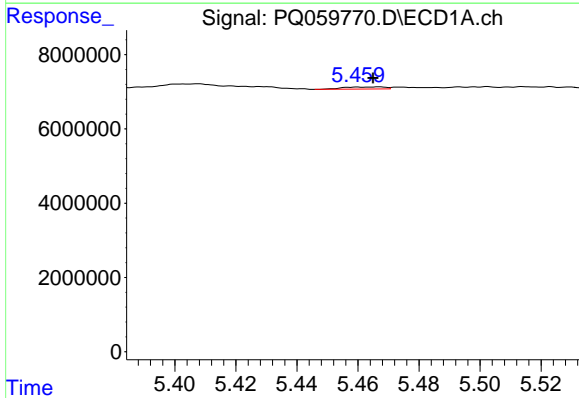
R.T.: 4.767 min
 Delta R.T.: 0.015 min
 Response: 53458
 Conc: 0.23 ng/ml

Instrument :
 ECD_Q
 ClientSampleId :



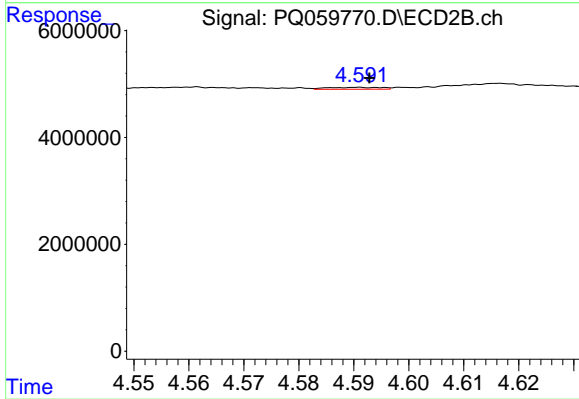
#19 AR-1242-4

R.T.: 4.081 min
 Delta R.T.: -0.015 min
 Response: 464623
 Conc: 3.06 ng/ml



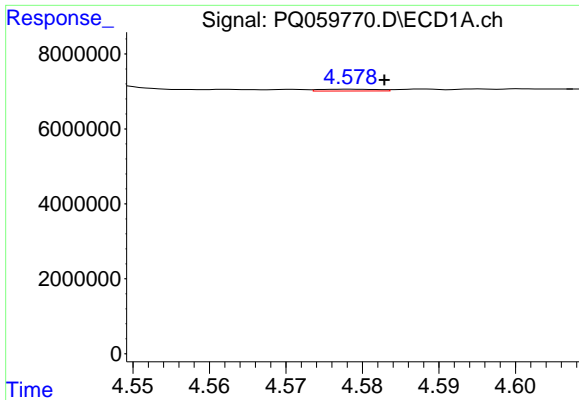
#20 AR-1242-5

R.T.: 5.467 min
 Delta R.T.: 0.002 min
 Response: 518791
 Conc: 2.12 ng/ml



#20 AR-1242-5

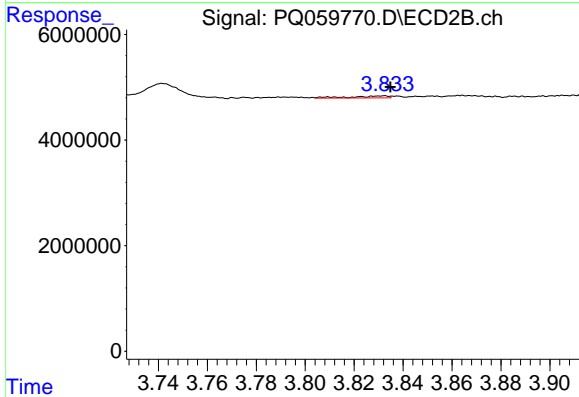
R.T.: 4.591 min
 Delta R.T.: -0.002 min
 Response: 242251
 Conc: 1.14 ng/ml



#21 AR-1248-1

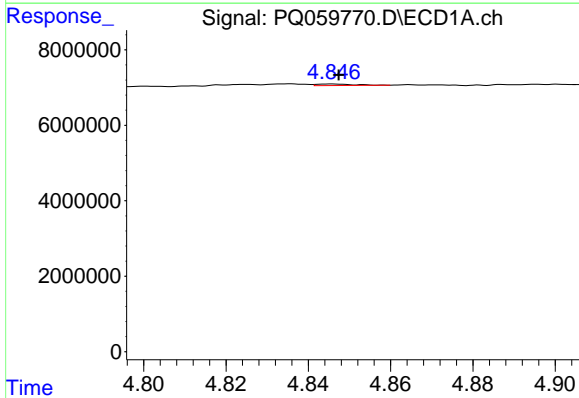
R.T.: 4.578 min
 Delta R.T.: -0.005 min
 Response: 252198
 Conc: 1.04 ng/ml

Instrument :
 ECD_Q
 ClientSampleId :



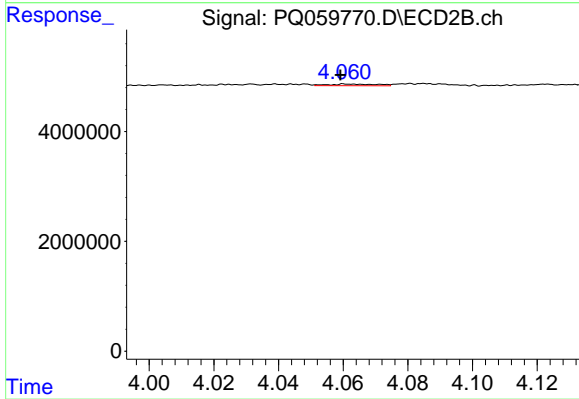
#21 AR-1248-1

R.T.: 3.833 min
 Delta R.T.: -0.002 min
 Response: 413578
 Conc: 2.47 ng/ml



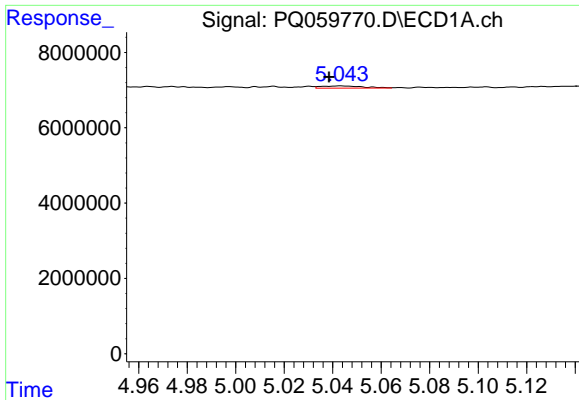
#22 AR-1248-2

R.T.: 4.846 min
 Delta R.T.: -0.002 min
 Response: 262353
 Conc: 0.91 ng/ml



#22 AR-1248-2

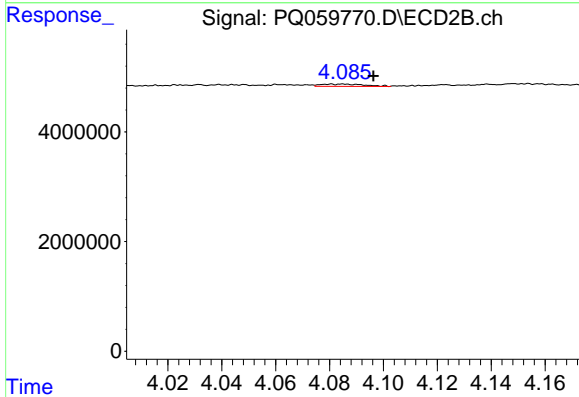
R.T.: 4.060 min
 Delta R.T.: 0.001 min
 Response: 315698
 Conc: 1.41 ng/ml



#23 AR-1248-3

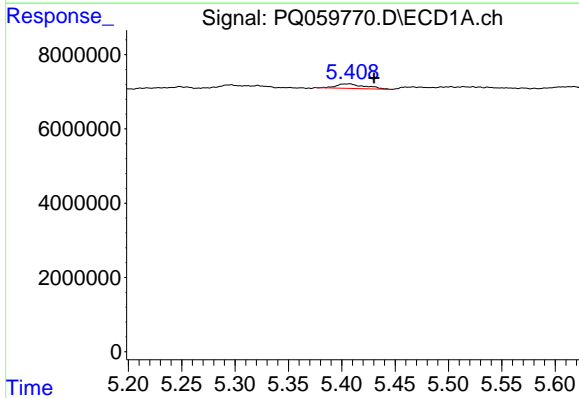
R.T.: 5.043 min
 Delta R.T.: 0.005 min
 Response: 703040
 Conc: 1.86 ng/ml

Instrument :
 ECD_Q
 ClientSampleId :



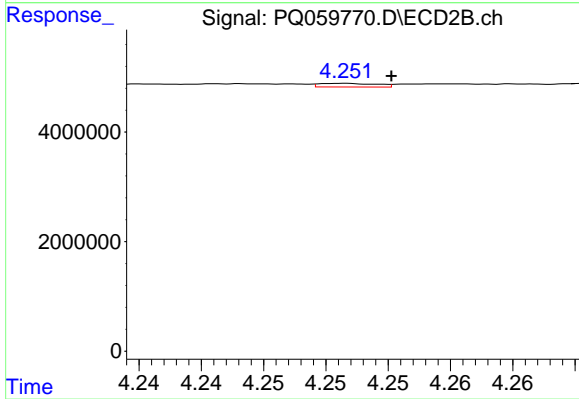
#23 AR-1248-3

R.T.: 4.081 min
 Delta R.T.: -0.016 min
 Response: 464623
 Conc: 2.13 ng/ml



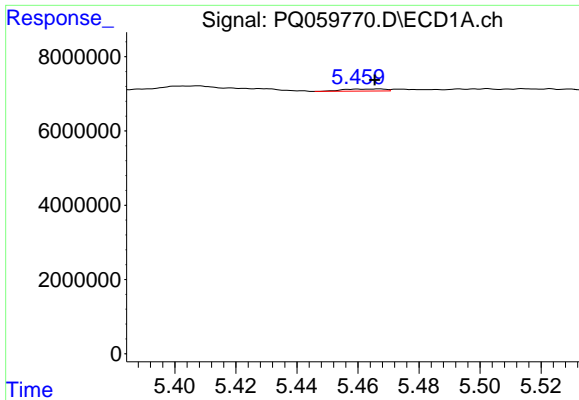
#24 AR-1248-4

R.T.: 5.408 min
 Delta R.T.: -0.023 min
 Response: 2230803
 Conc: 5.33 ng/ml



#24 AR-1248-4

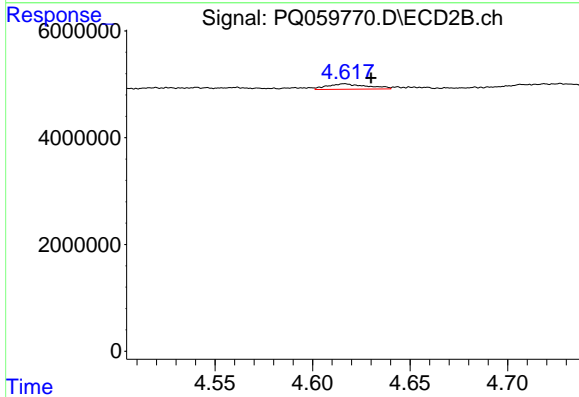
R.T.: 4.251 min
 Delta R.T.: -0.004 min
 Response: 210506
 Conc: 0.75 ng/ml



#25 AR-1248-5

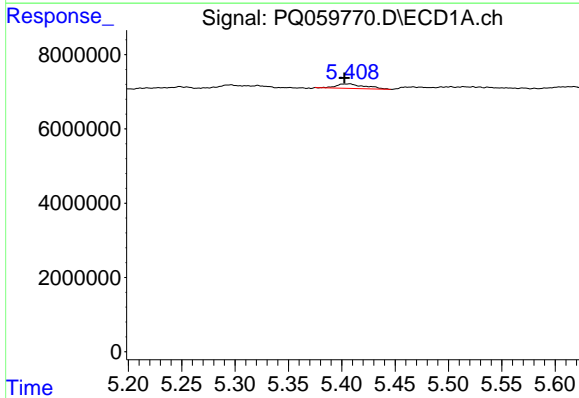
R.T.: 5.467 min
 Delta R.T.: 0.002 min
 Response: 518791
 Conc: 1.27 ng/ml

Instrument :
 ECD_Q
 ClientSampleId :



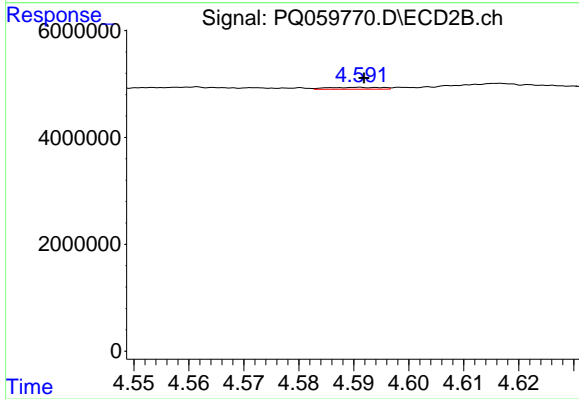
#25 AR-1248-5

R.T.: 4.616 min
 Delta R.T.: -0.013 min
 Response: 1412136
 Conc: 5.18 ng/ml



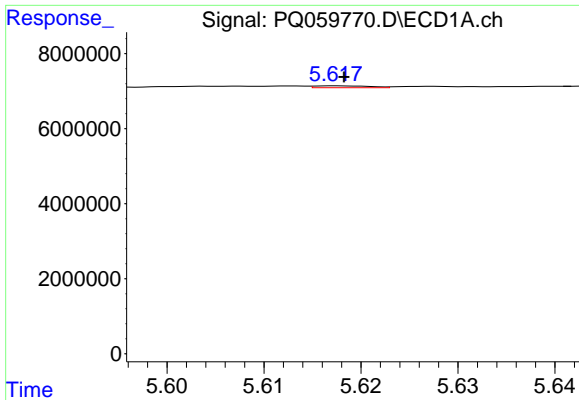
#26 AR-1254-1

R.T.: 5.408 min
 Delta R.T.: 0.005 min
 Response: 2230803
 Conc: 4.99 ng/ml



#26 AR-1254-1

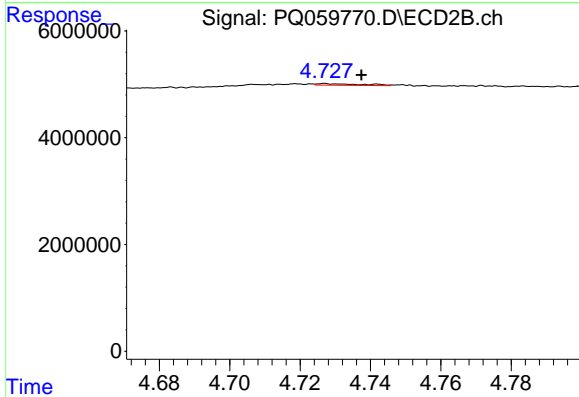
R.T.: 4.591 min
 Delta R.T.: 0.000 min
 Response: 242251
 Conc: 0.55 ng/ml



#27 AR-1254-2

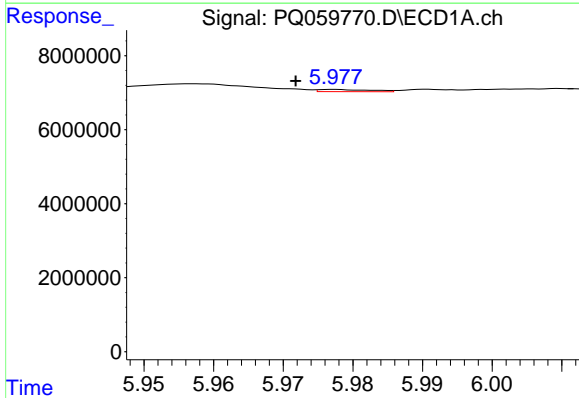
R.T.: 5.618 min
 Delta R.T.: 0.000 min
 Response: 202682
 Conc: 0.29 ng/ml

Instrument :
 ECD_Q
 ClientSampleId :



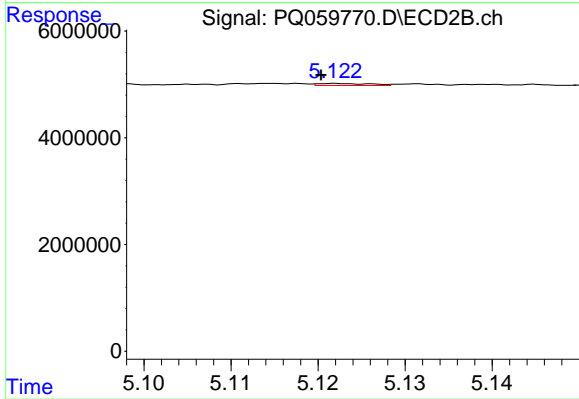
#27 AR-1254-2

R.T.: 4.727 min
 Delta R.T.: -0.010 min
 Response: 283731
 Conc: 0.73 ng/ml



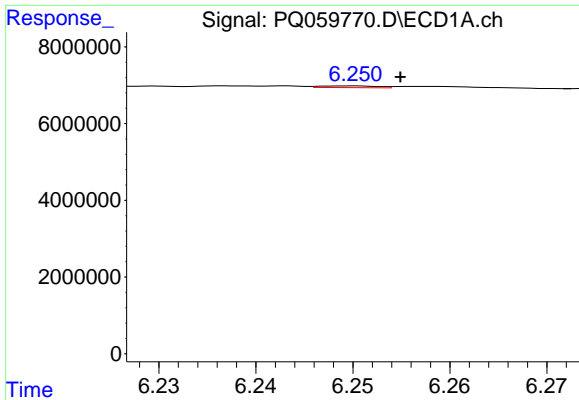
#28 AR-1254-3

R.T.: 5.977 min
 Delta R.T.: 0.006 min
 Response: 310604
 Conc: 0.43 ng/ml



#28 AR-1254-3

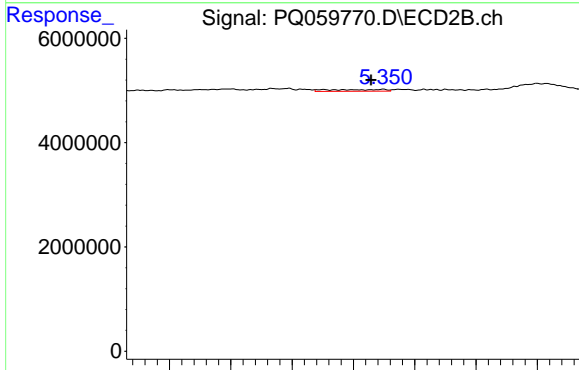
R.T.: 5.122 min
 Delta R.T.: 0.002 min
 Response: 161481
 Conc: 0.27 ng/ml



#29 AR-1254-4

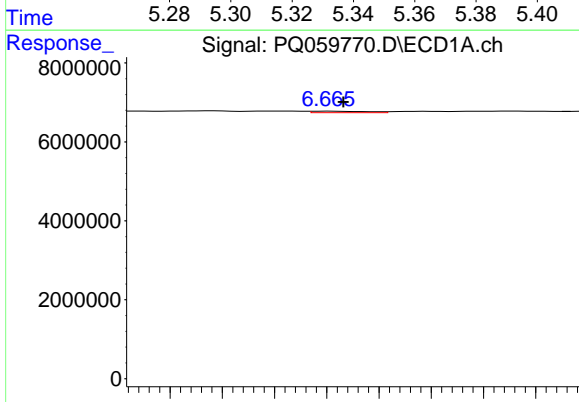
R.T.: 6.250 min
 Delta R.T.: -0.005 min
 Response: 179224
 Conc: 0.35 ng/ml

Instrument :
 ECD_Q
 ClientSampleId :



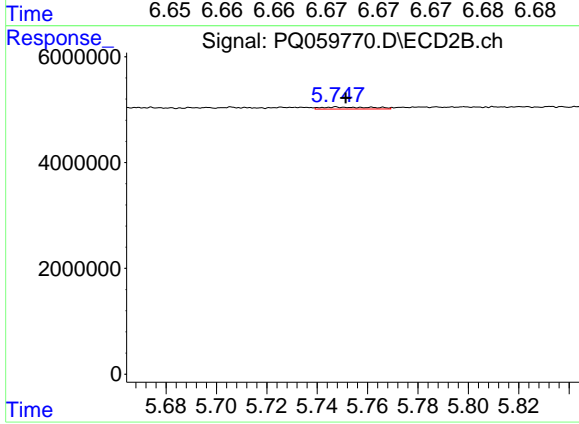
#29 AR-1254-4

R.T.: 5.350 min
 Delta R.T.: 0.004 min
 Response: 422857
 Conc: 1.04 ng/ml



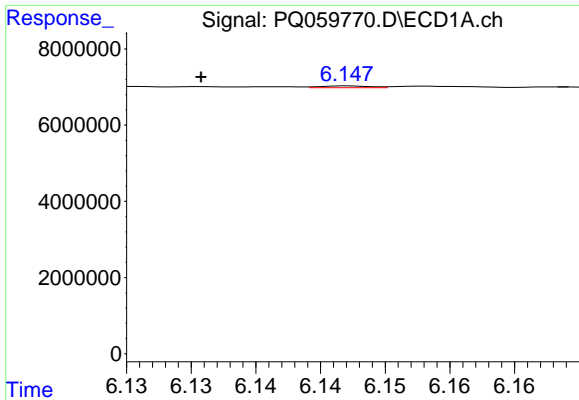
#30 AR-1254-5

R.T.: 6.665 min
 Delta R.T.: -0.002 min
 Response: 137625
 Conc: 0.26 ng/ml



#30 AR-1254-5

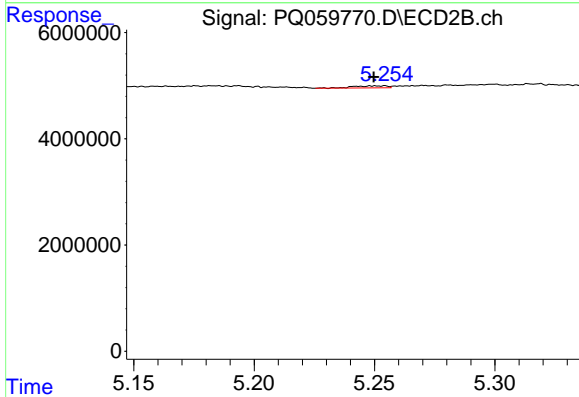
R.T.: 5.748 min
 Delta R.T.: -0.004 min
 Response: 523523
 Conc: 0.85 ng/ml



#31 AR-1260-1

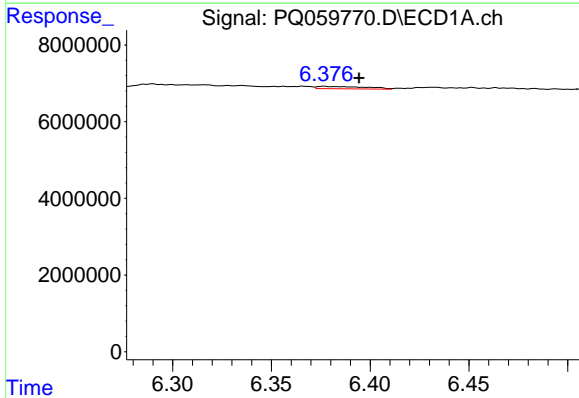
R.T.: 6.147 min
 Delta R.T.: 0.011 min
 Response: 127189
 Conc: 0.22 ng/ml

Instrument :
 ECD_Q
 ClientSampleId :



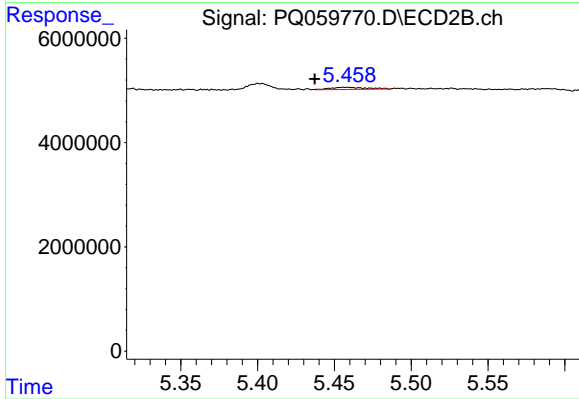
#31 AR-1260-1

R.T.: 5.254 min
 Delta R.T.: 0.005 min
 Response: 374343
 Conc: 0.82 ng/ml



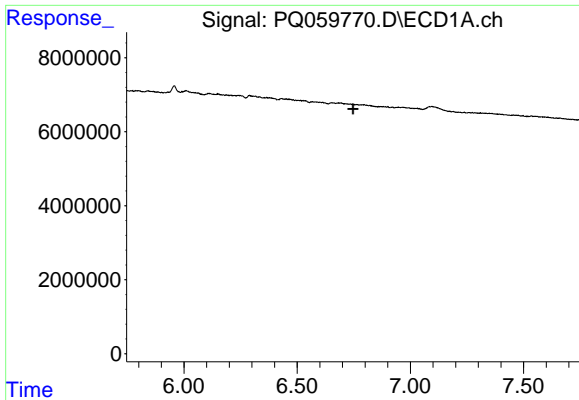
#32 AR-1260-2

R.T.: 6.377 min
 Delta R.T.: -0.018 min
 Response: 1041317
 Conc: 1.64 ng/ml



#32 AR-1260-2

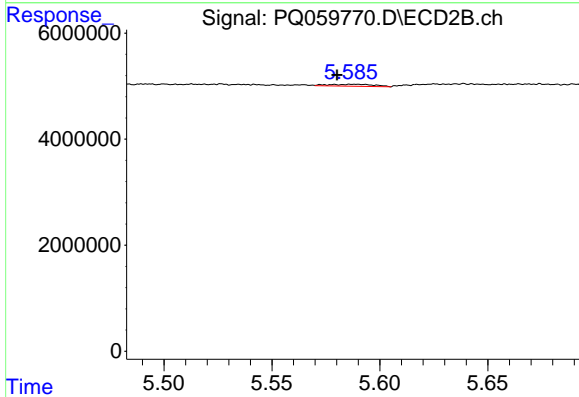
R.T.: 5.458 min
 Delta R.T.: 0.021 min
 Response: 709795
 Conc: 1.27 ng/ml



#33 AR-1260-3

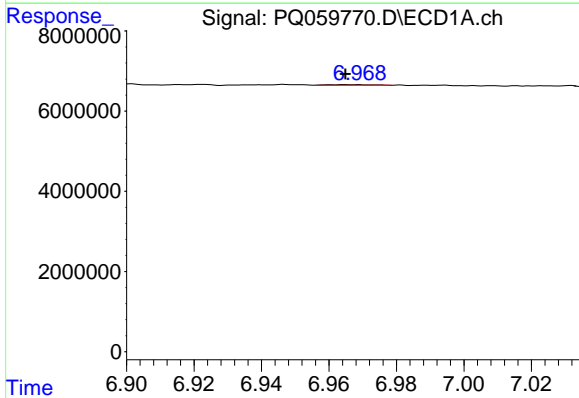
R.T.: 0.000 min
 Exp R.T.: 6.747 min
 Response: 0
 Conc: N.D.

Instrument :
 ECD_Q
 ClientSampleId :



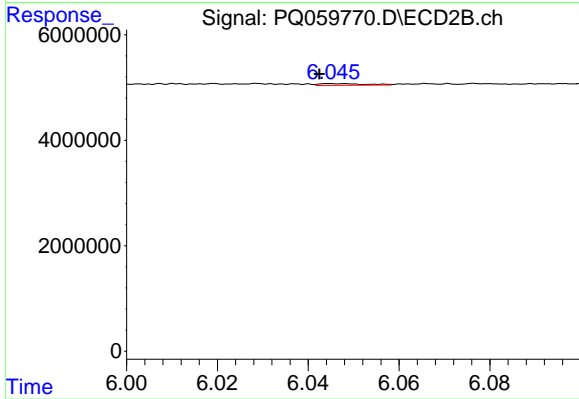
#33 AR-1260-3

R.T.: 5.588 min
 Delta R.T.: 0.008 min
 Response: 540317
 Conc: 1.02 ng/ml



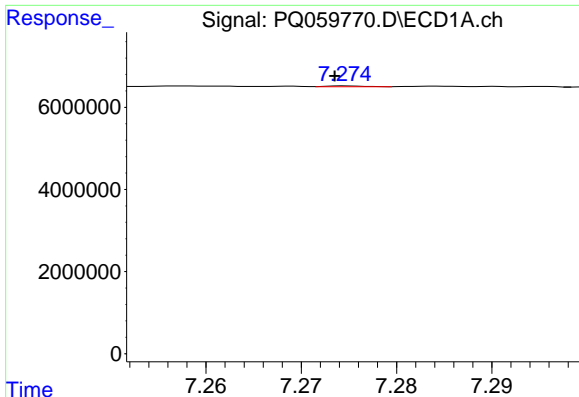
#34 AR-1260-4

R.T.: 6.969 min
 Delta R.T.: 0.004 min
 Response: 154322
 Conc: 0.37 ng/ml



#34 AR-1260-4

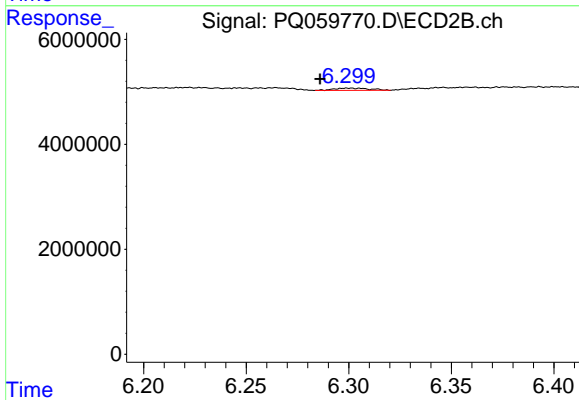
R.T.: 6.046 min
 Delta R.T.: 0.003 min
 Response: 226268
 Conc: 0.57 ng/ml



#35 AR-1260-5

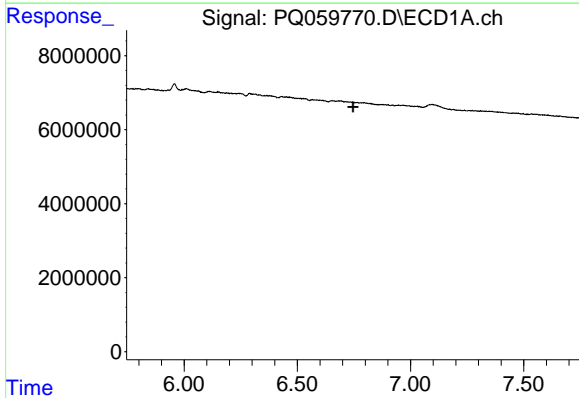
R.T.: 7.275 min
 Delta R.T.: 0.001 min
 Response: 57488
 Conc: 0.08 ng/ml

Instrument :
 ECD_Q
 ClientSampleId :



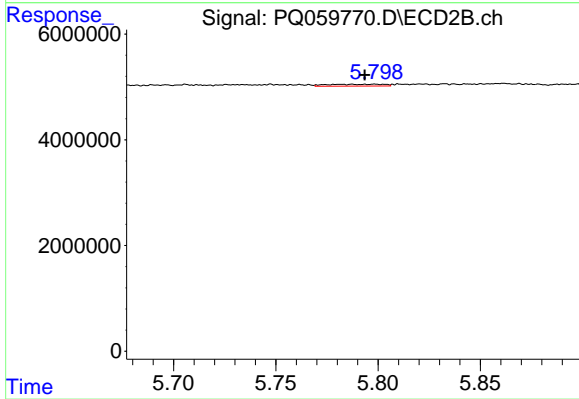
#35 AR-1260-5

R.T.: 6.305 min
 Delta R.T.: 0.019 min
 Response: 507411
 Conc: 0.52 ng/ml



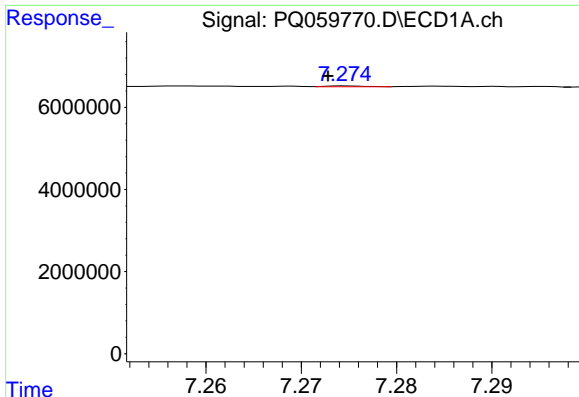
#36 AR-1262-1

R.T.: 0.000 min
 Exp R.T. : 6.746 min
 Response: 0
 Conc: N.D.



#36 AR-1262-1

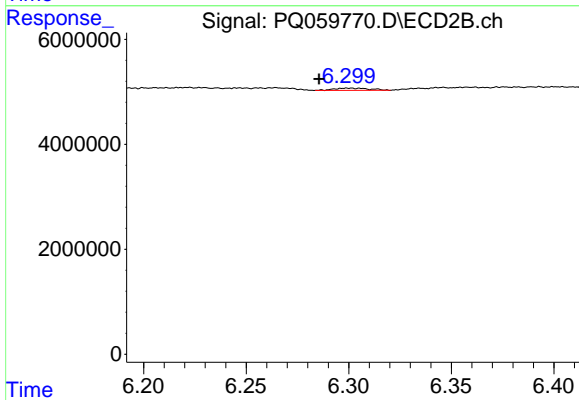
R.T.: 5.798 min
 Delta R.T.: 0.005 min
 Response: 651261
 Conc: 1.09 ng/ml



#37 AR-1262-2

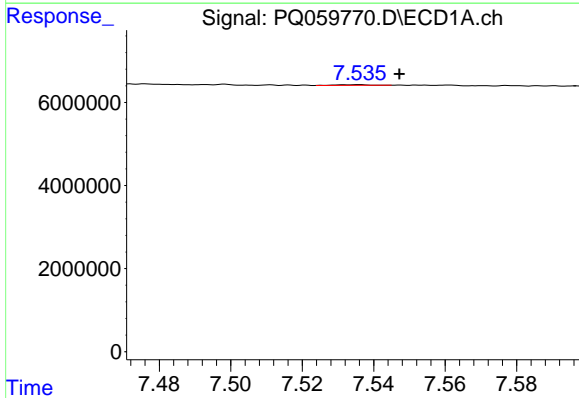
R.T.: 7.275 min
 Delta R.T.: 0.002 min
 Response: 57488
 Conc: 0.06 ng/ml

Instrument :
 ECD_Q
 ClientSampleId :



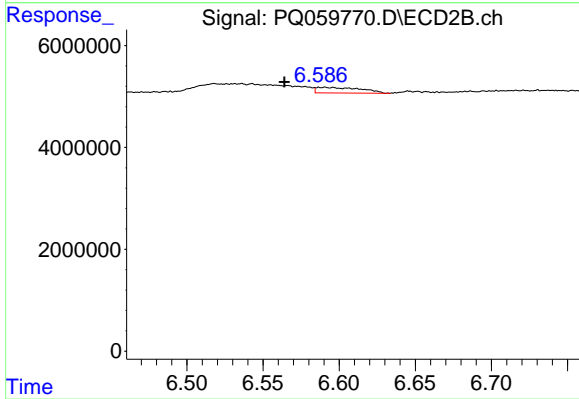
#37 AR-1262-2

R.T.: 6.305 min
 Delta R.T.: 0.020 min
 Response: 507411
 Conc: 0.45 ng/ml



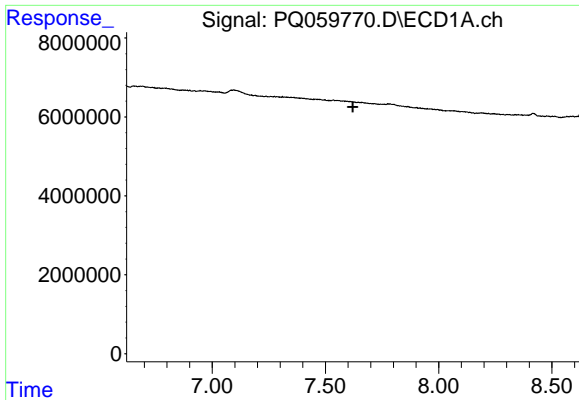
#38 AR-1262-3

R.T.: 7.536 min
 Delta R.T.: -0.011 min
 Response: 98720
 Conc: 0.18 ng/ml



#38 AR-1262-3

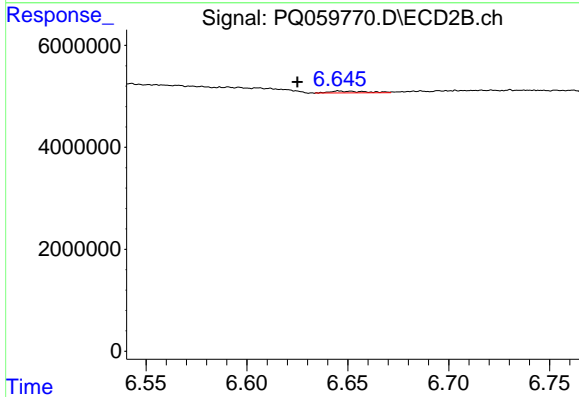
R.T.: 6.590 min
 Delta R.T.: 0.026 min
 Response: 2215150
 Conc: 5.01 ng/ml



#39 AR-1262-4

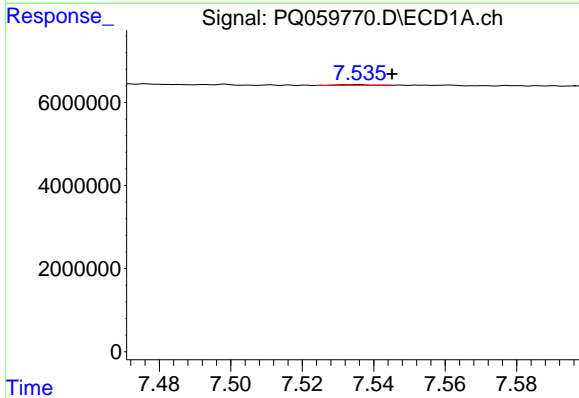
R.T.: 0.000 min
 Exp R.T.: 7.621 min
 Response: 0
 Conc: N.D.

Instrument :
 ECD_Q
 ClientSampleId :



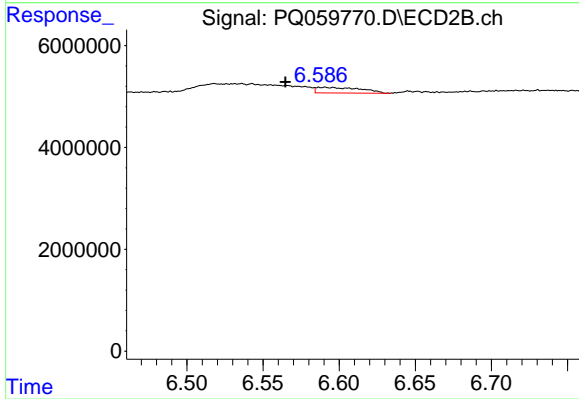
#39 AR-1262-4

R.T.: 6.646 min
 Delta R.T.: 0.021 min
 Response: 453511
 Conc: 0.54 ng/ml



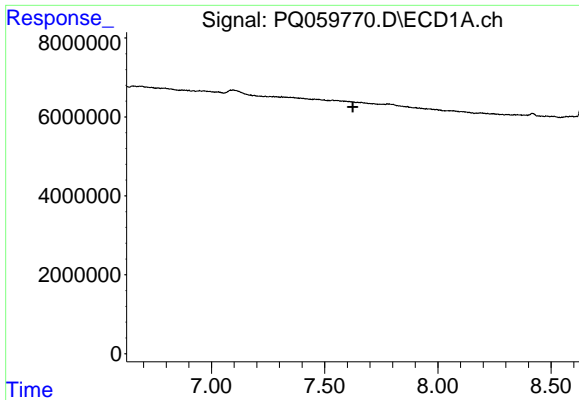
#41 AR-1268-1

R.T.: 7.536 min
 Delta R.T.: -0.009 min
 Response: 98720
 Conc: 0.10 ng/ml



#41 AR-1268-1

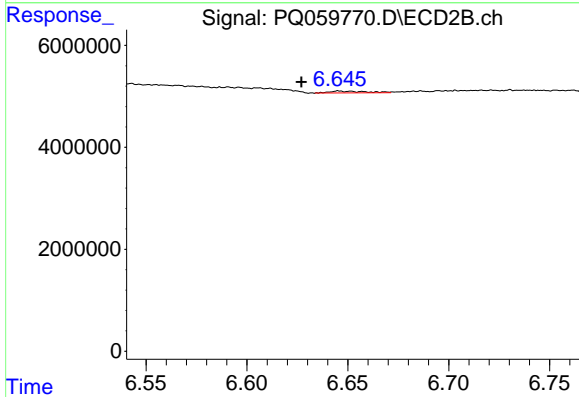
R.T.: 6.590 min
 Delta R.T.: 0.026 min
 Response: 2215150
 Conc: 1.66 ng/ml



#42 AR-1268-2

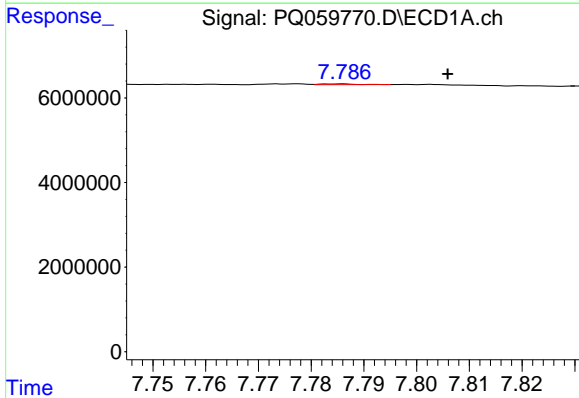
R.T.: 0.000 min
 Exp R.T.: 7.624 min
 Response: 0
 Conc: N.D.

Instrument :
 ECD_Q
 ClientSampleId :



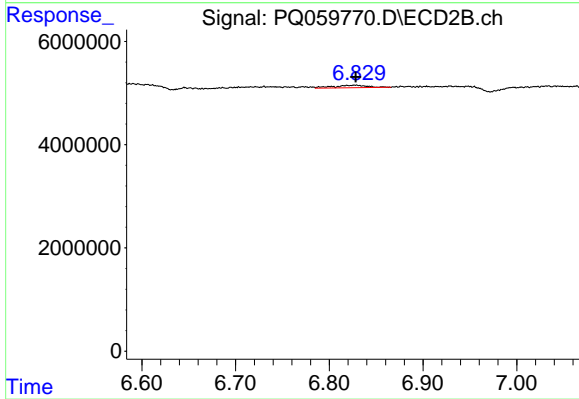
#42 AR-1268-2

R.T.: 6.646 min
 Delta R.T.: 0.019 min
 Response: 453511
 Conc: 0.37 ng/ml



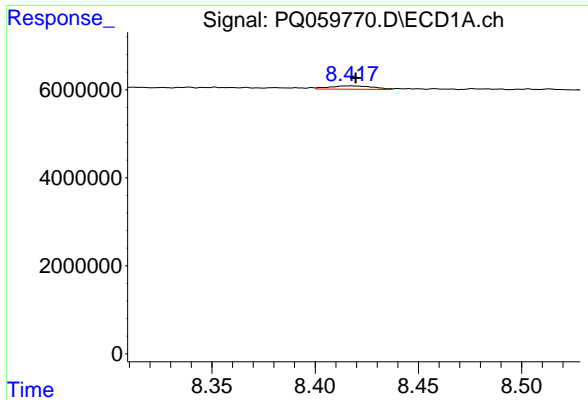
#43 AR-1268-3

R.T.: 7.786 min
 Delta R.T.: -0.020 min
 Response: 75433
 Conc: 0.11 ng/ml



#43 AR-1268-3

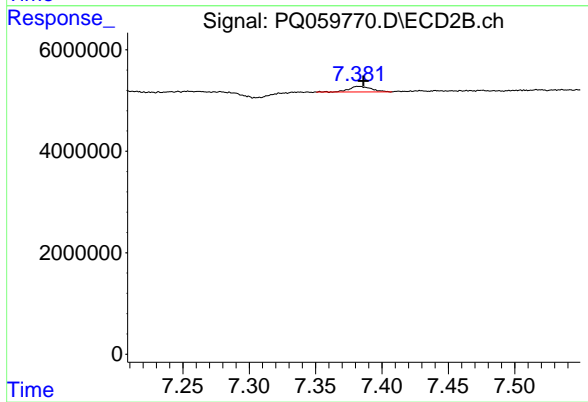
R.T.: 6.828 min
 Delta R.T.: 0.000 min
 Response: 1201589
 Conc: 1.14 ng/ml



#45 AR-1268-5

R.T.: 8.417 min
Delta R.T.: -0.002 min
Response: 1132232
Conc: 0.56 ng/ml

Instrument :
ECD_Q
ClientSampleId :



#45 AR-1268-5

R.T.: 7.383 min
Delta R.T.: -0.003 min
Response: 1299989
Conc: 0.38 ng/ml