

Data Path : Z:\pestpcbsrv\HPCHEM1\ECD_Q\Data\PQ102222\
 Data File : PQ059780.D
 Signal(s) : Signal #1: ECD1A.ch Signal #2: ECD2B.ch
 Acq On : 22 Oct 2022 00:57
 Operator : YP\AJ
 Sample : I.BLK
 Misc :
 ALS Vial : 2 Sample Multiplier: 1

Instrument :
 ECD_Q
 ClientSampleId :

Integration File signal 1: autoint1.e
 Integration File signal 2: autoint2.e
 Quant Time: Oct 22 13:22:42 2022
 Quant Method : Z:\pestpcbsrv\HPCHEM1\ECD_Q\Method\PQ102122.M
 Quant Title : GC EXTRACTABLES
 QLast Update : Fri Oct 21 08:02:10 2022
 Response via : Initial Calibration
 Integrator: ChemStation

Volume Inj. : 2 µl
 Signal #1 Phase : ZB-MR1 Signal #2 Phase: ZB-MR2
 Signal #1 Info : 30Mx0.32mmx 0.50µ Signal #2 Info : 30M x 0.32mm x 0.25µm

Compound	RT#1	RT#2	Resp#1	Resp#2	ng/ml	ng/ml
System Monitoring Compounds						
1) SA Tetrachlo...	3.482	2.828	224.0E6	164.5E6	19.805	20.634
2) SA Decachlor...	8.651	7.600	115.6E6	177.4E6	21.150	21.112
Target Compounds						
3) L1 AR-1016-1	4.580	3.831	505656	234827	1.203	0.823 #
4) L1 AR-1016-2	4.600	3.864	639380	2786680	1.039	6.566 #
5) L1 AR-1016-3	4.670	4.013	4188222	484850	11.229	2.201 #
6) L1 AR-1016-4	4.752	4.061	421518	303574	1.377	1.775 #
7) L1 AR-1016-5	5.039	4.259	631499	4729324	2.041	21.071 #
8) L2 AR-1221-1	3.695	3.035	137988	240475	0.988	2.455 #
9) L2 AR-1221-2	3.762	3.100	3724233	2827332	35.670	38.647
10) L2 AR-1221-3	3.831	3.179	714079	465781	2.296	2.069
11) L3 AR-1232-1	3.831	3.179	714079	465781	2.924	2.661
12) L3 AR-1232-2	4.334	3.864	136157	2786680	0.892	14.459 #
13) L3 AR-1232-3	4.600	4.013	639380	484850	2.311	4.882 #
14) L3 AR-1232-4	4.752	4.079f	421518	2919307	2.958	35.234 #
15) L3 AR-1232-5	4.837	4.259	1530469	4729324	16.495	47.291 #
16) L4 AR-1242-1	4.580	3.831	505656	234827	1.641	1.091 #
17) L4 AR-1242-2	4.600	3.864	639380	2786680	1.428	8.798 #
18) L4 AR-1242-3	4.670	4.013	4188222	484850	15.157	2.923 #
19) L4 AR-1242-4	4.752	4.079f	421518	2919307	1.840	19.243 #
20) L4 AR-1242-5	5.469	4.588	4385019	1066868	17.947	5.002 #
21) L5 AR-1248-1	4.580	3.831	505656	234827	2.094	1.404 #
22) L5 AR-1248-2	4.837	4.061	1530469	303574	5.334	1.353 #
23) L5 AR-1248-3	5.039	4.079f	631499	2919307	1.670	13.402 #
24) L5 AR-1248-4	5.404f	4.259	10312714	4729324	24.638	16.874 #
25) L5 AR-1248-5	5.469	4.640	4385019	589784	10.726	2.165 #
26) L6 AR-1254-1	5.404	4.588	10312714	1066868	23.063	2.405 #
27) L6 AR-1254-2	5.617	4.732	863215	224672	1.254	0.575 #
28) L6 AR-1254-3	5.956f	5.118	6232875	1070640	8.685	1.779 #
29) L6 AR-1254-4	6.252	5.344	3956677	820792	7.807	2.018 #
30) L6 AR-1254-5	6.661	5.751	3852508	818174	7.269	1.324 #
31) L7 AR-1260-1	6.132	5.251	5262435	311844	9.280	0.687 #
32) L7 AR-1260-2	6.390	5.440	5910562	67802	9.327	0.122 #
33) L7 AR-1260-3	6.732f	5.585	571665	333084	1.547	0.627 #
34) L7 AR-1260-4	6.963	6.037	1388788	419182	3.341	1.061 #
35) L7 AR-1260-5	7.276	6.300	1767943	1312274	2.376	1.340 #
36) L8 AR-1262-1	6.732	5.797	571665	1033593	0.988	1.727 #
37) L8 AR-1262-2	7.276	6.300	1767943	1312274	1.985	1.171 #
38) L8 AR-1262-3	7.549	6.536f	886287	11071716	1.605	25.016 #
39) L8 AR-1262-4	7.626	6.609f	852244	3303901	3.304	3.945
40) L8 AR-1262-5	8.125	7.121	307720	333085	1.180	0.848 #
41) L9 AR-1268-1	7.549	6.536f	886287	11071716	0.936	8.307 #

Data Path : Z:\pestpcbsrv\HPCHEM1\ECD_Q\Data\PQ102222\
 Data File : PQ059780.D
 Signal(s) : Signal #1: ECD1A.ch Signal #2: ECD2B.ch
 Acq On : 22 Oct 2022 00:57
 Operator : YP\AJ
 Sample : I.BLK
 Misc :
 ALS Vial : 2 Sample Multiplier: 1

Instrument :
 ECD_Q
 ClientSampleId :

Integration File signal 1: autoint1.e
 Integration File signal 2: autoint2.e
 Quant Time: Oct 22 13:22:42 2022
 Quant Method : Z:\pestpcbsrv\HPCHEM1\ECD_Q\Method\PQ102122.M
 Quant Title : GC EXTRACTABLES
 QLast Update : Fri Oct 21 08:02:10 2022
 Response via : Initial Calibration
 Integrator: ChemStation

Volume Inj. : 2 µl
 Signal #1 Phase : ZB-MR1 Signal #2 Phase: ZB-MR2
 Signal #1 Info : 30Mx0.32mmx 0.50µ Signal #2 Info : 30M x 0.32mm x 0.25µm

	Compound	RT#1	RT#2	Resp#1	Resp#2	ng/ml	ng/ml
42)	L9 AR-1268-2	7.626	6.609f	852244	3303901	0.998	2.707 #
43)	L9 AR-1268-3	7.785f	6.830	463747	9469182	0.670	9.012 #
44)	L9 AR-1268-4	8.125	7.121	307720	333085	1.069	0.760 #
45)	L9 AR-1268-5	8.416	7.383	845984	1164192	0.415	0.344

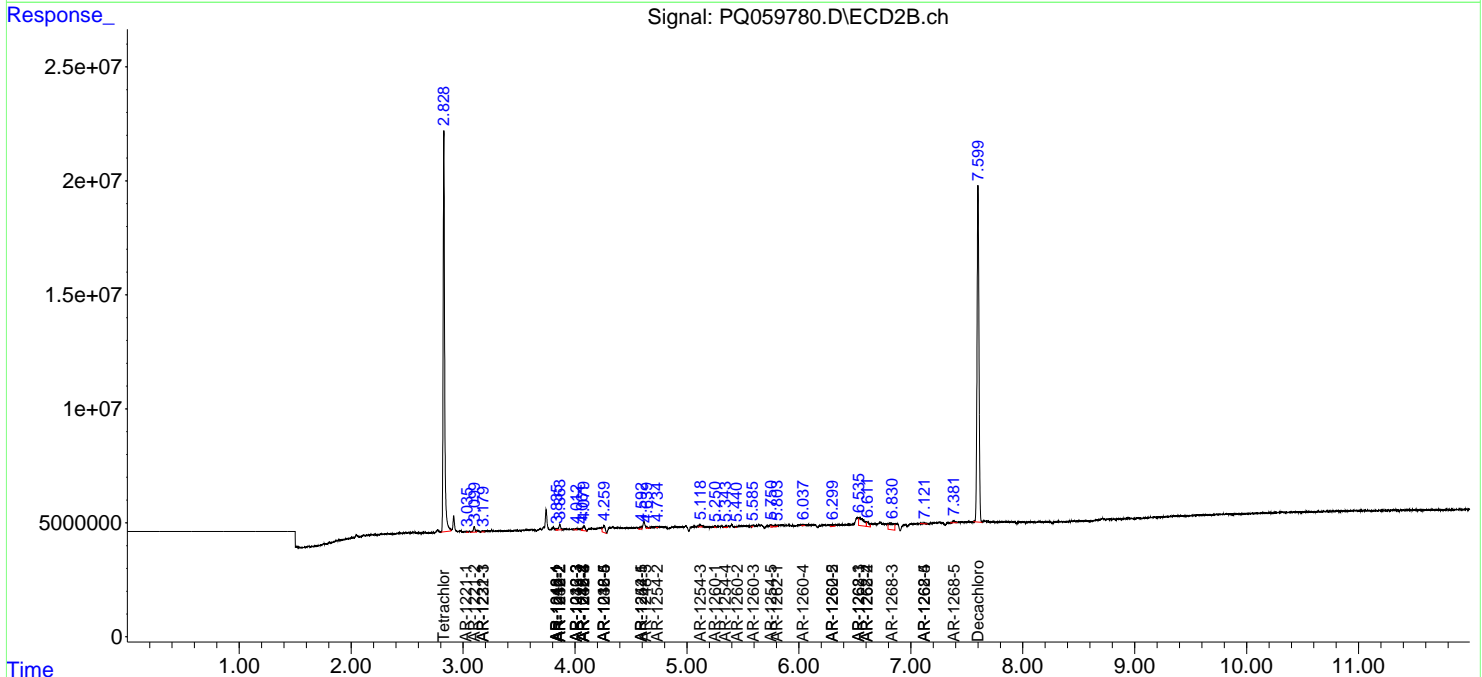
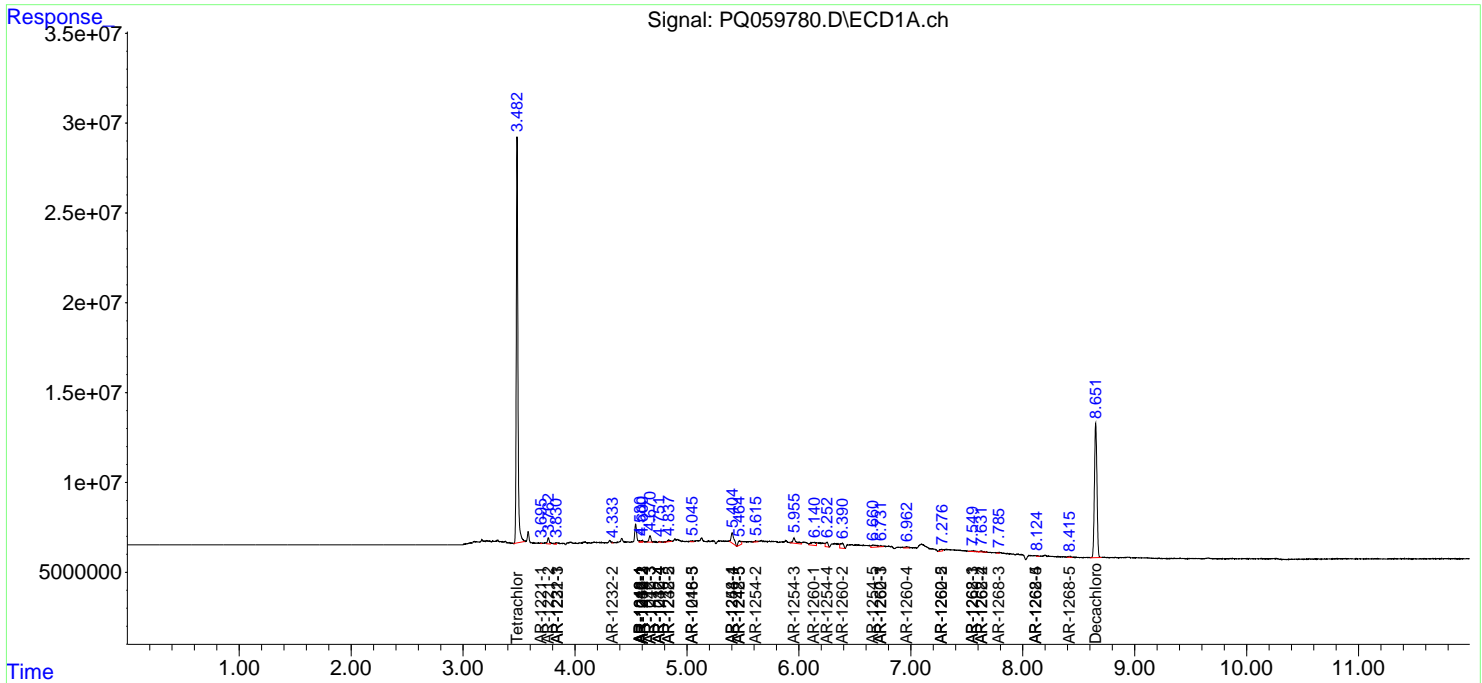
(f)=RT Delta > 1/2 Window (#)=Amounts differ by > 25% (m)=manual int.

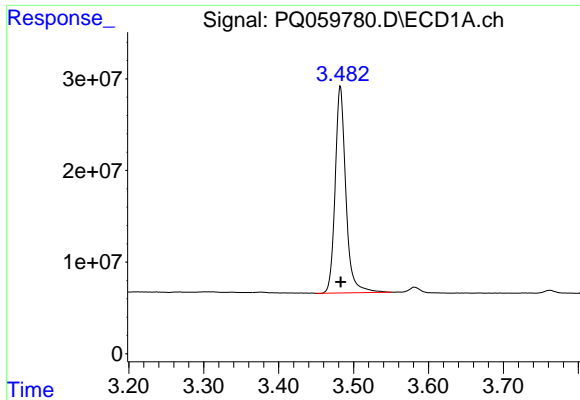
Data Path : Z:\pestpcbsrv\HPCHEM1\ECD_Q\Data\PQ102222\
 Data File : PQ059780.D
 Signal(s) : Signal #1: ECD1A.ch Signal #2: ECD2B.ch
 Acq On : 22 Oct 2022 00:57
 Operator : YP\AJ
 Sample : I.BLK
 Misc :
 ALS Vial : 2 Sample Multiplier: 1

Instrument :
 ECD_Q
 ClientSampleId :

Integration File signal 1: autoint1.e
 Integration File signal 2: autoint2.e
 Quant Time: Oct 22 13:22:42 2022
 Quant Method : Z:\pestpcbsrv\HPCHEM1\ECD_Q\Method\PQ102122.M
 Quant Title : GC EXTRACTABLES
 QLast Update : Fri Oct 21 08:02:10 2022
 Response via : Initial Calibration
 Integrator: ChemStation

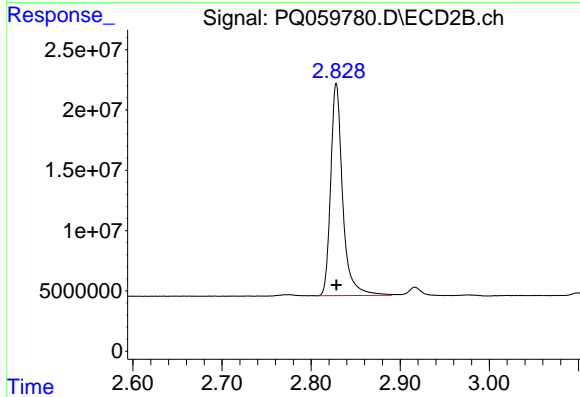
Volume Inj. : 2 µl
 Signal #1 Phase : ZB-MR1 Signal #2 Phase: ZB-MR2
 Signal #1 Info : 30Mx0.32mmx 0.50µ Signal #2 Info : 30M x 0.32mm x 0.25µm



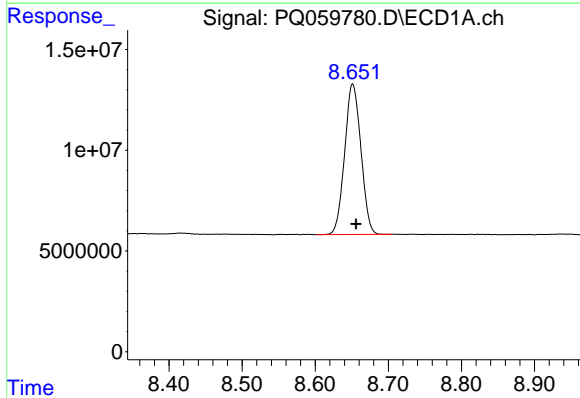


#1 Tetrachloro-m-xylene
 R.T.: 3.482 min
 Delta R.T.: 0.000 min
 Response: 223966466
 Conc: 19.81 ng/ml

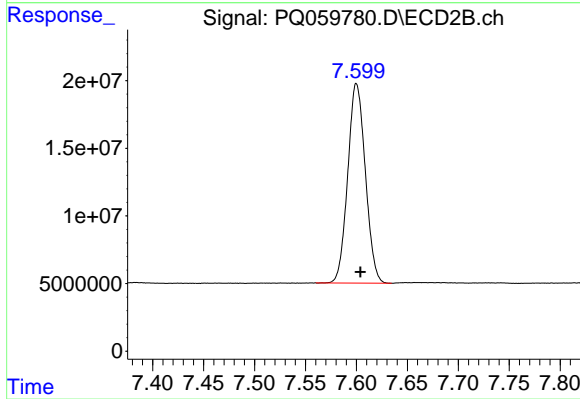
Instrument :
 ECD_Q
 ClientSampleId :



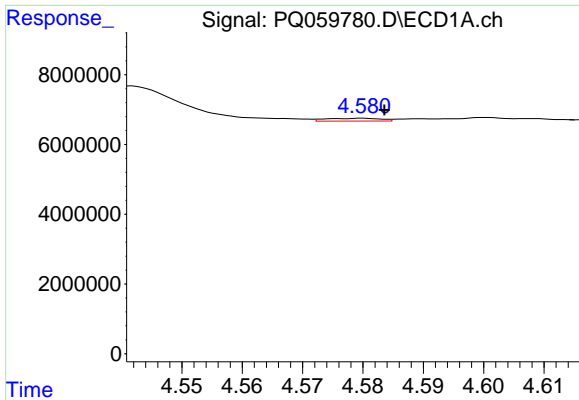
#1 Tetrachloro-m-xylene
 R.T.: 2.828 min
 Delta R.T.: 0.000 min
 Response: 164492804
 Conc: 20.63 ng/ml



#2 Decachlorobiphenyl
 R.T.: 8.651 min
 Delta R.T.: -0.005 min
 Response: 115639151
 Conc: 21.15 ng/ml



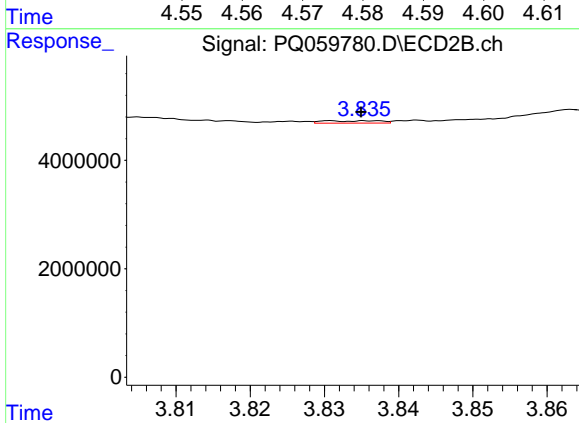
#2 Decachlorobiphenyl
 R.T.: 7.600 min
 Delta R.T.: -0.004 min
 Response: 177380864
 Conc: 21.11 ng/ml



#3 AR-1016-1

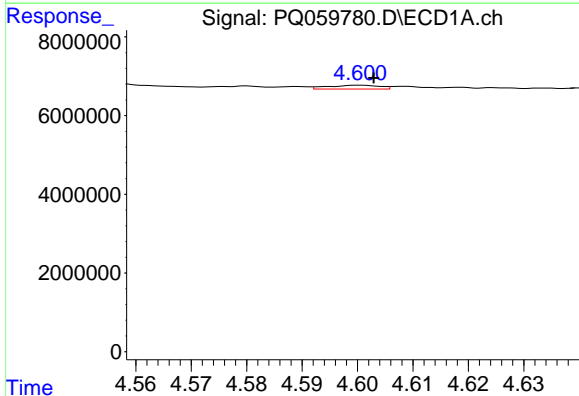
R.T.: 4.580 min
 Delta R.T.: -0.003 min
 Response: 505656
 Conc: 1.20 ng/ml

Instrument :
 ECD_Q
 ClientSampleId :



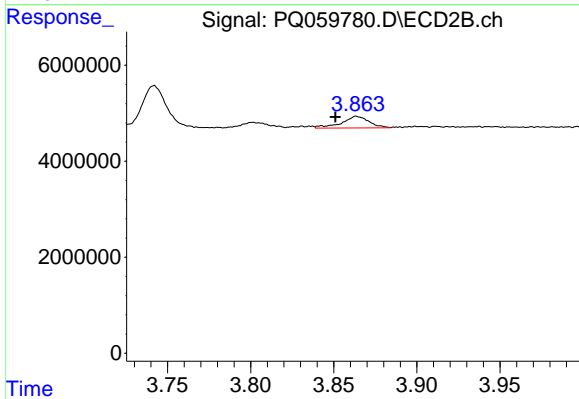
#3 AR-1016-1

R.T.: 3.831 min
 Delta R.T.: -0.004 min
 Response: 234827
 Conc: 0.82 ng/ml



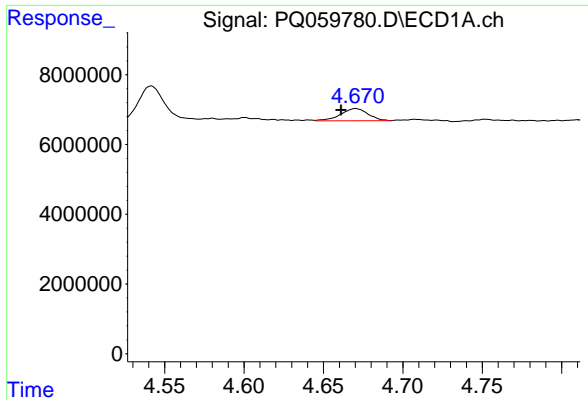
#4 AR-1016-2

R.T.: 4.600 min
 Delta R.T.: -0.002 min
 Response: 639380
 Conc: 1.04 ng/ml



#4 AR-1016-2

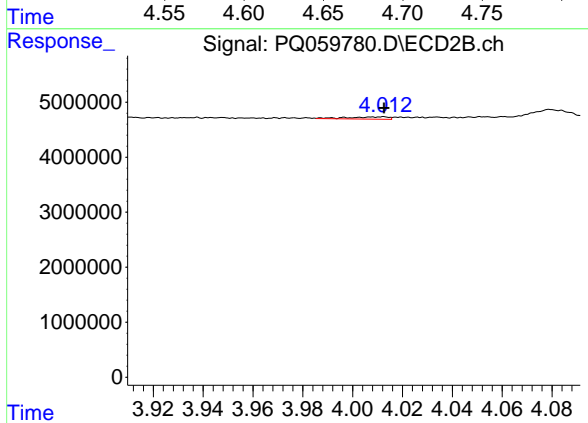
R.T.: 3.864 min
 Delta R.T.: 0.012 min
 Response: 2786680
 Conc: 6.57 ng/ml



#5 AR-1016-3

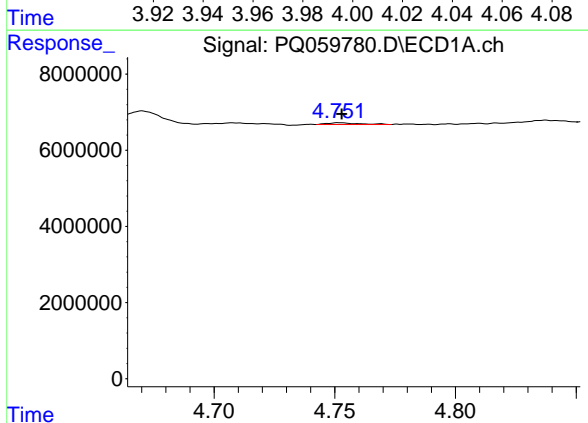
R.T.: 4.670 min
 Delta R.T.: 0.009 min
 Response: 4188222
 Conc: 11.23 ng/ml

Instrument :
 ECD_Q
 ClientSampleId :



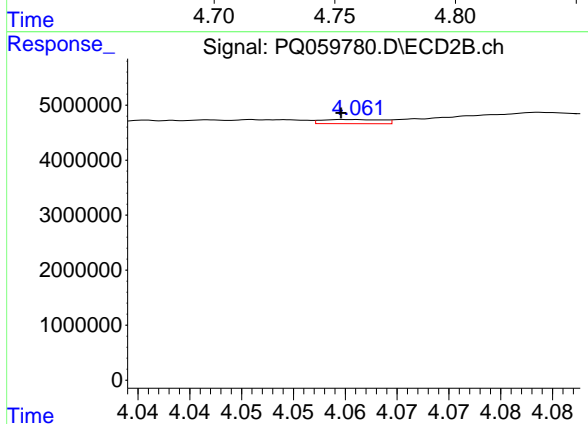
#5 AR-1016-3

R.T.: 4.013 min
 Delta R.T.: 0.000 min
 Response: 484850
 Conc: 2.20 ng/ml



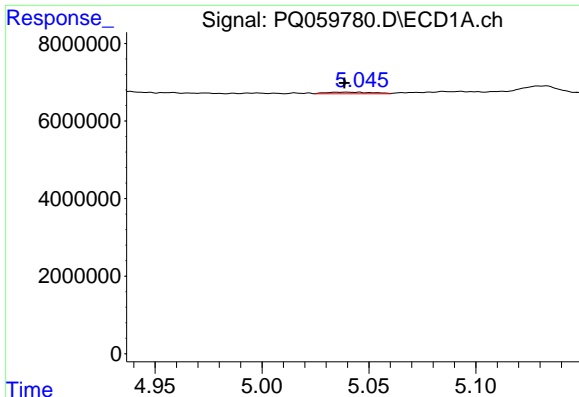
#6 AR-1016-4

R.T.: 4.752 min
 Delta R.T.: 0.000 min
 Response: 421518
 Conc: 1.38 ng/ml



#6 AR-1016-4

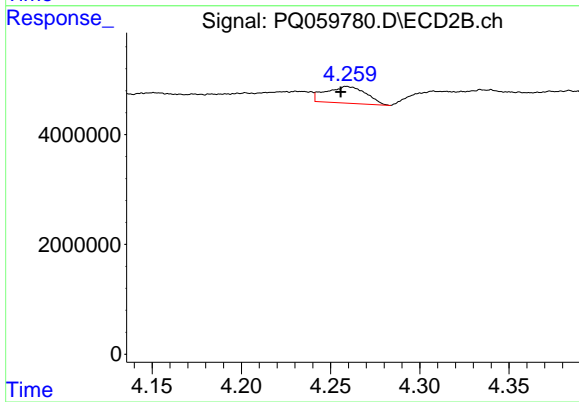
R.T.: 4.061 min
 Delta R.T.: 0.000 min
 Response: 303574
 Conc: 1.78 ng/ml



#7 AR-1016-5

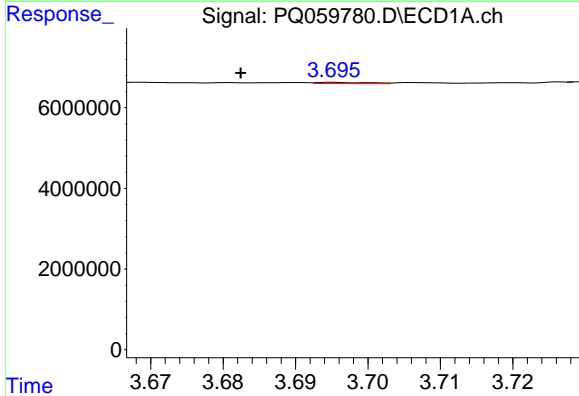
R.T.: 5.039 min
 Delta R.T.: 0.000 min
 Response: 631499
 Conc: 2.04 ng/ml

Instrument :
 ECD_Q
 ClientSampleId :



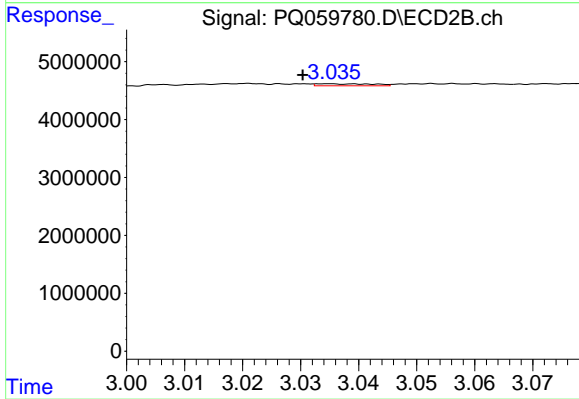
#7 AR-1016-5

R.T.: 4.259 min
 Delta R.T.: 0.003 min
 Response: 4729324
 Conc: 21.07 ng/ml



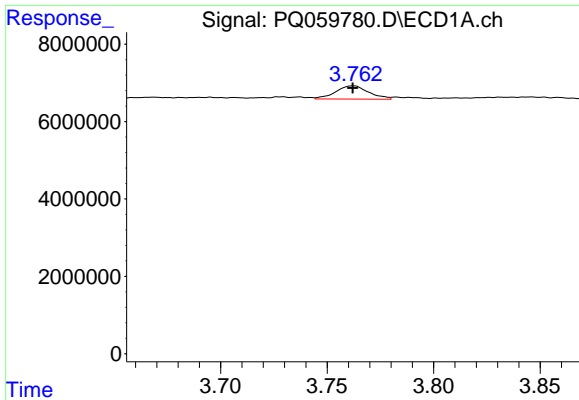
#8 AR-1221-1

R.T.: 3.695 min
 Delta R.T.: 0.013 min
 Response: 137988
 Conc: 0.99 ng/ml



#8 AR-1221-1

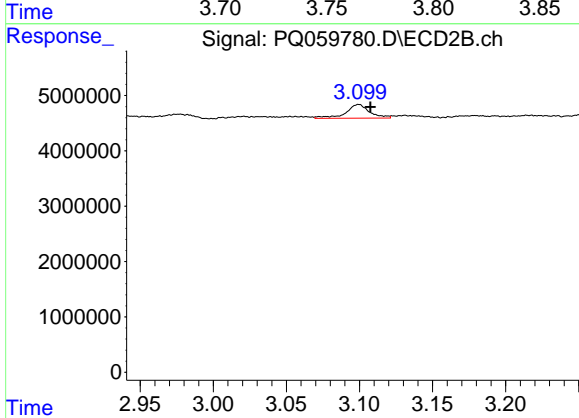
R.T.: 3.035 min
 Delta R.T.: 0.005 min
 Response: 240475
 Conc: 2.46 ng/ml



#9 AR-1221-2

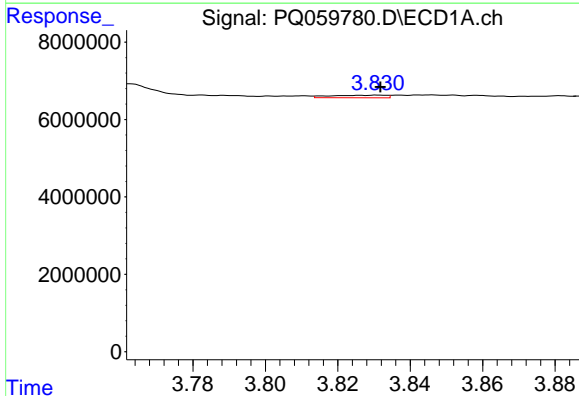
R.T.: 3.762 min
 Delta R.T.: 0.000 min
 Response: 3724233
 Conc: 35.67 ng/ml

Instrument :
 ECD_Q
 ClientSampleId :



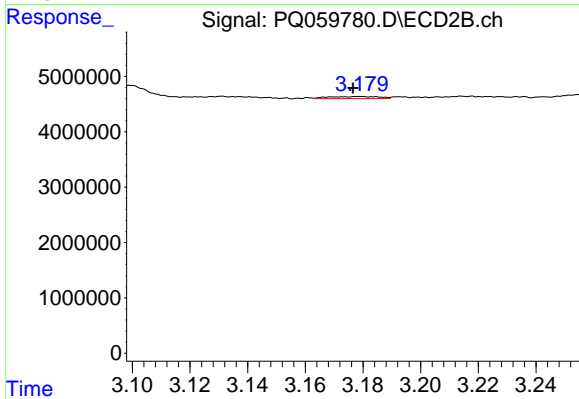
#9 AR-1221-2

R.T.: 3.100 min
 Delta R.T.: -0.008 min
 Response: 2827332
 Conc: 38.65 ng/ml



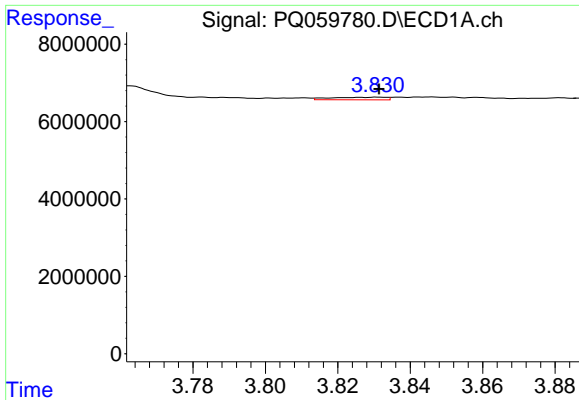
#10 AR-1221-3

R.T.: 3.831 min
 Delta R.T.: 0.000 min
 Response: 714079
 Conc: 2.30 ng/ml



#10 AR-1221-3

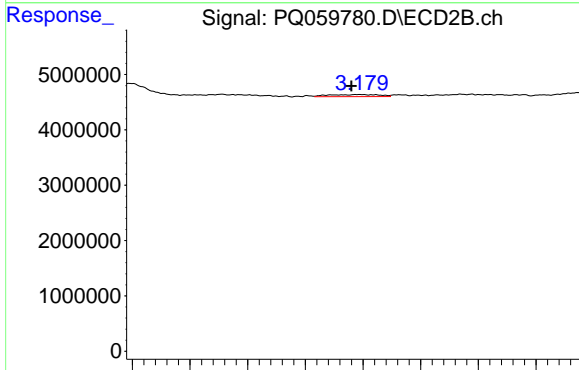
R.T.: 3.179 min
 Delta R.T.: 0.003 min
 Response: 465781
 Conc: 2.07 ng/ml



#11 AR-1232-1

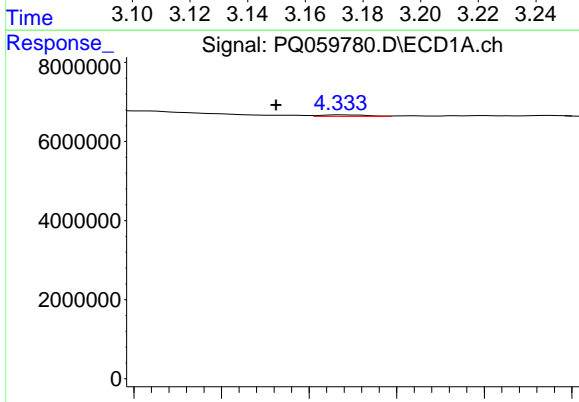
R.T.: 3.831 min
 Delta R.T.: 0.000 min
 Response: 714079
 Conc: 2.92 ng/ml

Instrument :
 ECD_Q
 ClientSampleId :



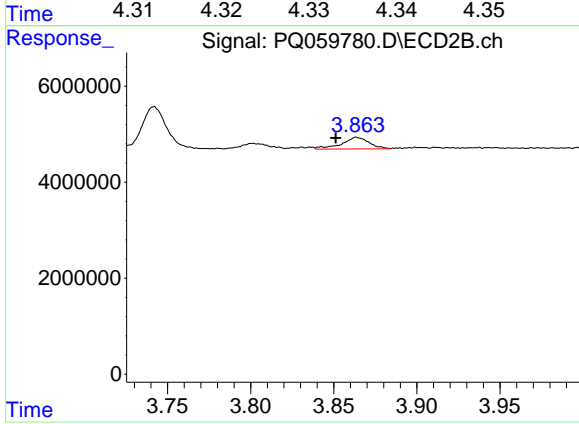
#11 AR-1232-1

R.T.: 3.179 min
 Delta R.T.: 0.003 min
 Response: 465781
 Conc: 2.66 ng/ml



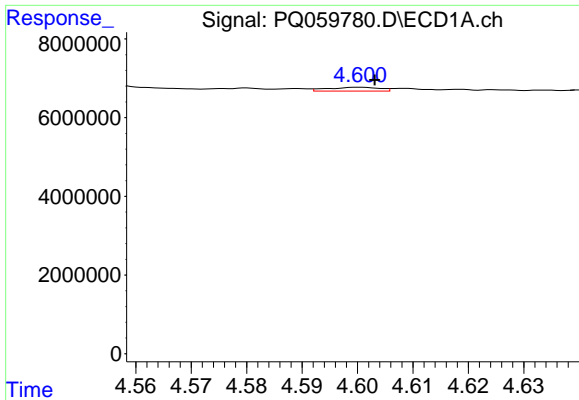
#12 AR-1232-2

R.T.: 4.334 min
 Delta R.T.: 0.008 min
 Response: 136157
 Conc: 0.89 ng/ml



#12 AR-1232-2

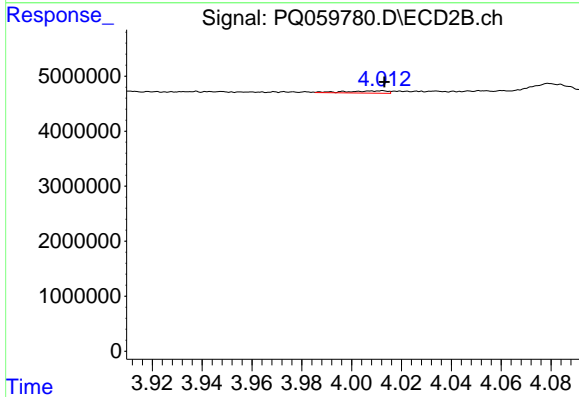
R.T.: 3.864 min
 Delta R.T.: 0.012 min
 Response: 2786680
 Conc: 14.46 ng/ml



#13 AR-1232-3

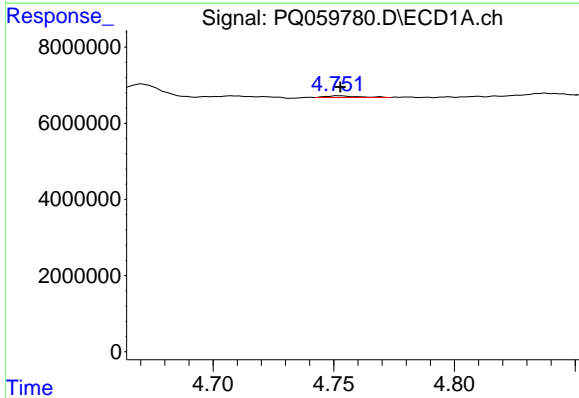
R.T.: 4.600 min
 Delta R.T.: -0.003 min
 Response: 639380
 Conc: 2.31 ng/ml

Instrument :
 ECD_Q
 ClientSampleId :



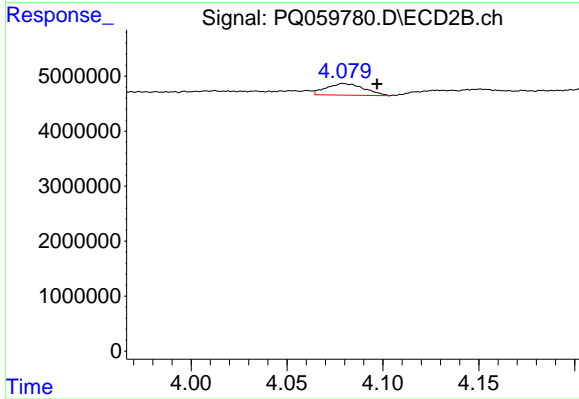
#13 AR-1232-3

R.T.: 4.013 min
 Delta R.T.: 0.000 min
 Response: 484850
 Conc: 4.88 ng/ml



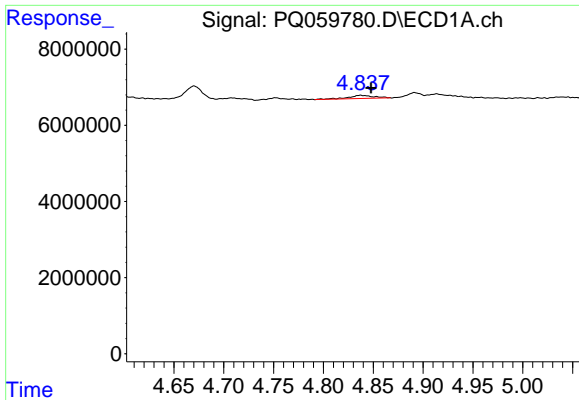
#14 AR-1232-4

R.T.: 4.752 min
 Delta R.T.: 0.000 min
 Response: 421518
 Conc: 2.96 ng/ml



#14 AR-1232-4

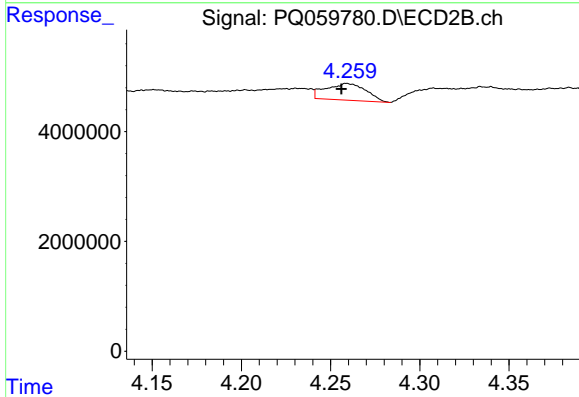
R.T.: 4.079 min
 Delta R.T.: -0.018 min
 Response: 2919307
 Conc: 35.23 ng/ml



#15 AR-1232-5

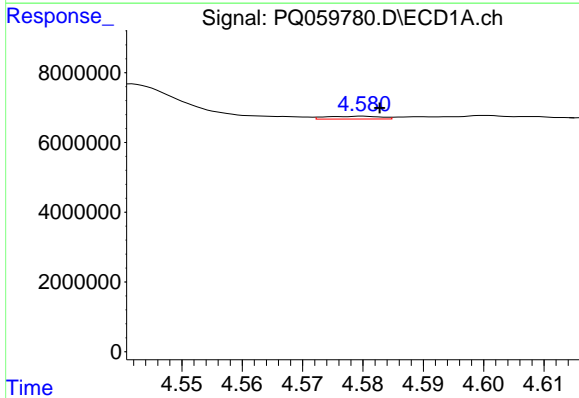
R.T.: 4.837 min
 Delta R.T.: -0.010 min
 Response: 1530469
 Conc: 16.49 ng/ml

Instrument :
 ECD_Q
 ClientSampleId :



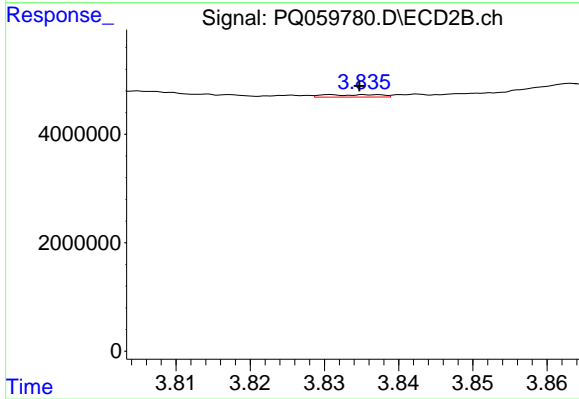
#15 AR-1232-5

R.T.: 4.259 min
 Delta R.T.: 0.003 min
 Response: 4729324
 Conc: 47.29 ng/ml



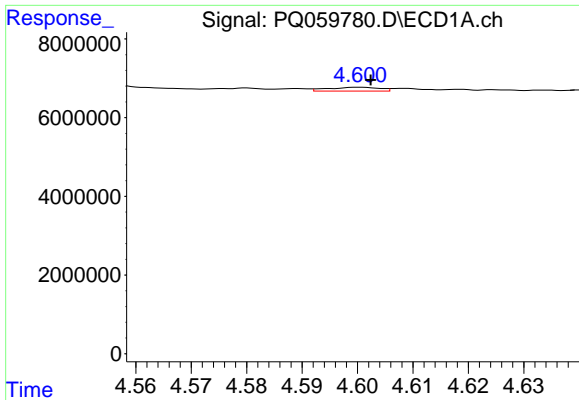
#16 AR-1242-1

R.T.: 4.580 min
 Delta R.T.: -0.003 min
 Response: 505656
 Conc: 1.64 ng/ml



#16 AR-1242-1

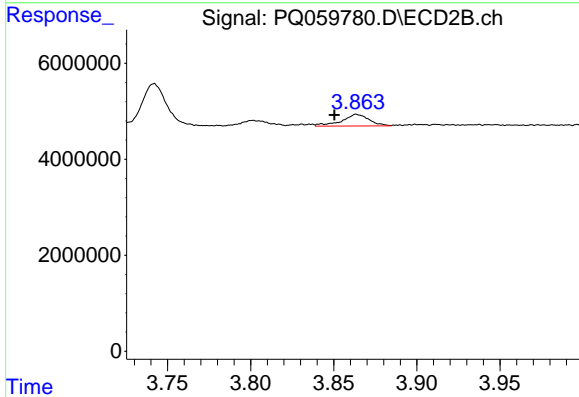
R.T.: 3.831 min
 Delta R.T.: -0.004 min
 Response: 234827
 Conc: 1.09 ng/ml



#17 AR-1242-2

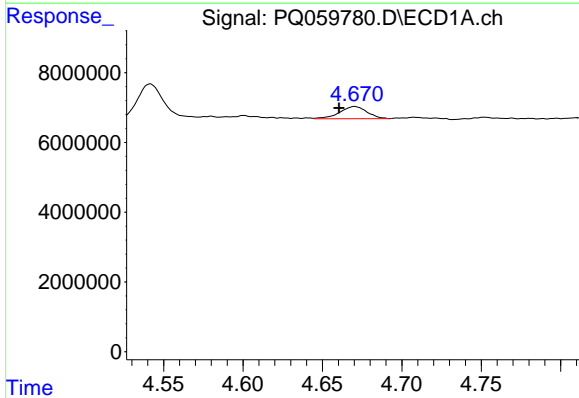
R.T.: 4.600 min
 Delta R.T.: -0.002 min
 Response: 639380
 Conc: 1.43 ng/ml

Instrument :
 ECD_Q
 ClientSampleId :



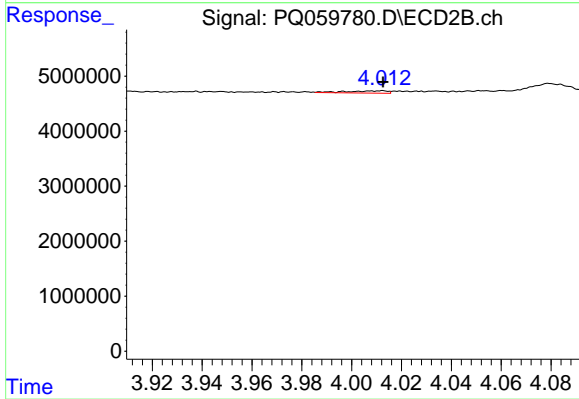
#17 AR-1242-2

R.T.: 3.864 min
 Delta R.T.: 0.013 min
 Response: 2786680
 Conc: 8.80 ng/ml



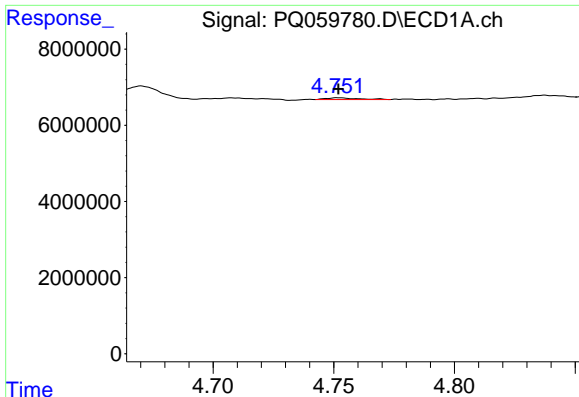
#18 AR-1242-3

R.T.: 4.670 min
 Delta R.T.: 0.010 min
 Response: 4188222
 Conc: 15.16 ng/ml



#18 AR-1242-3

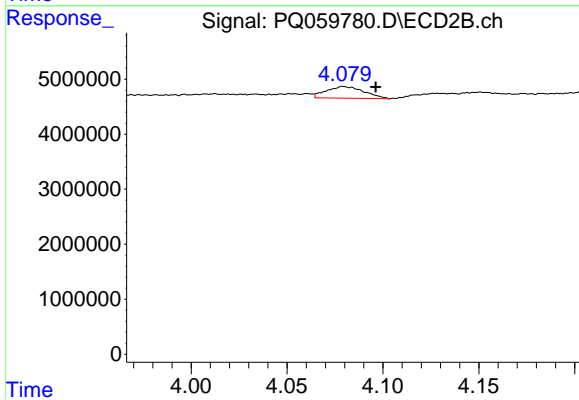
R.T.: 4.013 min
 Delta R.T.: 0.000 min
 Response: 484850
 Conc: 2.92 ng/ml



#19 AR-1242-4

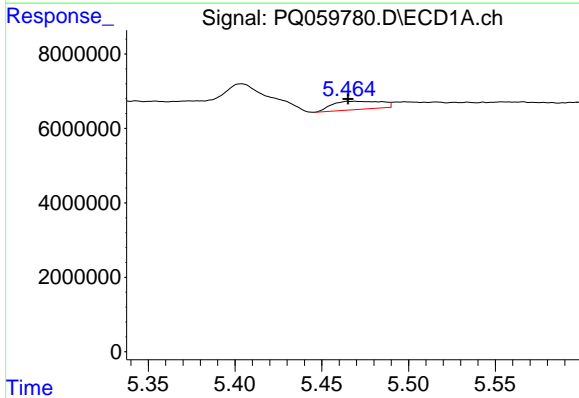
R.T.: 4.752 min
 Delta R.T.: 0.000 min
 Response: 421518
 Conc: 1.84 ng/ml

Instrument :
 ECD_Q
 ClientSampleId :



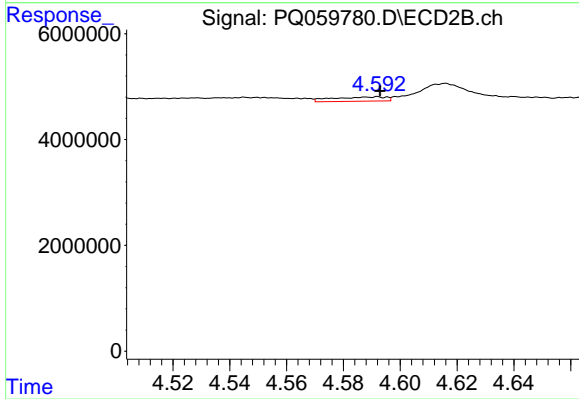
#19 AR-1242-4

R.T.: 4.079 min
 Delta R.T.: -0.017 min
 Response: 2919307
 Conc: 19.24 ng/ml



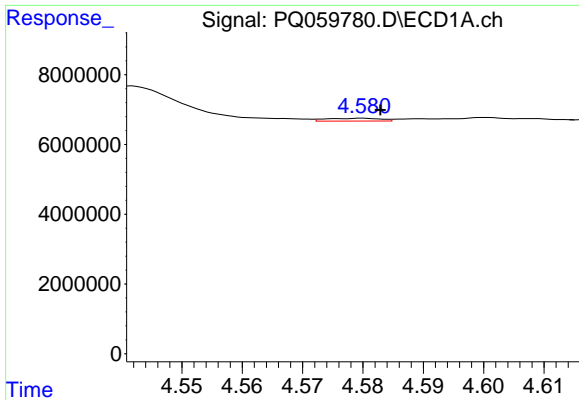
#20 AR-1242-5

R.T.: 5.469 min
 Delta R.T.: 0.004 min
 Response: 4385019
 Conc: 17.95 ng/ml



#20 AR-1242-5

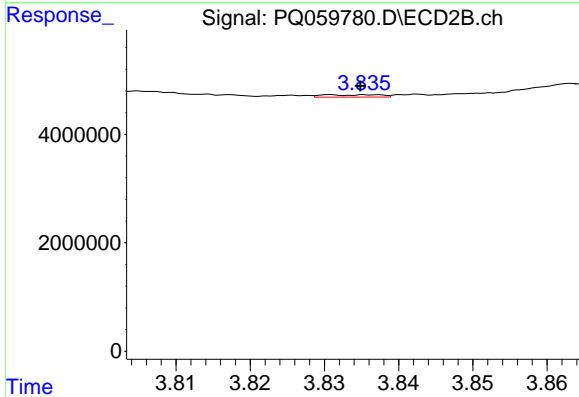
R.T.: 4.588 min
 Delta R.T.: -0.005 min
 Response: 1066868
 Conc: 5.00 ng/ml



#21 AR-1248-1

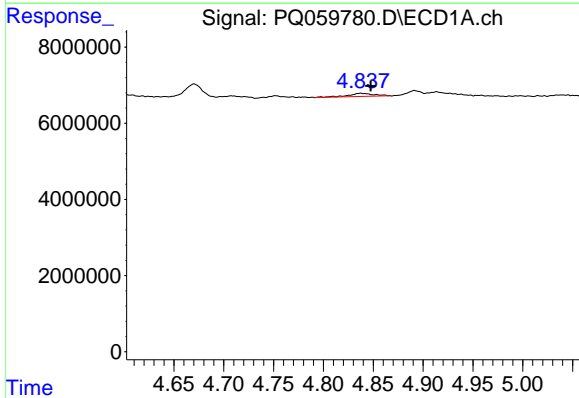
R.T.: 4.580 min
 Delta R.T.: -0.003 min
 Response: 505656
 Conc: 2.09 ng/ml

Instrument :
 ECD_Q
 ClientSampleId :



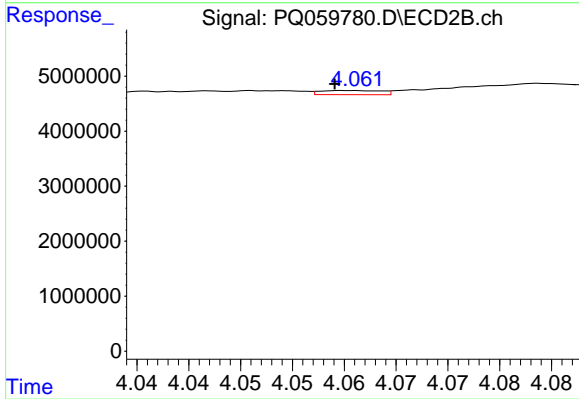
#21 AR-1248-1

R.T.: 3.831 min
 Delta R.T.: -0.004 min
 Response: 234827
 Conc: 1.40 ng/ml



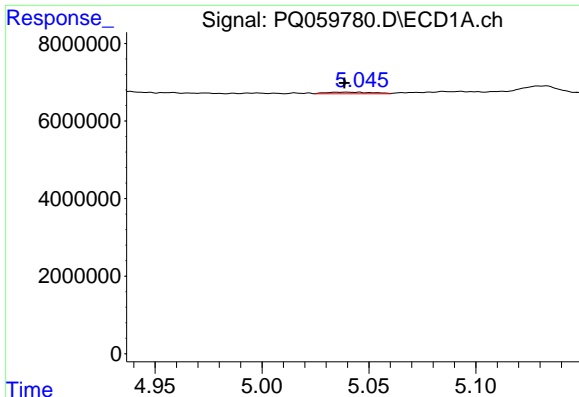
#22 AR-1248-2

R.T.: 4.837 min
 Delta R.T.: -0.010 min
 Response: 1530469
 Conc: 5.33 ng/ml



#22 AR-1248-2

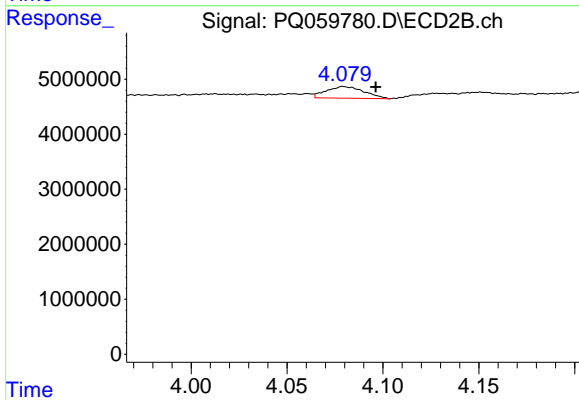
R.T.: 4.061 min
 Delta R.T.: 0.001 min
 Response: 303574
 Conc: 1.35 ng/ml



#23 AR-1248-3

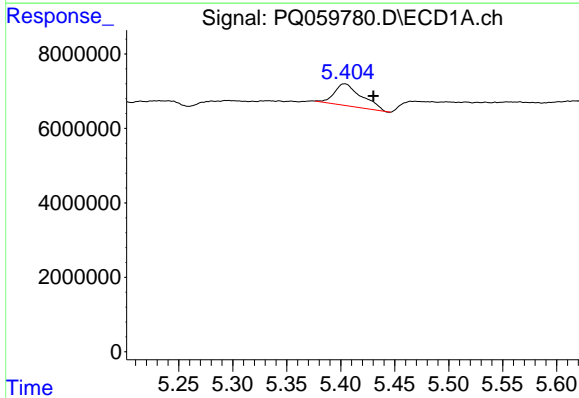
R.T.: 5.039 min
 Delta R.T.: 0.000 min
 Response: 631499
 Conc: 1.67 ng/ml

Instrument :
 ECD_Q
 ClientSampleId :



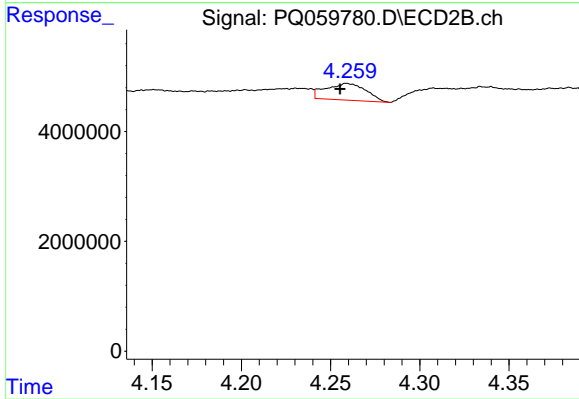
#23 AR-1248-3

R.T.: 4.079 min
 Delta R.T.: -0.017 min
 Response: 2919307
 Conc: 13.40 ng/ml



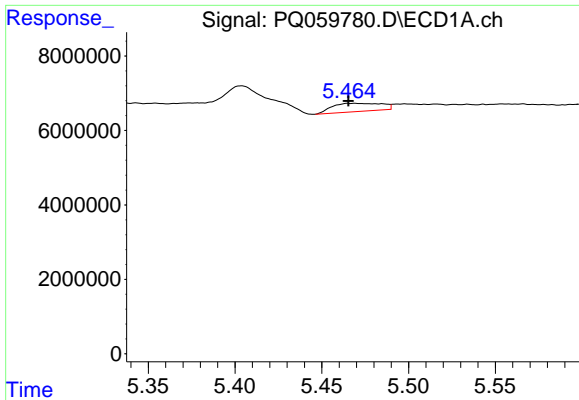
#24 AR-1248-4

R.T.: 5.404 min
 Delta R.T.: -0.027 min
 Response: 10312714
 Conc: 24.64 ng/ml



#24 AR-1248-4

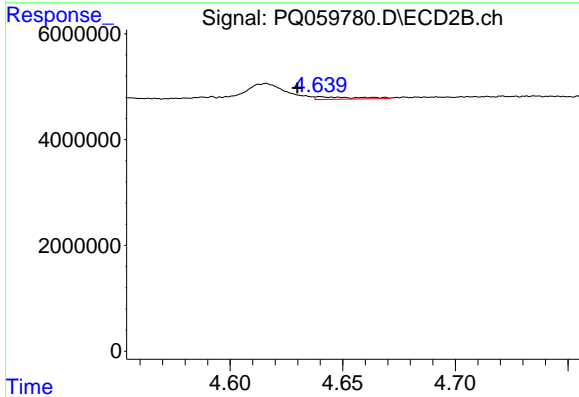
R.T.: 4.259 min
 Delta R.T.: 0.004 min
 Response: 4729324
 Conc: 16.87 ng/ml



#25 AR-1248-5

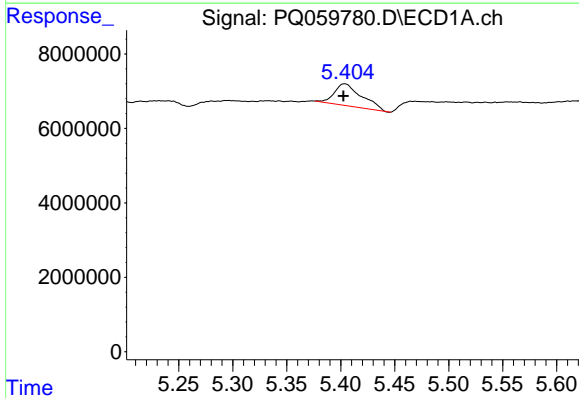
R.T.: 5.469 min
 Delta R.T.: 0.004 min
 Response: 4385019
 Conc: 10.73 ng/ml

Instrument :
 ECD_Q
 ClientSampleId :



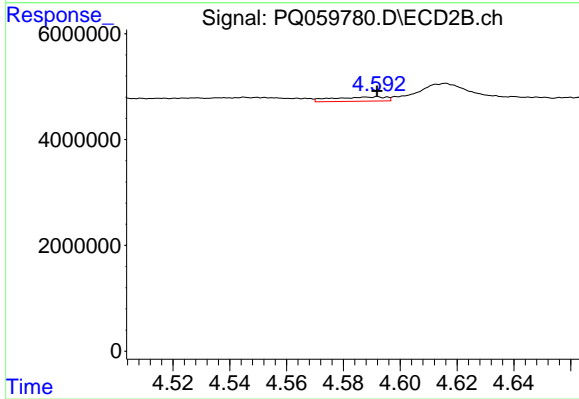
#25 AR-1248-5

R.T.: 4.640 min
 Delta R.T.: 0.010 min
 Response: 589784
 Conc: 2.16 ng/ml



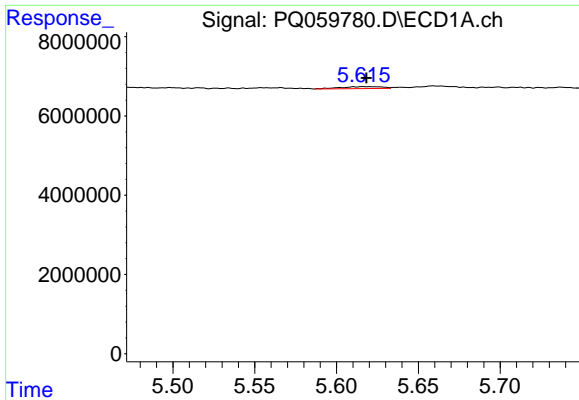
#26 AR-1254-1

R.T.: 5.404 min
 Delta R.T.: 0.001 min
 Response: 10312714
 Conc: 23.06 ng/ml



#26 AR-1254-1

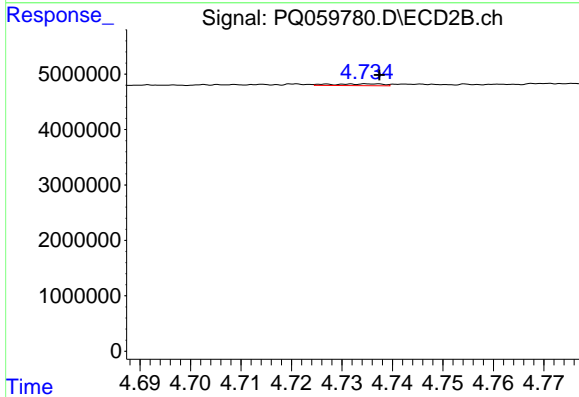
R.T.: 4.588 min
 Delta R.T.: -0.004 min
 Response: 1066868
 Conc: 2.41 ng/ml



#27 AR-1254-2

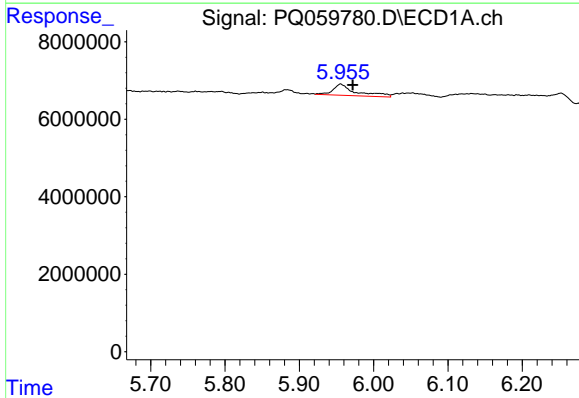
R.T.: 5.617 min
 Delta R.T.: -0.002 min
 Response: 863215
 Conc: 1.25 ng/ml

Instrument :
 ECD_Q
 ClientSampleId :



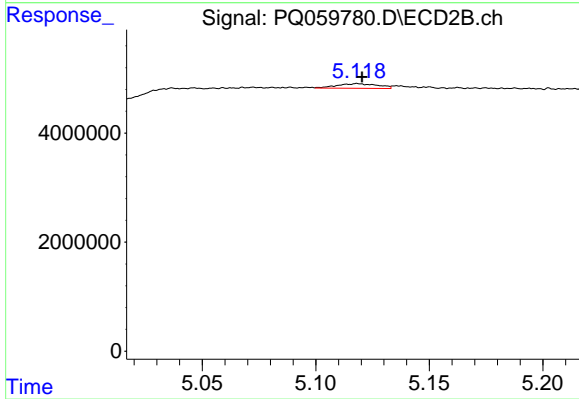
#27 AR-1254-2

R.T.: 4.732 min
 Delta R.T.: -0.006 min
 Response: 224672
 Conc: 0.58 ng/ml



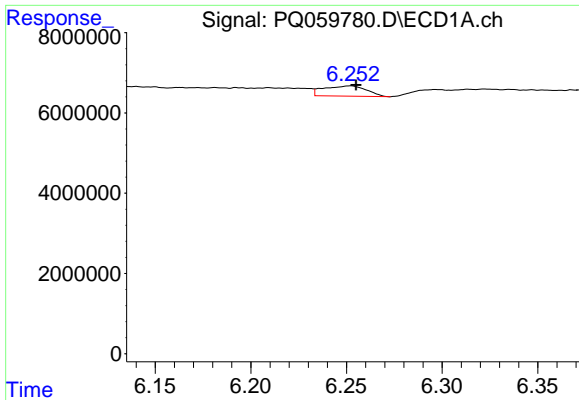
#28 AR-1254-3

R.T.: 5.956 min
 Delta R.T.: -0.016 min
 Response: 6232875
 Conc: 8.69 ng/ml



#28 AR-1254-3

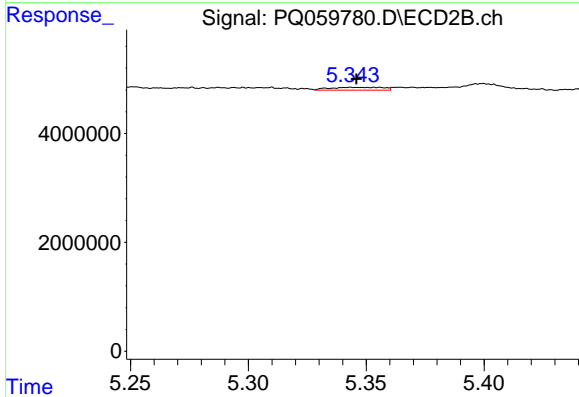
R.T.: 5.118 min
 Delta R.T.: -0.002 min
 Response: 1070640
 Conc: 1.78 ng/ml



#29 AR-1254-4

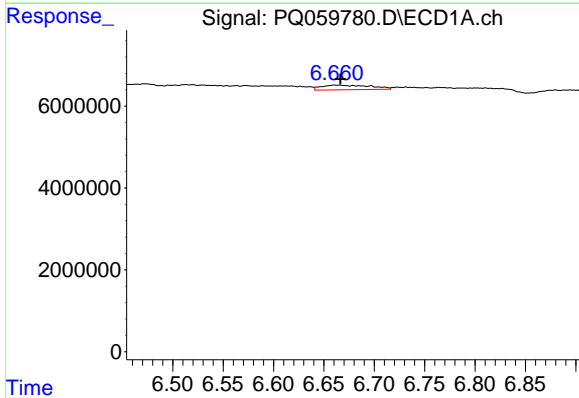
R.T.: 6.252 min
 Delta R.T.: -0.003 min
 Response: 3956677
 Conc: 7.81 ng/ml

Instrument :
 ECD_Q
 ClientSampleId :



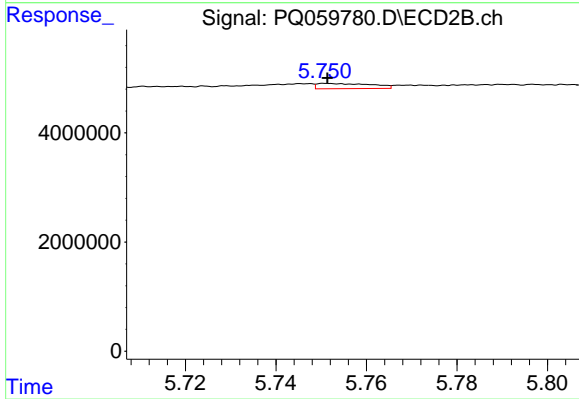
#29 AR-1254-4

R.T.: 5.344 min
 Delta R.T.: -0.002 min
 Response: 820792
 Conc: 2.02 ng/ml



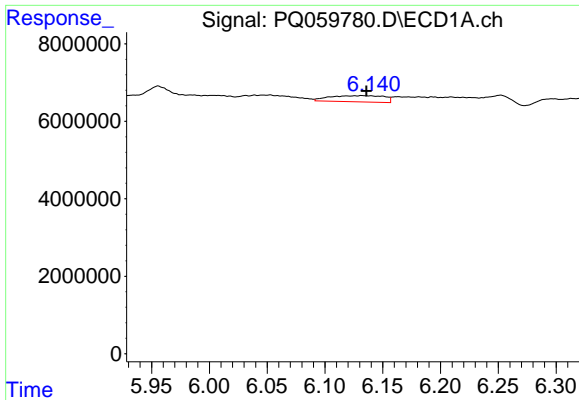
#30 AR-1254-5

R.T.: 6.661 min
 Delta R.T.: -0.006 min
 Response: 3852508
 Conc: 7.27 ng/ml



#30 AR-1254-5

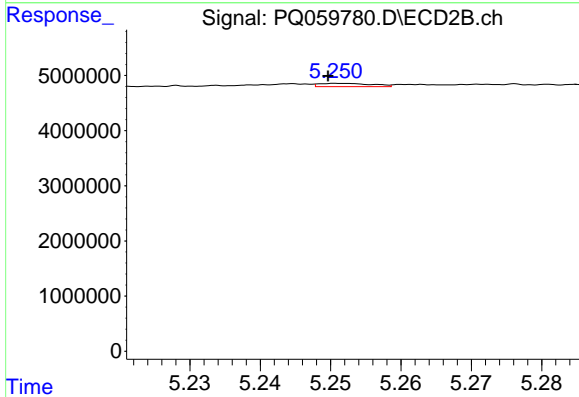
R.T.: 5.751 min
 Delta R.T.: 0.000 min
 Response: 818174
 Conc: 1.32 ng/ml



#31 AR-1260-1

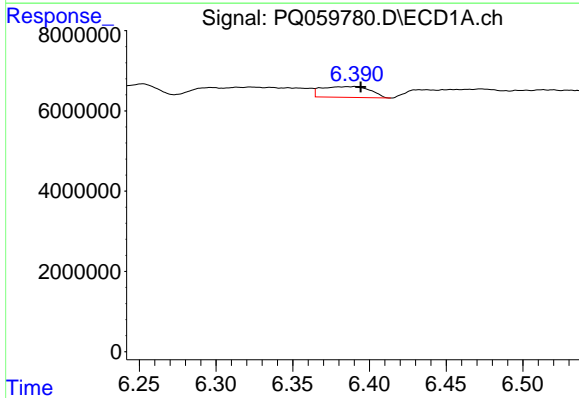
R.T.: 6.132 min
 Delta R.T.: -0.004 min
 Response: 5262435
 Conc: 9.28 ng/ml

Instrument :
 ECD_Q
 ClientSampleId :



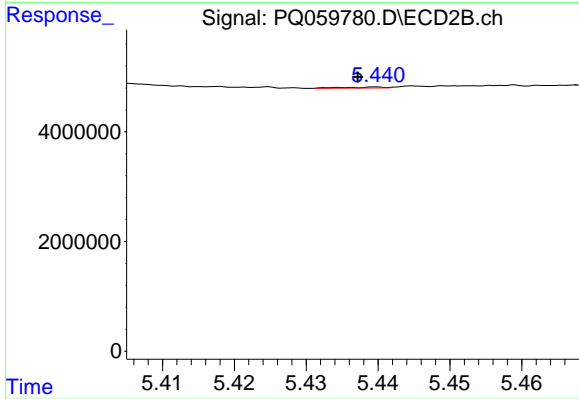
#31 AR-1260-1

R.T.: 5.251 min
 Delta R.T.: 0.002 min
 Response: 311844
 Conc: 0.69 ng/ml



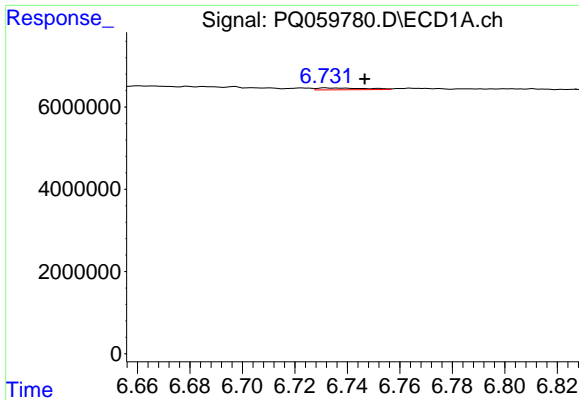
#32 AR-1260-2

R.T.: 6.390 min
 Delta R.T.: -0.004 min
 Response: 5910562
 Conc: 9.33 ng/ml



#32 AR-1260-2

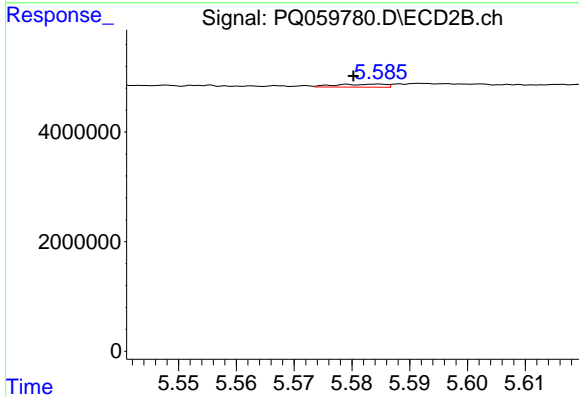
R.T.: 5.440 min
 Delta R.T.: 0.003 min
 Response: 67802
 Conc: 0.12 ng/ml



#33 AR-1260-3

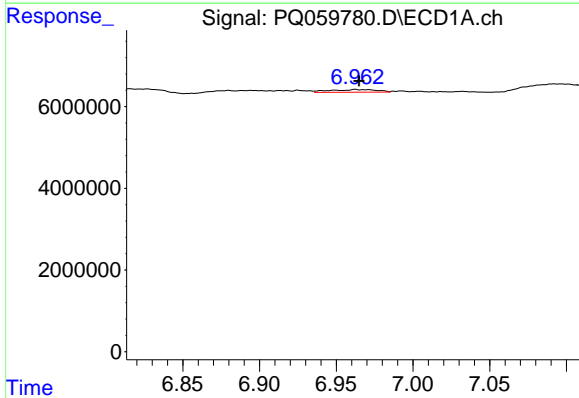
R.T.: 6.732 min
 Delta R.T.: -0.015 min
 Response: 571665
 Conc: 1.55 ng/ml

Instrument :
 ECD_Q
 ClientSampleId :



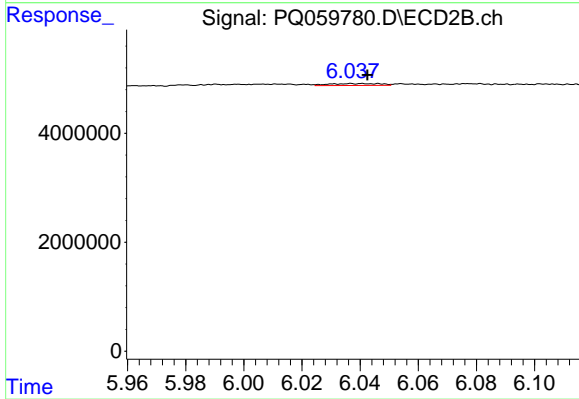
#33 AR-1260-3

R.T.: 5.585 min
 Delta R.T.: 0.005 min
 Response: 333084
 Conc: 0.63 ng/ml



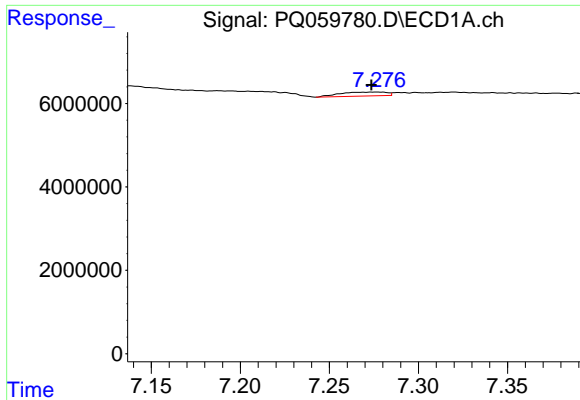
#34 AR-1260-4

R.T.: 6.963 min
 Delta R.T.: -0.002 min
 Response: 1388788
 Conc: 3.34 ng/ml



#34 AR-1260-4

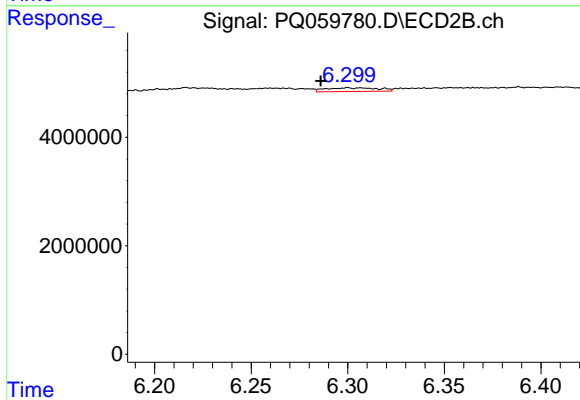
R.T.: 6.037 min
 Delta R.T.: -0.005 min
 Response: 419182
 Conc: 1.06 ng/ml



#35 AR-1260-5

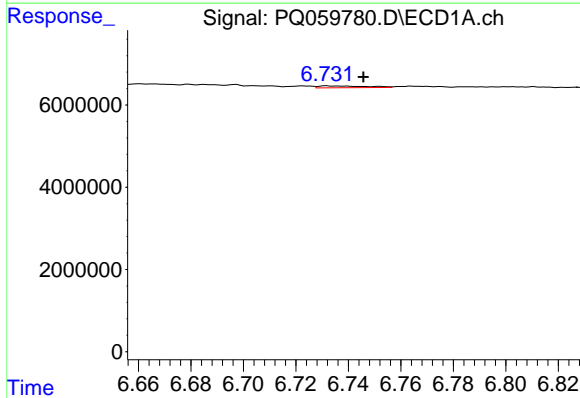
R.T.: 7.276 min
 Delta R.T.: 0.002 min
 Response: 1767943
 Conc: 2.38 ng/ml

Instrument :
 ECD_Q
 ClientSampleId :



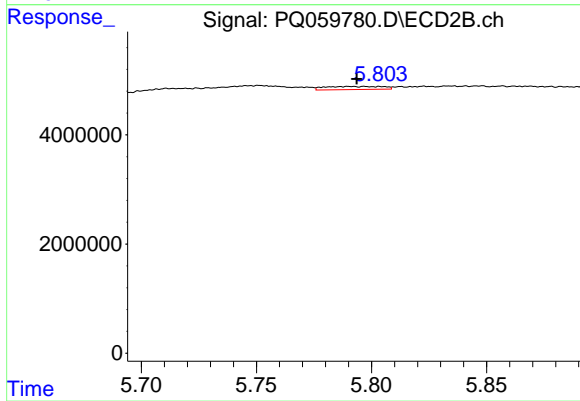
#35 AR-1260-5

R.T.: 6.300 min
 Delta R.T.: 0.014 min
 Response: 1312274
 Conc: 1.34 ng/ml



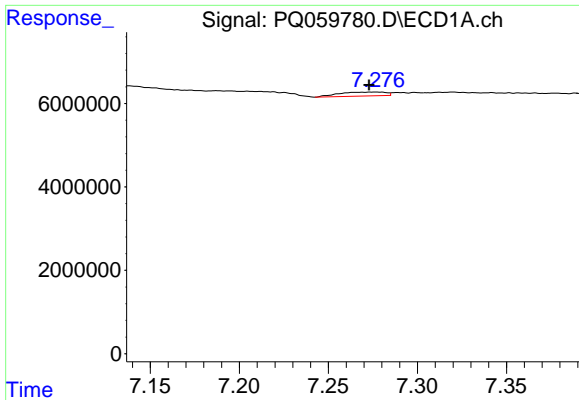
#36 AR-1262-1

R.T.: 6.732 min
 Delta R.T.: -0.014 min
 Response: 571665
 Conc: 0.99 ng/ml



#36 AR-1262-1

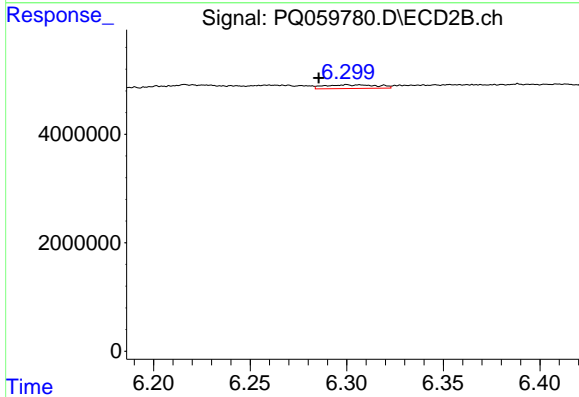
R.T.: 5.797 min
 Delta R.T.: 0.004 min
 Response: 1033593
 Conc: 1.73 ng/ml



#37 AR-1262-2

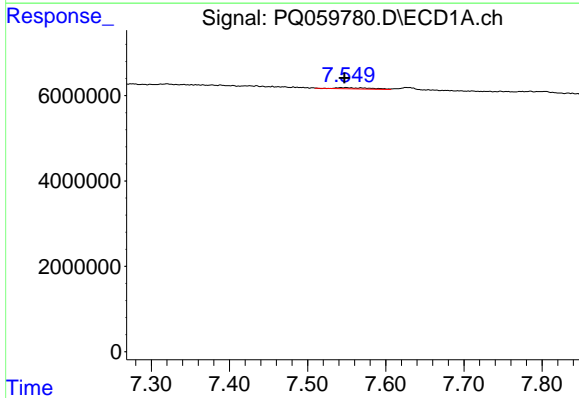
R.T.: 7.276 min
 Delta R.T.: 0.003 min
 Response: 1767943
 Conc: 1.99 ng/ml

Instrument :
 ECD_Q
 ClientSampleId :



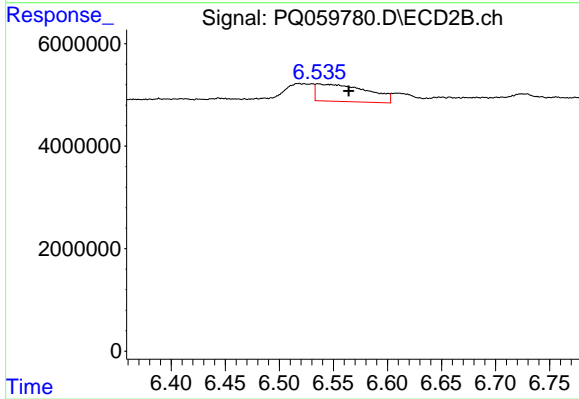
#37 AR-1262-2

R.T.: 6.300 min
 Delta R.T.: 0.014 min
 Response: 1312274
 Conc: 1.17 ng/ml



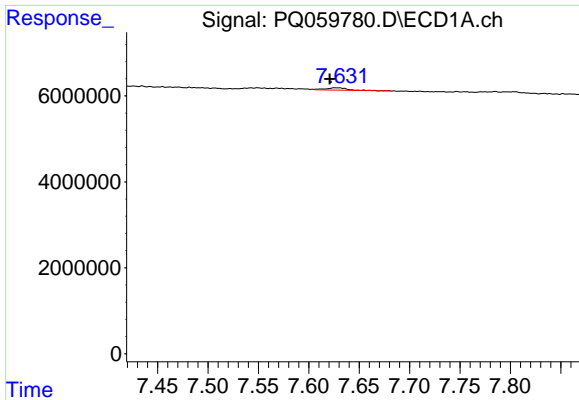
#38 AR-1262-3

R.T.: 7.549 min
 Delta R.T.: 0.002 min
 Response: 886287
 Conc: 1.60 ng/ml



#38 AR-1262-3

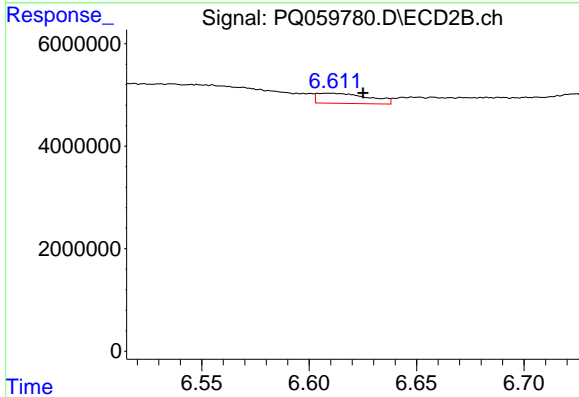
R.T.: 6.536 min
 Delta R.T.: -0.028 min
 Response: 11071716
 Conc: 25.02 ng/ml



#39 AR-1262-4

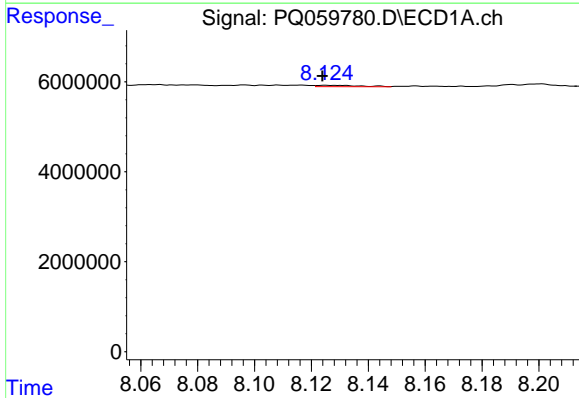
R.T.: 7.626 min
 Delta R.T.: 0.006 min
 Response: 852244
 Conc: 3.30 ng/ml

Instrument :
 ECD_Q
 ClientSampleId :



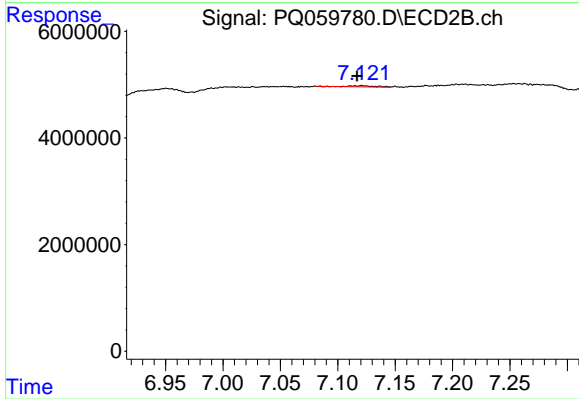
#39 AR-1262-4

R.T.: 6.609 min
 Delta R.T.: -0.016 min
 Response: 3303901
 Conc: 3.94 ng/ml



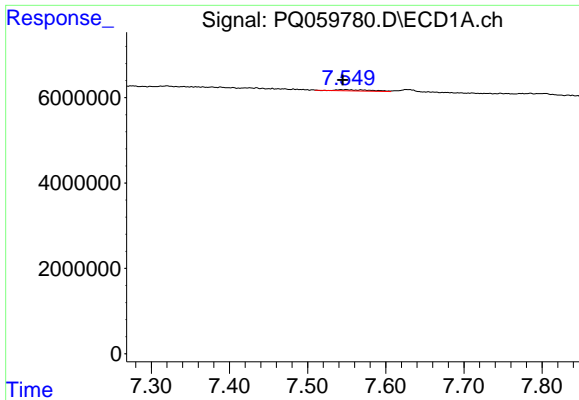
#40 AR-1262-5

R.T.: 8.125 min
 Delta R.T.: 0.001 min
 Response: 307720
 Conc: 1.18 ng/ml



#40 AR-1262-5

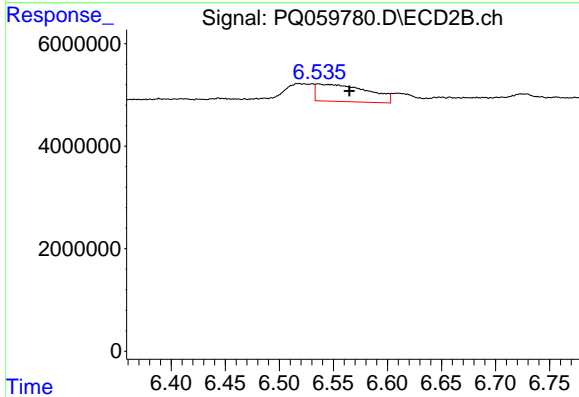
R.T.: 7.121 min
 Delta R.T.: 0.004 min
 Response: 333085
 Conc: 0.85 ng/ml



#41 AR-1268-1

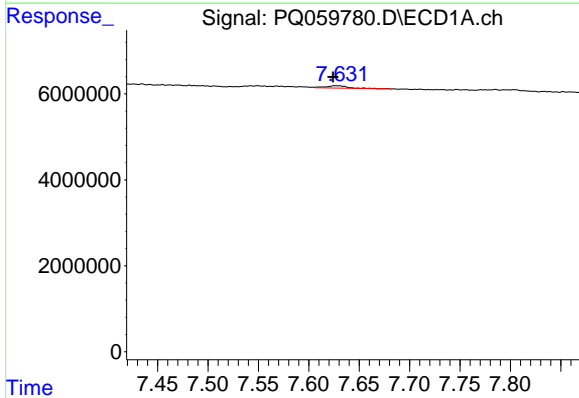
R.T.: 7.549 min
 Delta R.T.: 0.004 min
 Response: 886287
 Conc: 0.94 ng/ml

Instrument :
 ECD_Q
 ClientSampleId :



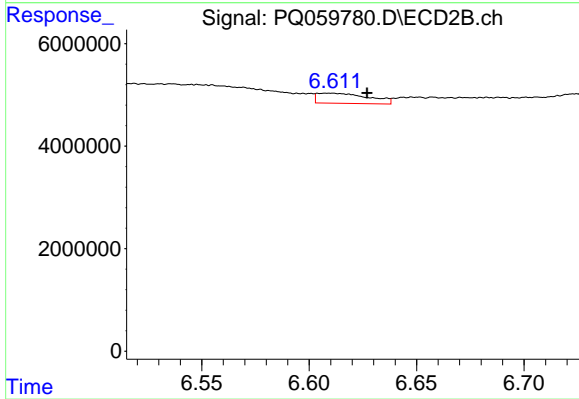
#41 AR-1268-1

R.T.: 6.536 min
 Delta R.T.: -0.029 min
 Response: 11071716
 Conc: 8.31 ng/ml



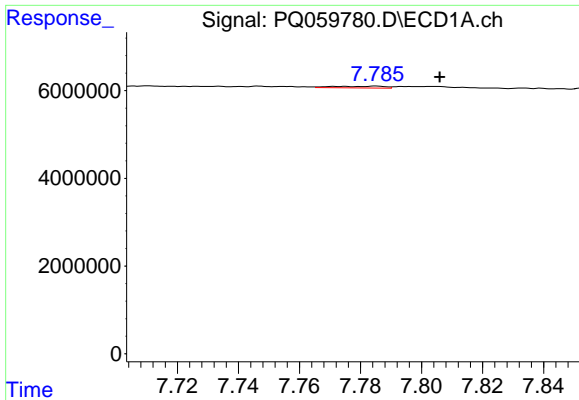
#42 AR-1268-2

R.T.: 7.626 min
 Delta R.T.: 0.002 min
 Response: 852244
 Conc: 1.00 ng/ml



#42 AR-1268-2

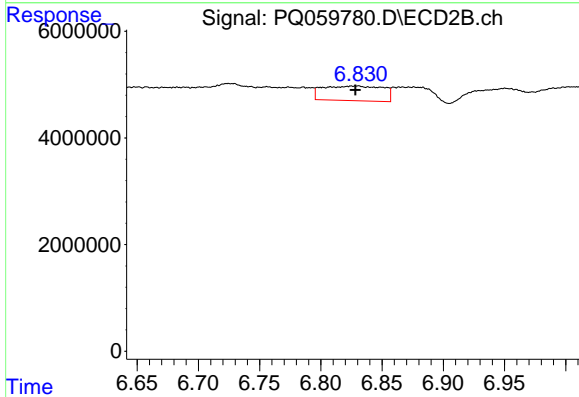
R.T.: 6.609 min
 Delta R.T.: -0.018 min
 Response: 3303901
 Conc: 2.71 ng/ml



#43 AR-1268-3

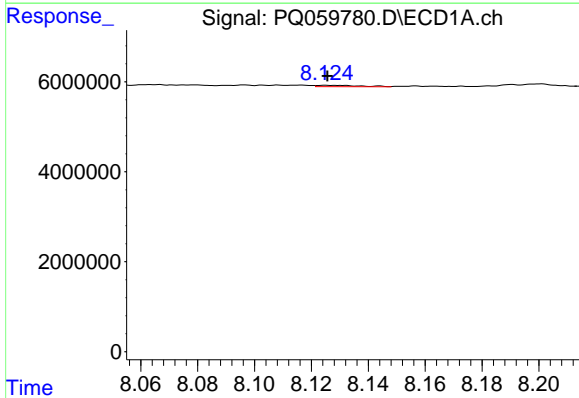
R.T.: 7.785 min
 Delta R.T.: -0.021 min
 Response: 463747
 Conc: 0.67 ng/ml

Instrument :
 ECD_Q
 ClientSampleId :



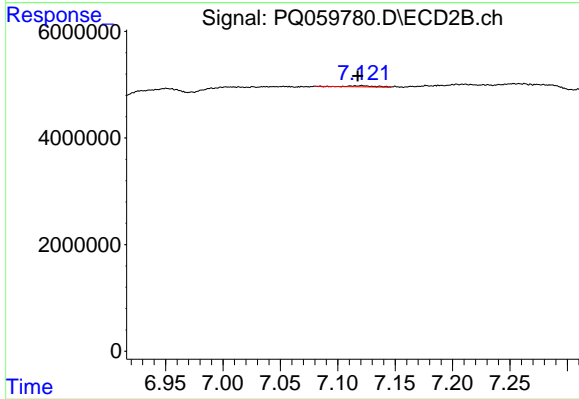
#43 AR-1268-3

R.T.: 6.830 min
 Delta R.T.: 0.002 min
 Response: 9469182
 Conc: 9.01 ng/ml



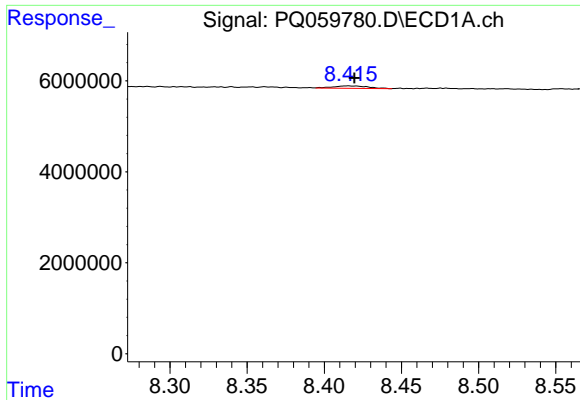
#44 AR-1268-4

R.T.: 8.125 min
 Delta R.T.: 0.000 min
 Response: 307720
 Conc: 1.07 ng/ml



#44 AR-1268-4

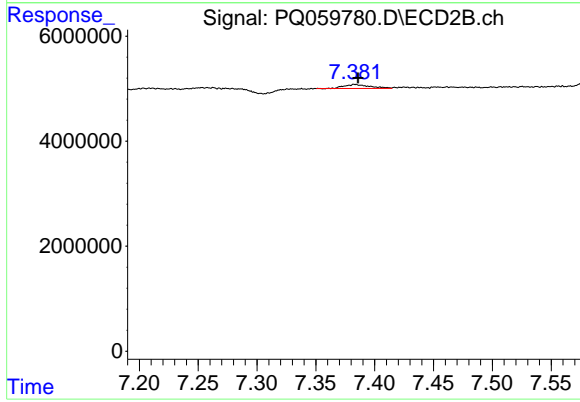
R.T.: 7.121 min
 Delta R.T.: 0.003 min
 Response: 333085
 Conc: 0.76 ng/ml



#45 AR-1268-5

R.T.: 8.416 min
Delta R.T.: -0.004 min
Response: 845984
Conc: 0.42 ng/ml

Instrument :
ECD_Q
ClientSampleId :



#45 AR-1268-5

R.T.: 7.383 min
Delta R.T.: -0.003 min
Response: 1164192
Conc: 0.34 ng/ml