

Data Path : Z:\pestpcbsrv\HPCHEM1\ECD_Q\Data\PQ102222\
 Data File : PQ059718.D
 Signal(s) : Signal #1: ECD1A.ch Signal #2: ECD2B.ch
 Acq On : 21 Oct 2022 09:45
 Operator : YP\AJ
 Sample : N4955-07
 Misc : AR1660 LOD 25 PPB
 ALS Vial : 5 Sample Multiplier: 1

Instrument :
 ECD_Q
ClientSampleId :
 LOD-MDL-WATER-01-QT4-2022

Manual Integrations
APPROVED
 Reviewed By :Yogesh Patel 10/24/2022
 Supervised By :Ankita Jodhani 10/24/2022

Integration File signal 1: autoint1.e
 Integration File signal 2: autoint2.e
 Quant Time: Oct 22 03:47:14 2022
 Quant Method : Z:\pestpcbsrv\HPCHEM1\ECD_Q\Method\PQ102122.M
 Quant Title : GC EXTRACTABLES
 QLast Update : Fri Oct 21 08:02:10 2022
 Response via : Initial Calibration
 Integrator: ChemStation

Volume Inj. : 2 µl
 Signal #1 Phase : ZB-MR1 Signal #2 Phase: ZB-MR2
 Signal #1 Info : 30Mx0.32mmx 0.50µ Signal #2 Info : 30M x 0.32mm x 0.25µm

Compound	RT#1	RT#2	Resp#1	Resp#2	ng/ml	ng/ml

System Monitoring Compounds						
1) SA Tetrachlo...	3.484	2.829	232.1E6	169.3E6	20.522	21.232
2) SA Decachlor...	8.653	7.603	122.7E6	182.6E6	22.437	21.730
Target Compounds						
3) L1 AR-1016-1	4.583	3.835	9950233	5692021	23.665	19.942
4) L1 AR-1016-2	4.603	3.851	15268296	8254411	24.812	19.450
5) L1 AR-1016-3	4.661	4.013	7448672	4095267	19.971	18.590
6) L1 AR-1016-4	4.752	4.059	6002631	3182734	19.604	18.612
7) L1 AR-1016-5	5.039	4.256	11359420	5318239	36.705	23.695 #
31) L7 AR-1260-1	6.136	5.249	12153646	6788749	21.432m	14.958m#
32) L7 AR-1260-2	6.393	5.436	17054501	10853773	26.912m	19.492m#
33) L7 AR-1260-3	6.746	5.580	11464065	9434314	31.018	17.759m#
34) L7 AR-1260-4	6.964	6.041	9693124	8297722	23.320	21.000m
35) L7 AR-1260-5	7.272	6.286	17563592	16622994	23.602	16.970m#

(f)=RT Delta > 1/2 Window (#)=Amounts differ by > 25% (m)=manual int.

Data Path : Z:\pestpcbsrv\HPCHEM1\ECD_Q\Data\PQ102222\
 Data File : PQ059718.D
 Signal(s) : Signal #1: ECD1A.ch Signal #2: ECD2B.ch
 Acq On : 21 Oct 2022 09:45
 Operator : YP\AJ
 Sample : N4955-07
 Misc : AR1660 LOD 25 PPB
 ALS Vial : 5 Sample Multiplier: 1

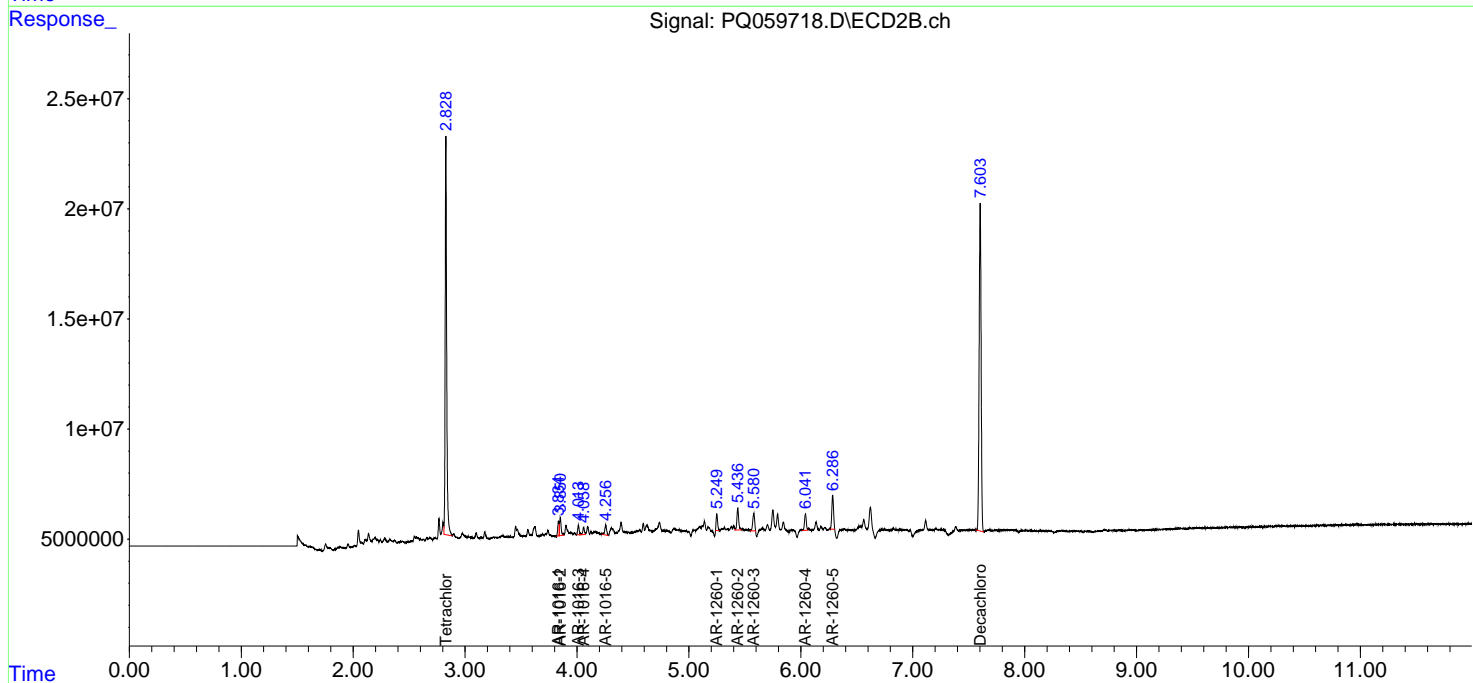
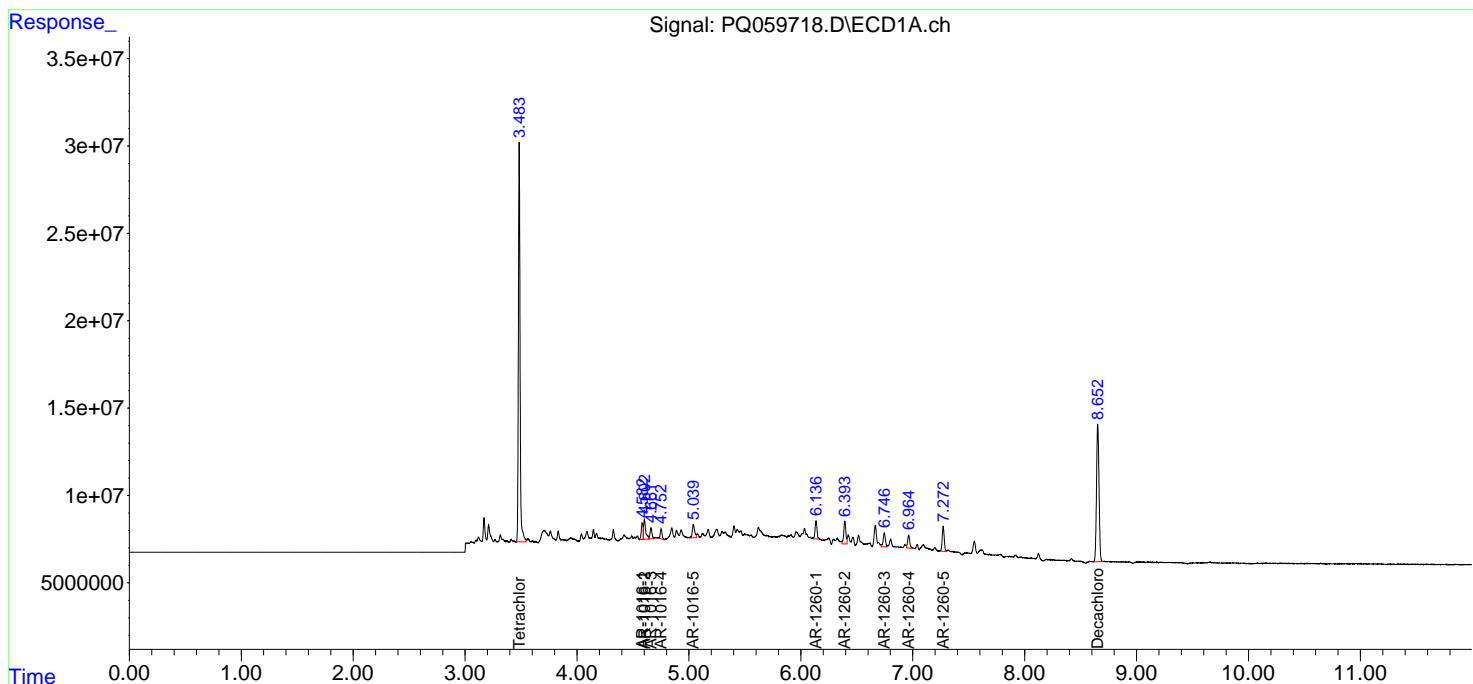
Instrument :
 ECD_Q
ClientSampleId :
 LOD-MDL-WATER-01-QT4-2022

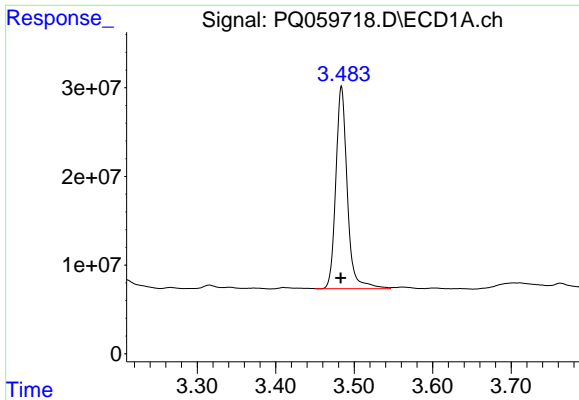
Manual Integrations
APPROVED

Reviewed By :Yogesh Patel 10/24/2022
 Supervised By :Ankita Jodhani 10/24/2022

Integration File signal 1: autoint1.e
 Integration File signal 2: autoint2.e
 Quant Time: Oct 22 03:47:14 2022
 Quant Method : Z:\pestpcbsrv\HPCHEM1\ECD_Q\Method\PQ102122.M
 Quant Title : GC EXTRACTABLES
 QLast Update : Fri Oct 21 08:02:10 2022
 Response via : Initial Calibration
 Integrator: ChemStation

Volume Inj. : 2 µl
 Signal #1 Phase : ZB-MR1 Signal #2 Phase: ZB-MR2
 Signal #1 Info : 30Mx0.32mmx 0.50µ Signal #2 Info : 30M x 0.32mm x 0.25µm

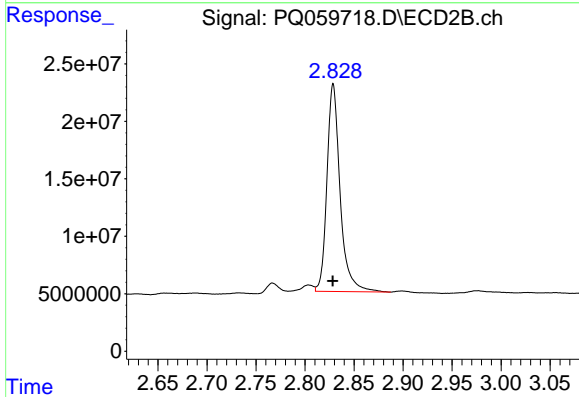




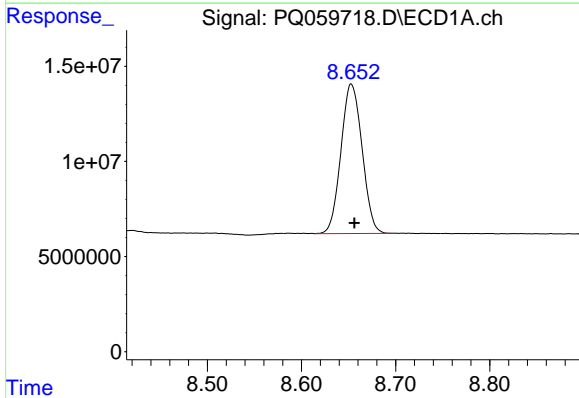
#1 Tetrachloro-m-xylene
 R.T.: 3.484 min
 Delta R.T.: 0.000 min
 Response: 232064539
 Conc: 20.52 ng/ml

Instrument : ECD_Q
 Client Sample Id : LOD-MDL-WATER-01-QT4-2022

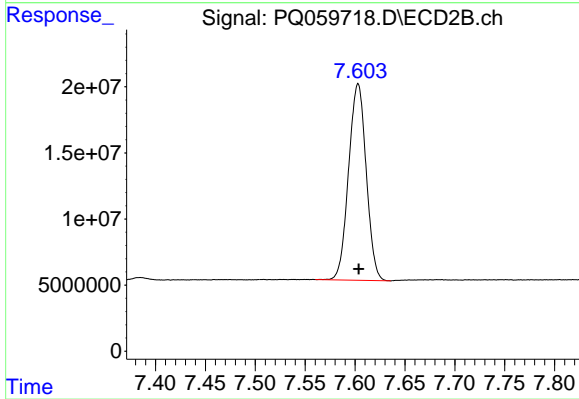
Manual Integrations
APPROVED
 Reviewed By :Yogesh Patel 10/24/2022
 Supervised By :Ankita Jodhani 10/24/2022



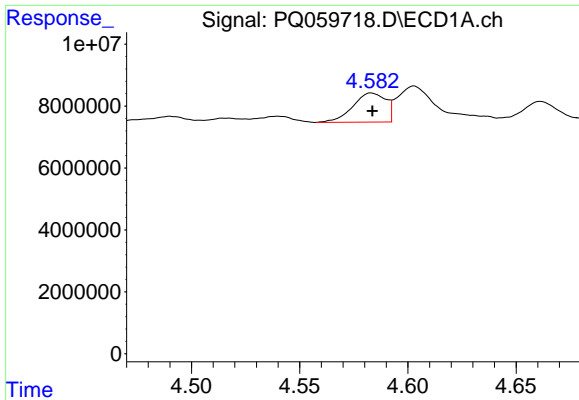
#1 Tetrachloro-m-xylene
 R.T.: 2.829 min
 Delta R.T.: 0.000 min
 Response: 169255277
 Conc: 21.23 ng/ml



#2 Decachlorobiphenyl
 R.T.: 8.653 min
 Delta R.T.: -0.003 min
 Response: 122674594
 Conc: 22.44 ng/ml



#2 Decachlorobiphenyl
 R.T.: 7.603 min
 Delta R.T.: 0.000 min
 Response: 182566086
 Conc: 21.73 ng/ml



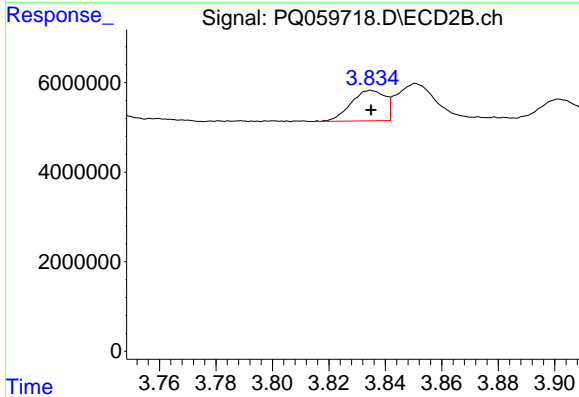
#3 AR-1016-1

R.T.: 4.583 min
 Delta R.T.: 0.000 min
 Response: 9950233
 Conc: 23.67 ng/ml

Instrument : ECD_Q
 Client Sample Id : LOD-MDL-WATER-01-QT4-2022

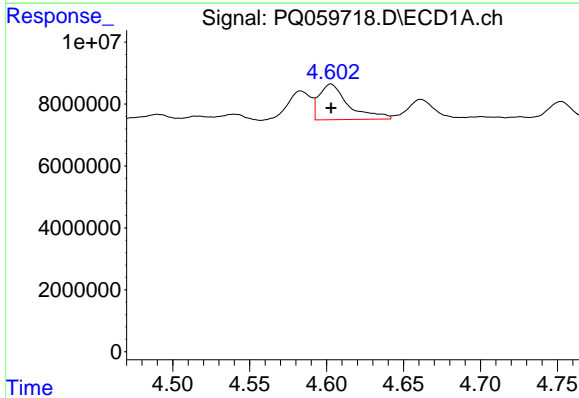
Manual Integrations
 APPROVED

Reviewed By :Yogesh Patel 10/24/2022
 Supervised By :Ankita Jodhani 10/24/2022



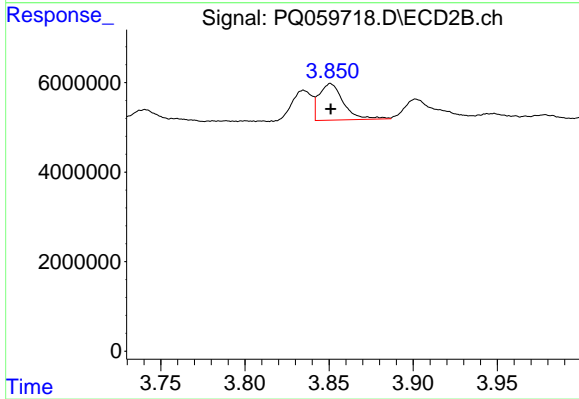
#3 AR-1016-1

R.T.: 3.835 min
 Delta R.T.: 0.000 min
 Response: 5692021
 Conc: 19.94 ng/ml



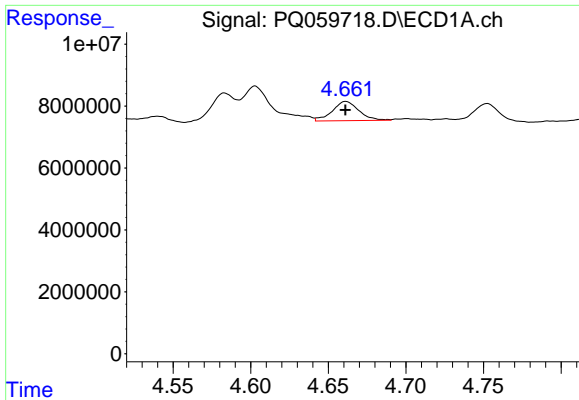
#4 AR-1016-2

R.T.: 4.603 min
 Delta R.T.: 0.000 min
 Response: 15268296
 Conc: 24.81 ng/ml



#4 AR-1016-2

R.T.: 3.851 min
 Delta R.T.: 0.000 min
 Response: 8254411
 Conc: 19.45 ng/ml



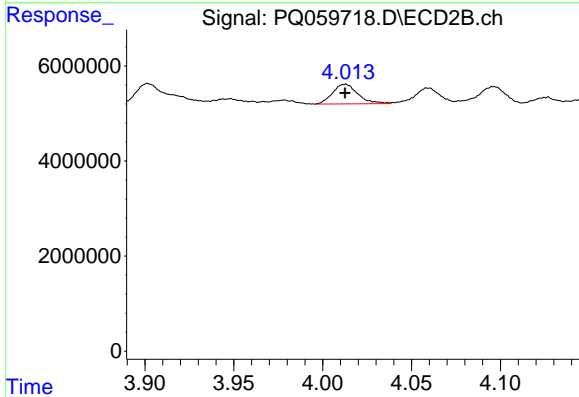
#5 AR-1016-3

R.T.: 4.661 min
 Delta R.T.: 0.000 min
 Response: 7448672
 Conc: 19.97 ng/ml

Instrument : ECD_Q
 ClientSampleId : LOD-MDL-WATER-01-QT4-2022

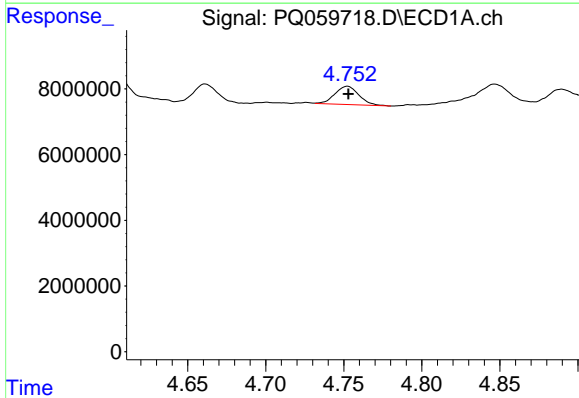
Manual Integrations
 APPROVED

Reviewed By :Yogesh Patel 10/24/2022
 Supervised By :Ankita Jodhani 10/24/2022



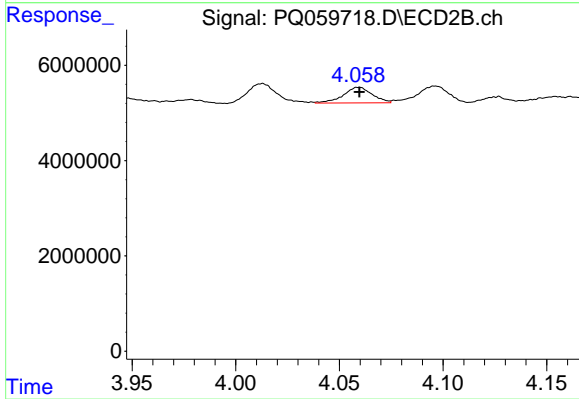
#5 AR-1016-3

R.T.: 4.013 min
 Delta R.T.: 0.000 min
 Response: 4095267
 Conc: 18.59 ng/ml



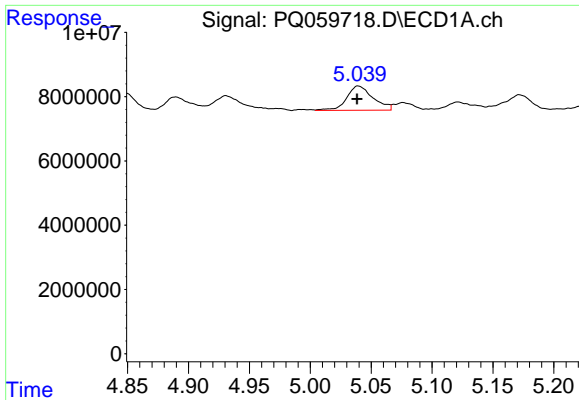
#6 AR-1016-4

R.T.: 4.752 min
 Delta R.T.: 0.000 min
 Response: 6002631
 Conc: 19.60 ng/ml



#6 AR-1016-4

R.T.: 4.059 min
 Delta R.T.: 0.000 min
 Response: 3182734
 Conc: 18.61 ng/ml



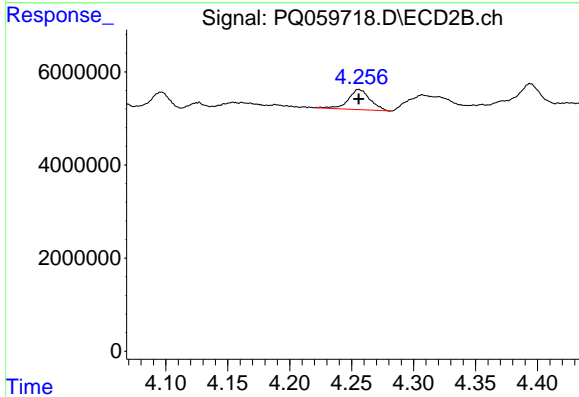
#7 AR-1016-5

R.T.: 5.039 min
 Delta R.T.: 0.000 min
 Response: 11359420
 Conc: 36.71 ng/ml

Instrument : ECD_Q
 ClientSampleId : LOD-MDL-WATER-01-QT4-2022

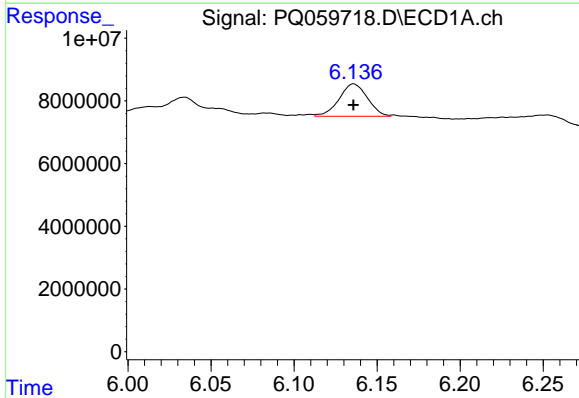
Manual Integrations
 APPROVED

Reviewed By :Yogesh Patel 10/24/2022
 Supervised By :Ankita Jodhani 10/24/2022



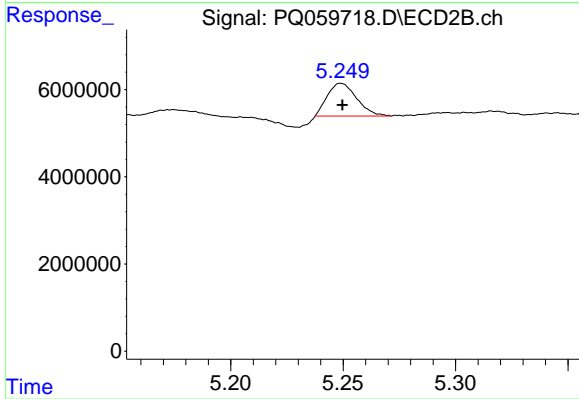
#7 AR-1016-5

R.T.: 4.256 min
 Delta R.T.: 0.000 min
 Response: 5318239
 Conc: 23.69 ng/ml



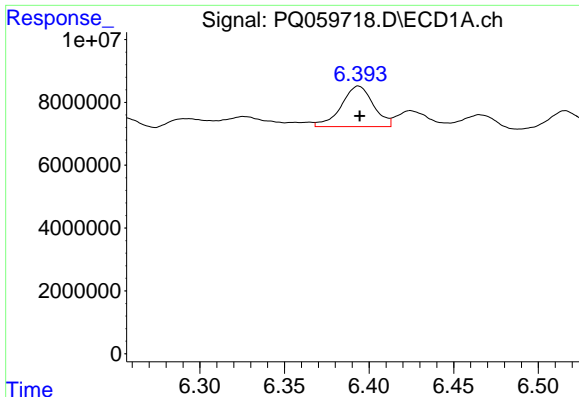
#31 AR-1260-1

R.T.: 6.136 min
 Delta R.T.: 0.000 min
 Response: 12153646
 Conc: 21.43 ng/ml m



#31 AR-1260-1

R.T.: 5.249 min
 Delta R.T.: -0.001 min
 Response: 6788749
 Conc: 14.96 ng/ml m



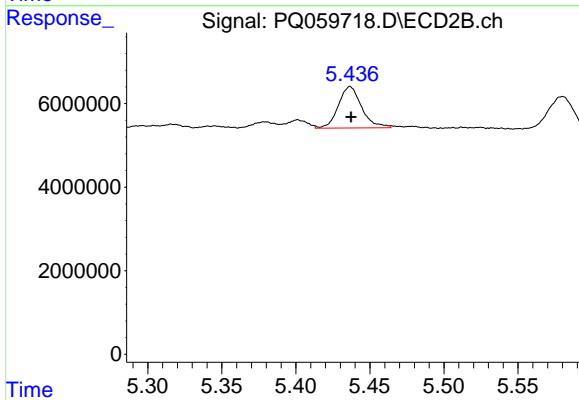
#32 AR-1260-2

R.T.: 6.393 min
 Delta R.T.: -0.001 min
 Response: 17054501
 Conc: 26.91 ng/ml

Instrument :
 ECD_Q
 ClientSampleId :
 LOD-MDL-WATER-01-QT4-2022

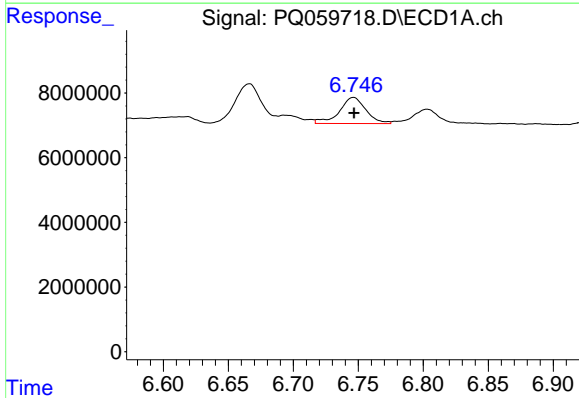
Manual Integrations
 APPROVED

Reviewed By :Yogesh Patel 10/24/2022
 Supervised By :Ankita Jodhani 10/24/2022



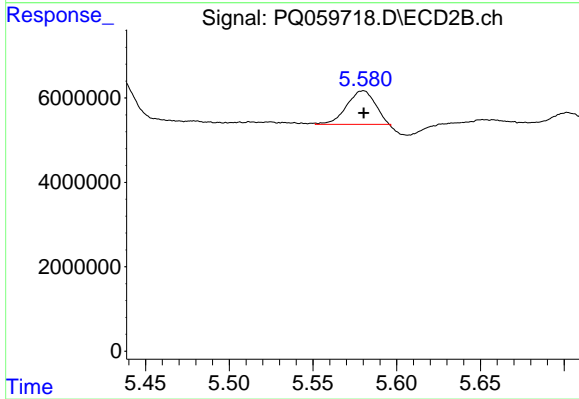
#32 AR-1260-2

R.T.: 5.436 min
 Delta R.T.: 0.000 min
 Response: 10853773
 Conc: 19.49 ng/ml m



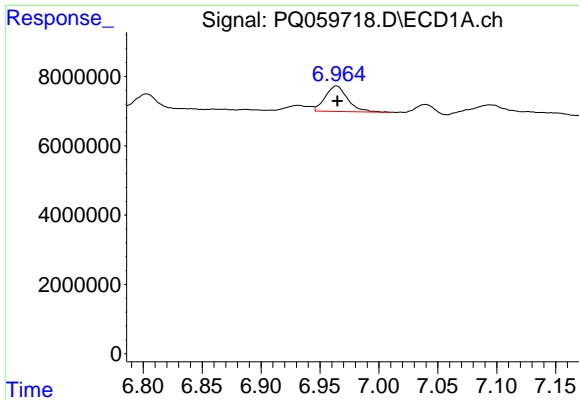
#33 AR-1260-3

R.T.: 6.746 min
 Delta R.T.: 0.000 min
 Response: 11464065
 Conc: 31.02 ng/ml



#33 AR-1260-3

R.T.: 5.580 min
 Delta R.T.: 0.000 min
 Response: 9434314
 Conc: 17.76 ng/ml m



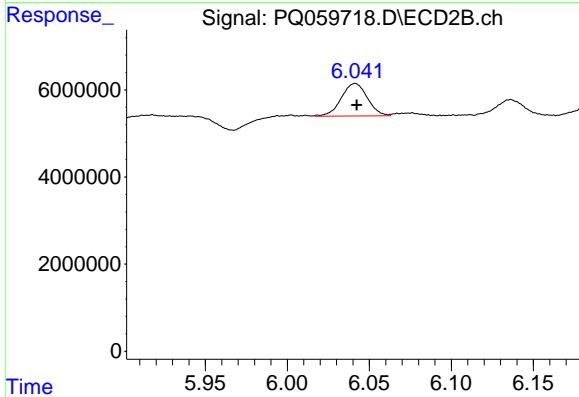
#34 AR-1260-4

R.T.: 6.964 min
 Delta R.T.: 0.000 min
 Response: 9693124
 Conc: 23.32 ng/ml

Instrument : ECD_Q
 ClientSampleId : LOD-MDL-WATER-01-QT4-2022

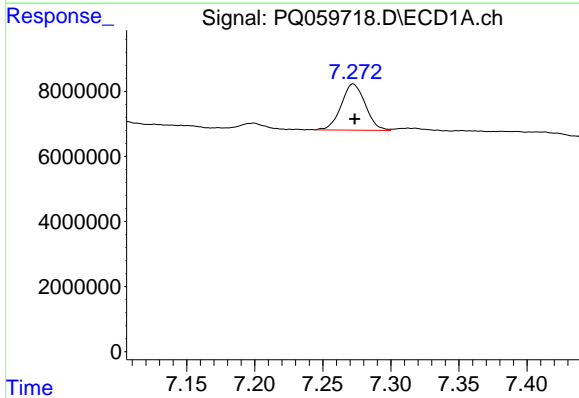
Manual Integrations
 APPROVED

Reviewed By :Yogesh Patel 10/24/2022
 Supervised By :Ankita Jodhani 10/24/2022



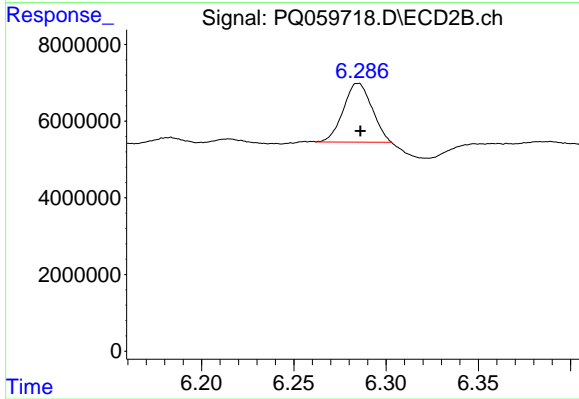
#34 AR-1260-4

R.T.: 6.041 min
 Delta R.T.: -0.001 min
 Response: 8297722
 Conc: 21.00 ng/ml m



#35 AR-1260-5

R.T.: 7.272 min
 Delta R.T.: -0.001 min
 Response: 17563592
 Conc: 23.60 ng/ml



#35 AR-1260-5

R.T.: 6.286 min
 Delta R.T.: 0.000 min
 Response: 16622994
 Conc: 16.97 ng/ml m