

Data Path : Z:\pestpcbsrv\HPCHEM1\ECD_Q\Data\PQ102222\
 Data File : PQ059720.D
 Signal(s) : Signal #1: ECD1A.ch Signal #2: ECD2B.ch
 Acq On : 21 Oct 2022 10:15
 Operator : YP\AJ
 Sample : N4955-07
 Misc : AR1232 LOD 25 PPB
 ALS Vial : 7 Sample Multiplier: 1

Instrument :
 ECD_Q
ClientSampleId :
 LOD-MDL-WATER-01-QT4-2022

Integration File signal 1: autoint1.e
 Integration File signal 2: autoint2.e
 Quant Time: Oct 22 03:49:09 2022
 Quant Method : Z:\pestpcbsrv\HPCHEM1\ECD_Q\Method\PQ102122.M
 Quant Title : GC EXTRACTABLES
 QLast Update : Fri Oct 21 08:02:10 2022
 Response via : Initial Calibration
 Integrator: ChemStation

Volume Inj. : 2 µl
 Signal #1 Phase : ZB-MR1 Signal #2 Phase: ZB-MR2
 Signal #1 Info : 30Mx0.32mmx 0.50µ Signal #2 Info : 30M x 0.32mm x 0.25µm

Compound	RT#1	RT#2	Resp#1	Resp#2	ng/ml	ng/ml

System Monitoring Compounds						
1) SA Tetrachlo...	3.483	2.829	213.8E6	173.4E6	18.905	21.757
2) SA Decachlor...	8.654	7.602	115.8E6	172.3E6	21.183	20.513
Target Compounds						
11) L3 AR-1232-1	3.832	3.176	9196437	5944050	37.662	33.961
12) L3 AR-1232-2	4.326	3.850	3669151	4701061	24.044	24.392
13) L3 AR-1232-3	4.602	4.012	8198840	2526263	29.641	25.437
14) L3 AR-1232-4	4.754	4.093	2515550	2775686	17.651	33.500 #
15) L3 AR-1232-5	4.849	4.255	8585556	6575402	92.531	65.751 #

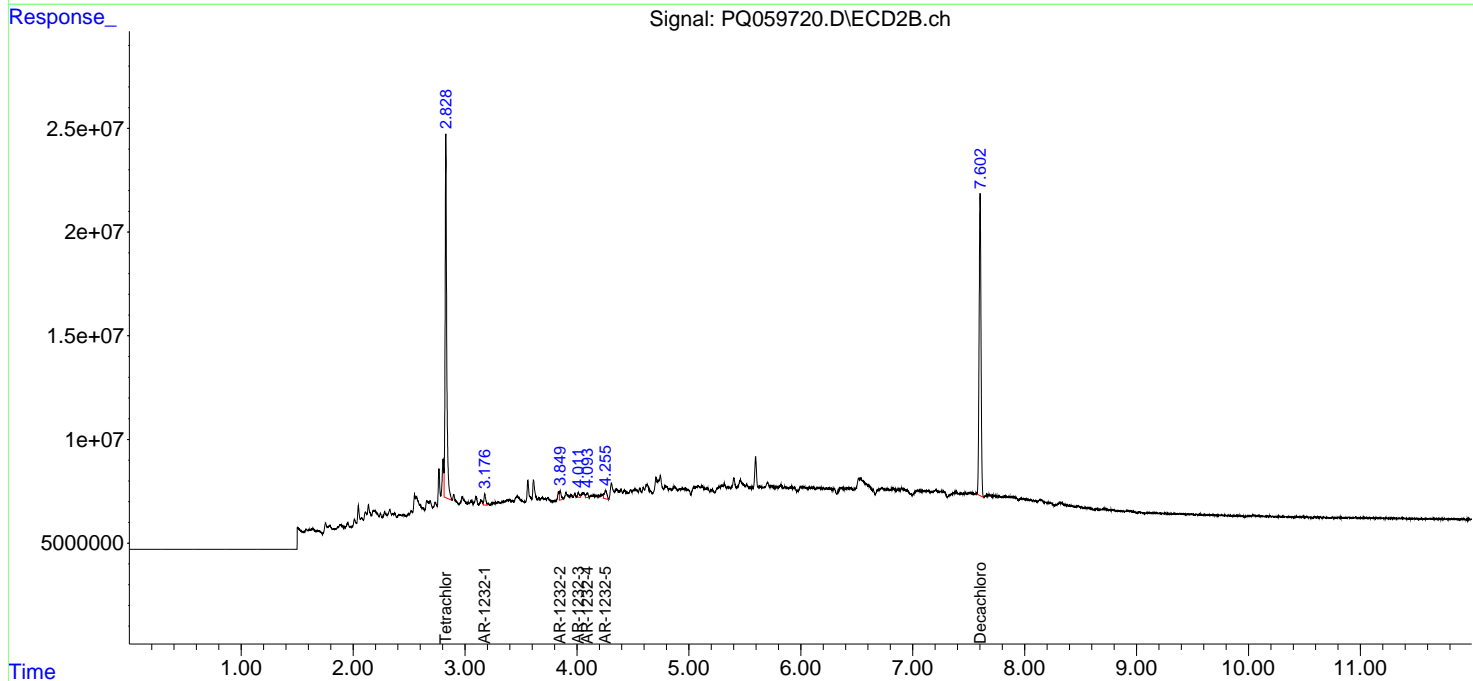
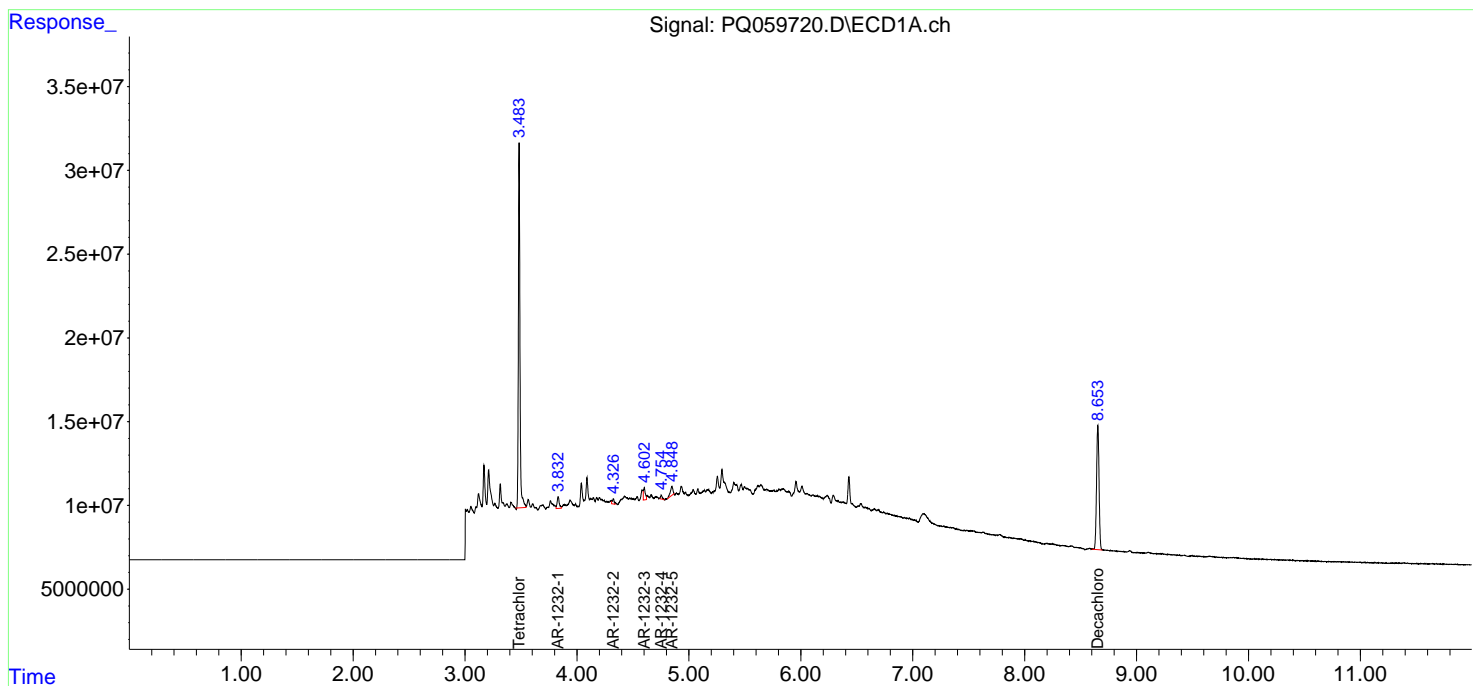
(f)=RT Delta > 1/2 Window (#)=Amounts differ by > 25% (m)=manual int.

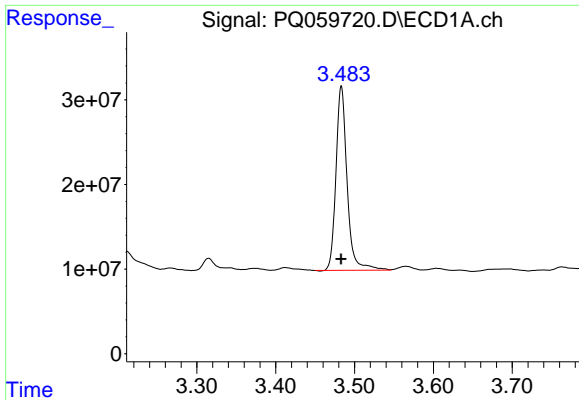
Data Path : Z:\pestpcbsrv\HPCHEM1\ECD_Q\Data\PQ102222\
 Data File : PQ059720.D
 Signal(s) : Signal #1: ECD1A.ch Signal #2: ECD2B.ch
 Acq On : 21 Oct 2022 10:15
 Operator : YP\AJ
 Sample : N4955-07
 Misc : AR1232 LOD 25 PPB
 ALS Vial : 7 Sample Multiplier: 1

Instrument :
 ECD_Q
ClientSampleId :
 LOD-MDL-WATER-01-QT4-2022

Integration File signal 1: autoint1.e
 Integration File signal 2: autoint2.e
 Quant Time: Oct 22 03:49:09 2022
 Quant Method : Z:\pestpcbsrv\HPCHEM1\ECD_Q\Method\PQ102122.M
 Quant Title : GC EXTRACTABLES
 QLast Update : Fri Oct 21 08:02:10 2022
 Response via : Initial Calibration
 Integrator: ChemStation

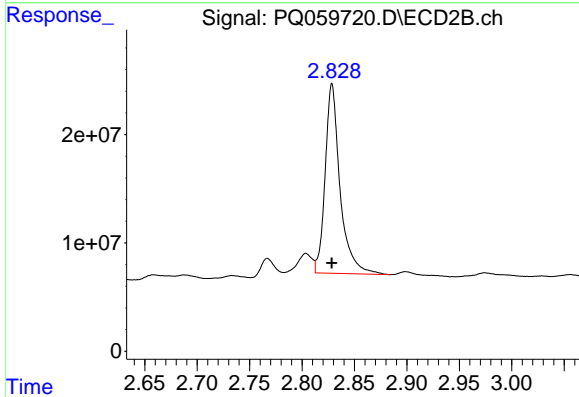
Volume Inj. : 2 µl
 Signal #1 Phase : ZB-MR1 Signal #2 Phase: ZB-MR2
 Signal #1 Info : 30Mx0.32mmx 0.50µ Signal #2 Info : 30M x 0.32mm x 0.25µm



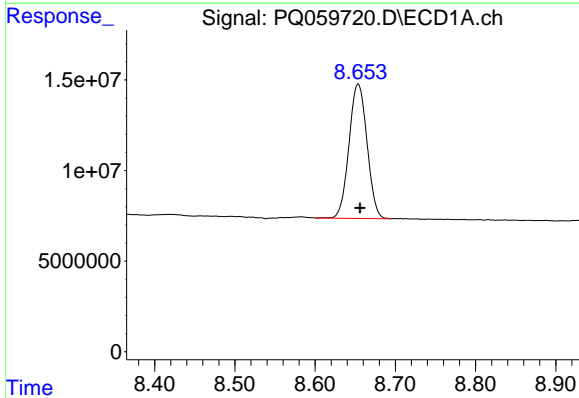


#1 Tetrachloro-m-xylene
 R.T.: 3.483 min
 Delta R.T.: 0.000 min
 Response: 213779133
 Conc: 18.90 ng/ml

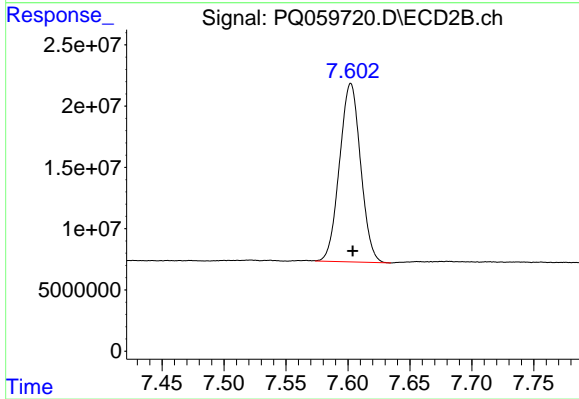
Instrument :
 ECD_Q
 ClientSampleId :
 LOD-MDL-WATER-01-QT4-2022



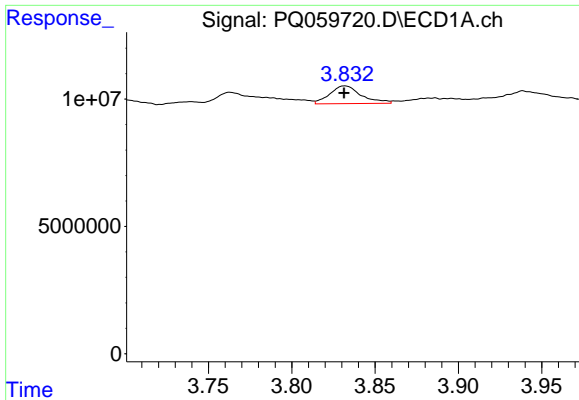
#1 Tetrachloro-m-xylene
 R.T.: 2.829 min
 Delta R.T.: 0.000 min
 Response: 173443798
 Conc: 21.76 ng/ml



#2 Decachlorobiphenyl
 R.T.: 8.654 min
 Delta R.T.: -0.002 min
 Response: 115820968
 Conc: 21.18 ng/ml



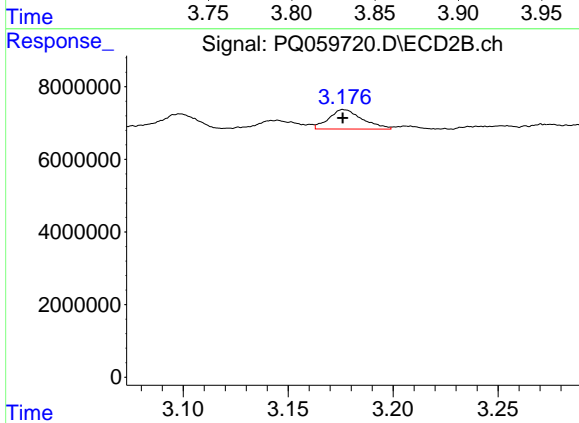
#2 Decachlorobiphenyl
 R.T.: 7.602 min
 Delta R.T.: -0.001 min
 Response: 172342105
 Conc: 20.51 ng/ml



#11 AR-1232-1

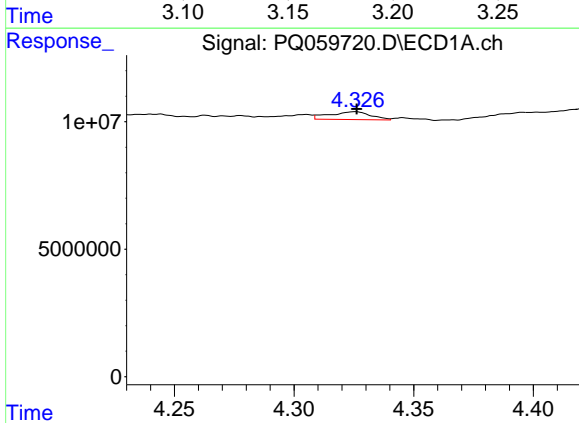
R.T.: 3.832 min
 Delta R.T.: 0.000 min
 Response: 9196437
 Conc: 37.66 ng/ml

Instrument :
 ECD_Q
 ClientSampleId :
 LOD-MDL-WATER-01-QT4-2022



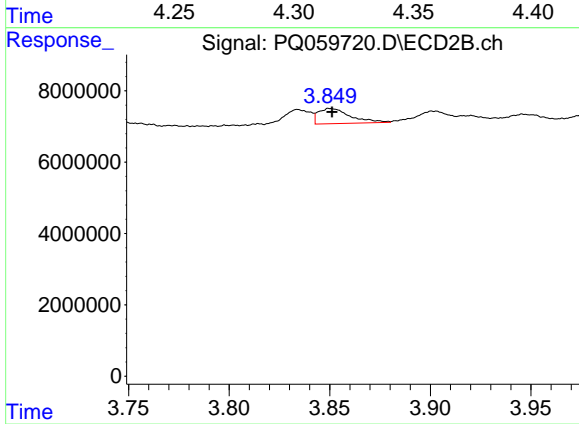
#11 AR-1232-1

R.T.: 3.176 min
 Delta R.T.: 0.000 min
 Response: 5944050
 Conc: 33.96 ng/ml



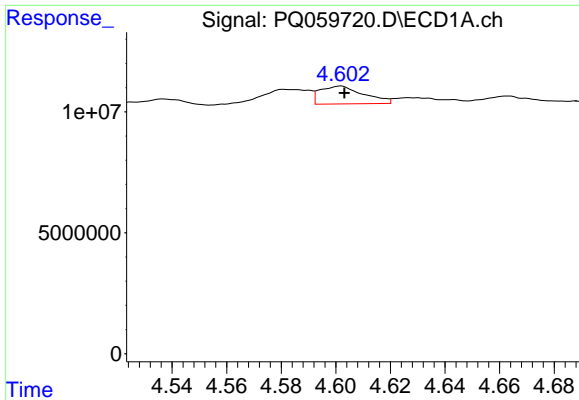
#12 AR-1232-2

R.T.: 4.326 min
 Delta R.T.: 0.000 min
 Response: 3669151
 Conc: 24.04 ng/ml



#12 AR-1232-2

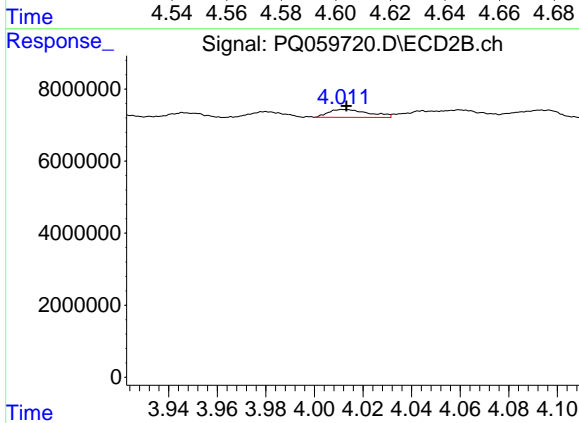
R.T.: 3.850 min
 Delta R.T.: -0.001 min
 Response: 4701061
 Conc: 24.39 ng/ml



#13 AR-1232-3

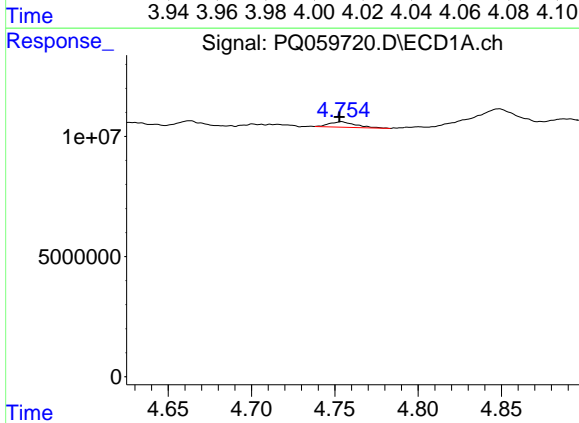
R.T.: 4.602 min
 Delta R.T.: -0.001 min
 Response: 8198840
 Conc: 29.64 ng/ml

Instrument :
 ECD_Q
 ClientSampleId :
 LOD-MDL-WATER-01-QT4-2022



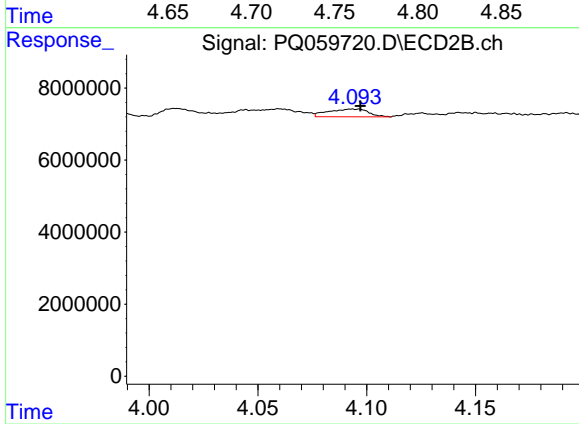
#13 AR-1232-3

R.T.: 4.012 min
 Delta R.T.: -0.001 min
 Response: 2526263
 Conc: 25.44 ng/ml



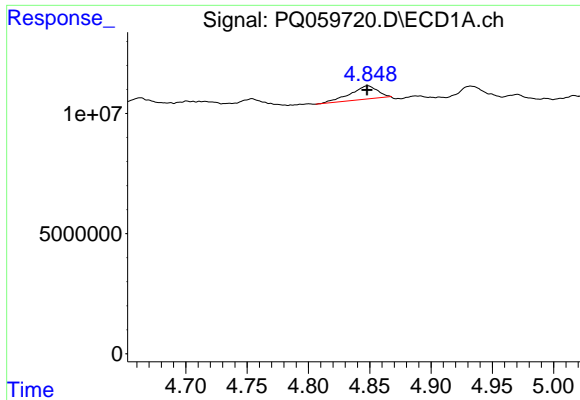
#14 AR-1232-4

R.T.: 4.754 min
 Delta R.T.: 0.001 min
 Response: 2515550
 Conc: 17.65 ng/ml



#14 AR-1232-4

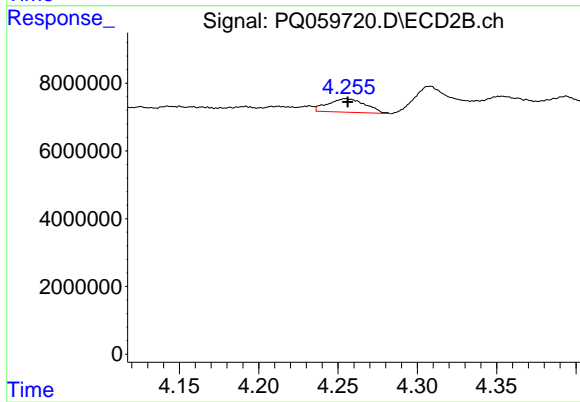
R.T.: 4.093 min
 Delta R.T.: -0.004 min
 Response: 2775686
 Conc: 33.50 ng/ml



#15 AR-1232-5

R.T.: 4.849 min
Delta R.T.: 0.000 min
Response: 8585556
Conc: 92.53 ng/ml

Instrument :
ECD_Q
ClientSampleId :
LOD-MDL-WATER-01-QT4-2022



#15 AR-1232-5

R.T.: 4.255 min
Delta R.T.: -0.001 min
Response: 6575402
Conc: 65.75 ng/ml