

Data Path : Z:\pestpcbsrv\HPCHEM1\ECD\_Q\Data\PQ102222\  
 Data File : PQ059725.D  
 Signal(s) : Signal #1: ECD1A.ch Signal #2: ECD2B.ch  
 Acq On : 21 Oct 2022 11:28  
 Operator : YP\AJ  
 Sample : N4955-07  
 Misc : AR1268 LOD 25 PPB  
 ALS Vial : 12 Sample Multiplier: 1

**Instrument :**  
 ECD\_Q  
**ClientSampleId :**  
 LOD-MDL-WATER-01-QT4-2022

Integration File signal 1: autoint1.e  
 Integration File signal 2: autoint2.e  
 Quant Time: Oct 22 03:55:28 2022  
 Quant Method : Z:\pestpcbsrv\HPCHEM1\ECD\_Q\Method\PQ102122.M  
 Quant Title : GC EXTRACTABLES  
 QLast Update : Fri Oct 21 08:02:10 2022  
 Response via : Initial Calibration  
 Integrator: ChemStation

Volume Inj. : 2 µl  
 Signal #1 Phase : ZB-MR1 Signal #2 Phase: ZB-MR2  
 Signal #1 Info : 30Mx0.32mmx 0.50µ Signal #2 Info : 30M x 0.32mm x 0.25µm

Compound	RT#1	RT#2	Resp#1	Resp#2	ng/ml	ng/ml
-----						
System Monitoring Compounds						
1) SA Tetrachlo...	3.483	2.829	235.6E6	169.4E6	20.837	21.255
2) SA Decachlor...	8.654	7.603	128.3E6	192.5E6	23.463	22.914
Target Compounds						
41) L9 AR-1268-1	7.545	6.564	22779572	33142839	24.067	24.868
42) L9 AR-1268-2	7.624	6.626	17055878	23208312	19.981	19.018
43) L9 AR-1268-3	7.805	6.828	19819601	20667358	28.655	19.670 #
44) L9 AR-1268-4	8.124	7.116	6060095	8558612	21.045	19.520
45) L9 AR-1268-5	8.419	7.385	43415410	64562231	21.300	19.079
-----						

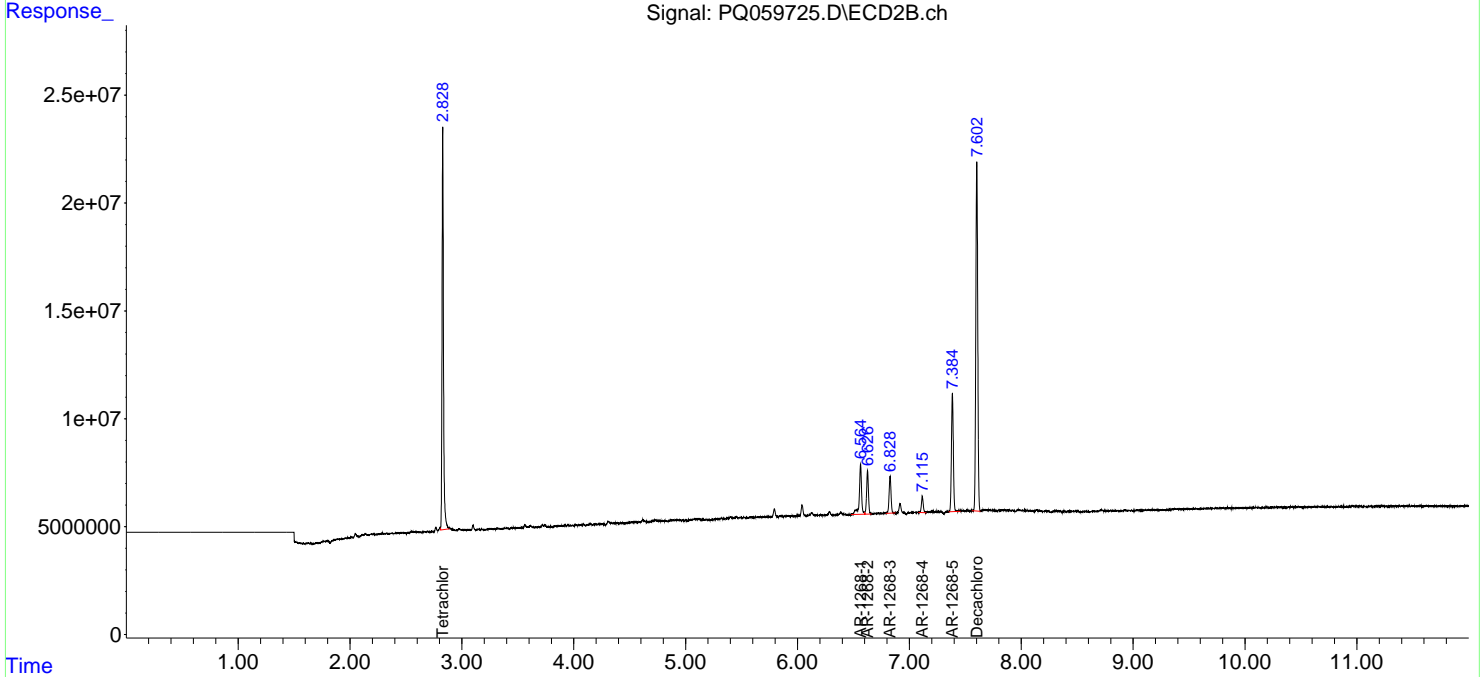
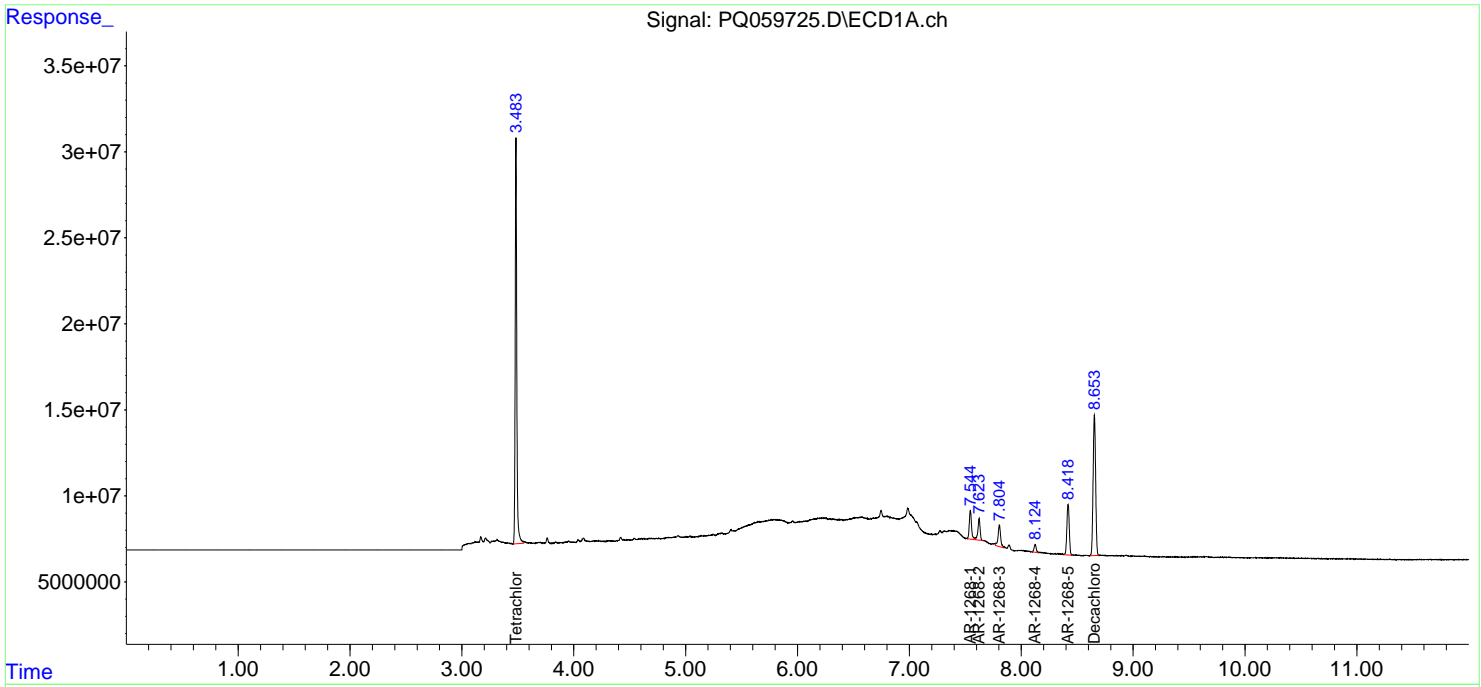
(f)=RT Delta > 1/2 Window (#)=Amounts differ by > 25% (m)=manual int.

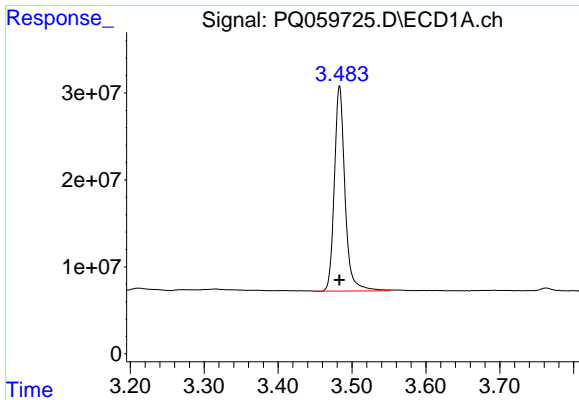
Data Path : Z:\pestpcbsrv\HPCHEM1\ECD\_Q\Data\PQ102222\  
 Data File : PQ059725.D  
 Signal(s) : Signal #1: ECD1A.ch Signal #2: ECD2B.ch  
 Acq On : 21 Oct 2022 11:28  
 Operator : YP\AJ  
 Sample : N4955-07  
 Misc : AR1268 LOD 25 PPB  
 ALS Vial : 12 Sample Multiplier: 1

**Instrument :**  
 ECD\_Q  
**ClientSampleId :**  
 LOD-MDL-WATER-01-QT4-2022

Integration File signal 1: autoint1.e  
 Integration File signal 2: autoint2.e  
 Quant Time: Oct 22 03:55:28 2022  
 Quant Method : Z:\pestpcbsrv\HPCHEM1\ECD\_Q\Method\PQ102122.M  
 Quant Title : GC EXTRACTABLES  
 QLast Update : Fri Oct 21 08:02:10 2022  
 Response via : Initial Calibration  
 Integrator: ChemStation

Volume Inj. : 2 µl  
 Signal #1 Phase : ZB-MR1 Signal #2 Phase: ZB-MR2  
 Signal #1 Info : 30Mx0.32mmx 0.50µ Signal #2 Info : 30M x 0.32mm x 0.25µm

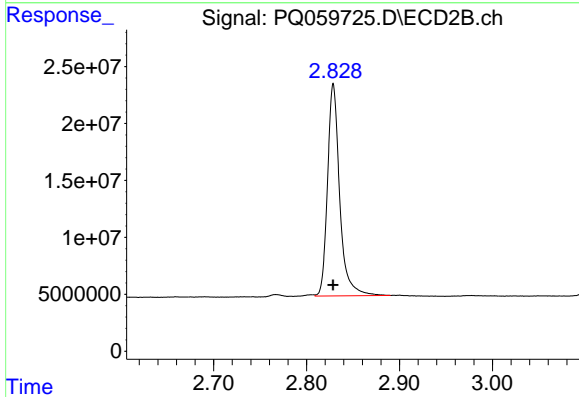




#1 Tetrachloro-m-xylene

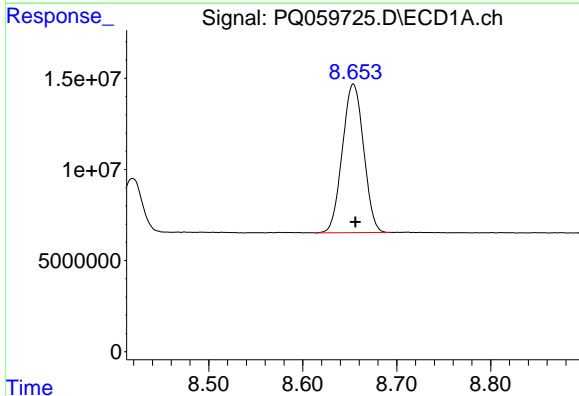
R.T.: 3.483 min  
 Delta R.T.: 0.000 min  
 Response: 235630642  
 Conc: 20.84 ng/ml

Instrument :  
 ECD\_Q  
 ClientSampleId :  
 LOD-MDL-WATER-01-QT4-2022



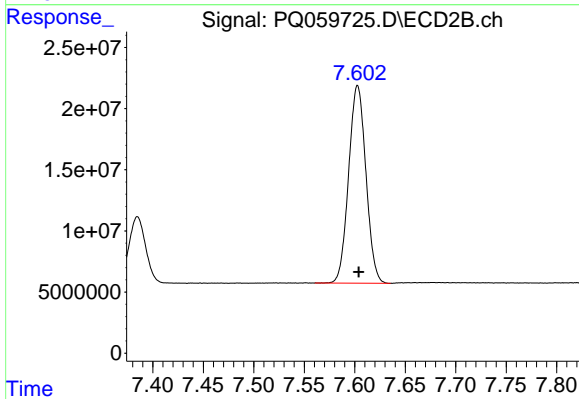
#1 Tetrachloro-m-xylene

R.T.: 2.829 min  
 Delta R.T.: 0.000 min  
 Response: 169445034  
 Conc: 21.26 ng/ml



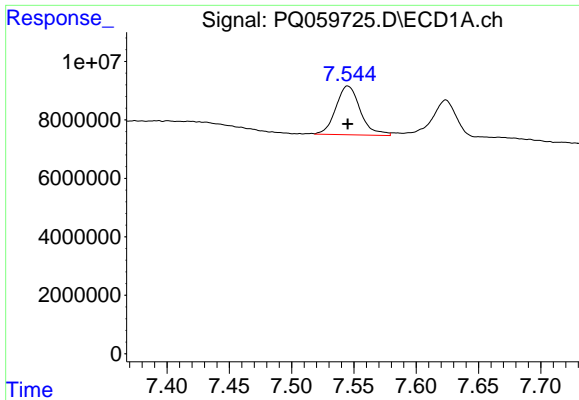
#2 Decachlorobiphenyl

R.T.: 8.654 min  
 Delta R.T.: -0.002 min  
 Response: 128284534  
 Conc: 23.46 ng/ml



#2 Decachlorobiphenyl

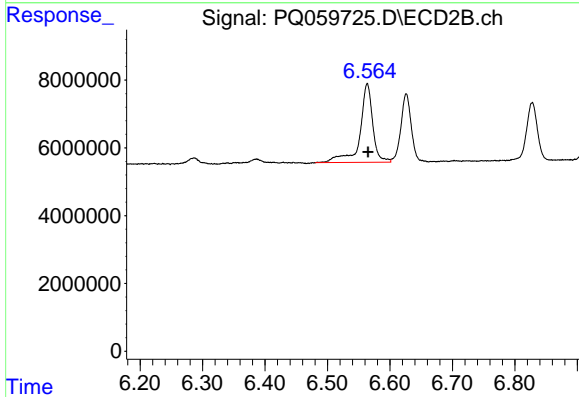
R.T.: 7.603 min  
 Delta R.T.: 0.000 min  
 Response: 192517230  
 Conc: 22.91 ng/ml



#41 AR-1268-1

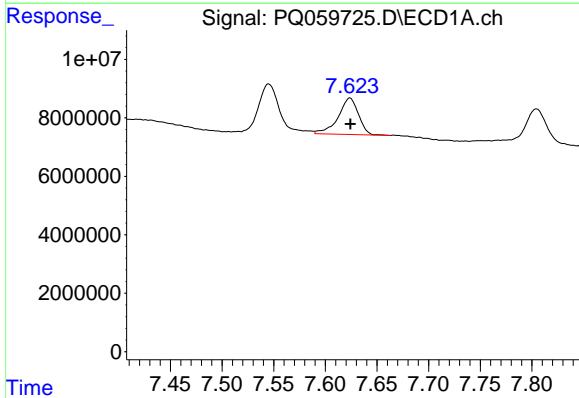
R.T.: 7.545 min  
 Delta R.T.: 0.000 min  
 Response: 22779572  
 Conc: 24.07 ng/ml

Instrument :  
 ECD\_Q  
 ClientSampleId :  
 LOD-MDL-WATER-01-QT4-2022



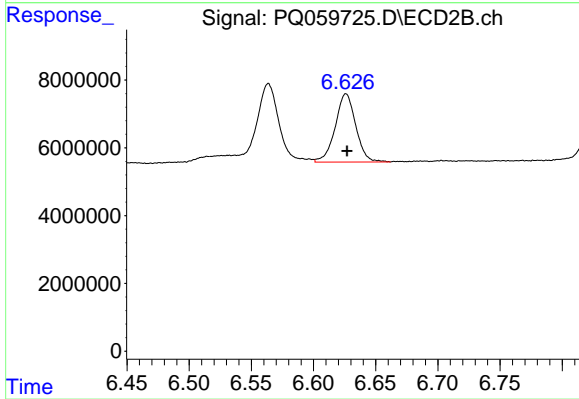
#41 AR-1268-1

R.T.: 6.564 min  
 Delta R.T.: 0.000 min  
 Response: 33142839  
 Conc: 24.87 ng/ml



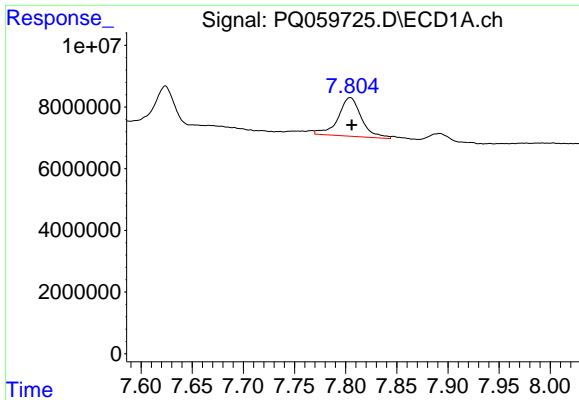
#42 AR-1268-2

R.T.: 7.624 min  
 Delta R.T.: 0.000 min  
 Response: 17055878  
 Conc: 19.98 ng/ml



#42 AR-1268-2

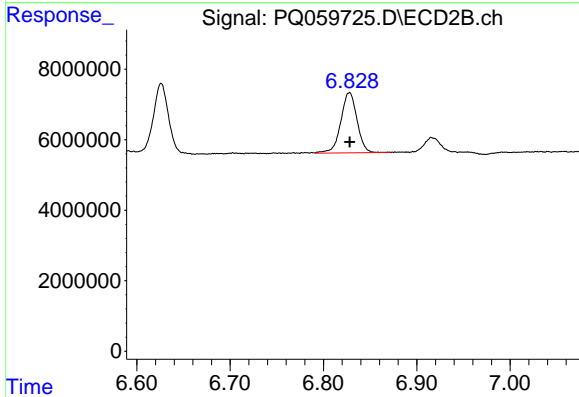
R.T.: 6.626 min  
 Delta R.T.: 0.000 min  
 Response: 23208312  
 Conc: 19.02 ng/ml



#43 AR-1268-3

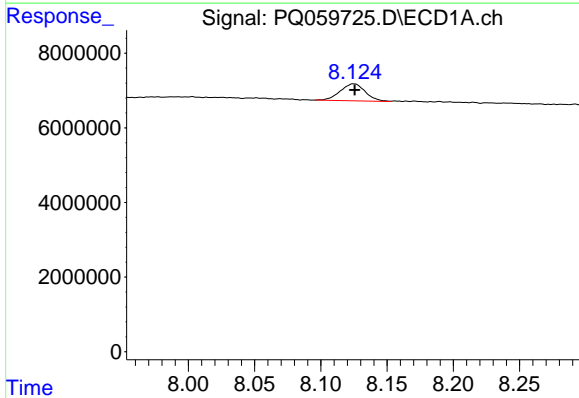
R.T.: 7.805 min  
 Delta R.T.: -0.001 min  
 Response: 19819601  
 Conc: 28.66 ng/ml

Instrument :  
 ECD\_Q  
 ClientSampleId :  
 LOD-MDL-WATER-01-QT4-2022



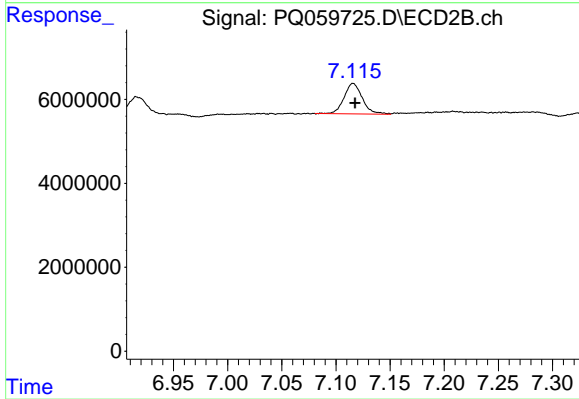
#43 AR-1268-3

R.T.: 6.828 min  
 Delta R.T.: 0.000 min  
 Response: 20667358  
 Conc: 19.67 ng/ml



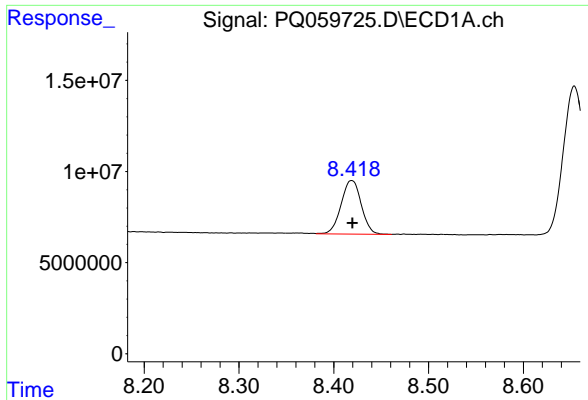
#44 AR-1268-4

R.T.: 8.124 min  
 Delta R.T.: -0.001 min  
 Response: 6060095  
 Conc: 21.05 ng/ml



#44 AR-1268-4

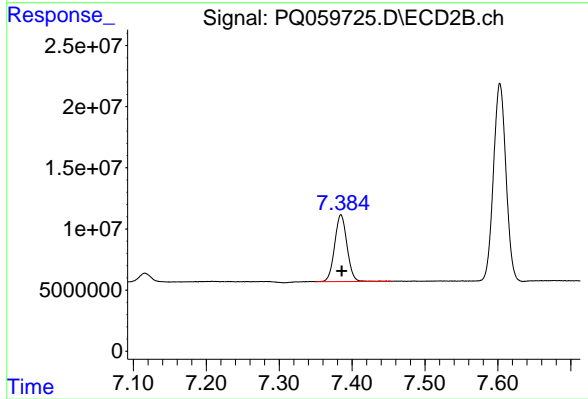
R.T.: 7.116 min  
 Delta R.T.: -0.002 min  
 Response: 8558612  
 Conc: 19.52 ng/ml



#45 AR-1268-5

R.T.: 8.419 min  
Delta R.T.: 0.000 min  
Response: 43415410  
Conc: 21.30 ng/ml

Instrument :  
ECD\_Q  
ClientSampleId :  
LOD-MDL-WATER-01-QT4-2022



#45 AR-1268-5

R.T.: 7.385 min  
Delta R.T.: -0.001 min  
Response: 64562231  
Conc: 19.08 ng/ml