

Data Path : Z:\pestpcbsrv\HPCHEM1\ECD_Q\Data\PQ102222\
 Data File : PQ059726.D
 Signal(s) : Signal #1: ECD1A.ch Signal #2: ECD2B.ch
 Acq On : 21 Oct 2022 11:43
 Operator : YP\AJ
 Sample : AR1660CCC500
 Misc :
 ALS Vial : 3 Sample Multiplier: 1

Instrument :
 ECD_Q
 ClientSampleId :
 AR1660CCC500

Integration File signal 1: autoint1.e
 Integration File signal 2: autoint2.e
 Quant Time: Oct 22 03:56:54 2022
 Quant Method : Z:\pestpcbsrv\HPCHEM1\ECD_Q\Method\PQ102122.M
 Quant Title : GC EXTRACTABLES
 QLast Update : Fri Oct 21 08:02:10 2022
 Response via : Initial Calibration
 Integrator: ChemStation

Volume Inj. : 2 µl
 Signal #1 Phase : ZB-MR1 Signal #2 Phase: ZB-MR2
 Signal #1 Info : 30Mx0.32mmx 0.50µ Signal #2 Info : 30M x 0.32mm x 0.25µm

Compound	RT#1	RT#2	Resp#1	Resp#2	ng/ml	ng/ml

System Monitoring Compounds						
1) SA Tetrachlo...	3.483	2.829	557.7E6	407.2E6	49.321	51.084
2) SA Decachlor...	8.652	7.602	273.1E6	421.8E6	49.945	50.200
Target Compounds						
3) L1 AR-1016-1	4.582	3.835	203.9E6	142.7E6	485.049	499.978
4) L1 AR-1016-2	4.602	3.851	298.3E6	212.3E6	484.685	500.147
5) L1 AR-1016-3	4.660	4.012	178.2E6	109.0E6	477.819	494.669
6) L1 AR-1016-4	4.752	4.059	148.6E6	83165381	485.301	486.337
7) L1 AR-1016-5	5.037	4.255	150.7E6	109.4E6	486.868	487.361
31) L7 AR-1260-1	6.135	5.248	264.3E6	221.2E6	466.124	487.328
32) L7 AR-1260-2	6.393	5.436	300.9E6	274.9E6	474.852	493.692
33) L7 AR-1260-3	6.746	5.579	174.5E6	260.1E6	472.194	489.670
34) L7 AR-1260-4	6.963	6.041	201.5E6	193.6E6	484.867	489.924
35) L7 AR-1260-5	7.272	6.285	364.0E6	481.6E6	489.192	491.660

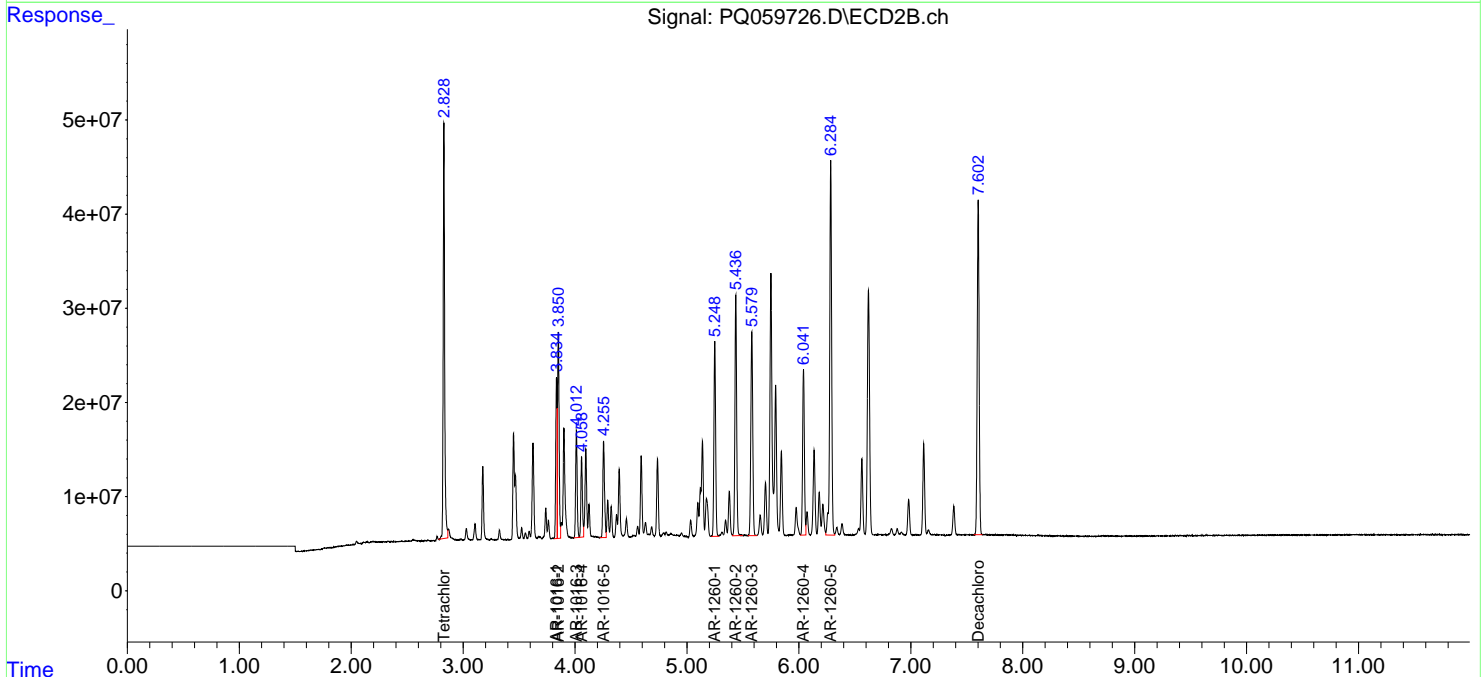
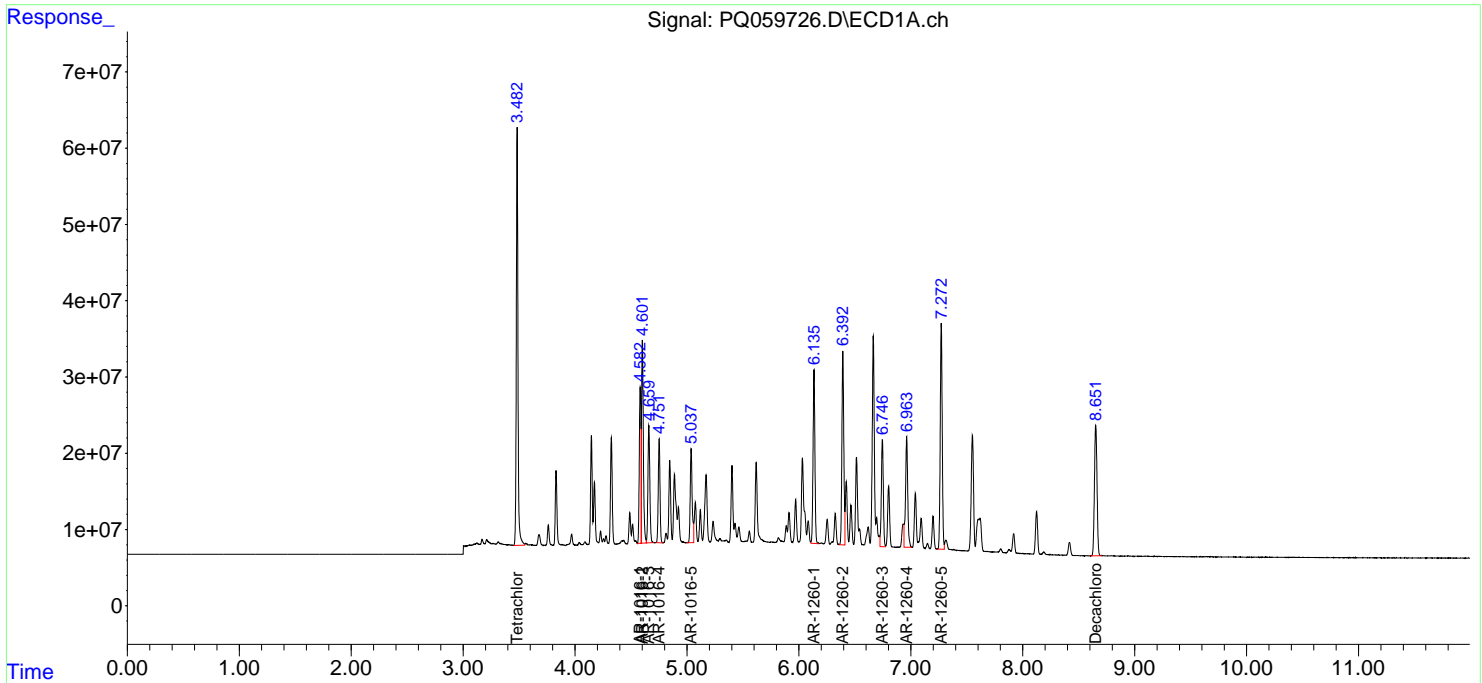
(f)=RT Delta > 1/2 Window (#)=Amounts differ by > 25% (m)=manual int.

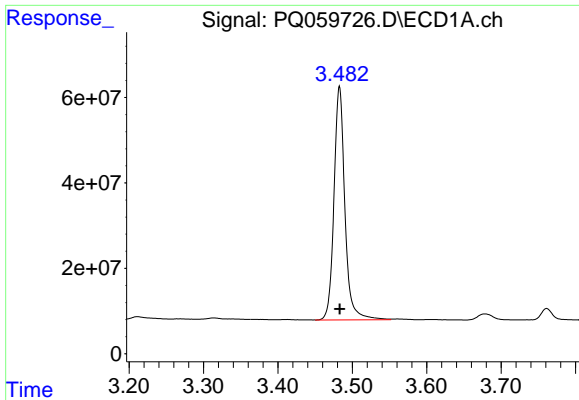
Data Path : Z:\pestpcbsrv\HPCHEM1\ECD_Q\Data\PQ102222\
 Data File : PQ059726.D
 Signal(s) : Signal #1: ECD1A.ch Signal #2: ECD2B.ch
 Acq On : 21 Oct 2022 11:43
 Operator : YP\AJ
 Sample : AR1660CCC500
 Misc :
 ALS Vial : 3 Sample Multiplier: 1

Instrument :
 ECD_Q
 ClientSampleId :
 AR1660CCC500

Integration File signal 1: autoint1.e
 Integration File signal 2: autoint2.e
 Quant Time: Oct 22 03:56:54 2022
 Quant Method : Z:\pestpcbsrv\HPCHEM1\ECD_Q\Method\PQ102122.M
 Quant Title : GC EXTRACTABLES
 QLast Update : Fri Oct 21 08:02:10 2022
 Response via : Initial Calibration
 Integrator: ChemStation

Volume Inj. : 2 µl
 Signal #1 Phase : ZB-MR1 Signal #2 Phase: ZB-MR2
 Signal #1 Info : 30Mx0.32mmx 0.50µ Signal #2 Info : 30M x 0.32mm x 0.25µm

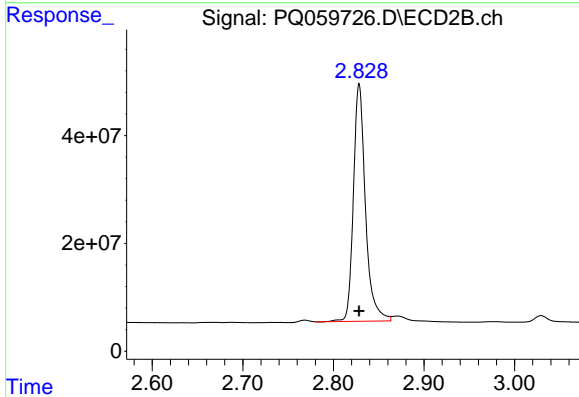




#1 Tetrachloro-m-xylene

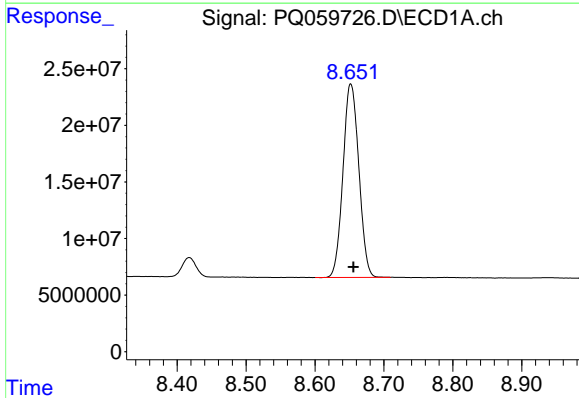
R.T.: 3.483 min
 Delta R.T.: 0.000 min
 Response: 557733458
 Conc: 49.32 ng/ml

Instrument :
 ECD_Q
 ClientSampleId :
 AR1660CCC500



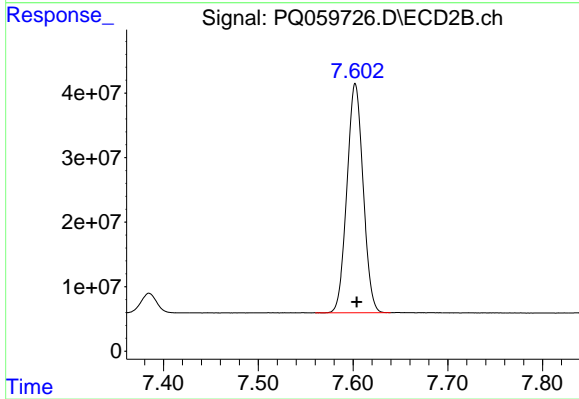
#1 Tetrachloro-m-xylene

R.T.: 2.829 min
 Delta R.T.: 0.000 min
 Response: 407233049
 Conc: 51.08 ng/ml



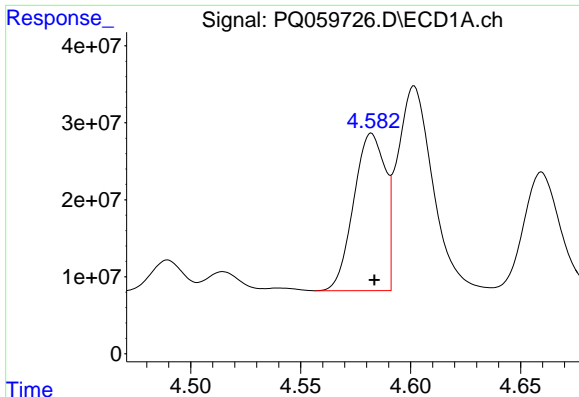
#2 Decachlorobiphenyl

R.T.: 8.652 min
 Delta R.T.: -0.004 min
 Response: 273079075
 Conc: 49.94 ng/ml



#2 Decachlorobiphenyl

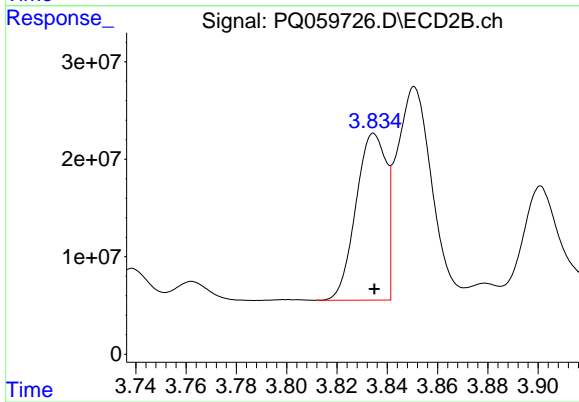
R.T.: 7.602 min
 Delta R.T.: -0.001 min
 Response: 421770639
 Conc: 50.20 ng/ml



#3 AR-1016-1

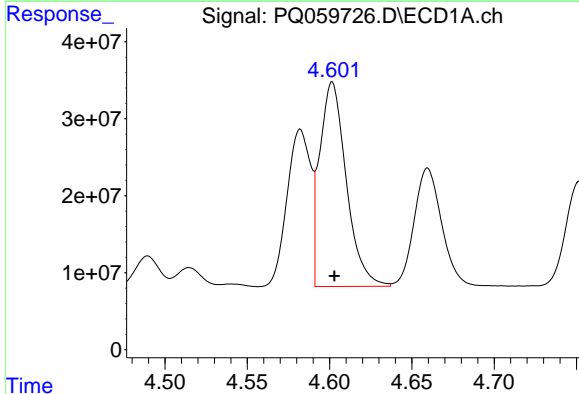
R.T.: 4.582 min
 Delta R.T.: -0.001 min
 Response: 203944138
 Conc: 485.05 ng/ml

Instrument :
 ECD_Q
 ClientSampleId :
 AR1660CCC500



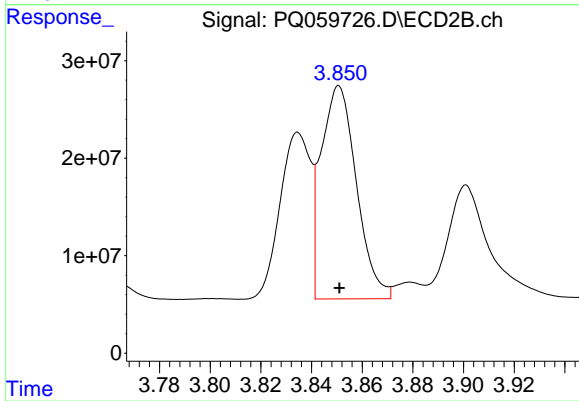
#3 AR-1016-1

R.T.: 3.835 min
 Delta R.T.: 0.000 min
 Response: 142706628
 Conc: 499.98 ng/ml



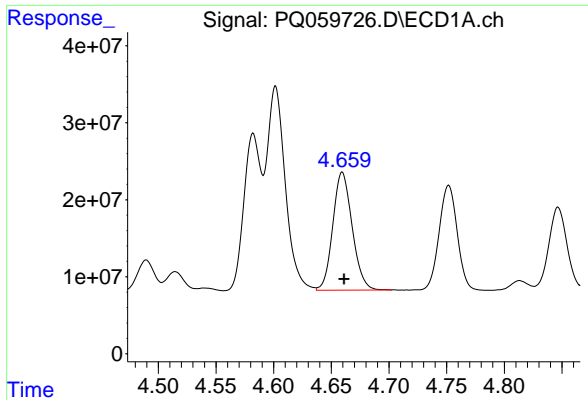
#4 AR-1016-2

R.T.: 4.602 min
 Delta R.T.: -0.001 min
 Response: 298253942
 Conc: 484.69 ng/ml



#4 AR-1016-2

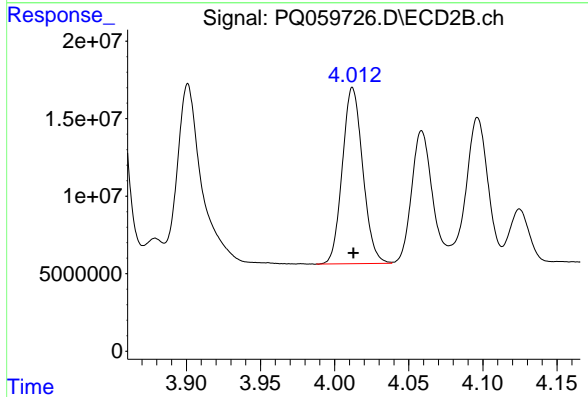
R.T.: 3.851 min
 Delta R.T.: 0.000 min
 Response: 212255469
 Conc: 500.15 ng/ml



#5 AR-1016-3

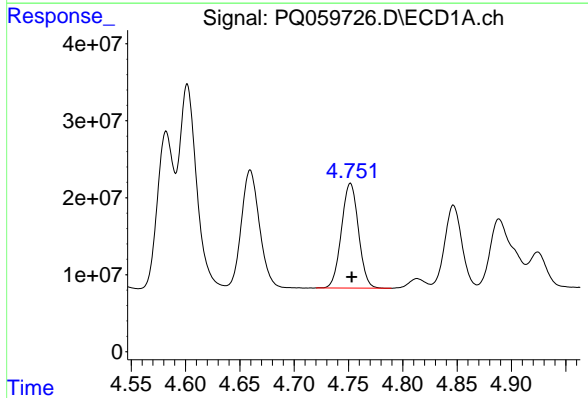
R.T.: 4.660 min
 Delta R.T.: -0.001 min
 Response: 178213660
 Conc: 477.82 ng/ml

Instrument :
 ECD_Q
 ClientSampleId :
 AR1660CCC500



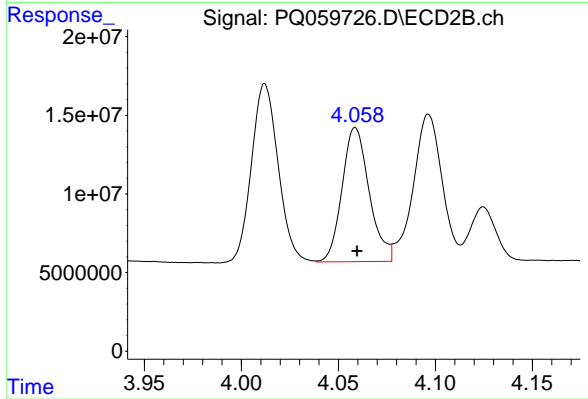
#5 AR-1016-3

R.T.: 4.012 min
 Delta R.T.: 0.000 min
 Response: 108975213
 Conc: 494.67 ng/ml



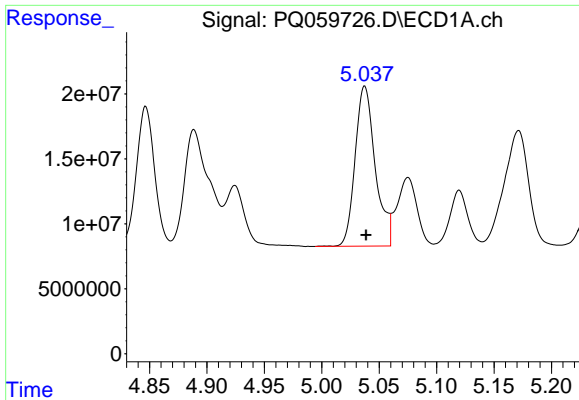
#6 AR-1016-4

R.T.: 4.752 min
 Delta R.T.: -0.001 min
 Response: 148595866
 Conc: 485.30 ng/ml



#6 AR-1016-4

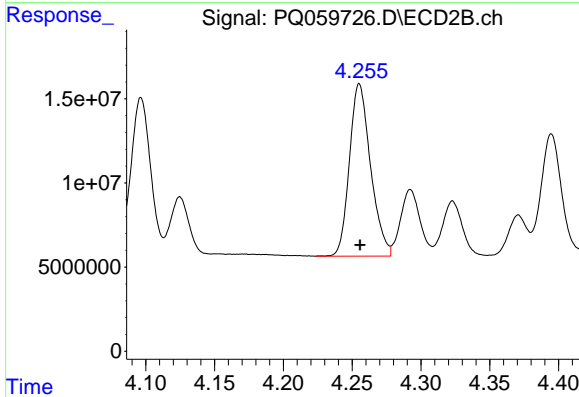
R.T.: 4.059 min
 Delta R.T.: 0.000 min
 Response: 83165381
 Conc: 486.34 ng/ml



#7 AR-1016-5

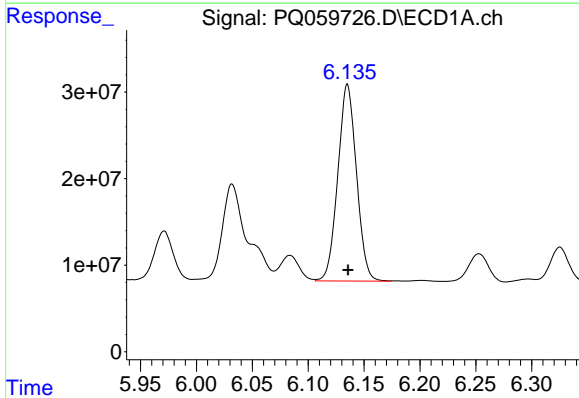
R.T.: 5.037 min
 Delta R.T.: -0.001 min
 Response: 150673489
 Conc: 486.87 ng/ml

Instrument :
 ECD_Q
 ClientSampleId :
 AR1660CCC500



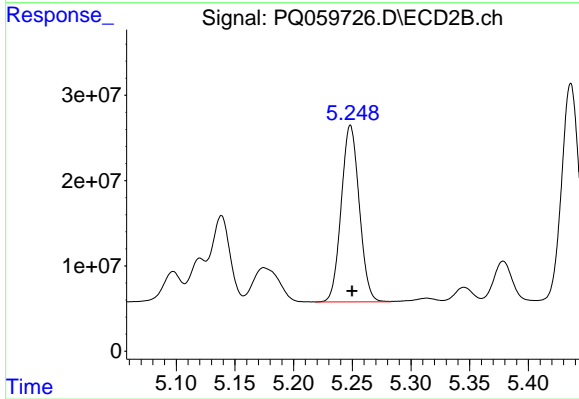
#7 AR-1016-5

R.T.: 4.255 min
 Delta R.T.: 0.000 min
 Response: 109387148
 Conc: 487.36 ng/ml



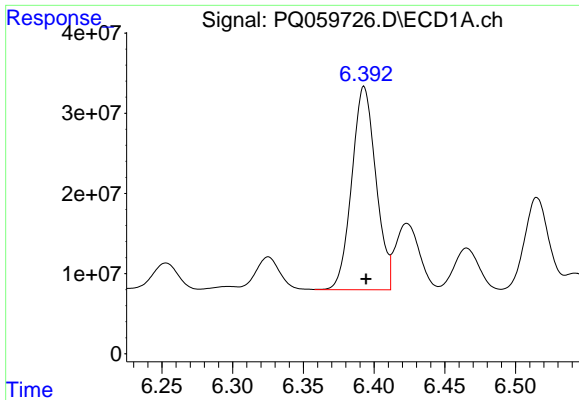
#31 AR-1260-1

R.T.: 6.135 min
 Delta R.T.: 0.000 min
 Response: 264334065
 Conc: 466.12 ng/ml



#31 AR-1260-1

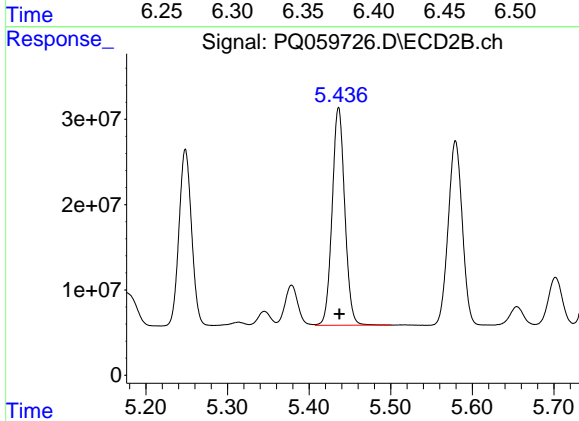
R.T.: 5.248 min
 Delta R.T.: -0.001 min
 Response: 221171306
 Conc: 487.33 ng/ml



#32 AR-1260-2

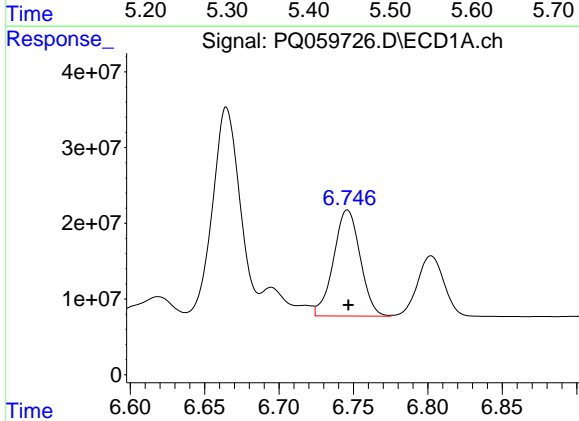
R.T.: 6.393 min
 Delta R.T.: -0.002 min
 Response: 300915052
 Conc: 474.85 ng/ml

Instrument :
 ECD_Q
 ClientSampleId :
 AR1660CCC500



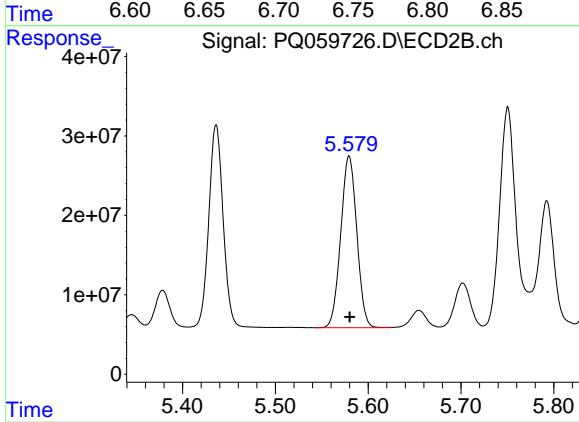
#32 AR-1260-2

R.T.: 5.436 min
 Delta R.T.: -0.001 min
 Response: 274909457
 Conc: 493.69 ng/ml



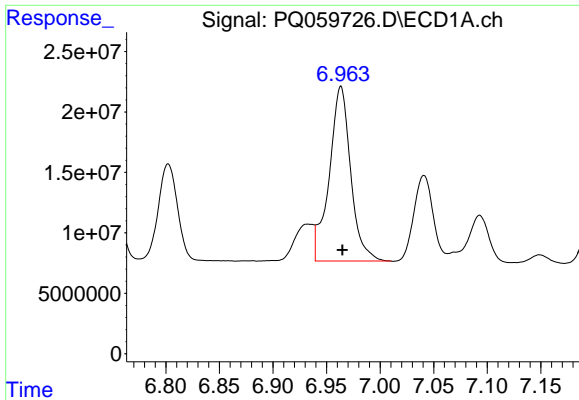
#33 AR-1260-3

R.T.: 6.746 min
 Delta R.T.: 0.000 min
 Response: 174518296
 Conc: 472.19 ng/ml



#33 AR-1260-3

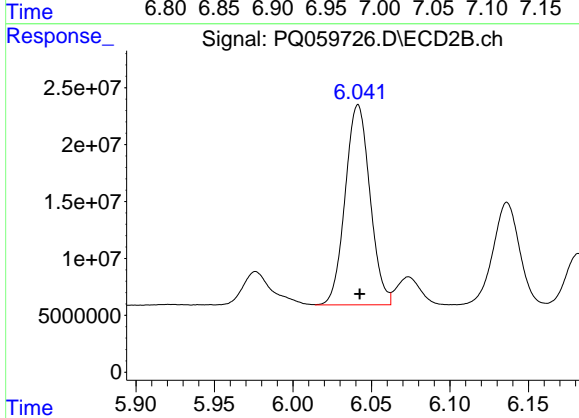
R.T.: 5.579 min
 Delta R.T.: 0.000 min
 Response: 260131256
 Conc: 489.67 ng/ml



#34 AR-1260-4

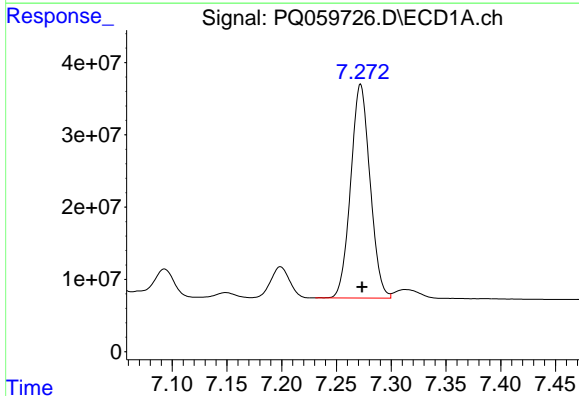
R.T.: 6.963 min
 Delta R.T.: -0.002 min
 Response: 201534251
 Conc: 484.87 ng/ml

Instrument :
 ECD_Q
 ClientSampleId :
 AR1660CCC500



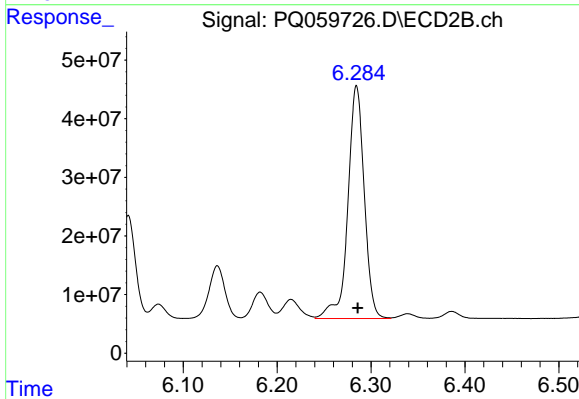
#34 AR-1260-4

R.T.: 6.041 min
 Delta R.T.: 0.000 min
 Response: 193583481
 Conc: 489.92 ng/ml



#35 AR-1260-5

R.T.: 7.272 min
 Delta R.T.: -0.001 min
 Response: 364035686
 Conc: 489.19 ng/ml



#35 AR-1260-5

R.T.: 6.285 min
 Delta R.T.: -0.001 min
 Response: 481608099
 Conc: 491.66 ng/ml