

Data Path : Z:\pestpcbsrv\HPCHEM1\ECD\_Q\Data\PQ102222\  
 Data File : PQ059732.D  
 Signal(s) : Signal #1: ECD1A.ch Signal #2: ECD2B.ch  
 Acq On : 21 Oct 2022 13:11  
 Operator : YP\AJ  
 Sample : N4955-01  
 Misc : AR1242 LOD 25 PPB  
 ALS Vial : 17 Sample Multiplier: 1

**Instrument :**  
 ECD\_Q  
**ClientSampleId :**  
 LOD-MDL-SOIL-01-QT4-2022

Integration File signal 1: autoint1.e  
 Integration File signal 2: autoint2.e  
 Quant Time: Oct 22 04:04:43 2022  
 Quant Method : Z:\pestpcbsrv\HPCHEM1\ECD\_Q\Method\PQ102122.M  
 Quant Title : GC EXTRACTABLES  
 QLast Update : Fri Oct 21 08:02:10 2022  
 Response via : Initial Calibration  
 Integrator: ChemStation

Volume Inj. : 2 µl  
 Signal #1 Phase : ZB-MR1 Signal #2 Phase: ZB-MR2  
 Signal #1 Info : 30Mx0.32mmx 0.50µ Signal #2 Info : 30M x 0.32mm x 0.25µm

Compound	RT#1	RT#2	Resp#1	Resp#2	ng/ml	ng/ml
-----						
System Monitoring Compounds						
1) SA Tetrachlo...	3.483	2.828	220.3E6	158.4E6	19.485	19.866
2) SA Decachlor...	8.652	7.602	114.1E6	170.7E6	20.876	20.313
Target Compounds						
16) L4 AR-1242-1	4.583	3.835	7185417	4585272	23.321	21.302
17) L4 AR-1242-2	4.602	3.851	10657460	7085854	23.801	22.372
18) L4 AR-1242-3	4.660	4.012	6127609	3473556	22.176	20.939
19) L4 AR-1242-4	4.753	4.096	4928911	2799105	21.521	18.450
20) L4 AR-1242-5	5.464	4.592	5686171	4808880	23.272	22.546
-----						

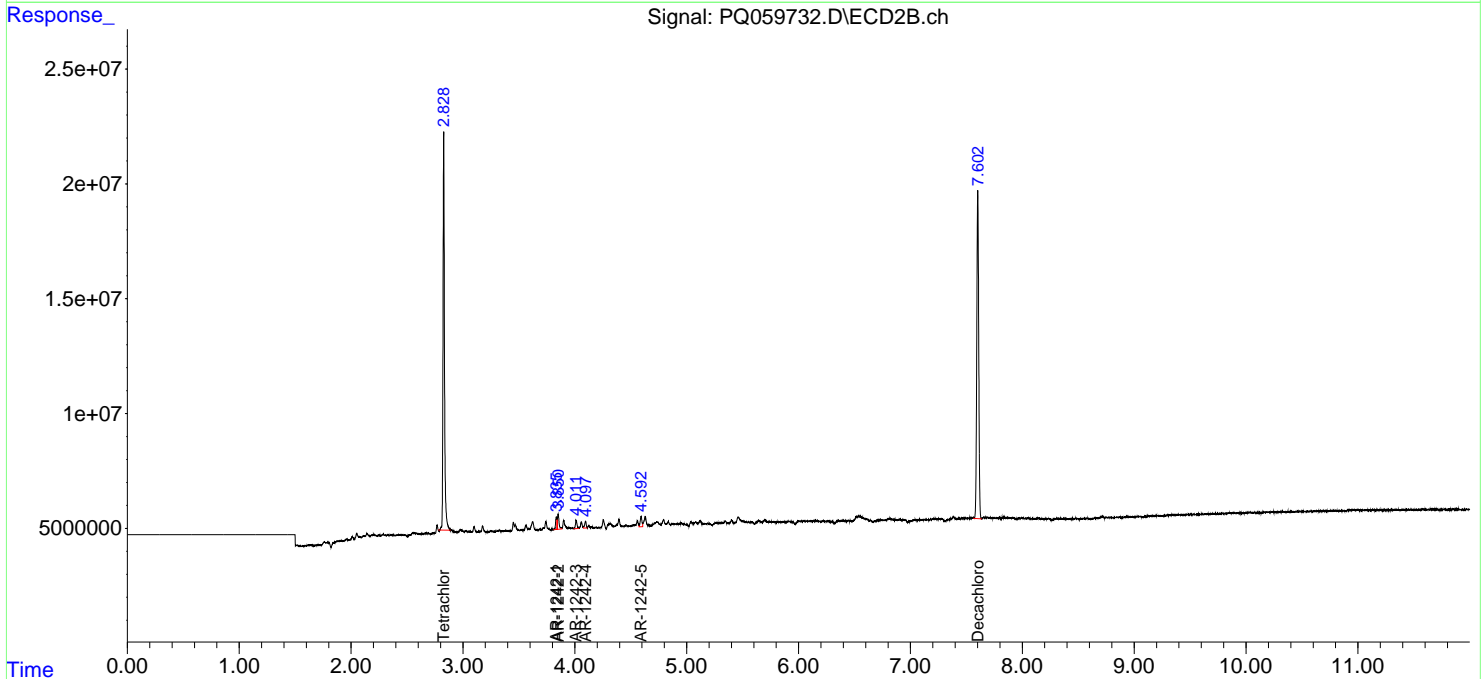
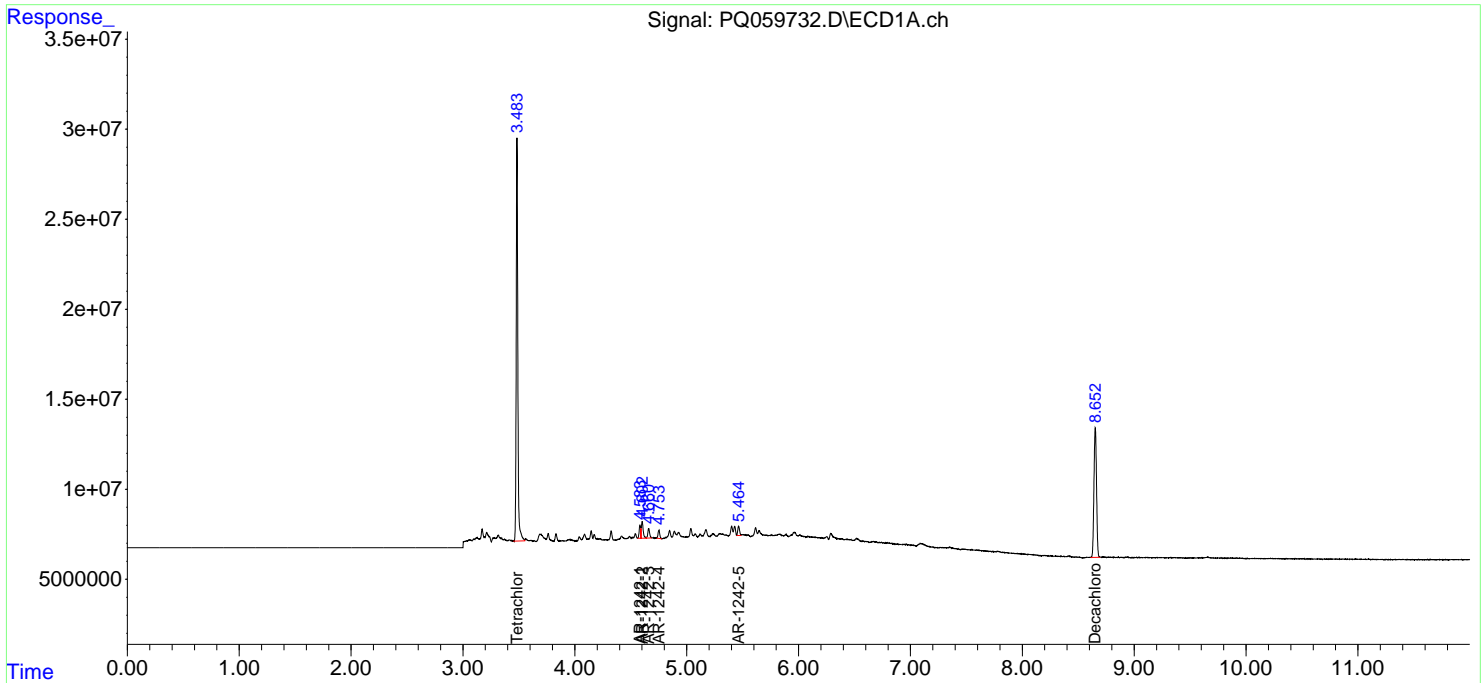
(f)=RT Delta > 1/2 Window (#)=Amounts differ by > 25% (m)=manual int.

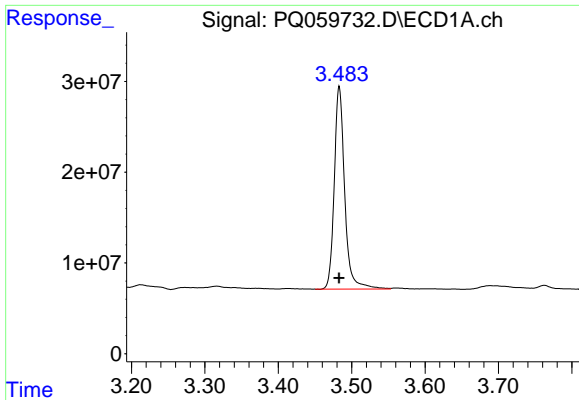
Data Path : Z:\pestpcbsrv\HPCHEM1\ECD\_Q\Data\PQ102222\  
 Data File : PQ059732.D  
 Signal(s) : Signal #1: ECD1A.ch Signal #2: ECD2B.ch  
 Acq On : 21 Oct 2022 13:11  
 Operator : YP\AJ  
 Sample : N4955-01  
 Misc : AR1242 LOD 25 PPB  
 ALS Vial : 17 Sample Multiplier: 1

**Instrument :**  
 ECD\_Q  
**ClientSampleId :**  
 LOD-MDL-SOIL-01-QT4-2022

Integration File signal 1: autoint1.e  
 Integration File signal 2: autoint2.e  
 Quant Time: Oct 22 04:04:43 2022  
 Quant Method : Z:\pestpcbsrv\HPCHEM1\ECD\_Q\Method\PQ102122.M  
 Quant Title : GC EXTRACTABLES  
 QLast Update : Fri Oct 21 08:02:10 2022  
 Response via : Initial Calibration  
 Integrator: ChemStation

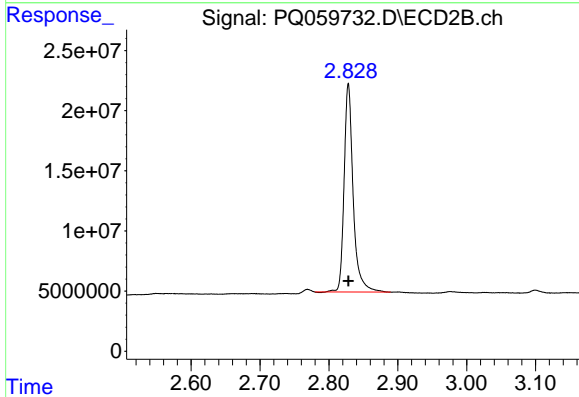
Volume Inj. : 2 µl  
 Signal #1 Phase : ZB-MR1 Signal #2 Phase: ZB-MR2  
 Signal #1 Info : 30Mx0.32mmx 0.50µ Signal #2 Info : 30M x 0.32mm x 0.25µm



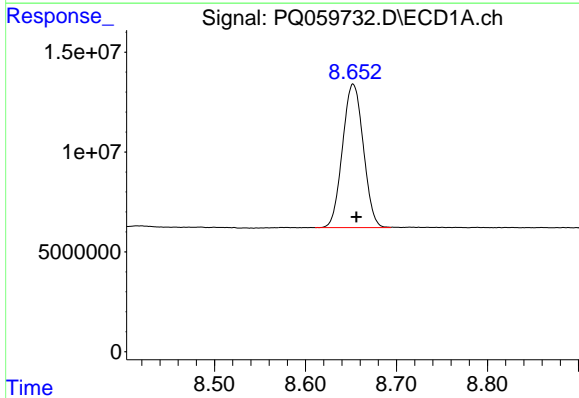


#1 Tetrachloro-m-xylene  
 R.T.: 3.483 min  
 Delta R.T.: 0.000 min  
 Response: 220342355  
 Conc: 19.48 ng/ml

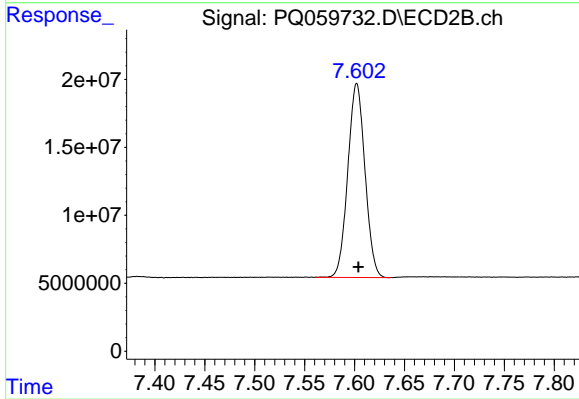
Instrument :  
 ECD\_Q  
 ClientSampleId :  
 LOD-MDL-SOIL-01-QT4-2022



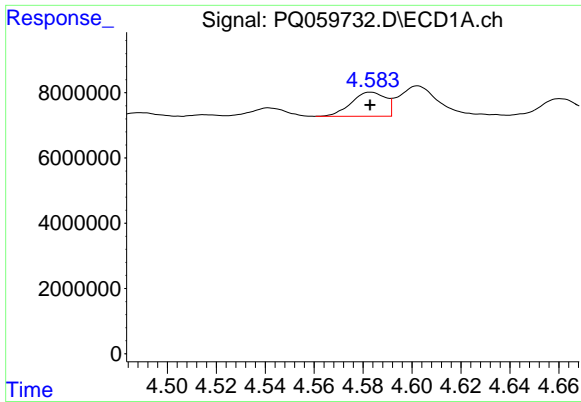
#1 Tetrachloro-m-xylene  
 R.T.: 2.828 min  
 Delta R.T.: 0.000 min  
 Response: 158366973  
 Conc: 19.87 ng/ml



#2 Decachlorobiphenyl  
 R.T.: 8.652 min  
 Delta R.T.: -0.004 min  
 Response: 114141554  
 Conc: 20.88 ng/ml



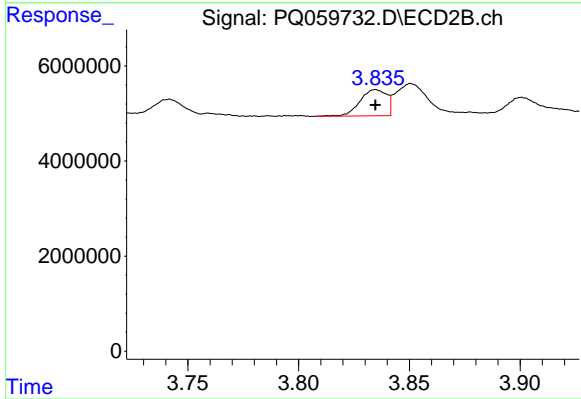
#2 Decachlorobiphenyl  
 R.T.: 7.602 min  
 Delta R.T.: -0.002 min  
 Response: 170667854  
 Conc: 20.31 ng/ml



#16 AR-1242-1

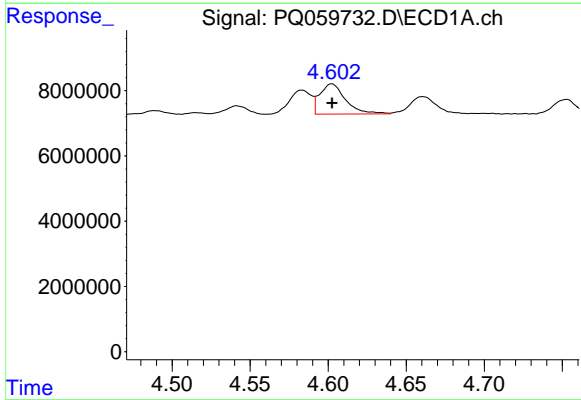
R.T.: 4.583 min  
 Delta R.T.: 0.000 min  
 Response: 7185417  
 Conc: 23.32 ng/ml

Instrument :  
 ECD\_Q  
 ClientSampleId :  
 LOD-MDL-SOIL-01-QT4-2022



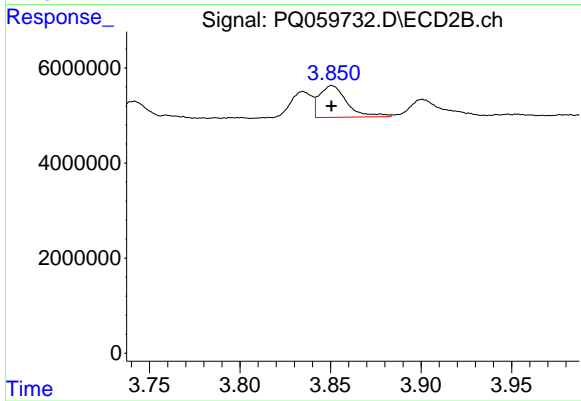
#16 AR-1242-1

R.T.: 3.835 min  
 Delta R.T.: 0.000 min  
 Response: 4585272  
 Conc: 21.30 ng/ml



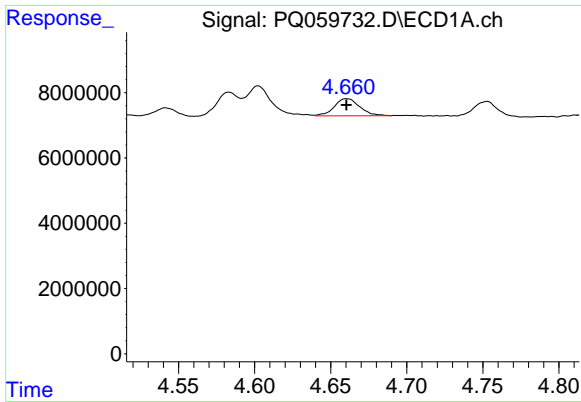
#17 AR-1242-2

R.T.: 4.602 min  
 Delta R.T.: 0.000 min  
 Response: 10657460  
 Conc: 23.80 ng/ml



#17 AR-1242-2

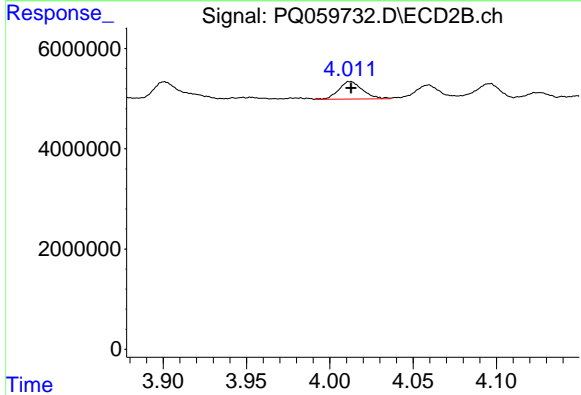
R.T.: 3.851 min  
 Delta R.T.: 0.000 min  
 Response: 7085854  
 Conc: 22.37 ng/ml



#18 AR-1242-3

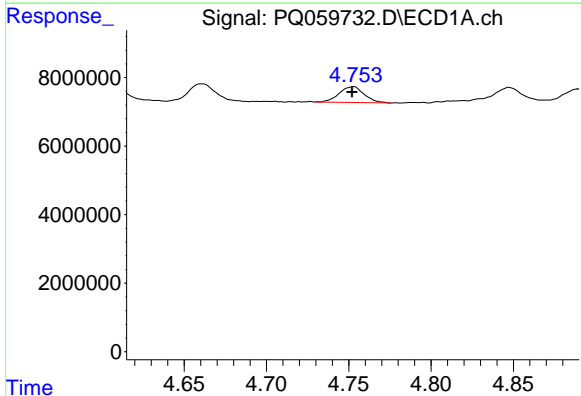
R.T.: 4.660 min  
 Delta R.T.: 0.000 min  
 Response: 6127609  
 Conc: 22.18 ng/ml

Instrument :  
 ECD\_Q  
 ClientSampleId :  
 LOD-MDL-SOIL-01-QT4-2022



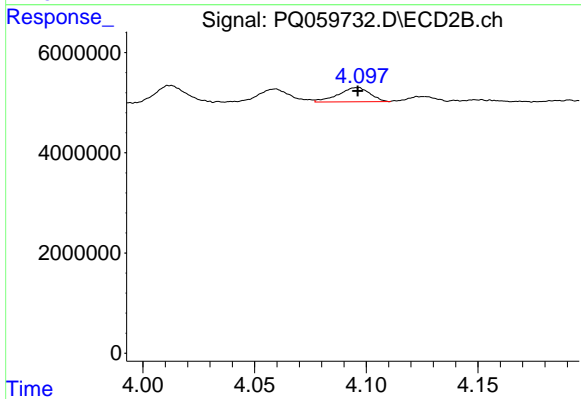
#18 AR-1242-3

R.T.: 4.012 min  
 Delta R.T.: 0.000 min  
 Response: 3473556  
 Conc: 20.94 ng/ml



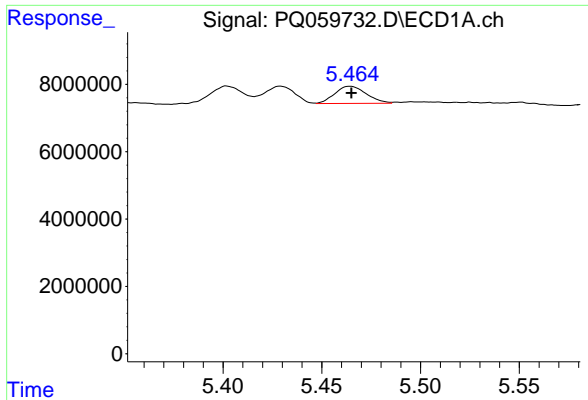
#19 AR-1242-4

R.T.: 4.753 min  
 Delta R.T.: 0.001 min  
 Response: 4928911  
 Conc: 21.52 ng/ml



#19 AR-1242-4

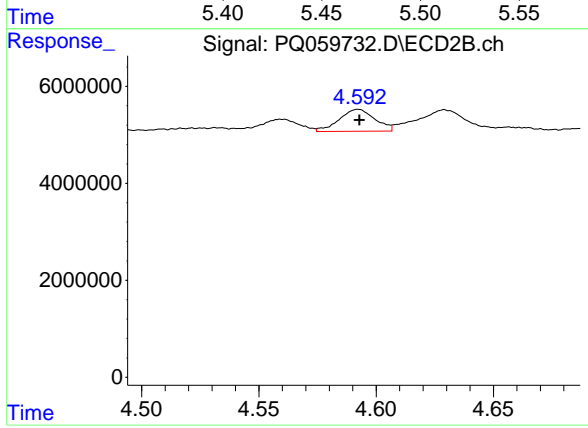
R.T.: 4.096 min  
 Delta R.T.: 0.000 min  
 Response: 2799105  
 Conc: 18.45 ng/ml



#20 AR-1242-5

R.T.: 5.464 min  
 Delta R.T.: 0.000 min  
 Response: 5686171  
 Conc: 23.27 ng/ml

Instrument :  
 ECD\_Q  
 ClientSampleId :  
 LOD-MDL-SOIL-01-QT4-2022



#20 AR-1242-5

R.T.: 4.592 min  
 Delta R.T.: 0.000 min  
 Response: 4808880  
 Conc: 22.55 ng/ml