

Data Path : Z:\pestpcbsrv\HPCHEM1\ECD_Q\Data\PQ102222\
 Data File : PQ059754.D
 Signal(s) : Signal #1: ECD1A.ch Signal #2: ECD2B.ch
 Acq On : 21 Oct 2022 18:35
 Operator : YP\AJ
 Sample : N4955-07
 Misc : AR1254 LOD 40 PPB
 ALS Vial : 35 Sample Multiplier: 1

Instrument :
 ECD_Q
ClientSampleId :
 LOD-MDL-WATER-01-QT4-2022

Integration File signal 1: autoint1.e
 Integration File signal 2: autoint2.e
 Quant Time: Oct 22 13:06:46 2022
 Quant Method : Z:\pestpcbsrv\HPCHEM1\ECD_Q\Method\PQ102122.M
 Quant Title : GC EXTRACTABLES
 QLast Update : Fri Oct 21 08:02:10 2022
 Response via : Initial Calibration
 Integrator: ChemStation

Volume Inj. : 2 µl
 Signal #1 Phase : ZB-MR1 Signal #2 Phase: ZB-MR2
 Signal #1 Info : 30Mx0.32mmx 0.50µ Signal #2 Info : 30M x 0.32mm x 0.25µm

Compound	RT#1	RT#2	Resp#1	Resp#2	ng/ml	ng/ml

System Monitoring Compounds						
1) SA Tetrachlo...	3.483	2.828	222.6E6	161.3E6	19.687	20.236
2) SA Decachlor...	8.654	7.602	115.0E6	174.1E6	21.025	20.717
Target Compounds						
26) L6 AR-1254-1	5.403	4.591	16314068	13237571	36.483	29.845
27) L6 AR-1254-2	5.618	4.737	25670541	12316509	37.297	31.529
28) L6 AR-1254-3	5.972	5.120	26615003	18358868	37.086	30.510
29) L6 AR-1254-4	6.254	5.346	18550699	13040684	36.603	32.054
30) L6 AR-1254-5	6.666	5.750	18048471	19001277	34.056	30.758

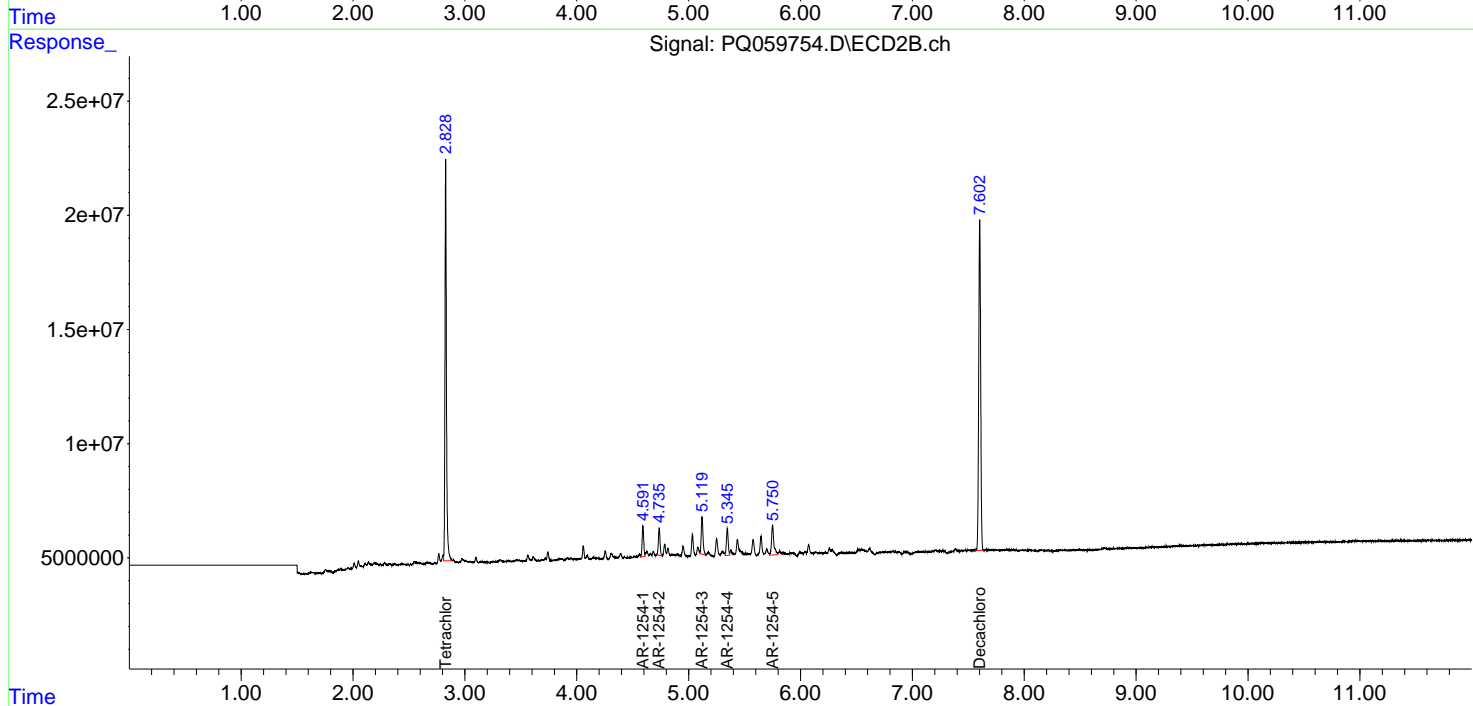
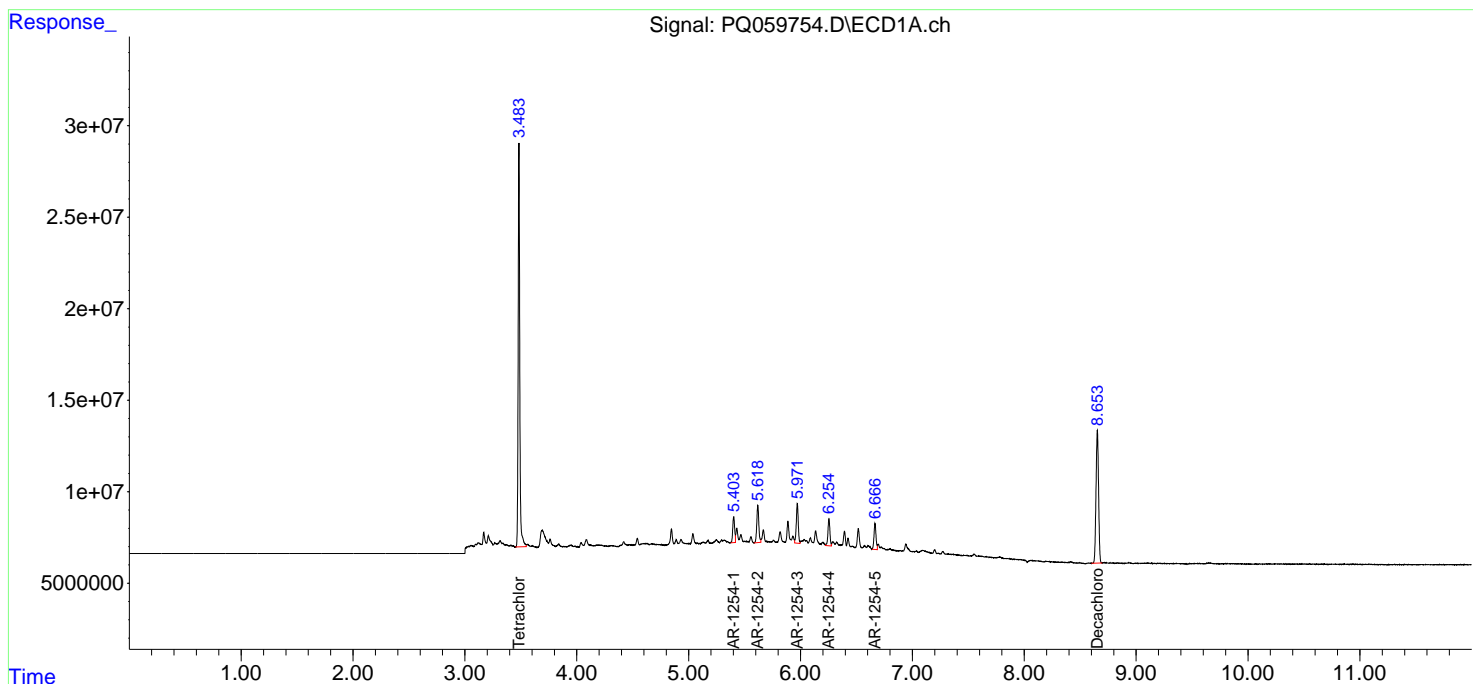
(f)=RT Delta > 1/2 Window (#)=Amounts differ by > 25% (m)=manual int.

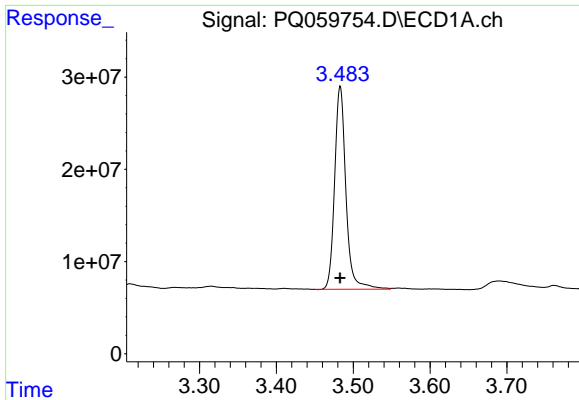
Data Path : Z:\pestpcbsrv\HPCHEM1\ECD_Q\Data\PQ102222\
 Data File : PQ059754.D
 Signal(s) : Signal #1: ECD1A.ch Signal #2: ECD2B.ch
 Acq On : 21 Oct 2022 18:35
 Operator : YP\AJ
 Sample : N4955-07
 Misc : AR1254 LOD 40 PPB
 ALS Vial : 35 Sample Multiplier: 1

Instrument :
 ECD_Q
 ClientSampleId :
 LOD-MDL-WATER-01-QT4-2022

Integration File signal 1: autoint1.e
 Integration File signal 2: autoint2.e
 Quant Time: Oct 22 13:06:46 2022
 Quant Method : Z:\pestpcbsrv\HPCHEM1\ECD_Q\Method\PQ102122.M
 Quant Title : GC EXTRACTABLES
 QLast Update : Fri Oct 21 08:02:10 2022
 Response via : Initial Calibration
 Integrator: ChemStation

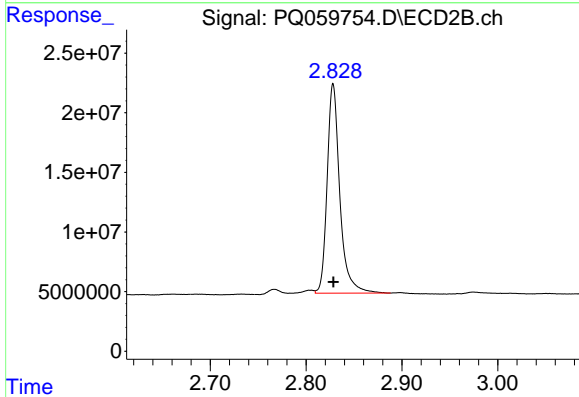
Volume Inj. : 2 µl
 Signal #1 Phase : ZB-MR1 Signal #2 Phase: ZB-MR2
 Signal #1 Info : 30Mx0.32mmx 0.50µ Signal #2 Info : 30M x 0.32mm x 0.25µm



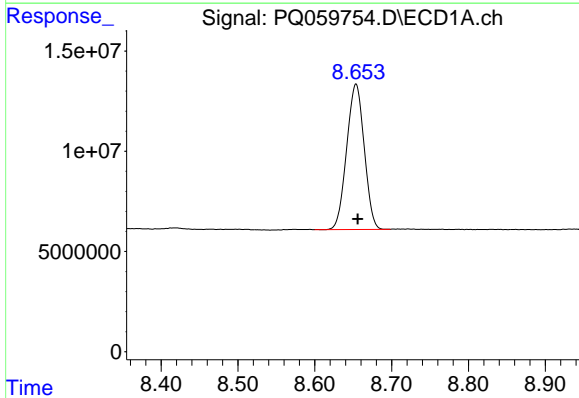


#1 Tetrachloro-m-xylene
 R.T.: 3.483 min
 Delta R.T.: 0.000 min
 Response: 222631557
 Conc: 19.69 ng/ml

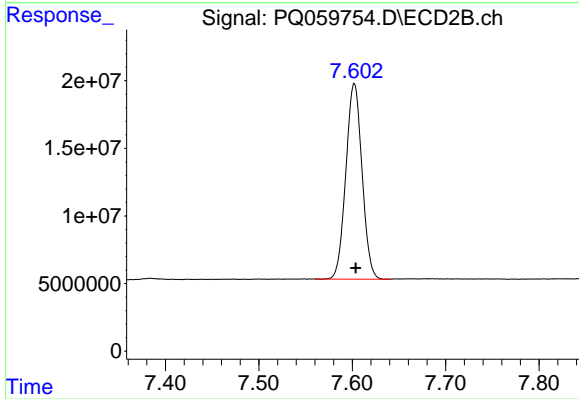
Instrument :
 ECD_Q
 ClientSampleId :
 LOD-MDL-WATER-01-QT4-2022



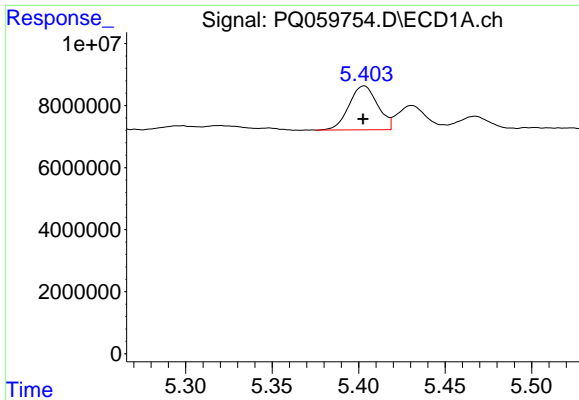
#1 Tetrachloro-m-xylene
 R.T.: 2.828 min
 Delta R.T.: 0.000 min
 Response: 161314628
 Conc: 20.24 ng/ml



#2 Decachlorobiphenyl
 R.T.: 8.654 min
 Delta R.T.: -0.002 min
 Response: 114955002
 Conc: 21.02 ng/ml



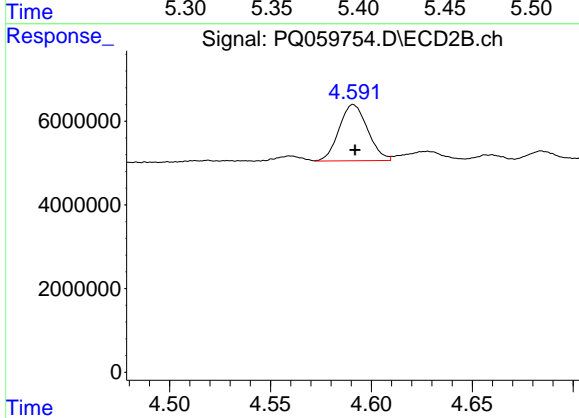
#2 Decachlorobiphenyl
 R.T.: 7.602 min
 Delta R.T.: -0.002 min
 Response: 174055803
 Conc: 20.72 ng/ml



#26 AR-1254-1

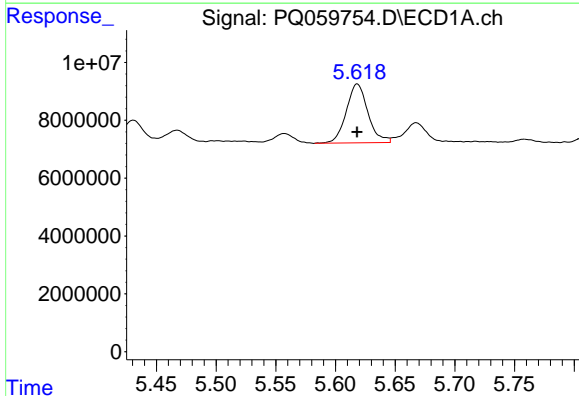
R.T.: 5.403 min
 Delta R.T.: 0.000 min
 Response: 16314068
 Conc: 36.48 ng/ml

Instrument :
 ECD_Q
ClientSampleId :
 LOD-MDL-WATER-01-QT4-2022



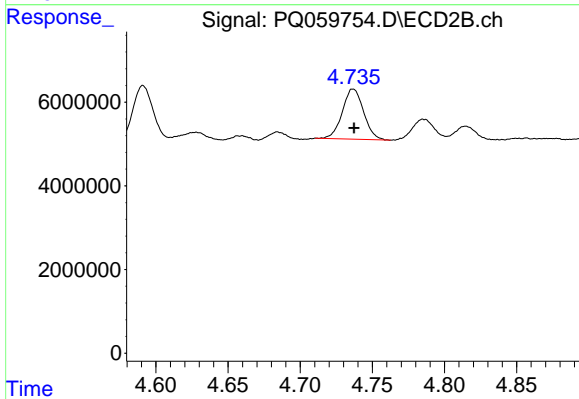
#26 AR-1254-1

R.T.: 4.591 min
 Delta R.T.: 0.000 min
 Response: 13237571
 Conc: 29.84 ng/ml



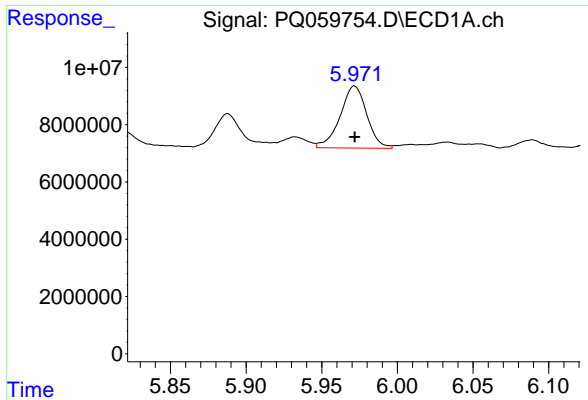
#27 AR-1254-2

R.T.: 5.618 min
 Delta R.T.: 0.000 min
 Response: 25670541
 Conc: 37.30 ng/ml



#27 AR-1254-2

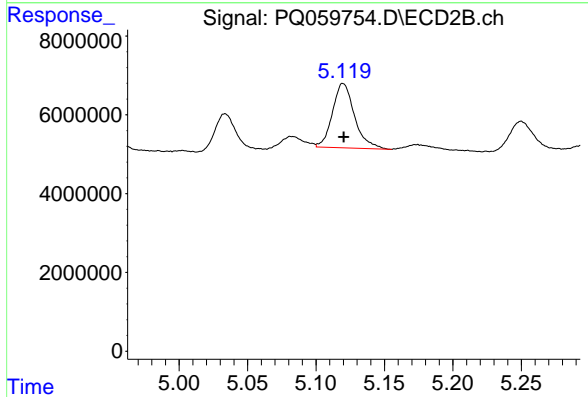
R.T.: 4.737 min
 Delta R.T.: 0.000 min
 Response: 12316509
 Conc: 31.53 ng/ml



#28 AR-1254-3

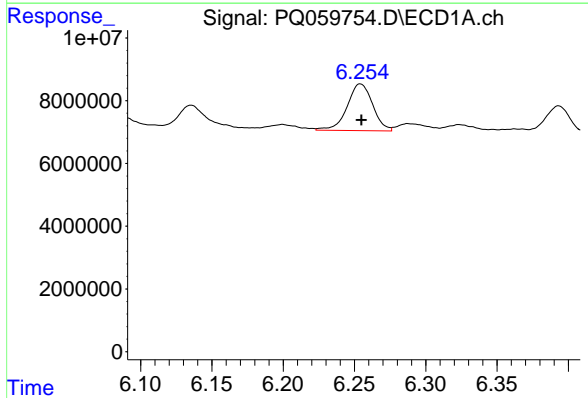
R.T.: 5.972 min
 Delta R.T.: 0.000 min
 Response: 26615003
 Conc: 37.09 ng/ml

Instrument :
 ECD_Q
 ClientSampleId :
 LOD-MDL-WATER-01-QT4-2022



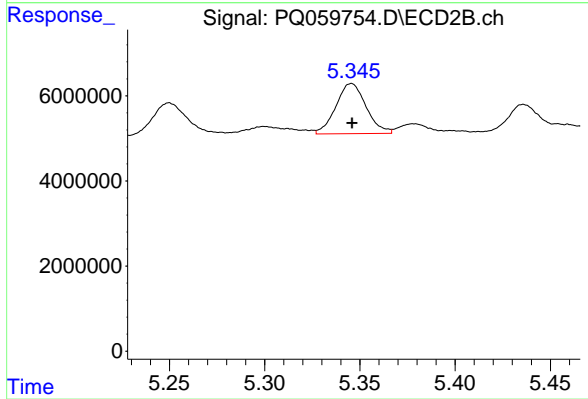
#28 AR-1254-3

R.T.: 5.120 min
 Delta R.T.: 0.000 min
 Response: 18358868
 Conc: 30.51 ng/ml



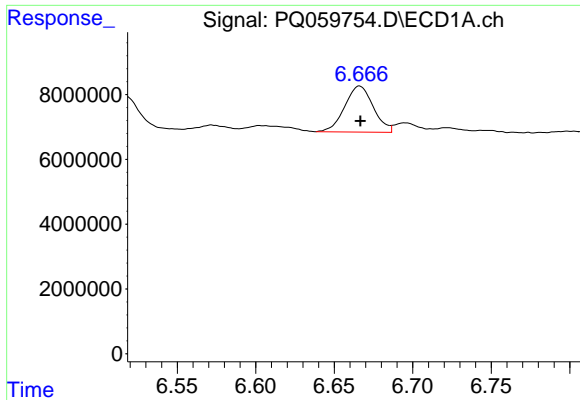
#29 AR-1254-4

R.T.: 6.254 min
 Delta R.T.: 0.000 min
 Response: 18550699
 Conc: 36.60 ng/ml



#29 AR-1254-4

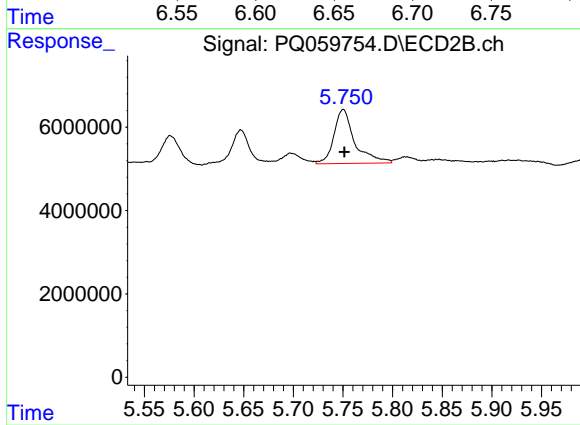
R.T.: 5.346 min
 Delta R.T.: 0.000 min
 Response: 13040684
 Conc: 32.05 ng/ml



#30 AR-1254-5

R.T.: 6.666 min
Delta R.T.: 0.000 min
Response: 18048471
Conc: 34.06 ng/ml

Instrument :
ECD_Q
ClientSampleId :
LOD-MDL-WATER-01-QT4-2022



#30 AR-1254-5

R.T.: 5.750 min
Delta R.T.: -0.001 min
Response: 19001277
Conc: 30.76 ng/ml