

Data Path : Z:\pestpcbsrv\HPCHEM1\ECD\_Q\Data\PQ102318\  
 Data File : PQ033481.D  
 Signal(s) : Signal #1: ECD1A.ch Signal #2: ECD2B.ch  
 Acq On : 23 Oct 2018 17:43  
 Operator : SM\SJ  
 Sample : I.BLK  
 Misc :  
 ALS Vial : 2 Sample Multiplier: 1

Instrument :  
 ECD\_Q  
 ClientSampleId :

Integration File signal 1: autoint1.e  
 Integration File signal 2: autoint2.e  
 Quant Time: Oct 24 01:27:05 2018  
 Quant Method : Z:\pestpcbsrv\HPCHEM1\ECD\_Q\Method\PQ101918.M  
 Quant Title : GC EXTRACTABLES  
 QLast Update : Sat Oct 20 01:08:39 2018  
 Response via : Initial Calibration  
 Integrator: ChemStation

Volume Inj. : 2 µl  
 Signal #1 Phase : ZB-MR1 Signal #2 Phase: ZB-MR2  
 Signal #1 Info : 30Mx0.32mmx 0.50µ Signal #2 Info : 30M x 0.32mm x 0.25µm

Compound	RT#1	RT#2	Resp#1	Resp#2	ng/ml	ng/ml
-----						
System Monitoring Compounds						
1) SA Tetrachlo...	4.563	3.844	55945918	39493147	21.674	22.317
2) SA Decachlor...	10.389	8.891	39781038	32363401	19.390	19.556
Target Compounds						
24) L5 AR-1248-4	6.598	0.000	1504867	0	18.791	N.D. #
26) L6 AR-1254-1	6.598	0.000	1504867	0	12.742	N.D. #
-----						

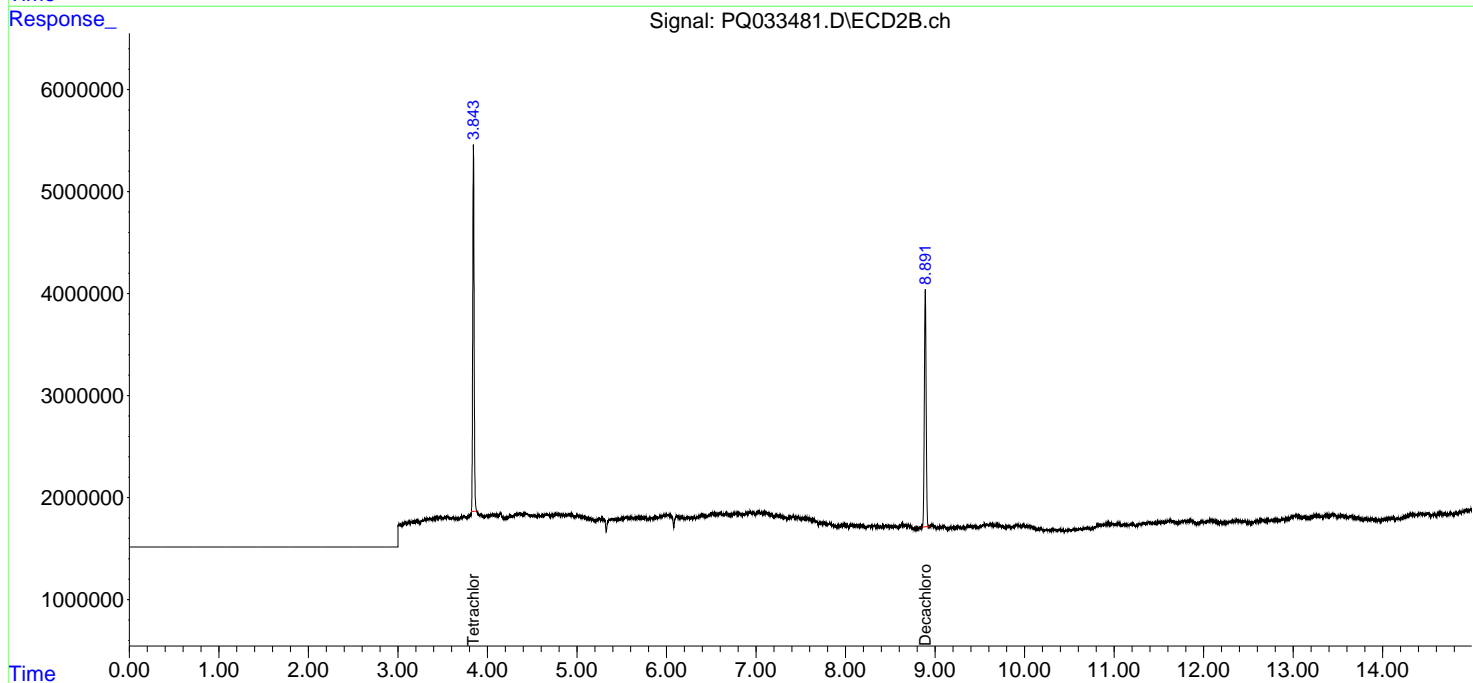
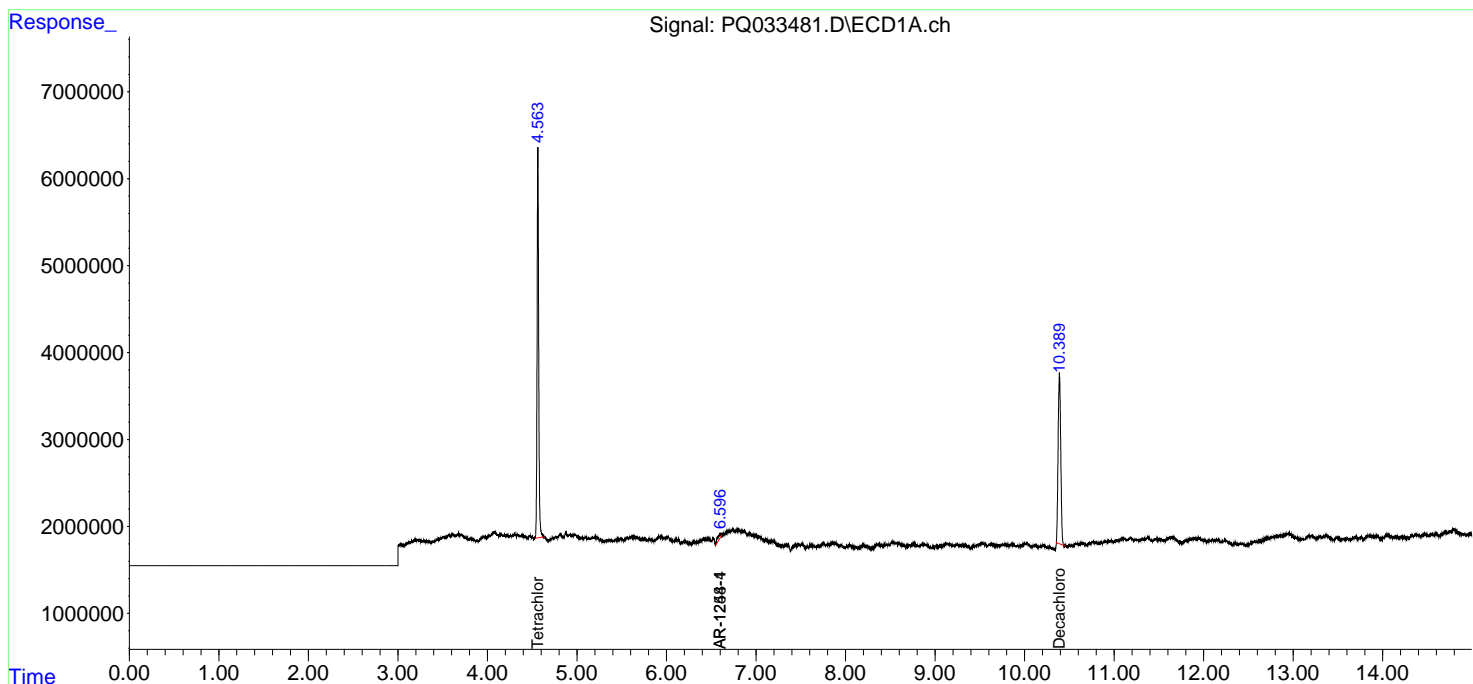
(f)=RT Delta > 1/2 Window (#)=Amounts differ by > 25% (m)=manual int.

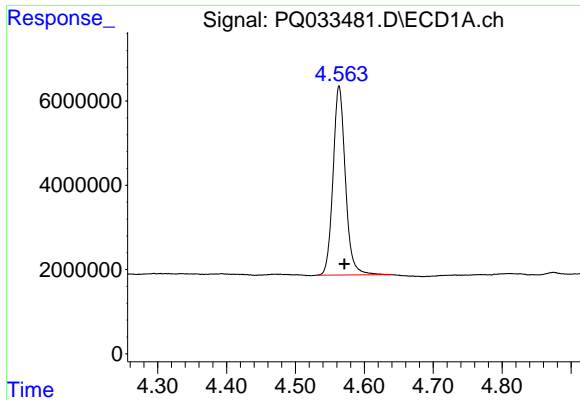
Data Path : Z:\pestpcbsrv\HPCHEM1\ECD\_Q\Data\PQ102318\  
 Data File : PQ033481.D  
 Signal(s) : Signal #1: ECD1A.ch Signal #2: ECD2B.ch  
 Acq On : 23 Oct 2018 17:43  
 Operator : SM\SJ  
 Sample : I.BLK  
 Misc :  
 ALS Vial : 2 Sample Multiplier: 1

Instrument :  
 ECD\_Q  
 ClientSampleId :

Integration File signal 1: autoint1.e  
 Integration File signal 2: autoint2.e  
 Quant Time: Oct 24 01:27:05 2018  
 Quant Method : Z:\pestpcbsrv\HPCHEM1\ECD\_Q\Method\PQ101918.M  
 Quant Title : GC EXTRACTABLES  
 QLast Update : Sat Oct 20 01:08:39 2018  
 Response via : Initial Calibration  
 Integrator: ChemStation

Volume Inj. : 2 µl  
 Signal #1 Phase : ZB-MR1 Signal #2 Phase: ZB-MR2  
 Signal #1 Info : 30Mx0.32mmx 0.50µ Signal #2 Info : 30M x 0.32mm x 0.25µm

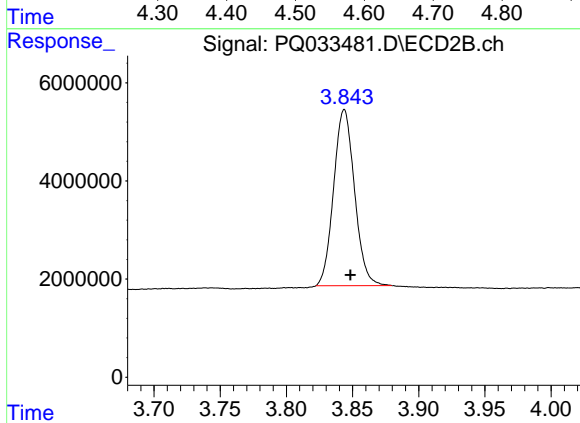




#1 Tetrachloro-m-xylene

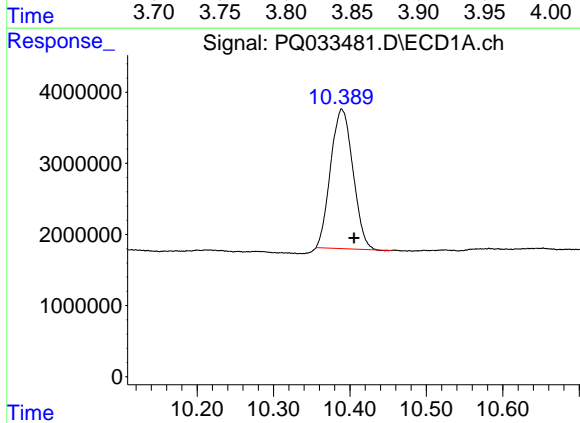
R.T.: 4.563 min  
 Delta R.T.: -0.008 min  
 Response: 55945918  
 Conc: 21.67 ng/ml

Instrument :  
 ECD\_Q  
 ClientSampled :



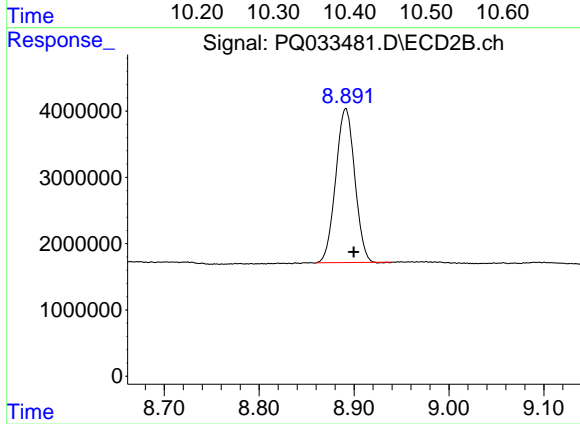
#1 Tetrachloro-m-xylene

R.T.: 3.844 min  
 Delta R.T.: -0.005 min  
 Response: 39493147  
 Conc: 22.32 ng/ml



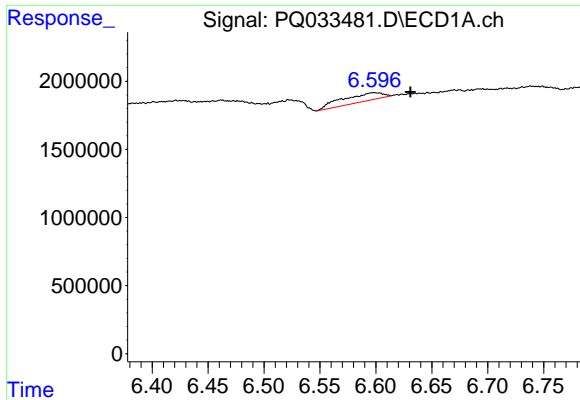
#2 Decachlorobiphenyl

R.T.: 10.389 min  
 Delta R.T.: -0.016 min  
 Response: 39781038  
 Conc: 19.39 ng/ml



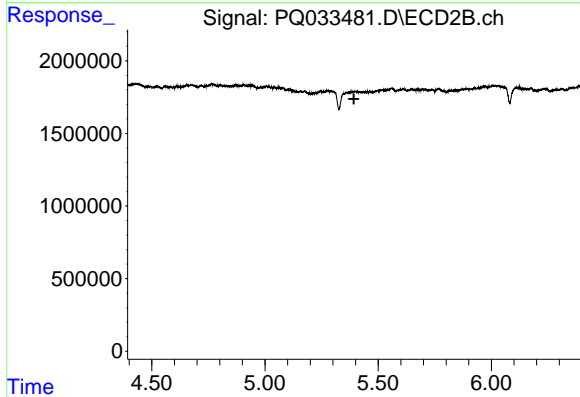
#2 Decachlorobiphenyl

R.T.: 8.891 min  
 Delta R.T.: -0.008 min  
 Response: 32363401  
 Conc: 19.56 ng/ml

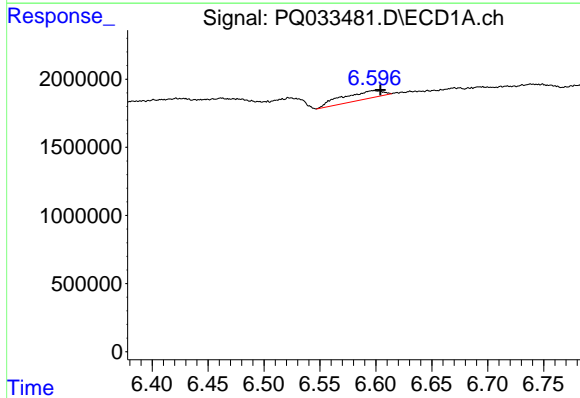


#24 AR-1248-4  
 R.T.: 6.598 min  
 Delta R.T.: -0.033 min  
 Response: 1504867  
 Conc: 18.79 ng/ml

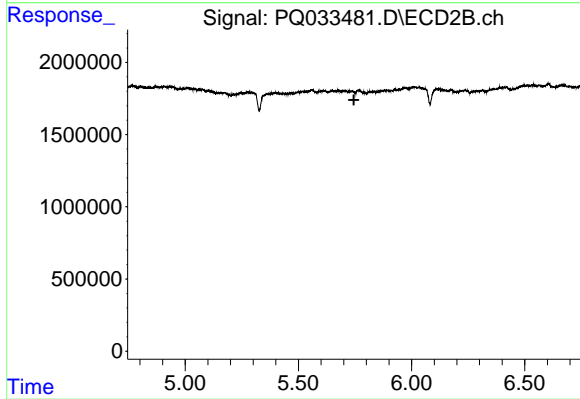
Instrument :  
 ECD\_Q  
 ClientSampleId :



#24 AR-1248-4  
 R.T.: 0.000 min  
 Exp R.T. : 5.393 min  
 Response: 0  
 Conc: N.D.



#26 AR-1254-1  
 R.T.: 6.598 min  
 Delta R.T.: -0.006 min  
 Response: 1504867  
 Conc: 12.74 ng/ml



#26 AR-1254-1  
 R.T.: 0.000 min  
 Exp R.T. : 5.745 min  
 Response: 0  
 Conc: N.D.