

Data Path : Z:\pestpcbsrv\HPCHEM1\ECD\_Q\Data\PQ102418\  
 Data File : PQ033552.D  
 Signal(s) : Signal #1: ECD1A.ch Signal #2: ECD2B.ch  
 Acq On : 24 Oct 2018 15:31  
 Operator : SM\SJ  
 Sample : J5612-13  
 Misc :  
 ALS Vial : 13 Sample Multiplier: 1

Instrument :  
 ECD\_Q  
 ClientSampleId :  
 181Q-37A

Integration File signal 1: autoint1.e  
 Integration File signal 2: autoint2.e  
 Quant Time: Oct 25 02:05:30 2018  
 Quant Method : Z:\pestpcbsrv\HPCHEM1\ECD\_Q\Method\PQ101918.M  
 Quant Title : GC EXTRACTABLES  
 QLast Update : Sat Oct 20 01:08:39 2018  
 Response via : Initial Calibration  
 Integrator: ChemStation

Volume Inj. : 2 µl  
 Signal #1 Phase : ZB-MR1 Signal #2 Phase: ZB-MR2  
 Signal #1 Info : 30Mx0.32mmx 0.50µ Signal #2 Info : 30M x 0.32mm x 0.25µm

Compound	RT#1	RT#2	Resp#1	Resp#2	ng/ml	ng/ml
----------	------	------	--------	--------	-------	-------

-----  
 System Monitoring Compounds

1) SA Tetrachlo...	4.563	3.844	42741265	29565081	16.558	16.707
2) SA Decachlor...	10.389	8.889	31283142	23113483	15.248m	13.967

Target Compounds  
 -----

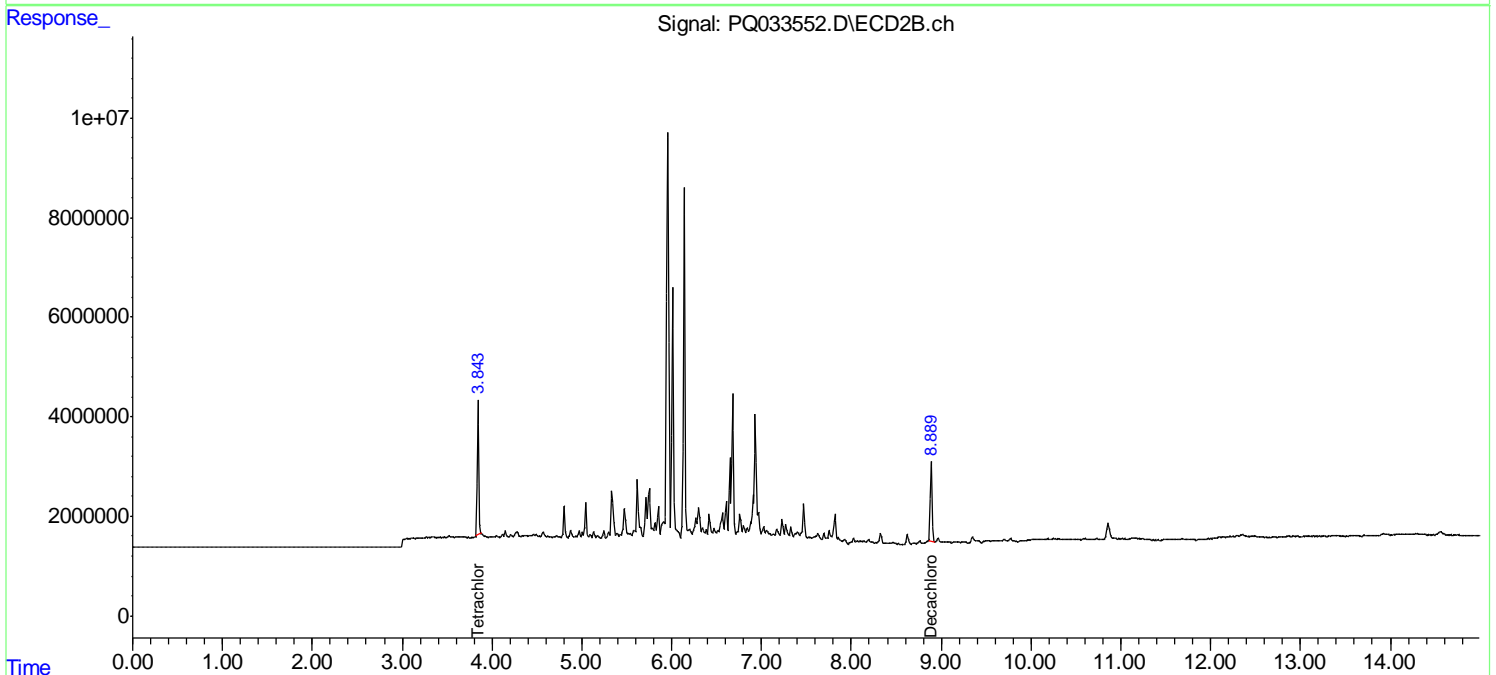
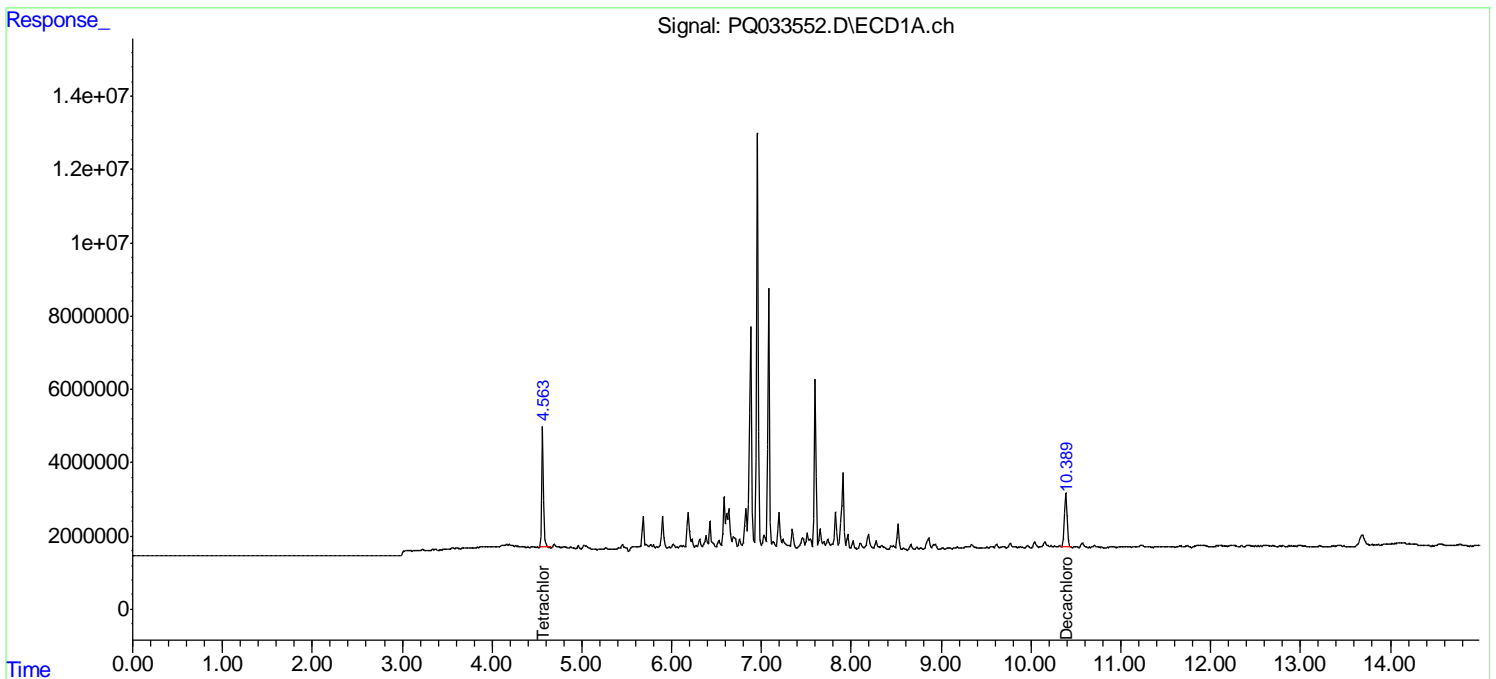
(f)=RT Delta > 1/2 Window (#)=Amounts differ by > 25% (m)=manual int.

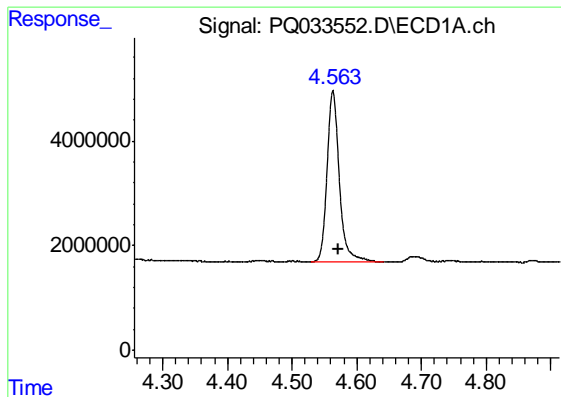
Data Path : Z:\pestpcbsrv\HPCHEM1\ECD\_Q\Data\PQ102418\  
 Data File : PQ033552.D  
 Signal(s) : Signal #1: ECD1A.ch Signal #2: ECD2B.ch  
 Acq On : 24 Oct 2018 15:31  
 Operator : SM\SJ  
 Sample : J5612-13  
 Misc :  
 ALS Vial : 13 Sample Multiplier: 1

Instrument :  
 ECD\_Q  
 ClientSampled :  
 181Q-37A

Integration File signal 1: autoint1.e  
 Integration File signal 2: autoint2.e  
 Quant Time: Oct 25 02:05:30 2018  
 Quant Method : Z:\pestpcbsrv\HPCHEM1\ECD\_Q\Method\PQ101918.M  
 Quant Title : GC EXTRACTABLES  
 QLast Update : Sat Oct 20 01:08:39 2018  
 Response via : Initial Calibration  
 Integrator: ChemStation

Volume Inj. : 2 µl  
 Signal #1 Phase : ZB-MR1 Signal #2 Phase: ZB-MR2  
 Signal #1 Info : 30Mx0.32mmx 0.50µ Signal #2 Info : 30M x 0.32mm x 0.25µm

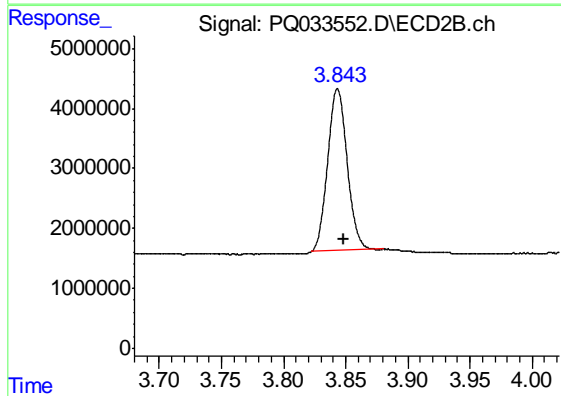




#1 Tetrachloro-m-xylene

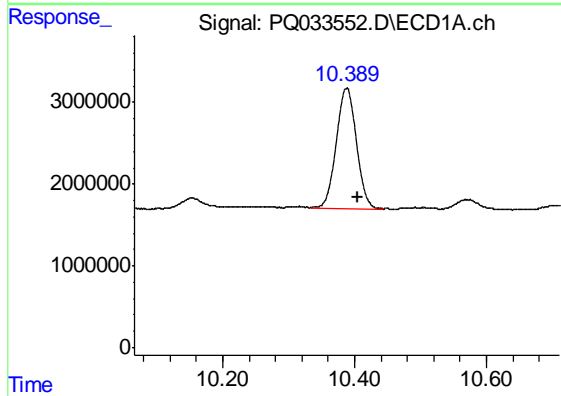
R.T.: 4.563 min  
 Delta R.T.: -0.008 min  
 Response: 42741265  
 Conc: 16.56 ng/ml

Instrument :  
 ECD\_Q  
 ClientSampleId :  
 181Q-37A



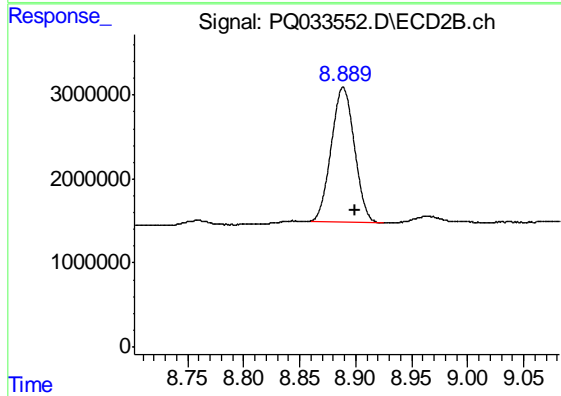
#1 Tetrachloro-m-xylene

R.T.: 3.844 min  
 Delta R.T.: -0.005 min  
 Response: 29565081  
 Conc: 16.71 ng/ml



#2 Decachlorobiphenyl

R.T.: 10.389 min  
 Delta R.T.: -0.017 min  
 Response: 31283142  
 Conc: 15.25 ng/ml m



#2 Decachlorobiphenyl

R.T.: 8.889 min  
 Delta R.T.: -0.011 min  
 Response: 23113483  
 Conc: 13.97 ng/ml