

Data Path : Z:\pestpcbsrv\HPCHEM1\ECD_Q\Data\PQ102418\
 Data File : PQ033562.D
 Signal(s) : Signal #1: ECD1A.ch Signal #2: ECD2B.ch
 Acq On : 24 Oct 2018 18:27
 Operator : SM\SJ
 Sample : J5640-04
 Misc :
 ALS Vial : 20 Sample Multiplier: 1

Instrument :
 ECD_Q
 ClientSampleId :
 102218-JETT-F-U-B

Manual Integrations
 APPROVED

Sohil
 10/26/2018 10:37:50 AM

Integration File signal 1: autoint1.e
 Integration File signal 2: autoint2.e
 Quant Time: Oct 25 01:04:45 2018
 Quant Method : Z:\pestpcbsrv\HPCHEM1\ECD_Q\Method\PQ101918.M
 Quant Title : GC EXTRACTABLES
 QLast Update : Sat Oct 20 01:08:39 2018
 Response via : Initial Calibration
 Integrator: ChemStation

Volume Inj. : 2 µl
 Signal #1 Phase : ZB-MR1 Signal #2 Phase: ZB-MR2
 Signal #1 Info : 30Mx0.32mmx 0.50µ Signal #2 Info : 30M x 0.32mm x 0.25µm

Compound	RT#1	RT#2	Resp#1	Resp#2	ng/ml	ng/ml
----------	------	------	--------	--------	-------	-------

 System Monitoring Compounds

1) SA Tetrachlo...	4.562	3.841	41556063	28965796	16.099	16.368m
2) SA Decachlor...	10.384	8.888	44882109	33193338	21.876m	20.057m

Target Compounds

(f)=RT Delta > 1/2 Window (#)=Amounts differ by > 25% (m)=manual int.

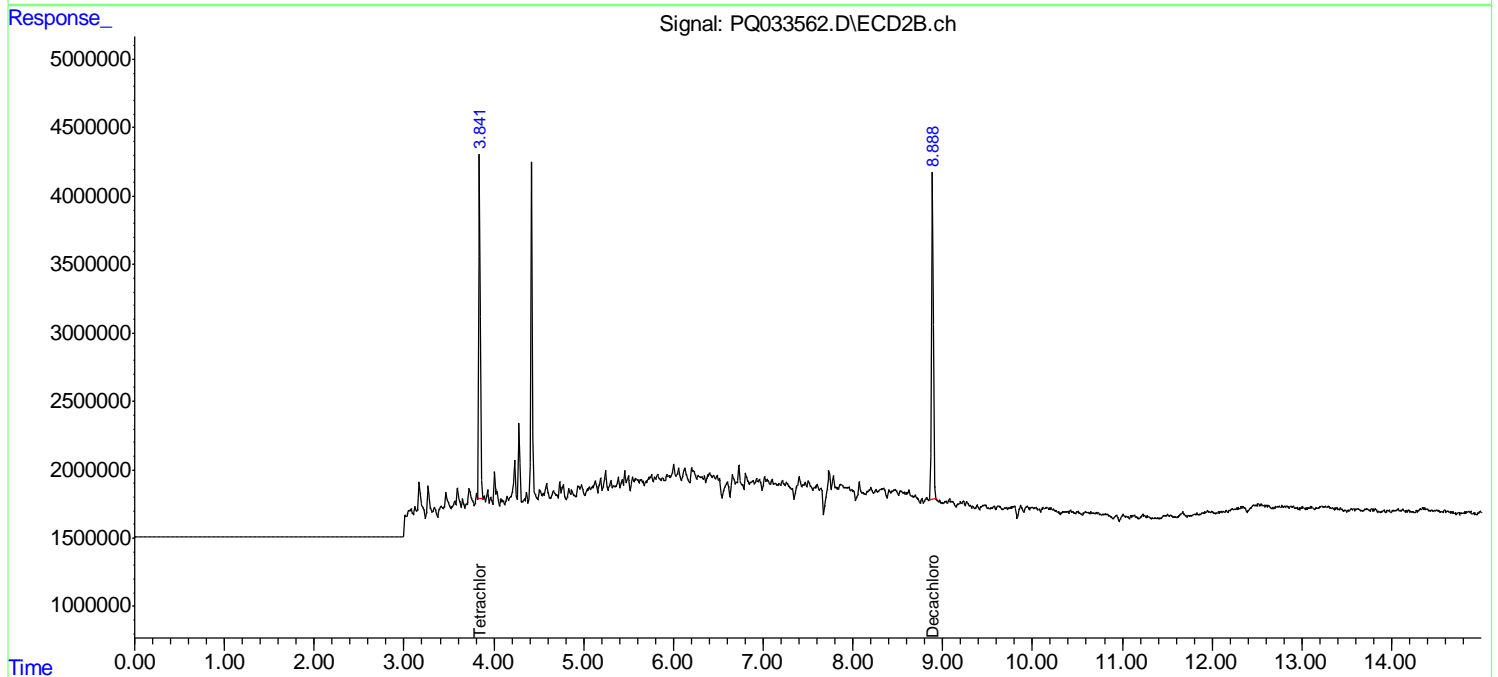
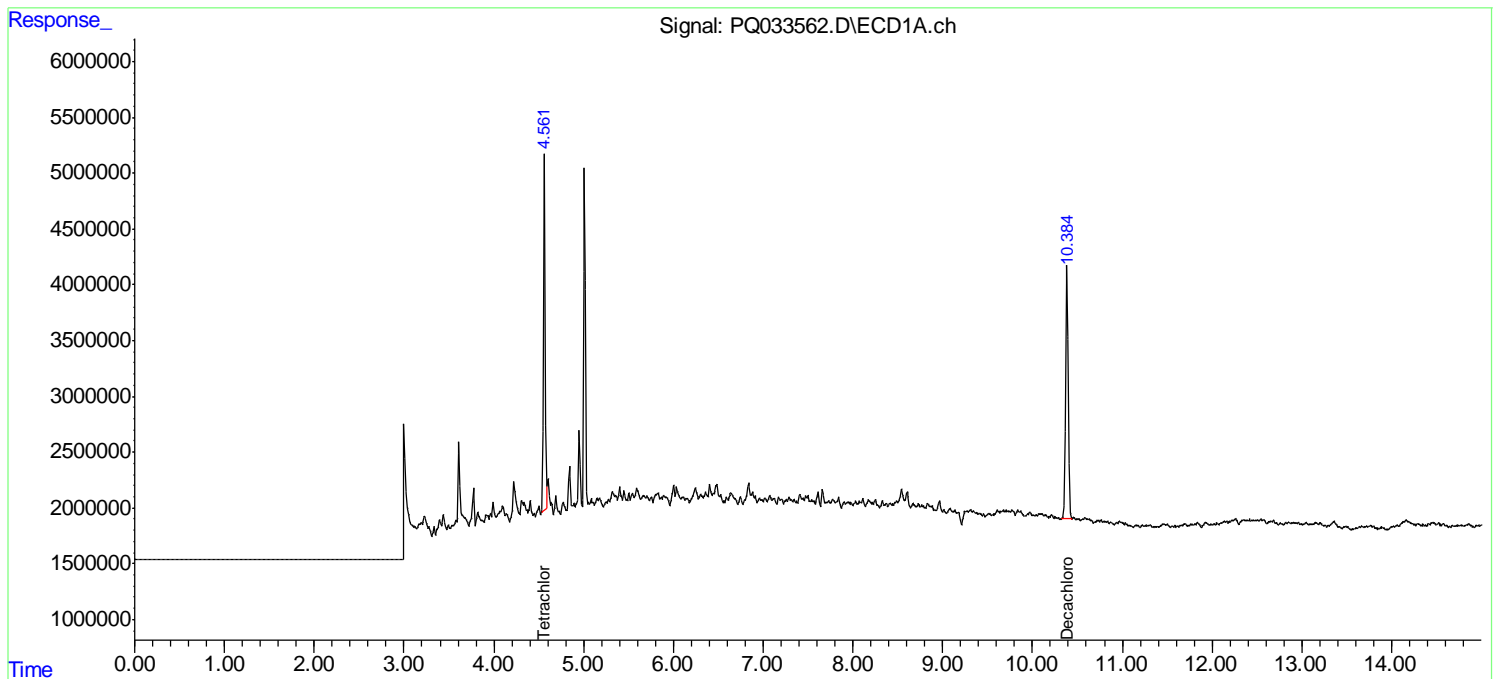
Data Path : Z:\pestpcbsrv\HPCHEM1\ECD_Q\Data\PQ102418\
 Data File : PQ033562.D
 Signal(s) : Signal #1: ECD1A.ch Signal #2: ECD2B.ch
 Acq On : 24 Oct 2018 18:27
 Operator : SM\SJ
 Sample : J5640-04
 Misc :
 ALS Vial : 20 Sample Multiplier: 1

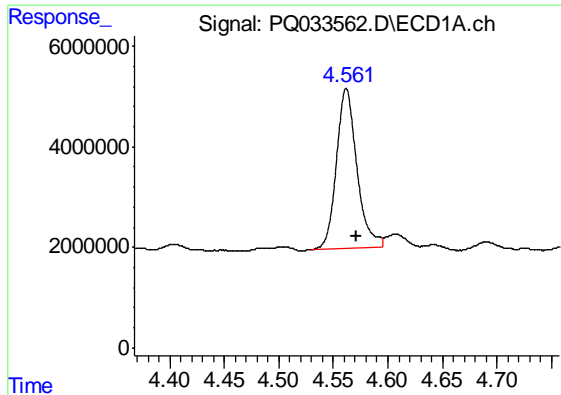
Instrument :
 ECD_Q
ClientSampled :
 102218-JETT-F-U-B

Manual Integrations
APPROVED
 Sohil
 10/26/2018 10:37:50 AM

Integration File signal 1: autoint1.e
 Integration File signal 2: autoint2.e
 Quant Time: Oct 25 01:04:45 2018
 Quant Method : Z:\pestpcbsrv\HPCHEM1\ECD_Q\Method\PQ101918.M
 Quant Title : GC EXTRACTABLES
 QLast Update : Sat Oct 20 01:08:39 2018
 Response via : Initial Calibration
 Integrator: ChemStation

Volume Inj. : 2 µl
 Signal #1 Phase : ZB-MR1 Signal #2 Phase: ZB-MR2
 Signal #1 Info : 30Mx0.32mmx 0.50µ Signal #2 Info : 30M x 0.32mm x 0.25µm

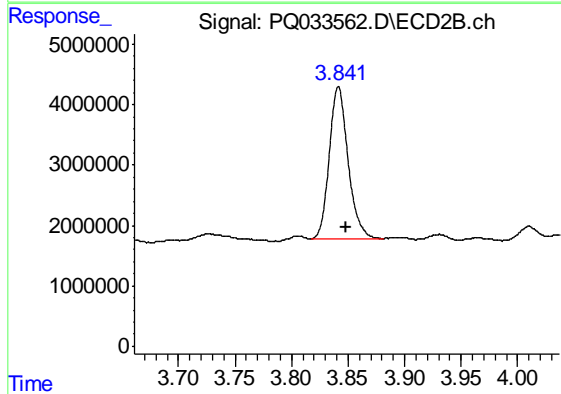




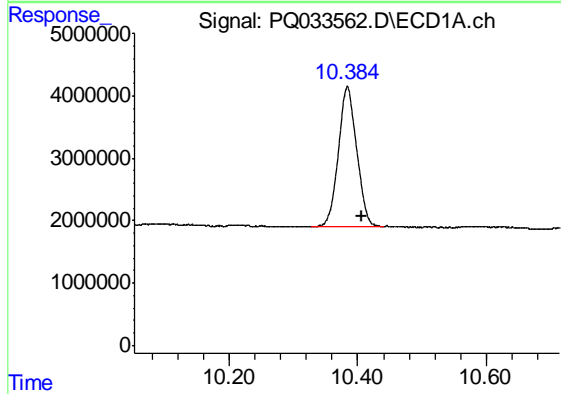
#1 Tetrachloro-m-xylene
 R.T.: 4.562 min
 Delta R.T.: -0.009 min
 Response: 41556063
 Conc: 16.10 ng/ml

Instrument :
 ECD_Q
 ClientSampleId :
 102218-JETT-F-U-B

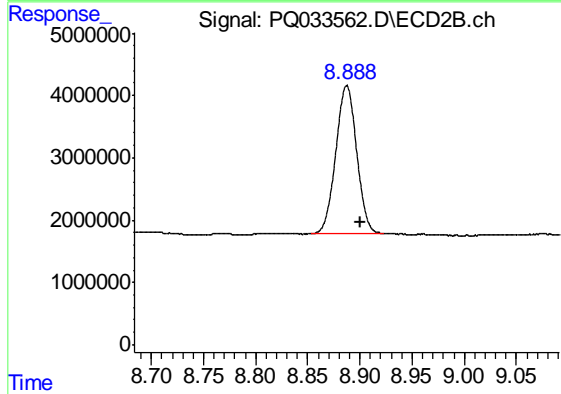
Manual Integrations
 APPROVED
 Sohil
 10/26/2018 10:37:50 AM



#1 Tetrachloro-m-xylene
 R.T.: 3.841 min
 Delta R.T.: -0.007 min
 Response: 28965796
 Conc: 16.37 ng/ml m



#2 Decachlorobiphenyl
 R.T.: 10.384 min
 Delta R.T.: -0.022 min
 Response: 44882109
 Conc: 21.88 ng/ml m



#2 Decachlorobiphenyl
 R.T.: 8.888 min
 Delta R.T.: -0.012 min
 Response: 33193338
 Conc: 20.06 ng/ml m