

Data Path : Z:\pestpcbsrv\HPCHEM1\ECD_Q\Data\PQ102418\
 Data File : PQ033563.D
 Signal(s) : Signal #1: ECD1A.ch Signal #2: ECD2B.ch
 Acq On : 24 Oct 2018 18:45
 Operator : SM\SJ
 Sample : J5640-05
 Misc :
 ALS Vial : 21 Sample Multiplier: 1

Instrument :
 ECD_Q
 ClientSampleId :
 102218-JETT-F-U-M

Manual Integrations
 APPROVED

Sohil
 10/26/2018 10:37:52 AM

Integration File signal 1: autoint1.e
 Integration File signal 2: autoint2.e
 Quant Time: Oct 25 01:05:31 2018
 Quant Method : Z:\pestpcbsrv\HPCHEM1\ECD_Q\Method\PQ101918.M
 Quant Title : GC EXTRACTABLES
 QLast Update : Sat Oct 20 01:08:39 2018
 Response via : Initial Calibration
 Integrator: ChemStation

Volume Inj. : 2 µl
 Signal #1 Phase : ZB-MR1 Signal #2 Phase: ZB-MR2
 Signal #1 Info : 30Mx0.32mmx 0.50µ Signal #2 Info : 30M x 0.32mm x 0.25µm

Compound	RT#1	RT#2	Resp#1	Resp#2	ng/ml	ng/ml
----------	------	------	--------	--------	-------	-------

 System Monitoring Compounds

1) SA Tetrachlo...	4.563	3.842	42358136	29676320	16.410	16.770m
2) SA Decachlor...	10.387	8.887	43099628	32474864	21.007m	19.623m

Target Compounds

(f)=RT Delta > 1/2 Window (#)=Amounts differ by > 25% (m)=manual int.

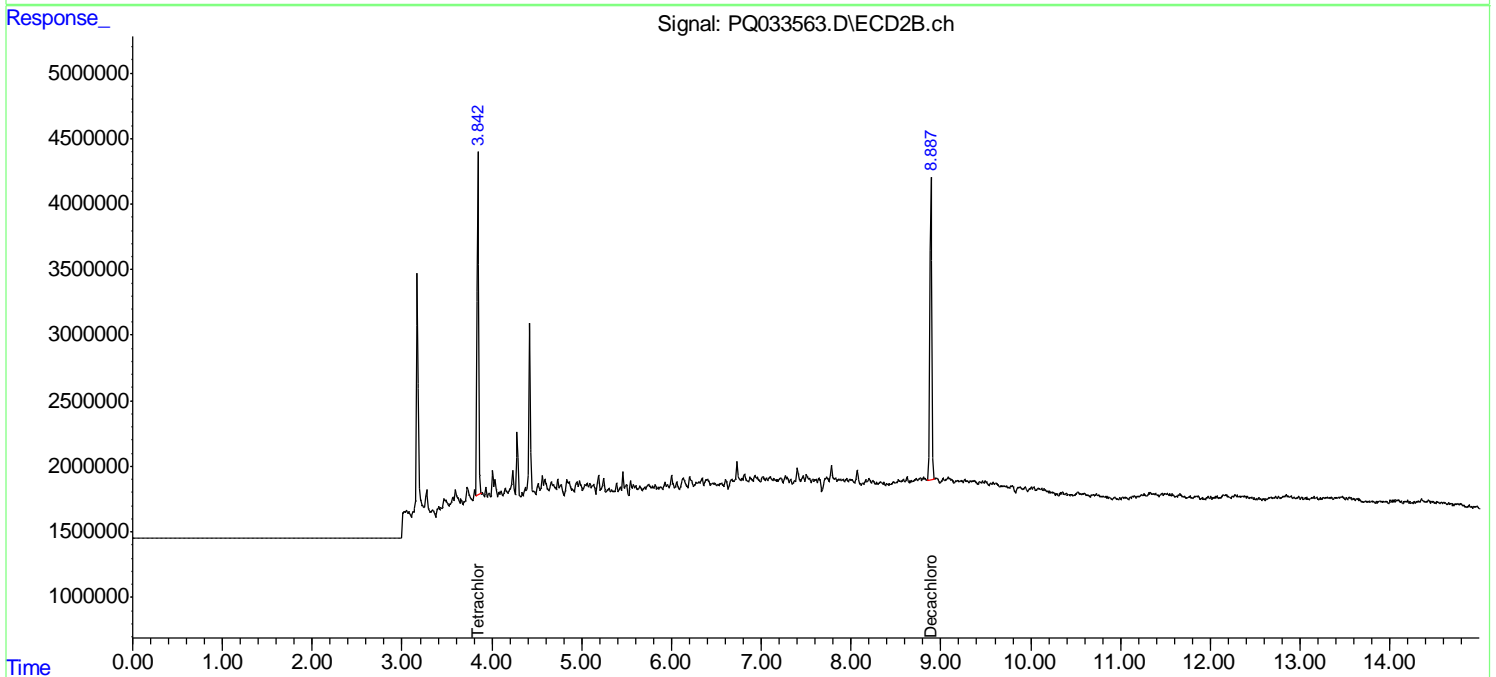
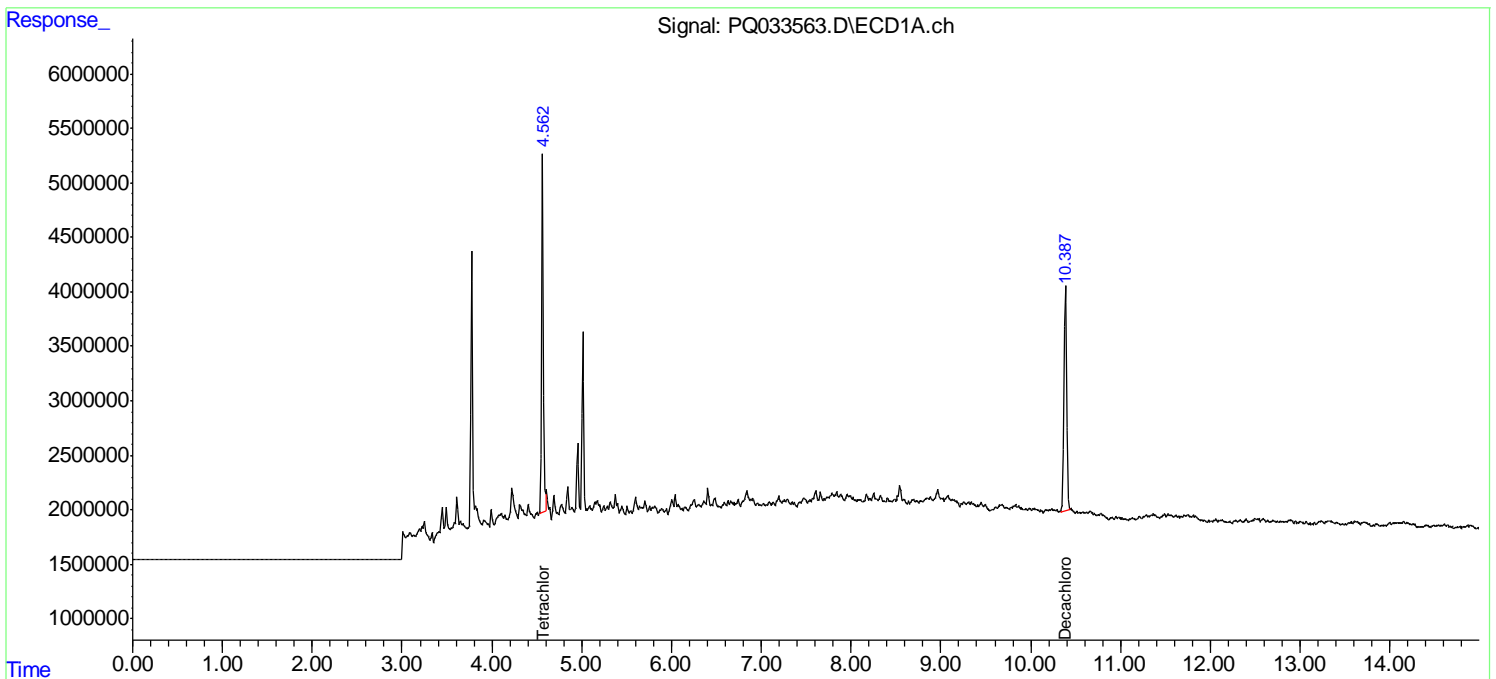
Data Path : Z:\pestpcbsrv\HPCHEM1\ECD_Q\Data\PQ102418\
Data File : PQ033563.D
Signal(s) : Signal #1: ECD1A.ch Signal #2: ECD2B.ch
Acq On : 24 Oct 2018 18:45
Operator : SM\SJ
Sample : J5640-05
Misc :
ALS Vial : 21 Sample Multiplier: 1

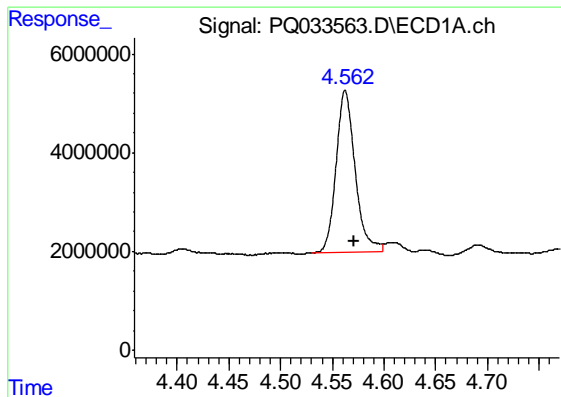
Instrument :
ECD_Q
ClientSampled :
102218-JETT-F-U-M

Manual Integrations
APPROVED
Sohil
10/26/2018 10:37:52 AM

Integration File signal 1: autoint1.e
Integration File signal 2: autoint2.e
Quant Time: Oct 25 01:05:31 2018
Quant Method : Z:\pestpcbsrv\HPCHEM1\ECD_Q\Method\PQ101918.M
Quant Title : GC EXTRACTABLES
QLast Update : Sat Oct 20 01:08:39 2018
Response via : Initial Calibration
Integrator: ChemStation

Volume Inj. : 2 µl
Signal #1 Phase : ZB-MR1 Signal #2 Phase: ZB-MR2
Signal #1 Info : 30Mx0.32mmx 0.50µ Signal #2 Info : 30M x 0.32mm x 0.25µm





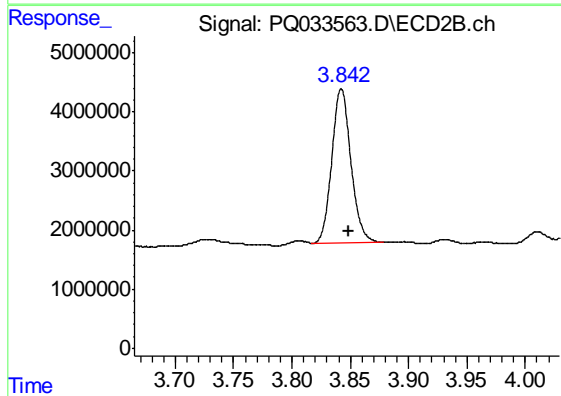
#1 Tetrachloro-m-xylene

R.T.: 4.563 min
Delta R.T.: -0.008 min
Response: 42358136
Conc: 16.41 ng/ml

Instrument :
ECD_Q
ClientSampleId :
102218-JETT-F-U-M

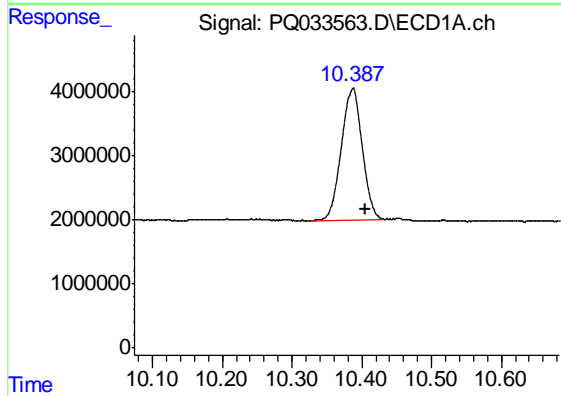
Manual Integrations
APPROVED

Sohil
10/26/2018 10:37:52 AM



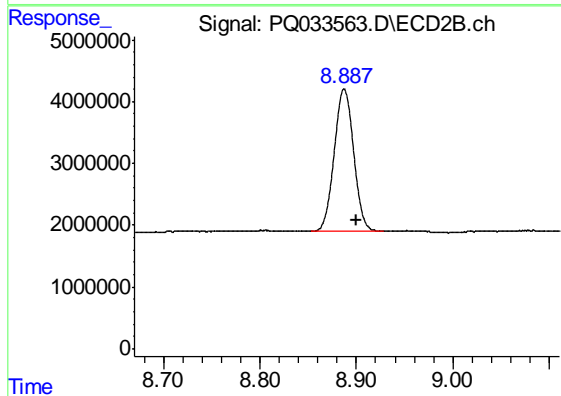
#1 Tetrachloro-m-xylene

R.T.: 3.842 min
Delta R.T.: -0.007 min
Response: 29676320
Conc: 16.77 ng/ml m



#2 Decachlorobiphenyl

R.T.: 10.387 min
Delta R.T.: -0.018 min
Response: 43099628
Conc: 21.01 ng/ml m



#2 Decachlorobiphenyl

R.T.: 8.887 min
Delta R.T.: -0.013 min
Response: 32474864
Conc: 19.62 ng/ml m