

Data Path : Z:\pestpcbsrv\HPCHEM1\ECD_Q\Data\PQ102418\
 Data File : PQ033573.D
 Signal(s) : Signal #1: ECD1A.ch Signal #2: ECD2B.ch
 Acq On : 24 Oct 2018 21:40
 Operator : SM\SJ
 Sample : J5640-13
 Misc :
 ALS Vial : 29 Sample Multiplier: 1

Instrument :
 ECD_Q
 ClientSampleId :
 102218-DBRI-F-D-S

Manual Integrations
 APPROVED

Sohil
 10/26/2018 10:37:16 AM

Integration File signal 1: autoint1.e
 Integration File signal 2: autoint2.e
 Quant Time: Oct 25 01:12:50 2018
 Quant Method : Z:\pestpcbsrv\HPCHEM1\ECD_Q\Method\PQ101918.M
 Quant Title : GC EXTRACTABLES
 QLast Update : Sat Oct 20 01:08:39 2018
 Response via : Initial Calibration
 Integrator: ChemStation

Volume Inj. : 2 µl
 Signal #1 Phase : ZB-MR1 Signal #2 Phase: ZB-MR2
 Signal #1 Info : 30Mx0.32mmx 0.50µ Signal #2 Info : 30M x 0.32mm x 0.25µm

Compound	RT#1	RT#2	Resp#1	Resp#2	ng/ml	ng/ml
----------	------	------	--------	--------	-------	-------

 System Monitoring Compounds

1) SA Tetrachlo...	4.564	3.844	30153586	19431253	11.682m	10.981
2) SA Decachlor...	10.386	8.887	45183239	33343101	22.023m	20.148m

Target Compounds

(f)=RT Delta > 1/2 Window (#)=Amounts differ by > 25% (m)=manual int.

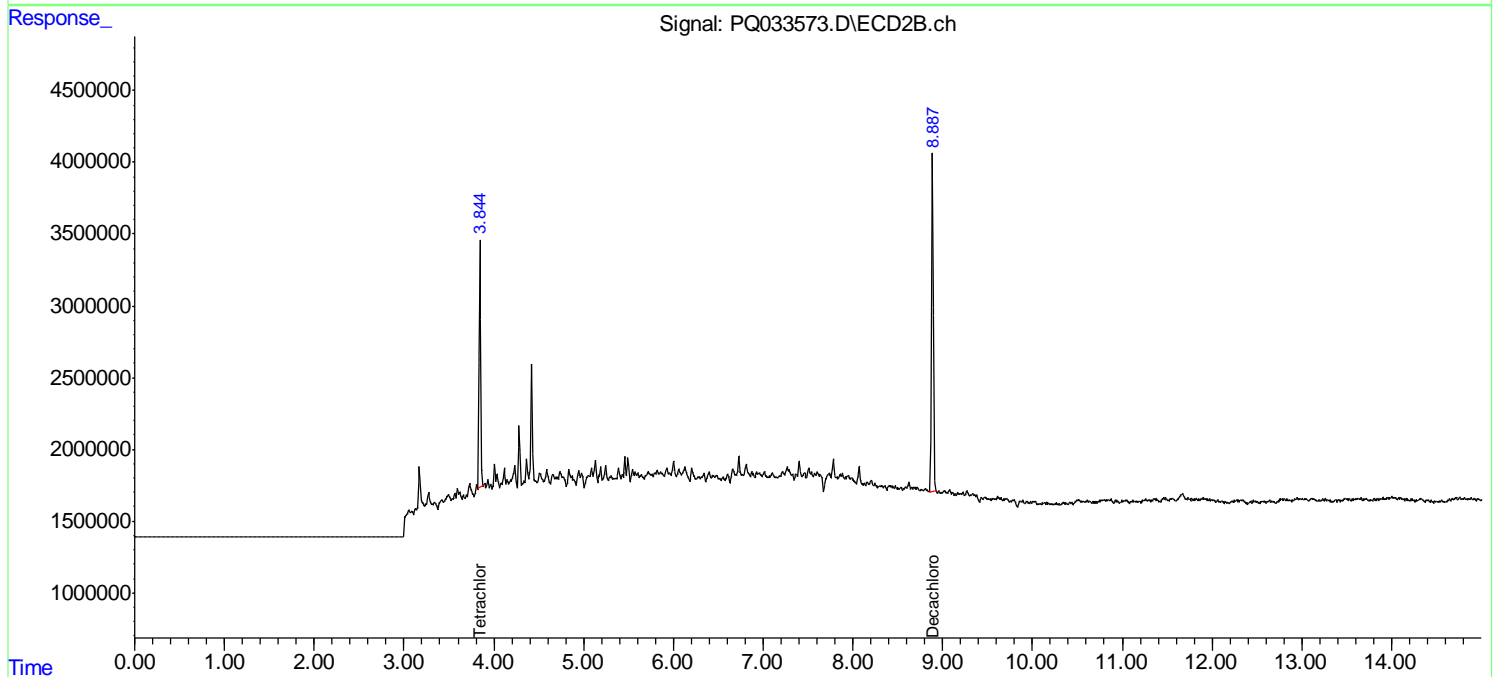
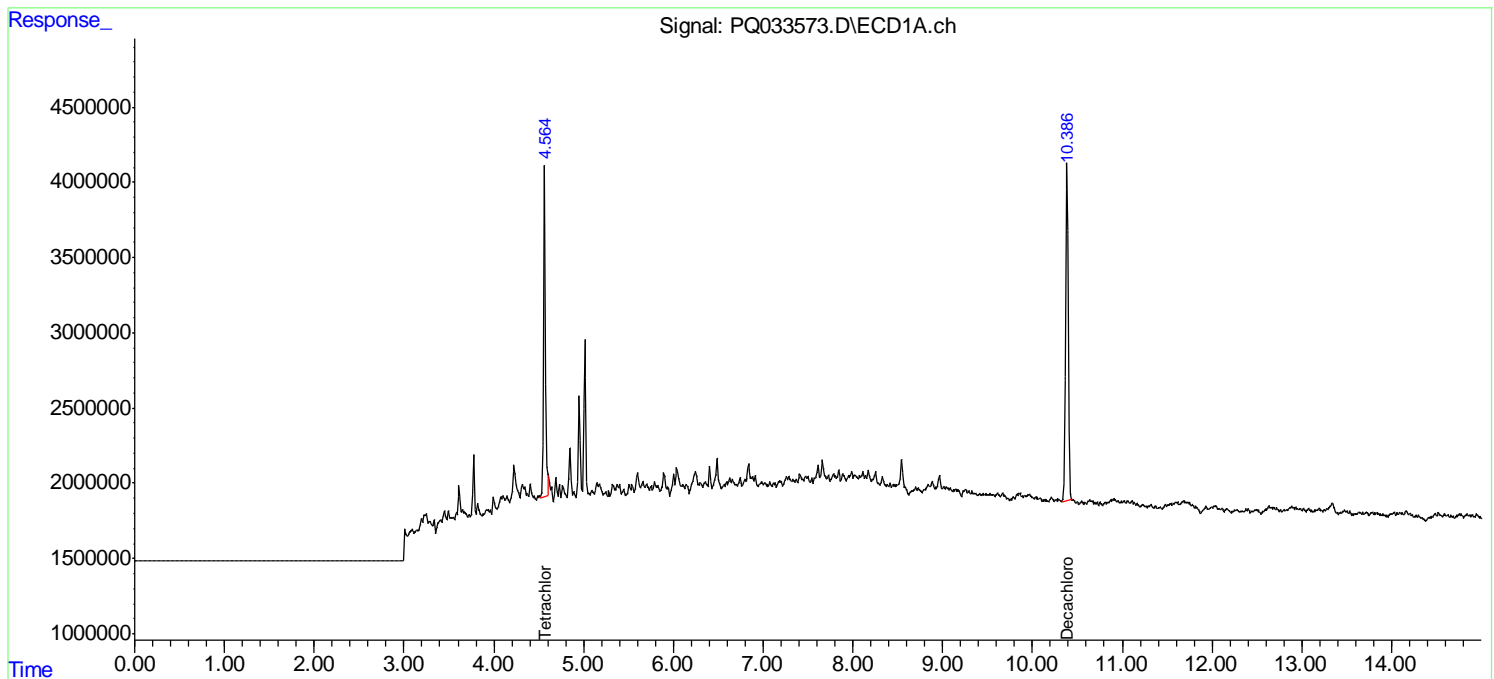
Data Path : Z:\pestpcbsrv\HPCHEM1\ECD_Q\Data\PQ102418\
Data File : PQ033573.D
Signal(s) : Signal #1: ECD1A.ch Signal #2: ECD2B.ch
Acq On : 24 Oct 2018 21:40
Operator : SM\SJ
Sample : J5640-13
Misc :
ALS Vial : 29 Sample Multiplier: 1

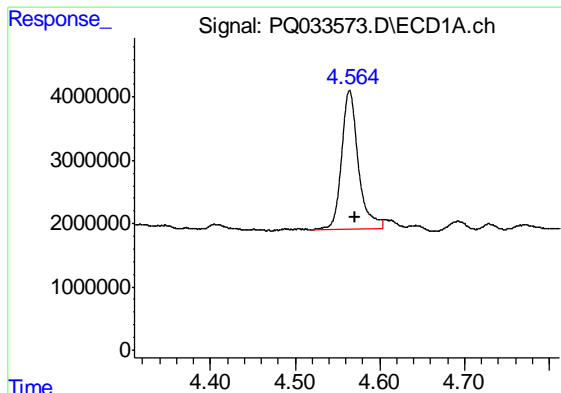
Instrument :
ECD_Q
ClientSampleID :
102218-DBRI-F-D-S

Manual Integrations
APPROVED
Sohil
10/26/2018 10:37:16 AM

Integration File signal 1: autoint1.e
Integration File signal 2: autoint2.e
Quant Time: Oct 25 01:12:50 2018
Quant Method : Z:\pestpcbsrv\HPCHEM1\ECD_Q\Method\PQ101918.M
Quant Title : GC EXTRACTABLES
QLast Update : Sat Oct 20 01:08:39 2018
Response via : Initial Calibration
Integrator: ChemStation

Volume Inj. : 2 µl
Signal #1 Phase : ZB-MR1 Signal #2 Phase: ZB-MR2
Signal #1 Info : 30Mx0.32mmx 0.50µ Signal #2 Info : 30M x 0.32mm x 0.25µm





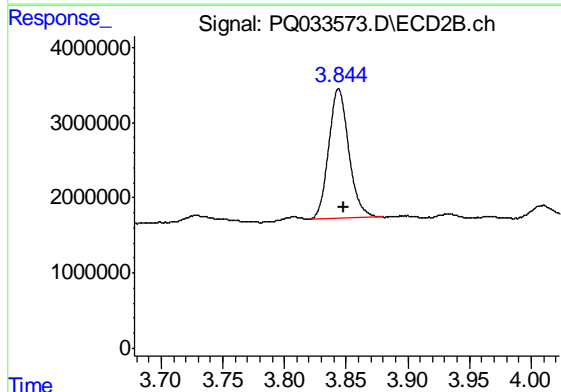
#1 Tetrachloro-m-xylene

R.T.: 4.564 min
 Delta R.T.: -0.007 min
 Response: 30153586
 Conc: 11.68 ng/ml m

Instrument :
 ECD_Q
 ClientSampleId :
 102218-DBRI-F-D-S

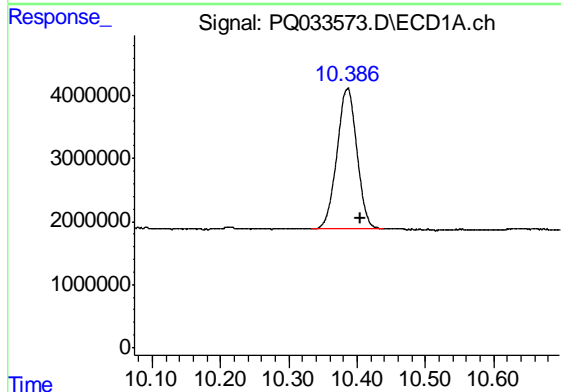
Manual Integrations
 APPROVED

Sohil
 10/26/2018 10:37:16 AM



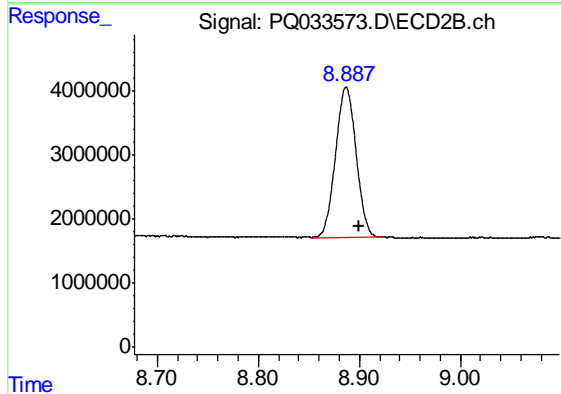
#1 Tetrachloro-m-xylene

R.T.: 3.844 min
 Delta R.T.: -0.004 min
 Response: 19431253
 Conc: 10.98 ng/ml



#2 Decachlorobiphenyl

R.T.: 10.386 min
 Delta R.T.: -0.019 min
 Response: 45183239
 Conc: 22.02 ng/ml m



#2 Decachlorobiphenyl

R.T.: 8.887 min
 Delta R.T.: -0.013 min
 Response: 33343101
 Conc: 20.15 ng/ml m