

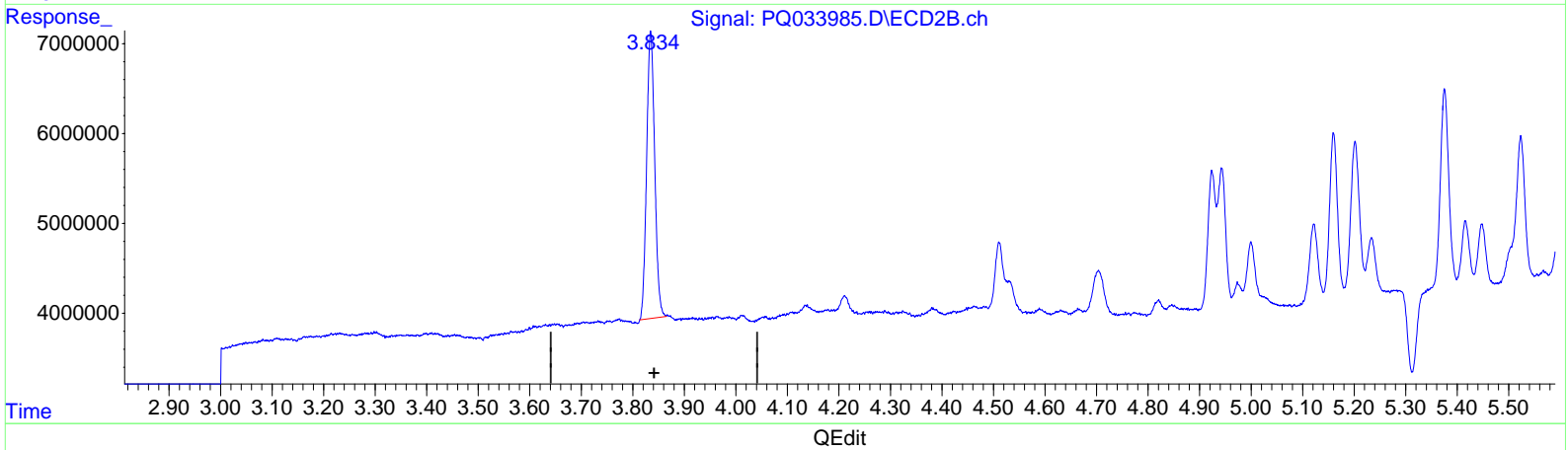
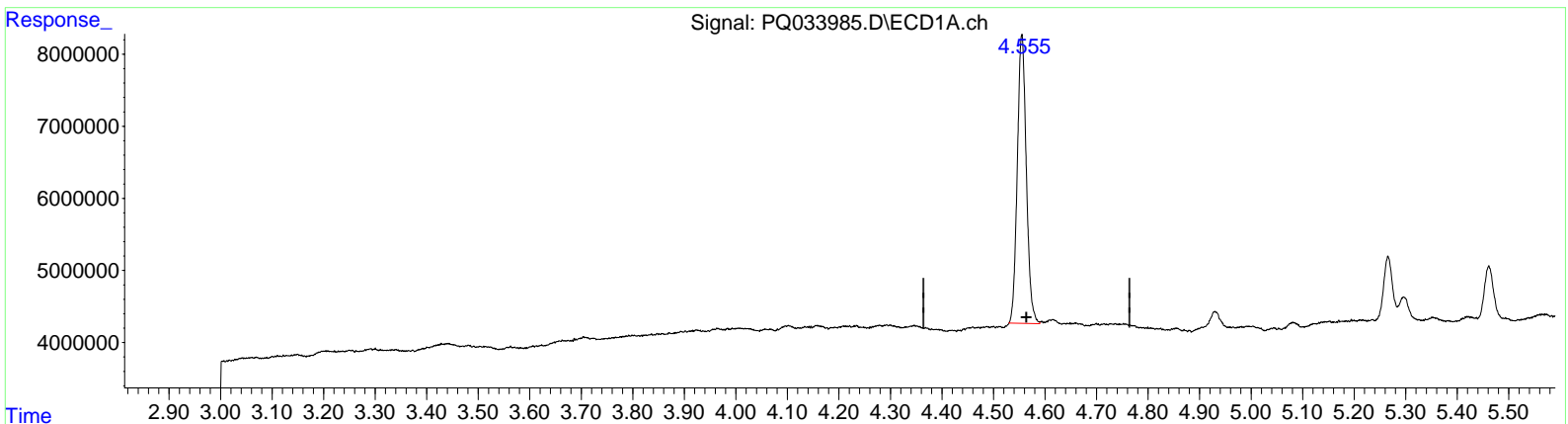
Data Path : Z:\pestpcbsrv\HPCHEM1\ECD_Q\Data\PQ110118\
 Data File : PQ033985.D
 Signal(s) : Signal #1: ECD1A.ch Signal #2: ECD2B.ch
 Acq On : 31 Oct 2018 21:51
 Operator : SM\SJ
 Sample : AR1248CCC400
 Misc :
 ALS Vial : 5 Sample Multiplier: 1

Instrument :
 ECD_Q
LabSampleID :
 AR1248360

Manual Integrations
APPROVED
 Sohil
 11/6/2018 5:00:23 AM

Integration File signal 1: autoint1.e
 Integration File signal 2: autoint2.e
 Quant Time: Nov 01 02:44:27 2018
 Quant Method : Z:\pestpcbsrv\HPCHEM1\ECD_Q\Method\PQ100918CLP.M
 Quant Title : GC EXTRACTABLES
 QLast Update : Tue Oct 30 17:29:03 2018
 Response via : Initial Calibration
 Integrator: ChemStation

Volume Inj. : 1 µl
 Signal #1 Phase : ZB MR1 Signal #2 Phase: ZB MR2
 Signal #1 Info : 30Mx0.32mmx 0.5µm Signal #2 Info : 30M x 0.32mm x 0.25µm



(1) Tetrachloro-m-xylene (SA)
 4.555min 23.711 ng/ml
 response 48643290

(1) Tetrachloro-m-xylene #2 (SA)
 3.834min 22.317 ng/ml m
 response 34709955

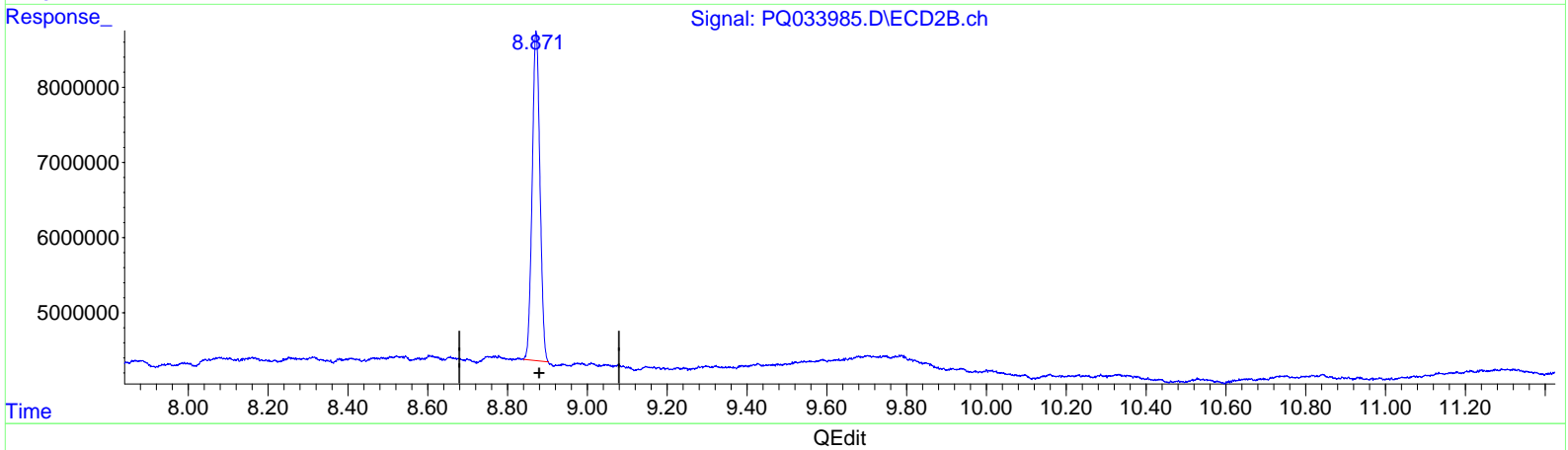
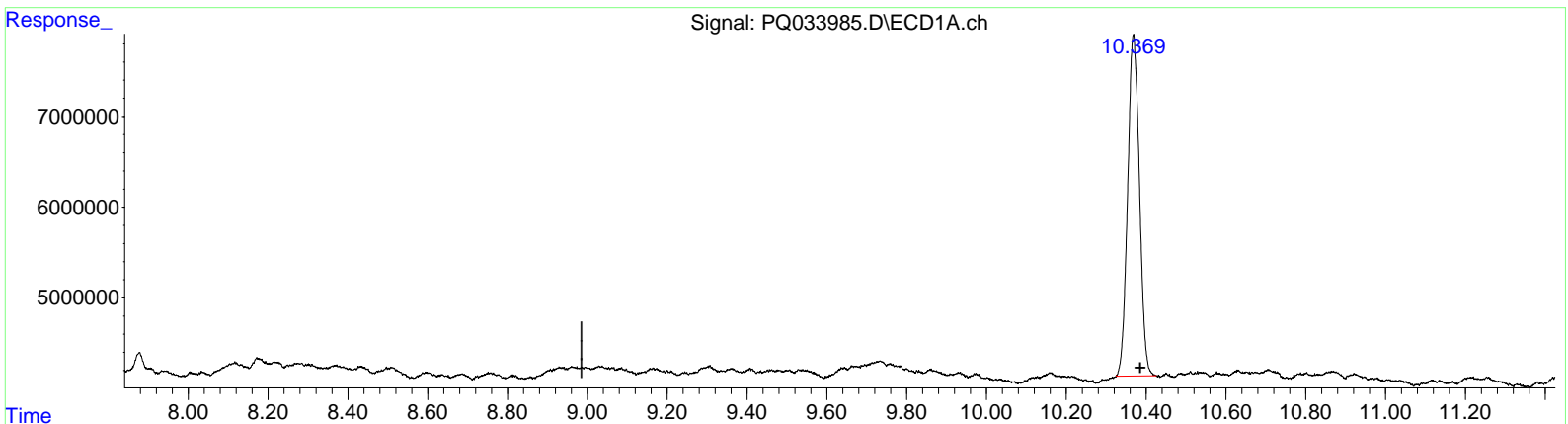
Data Path : Z:\pestpcbsrv\HPCHEM1\ECD_Q\Data\PQ110118\
 Data File : PQ033985.D
 Signal(s) : Signal #1: ECD1A.ch Signal #2: ECD2B.ch
 Acq On : 31 Oct 2018 21:51
 Operator : SM\SJ
 Sample : AR1248CCC400
 Misc :
 ALS Vial : 5 Sample Multiplier: 1

Instrument :
 ECD_Q
LabSampleId :
 AR1248360

Manual Integrations
APPROVED
 Sohil
 11/6/2018 5:00:23 AM

Integration File signal 1: autoint1.e
 Integration File signal 2: autoint2.e
 Quant Time: Nov 01 02:44:27 2018
 Quant Method : Z:\pestpcbsrv\HPCHEM1\ECD_Q\Method\PQ100918CLP.M
 Quant Title : GC EXTRACTABLES
 QLast Update : Tue Oct 30 17:29:03 2018
 Response via : Initial Calibration
 Integrator: ChemStation

Volume Inj. : 1 µl
 Signal #1 Phase : ZB MR1 Signal #2 Phase: ZB MR2
 Signal #1 Info : 30Mx0.32mmx 0.5µm Signal #2 Info : 30M x 0.32mm x 0.25µm



(2) Decachlorobiphenyl (SA)
 10.369min 40.645 ng/ml m
 response 76830362

(2) Decachlorobiphenyl #2 (SA)
 8.871min 36.795 ng/ml m
 response 59149731

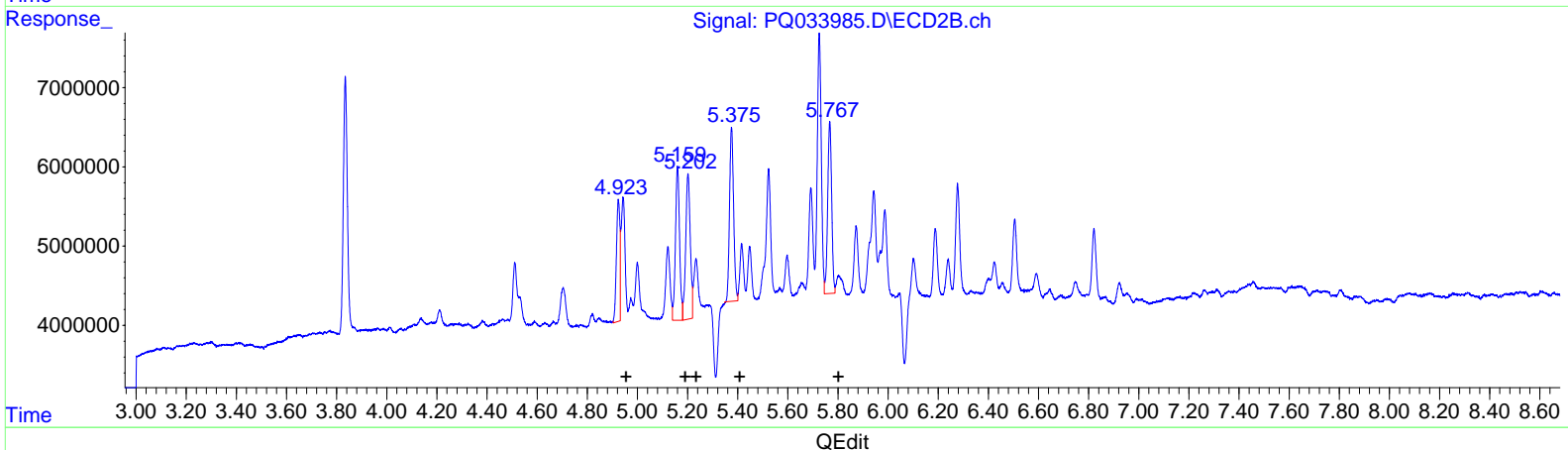
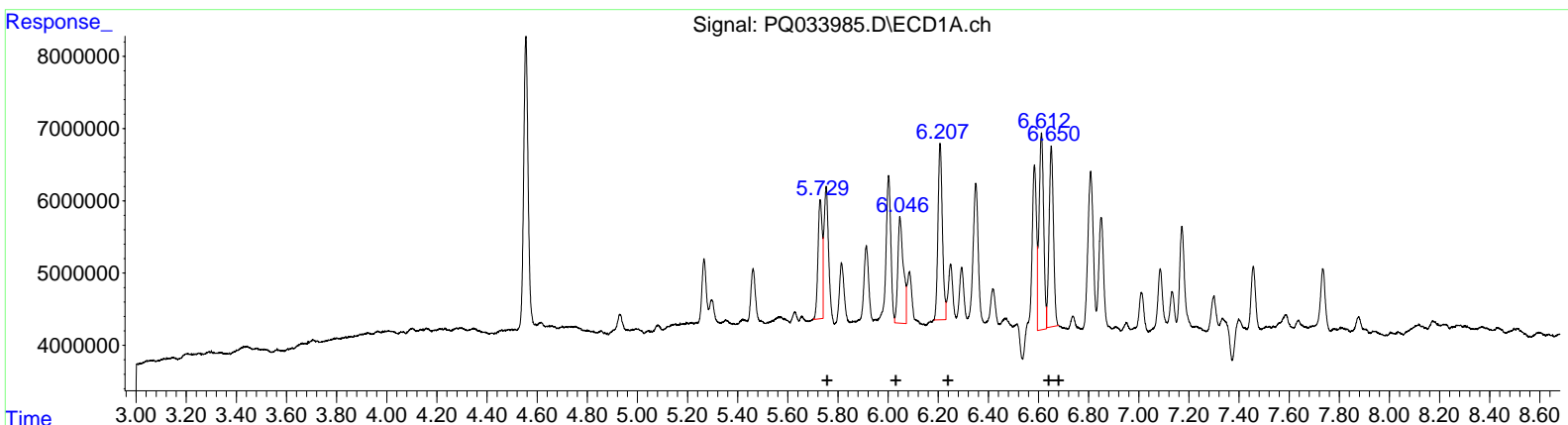
Data Path : Z:\pestpcbsrv\HPCHEM1\ECD_Q\Data\PQ110118\
 Data File : PQ033985.D
 Signal(s) : Signal #1: ECD1A.ch Signal #2: ECD2B.ch
 Acq On : 31 Oct 2018 21:51
 Operator : SM\SJ
 Sample : AR1248CCC400
 Misc :
 ALS Vial : 5 Sample Multiplier: 1

Instrument :
 ECD_Q
LabSampleId :
 AR1248360

Manual Integrations
APPROVED
 Sohil
 11/6/2018 5:00:23 AM

Integration File signal 1: autoint1.e
 Integration File signal 2: autoint2.e
 Quant Time: Nov 01 02:44:27 2018
 Quant Method : Z:\pestpcbsrv\HPCHEM1\ECD_Q\Method\PQ100918CLP.M
 Quant Title : GC EXTRACTABLES
 QLast Update : Tue Oct 30 17:29:03 2018
 Response via : Initial Calibration
 Integrator: ChemStation

Volume Inj. : 1 µl
 Signal #1 Phase : ZB MR1 Signal #2 Phase: ZB MR2
 Signal #1 Info : 30Mx0.32mmx 0.5µm Signal #2 Info : 30M x 0.32mm x 0.25µm



QEdit

(21) AR-1248-1 (L5)		
R.T.	Response	Conc
5.73	19780950	398.79
6.05	22430226	304.96
6.21	29998919	367.07
6.61	34812794	371.65
6.65	30165004	339.66

(21) AR-1248-1 #2 (L5)		
R.T.	Response	Conc
4.92	14537078	354.74
5.16	22188544	403.87
5.20	23184748	413.99
5.37	24822981	359.92
5.77	24044642	347.83

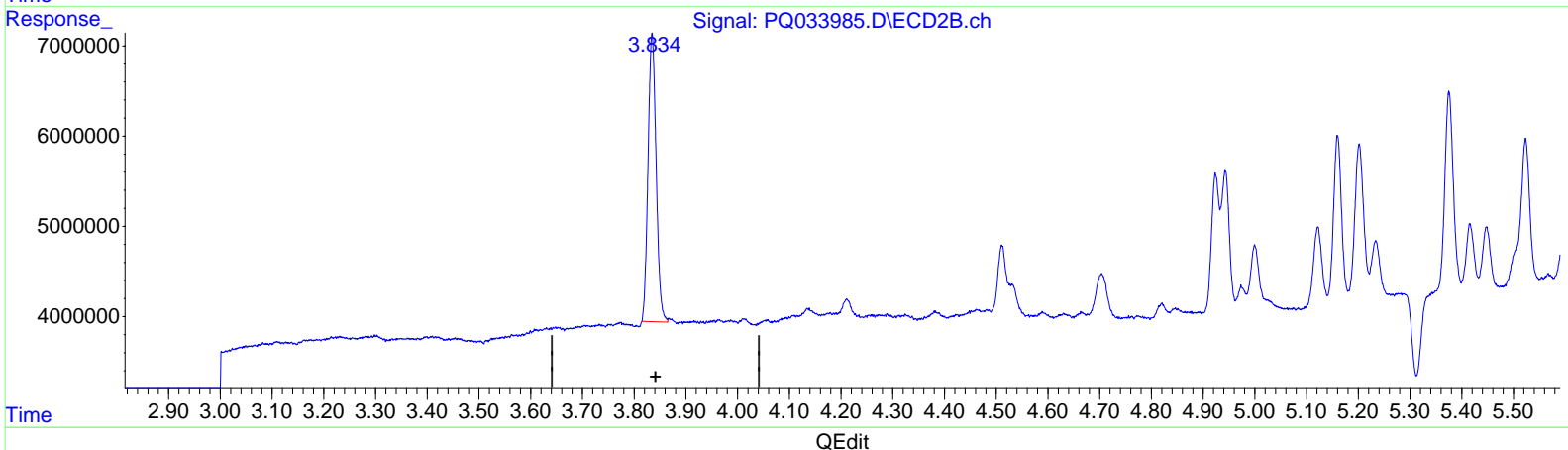
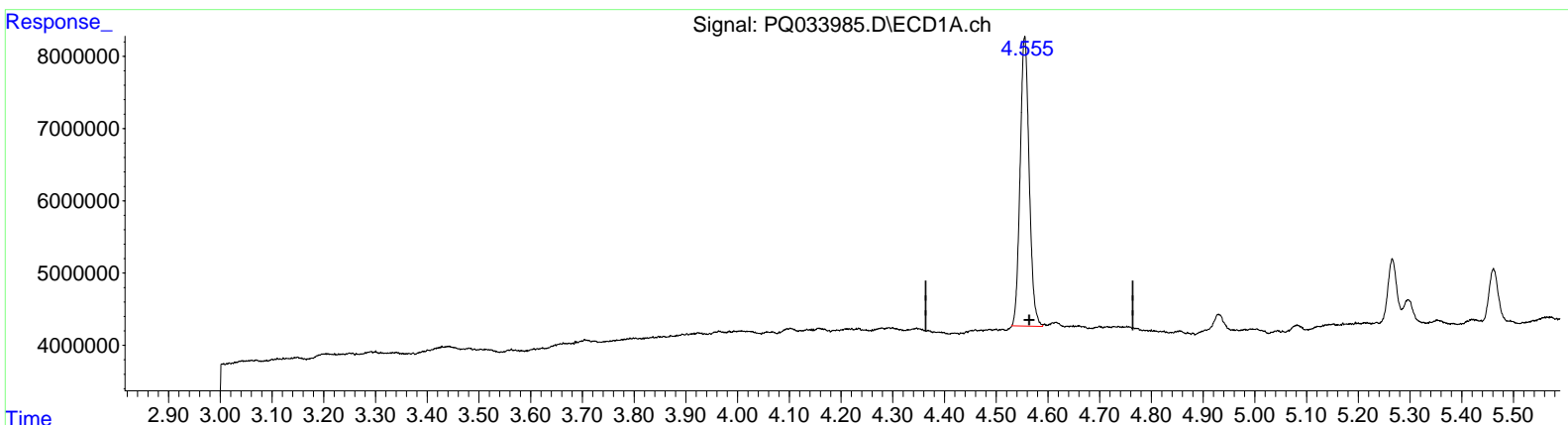
Data Path : Z:\pestpcbsrv\HPCHEM1\ECD_Q\Data\PQ110118\
 Data File : PQ033985.D
 Signal(s) : Signal #1: ECD1A.ch Signal #2: ECD2B.ch
 Acq On : 31 Oct 2018 21:51
 Operator : SM\SJ
 Sample : AR1248CCC400
 Misc :
 ALS Vial : 5 Sample Multiplier: 1

Instrument :
 ECD_Q
LabSampleID :
 AR1248360

Manual Integrations
APPROVED
 Sohil
 11/6/2018 5:00:23 AM

Integration File signal 1: autoint1.e
 Integration File signal 2: autoint2.e
 Quant Time: Nov 13 00:59:03 2018
 Quant Method : Z:\pestpcbsrv\HPCHEM1\ECD_Q\Method\PQ100918CLP.M
 Quant Title : GC EXTRACTABLES
 QLast Update : Tue Oct 30 17:29:03 2018
 Response via : Initial Calibration
 Integrator: ChemStation

Volume Inj. : 1 µl
 Signal #1 Phase : ZB MR1 Signal #2 Phase: ZB MR2
 Signal #1 Info : 30Mx0.32mmx 0.5µm Signal #2 Info : 30M x 0.32mm x 0.25µm



(1) Tetrachloro-m-xylene (SA)
 4.555min 23.711 ng/ml
 response 48643290

(1) Tetrachloro-m-xylene #2 (SA)
 3.835min 22.374 ng/ml
 response 34798991

Quantitation Report (Qedit)

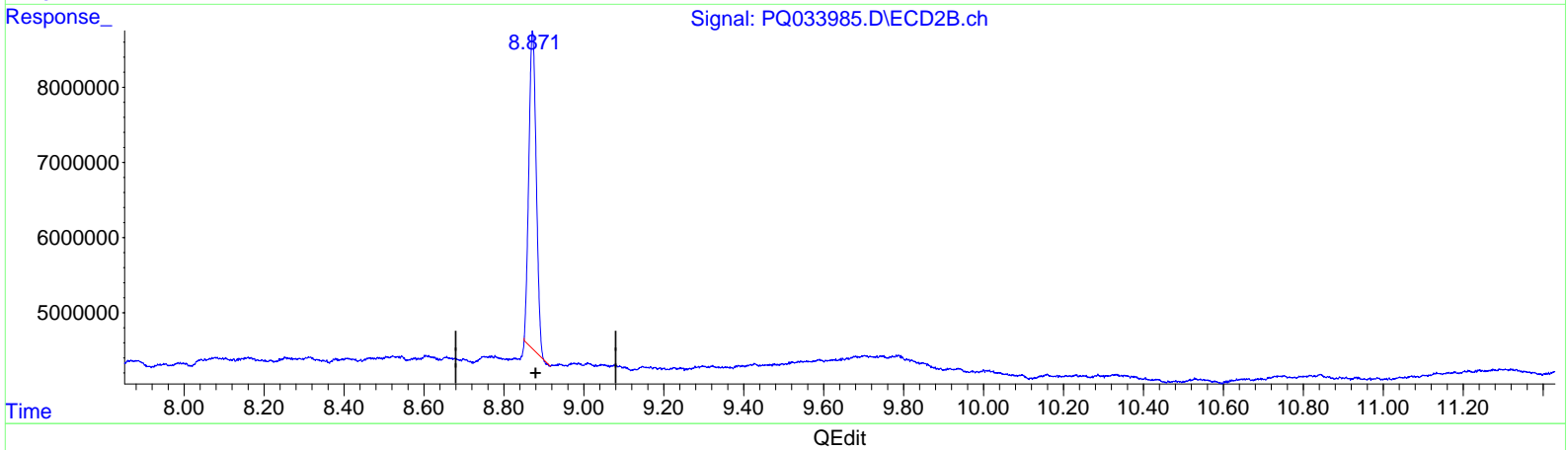
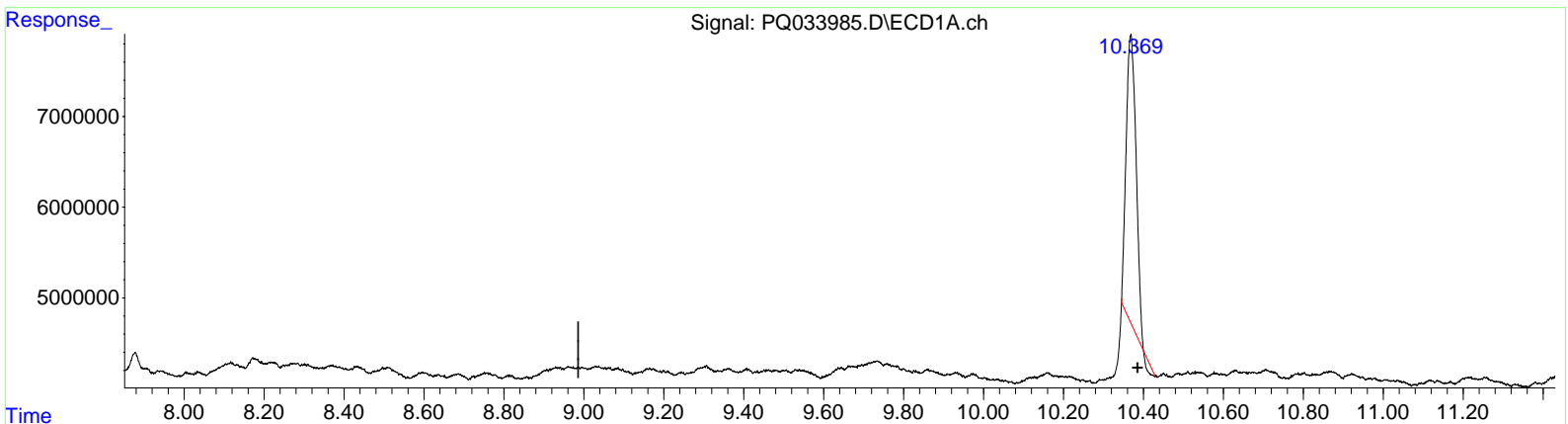
Data Path : Z:\pestpcbsrv\HPCHEM1\ECD_Q\Data\PQ110118\
 Data File : PQ033985.D
 Signal(s) : Signal #1: ECD1A.ch Signal #2: ECD2B.ch
 Acq On : 31 Oct 2018 21:51
 Operator : SM\SJ
 Sample : AR1248CCC400
 Misc :
 ALS Vial : 5 Sample Multiplier: 1

Instrument :
 ECD_Q
LabSampleId :
 AR1248360

Manual Integrations
APPROVED
 Sohil
 11/6/2018 5:00:23 AM

Integration File signal 1: autoint1.e
 Integration File signal 2: autoint2.e
 Quant Time: Nov 13 00:59:03 2018
 Quant Method : Z:\pestpcbsrv\HPCHEM1\ECD_Q\Method\PQ100918CLP.M
 Quant Title : GC EXTRACTABLES
 QLast Update : Tue Oct 30 17:29:03 2018
 Response via : Initial Calibration
 Integrator: ChemStation

Volume Inj. : 1 µl
 Signal #1 Phase : ZB MR1 Signal #2 Phase: ZB MR2
 Signal #1 Info : 30Mx0.32mmx 0.5µm Signal #2 Info : 30M x 0.32mm x 0.25µm



(2) Decachlorobiphenyl (SA)
 10.369min 28.494 ng/ml
 response 53862445

(2) Decachlorobiphenyl #2 (SA)
 8.872min 33.837 ng/ml
 response 54395563

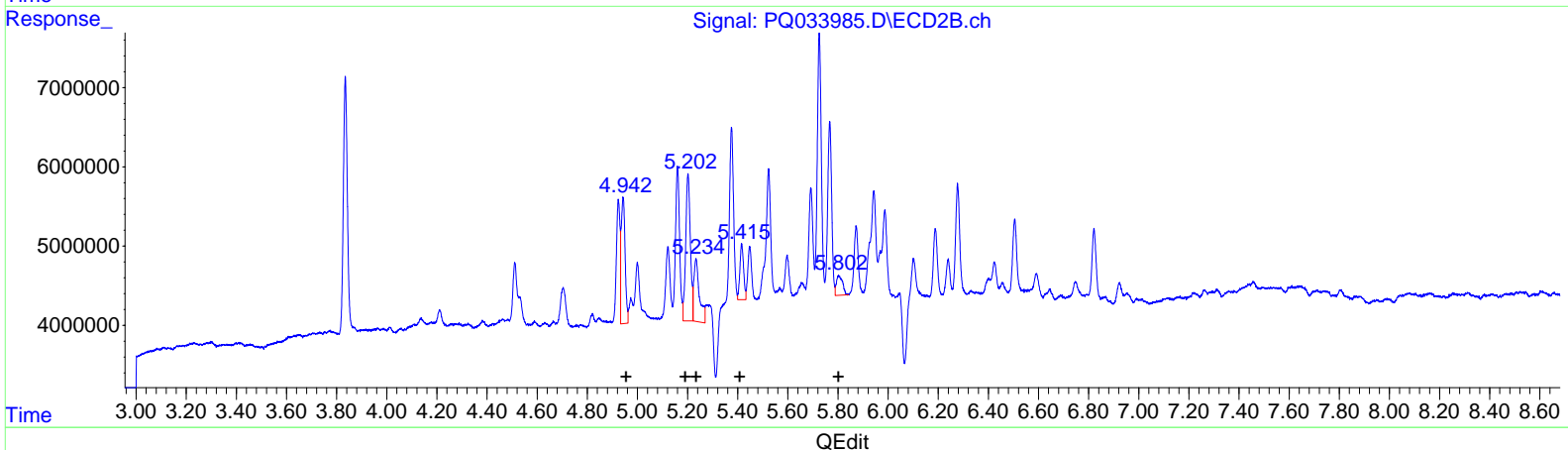
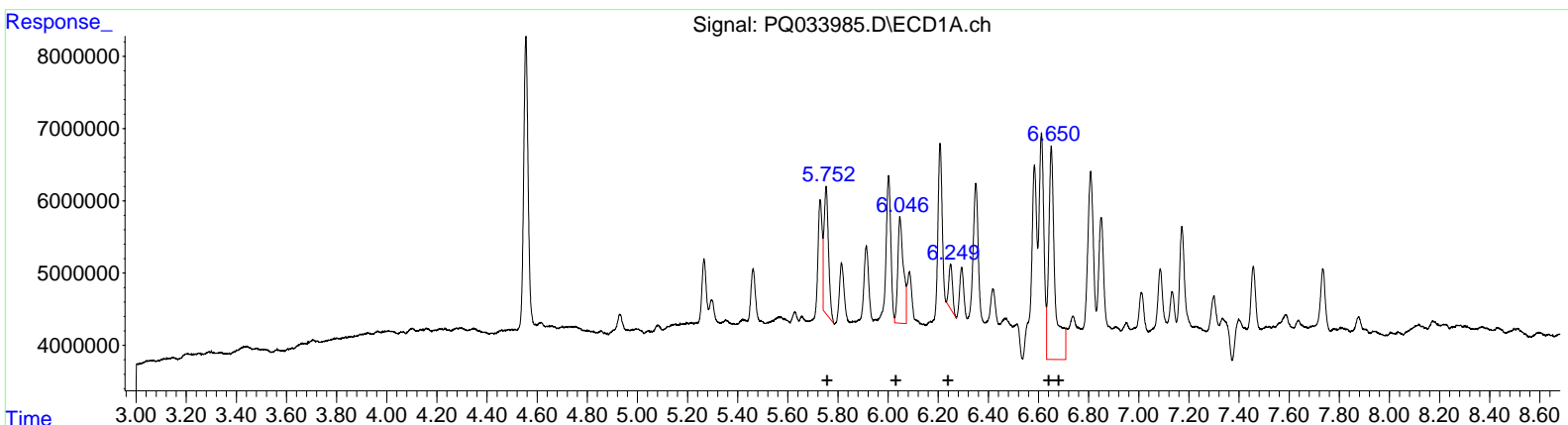
Data Path : Z:\pestpcbsrv\HPCHEM1\ECD_Q\Data\PQ110118\
 Data File : PQ033985.D
 Signal(s) : Signal #1: ECD1A.ch Signal #2: ECD2B.ch
 Acq On : 31 Oct 2018 21:51
 Operator : SM\SJ
 Sample : AR1248CCC400
 Misc :
 ALS Vial : 5 Sample Multiplier: 1

Instrument :
 ECD_Q
LabSampleID :
 AR1248360

Manual Integrations
APPROVED
 Sohil
 11/6/2018 5:00:23 AM

Integration File signal 1: autoint1.e
 Integration File signal 2: autoint2.e
 Quant Time: Nov 13 00:59:03 2018
 Quant Method : Z:\pestpcbsrv\HPCHEM1\ECD_Q\Method\PQ100918CLP.M
 Quant Title : GC EXTRACTABLES
 QLast Update : Tue Oct 30 17:29:03 2018
 Response via : Initial Calibration
 Integrator: ChemStation

Volume Inj. : 1 µl
 Signal #1 Phase : ZB MR1 Signal #2 Phase: ZB MR2
 Signal #1 Info : 30Mx0.32mmx 0.5µm Signal #2 Info : 30M x 0.32mm x 0.25µm



(21) AR-1248-1 (L5)

R.T.	Response	Conc
5.75	22161090	446.77
6.05	22430226	304.96
6.25	6344540	77.63
6.65	51074330	545.25
6.65	51074330	575.11

(21) AR-1248-1 #2 (L5)

R.T.	Response	Conc
4.94	17570843	428.77
5.20	23739908	432.11
5.23	12077791	215.67
5.42	7244638	105.04
5.80	4283699	61.97

Quantitation Report (QT Reviewed)

Data Path : Z:\pestpcbsrv\HPCHEM1\ECD_Q\Data\PQ110118\
 Data File : PQ033985.D
 Signal(s) : Signal #1: ECD1A.ch Signal #2: ECD2B.ch
 Acq On : 31 Oct 2018 21:51
 Operator : SM\SJ
 Sample : AR1248CCC400
 Misc :
 ALS Vial : 5 Sample Multiplier: 1

Instrument :
 ECD_Q
 LabSampleId :
 AR1248360

Manual Integrations
 APPROVED

Sohil
 11/6/2018 5:00:23 AM

Integration File signal 1: autoint1.e
 Integration File signal 2: autoint2.e
 Quant Time: Nov 01 02:44:27 2018
 Quant Method : Z:\pestpcbsrv\HPCHEM1\ECD_Q\Method\PQ100918CLP.M
 Quant Title : GC EXTRACTABLES
 QLast Update : Tue Oct 30 17:29:03 2018
 Response via : Initial Calibration
 Integrator: ChemStation

Volume Inj. : 1 µl
 Signal #1 Phase : ZB MR1 Signal #2 Phase: ZB MR2
 Signal #1 Info : 30Mx0.32mmx 0.5µm Signal #2 Info : 30M x 0.32mm x 0.25µm

Compound	RT#1	RT#2	Resp#1	Resp#2	ng/ml	ng/ml

System Monitoring Compounds						
1) SA Tetrachlo...	4.555	3.834	48643290	34709955	23.711	22.317m
2) SA Decachlor...	10.369	8.871	76830362	59149731	40.645m	36.795m
Target Compounds						
21) L5 AR-1248-1	5.729	4.923	19780950	14537078	398.788m	354.737m
22) L5 AR-1248-2	6.047	5.159	22430226	22188544	304.956	403.873m#
23) L5 AR-1248-3	6.207	5.202	29998919	23184748	367.074m	413.994m
24) L5 AR-1248-4	6.612	5.375	34812794	24822981	371.648m	359.915m
25) L5 AR-1248-5	6.650	5.767	30165004	24044642	339.664m	347.829m

SJ 11/3/18

(f)=RT Delta > 1/2 Window (#)=Amounts differ by > 25% (m)=manual int.