

Data Path : Z:\pestpcbsrv\HPCHEM1\ECD_Q\Data\PQ110119\
 Data File : PQ044684.D
 Signal(s) : Signal #1: ECD1A.ch Signal #2: ECD2B.ch
 Acq On : 01 Nov 2019 16:21
 Operator : HP\AJ
 Sample : HEXANE
 Misc :
 ALS Vial : 1 Sample Multiplier: 1

Instrument :
 ECD_Q
 ClientSampleId :
 HEXANE

Integration File signal 1: autoint1.e
 Integration File signal 2: autoint2.e
 Quant Time: Nov 02 05:33:21 2019
 Quant Method : Z:\pestpcbsrv\HPCHEM1\ECD_Q\Method\PQ110119CLP.M
 Quant Title : GC EXTRACTABLES
 QLast Update : Sat Nov 02 05:31:51 2019
 Response via : Initial Calibration
 Integrator: ChemStation

Volume Inj. : 1 µl
 Signal #1 Phase : ZB MR1 Signal #2 Phase: ZB MR2
 Signal #1 Info : 30Mx0.32mmx 0.5µm Signal #2 Info : 30M x 0.32mm x 0.25µm

Compound	RT#1	RT#2	Resp#1	Resp#2	ng/ml	ng/ml

System Monitoring Compounds						
1) SA Tetrachlo...	5.344	0.000	498097	0	0.084	N.D. #
2) SA Decachlor...	0.000	9.681	0	53480	N.D.	0.009 #
Target Compounds						
3) L1 AR-1016-1	0.000	5.620	0	149050	N.D.	1.217 #
4) L1 AR-1016-2	0.000	5.620	0	149050	N.D.	0.821 #
5) L1 AR-1016-3	0.000	5.830	0	297014	N.D.	3.193 #
6) L1 AR-1016-4	0.000	5.863	0	83757	N.D.	1.020 #
7) L1 AR-1016-5	0.000	6.100	0	76203	N.D.	0.708 #
8) L2 AR-1221-1	0.000	4.582	0	198840	N.D.	5.471 #
12) L3 AR-1232-2	0.000	5.620	0	149050	N.D.	1.893 #
13) L3 AR-1232-3	0.000	5.830	0	297014	N.D.	7.503 #
14) L3 AR-1232-4	0.000	5.880	0	19839	N.D.	0.508 #
15) L3 AR-1232-5	0.000	6.100	0	76203	N.D.	1.776 #
16) L4 AR-1242-1	0.000	5.620	0	149050	N.D.	1.458 #
17) L4 AR-1242-2	0.000	5.620	0	149050	N.D.	1.014 #
18) L4 AR-1242-3	0.000	5.830	0	297014	N.D.	3.847 #
19) L4 AR-1242-4	0.000	5.880	0	19839	N.D.	0.241 #
20) L4 AR-1242-5	0.000	6.503	0	306389	N.D.	2.773 #
21) L5 AR-1248-1	0.000	5.620	0	149050	N.D.	1.886 #
22) L5 AR-1248-2	0.000	5.863	0	83757	N.D.	0.711 #
23) L5 AR-1248-3	0.000	5.880	0	19839	N.D.	0.164 #
24) L5 AR-1248-4	0.000	6.100	0	76203	N.D.	0.518 #
25) L5 AR-1248-5	0.000	6.503	0	306389	N.D.	2.047 #
26) L6 AR-1254-1	0.000	6.503	0	306389	N.D.	1.236 #
27) L6 AR-1254-2	0.000	6.691	0	95055	N.D.	0.426 #
28) L6 AR-1254-3	0.000	7.057	0	868753	N.D.	2.283 #
29) L6 AR-1254-4	0.000	7.257	0	470254	N.D.	1.914 #
30) L6 AR-1254-5	0.000	7.732	0	88150	N.D.	0.242 #
31) L7 AR-1260-1	0.000	7.197	0	552761	N.D.	2.495 #
32) L7 AR-1260-2	0.000	7.385	0	309300	N.D.	1.099 #
33) L7 AR-1260-3	0.000	7.612	0	349973	N.D.	1.371 #
35) L7 AR-1260-5	9.498	8.261	1415938	10715	3.116	0.017 #
36) L8 AR-1262-1	0.000	7.732	0	88150	N.D.	0.453 #
37) L8 AR-1262-2	9.498	8.261	1415938	10715	2.436	0.014 #
38) L8 AR-1262-3	0.000	8.560	0	953196	N.D.	3.042 #
39) L8 AR-1262-4	0.000	8.686	0	85226	N.D.	0.141 #
40) L8 AR-1262-5	0.000	9.123	0	111604	N.D.	0.374 #
41) L9 AR-1268-1	0.000	8.560	0	953196	N.D.	1.010 #
42) L9 AR-1268-2	0.000	8.686	0	85226	N.D.	0.094 #
43) L9 AR-1268-3	0.000	8.843	0	961325	N.D.	1.299 #
44) L9 AR-1268-4	0.000	9.123	0	111604	N.D.	0.332 #
45) L9 AR-1268-5	0.000	9.407	0	12926	N.D.	0.005 #

Data Path : Z:\pestpcbsrv\HPCHEM1\ECD_Q\Data\PQ110119\
Data File : PQ044684.D
Signal(s) : Signal #1: ECD1A.ch Signal #2: ECD2B.ch
Acq On : 01 Nov 2019 16:21
Operator : HP\AJ
Sample : HEXANE
Misc :
ALS Vial : 1 Sample Multiplier: 1

Instrument :
ECD_Q
ClientSampleId :
HEXANE

Integration File signal 1: autoint1.e
Integration File signal 2: autoint2.e
Quant Time: Nov 02 05:33:21 2019
Quant Method : Z:\pestpcbsrv\HPCHEM1\ECD_Q\Method\PQ110119CLP.M
Quant Title : GC EXTRACTABLES
QLast Update : Sat Nov 02 05:31:51 2019
Response via : Initial Calibration
Integrator: ChemStation

Volume Inj. : 1 µl
Signal #1 Phase : ZB MR1 Signal #2 Phase: ZB MR2
Signal #1 Info : 30Mx0.32mmx 0.5µm Signal #2 Info : 30M x 0.32mm x 0.25µm

Compound	RT#1	RT#2	Resp#1	Resp#2	ng/ml	ng/ml
----------	------	------	--------	--------	-------	-------

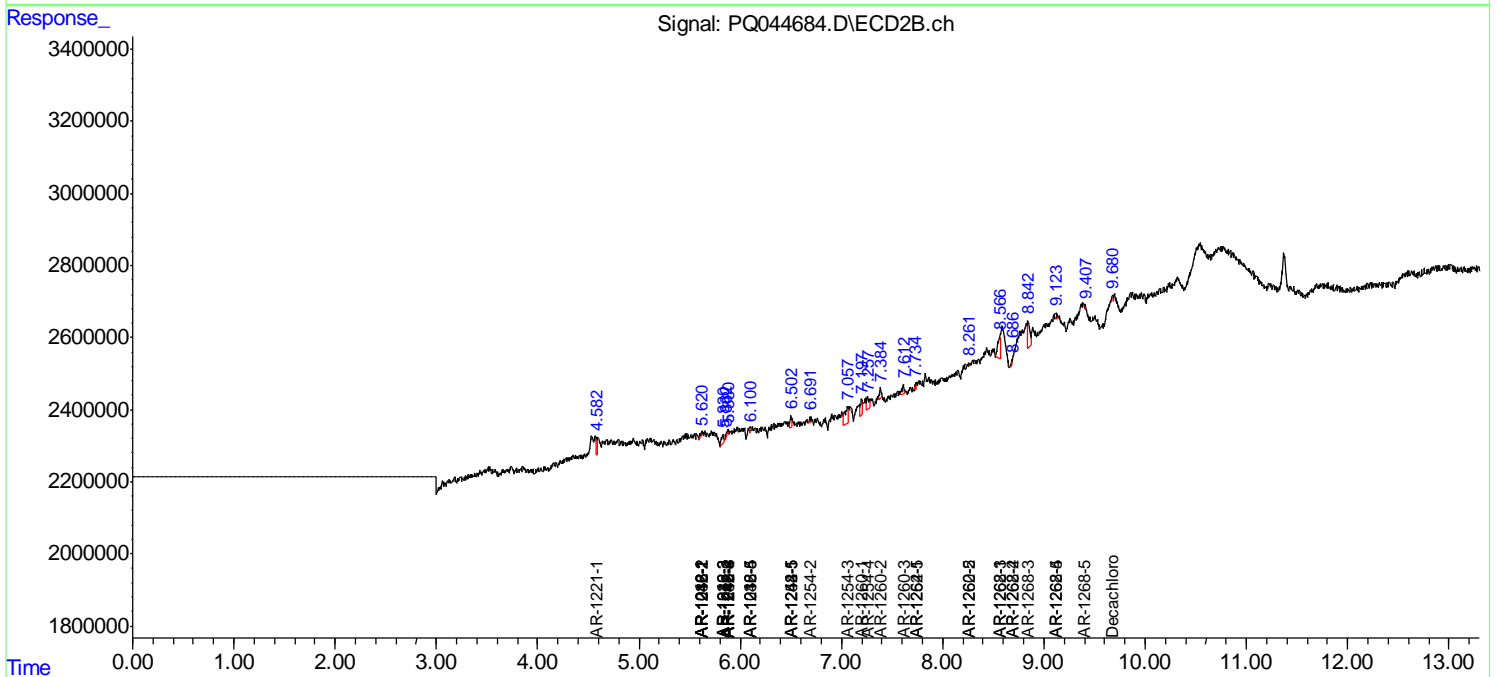
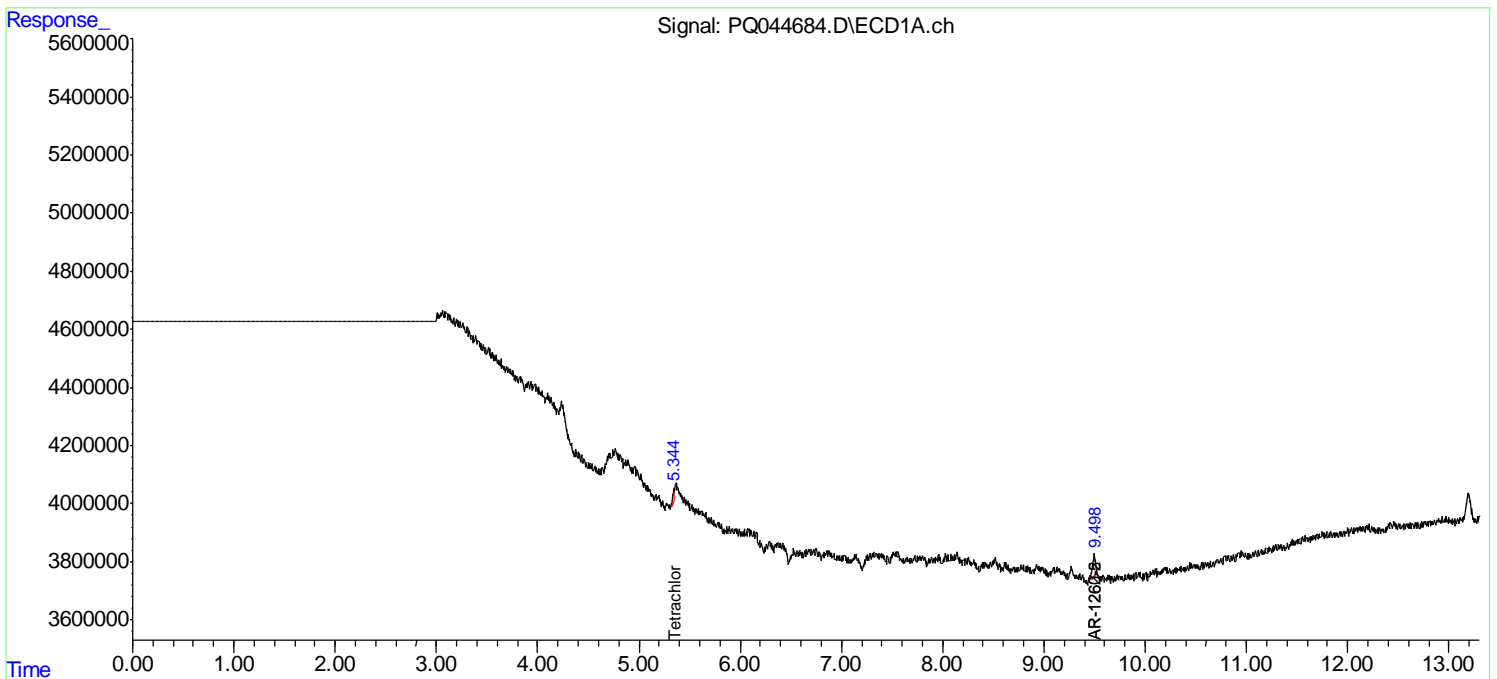
(f)=RT Delta > 1/2 Window (#)=Amounts differ by > 25% (m)=manual int.

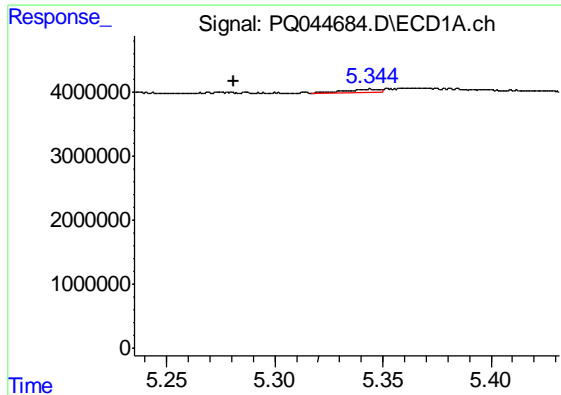
Data Path : Z:\pestpcbsrv\HPCHEM1\ECD_Q\Data\PQ110119\
 Data File : PQ044684.D
 Signal(s) : Signal #1: ECD1A.ch Signal #2: ECD2B.ch
 Acq On : 01 Nov 2019 16:21
 Operator : HP\AJ
 Sample : HEXANE
 Misc :
 ALS Vial : 1 Sample Multiplier: 1

Instrument :
 ECD_Q
 Client Sampled :
 HEXANE

Integration File signal 1: autoint1.e
 Integration File signal 2: autoint2.e
 Quant Time: Nov 02 05:33:21 2019
 Quant Method : Z:\pestpcbsrv\HPCHEM1\ECD_Q\Method\PQ110119CLP.M
 Quant Title : GC EXTRACTABLES
 QLast Update : Sat Nov 02 05:31:51 2019
 Response via : Initial Calibration
 Integrator: ChemStation

Volume Inj. : 1 µl
 Signal #1 Phase : ZB MR1 Signal #2 Phase: ZB MR2
 Signal #1 Info : 30Mx0.32mmx 0.5µm Signal #2 Info : 30M x 0.32mm x 0.25µm

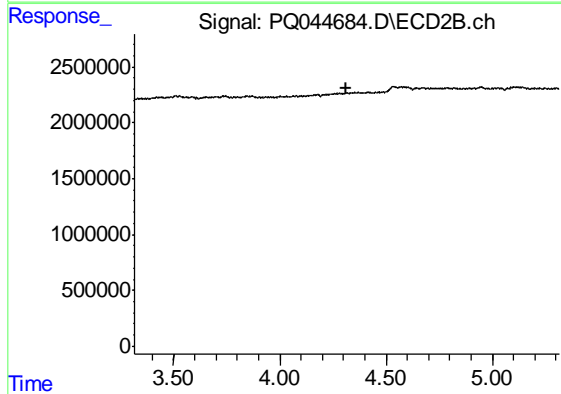




#1 Tetrachloro-m-xylene

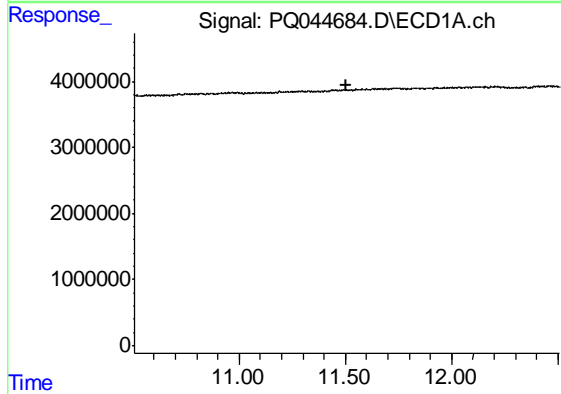
R.T.: 5.344 min
 Delta R.T.: 0.063 min
 Response: 498097
 Conc: 0.08 ng/ml

Instrument :
 ECD_Q
 ClientSampleId :
 HEXANE



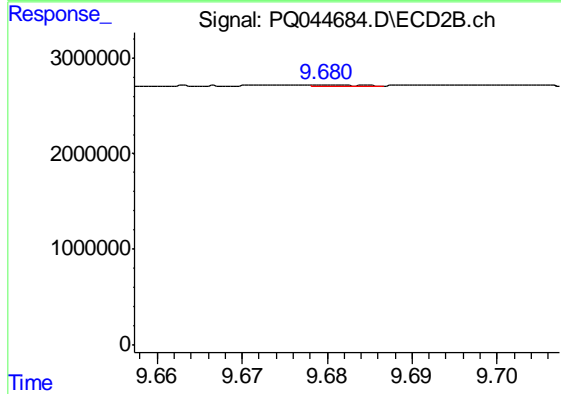
#1 Tetrachloro-m-xylene

R.T.: 0.000 min
 Exp R.T. : 4.316 min
 Response: 0
 Conc: N.D.



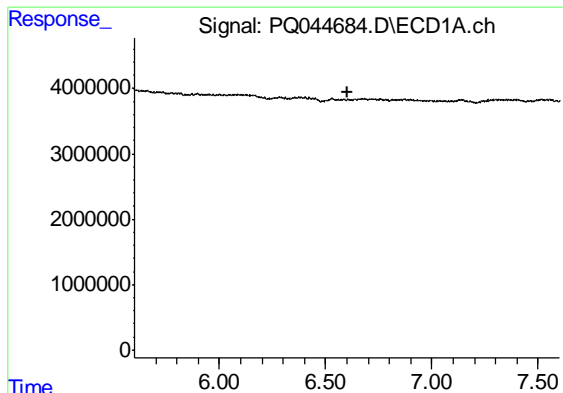
#2 Decachlorobiphenyl

R.T.: 0.000 min
 Exp R.T. : 11.507 min
 Response: 0
 Conc: N.D.



#2 Decachlorobiphenyl

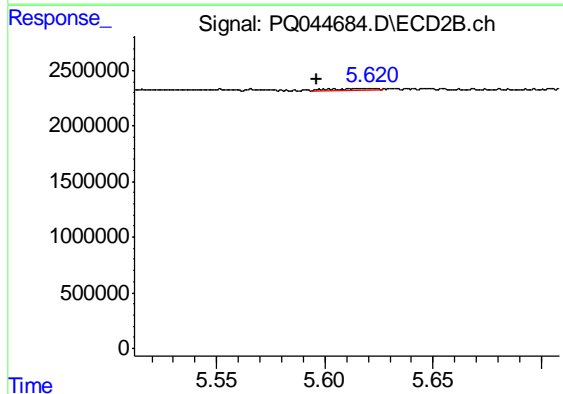
R.T.: 9.681 min
 Delta R.T.: -0.054 min
 Response: 53480
 Conc: 0.01 ng/ml



#3 AR-1016-1

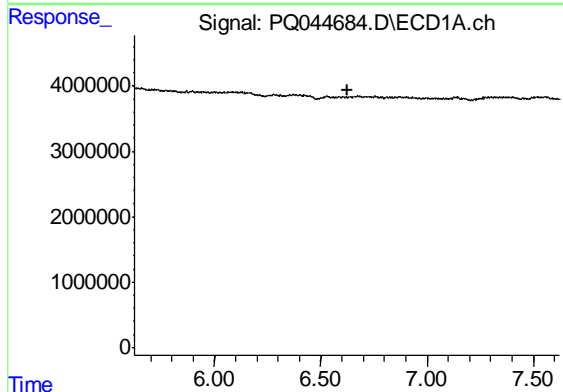
R.T.: 0.000 min
 Exp R.T. : 6.600 min
 Response: 0
 Conc: N.D.

Instrument :
 ECD_Q
 ClientSampleId :
 HEXANE



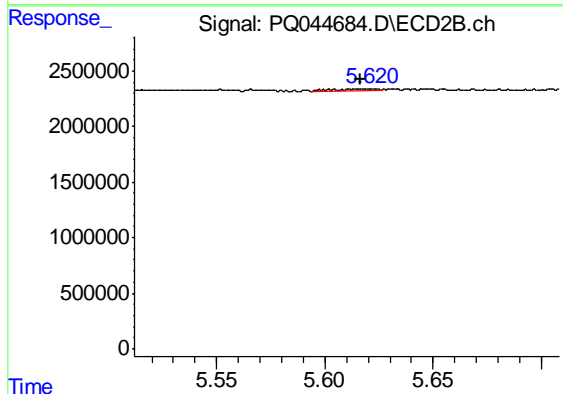
#3 AR-1016-1

R.T.: 5.620 min
 Delta R.T.: 0.024 min
 Response: 149050
 Conc: 1.22 ng/ml



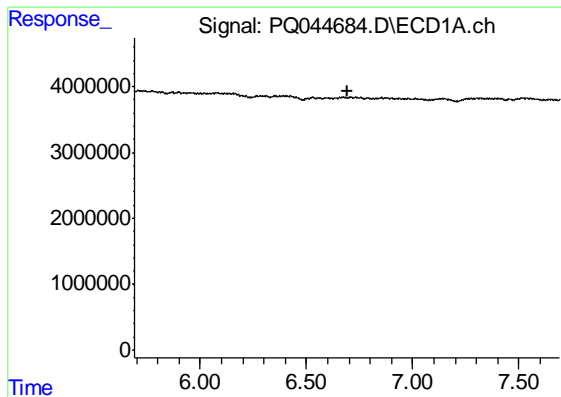
#4 AR-1016-2

R.T.: 0.000 min
 Exp R.T. : 6.624 min
 Response: 0
 Conc: N.D.



#4 AR-1016-2

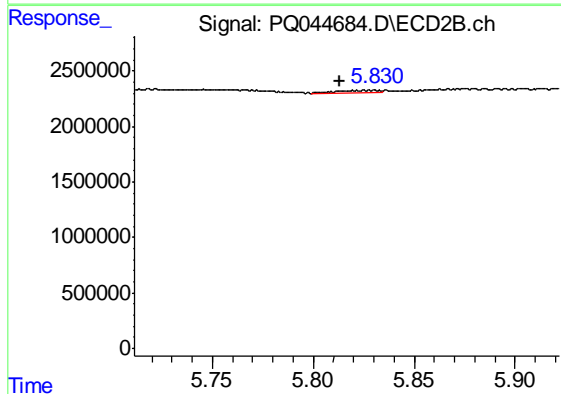
R.T.: 5.620 min
 Delta R.T.: 0.004 min
 Response: 149050
 Conc: 0.82 ng/ml



#5 AR-1016-3

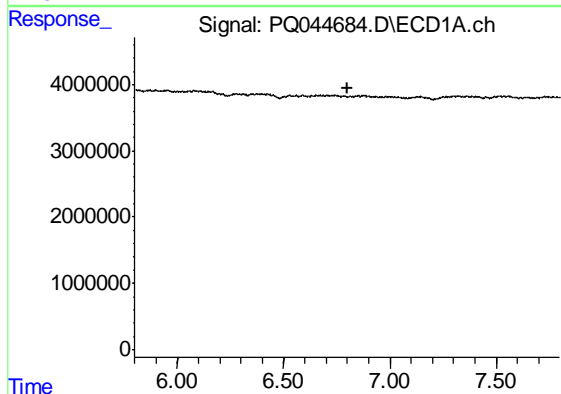
R.T.: 0.000 min
 Exp R.T. : 6.691 min
 Response: 0
 Conc: N.D.

Instrument :
 ECD_Q
 ClientSampleId :
 HEXANE



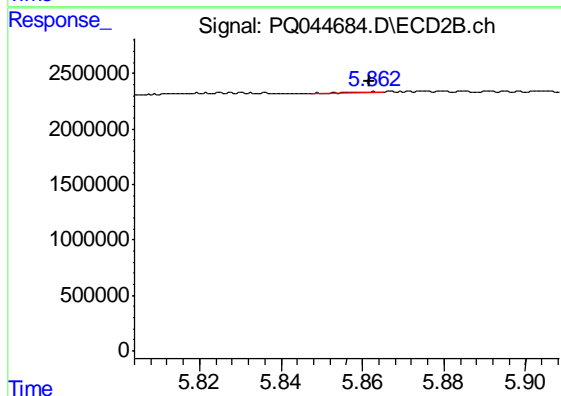
#5 AR-1016-3

R.T.: 5.830 min
 Delta R.T.: 0.017 min
 Response: 297014
 Conc: 3.19 ng/ml



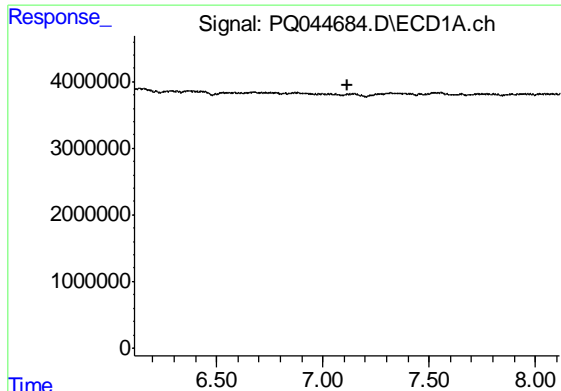
#6 AR-1016-4

R.T.: 0.000 min
 Exp R.T. : 6.798 min
 Response: 0
 Conc: N.D.



#6 AR-1016-4

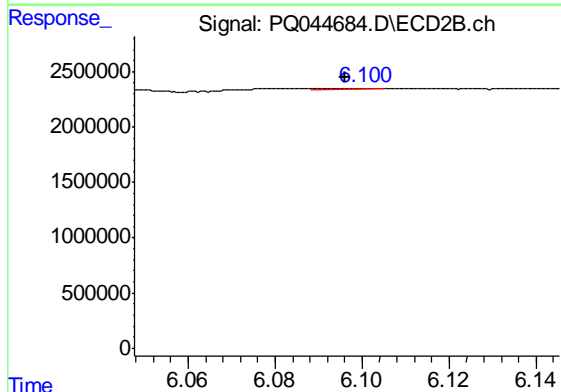
R.T.: 5.863 min
 Delta R.T.: 0.001 min
 Response: 83757
 Conc: 1.02 ng/ml



#7 AR-1016-5

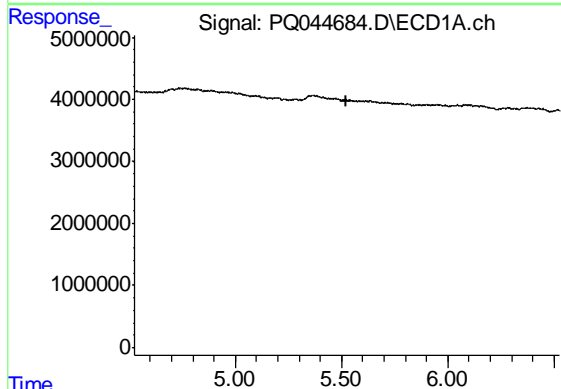
R.T.: 0.000 min
Exp R.T. : 7.114 min
Response: 0
Conc: N.D.

Instrument :
ECD_Q
ClientSampleId :
HEXANE



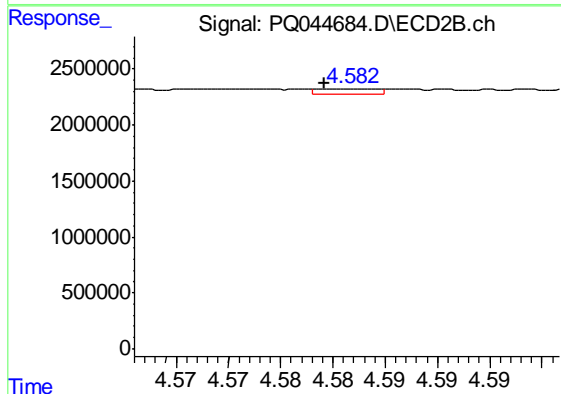
#7 AR-1016-5

R.T.: 6.100 min
Delta R.T.: 0.004 min
Response: 76203
Conc: 0.71 ng/ml



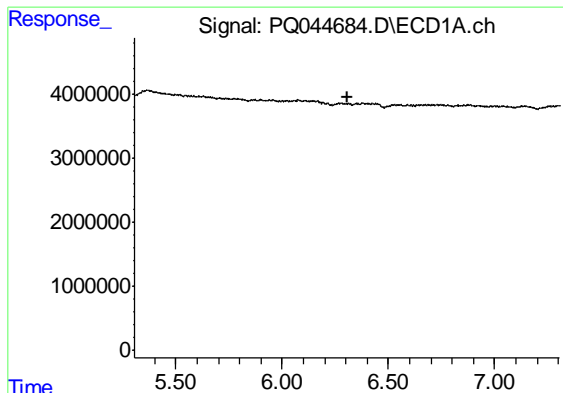
#8 AR-1221-1

R.T.: 0.000 min
Exp R.T. : 5.525 min
Response: 0
Conc: N.D.



#8 AR-1221-1

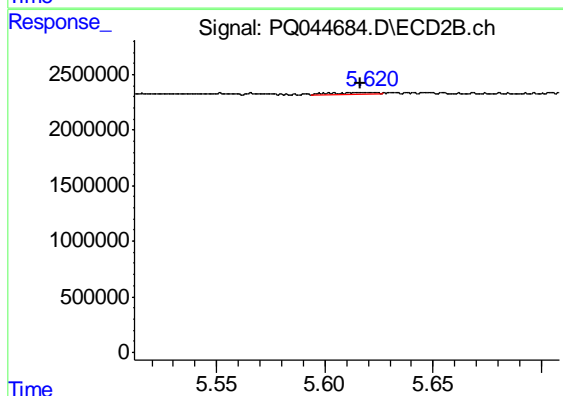
R.T.: 4.582 min
Delta R.T.: 0.003 min
Response: 198840
Conc: 5.47 ng/ml



#12 AR-1232-2

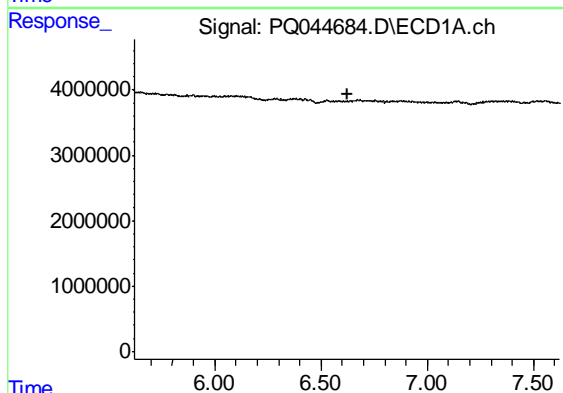
R.T.: 0.000 min
 Exp R.T. : 6.305 min
 Response: 0
 Conc: N.D.

Instrument :
 ECD_Q
 ClientSampleId :
 HEXANE



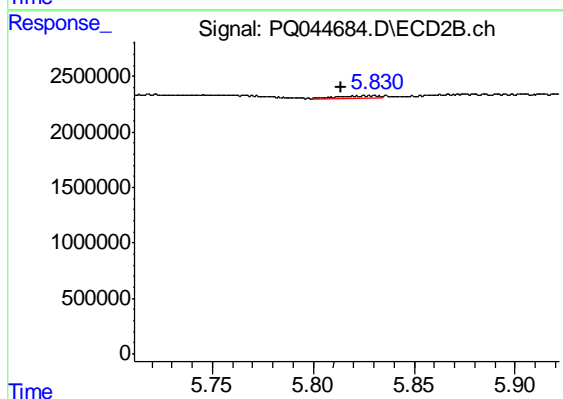
#12 AR-1232-2

R.T.: 5.620 min
 Delta R.T.: 0.004 min
 Response: 149050
 Conc: 1.89 ng/ml



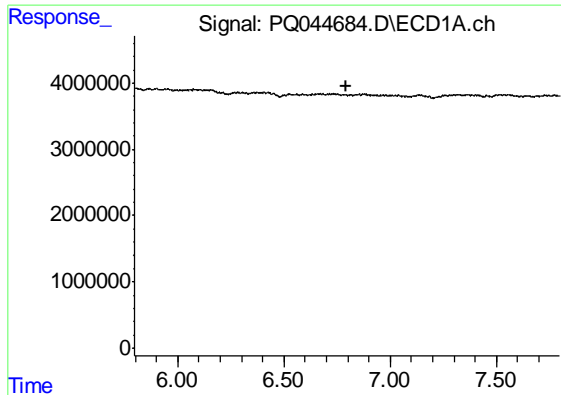
#13 AR-1232-3

R.T.: 0.000 min
 Exp R.T. : 6.622 min
 Response: 0
 Conc: N.D.



#13 AR-1232-3

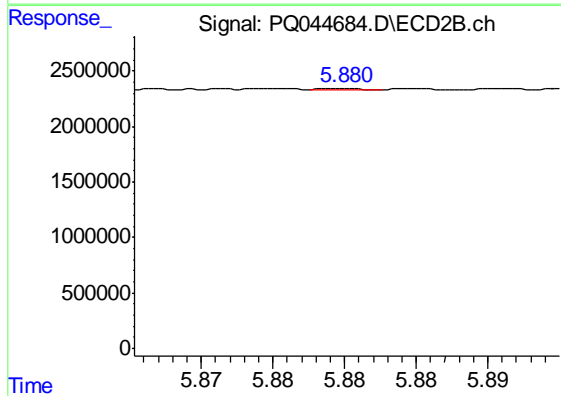
R.T.: 5.830 min
 Delta R.T.: 0.017 min
 Response: 297014
 Conc: 7.50 ng/ml



#14 AR-1232-4

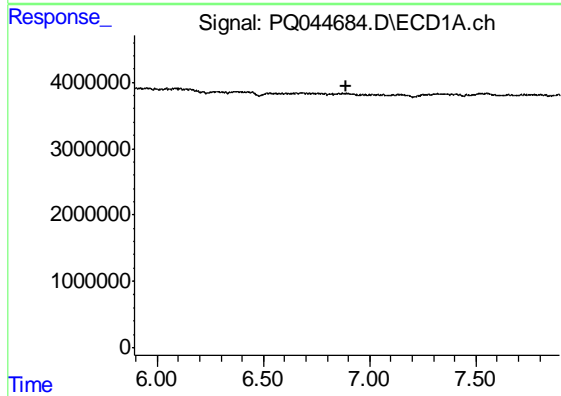
R.T.: 0.000 min
 Exp R.T. : 6.796 min
 Response: 0
 Conc: N.D.

Instrument :
 ECD_Q
 ClientSampleId :
 HEXANE



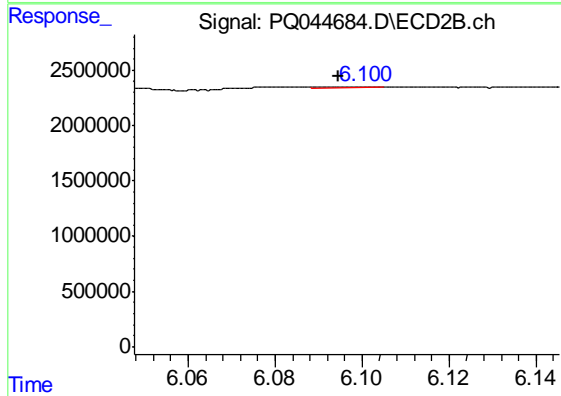
#14 AR-1232-4

R.T.: 5.880 min
 Delta R.T.: -0.027 min
 Response: 19839
 Conc: 0.51 ng/ml



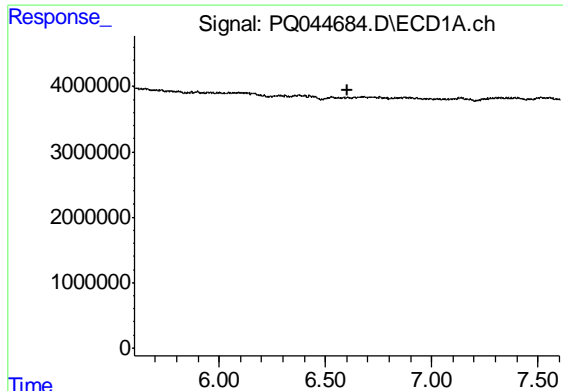
#15 AR-1232-5

R.T.: 0.000 min
 Exp R.T. : 6.893 min
 Response: 0
 Conc: N.D.



#15 AR-1232-5

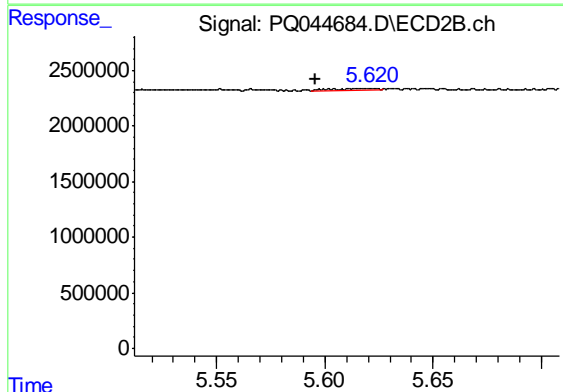
R.T.: 6.100 min
 Delta R.T.: 0.006 min
 Response: 76203
 Conc: 1.78 ng/ml



#16 AR-1242-1

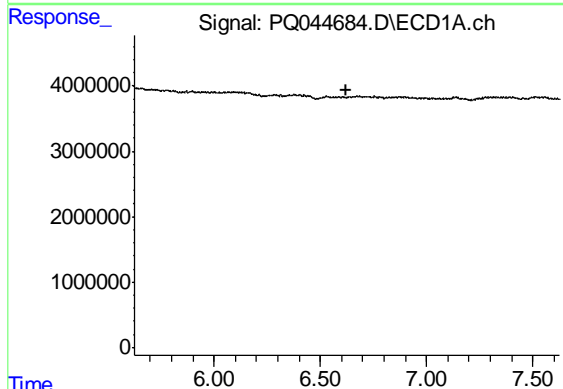
R.T.: 0.000 min
 Exp R.T. : 6.602 min
 Response: 0
 Conc: N.D.

Instrument :
 ECD_Q
 ClientSampleId :
 HEXANE



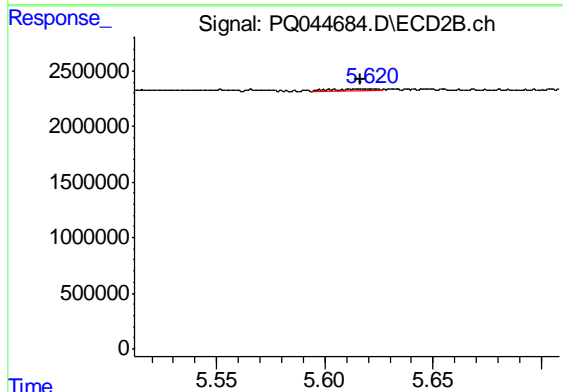
#16 AR-1242-1

R.T.: 5.620 min
 Delta R.T.: 0.024 min
 Response: 149050
 Conc: 1.46 ng/ml



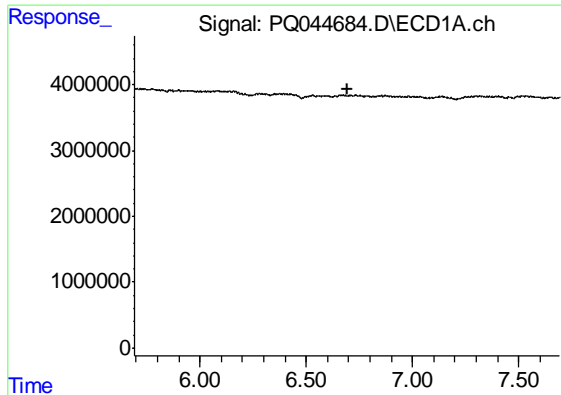
#17 AR-1242-2

R.T.: 0.000 min
 Exp R.T. : 6.625 min
 Response: 0
 Conc: N.D.



#17 AR-1242-2

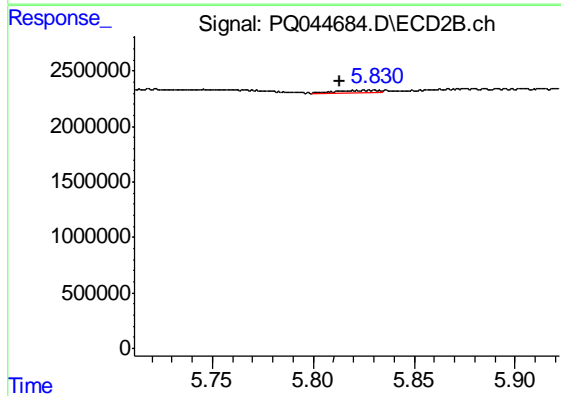
R.T.: 5.620 min
 Delta R.T.: 0.004 min
 Response: 149050
 Conc: 1.01 ng/ml



#18 AR-1242-3

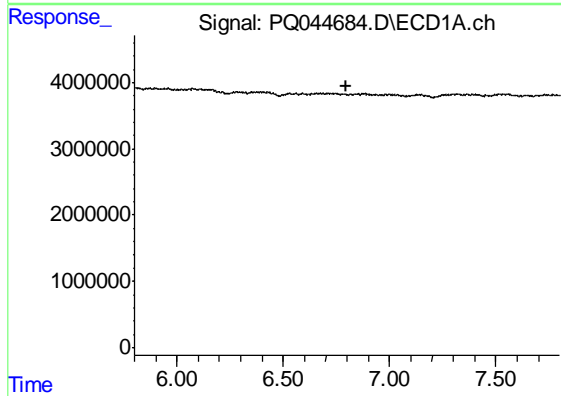
R.T.: 0.000 min
 Exp R.T. : 6.692 min
 Response: 0
 Conc: N.D.

Instrument :
 ECD_Q
 ClientSampleId :
 HEXANE



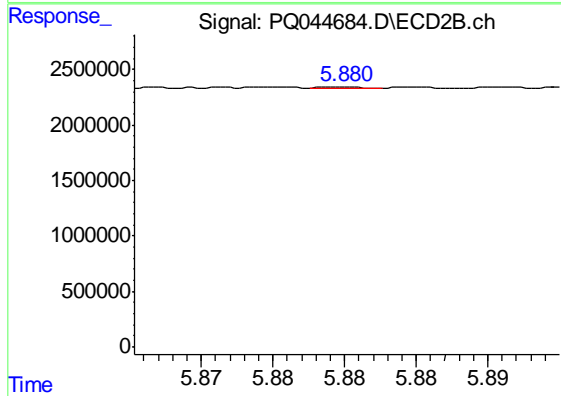
#18 AR-1242-3

R.T.: 5.830 min
 Delta R.T.: 0.017 min
 Response: 297014
 Conc: 3.85 ng/ml



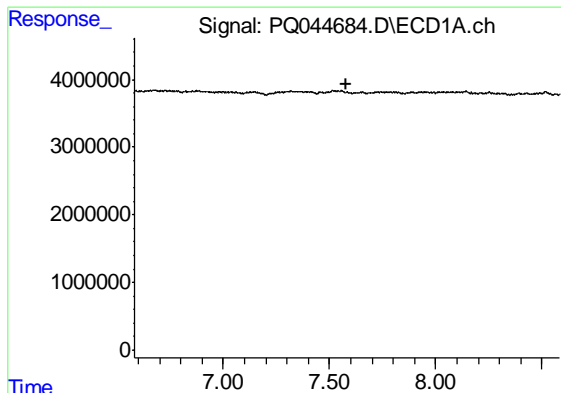
#19 AR-1242-4

R.T.: 0.000 min
 Exp R.T. : 6.799 min
 Response: 0
 Conc: N.D.



#19 AR-1242-4

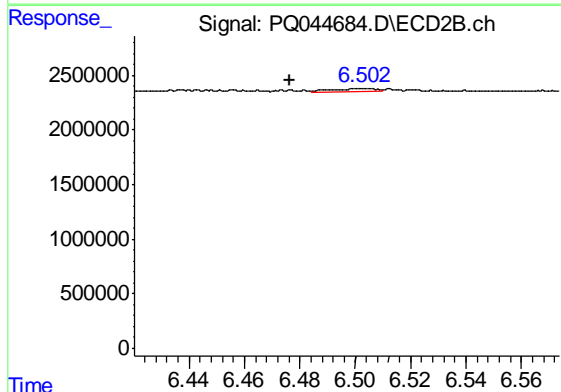
R.T.: 5.880 min
 Delta R.T.: -0.026 min
 Response: 19839
 Conc: 0.24 ng/ml



#20 AR-1242-5

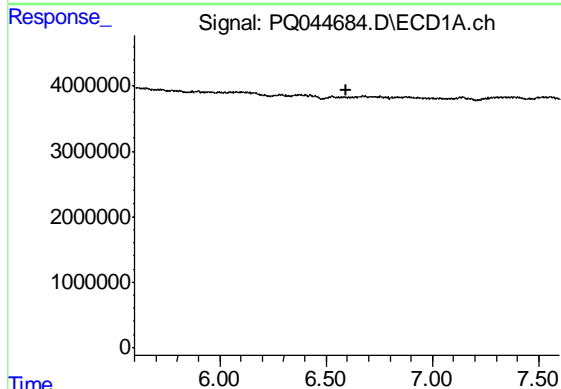
R.T.: 0.000 min
 Exp R.T. : 7.582 min
 Response: 0
 Conc: N.D.

Instrument :
 ECD_Q
 ClientSampleId :
 HEXANE



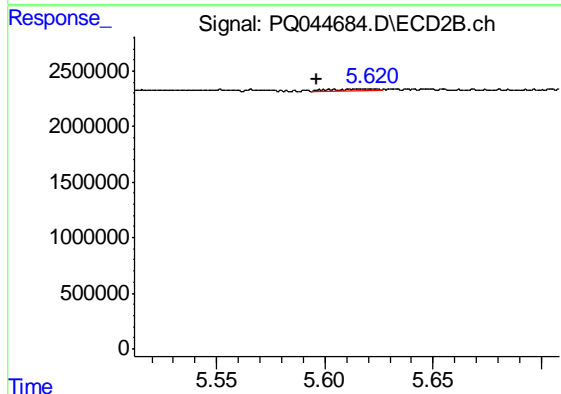
#20 AR-1242-5

R.T.: 6.503 min
 Delta R.T.: 0.026 min
 Response: 306389
 Conc: 2.77 ng/ml



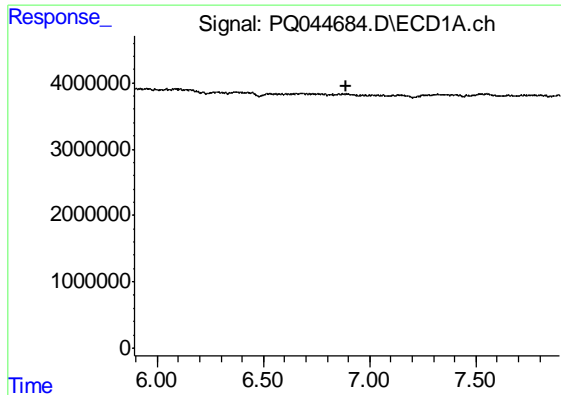
#21 AR-1248-1

R.T.: 0.000 min
 Exp R.T. : 6.598 min
 Response: 0
 Conc: N.D.



#21 AR-1248-1

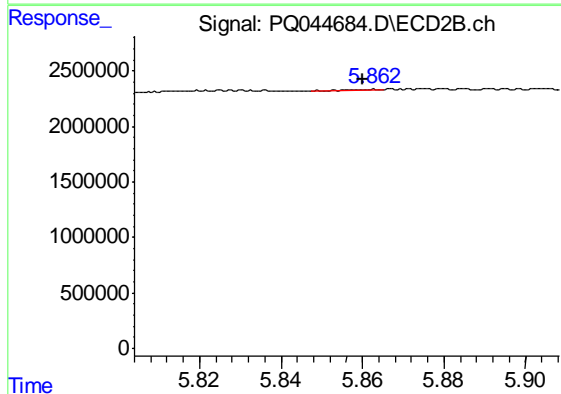
R.T.: 5.620 min
 Delta R.T.: 0.024 min
 Response: 149050
 Conc: 1.89 ng/ml



#22 AR-1248-2

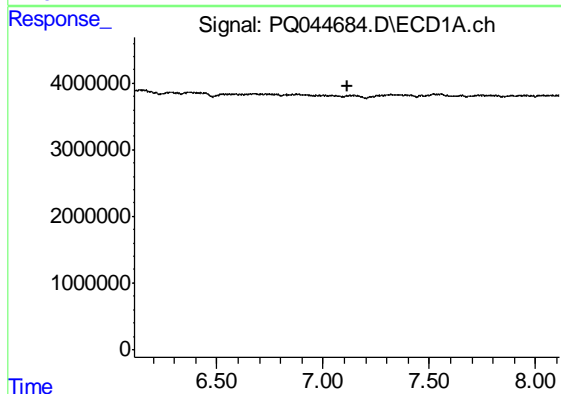
R.T.: 0.000 min
 Exp R.T. : 6.893 min
 Response: 0
 Conc: N.D.

Instrument :
 ECD_Q
 ClientSampleId :
 HEXANE



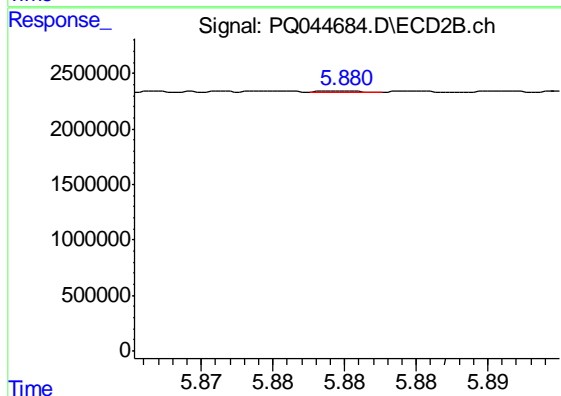
#22 AR-1248-2

R.T.: 5.863 min
 Delta R.T.: 0.003 min
 Response: 83757
 Conc: 0.71 ng/ml



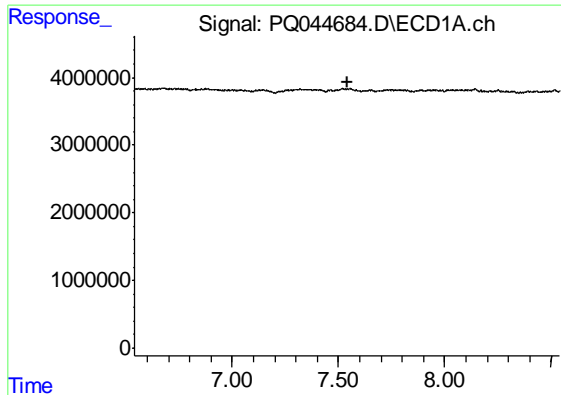
#23 AR-1248-3

R.T.: 0.000 min
 Exp R.T. : 7.112 min
 Response: 0
 Conc: N.D.



#23 AR-1248-3

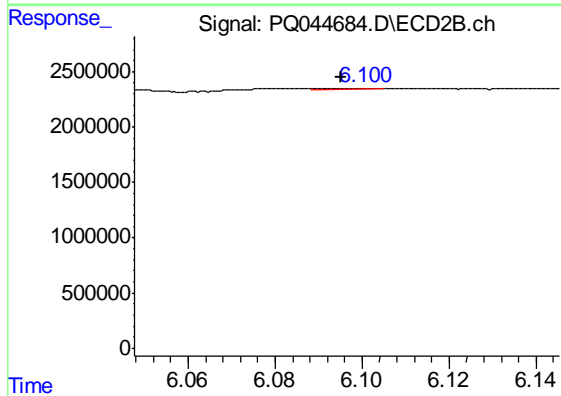
R.T.: 5.880 min
 Delta R.T.: -0.026 min
 Response: 19839
 Conc: 0.16 ng/ml



#24 AR-1248-4

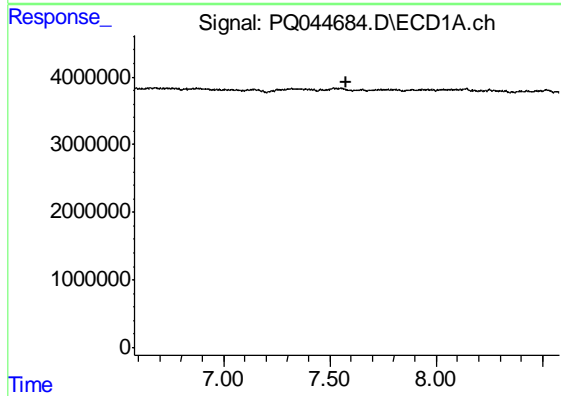
R.T.: 0.000 min
 Exp R.T. : 7.540 min
 Response: 0
 Conc: N.D.

Instrument :
 ECD_Q
 ClientSampleId :
 HEXANE



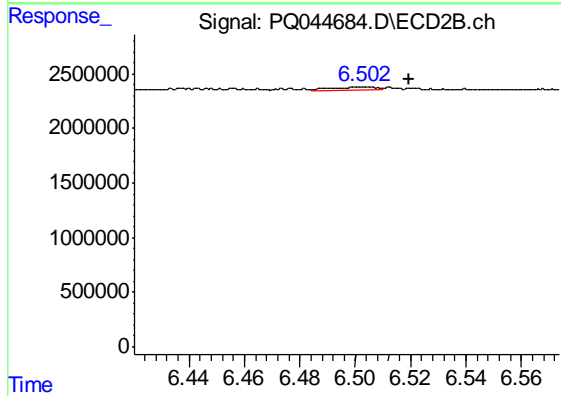
#24 AR-1248-4

R.T.: 6.100 min
 Delta R.T.: 0.005 min
 Response: 76203
 Conc: 0.52 ng/ml



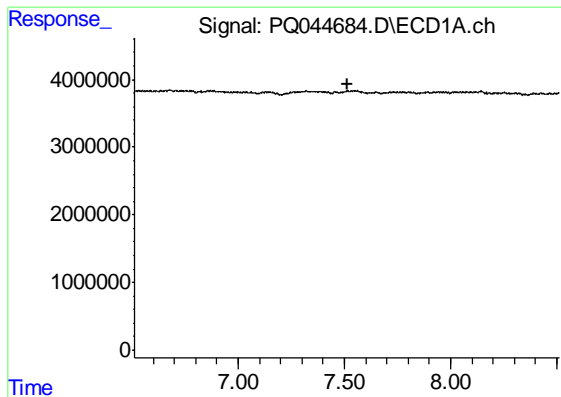
#25 AR-1248-5

R.T.: 0.000 min
 Exp R.T. : 7.580 min
 Response: 0
 Conc: N.D.



#25 AR-1248-5

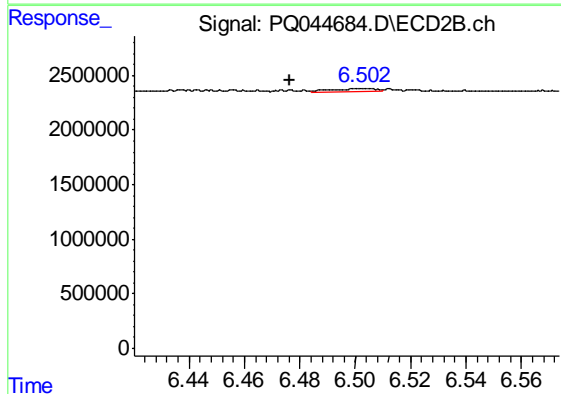
R.T.: 6.503 min
 Delta R.T.: -0.017 min
 Response: 306389
 Conc: 2.05 ng/ml



#26 AR-1254-1

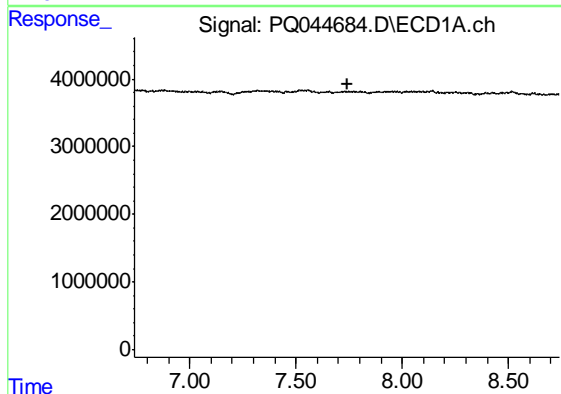
R.T.: 0.000 min
 Exp R.T. : 7.512 min
 Response: 0
 Conc: N.D.

Instrument :
 ECD_Q
 ClientSampleId :
 HEXANE



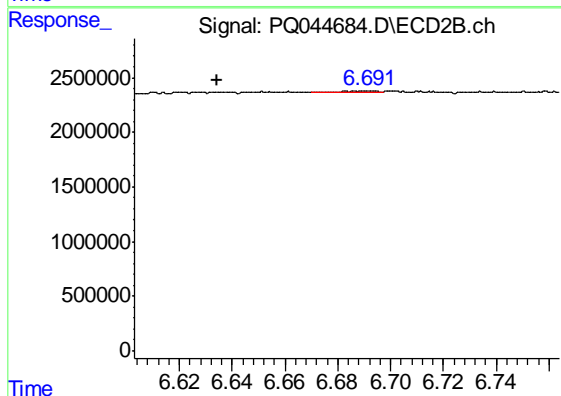
#26 AR-1254-1

R.T.: 6.503 min
 Delta R.T.: 0.027 min
 Response: 306389
 Conc: 1.24 ng/ml



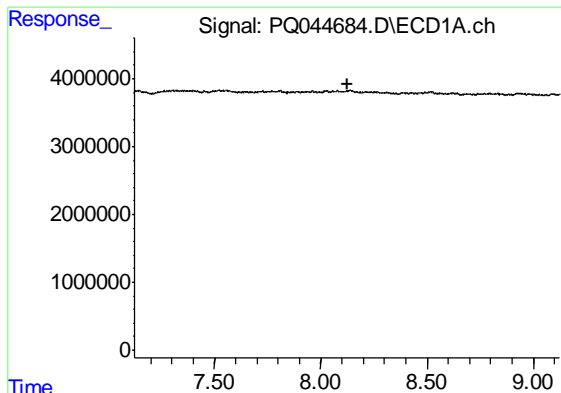
#27 AR-1254-2

R.T.: 0.000 min
 Exp R.T. : 7.740 min
 Response: 0
 Conc: N.D.



#27 AR-1254-2

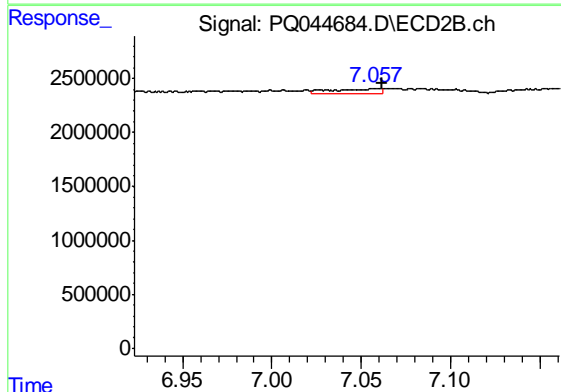
R.T.: 6.691 min
 Delta R.T.: 0.057 min
 Response: 95055
 Conc: 0.43 ng/ml



#28 AR-1254-3

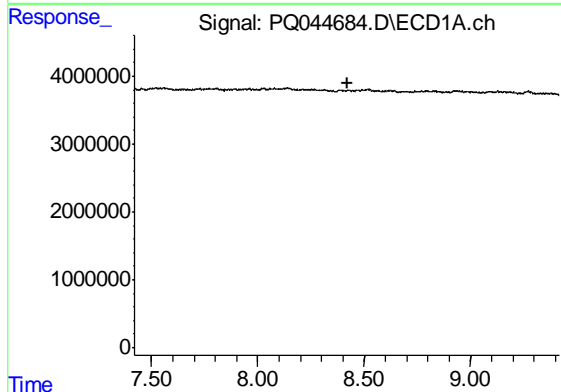
R.T.: 0.000 min
 Exp R.T. : 8.124 min
 Response: 0
 Conc: N.D.

Instrument :
 ECD_Q
 ClientSampleId :
 HEXANE



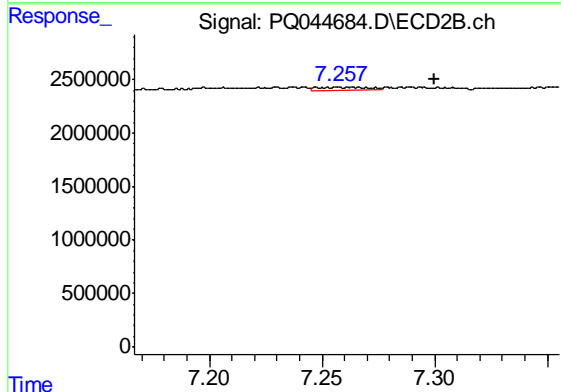
#28 AR-1254-3

R.T.: 7.057 min
 Delta R.T.: -0.004 min
 Response: 868753
 Conc: 2.28 ng/ml



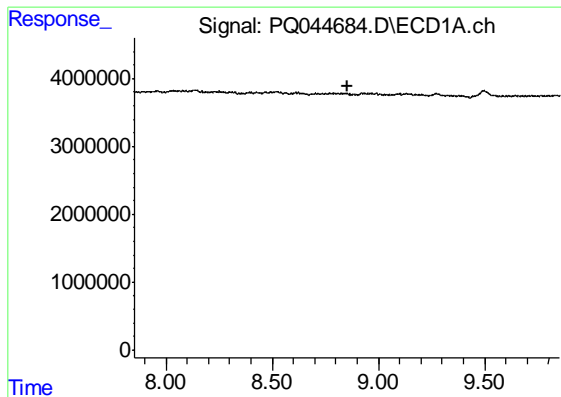
#29 AR-1254-4

R.T.: 0.000 min
 Exp R.T. : 8.419 min
 Response: 0
 Conc: N.D.



#29 AR-1254-4

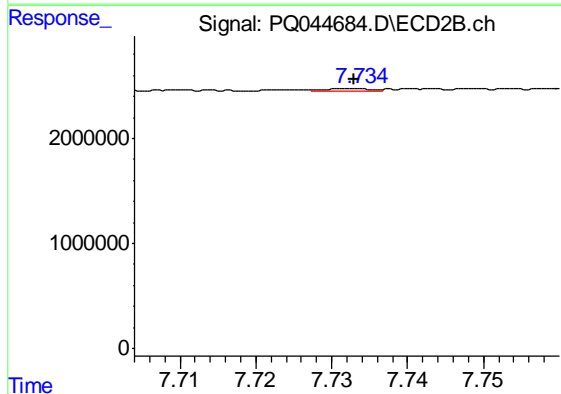
R.T.: 7.257 min
 Delta R.T.: -0.042 min
 Response: 470254
 Conc: 1.91 ng/ml



#30 AR-1254-5

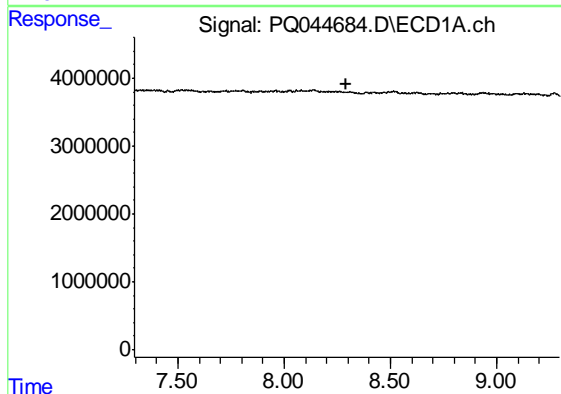
R.T.: 0.000 min
 Exp R.T. : 8.852 min
 Response: 0
 Conc: N.D.

Instrument :
 ECD_Q
 ClientSampleId :
 HEXANE



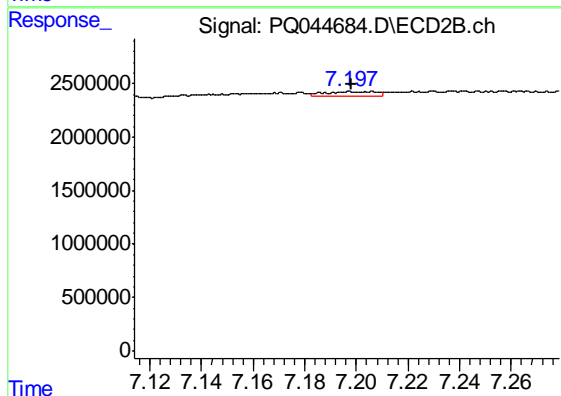
#30 AR-1254-5

R.T.: 7.732 min
 Delta R.T.: 0.000 min
 Response: 88150
 Conc: 0.24 ng/ml



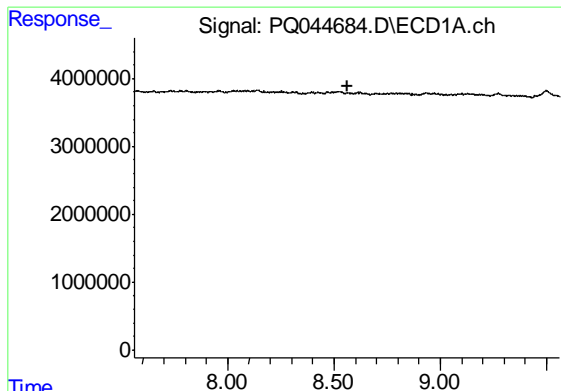
#31 AR-1260-1

R.T.: 0.000 min
 Exp R.T. : 8.296 min
 Response: 0
 Conc: N.D.



#31 AR-1260-1

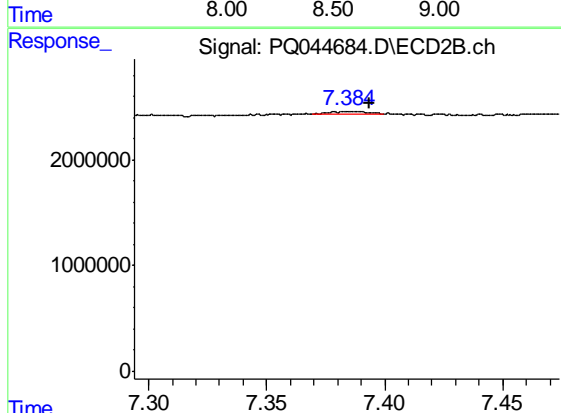
R.T.: 7.197 min
 Delta R.T.: 0.000 min
 Response: 552761
 Conc: 2.49 ng/ml



#32 AR-1260-2

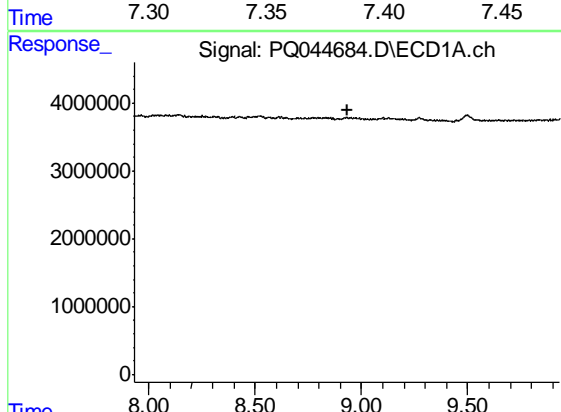
R.T.: 0.000 min
 Exp R.T. : 8.561 min
 Response: 0
 Conc: N.D.

Instrument :
 ECD_Q
 ClientSampleId :
 HEXANE



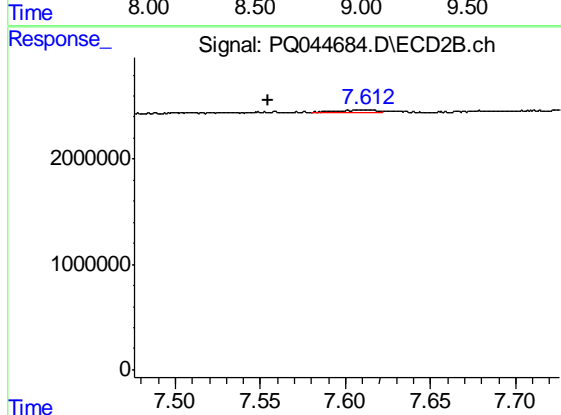
#32 AR-1260-2

R.T.: 7.385 min
 Delta R.T.: -0.009 min
 Response: 309300
 Conc: 1.10 ng/ml



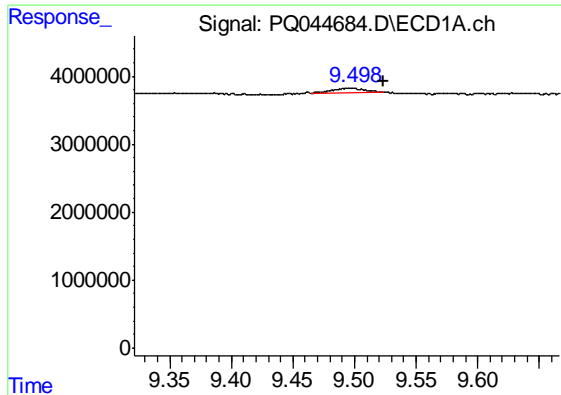
#33 AR-1260-3

R.T.: 0.000 min
 Exp R.T. : 8.932 min
 Response: 0
 Conc: N.D.



#33 AR-1260-3

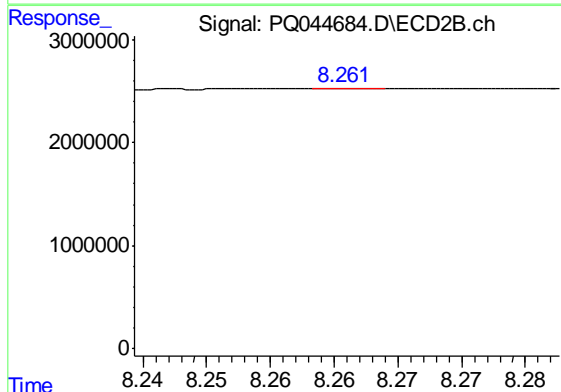
R.T.: 7.612 min
 Delta R.T.: 0.058 min
 Response: 349973
 Conc: 1.37 ng/ml



#35 AR-1260-5

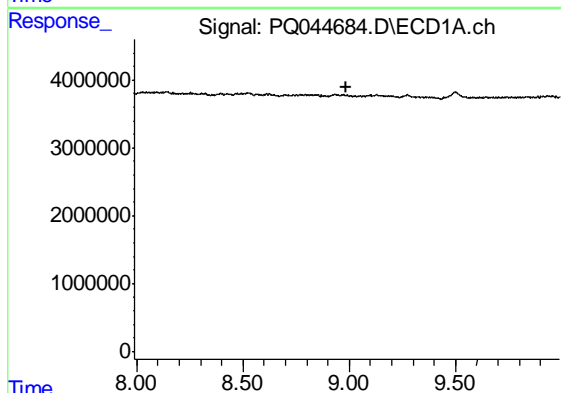
R.T.: 9.498 min
 Delta R.T.: -0.026 min
 Response: 1415938
 Conc: 3.12 ng/ml

Instrument :
 ECD_Q
 ClientSampleId :
 HEXANE



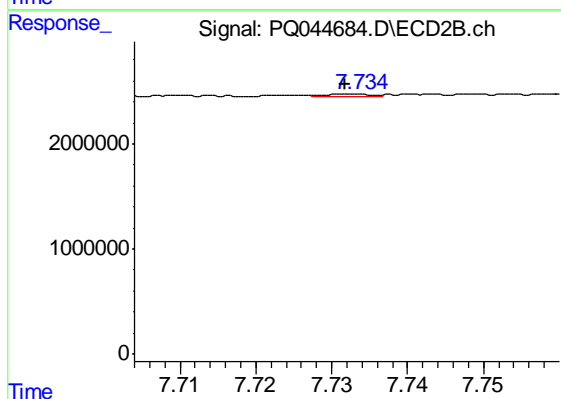
#35 AR-1260-5

R.T.: 8.261 min
 Delta R.T.: -0.024 min
 Response: 10715
 Conc: 0.02 ng/ml



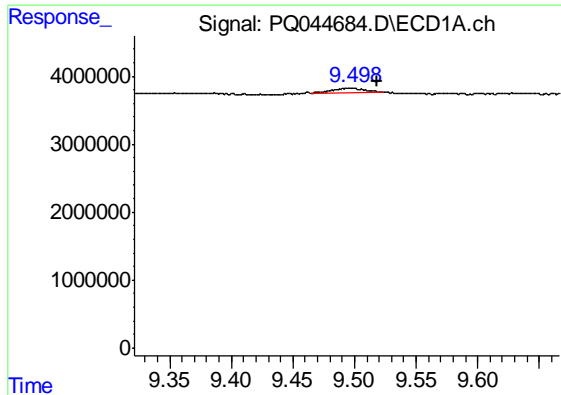
#36 AR-1262-1

R.T.: 0.000 min
 Exp R.T. : 8.989 min
 Response: 0
 Conc: N.D.



#36 AR-1262-1

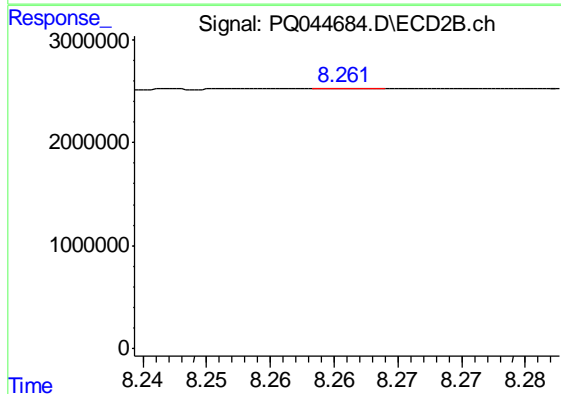
R.T.: 7.732 min
 Delta R.T.: 0.000 min
 Response: 88150
 Conc: 0.45 ng/ml



#37 AR-1262-2

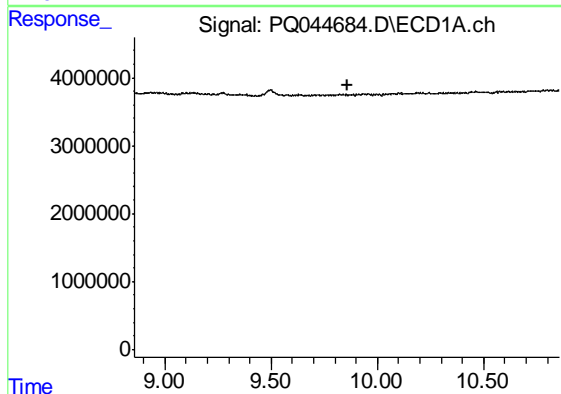
R.T.: 9.498 min
 Delta R.T.: -0.020 min
 Response: 1415938
 Conc: 2.44 ng/ml

Instrument :
 ECD_Q
 ClientSampleId :
 HEXANE



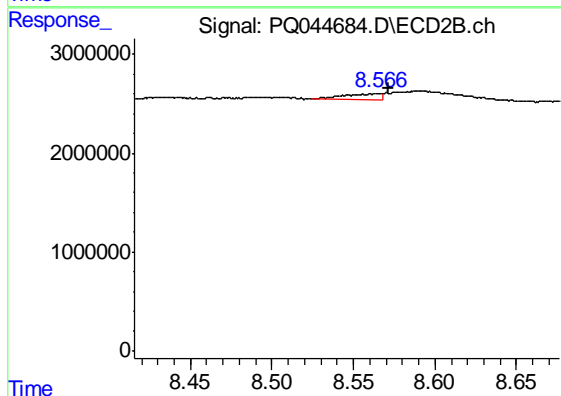
#37 AR-1262-2

R.T.: 8.261 min
 Delta R.T.: -0.022 min
 Response: 10715
 Conc: 0.01 ng/ml



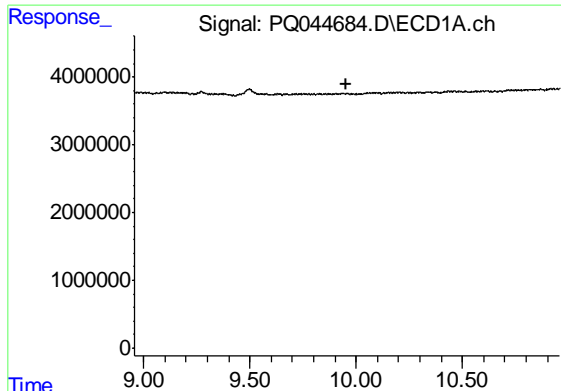
#38 AR-1262-3

R.T.: 0.000 min
 Exp R.T. : 9.857 min
 Response: 0
 Conc: N.D.



#38 AR-1262-3

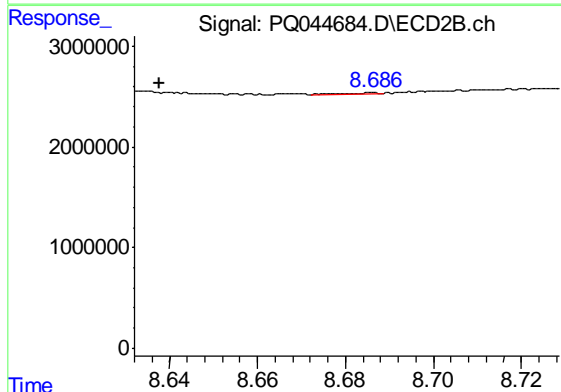
R.T.: 8.560 min
 Delta R.T.: -0.012 min
 Response: 953196
 Conc: 3.04 ng/ml



#39 AR-1262-4

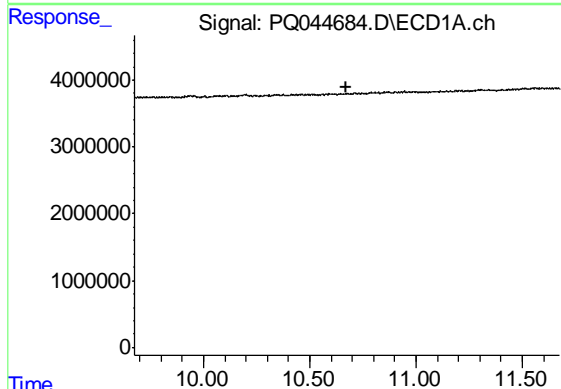
R.T.: 0.000 min
 Exp R.T. : 9.957 min
 Response: 0
 Conc: N.D.

Instrument :
 ECD_Q
 ClientSampleId :
 HEXANE



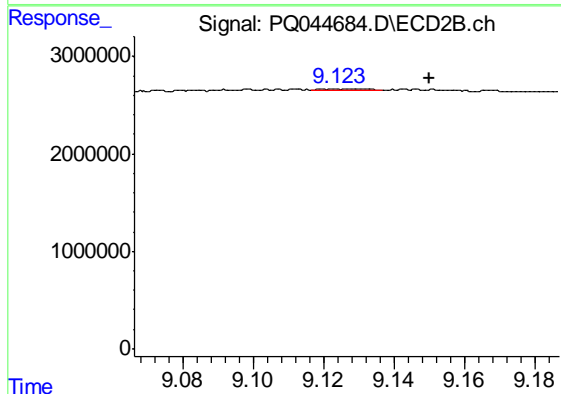
#39 AR-1262-4

R.T.: 8.686 min
 Delta R.T.: 0.048 min
 Response: 85226
 Conc: 0.14 ng/ml



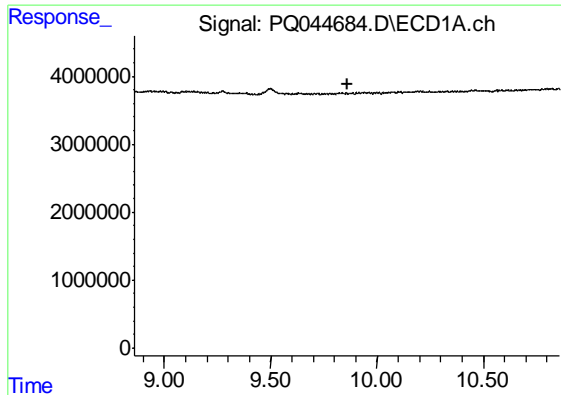
#40 AR-1262-5

R.T.: 0.000 min
 Exp R.T. : 10.675 min
 Response: 0
 Conc: N.D.



#40 AR-1262-5

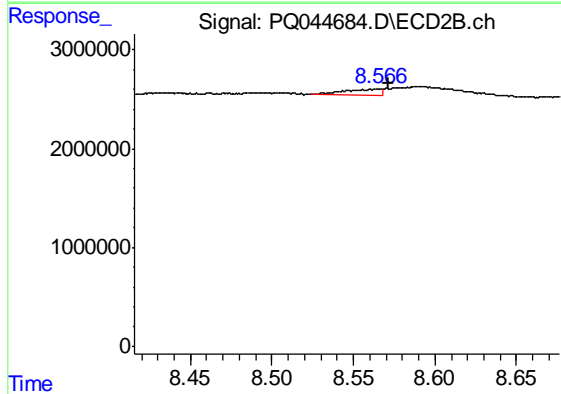
R.T.: 9.123 min
 Delta R.T.: -0.027 min
 Response: 111604
 Conc: 0.37 ng/ml



#41 AR-1268-1

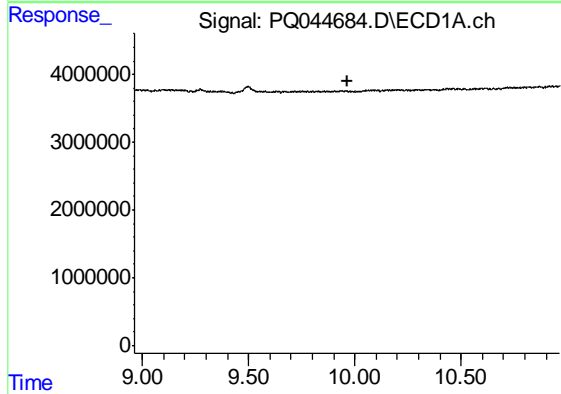
R.T.: 0.000 min
 Exp R.T. : 9.859 min
 Response: 0
 Conc: N.D.

Instrument :
 ECD_Q
 ClientSampleId :
 HEXANE



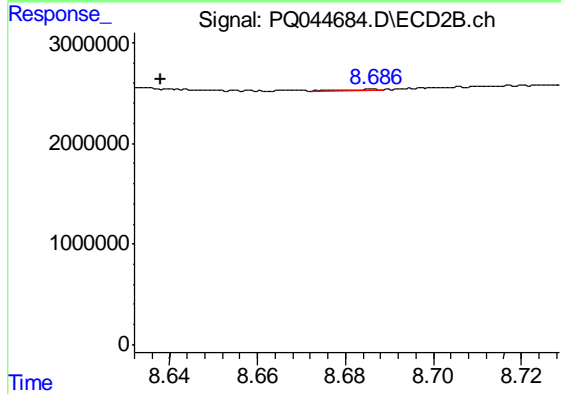
#41 AR-1268-1

R.T.: 8.560 min
 Delta R.T.: -0.011 min
 Response: 953196
 Conc: 1.01 ng/ml



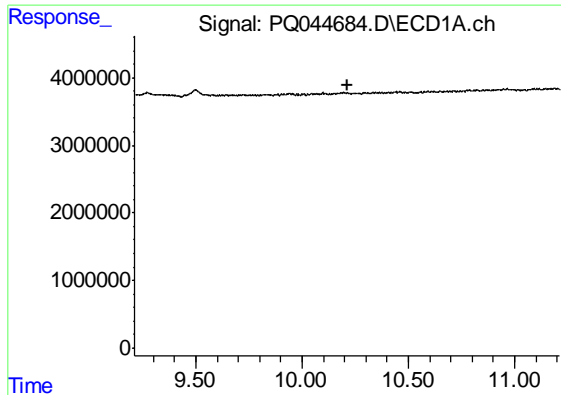
#42 AR-1268-2

R.T.: 0.000 min
 Exp R.T. : 9.963 min
 Response: 0
 Conc: N.D.



#42 AR-1268-2

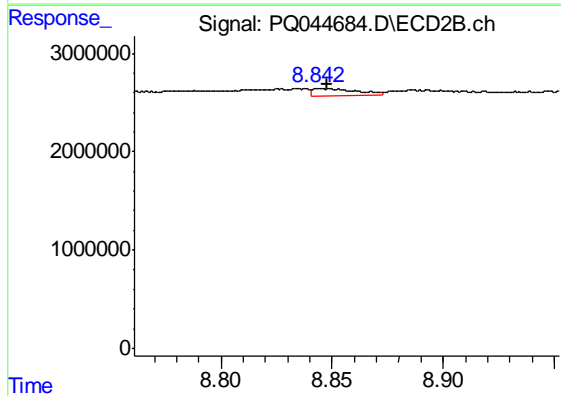
R.T.: 8.686 min
 Delta R.T.: 0.048 min
 Response: 85226
 Conc: 0.09 ng/ml



#43 AR-1268-3

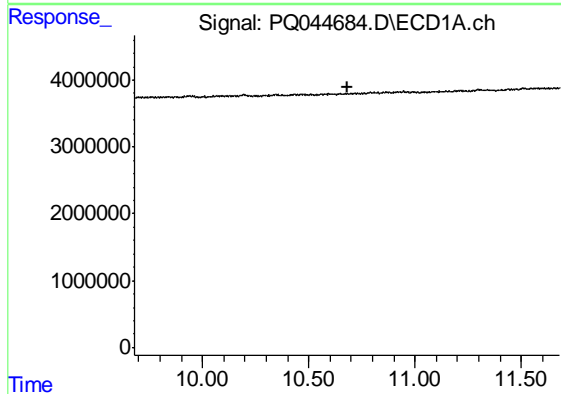
R.T.: 0.000 min
 Exp R.T. : 10.211 min
 Response: 0
 Conc: N.D.

Instrument :
 ECD_Q
 ClientSampleId :
 HEXANE



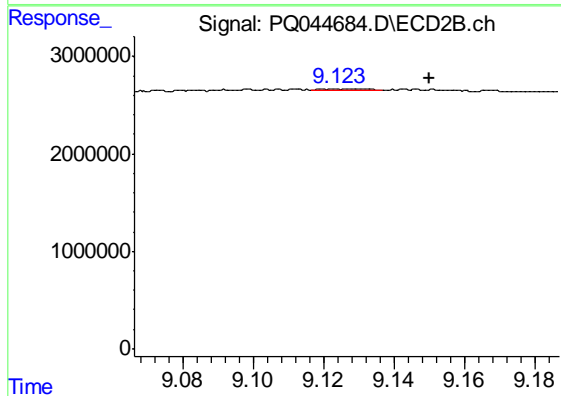
#43 AR-1268-3

R.T.: 8.843 min
 Delta R.T.: -0.005 min
 Response: 961325
 Conc: 1.30 ng/ml



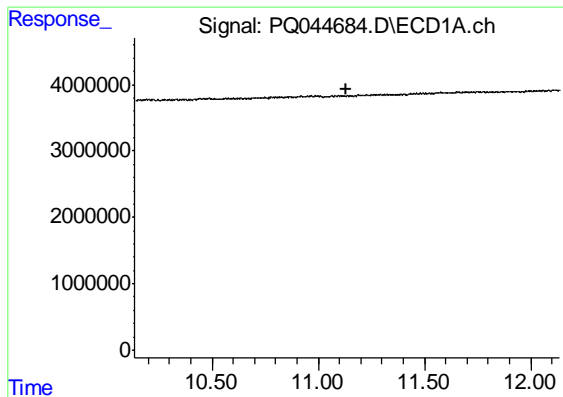
#44 AR-1268-4

R.T.: 0.000 min
 Exp R.T. : 10.680 min
 Response: 0
 Conc: N.D.



#44 AR-1268-4

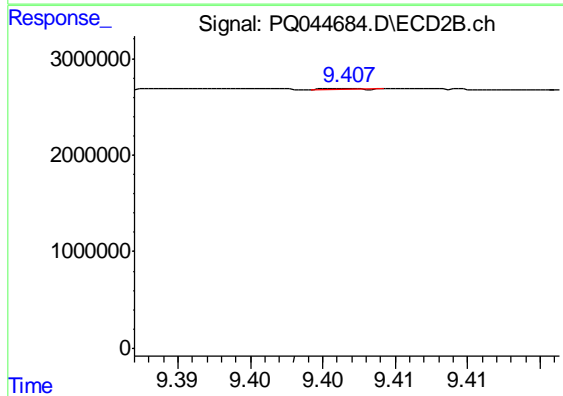
R.T.: 9.123 min
 Delta R.T.: -0.027 min
 Response: 111604
 Conc: 0.33 ng/ml



#45 AR-1268-5

R.T.: 0.000 min
Exp R.T. : 11.135 min
Response: 0
Conc: N.D.

Instrument :
ECD_Q
ClientSampleId :
HEXANE



#45 AR-1268-5

R.T.: 9.407 min
Delta R.T.: -0.053 min
Response: 12926
Conc: 0.00 ng/ml