

Data Path : Z:\pestpcbsrv\HPCHEM1\ECD\_Q\Data\PQ110119\  
 Data File : PQ044690.D  
 Signal(s) : Signal #1: ECD1A.ch Signal #2: ECD2B.ch  
 Acq On : 01 Nov 2019 17:59  
 Operator : HP\AJ  
 Sample : AR1660ICC1600  
 Misc :  
 ALS Vial : 7 Sample Multiplier: 1

Instrument :  
 ECD\_Q  
 ClientSampleId :  
 AR1660501

Integration File signal 1: autoint1.e  
 Integration File signal 2: autoint2.e  
 Quant Time: Nov 02 01:46:56 2019  
 Quant Method : Z:\pestpcbsrv\HPCHEM1\ECD\_Q\Method\PQ110119CLP.M  
 Quant Title : GC EXTRACTABLES  
 QLast Update : Sat Nov 02 01:44:24 2019  
 Response via : Initial Calibration  
 Integrator: ChemStation

Volume Inj. : 1 µl  
 Signal #1 Phase : ZB MR1 Signal #2 Phase: ZB MR2  
 Signal #1 Info : 30Mx0.32mmx 0.5µm Signal #2 Info : 30M x 0.32mm x 0.25µm

Compound	RT#1	RT#2	Resp#1	Resp#2	ng/ml	ng/ml
-----						
System Monitoring Compounds						
1) SA Tetrachlo...	5.282	4.317	436.8E6	219.2E6	76.071	79.442
2) SA Decachlor...	11.504	9.732	740.1E6	897.1E6	140.409	147.689
Target Compounds						
3) L1 AR-1016-1	6.599	5.597	259.6E6	173.0E6	1427.361	1473.304
4) L1 AR-1016-2	6.623	5.617	392.4E6	266.6E6	1427.566	1542.206
5) L1 AR-1016-3	6.691	5.814	244.2E6	135.8E6	1389.749	1502.124
6) L1 AR-1016-4	6.798	5.861	199.5E6	113.2E6	1433.409	1423.800
7) L1 AR-1016-5	7.113	6.096	188.1E6	149.0E6	1401.857	1450.504
31) L7 AR-1260-1	8.294	7.197	317.0E6	312.1E6	1433.169	1466.762
32) L7 AR-1260-2	8.559	7.393	368.3E6	404.1E6	1431.108	1492.611
33) L7 AR-1260-3	8.930	7.553	282.7E6	377.3E6	1397.304	1526.033
34) L7 AR-1260-4	9.174	8.038	321.0E6	350.9E6	1439.828	1520.304
35) L7 AR-1260-5	9.521	8.285	643.4E6	947.2E6	1473.109	1565.969
-----						

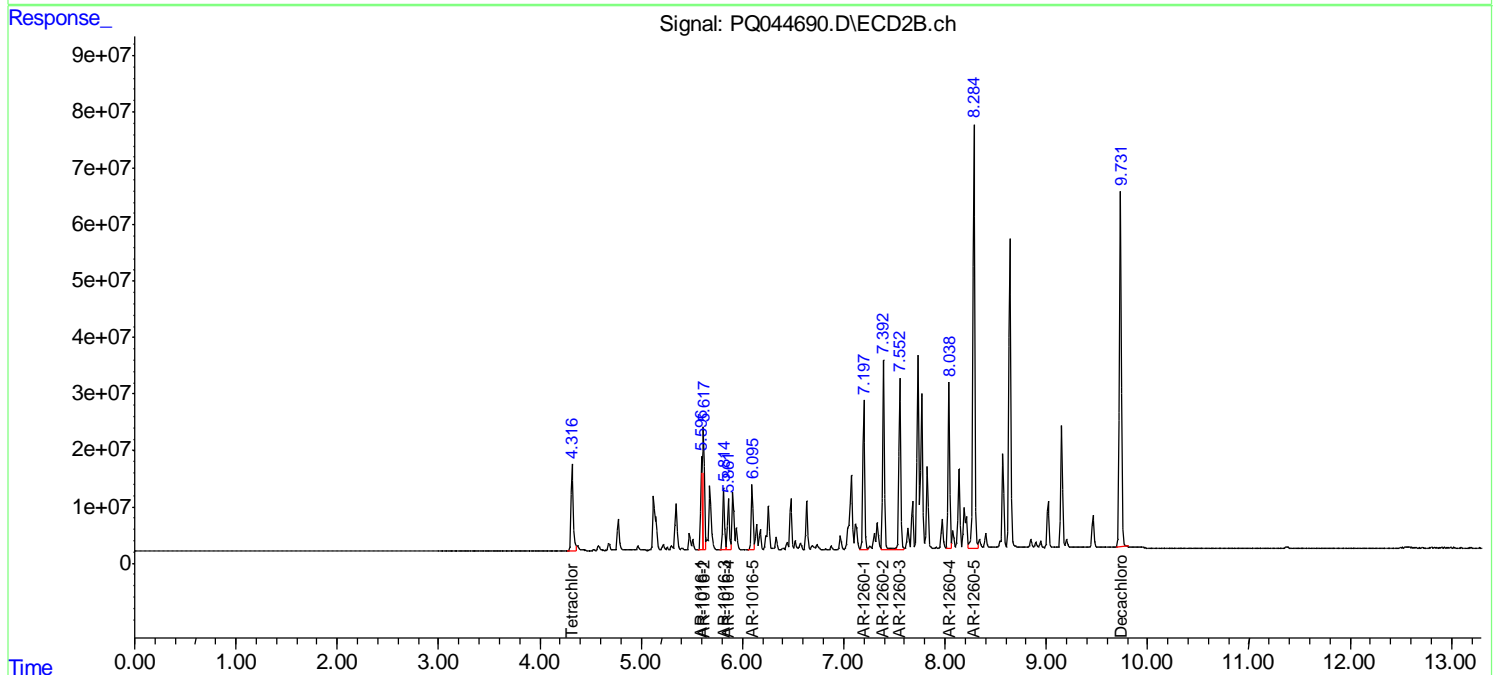
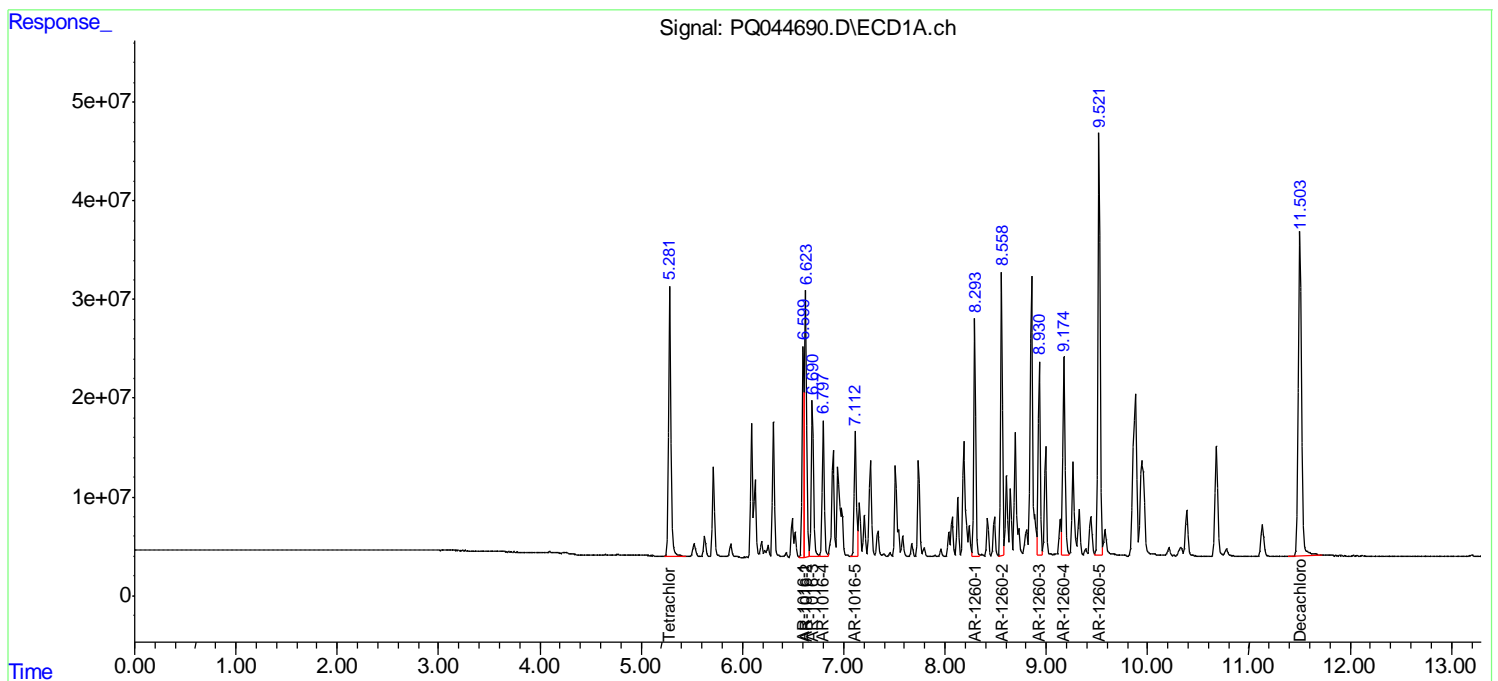
(f)=RT Delta > 1/2 Window (#)=Amounts differ by > 25% (m)=manual int.

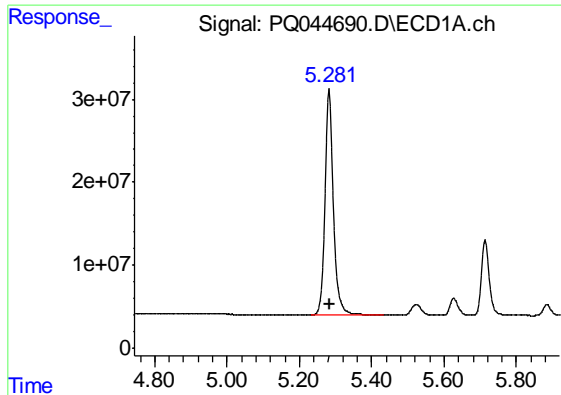
Data Path : Z:\pestpcbsrv\HPCHEM1\ECD\_Q\Data\PQ110119\  
 Data File : PQ044690.D  
 Signal(s) : Signal #1: ECD1A.ch Signal #2: ECD2B.ch  
 Acq On : 01 Nov 2019 17:59  
 Operator : HP\AJ  
 Sample : AR1660ICC1600  
 Misc :  
 ALS Vial : 7 Sample Multiplier: 1

Instrument :  
 ECD\_Q  
 ClientSampled :  
 AR1660501

Integration File signal 1: autoint1.e  
 Integration File signal 2: autoint2.e  
 Quant Time: Nov 02 01:46:56 2019  
 Quant Method : Z:\pestpcbsrv\HPCHEM1\ECD\_Q\Method\PQ110119CLP.M  
 Quant Title : GC EXTRACTABLES  
 QLast Update : Sat Nov 02 01:44:24 2019  
 Response via : Initial Calibration  
 Integrator: ChemStation

Volume Inj. : 1 µl  
 Signal #1 Phase : ZB MR1 Signal #2 Phase: ZB MR2  
 Signal #1 Info : 30Mx0.32mmx 0.5µm Signal #2 Info : 30M x 0.32mm x 0.25µm

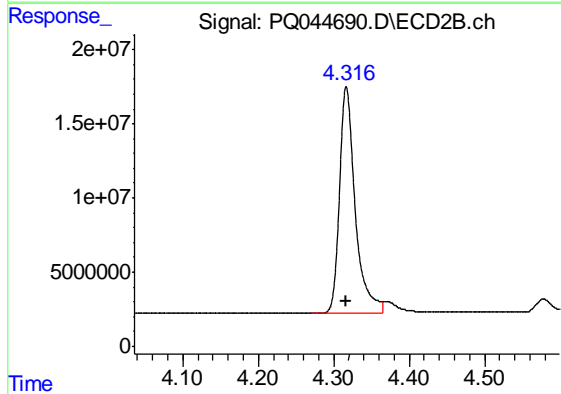




#1 Tetrachloro-m-xylene

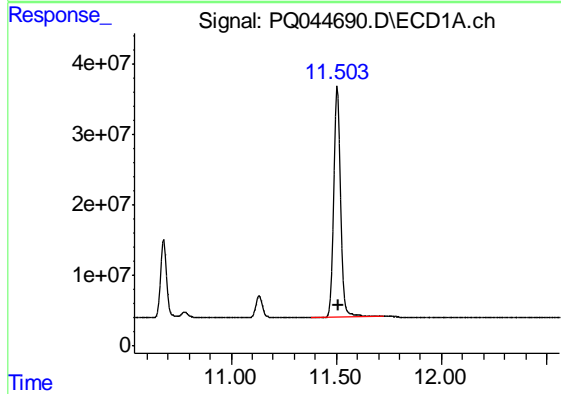
R.T.: 5.282 min  
 Delta R.T.: 0.000 min  
 Response: 436807653  
 Conc: 76.07 ng/ml

Instrument :  
 ECD\_Q  
 ClientSampleId :  
 AR1660501



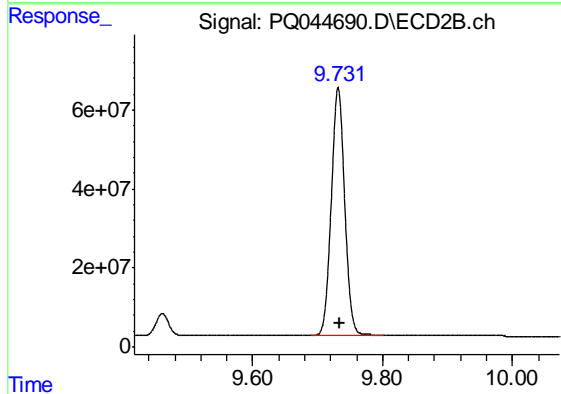
#1 Tetrachloro-m-xylene

R.T.: 4.317 min  
 Delta R.T.: 0.000 min  
 Response: 219239480  
 Conc: 79.44 ng/ml



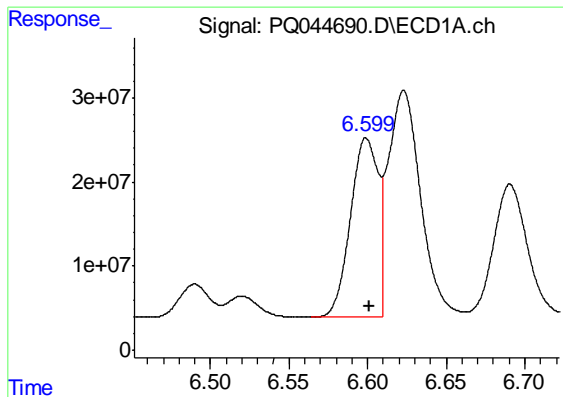
#2 Decachlorobiphenyl

R.T.: 11.504 min  
 Delta R.T.: -0.007 min  
 Response: 740122343  
 Conc: 140.41 ng/ml



#2 Decachlorobiphenyl

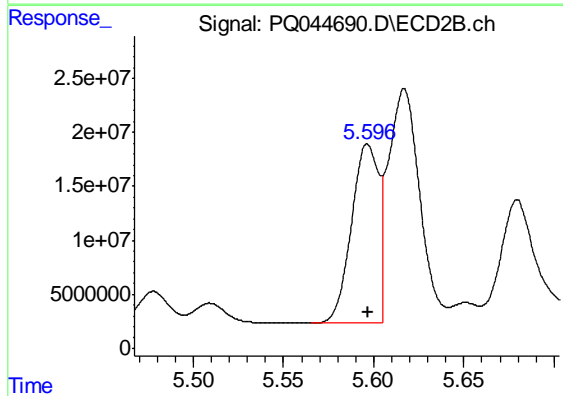
R.T.: 9.732 min  
 Delta R.T.: -0.003 min  
 Response: 897111082  
 Conc: 147.69 ng/ml



#3 AR-1016-1

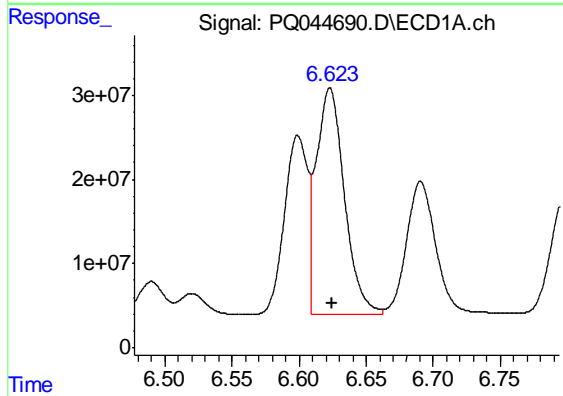
R.T.: 6.599 min  
 Delta R.T.: -0.002 min  
 Response: 259562102  
 Conc: 1427.36 ng/ml

Instrument :  
 ECD\_Q  
 ClientSampleId :  
 AR1660501



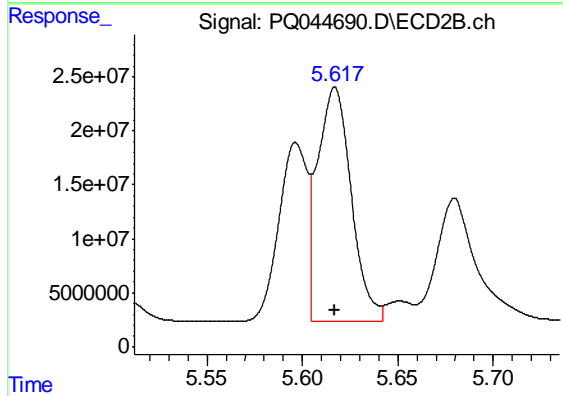
#3 AR-1016-1

R.T.: 5.597 min  
 Delta R.T.: 0.000 min  
 Response: 172986323  
 Conc: 1473.30 ng/ml



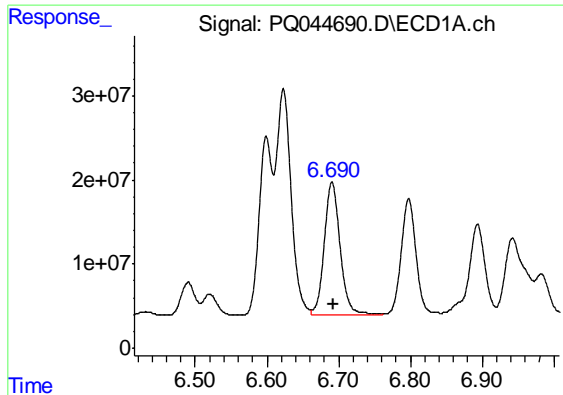
#4 AR-1016-2

R.T.: 6.623 min  
 Delta R.T.: -0.001 min  
 Response: 392392465  
 Conc: 1427.57 ng/ml



#4 AR-1016-2

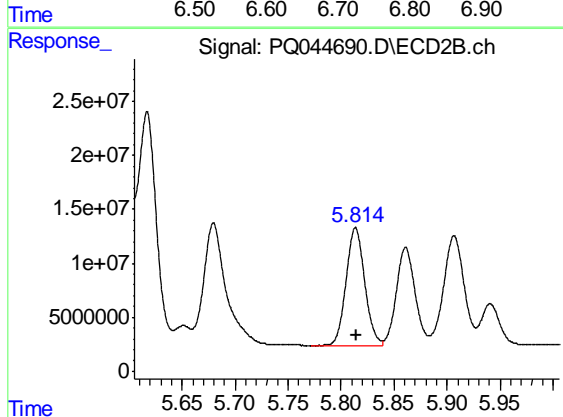
R.T.: 5.617 min  
 Delta R.T.: 0.000 min  
 Response: 266646292  
 Conc: 1542.21 ng/ml



#5 AR-1016-3

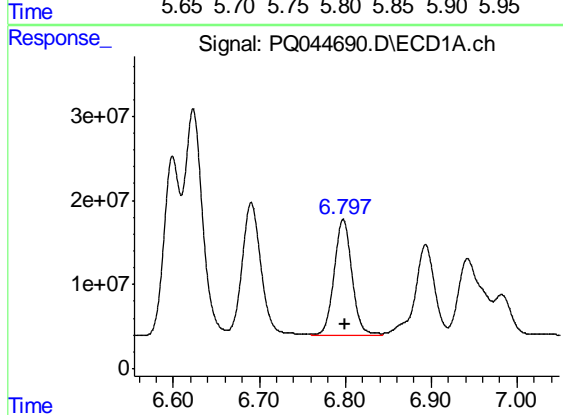
R.T.: 6.691 min  
 Delta R.T.: -0.002 min  
 Response: 244216041  
 Conc: 1389.75 ng/ml

Instrument :  
 ECD\_Q  
 ClientSampleId :  
 AR1660501



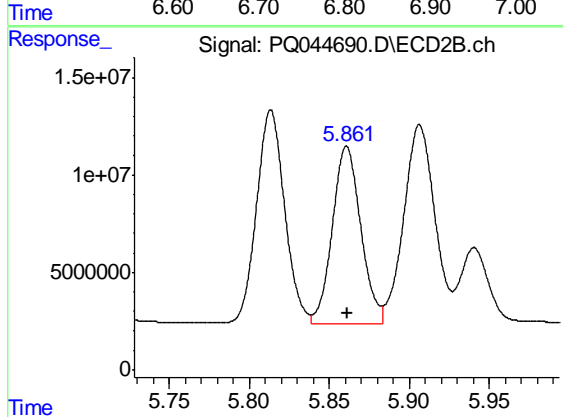
#5 AR-1016-3

R.T.: 5.814 min  
 Delta R.T.: 0.000 min  
 Response: 135805269  
 Conc: 1502.12 ng/ml



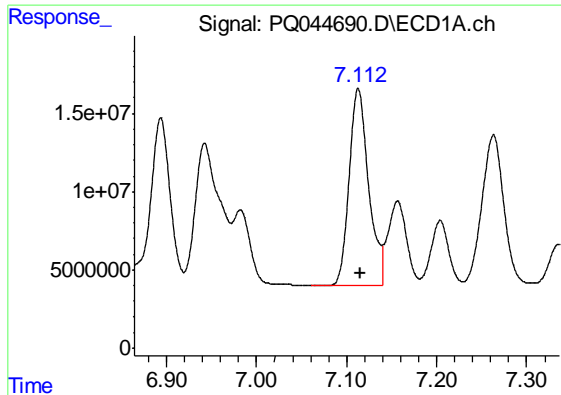
#6 AR-1016-4

R.T.: 6.798 min  
 Delta R.T.: -0.002 min  
 Response: 199456581  
 Conc: 1433.41 ng/ml



#6 AR-1016-4

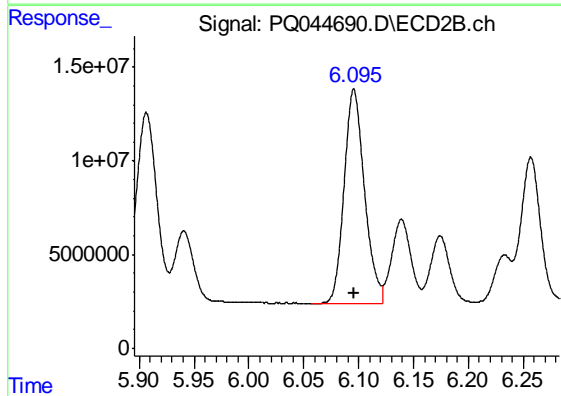
R.T.: 5.861 min  
 Delta R.T.: 0.000 min  
 Response: 113206714  
 Conc: 1423.80 ng/ml



#7 AR-1016-5

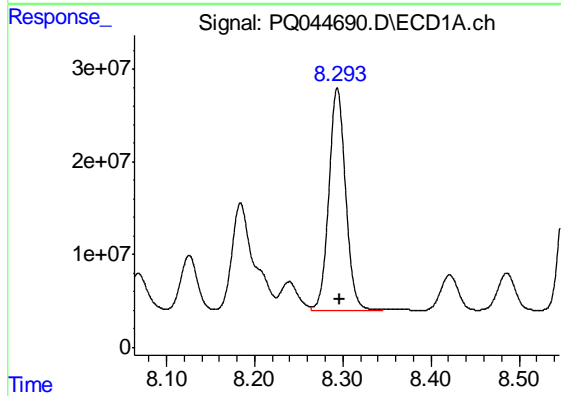
R.T.: 7.113 min  
 Delta R.T.: -0.002 min  
 Response: 188069579  
 Conc: 1401.86 ng/ml

Instrument :  
 ECD\_Q  
 ClientSampleId :  
 AR1660501



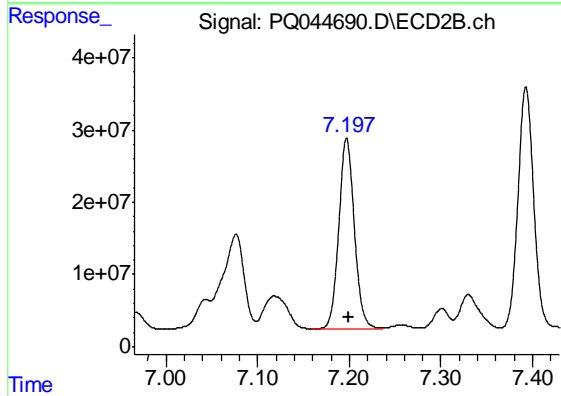
#7 AR-1016-5

R.T.: 6.096 min  
 Delta R.T.: 0.000 min  
 Response: 149024296  
 Conc: 1450.50 ng/ml



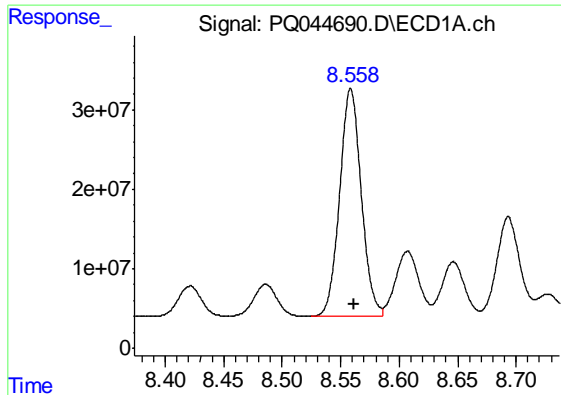
#31 AR-1260-1

R.T.: 8.294 min  
 Delta R.T.: -0.003 min  
 Response: 316981160  
 Conc: 1433.17 ng/ml



#31 AR-1260-1

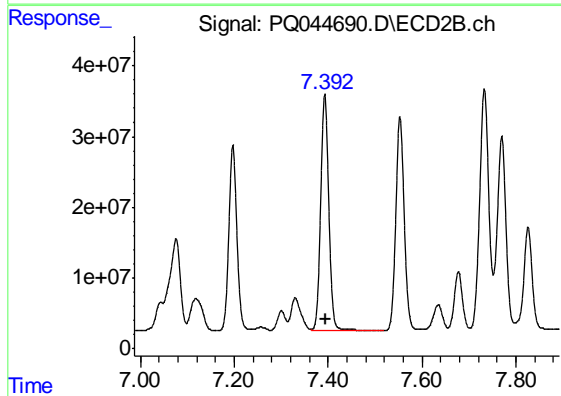
R.T.: 7.197 min  
 Delta R.T.: -0.002 min  
 Response: 312124900  
 Conc: 1466.76 ng/ml



#32 AR-1260-2

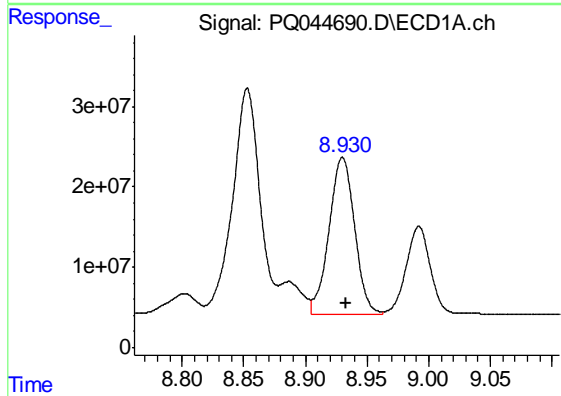
R.T.: 8.559 min  
 Delta R.T.: -0.003 min  
 Response: 368312764  
 Conc: 1431.11 ng/ml

Instrument :  
 ECD\_Q  
 ClientSampled :  
 AR1660501



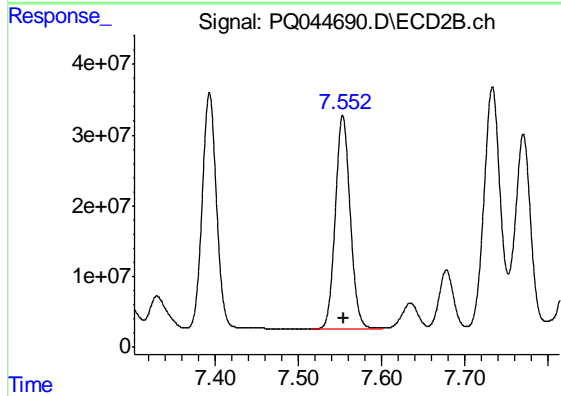
#32 AR-1260-2

R.T.: 7.393 min  
 Delta R.T.: 0.000 min  
 Response: 404099268  
 Conc: 1492.61 ng/ml



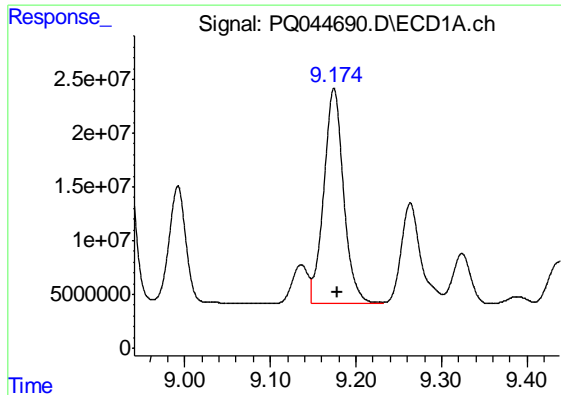
#33 AR-1260-3

R.T.: 8.930 min  
 Delta R.T.: -0.003 min  
 Response: 282732648  
 Conc: 1397.30 ng/ml



#33 AR-1260-3

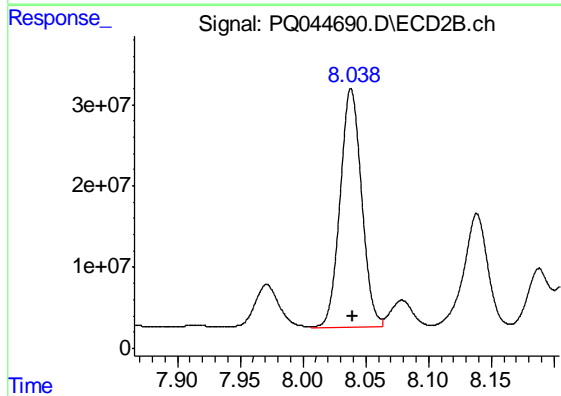
R.T.: 7.553 min  
 Delta R.T.: -0.001 min  
 Response: 377313667  
 Conc: 1526.03 ng/ml



#34 AR-1260-4

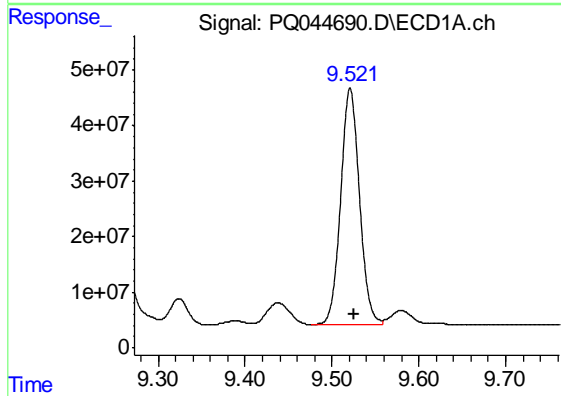
R.T.: 9.174 min  
 Delta R.T.: -0.004 min  
 Response: 321021211  
 Conc: 1439.83 ng/ml

Instrument :  
 ECD\_Q  
 ClientSampleId :  
 AR1660501



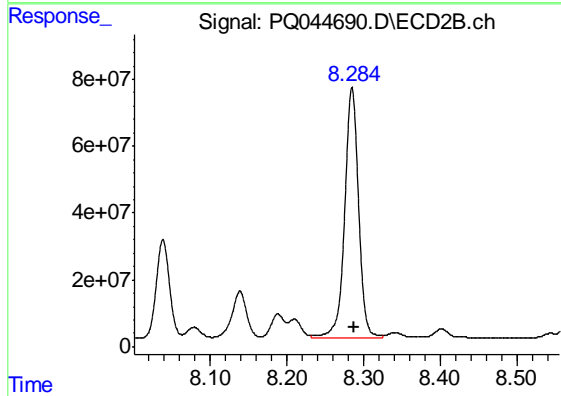
#34 AR-1260-4

R.T.: 8.038 min  
 Delta R.T.: -0.002 min  
 Response: 350920170  
 Conc: 1520.30 ng/ml



#35 AR-1260-5

R.T.: 9.521 min  
 Delta R.T.: -0.005 min  
 Response: 643422707  
 Conc: 1473.11 ng/ml



#35 AR-1260-5

R.T.: 8.285 min  
 Delta R.T.: -0.002 min  
 Response: 947222962  
 Conc: 1565.97 ng/ml