

Data Path : Z:\pestpcbsrv\HPCHEM1\ECD_Q\Data\PQ110119\
 Data File : PQ044691.D
 Signal(s) : Signal #1: ECD1A.ch Signal #2: ECD2B.ch
 Acq On : 01 Nov 2019 18:15
 Operator : HP\AJ
 Sample : AR1221ICC100
 Misc :
 ALS Vial : 8 Sample Multiplier: 1

Instrument :
 ECD_Q
 ClientSampleId :
 AR1221101

Integration File signal 1: autoint1.e
 Integration File signal 2: autoint2.e
 Quant Time: Nov 02 02:00:47 2019
 Quant Method : Z:\pestpcbsrv\HPCHEM1\ECD_Q\Method\PQ110119CLP.M
 Quant Title : GC EXTRACTABLES
 QLast Update : Sat Nov 02 01:59:39 2019
 Response via : Initial Calibration
 Integrator: ChemStation

Volume Inj. : 1 µl
 Signal #1 Phase : ZB MR1 Signal #2 Phase: ZB MR2
 Signal #1 Info : 30Mx0.32mmx 0.5µm Signal #2 Info : 30M x 0.32mm x 0.25µm

Compound	RT#1	RT#2	Resp#1	Resp#2	ng/ml	ng/ml

System Monitoring Compounds						
1) SA Tetrachlo...	5.281	4.316	31732686	14374720	4.853	4.808
2) SA Decachlor...	11.506	9.731	57368536	63918912	10.665	10.236
Target Compounds						
8) L2 AR-1221-1	5.525	4.579	6829175	3994500	98.986	111.092
9) L2 AR-1221-2	5.627	4.683	4977787	2770083	102.424	102.595
10) L2 AR-1221-3	5.713	4.773	16500387	9167945	103.714	99.357

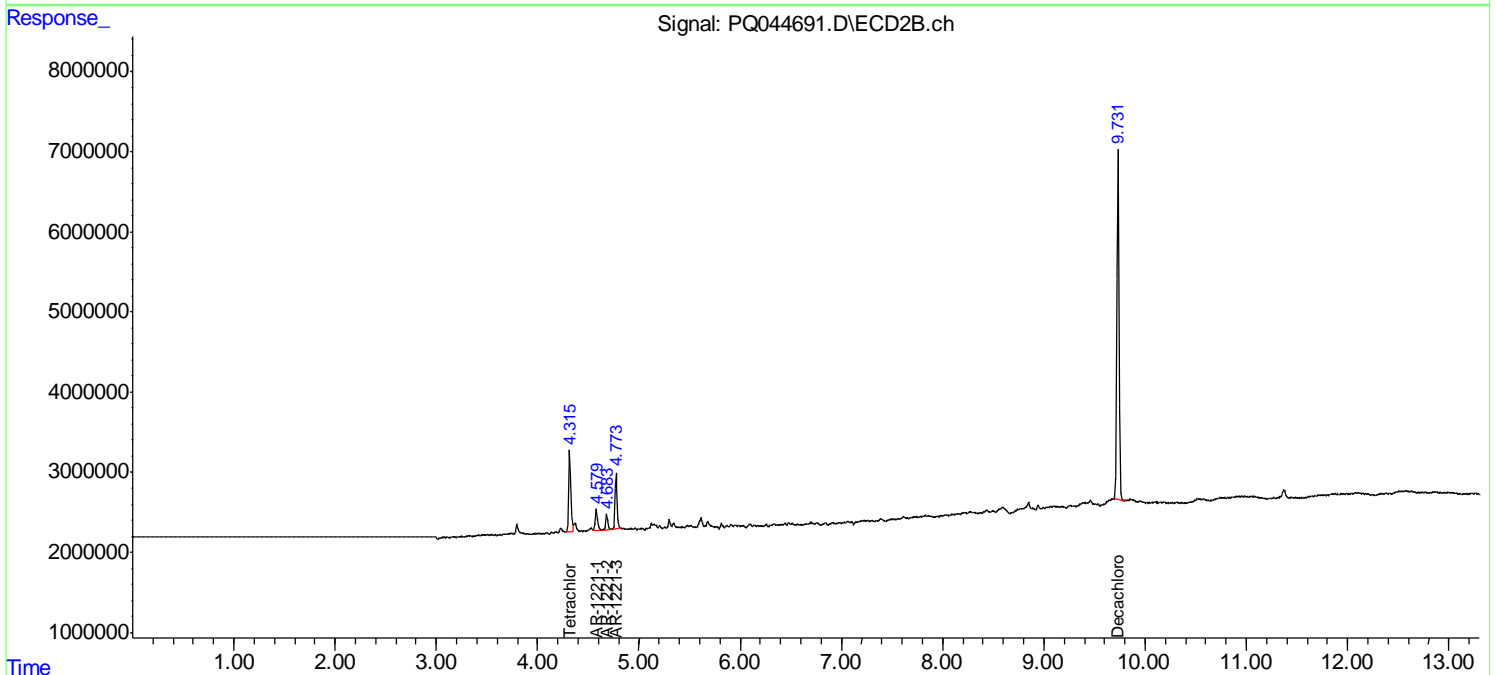
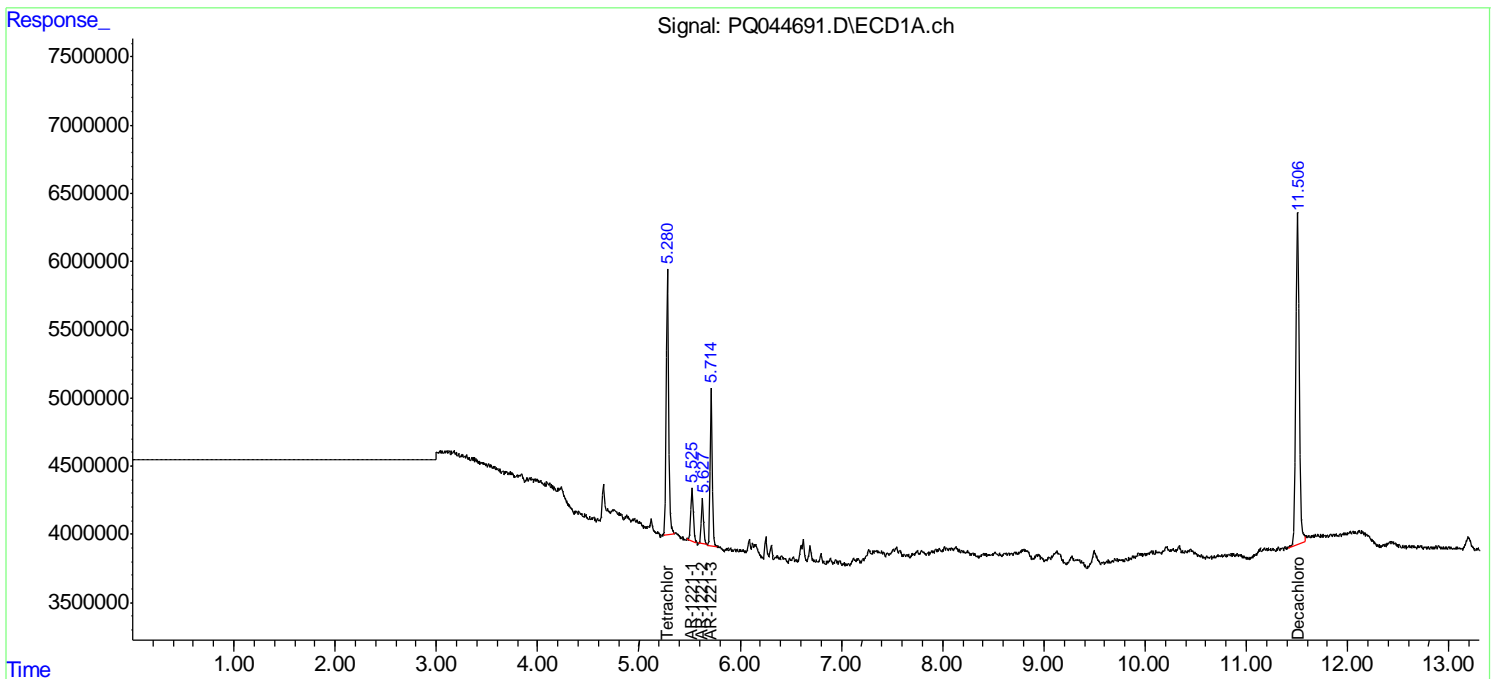
(f)=RT Delta > 1/2 Window (#)=Amounts differ by > 25% (m)=manual int.

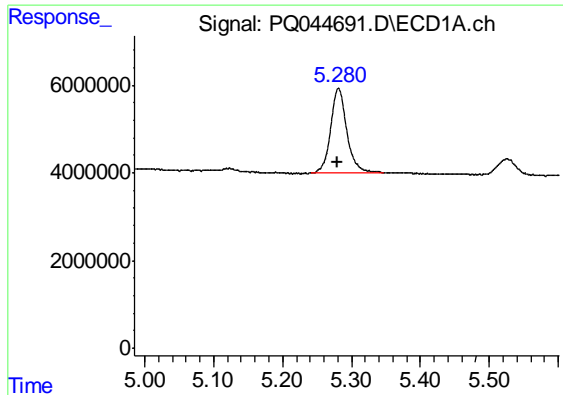
Data Path : Z:\pestpcbsrv\HPCHEM1\ECD_Q\Data\PQ110119\
 Data File : PQ044691.D
 Signal(s) : Signal #1: ECD1A.ch Signal #2: ECD2B.ch
 Acq On : 01 Nov 2019 18:15
 Operator : HP\AJ
 Sample : AR1221ICC100
 Misc :
 ALS Vial : 8 Sample Multiplier: 1

Instrument :
 ECD_Q
ClientSampled :
 AR1221101

Integration File signal 1: autoint1.e
 Integration File signal 2: autoint2.e
 Quant Time: Nov 02 02:00:47 2019
 Quant Method : Z:\pestpcbsrv\HPCHEM1\ECD_Q\Method\PQ110119CLP.M
 Quant Title : GC EXTRACTABLES
 QLast Update : Sat Nov 02 01:59:39 2019
 Response via : Initial Calibration
 Integrator: ChemStation

Volume Inj. : 1 µl
 Signal #1 Phase : ZB MR1 Signal #2 Phase: ZB MR2
 Signal #1 Info : 30Mx0.32mmx 0.5µm Signal #2 Info : 30M x 0.32mm x 0.25µm

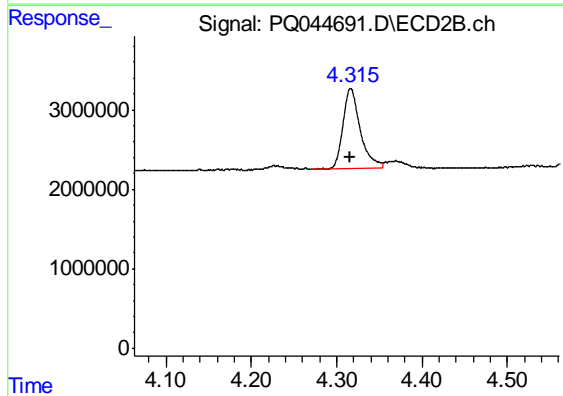




#1 Tetrachloro-m-xylene

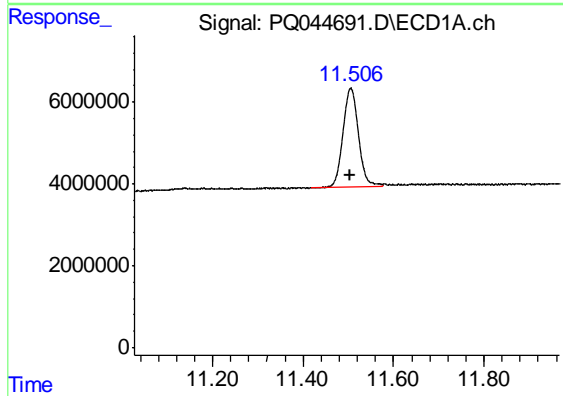
R.T.: 5.281 min
Delta R.T.: 0.001 min
Response: 31732686
Conc: 4.85 ng/ml

Instrument :
ECD_Q
ClientSampleId :
AR1221101



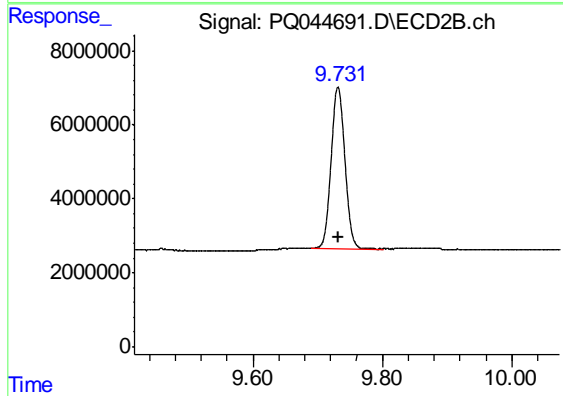
#1 Tetrachloro-m-xylene

R.T.: 4.316 min
Delta R.T.: 0.000 min
Response: 14374720
Conc: 4.81 ng/ml



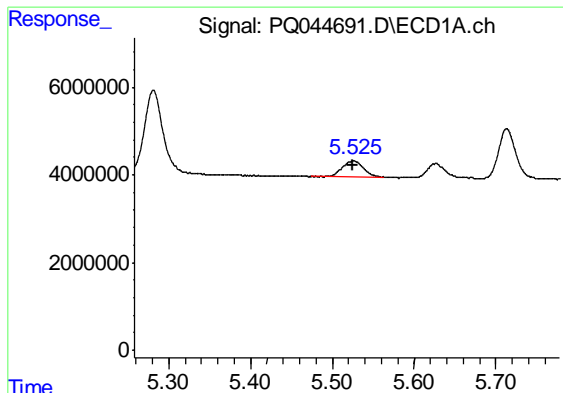
#2 Decachlorobiphenyl

R.T.: 11.506 min
Delta R.T.: 0.003 min
Response: 57368536
Conc: 10.67 ng/ml



#2 Decachlorobiphenyl

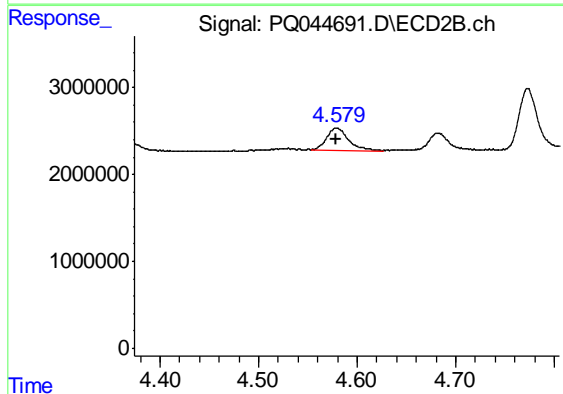
R.T.: 9.731 min
Delta R.T.: 0.000 min
Response: 63918912
Conc: 10.24 ng/ml



#8 AR-1221-1

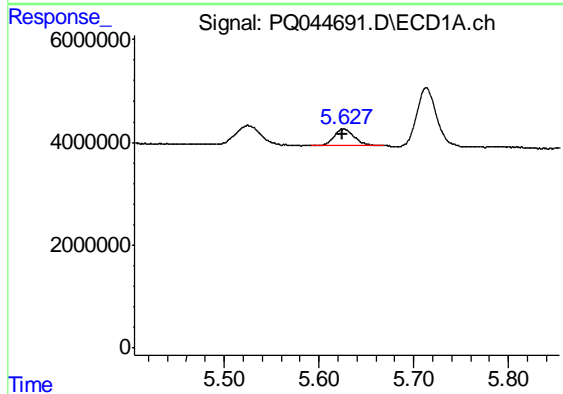
R.T.: 5.525 min
 Delta R.T.: 0.000 min
 Response: 6829175
 Conc: 98.99 ng/ml

Instrument :
 ECD_Q
 ClientSampleId :
 AR1221101



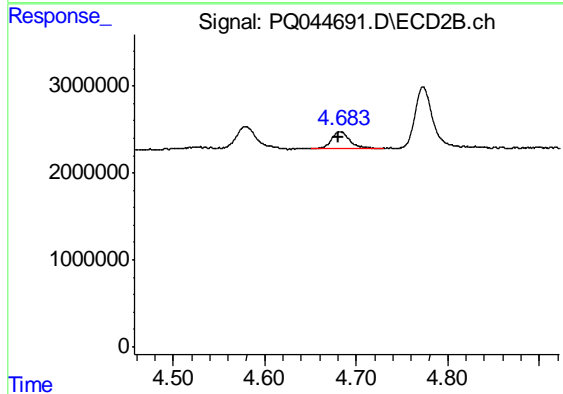
#8 AR-1221-1

R.T.: 4.579 min
 Delta R.T.: 0.000 min
 Response: 3994500
 Conc: 111.09 ng/ml



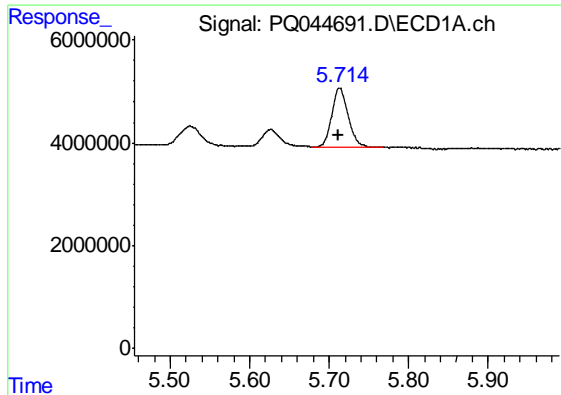
#9 AR-1221-2

R.T.: 5.627 min
 Delta R.T.: 0.002 min
 Response: 4977787
 Conc: 102.42 ng/ml



#9 AR-1221-2

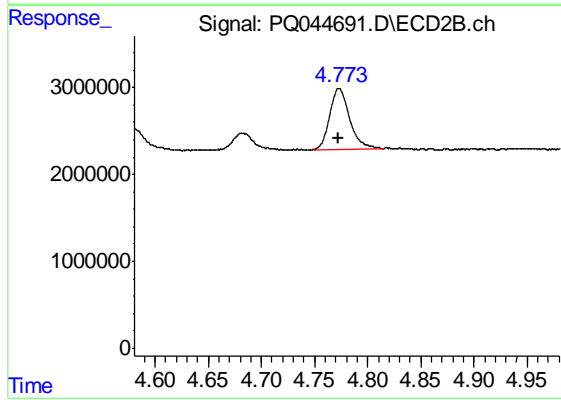
R.T.: 4.683 min
 Delta R.T.: 0.002 min
 Response: 2770083
 Conc: 102.60 ng/ml



#10 AR-1221-3

R.T.: 5.713 min
Delta R.T.: 0.000 min
Response: 16500387
Conc: 103.71 ng/ml

Instrument :
ECD_Q
ClientSampleId :
AR1221101



#10 AR-1221-3

R.T.: 4.773 min
Delta R.T.: 0.000 min
Response: 9167945
Conc: 99.36 ng/ml