

Data Path : Z:\pestpcbsrv\HPCHEM1\ECD_Q\Data\PQ110122\
 Data File : PQ059903.D
 Signal(s) : Signal #1: ECD1A.ch Signal #2: ECD2B.ch
 Acq On : 01 Nov 2022 17:06
 Operator : YP\AJ
 Sample : PQ110122ICV500
 Misc :
 ALS Vial : 31 Sample Multiplier: 1

Instrument :
 ECD_Q
 ClientSampleId :
 ICVPQ110122

Integration File signal 1: autoint1.e
 Integration File signal 2: autoint2.e
 Quant Time: Nov 01 17:20:27 2022
 Quant Method : Z:\pestpcbsrv\HPCHEM1\ECD_Q\Method\PQ110122.M
 Quant Title : GC EXTRACTABLES
 QLast Update : Tue Nov 01 17:05:38 2022
 Response via : Initial Calibration
 Integrator: ChemStation

Volume Inj. : 2 µl
 Signal #1 Phase : ZB-MR1 Signal #2 Phase: ZB-MR2
 Signal #1 Info : 30Mx0.32mmx 0.50µ Signal #2 Info : 30M x 0.32mm x 0.25µm

Compound	RT#1	RT#2	Resp#1	Resp#2	ng/ml	ng/ml

System Monitoring Compounds						
1) SA Tetrachlo...	3.458	2.807	599.4E6	407.7E6	49.676	51.388
2) SA Decachlor...	8.614	7.573	361.1E6	369.3E6	49.495	50.775
Target Compounds						
3) L1 AR-1016-1	4.555	3.811	207.3E6	135.7E6	477.102	511.902
4) L1 AR-1016-2	4.575	3.827	310.0E6	200.0E6	493.759	507.518
5) L1 AR-1016-3	4.633	3.988	188.5E6	105.9E6	486.857	517.170
6) L1 AR-1016-4	4.725	4.035	156.8E6	81660311	487.092	513.033
7) L1 AR-1016-5	5.010	4.231	150.8E6	104.7E6	492.767	508.078
31) L7 AR-1260-1	6.107	5.223	274.7E6	200.8E6	490.914	506.900
32) L7 AR-1260-2	6.365	5.411	324.8E6	243.6E6	485.146	505.543
33) L7 AR-1260-3	6.718	5.554	209.0E6	234.2E6	490.920	505.114
34) L7 AR-1260-4	6.935	6.015	246.3E6	173.4E6	492.275	507.009
35) L7 AR-1260-5	7.243	6.259	474.9E6	422.9E6	485.770	508.781

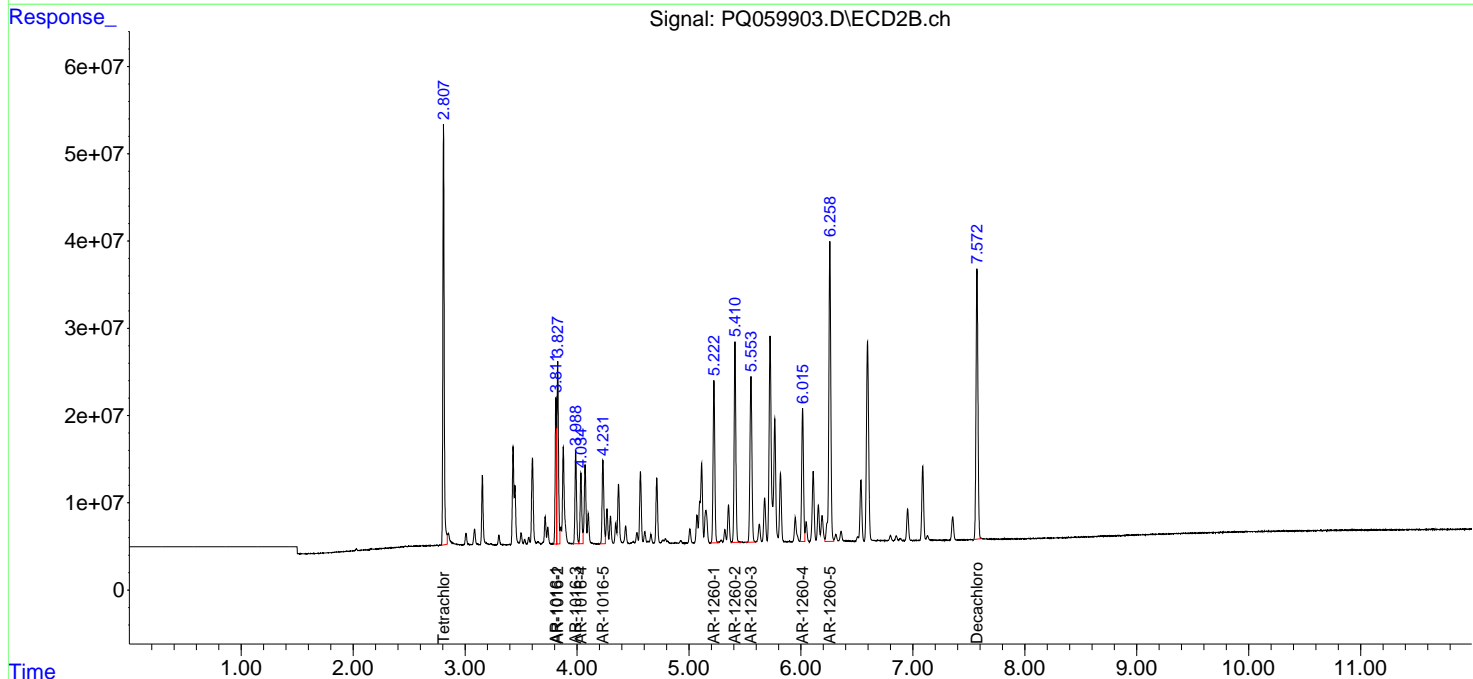
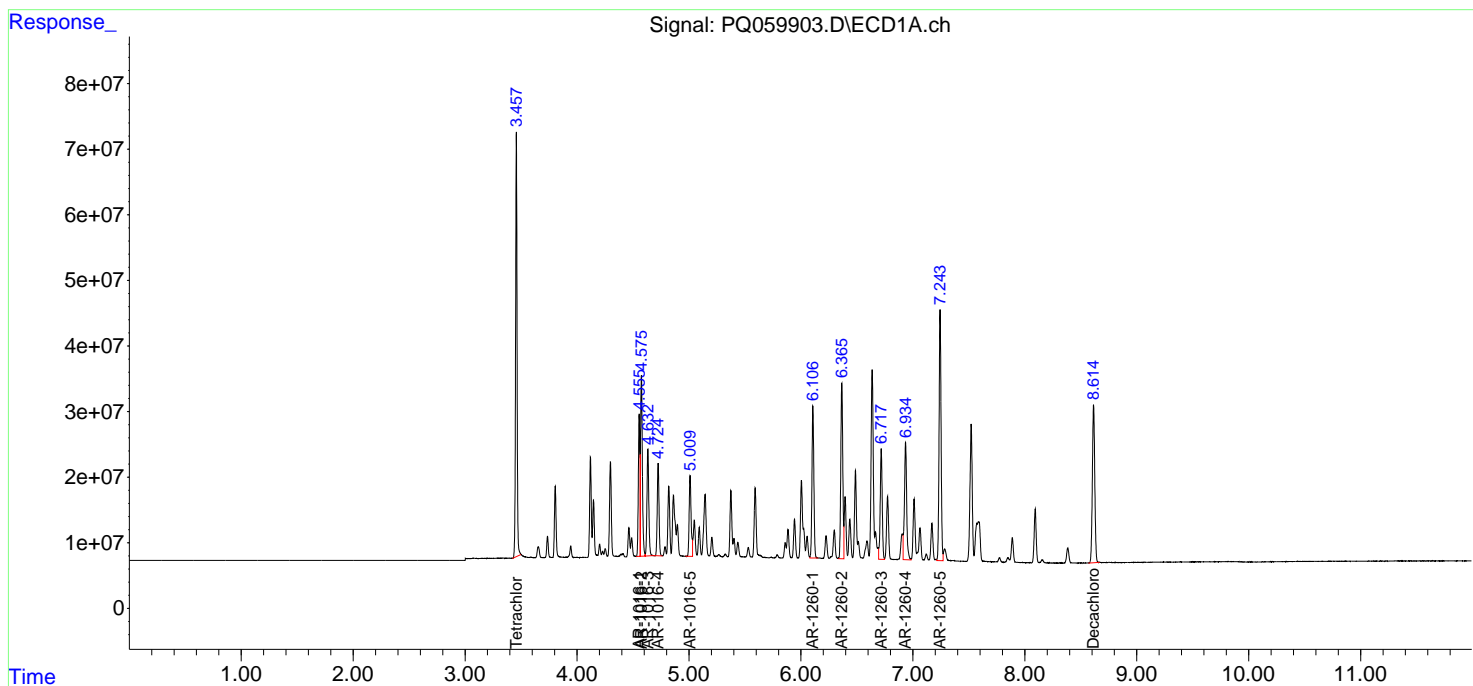
(f)=RT Delta > 1/2 Window (#)=Amounts differ by > 25% (m)=manual int.

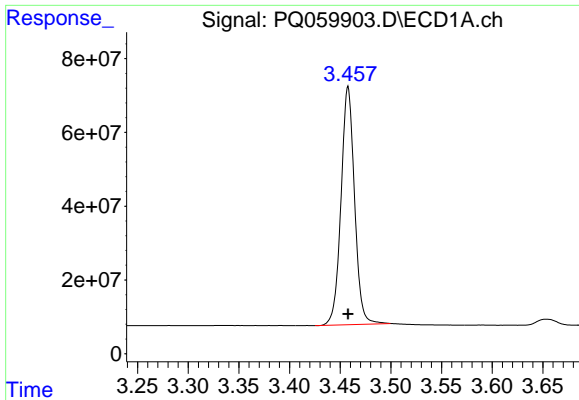
Data Path : Z:\pestpcbsrv\HPCHEM1\ECD_Q\Data\PQ110122\
 Data File : PQ059903.D
 Signal(s) : Signal #1: ECD1A.ch Signal #2: ECD2B.ch
 Acq On : 01 Nov 2022 17:06
 Operator : YP\AJ
 Sample : PQ110122ICV500
 Misc :
 ALS Vial : 31 Sample Multiplier: 1

Instrument :
 ECD_Q
 ClientSampleId :
 ICVPQ110122

Integration File signal 1: autoint1.e
 Integration File signal 2: autoint2.e
 Quant Time: Nov 01 17:20:27 2022
 Quant Method : Z:\pestpcbsrv\HPCHEM1\ECD_Q\Method\PQ110122.M
 Quant Title : GC EXTRACTABLES
 QLast Update : Tue Nov 01 17:05:38 2022
 Response via : Initial Calibration
 Integrator: ChemStation

Volume Inj. : 2 µl
 Signal #1 Phase : ZB-MR1 Signal #2 Phase: ZB-MR2
 Signal #1 Info : 30Mx0.32mmx 0.50µ Signal #2 Info : 30M x 0.32mm x 0.25µm

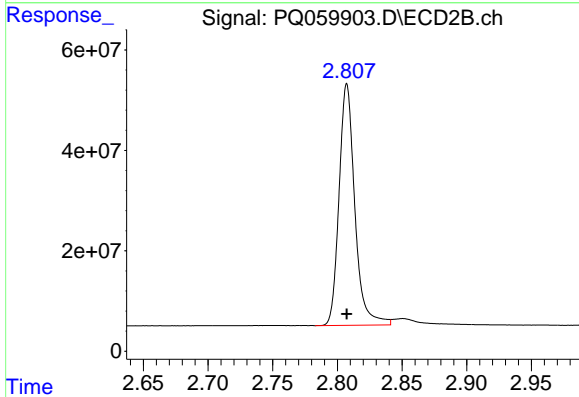




#1 Tetrachloro-m-xylene

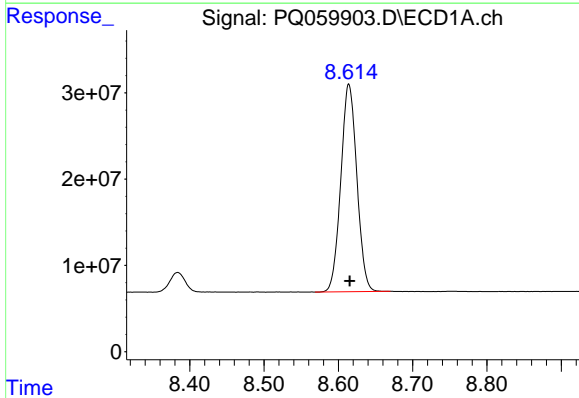
R.T.: 3.458 min
Delta R.T.: 0.000 min
Response: 599380602
Conc: 49.68 ng/ml

Instrument :
ECD_Q
ClientSampleId :
ICVPQ110122



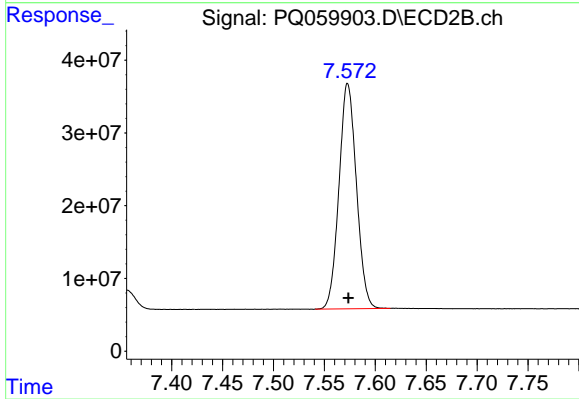
#1 Tetrachloro-m-xylene

R.T.: 2.807 min
Delta R.T.: 0.000 min
Response: 407718292
Conc: 51.39 ng/ml



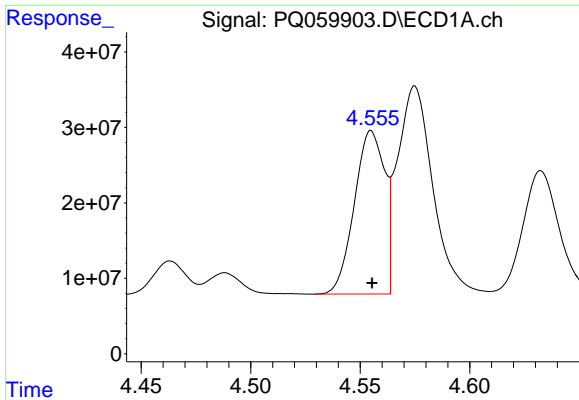
#2 Decachlorobiphenyl

R.T.: 8.614 min
Delta R.T.: -0.001 min
Response: 361146957
Conc: 49.50 ng/ml



#2 Decachlorobiphenyl

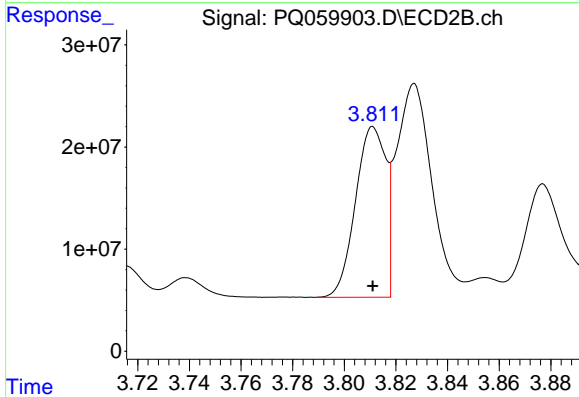
R.T.: 7.573 min
Delta R.T.: 0.000 min
Response: 369338756
Conc: 50.77 ng/ml



#3 AR-1016-1

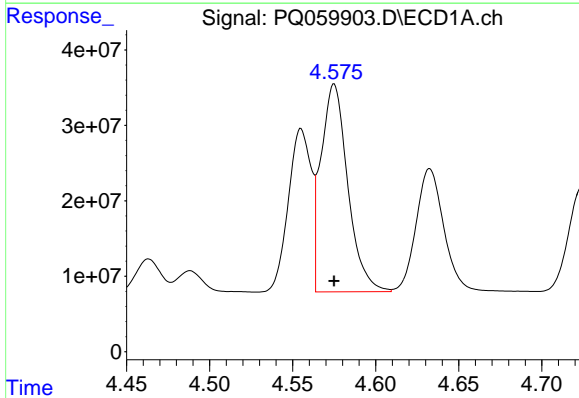
R.T.: 4.555 min
 Delta R.T.: 0.000 min
 Response: 207294115
 Conc: 477.10 ng/ml

Instrument :
 ECD_Q
 ClientSampleId :
 ICPQ110122



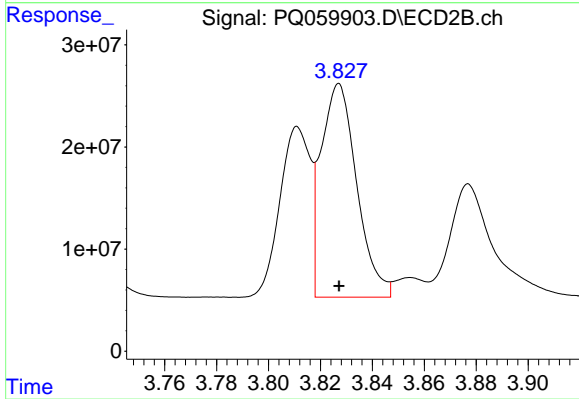
#3 AR-1016-1

R.T.: 3.811 min
 Delta R.T.: 0.000 min
 Response: 135668752
 Conc: 511.90 ng/ml



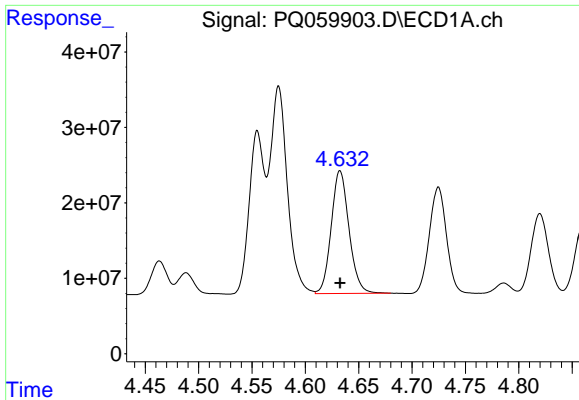
#4 AR-1016-2

R.T.: 4.575 min
 Delta R.T.: 0.000 min
 Response: 309979776
 Conc: 493.76 ng/ml



#4 AR-1016-2

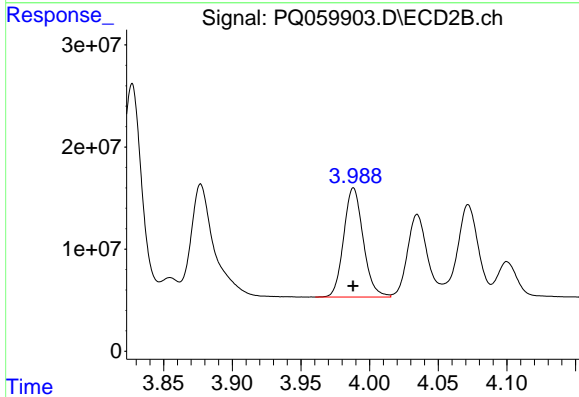
R.T.: 3.827 min
 Delta R.T.: 0.000 min
 Response: 199983210
 Conc: 507.52 ng/ml



#5 AR-1016-3

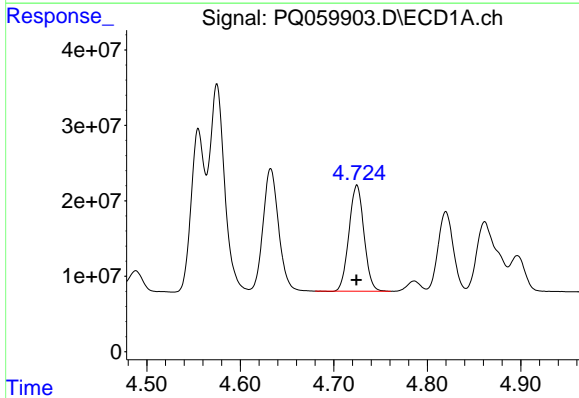
R.T.: 4.633 min
 Delta R.T.: 0.000 min
 Response: 188492141
 Conc: 486.86 ng/ml

Instrument :
 ECD_Q
 ClientSampleId :
 ICPQ110122



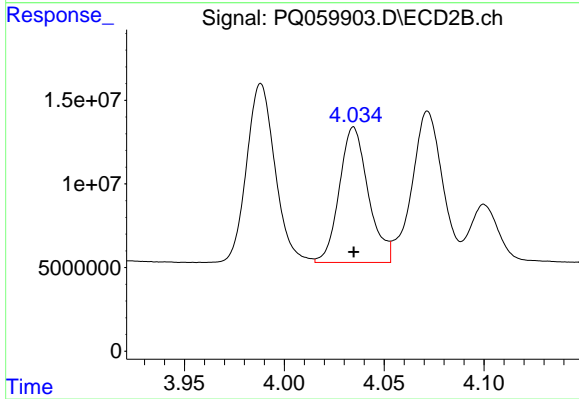
#5 AR-1016-3

R.T.: 3.988 min
 Delta R.T.: 0.000 min
 Response: 105869873
 Conc: 517.17 ng/ml



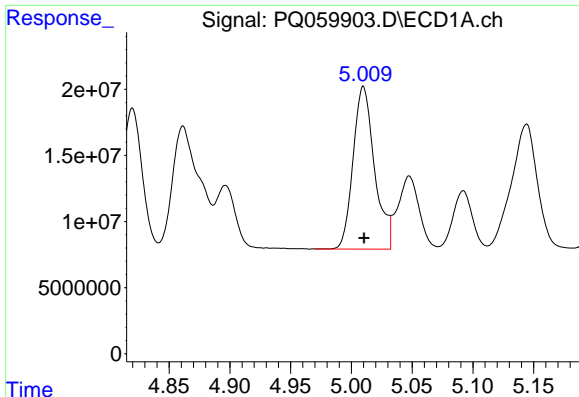
#6 AR-1016-4

R.T.: 4.725 min
 Delta R.T.: 0.000 min
 Response: 156843918
 Conc: 487.09 ng/ml



#6 AR-1016-4

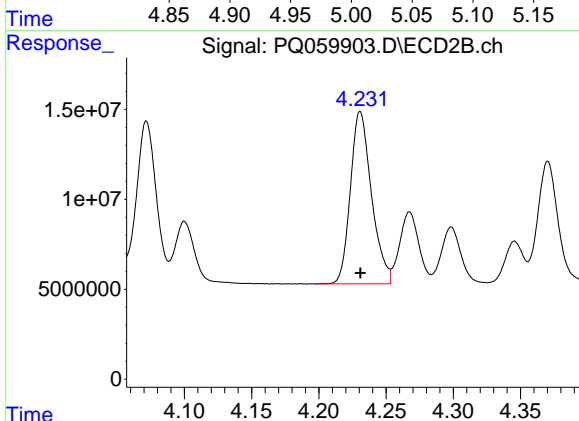
R.T.: 4.035 min
 Delta R.T.: 0.000 min
 Response: 81660311
 Conc: 513.03 ng/ml



#7 AR-1016-5

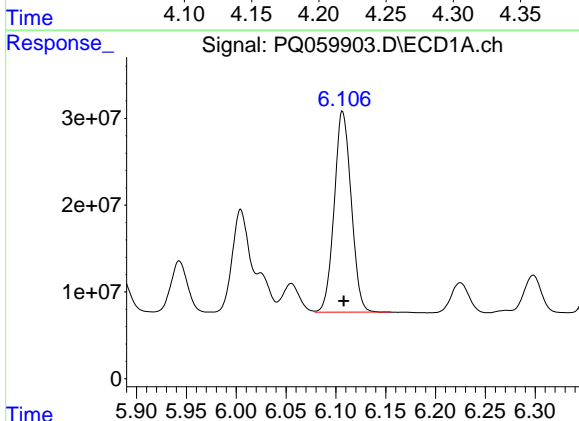
R.T.: 5.010 min
 Delta R.T.: 0.000 min
 Response: 150821286
 Conc: 492.77 ng/ml

Instrument :
 ECD_Q
 ClientSampleId :
 ICPQ110122



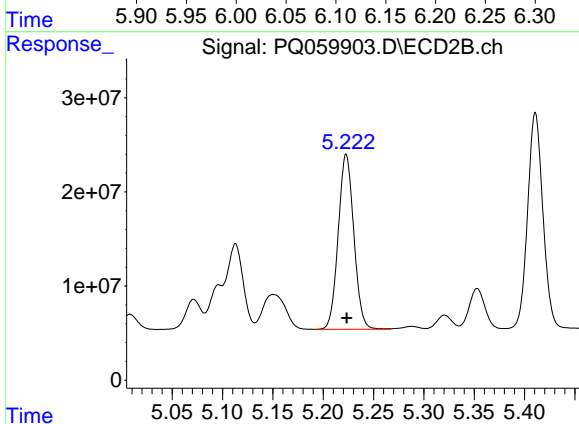
#7 AR-1016-5

R.T.: 4.231 min
 Delta R.T.: 0.000 min
 Response: 104686884
 Conc: 508.08 ng/ml



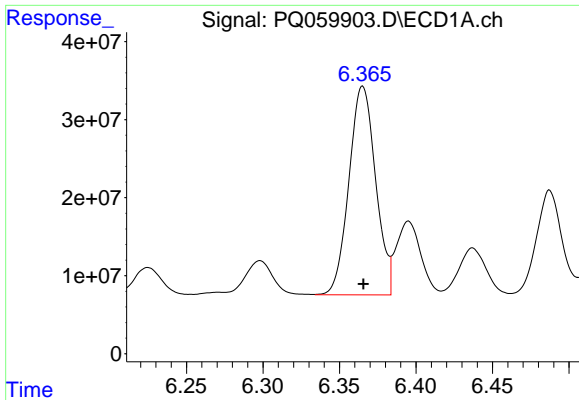
#31 AR-1260-1

R.T.: 6.107 min
 Delta R.T.: -0.001 min
 Response: 274675065
 Conc: 490.91 ng/ml



#31 AR-1260-1

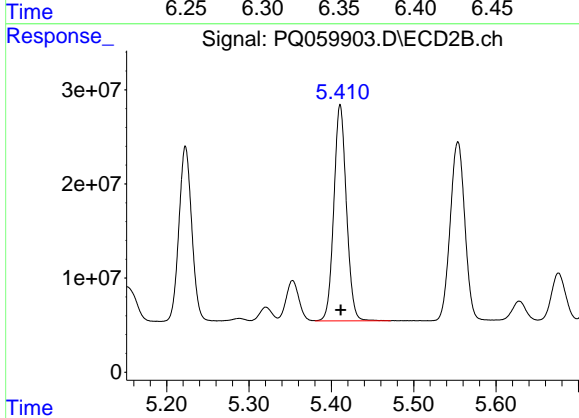
R.T.: 5.223 min
 Delta R.T.: 0.000 min
 Response: 200772693
 Conc: 506.90 ng/ml



#32 AR-1260-2

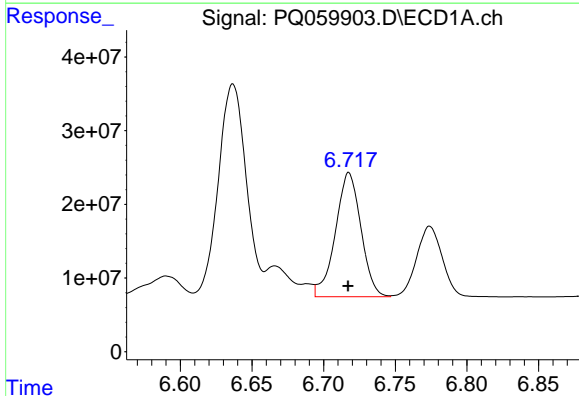
R.T.: 6.365 min
 Delta R.T.: 0.000 min
 Response: 324842313
 Conc: 485.15 ng/ml

Instrument :
 ECD_Q
 ClientSampleId :
 ICPQ110122



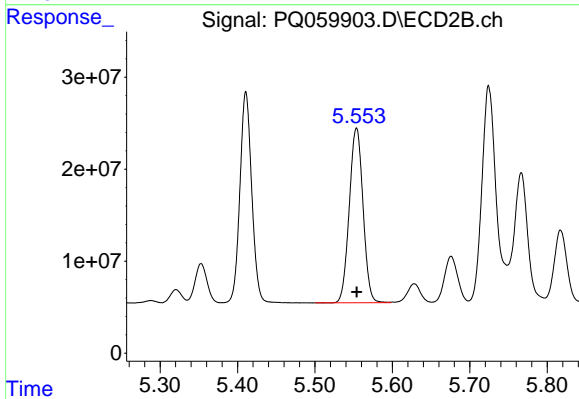
#32 AR-1260-2

R.T.: 5.411 min
 Delta R.T.: 0.000 min
 Response: 243572172
 Conc: 505.54 ng/ml



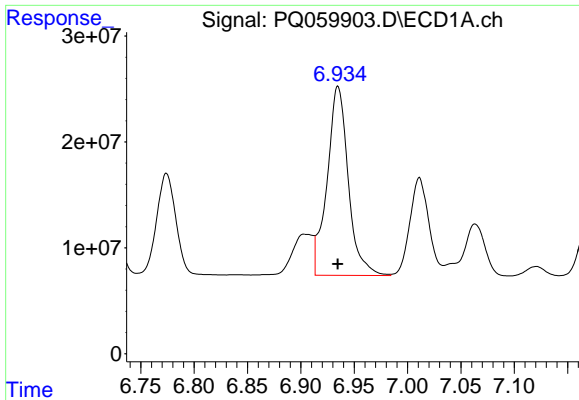
#33 AR-1260-3

R.T.: 6.718 min
 Delta R.T.: 0.000 min
 Response: 209023636
 Conc: 490.92 ng/ml



#33 AR-1260-3

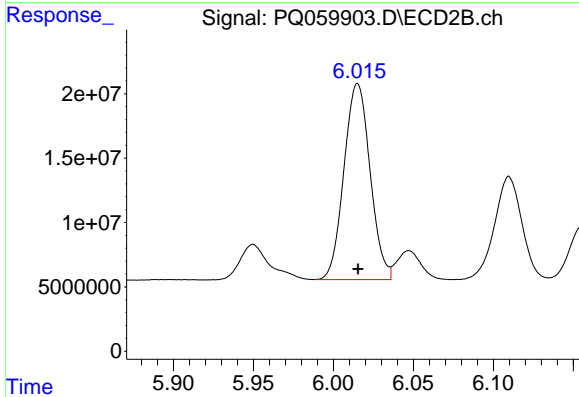
R.T.: 5.554 min
 Delta R.T.: 0.000 min
 Response: 234221955
 Conc: 505.11 ng/ml



#34 AR-1260-4

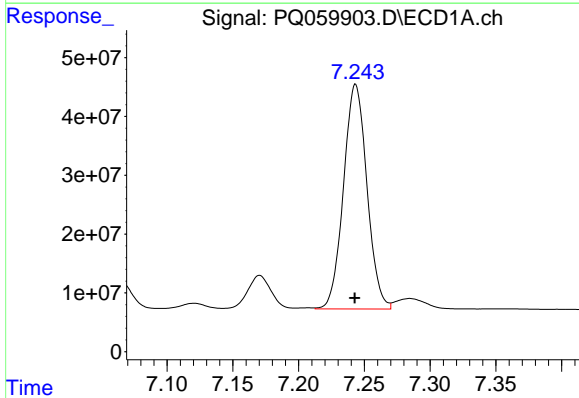
R.T.: 6.935 min
 Delta R.T.: 0.000 min
 Response: 246343324
 Conc: 492.28 ng/ml

Instrument :
 ECD_Q
 ClientSampleId :
 ICVPQ110122



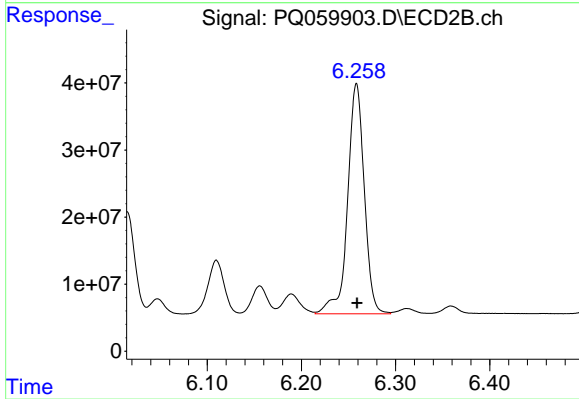
#34 AR-1260-4

R.T.: 6.015 min
 Delta R.T.: 0.000 min
 Response: 173406754
 Conc: 507.01 ng/ml



#35 AR-1260-5

R.T.: 7.243 min
 Delta R.T.: 0.000 min
 Response: 474883983
 Conc: 485.77 ng/ml



#35 AR-1260-5

R.T.: 6.259 min
 Delta R.T.: 0.000 min
 Response: 422897850
 Conc: 508.78 ng/ml