

Data Path : Z:\pestpcbsrv\HPCHEM1\ECD\_Q\Data\PQ110219\  
 Data File : PQ044737.D  
 Signal(s) : Signal #1: ECD1A.ch Signal #2: ECD2B.ch  
 Acq On : 02 Nov 2019 06:44  
 Operator : HP\AJ  
 Sample : AR1248ICC500  
 Misc :  
 ALS Vial : 54 Sample Multiplier: 1

Instrument :  
 ECD\_Q  
 ClientSampleId :  
 AR1248ICC500

Integration File signal 1: autoint1.e  
 Integration File signal 2: autoint2.e  
 Quant Time: Nov 04 01:23:04 2019  
 Quant Method : Z:\pestpcbsrv\HPCHEM1\ECD\_Q\Method\PQ110219.M  
 Quant Title : GC EXTRACTABLES  
 QLast Update : Mon Nov 04 01:22:30 2019  
 Response via : Initial Calibration  
 Integrator: ChemStation

Volume Inj. : 2 µl  
 Signal #1 Phase : ZB-MR1 Signal #2 Phase: ZB-MR2  
 Signal #1 Info : 30Mx0.32mmx 0.50µ Signal #2 Info : 30M x 0.32mm x 0.25µm

Compound	RT#1	RT#2	Resp#1	Resp#2	ng/ml	ng/ml
----------	------	------	--------	--------	-------	-------

-----  
 System Monitoring Compounds

1) SA Tetrachlo...	5.280	4.316	336.6E6	163.1E6	50.000	50.000
2) SA Decachlor...	11.500	9.730	321.1E6	409.7E6	50.000	50.000

Target Compounds

21) L5 AR-1248-1	6.598	5.595	64532647	42025558	500.000	500.000
22) L5 AR-1248-2	6.893	5.860	92082055	60146802	500.000	500.000
23) L5 AR-1248-3	7.112	5.905	101.9E6	61506583	500.000	500.000
24) L5 AR-1248-4	7.540	6.094	113.5E6	74749834	500.000	500.000
25) L5 AR-1248-5	7.580	6.519	113.1E6	78823101	500.000	500.000

-----

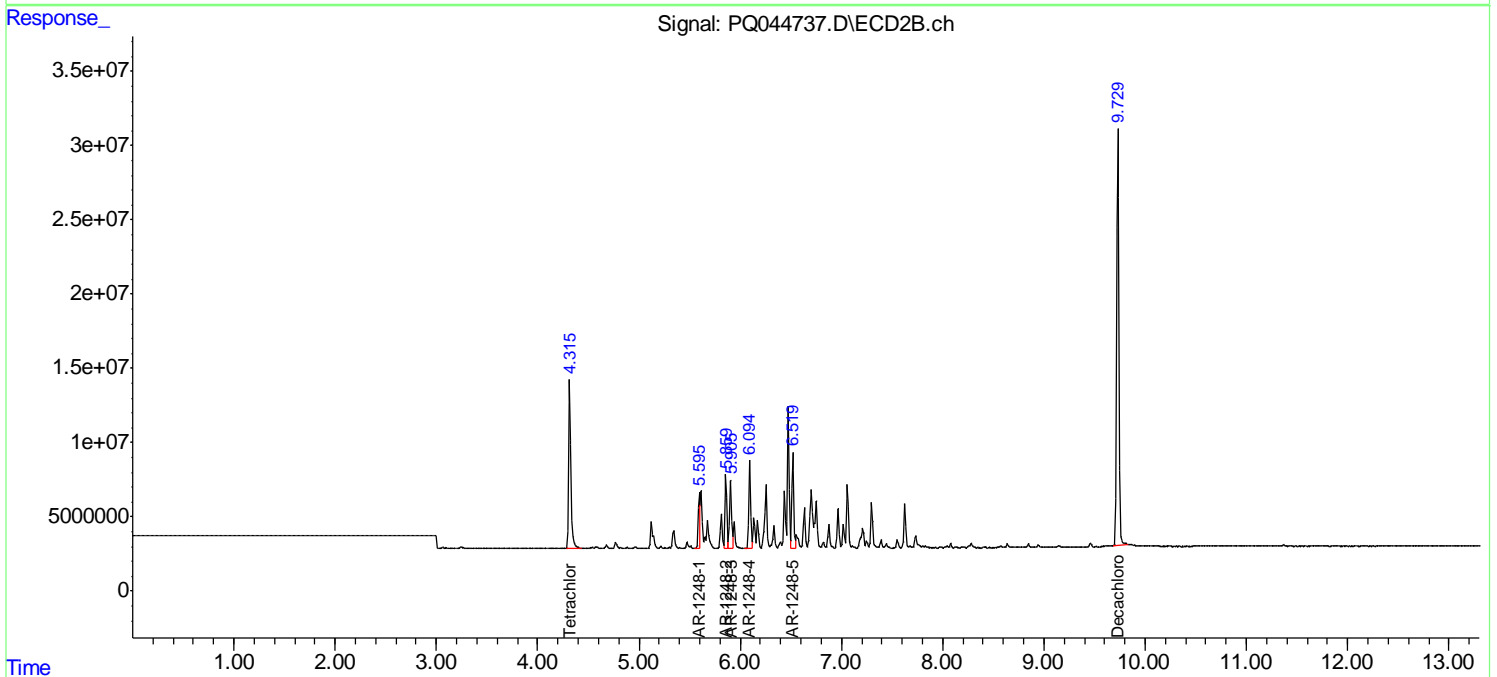
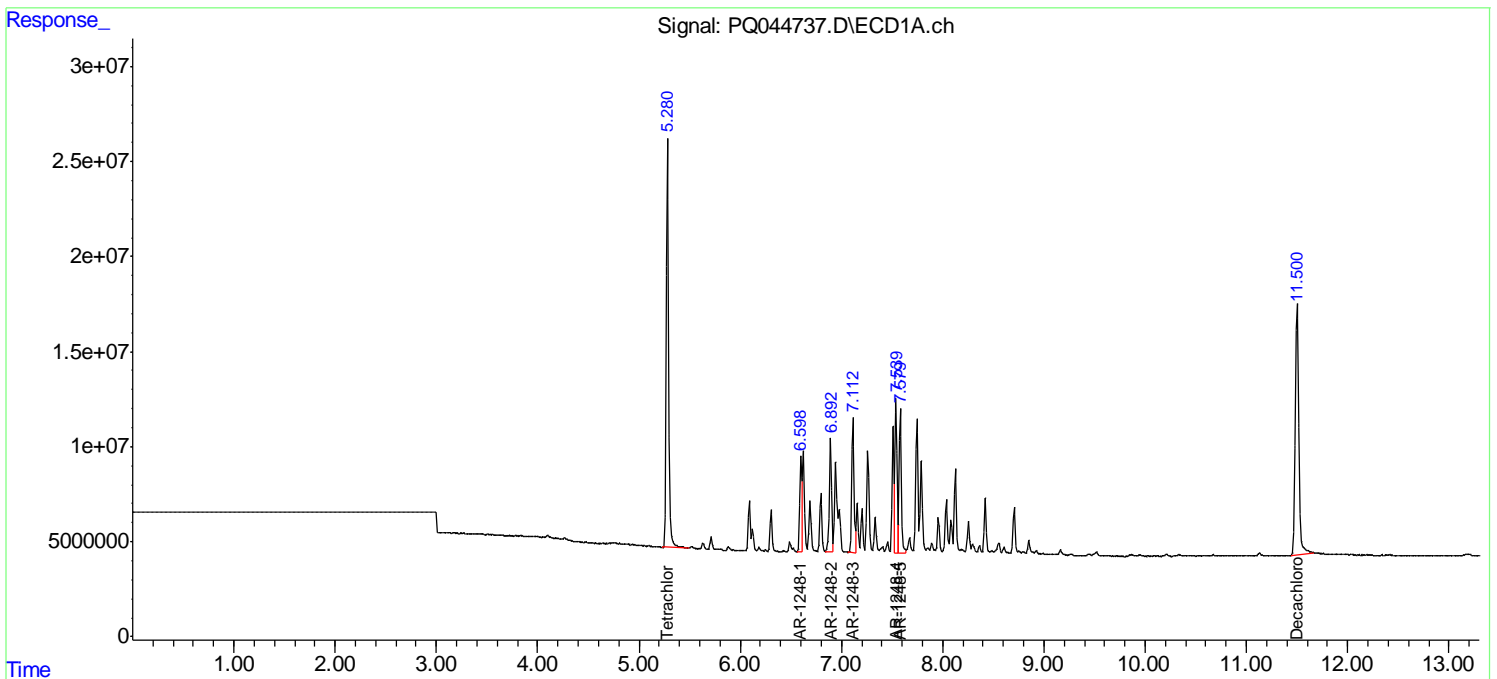
(f)=RT Delta > 1/2 Window (#)=Amounts differ by > 25% (m)=manual int.

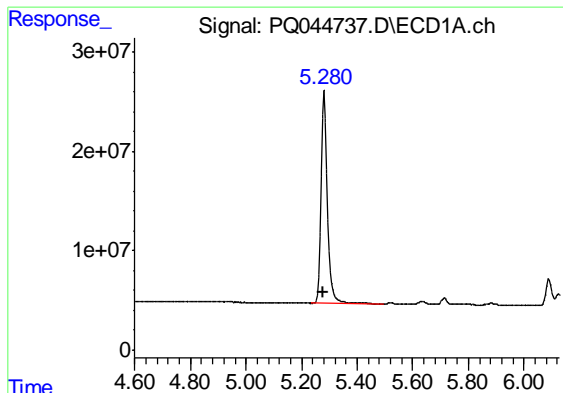
Data Path : Z:\pestpcbsrv\HPCHEM1\ECD\_Q\Data\PQ110219\  
 Data File : PQ044737.D  
 Signal(s) : Signal #1: ECD1A.ch Signal #2: ECD2B.ch  
 Acq On : 02 Nov 2019 06:44  
 Operator : HP\AJ  
 Sample : AR1248ICC500  
 Misc :  
 ALS Vial : 54 Sample Multiplier: 1

Instrument :  
 ECD\_Q  
 ClientSampled :  
 AR1248ICC500

Integration File signal 1: autoint1.e  
 Integration File signal 2: autoint2.e  
 Quant Time: Nov 04 01:23:04 2019  
 Quant Method : Z:\pestpcbsrv\HPCHEM1\ECD\_Q\Method\PQ110219.M  
 Quant Title : GC EXTRACTABLES  
 QLast Update : Mon Nov 04 01:22:30 2019  
 Response via : Initial Calibration  
 Integrator: ChemStation

Volume Inj. : 2 µl  
 Signal #1 Phase : ZB-MR1 Signal #2 Phase: ZB-MR2  
 Signal #1 Info : 30Mx0.32mmx 0.50µ Signal #2 Info : 30M x 0.32mm x 0.25µm

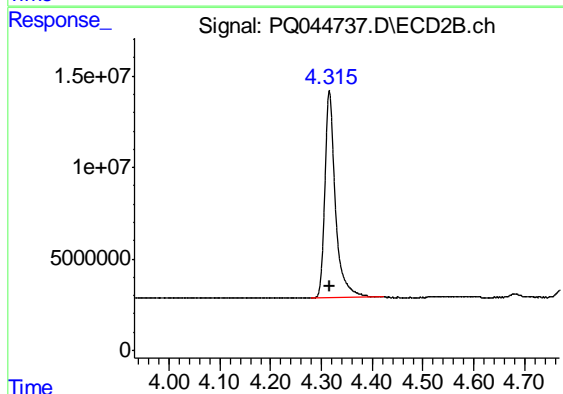




#1 Tetrachloro-m-xylene

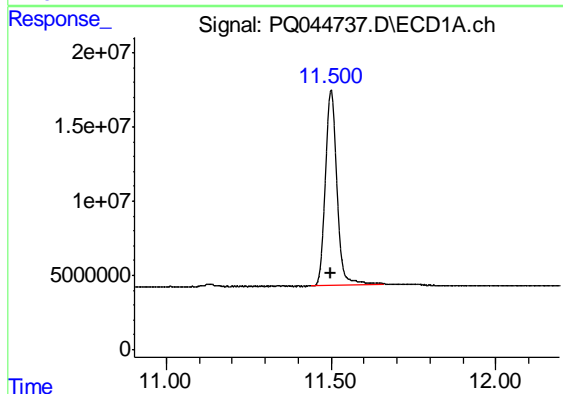
R.T.: 5.280 min  
Delta R.T.: 0.000 min  
Response: 336575011  
Conc: 50.00 ng/ml

Instrument :  
ECD\_Q  
ClientSampleId :  
AR1248ICC500



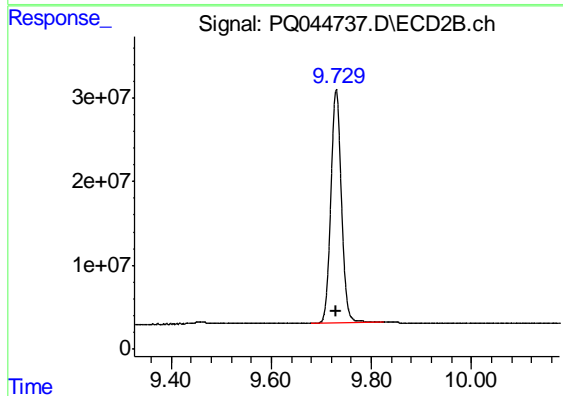
#1 Tetrachloro-m-xylene

R.T.: 4.316 min  
Delta R.T.: 0.000 min  
Response: 163103326  
Conc: 50.00 ng/ml



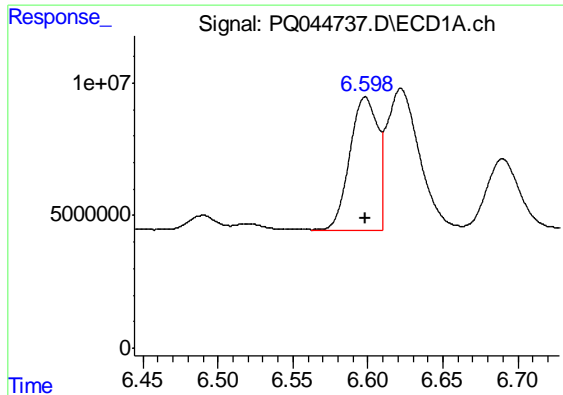
#2 Decachlorobiphenyl

R.T.: 11.500 min  
Delta R.T.: 0.000 min  
Response: 321142228  
Conc: 50.00 ng/ml



#2 Decachlorobiphenyl

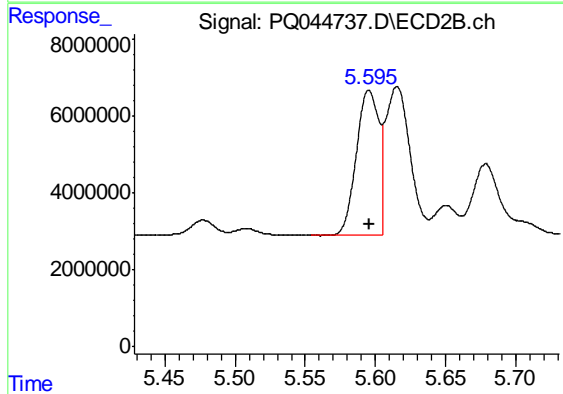
R.T.: 9.730 min  
Delta R.T.: 0.000 min  
Response: 409717112  
Conc: 50.00 ng/ml



#21 AR-1248-1

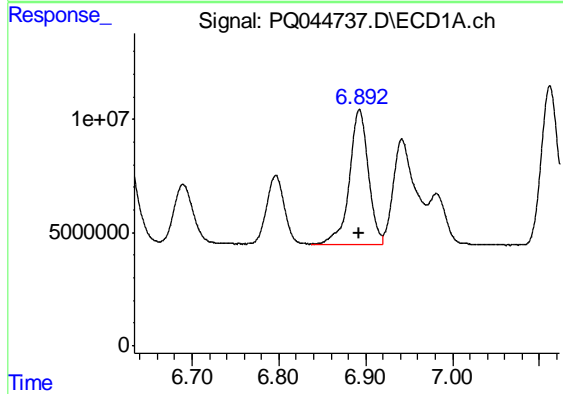
R.T.: 6.598 min  
 Delta R.T.: 0.000 min  
 Response: 64532647  
 Conc: 500.00 ng/ml

Instrument :  
 ECD\_Q  
 ClientSampleId :  
 AR1248ICC500



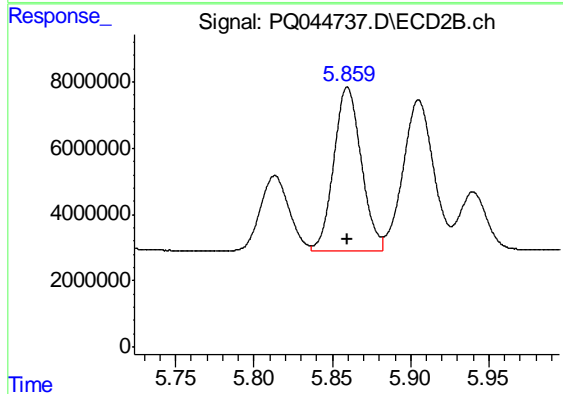
#21 AR-1248-1

R.T.: 5.595 min  
 Delta R.T.: 0.000 min  
 Response: 42025558  
 Conc: 500.00 ng/ml



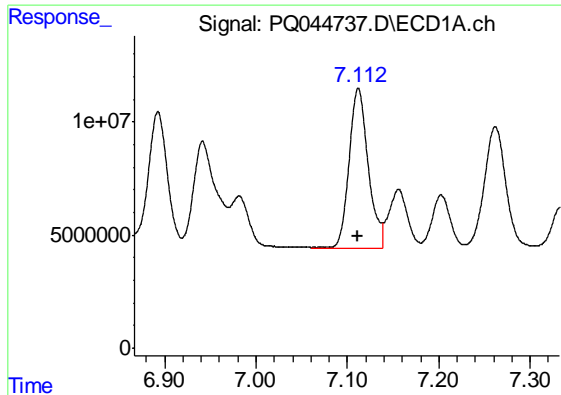
#22 AR-1248-2

R.T.: 6.893 min  
 Delta R.T.: 0.000 min  
 Response: 92082055  
 Conc: 500.00 ng/ml



#22 AR-1248-2

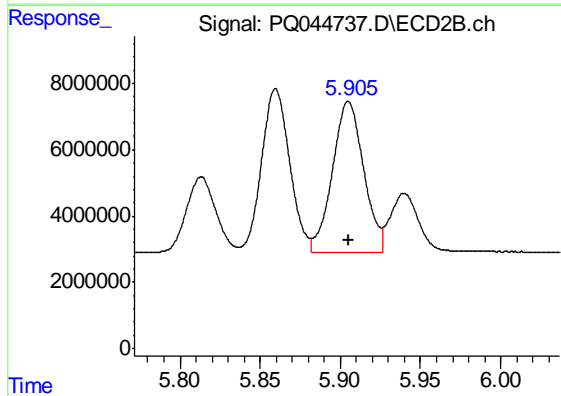
R.T.: 5.860 min  
 Delta R.T.: 0.000 min  
 Response: 60146802  
 Conc: 500.00 ng/ml



#23 AR-1248-3

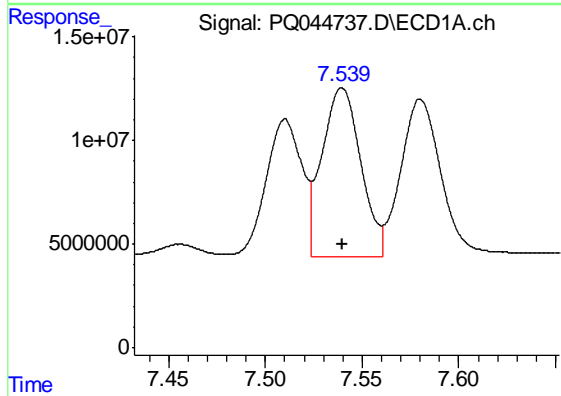
R.T.: 7.112 min  
 Delta R.T.: 0.000 min  
 Response: 101908199  
 Conc: 500.00 ng/ml

Instrument :  
 ECD\_Q  
 ClientSampleId :  
 AR1248ICC500



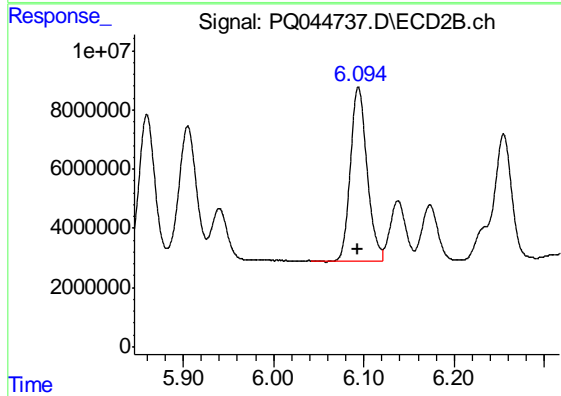
#23 AR-1248-3

R.T.: 5.905 min  
 Delta R.T.: 0.000 min  
 Response: 61506583  
 Conc: 500.00 ng/ml



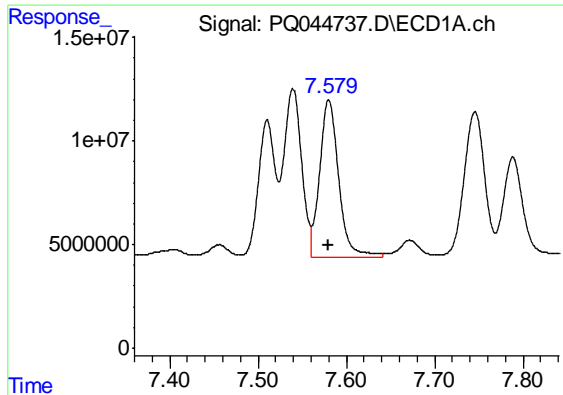
#24 AR-1248-4

R.T.: 7.540 min  
 Delta R.T.: 0.000 min  
 Response: 113526057  
 Conc: 500.00 ng/ml



#24 AR-1248-4

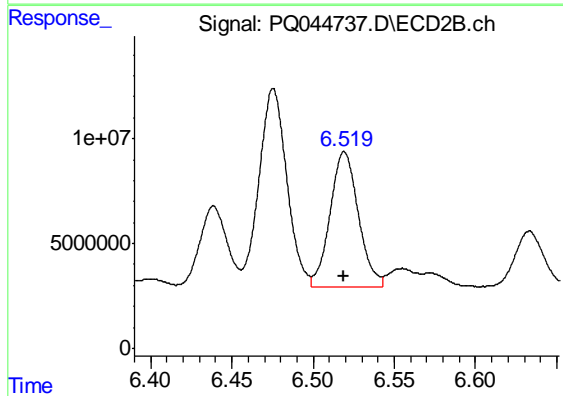
R.T.: 6.094 min  
 Delta R.T.: 0.000 min  
 Response: 74749834  
 Conc: 500.00 ng/ml



#25 AR-1248-5

R.T.: 7.580 min  
Delta R.T.: 0.000 min  
Response: 113091773  
Conc: 500.00 ng/ml

Instrument :  
ECD\_Q  
ClientSampleId :  
AR1248ICC500



#25 AR-1248-5

R.T.: 6.519 min  
Delta R.T.: 0.000 min  
Response: 78823101  
Conc: 500.00 ng/ml