

Data Path : Z:\pestpcbsrv\HPCHEM1\ECD_Q\Data\PQ110519\
 Data File : PQ044768.D
 Signal(s) : Signal #1: ECD1A.ch Signal #2: ECD2B.ch
 Acq On : 05 Nov 2019 20:03
 Operator : SM\AJ
 Sample : I.BLK
 Misc :
 ALS Vial : 2 Sample Multiplier: 1

Instrument :
 ECD_Q
 ClientSampleId :
 I.BLK

Integration File signal 1: autoint1.e
 Integration File signal 2: autoint2.e
 Quant Time: Nov 06 05:36:00 2019
 Quant Method : Z:\pestpcbsrv\HPCHEM1\ECD_Q\Method\PQ110519.M
 Quant Title : GC EXTRACTABLES
 QLast Update : Wed Nov 06 05:33:47 2019
 Response via : Initial Calibration
 Integrator: ChemStation

Volume Inj. : 2 µl
 Signal #1 Phase : ZB-MR1 Signal #2 Phase: ZB-MR2
 Signal #1 Info : 30Mx0.32mmx 0.50µ Signal #2 Info : 30M x 0.32mm x 0.25µm

Compound	RT#1	RT#2	Resp#1	Resp#2	ng/ml	ng/ml
----------	------	------	--------	--------	-------	-------

 System Monitoring Compounds

1) SA Tetrachlo...	5.108	4.312	91986902	69808231	17.590	17.174
2) SA Decachlor...	11.175	9.726	198.9E6	157.7E6	17.906	18.100

Target Compounds

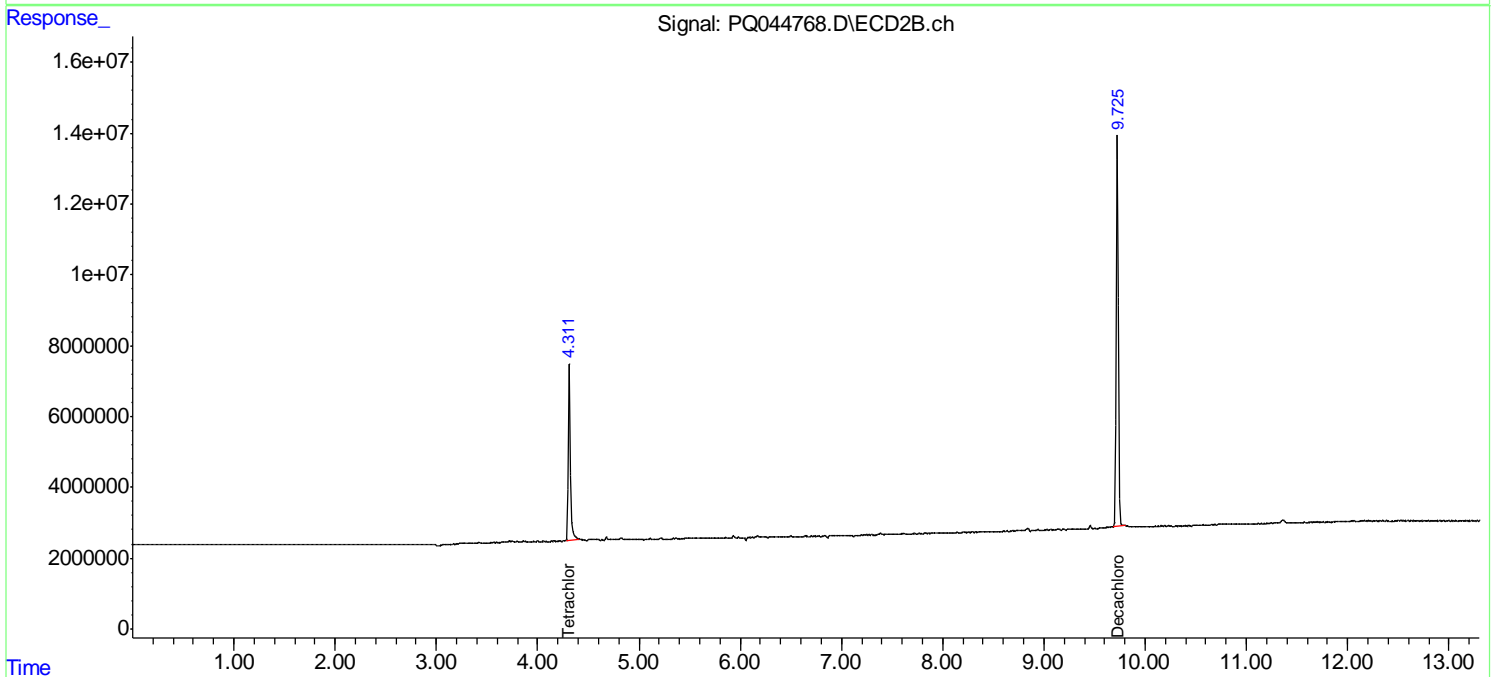
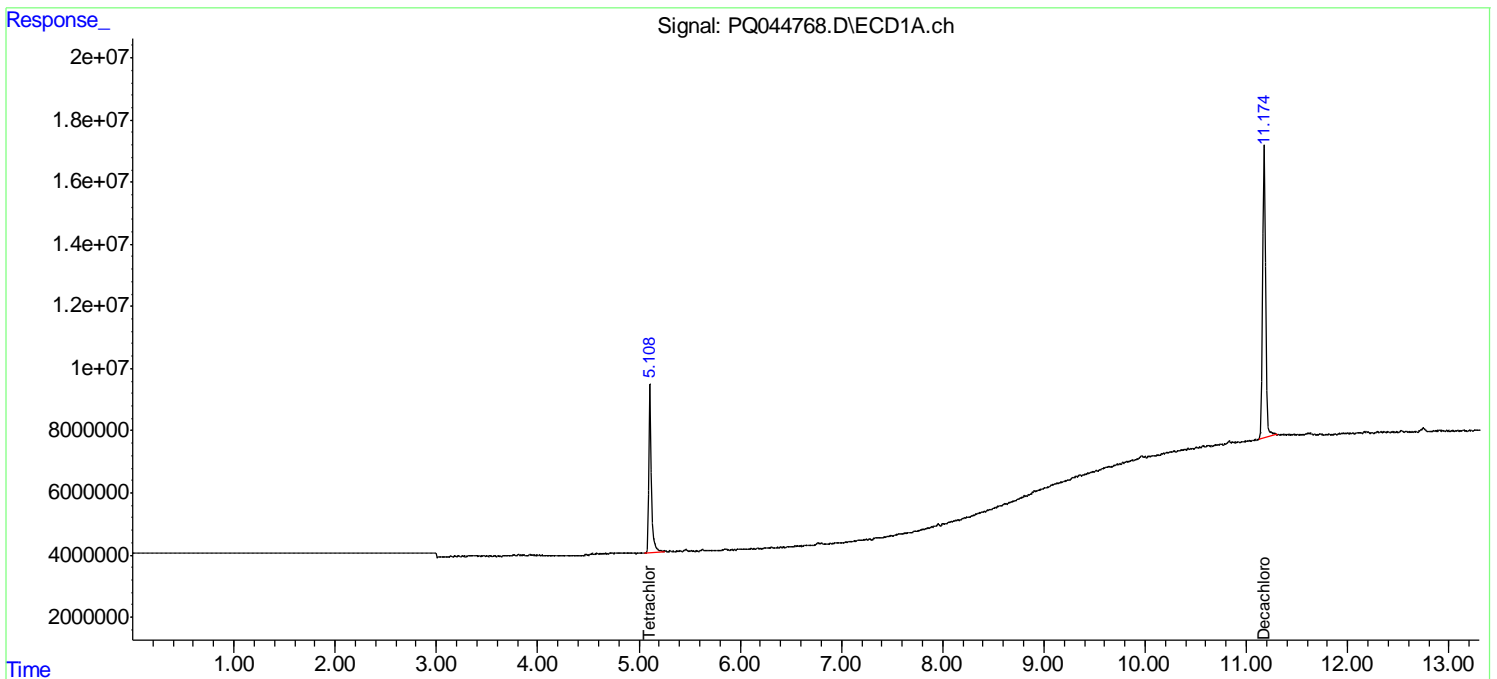
(f)=RT Delta > 1/2 Window (#)=Amounts differ by > 25% (m)=manual int.

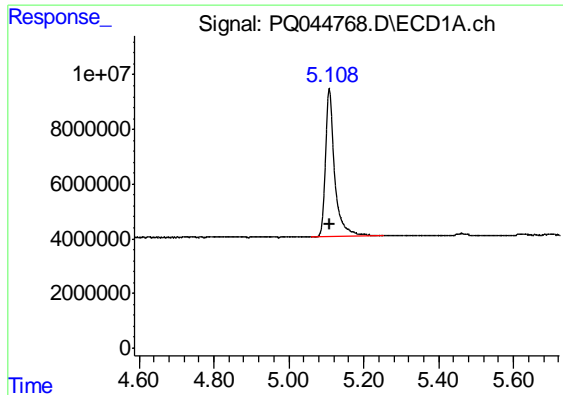
Data Path : Z:\pestpcbsrv\HPCHEM1\ECD_Q\Data\PQ110519\
 Data File : PQ044768.D
 Signal(s) : Signal #1: ECD1A.ch Signal #2: ECD2B.ch
 Acq On : 05 Nov 2019 20:03
 Operator : SM\AJ
 Sample : I.BLK
 Misc :
 ALS Vial : 2 Sample Multiplier: 1

Instrument :
 ECD_Q
 ClientSampleId :
 I.BLK

Integration File signal 1: autoint1.e
 Integration File signal 2: autoint2.e
 Quant Time: Nov 06 05:36:00 2019
 Quant Method : Z:\pestpcbsrv\HPCHEM1\ECD_Q\Method\PQ110519.M
 Quant Title : GC EXTRACTABLES
 QLast Update : Wed Nov 06 05:33:47 2019
 Response via : Initial Calibration
 Integrator: ChemStation

Volume Inj. : 2 µl
 Signal #1 Phase : ZB-MR1 Signal #2 Phase: ZB-MR2
 Signal #1 Info : 30Mx0.32mmx 0.50µ Signal #2 Info : 30M x 0.32mm x 0.25µm

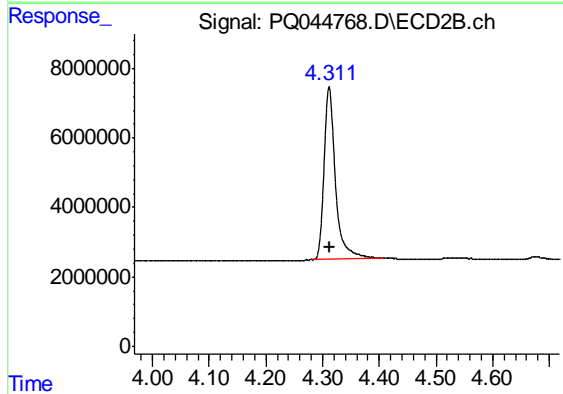




#1 Tetrachloro-m-xylene

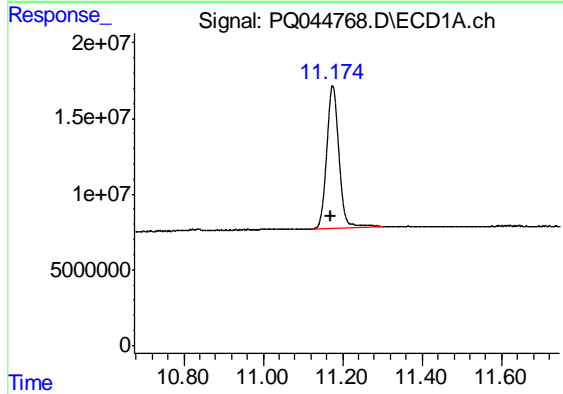
R.T.: 5.108 min
 Delta R.T.: 0.000 min
 Response: 91986902
 Conc: 17.59 ng/ml

Instrument :
 ECD_Q
 ClientSampled :
 I.BLK



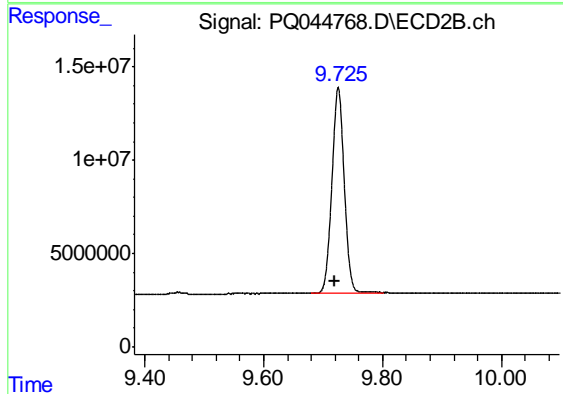
#1 Tetrachloro-m-xylene

R.T.: 4.312 min
 Delta R.T.: 0.000 min
 Response: 69808231
 Conc: 17.17 ng/ml



#2 Decachlorobiphenyl

R.T.: 11.175 min
 Delta R.T.: 0.003 min
 Response: 198927293
 Conc: 17.91 ng/ml



#2 Decachlorobiphenyl

R.T.: 9.726 min
 Delta R.T.: 0.006 min
 Response: 157653766
 Conc: 18.10 ng/ml