

Data Path : Z:\pestpcbsrv\HPCHEM1\ECD_Q\Data\PQ110519\
 Data File : PQ044772.D
 Signal(s) : Signal #1: ECD1A.ch Signal #2: ECD2B.ch
 Acq On : 05 Nov 2019 21:08
 Operator : SM\AJ
 Sample : AR1660ICC250
 Misc :
 ALS Vial : 6 Sample Multiplier: 1

Instrument :
 ECD_Q
 ClientSampleId :
 AR1660ICC250

Integration File signal 1: autoint1.e
 Integration File signal 2: autoint2.e
 Quant Time: Nov 06 00:51:03 2019
 Quant Method : Z:\pestpcbsrv\HPCHEM1\ECD_Q\Method\PQ110519.M
 Quant Title : GC EXTRACTABLES
 QLast Update : Wed Nov 06 00:49:46 2019
 Response via : Initial Calibration
 Integrator: ChemStation

Volume Inj. : 2 µl
 Signal #1 Phase : ZB-MR1 Signal #2 Phase: ZB-MR2
 Signal #1 Info : 30Mx0.32mmx 0.50µ Signal #2 Info : 30M x 0.32mm x 0.25µm

Compound	RT#1	RT#2	Resp#1	Resp#2	ng/ml	ng/ml

System Monitoring Compounds						
1) SA Tetrachlo...	5.109	4.312	138.2E6	107.3E6	26.261	25.869
2) SA Decachlor...	11.172	9.725	280.6E6	218.0E6	25.225	24.938
Target Compounds						
3) L1 AR-1016-1	6.423	5.592	44579037	42042696	271.367	269.863
4) L1 AR-1016-2	6.446	5.612	68411450	59398822	263.356	261.949
5) L1 AR-1016-3	6.512	5.809	41768754	31486847	265.056	263.048
6) L1 AR-1016-4	6.619	5.857	33862904	27605486	261.767	268.891
7) L1 AR-1016-5	6.933	6.091	37236251	36028117	262.857	267.222
31) L7 AR-1260-1	8.108	7.193	85713756	75322490	261.298	259.126
32) L7 AR-1260-2	8.372	7.389	104.6E6	89525193	257.748	268.767
33) L7 AR-1260-3	8.739	7.549	92061024	85938508	255.281	247.140
34) L7 AR-1260-4	8.973	8.033	111.9E6	77289424	254.653	242.400
35) L7 AR-1260-5	9.306	8.279	224.0E6	190.6E6	249.009	234.011

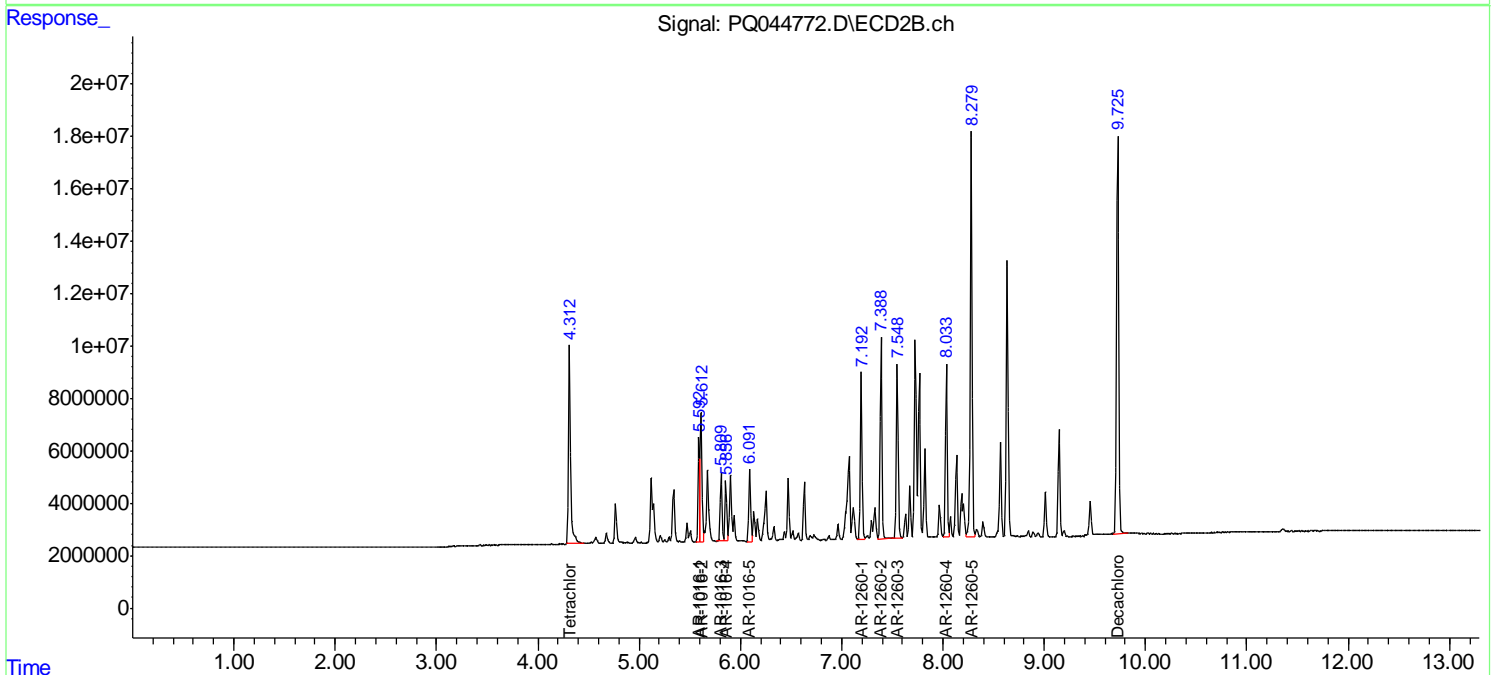
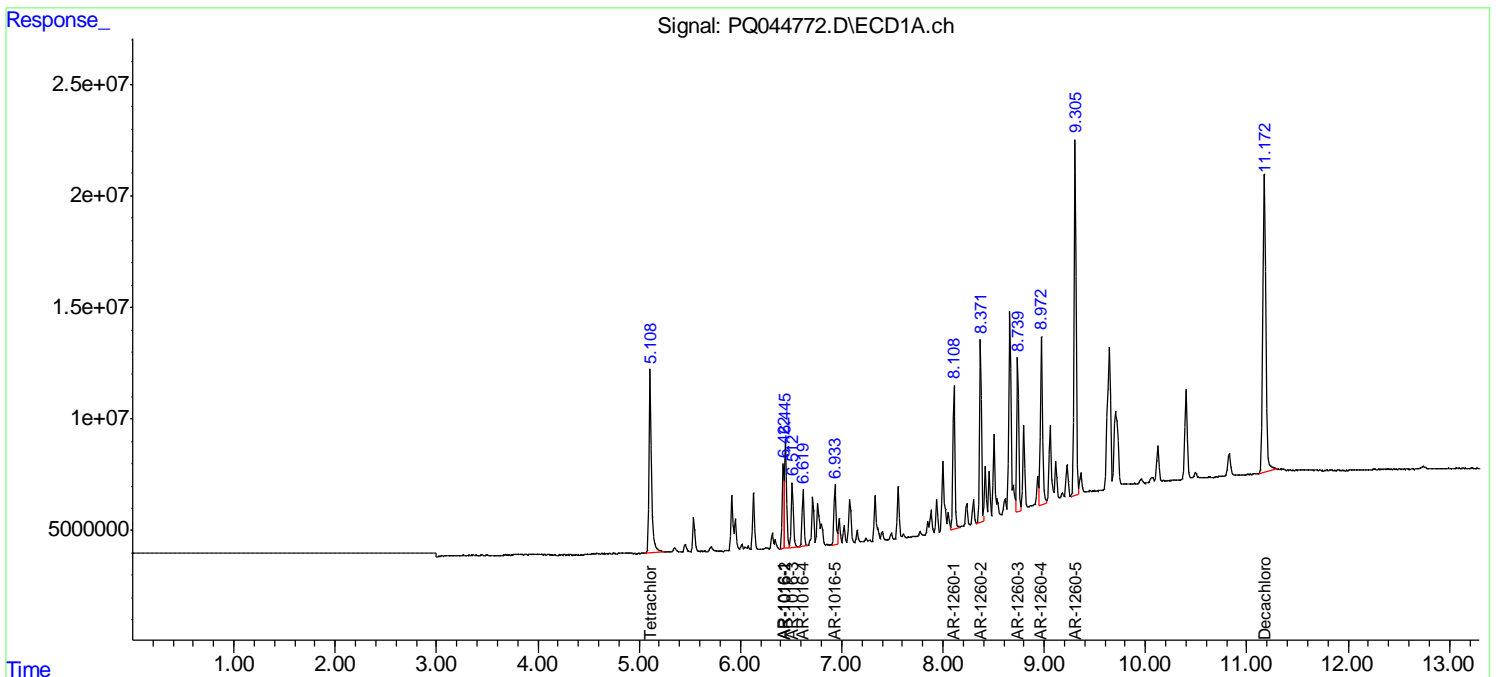
(f)=RT Delta > 1/2 Window (#)=Amounts differ by > 25% (m)=manual int.

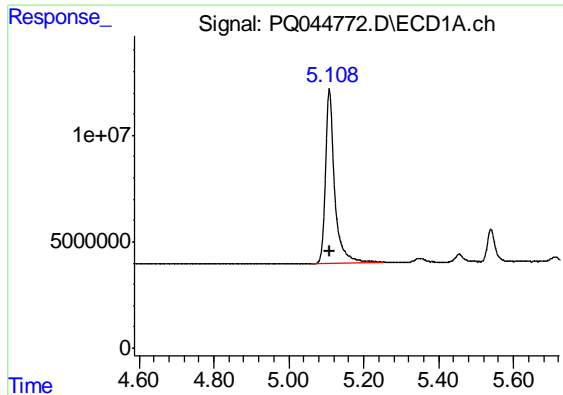
Data Path : Z:\pestpcbsrv\HPCHEM1\ECD_Q\Data\PQ110519\
Data File : PQ044772.D
Signal(s) : Signal #1: ECD1A.ch Signal #2: ECD2B.ch
Acq On : 05 Nov 2019 21:08
Operator : SM\AJ
Sample : AR1660ICC250
Misc :
ALS Vial : 6 Sample Multiplier: 1

Instrument :
ECD_Q
Client Sampled :
AR1660ICC250

Integration File signal 1: autoint1.e
Integration File signal 2: autoint2.e
Quant Time: Nov 06 00:51:03 2019
Quant Method : Z:\pestpcbsrv\HPCHEM1\ECD_Q\Method\PQ110519.M
Quant Title : GC EXTRACTABLES
QLast Update : Wed Nov 06 00:49:46 2019
Response via : Initial Calibration
Integrator: ChemStation

Volume Inj. : 2 µl
Signal #1 Phase : ZB-MR1 Signal #2 Phase: ZB-MR2
Signal #1 Info : 30Mx0.32mmx 0.50µ Signal #2 Info : 30M x 0.32mm x 0.25µm

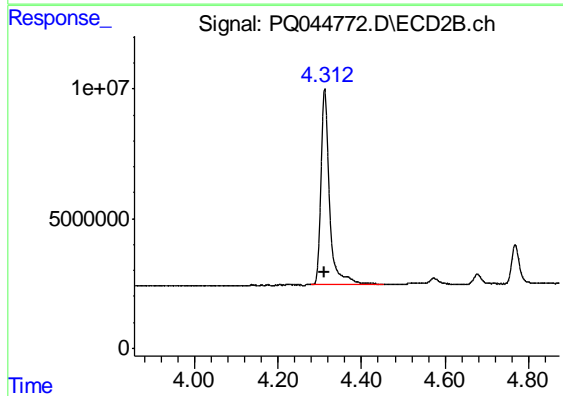




#1 Tetrachloro-m-xylene

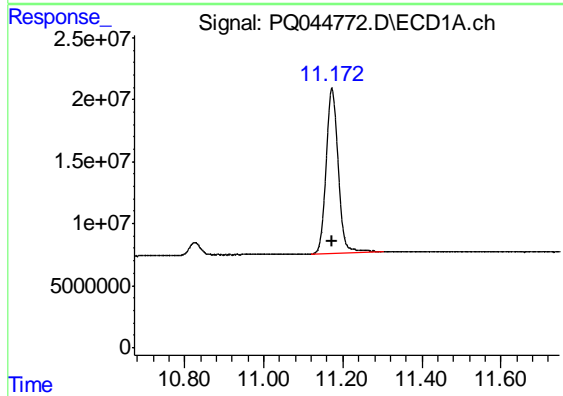
R.T.: 5.109 min
Delta R.T.: 0.000 min
Response: 138238311
Conc: 26.26 ng/ml

Instrument :
ECD_Q
ClientSampleId :
AR1660ICC250



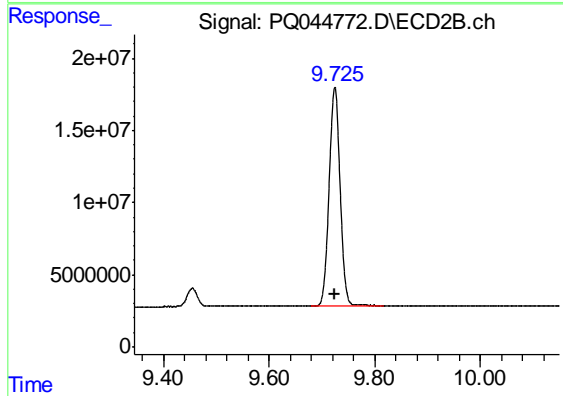
#1 Tetrachloro-m-xylene

R.T.: 4.312 min
Delta R.T.: 0.000 min
Response: 107328039
Conc: 25.87 ng/ml



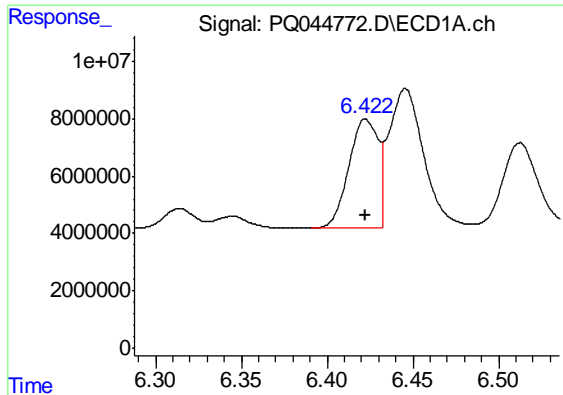
#2 Decachlorobiphenyl

R.T.: 11.172 min
Delta R.T.: 0.000 min
Response: 280611868
Conc: 25.22 ng/ml



#2 Decachlorobiphenyl

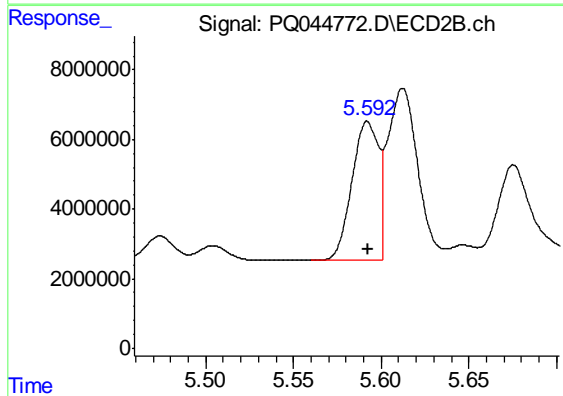
R.T.: 9.725 min
Delta R.T.: 0.000 min
Response: 217999469
Conc: 24.94 ng/ml



#3 AR-1016-1

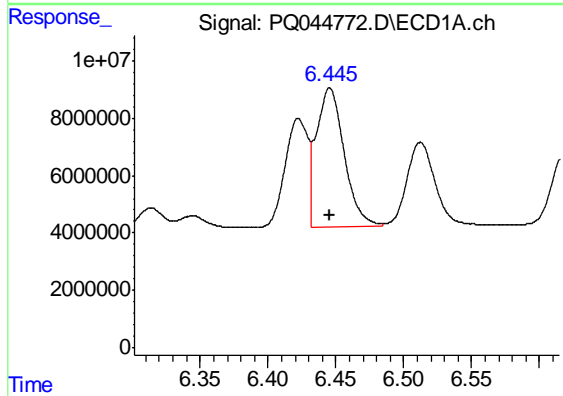
R.T.: 6.423 min
 Delta R.T.: 0.000 min
 Response: 44579037
 Conc: 271.37 ng/ml

Instrument :
 ECD_Q
 ClientSampleId :
 AR1660ICC250



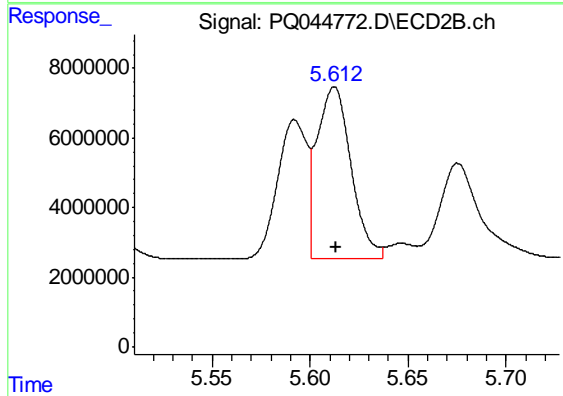
#3 AR-1016-1

R.T.: 5.592 min
 Delta R.T.: 0.000 min
 Response: 42042696
 Conc: 269.86 ng/ml



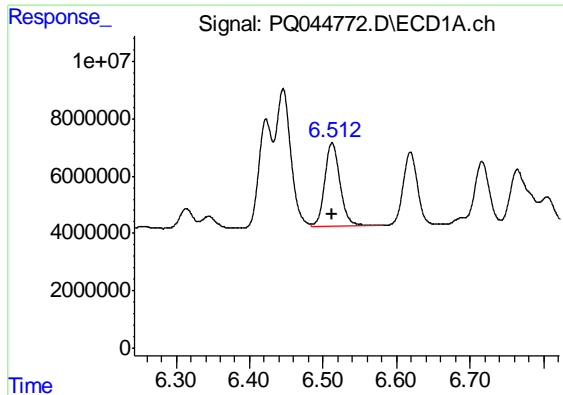
#4 AR-1016-2

R.T.: 6.446 min
 Delta R.T.: 0.000 min
 Response: 68411450
 Conc: 263.36 ng/ml



#4 AR-1016-2

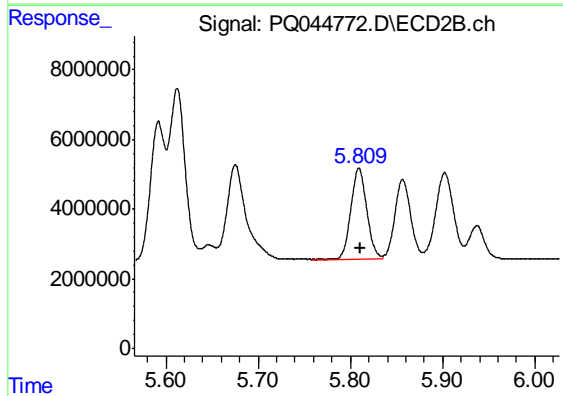
R.T.: 5.612 min
 Delta R.T.: 0.000 min
 Response: 59398822
 Conc: 261.95 ng/ml



#5 AR-1016-3

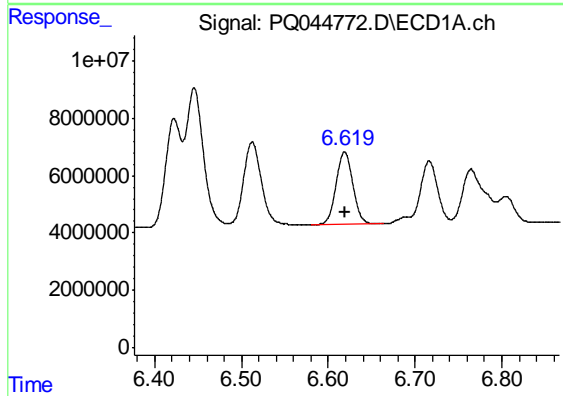
R.T.: 6.512 min
 Delta R.T.: 0.000 min
 Response: 41768754
 Conc: 265.06 ng/ml

Instrument :
 ECD_Q
 ClientSampleId :
 AR1660ICC250



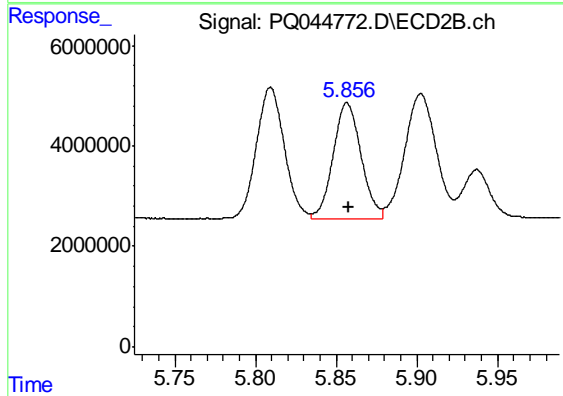
#5 AR-1016-3

R.T.: 5.809 min
 Delta R.T.: -0.001 min
 Response: 31486847
 Conc: 263.05 ng/ml



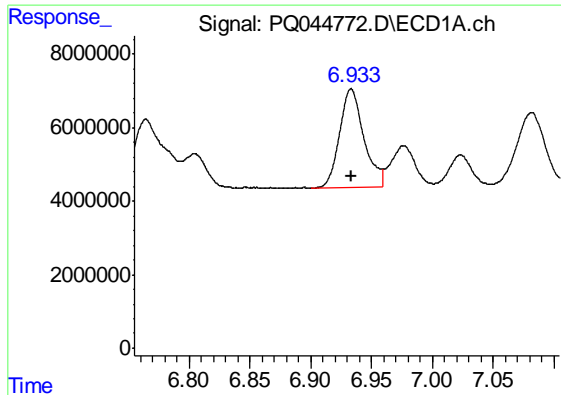
#6 AR-1016-4

R.T.: 6.619 min
 Delta R.T.: 0.000 min
 Response: 33862904
 Conc: 261.77 ng/ml



#6 AR-1016-4

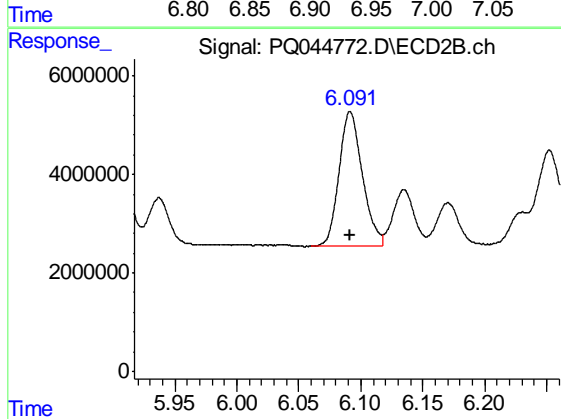
R.T.: 5.857 min
 Delta R.T.: 0.000 min
 Response: 27605486
 Conc: 268.89 ng/ml



#7 AR-1016-5

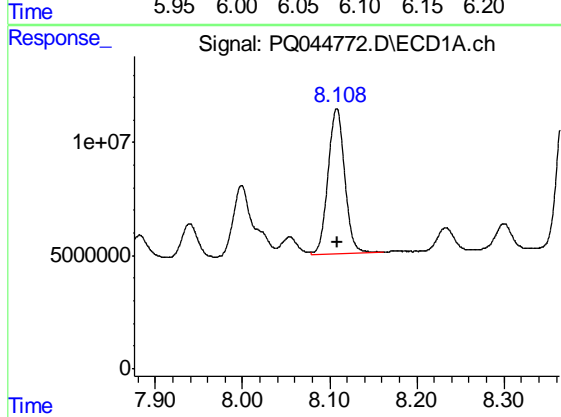
R.T.: 6.933 min
 Delta R.T.: 0.000 min
 Response: 37236251
 Conc: 262.86 ng/ml

Instrument :
 ECD_Q
 ClientSampleId :
 AR1660ICC250



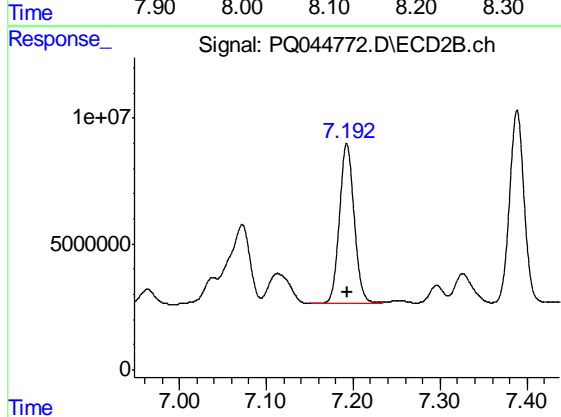
#7 AR-1016-5

R.T.: 6.091 min
 Delta R.T.: 0.000 min
 Response: 36028117
 Conc: 267.22 ng/ml



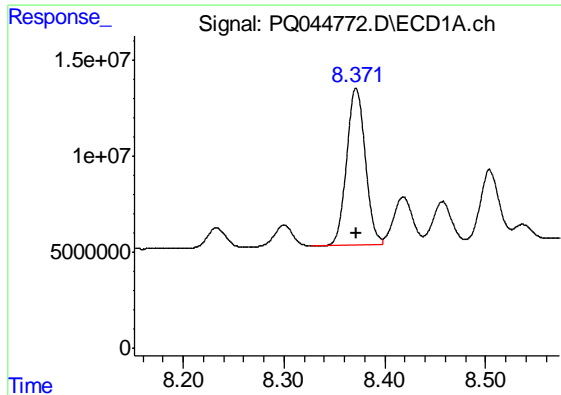
#31 AR-1260-1

R.T.: 8.108 min
 Delta R.T.: 0.000 min
 Response: 85713756
 Conc: 261.30 ng/ml



#31 AR-1260-1

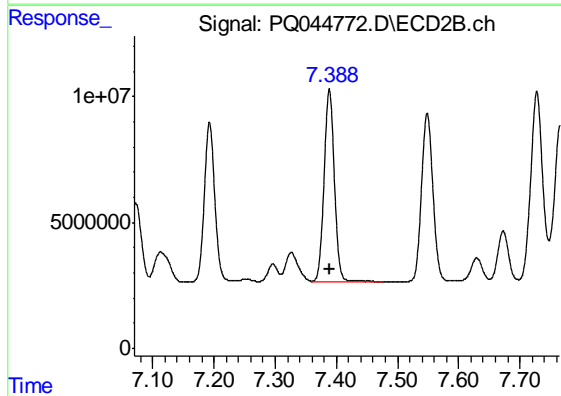
R.T.: 7.193 min
 Delta R.T.: -0.001 min
 Response: 75322490
 Conc: 259.13 ng/ml



#32 AR-1260-2

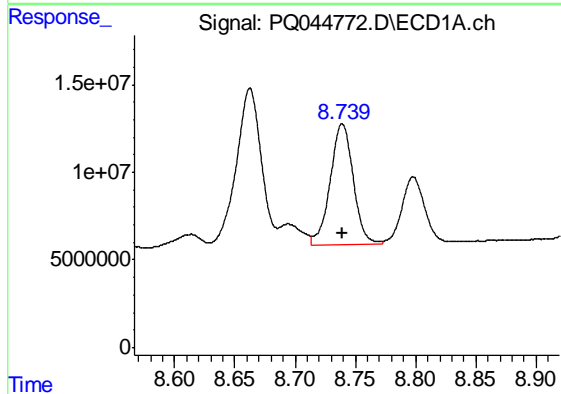
R.T.: 8.372 min
Delta R.T.: 0.000 min
Response: 104625350
Conc: 257.75 ng/ml

Instrument :
ECD_Q
ClientSampleId :
AR1660ICC250



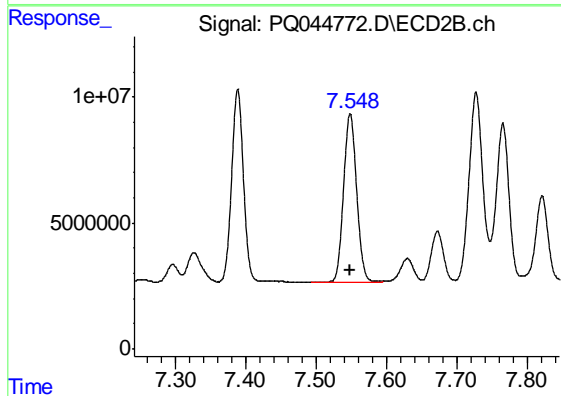
#32 AR-1260-2

R.T.: 7.389 min
Delta R.T.: 0.000 min
Response: 89525193
Conc: 268.77 ng/ml



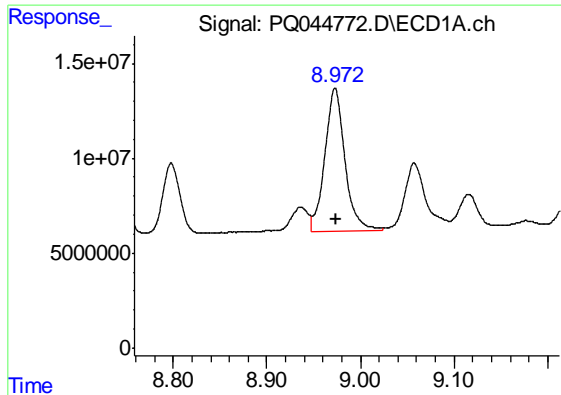
#33 AR-1260-3

R.T.: 8.739 min
Delta R.T.: 0.000 min
Response: 92061024
Conc: 255.28 ng/ml



#33 AR-1260-3

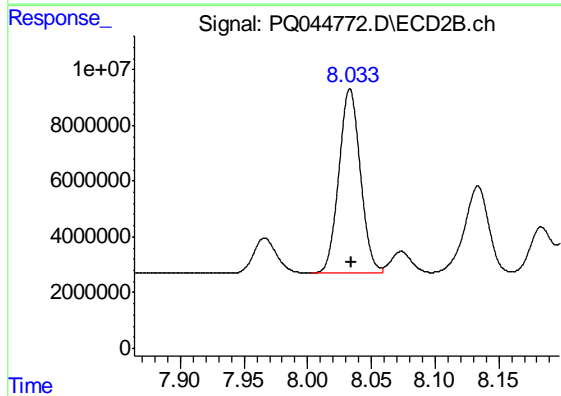
R.T.: 7.549 min
Delta R.T.: 0.000 min
Response: 85938508
Conc: 247.14 ng/ml



#34 AR-1260-4

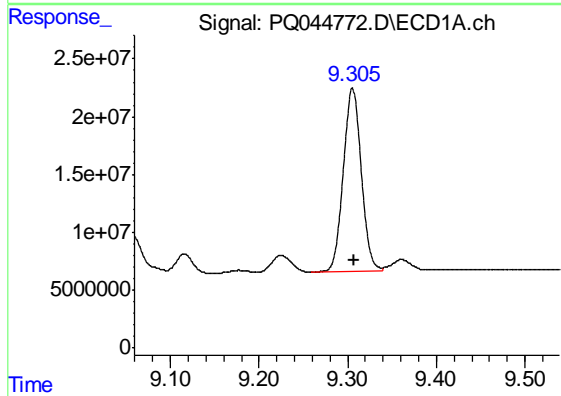
R.T.: 8.973 min
 Delta R.T.: -0.001 min
 Response: 111882784
 Conc: 254.65 ng/ml

Instrument :
 ECD_Q
 ClientSampleId :
 AR1660ICC250



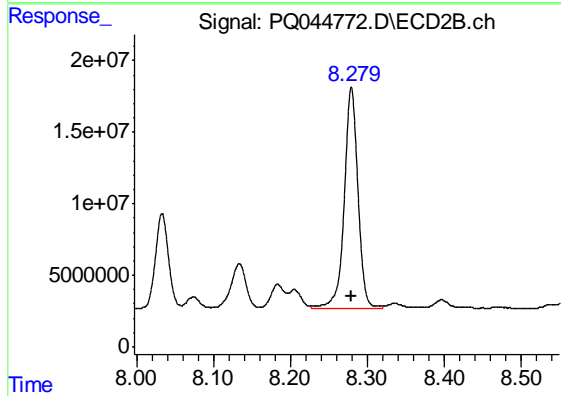
#34 AR-1260-4

R.T.: 8.033 min
 Delta R.T.: 0.000 min
 Response: 77289424
 Conc: 242.40 ng/ml



#35 AR-1260-5

R.T.: 9.306 min
 Delta R.T.: -0.001 min
 Response: 224026666
 Conc: 249.01 ng/ml



#35 AR-1260-5

R.T.: 8.279 min
 Delta R.T.: 0.000 min
 Response: 190578321
 Conc: 234.01 ng/ml