

Data Path : Z:\pestpcbsrv\HPCHEM1\ECD_Q\Data\PQ110722\
 Data File : PQ059956.D
 Signal(s) : Signal #1: ECD1A.ch Signal #2: ECD2B.ch
 Acq On : 07 Nov 2022 18:39
 Operator : YP\AJ
 Sample : N5415-15MS
 Misc :
 ALS Vial : 21 Sample Multiplier: 1

Instrument :
 ECD_Q
 ClientSampleId :

Integration File signal 1: autoint1.e
 Integration File signal 2: autoint2.e
 Quant Time: Nov 07 22:13:49 2022
 Quant Method : Z:\pestpcbsrv\HPCHEM1\ECD_Q\Method\PQ110122.M
 Quant Title : GC EXTRACTABLES
 QLast Update : Tue Nov 01 17:05:38 2022
 Response via : Initial Calibration
 Integrator: ChemStation

Volume Inj. : 2 µl
 Signal #1 Phase : ZB-MR1 Signal #2 Phase: ZB-MR2
 Signal #1 Info : 30Mx0.32mmx 0.50µ Signal #2 Info : 30M x 0.32mm x 0.25µm

Compound	RT#1	RT#2	Resp#1	Resp#2	ng/ml	ng/ml
System Monitoring Compounds						
1) SA Tetrachlo...	3.458	2.807	227.8E6	184.0E6	18.881	23.191
2) SA Decachlor...	8.633	7.571	116.7E6	147.0E6	15.993	20.212 #
Target Compounds						
3) L1 AR-1016-1	4.555	3.810	184.6E6	148.3E6	424.782	559.632 #
4) L1 AR-1016-2	4.575	3.826	273.9E6	219.3E6	436.310	556.571 #
5) L1 AR-1016-3	4.633	3.987	164.4E6	115.3E6	424.601	563.403 #
6) L1 AR-1016-4	4.725	4.034	138.2E6	88946537	429.200	558.809 #
7) L1 AR-1016-5	5.010	4.230	129.5E6	114.4E6	423.230	555.401 #
8) L2 AR-1221-1	3.653	3.007	20367170	14402735	139.750	157.164
9) L2 AR-1221-2	3.735	3.085	23486714	18514579	213.739	271.349 #
10) L2 AR-1221-3	3.805	3.154	96775272	82415922	298.838	387.272 #
11) L3 AR-1232-1	3.805	3.154	96775272	82415922	393.188	508.233 #
12) L3 AR-1232-2	4.298	3.826	141.7E6	219.3E6	933.315	1273.494 #
13) L3 AR-1232-3	4.575	3.987	273.9E6	115.3E6	1010.061	1288.305 #
14) L3 AR-1232-4	4.725	4.071	138.2E6	102.5E6	977.023	1393.053 #
15) L3 AR-1232-5	4.820	4.230	104.7E6	114.4E6	1056.062	1297.057
16) L4 AR-1242-1	4.555	3.810	184.6E6	148.3E6	548.677	720.607 #
17) L4 AR-1242-2	4.575	3.826	273.9E6	219.3E6	559.758	713.579 #
18) L4 AR-1242-3	4.633	3.987	164.4E6	115.3E6	547.461	722.752 #
19) L4 AR-1242-4	4.725	4.071	138.2E6	102.5E6	548.397	698.885 #
20) L4 AR-1242-5	5.438	4.565	21635602	90087582	81.313	439.305 #
21) L5 AR-1248-1	4.555	3.810	184.6E6	148.3E6	723.639	935.071 #
22) L5 AR-1248-2	4.820	4.034	104.7E6	88946537	320.354	412.507 #
23) L5 AR-1248-3	5.010	4.071	129.5E6	102.5E6	330.129	487.003 #
24) L5 AR-1248-4	5.402	4.230	21457898	114.4E6	48.468	430.049 #
25) L5 AR-1248-5	5.438	4.604	21635602	15113026	49.582	57.614
26) L6 AR-1254-1	5.376	4.565	98883341	90087582	218.758	221.459
27) L6 AR-1254-2	5.592	4.711	106.7E6	85742799	153.688	238.378 #
28) L6 AR-1254-3	5.946	5.094	58112747	42135343	79.702	73.423
29) L6 AR-1254-4	6.228	5.319	36570887	18380719	67.998	50.404 #
30) L6 AR-1254-5	6.642	5.723	322.6E6	316.9E6	543.257	591.382
31) L7 AR-1260-1	6.111	5.222	227.9E6	212.5E6	407.396	536.542 #
32) L7 AR-1260-2	6.370	5.409	270.4E6	256.8E6	403.882	533.083 #
33) L7 AR-1260-3	6.723	5.552	168.4E6	244.8E6	395.416	528.002 #
34) L7 AR-1260-4	6.941	6.013	189.5E6	177.3E6	378.600	518.502 #
35) L7 AR-1260-5	7.251	6.257	353.2E6	427.9E6	361.279	514.798 #
36) L8 AR-1262-1	6.723	5.765	168.4E6	180.5E6	253.655	352.901 #
37) L8 AR-1262-2	7.251	6.257	353.2E6	427.9E6	317.479	451.354 #
38) L8 AR-1262-3	7.531	6.535	221.0E6	87520834	307.641	236.462
39) L8 AR-1262-4	7.585	6.593	72537466	313.6E6	130.588	442.836 #
40) L8 AR-1262-5	8.105	7.086	78725340	100.1E6	227.197	300.629 #
41) L9 AR-1268-1	7.531f	6.535	221.0E6	87520834	176.178	79.104 #

Data Path : Z:\pestpcbsrv\HPCHEM1\ECD_Q\Data\PQ110722\
 Data File : PQ059956.D
 Signal(s) : Signal #1: ECD1A.ch Signal #2: ECD2B.ch
 Acq On : 07 Nov 2022 18:39
 Operator : YP\AJ
 Sample : N5415-15MS
 Misc :
 ALS Vial : 21 Sample Multiplier: 1

Instrument :
 ECD_Q
 ClientSampleId :

Integration File signal 1: autoint1.e
 Integration File signal 2: autoint2.e
 Quant Time: Nov 07 22:13:49 2022
 Quant Method : Z:\pestpcbsrv\HPCHEM1\ECD_Q\Method\PQ110122.M
 Quant Title : GC EXTRACTABLES
 QLast Update : Tue Nov 01 17:05:38 2022
 Response via : Initial Calibration
 Integrator: ChemStation

Volume Inj. : 2 µl
 Signal #1 Phase : ZB-MR1 Signal #2 Phase: ZB-MR2
 Signal #1 Info : 30Mx0.32mmx 0.50µ Signal #2 Info : 30M x 0.32mm x 0.25µm

	Compound	RT#1	RT#2	Resp#1	Resp#2	ng/ml	ng/ml
42)	L9 AR-1268-2	7.599	6.593	54013740	313.6E6	47.010	306.717 #
43)	L9 AR-1268-3	7.786	6.798	8036762	9461273	8.680	10.840
44)	L9 AR-1268-4	8.105	7.086	78725340	100.1E6	202.478	265.731 #
45)	L9 AR-1268-5	8.399f	7.354	29941313	38772408	11.358	13.915

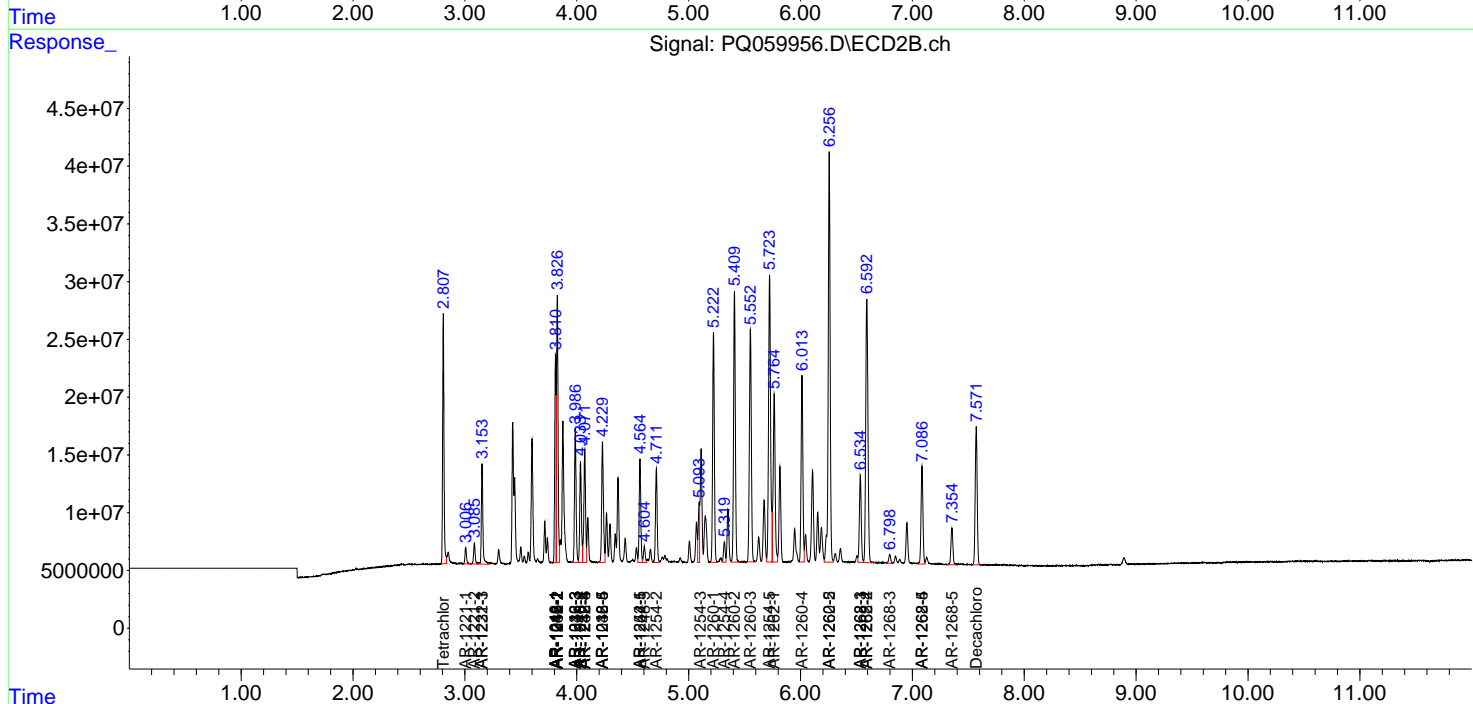
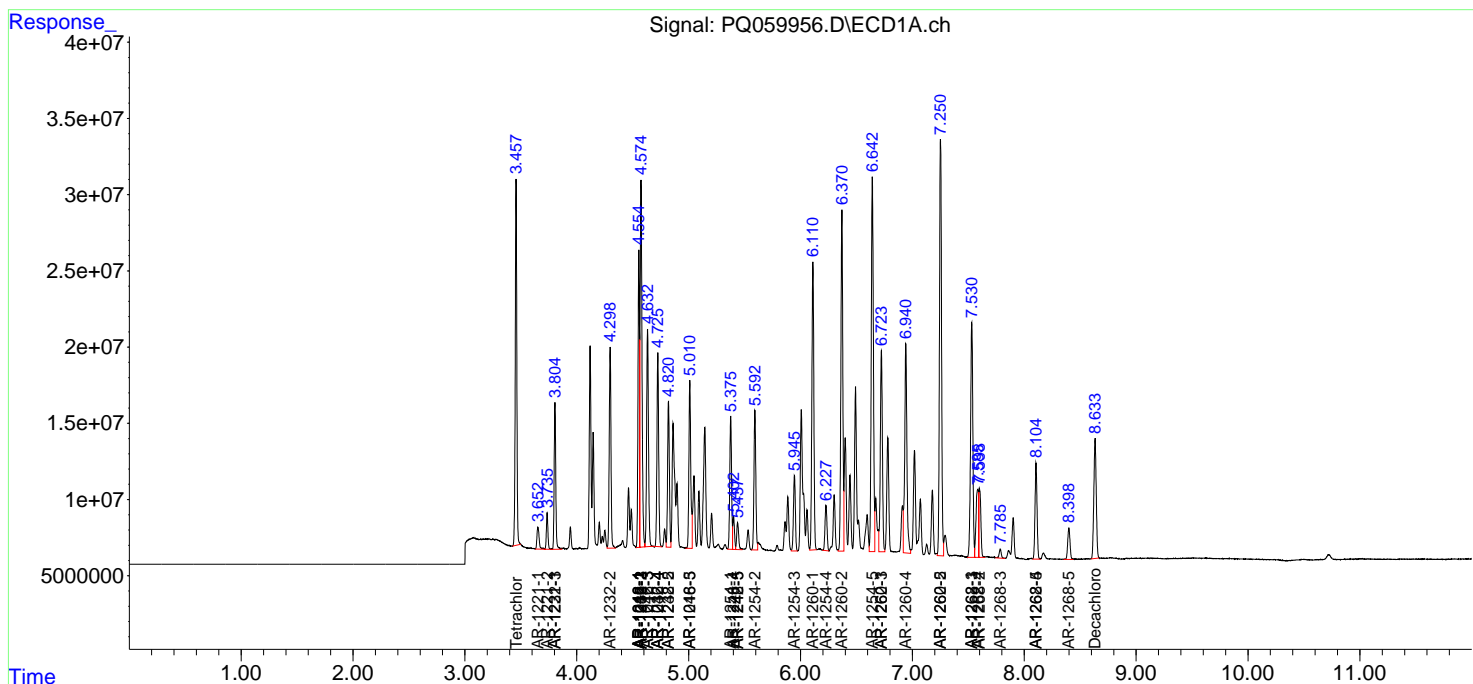
(f)=RT Delta > 1/2 Window (#)=Amounts differ by > 25% (m)=manual int.

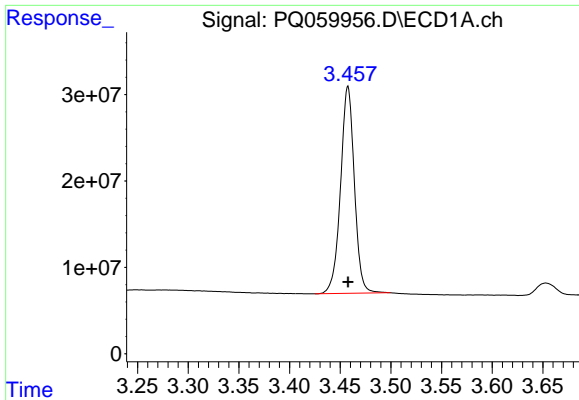
Data Path : Z:\pestpcbsrv\HPCHEM1\ECD_Q\Data\PQ110722\
 Data File : PQ059956.D
 Signal(s) : Signal #1: ECD1A.ch Signal #2: ECD2B.ch
 Acq On : 07 Nov 2022 18:39
 Operator : YP\AJ
 Sample : N5415-15MS
 Misc :
 ALS Vial : 21 Sample Multiplier: 1

Instrument :
 ECD_Q
 ClientSampleId :

Integration File signal 1: autoint1.e
 Integration File signal 2: autoint2.e
 Quant Time: Nov 07 22:13:49 2022
 Quant Method : Z:\pestpcbsrv\HPCHEM1\ECD_Q\Method\PQ110122.M
 Quant Title : GC EXTRACTABLES
 QLast Update : Tue Nov 01 17:05:38 2022
 Response via : Initial Calibration
 Integrator: ChemStation

Volume Inj. : 2 µl
 Signal #1 Phase : ZB-MR1 Signal #2 Phase: ZB-MR2
 Signal #1 Info : 30Mx0.32mmx 0.50µ Signal #2 Info : 30M x 0.32mm x 0.25µm

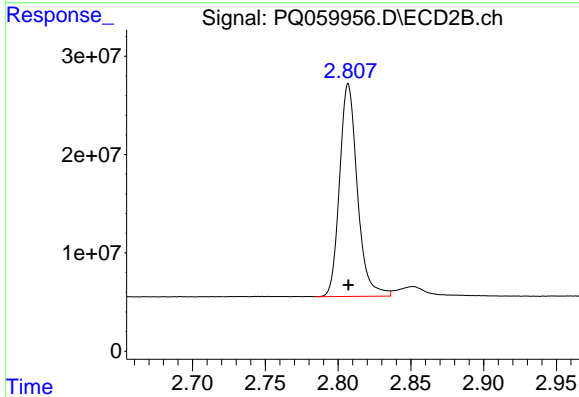




#1 Tetrachloro-m-xylene

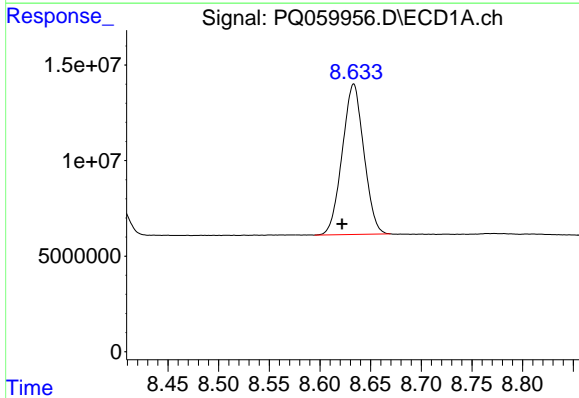
R.T.: 3.458 min
 Delta R.T.: 0.000 min
 Response: 227808540
 Conc: 18.88 ng/ml

Instrument :
 ECD_Q
 ClientSampleId :



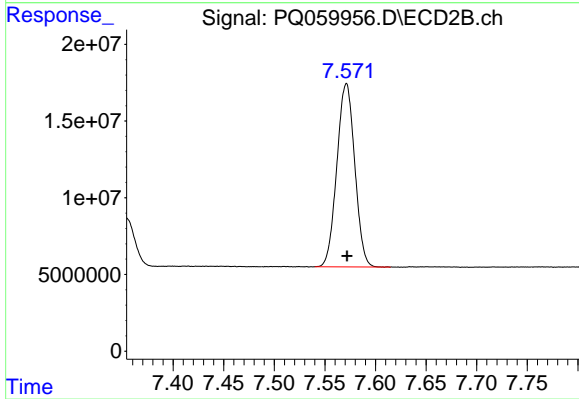
#1 Tetrachloro-m-xylene

R.T.: 2.807 min
 Delta R.T.: 0.000 min
 Response: 184002609
 Conc: 23.19 ng/ml



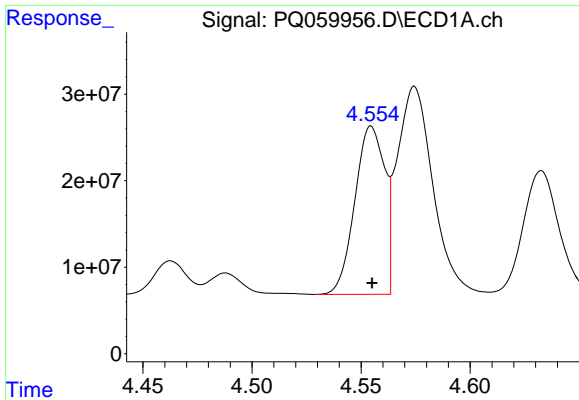
#2 Decachlorobiphenyl

R.T.: 8.633 min
 Delta R.T.: 0.011 min
 Response: 116691181
 Conc: 15.99 ng/ml



#2 Decachlorobiphenyl

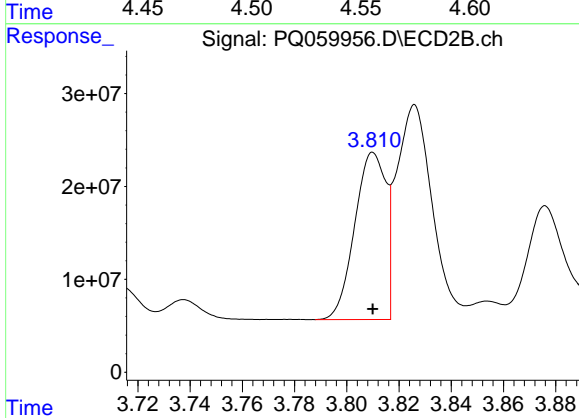
R.T.: 7.571 min
 Delta R.T.: 0.000 min
 Response: 147024894
 Conc: 20.21 ng/ml



#3 AR-1016-1

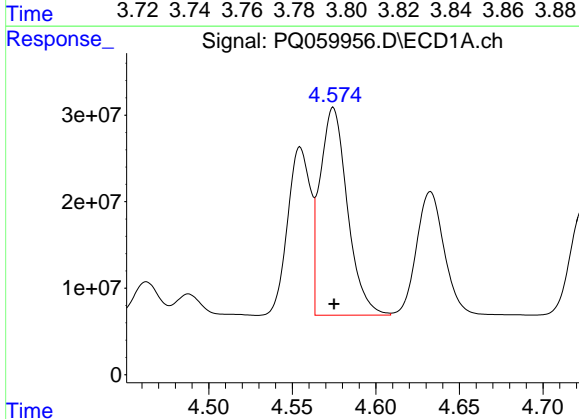
R.T.: 4.555 min
 Delta R.T.: 0.000 min
 Response: 184561464
 Conc: 424.78 ng/ml

Instrument :
 ECD_Q
 ClientSampleId :



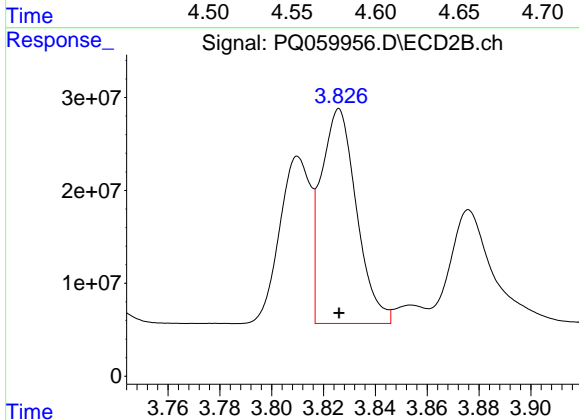
#3 AR-1016-1

R.T.: 3.810 min
 Delta R.T.: 0.000 min
 Response: 148318698
 Conc: 559.63 ng/ml



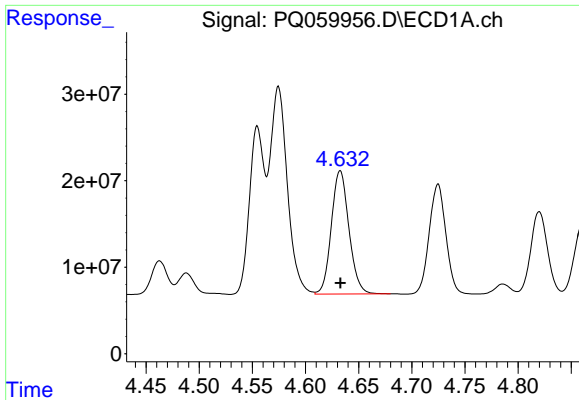
#4 AR-1016-2

R.T.: 4.575 min
 Delta R.T.: 0.000 min
 Response: 273913425
 Conc: 436.31 ng/ml



#4 AR-1016-2

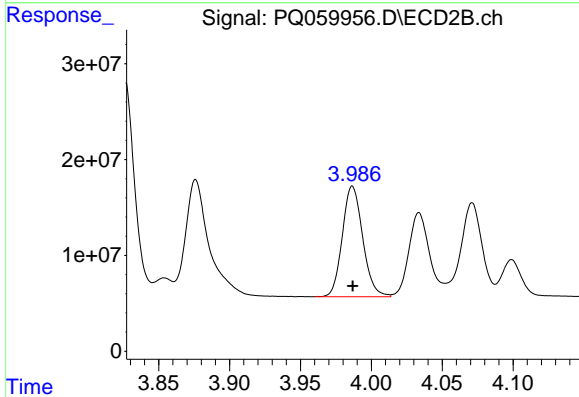
R.T.: 3.826 min
 Delta R.T.: 0.000 min
 Response: 219311961
 Conc: 556.57 ng/ml



#5 AR-1016-3

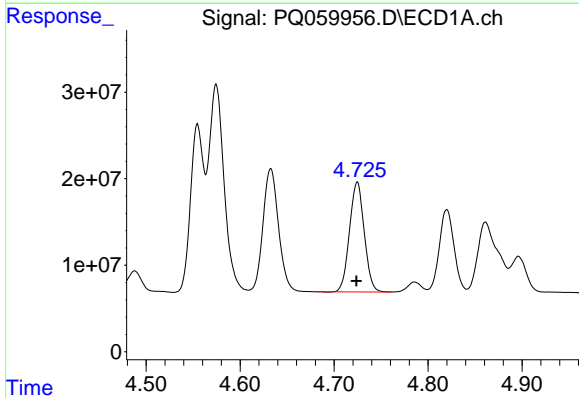
R.T.: 4.633 min
 Delta R.T.: 0.000 min
 Response: 164388891
 Conc: 424.60 ng/ml

Instrument :
 ECD_Q
 ClientSampleId :



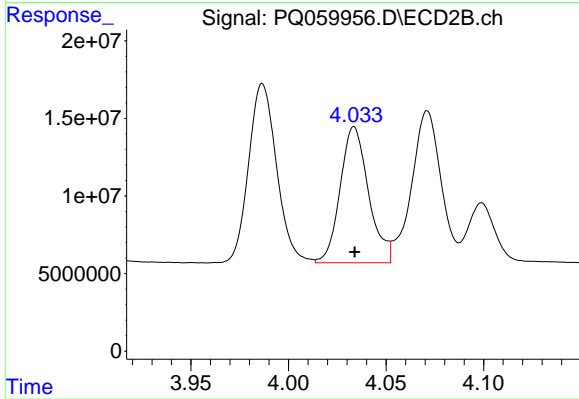
#5 AR-1016-3

R.T.: 3.987 min
 Delta R.T.: 0.000 min
 Response: 115334111
 Conc: 563.40 ng/ml



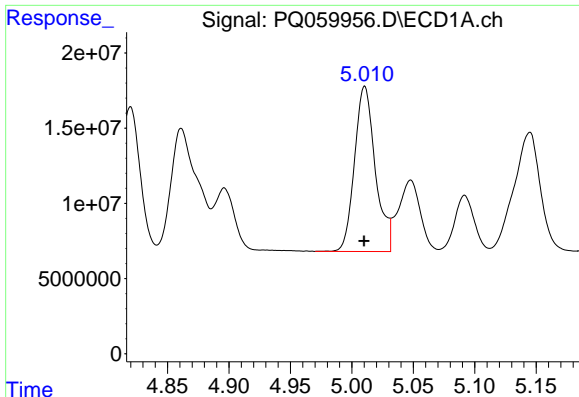
#6 AR-1016-4

R.T.: 4.725 min
 Delta R.T.: 0.000 min
 Response: 138202929
 Conc: 429.20 ng/ml



#6 AR-1016-4

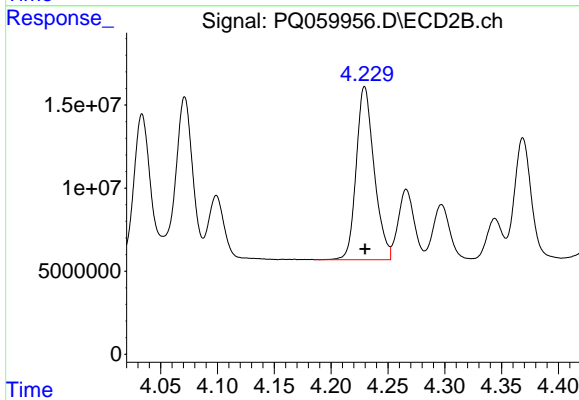
R.T.: 4.034 min
 Delta R.T.: 0.000 min
 Response: 88946537
 Conc: 558.81 ng/ml



#7 AR-1016-5

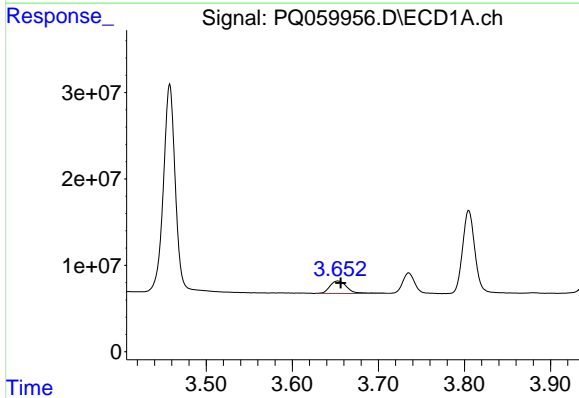
R.T.: 5.010 min
 Delta R.T.: 0.000 min
 Response: 129538102
 Conc: 423.23 ng/ml

Instrument :
 ECD_Q
 ClientSampleId :



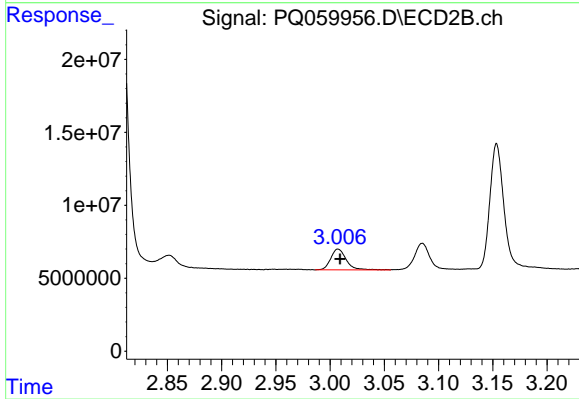
#7 AR-1016-5

R.T.: 4.230 min
 Delta R.T.: 0.000 min
 Response: 114437617
 Conc: 555.40 ng/ml



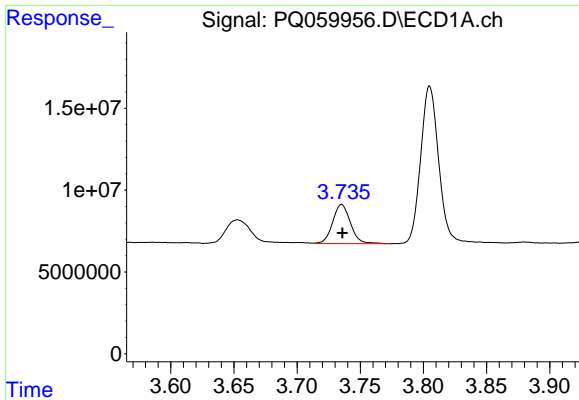
#8 AR-1221-1

R.T.: 3.653 min
 Delta R.T.: -0.004 min
 Response: 20367170
 Conc: 139.75 ng/ml



#8 AR-1221-1

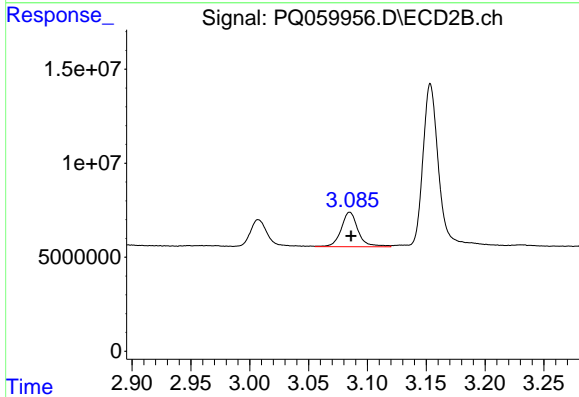
R.T.: 3.007 min
 Delta R.T.: -0.002 min
 Response: 14402735
 Conc: 157.16 ng/ml



#9 AR-1221-2

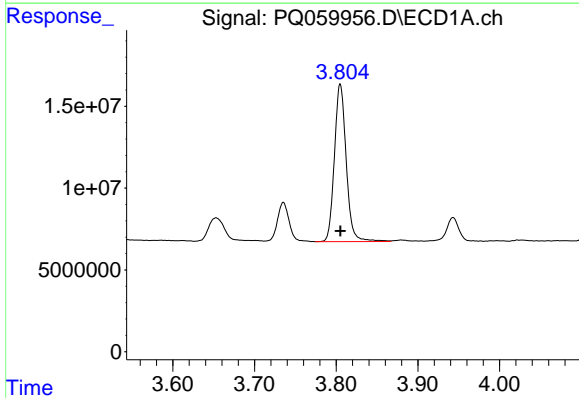
R.T.: 3.735 min
 Delta R.T.: 0.000 min
 Response: 23486714
 Conc: 213.74 ng/ml

Instrument :
 ECD_Q
 ClientSampleId :



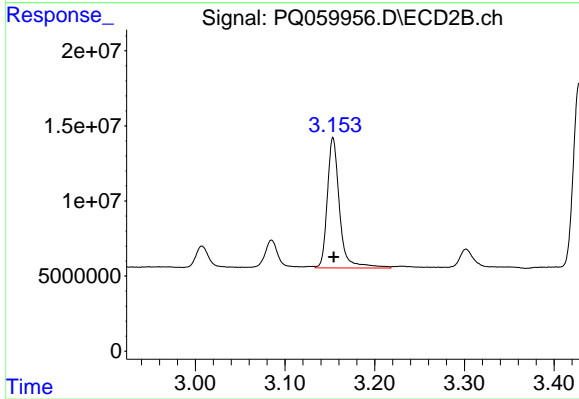
#9 AR-1221-2

R.T.: 3.085 min
 Delta R.T.: 0.000 min
 Response: 18514579
 Conc: 271.35 ng/ml



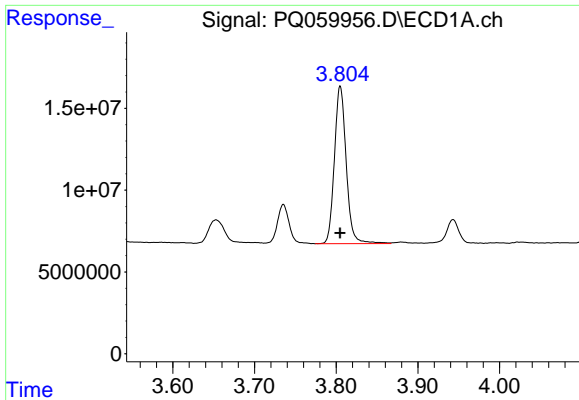
#10 AR-1221-3

R.T.: 3.805 min
 Delta R.T.: 0.000 min
 Response: 96775272
 Conc: 298.84 ng/ml



#10 AR-1221-3

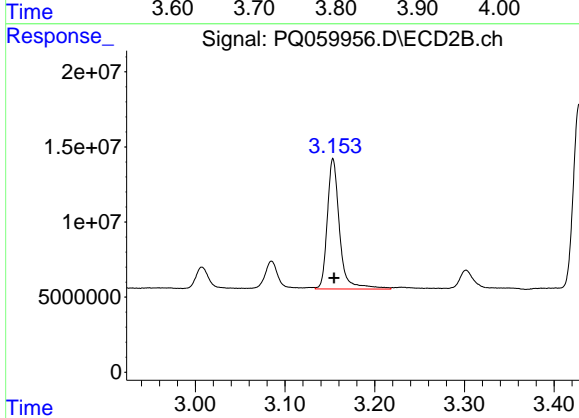
R.T.: 3.154 min
 Delta R.T.: 0.000 min
 Response: 82415922
 Conc: 387.27 ng/ml



#11 AR-1232-1

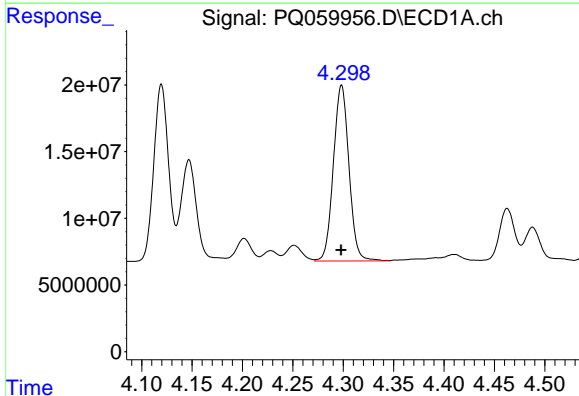
R.T.: 3.805 min
 Delta R.T.: 0.000 min
 Response: 96775272
 Conc: 393.19 ng/ml

Instrument :
 ECD_Q
 ClientSampleId :



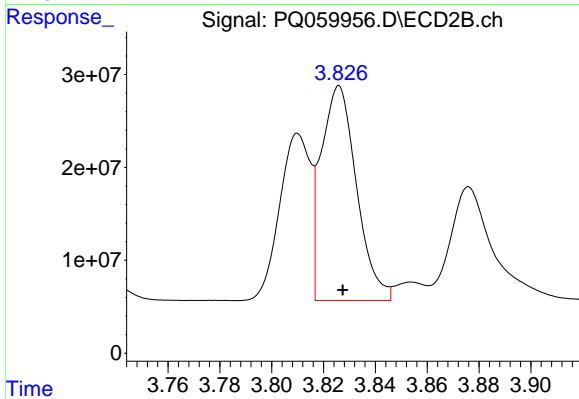
#11 AR-1232-1

R.T.: 3.154 min
 Delta R.T.: -0.001 min
 Response: 82415922
 Conc: 508.23 ng/ml



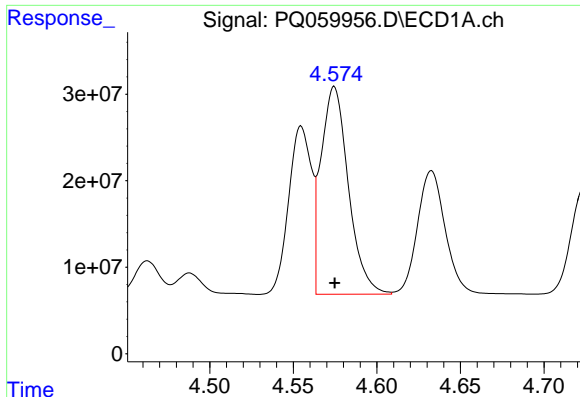
#12 AR-1232-2

R.T.: 4.298 min
 Delta R.T.: 0.000 min
 Response: 141707209
 Conc: 933.31 ng/ml



#12 AR-1232-2

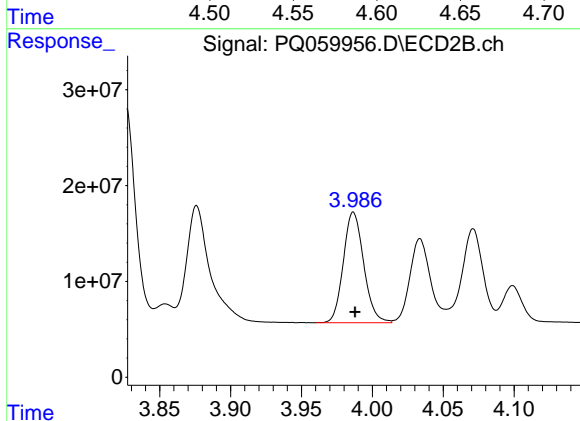
R.T.: 3.826 min
 Delta R.T.: -0.001 min
 Response: 219311961
 Conc: 1273.49 ng/ml



#13 AR-1232-3

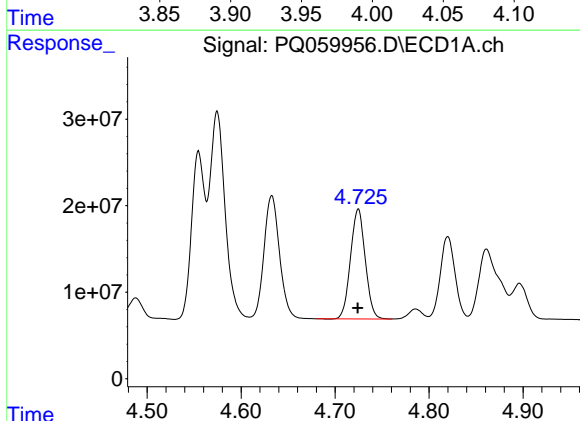
R.T.: 4.575 min
 Delta R.T.: 0.000 min
 Response: 273913425
 Conc: 1010.06 ng/ml

Instrument :
 ECD_Q
 ClientSampleId :



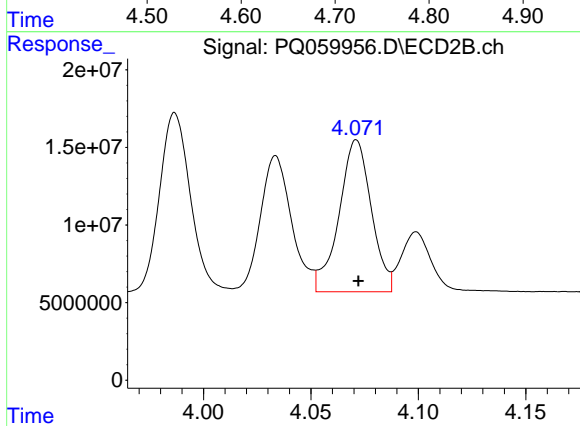
#13 AR-1232-3

R.T.: 3.987 min
 Delta R.T.: -0.001 min
 Response: 115334111
 Conc: 1288.30 ng/ml



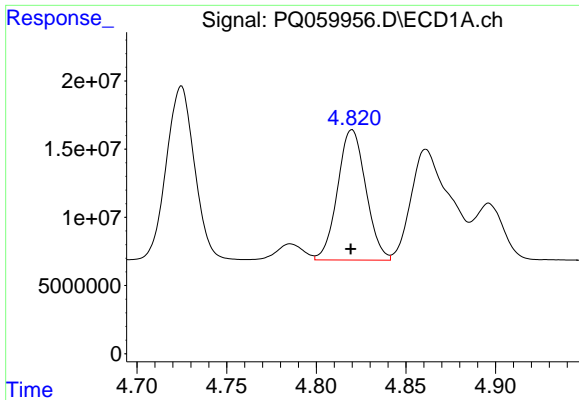
#14 AR-1232-4

R.T.: 4.725 min
 Delta R.T.: 0.000 min
 Response: 138202929
 Conc: 977.02 ng/ml



#14 AR-1232-4

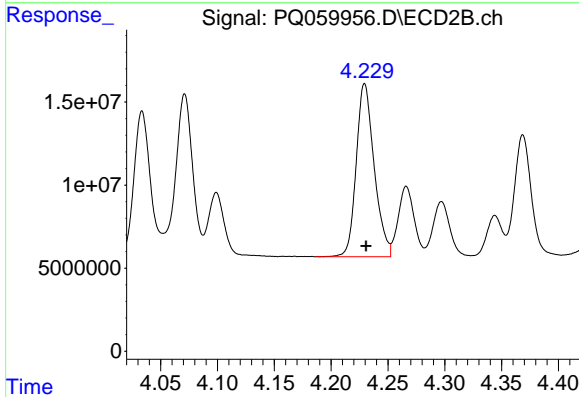
R.T.: 4.071 min
 Delta R.T.: 0.000 min
 Response: 102489991
 Conc: 1393.05 ng/ml



#15 AR-1232-5

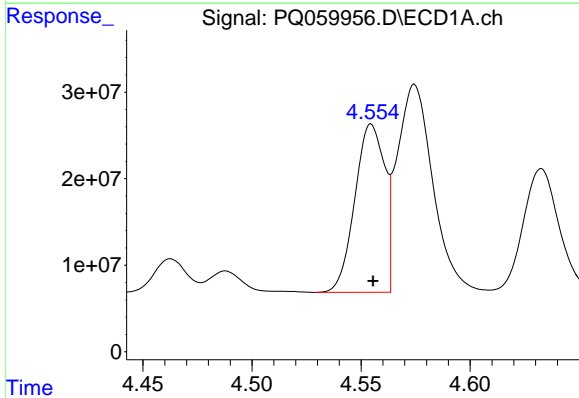
R.T.: 4.820 min
 Delta R.T.: 0.000 min
 Response: 104704107
 Conc: 1056.06 ng/ml

Instrument :
 ECD_Q
 ClientSampleId :



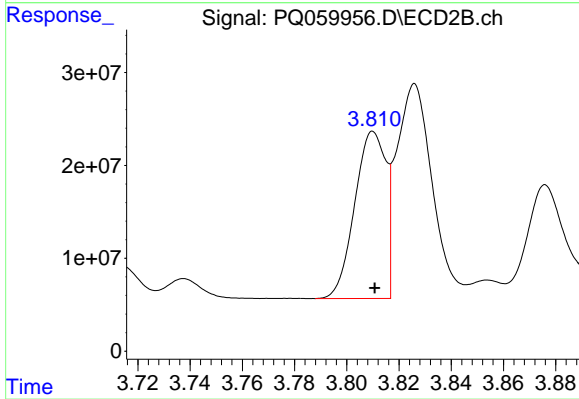
#15 AR-1232-5

R.T.: 4.230 min
 Delta R.T.: -0.001 min
 Response: 114437617
 Conc: 1297.06 ng/ml



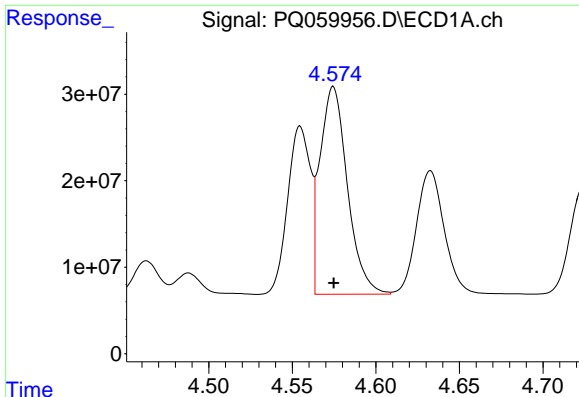
#16 AR-1242-1

R.T.: 4.555 min
 Delta R.T.: 0.000 min
 Response: 184561464
 Conc: 548.68 ng/ml



#16 AR-1242-1

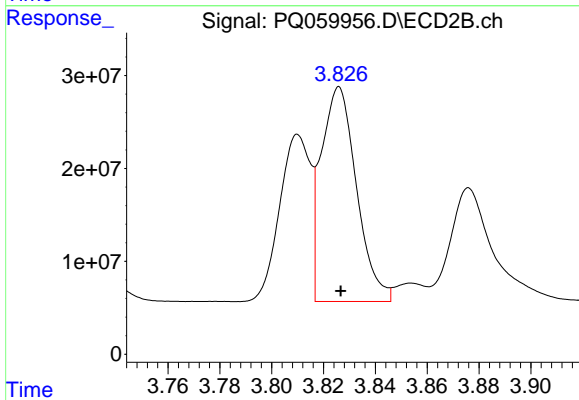
R.T.: 3.810 min
 Delta R.T.: 0.000 min
 Response: 148318698
 Conc: 720.61 ng/ml



#17 AR-1242-2

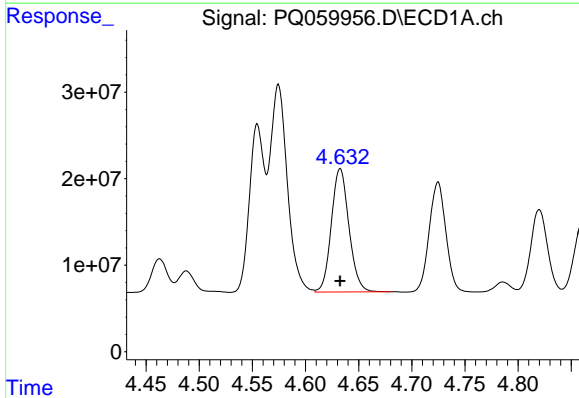
R.T.: 4.575 min
 Delta R.T.: 0.000 min
 Response: 273913425
 Conc: 559.76 ng/ml

Instrument :
 ECD_Q
 ClientSampleId :



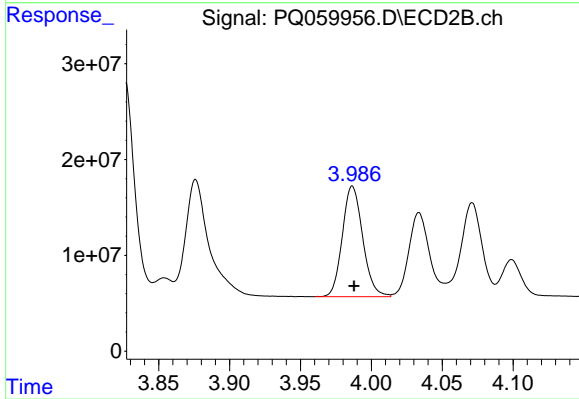
#17 AR-1242-2

R.T.: 3.826 min
 Delta R.T.: 0.000 min
 Response: 219311961
 Conc: 713.58 ng/ml



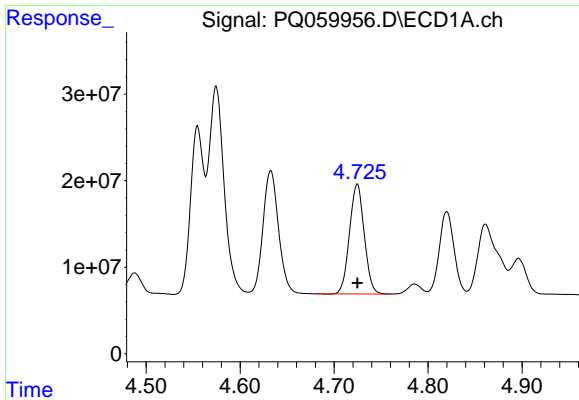
#18 AR-1242-3

R.T.: 4.633 min
 Delta R.T.: 0.000 min
 Response: 164388891
 Conc: 547.46 ng/ml



#18 AR-1242-3

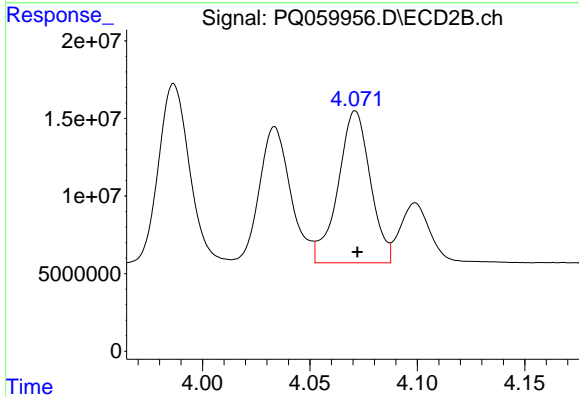
R.T.: 3.987 min
 Delta R.T.: -0.001 min
 Response: 115334111
 Conc: 722.75 ng/ml



#19 AR-1242-4

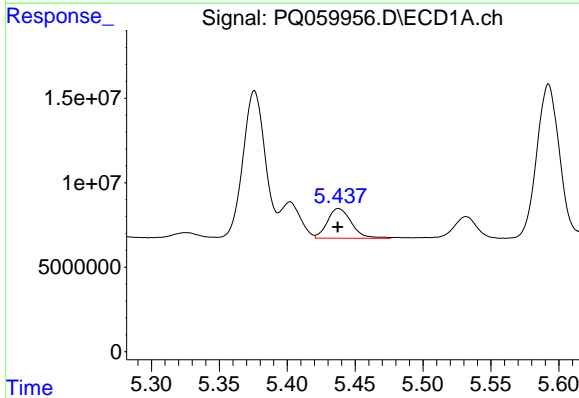
R.T.: 4.725 min
 Delta R.T.: 0.000 min
 Response: 138202929
 Conc: 548.40 ng/ml

Instrument :
 ECD_Q
 ClientSampleId :



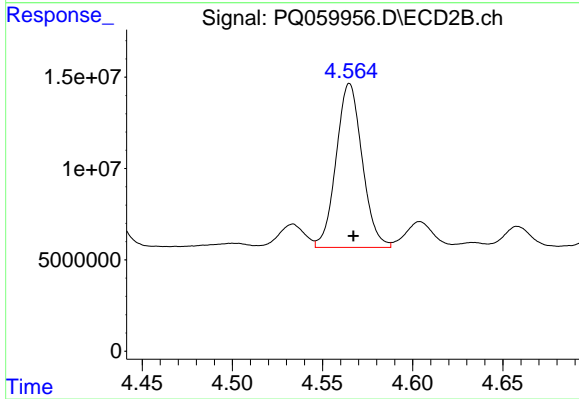
#19 AR-1242-4

R.T.: 4.071 min
 Delta R.T.: 0.000 min
 Response: 102489991
 Conc: 698.88 ng/ml



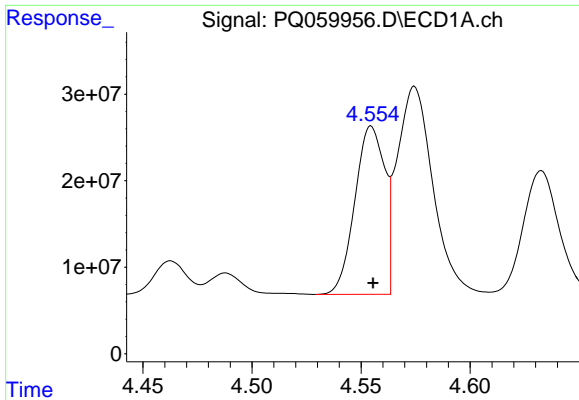
#20 AR-1242-5

R.T.: 5.438 min
 Delta R.T.: 0.000 min
 Response: 21635602
 Conc: 81.31 ng/ml



#20 AR-1242-5

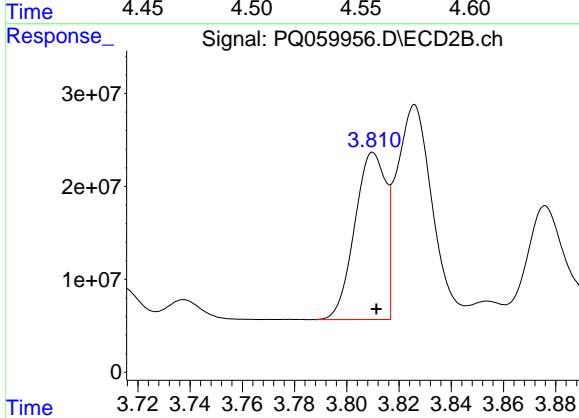
R.T.: 4.565 min
 Delta R.T.: -0.002 min
 Response: 90087582
 Conc: 439.30 ng/ml



#21 AR-1248-1

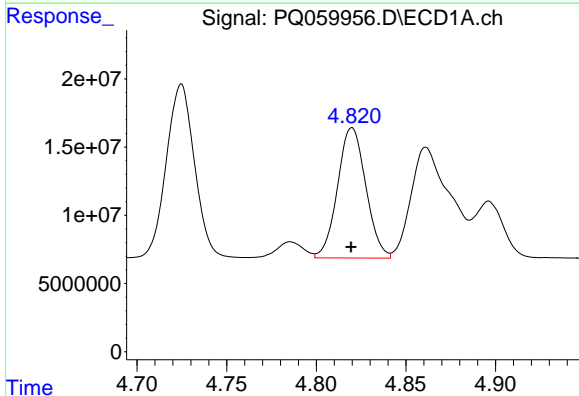
R.T.: 4.555 min
 Delta R.T.: 0.000 min
 Response: 184561464
 Conc: 723.64 ng/ml

Instrument :
 ECD_Q
 ClientSampleId :



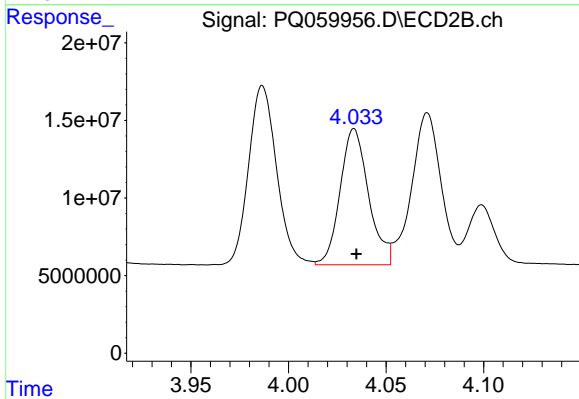
#21 AR-1248-1

R.T.: 3.810 min
 Delta R.T.: -0.001 min
 Response: 148318698
 Conc: 935.07 ng/ml



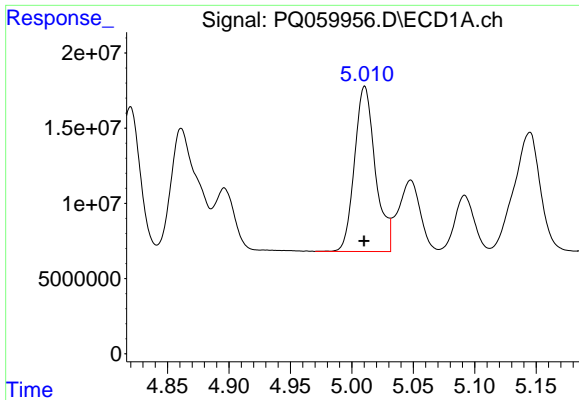
#22 AR-1248-2

R.T.: 4.820 min
 Delta R.T.: 0.000 min
 Response: 104704107
 Conc: 320.35 ng/ml



#22 AR-1248-2

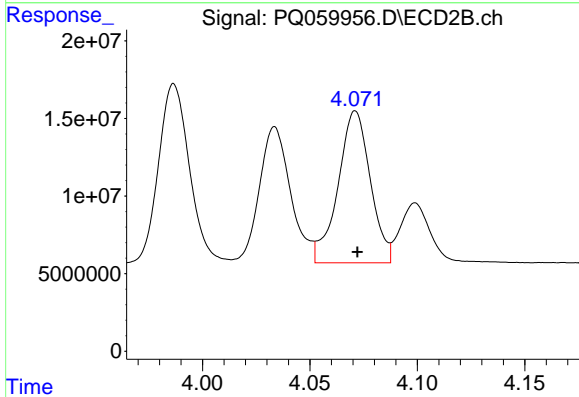
R.T.: 4.034 min
 Delta R.T.: -0.001 min
 Response: 88946537
 Conc: 412.51 ng/ml



#23 AR-1248-3

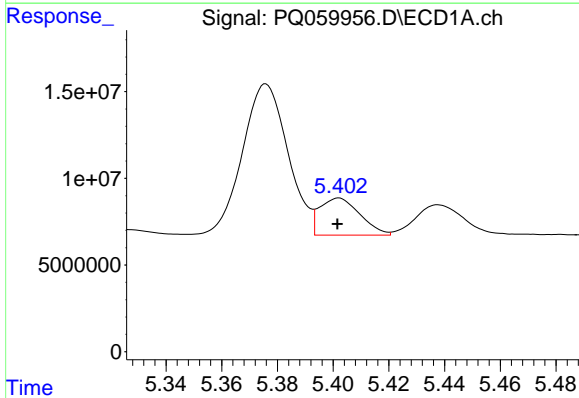
R.T.: 5.010 min
 Delta R.T.: 0.000 min
 Response: 129538102
 Conc: 330.13 ng/ml

Instrument :
 ECD_Q
 ClientSampleId :



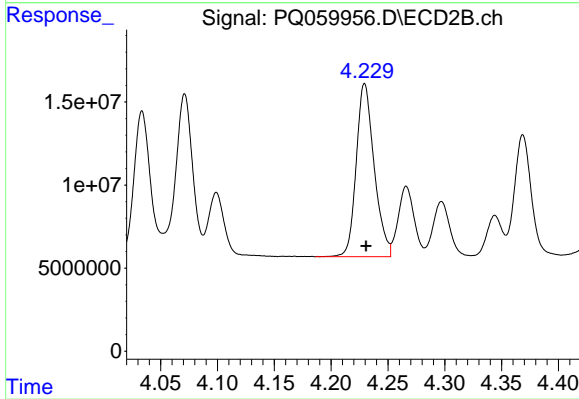
#23 AR-1248-3

R.T.: 4.071 min
 Delta R.T.: 0.000 min
 Response: 102489991
 Conc: 487.00 ng/ml



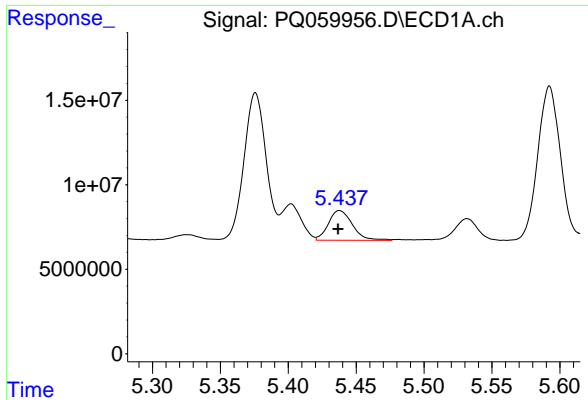
#24 AR-1248-4

R.T.: 5.402 min
 Delta R.T.: 0.000 min
 Response: 21457898
 Conc: 48.47 ng/ml



#24 AR-1248-4

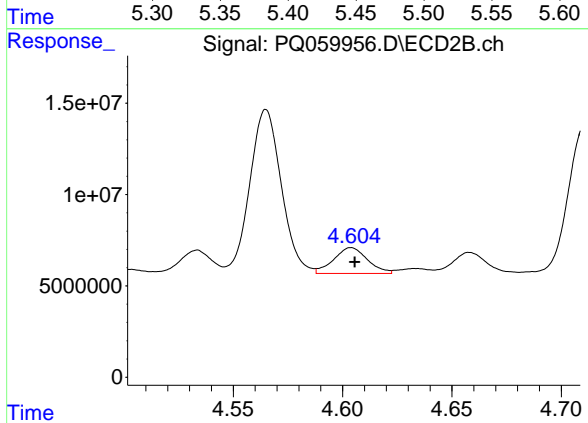
R.T.: 4.230 min
 Delta R.T.: -0.001 min
 Response: 114437617
 Conc: 430.05 ng/ml



#25 AR-1248-5

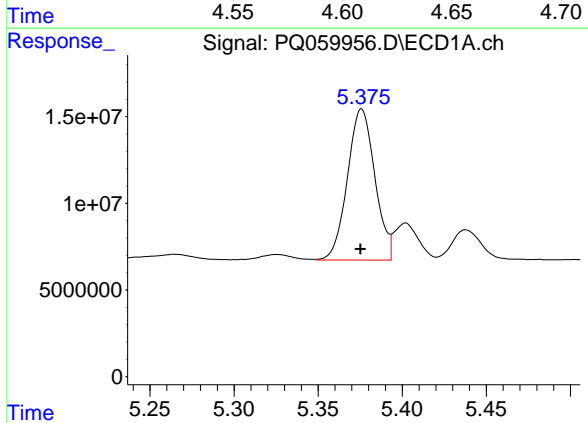
R.T.: 5.438 min
 Delta R.T.: 0.001 min
 Response: 21635602
 Conc: 49.58 ng/ml

Instrument :
 ECD_Q
 ClientSampleId :



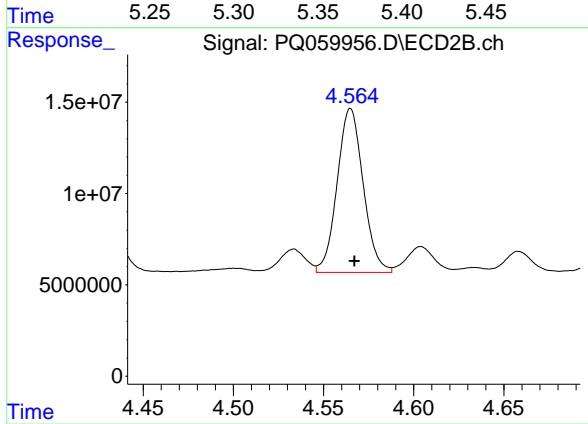
#25 AR-1248-5

R.T.: 4.604 min
 Delta R.T.: -0.002 min
 Response: 15113026
 Conc: 57.61 ng/ml



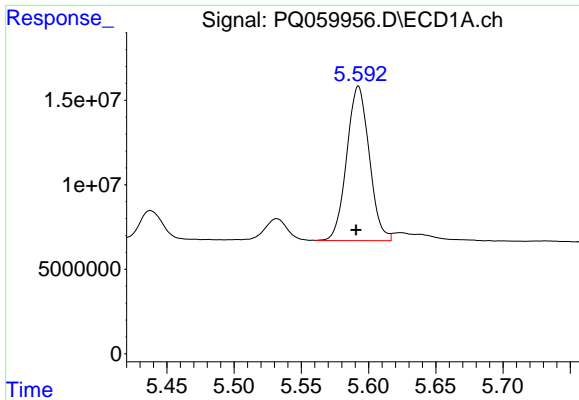
#26 AR-1254-1

R.T.: 5.376 min
 Delta R.T.: 0.000 min
 Response: 98883341
 Conc: 218.76 ng/ml



#26 AR-1254-1

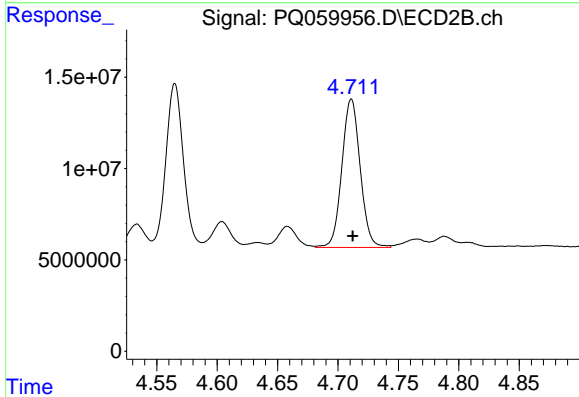
R.T.: 4.565 min
 Delta R.T.: -0.002 min
 Response: 90087582
 Conc: 221.46 ng/ml



#27 AR-1254-2

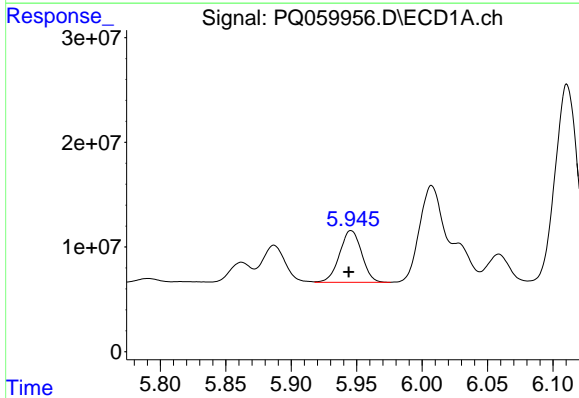
R.T.: 5.592 min
 Delta R.T.: 0.002 min
 Response: 106729110
 Conc: 153.69 ng/ml

Instrument :
 ECD_Q
 ClientSampleId :



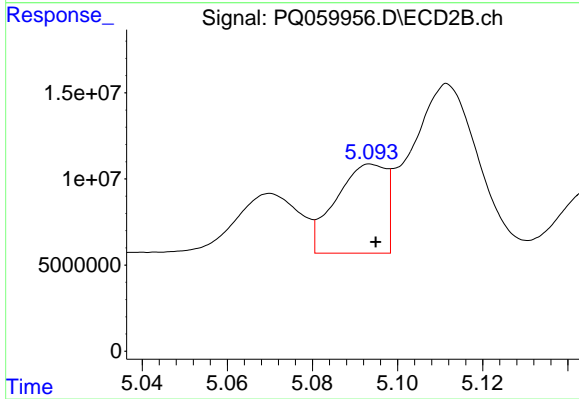
#27 AR-1254-2

R.T.: 4.711 min
 Delta R.T.: -0.001 min
 Response: 85742799
 Conc: 238.38 ng/ml



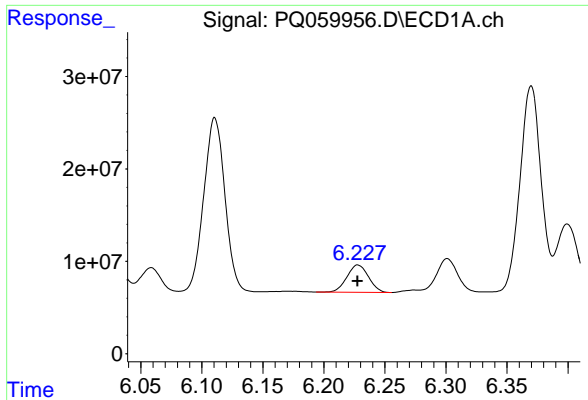
#28 AR-1254-3

R.T.: 5.946 min
 Delta R.T.: 0.002 min
 Response: 58112747
 Conc: 79.70 ng/ml



#28 AR-1254-3

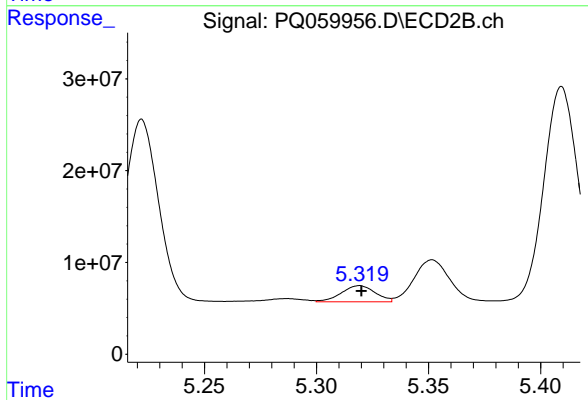
R.T.: 5.094 min
 Delta R.T.: 0.000 min
 Response: 42135343
 Conc: 73.42 ng/ml



#29 AR-1254-4

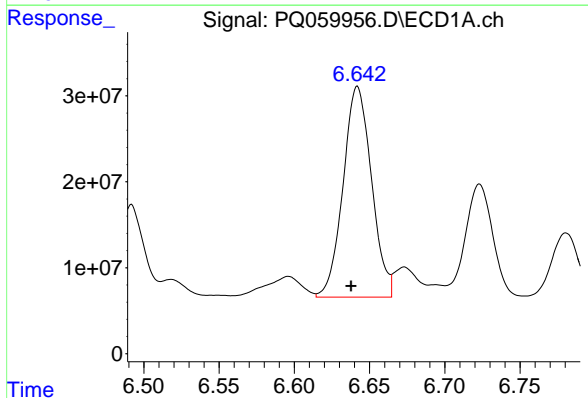
R.T.: 6.228 min
 Delta R.T.: 0.000 min
 Response: 36570887
 Conc: 68.00 ng/ml

Instrument :
 ECD_Q
 ClientSampleId :



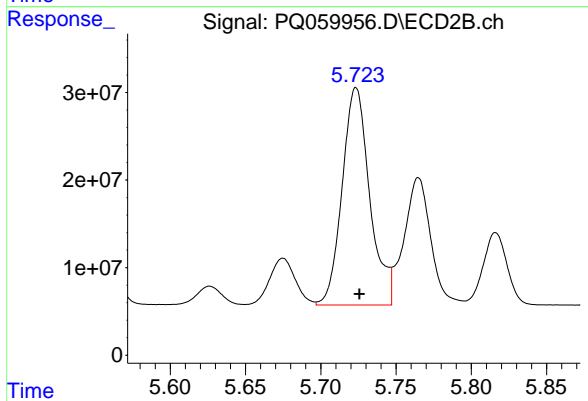
#29 AR-1254-4

R.T.: 5.319 min
 Delta R.T.: 0.000 min
 Response: 18380719
 Conc: 50.40 ng/ml



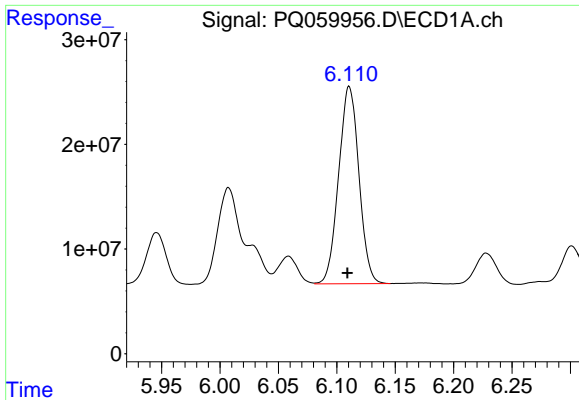
#30 AR-1254-5

R.T.: 6.642 min
 Delta R.T.: 0.004 min
 Response: 322629025
 Conc: 543.26 ng/ml



#30 AR-1254-5

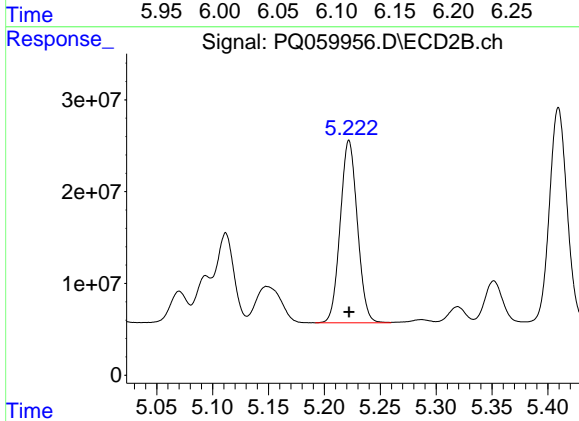
R.T.: 5.723 min
 Delta R.T.: -0.002 min
 Response: 316864958
 Conc: 591.38 ng/ml



#31 AR-1260-1

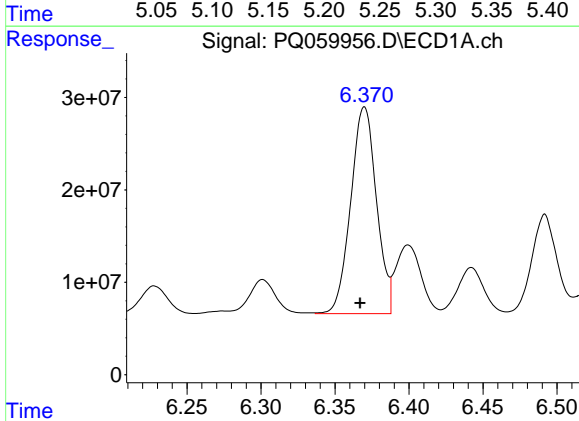
R.T.: 6.111 min
 Delta R.T.: 0.002 min
 Response: 227945495
 Conc: 407.40 ng/ml

Instrument :
 ECD_Q
 ClientSampleId :



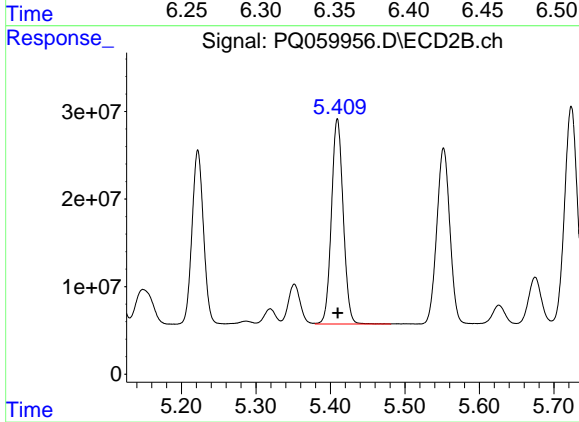
#31 AR-1260-1

R.T.: 5.222 min
 Delta R.T.: 0.000 min
 Response: 212513007
 Conc: 536.54 ng/ml



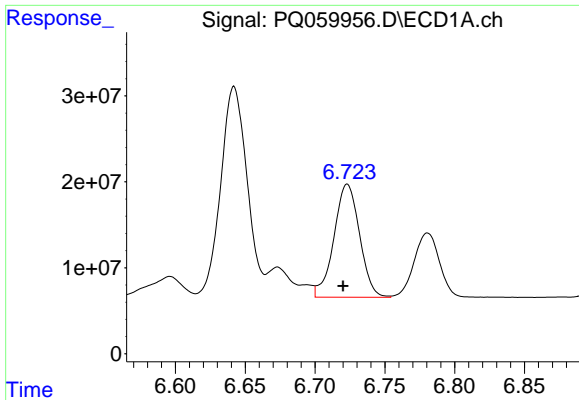
#32 AR-1260-2

R.T.: 6.370 min
 Delta R.T.: 0.003 min
 Response: 270429547
 Conc: 403.88 ng/ml



#32 AR-1260-2

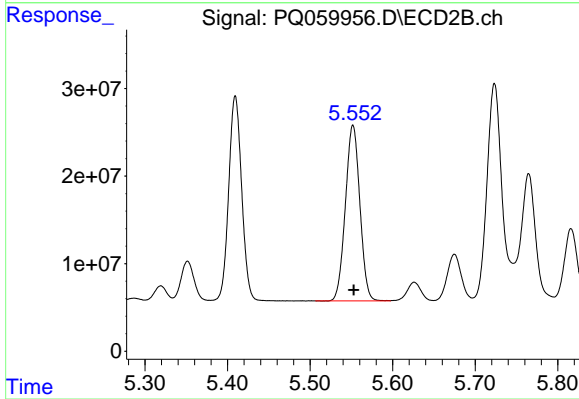
R.T.: 5.409 min
 Delta R.T.: 0.000 min
 Response: 256840966
 Conc: 533.08 ng/ml



#33 AR-1260-3

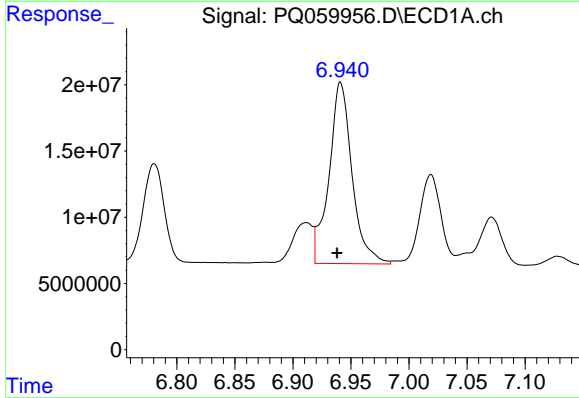
R.T.: 6.723 min
 Delta R.T.: 0.003 min
 Response: 168360016
 Conc: 395.42 ng/ml

Instrument :
 ECD_Q
 ClientSampleId :



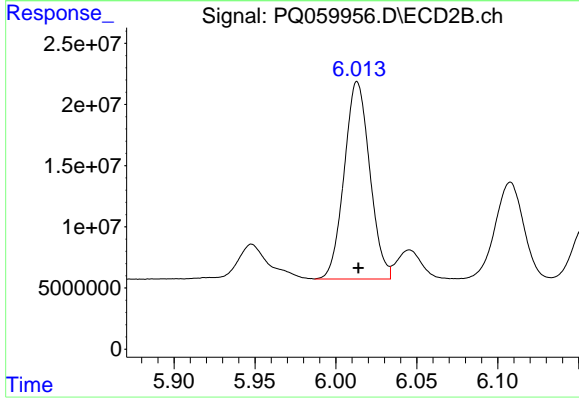
#33 AR-1260-3

R.T.: 5.552 min
 Delta R.T.: -0.001 min
 Response: 244835279
 Conc: 528.00 ng/ml



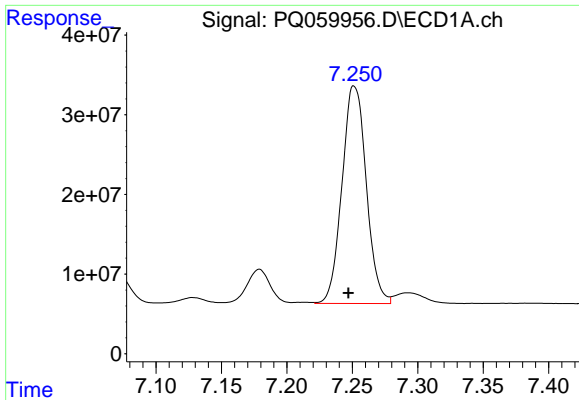
#34 AR-1260-4

R.T.: 6.941 min
 Delta R.T.: 0.003 min
 Response: 189458348
 Conc: 378.60 ng/ml



#34 AR-1260-4

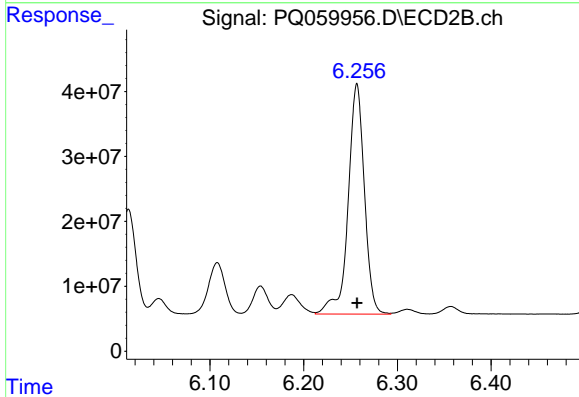
R.T.: 6.013 min
 Delta R.T.: 0.000 min
 Response: 177337444
 Conc: 518.50 ng/ml



#35 AR-1260-5

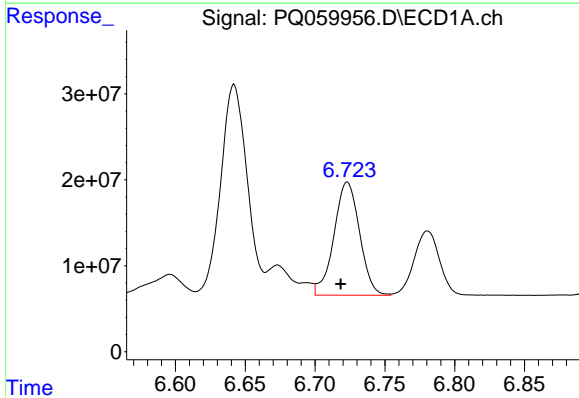
R.T.: 7.251 min
 Delta R.T.: 0.004 min
 Response: 353182093
 Conc: 361.28 ng/ml

Instrument :
 ECD_Q
 ClientSampleId :



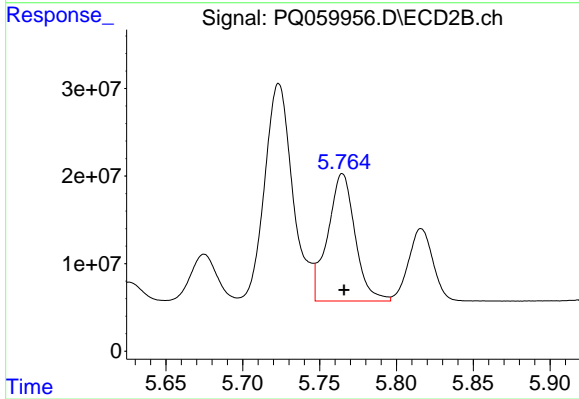
#35 AR-1260-5

R.T.: 6.257 min
 Delta R.T.: 0.000 min
 Response: 427898772
 Conc: 514.80 ng/ml



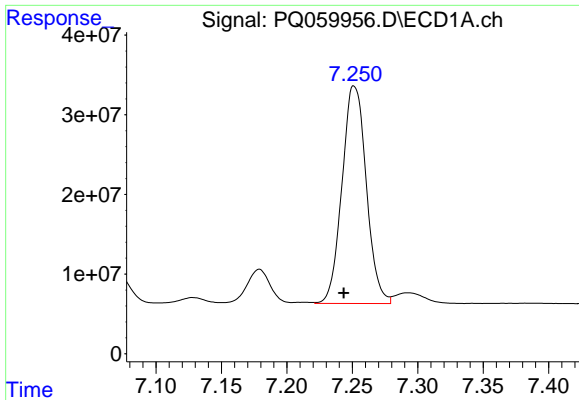
#36 AR-1262-1

R.T.: 6.723 min
 Delta R.T.: 0.005 min
 Response: 168360016
 Conc: 253.66 ng/ml



#36 AR-1262-1

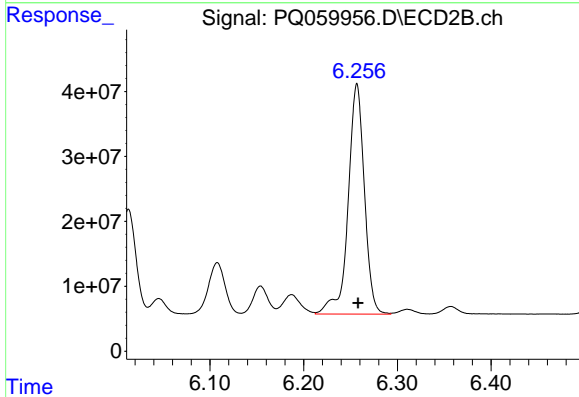
R.T.: 5.765 min
 Delta R.T.: -0.001 min
 Response: 180522814
 Conc: 352.90 ng/ml



#37 AR-1262-2

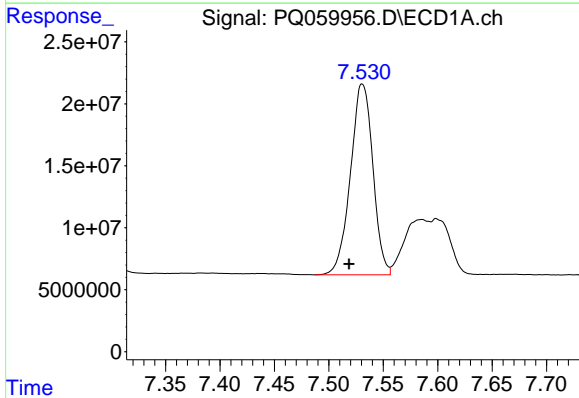
R.T.: 7.251 min
 Delta R.T.: 0.008 min
 Response: 353182093
 Conc: 317.48 ng/ml

Instrument :
 ECD_Q
 ClientSampleId :



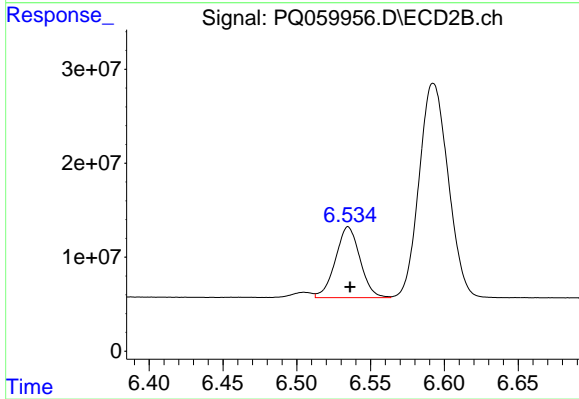
#37 AR-1262-2

R.T.: 6.257 min
 Delta R.T.: -0.001 min
 Response: 427898772
 Conc: 451.35 ng/ml



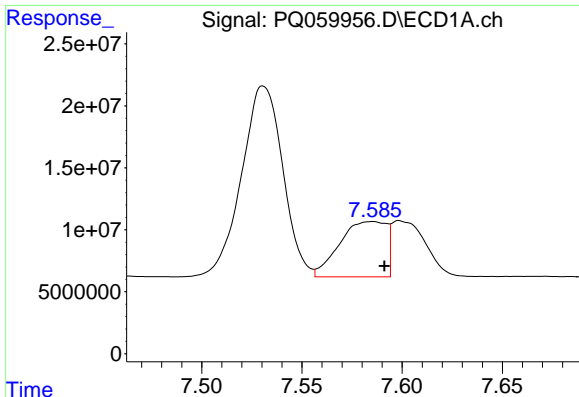
#38 AR-1262-3

R.T.: 7.531 min
 Delta R.T.: 0.012 min
 Response: 220987998
 Conc: 307.64 ng/ml



#38 AR-1262-3

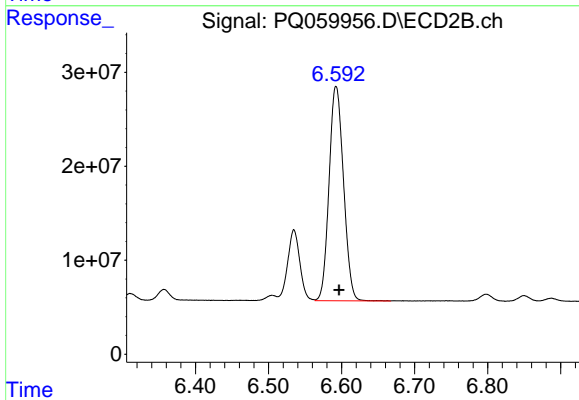
R.T.: 6.535 min
 Delta R.T.: -0.001 min
 Response: 87520834
 Conc: 236.46 ng/ml



#39 AR-1262-4

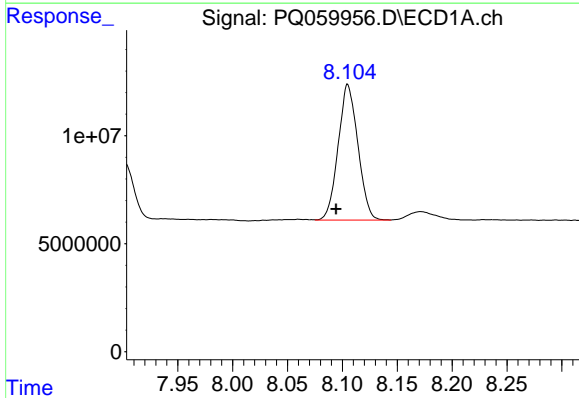
R.T.: 7.585 min
 Delta R.T.: -0.006 min
 Response: 72537466
 Conc: 130.59 ng/ml

Instrument :
 ECD_Q
 ClientSampleId :



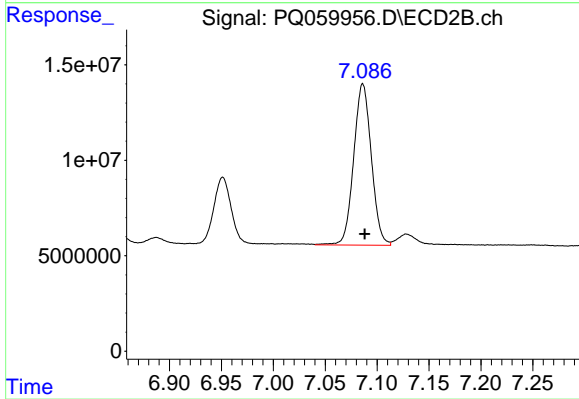
#39 AR-1262-4

R.T.: 6.593 min
 Delta R.T.: -0.004 min
 Response: 313635112
 Conc: 442.84 ng/ml



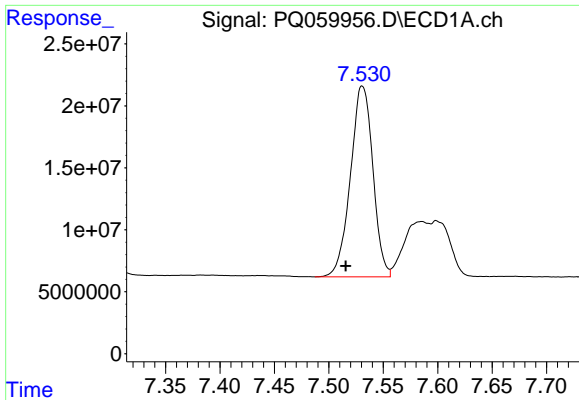
#40 AR-1262-5

R.T.: 8.105 min
 Delta R.T.: 0.011 min
 Response: 78725340
 Conc: 227.20 ng/ml



#40 AR-1262-5

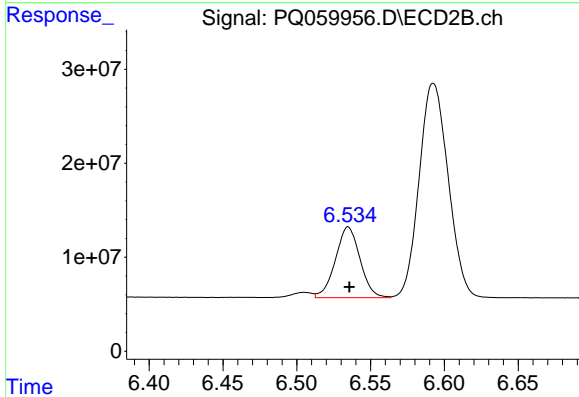
R.T.: 7.086 min
 Delta R.T.: -0.002 min
 Response: 100106219
 Conc: 300.63 ng/ml



#41 AR-1268-1

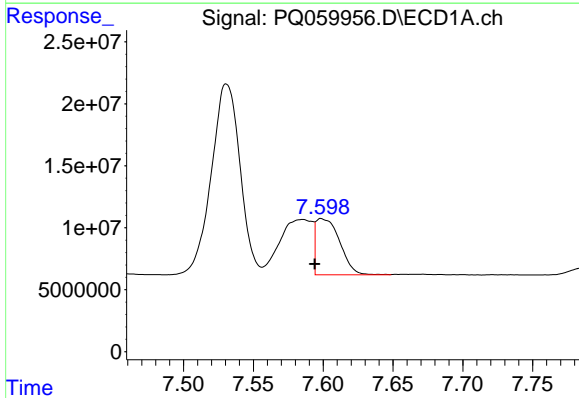
R.T.: 7.531 min
 Delta R.T.: 0.015 min
 Response: 220987998
 Conc: 176.18 ng/ml

Instrument :
 ECD_Q
 ClientSampleId :



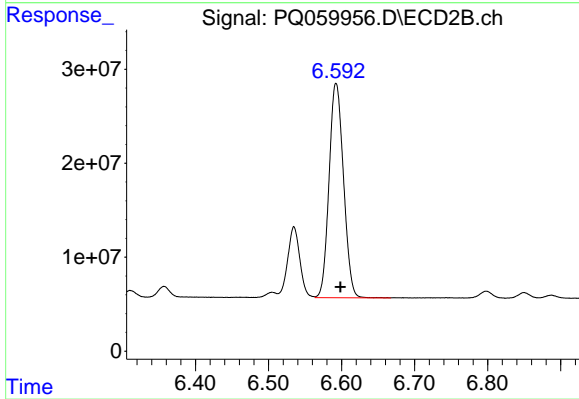
#41 AR-1268-1

R.T.: 6.535 min
 Delta R.T.: 0.000 min
 Response: 87520834
 Conc: 79.10 ng/ml



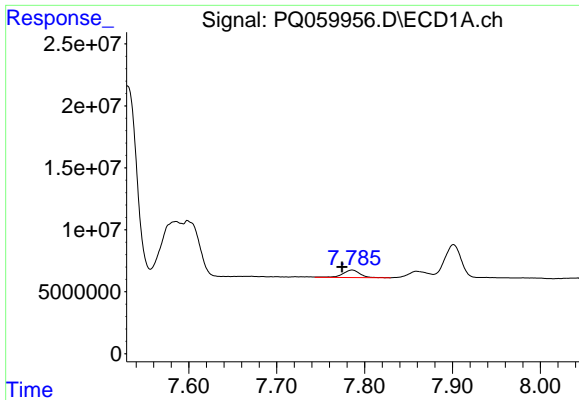
#42 AR-1268-2

R.T.: 7.599 min
 Delta R.T.: 0.005 min
 Response: 54013740
 Conc: 47.01 ng/ml



#42 AR-1268-2

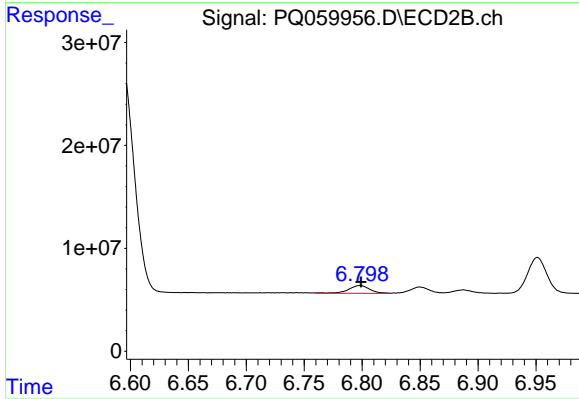
R.T.: 6.593 min
 Delta R.T.: -0.006 min
 Response: 313635112
 Conc: 306.72 ng/ml



#43 AR-1268-3

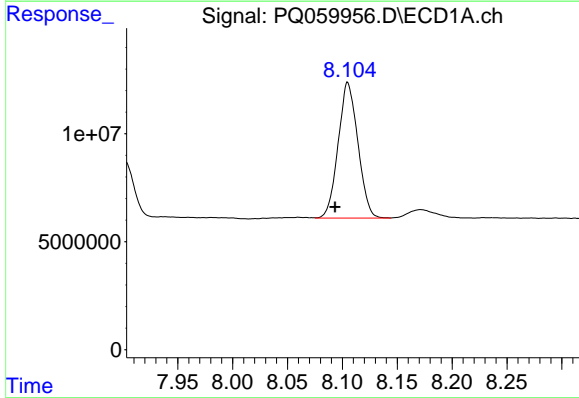
R.T.: 7.786 min
 Delta R.T.: 0.012 min
 Response: 8036762
 Conc: 8.68 ng/ml

Instrument :
 ECD_Q
 ClientSampleId :



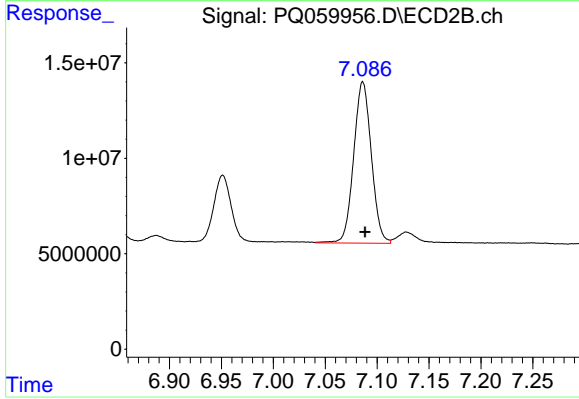
#43 AR-1268-3

R.T.: 6.798 min
 Delta R.T.: 0.000 min
 Response: 9461273
 Conc: 10.84 ng/ml



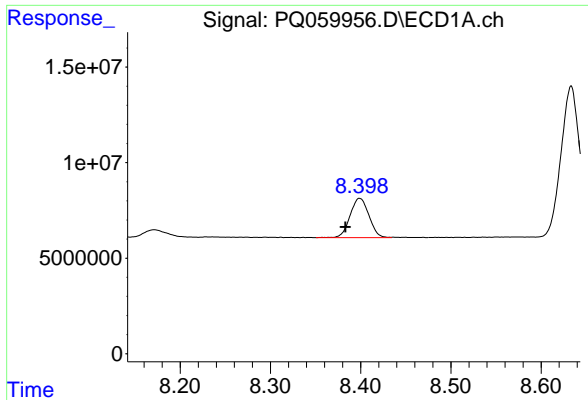
#44 AR-1268-4

R.T.: 8.105 min
 Delta R.T.: 0.012 min
 Response: 78725340
 Conc: 202.48 ng/ml



#44 AR-1268-4

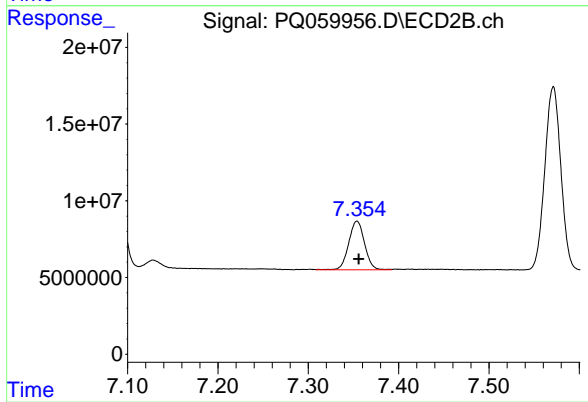
R.T.: 7.086 min
 Delta R.T.: -0.002 min
 Response: 100106219
 Conc: 265.73 ng/ml



#45 AR-1268-5

R.T.: 8.399 min
Delta R.T.: 0.016 min
Response: 29941313
Conc: 11.36 ng/ml

Instrument :
ECD_Q
ClientSampleId :



#45 AR-1268-5

R.T.: 7.354 min
Delta R.T.: -0.002 min
Response: 38772408
Conc: 13.91 ng/ml