

Data Path : Z:\pestpcbsrv\HPCHEM1\ECD\_Q\Data\PQ110722\  
 Data File : PQ059979.D  
 Signal(s) : Signal #1: ECD1A.ch Signal #2: ECD2B.ch  
 Acq On : 08 Nov 2022 01:17  
 Operator : YP\AJ  
 Sample : N5474-02  
 Misc :  
 ALS Vial : 42 Sample Multiplier: 1

Instrument :  
 ECD\_Q  
 ClientSampleId :  
 5592-4

Integration File signal 1: autoint1.e  
 Integration File signal 2: autoint2.e  
 Quant Time: Nov 08 03:26:37 2022  
 Quant Method : Z:\pestpcbsrv\HPCHEM1\ECD\_Q\Method\PQ110122.M  
 Quant Title : GC EXTRACTABLES  
 QLast Update : Tue Nov 01 17:05:38 2022  
 Response via : Initial Calibration  
 Integrator: ChemStation

Volume Inj. : 2 µl  
 Signal #1 Phase : ZB-MR1 Signal #2 Phase: ZB-MR2  
 Signal #1 Info : 30Mx0.32mmx 0.50µ Signal #2 Info : 30M x 0.32mm x 0.25µm

Compound	RT#1	RT#2	Resp#1	Resp#2	ng/ml	ng/ml
-----						
System Monitoring Compounds						
1) SA Tetrachlo...	3.458	2.807	220.9E6	180.0E6	18.311	22.691
2) SA Decachlor...	8.633	7.571	72490493	84150896	9.935	11.569

Target Compounds

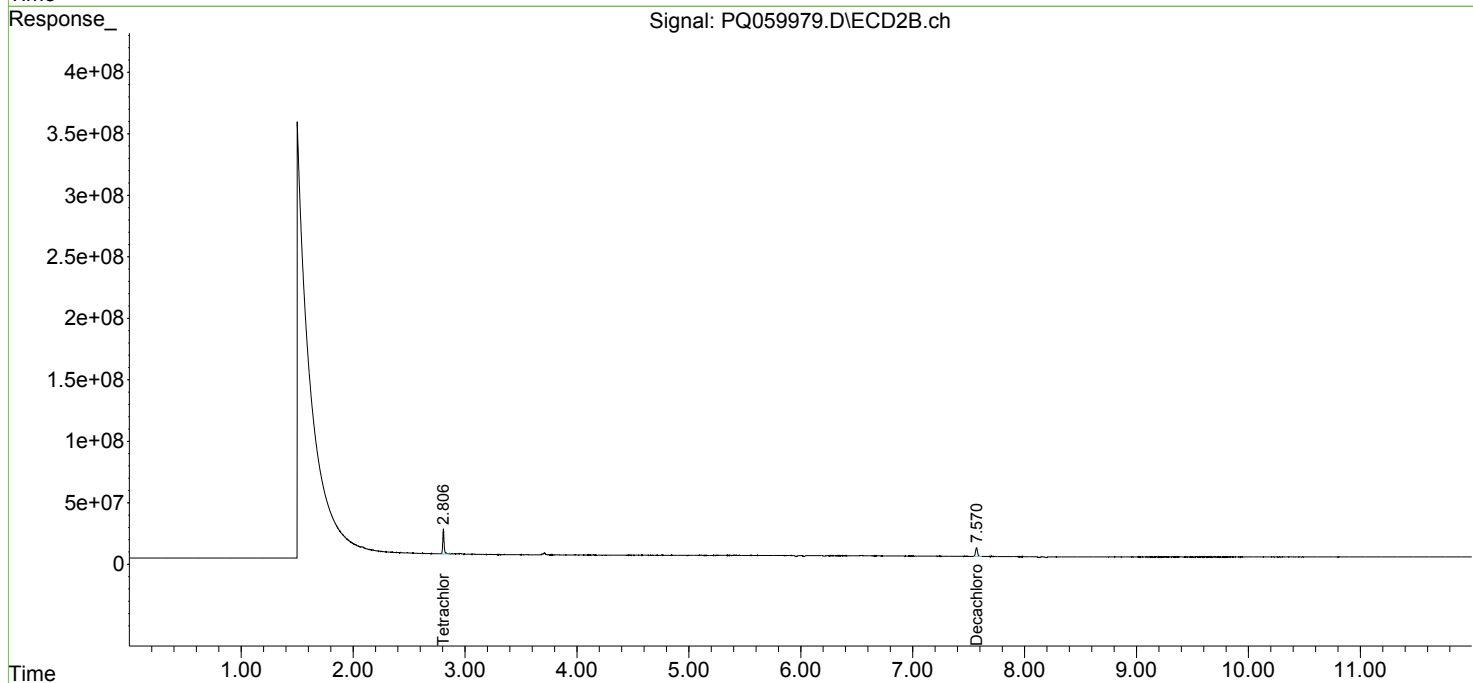
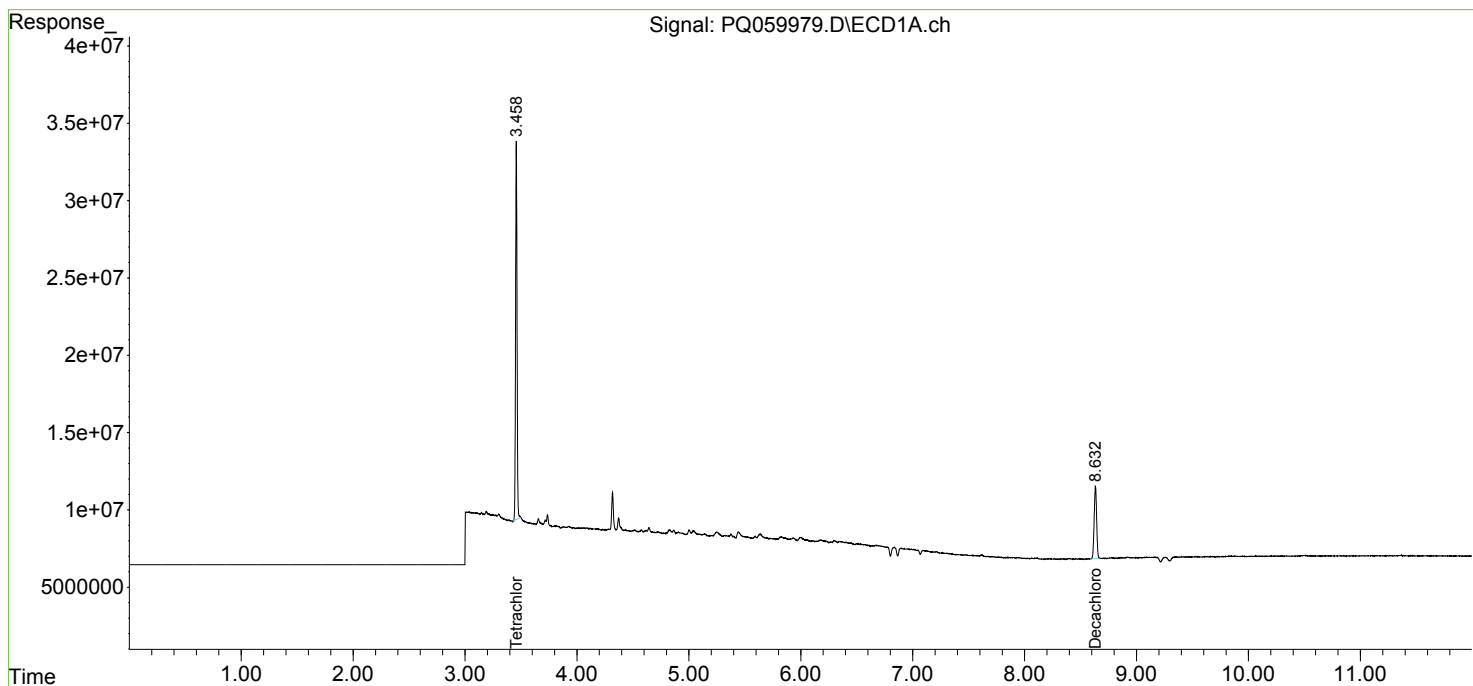
(f)=RT Delta > 1/2 Window (#)=Amounts differ by > 25% (m)=manual int.

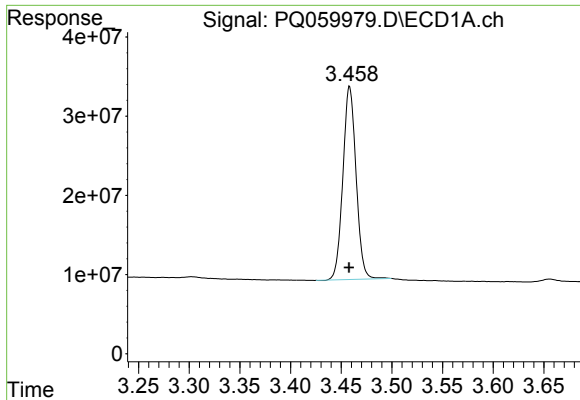
Data Path : Z:\pestpcbsrv\HPCHEM1\ECD\_Q\Data\PQ110722\  
 Data File : PQ059979.D  
 Signal(s) : Signal #1: ECD1A.ch Signal #2: ECD2B.ch  
 Acq On : 08 Nov 2022 01:17  
 Operator : YP\AJ  
 Sample : N5474-02  
 Misc :  
 ALS Vial : 42 Sample Multiplier: 1

Instrument :  
 ECD\_Q  
 ClientSampleId :  
 5592-4

Integration File signal 1: autoint1.e  
 Integration File signal 2: autoint2.e  
 Quant Time: Nov 08 03:26:37 2022  
 Quant Method : Z:\pestpcbsrv\HPCHEM1\ECD\_Q\Method\PQ110122.M  
 Quant Title : GC EXTRACTABLES  
 QLast Update : Tue Nov 01 17:05:38 2022  
 Response via : Initial Calibration  
 Integrator: ChemStation

Volume Inj. : 2 µl  
 Signal #1 Phase : ZB-MR1 Signal #2 Phase: ZB-MR2  
 Signal #1 Info : 30Mx0.32mmx 0.50µ Signal #2 Info : 30M x 0.32mm x 0.25µm

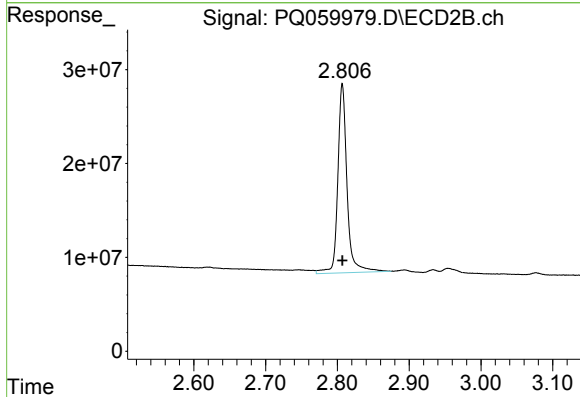




#1 Tetrachloro-m-xylene

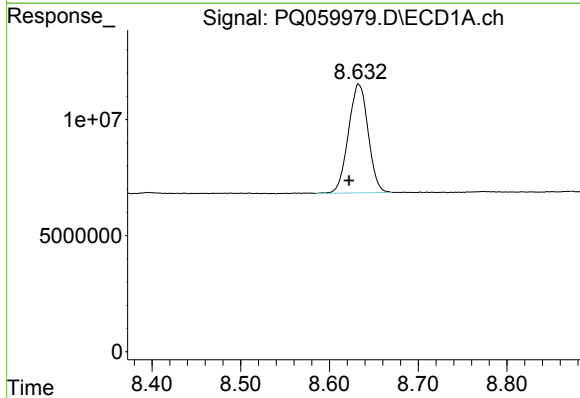
R.T.: 3.458 min  
 Delta R.T.: 0.000 min  
 Response: 220938377  
 Conc: 18.31 ng/ml

Instrument :  
 ECD\_Q  
 ClientSampleId :  
 5592-4



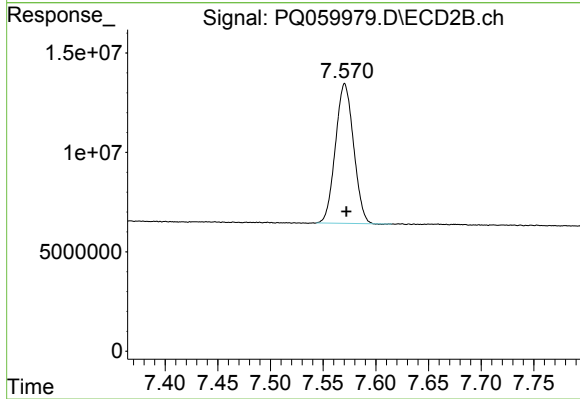
#1 Tetrachloro-m-xylene

R.T.: 2.807 min  
 Delta R.T.: 0.000 min  
 Response: 180029368  
 Conc: 22.69 ng/ml



#2 Decachlorobiphenyl

R.T.: 8.633 min  
 Delta R.T.: 0.011 min  
 Response: 72490493  
 Conc: 9.93 ng/ml



#2 Decachlorobiphenyl

R.T.: 7.571 min  
 Delta R.T.: -0.001 min  
 Response: 84150896  
 Conc: 11.57 ng/ml