

Data Path : Z:\pestpcbsrv\HPCHEM1\ECD_Q\Data\PQ110822\
 Data File : PQ059998.D
 Signal(s) : Signal #1: ECD1A.ch Signal #2: ECD2B.ch
 Acq On : 08 Nov 2022 20:01
 Operator : YP\AJ
 Sample : N5494-05
 Misc :
 ALS Vial : 15 Sample Multiplier: 1

Instrument :
 ECD_Q
 ClientSampleId :

Integration File signal 1: autoint1.e
 Integration File signal 2: autoint2.e
 Quant Time: Nov 08 21:24:48 2022
 Quant Method : Z:\pestpcbsrv\HPCHEM1\ECD_Q\Method\PQ110122.M
 Quant Title : GC EXTRACTABLES
 QLast Update : Tue Nov 01 17:05:38 2022
 Response via : Initial Calibration
 Integrator: ChemStation

Volume Inj. : 2 µl
 Signal #1 Phase : ZB-MR1 Signal #2 Phase: ZB-MR2
 Signal #1 Info : 30Mx0.32mmx 0.50µ Signal #2 Info : 30M x 0.32mm x 0.25µm

| Compound | RT#1 | RT#2 | Resp#1 | Resp#2 | ng/ml | ng/ml |
|-----------------------------|--------|--------|----------|---------|---------|----------|
| System Monitoring Compounds | | | | | | |
| 1) SA Tetrachlo... | 3.457 | 2.808 | 262.5E6 | 280.5E6 | 21.759 | 35.358 # |
| 2) SA Decachlor... | 8.631f | 7.571 | 133.5E6 | 238.1E6 | 18.294 | 32.736 # |
| Target Compounds | | | | | | |
| 3) L1 AR-1016-1 | 4.556 | 3.810 | 373060 | 345300 | 0.859 | 1.303 # |
| 4) L1 AR-1016-2 | 4.574 | 3.824 | 858973 | 927681 | 1.368 | 2.354 # |
| 5) L1 AR-1016-3 | 4.630 | 3.989 | 350183 | 538226 | 0.904 | 2.629 # |
| 6) L1 AR-1016-4 | 4.730 | 4.033 | 1089452 | 863370 | 3.383 | 5.424 # |
| 7) L1 AR-1016-5 | 5.014 | 4.215f | 155502 | 4283683 | 0.508 | 20.790 # |
| 8) L2 AR-1221-1 | 3.670 | 2.997 | 33701930 | 188855 | 231.247 | 2.061 # |
| 9) L2 AR-1221-2 | 3.735 | 3.078 | 12670003 | 4184094 | 115.302 | 61.322 # |
| 10) L2 AR-1221-3 | 3.816 | 3.153 | 1559688 | 998971 | 4.816 | 4.694 |
| 11) L3 AR-1232-1 | 3.816 | 3.153 | 1559688 | 998971 | 6.337 | 6.160 |
| 12) L3 AR-1232-2 | 4.301 | 3.824 | 6767842 | 927681 | 44.574 | 5.387 # |
| 13) L3 AR-1232-3 | 4.574 | 3.989 | 858973 | 538226 | 3.167 | 6.012 # |
| 14) L3 AR-1232-4 | 4.730 | 4.054f | 1089452 | 610508 | 7.702 | 8.298 |
| 15) L3 AR-1232-5 | 4.823 | 4.215f | 662012 | 4283683 | 6.677 | 48.552 # |
| 16) L4 AR-1242-1 | 4.556 | 3.810 | 373060 | 345300 | 1.109 | 1.678 # |
| 17) L4 AR-1242-2 | 4.574 | 3.824 | 858973 | 927681 | 1.755 | 3.018 # |
| 18) L4 AR-1242-3 | 4.630 | 3.989 | 350183 | 538226 | 1.166 | 3.373 # |
| 19) L4 AR-1242-4 | 4.730 | 4.054f | 1089452 | 610508 | 4.323 | 4.163 |
| 20) L4 AR-1242-5 | 5.437 | 4.567 | 2404501 | 1725113 | 9.037 | 8.412 |
| 21) L5 AR-1248-1 | 4.556 | 3.810 | 373060 | 345300 | 1.463 | 2.177 # |
| 22) L5 AR-1248-2 | 4.823 | 4.033 | 662012 | 863370 | 2.026 | 4.004 # |
| 23) L5 AR-1248-3 | 5.014 | 4.054f | 155502 | 610508 | 0.396 | 2.901 # |
| 24) L5 AR-1248-4 | 5.379f | 4.215f | 2925449 | 4283683 | 6.608 | 16.098 # |
| 25) L5 AR-1248-5 | 5.437 | 4.604 | 2404501 | 5031092 | 5.510 | 19.180 # |
| 26) L6 AR-1254-1 | 5.379 | 4.567 | 2925449 | 1725113 | 6.472 | 4.241 # |
| 27) L6 AR-1254-2 | 5.588 | 4.711 | 720004 | 1853949 | 1.037 | 5.154 # |
| 28) L6 AR-1254-3 | 5.932 | 5.097 | 2414710 | 4508576 | 3.312 | 7.856 # |
| 29) L6 AR-1254-4 | 6.235 | 5.324 | 628132 | 2157281 | 1.168 | 5.916 # |
| 30) L6 AR-1254-5 | 6.641 | 5.724 | 1143742 | 1571140 | 1.926 | 2.932 # |
| 31) L7 AR-1260-1 | 6.119 | 5.223 | 186862 | 1609870 | 0.334 | 4.065 # |
| 32) L7 AR-1260-2 | 6.363 | 5.408 | 689895 | 672180 | 1.030 | 1.395 # |
| 33) L7 AR-1260-3 | 6.722 | 5.553 | 952768 | 1249368 | 2.238 | 2.694 |
| 34) L7 AR-1260-4 | 6.941 | 6.009 | 457453 | 261422 | 0.914 | 0.764 |
| 35) L7 AR-1260-5 | 7.275f | 6.284f | 3612514 | 639899 | 3.695 | 0.770 # |
| 36) L8 AR-1262-1 | 6.722 | 5.769 | 952768 | 743924 | 1.435 | 1.454 |
| 37) L8 AR-1262-2 | 0.000 | 6.284f | 0 | 639899 | N.D. | 0.675 # |
| 38) L8 AR-1262-3 | 7.514 | 6.542 | 124394 | 8334748 | 0.173 | 22.519 # |
| 39) L8 AR-1262-4 | 7.585 | 6.623f | 148391 | 273827 | 0.267 | 0.387 # |
| 40) L8 AR-1262-5 | 8.089 | 7.084 | 191059 | 4053080 | 0.551 | 12.172 # |
| 41) L9 AR-1268-1 | 7.514 | 6.542 | 124394 | 8334748 | 0.099 | 7.533 # |

Data Path : Z:\pestpcbsrv\HPCHEM1\ECD_Q\Data\PQ110822\
 Data File : PQ059998.D
 Signal(s) : Signal #1: ECD1A.ch Signal #2: ECD2B.ch
 Acq On : 08 Nov 2022 20:01
 Operator : YP\AJ
 Sample : N5494-05
 Misc :
 ALS Vial : 15 Sample Multiplier: 1

Instrument :
 ECD_Q
 ClientSampleId :

Integration File signal 1: autoint1.e
 Integration File signal 2: autoint2.e
 Quant Time: Nov 08 21:24:48 2022
 Quant Method : Z:\pestpcbsrv\HPCHEM1\ECD_Q\Method\PQ110122.M
 Quant Title : GC EXTRACTABLES
 QLast Update : Tue Nov 01 17:05:38 2022
 Response via : Initial Calibration
 Integrator: ChemStation

Volume Inj. : 2 µl
 Signal #1 Phase : ZB-MR1 Signal #2 Phase: ZB-MR2
 Signal #1 Info : 30Mx0.32mmx 0.50µ Signal #2 Info : 30M x 0.32mm x 0.25µm

| | Compound | RT#1 | RT#2 | Resp#1 | Resp#2 | ng/ml | ng/ml |
|-----|--------------|--------|--------|--------|---------|-------|----------|
| 42) | L9 AR-1268-2 | 7.585 | 6.623f | 148391 | 273827 | 0.129 | 0.268 # |
| 43) | L9 AR-1268-3 | 7.766 | 6.800 | 173241 | 1976595 | 0.187 | 2.265 # |
| 44) | L9 AR-1268-4 | 8.089 | 7.084 | 191059 | 4053080 | 0.491 | 10.759 # |
| 45) | L9 AR-1268-5 | 8.404f | 7.353 | 861694 | 2988294 | 0.327 | 1.072 # |

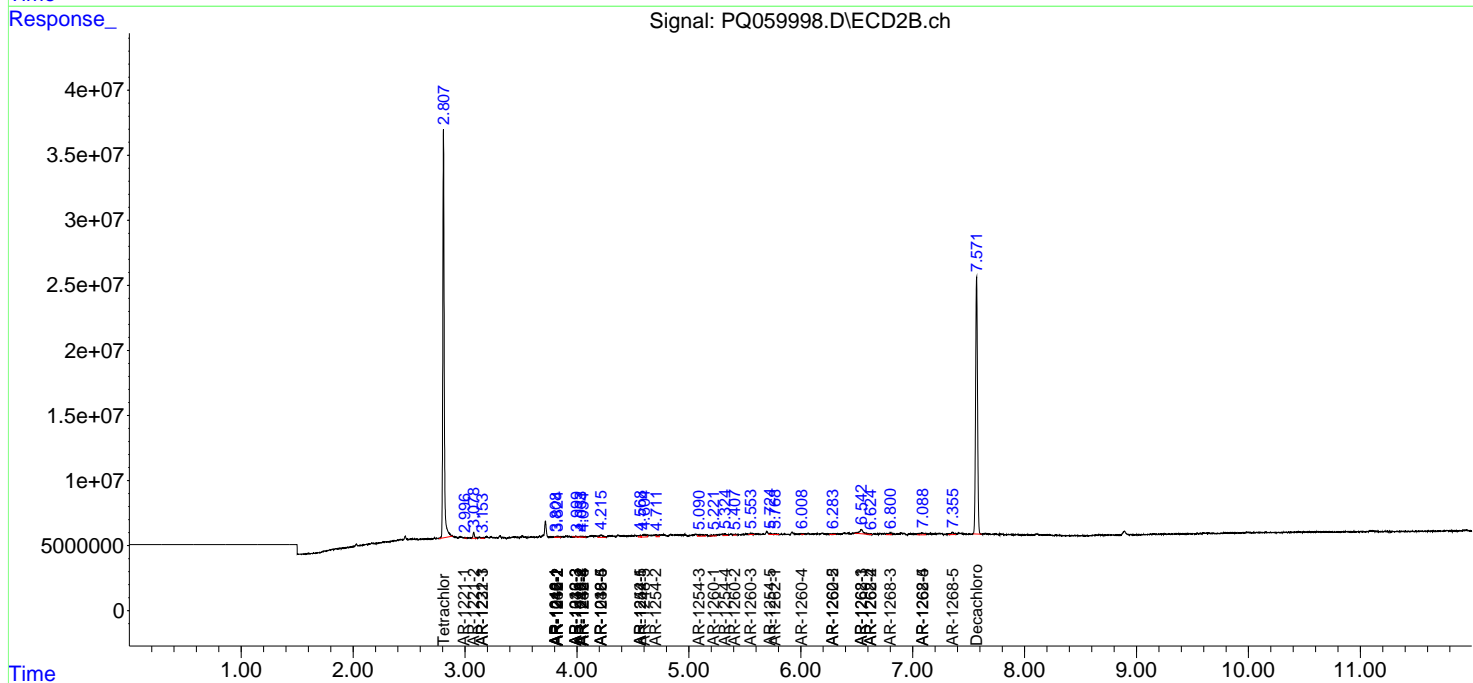
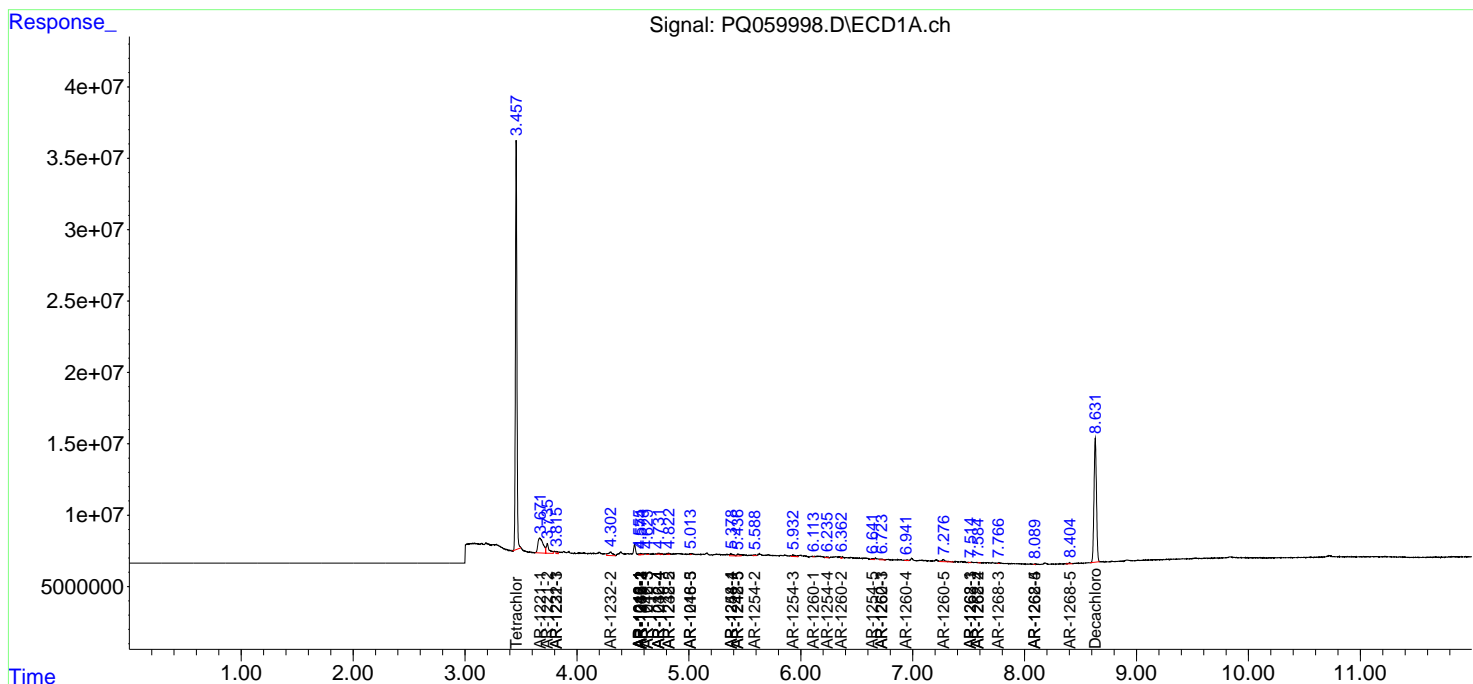
(f)=RT Delta > 1/2 Window (#)=Amounts differ by > 25% (m)=manual int.

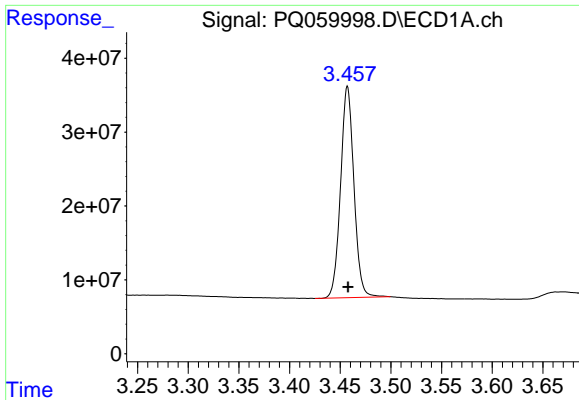
Data Path : Z:\pestpcbsrv\HPCHEM1\ECD_Q\Data\PQ110822\
 Data File : PQ059998.D
 Signal(s) : Signal #1: ECD1A.ch Signal #2: ECD2B.ch
 Acq On : 08 Nov 2022 20:01
 Operator : YP\AJ
 Sample : N5494-05
 Misc :
 ALS Vial : 15 Sample Multiplier: 1

Instrument :
 ECD_Q
 ClientSampleId :

Integration File signal 1: autoint1.e
 Integration File signal 2: autoint2.e
 Quant Time: Nov 08 21:24:48 2022
 Quant Method : Z:\pestpcbsrv\HPCHEM1\ECD_Q\Method\PQ110122.M
 Quant Title : GC EXTRACTABLES
 QLast Update : Tue Nov 01 17:05:38 2022
 Response via : Initial Calibration
 Integrator: ChemStation

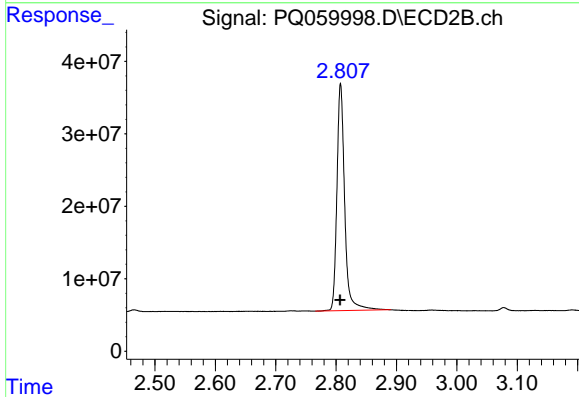
Volume Inj. : 2 µl
 Signal #1 Phase : ZB-MR1 Signal #2 Phase: ZB-MR2
 Signal #1 Info : 30Mx0.32mmx 0.50µ Signal #2 Info : 30M x 0.32mm x 0.25µm



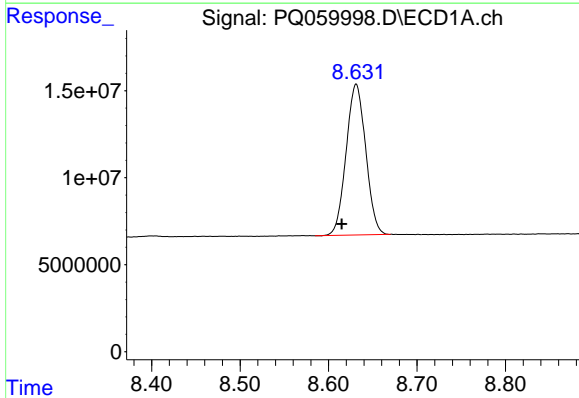


#1 Tetrachloro-m-xylene
 R.T.: 3.457 min
 Delta R.T.: 0.000 min
 Response: 262531512
 Conc: 21.76 ng/ml

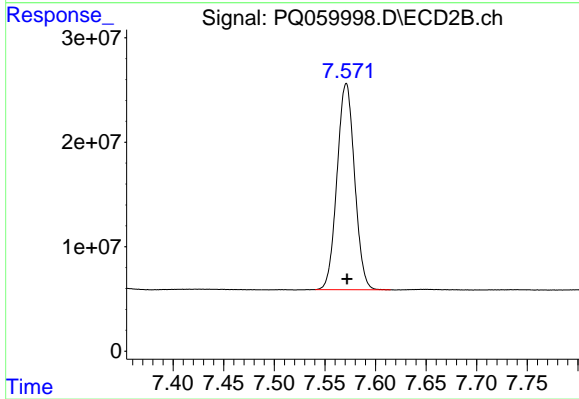
Instrument :
 ECD_Q
 ClientSampleId :



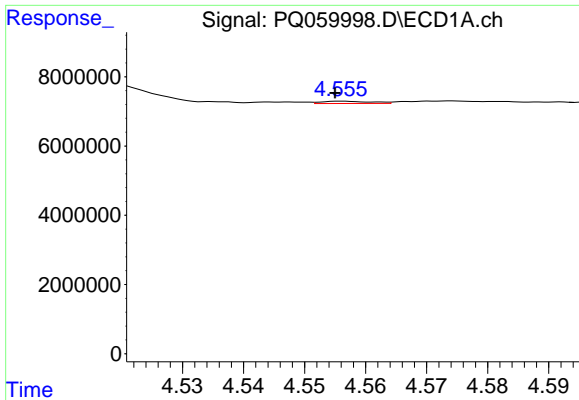
#1 Tetrachloro-m-xylene
 R.T.: 2.808 min
 Delta R.T.: 0.000 min
 Response: 280531346
 Conc: 35.36 ng/ml



#2 Decachlorobiphenyl
 R.T.: 8.631 min
 Delta R.T.: 0.016 min
 Response: 133487522
 Conc: 18.29 ng/ml



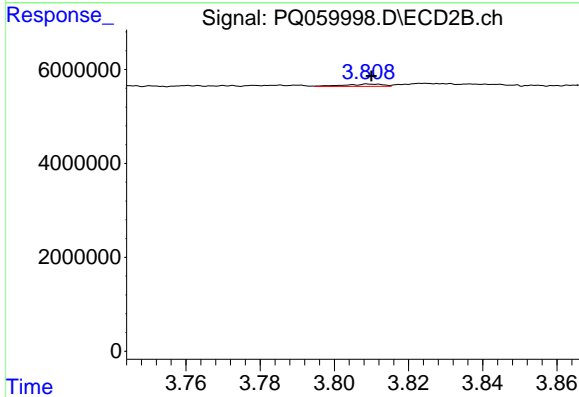
#2 Decachlorobiphenyl
 R.T.: 7.571 min
 Delta R.T.: 0.000 min
 Response: 238120963
 Conc: 32.74 ng/ml



#3 AR-1016-1

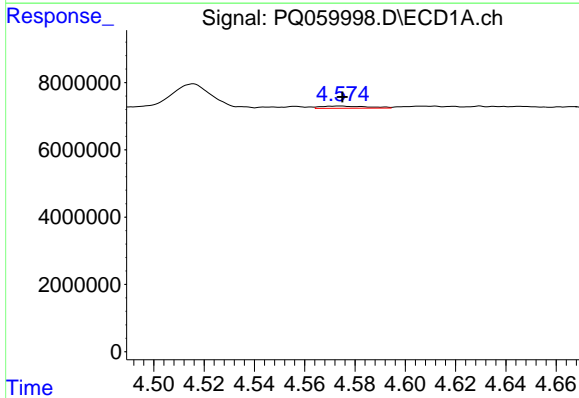
R.T.: 4.556 min
 Delta R.T.: 0.001 min
 Response: 373060
 Conc: 0.86 ng/ml

Instrument :
 ECD_Q
 ClientSampleId :



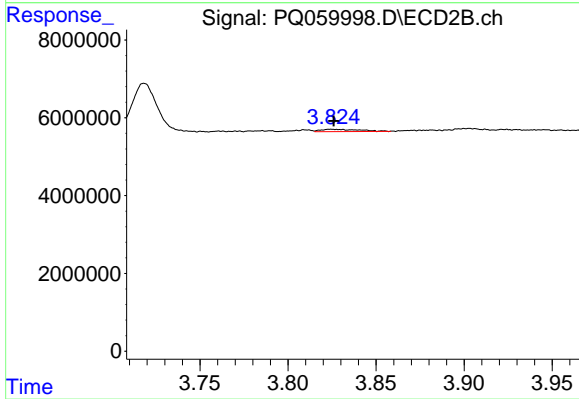
#3 AR-1016-1

R.T.: 3.810 min
 Delta R.T.: 0.000 min
 Response: 345300
 Conc: 1.30 ng/ml



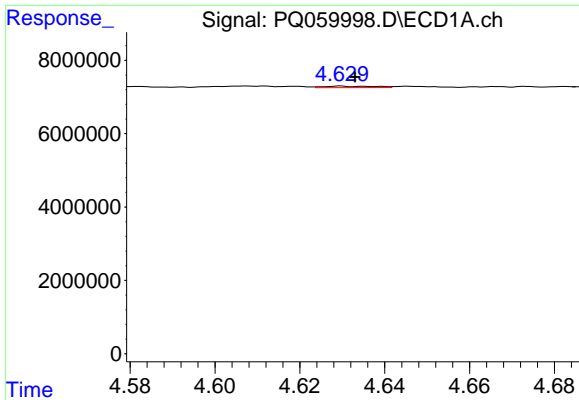
#4 AR-1016-2

R.T.: 4.574 min
 Delta R.T.: 0.000 min
 Response: 858973
 Conc: 1.37 ng/ml



#4 AR-1016-2

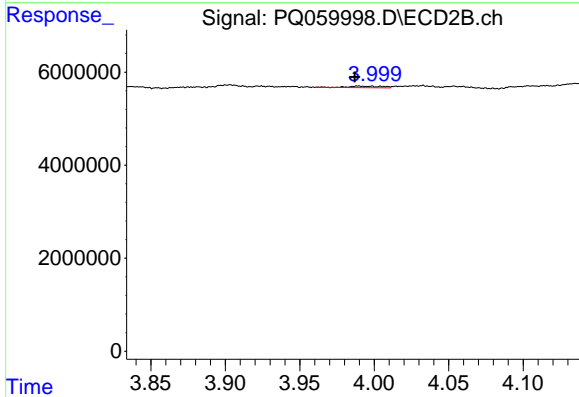
R.T.: 3.824 min
 Delta R.T.: -0.002 min
 Response: 927681
 Conc: 2.35 ng/ml



#5 AR-1016-3

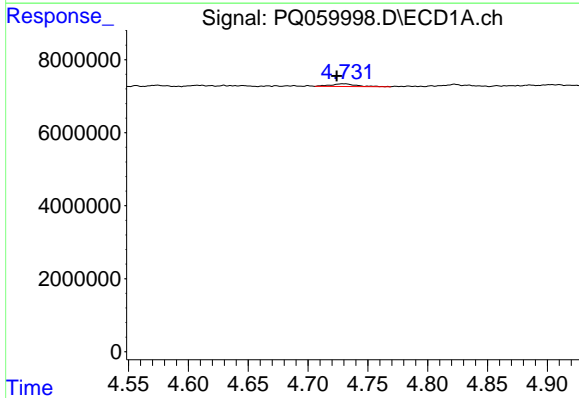
R.T.: 4.630 min
 Delta R.T.: -0.003 min
 Response: 350183
 Conc: 0.90 ng/ml

Instrument :
 ECD_Q
 ClientSampleId :



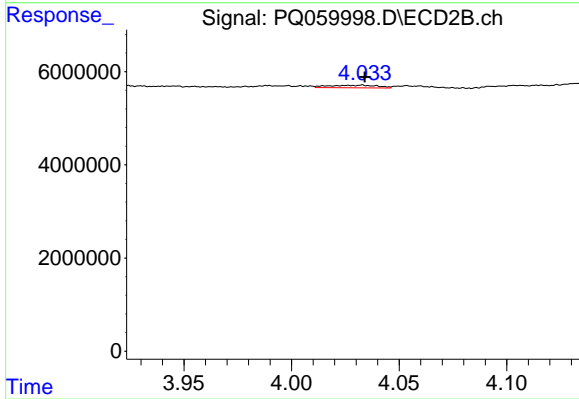
#5 AR-1016-3

R.T.: 3.989 min
 Delta R.T.: 0.002 min
 Response: 538226
 Conc: 2.63 ng/ml



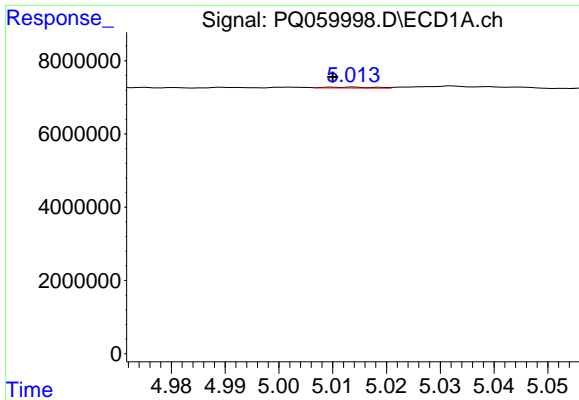
#6 AR-1016-4

R.T.: 4.730 min
 Delta R.T.: 0.006 min
 Response: 1089452
 Conc: 3.38 ng/ml



#6 AR-1016-4

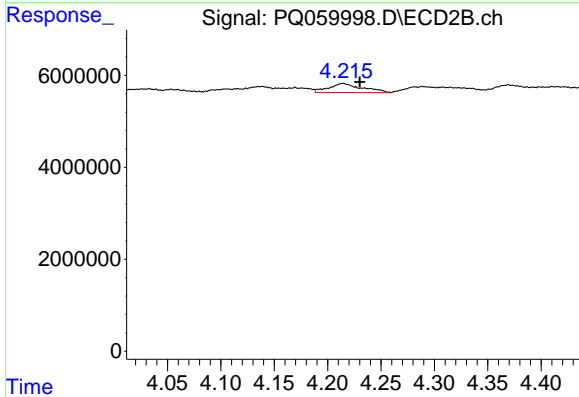
R.T.: 4.033 min
 Delta R.T.: -0.001 min
 Response: 863370
 Conc: 5.42 ng/ml



#7 AR-1016-5

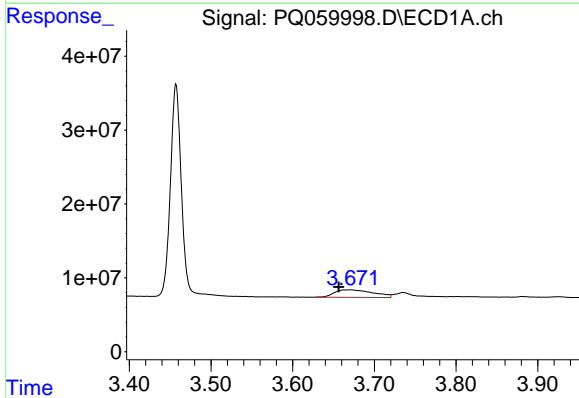
R.T.: 5.014 min
 Delta R.T.: 0.004 min
 Response: 155502
 Conc: 0.51 ng/ml

Instrument :
 ECD_Q
 ClientSampleId :



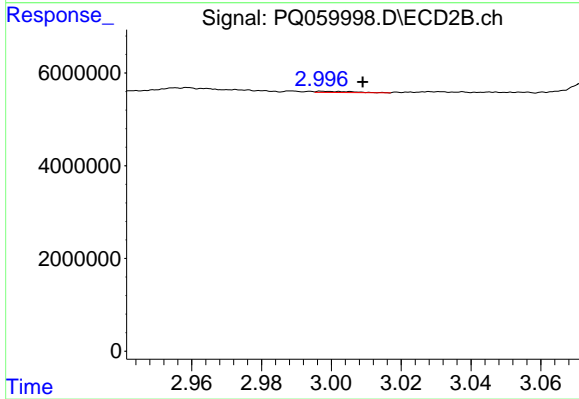
#7 AR-1016-5

R.T.: 4.215 min
 Delta R.T.: -0.015 min
 Response: 4283683
 Conc: 20.79 ng/ml



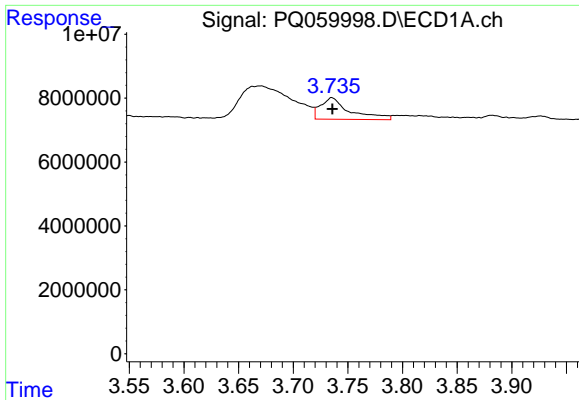
#8 AR-1221-1

R.T.: 3.670 min
 Delta R.T.: 0.013 min
 Response: 33701930
 Conc: 231.25 ng/ml



#8 AR-1221-1

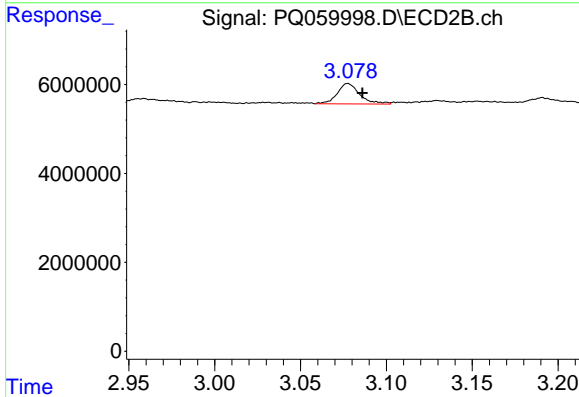
R.T.: 2.997 min
 Delta R.T.: -0.012 min
 Response: 188855
 Conc: 2.06 ng/ml



#9 AR-1221-2

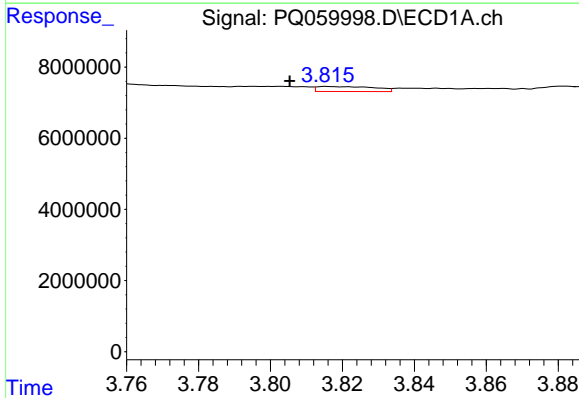
R.T.: 3.735 min
 Delta R.T.: 0.000 min
 Response: 12670003
 Conc: 115.30 ng/ml

Instrument :
 ECD_Q
 ClientSampleId :



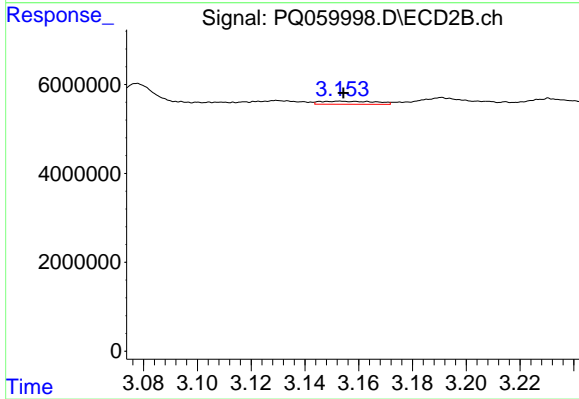
#9 AR-1221-2

R.T.: 3.078 min
 Delta R.T.: -0.008 min
 Response: 4184094
 Conc: 61.32 ng/ml



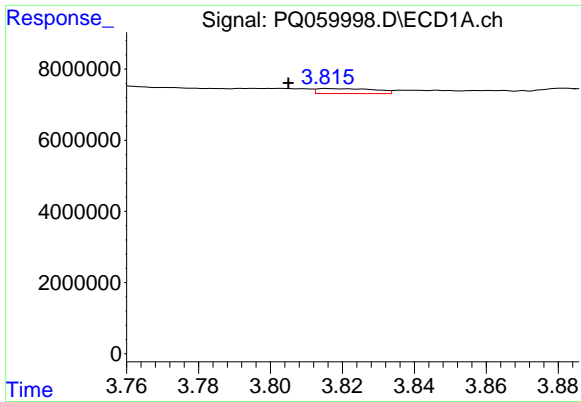
#10 AR-1221-3

R.T.: 3.816 min
 Delta R.T.: 0.010 min
 Response: 1559688
 Conc: 4.82 ng/ml



#10 AR-1221-3

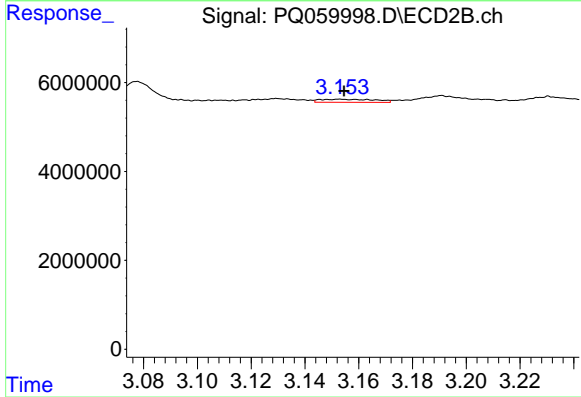
R.T.: 3.153 min
 Delta R.T.: -0.001 min
 Response: 998971
 Conc: 4.69 ng/ml



#11 AR-1232-1

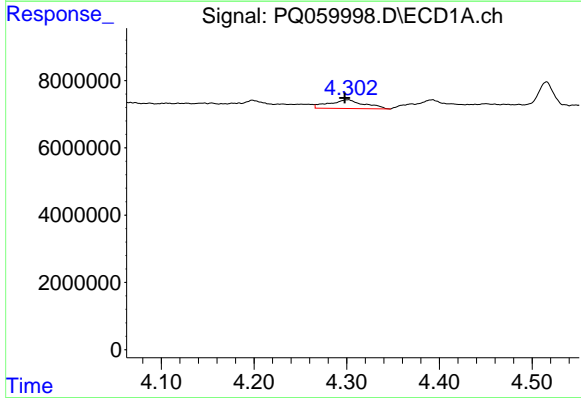
R.T.: 3.816 min
 Delta R.T.: 0.011 min
 Response: 1559688
 Conc: 6.34 ng/ml

Instrument :
 ECD_Q
 ClientSampleId :



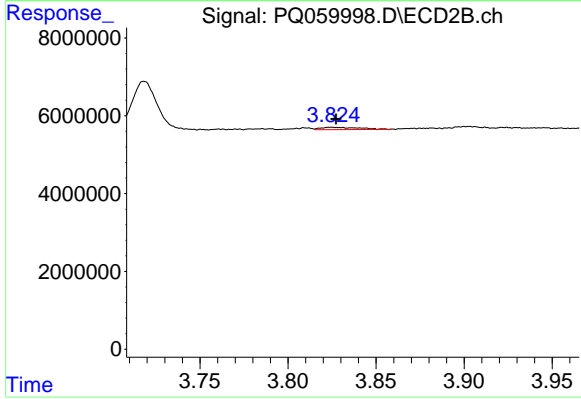
#11 AR-1232-1

R.T.: 3.153 min
 Delta R.T.: -0.001 min
 Response: 998971
 Conc: 6.16 ng/ml



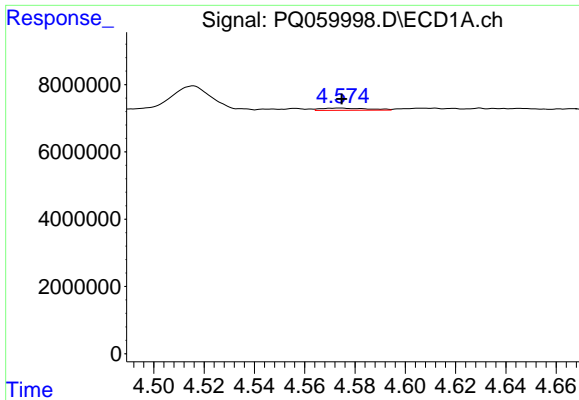
#12 AR-1232-2

R.T.: 4.301 min
 Delta R.T.: 0.003 min
 Response: 6767842
 Conc: 44.57 ng/ml



#12 AR-1232-2

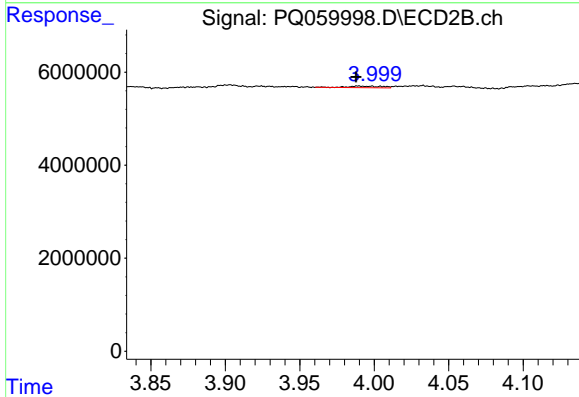
R.T.: 3.824 min
 Delta R.T.: -0.003 min
 Response: 927681
 Conc: 5.39 ng/ml



#13 AR-1232-3

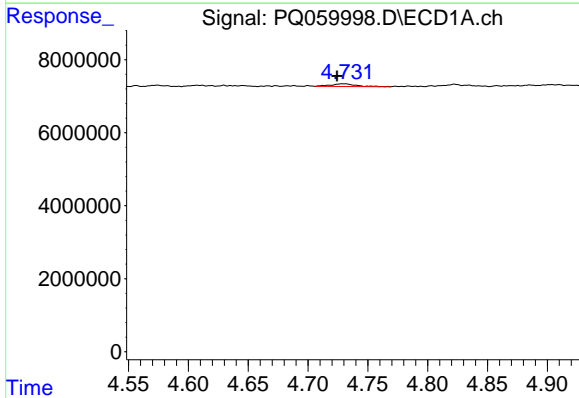
R.T.: 4.574 min
 Delta R.T.: 0.000 min
 Response: 858973
 Conc: 3.17 ng/ml

Instrument :
 ECD_Q
 ClientSampleId :



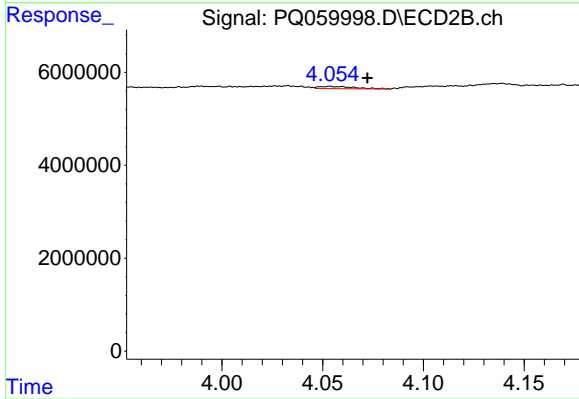
#13 AR-1232-3

R.T.: 3.989 min
 Delta R.T.: 0.001 min
 Response: 538226
 Conc: 6.01 ng/ml



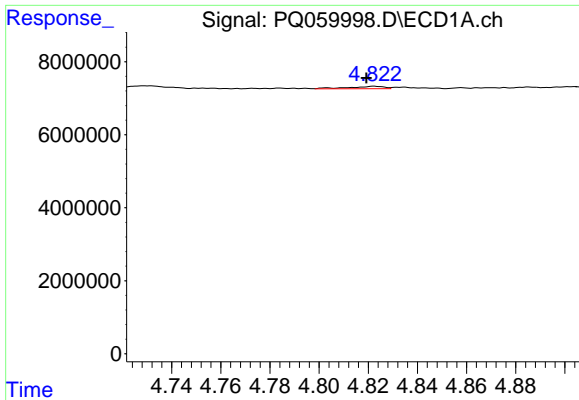
#14 AR-1232-4

R.T.: 4.730 min
 Delta R.T.: 0.006 min
 Response: 1089452
 Conc: 7.70 ng/ml



#14 AR-1232-4

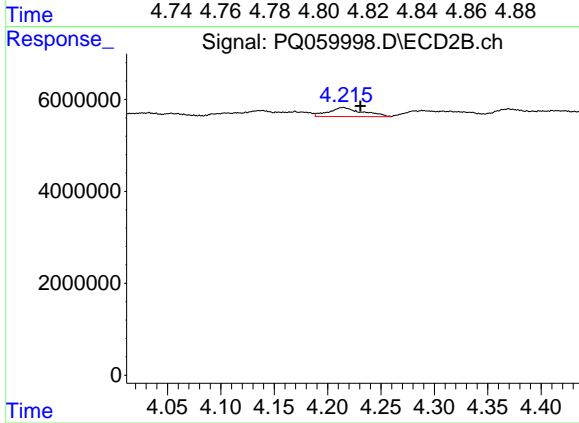
R.T.: 4.054 min
 Delta R.T.: -0.019 min
 Response: 610508
 Conc: 8.30 ng/ml



#15 AR-1232-5

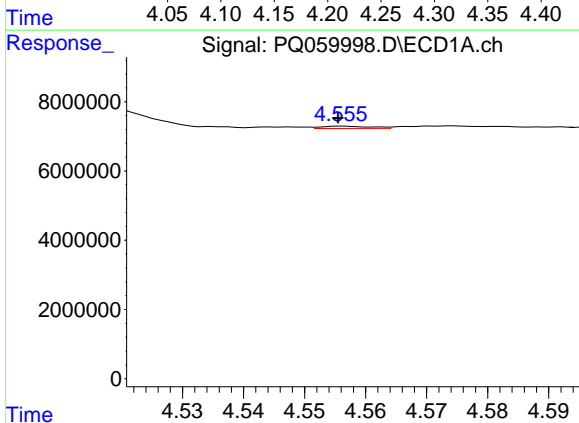
R.T.: 4.823 min
 Delta R.T.: 0.003 min
 Response: 662012
 Conc: 6.68 ng/ml

Instrument :
 ECD_Q
 ClientSampleId :



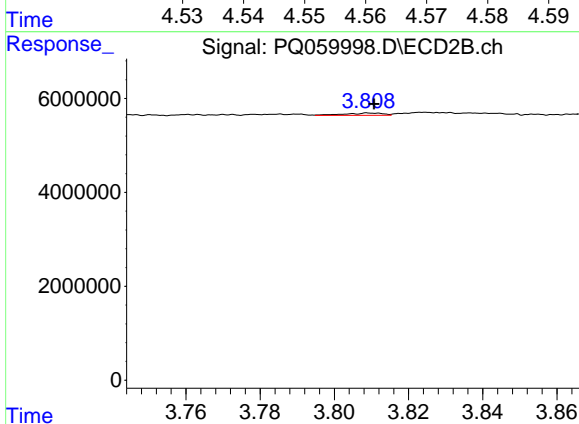
#15 AR-1232-5

R.T.: 4.215 min
 Delta R.T.: -0.016 min
 Response: 4283683
 Conc: 48.55 ng/ml



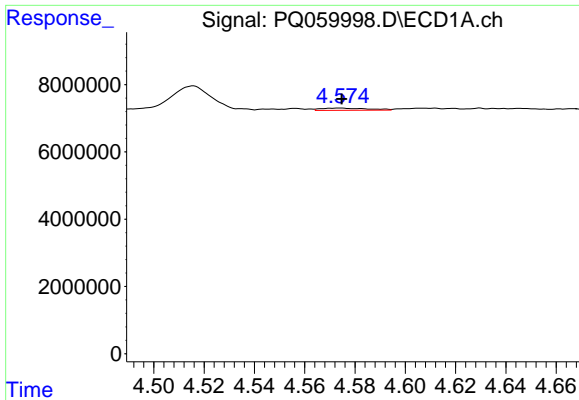
#16 AR-1242-1

R.T.: 4.556 min
 Delta R.T.: 0.000 min
 Response: 373060
 Conc: 1.11 ng/ml



#16 AR-1242-1

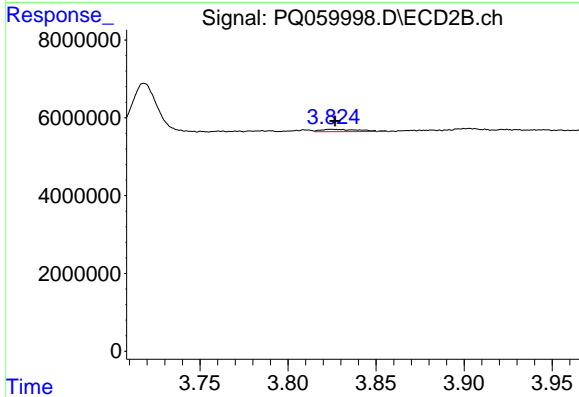
R.T.: 3.810 min
 Delta R.T.: 0.000 min
 Response: 345300
 Conc: 1.68 ng/ml



#17 AR-1242-2

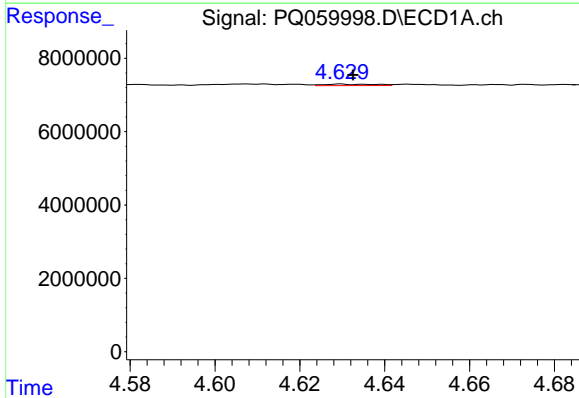
R.T.: 4.574 min
 Delta R.T.: 0.000 min
 Response: 858973
 Conc: 1.76 ng/ml

Instrument :
 ECD_Q
 ClientSampleId :



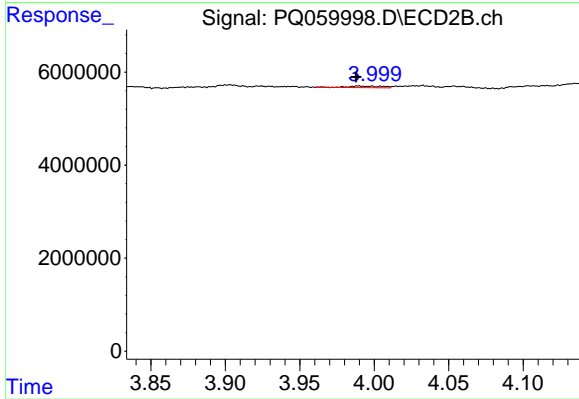
#17 AR-1242-2

R.T.: 3.824 min
 Delta R.T.: -0.002 min
 Response: 927681
 Conc: 3.02 ng/ml



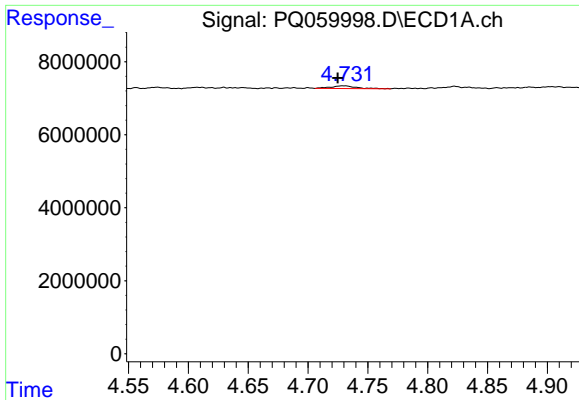
#18 AR-1242-3

R.T.: 4.630 min
 Delta R.T.: -0.003 min
 Response: 350183
 Conc: 1.17 ng/ml



#18 AR-1242-3

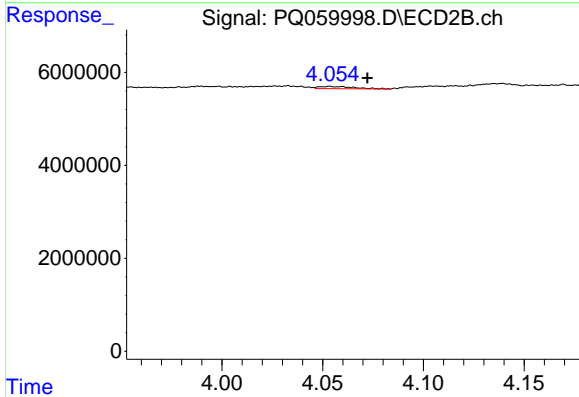
R.T.: 3.989 min
 Delta R.T.: 0.002 min
 Response: 538226
 Conc: 3.37 ng/ml



#19 AR-1242-4

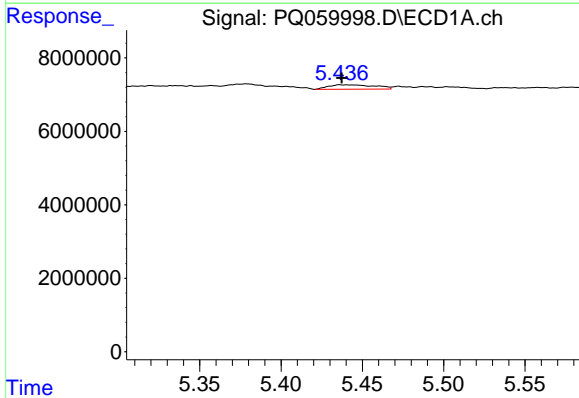
R.T.: 4.730 min
 Delta R.T.: 0.005 min
 Response: 1089452
 Conc: 4.32 ng/ml

Instrument :
 ECD_Q
 ClientSampleId :



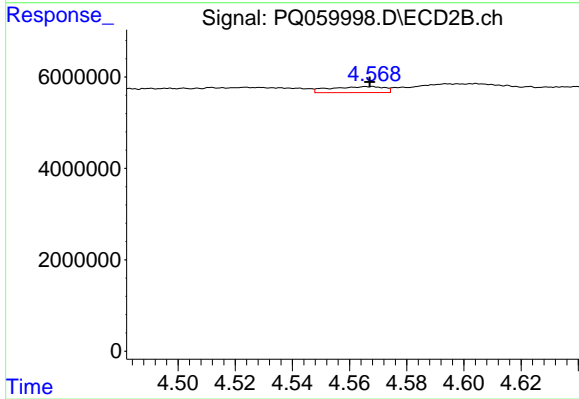
#19 AR-1242-4

R.T.: 4.054 min
 Delta R.T.: -0.019 min
 Response: 610508
 Conc: 4.16 ng/ml



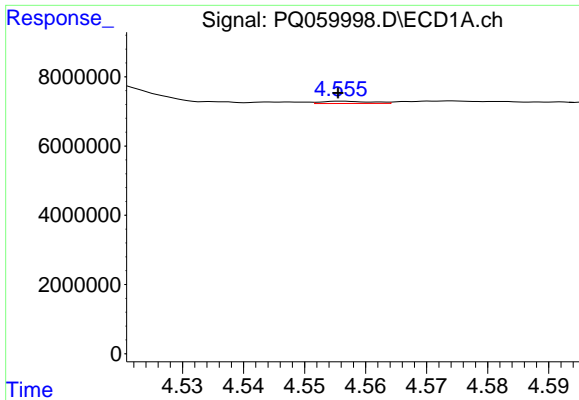
#20 AR-1242-5

R.T.: 5.437 min
 Delta R.T.: 0.000 min
 Response: 2404501
 Conc: 9.04 ng/ml



#20 AR-1242-5

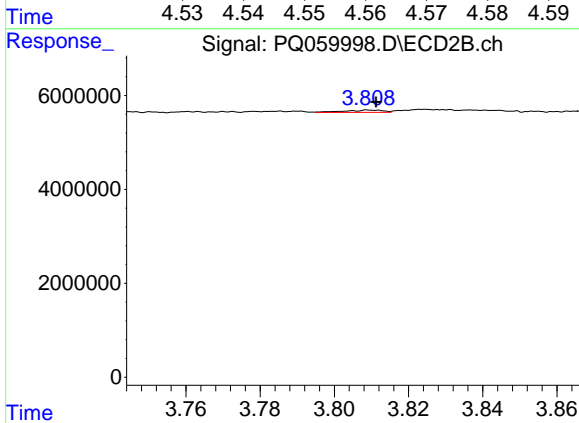
R.T.: 4.567 min
 Delta R.T.: 0.000 min
 Response: 1725113
 Conc: 8.41 ng/ml



#21 AR-1248-1

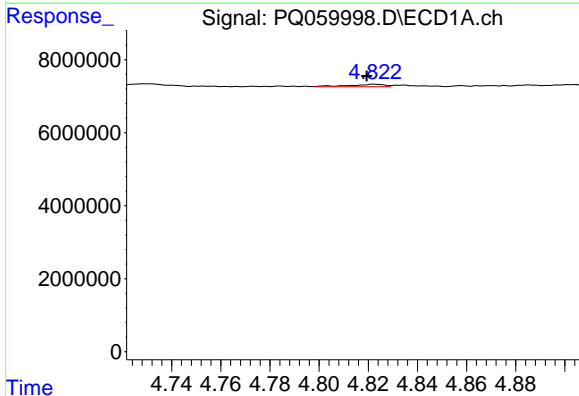
R.T.: 4.556 min
 Delta R.T.: 0.000 min
 Response: 373060
 Conc: 1.46 ng/ml

Instrument :
 ECD_Q
 ClientSampleId :



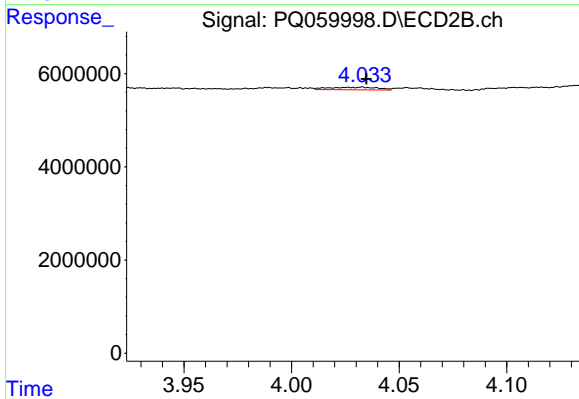
#21 AR-1248-1

R.T.: 3.810 min
 Delta R.T.: -0.001 min
 Response: 345300
 Conc: 2.18 ng/ml



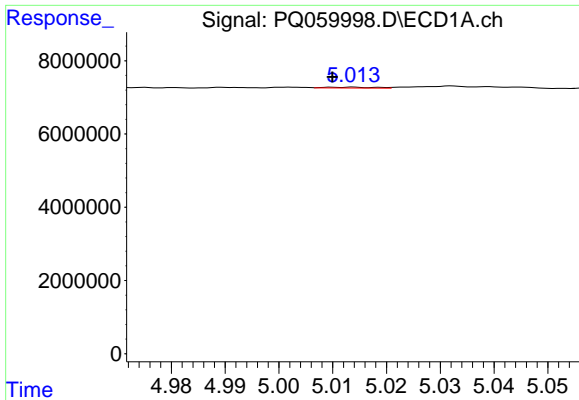
#22 AR-1248-2

R.T.: 4.823 min
 Delta R.T.: 0.003 min
 Response: 662012
 Conc: 2.03 ng/ml



#22 AR-1248-2

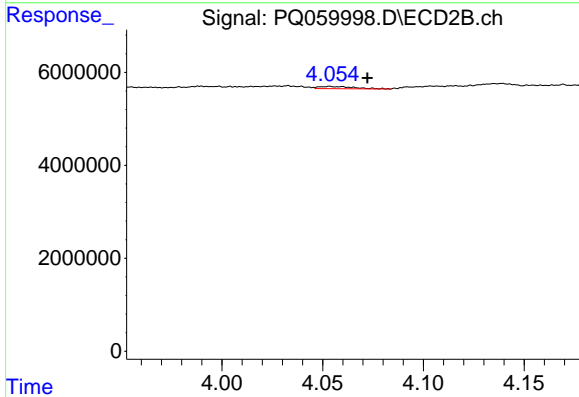
R.T.: 4.033 min
 Delta R.T.: -0.002 min
 Response: 863370
 Conc: 4.00 ng/ml



#23 AR-1248-3

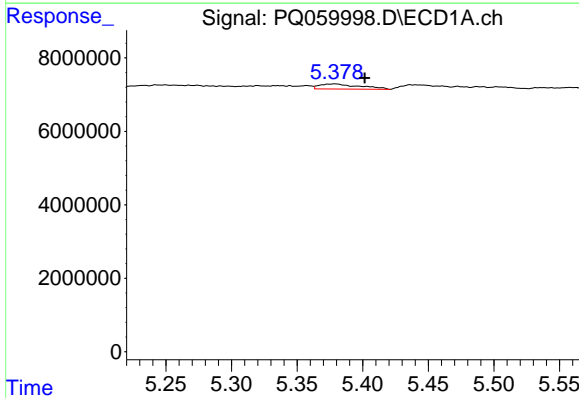
R.T.: 5.014 min
 Delta R.T.: 0.004 min
 Response: 155502
 Conc: 0.40 ng/ml

Instrument :
 ECD_Q
 ClientSampleId :



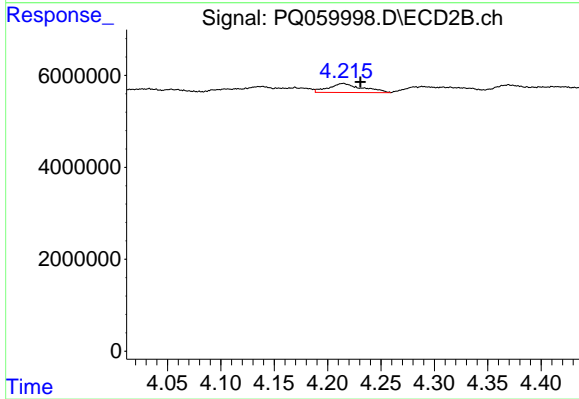
#23 AR-1248-3

R.T.: 4.054 min
 Delta R.T.: -0.019 min
 Response: 610508
 Conc: 2.90 ng/ml



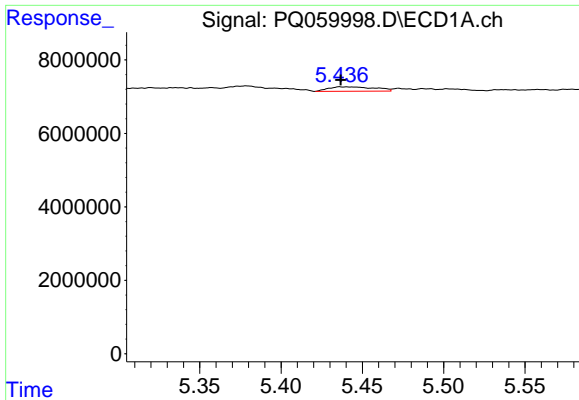
#24 AR-1248-4

R.T.: 5.379 min
 Delta R.T.: -0.023 min
 Response: 2925449
 Conc: 6.61 ng/ml



#24 AR-1248-4

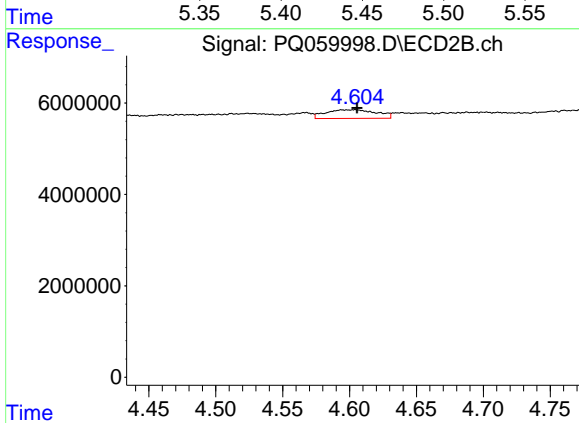
R.T.: 4.215 min
 Delta R.T.: -0.016 min
 Response: 4283683
 Conc: 16.10 ng/ml



#25 AR-1248-5

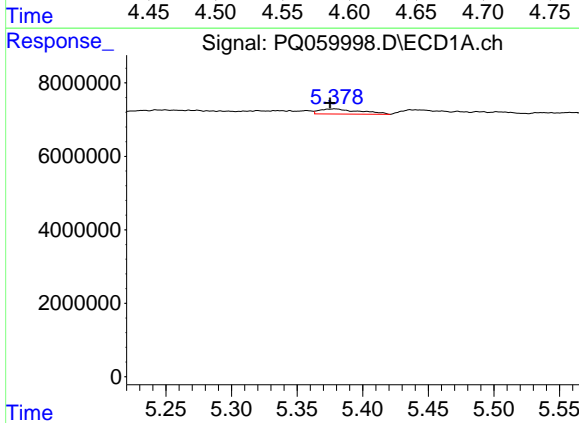
R.T.: 5.437 min
 Delta R.T.: 0.000 min
 Response: 2404501
 Conc: 5.51 ng/ml

Instrument :
 ECD_Q
 ClientSampleId :



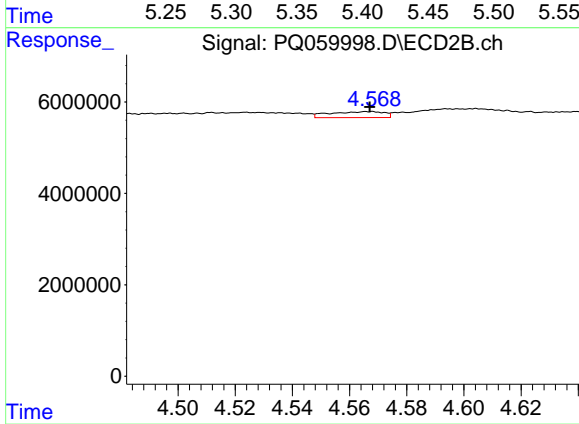
#25 AR-1248-5

R.T.: 4.604 min
 Delta R.T.: -0.001 min
 Response: 5031092
 Conc: 19.18 ng/ml



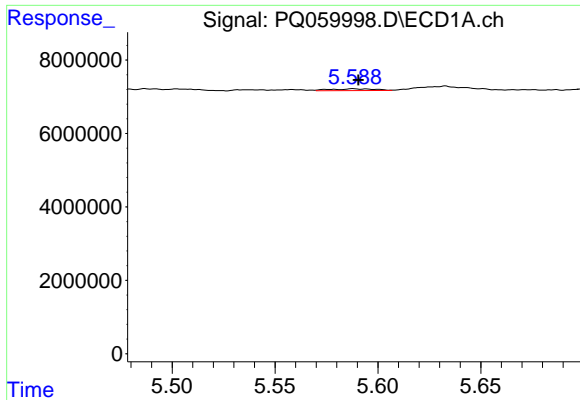
#26 AR-1254-1

R.T.: 5.379 min
 Delta R.T.: 0.004 min
 Response: 2925449
 Conc: 6.47 ng/ml



#26 AR-1254-1

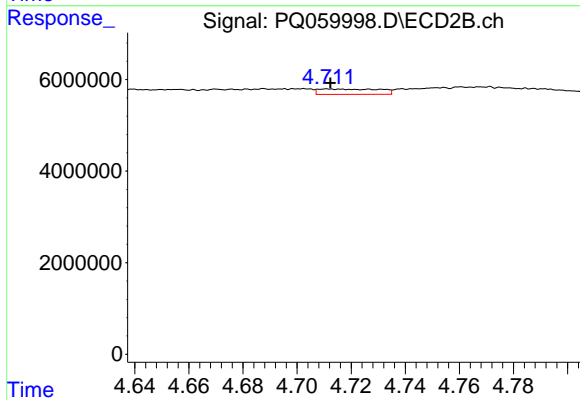
R.T.: 4.567 min
 Delta R.T.: 0.000 min
 Response: 1725113
 Conc: 4.24 ng/ml



#27 AR-1254-2

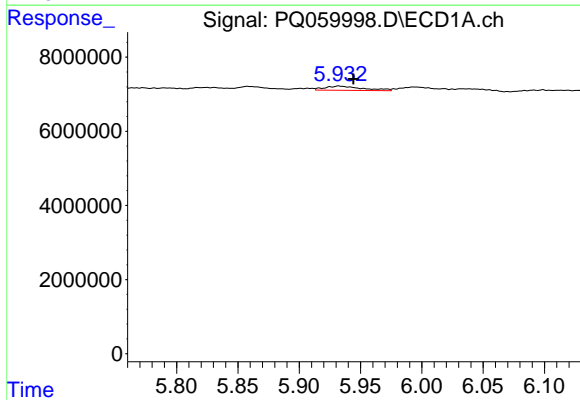
R.T.: 5.588 min
 Delta R.T.: -0.003 min
 Response: 720004
 Conc: 1.04 ng/ml

Instrument :
 ECD_Q
 ClientSampleId :



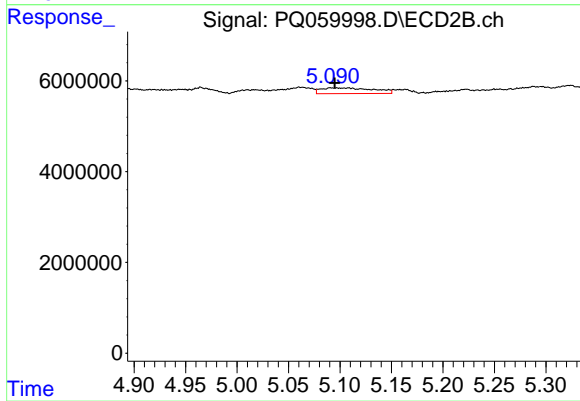
#27 AR-1254-2

R.T.: 4.711 min
 Delta R.T.: -0.001 min
 Response: 1853949
 Conc: 5.15 ng/ml



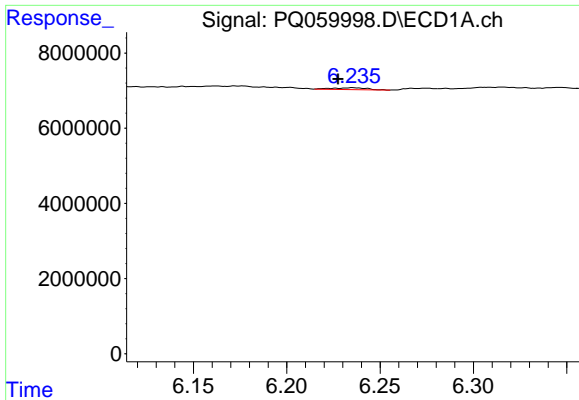
#28 AR-1254-3

R.T.: 5.932 min
 Delta R.T.: -0.012 min
 Response: 2414710
 Conc: 3.31 ng/ml



#28 AR-1254-3

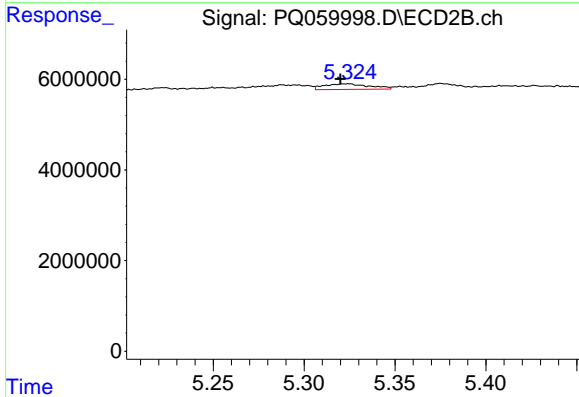
R.T.: 5.097 min
 Delta R.T.: 0.002 min
 Response: 4508576
 Conc: 7.86 ng/ml



#29 AR-1254-4

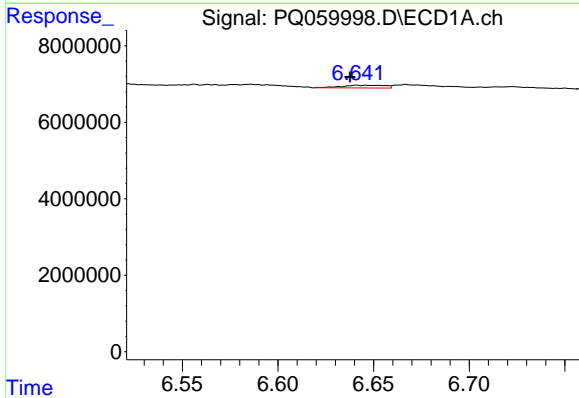
R.T.: 6.235 min
 Delta R.T.: 0.008 min
 Response: 628132
 Conc: 1.17 ng/ml

Instrument :
 ECD_Q
 ClientSampleId :



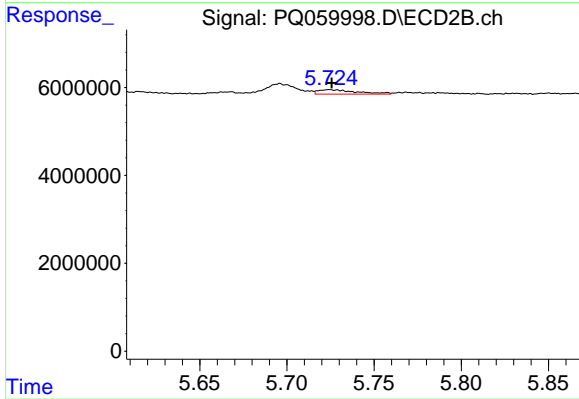
#29 AR-1254-4

R.T.: 5.324 min
 Delta R.T.: 0.004 min
 Response: 2157281
 Conc: 5.92 ng/ml



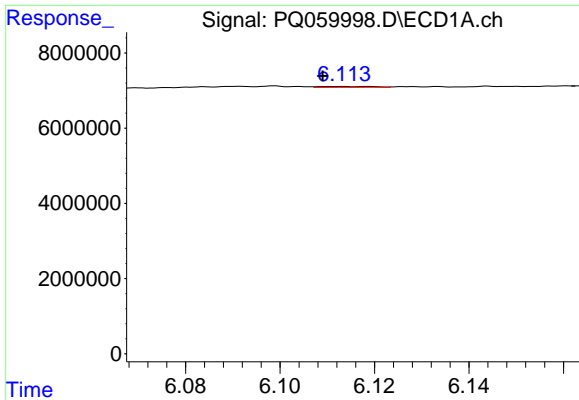
#30 AR-1254-5

R.T.: 6.641 min
 Delta R.T.: 0.003 min
 Response: 1143742
 Conc: 1.93 ng/ml



#30 AR-1254-5

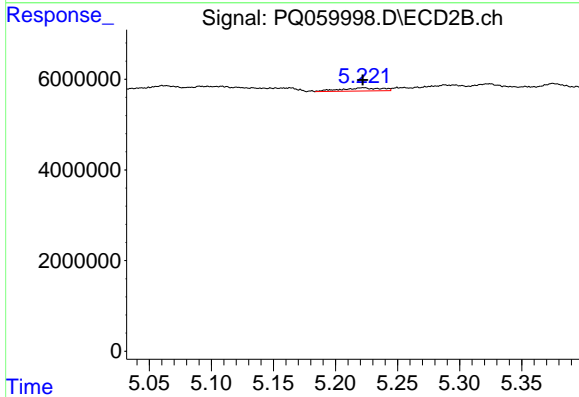
R.T.: 5.724 min
 Delta R.T.: -0.002 min
 Response: 1571140
 Conc: 2.93 ng/ml



#31 AR-1260-1

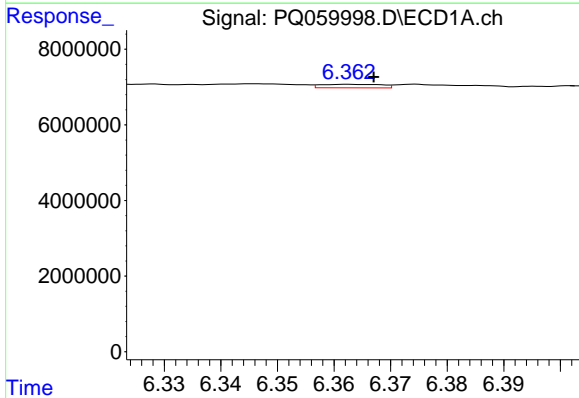
R.T.: 6.119 min
 Delta R.T.: 0.010 min
 Response: 186862
 Conc: 0.33 ng/ml

Instrument :
 ECD_Q
 ClientSampleId :



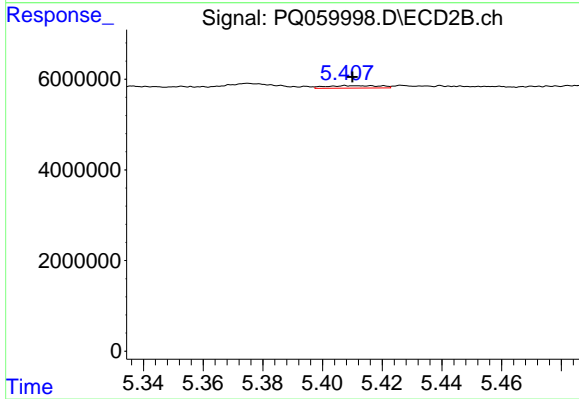
#31 AR-1260-1

R.T.: 5.223 min
 Delta R.T.: 0.000 min
 Response: 1609870
 Conc: 4.06 ng/ml



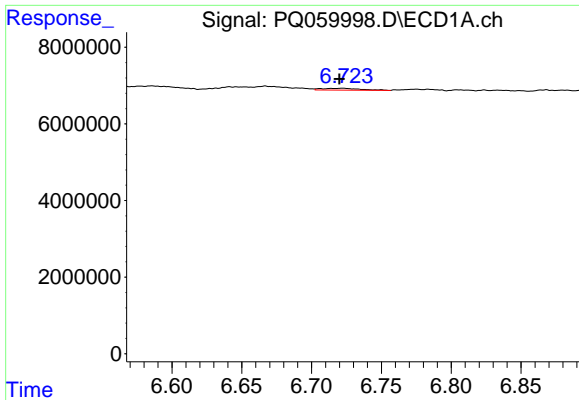
#32 AR-1260-2

R.T.: 6.363 min
 Delta R.T.: -0.004 min
 Response: 689895
 Conc: 1.03 ng/ml



#32 AR-1260-2

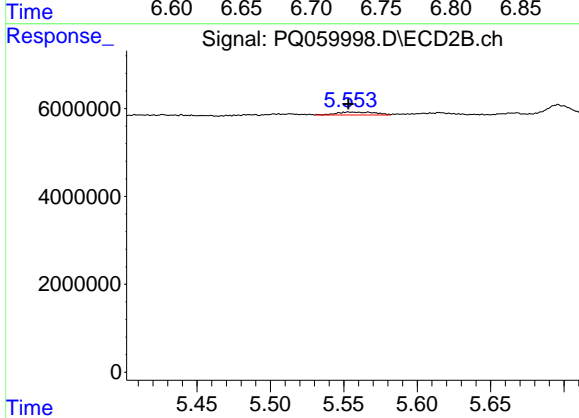
R.T.: 5.408 min
 Delta R.T.: -0.002 min
 Response: 672180
 Conc: 1.40 ng/ml



#33 AR-1260-3

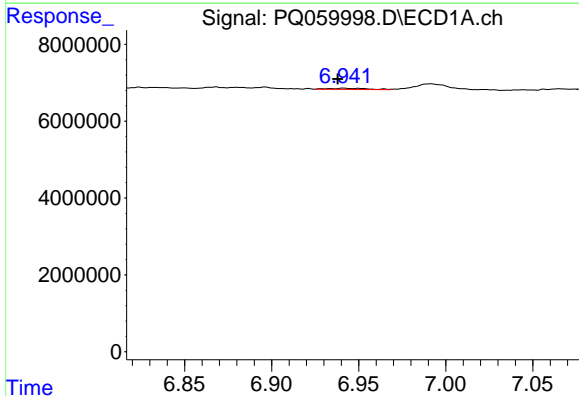
R.T.: 6.722 min
 Delta R.T.: 0.002 min
 Response: 952768
 Conc: 2.24 ng/ml

Instrument :
 ECD_Q
 ClientSampleId :



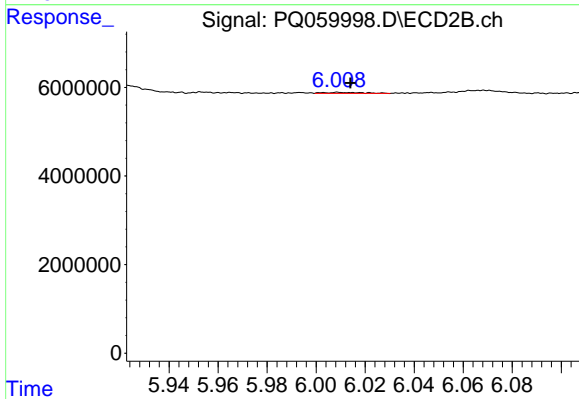
#33 AR-1260-3

R.T.: 5.553 min
 Delta R.T.: 0.000 min
 Response: 1249368
 Conc: 2.69 ng/ml



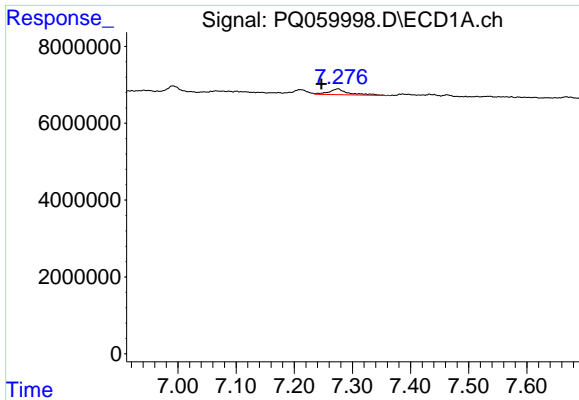
#34 AR-1260-4

R.T.: 6.941 min
 Delta R.T.: 0.003 min
 Response: 457453
 Conc: 0.91 ng/ml



#34 AR-1260-4

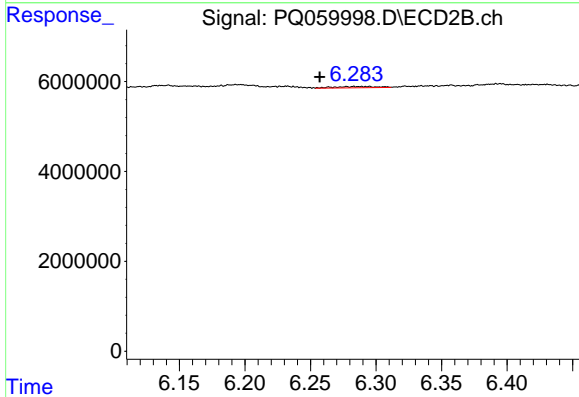
R.T.: 6.009 min
 Delta R.T.: -0.005 min
 Response: 261422
 Conc: 0.76 ng/ml



#35 AR-1260-5

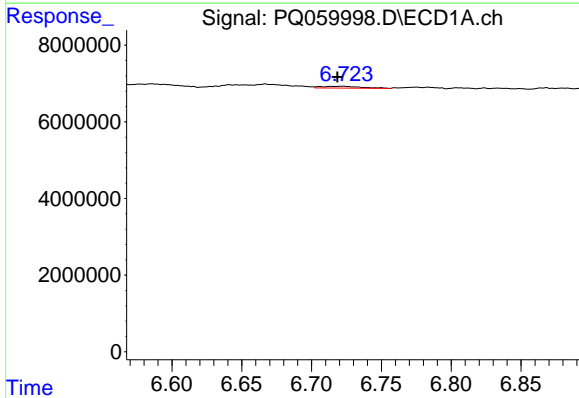
R.T.: 7.275 min
 Delta R.T.: 0.028 min
 Response: 3612514
 Conc: 3.70 ng/ml

Instrument :
 ECD_Q
 ClientSampleId :



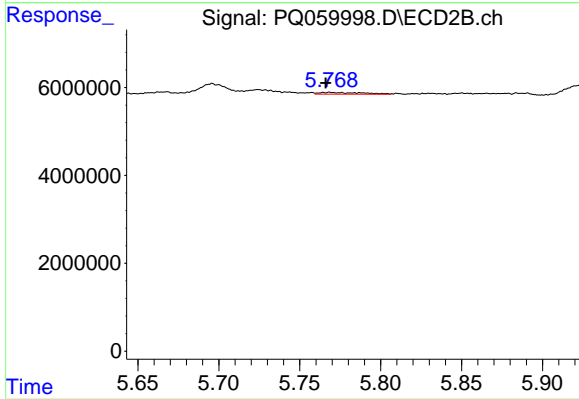
#35 AR-1260-5

R.T.: 6.284 min
 Delta R.T.: 0.027 min
 Response: 639899
 Conc: 0.77 ng/ml



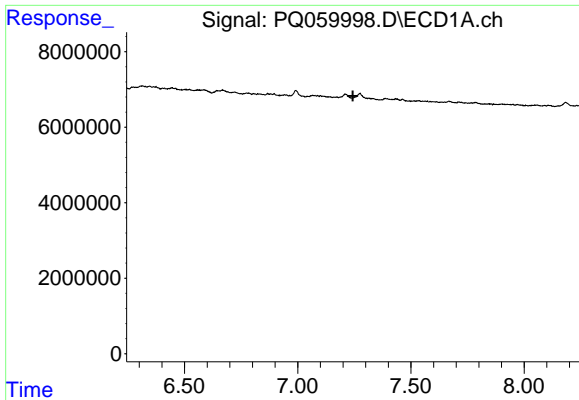
#36 AR-1262-1

R.T.: 6.722 min
 Delta R.T.: 0.004 min
 Response: 952768
 Conc: 1.44 ng/ml



#36 AR-1262-1

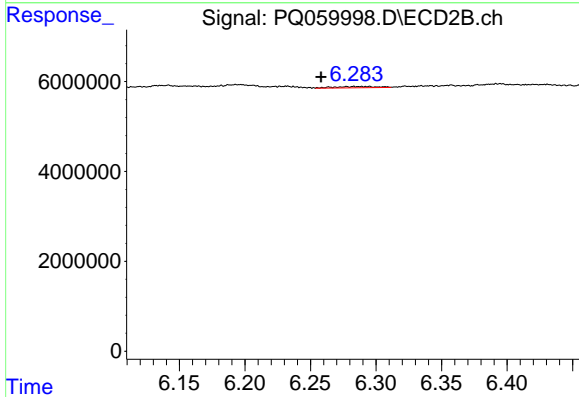
R.T.: 5.769 min
 Delta R.T.: 0.003 min
 Response: 743924
 Conc: 1.45 ng/ml



#37 AR-1262-2

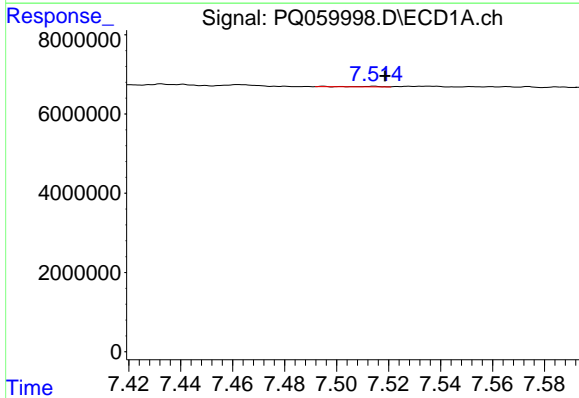
R.T.: 0.000 min
 Exp R.T.: 7.243 min
 Response: 0
 Conc: N.D.

Instrument :
 ECD_Q
 ClientSampleId :



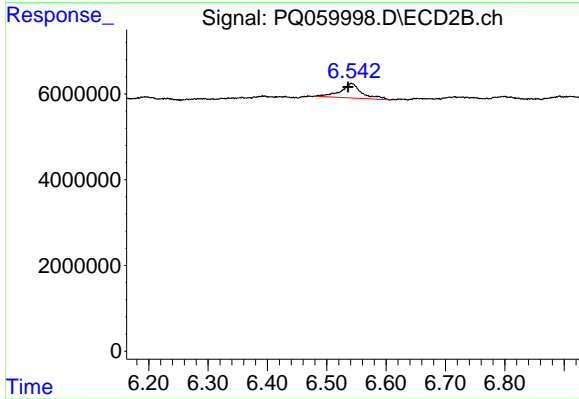
#37 AR-1262-2

R.T.: 6.284 min
 Delta R.T.: 0.025 min
 Response: 639899
 Conc: 0.67 ng/ml



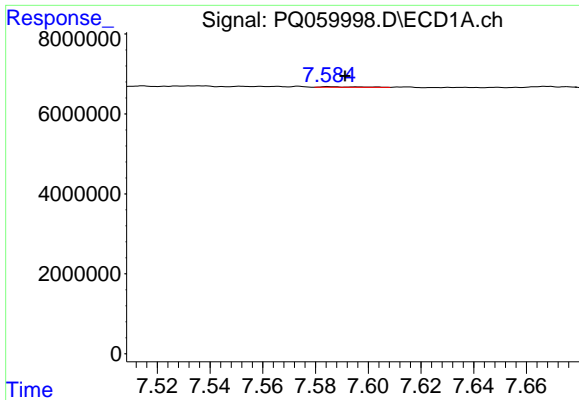
#38 AR-1262-3

R.T.: 7.514 min
 Delta R.T.: -0.004 min
 Response: 124394
 Conc: 0.17 ng/ml



#38 AR-1262-3

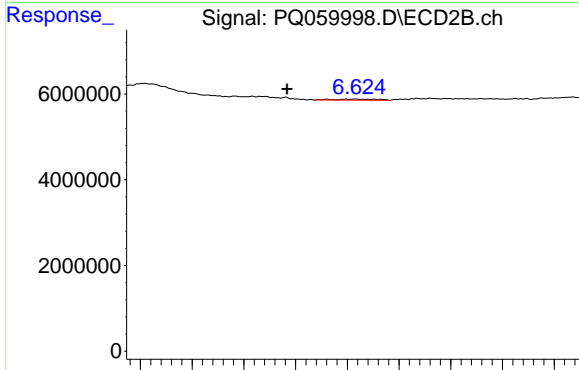
R.T.: 6.542 min
 Delta R.T.: 0.006 min
 Response: 8334748
 Conc: 22.52 ng/ml



#39 AR-1262-4

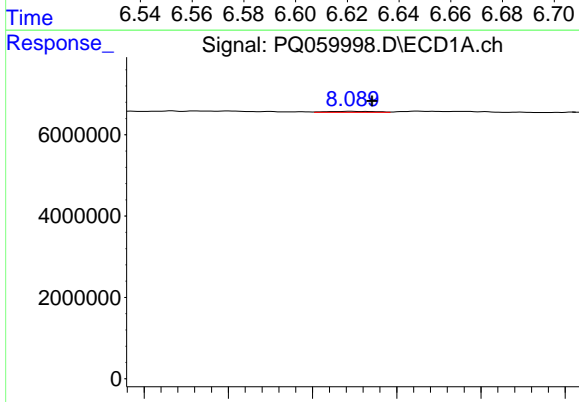
R.T.: 7.585 min
 Delta R.T.: -0.006 min
 Response: 148391
 Conc: 0.27 ng/ml

Instrument :
 ECD_Q
 ClientSampleId :



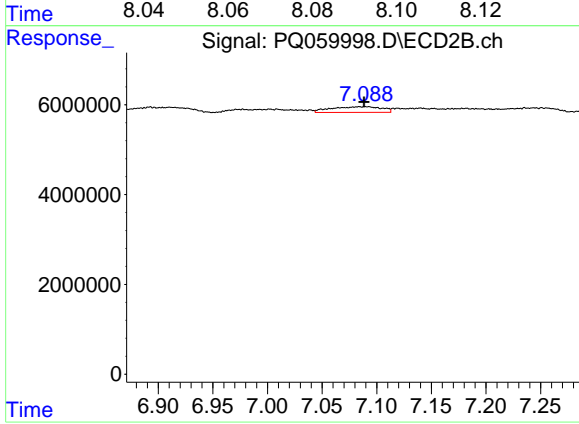
#39 AR-1262-4

R.T.: 6.623 min
 Delta R.T.: 0.027 min
 Response: 273827
 Conc: 0.39 ng/ml



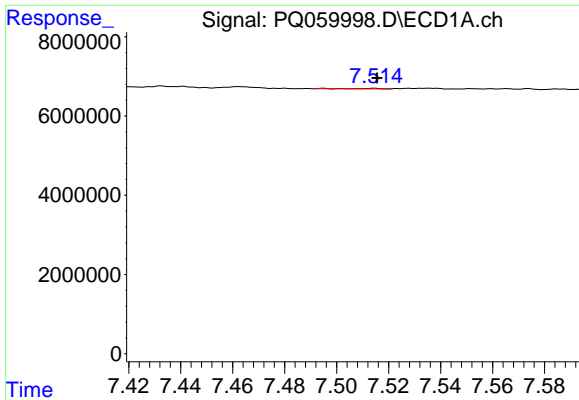
#40 AR-1262-5

R.T.: 8.089 min
 Delta R.T.: -0.005 min
 Response: 191059
 Conc: 0.55 ng/ml



#40 AR-1262-5

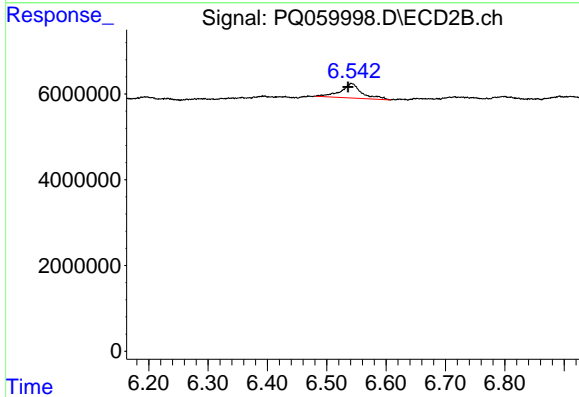
R.T.: 7.084 min
 Delta R.T.: -0.004 min
 Response: 4053080
 Conc: 12.17 ng/ml



#41 AR-1268-1

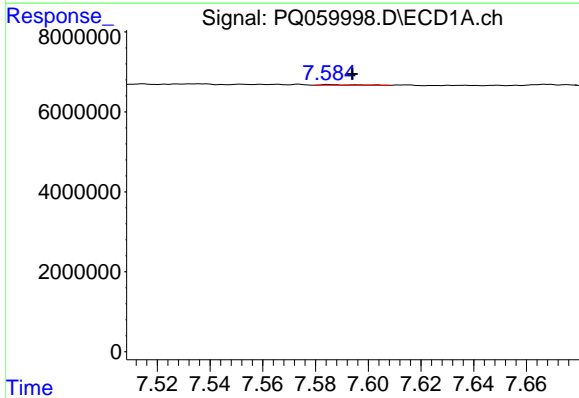
R.T.: 7.514 min
 Delta R.T.: -0.001 min
 Response: 124394
 Conc: 0.10 ng/ml

Instrument :
 ECD_Q
 ClientSampleId :



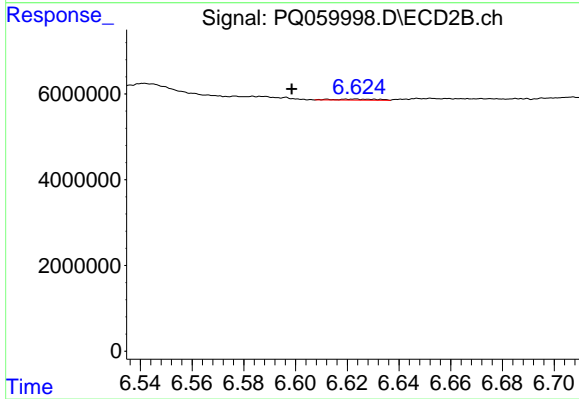
#41 AR-1268-1

R.T.: 6.542 min
 Delta R.T.: 0.006 min
 Response: 8334748
 Conc: 7.53 ng/ml



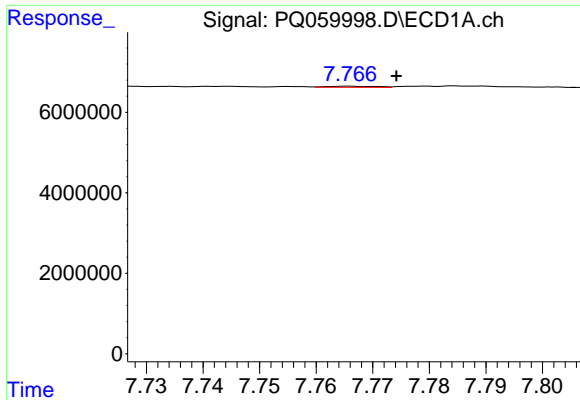
#42 AR-1268-2

R.T.: 7.585 min
 Delta R.T.: -0.009 min
 Response: 148391
 Conc: 0.13 ng/ml



#42 AR-1268-2

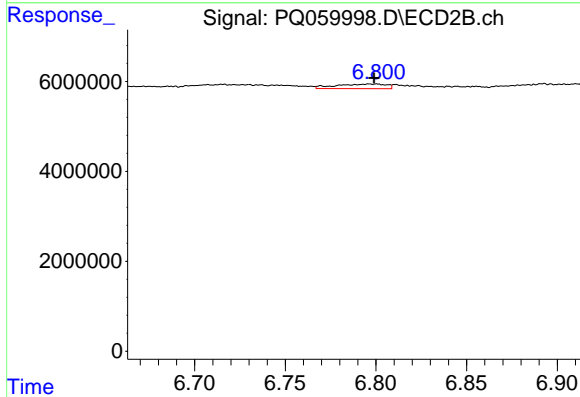
R.T.: 6.623 min
 Delta R.T.: 0.025 min
 Response: 273827
 Conc: 0.27 ng/ml



#43 AR-1268-3

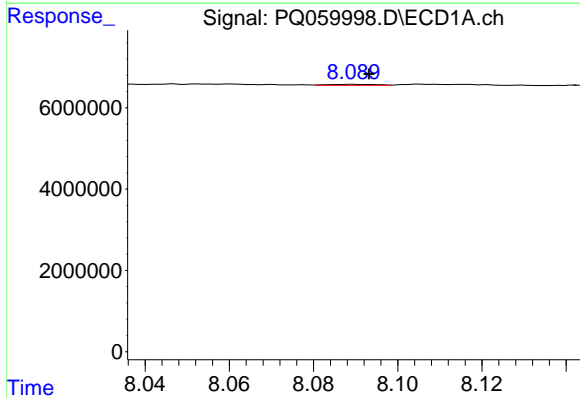
R.T.: 7.766 min
 Delta R.T.: -0.008 min
 Response: 173241
 Conc: 0.19 ng/ml

Instrument :
 ECD_Q
 ClientSampleId :



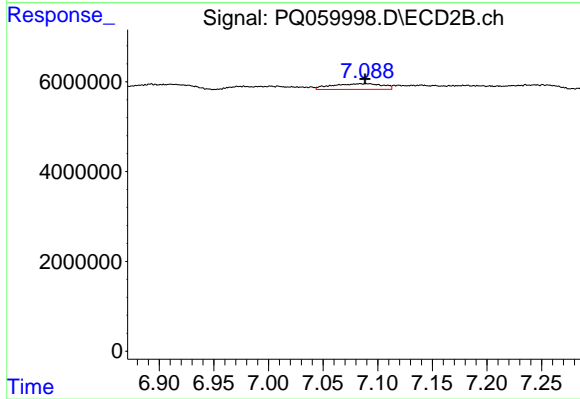
#43 AR-1268-3

R.T.: 6.800 min
 Delta R.T.: 0.001 min
 Response: 1976595
 Conc: 2.26 ng/ml



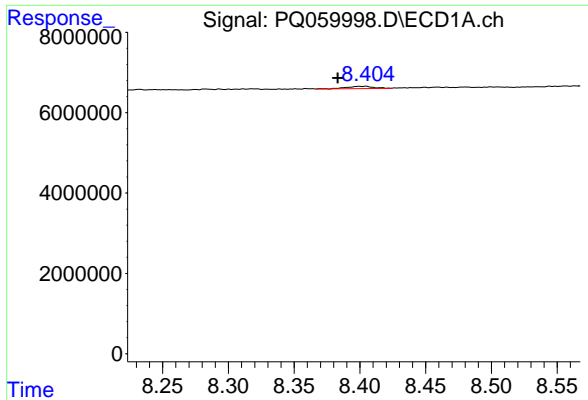
#44 AR-1268-4

R.T.: 8.089 min
 Delta R.T.: -0.004 min
 Response: 191059
 Conc: 0.49 ng/ml



#44 AR-1268-4

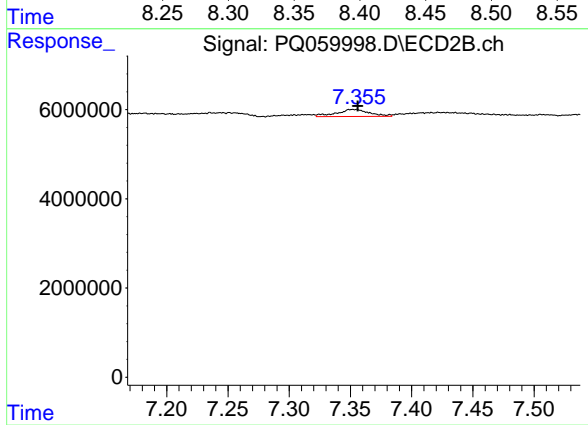
R.T.: 7.084 min
 Delta R.T.: -0.005 min
 Response: 4053080
 Conc: 10.76 ng/ml



#45 AR-1268-5

R.T.: 8.404 min
 Delta R.T.: 0.021 min
 Response: 861694
 Conc: 0.33 ng/ml

Instrument :
 ECD_Q
 ClientSampleId :



#45 AR-1268-5

R.T.: 7.353 min
 Delta R.T.: -0.003 min
 Response: 2988294
 Conc: 1.07 ng/ml