

Data Path : Z:\pestpcbsrv\HPCHEM1\ECD_Q\Data\PQ110822\
 Data File : PQ060008.D
 Signal(s) : Signal #1: ECD1A.ch Signal #2: ECD2B.ch
 Acq On : 08 Nov 2022 22:29
 Operator : YP\AJ
 Sample : N5495-04
 Misc :
 ALS Vial : 25 Sample Multiplier: 1

Instrument :
 ECD_Q
 ClientSampleId :

Integration File signal 1: autoint1.e
 Integration File signal 2: autoint2.e
 Quant Time: Nov 08 23:41:27 2022
 Quant Method : Z:\pestpcbsrv\HPCHEM1\ECD_Q\Method\PQ110122.M
 Quant Title : GC EXTRACTABLES
 QLast Update : Tue Nov 01 17:05:38 2022
 Response via : Initial Calibration
 Integrator: ChemStation

Volume Inj. : 2 µl
 Signal #1 Phase : ZB-MR1 Signal #2 Phase: ZB-MR2
 Signal #1 Info : 30Mx0.32mmx 0.50µ Signal #2 Info : 30M x 0.32mm x 0.25µm

Compound	RT#1	RT#2	Resp#1	Resp#2	ng/ml	ng/ml
System Monitoring Compounds						
1) SA Tetrachlo...	3.458	2.807	277.3E6	319.6E6	22.986	40.287 #
2) SA Decachlor...	8.632f	7.571	140.7E6	214.7E6	19.285	29.513 #
Target Compounds						
3) L1 AR-1016-1	4.559	3.824	11269206	3509164	25.937	13.241 #
4) L1 AR-1016-2	4.559f	3.824	11269206	3509164	17.950	8.906 #
5) L1 AR-1016-3	4.646	0.000	5154578	0	13.314	N.D. #
6) L1 AR-1016-4	4.702f	4.034	10406796	396731	32.319	2.492 #
7) L1 AR-1016-5	5.024	4.229	-3081781	9271751	N.D.	44.999 #
8) L2 AR-1221-1	3.652	3.004	357.3E6	11923319	2451.481	130.108 #
9) L2 AR-1221-2	3.762f	3.078	7491950	17664953	68.180	258.897 #
10) L2 AR-1221-3	3.792	3.154	20107535	6769145	62.091	31.808 #
11) L3 AR-1232-1	3.792	3.154	20107535	6769145	81.695	41.743 #
12) L3 AR-1232-2	4.305	3.824	8485805	3509164	55.889	20.377 #
13) L3 AR-1232-3	4.559f	0.000	11269206	0	41.555	N.D. #
14) L3 AR-1232-4	4.702f	4.058	10406796	952441	73.571	12.946 #
15) L3 AR-1232-5	4.804f	4.229	3285741	9271751	33.141	105.088 #
16) L4 AR-1242-1	4.559	3.824	11269206	3509164	33.502	17.049 #
17) L4 AR-1242-2	4.559f	3.824	11269206	3509164	23.029	11.418 #
18) L4 AR-1242-3	4.646	0.000	5154578	0	17.166	N.D. #
19) L4 AR-1242-4	4.702f	4.058	10406796	952441	41.295	6.495 #
20) L4 AR-1242-5	5.440	4.565	3467340	39219626	13.031	191.251 #
21) L5 AR-1248-1	4.559	3.824	11269206	3509164	44.185	22.123 #
22) L5 AR-1248-2	4.804f	4.034	3285741	396731	10.053	1.840 #
24) L5 AR-1248-4	5.391	4.229	25362238	9271751	57.287	34.843 #
25) L5 AR-1248-5	5.440	4.589f	3467340	24339899	7.946	92.788 #
26) L6 AR-1254-1	5.375	4.565	22795492	39219626	50.430	96.412 #
27) L6 AR-1254-2	5.588	4.715	17382923	9881154	25.031	27.471
28) L6 AR-1254-3	5.961f	5.092	39887729	22970972	54.706	40.028 #
29) L6 AR-1254-4	6.232	5.293f	837225	21417243	1.557	58.731 #
30) L6 AR-1254-5	0.000	5.726	0	77741347	N.D.	145.093 #
31) L7 AR-1260-1	6.110	5.223	8131378	14087365	14.533	35.567 #
32) L7 AR-1260-2	6.359	5.425	81643080	23502180	121.932	48.780 #
33) L7 AR-1260-3	6.726	5.549	6454868	8512458	15.160	18.358
34) L7 AR-1260-4	6.941	6.008	2457999	17577504	4.912	51.393 #
35) L7 AR-1260-5	7.252	6.257	8528797	12136287	8.724	14.601 #
36) L8 AR-1262-1	6.726	5.768	6454868	10582916	9.725	20.688 #
37) L8 AR-1262-2	7.252	6.257	8528797	12136287	7.667	12.802 #
38) L8 AR-1262-3	7.531	6.535	4409286	9358347	6.138	25.284 #
39) L8 AR-1262-4	7.604	6.592	4516767	9115140	8.131	12.870 #
40) L8 AR-1262-5	8.103	7.087	2840596	4636705	8.198	13.924 #
41) L9 AR-1268-1	7.531f	6.535	4409286	9358347	3.515	8.458 #
42) L9 AR-1268-2	7.604	6.592	4516767	9115140	3.931	8.914 #

Data Path : Z:\pestpcbsrv\HPCHEM1\ECD_Q\Data\PQ110822\
 Data File : PQ060008.D
 Signal(s) : Signal #1: ECD1A.ch Signal #2: ECD2B.ch
 Acq On : 08 Nov 2022 22:29
 Operator : YP\AJ
 Sample : N5495-04
 Misc :
 ALS Vial : 25 Sample Multiplier: 1

Instrument :
 ECD_Q
 ClientSampleId :

Integration File signal 1: autoint1.e
 Integration File signal 2: autoint2.e
 Quant Time: Nov 08 23:41:27 2022
 Quant Method : Z:\pestpcbsrv\HPCHEM1\ECD_Q\Method\PQ110122.M
 Quant Title : GC EXTRACTABLES
 QLast Update : Tue Nov 01 17:05:38 2022
 Response via : Initial Calibration
 Integrator: ChemStation

Volume Inj. : 2 µl
 Signal #1 Phase : ZB-MR1 Signal #2 Phase: ZB-MR2
 Signal #1 Info : 30Mx0.32mmx 0.50µ Signal #2 Info : 30M x 0.32mm x 0.25µm

	Compound	RT#1	RT#2	Resp#1	Resp#2	ng/ml	ng/ml
43)	L9 AR-1268-3	7.751f	6.800	5695798	2766215	6.152	3.169 #
44)	L9 AR-1268-4	8.103	7.087	2840596	4636705	7.306	12.308 #
45)	L9 AR-1268-5	8.399f	7.354	2839102	4578915	1.077	1.643 #

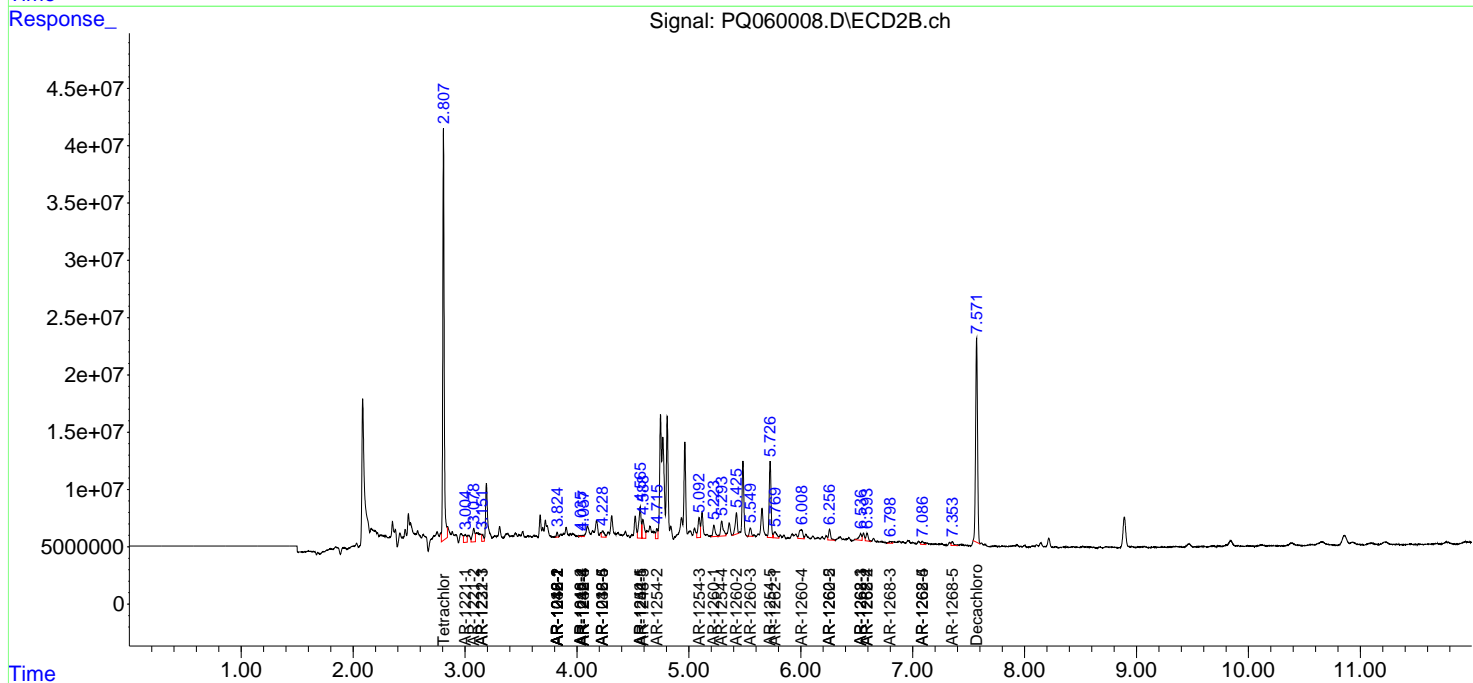
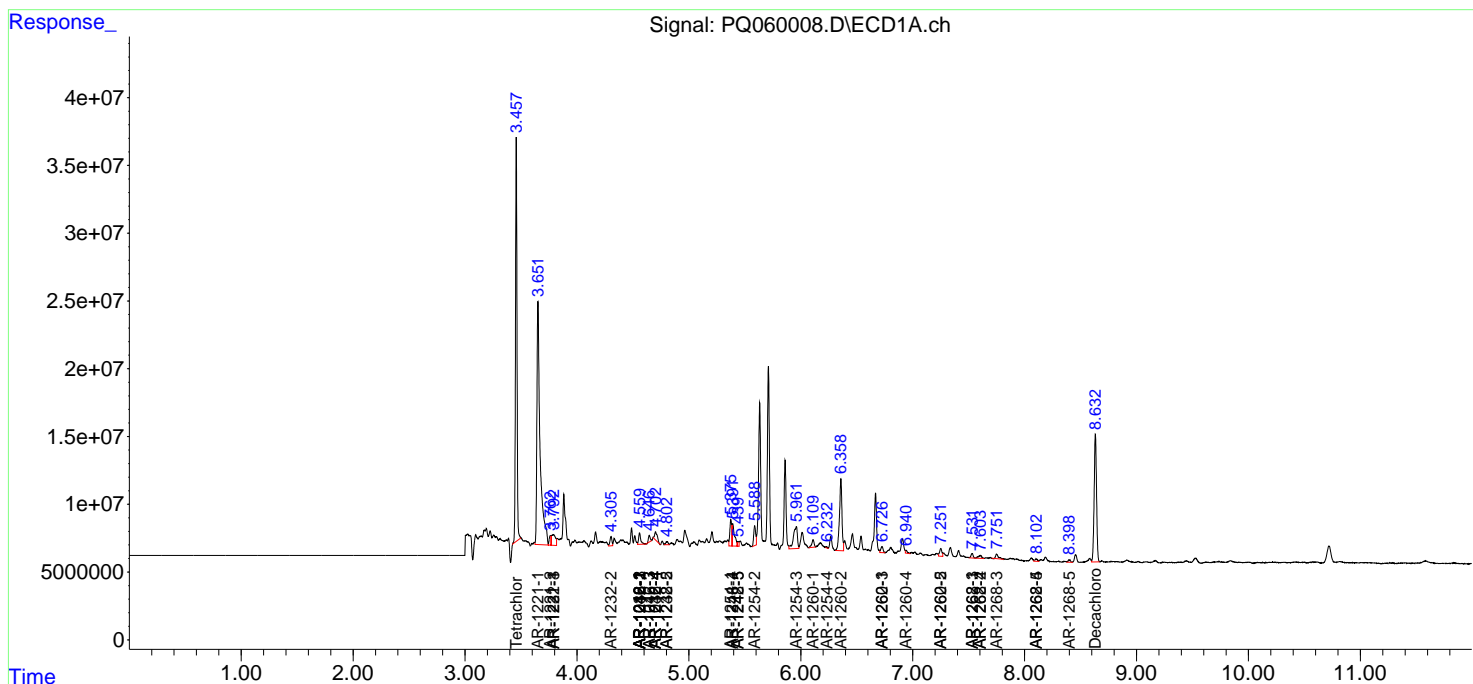
(f)=RT Delta > 1/2 Window (#)=Amounts differ by > 25% (m)=manual int.

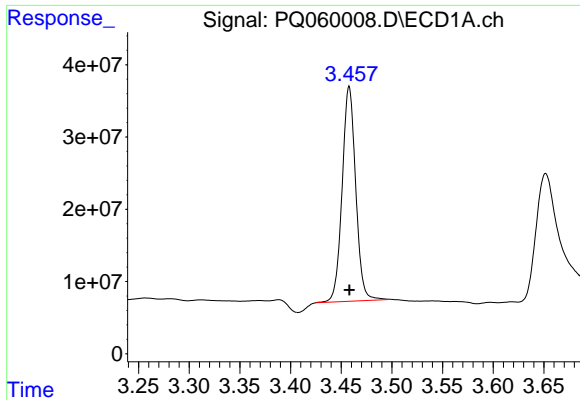
Data Path : Z:\pestpcbsrv\HPCHEM1\ECD_Q\Data\PQ110822\
 Data File : PQ060008.D
 Signal(s) : Signal #1: ECD1A.ch Signal #2: ECD2B.ch
 Acq On : 08 Nov 2022 22:29
 Operator : YP\AJ
 Sample : N5495-04
 Misc :
 ALS Vial : 25 Sample Multiplier: 1

Instrument :
 ECD_Q
 ClientSampleId :

Integration File signal 1: autoint1.e
 Integration File signal 2: autoint2.e
 Quant Time: Nov 08 23:41:27 2022
 Quant Method : Z:\pestpcbsrv\HPCHEM1\ECD_Q\Method\PQ110122.M
 Quant Title : GC EXTRACTABLES
 QLast Update : Tue Nov 01 17:05:38 2022
 Response via : Initial Calibration
 Integrator: ChemStation

Volume Inj. : 2 µl
 Signal #1 Phase : ZB-MR1 Signal #2 Phase: ZB-MR2
 Signal #1 Info : 30Mx0.32mmx 0.50µ Signal #2 Info : 30M x 0.32mm x 0.25µm

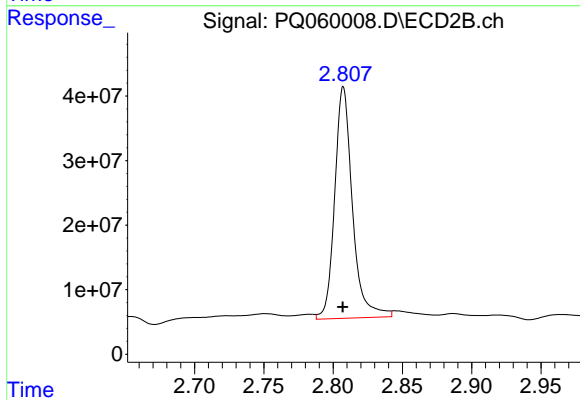




#1 Tetrachloro-m-xylene

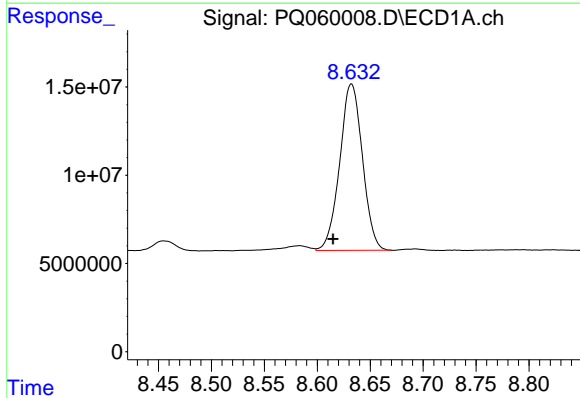
R.T.: 3.458 min
 Delta R.T.: 0.000 min
 Response: 277343597
 Conc: 22.99 ng/ml

Instrument :
 ECD_Q
 ClientSampleId :



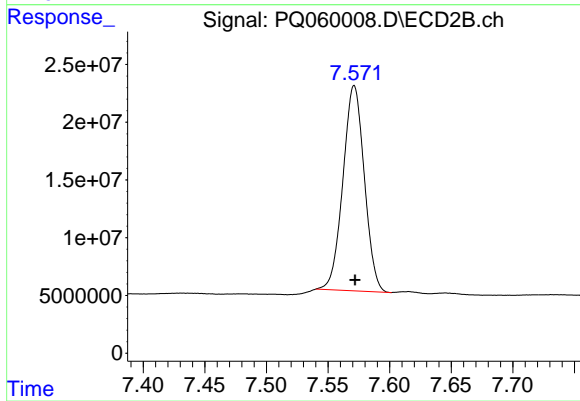
#1 Tetrachloro-m-xylene

R.T.: 2.807 min
 Delta R.T.: 0.000 min
 Response: 319638832
 Conc: 40.29 ng/ml



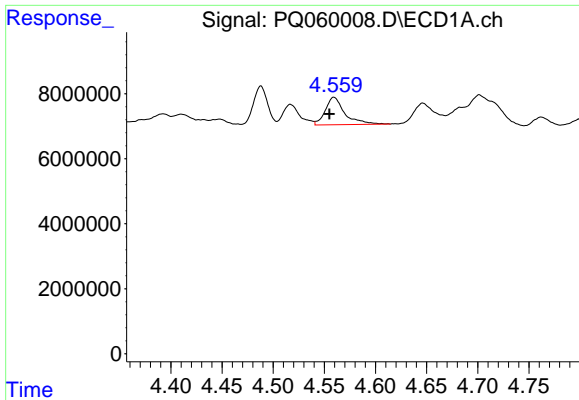
#2 Decachlorobiphenyl

R.T.: 8.632 min
 Delta R.T.: 0.017 min
 Response: 140716509
 Conc: 19.29 ng/ml



#2 Decachlorobiphenyl

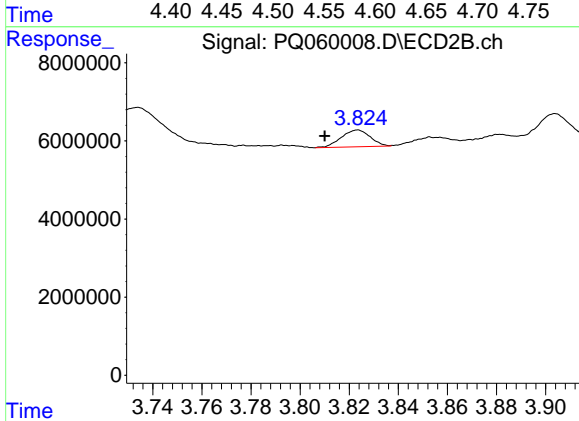
R.T.: 7.571 min
 Delta R.T.: 0.000 min
 Response: 214682983
 Conc: 29.51 ng/ml



#3 AR-1016-1

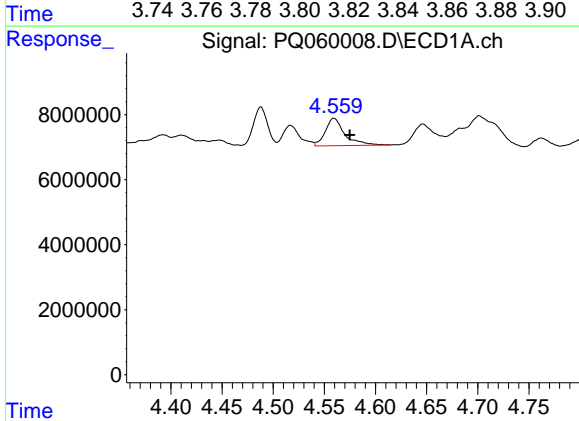
R.T.: 4.559 min
 Delta R.T.: 0.004 min
 Response: 11269206
 Conc: 25.94 ng/ml

Instrument :
 ECD_Q
 ClientSampleId :



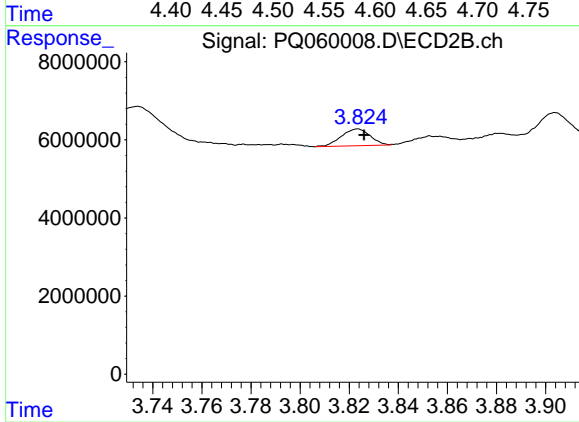
#3 AR-1016-1

R.T.: 3.824 min
 Delta R.T.: 0.014 min
 Response: 3509164
 Conc: 13.24 ng/ml



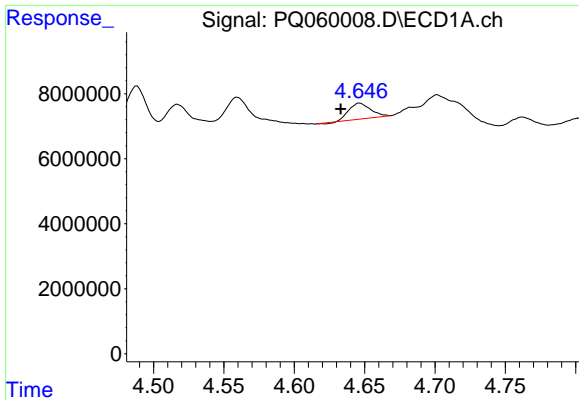
#4 AR-1016-2

R.T.: 4.559 min
 Delta R.T.: -0.016 min
 Response: 11269206
 Conc: 17.95 ng/ml



#4 AR-1016-2

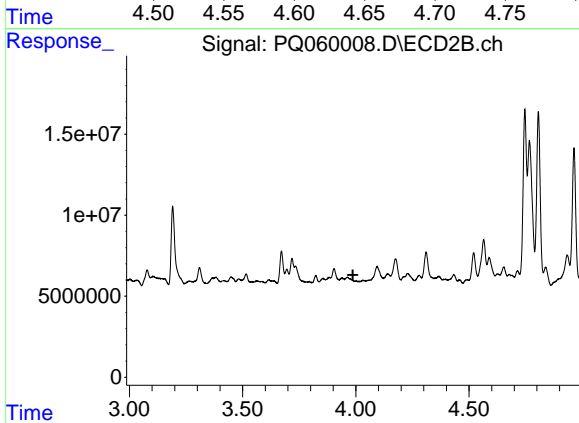
R.T.: 3.824 min
 Delta R.T.: -0.002 min
 Response: 3509164
 Conc: 8.91 ng/ml



#5 AR-1016-3

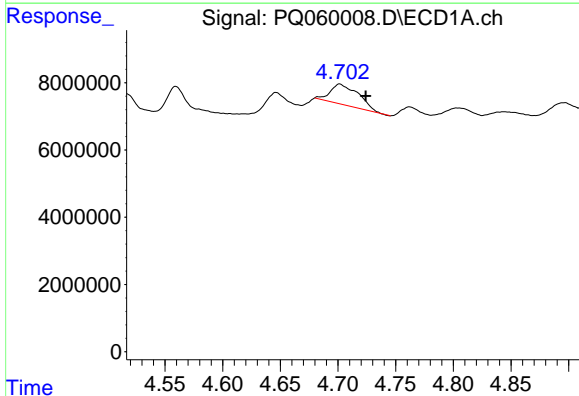
R.T.: 4.646 min
 Delta R.T.: 0.013 min
 Response: 5154578
 Conc: 13.31 ng/ml

Instrument :
 ECD_Q
 ClientSampleId :



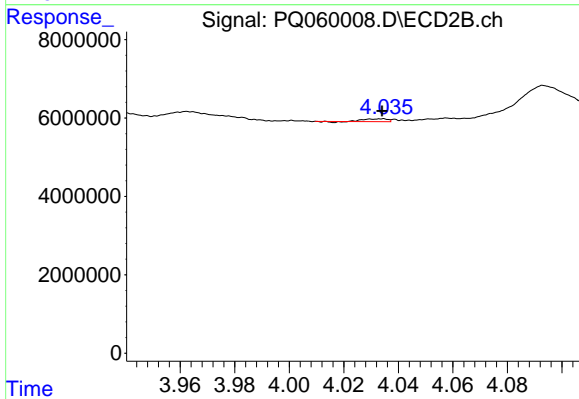
#5 AR-1016-3

R.T.: 0.000 min
 Exp R.T. : 3.987 min
 Response: 0
 Conc: N.D.



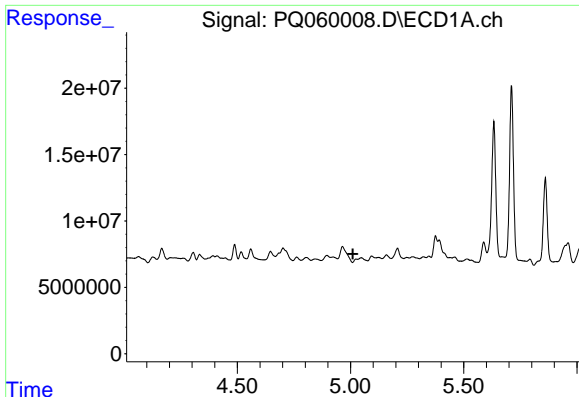
#6 AR-1016-4

R.T.: 4.702 min
 Delta R.T.: -0.022 min
 Response: 10406796
 Conc: 32.32 ng/ml



#6 AR-1016-4

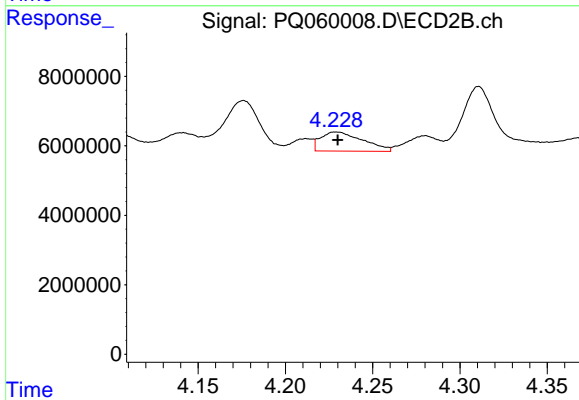
R.T.: 4.034 min
 Delta R.T.: 0.000 min
 Response: 396731
 Conc: 2.49 ng/ml



#7 AR-1016-5

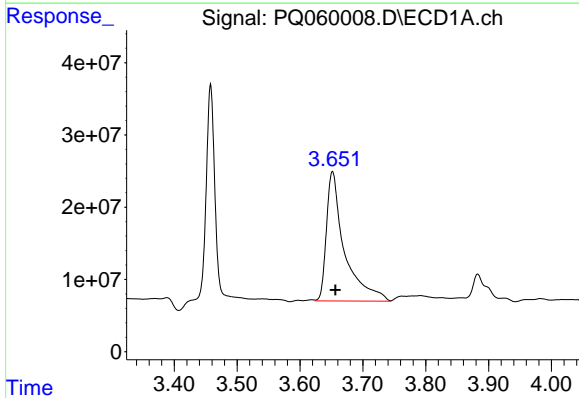
R.T.: 5.024 min
 Delta R.T.: 0.014 min
 Response: -3081781
 Conc: N.D.

Instrument :
 ECD_Q
 ClientSampleId :



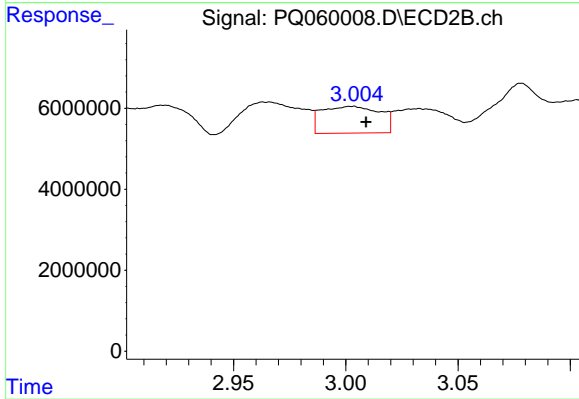
#7 AR-1016-5

R.T.: 4.229 min
 Delta R.T.: -0.001 min
 Response: 9271751
 Conc: 45.00 ng/ml



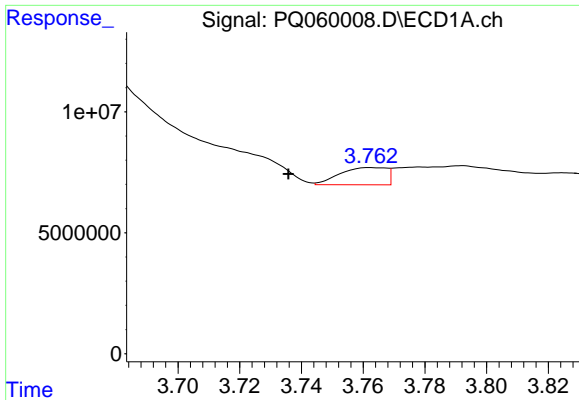
#8 AR-1221-1

R.T.: 3.652 min
 Delta R.T.: -0.005 min
 Response: 357279421
 Conc: 2451.48 ng/ml



#8 AR-1221-1

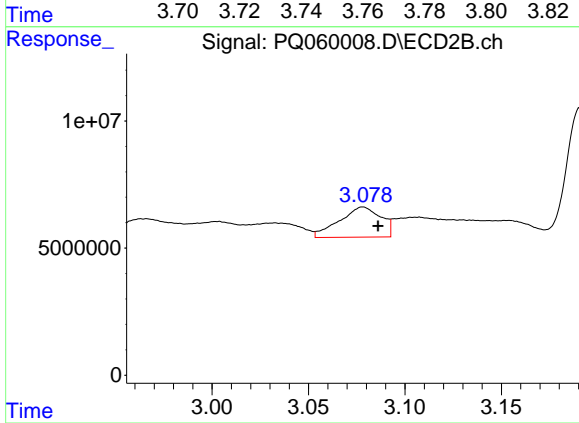
R.T.: 3.004 min
 Delta R.T.: -0.005 min
 Response: 11923319
 Conc: 130.11 ng/ml



#9 AR-1221-2

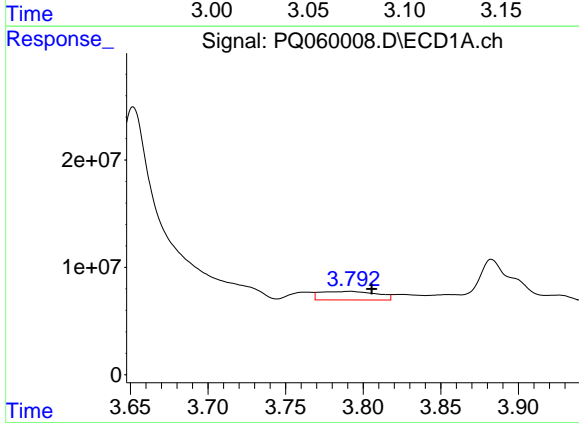
R.T.: 3.762 min
 Delta R.T.: 0.027 min
 Response: 7491950
 Conc: 68.18 ng/ml

Instrument :
 ECD_Q
 ClientSampleId :



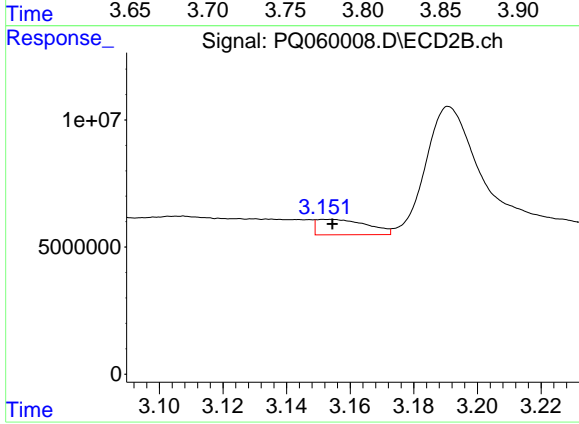
#9 AR-1221-2

R.T.: 3.078 min
 Delta R.T.: -0.008 min
 Response: 17664953
 Conc: 258.90 ng/ml



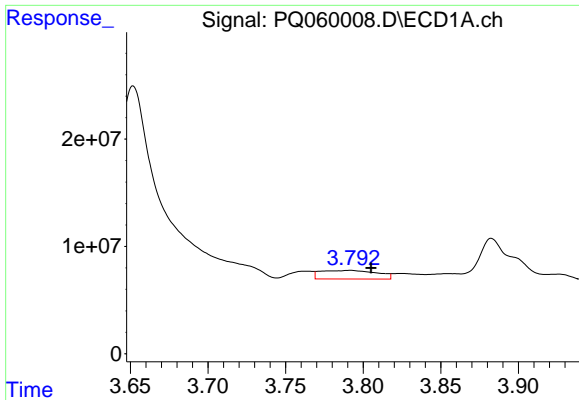
#10 AR-1221-3

R.T.: 3.792 min
 Delta R.T.: -0.014 min
 Response: 20107535
 Conc: 62.09 ng/ml



#10 AR-1221-3

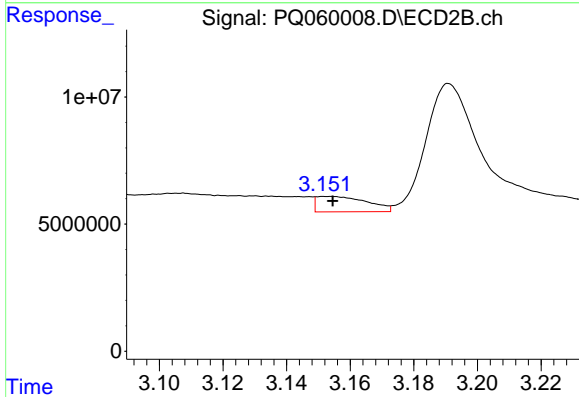
R.T.: 3.154 min
 Delta R.T.: 0.000 min
 Response: 6769145
 Conc: 31.81 ng/ml



#11 AR-1232-1

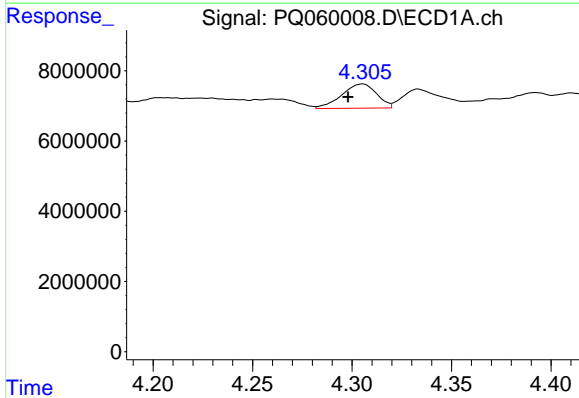
R.T.: 3.792 min
 Delta R.T.: -0.013 min
 Response: 20107535
 Conc: 81.69 ng/ml

Instrument :
 ECD_Q
 ClientSampleId :



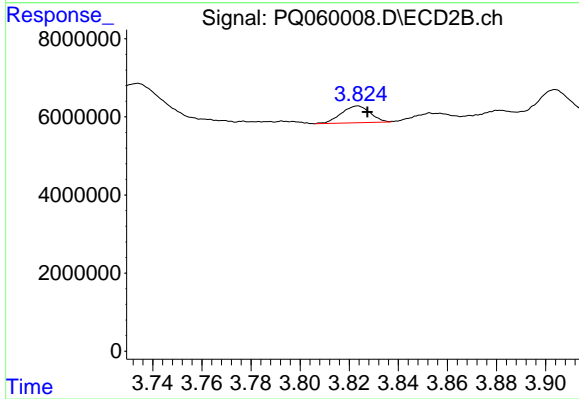
#11 AR-1232-1

R.T.: 3.154 min
 Delta R.T.: 0.000 min
 Response: 6769145
 Conc: 41.74 ng/ml



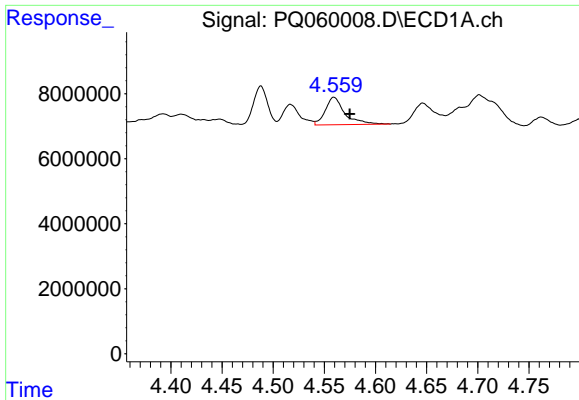
#12 AR-1232-2

R.T.: 4.305 min
 Delta R.T.: 0.007 min
 Response: 8485805
 Conc: 55.89 ng/ml



#12 AR-1232-2

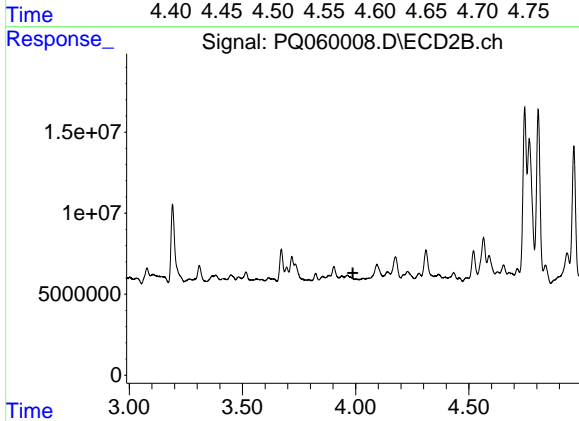
R.T.: 3.824 min
 Delta R.T.: -0.004 min
 Response: 3509164
 Conc: 20.38 ng/ml



#13 AR-1232-3

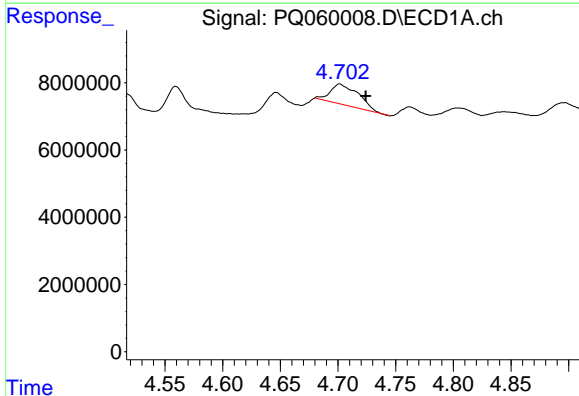
R.T.: 4.559 min
 Delta R.T.: -0.015 min
 Response: 11269206
 Conc: 41.56 ng/ml

Instrument :
 ECD_Q
 ClientSampleId :



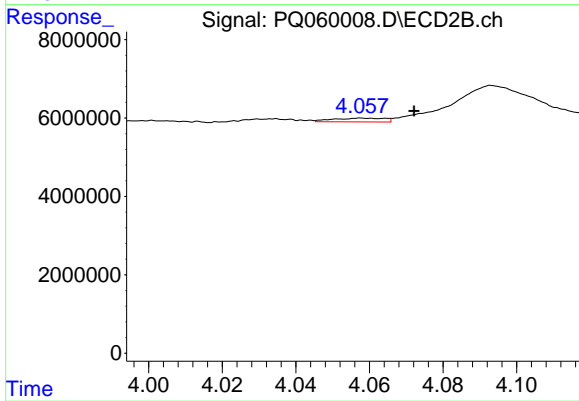
#13 AR-1232-3

R.T.: 0.000 min
 Exp R.T. : 3.988 min
 Response: 0
 Conc: N.D.



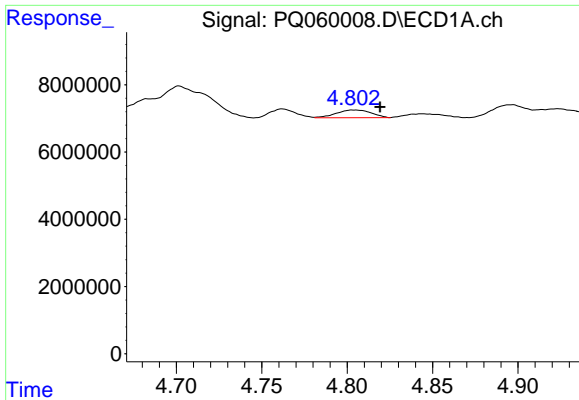
#14 AR-1232-4

R.T.: 4.702 min
 Delta R.T.: -0.023 min
 Response: 10406796
 Conc: 73.57 ng/ml



#14 AR-1232-4

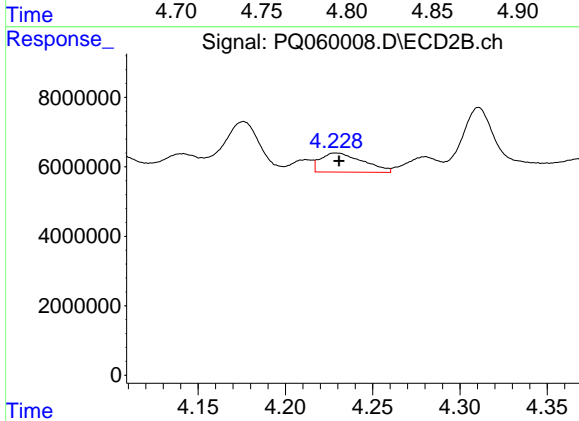
R.T.: 4.058 min
 Delta R.T.: -0.014 min
 Response: 952441
 Conc: 12.95 ng/ml



#15 AR-1232-5

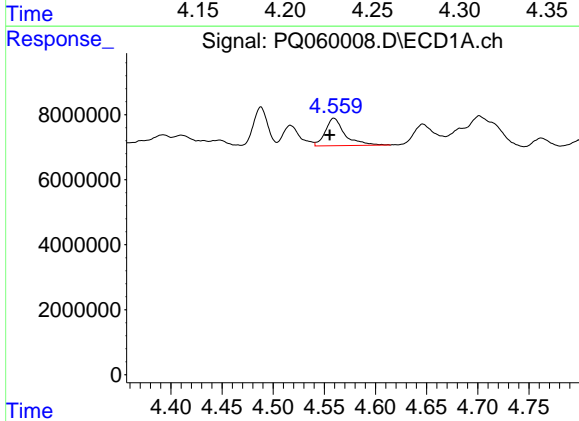
R.T.: 4.804 min
 Delta R.T.: -0.015 min
 Response: 3285741
 Conc: 33.14 ng/ml

Instrument :
 ECD_Q
 ClientSampleId :



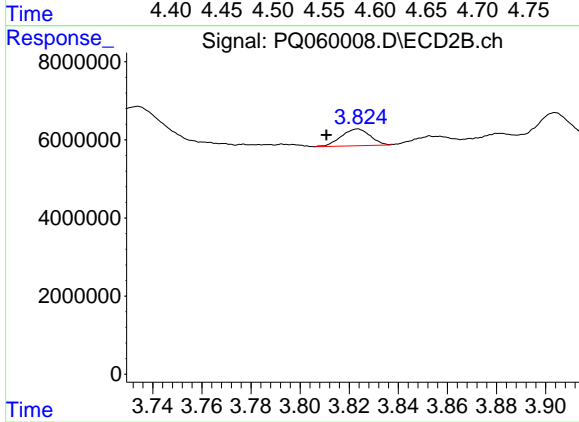
#15 AR-1232-5

R.T.: 4.229 min
 Delta R.T.: -0.002 min
 Response: 9271751
 Conc: 105.09 ng/ml



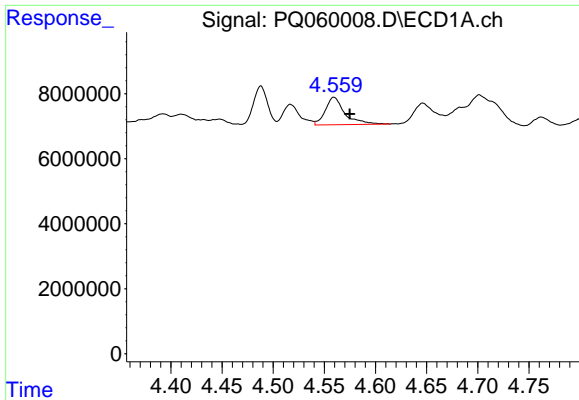
#16 AR-1242-1

R.T.: 4.559 min
 Delta R.T.: 0.004 min
 Response: 11269206
 Conc: 33.50 ng/ml



#16 AR-1242-1

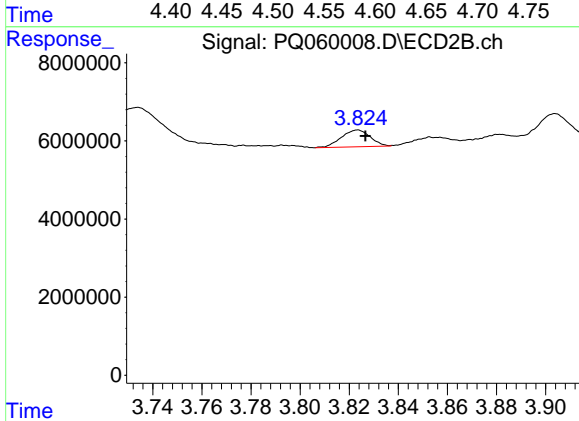
R.T.: 3.824 min
 Delta R.T.: 0.013 min
 Response: 3509164
 Conc: 17.05 ng/ml



#17 AR-1242-2

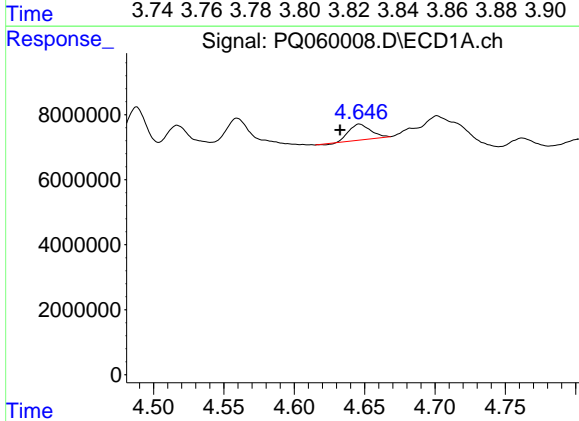
R.T.: 4.559 min
 Delta R.T.: -0.015 min
 Response: 11269206
 Conc: 23.03 ng/ml

Instrument :
 ECD_Q
 ClientSampleId :



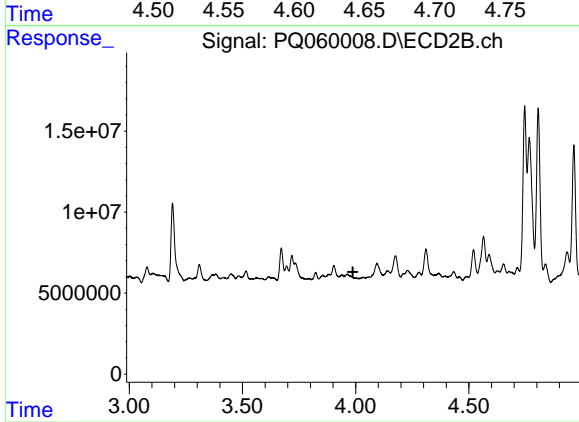
#17 AR-1242-2

R.T.: 3.824 min
 Delta R.T.: -0.003 min
 Response: 3509164
 Conc: 11.42 ng/ml



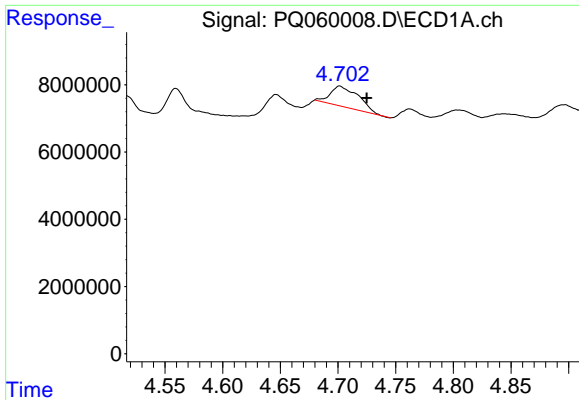
#18 AR-1242-3

R.T.: 4.646 min
 Delta R.T.: 0.014 min
 Response: 5154578
 Conc: 17.17 ng/ml



#18 AR-1242-3

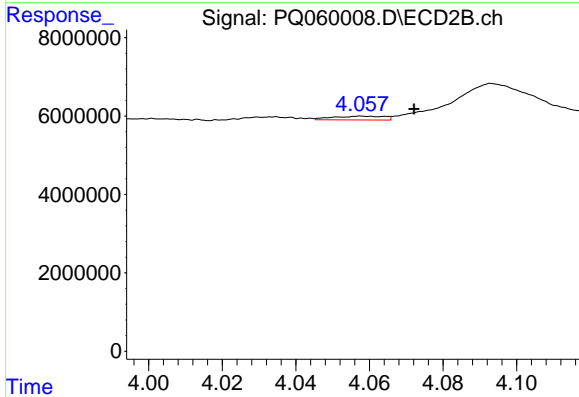
R.T.: 0.000 min
 Exp R.T. : 3.988 min
 Response: 0
 Conc: N.D.



#19 AR-1242-4

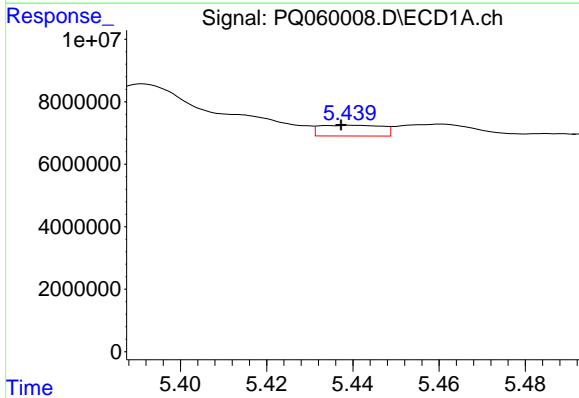
R.T.: 4.702 min
 Delta R.T.: -0.023 min
 Response: 10406796
 Conc: 41.29 ng/ml

Instrument :
 ECD_Q
 ClientSampleId :



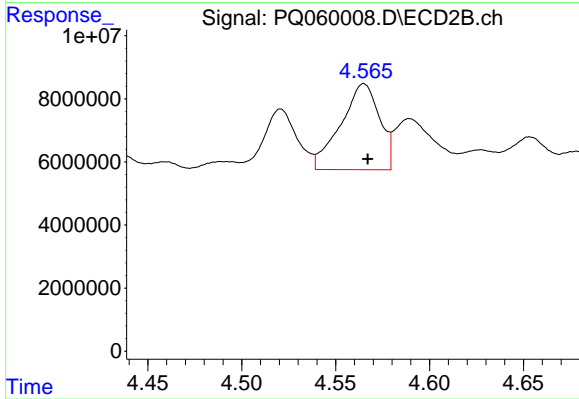
#19 AR-1242-4

R.T.: 4.058 min
 Delta R.T.: -0.014 min
 Response: 952441
 Conc: 6.49 ng/ml



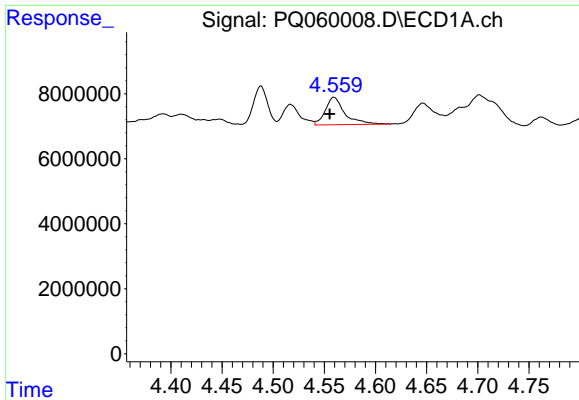
#20 AR-1242-5

R.T.: 5.440 min
 Delta R.T.: 0.002 min
 Response: 3467340
 Conc: 13.03 ng/ml



#20 AR-1242-5

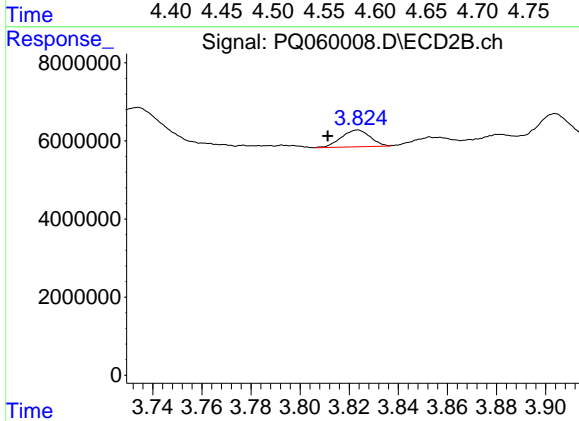
R.T.: 4.565 min
 Delta R.T.: -0.002 min
 Response: 39219626
 Conc: 191.25 ng/ml



#21 AR-1248-1

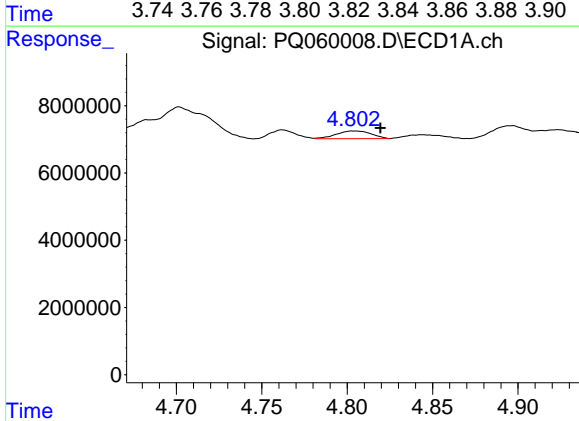
R.T.: 4.559 min
 Delta R.T.: 0.004 min
 Response: 11269206
 Conc: 44.18 ng/ml

Instrument :
 ECD_Q
 ClientSampleId :



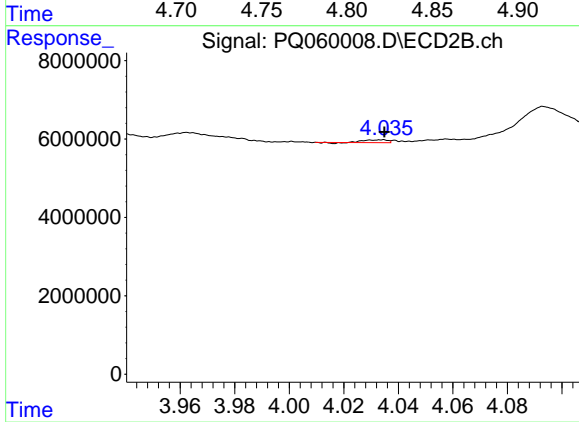
#21 AR-1248-1

R.T.: 3.824 min
 Delta R.T.: 0.012 min
 Response: 3509164
 Conc: 22.12 ng/ml



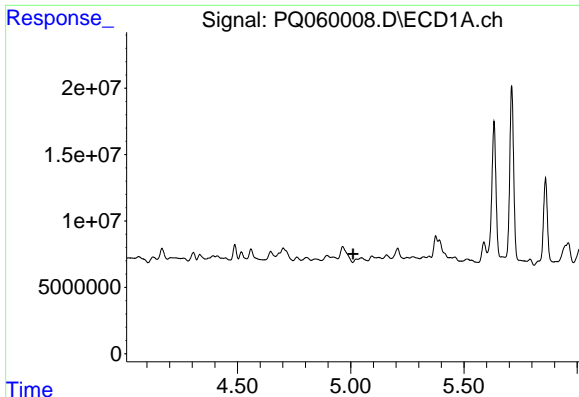
#22 AR-1248-2

R.T.: 4.804 min
 Delta R.T.: -0.015 min
 Response: 3285741
 Conc: 10.05 ng/ml



#22 AR-1248-2

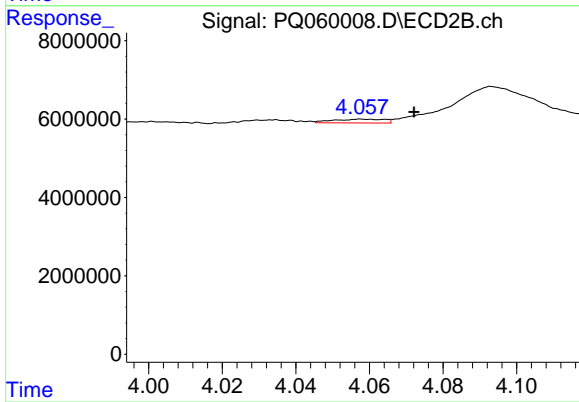
R.T.: 4.034 min
 Delta R.T.: 0.000 min
 Response: 396731
 Conc: 1.84 ng/ml



#23 AR-1248-3

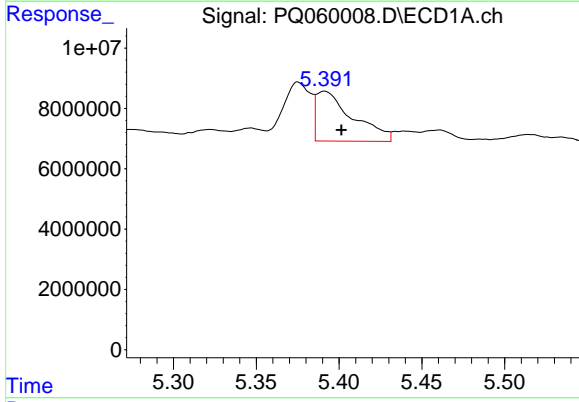
R.T.: 5.024 min
 Delta R.T.: 0.014 min
 Response: -3081781
 Conc: N.D.

Instrument :
 ECD_Q
 ClientSampleId :



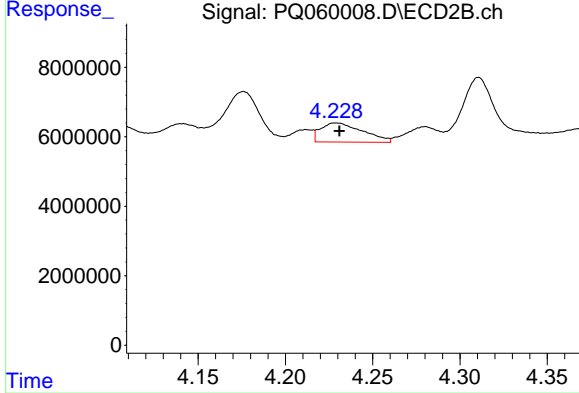
#23 AR-1248-3

R.T.: 4.058 min
 Delta R.T.: -0.014 min
 Response: 952441
 Conc: 4.53 ng/ml



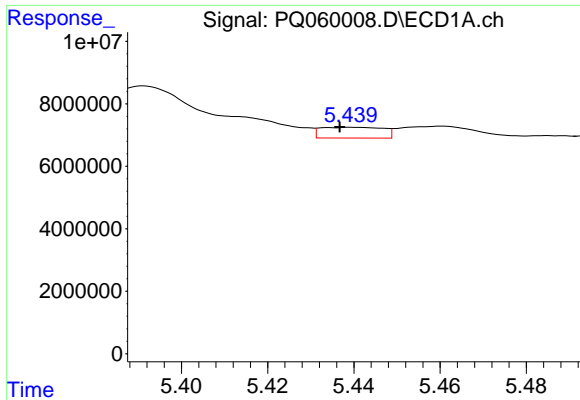
#24 AR-1248-4

R.T.: 5.391 min
 Delta R.T.: -0.010 min
 Response: 25362238
 Conc: 57.29 ng/ml



#24 AR-1248-4

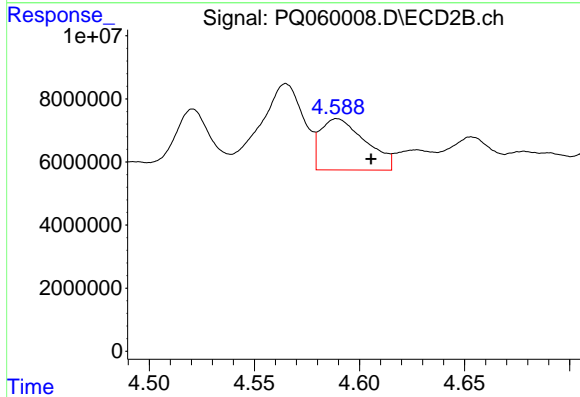
R.T.: 4.229 min
 Delta R.T.: -0.002 min
 Response: 9271751
 Conc: 34.84 ng/ml



#25 AR-1248-5

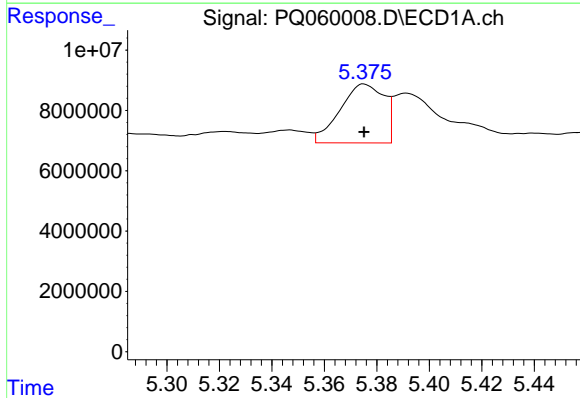
R.T.: 5.440 min
 Delta R.T.: 0.003 min
 Response: 3467340
 Conc: 7.95 ng/ml

Instrument :
 ECD_Q
 ClientSampleId :



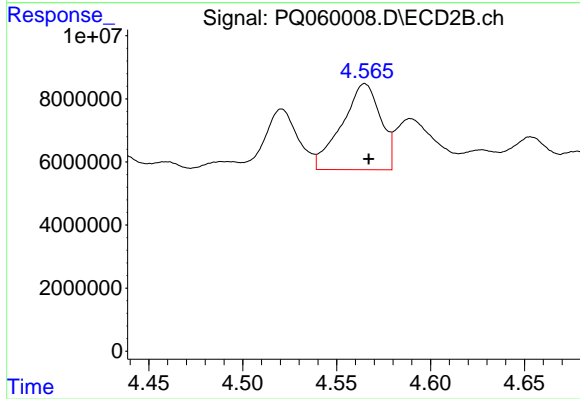
#25 AR-1248-5

R.T.: 4.589 min
 Delta R.T.: -0.016 min
 Response: 24339899
 Conc: 92.79 ng/ml



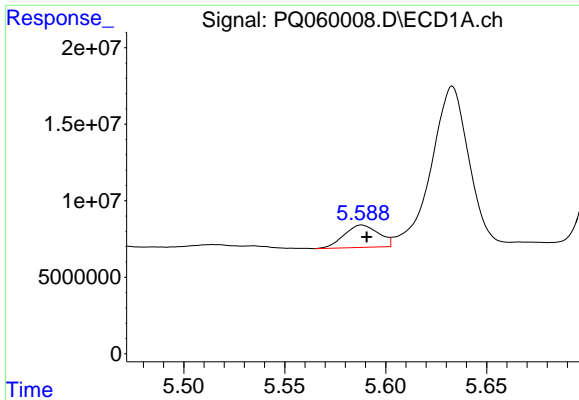
#26 AR-1254-1

R.T.: 5.375 min
 Delta R.T.: 0.000 min
 Response: 22795492
 Conc: 50.43 ng/ml



#26 AR-1254-1

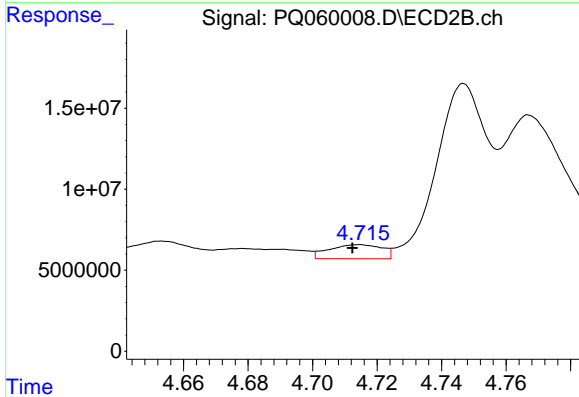
R.T.: 4.565 min
 Delta R.T.: -0.002 min
 Response: 39219626
 Conc: 96.41 ng/ml



#27 AR-1254-2

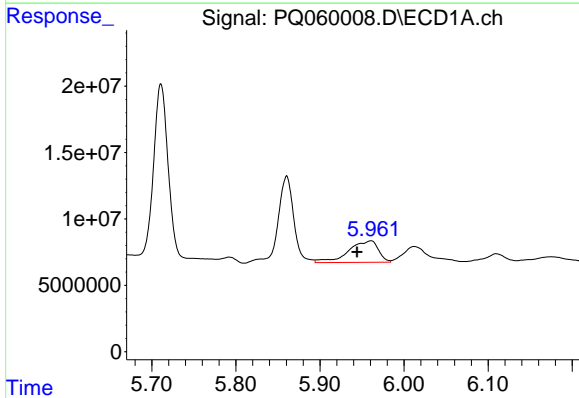
R.T.: 5.588 min
 Delta R.T.: -0.002 min
 Response: 17382923
 Conc: 25.03 ng/ml

Instrument :
 ECD_Q
 ClientSampleId :



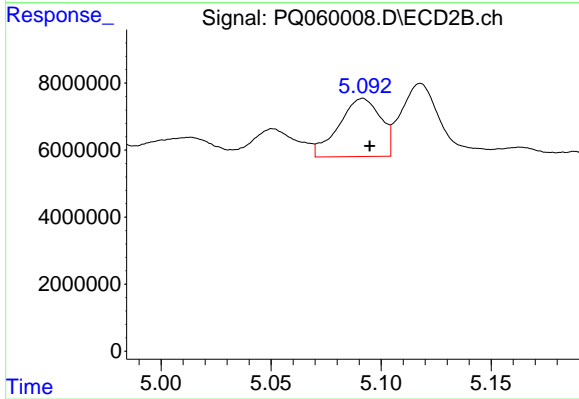
#27 AR-1254-2

R.T.: 4.715 min
 Delta R.T.: 0.003 min
 Response: 9881154
 Conc: 27.47 ng/ml



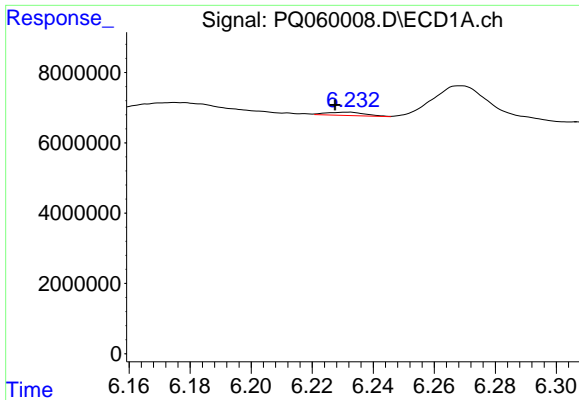
#28 AR-1254-3

R.T.: 5.961 min
 Delta R.T.: 0.017 min
 Response: 39887729
 Conc: 54.71 ng/ml



#28 AR-1254-3

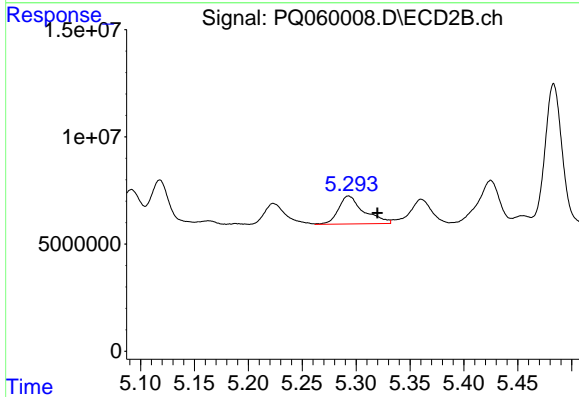
R.T.: 5.092 min
 Delta R.T.: -0.003 min
 Response: 22970972
 Conc: 40.03 ng/ml



#29 AR-1254-4

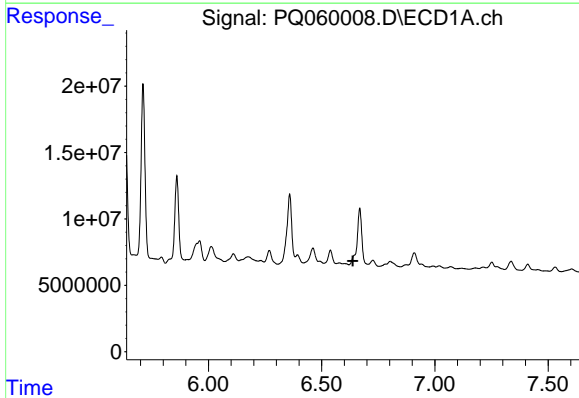
R.T.: 6.232 min
 Delta R.T.: 0.004 min
 Response: 837225
 Conc: 1.56 ng/ml

Instrument :
 ECD_Q
 ClientSampleId :



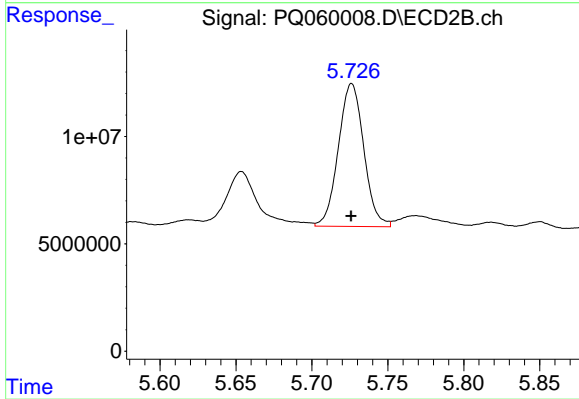
#29 AR-1254-4

R.T.: 5.293 min
 Delta R.T.: -0.027 min
 Response: 21417243
 Conc: 58.73 ng/ml



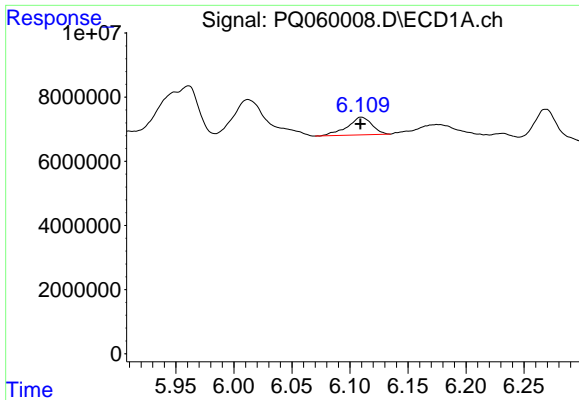
#30 AR-1254-5

R.T.: 0.000 min
 Exp R.T. : 6.638 min
 Response: 0
 Conc: N.D.



#30 AR-1254-5

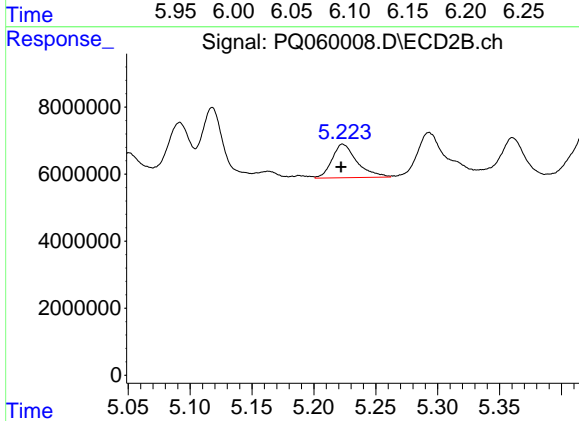
R.T.: 5.726 min
 Delta R.T.: 0.000 min
 Response: 77741347
 Conc: 145.09 ng/ml



#31 AR-1260-1

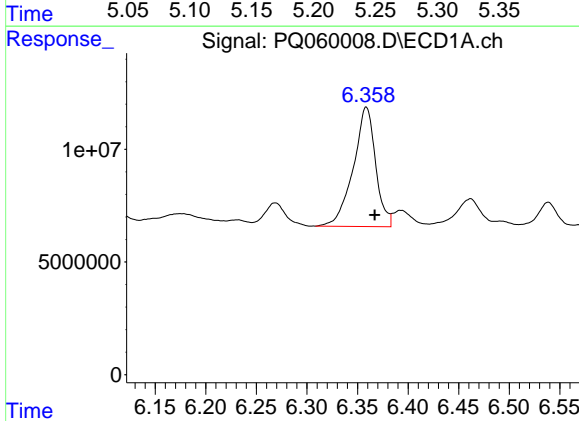
R.T.: 6.110 min
 Delta R.T.: 0.000 min
 Response: 8131378
 Conc: 14.53 ng/ml

Instrument :
 ECD_Q
 ClientSampleId :



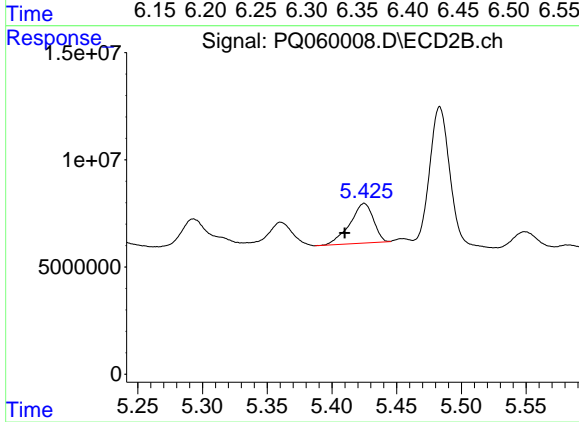
#31 AR-1260-1

R.T.: 5.223 min
 Delta R.T.: 0.001 min
 Response: 14087365
 Conc: 35.57 ng/ml



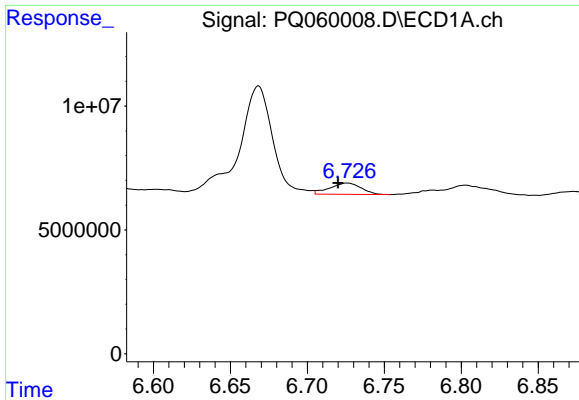
#32 AR-1260-2

R.T.: 6.359 min
 Delta R.T.: -0.008 min
 Response: 81643080
 Conc: 121.93 ng/ml



#32 AR-1260-2

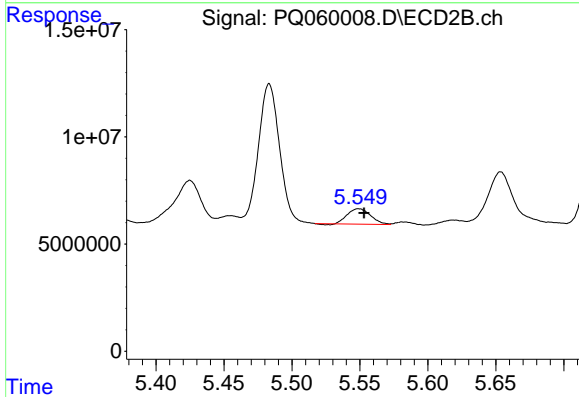
R.T.: 5.425 min
 Delta R.T.: 0.015 min
 Response: 23502180
 Conc: 48.78 ng/ml



#33 AR-1260-3

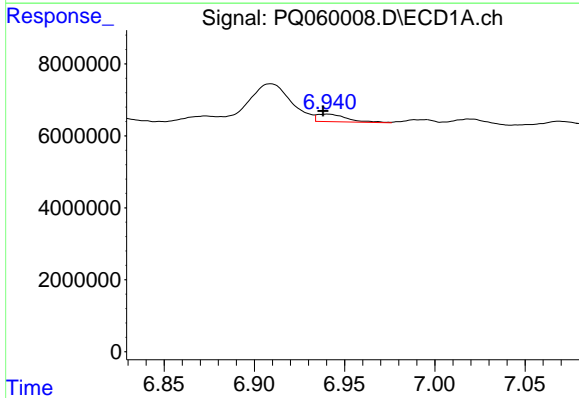
R.T.: 6.726 min
 Delta R.T.: 0.006 min
 Response: 6454868
 Conc: 15.16 ng/ml

Instrument :
 ECD_Q
 ClientSampleId :



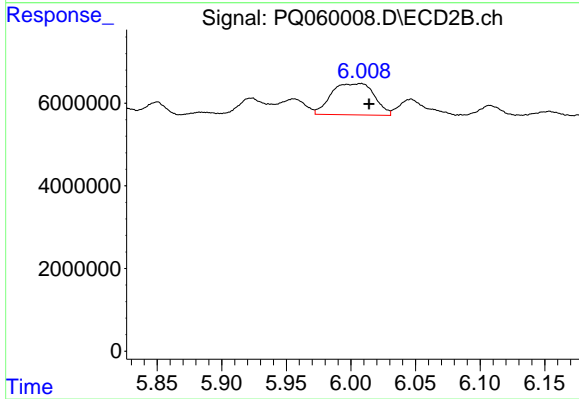
#33 AR-1260-3

R.T.: 5.549 min
 Delta R.T.: -0.004 min
 Response: 8512458
 Conc: 18.36 ng/ml



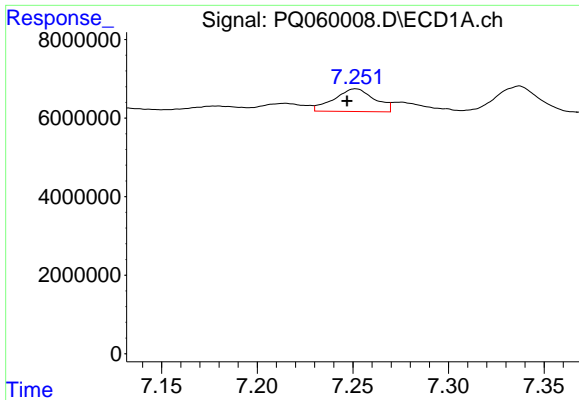
#34 AR-1260-4

R.T.: 6.941 min
 Delta R.T.: 0.003 min
 Response: 2457999
 Conc: 4.91 ng/ml



#34 AR-1260-4

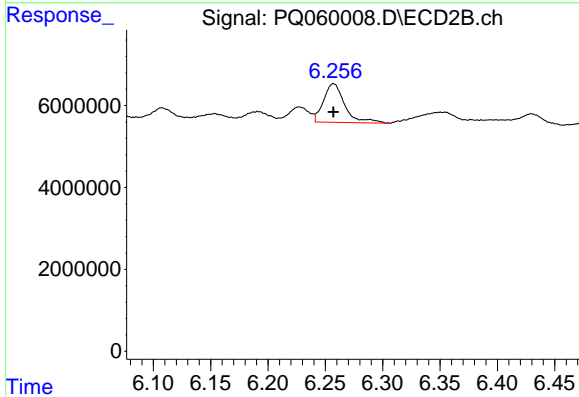
R.T.: 6.008 min
 Delta R.T.: -0.006 min
 Response: 17577504
 Conc: 51.39 ng/ml



#35 AR-1260-5

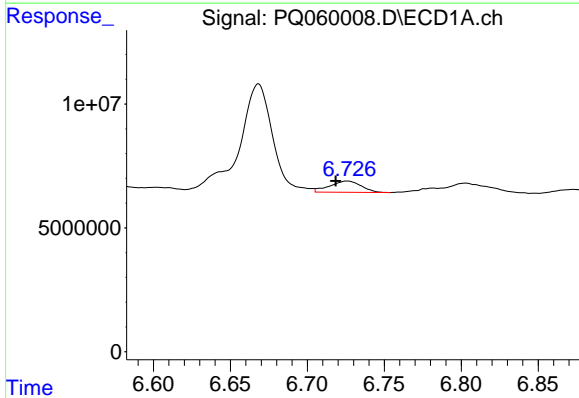
R.T.: 7.252 min
 Delta R.T.: 0.005 min
 Response: 8528797
 Conc: 8.72 ng/ml

Instrument :
 ECD_Q
 ClientSampleId :



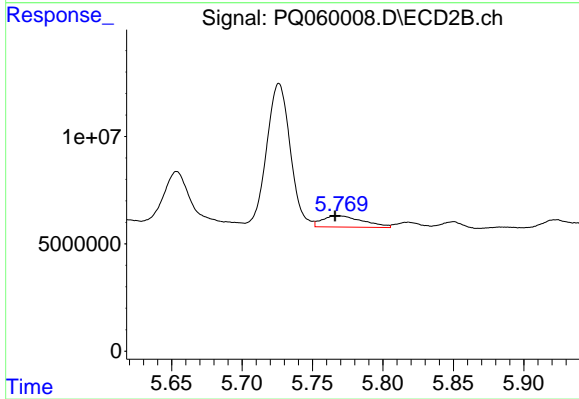
#35 AR-1260-5

R.T.: 6.257 min
 Delta R.T.: 0.000 min
 Response: 12136287
 Conc: 14.60 ng/ml



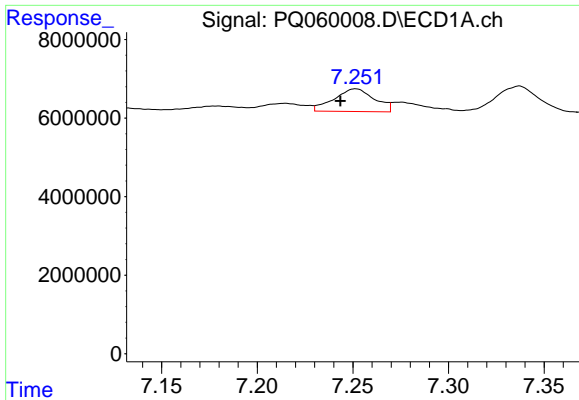
#36 AR-1262-1

R.T.: 6.726 min
 Delta R.T.: 0.008 min
 Response: 6454868
 Conc: 9.73 ng/ml



#36 AR-1262-1

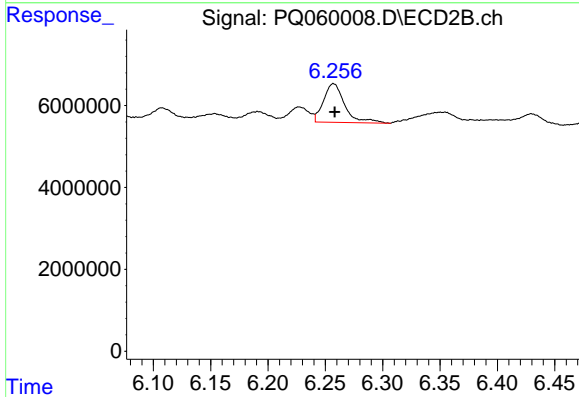
R.T.: 5.768 min
 Delta R.T.: 0.002 min
 Response: 10582916
 Conc: 20.69 ng/ml



#37 AR-1262-2

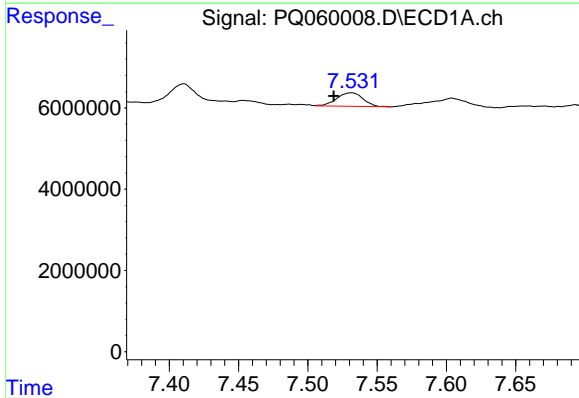
R.T.: 7.252 min
 Delta R.T.: 0.008 min
 Response: 8528797
 Conc: 7.67 ng/ml

Instrument :
 ECD_Q
 ClientSampleId :



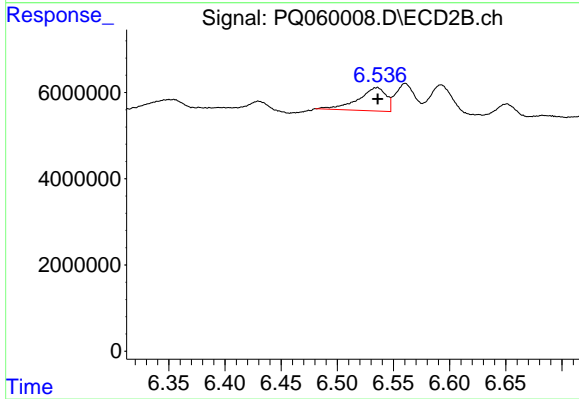
#37 AR-1262-2

R.T.: 6.257 min
 Delta R.T.: 0.000 min
 Response: 12136287
 Conc: 12.80 ng/ml



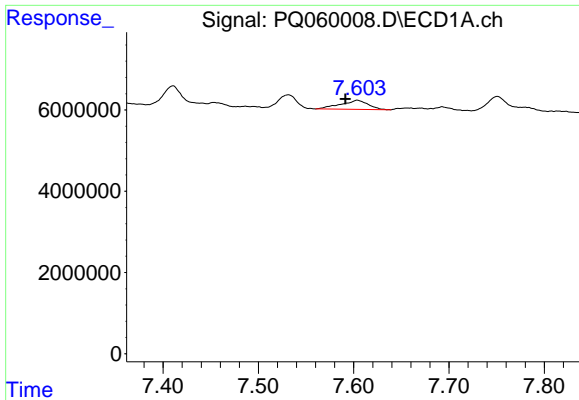
#38 AR-1262-3

R.T.: 7.531 min
 Delta R.T.: 0.013 min
 Response: 4409286
 Conc: 6.14 ng/ml



#38 AR-1262-3

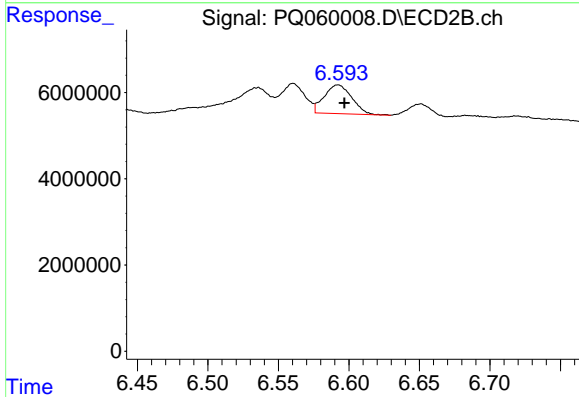
R.T.: 6.535 min
 Delta R.T.: 0.000 min
 Response: 9358347
 Conc: 25.28 ng/ml



#39 AR-1262-4

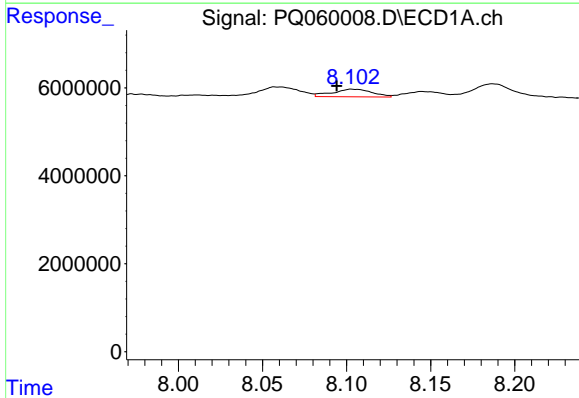
R.T.: 7.604 min
 Delta R.T.: 0.013 min
 Response: 4516767
 Conc: 8.13 ng/ml

Instrument :
 ECD_Q
 ClientSampleId :



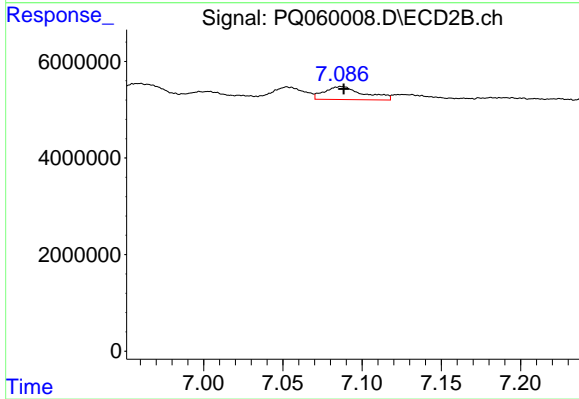
#39 AR-1262-4

R.T.: 6.592 min
 Delta R.T.: -0.004 min
 Response: 9115140
 Conc: 12.87 ng/ml



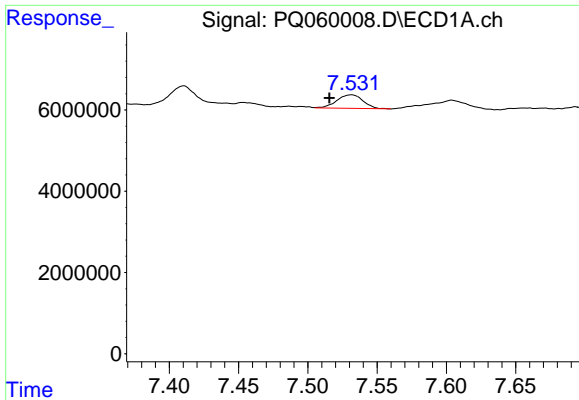
#40 AR-1262-5

R.T.: 8.103 min
 Delta R.T.: 0.009 min
 Response: 2840596
 Conc: 8.20 ng/ml



#40 AR-1262-5

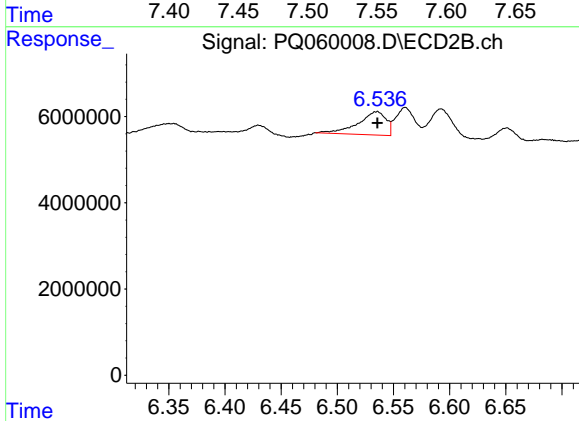
R.T.: 7.087 min
 Delta R.T.: -0.001 min
 Response: 4636705
 Conc: 13.92 ng/ml



#41 AR-1268-1

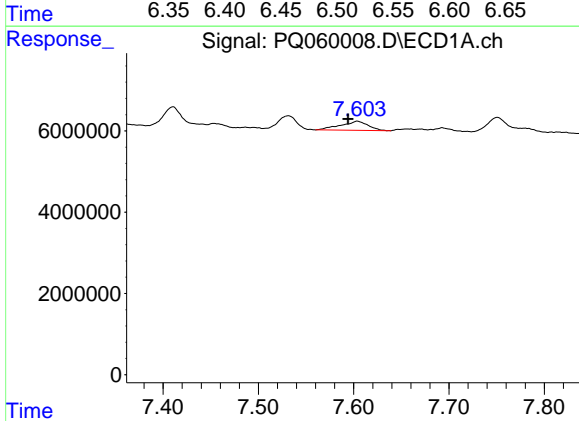
R.T.: 7.531 min
 Delta R.T.: 0.016 min
 Response: 4409286
 Conc: 3.52 ng/ml

Instrument :
 ECD_Q
 ClientSampleId :



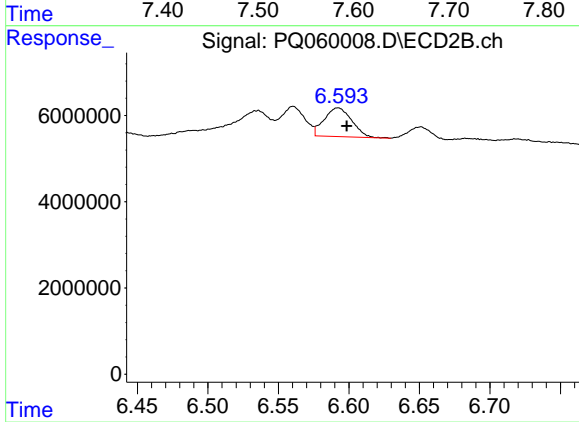
#41 AR-1268-1

R.T.: 6.535 min
 Delta R.T.: 0.000 min
 Response: 9358347
 Conc: 8.46 ng/ml



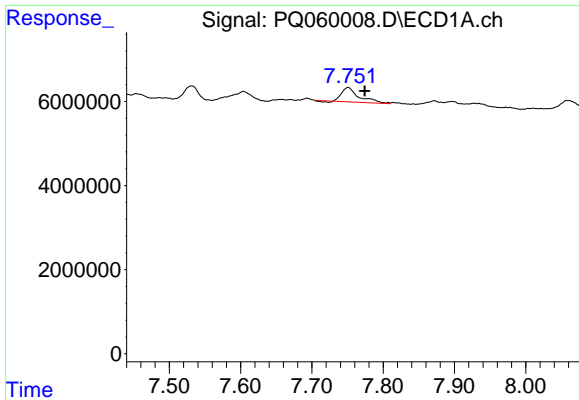
#42 AR-1268-2

R.T.: 7.604 min
 Delta R.T.: 0.010 min
 Response: 4516767
 Conc: 3.93 ng/ml



#42 AR-1268-2

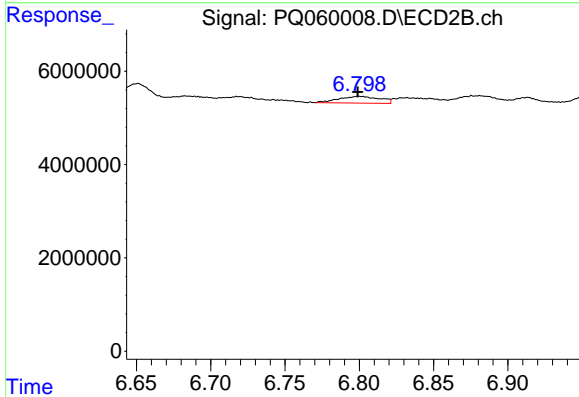
R.T.: 6.592 min
 Delta R.T.: -0.006 min
 Response: 9115140
 Conc: 8.91 ng/ml



#43 AR-1268-3

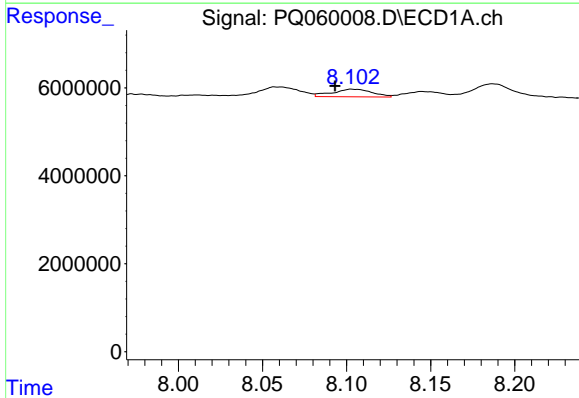
R.T.: 7.751 min
 Delta R.T.: -0.023 min
 Response: 5695798
 Conc: 6.15 ng/ml

Instrument :
 ECD_Q
 ClientSampleId :



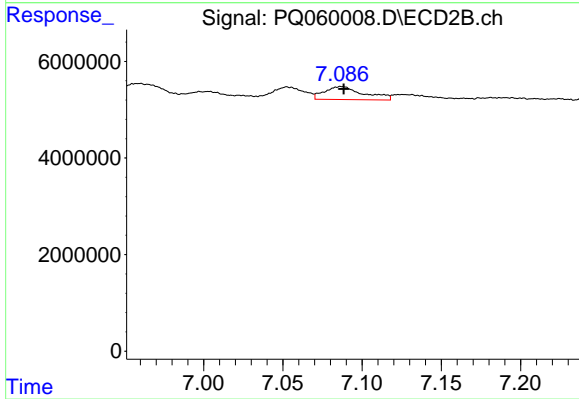
#43 AR-1268-3

R.T.: 6.800 min
 Delta R.T.: 0.000 min
 Response: 2766215
 Conc: 3.17 ng/ml



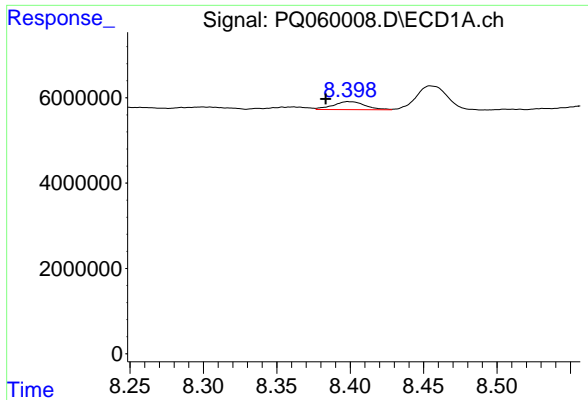
#44 AR-1268-4

R.T.: 8.103 min
 Delta R.T.: 0.010 min
 Response: 2840596
 Conc: 7.31 ng/ml



#44 AR-1268-4

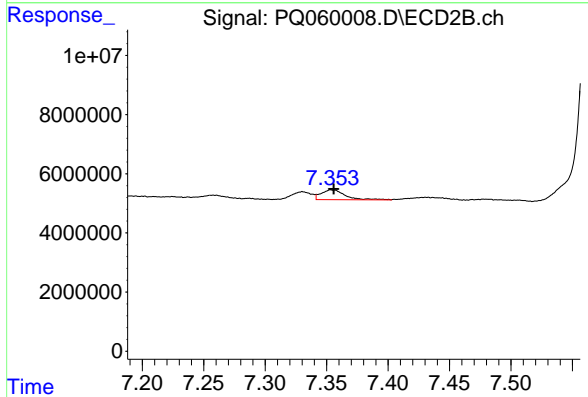
R.T.: 7.087 min
 Delta R.T.: -0.001 min
 Response: 4636705
 Conc: 12.31 ng/ml



#45 AR-1268-5

R.T.: 8.399 min
Delta R.T.: 0.015 min
Response: 2839102
Conc: 1.08 ng/ml

Instrument :
ECD_Q
ClientSampleId :



#45 AR-1268-5

R.T.: 7.354 min
Delta R.T.: -0.002 min
Response: 4578915
Conc: 1.64 ng/ml