

Data Path : Z:\pestpcbsrv\HPCHEM1\ECD_Q\Data\PQ110918\
 Data File : PQ034365.D
 Signal(s) : Signal #1: ECD1A.ch Signal #2: ECD2B.ch
 Acq On : 10 Nov 2018 00:13
 Operator : SM\SJ
 Sample : J5842-06
 Misc :
 ALS Vial : 37 Sample Multiplier: 1

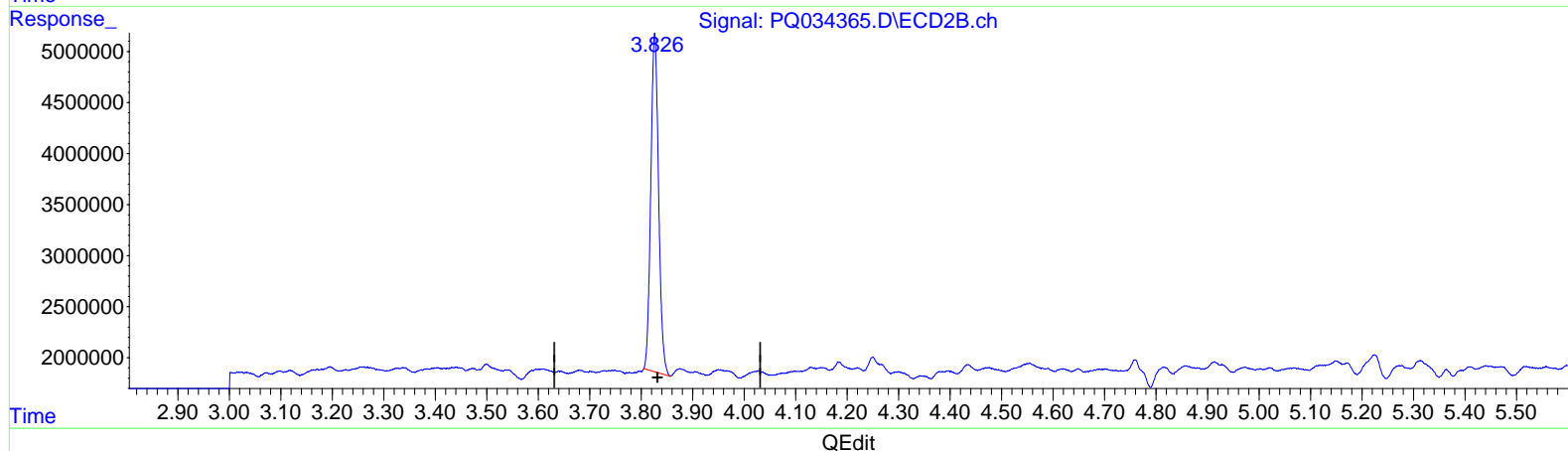
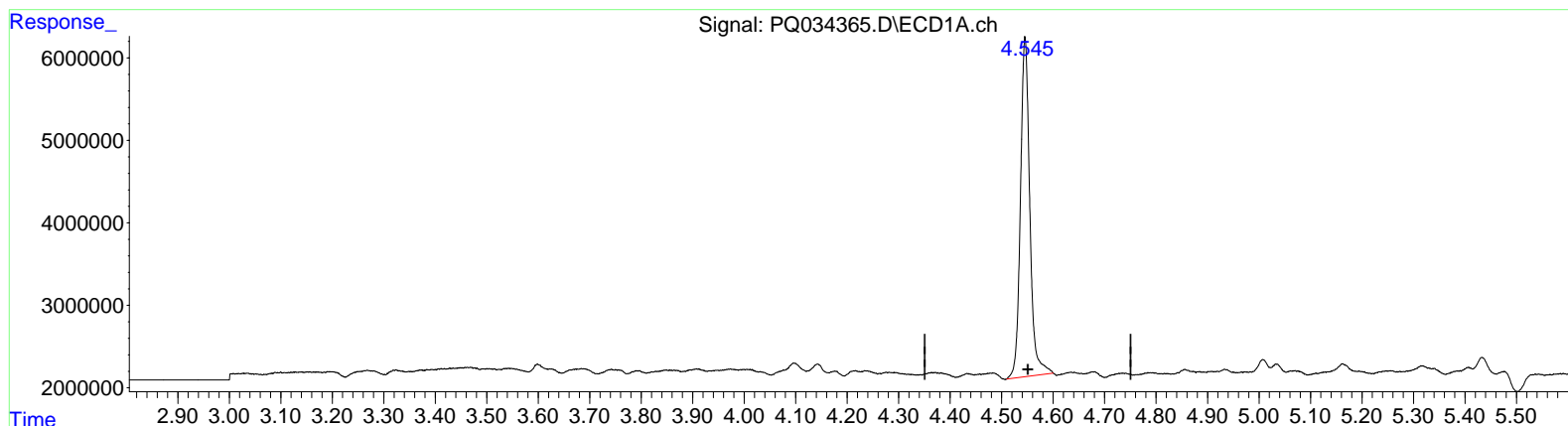
Instrument :
 ECD_Q
 ClientSampled :
 CB4G2

Manual Integrations
 APPROVED

Sohil
 11/13/2018 4:22:09 PM

Integration File signal 1: autoint1.e
 Integration File signal 2: autoint2.e
 Quant Time: Nov 10 03:37:37 2018
 Quant Method : Z:\pestpcbsrv\HPCHEM1\ECD_Q\Method\PQ110218CLP.M
 Quant Title : GC EXTRACTABLES
 QLast Update : Fri Nov 02 05:02:12 2018
 Response via : Initial Calibration
 Integrator: ChemStation

Volume Inj. : 1 µl
 Signal #1 Phase : ZB MR1 Signal #2 Phase: ZB MR2
 Signal #1 Info : 30Mx0.32mmx 0.5µm Signal #2 Info : 30M x 0.32mm x 0.25µm



(1) Tetrachloro-m-xylene (SA)

4.545min 17.972 ng/ml

response 52076499

(1) Tetrachloro-m-xylene #2 (SA)

3.826min 17.100 ng/ml

response 34878208

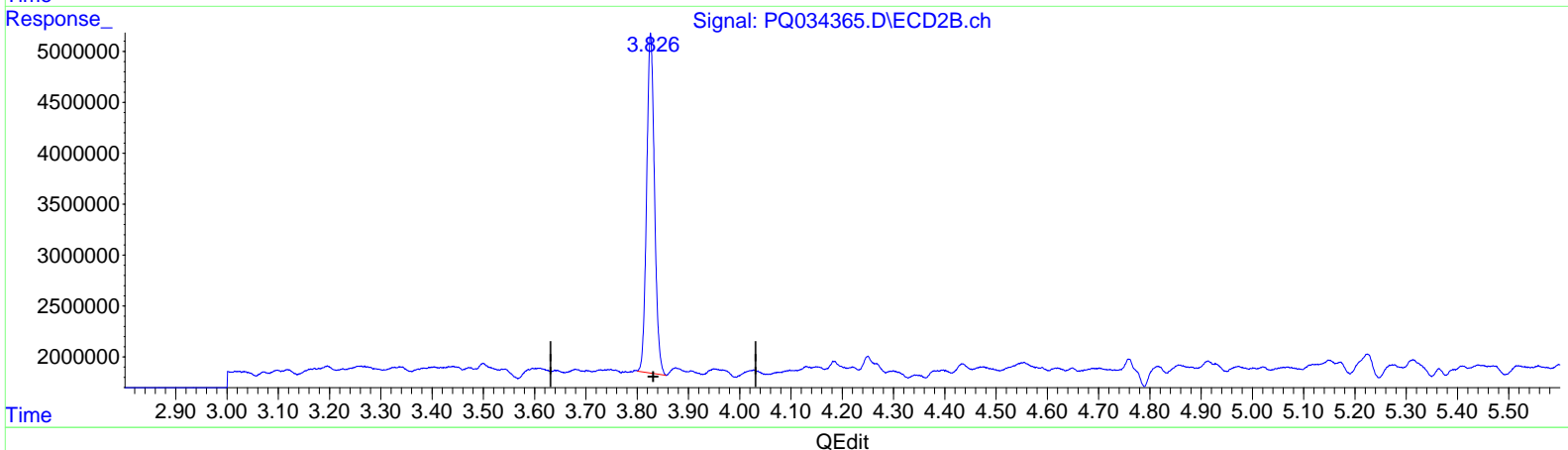
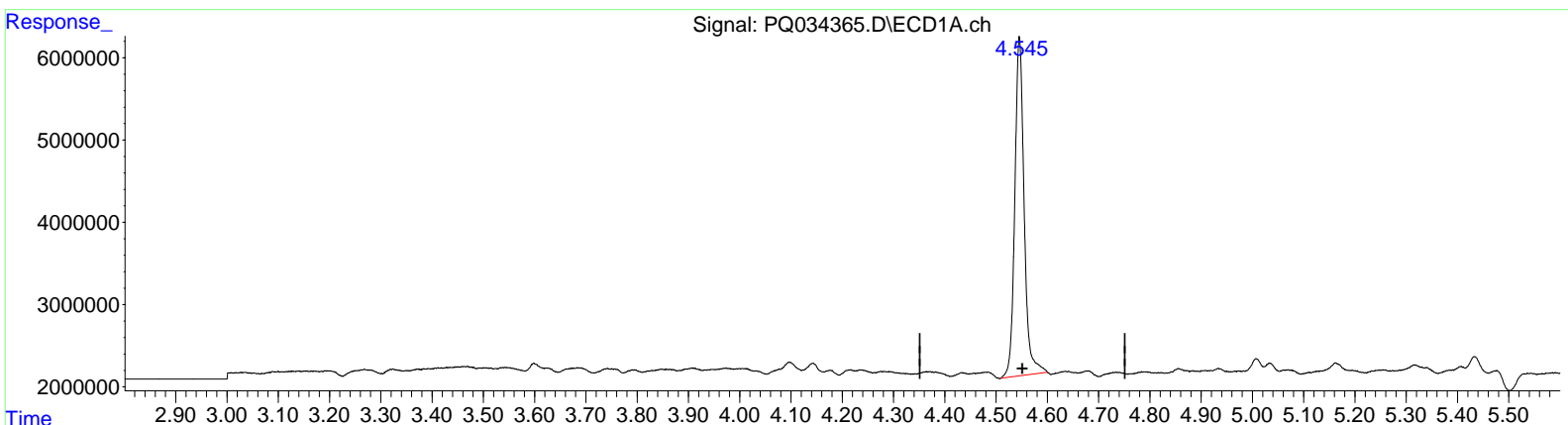
Data Path : Z:\pestpcbsrv\HPCHEM1\ECD_Q\Data\PQ110918\
 Data File : PQ034365.D
 Signal(s) : Signal #1: ECD1A.ch Signal #2: ECD2B.ch
 Acq On : 10 Nov 2018 00:13
 Operator : SM\SJ
 Sample : J5842-06
 Misc :
 ALS Vial : 37 Sample Multiplier: 1

Instrument :
 ECD_Q
ClientSampled :
 CB4G2

Manual Integrations
APPROVED
 Sohil
 11/13/2018 4:22:09 PM

Integration File signal 1: autoint1.e
 Integration File signal 2: autoint2.e
 Quant Time: Nov 10 03:37:37 2018
 Quant Method : Z:\pestpcbsrv\HPCHEM1\ECD_Q\Method\PQ110218CLP.M
 Quant Title : GC EXTRACTABLES
 QLast Update : Fri Nov 02 05:02:12 2018
 Response via : Initial Calibration
 Integrator: ChemStation

Volume Inj. : 1 µl
 Signal #1 Phase : ZB MR1 Signal #2 Phase: ZB MR2
 Signal #1 Info : 30Mx0.32mmx 0.5µm Signal #2 Info : 30M x 0.32mm x 0.25µm



(1) Tetrachloro-m-xylene (SA)

4.545min 17.972 ng/ml

response 52076499

(1) Tetrachloro-m-xylene #2 (SA)

3.826min 17.397 ng/ml m

response 35484159

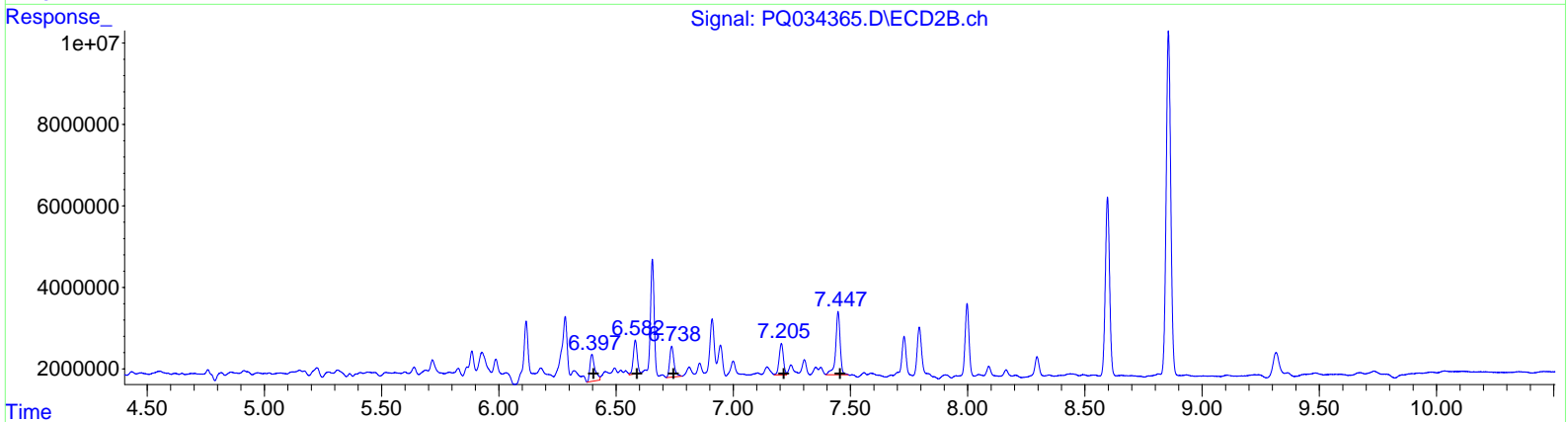
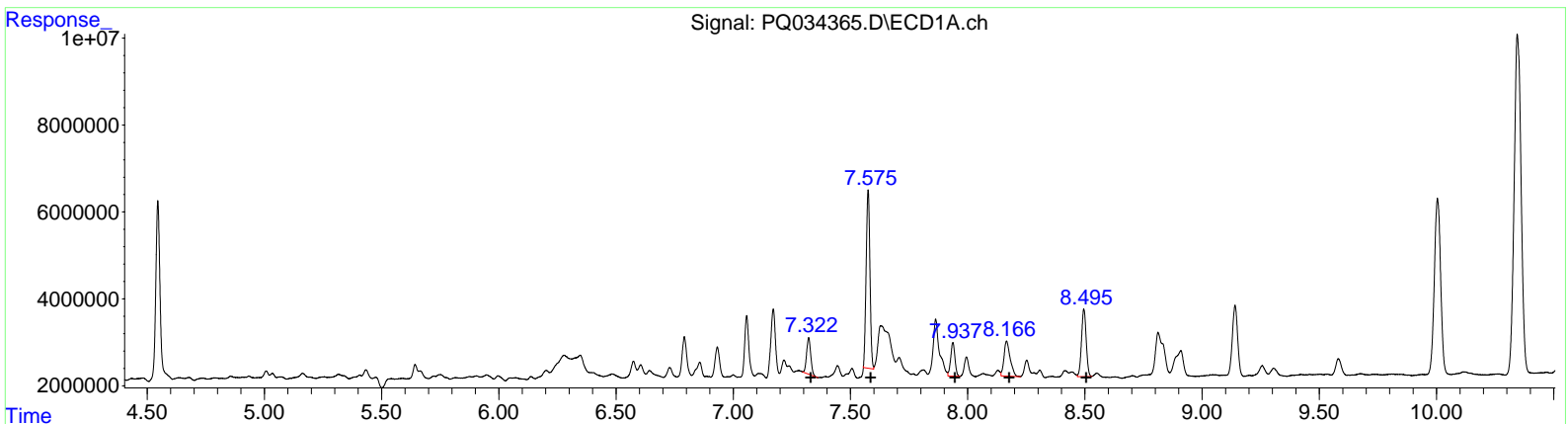
Data Path : Z:\pestpcbsrv\HPCHEM1\ECD_Q\Data\PQ110918\
 Data File : PQ034365.D
 Signal(s) : Signal #1: ECD1A.ch Signal #2: ECD2B.ch
 Acq On : 10 Nov 2018 00:13
 Operator : SM\SJ
 Sample : J5842-06
 Misc :
 ALS Vial : 37 Sample Multiplier: 1

Instrument :
 ECD_Q
Client Sampled :
 CB4G2

Manual Integrations
APPROVED
 Sohil
 11/13/2018 4:22:09 PM

Integration File signal 1: autoint1.e
 Integration File signal 2: autoint2.e
 Quant Time: Nov 10 03:37:37 2018
 Quant Method : Z:\pestpcbsrv\HPCHEM1\ECD_Q\Method\PQ110218CLP.M
 Quant Title : GC EXTRACTABLES
 QLast Update : Fri Nov 02 05:02:12 2018
 Response via : Initial Calibration
 Integrator: ChemStation

Volume Inj. : 1 µl
 Signal #1 Phase : ZB MR1 Signal #2 Phase: ZB MR2
 Signal #1 Info : 30Mx0.32mmx 0.5µm Signal #2 Info : 30M x 0.32mm x 0.25µm



QEdit

(31) AR-1260-1 (L7)

R.T.	Response	Conc
7.32	10254446	83.80
7.58	45923759	322.42
7.94	9764351	118.80
8.17	14756311	137.80
8.50	21512182	104.44

(31) AR-1260-1 #2 (L7)

R.T.	Response	Conc
6.40	9523529	86.24
6.58	9466950	71.17
6.74	9740011	79.15
7.21	9719979	114.89
7.45	20457190	99.64

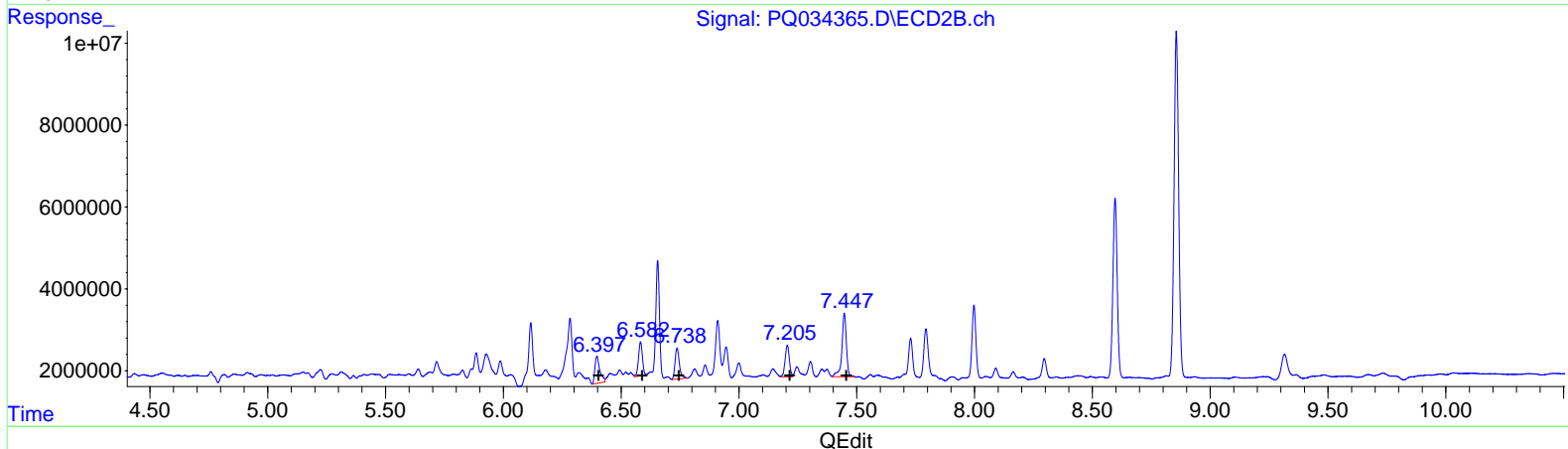
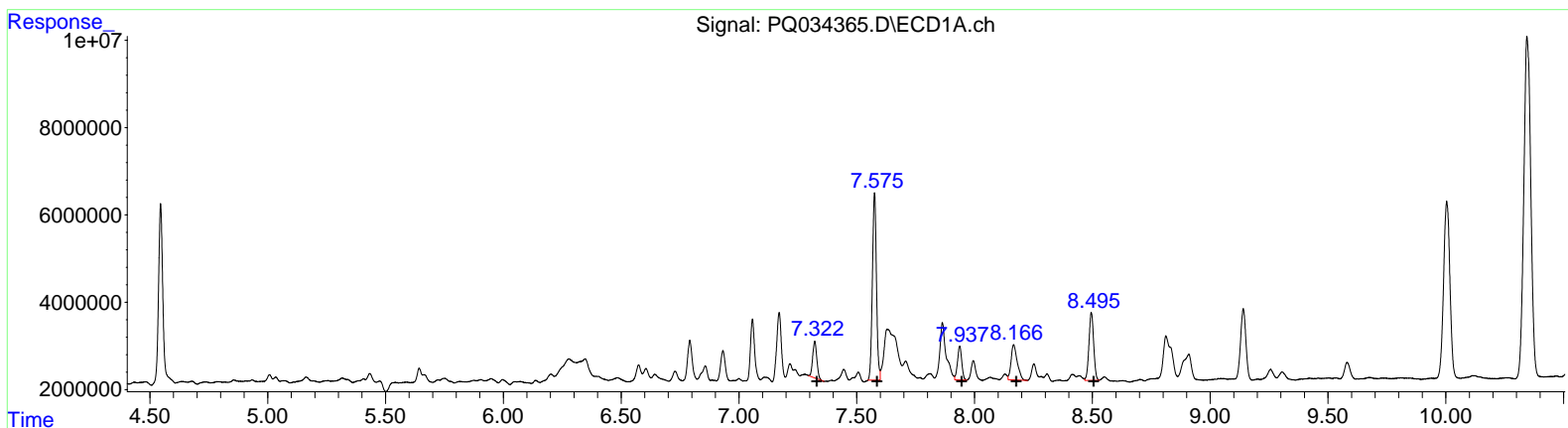
Data Path : Z:\pestpcbsrv\HPCHEM1\ECD_Q\Data\PQ110918\
 Data File : PQ034365.D
 Signal(s) : Signal #1: ECD1A.ch Signal #2: ECD2B.ch
 Acq On : 10 Nov 2018 00:13
 Operator : SM\SJ
 Sample : J5842-06
 Misc :
 ALS Vial : 37 Sample Multiplier: 1

Instrument :
 ECD_Q
Client Sampled :
 CB4G2

Manual Integrations
APPROVED
 Sohil
 11/13/2018 4:22:09 PM

Integration File signal 1: autoint1.e
 Integration File signal 2: autoint2.e
 Quant Time: Nov 10 03:37:37 2018
 Quant Method : Z:\pestpcbsrv\HPCHEM1\ECD_Q\Method\PQ110218CLP.M
 Quant Title : GC EXTRACTABLES
 QLast Update : Fri Nov 02 05:02:12 2018
 Response via : Initial Calibration
 Integrator: ChemStation

Volume Inj. : 1 µl
 Signal #1 Phase : ZB MR1 Signal #2 Phase: ZB MR2
 Signal #1 Info : 30Mx0.32mmx 0.5µm Signal #2 Info : 30M x 0.32mm x 0.25µm



(31) AR-1260-1 #2 (L7)

R.T.	Response	Conc
7.32	10254446	83.80
7.58	51175734	359.29
7.94	9764351	118.80
8.17	14756311	137.80
8.50	21512182	104.44

(31) AR-1260-1 #2 (L7)

R.T.	Response	Conc
6.40	9523529	86.24
6.58	9466950	71.17
6.74	9740011	79.15
7.21	9719979	114.89
7.45	20457190	99.64

Quantitation Report (QT Reviewed)

Data Path : Z:\pestpcbsrv\HPCHEM1\ECD_Q\Data\PQ110918\
 Data File : PQ034365.D
 Signal(s) : Signal #1: ECD1A.ch Signal #2: ECD2B.ch
 Acq On : 10 Nov 2018 00:13
 Operator : SM\SJ
 Sample : J5842-06
 Misc :
 ALS Vial : 37 Sample Multiplier: 1

Instrument :
 ECD_Q
 Client Sampled :
 CB4G2

Manual Integrations
 APPROVED

Sohil
 11/13/2018 4:22:09 PM

Integration File signal 1: autoint1.e
 Integration File signal 2: autoint2.e
 Quant Time: Nov 10 03:37:37 2018
 Quant Method : Z:\pestpcbsrv\HPCHEM1\ECD_Q\Method\PQ110218CLP.M
 Quant Title : GC EXTRACTABLES
 QLast Update : Fri Nov 02 05:02:12 2018
 Response via : Initial Calibration
 Integrator: ChemStation

Volume Inj. : 1 µl
 Signal #1 Phase : ZB MR1 Signal #2 Phase: ZB MR2
 Signal #1 Info : 30Mx0.32mmx 0.5µm Signal #2 Info : 30M x 0.32mm x 0.25µm

Compound	RT#1	RT#2	Resp#1	Resp#2	ng/ml	ng/ml

System Monitoring Compounds						
1) SA Tetrachlo...	4.545	3.826	52076499	35484159	17.972	17.397m
2) SA Decachlor...	10.345	8.856	161.3E6	114.3E6	77.724	66.210
Target Compounds						
31) L7 AR-1260-1	7.322	6.397	10254446	9523529	83.796	86.239
32) L7 AR-1260-2	7.575	6.582	51175734	9466950	359.293m	71.168 #
33) L7 AR-1260-3	7.937	6.738	9764351	9740011	118.798	79.153 #
34) L7 AR-1260-4	8.166	7.205	14756311	9719979	137.795	114.894
35) L7 AR-1260-5	8.495	7.447	21512182	20457190	104.443	99.639

} S.J 11/19/18
 } S.J 11/19/18

(f)=RT Delta > 1/2 Window (#)=Amounts differ by > 25% (m)=manual int.