

Data Path : Z:\pestpcbsrv\HPCHEM1\ECD\_Q\Data\PQ110923\  
 Data File : PQ063872.D  
 Signal(s) : Signal #1: ECD1A.ch Signal #2: ECD2B.ch  
 Acq On : 09 Nov 2023 22:09  
 Operator : YP\AJ  
 Sample : 05322-03 10X  
 Misc :  
 ALS Vial : 28 Sample Multiplier: 1

Instrument :  
 ECD\_Q  
 ClientSampleId :  
 KMH777E-1-1

Integration File signal 1: autoint1.e  
 Integration File signal 2: autoint2.e  
 Quant Time: Nov 09 23:25:54 2023  
 Quant Method : Z:\pestpcbsrv\HPCHEM1\ECD\_Q\Method\PQ110823.M  
 Quant Title : GC EXTRACTABLES  
 QLast Update : Wed Nov 08 18:43:53 2023  
 Response via : Initial Calibration  
 Integrator: ChemStation

Volume Inj. : 2 µl  
 Signal #1 Phase : ZB-MR1 Signal #2 Phase: ZB-MR2  
 Signal #1 Info : 30Mx0.32mmx 0.50µ Signal #2 Info : 30M x 0.32mm x 0.25µm

Compound	RT#1	RT#2	Resp#1	Resp#2	ng/ml	ng/ml
-----						
System Monitoring Compounds						
1) SA Tetrachlo...	3.460	2.778	6078282	6889652	1.426	1.873 #
2) SA Decachlor...	8.693	7.576	5132688	5032723	1.590	1.074 #

Target Compounds

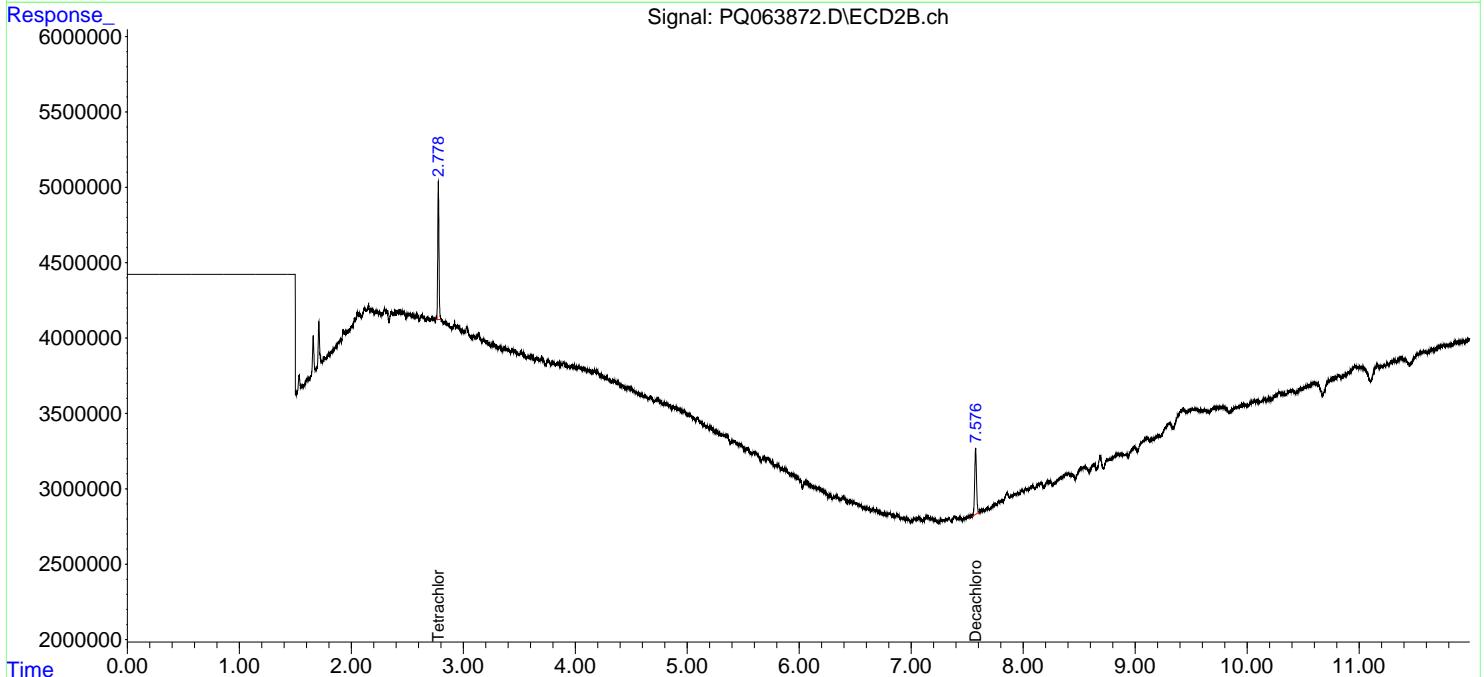
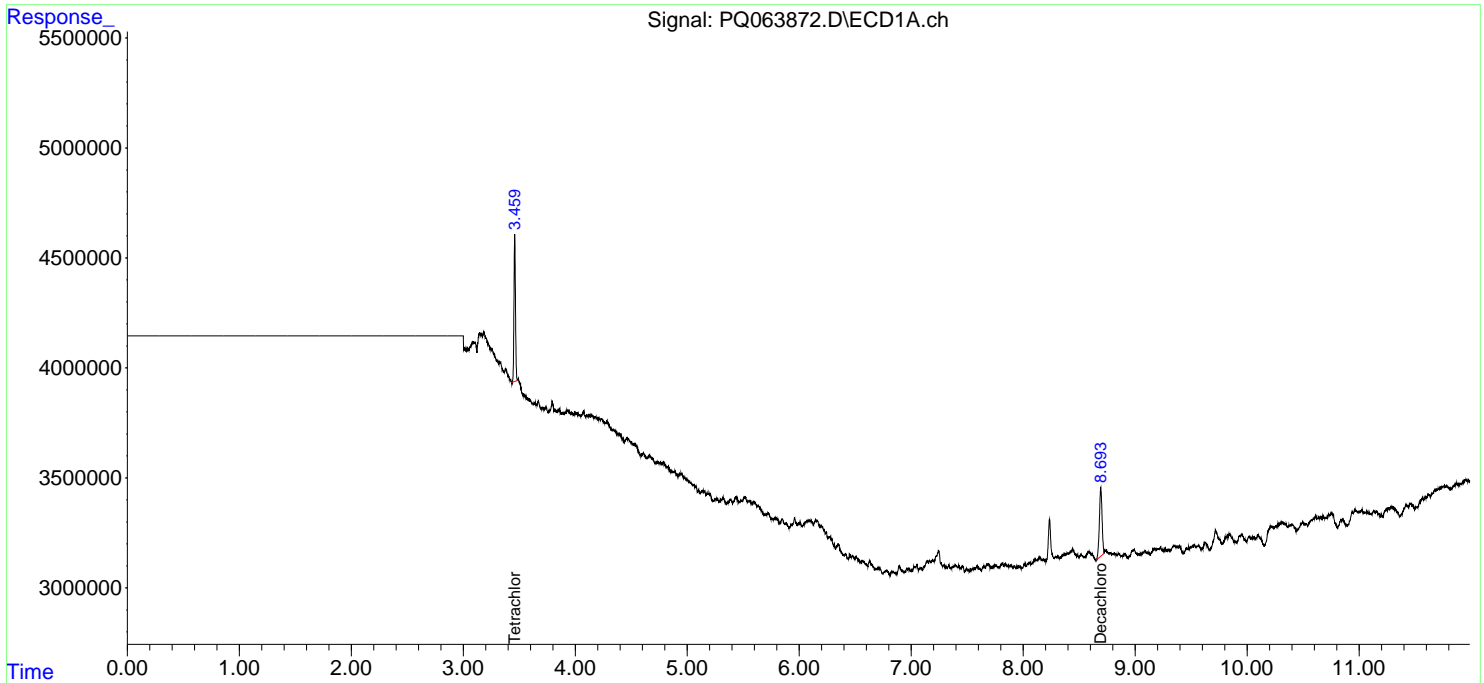
(f)=RT Delta > 1/2 Window (#)=Amounts differ by > 25% (m)=manual int.

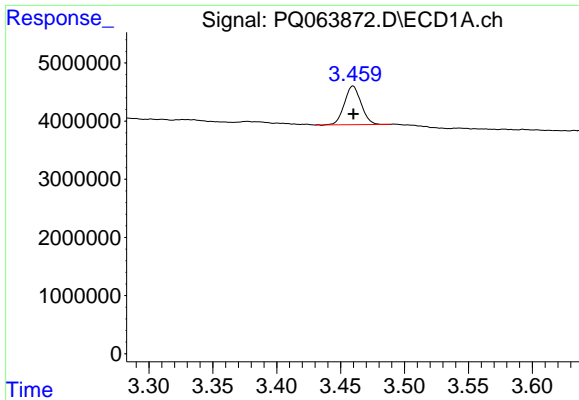
Data Path : Z:\pestpcbsrv\HPCHEM1\ECD\_Q\Data\PQ110923\  
 Data File : PQ063872.D  
 Signal(s) : Signal #1: ECD1A.ch Signal #2: ECD2B.ch  
 Acq On : 09 Nov 2023 22:09  
 Operator : YP\AJ  
 Sample : 05322-03 10X  
 Misc :  
 ALS Vial : 28 Sample Multiplier: 1

Instrument :  
 ECD\_Q  
 ClientSampleId :  
 KMH777E-1-1

Integration File signal 1: autoint1.e  
 Integration File signal 2: autoint2.e  
 Quant Time: Nov 09 23:25:54 2023  
 Quant Method : Z:\pestpcbsrv\HPCHEM1\ECD\_Q\Method\PQ110823.M  
 Quant Title : GC EXTRACTABLES  
 QLast Update : Wed Nov 08 18:43:53 2023  
 Response via : Initial Calibration  
 Integrator: ChemStation

Volume Inj. : 2 µl  
 Signal #1 Phase : ZB-MR1 Signal #2 Phase: ZB-MR2  
 Signal #1 Info : 30Mx0.32mmx 0.50µ Signal #2 Info : 30M x 0.32mm x 0.25µm

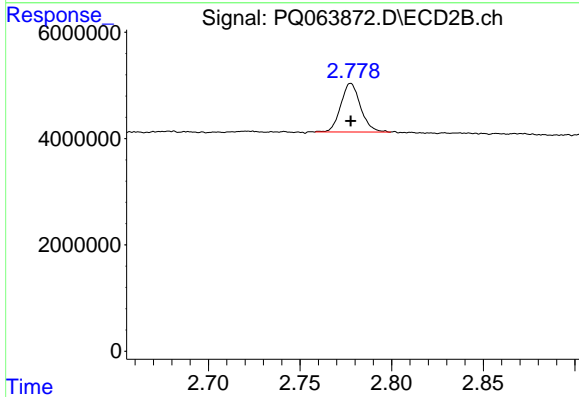




#1 Tetrachloro-m-xylene

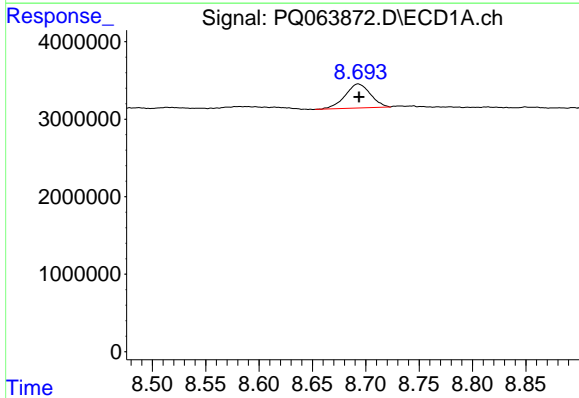
R.T.: 3.460 min  
 Delta R.T.: 0.000 min  
 Response: 6078282  
 Conc: 1.43 ng/ml

Instrument :  
 ECD\_Q  
 ClientSampleId :  
 KMH777E-1-1



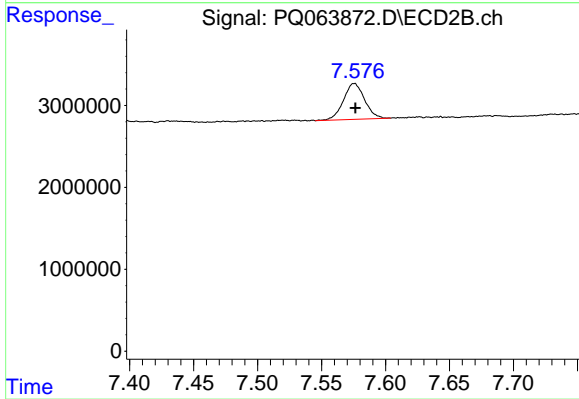
#1 Tetrachloro-m-xylene

R.T.: 2.778 min  
 Delta R.T.: 0.000 min  
 Response: 6889652  
 Conc: 1.87 ng/ml



#2 Decachlorobiphenyl

R.T.: 8.693 min  
 Delta R.T.: 0.000 min  
 Response: 5132688  
 Conc: 1.59 ng/ml



#2 Decachlorobiphenyl

R.T.: 7.576 min  
 Delta R.T.: 0.000 min  
 Response: 5032723  
 Conc: 1.07 ng/ml