

Data Path : Z:\pestpcbsrv\HPCHEM1\ECD_Q\Data\PQ110923\
 Data File : PQ063907.D
 Signal(s) : Signal #1: ECD1A.ch Signal #2: ECD2B.ch
 Acq On : 10 Nov 2023 07:42
 Operator : YP\AJ
 Sample : 05311-16MSD
 Misc :
 ALS Vial : 53 Sample Multiplier: 1

Instrument :
 ECD_Q
ClientSampleId :
 TP-6MSD

Manual Integrations
APPROVED

Reviewed By :Yogesh Patel 11/10/2023
 Supervised By :Ankita Jodhani 11/10/2023

Integration File signal 1: autoint1.e
 Integration File signal 2: autoint2.e
 Quant Time: Nov 10 08:06:52 2023
 Quant Method : Z:\pestpcbsrv\HPCHEM1\ECD_Q\Method\PQ110823.M
 Quant Title : GC EXTRACTABLES
 QLast Update : Wed Nov 08 18:43:53 2023
 Response via : Initial Calibration
 Integrator: ChemStation

Volume Inj. : 2 µl
 Signal #1 Phase : ZB-MR2 Signal #2 Phase: ZB-MR2
 Signal #1 Info : 30Mx0.32mmx 0.50µ Signal #2 Info : 30M x 0.32mm x 0.25µm

Compound	RT#1	RT#2	Resp#1	Resp#2	ng/ml	ng/ml

System Monitoring Compounds						
1) SA Tetrachlo...	3.460	2.777	86112870	79014611	20.203	21.485m
2) SA Decachlor...	8.691	7.574	48882529	77833361	15.140	16.612
Target Compounds						
3) L1 AR-1016-1	4.575	3.787	69895314	66366168	507.186	526.808
4) L1 AR-1016-2	4.594	3.803	107.7E6	95678986	509.877	528.087
5) L1 AR-1016-3	4.652	3.964	65886692	51574184	494.725	529.238
6) L1 AR-1016-4	4.745	4.013	52568299	51303261	499.992	608.097
7) L1 AR-1016-5	5.035	4.209	56638651	56963776	534.609	569.575
26) L6 AR-1254-1	5.404	4.547	86226056	93736659	549.386	482.275
27) L6 AR-1254-2	5.623	4.695	107.8E6	102.4E6	454.646	587.685 #
28) L6 AR-1254-3	5.979	5.079	152.7E6	213.1E6	615.683	796.062 #
29) L6 AR-1254-4	6.265	5.306	89593452	83144155	494.384	473.945
30) L6 AR-1254-5	6.680	5.714	297.3E6	335.0E6	1490.748	1314.014
31) L7 AR-1260-1	6.145	5.209	162.9E6	179.8E6	795.714	909.247
32) L7 AR-1260-2	6.406	5.400	197.8E6	210.0E6	818.735	879.692
33) L7 AR-1260-3	6.762	5.539	89153311	187.4E6	553.915	829.674 #
34) L7 AR-1260-4	6.979	6.006	110.5E6	98404460	598.855	571.914
35) L7 AR-1260-5	7.293	6.253	196.6E6	232.3E6	553.110	582.037

(f)=RT Delta > 1/2 Window (#)=Amounts differ by > 25% (m)=manual int.

Data Path : Z:\pestpcbsrv\HPCHEM1\ECD_Q\Data\PQ110923\
Data File : PQ063907.D
Signal(s) : Signal #1: ECD1A.ch Signal #2: ECD2B.ch
Acq On : 10 Nov 2023 07:42
Operator : YP\AJ
Sample : 05311-16MSD
Misc :
ALS Vial : 53 Sample Multiplier: 1

Instrument :

ECD_Q

ClientSampleId :

TP-6MSD

Manual Integrations

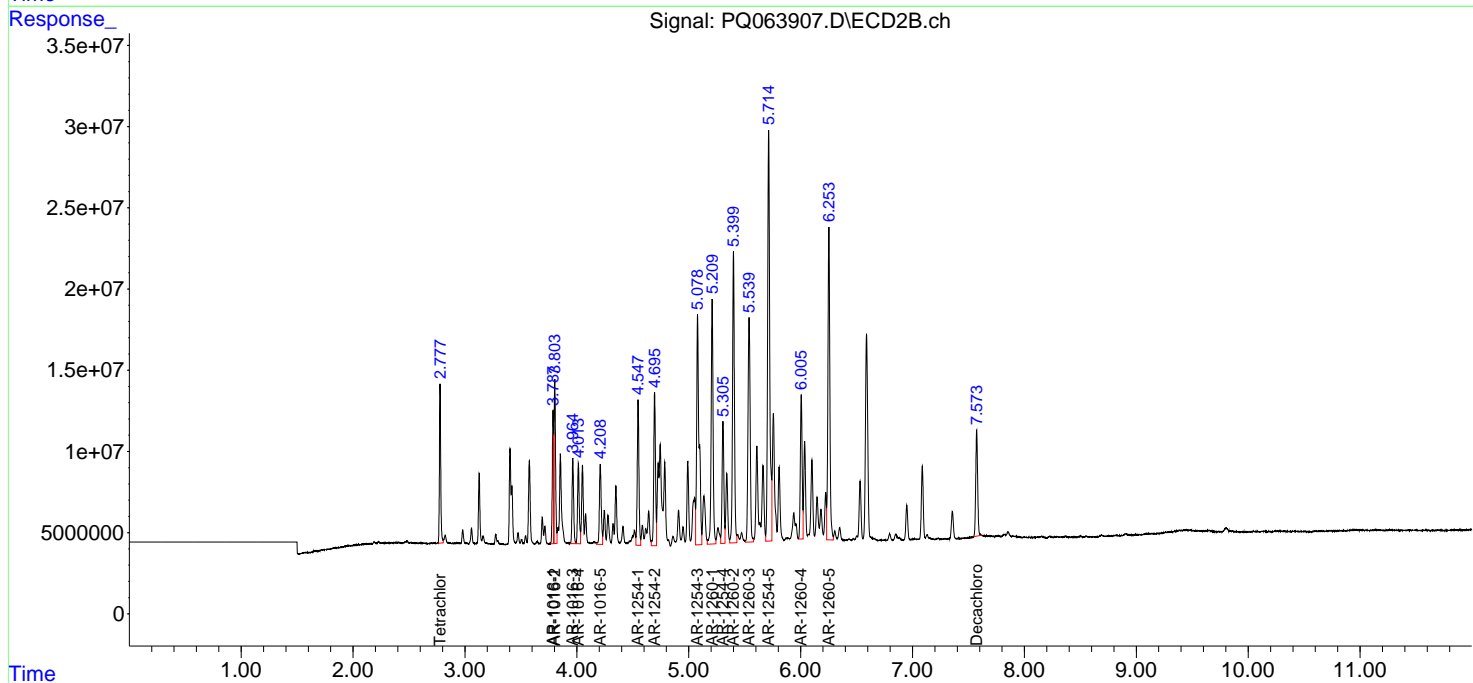
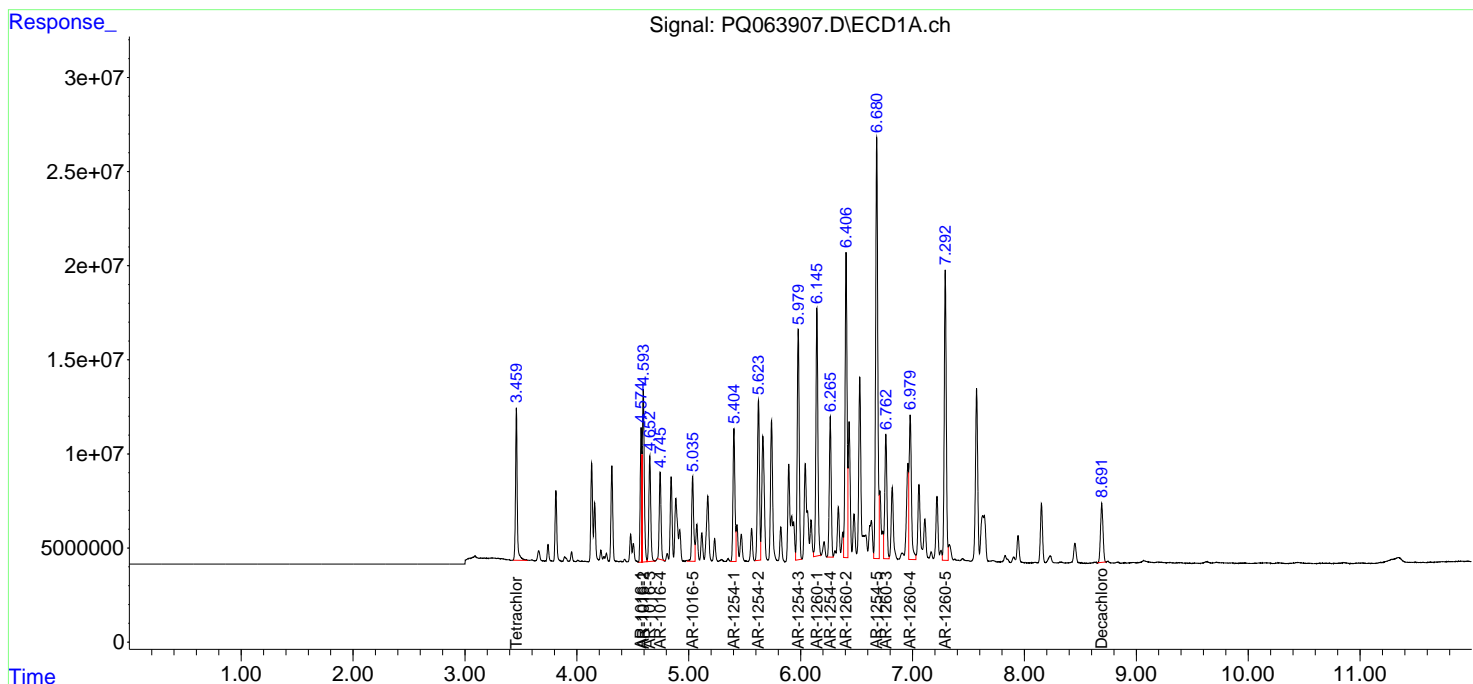
APPROVED

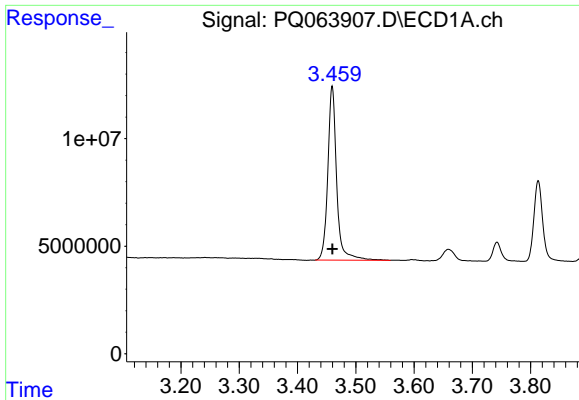
Reviewed By :Yogesh Patel 11/10/2023

Supervised By :Ankita Jodhani 11/10/2023

Integration File signal 1: autoint1.e
Integration File signal 2: autoint2.e
Quant Time: Nov 10 08:06:52 2023
Quant Method : Z:\pestpcbsrv\HPCHEM1\ECD_Q\Method\PQ110823.M
Quant Title : GC EXTRACTABLES
QLast Update : Wed Nov 08 18:43:53 2023
Response via : Initial Calibration
Integrator: ChemStation

Volume Inj. : 2 µl
Signal #1 Phase : ZB-MR1 Signal #2 Phase: ZB-MR2
Signal #1 Info : 30Mx0.32mmx 0.50µ Signal #2 Info : 30M x 0.32mm x 0.25µm



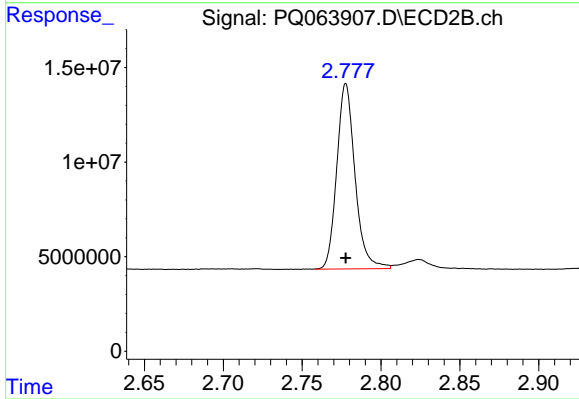


#1 Tetrachloro-m-xylene
 R.T.: 3.460 min
 Delta R.T.: 0.000 min
 Response: 86112870
 Conc: 20.20 ng/ml

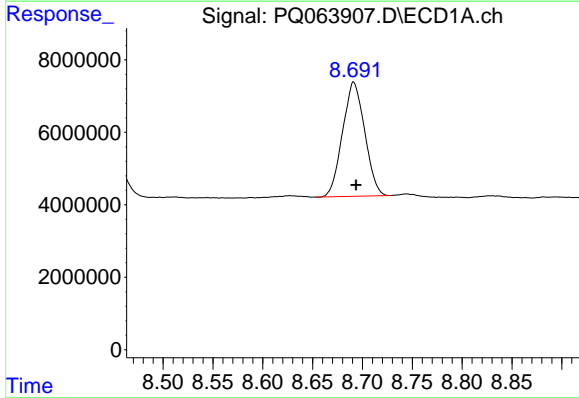
Instrument :
 ECD_Q
 ClientSampleId :
 TP-6MSD

Manual Integrations
 APPROVED

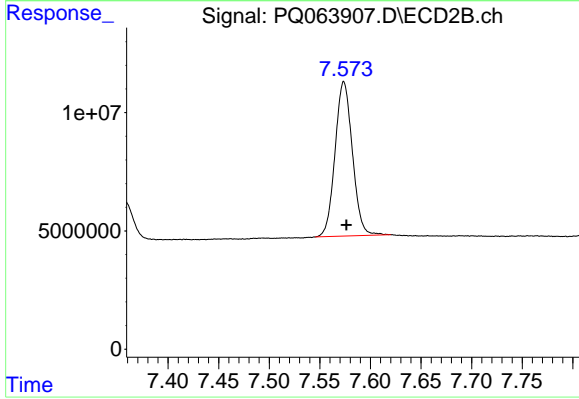
Reviewed By :Yogesh Patel 11/10/2023
 Supervised By :Ankita Jodhani 11/10/2023



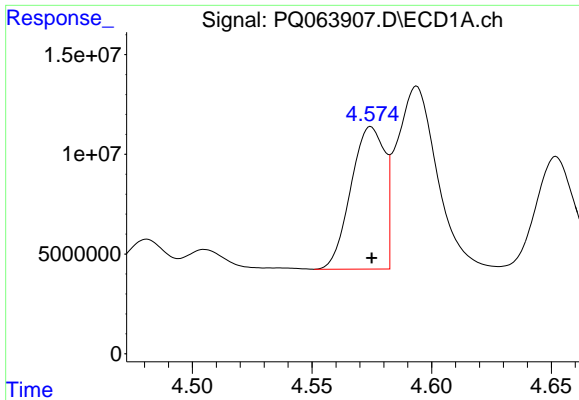
#1 Tetrachloro-m-xylene
 R.T.: 2.777 min
 Delta R.T.: 0.000 min
 Response: 79014611
 Conc: 21.48 ng/ml m



#2 Decachlorobiphenyl
 R.T.: 8.691 min
 Delta R.T.: -0.003 min
 Response: 48882529
 Conc: 15.14 ng/ml



#2 Decachlorobiphenyl
 R.T.: 7.574 min
 Delta R.T.: -0.003 min
 Response: 77833361
 Conc: 16.61 ng/ml



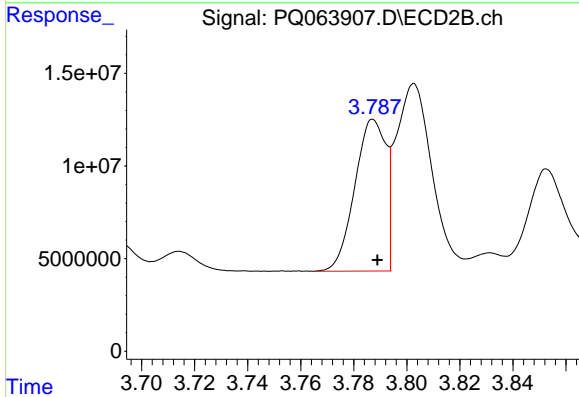
#3 AR-1016-1

R.T.: 4.575 min
 Delta R.T.: 0.000 min
 Response: 69895314
 Conc: 507.19 ng/ml

Instrument : ECD_Q
 ClientSampleId : TP-6MSD

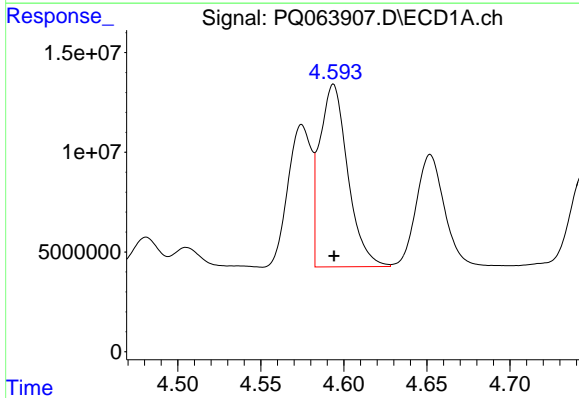
Manual Integrations
 APPROVED

Reviewed By :Yogesh Patel 11/10/2023
 Supervised By :Ankita Jodhani 11/10/2023



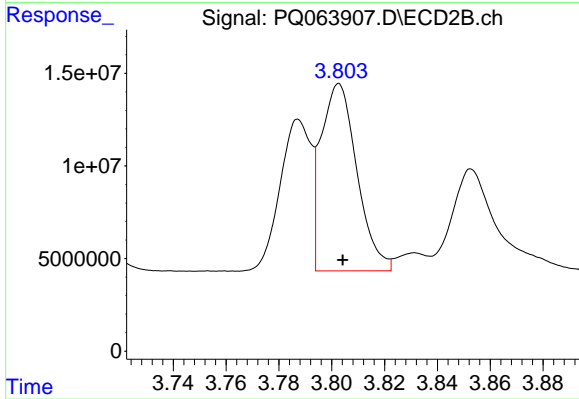
#3 AR-1016-1

R.T.: 3.787 min
 Delta R.T.: -0.002 min
 Response: 66366168
 Conc: 526.81 ng/ml



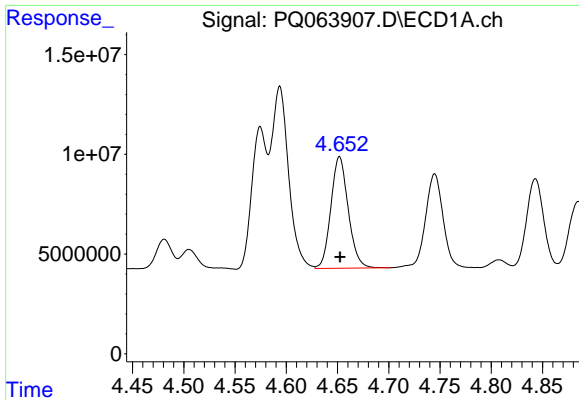
#4 AR-1016-2

R.T.: 4.594 min
 Delta R.T.: 0.000 min
 Response: 107692161
 Conc: 509.88 ng/ml



#4 AR-1016-2

R.T.: 3.803 min
 Delta R.T.: -0.001 min
 Response: 95678986
 Conc: 528.09 ng/ml



#5 AR-1016-3

R.T.: 4.652 min
 Delta R.T.: 0.000 min
 Response: 65886692
 Conc: 494.72 ng/ml

Instrument :

ECD_Q

ClientSampleId :

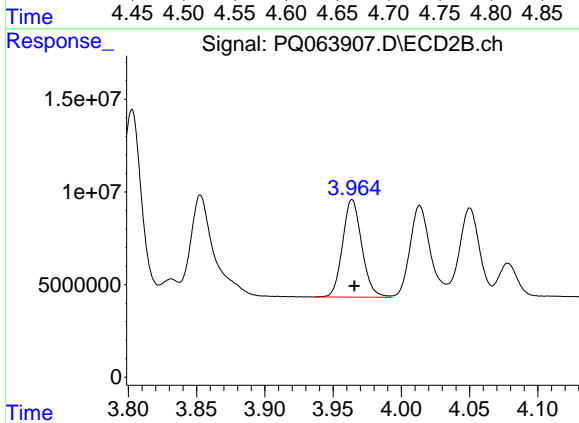
TP-6MSD

Manual Integrations

APPROVED

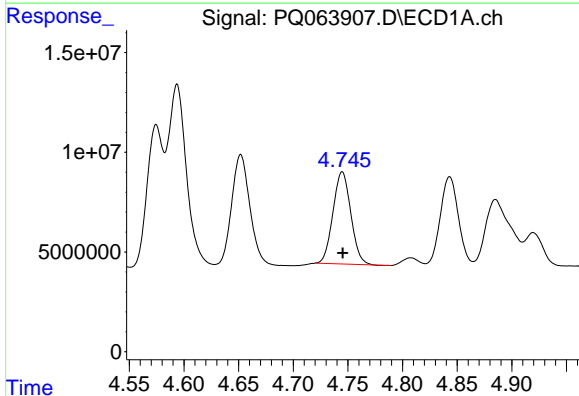
Reviewed By :Yogesh Patel 11/10/2023

Supervised By :Ankita Jodhani 11/10/2023



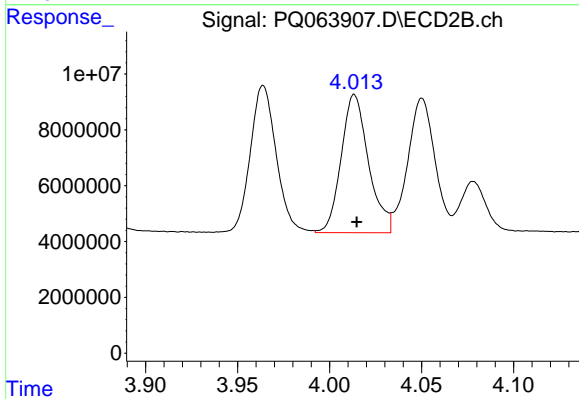
#5 AR-1016-3

R.T.: 3.964 min
 Delta R.T.: -0.002 min
 Response: 51574184
 Conc: 529.24 ng/ml



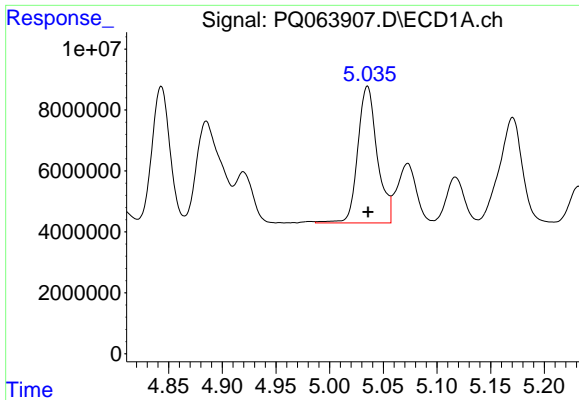
#6 AR-1016-4

R.T.: 4.745 min
 Delta R.T.: 0.000 min
 Response: 52568299
 Conc: 499.99 ng/ml



#6 AR-1016-4

R.T.: 4.013 min
 Delta R.T.: -0.001 min
 Response: 51303261
 Conc: 608.10 ng/ml



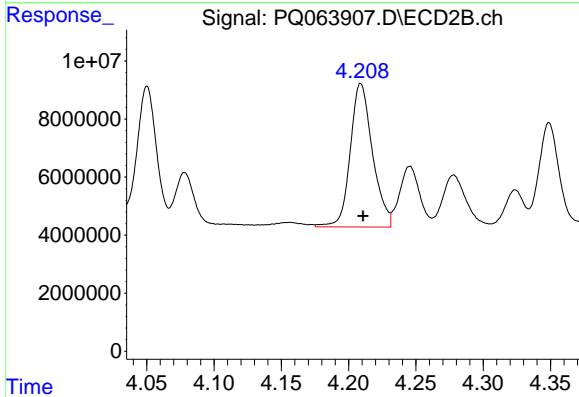
#7 AR-1016-5

R.T.: 5.035 min
 Delta R.T.: 0.000 min
 Response: 56638651
 Conc: 534.61 ng/ml

Instrument :
 ECD_Q
 ClientSampleId :
 TP-6MSD

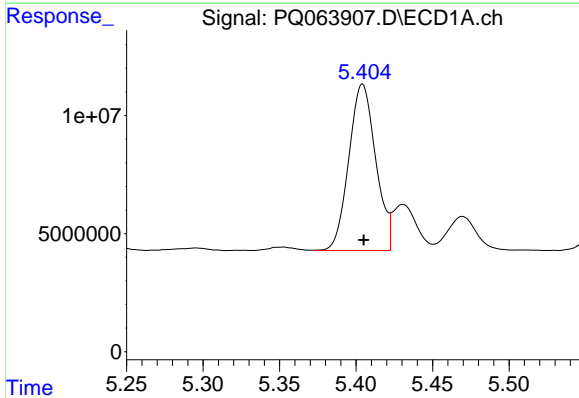
Manual Integrations
 APPROVED

Reviewed By :Yogesh Patel 11/10/2023
 Supervised By :Ankita Jodhani 11/10/2023



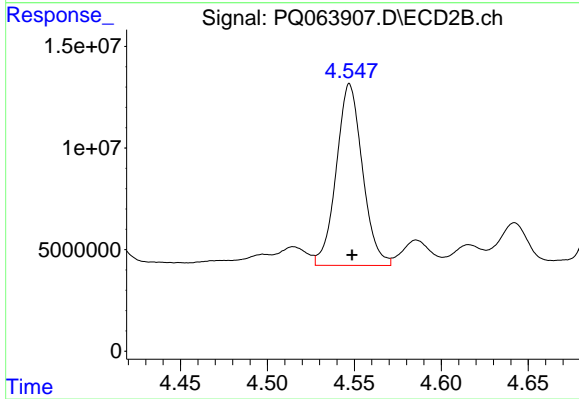
#7 AR-1016-5

R.T.: 4.209 min
 Delta R.T.: -0.002 min
 Response: 56963776
 Conc: 569.58 ng/ml



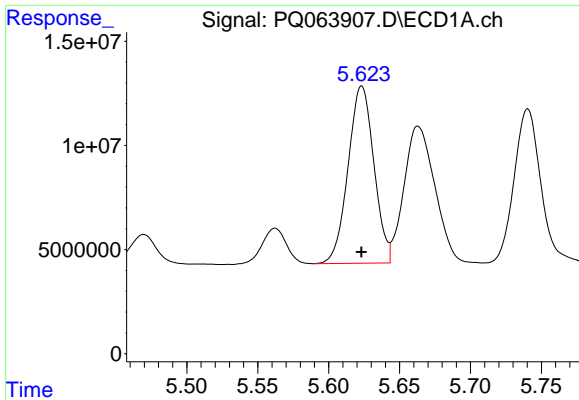
#26 AR-1254-1

R.T.: 5.404 min
 Delta R.T.: 0.000 min
 Response: 86226056
 Conc: 549.39 ng/ml



#26 AR-1254-1

R.T.: 4.547 min
 Delta R.T.: -0.001 min
 Response: 93736659
 Conc: 482.28 ng/ml



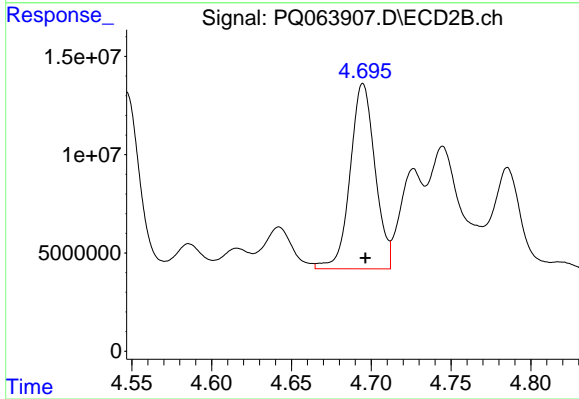
#27 AR-1254-2

R.T.: 5.623 min
 Delta R.T.: 0.000 min
 Response: 107821767
 Conc: 454.65 ng/ml

Instrument :
 ECD_Q
 ClientSampleId :
 TP-6MSD

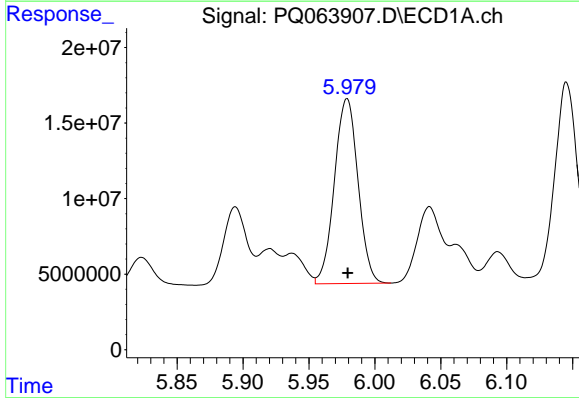
Manual Integrations
 APPROVED

Reviewed By :Yogesh Patel 11/10/2023
 Supervised By :Ankita Jodhani 11/10/2023



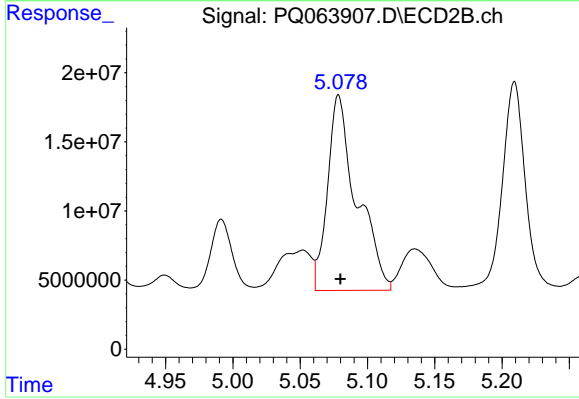
#27 AR-1254-2

R.T.: 4.695 min
 Delta R.T.: -0.002 min
 Response: 102377413
 Conc: 587.69 ng/ml



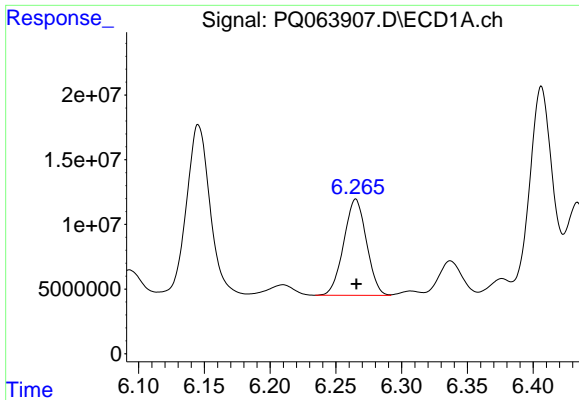
#28 AR-1254-3

R.T.: 5.979 min
 Delta R.T.: 0.000 min
 Response: 152653277
 Conc: 615.68 ng/ml



#28 AR-1254-3

R.T.: 5.079 min
 Delta R.T.: -0.001 min
 Response: 213081927
 Conc: 796.06 ng/ml



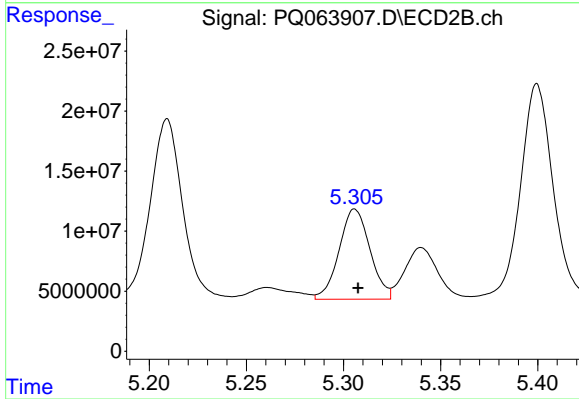
#29 AR-1254-4

R.T.: 6.265 min
 Delta R.T.: 0.000 min
 Response: 89593452
 Conc: 494.38 ng/ml

Instrument :
 ECD_Q
 ClientSampleId :
 TP-6MSD

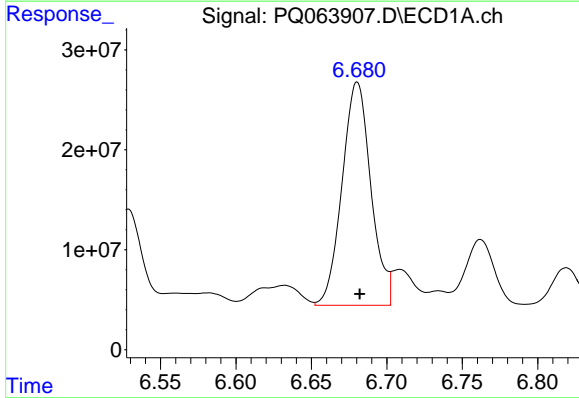
Manual Integrations
 APPROVED

Reviewed By :Yogesh Patel 11/10/2023
 Supervised By :Ankita Jodhani 11/10/2023



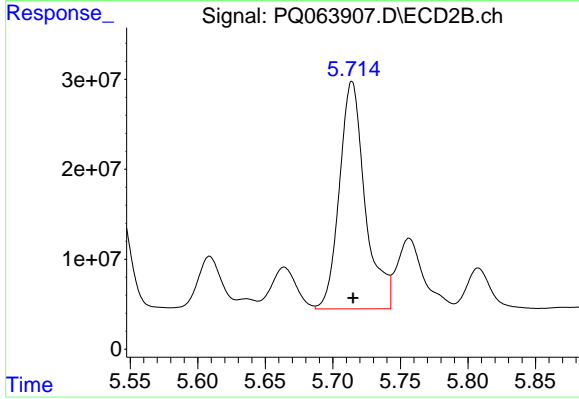
#29 AR-1254-4

R.T.: 5.306 min
 Delta R.T.: -0.002 min
 Response: 83144155
 Conc: 473.94 ng/ml



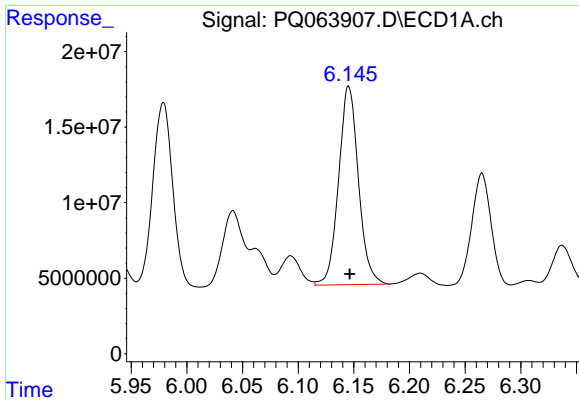
#30 AR-1254-5

R.T.: 6.680 min
 Delta R.T.: -0.002 min
 Response: 297344593
 Conc: 1490.75 ng/ml



#30 AR-1254-5

R.T.: 5.714 min
 Delta R.T.: 0.000 min
 Response: 334995510
 Conc: 1314.01 ng/ml



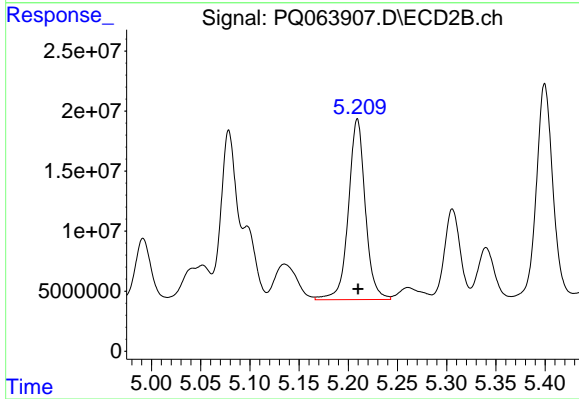
#31 AR-1260-1

R.T.: 6.145 min
 Delta R.T.: 0.000 min
 Response: 162904019
 Conc: 795.71 ng/ml

Instrument :
 ECD_Q
 ClientSampleId :
 TP-6MSD

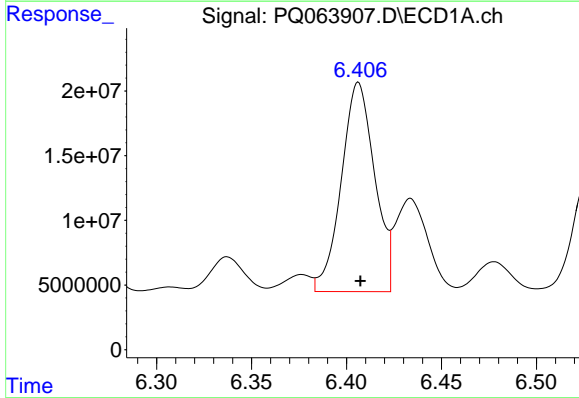
Manual Integrations
 APPROVED

Reviewed By :Yogesh Patel 11/10/2023
 Supervised By :Ankita Jodhani 11/10/2023



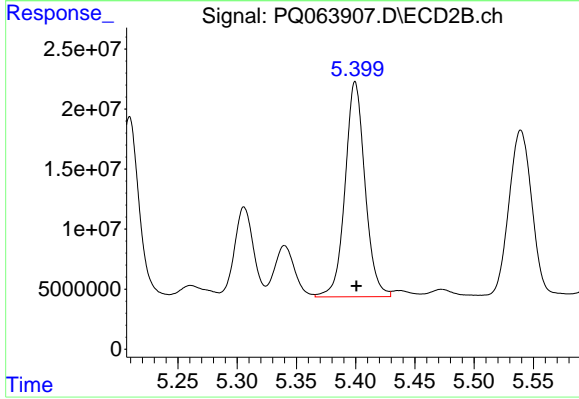
#31 AR-1260-1

R.T.: 5.209 min
 Delta R.T.: 0.000 min
 Response: 179843979
 Conc: 909.25 ng/ml



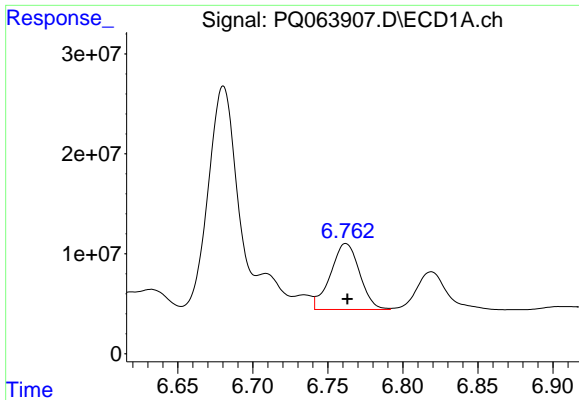
#32 AR-1260-2

R.T.: 6.406 min
 Delta R.T.: 0.000 min
 Response: 197776166
 Conc: 818.73 ng/ml



#32 AR-1260-2

R.T.: 5.400 min
 Delta R.T.: -0.001 min
 Response: 210011900
 Conc: 879.69 ng/ml



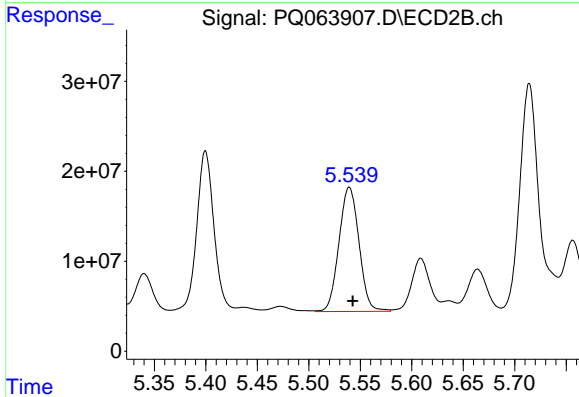
#33 AR-1260-3

R.T.: 6.762 min
 Delta R.T.: 0.000 min
 Response: 89153311
 Conc: 553.91 ng/ml

Instrument :
 ECD_Q
 ClientSampleId :
 TP-6MSD

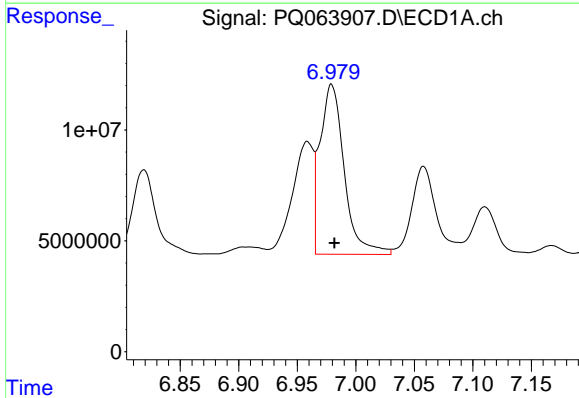
Manual Integrations
 APPROVED

Reviewed By :Yogesh Patel 11/10/2023
 Supervised By :Ankita Jodhani 11/10/2023



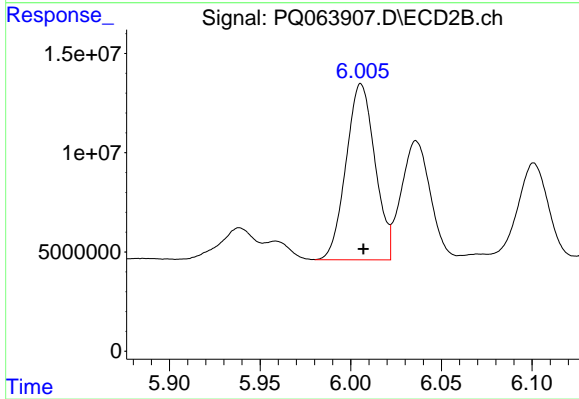
#33 AR-1260-3

R.T.: 5.539 min
 Delta R.T.: -0.003 min
 Response: 187403689
 Conc: 829.67 ng/ml



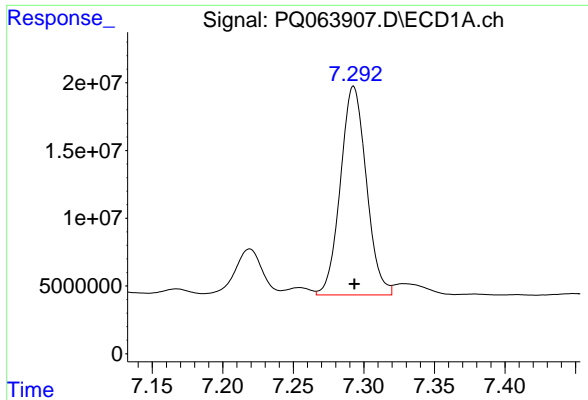
#34 AR-1260-4

R.T.: 6.979 min
 Delta R.T.: -0.002 min
 Response: 110483179
 Conc: 598.85 ng/ml



#34 AR-1260-4

R.T.: 6.006 min
 Delta R.T.: -0.001 min
 Response: 98404460
 Conc: 571.91 ng/ml



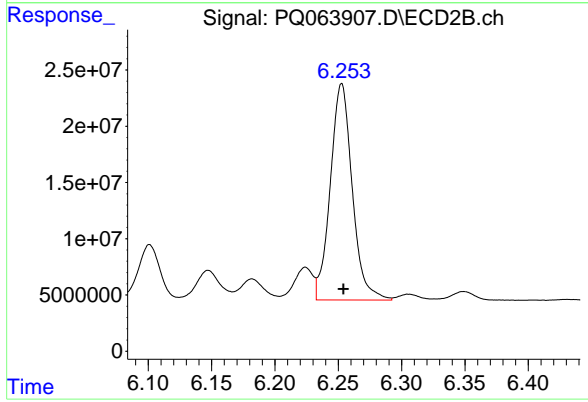
#35 AR-1260-5

R.T.: 7.293 min
 Delta R.T.: 0.000 min
 Response: 196570020
 Conc: 553.11 ng/ml

Instrument :
 ECD_Q
 ClientSampleId :
 TP-6MSD

Manual Integrations
 APPROVED

Reviewed By :Yogesh Patel 11/10/2023
 Supervised By :Ankita Jodhani 11/10/2023



#35 AR-1260-5

R.T.: 6.253 min
 Delta R.T.: -0.001 min
 Response: 232272834
 Conc: 582.04 ng/ml