

Data Path : Z:\pestpcbsrv\HPCHEM1\ECD\_Q\Data\PQ110923\  
 Data File : PQ063909.D  
 Signal(s) : Signal #1: ECD1A.ch Signal #2: ECD2B.ch  
 Acq On : 10 Nov 2023 08:41  
 Operator : YP\AJ  
 Sample : AR1254CCC500  
 Misc :  
 ALS Vial : 144 Sample Multiplier: 1

Instrument :  
 ECD\_Q  
 ClientSampleId :  
 AR1254CCC500

Integration File signal 1: autoint1.e  
 Integration File signal 2: autoint2.e  
 Quant Time: Nov 10 08:54:18 2023  
 Quant Method : Z:\pestpcbsrv\HPCHEM1\ECD\_Q\Method\PQ110823.M  
 Quant Title : GC EXTRACTABLES  
 QLast Update : Wed Nov 08 18:43:53 2023  
 Response via : Initial Calibration  
 Integrator: ChemStation

Volume Inj. : 2 µl  
 Signal #1 Phase : ZB-MR1 Signal #2 Phase: ZB-MR2  
 Signal #1 Info : 30Mx0.32mmx 0.50µ Signal #2 Info : 30M x 0.32mm x 0.25µm

Compound	RT#1	RT#2	Resp#1	Resp#2	ng/ml	ng/ml
-----						
System Monitoring Compounds						
1) SA Tetrachlo...	3.460	2.777	223.6E6	213.2E6	52.453	57.979
2) SA Decachlor...	8.692	7.575	160.0E6	250.6E6	49.570	53.484
Target Compounds						
26) L6 AR-1254-1	5.404	4.548	83082214	101.0E6	529.355	519.546
27) L6 AR-1254-2	5.623	4.695	126.3E6	90123566	532.437	517.344
28) L6 AR-1254-3	5.979	5.079	128.4E6	140.0E6	518.046	522.993
29) L6 AR-1254-4	6.266	5.306	94372199	91288295	520.753	520.369
30) L6 AR-1254-5	6.681	5.714	108.3E6	133.5E6	542.823	523.497
-----						

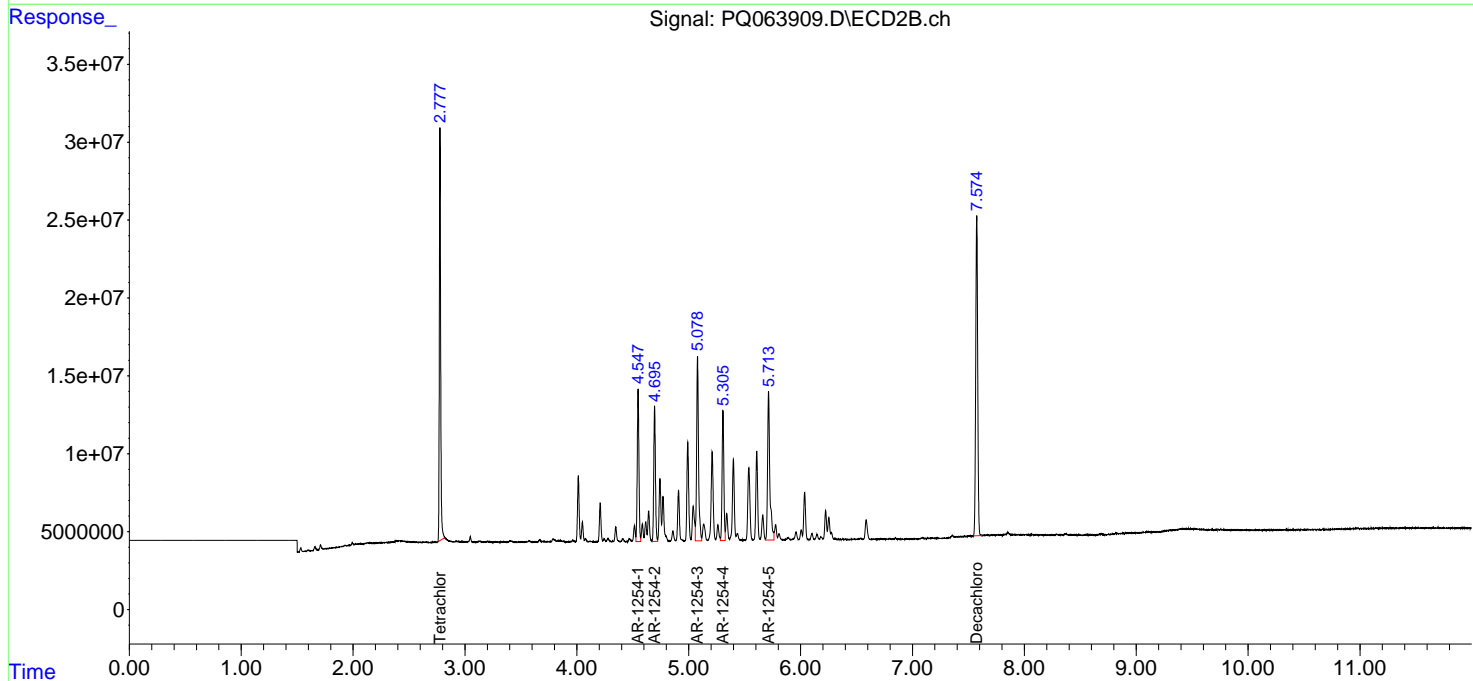
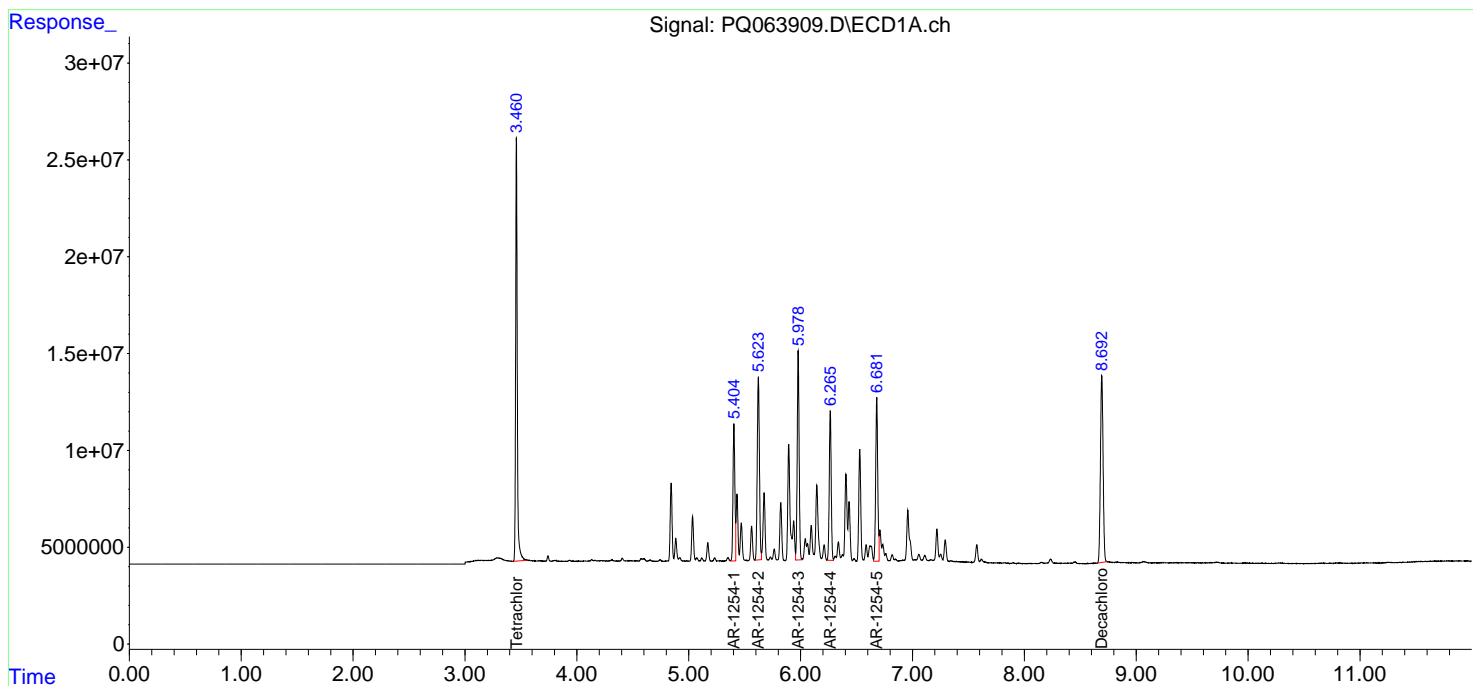
(f)=RT Delta > 1/2 Window (#)=Amounts differ by > 25% (m)=manual int.

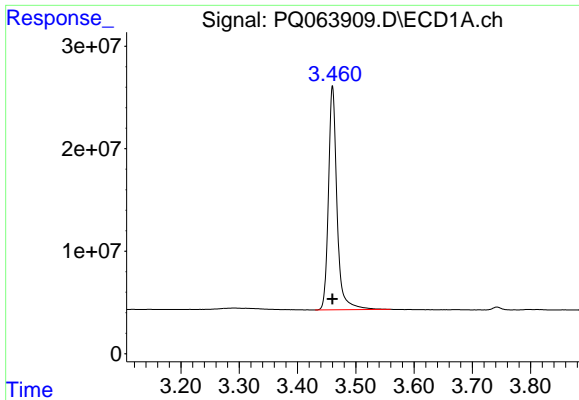
Data Path : Z:\pestpcbsrv\HPCHEM1\ECD\_Q\Data\PQ110923\  
 Data File : PQ063909.D  
 Signal(s) : Signal #1: ECD1A.ch Signal #2: ECD2B.ch  
 Acq On : 10 Nov 2023 08:41  
 Operator : YP\AJ  
 Sample : AR1254CCC500  
 Misc :  
 ALS Vial : 144 Sample Multiplier: 1

Instrument :  
 ECD\_Q  
 ClientSampleId :  
 AR1254CCC500

Integration File signal 1: autoint1.e  
 Integration File signal 2: autoint2.e  
 Quant Time: Nov 10 08:54:18 2023  
 Quant Method : Z:\pestpcbsrv\HPCHEM1\ECD\_Q\Method\PQ110823.M  
 Quant Title : GC EXTRACTABLES  
 QLast Update : Wed Nov 08 18:43:53 2023  
 Response via : Initial Calibration  
 Integrator: ChemStation

Volume Inj. : 2 µl  
 Signal #1 Phase : ZB-MR1 Signal #2 Phase: ZB-MR2  
 Signal #1 Info : 30Mx0.32mmx 0.50µ Signal #2 Info : 30M x 0.32mm x 0.25µm

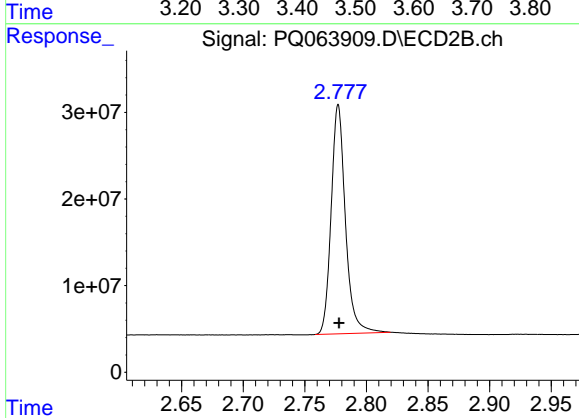




#1 Tetrachloro-m-xylene

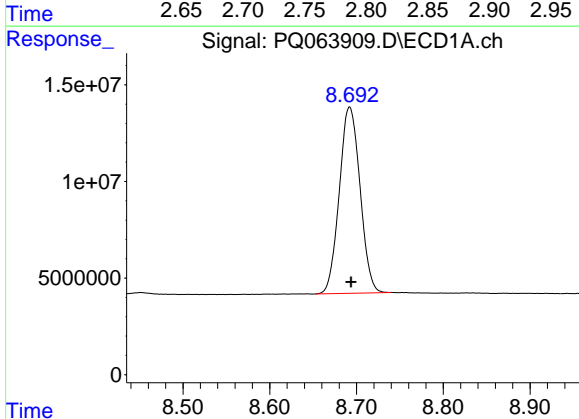
R.T.: 3.460 min  
 Delta R.T.: 0.000 min  
 Response: 223578129  
 Conc: 52.45 ng/ml

Instrument :  
 ECD\_Q  
 ClientSampleId :  
 AR1254CCC500



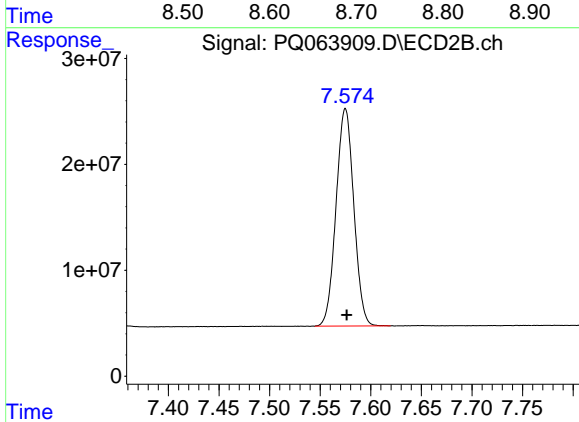
#1 Tetrachloro-m-xylene

R.T.: 2.777 min  
 Delta R.T.: 0.000 min  
 Response: 213228747  
 Conc: 57.98 ng/ml



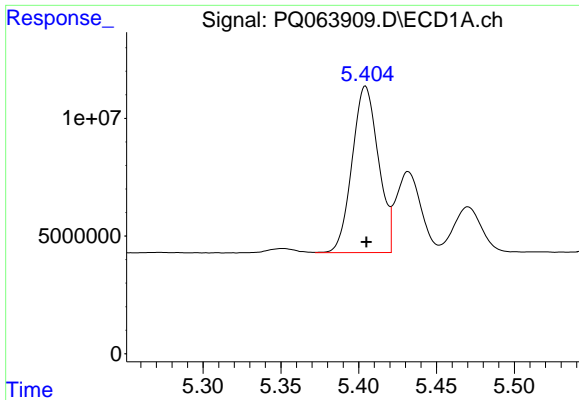
#2 Decachlorobiphenyl

R.T.: 8.692 min  
 Delta R.T.: -0.002 min  
 Response: 160043529  
 Conc: 49.57 ng/ml



#2 Decachlorobiphenyl

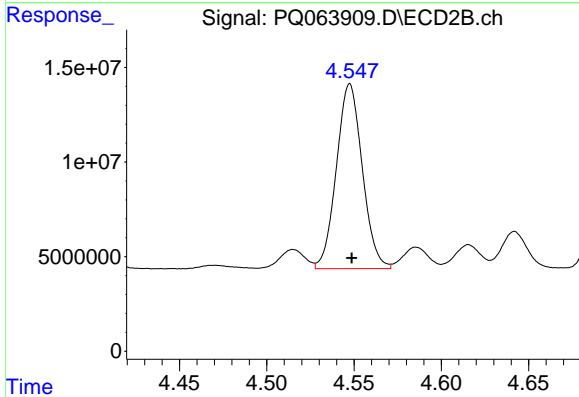
R.T.: 7.575 min  
 Delta R.T.: -0.001 min  
 Response: 250593389  
 Conc: 53.48 ng/ml



#26 AR-1254-1

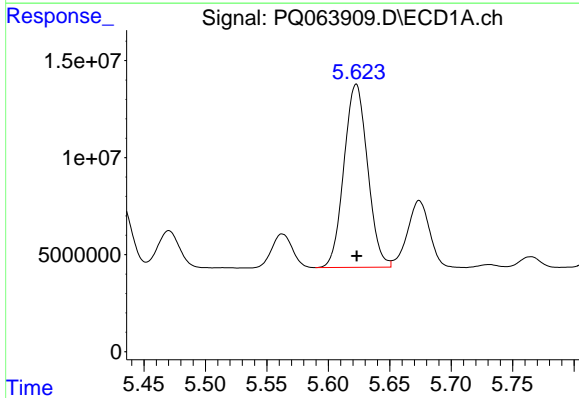
R.T.: 5.404 min  
 Delta R.T.: 0.000 min  
 Response: 83082214  
 Conc: 529.36 ng/ml

Instrument :  
 ECD\_Q  
 ClientSampleId :  
 AR1254CCC500



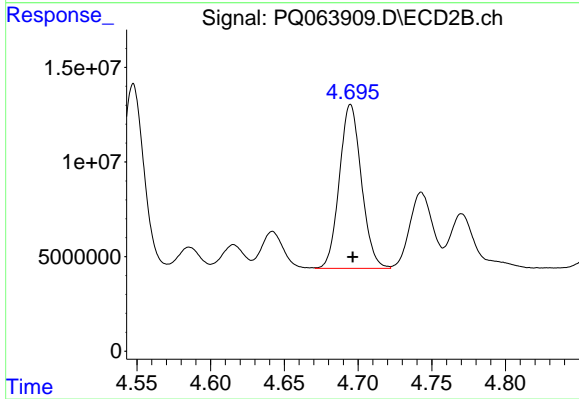
#26 AR-1254-1

R.T.: 4.548 min  
 Delta R.T.: -0.001 min  
 Response: 100980813  
 Conc: 519.55 ng/ml



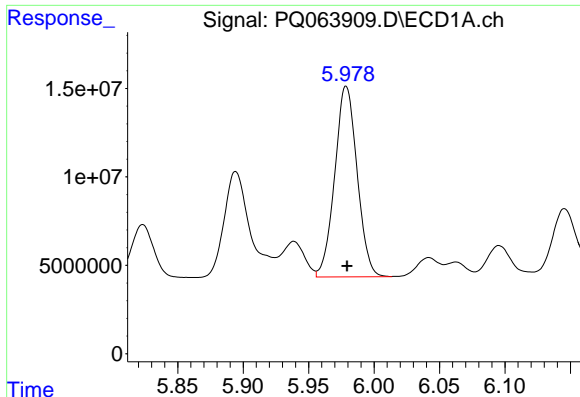
#27 AR-1254-2

R.T.: 5.623 min  
 Delta R.T.: 0.000 min  
 Response: 126270322  
 Conc: 532.44 ng/ml



#27 AR-1254-2

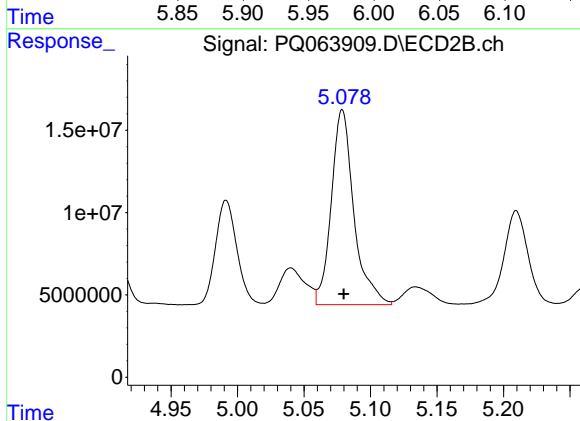
R.T.: 4.695 min  
 Delta R.T.: -0.001 min  
 Response: 90123566  
 Conc: 517.34 ng/ml



#28 AR-1254-3

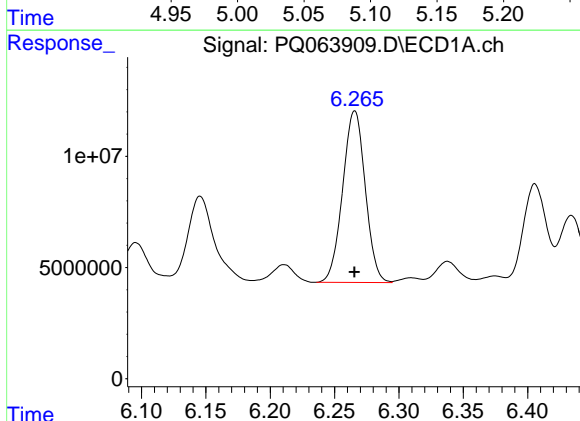
R.T.: 5.979 min  
 Delta R.T.: 0.000 min  
 Response: 128445097  
 Conc: 518.05 ng/ml

Instrument :  
 ECD\_Q  
 ClientSampleId :  
 AR1254CCC500



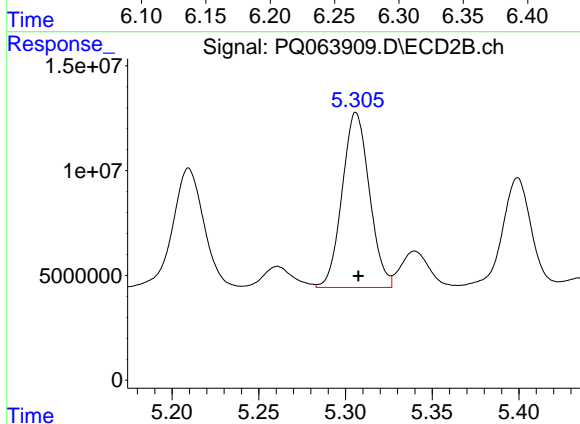
#28 AR-1254-3

R.T.: 5.079 min  
 Delta R.T.: 0.000 min  
 Response: 139989711  
 Conc: 522.99 ng/ml



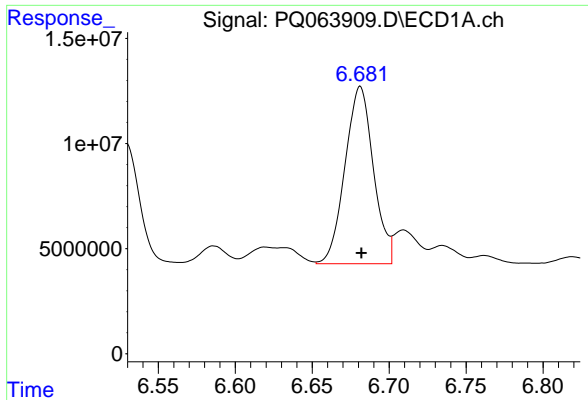
#29 AR-1254-4

R.T.: 6.266 min  
 Delta R.T.: 0.000 min  
 Response: 94372199  
 Conc: 520.75 ng/ml



#29 AR-1254-4

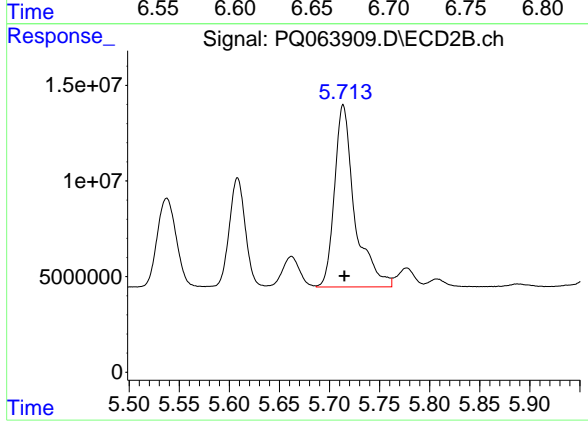
R.T.: 5.306 min  
 Delta R.T.: -0.001 min  
 Response: 91288295  
 Conc: 520.37 ng/ml



#30 AR-1254-5

R.T.: 6.681 min  
 Delta R.T.: 0.000 min  
 Response: 108271407  
 Conc: 542.82 ng/ml

Instrument :  
 ECD\_Q  
 ClientSampleId :  
 AR1254CCC500



#30 AR-1254-5

R.T.: 5.714 min  
 Delta R.T.: -0.001 min  
 Response: 133460723  
 Conc: 523.50 ng/ml