

Data Path : Z:\pestpcbsrv\HPCHEM1\ECD_Q\Data\PQ111023\
 Data File : PQ063914.D
 Signal(s) : Signal #1: ECD1A.ch Signal #2: ECD2B.ch
 Acq On : 10 Nov 2023 09:55
 Operator : YP\AJ
 Sample : AR1254CCC500
 Misc :
 ALS Vial : 144 Sample Multiplier: 1

Instrument :
 ECD_Q
 ClientSampleId :

Integration File signal 1: autoint1.e
 Integration File signal 2: autoint2.e
 Quant Time: Nov 10 22:27:44 2023
 Quant Method : Z:\pestpcbsrv\HPCHEM1\ECD_Q\Method\PQ110823.M
 Quant Title : GC EXTRACTABLES
 QLast Update : Wed Nov 08 18:43:53 2023
 Response via : Initial Calibration
 Integrator: ChemStation

Volume Inj. : 2 µl
 Signal #1 Phase : ZB-MR1 Signal #2 Phase: ZB-MR2
 Signal #1 Info : 30Mx0.32mmx 0.50µ Signal #2 Info : 30M x 0.32mm x 0.25µm

Compound	RT#1	RT#2	Resp#1	Resp#2	ng/ml	ng/ml

System Monitoring Compounds						
1) SA Tetrachlo...	3.460	2.777	224.2E6	211.0E6	52.588	57.379
2) SA Decachlor...	8.695	7.575	160.2E6	252.1E6	49.615	53.813
Target Compounds						
3) L1 AR-1016-1	4.575	3.786	1653145	1523223	11.996	12.091
4) L1 AR-1016-2	4.596	3.802	2031844	1316052	9.620	7.264
5) L1 AR-1016-3	4.653	3.965	957579	908907	7.190	9.327 #
6) L1 AR-1016-4	4.744	4.014	1039893	42187220	9.891	500.045 #
7) L1 AR-1016-5	5.036	4.209	26605916	24608877	251.132	246.062
8) L2 AR-1221-1	3.673	2.972	371733	117761	6.870	2.285 #
9) L2 AR-1221-2	3.742	3.048	2923859	2840979	80.040	81.480
10) L2 AR-1221-3	3.814	3.127	429369	494476	3.616	4.483
11) L3 AR-1232-1	3.814	3.127	429369	494476	4.591	5.711
12) L3 AR-1232-2	4.315	3.802	752201	1316052	14.323	16.545
13) L3 AR-1232-3	4.596	3.965	2031844	908907	22.590	21.955
14) L3 AR-1232-4	4.744	4.050	1039893	12802148	23.782	352.515 #
15) L3 AR-1232-5	4.843	4.209	46290554	24608877	1384.276	585.683 #
16) L4 AR-1242-1	4.575	3.786	1653145	1523223	14.671	14.808
17) L4 AR-1242-2	4.596	3.802	2031844	1316052	12.016	8.918 #
18) L4 AR-1242-3	4.653	3.965	957579	908907	9.073	11.425 #
19) L4 AR-1242-4	4.744	4.050	1039893	12802148	12.256	168.703 #
20) L4 AR-1242-5	5.471	4.548	23962989	100.2E6	271.007	996.500 #
21) L5 AR-1248-1	4.575	3.786	1653145	1523223	19.856	19.535
22) L5 AR-1248-2	4.843	4.014	46290554	42187220	381.396	355.884
23) L5 AR-1248-3	5.036	4.050	26605916	12802148	183.751	113.632 #
24) L5 AR-1248-4	5.432	4.209	38804180	24608877	250.391	178.768 #
25) L5 AR-1248-5	5.471	4.586	23962989	11656962	156.716	86.819 #
26) L6 AR-1254-1	5.405	4.548	83234512	100.2E6	530.326	515.745
27) L6 AR-1254-2	5.624	4.696	126.6E6	89647480	533.899	514.611
28) L6 AR-1254-3	5.980	5.080	130.5E6	138.7E6	526.192	518.003
29) L6 AR-1254-4	6.267	5.307	95050497	90444518	524.496	515.559
30) L6 AR-1254-5	6.682	5.714	107.0E6	133.0E6	536.321	521.881
31) L7 AR-1260-1	6.146	5.210	54333162	71246174	265.393	360.203 #
32) L7 AR-1260-2	6.407	5.399	57359961	60465450	237.453	253.276
33) L7 AR-1260-3	6.763	5.538	4249713	60947789	26.404	269.828 #
34) L7 AR-1260-4	6.960	6.006	43658540	6636850	236.643	38.573 #
35) L7 AR-1260-5	7.295	6.254	15634308	16741506	43.992	41.951
36) L8 AR-1262-1	6.763	5.807	4249713	4870630	16.261	44.489 #
37) L8 AR-1262-2	7.295	6.006	15634308	6636850	36.757	26.868 #
38) L8 AR-1262-3	7.575	6.535	12039590	942337	42.019	4.651 #
39) L8 AR-1262-4	7.648	6.588	640178	16655276	2.790	44.696 #
40) L8 AR-1262-5	8.156	7.089	701784	489747	4.927	2.709 #
41) L9 AR-1268-1	7.575	6.535	12039590	942337	24.347	1.642 #

Data Path : Z:\pestpcbsrv\HPCHEM1\ECD_Q\Data\PQ111023\
 Data File : PQ063914.D
 Signal(s) : Signal #1: ECD1A.ch Signal #2: ECD2B.ch
 Acq On : 10 Nov 2023 09:55
 Operator : YP\AJ
 Sample : AR1254CCC500
 Misc :
 ALS Vial : 144 Sample Multiplier: 1

Instrument :
 ECD_Q
 ClientSampleId :

Integration File signal 1: autoint1.e
 Integration File signal 2: autoint2.e
 Quant Time: Nov 10 22:27:44 2023
 Quant Method : Z:\pestpcbsrv\HPCHEM1\ECD_Q\Method\PQ110823.M
 Quant Title : GC EXTRACTABLES
 QLast Update : Wed Nov 08 18:43:53 2023
 Response via : Initial Calibration
 Integrator: ChemStation

Volume Inj. : 2 µl
 Signal #1 Phase : ZB-MR1 Signal #2 Phase: ZB-MR2
 Signal #1 Info : 30Mx0.32mmx 0.50µ Signal #2 Info : 30M x 0.32mm x 0.25µm

	Compound	RT#1	RT#2	Resp#1	Resp#2	ng/ml	ng/ml
42)	L9 AR-1268-2	7.648	6.588	640178	16655276	1.430	32.084 #
43)	L9 AR-1268-3	7.828	6.798	528952	752624	1.356	1.623
44)	L9 AR-1268-4	8.156	7.089	701784	489747	4.489	2.507 #
45)	L9 AR-1268-5	8.457	7.358	1236978	1488839	1.097	0.973

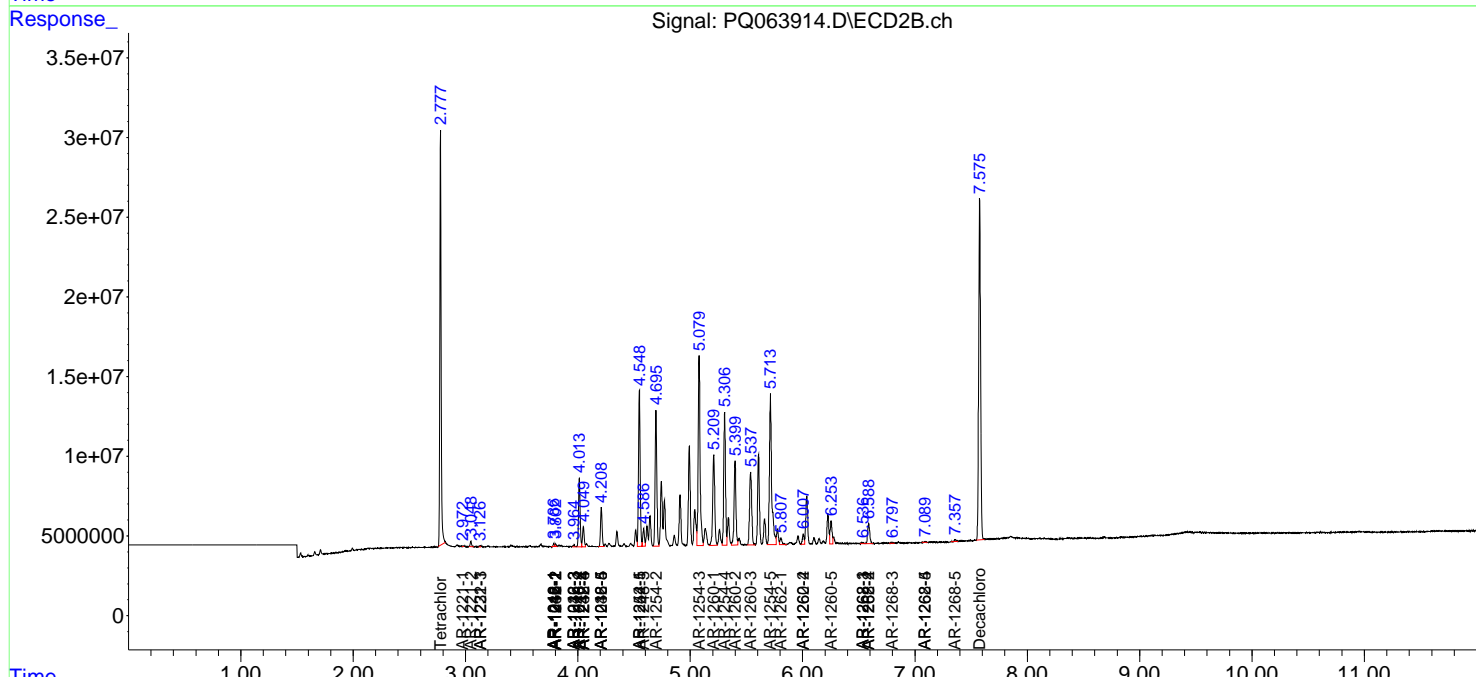
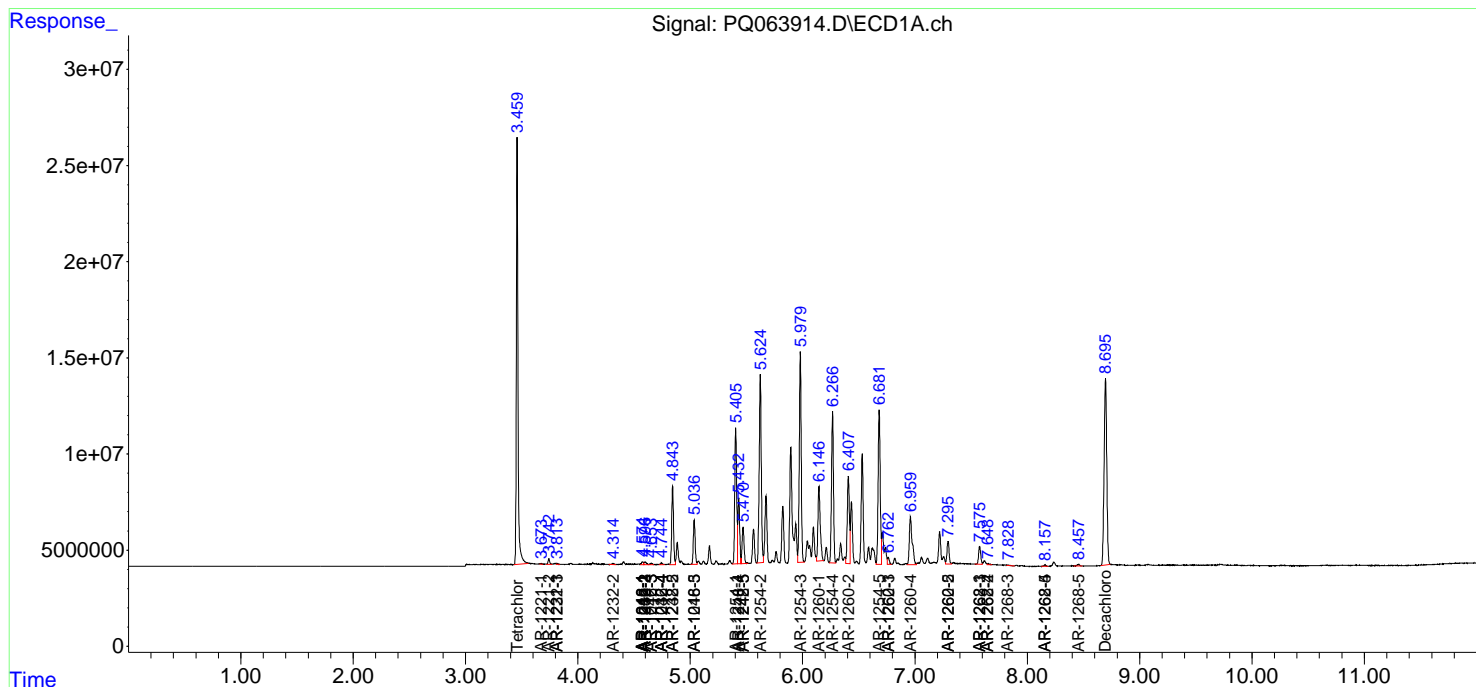
(f)=RT Delta > 1/2 Window (#)=Amounts differ by > 25% (m)=manual int.

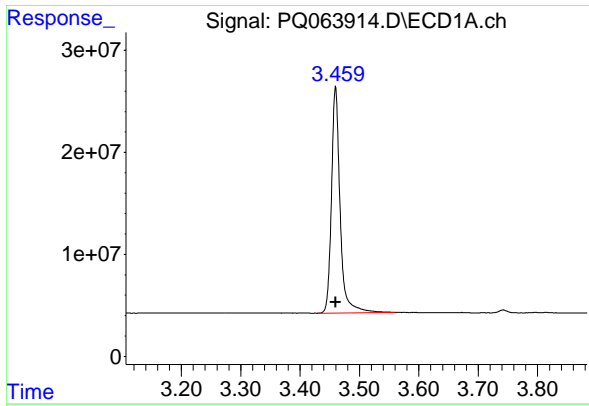
Data Path : Z:\pestpcbsrv\HPCHEM1\ECD_Q\Data\PQ111023\
 Data File : PQ063914.D
 Signal(s) : Signal #1: ECD1A.ch Signal #2: ECD2B.ch
 Acq On : 10 Nov 2023 09:55
 Operator : YP\AJ
 Sample : AR1254CCC500
 Misc :
 ALS Vial : 144 Sample Multiplier: 1

Instrument :
 ECD_Q
 ClientSampleId :

Integration File signal 1: autoint1.e
 Integration File signal 2: autoint2.e
 Quant Time: Nov 10 22:27:44 2023
 Quant Method : Z:\pestpcbsrv\HPCHEM1\ECD_Q\Method\PQ110823.M
 Quant Title : GC EXTRACTABLES
 QLast Update : Wed Nov 08 18:43:53 2023
 Response via : Initial Calibration
 Integrator: ChemStation

Volume Inj. : 2 µl
 Signal #1 Phase : ZB-MR1 Signal #2 Phase: ZB-MR2
 Signal #1 Info : 30Mx0.32mmx 0.50µm Signal #2 Info : 30M x 0.32mm x 0.25µm

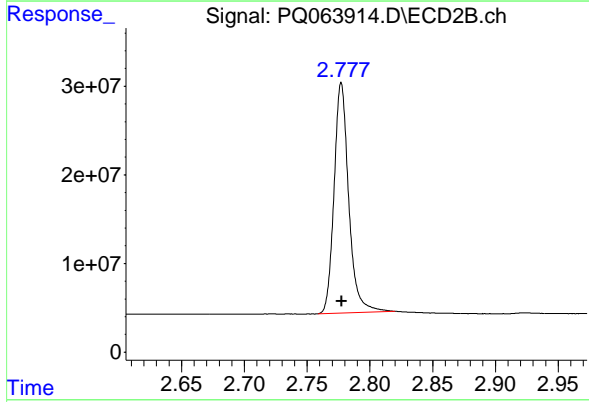




#1 Tetrachloro-m-xylene

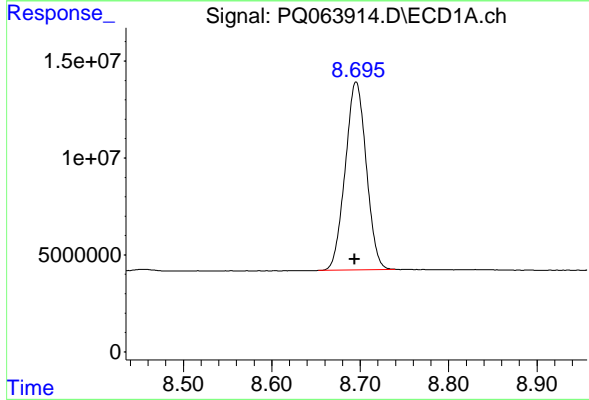
R.T.: 3.460 min
 Delta R.T.: 0.000 min
 Response: 224156359
 Conc: 52.59 ng/ml

Instrument :
 ECD_Q
 ClientSampleId :



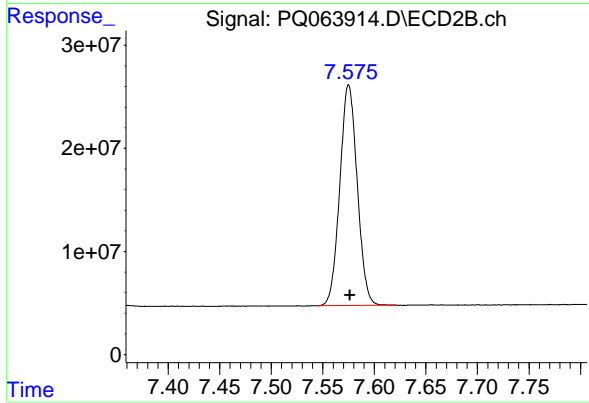
#1 Tetrachloro-m-xylene

R.T.: 2.777 min
 Delta R.T.: 0.000 min
 Response: 211021045
 Conc: 57.38 ng/ml



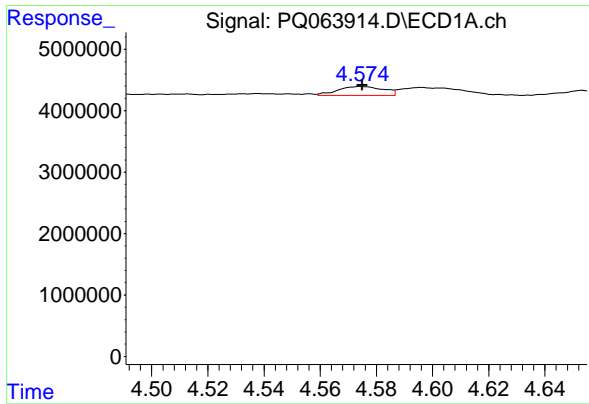
#2 Decachlorobiphenyl

R.T.: 8.695 min
 Delta R.T.: 0.002 min
 Response: 160188853
 Conc: 49.61 ng/ml



#2 Decachlorobiphenyl

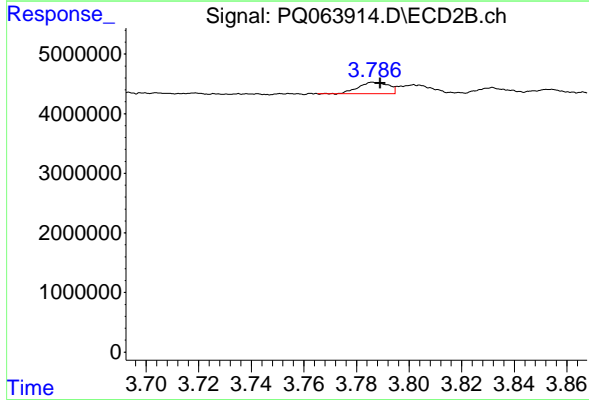
R.T.: 7.575 min
 Delta R.T.: -0.001 min
 Response: 252137302
 Conc: 53.81 ng/ml



#3 AR-1016-1

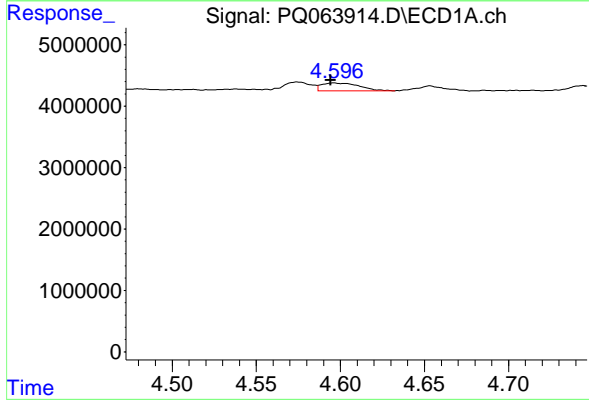
R.T.: 4.575 min
Delta R.T.: 0.000 min
Response: 1653145
Conc: 12.00 ng/ml

Instrument : ECD_Q
ClientSampleId :



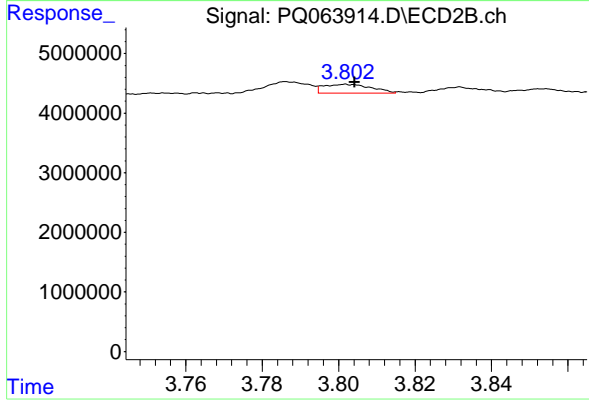
#3 AR-1016-1

R.T.: 3.786 min
Delta R.T.: -0.003 min
Response: 1523223
Conc: 12.09 ng/ml



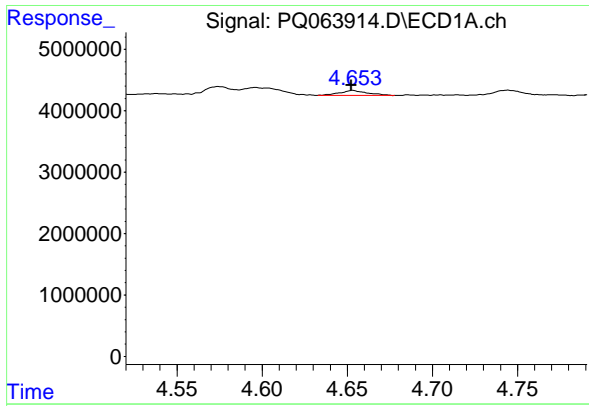
#4 AR-1016-2

R.T.: 4.596 min
Delta R.T.: 0.002 min
Response: 2031844
Conc: 9.62 ng/ml



#4 AR-1016-2

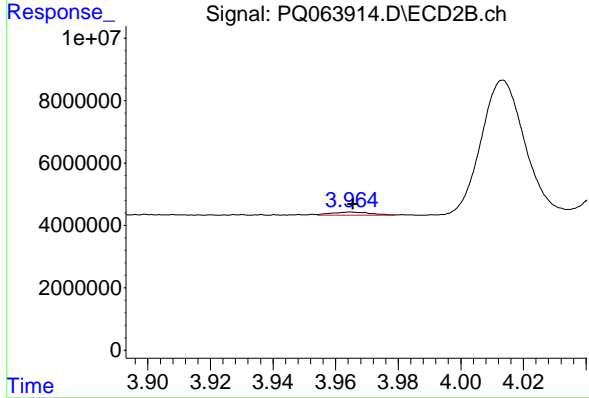
R.T.: 3.802 min
Delta R.T.: -0.002 min
Response: 1316052
Conc: 7.26 ng/ml



#5 AR-1016-3

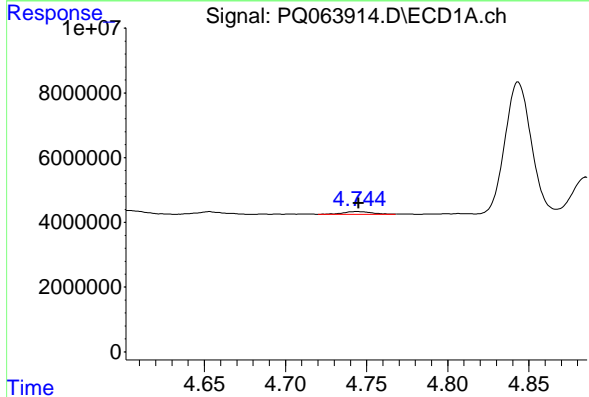
R.T.: 4.653 min
 Delta R.T.: 0.000 min
 Response: 957579
 Conc: 7.19 ng/ml

Instrument :
 ECD_Q
 ClientSampleId :



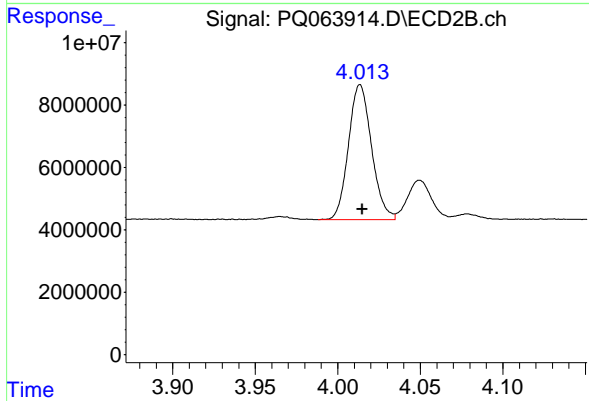
#5 AR-1016-3

R.T.: 3.965 min
 Delta R.T.: 0.000 min
 Response: 908907
 Conc: 9.33 ng/ml



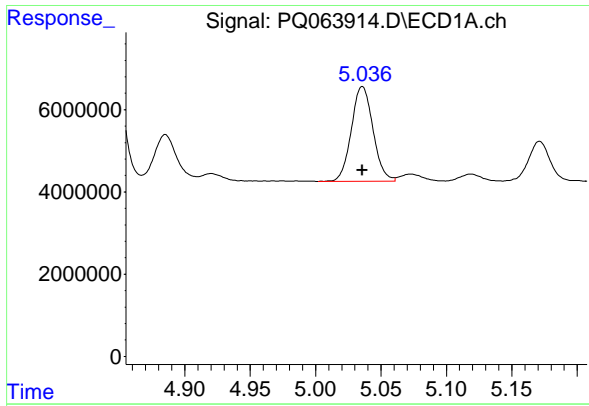
#6 AR-1016-4

R.T.: 4.744 min
 Delta R.T.: -0.001 min
 Response: 1039893
 Conc: 9.89 ng/ml



#6 AR-1016-4

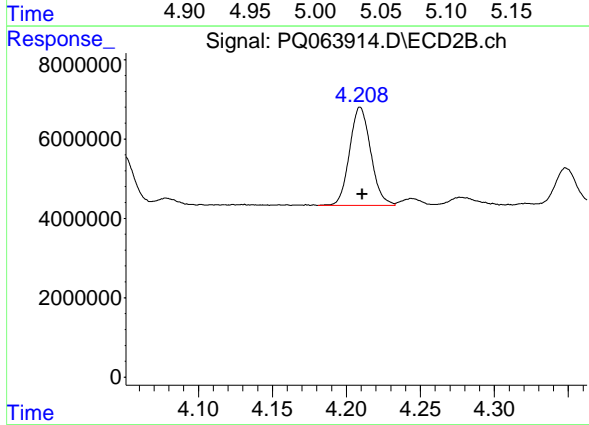
R.T.: 4.014 min
 Delta R.T.: -0.001 min
 Response: 42187220
 Conc: 500.04 ng/ml



#7 AR-1016-5

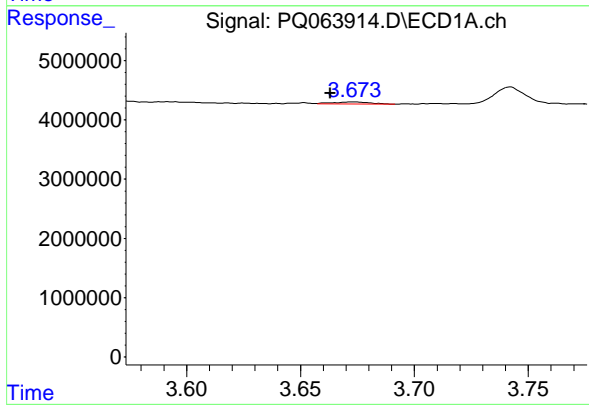
R.T.: 5.036 min
 Delta R.T.: 0.000 min
 Response: 26605916
 Conc: 251.13 ng/ml

Instrument :
 ECD_Q
 ClientSampleId :



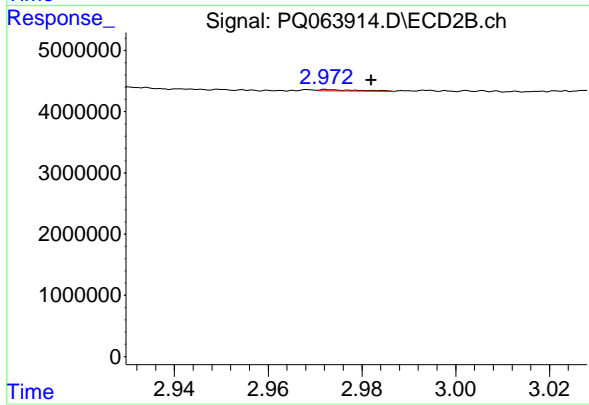
#7 AR-1016-5

R.T.: 4.209 min
 Delta R.T.: -0.001 min
 Response: 24608877
 Conc: 246.06 ng/ml



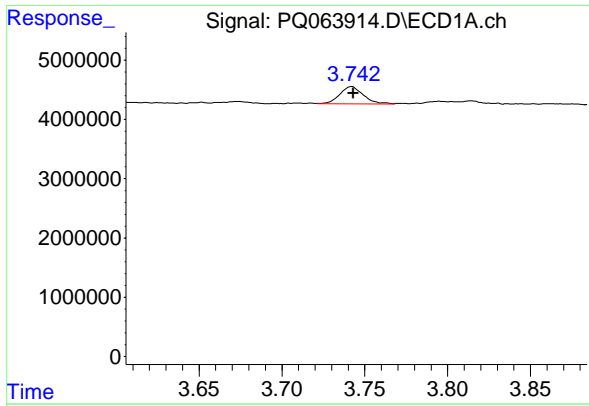
#8 AR-1221-1

R.T.: 3.673 min
 Delta R.T.: 0.010 min
 Response: 371733
 Conc: 6.87 ng/ml



#8 AR-1221-1

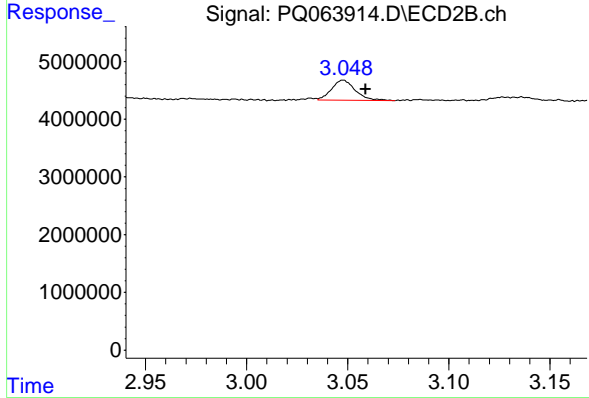
R.T.: 2.972 min
 Delta R.T.: -0.010 min
 Response: 117761
 Conc: 2.29 ng/ml



#9 AR-1221-2

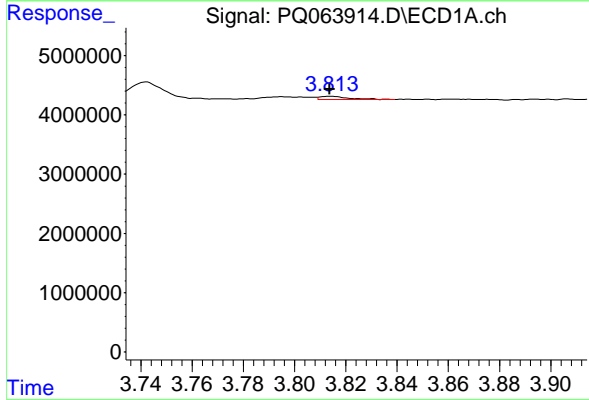
R.T.: 3.742 min
 Delta R.T.: -0.001 min
 Response: 2923859
 Conc: 80.04 ng/ml

Instrument : ECD_Q
 ClientSampleId :



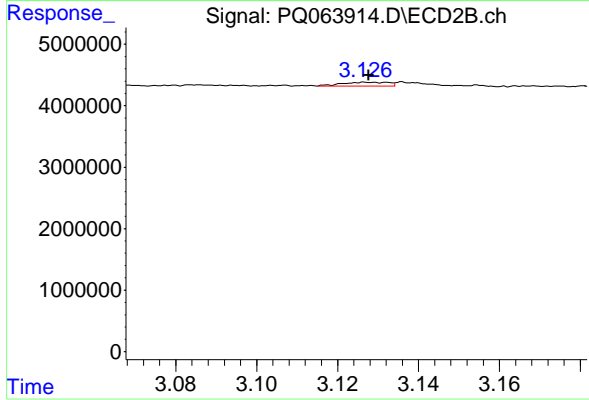
#9 AR-1221-2

R.T.: 3.048 min
 Delta R.T.: -0.011 min
 Response: 2840979
 Conc: 81.48 ng/ml



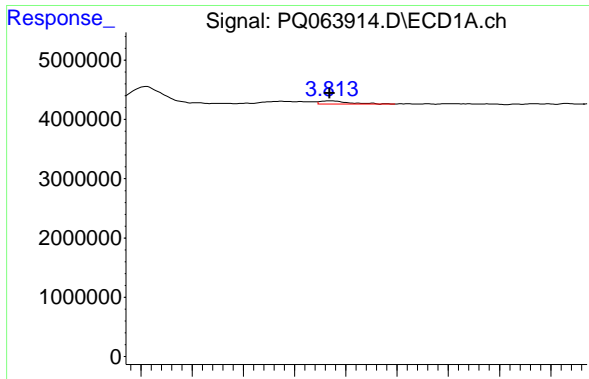
#10 AR-1221-3

R.T.: 3.814 min
 Delta R.T.: 0.000 min
 Response: 429369
 Conc: 3.62 ng/ml



#10 AR-1221-3

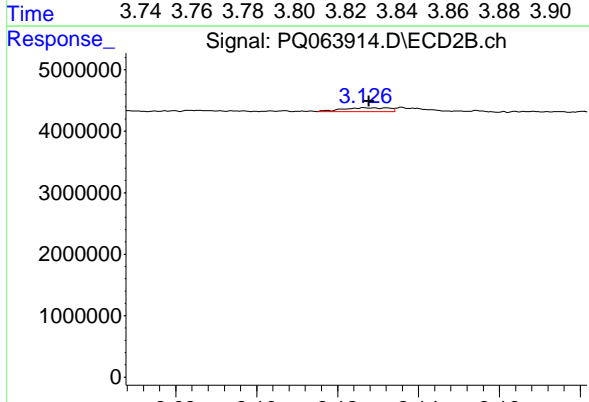
R.T.: 3.127 min
 Delta R.T.: 0.000 min
 Response: 494476
 Conc: 4.48 ng/ml



#11 AR-1232-1

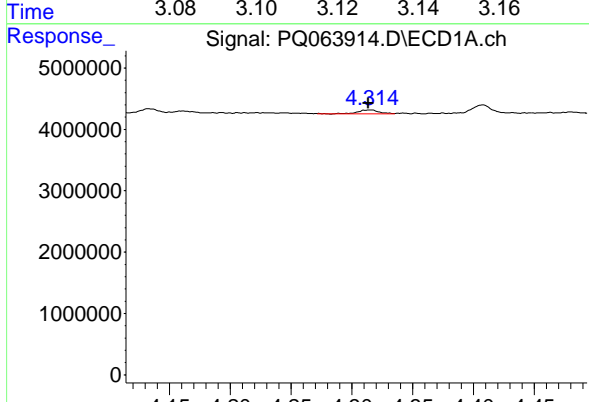
R.T.: 3.814 min
 Delta R.T.: 0.000 min
 Response: 429369
 Conc: 4.59 ng/ml

Instrument : ECD_Q
 ClientSampleId :



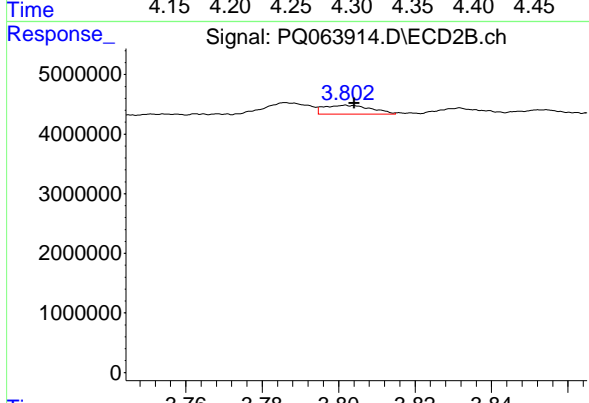
#11 AR-1232-1

R.T.: 3.127 min
 Delta R.T.: 0.000 min
 Response: 494476
 Conc: 5.71 ng/ml



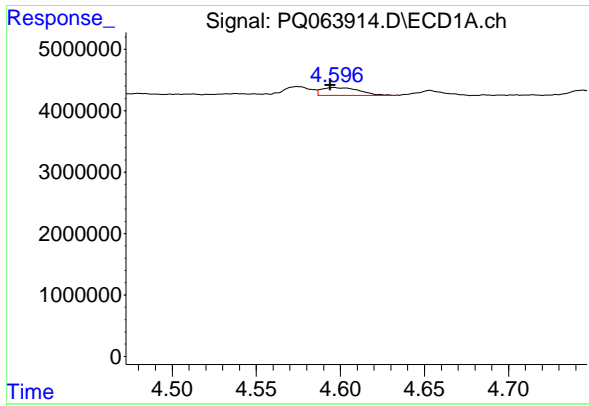
#12 AR-1232-2

R.T.: 4.315 min
 Delta R.T.: 0.001 min
 Response: 752201
 Conc: 14.32 ng/ml



#12 AR-1232-2

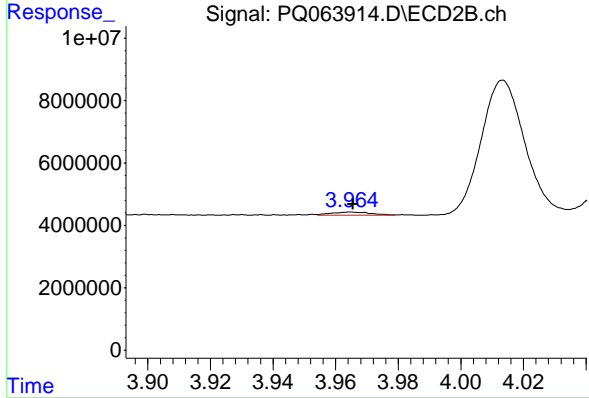
R.T.: 3.802 min
 Delta R.T.: -0.002 min
 Response: 1316052
 Conc: 16.55 ng/ml



#13 AR-1232-3

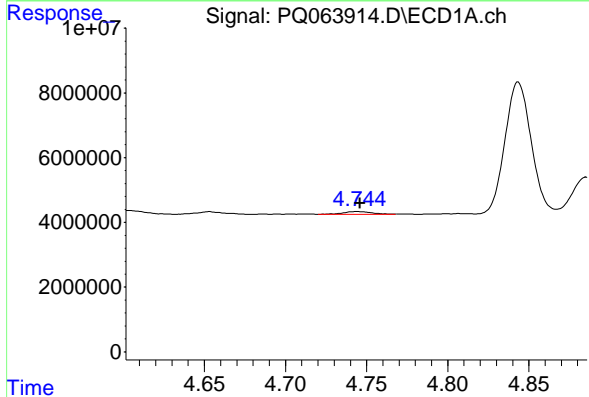
R.T.: 4.596 min
 Delta R.T.: 0.002 min
 Response: 2031844
 Conc: 22.59 ng/ml

Instrument :
 ECD_Q
 ClientSampleId :



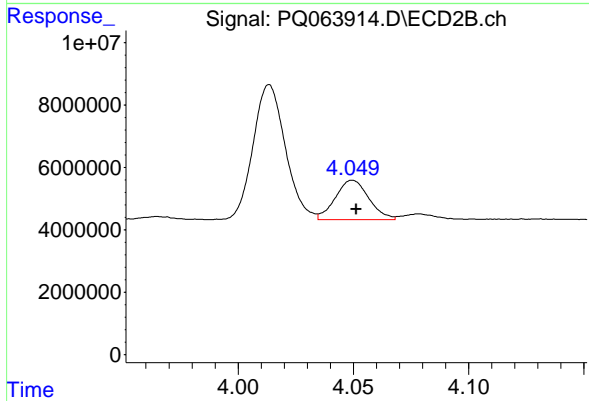
#13 AR-1232-3

R.T.: 3.965 min
 Delta R.T.: 0.000 min
 Response: 908907
 Conc: 21.95 ng/ml



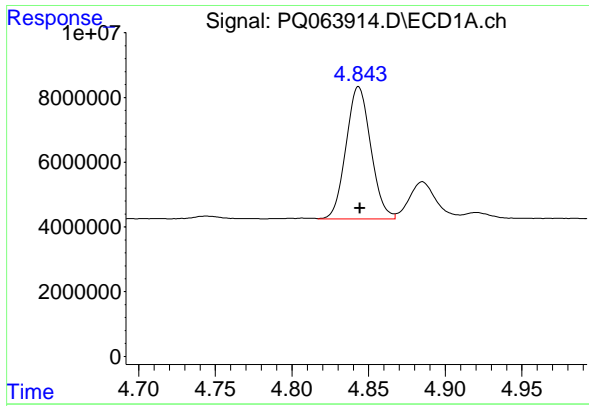
#14 AR-1232-4

R.T.: 4.744 min
 Delta R.T.: -0.002 min
 Response: 1039893
 Conc: 23.78 ng/ml



#14 AR-1232-4

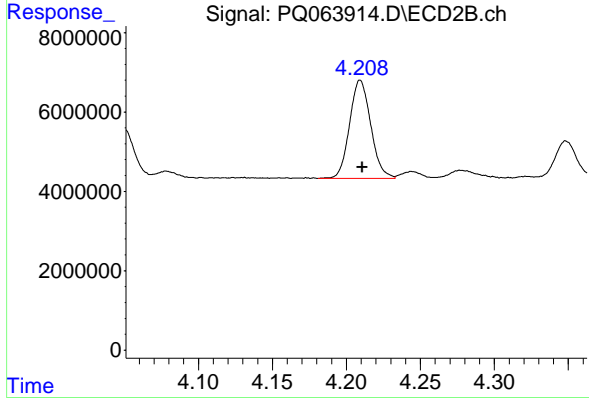
R.T.: 4.050 min
 Delta R.T.: -0.002 min
 Response: 12802148
 Conc: 352.51 ng/ml



#15 AR-1232-5

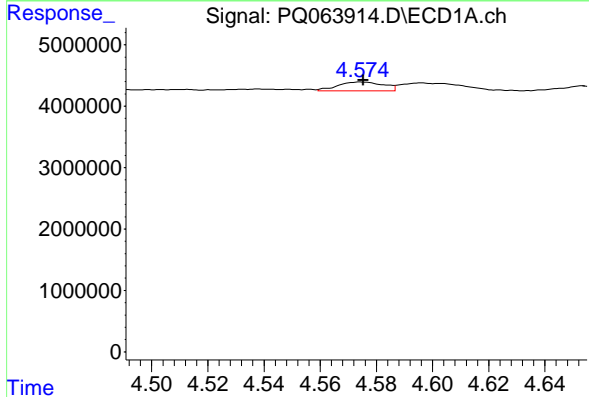
R.T.: 4.843 min
 Delta R.T.: 0.000 min
 Response: 46290554
 Conc: 1384.28 ng/ml

Instrument :
 ECD_Q
 ClientSampleId :



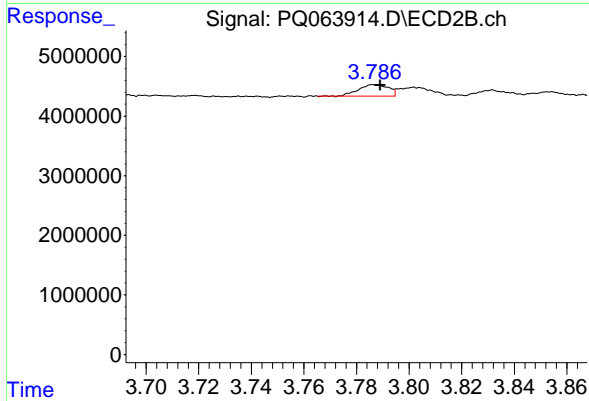
#15 AR-1232-5

R.T.: 4.209 min
 Delta R.T.: -0.001 min
 Response: 24608877
 Conc: 585.68 ng/ml



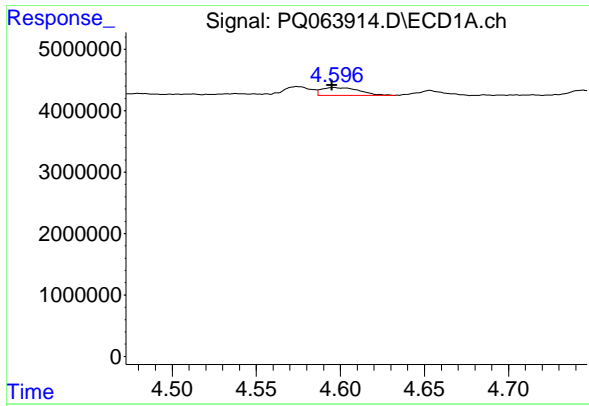
#16 AR-1242-1

R.T.: 4.575 min
 Delta R.T.: 0.000 min
 Response: 1653145
 Conc: 14.67 ng/ml



#16 AR-1242-1

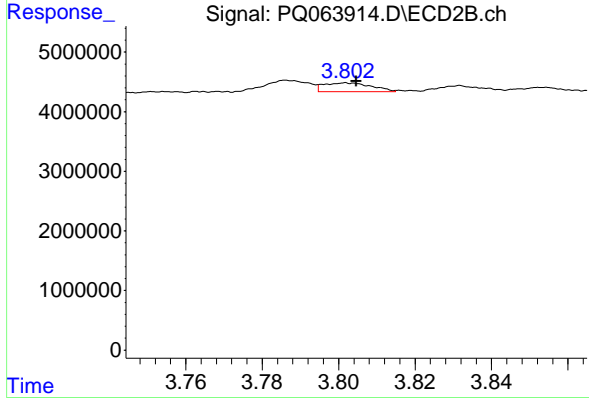
R.T.: 3.786 min
 Delta R.T.: -0.003 min
 Response: 1523223
 Conc: 14.81 ng/ml



#17 AR-1242-2

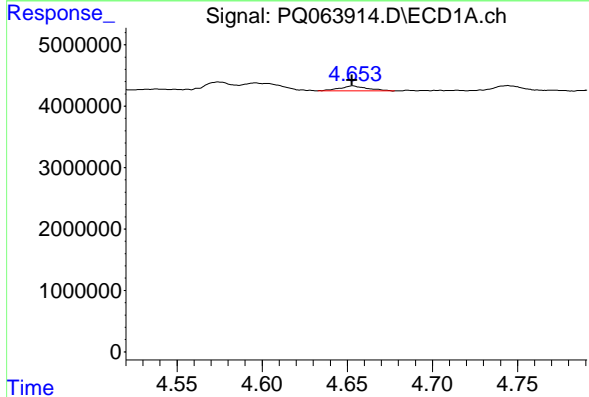
R.T.: 4.596 min
 Delta R.T.: 0.001 min
 Response: 2031844
 Conc: 12.02 ng/ml

Instrument :
 ECD_Q
 ClientSampleId :



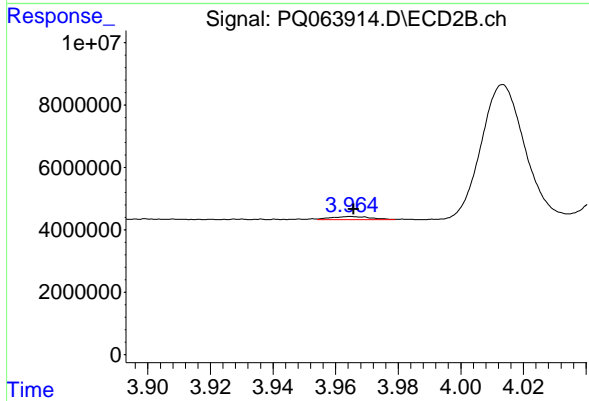
#17 AR-1242-2

R.T.: 3.802 min
 Delta R.T.: -0.003 min
 Response: 1316052
 Conc: 8.92 ng/ml



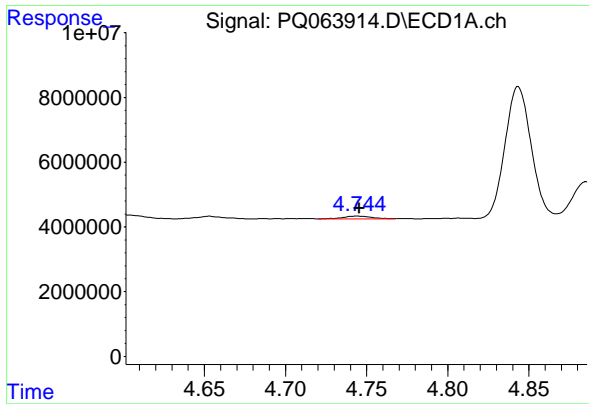
#18 AR-1242-3

R.T.: 4.653 min
 Delta R.T.: 0.000 min
 Response: 957579
 Conc: 9.07 ng/ml



#18 AR-1242-3

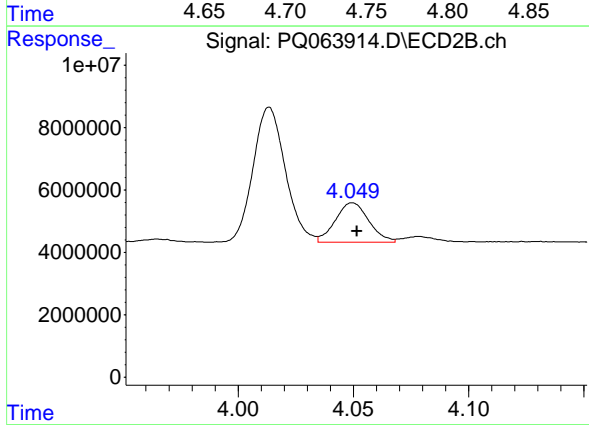
R.T.: 3.965 min
 Delta R.T.: 0.000 min
 Response: 908907
 Conc: 11.42 ng/ml



#19 AR-1242-4

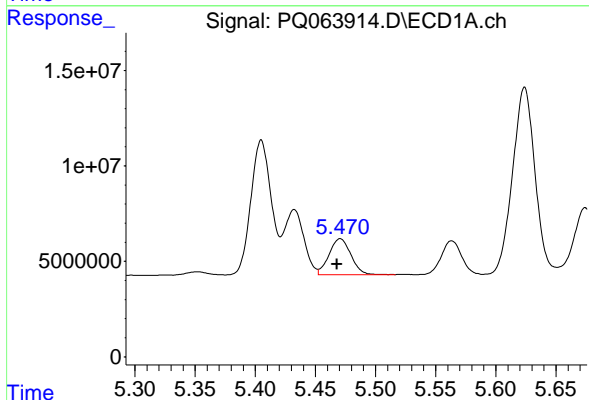
R.T.: 4.744 min
 Delta R.T.: -0.001 min
 Response: 1039893
 Conc: 12.26 ng/ml

Instrument :
 ECD_Q
 ClientSampleId :



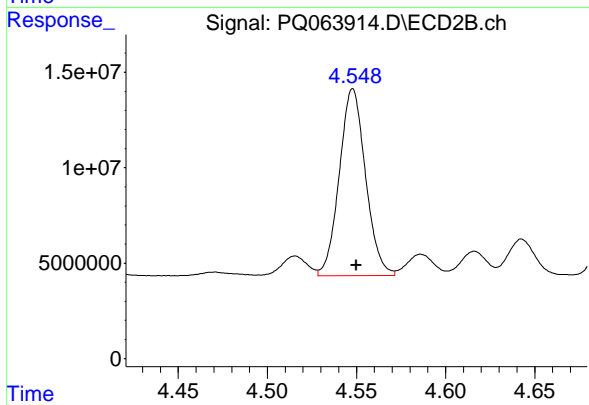
#19 AR-1242-4

R.T.: 4.050 min
 Delta R.T.: -0.002 min
 Response: 12802148
 Conc: 168.70 ng/ml



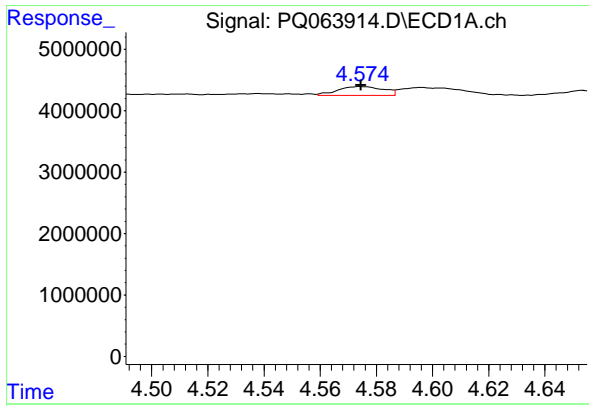
#20 AR-1242-5

R.T.: 5.471 min
 Delta R.T.: 0.003 min
 Response: 23962989
 Conc: 271.01 ng/ml



#20 AR-1242-5

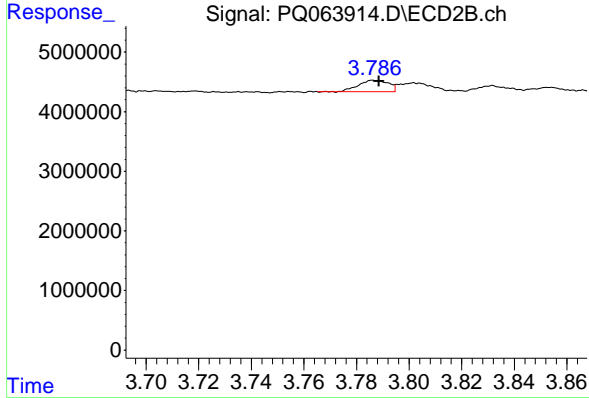
R.T.: 4.548 min
 Delta R.T.: -0.002 min
 Response: 100241936
 Conc: 996.50 ng/ml



#21 AR-1248-1

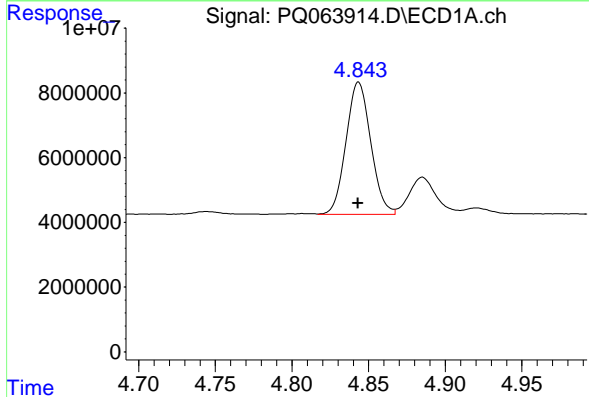
R.T.: 4.575 min
 Delta R.T.: 0.000 min
 Response: 1653145
 Conc: 19.86 ng/ml

Instrument : ECD_Q
 ClientSampleId :



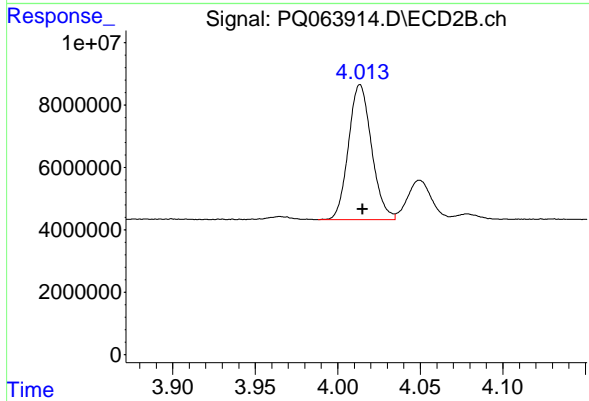
#21 AR-1248-1

R.T.: 3.786 min
 Delta R.T.: -0.002 min
 Response: 1523223
 Conc: 19.53 ng/ml



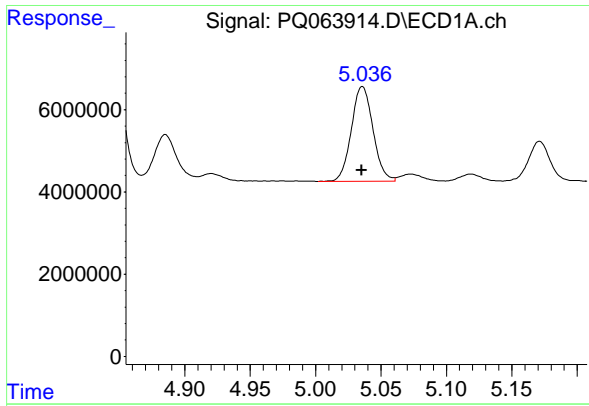
#22 AR-1248-2

R.T.: 4.843 min
 Delta R.T.: 0.000 min
 Response: 46290554
 Conc: 381.40 ng/ml



#22 AR-1248-2

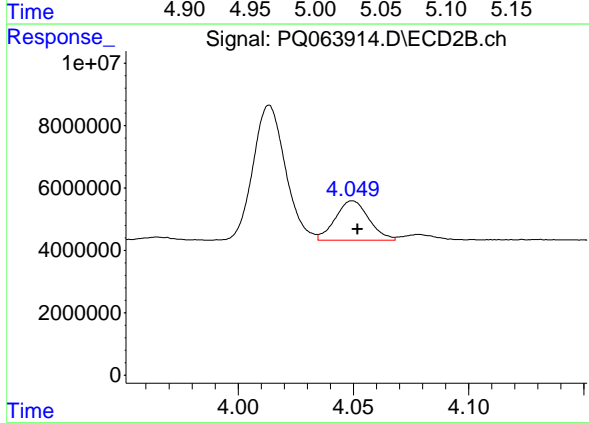
R.T.: 4.014 min
 Delta R.T.: -0.001 min
 Response: 42187220
 Conc: 355.88 ng/ml



#23 AR-1248-3

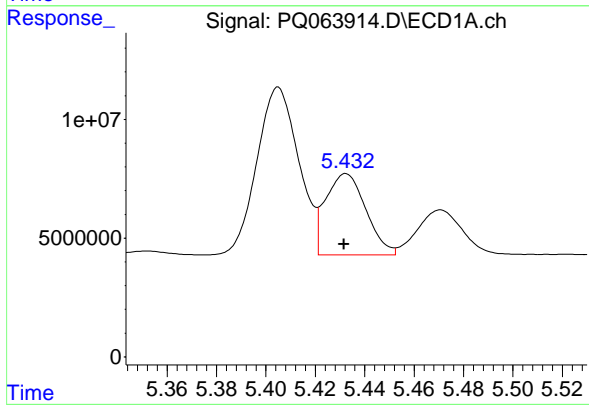
R.T.: 5.036 min
 Delta R.T.: 0.000 min
 Response: 26605916
 Conc: 183.75 ng/ml

Instrument :
 ECD_Q
 ClientSampleId :



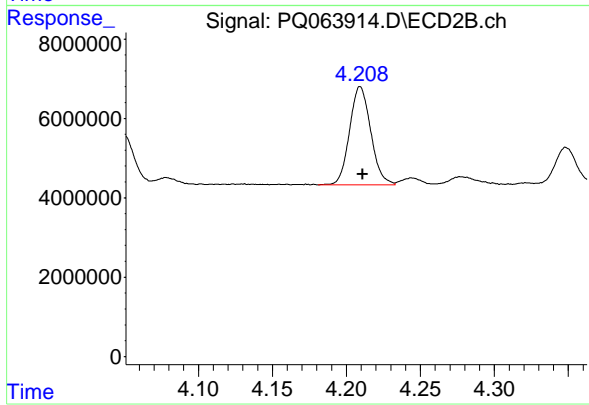
#23 AR-1248-3

R.T.: 4.050 min
 Delta R.T.: -0.002 min
 Response: 12802148
 Conc: 113.63 ng/ml



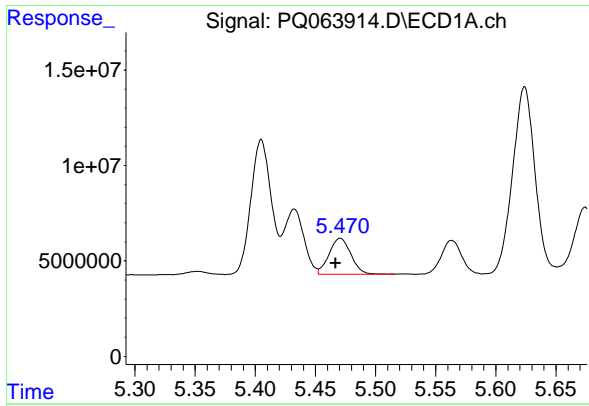
#24 AR-1248-4

R.T.: 5.432 min
 Delta R.T.: 0.000 min
 Response: 38804180
 Conc: 250.39 ng/ml



#24 AR-1248-4

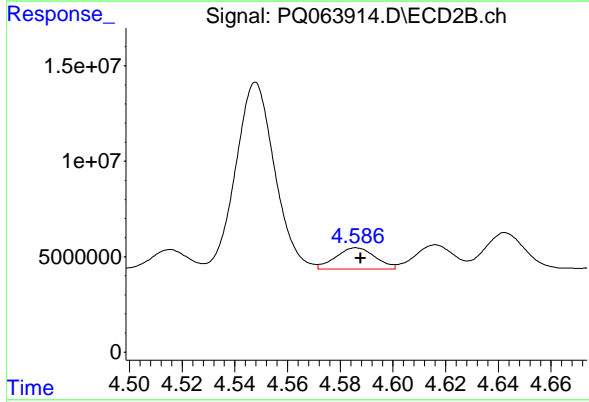
R.T.: 4.209 min
 Delta R.T.: -0.002 min
 Response: 24608877
 Conc: 178.77 ng/ml



#25 AR-1248-5

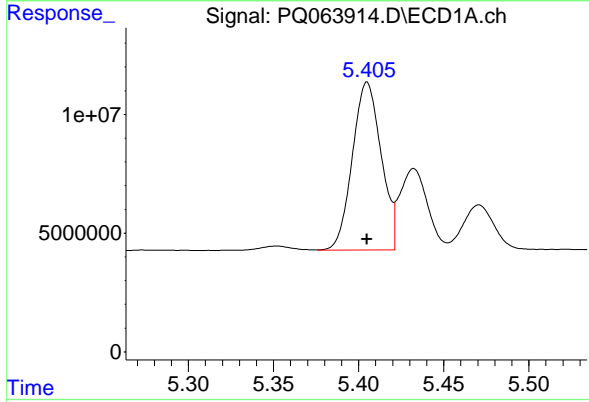
R.T.: 5.471 min
 Delta R.T.: 0.004 min
 Response: 23962989
 Conc: 156.72 ng/ml

Instrument :
 ECD_Q
 ClientSampleId :



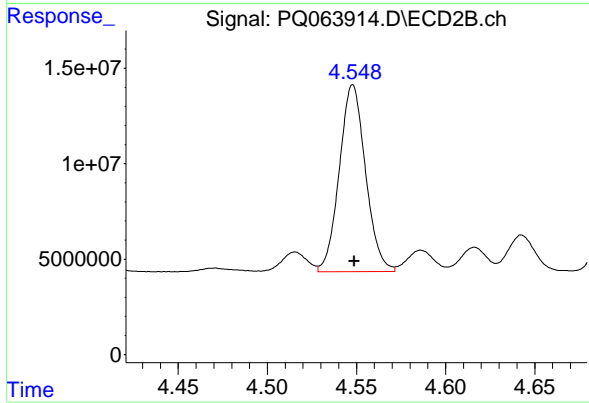
#25 AR-1248-5

R.T.: 4.586 min
 Delta R.T.: -0.002 min
 Response: 11656962
 Conc: 86.82 ng/ml



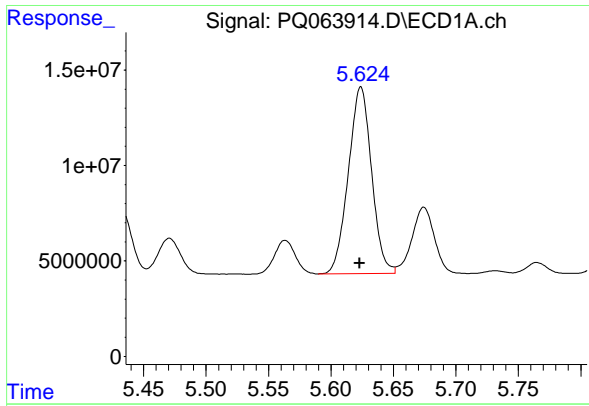
#26 AR-1254-1

R.T.: 5.405 min
 Delta R.T.: 0.000 min
 Response: 83234512
 Conc: 530.33 ng/ml



#26 AR-1254-1

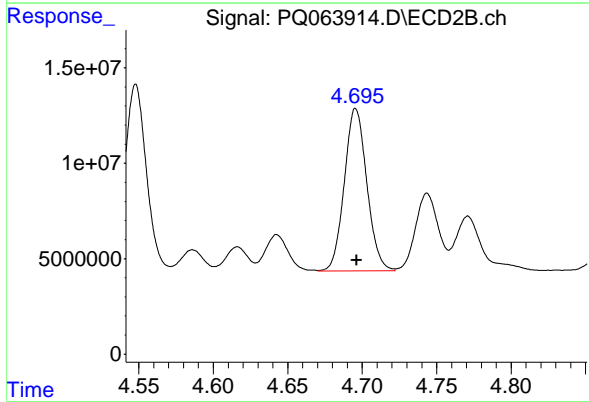
R.T.: 4.548 min
 Delta R.T.: 0.000 min
 Response: 100241936
 Conc: 515.74 ng/ml



#27 AR-1254-2

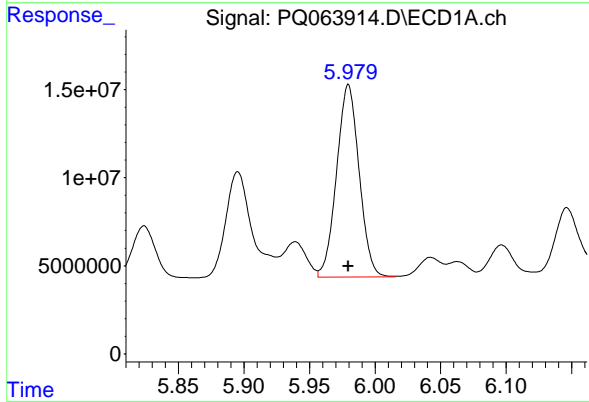
R.T.: 5.624 min
Delta R.T.: 0.000 min
Response: 126617072
Conc: 533.90 ng/ml

Instrument :
ECD_Q
ClientSampleId :



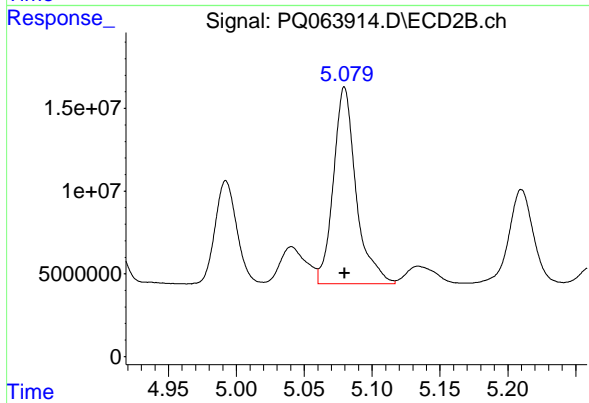
#27 AR-1254-2

R.T.: 4.696 min
Delta R.T.: 0.000 min
Response: 89647480
Conc: 514.61 ng/ml



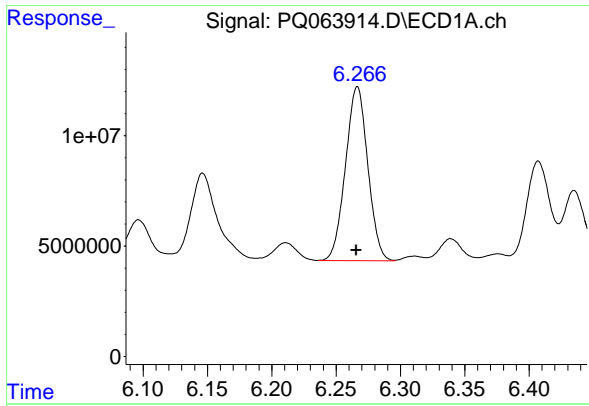
#28 AR-1254-3

R.T.: 5.980 min
Delta R.T.: 0.000 min
Response: 130464790
Conc: 526.19 ng/ml



#28 AR-1254-3

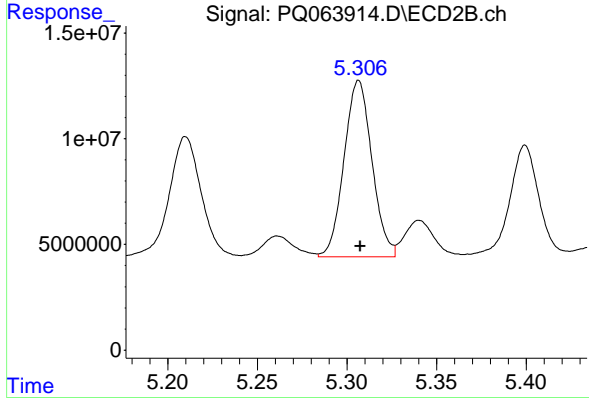
R.T.: 5.080 min
Delta R.T.: 0.000 min
Response: 138654013
Conc: 518.00 ng/ml



#29 AR-1254-4

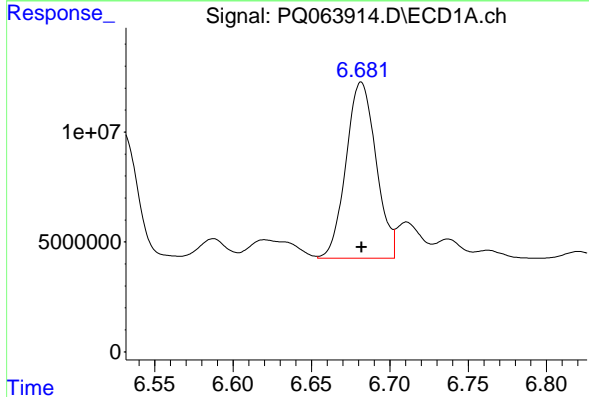
R.T.: 6.267 min
 Delta R.T.: 0.001 min
 Response: 95050497
 Conc: 524.50 ng/ml

Instrument :
 ECD_Q
 ClientSampleId :



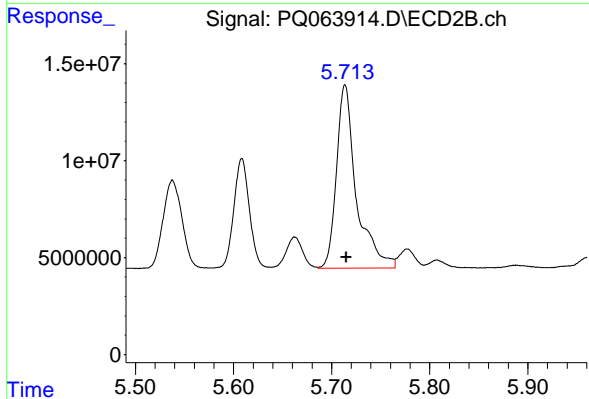
#29 AR-1254-4

R.T.: 5.307 min
 Delta R.T.: 0.000 min
 Response: 90444518
 Conc: 515.56 ng/ml



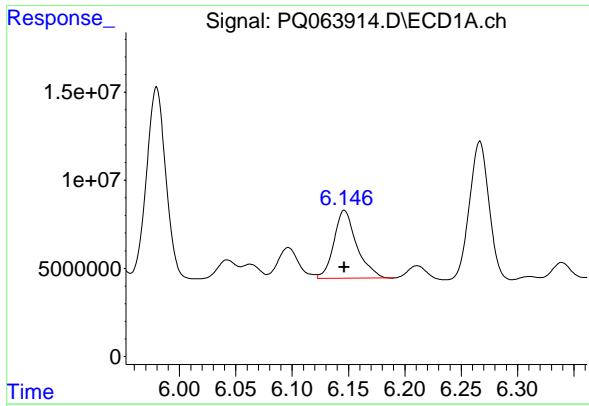
#30 AR-1254-5

R.T.: 6.682 min
 Delta R.T.: 0.000 min
 Response: 106974583
 Conc: 536.32 ng/ml



#30 AR-1254-5

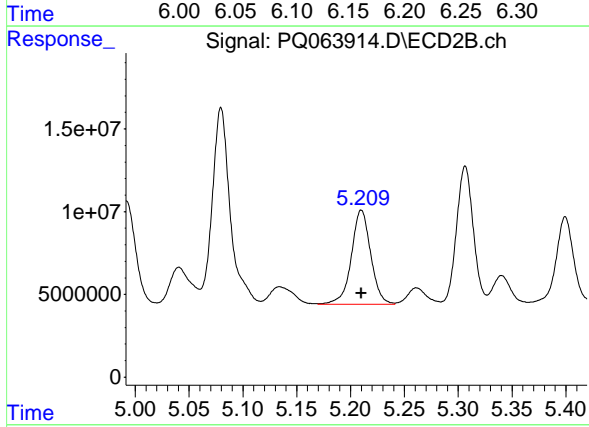
R.T.: 5.714 min
 Delta R.T.: -0.001 min
 Response: 133048722
 Conc: 521.88 ng/ml



#31 AR-1260-1

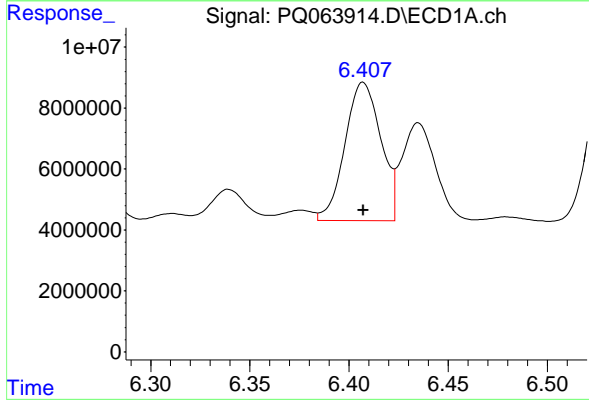
R.T.: 6.146 min
 Delta R.T.: 0.000 min
 Response: 54333162
 Conc: 265.39 ng/ml

Instrument :
 ECD_Q
 ClientSampleId :



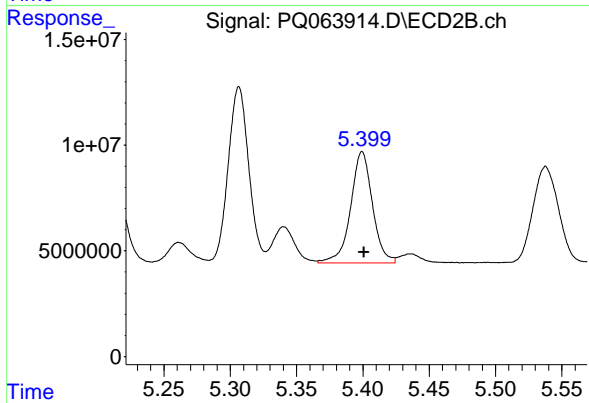
#31 AR-1260-1

R.T.: 5.210 min
 Delta R.T.: 0.000 min
 Response: 71246174
 Conc: 360.20 ng/ml



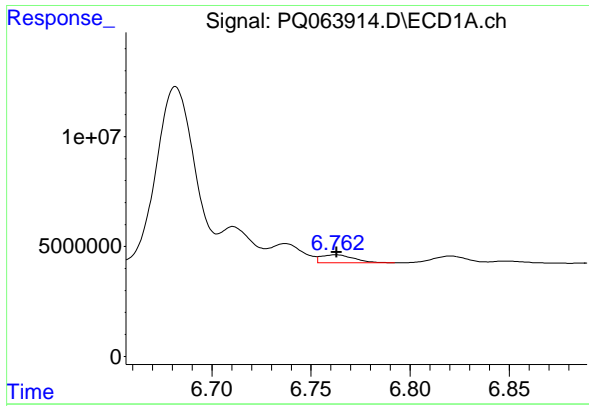
#32 AR-1260-2

R.T.: 6.407 min
 Delta R.T.: 0.000 min
 Response: 57359961
 Conc: 237.45 ng/ml



#32 AR-1260-2

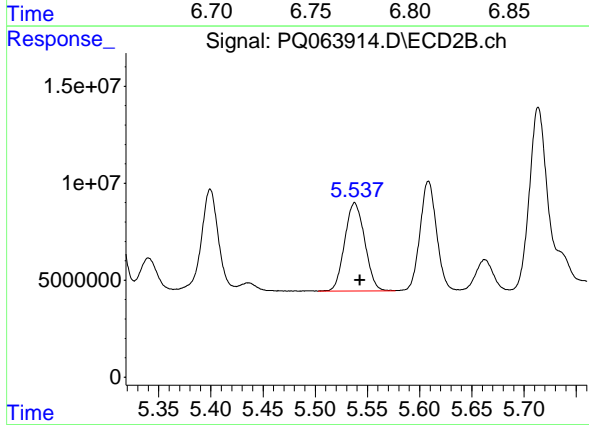
R.T.: 5.399 min
 Delta R.T.: -0.001 min
 Response: 60465450
 Conc: 253.28 ng/ml



#33 AR-1260-3

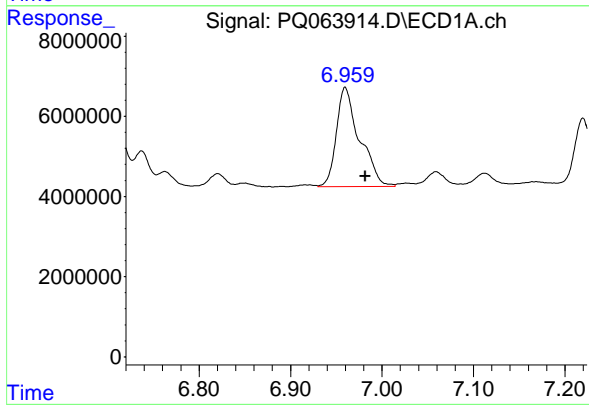
R.T.: 6.763 min
 Delta R.T.: 0.000 min
 Response: 4249713
 Conc: 26.40 ng/ml

Instrument :
 ECD_Q
 ClientSampleId :



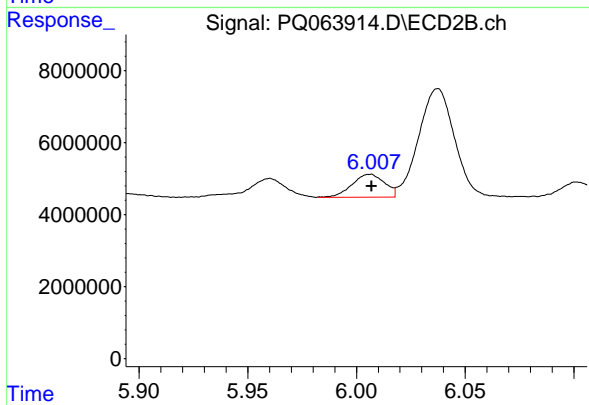
#33 AR-1260-3

R.T.: 5.538 min
 Delta R.T.: -0.005 min
 Response: 60947789
 Conc: 269.83 ng/ml



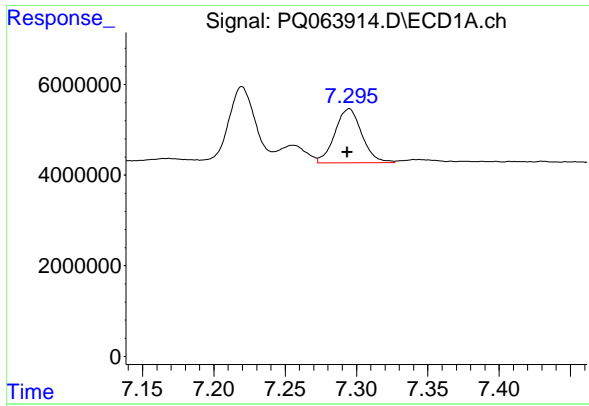
#34 AR-1260-4

R.T.: 6.960 min
 Delta R.T.: -0.022 min
 Response: 43658540
 Conc: 236.64 ng/ml



#34 AR-1260-4

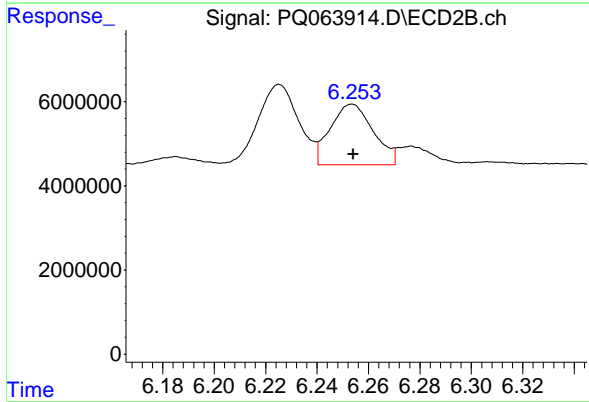
R.T.: 6.006 min
 Delta R.T.: 0.000 min
 Response: 6636850
 Conc: 38.57 ng/ml



#35 AR-1260-5

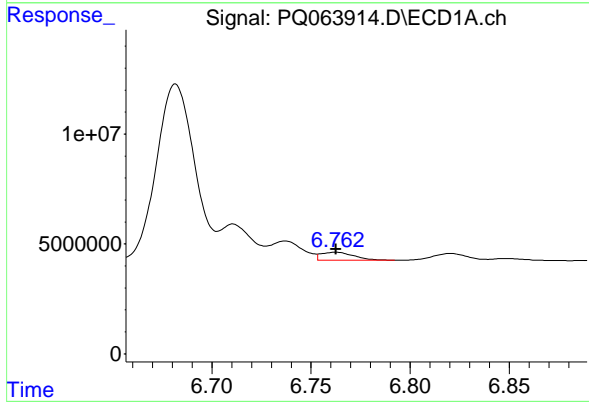
R.T.: 7.295 min
 Delta R.T.: 0.001 min
 Response: 15634308
 Conc: 43.99 ng/ml

Instrument :
 ECD_Q
 ClientSampleId :



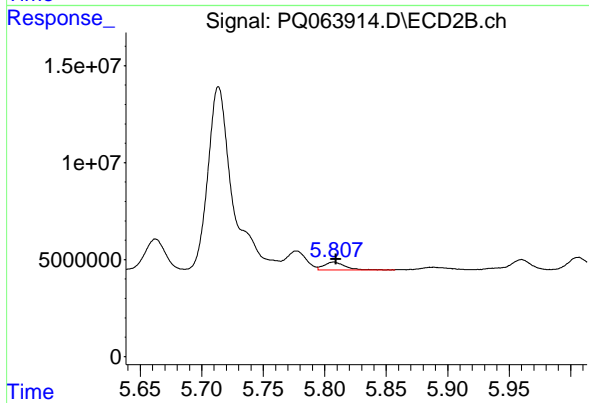
#35 AR-1260-5

R.T.: 6.254 min
 Delta R.T.: 0.000 min
 Response: 16741506
 Conc: 41.95 ng/ml



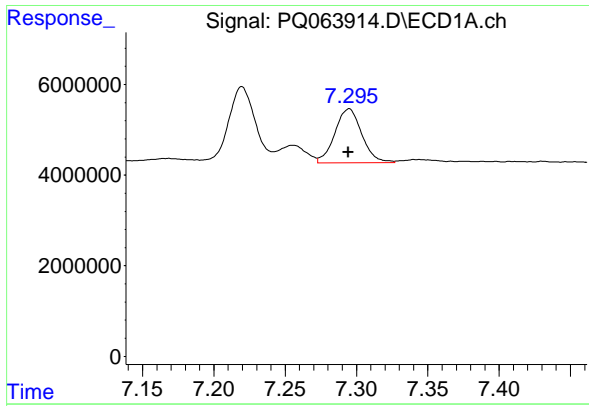
#36 AR-1262-1

R.T.: 6.763 min
 Delta R.T.: 0.000 min
 Response: 4249713
 Conc: 16.26 ng/ml



#36 AR-1262-1

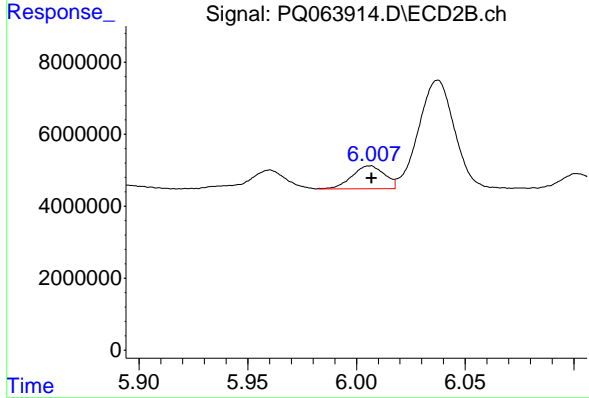
R.T.: 5.807 min
 Delta R.T.: -0.002 min
 Response: 4870630
 Conc: 44.49 ng/ml



#37 AR-1262-2

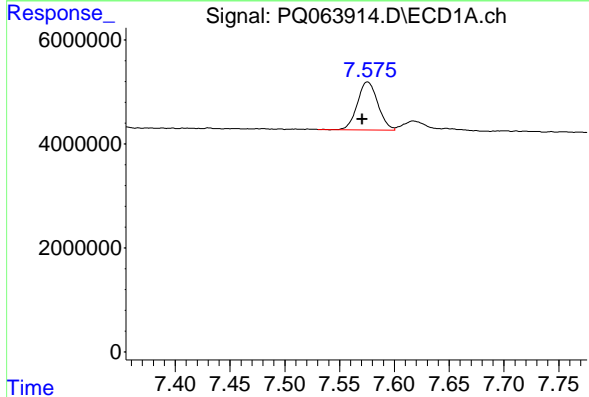
R.T.: 7.295 min
 Delta R.T.: 0.000 min
 Response: 15634308
 Conc: 36.76 ng/ml

Instrument :
 ECD_Q
 ClientSampleId :



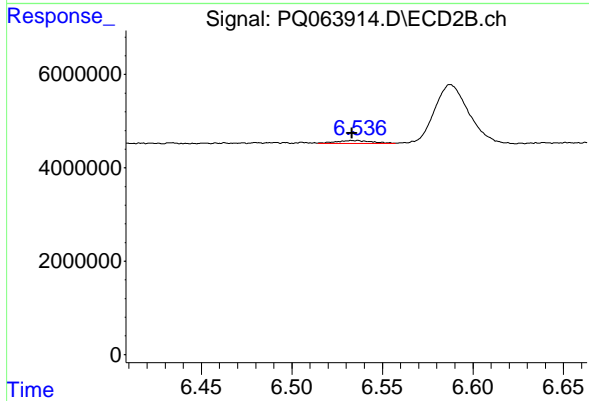
#37 AR-1262-2

R.T.: 6.006 min
 Delta R.T.: 0.000 min
 Response: 6636850
 Conc: 26.87 ng/ml



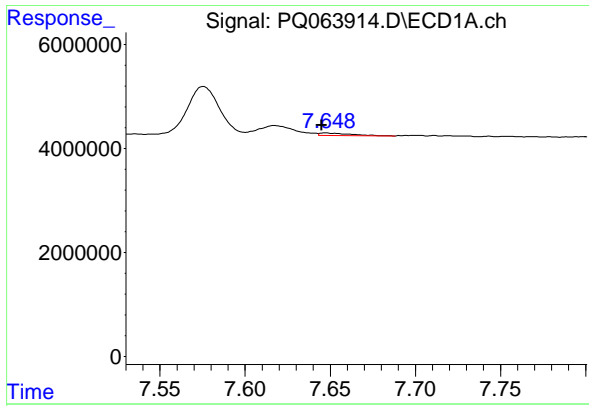
#38 AR-1262-3

R.T.: 7.575 min
 Delta R.T.: 0.005 min
 Response: 12039590
 Conc: 42.02 ng/ml



#38 AR-1262-3

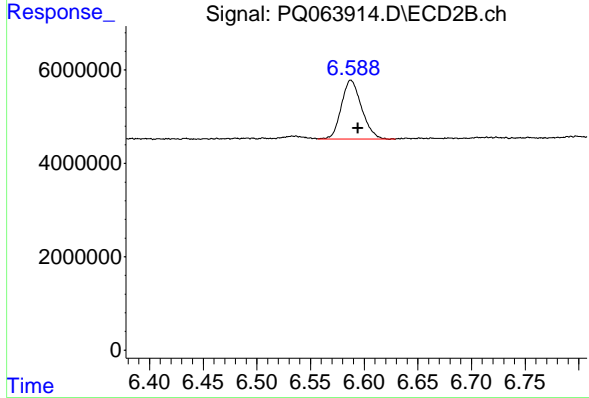
R.T.: 6.535 min
 Delta R.T.: 0.002 min
 Response: 942337
 Conc: 4.65 ng/ml



#39 AR-1262-4

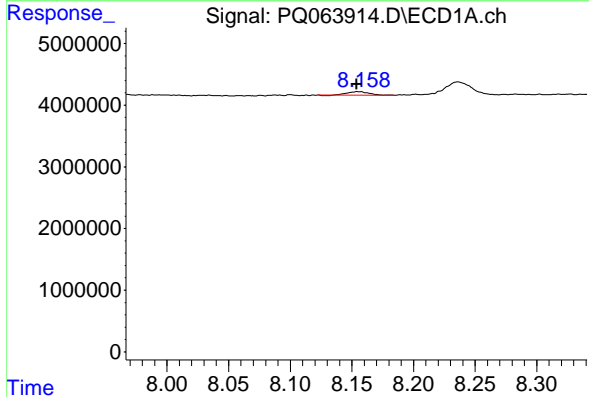
R.T.: 7.648 min
 Delta R.T.: 0.003 min
 Response: 640178
 Conc: 2.79 ng/ml

Instrument :
 ECD_Q
 ClientSampleId :



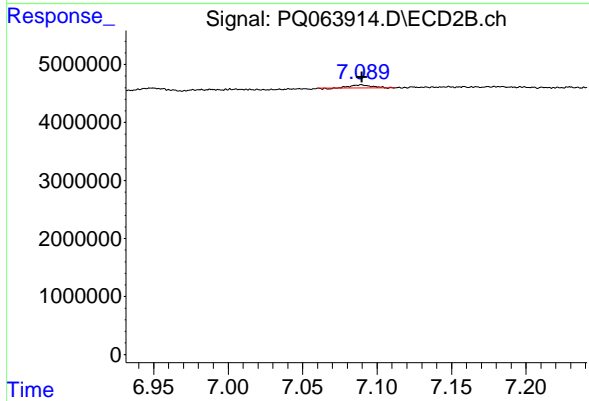
#39 AR-1262-4

R.T.: 6.588 min
 Delta R.T.: -0.007 min
 Response: 16655276
 Conc: 44.70 ng/ml



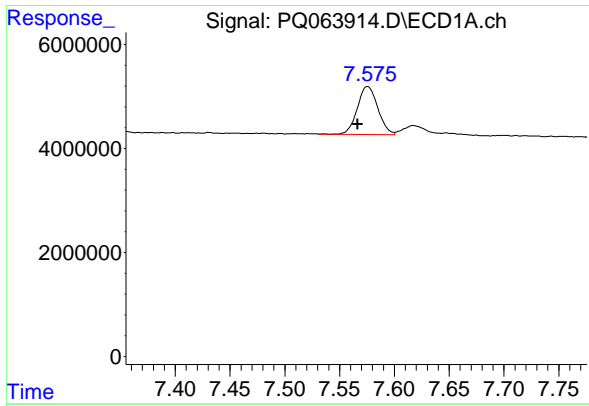
#40 AR-1262-5

R.T.: 8.156 min
 Delta R.T.: 0.002 min
 Response: 701784
 Conc: 4.93 ng/ml



#40 AR-1262-5

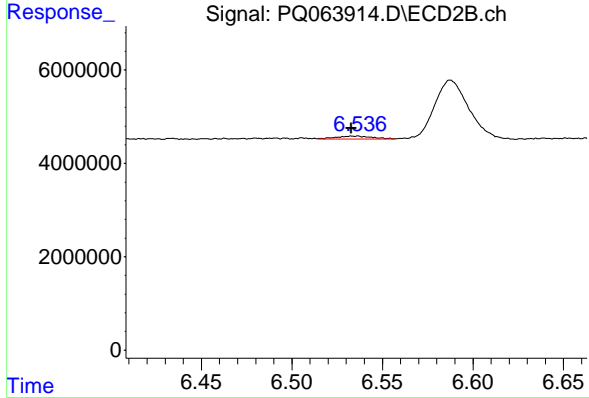
R.T.: 7.089 min
 Delta R.T.: 0.000 min
 Response: 489747
 Conc: 2.71 ng/ml



#41 AR-1268-1

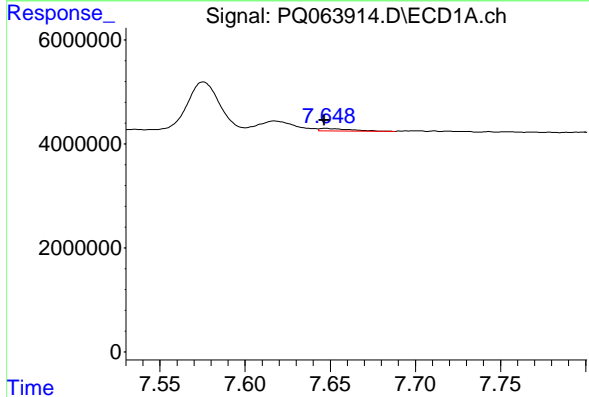
R.T.: 7.575 min
 Delta R.T.: 0.009 min
 Response: 12039590
 Conc: 24.35 ng/ml

Instrument :
 ECD_Q
 ClientSampleId :



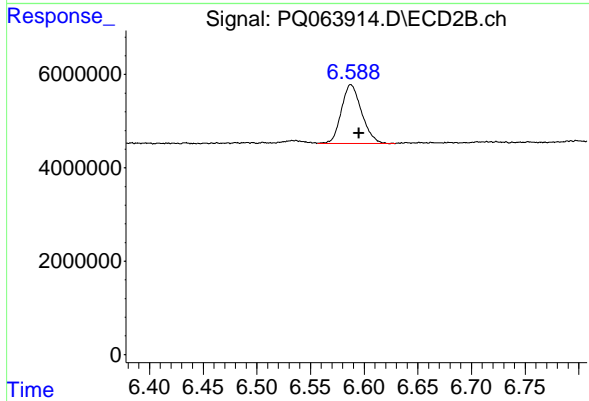
#41 AR-1268-1

R.T.: 6.535 min
 Delta R.T.: 0.002 min
 Response: 942337
 Conc: 1.64 ng/ml



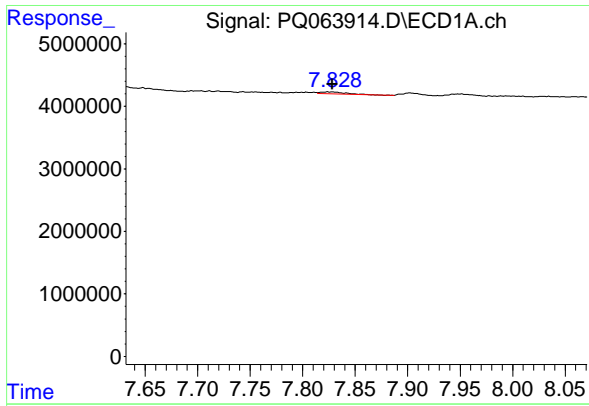
#42 AR-1268-2

R.T.: 7.648 min
 Delta R.T.: 0.001 min
 Response: 640178
 Conc: 1.43 ng/ml



#42 AR-1268-2

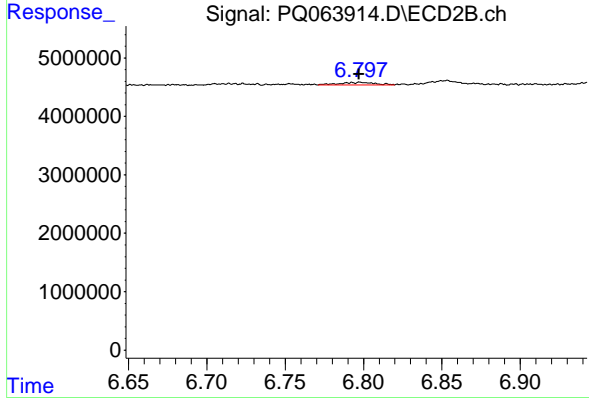
R.T.: 6.588 min
 Delta R.T.: -0.008 min
 Response: 16655276
 Conc: 32.08 ng/ml



#43 AR-1268-3

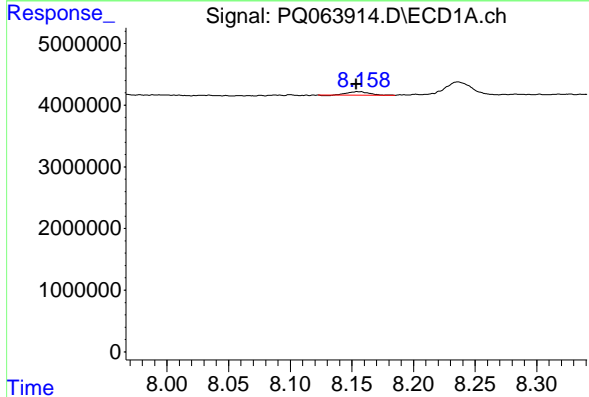
R.T.: 7.828 min
 Delta R.T.: 0.000 min
 Response: 528952
 Conc: 1.36 ng/ml

Instrument :
 ECD_Q
 ClientSampleId :



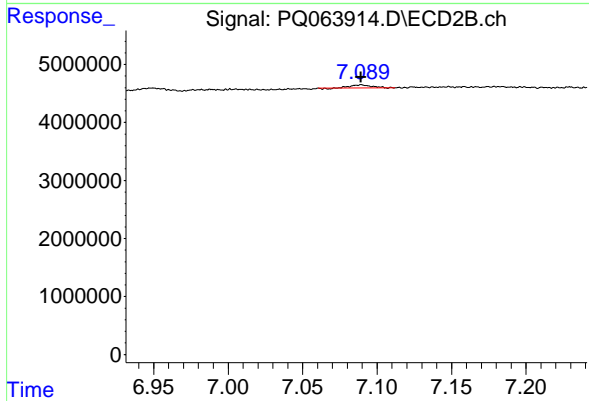
#43 AR-1268-3

R.T.: 6.798 min
 Delta R.T.: 0.001 min
 Response: 752624
 Conc: 1.62 ng/ml



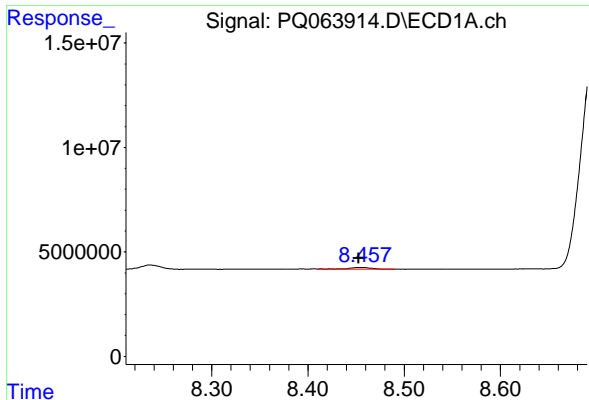
#44 AR-1268-4

R.T.: 8.156 min
 Delta R.T.: 0.002 min
 Response: 701784
 Conc: 4.49 ng/ml



#44 AR-1268-4

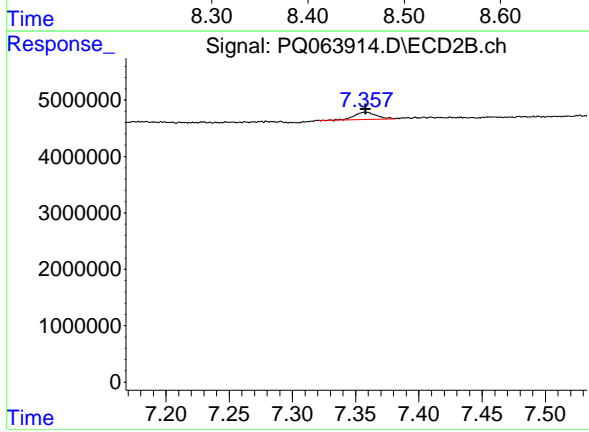
R.T.: 7.089 min
 Delta R.T.: 0.000 min
 Response: 489747
 Conc: 2.51 ng/ml



#45 AR-1268-5

R.T.: 8.457 min
 Delta R.T.: 0.004 min
 Response: 1236978
 Conc: 1.10 ng/ml

Instrument :
 ECD_Q
 ClientSampleId :



#45 AR-1268-5

R.T.: 7.358 min
 Delta R.T.: 0.000 min
 Response: 1488839
 Conc: 0.97 ng/ml