

Data Path : Z:\pestpcbsrv\HPCHEM1\ECD_Q\Data\PQ111023\
 Data File : PQ063926.D
 Signal(s) : Signal #1: ECD1A.ch Signal #2: ECD2B.ch
 Acq On : 10 Nov 2023 12:50
 Operator : YP\AJ
 Sample : AR1660CCC500
 Misc :
 ALS Vial : 141 Sample Multiplier: 1

Instrument :
 ECD_Q
 ClientSampleId :
 AR1660CCC500

Integration File signal 1: autoint1.e
 Integration File signal 2: autoint2.e
 Quant Time: Nov 10 22:31:30 2023
 Quant Method : Z:\pestpcbsrv\HPCHEM1\ECD_Q\Method\PQ110823.M
 Quant Title : GC EXTRACTABLES
 QLast Update : Wed Nov 08 18:43:53 2023
 Response via : Initial Calibration
 Integrator: ChemStation

Volume Inj. : 2 µl
 Signal #1 Phase : ZB-MR1 Signal #2 Phase: ZB-MR2
 Signal #1 Info : 30Mx0.32mmx 0.50µ Signal #2 Info : 30M x 0.32mm x 0.25µm

Compound	RT#1	RT#2	Resp#1	Resp#2	ng/ml	ng/ml

System Monitoring Compounds						
1) SA Tetrachlo...	3.460	2.778	226.3E6	208.5E6	53.086	56.701
2) SA Decachlor...	8.695	7.576	163.6E6	262.5E6	50.666	56.034
Target Compounds						
3) L1 AR-1016-1	4.574	3.788	73769152	68477929	535.296	543.570
4) L1 AR-1016-2	4.594	3.803	111.1E6	98540339	525.834	543.880
5) L1 AR-1016-3	4.652	3.964	68593674	52812045	515.051	541.941
6) L1 AR-1016-4	4.745	4.013	55284461	45583243	525.826	540.298
7) L1 AR-1016-5	5.035	4.209	56099677	54466225	529.522	544.602
31) L7 AR-1260-1	6.146	5.208	106.1E6	103.4E6	518.426	522.545
32) L7 AR-1260-2	6.407	5.399	127.2E6	123.9E6	526.689	518.945
33) L7 AR-1260-3	6.763	5.541	83755070	117.3E6	520.375	519.519
34) L7 AR-1260-4	6.982	6.005	97212725	92726298	526.924	538.914
35) L7 AR-1260-5	7.294	6.253	184.3E6	209.8E6	518.548	525.710

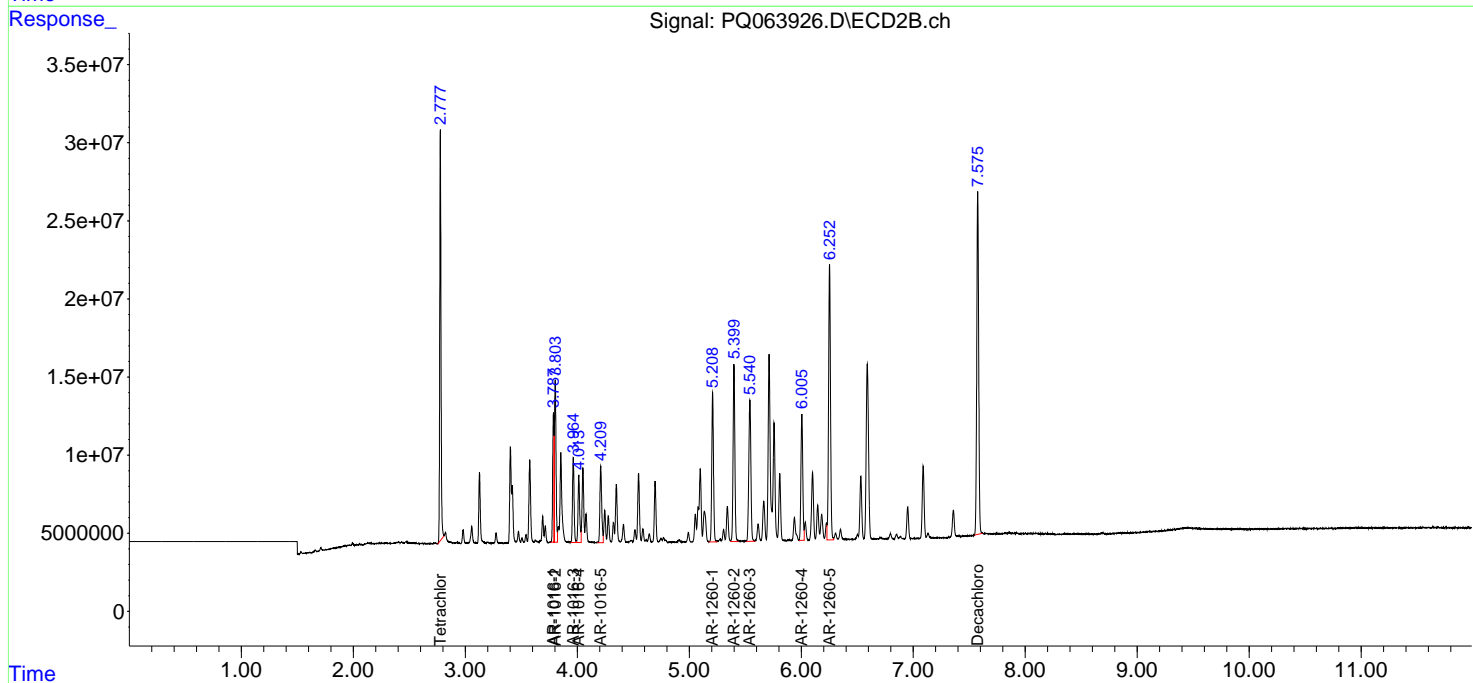
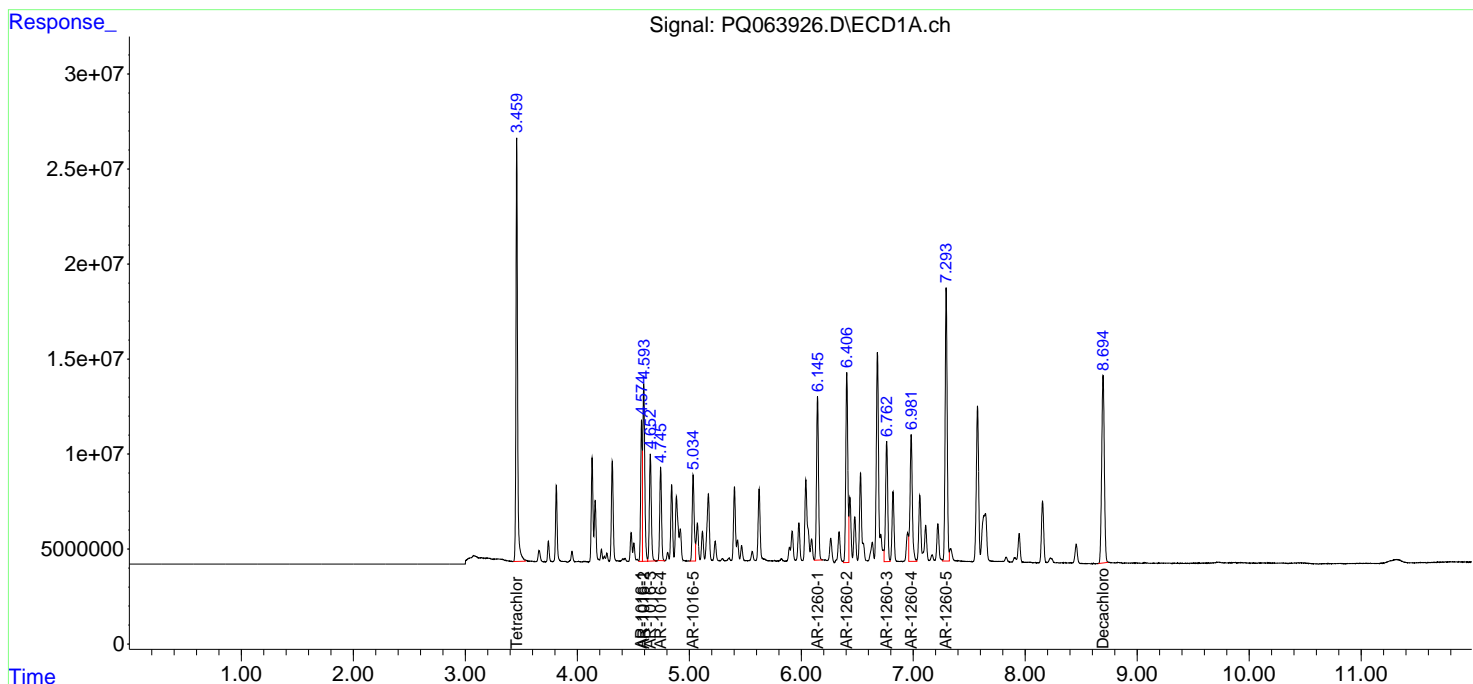
(f)=RT Delta > 1/2 Window (#)=Amounts differ by > 25% (m)=manual int.

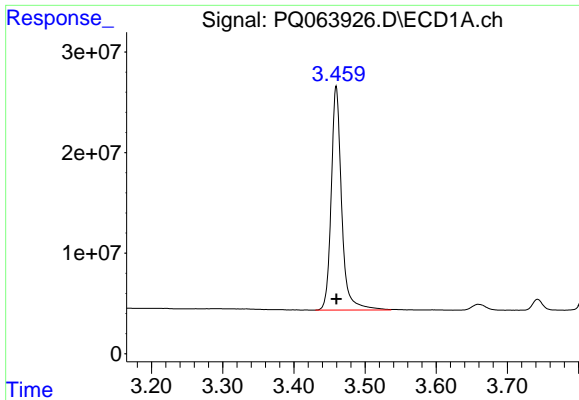
Data Path : Z:\pestpcbsrv\HPCHEM1\ECD_Q\Data\PQ111023\
 Data File : PQ063926.D
 Signal(s) : Signal #1: ECD1A.ch Signal #2: ECD2B.ch
 Acq On : 10 Nov 2023 12:50
 Operator : YP\AJ
 Sample : AR1660CCC500
 Misc :
 ALS Vial : 141 Sample Multiplier: 1

Instrument :
 ECD_Q
 ClientSampleId :
 AR1660CCC500

Integration File signal 1: autoint1.e
 Integration File signal 2: autoint2.e
 Quant Time: Nov 10 22:31:30 2023
 Quant Method : Z:\pestpcbsrv\HPCHEM1\ECD_Q\Method\PQ110823.M
 Quant Title : GC EXTRACTABLES
 QLast Update : Wed Nov 08 18:43:53 2023
 Response via : Initial Calibration
 Integrator: ChemStation

Volume Inj. : 2 µl
 Signal #1 Phase : ZB-MR1 Signal #2 Phase: ZB-MR2
 Signal #1 Info : 30Mx0.32mmx 0.50µ Signal #2 Info : 30M x 0.32mm x 0.25µm

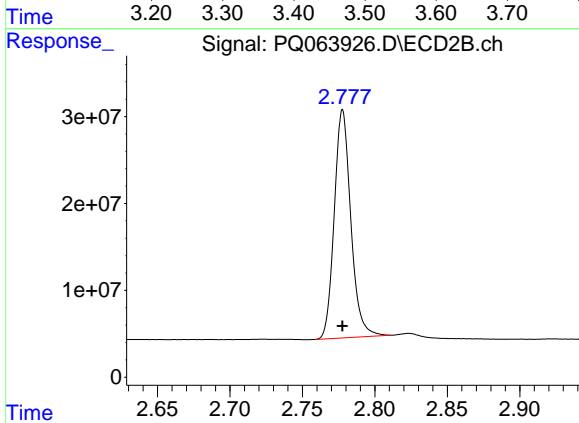




#1 Tetrachloro-m-xylene

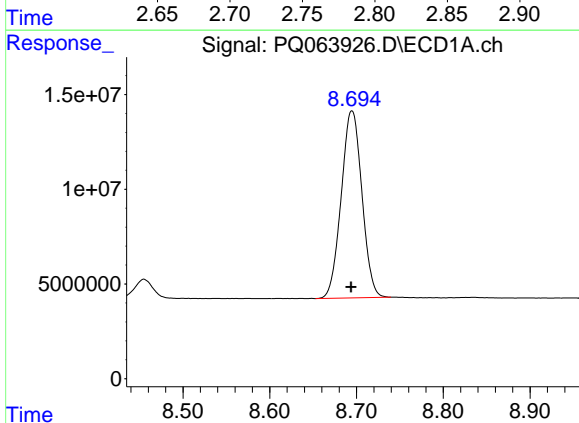
R.T.: 3.460 min
 Delta R.T.: 0.000 min
 Response: 226278590
 Conc: 53.09 ng/ml

Instrument :
 ECD_Q
 ClientSampleId :
 AR1660CCC500



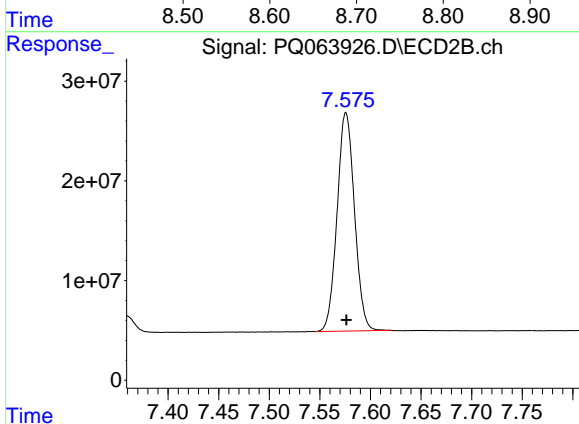
#1 Tetrachloro-m-xylene

R.T.: 2.778 min
 Delta R.T.: 0.000 min
 Response: 208529698
 Conc: 56.70 ng/ml



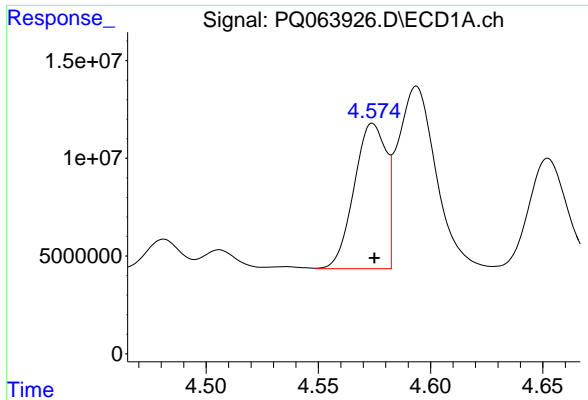
#2 Decachlorobiphenyl

R.T.: 8.695 min
 Delta R.T.: 0.000 min
 Response: 163581379
 Conc: 50.67 ng/ml



#2 Decachlorobiphenyl

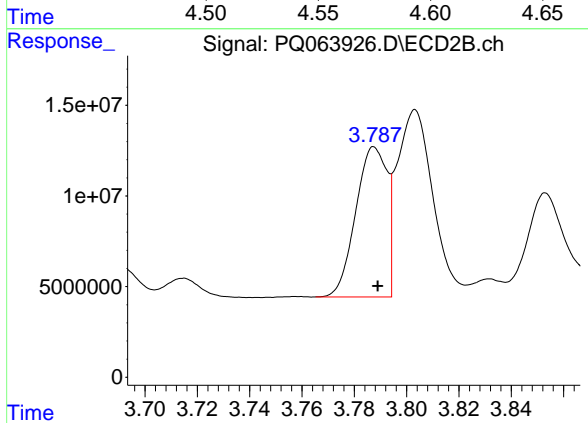
R.T.: 7.576 min
 Delta R.T.: 0.000 min
 Response: 262540751
 Conc: 56.03 ng/ml



#3 AR-1016-1

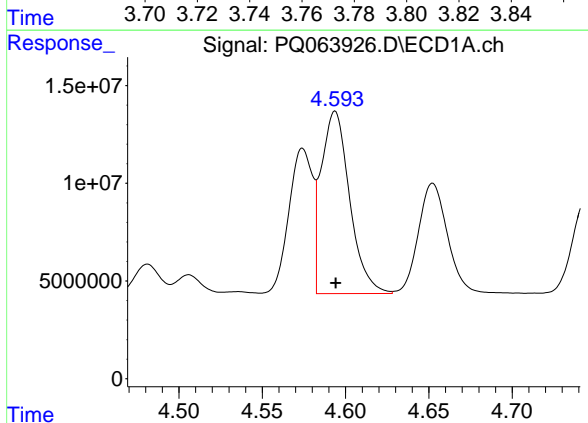
R.T.: 4.574 min
 Delta R.T.: 0.000 min
 Response: 73769152
 Conc: 535.30 ng/ml

Instrument :
 ECD_Q
 ClientSampleId :
 AR1660CCC500



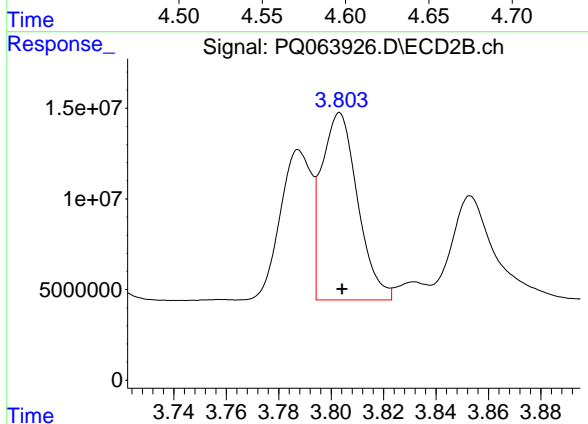
#3 AR-1016-1

R.T.: 3.788 min
 Delta R.T.: -0.001 min
 Response: 68477929
 Conc: 543.57 ng/ml



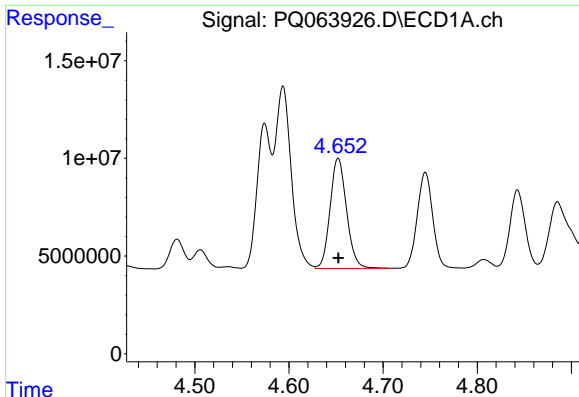
#4 AR-1016-2

R.T.: 4.594 min
 Delta R.T.: 0.000 min
 Response: 111062542
 Conc: 525.83 ng/ml



#4 AR-1016-2

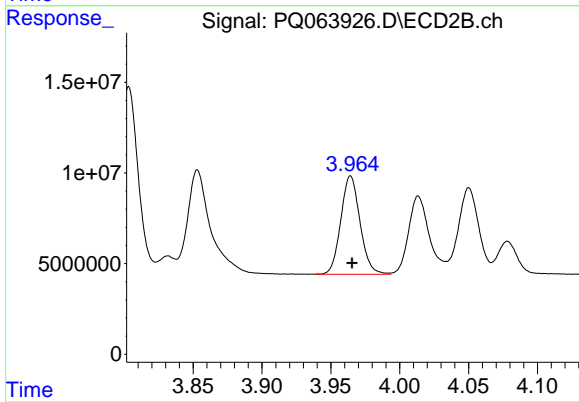
R.T.: 3.803 min
 Delta R.T.: 0.000 min
 Response: 98540339
 Conc: 543.88 ng/ml



#5 AR-1016-3

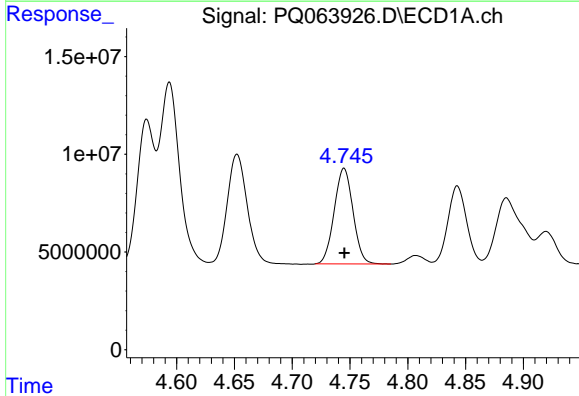
R.T.: 4.652 min
Delta R.T.: 0.000 min
Response: 68593674
Conc: 515.05 ng/ml

Instrument :
ECD_Q
ClientSampleId :
AR1660CCC500



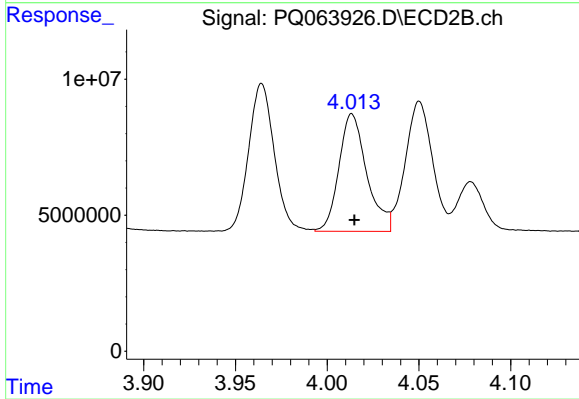
#5 AR-1016-3

R.T.: 3.964 min
Delta R.T.: -0.001 min
Response: 52812045
Conc: 541.94 ng/ml



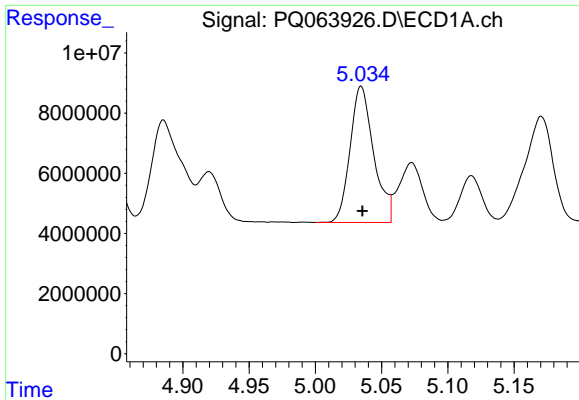
#6 AR-1016-4

R.T.: 4.745 min
Delta R.T.: 0.000 min
Response: 55284461
Conc: 525.83 ng/ml



#6 AR-1016-4

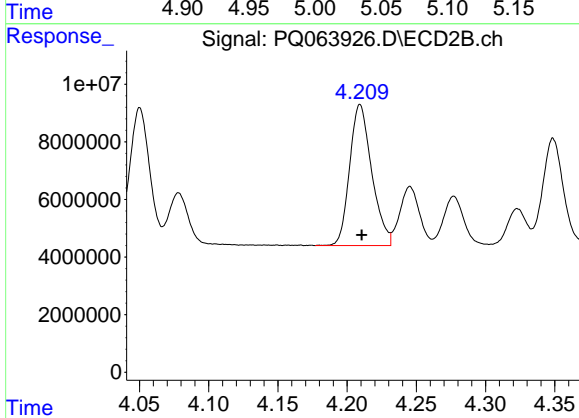
R.T.: 4.013 min
Delta R.T.: -0.001 min
Response: 45583243
Conc: 540.30 ng/ml



#7 AR-1016-5

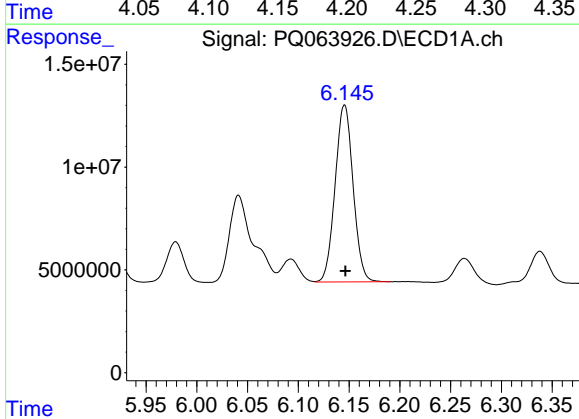
R.T.: 5.035 min
 Delta R.T.: -0.001 min
 Response: 56099677
 Conc: 529.52 ng/ml

Instrument :
 ECD_Q
 ClientSampleId :
 AR1660CCC500



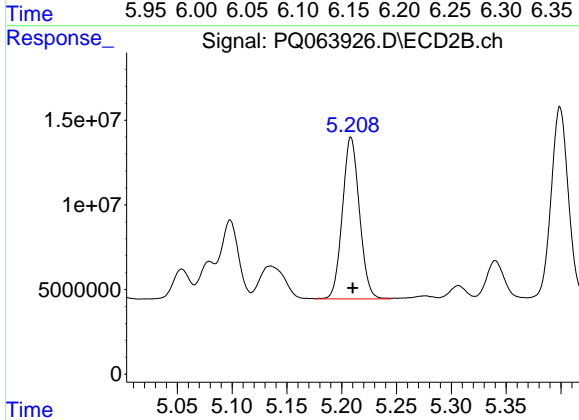
#7 AR-1016-5

R.T.: 4.209 min
 Delta R.T.: -0.001 min
 Response: 54466225
 Conc: 544.60 ng/ml



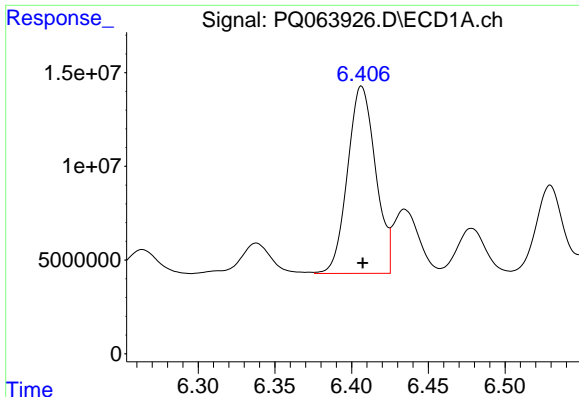
#31 AR-1260-1

R.T.: 6.146 min
 Delta R.T.: 0.000 min
 Response: 106135692
 Conc: 518.43 ng/ml



#31 AR-1260-1

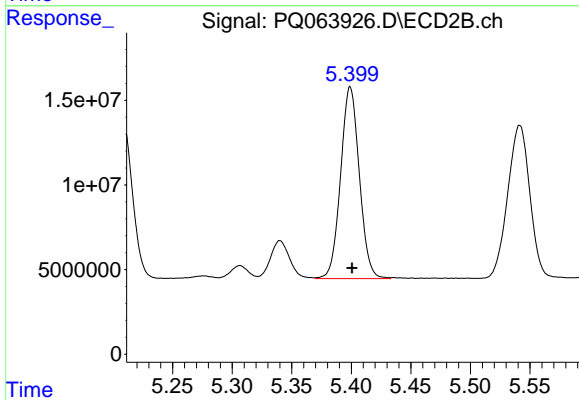
R.T.: 5.208 min
 Delta R.T.: -0.002 min
 Response: 103356440
 Conc: 522.54 ng/ml



#32 AR-1260-2

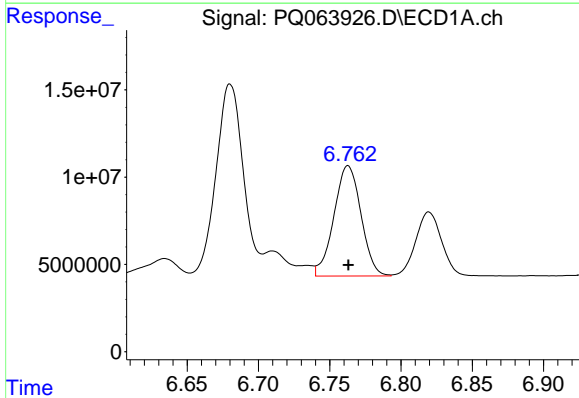
R.T.: 6.407 min
Delta R.T.: 0.000 min
Response: 127228683
Conc: 526.69 ng/ml

Instrument :
ECD_Q
ClientSampleId :
AR1660CCC500



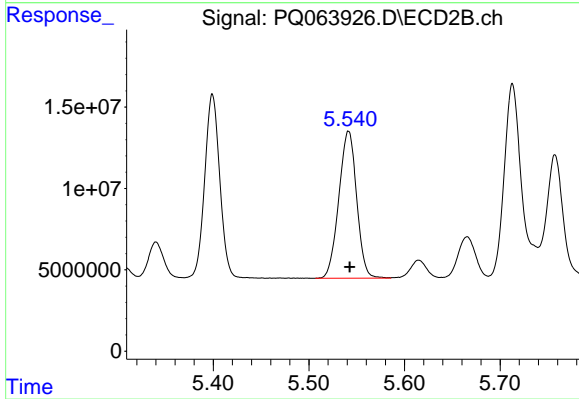
#32 AR-1260-2

R.T.: 5.399 min
Delta R.T.: -0.002 min
Response: 123889378
Conc: 518.94 ng/ml



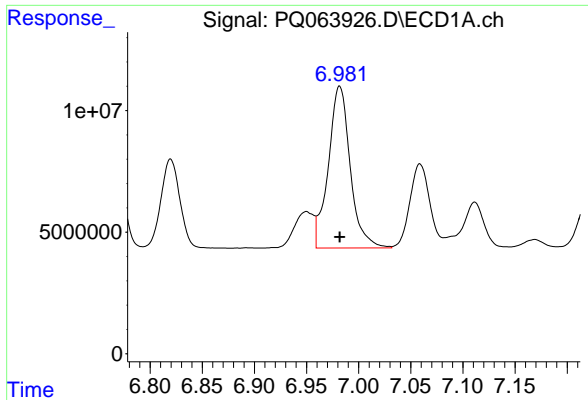
#33 AR-1260-3

R.T.: 6.763 min
Delta R.T.: 0.000 min
Response: 83755070
Conc: 520.38 ng/ml



#33 AR-1260-3

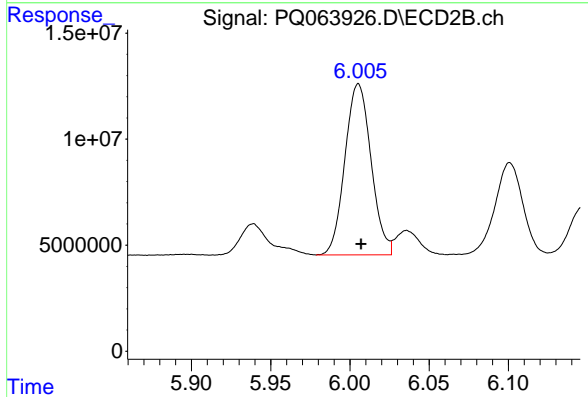
R.T.: 5.541 min
Delta R.T.: -0.001 min
Response: 117346963
Conc: 519.52 ng/ml



#34 AR-1260-4

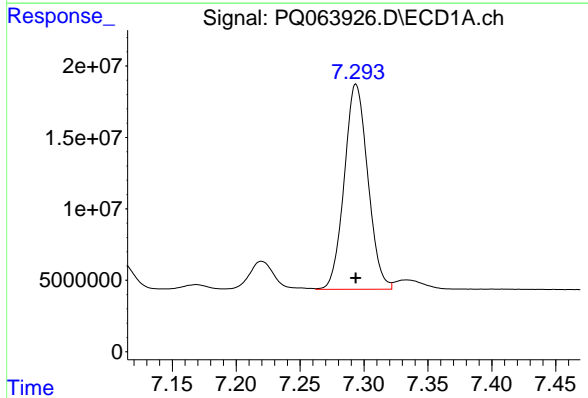
R.T.: 6.982 min
 Delta R.T.: 0.000 min
 Response: 97212725
 Conc: 526.92 ng/ml

Instrument :
 ECD_Q
 ClientSampleId :
 AR1660CCC500



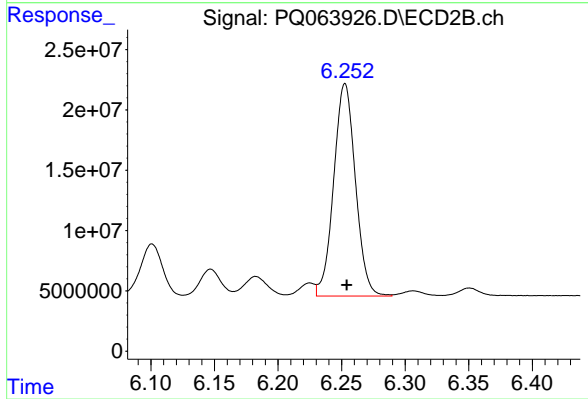
#34 AR-1260-4

R.T.: 6.005 min
 Delta R.T.: -0.002 min
 Response: 92726298
 Conc: 538.91 ng/ml



#35 AR-1260-5

R.T.: 7.294 min
 Delta R.T.: 0.000 min
 Response: 184286934
 Conc: 518.55 ng/ml



#35 AR-1260-5

R.T.: 6.253 min
 Delta R.T.: -0.001 min
 Response: 209794468
 Conc: 525.71 ng/ml