

Data Path : Z:\pestpcbsrv\HPCHEM1\ECD\_Q\Data\PQ111119\  
 Data File : PQ044937.D  
 Signal(s) : Signal #1: ECD1A.ch Signal #2: ECD2B.ch  
 Acq On : 11 Nov 2019 15:00  
 Operator : SM\AJ  
 Sample : K5719-19  
 Misc :  
 ALS Vial : 27 Sample Multiplier: 1

Instrument :  
 ECD\_Q  
 ClientSampleId :  
 F2J16

Integration File signal 1: autoint1.e  
 Integration File signal 2: autoint2.e  
 Quant Time: Nov 11 17:20:55 2019  
 Quant Method : Z:\pestpcbsrv\HPCHEM1\ECD\_Q\Method\PQ110719CLP.M  
 Quant Title : GC EXTRACTABLES  
 QLast Update : Fri Nov 08 03:35:55 2019  
 Response via : Initial Calibration  
 Integrator: ChemStation

Volume Inj. : 1 µl  
 Signal #1 Phase : ZB MR1 Signal #2 Phase: ZB MR2  
 Signal #1 Info : 30Mx0.32mmx 0.5µm Signal #2 Info : 30M x 0.32mm x 0.25µm

	Compound	RT#1	RT#2	Resp#1	Resp#2	ng/ml	ng/ml
-----							
System Monitoring Compounds							
1)	SA Tetrachlo...	5.104	4.309	170.1E6	116.0E6	21.430	24.609
2)	SA Decachlor...	11.171	9.726	206.4E6	232.9E6	29.800	34.331
Target Compounds							
3)	L1 AR-1016-1	0.000	5.600	0	6715246	N.D.	36.460 #
4)	L1 AR-1016-2	6.495	5.600	11862245	6715246	31.370	25.414
5)	L1 AR-1016-3	6.495	5.864	11862245	19887258	51.093	154.099 #
6)	L1 AR-1016-4	6.556	5.864	1967319	19887258	10.391	183.142 #
7)	L1 AR-1016-5	0.000	6.021	0	3552773	N.D.	23.254 #
9)	L2 AR-1221-2	5.455	4.672	2588333	1841050	44.085	46.632
12)	L3 AR-1232-2	6.104	5.600	2058046	6715246	22.947	53.992 #
13)	L3 AR-1232-3	6.495	5.864	11862245	19887258	67.184	335.821 #
14)	L3 AR-1232-4	6.556	5.864	1967319	19887258	22.236	330.824 #
15)	L3 AR-1232-5	6.748	6.021	16159070	3552773	243.579	48.780 #
16)	L4 AR-1242-1	0.000	5.600	0	6715246	N.D.	42.830 #
17)	L4 AR-1242-2	6.495	5.600	11862245	6715246	36.887	30.013
18)	L4 AR-1242-3	6.495	5.864	11862245	19887258	59.786	178.930 #
19)	L4 AR-1242-4	6.556	5.934	1967319	3578368	12.185	30.009 #
20)	L4 AR-1242-5	0.000	6.514	0	8036941	N.D.	48.945 #
21)	L5 AR-1248-1	0.000	5.600	0	6715246	N.D.	53.959 #
22)	L5 AR-1248-2	6.748	5.864	16159070	19887258	65.973	116.827 #
23)	L5 AR-1248-3	0.000	5.864	0	19887258	N.D.	111.200 #
24)	L5 AR-1248-4	0.000	6.021	0	3552773	N.D.	16.322 #
25)	L5 AR-1248-5	0.000	6.514	0	8036941	N.D.	36.042 #
26)	L6 AR-1254-1	0.000	6.514	0	8036941	N.D.	22.093 #
29)	L6 AR-1254-4	0.000	7.283	0	2097457	N.D.	5.868 #
31)	L7 AR-1260-1	0.000	7.237	0	6755786	N.D.	22.051 #
32)	L7 AR-1260-2	0.000	7.382	0	1961394	N.D.	4.967 #
33)	L7 AR-1260-3	0.000	7.601	0	775800	N.D.	2.265 #
38)	L8 AR-1262-3	0.000	8.556	0	1626709	N.D.	4.222 #
39)	L8 AR-1262-4	0.000	8.612	0	682689	N.D.	0.927 #
41)	L9 AR-1268-1	0.000	8.556	0	1626709	N.D.	1.353 #
42)	L9 AR-1268-2	0.000	8.612	0	682689	N.D.	0.613 #
43)	L9 AR-1268-3	0.000	8.843	0	1765644	N.D.	1.898 #
45)	L9 AR-1268-5	0.000	9.457	0	1416535	N.D.	0.469 #
-----							

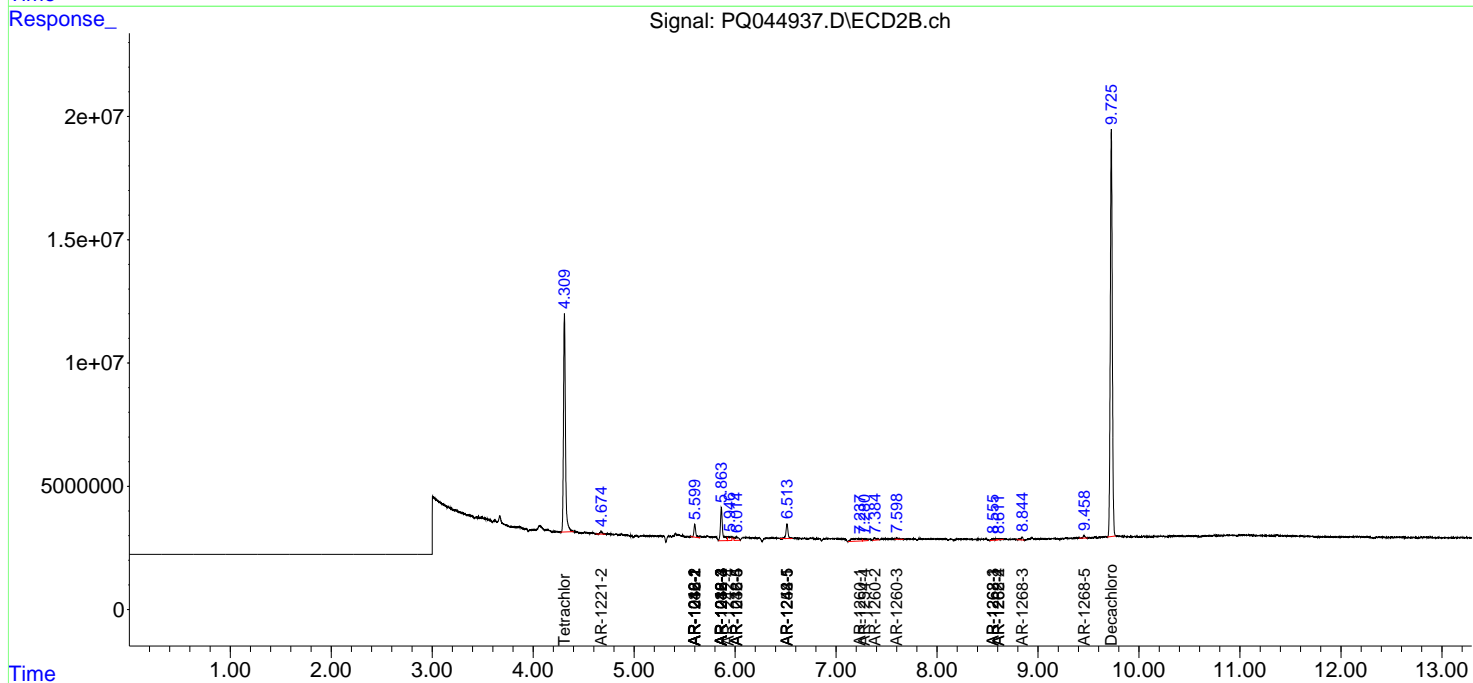
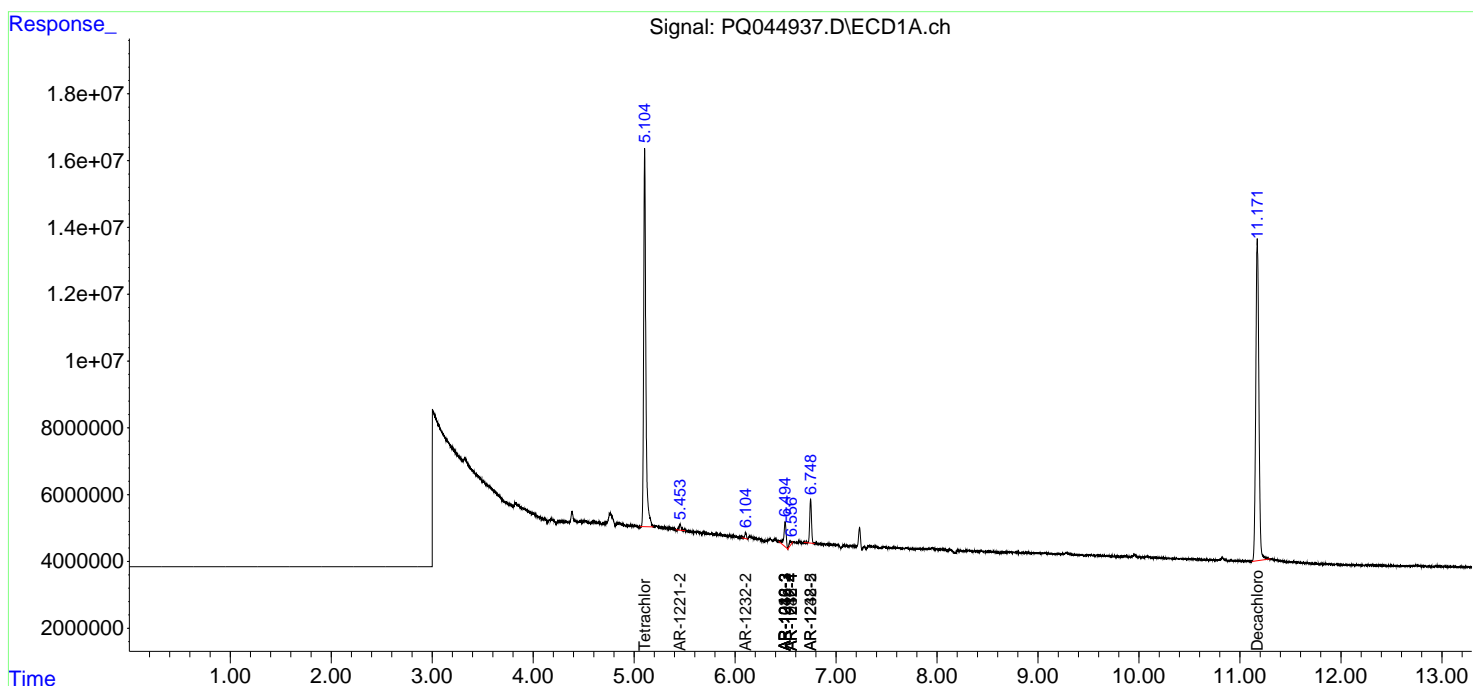
(f)=RT Delta > 1/2 Window (#)=Amounts differ by > 25% (m)=manual int.

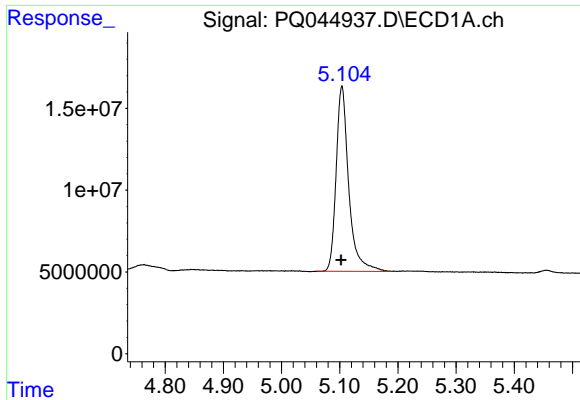
Data Path : Z:\pestpcbsrv\HPCHEM1\ECD\_Q\Data\PQ111119\  
 Data File : PQ044937.D  
 Signal(s) : Signal #1: ECD1A.ch Signal #2: ECD2B.ch  
 Acq On : 11 Nov 2019 15:00  
 Operator : SM\AJ  
 Sample : K5719-19  
 Misc :  
 ALS Vial : 27 Sample Multiplier: 1

Instrument :  
 ECD\_Q  
 ClientSampleId :  
 F2J16

Integration File signal 1: autoint1.e  
 Integration File signal 2: autoint2.e  
 Quant Time: Nov 11 17:20:55 2019  
 Quant Method : Z:\pestpcbsrv\HPCHEM1\ECD\_Q\Method\PQ110719CLP.M  
 Quant Title : GC EXTRACTABLES  
 QLast Update : Fri Nov 08 03:35:55 2019  
 Response via : Initial Calibration  
 Integrator: ChemStation

Volume Inj. : 1 µl  
 Signal #1 Phase : ZB MR1 Signal #2 Phase: ZB MR2  
 Signal #1 Info : 30Mx0.32mmx 0.5µm Signal #2 Info : 30M x 0.32mm x 0.25µm

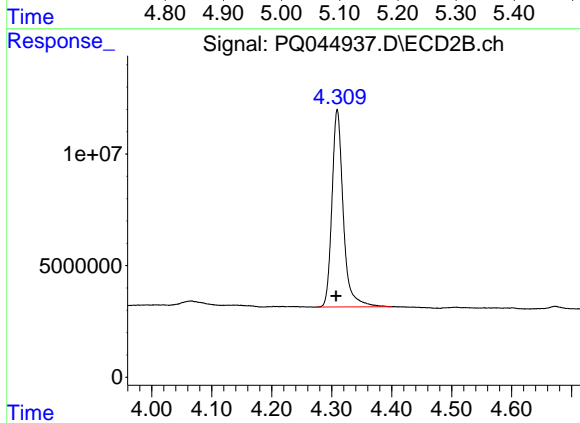




#1 Tetrachloro-m-xylene

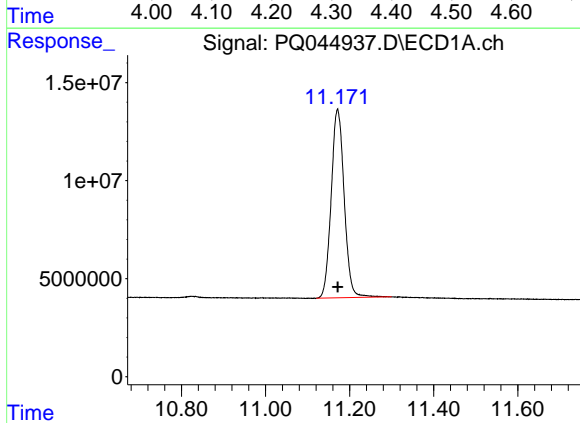
R.T.: 5.104 min  
 Delta R.T.: 0.002 min  
 Response: 170107544  
 Conc: 21.43 ng/ml

Instrument :  
 ECD\_Q  
 ClientSampled :  
 F2J16



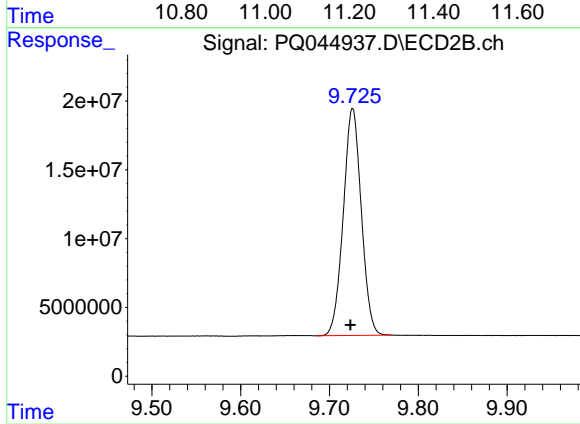
#1 Tetrachloro-m-xylene

R.T.: 4.309 min  
 Delta R.T.: 0.002 min  
 Response: 116039465  
 Conc: 24.61 ng/ml



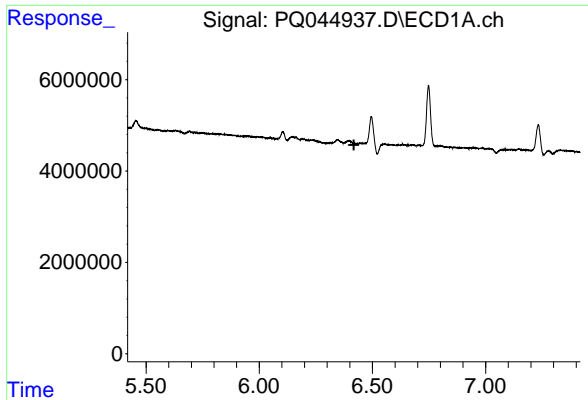
#2 Decachlorobiphenyl

R.T.: 11.171 min  
 Delta R.T.: 0.000 min  
 Response: 206391593  
 Conc: 29.80 ng/ml



#2 Decachlorobiphenyl

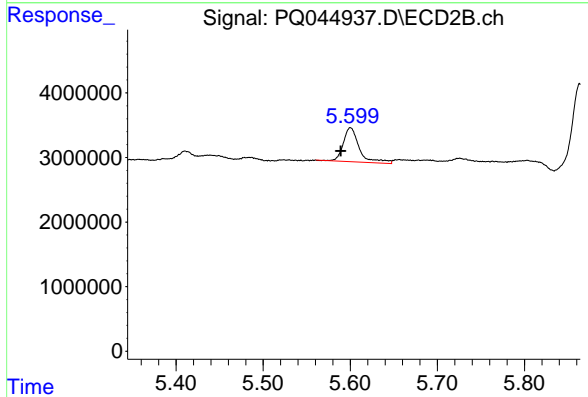
R.T.: 9.726 min  
 Delta R.T.: 0.002 min  
 Response: 232936571  
 Conc: 34.33 ng/ml



#3 AR-1016-1

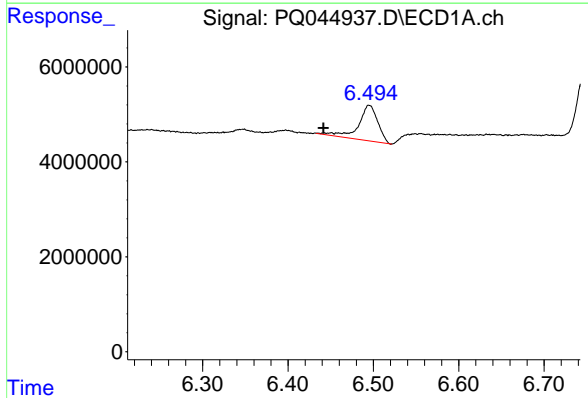
R.T.: 0.000 min  
 Exp R.T.: 6.418 min  
 Response: 0  
 Conc: N.D.

Instrument :  
 ECD\_Q  
 ClientSampleId :  
 F2J16



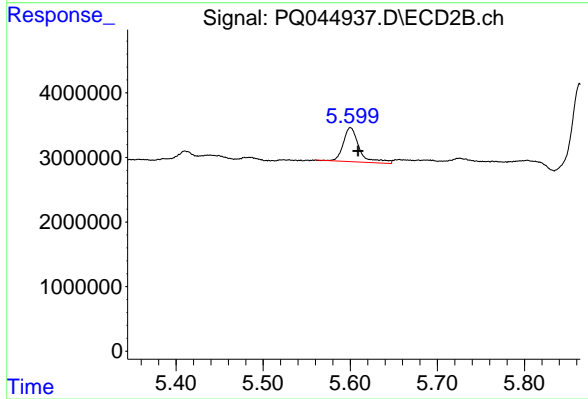
#3 AR-1016-1

R.T.: 5.600 min  
 Delta R.T.: 0.011 min  
 Response: 6715246  
 Conc: 36.46 ng/ml



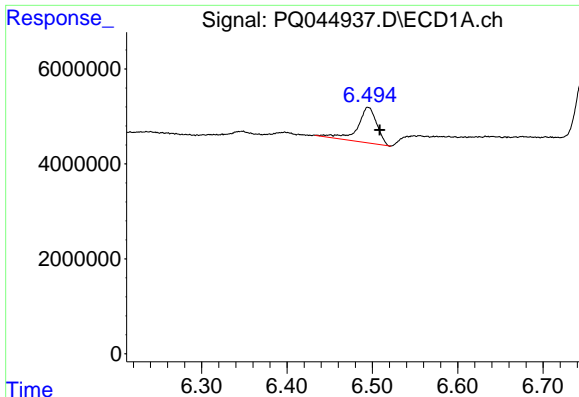
#4 AR-1016-2

R.T.: 6.495 min  
 Delta R.T.: 0.054 min  
 Response: 11862245  
 Conc: 31.37 ng/ml



#4 AR-1016-2

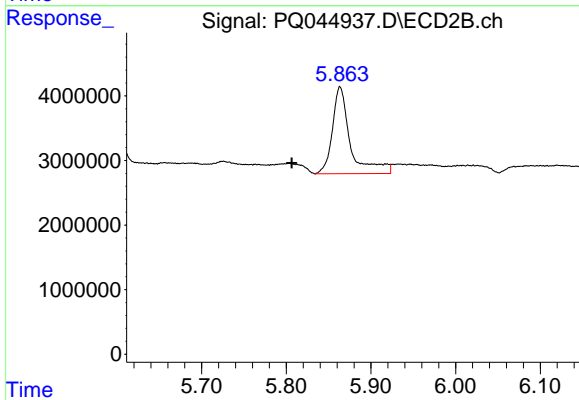
R.T.: 5.600 min  
 Delta R.T.: -0.009 min  
 Response: 6715246  
 Conc: 25.41 ng/ml



#5 AR-1016-3

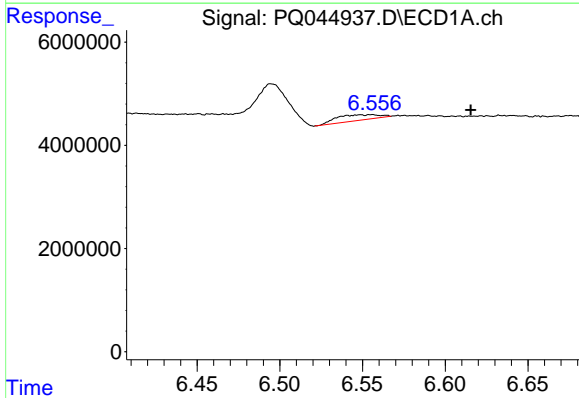
R.T.: 6.495 min  
 Delta R.T.: -0.013 min  
 Response: 11862245  
 Conc: 51.09 ng/ml

Instrument :  
 ECD\_Q  
 ClientSampled :  
 F2J16



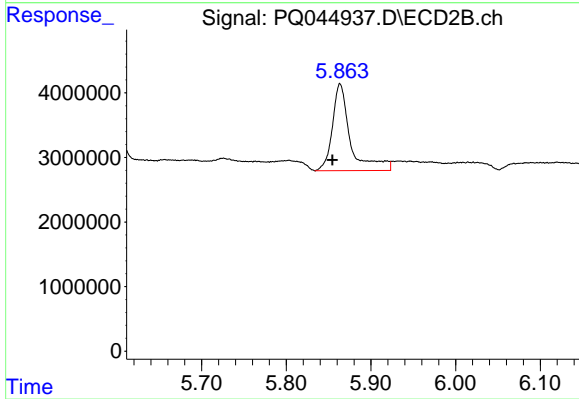
#5 AR-1016-3

R.T.: 5.864 min  
 Delta R.T.: 0.057 min  
 Response: 19887258  
 Conc: 154.10 ng/ml



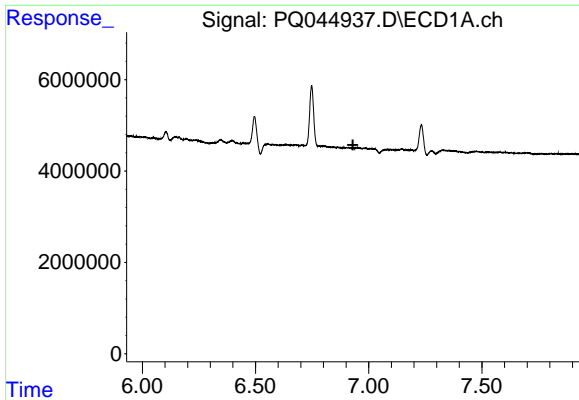
#6 AR-1016-4

R.T.: 6.556 min  
 Delta R.T.: -0.060 min  
 Response: 1967319  
 Conc: 10.39 ng/ml



#6 AR-1016-4

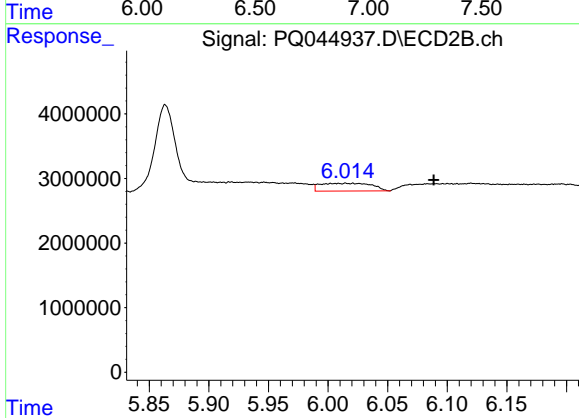
R.T.: 5.864 min  
 Delta R.T.: 0.009 min  
 Response: 19887258  
 Conc: 183.14 ng/ml



#7 AR-1016-5

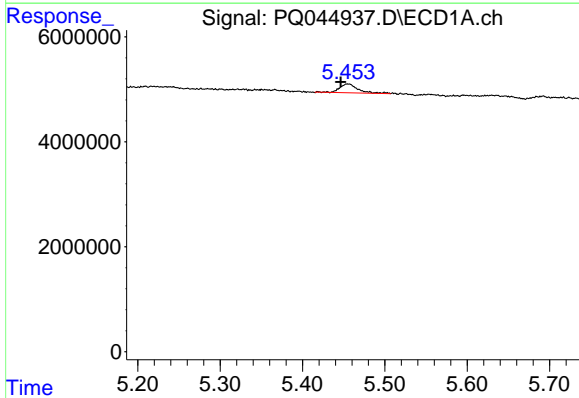
R.T.: 0.000 min  
 Exp R.T.: 6.930 min  
 Response: 0  
 Conc: N.D.

Instrument :  
 ECD\_Q  
 ClientSampleId :  
 F2J16



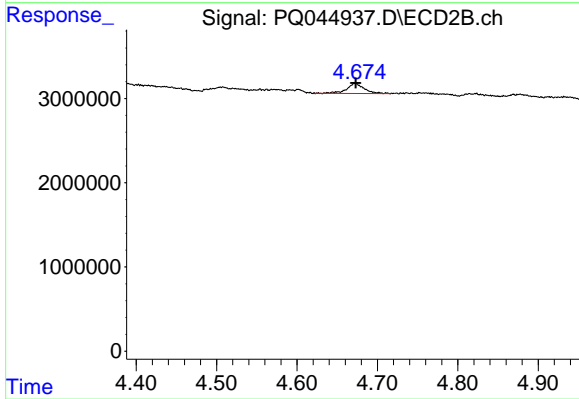
#7 AR-1016-5

R.T.: 6.021 min  
 Delta R.T.: -0.068 min  
 Response: 3552773  
 Conc: 23.25 ng/ml



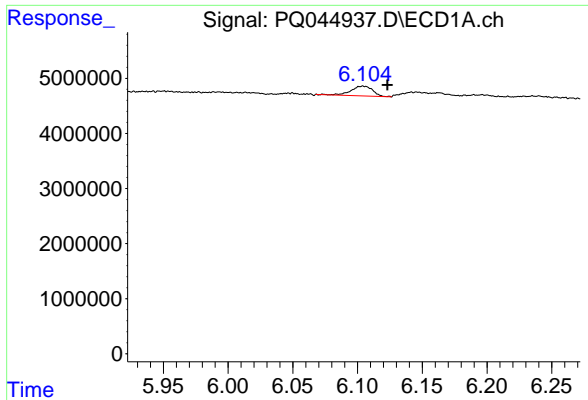
#9 AR-1221-2

R.T.: 5.455 min  
 Delta R.T.: 0.009 min  
 Response: 2588333  
 Conc: 44.08 ng/ml



#9 AR-1221-2

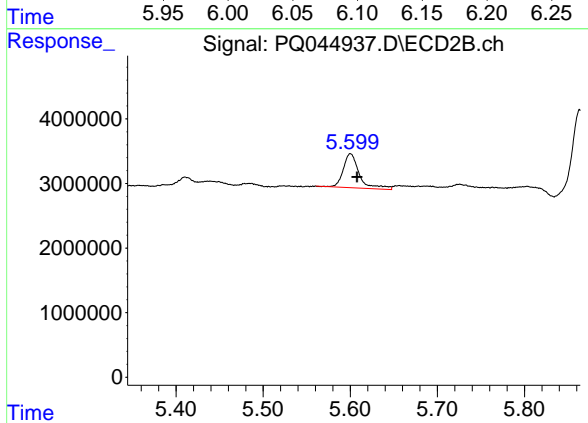
R.T.: 4.672 min  
 Delta R.T.: 0.000 min  
 Response: 1841050  
 Conc: 46.63 ng/ml



#12 AR-1232-2

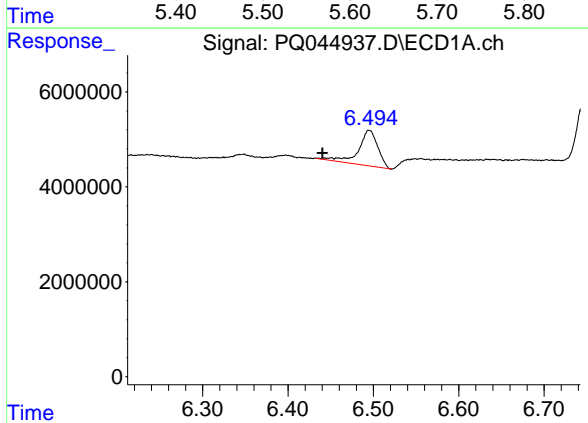
R.T.: 6.104 min  
 Delta R.T.: -0.019 min  
 Response: 2058046  
 Conc: 22.95 ng/ml

Instrument :  
 ECD\_Q  
 ClientSampleId :  
 F2J16



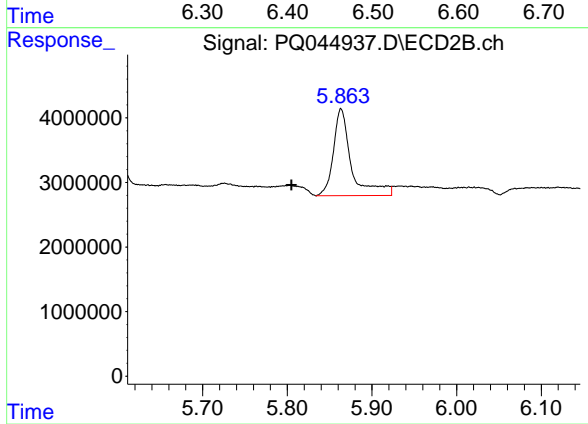
#12 AR-1232-2

R.T.: 5.600 min  
 Delta R.T.: -0.008 min  
 Response: 6715246  
 Conc: 53.99 ng/ml



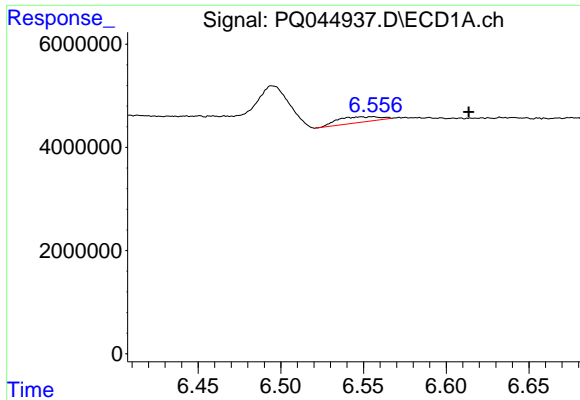
#13 AR-1232-3

R.T.: 6.495 min  
 Delta R.T.: 0.055 min  
 Response: 11862245  
 Conc: 67.18 ng/ml



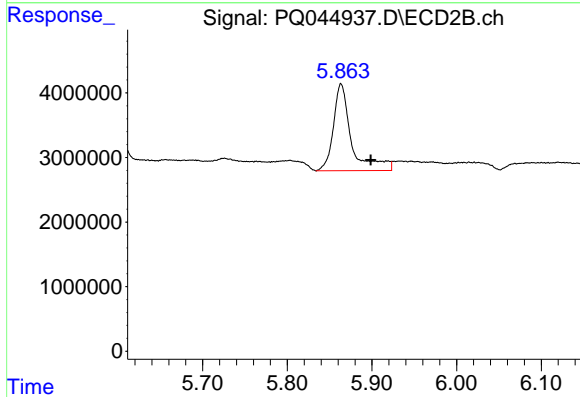
#13 AR-1232-3

R.T.: 5.864 min  
 Delta R.T.: 0.059 min  
 Response: 19887258  
 Conc: 335.82 ng/ml

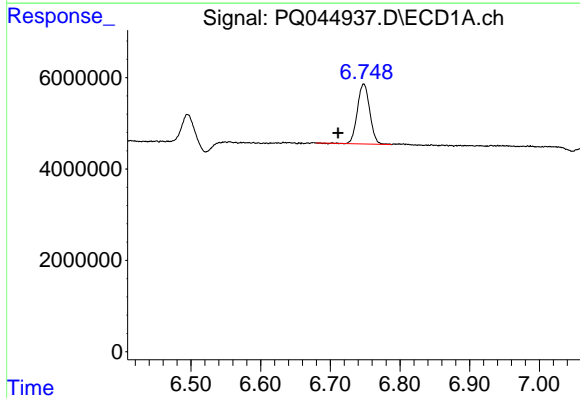


#14 AR-1232-4  
 R.T.: 6.556 min  
 Delta R.T.: -0.058 min  
 Response: 1967319  
 Conc: 22.24 ng/ml

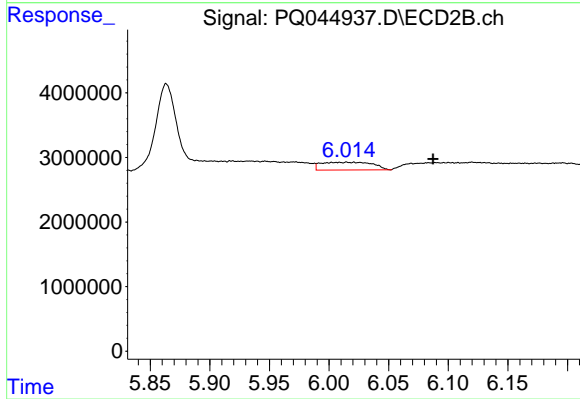
Instrument :  
 ECD\_Q  
 ClientSampleId :  
 F2J16



#14 AR-1232-4  
 R.T.: 5.864 min  
 Delta R.T.: -0.035 min  
 Response: 19887258  
 Conc: 330.82 ng/ml

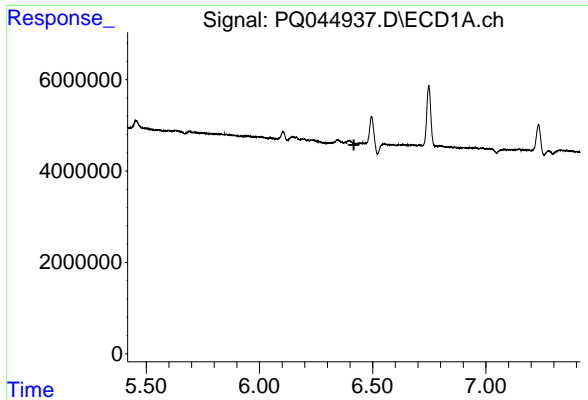


#15 AR-1232-5  
 R.T.: 6.748 min  
 Delta R.T.: 0.037 min  
 Response: 16159070  
 Conc: 243.58 ng/ml



#15 AR-1232-5  
 R.T.: 6.021 min  
 Delta R.T.: -0.067 min  
 Response: 3552773  
 Conc: 48.78 ng/ml

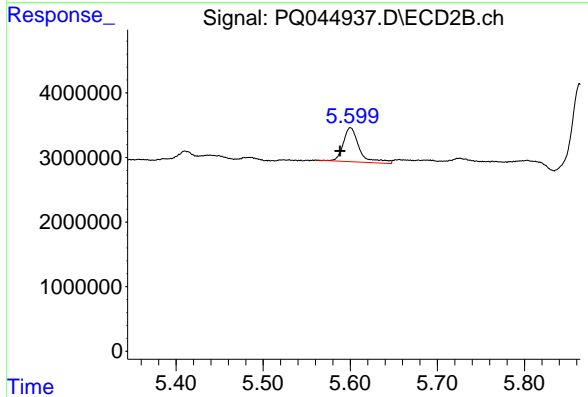




#16 AR-1242-1

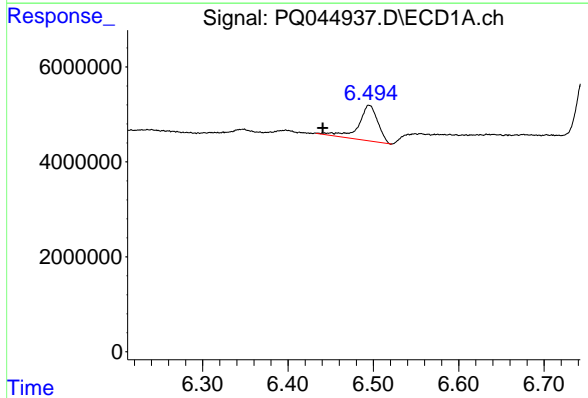
R.T.: 0.000 min  
 Exp R.T.: 6.417 min  
 Response: 0  
 Conc: N.D.

Instrument :  
 ECD\_Q  
 ClientSampleId :  
 F2J16



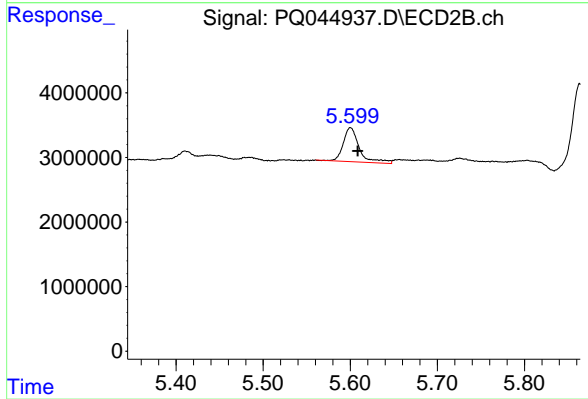
#16 AR-1242-1

R.T.: 5.600 min  
 Delta R.T.: 0.012 min  
 Response: 6715246  
 Conc: 42.83 ng/ml



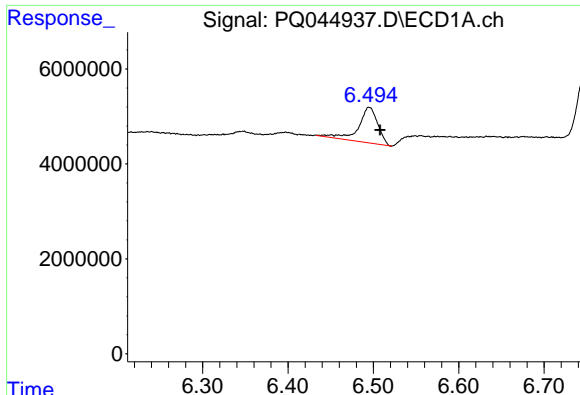
#17 AR-1242-2

R.T.: 6.495 min  
 Delta R.T.: 0.054 min  
 Response: 11862245  
 Conc: 36.89 ng/ml



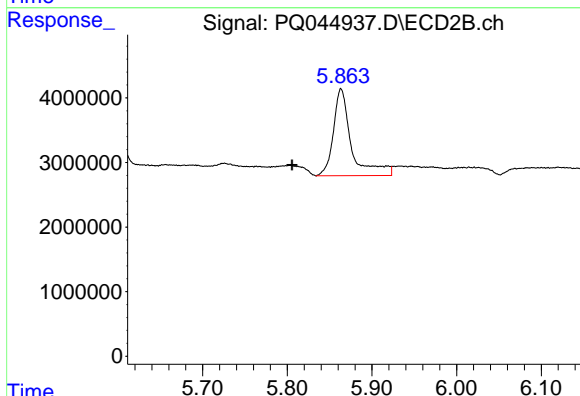
#17 AR-1242-2

R.T.: 5.600 min  
 Delta R.T.: -0.008 min  
 Response: 6715246  
 Conc: 30.01 ng/ml

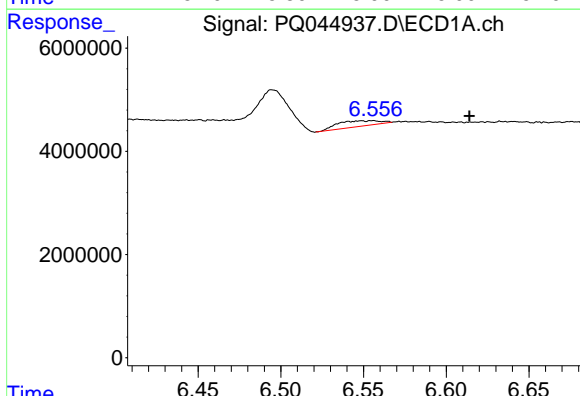


#18 AR-1242-3  
 R.T.: 6.495 min  
 Delta R.T.: -0.013 min  
 Response: 11862245  
 Conc: 59.79 ng/ml

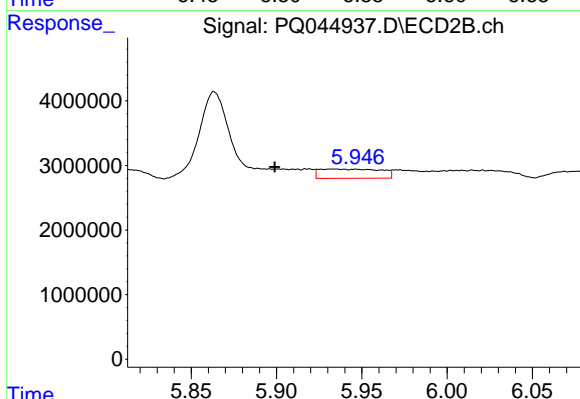
Instrument :  
 ECD\_Q  
 ClientSampled :  
 F2J16



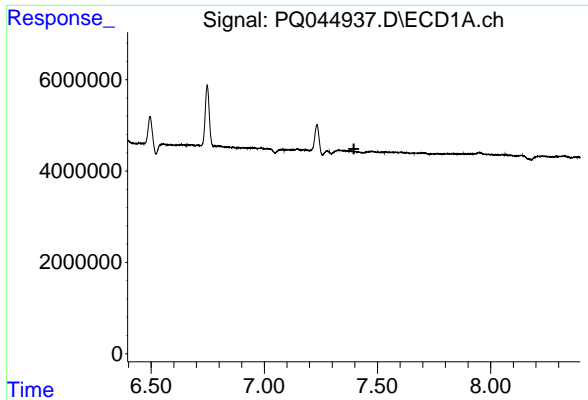
#18 AR-1242-3  
 R.T.: 5.864 min  
 Delta R.T.: 0.058 min  
 Response: 19887258  
 Conc: 178.93 ng/ml



#19 AR-1242-4  
 R.T.: 6.556 min  
 Delta R.T.: -0.059 min  
 Response: 1967319  
 Conc: 12.18 ng/ml



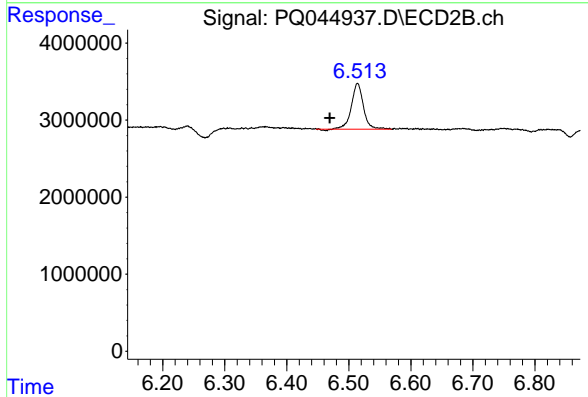
#19 AR-1242-4  
 R.T.: 5.934 min  
 Delta R.T.: 0.035 min  
 Response: 3578368  
 Conc: 30.01 ng/ml



#20 AR-1242-5

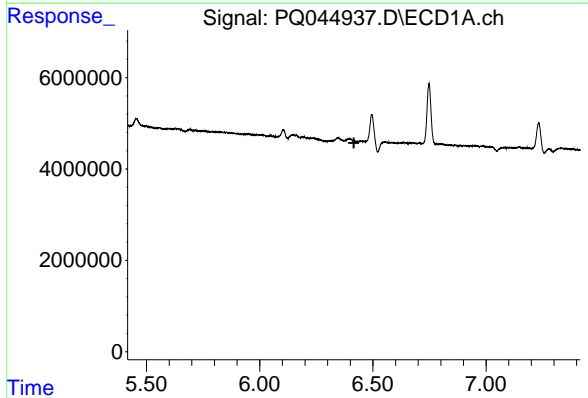
R.T.: 0.000 min  
 Exp R.T. : 7.396 min  
 Response: 0  
 Conc: N.D.

Instrument :  
 ECD\_Q  
 ClientSampled :  
 F2J16



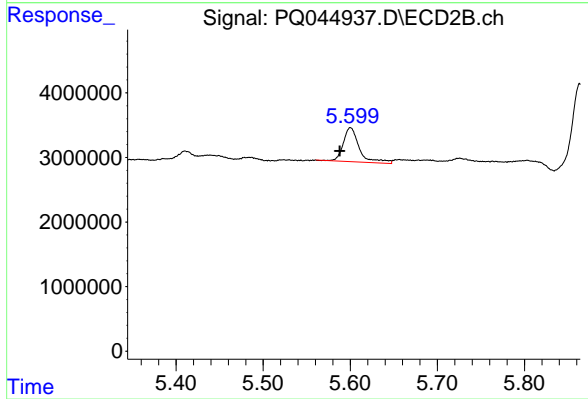
#20 AR-1242-5

R.T.: 6.514 min  
 Delta R.T.: 0.045 min  
 Response: 8036941  
 Conc: 48.95 ng/ml



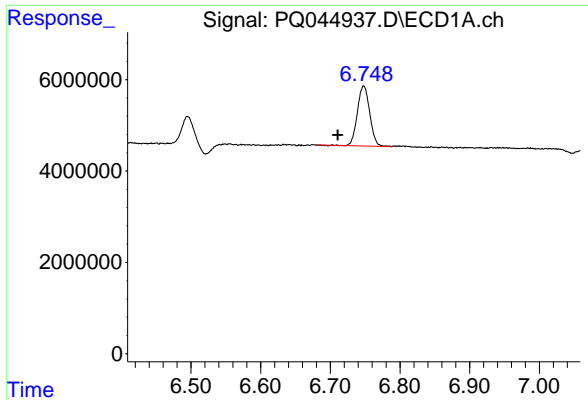
#21 AR-1248-1

R.T.: 0.000 min  
 Exp R.T. : 6.416 min  
 Response: 0  
 Conc: N.D.



#21 AR-1248-1

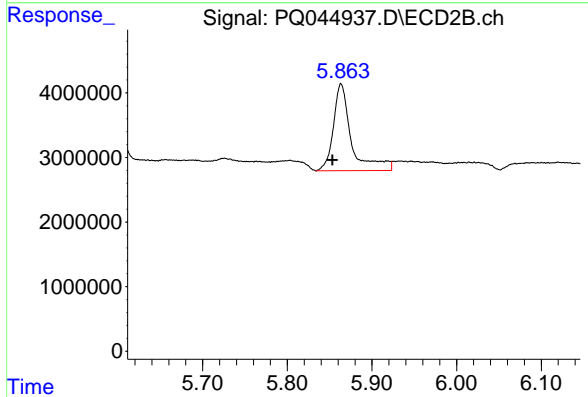
R.T.: 5.600 min  
 Delta R.T.: 0.013 min  
 Response: 6715246  
 Conc: 53.96 ng/ml



#22 AR-1248-2

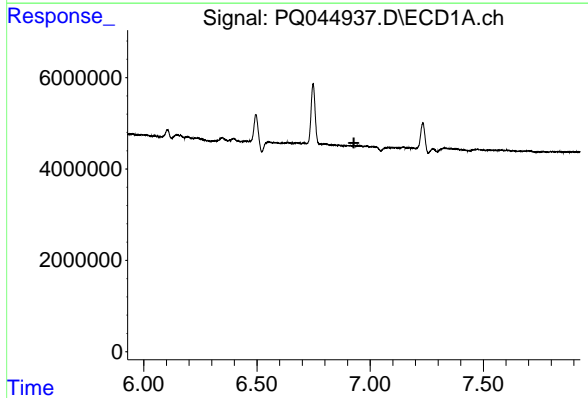
R.T.: 6.748 min  
 Delta R.T.: 0.037 min  
 Response: 16159070  
 Conc: 65.97 ng/ml

Instrument :  
 ECD\_Q  
 ClientSampleId :  
 F2J16



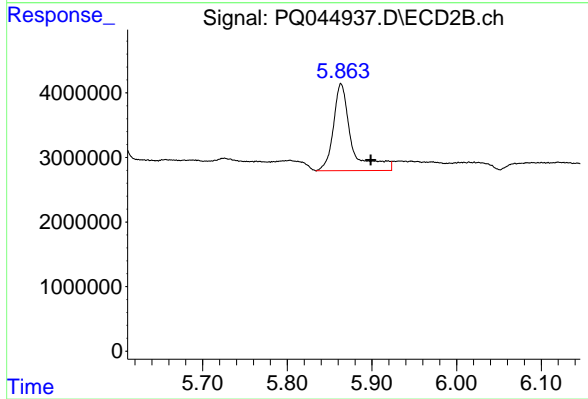
#22 AR-1248-2

R.T.: 5.864 min  
 Delta R.T.: 0.010 min  
 Response: 19887258  
 Conc: 116.83 ng/ml



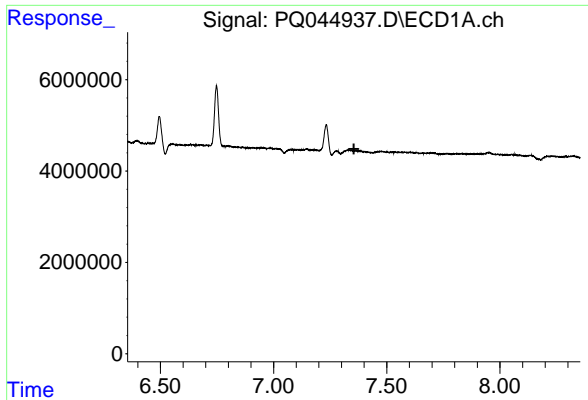
#23 AR-1248-3

R.T.: 0.000 min  
 Exp R.T. : 6.928 min  
 Response: 0  
 Conc: N.D.



#23 AR-1248-3

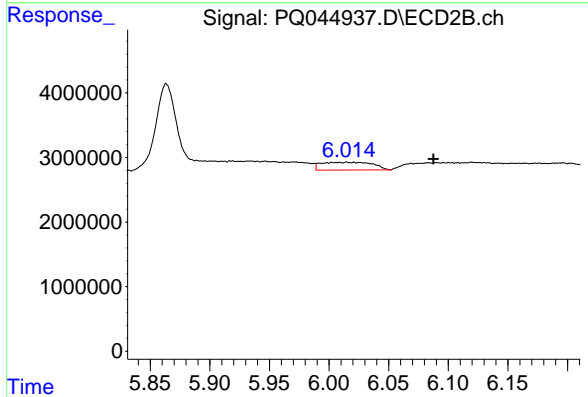
R.T.: 5.864 min  
 Delta R.T.: -0.035 min  
 Response: 19887258  
 Conc: 111.20 ng/ml



#24 AR-1248-4

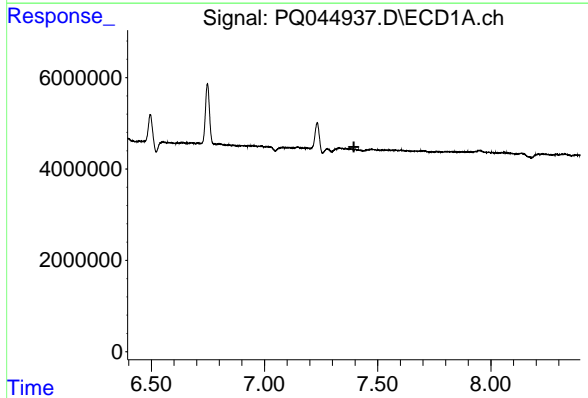
R.T.: 0.000 min  
 Exp R.T. : 7.355 min  
 Response: 0  
 Conc: N.D.

Instrument :  
 ECD\_Q  
 ClientSampleId :  
 F2J16



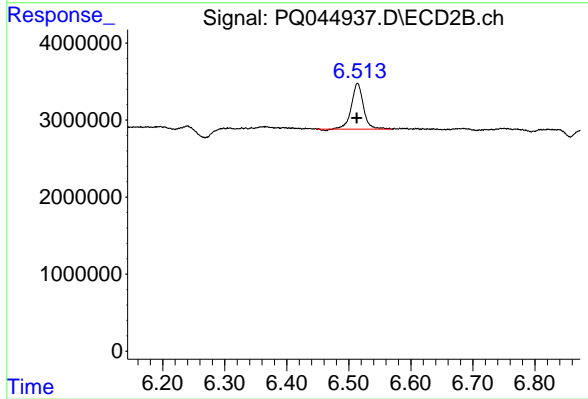
#24 AR-1248-4

R.T.: 6.021 min  
 Delta R.T.: -0.067 min  
 Response: 3552773  
 Conc: 16.32 ng/ml



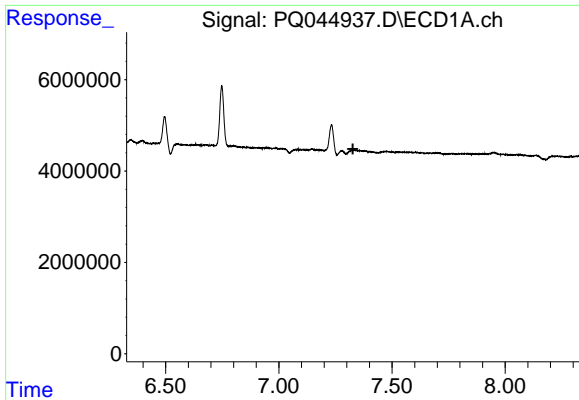
#25 AR-1248-5

R.T.: 0.000 min  
 Exp R.T. : 7.395 min  
 Response: 0  
 Conc: N.D.



#25 AR-1248-5

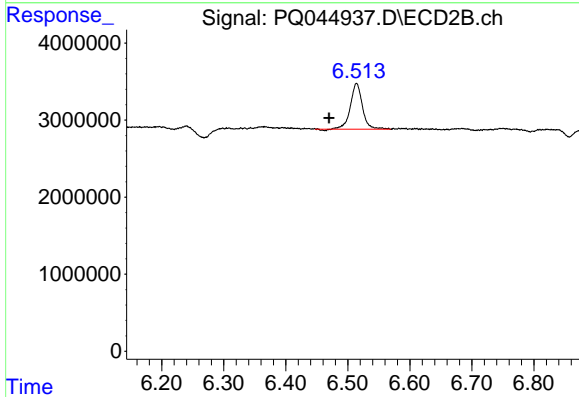
R.T.: 6.514 min  
 Delta R.T.: 0.001 min  
 Response: 8036941  
 Conc: 36.04 ng/ml



#26 AR-1254-1

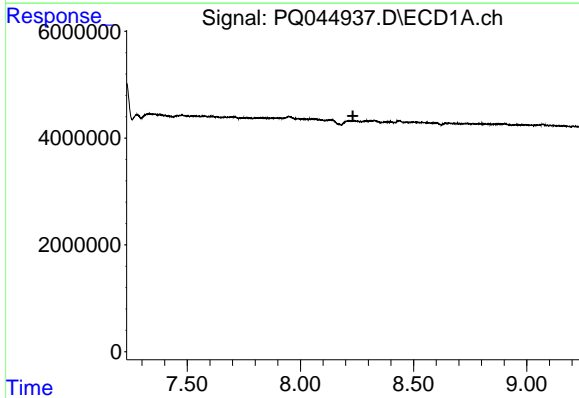
R.T.: 0.000 min  
 Exp R.T.: 7.327 min  
 Response: 0  
 Conc: N.D.

Instrument :  
 ECD\_Q  
 ClientSampleId :  
 F2J16



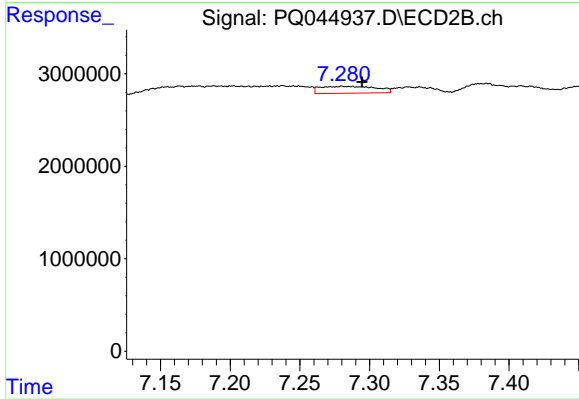
#26 AR-1254-1

R.T.: 6.514 min  
 Delta R.T.: 0.044 min  
 Response: 8036941  
 Conc: 22.09 ng/ml



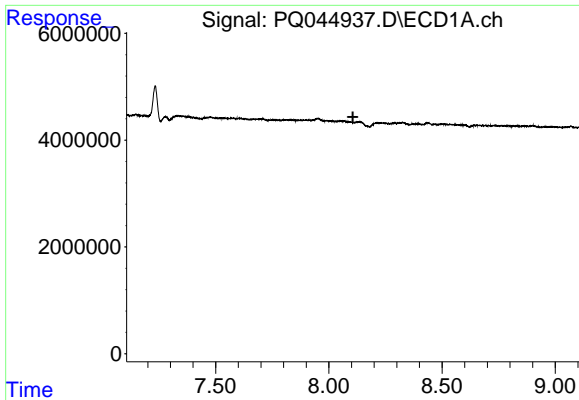
#29 AR-1254-4

R.T.: 0.000 min  
 Exp R.T.: 8.232 min  
 Response: 0  
 Conc: N.D.



#29 AR-1254-4

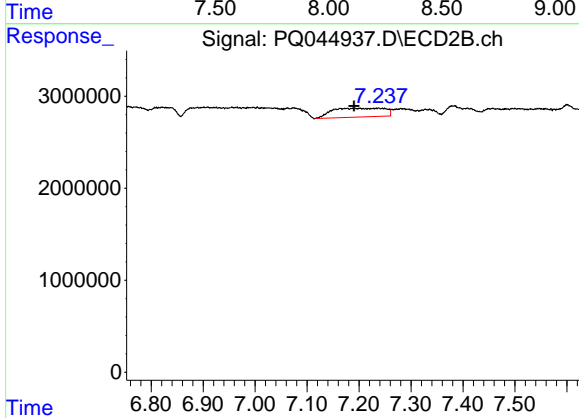
R.T.: 7.283 min  
 Delta R.T.: -0.012 min  
 Response: 2097457  
 Conc: 5.87 ng/ml



#31 AR-1260-1

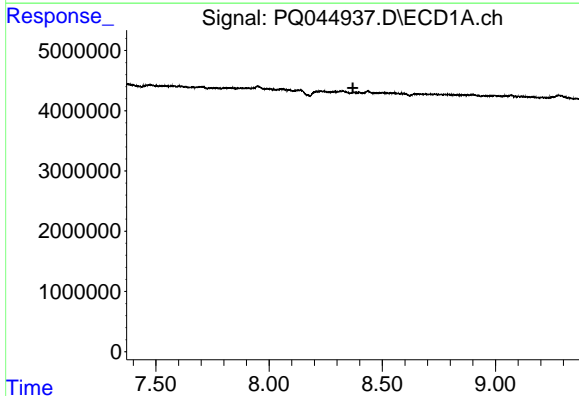
R.T.: 0.000 min  
 Exp R.T. : 8.106 min  
 Response: 0  
 Conc: N.D.

Instrument :  
 ECD\_Q  
 ClientSampleId :  
 F2J16



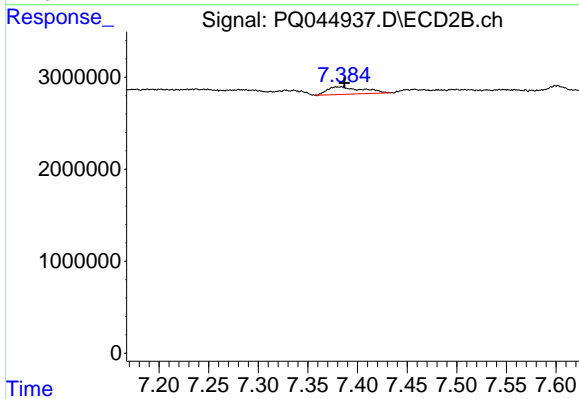
#31 AR-1260-1

R.T.: 7.237 min  
 Delta R.T.: 0.046 min  
 Response: 6755786  
 Conc: 22.05 ng/ml



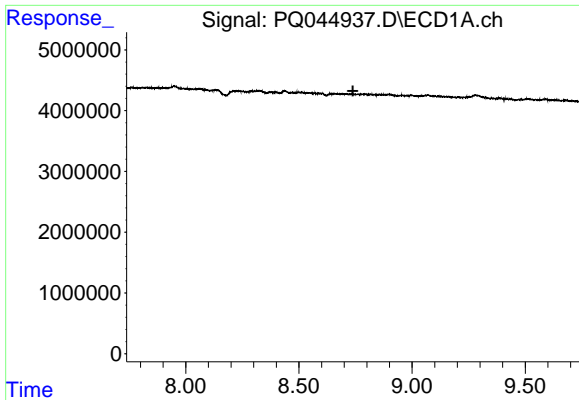
#32 AR-1260-2

R.T.: 0.000 min  
 Exp R.T. : 8.370 min  
 Response: 0  
 Conc: N.D.



#32 AR-1260-2

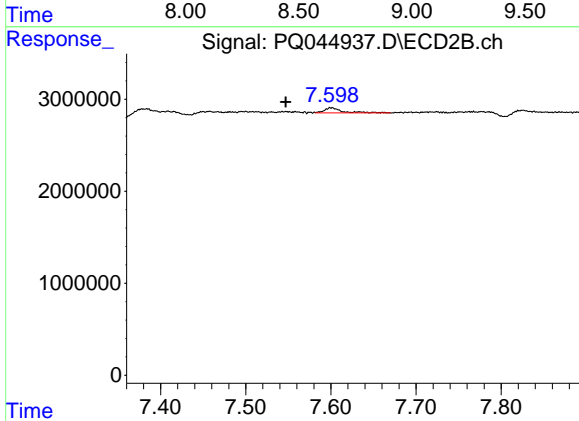
R.T.: 7.382 min  
 Delta R.T.: -0.005 min  
 Response: 1961394  
 Conc: 4.97 ng/ml



#33 AR-1260-3

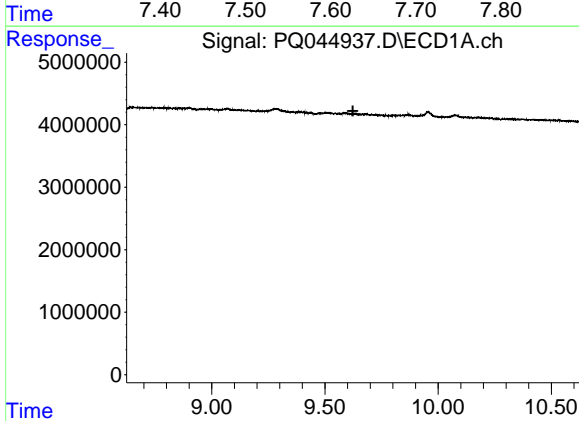
R.T.: 0.000 min  
 Exp R.T. : 8.739 min  
 Response: 0  
 Conc: N.D.

Instrument :  
 ECD\_Q  
 ClientSampled :  
 F2J16



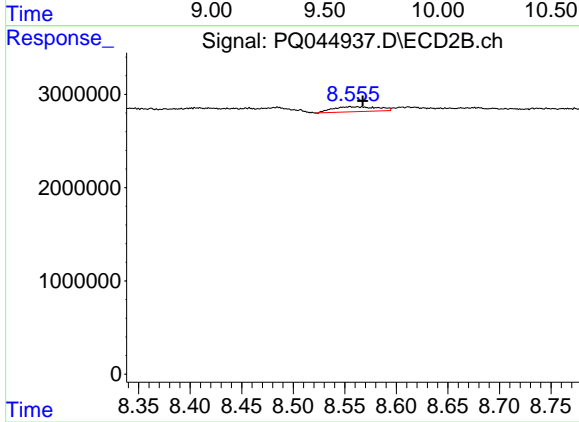
#33 AR-1260-3

R.T.: 7.601 min  
 Delta R.T.: 0.054 min  
 Response: 775800  
 Conc: 2.26 ng/ml



#38 AR-1262-3

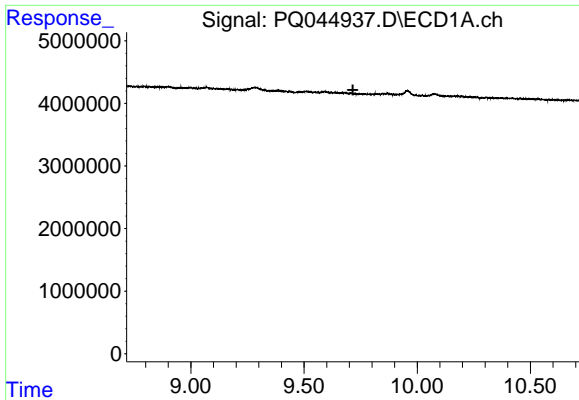
R.T.: 0.000 min  
 Exp R.T. : 9.623 min  
 Response: 0  
 Conc: N.D.



#38 AR-1262-3

R.T.: 8.556 min  
 Delta R.T.: -0.012 min  
 Response: 1626709  
 Conc: 4.22 ng/ml

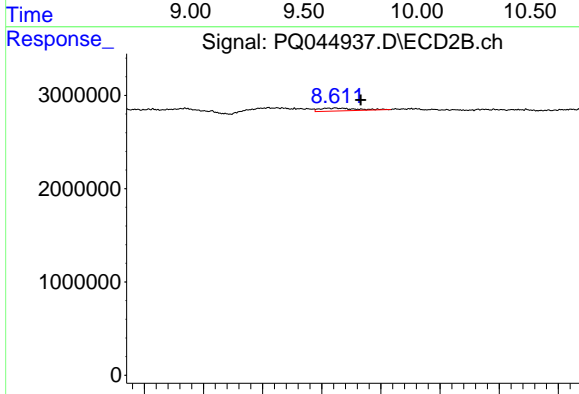




#39 AR-1262-4

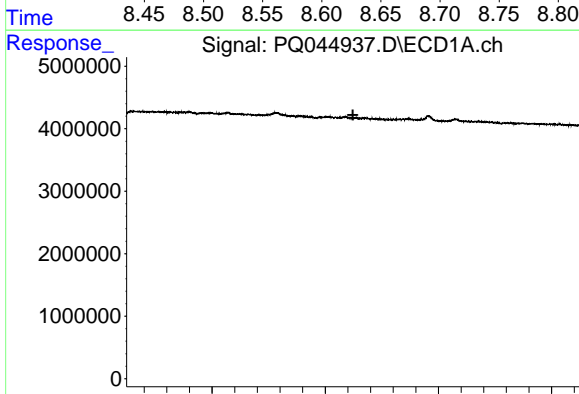
R.T.: 0.000 min  
 Exp R.T.: 9.716 min  
 Response: 0  
 Conc: N.D.

Instrument :  
 ECD\_Q  
 ClientSampled :  
 F2J16



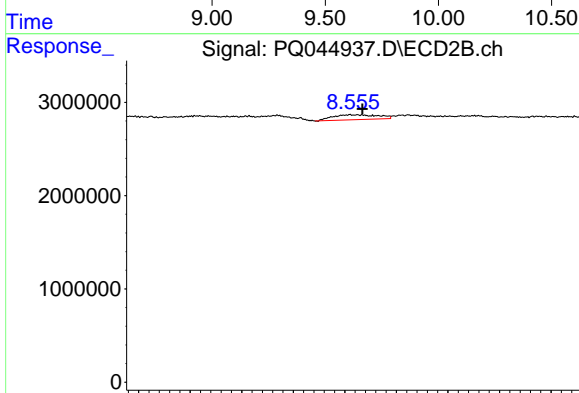
#39 AR-1262-4

R.T.: 8.612 min  
 Delta R.T.: -0.021 min  
 Response: 682689  
 Conc: 0.93 ng/ml



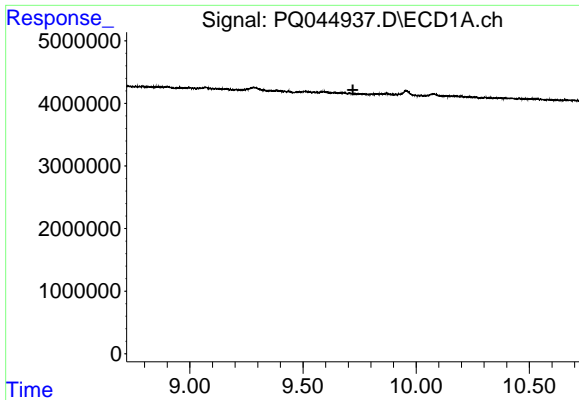
#41 AR-1268-1

R.T.: 0.000 min  
 Exp R.T.: 9.622 min  
 Response: 0  
 Conc: N.D.



#41 AR-1268-1

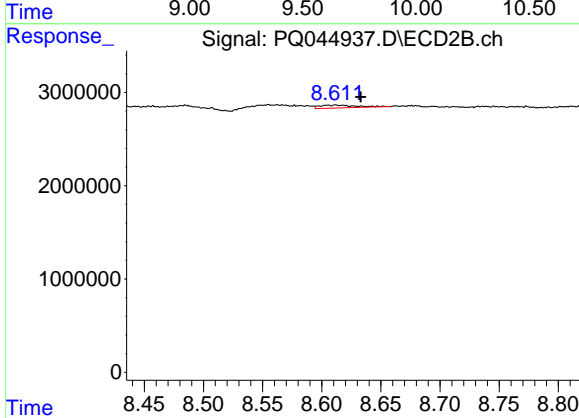
R.T.: 8.556 min  
 Delta R.T.: -0.011 min  
 Response: 1626709  
 Conc: 1.35 ng/ml



#42 AR-1268-2

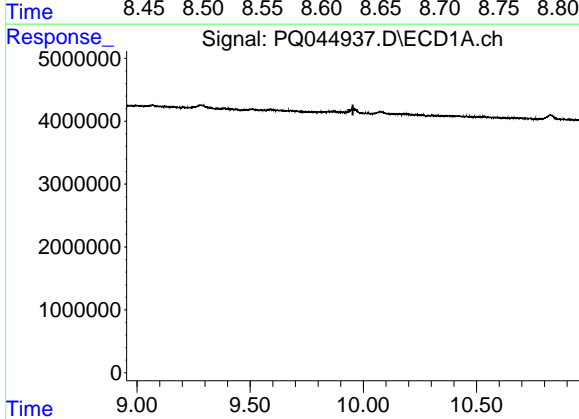
R.T.: 0.000 min  
 Exp R.T.: 9.720 min  
 Response: 0  
 Conc: N.D.

Instrument :  
 ECD\_Q  
 ClientSampled :  
 F2J16



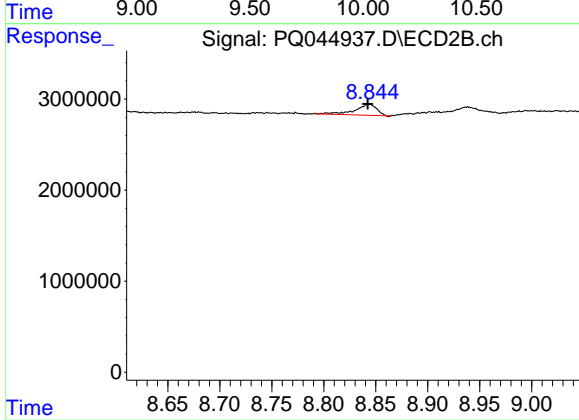
#42 AR-1268-2

R.T.: 8.612 min  
 Delta R.T.: -0.021 min  
 Response: 682689  
 Conc: 0.61 ng/ml



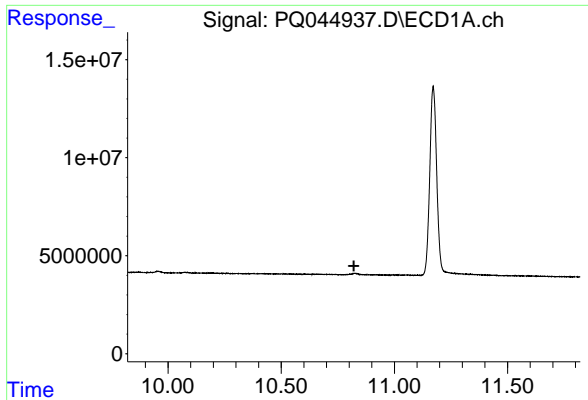
#43 AR-1268-3

R.T.: 0.000 min  
 Exp R.T.: 9.954 min  
 Response: 0  
 Conc: N.D.



#43 AR-1268-3

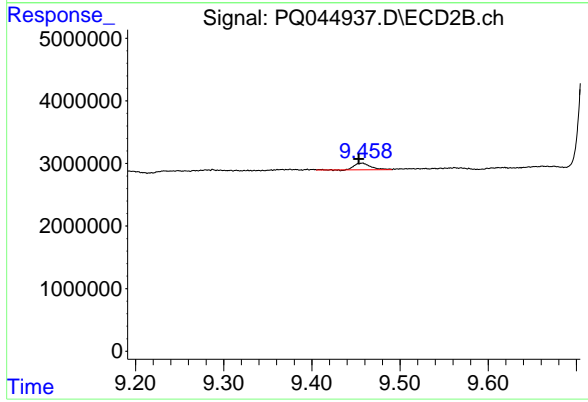
R.T.: 8.843 min  
 Delta R.T.: 0.001 min  
 Response: 1765644  
 Conc: 1.90 ng/ml



#45 AR-1268-5

R.T.: 0.000 min  
Exp R.T.: 10.821 min  
Response: 0  
Conc: N.D.

Instrument :  
ECD\_Q  
ClientSampleId :  
F2J16



#45 AR-1268-5

R.T.: 9.457 min  
Delta R.T.: 0.003 min  
Response: 1416535  
Conc: 0.47 ng/ml