

Data Path : Z:\pestpcbsrv\HPCHEM1\ECD_Q\Data\PQ111123\
 Data File : PQ063954.D
 Signal(s) : Signal #1: ECD1A.ch Signal #2: ECD2B.ch
 Acq On : 10 Nov 2023 21:54
 Operator : YP\AJ
 Sample : AR1248ICC200
 Misc :
 ALS Vial : 24 Sample Multiplier: 1

Instrument :
 ECD_Q
 ClientSampleId :

Integration File signal 1: autoint1.e
 Integration File signal 2: autoint2.e
 Quant Time: Nov 11 02:38:34 2023
 Quant Method : Z:\pestpcbsrv\HPCHEM1\ECD_Q\Method\PQ111123CLP.M
 Quant Title : GC EXTRACTABLES
 QLast Update : Sat Nov 11 02:37:41 2023
 Response via : Initial Calibration
 Integrator: ChemStation

Volume Inj. : 1 µl
 Signal #1 Phase : ZB MR1 Signal #2 Phase: ZB MR2
 Signal #1 Info : 30Mx0.32mmx 0.5µm Signal #2 Info : 30M x 0.32mm x 0.25µm

Compound	RT#1	RT#2	Resp#1	Resp#2	ng/ml	ng/ml

System Monitoring Compounds						
1) SA Tetrachlo...	3.459	2.777	48010236	48812240	11.139	10.600
2) SA Decachlor...	8.693	7.574	72636542	119.2E6	21.580	21.906
Target Compounds						
21) L5 AR-1248-1	4.574	3.787	20227546	19837421	230.888	234.554
22) L5 AR-1248-2	4.843	4.013	28970387	28920163	222.803	226.344
23) L5 AR-1248-3	5.034	4.050	34022585	27609870	220.567	226.161
24) L5 AR-1248-4	5.431	4.208	37566124	32833601	226.750	221.520
25) L5 AR-1248-5	5.467	4.585	36960049	32101829	226.226	221.834

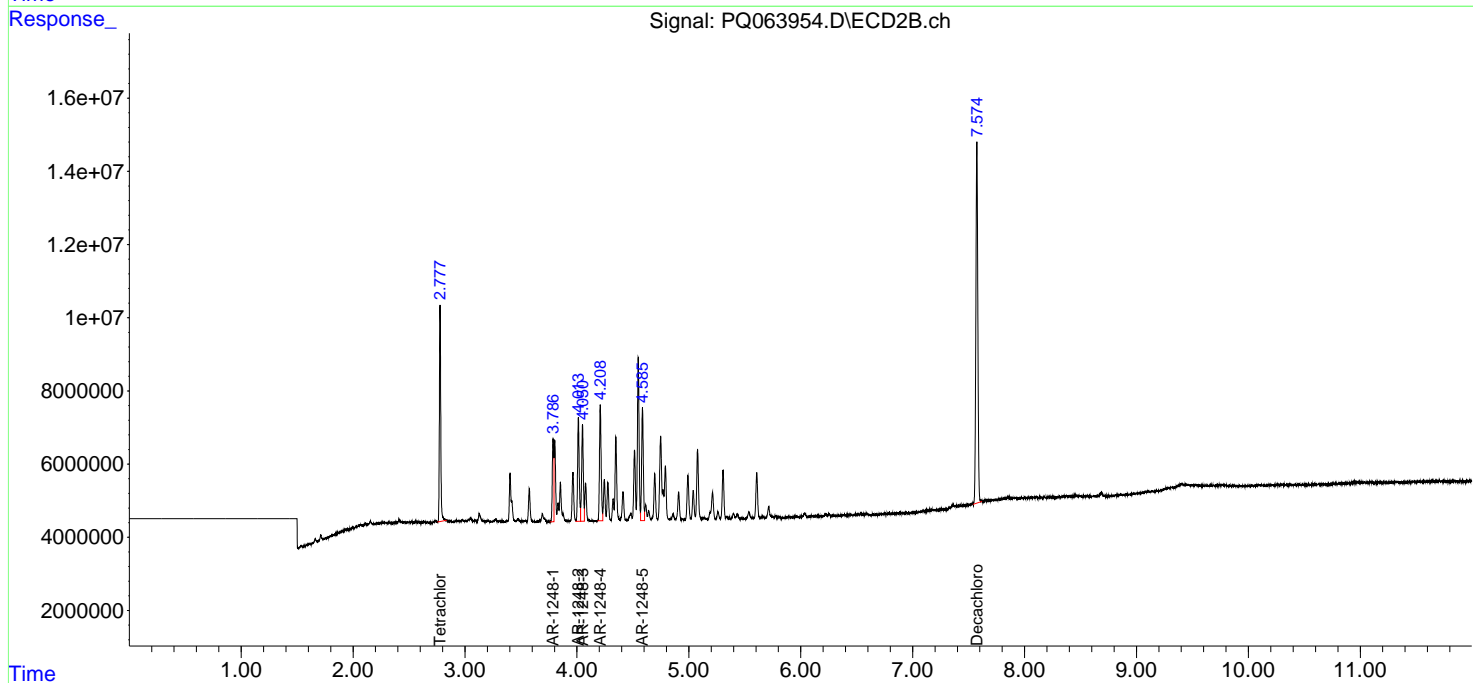
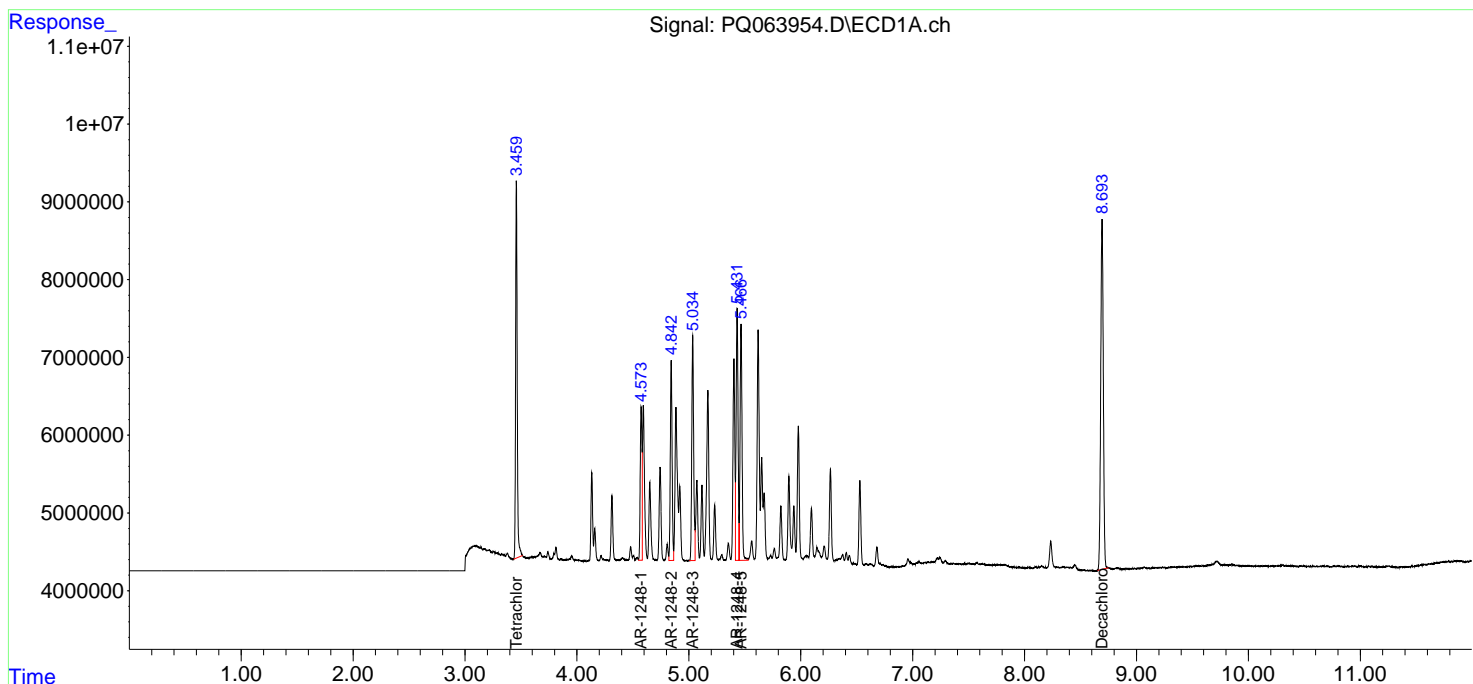
(f)=RT Delta > 1/2 Window (#)=Amounts differ by > 25% (m)=manual int.

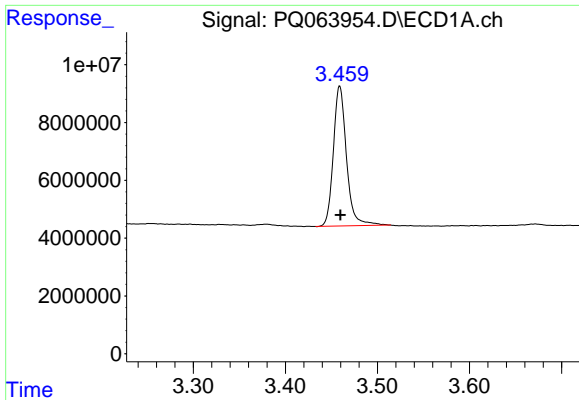
Data Path : Z:\pestpcbsrv\HPCHEM1\ECD_Q\Data\PQ111123\
 Data File : PQ063954.D
 Signal(s) : Signal #1: ECD1A.ch Signal #2: ECD2B.ch
 Acq On : 10 Nov 2023 21:54
 Operator : YP\AJ
 Sample : AR1248ICC200
 Misc :
 ALS Vial : 24 Sample Multiplier: 1

Instrument :
 ECD_Q
 ClientSampleId :

Integration File signal 1: autoint1.e
 Integration File signal 2: autoint2.e
 Quant Time: Nov 11 02:38:34 2023
 Quant Method : Z:\pestpcbsrv\HPCHEM1\ECD_Q\Method\PQ111123CLP.M
 Quant Title : GC EXTRACTABLES
 QLast Update : Sat Nov 11 02:37:41 2023
 Response via : Initial Calibration
 Integrator: ChemStation

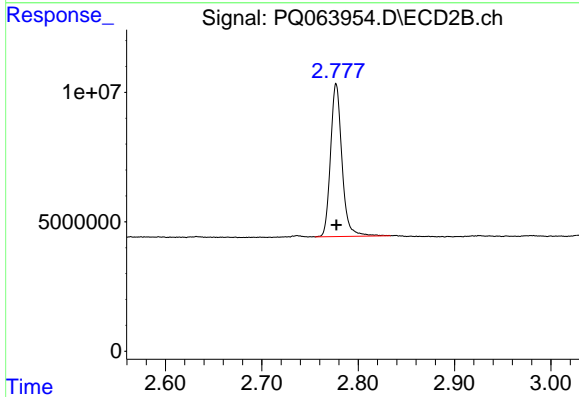
Volume Inj. : 1 µl
 Signal #1 Phase : ZB MR1 Signal #2 Phase: ZB MR2
 Signal #1 Info : 30Mx0.32mmx 0.5µm Signal #2 Info : 30M x 0.32mm x 0.25µm



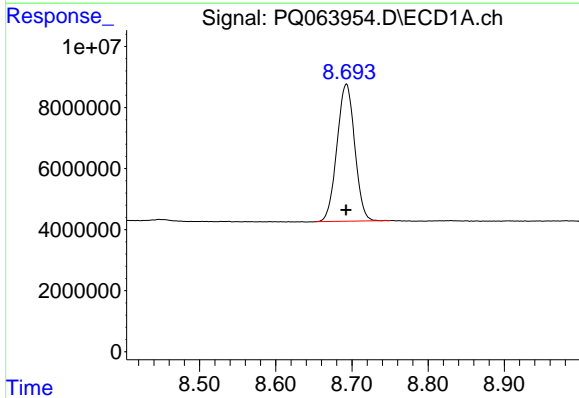


#1 Tetrachloro-m-xylene
 R.T.: 3.459 min
 Delta R.T.: 0.000 min
 Response: 48010236
 Conc: 11.14 ng/ml

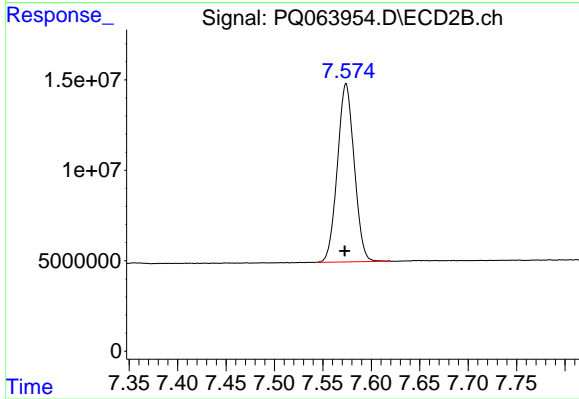
Instrument :
 ECD_Q
 ClientSampleId :



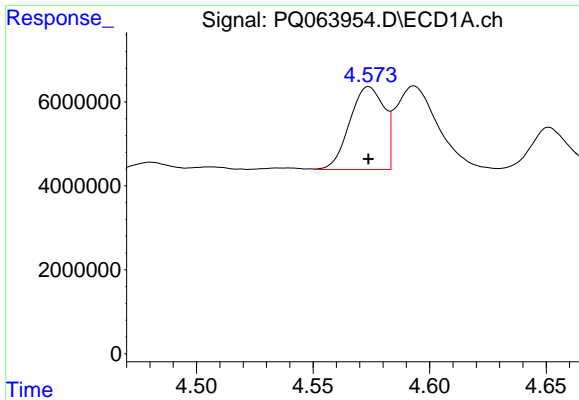
#1 Tetrachloro-m-xylene
 R.T.: 2.777 min
 Delta R.T.: 0.000 min
 Response: 48812240
 Conc: 10.60 ng/ml



#2 Decachlorobiphenyl
 R.T.: 8.693 min
 Delta R.T.: 0.000 min
 Response: 72636542
 Conc: 21.58 ng/ml



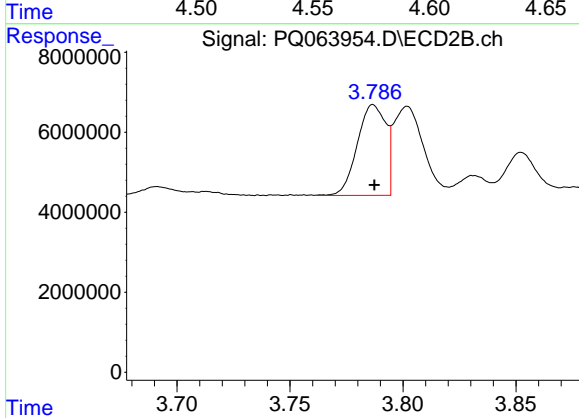
#2 Decachlorobiphenyl
 R.T.: 7.574 min
 Delta R.T.: 0.001 min
 Response: 119200787
 Conc: 21.91 ng/ml



#21 AR-1248-1

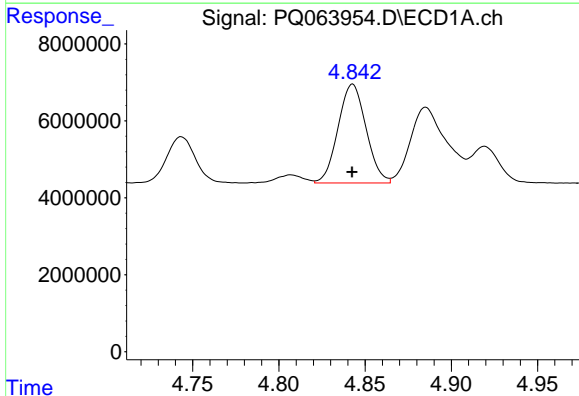
R.T.: 4.574 min
 Delta R.T.: 0.000 min
 Response: 20227546
 Conc: 230.89 ng/ml

Instrument :
 ECD_Q
 ClientSampleId :



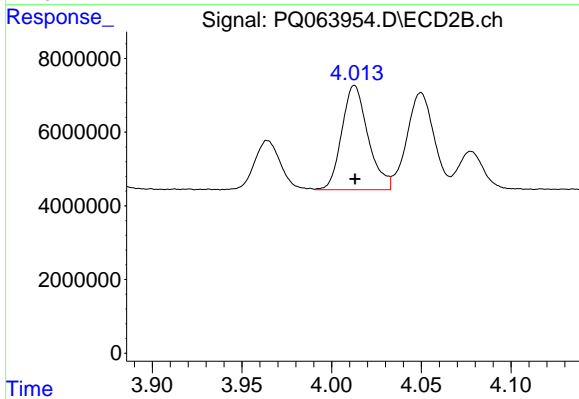
#21 AR-1248-1

R.T.: 3.787 min
 Delta R.T.: 0.000 min
 Response: 19837421
 Conc: 234.55 ng/ml



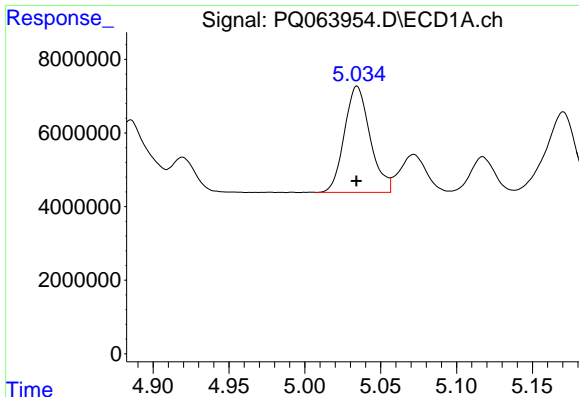
#22 AR-1248-2

R.T.: 4.843 min
 Delta R.T.: 0.000 min
 Response: 28970387
 Conc: 222.80 ng/ml



#22 AR-1248-2

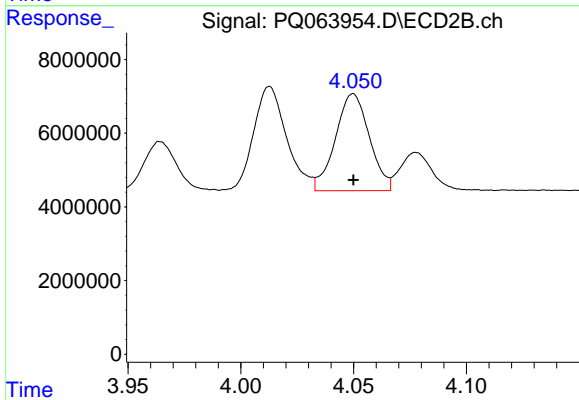
R.T.: 4.013 min
 Delta R.T.: 0.000 min
 Response: 28920163
 Conc: 226.34 ng/ml



#23 AR-1248-3

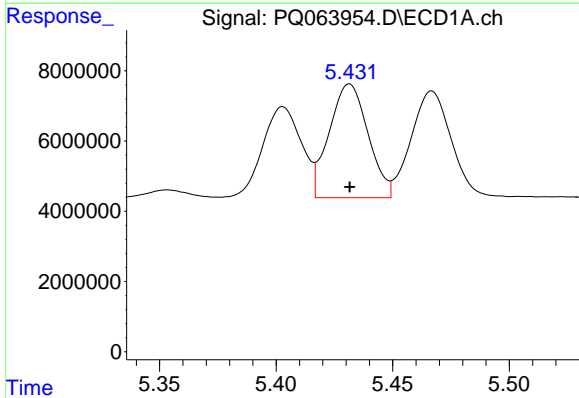
R.T.: 5.034 min
 Delta R.T.: 0.000 min
 Response: 34022585
 Conc: 220.57 ng/ml

Instrument :
 ECD_Q
 ClientSampleId :



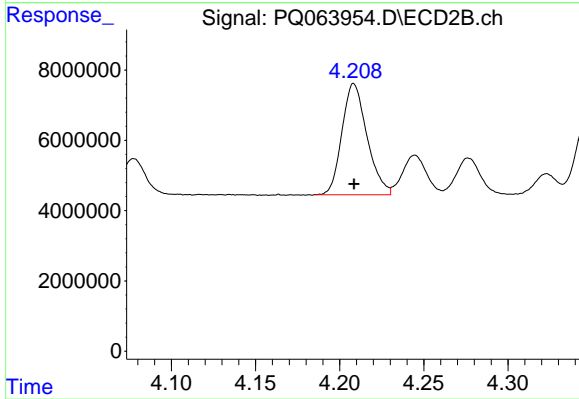
#23 AR-1248-3

R.T.: 4.050 min
 Delta R.T.: 0.000 min
 Response: 27609870
 Conc: 226.16 ng/ml



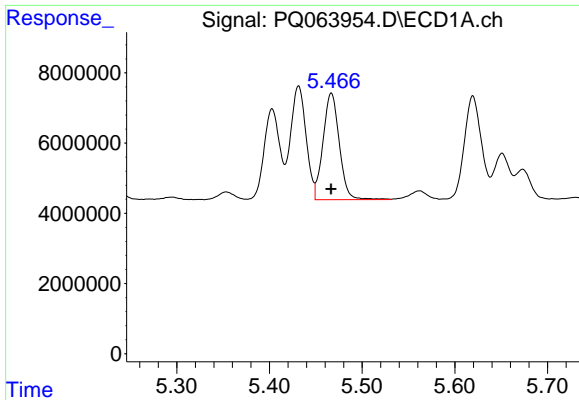
#24 AR-1248-4

R.T.: 5.431 min
 Delta R.T.: 0.000 min
 Response: 37566124
 Conc: 226.75 ng/ml



#24 AR-1248-4

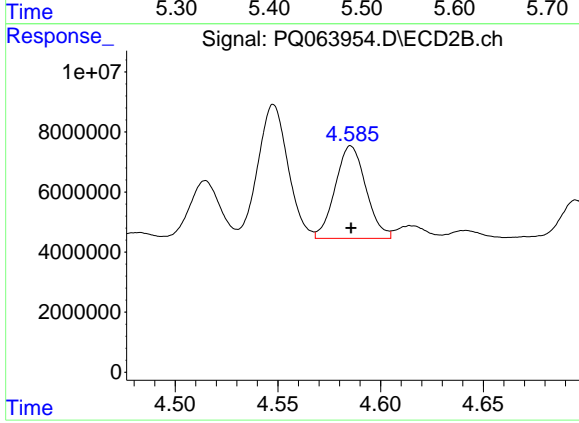
R.T.: 4.208 min
 Delta R.T.: 0.000 min
 Response: 32833601
 Conc: 221.52 ng/ml



#25 AR-1248-5

R.T.: 5.467 min
Delta R.T.: 0.000 min
Response: 36960049
Conc: 226.23 ng/ml

Instrument :
ECD_Q
ClientSampleId :



#25 AR-1248-5

R.T.: 4.585 min
Delta R.T.: 0.000 min
Response: 32101829
Conc: 221.83 ng/ml