

Data Path : Z:\pestpcbsrv\HPCHEM1\ECD\_Q\Data\PQ111123\  
 Data File : PQ063958.D  
 Signal(s) : Signal #1: ECD1A.ch Signal #2: ECD2B.ch  
 Acq On : 10 Nov 2023 22:53  
 Operator : YP\AJ  
 Sample : AR1254ICC100  
 Misc :  
 ALS Vial : 28 Sample Multiplier: 1

Instrument :  
 ECD\_Q  
 ClientSampleId :

Integration File signal 1: autoint1.e  
 Integration File signal 2: autoint2.e  
 Quant Time: Nov 11 03:07:26 2023  
 Quant Method : Z:\pestpcbsrv\HPCHEM1\ECD\_Q\Method\PQ111123CLP.M  
 Quant Title : GC EXTRACTABLES  
 QLast Update : Sat Nov 11 03:05:20 2023  
 Response via : Initial Calibration  
 Integrator: ChemStation

Volume Inj. : 1 µl  
 Signal #1 Phase : ZB MR1 Signal #2 Phase: ZB MR2  
 Signal #1 Info : 30Mx0.32mmx 0.5µm Signal #2 Info : 30M x 0.32mm x 0.25µm

Compound	RT#1	RT#2	Resp#1	Resp#2	ng/ml	ng/ml
-----						
System Monitoring Compounds						
1) SA Tetrachlo...	3.459	2.777	24559925	25082327	5.368	5.368
2) SA Decachlor...	8.692	7.573	37492725	62484404	11.029	11.253
Target Compounds						
26) L6 AR-1254-1	5.404	4.547	19812058	25318999	113.388	115.249
27) L6 AR-1254-2	5.622	4.695	30918299	22158652	114.449	115.536
28) L6 AR-1254-3	5.979	5.078	30588302	33476730	110.037	111.551
29) L6 AR-1254-4	6.265	5.305	22426529	21400146	110.816	112.050
30) L6 AR-1254-5	6.679	5.713	23996948	30397247	108.032	110.257
-----						

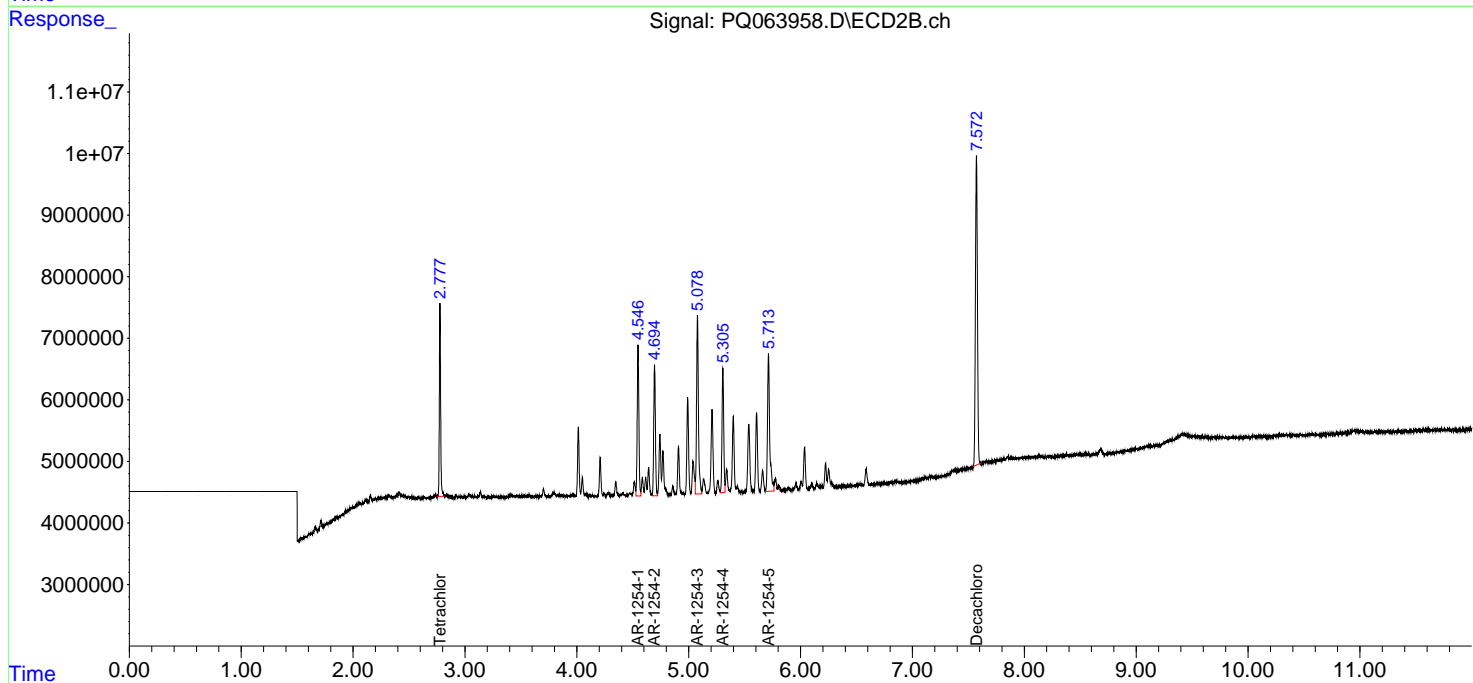
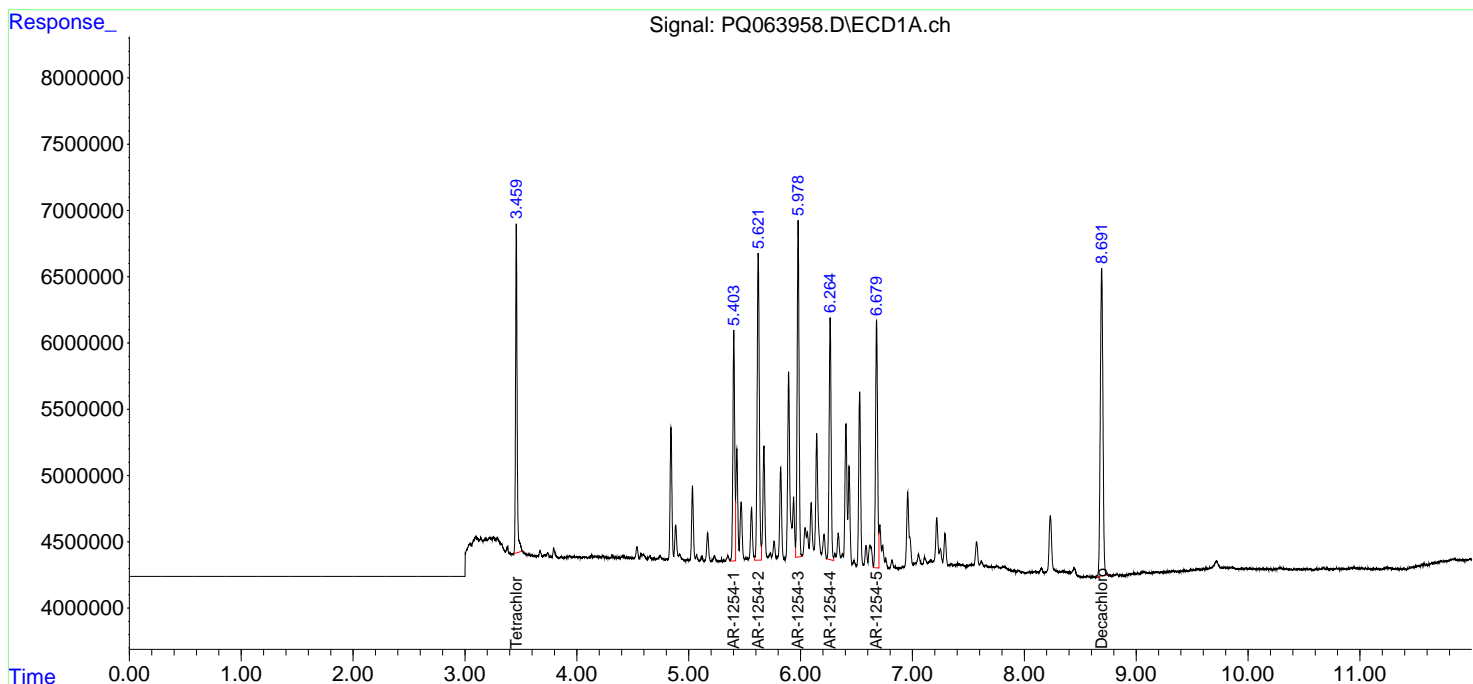
(f)=RT Delta > 1/2 Window (#)=Amounts differ by > 25% (m)=manual int.

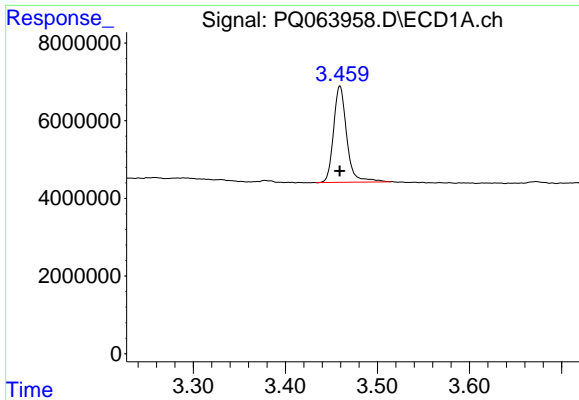
Data Path : Z:\pestpcbsrv\HPCHEM1\ECD\_Q\Data\PQ111123\  
 Data File : PQ063958.D  
 Signal(s) : Signal #1: ECD1A.ch Signal #2: ECD2B.ch  
 Acq On : 10 Nov 2023 22:53  
 Operator : YP\AJ  
 Sample : AR1254ICC100  
 Misc :  
 ALS Vial : 28 Sample Multiplier: 1

Instrument :  
 ECD\_Q  
 ClientSampleId :

Integration File signal 1: autoint1.e  
 Integration File signal 2: autoint2.e  
 Quant Time: Nov 11 03:07:26 2023  
 Quant Method : Z:\pestpcbsrv\HPCHEM1\ECD\_Q\Method\PQ111123CLP.M  
 Quant Title : GC EXTRACTABLES  
 QLast Update : Sat Nov 11 03:05:20 2023  
 Response via : Initial Calibration  
 Integrator: ChemStation

Volume Inj. : 1 µl  
 Signal #1 Phase : ZB MR1 Signal #2 Phase: ZB MR2  
 Signal #1 Info : 30Mx0.32mmx 0.5µm Signal #2 Info : 30M x 0.32mm x 0.25µm

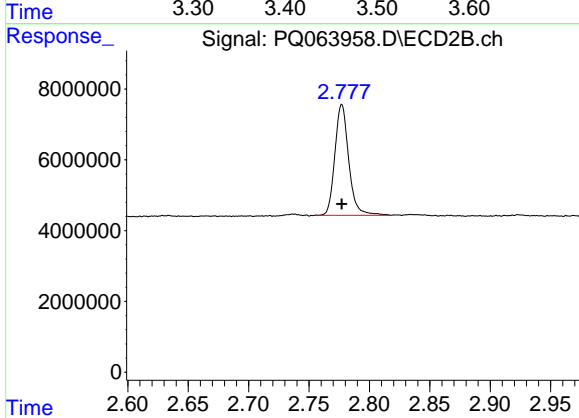




#1 Tetrachloro-m-xylene

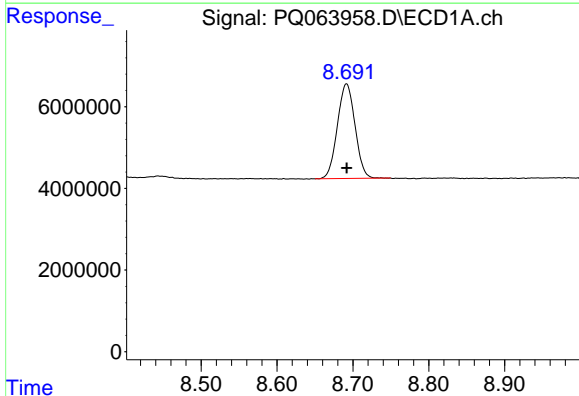
R.T.: 3.459 min  
 Delta R.T.: 0.000 min  
 Response: 24559925  
 Conc: 5.37 ng/ml

Instrument :  
 ECD\_Q  
 ClientSampleId :



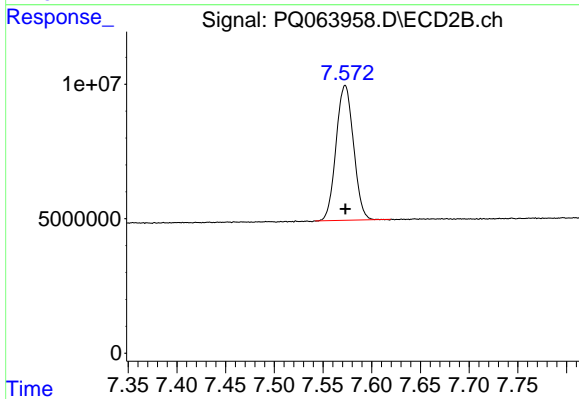
#1 Tetrachloro-m-xylene

R.T.: 2.777 min  
 Delta R.T.: 0.000 min  
 Response: 25082327  
 Conc: 5.37 ng/ml



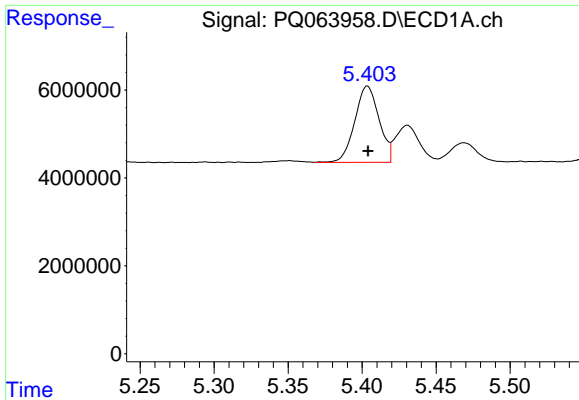
#2 Decachlorobiphenyl

R.T.: 8.692 min  
 Delta R.T.: 0.000 min  
 Response: 37492725  
 Conc: 11.03 ng/ml



#2 Decachlorobiphenyl

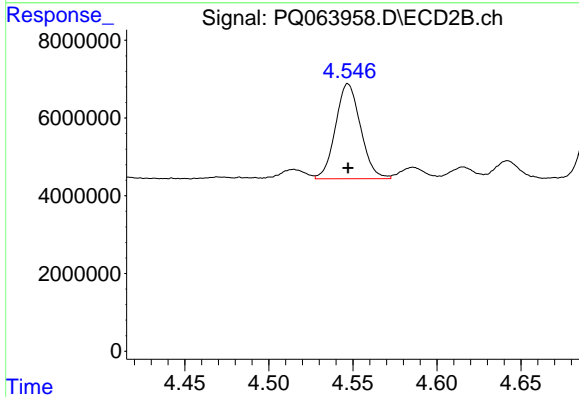
R.T.: 7.573 min  
 Delta R.T.: 0.000 min  
 Response: 62484404  
 Conc: 11.25 ng/ml



#26 AR-1254-1

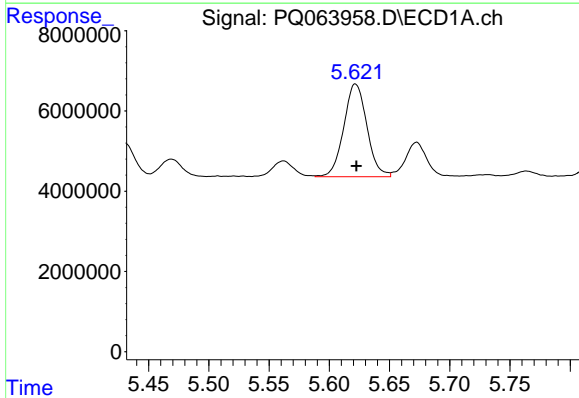
R.T.: 5.404 min  
 Delta R.T.: 0.000 min  
 Response: 19812058  
 Conc: 113.39 ng/ml

Instrument :  
 ECD\_Q  
 ClientSampleId :



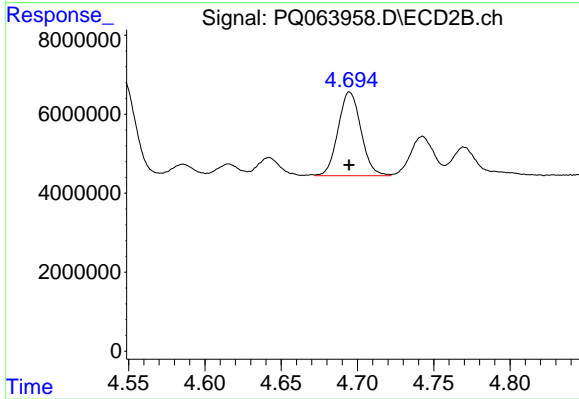
#26 AR-1254-1

R.T.: 4.547 min  
 Delta R.T.: 0.000 min  
 Response: 25318999  
 Conc: 115.25 ng/ml



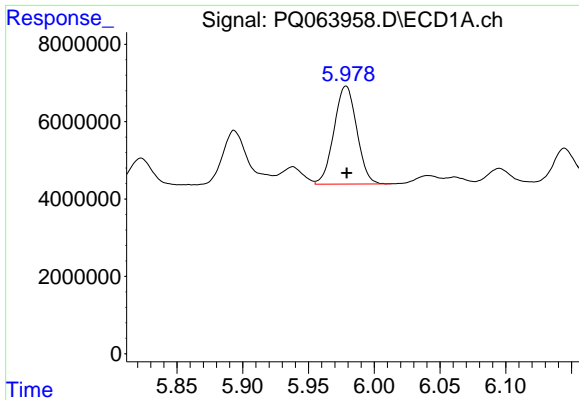
#27 AR-1254-2

R.T.: 5.622 min  
 Delta R.T.: 0.000 min  
 Response: 30918299  
 Conc: 114.45 ng/ml



#27 AR-1254-2

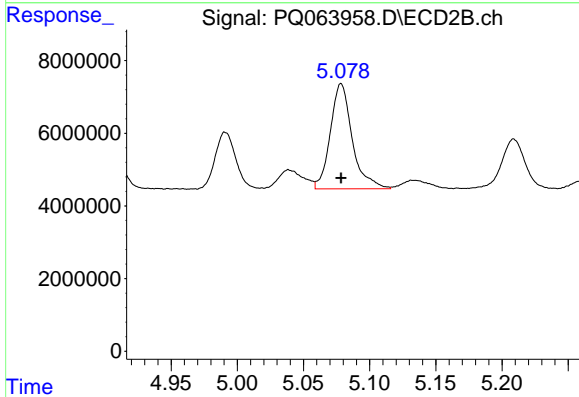
R.T.: 4.695 min  
 Delta R.T.: 0.000 min  
 Response: 22158652  
 Conc: 115.54 ng/ml



#28 AR-1254-3

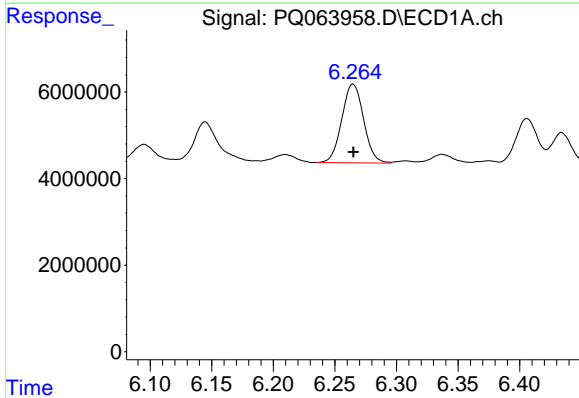
R.T.: 5.979 min  
 Delta R.T.: 0.000 min  
 Response: 30588302  
 Conc: 110.04 ng/ml

Instrument :  
 ECD\_Q  
 ClientSampleId :



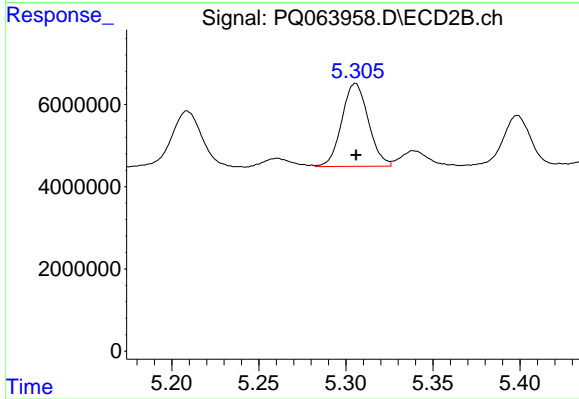
#28 AR-1254-3

R.T.: 5.078 min  
 Delta R.T.: 0.000 min  
 Response: 33476730  
 Conc: 111.55 ng/ml



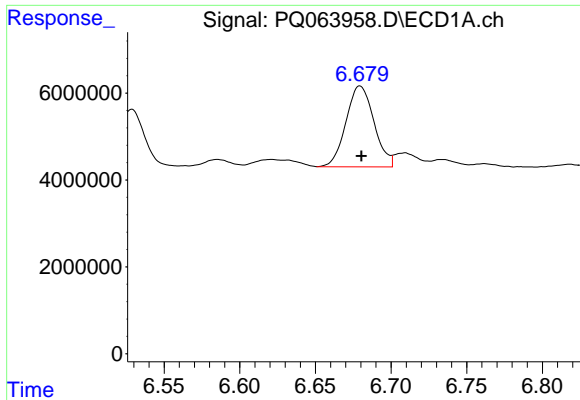
#29 AR-1254-4

R.T.: 6.265 min  
 Delta R.T.: 0.000 min  
 Response: 22426529  
 Conc: 110.82 ng/ml



#29 AR-1254-4

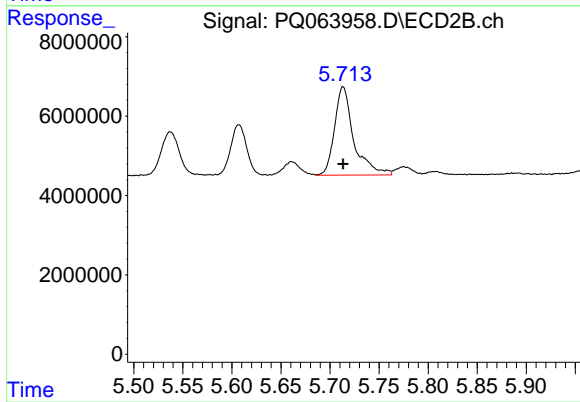
R.T.: 5.305 min  
 Delta R.T.: 0.000 min  
 Response: 21400146  
 Conc: 112.05 ng/ml



#30 AR-1254-5

R.T.: 6.679 min  
Delta R.T.: -0.001 min  
Response: 23996948  
Conc: 108.03 ng/ml

Instrument :  
ECD\_Q  
ClientSampleId :



#30 AR-1254-5

R.T.: 5.713 min  
Delta R.T.: 0.000 min  
Response: 30397247  
Conc: 110.26 ng/ml