

Data Path : Z:\pestpcbsrv\HPCHEM1\ECD\_Q\Data\PQ111123\  
 Data File : PQ063975.D  
 Signal(s) : Signal #1: ECD1A.ch Signal #2: ECD2B.ch  
 Acq On : 11 Nov 2023 03:18  
 Operator : YP\AJ  
 Sample : AR1242CCC400  
 Misc :  
 ALS Vial : 45 Sample Multiplier: 1

Instrument :  
 ECD\_Q  
 ClientSampleId :

Integration File signal 1: autoint1.e  
 Integration File signal 2: autoint2.e  
 Quant Time: Nov 11 06:19:39 2023  
 Quant Method : Z:\pestpcbsrv\HPCHEM1\ECD\_Q\Method\PQ111123CLP.M  
 Quant Title : GC EXTRACTABLES  
 QLast Update : Sat Nov 11 06:14:57 2023  
 Response via : Initial Calibration  
 Integrator: ChemStation

Volume Inj. : 1 µl  
 Signal #1 Phase : ZB MR1 Signal #2 Phase: ZB MR2  
 Signal #1 Info : 30Mx0.32mmx 0.5µm Signal #2 Info : 30M x 0.32mm x 0.25µm

Compound	RT#1	RT#2	Resp#1	Resp#2	ng/ml	ng/ml
System Monitoring Compounds						
1) SA Tetrachlo...	3.460	2.777	88005294	86892729	19.204	19.353
2) SA Decachlor...	8.693	7.573	127.0E6	208.2E6	38.445	38.837
Target Compounds						
3) L1 AR-1016-1	4.574	3.787	46352196	42750459	323.222	316.634
4) L1 AR-1016-2	4.594	3.802	68444378	63063586	312.459	320.486
5) L1 AR-1016-3	4.653	3.964	42883424	33628818	313.449	319.400
6) L1 AR-1016-4	4.745	4.013	35062944	28540118	311.057	321.426
7) L1 AR-1016-5	5.035	4.209	35951964	35029939	322.401	323.933
8) L2 AR-1221-1	3.660	2.980	5281166	5441755	95.525	100.225
9) L2 AR-1221-2	3.743	3.058	6435069	7289729	176.575	196.272
10) L2 AR-1221-3	3.813	3.127	26791768	27524589	217.202	220.663
11) L3 AR-1232-1	3.813	3.127	26791768	27524589	263.985	264.403
12) L3 AR-1232-2	4.313	3.802	36525409	63063586	720.886	688.289
13) L3 AR-1232-3	4.594	3.964	68444378	33628818	704.654	706.845
14) L3 AR-1232-4	4.745	4.050	35062944	31382102	698.402	777.581
15) L3 AR-1232-5	4.843	4.209	27449367	35029939	759.986	752.487
16) L4 AR-1242-1	4.574	3.787	46352196	42750459	386.416	373.344
17) L4 AR-1242-2	4.594	3.802	68444378	63063586	380.001	379.098
18) L4 AR-1242-3	4.653	3.964	42883424	33628818	382.140	381.371
19) L4 AR-1242-4	4.745	4.050	35062944	31382102	380.917	381.475
20) L4 AR-1242-5	5.466	4.548	37642712	40442154	393.829	380.313
21) L5 AR-1248-1	4.574	3.787	46352196	42750459	499.634	478.821
22) L5 AR-1248-2	4.843	4.013	27449367	28540118	207.629	218.651
23) L5 AR-1248-3	5.035	4.050	35951964	31382102	229.196	252.308
24) L5 AR-1248-4	5.431	4.209	35593711	35029939	207.335	231.453
25) L5 AR-1248-5	5.466	4.585	37642712	33941284	224.269	229.334
26) L6 AR-1254-1	5.403	4.548	27572305	40442154	158.883	184.811
27) L6 AR-1254-2	5.619	4.694	32165466	10451126	119.670	54.851 #
28) L6 AR-1254-3	5.979	5.078	12817839	13518013	46.640	45.509
29) L6 AR-1254-4	6.266	5.305	9600014	9575952	48.090	50.731
30) L6 AR-1254-5	6.681	5.712	2552901	3095261	11.667	11.378
31) L7 AR-1260-1	6.145	5.212	921784	5941972	4.215	28.276 #
32) L7 AR-1260-2	6.406	5.400	1177802	993112	4.523	3.988
33) L7 AR-1260-3	6.713f	5.536	240882	1545856	1.256	6.510 #
34) L7 AR-1260-4	6.985	6.035	156611	1382483	0.729	6.834 #
35) L7 AR-1260-5	7.245f	6.223	767044	660153	1.895	1.414 #
36) L8 AR-1262-1	6.713f	5.712f	240882	3095261	0.852	10.681 #
37) L8 AR-1262-2	7.245f	6.223	767044	660153	1.668	1.262
45) L9 AR-1268-5	8.450	7.356	1098466	1017554	0.893	0.562 #

(f)=RT Delta > 1/2 Window (#)=Amounts differ by > 25% (m)=manual int.

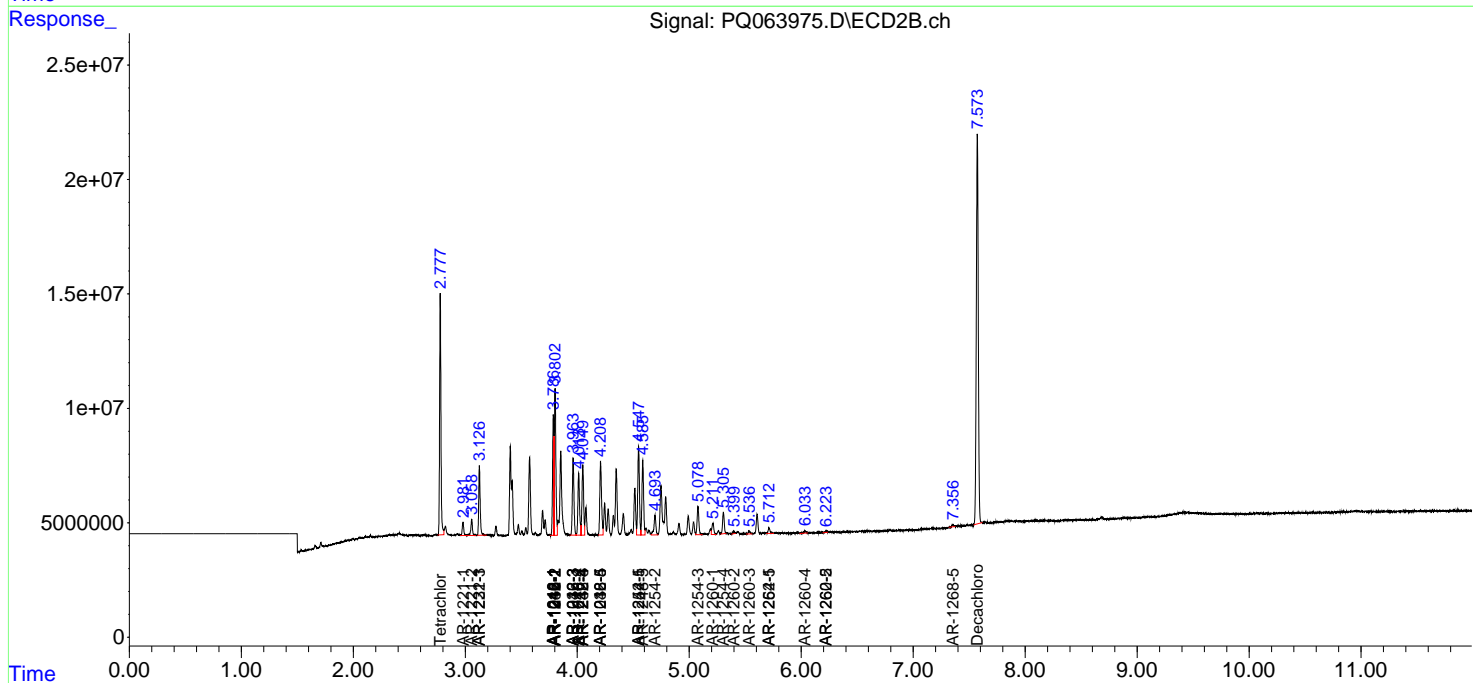
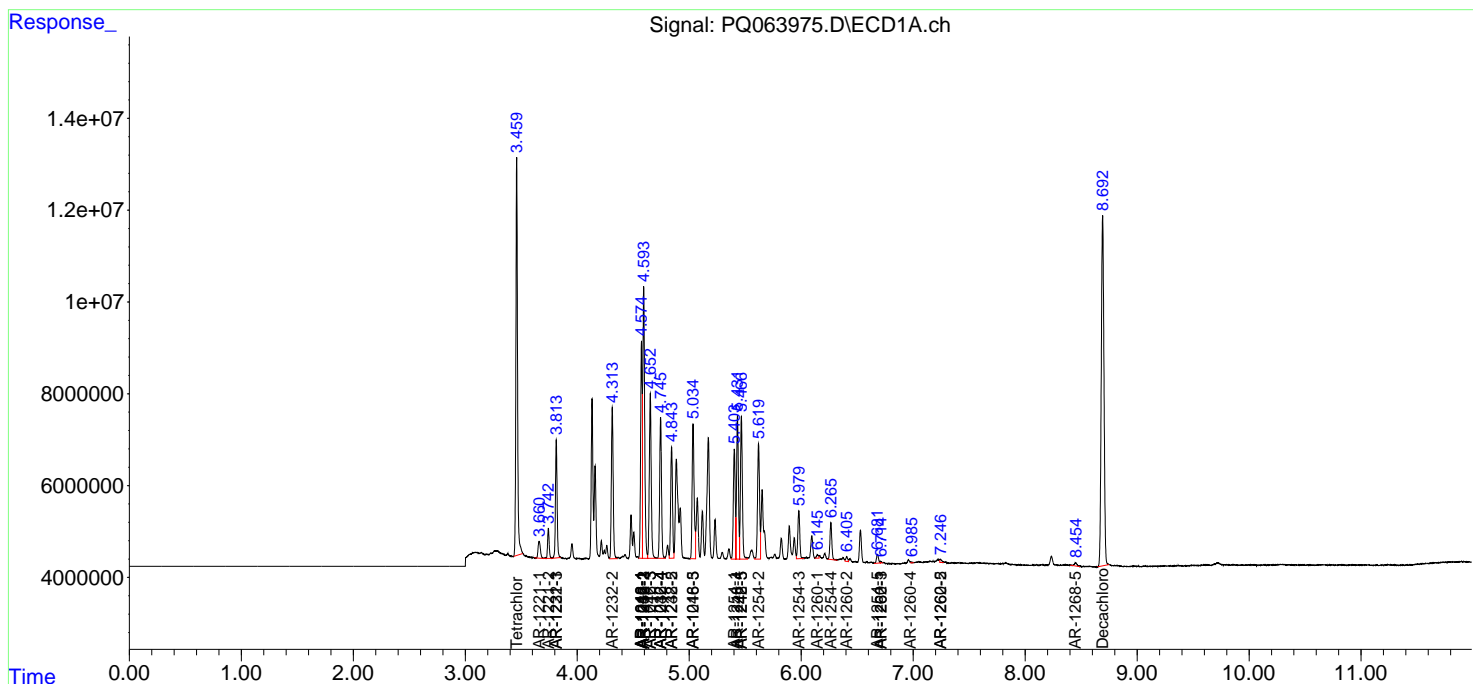
Instrument :  
ECD\_Q  
ClientSampleId :

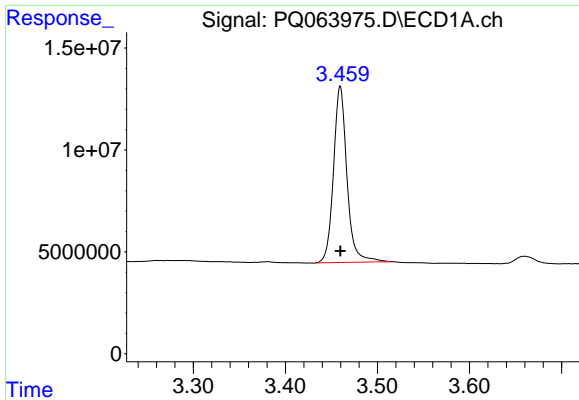
Data Path : Z:\pestpcbsrv\HPCHEM1\ECD\_Q\Data\PQ111123\  
 Data File : PQ063975.D  
 Signal(s) : Signal #1: ECD1A.ch Signal #2: ECD2B.ch  
 Acq On : 11 Nov 2023 03:18  
 Operator : YP\AJ  
 Sample : AR1242CCC400  
 Misc :  
 ALS Vial : 45 Sample Multiplier: 1

Instrument :  
 ECD\_Q  
 ClientSampleId :

Integration File signal 1: autoint1.e  
 Integration File signal 2: autoint2.e  
 Quant Time: Nov 11 06:19:39 2023  
 Quant Method : Z:\pestpcbsrv\HPCHEM1\ECD\_Q\Method\PQ111123CLP.M  
 Quant Title : GC EXTRACTABLES  
 QLast Update : Sat Nov 11 06:14:57 2023  
 Response via : Initial Calibration  
 Integrator: ChemStation

Volume Inj. : 1 µl  
 Signal #1 Phase : ZB MR1 Signal #2 Phase: ZB MR2  
 Signal #1 Info : 30Mx0.32mmx 0.5µm Signal #2 Info : 30M x 0.32mm x 0.25µm

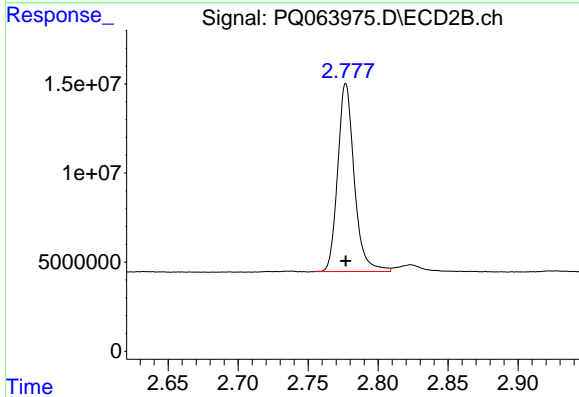




#1 Tetrachloro-m-xylene

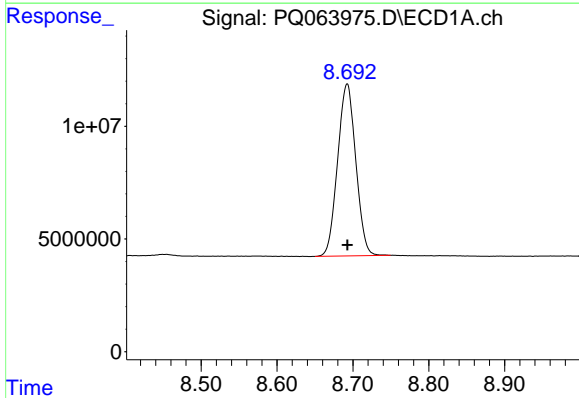
R.T.: 3.460 min  
 Delta R.T.: 0.000 min  
 Response: 88005294  
 Conc: 19.20 ng/ml

Instrument :  
 ECD\_Q  
 ClientSampleId :



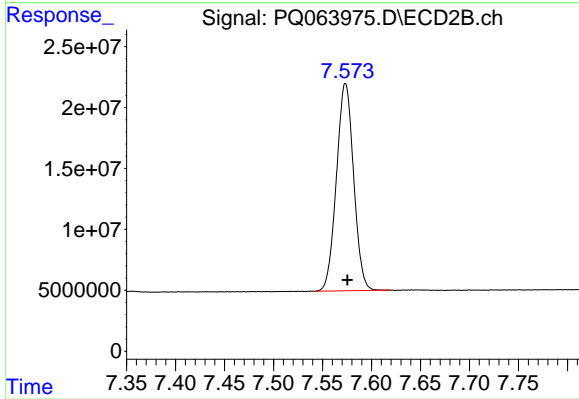
#1 Tetrachloro-m-xylene

R.T.: 2.777 min  
 Delta R.T.: 0.000 min  
 Response: 86892729  
 Conc: 19.35 ng/ml



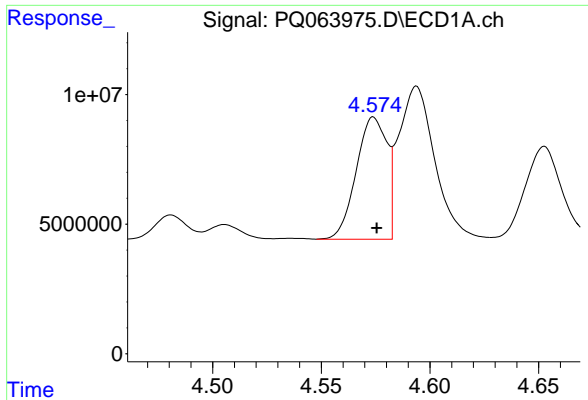
#2 Decachlorobiphenyl

R.T.: 8.693 min  
 Delta R.T.: 0.000 min  
 Response: 126981932  
 Conc: 38.45 ng/ml



#2 Decachlorobiphenyl

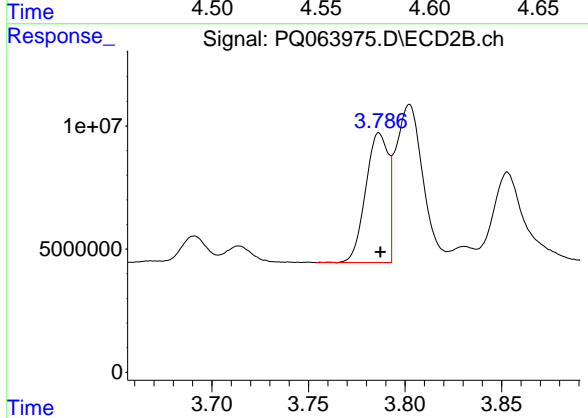
R.T.: 7.573 min  
 Delta R.T.: -0.002 min  
 Response: 208151083  
 Conc: 38.84 ng/ml



#3 AR-1016-1

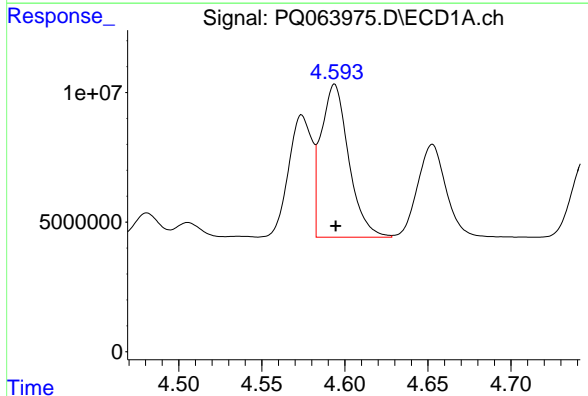
R.T.: 4.574 min  
 Delta R.T.: -0.001 min  
 Response: 46352196  
 Conc: 323.22 ng/ml

Instrument :  
 ECD\_Q  
 ClientSampleId :



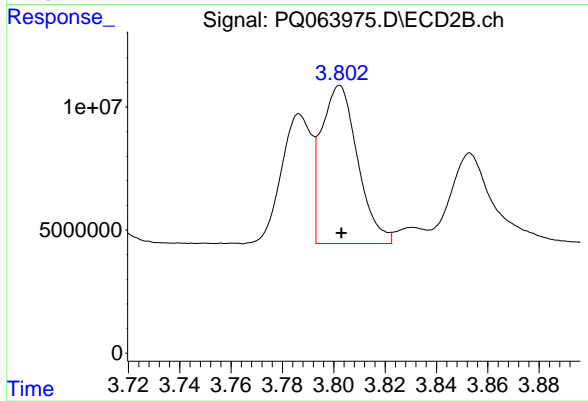
#3 AR-1016-1

R.T.: 3.787 min  
 Delta R.T.: 0.000 min  
 Response: 42750459  
 Conc: 316.63 ng/ml



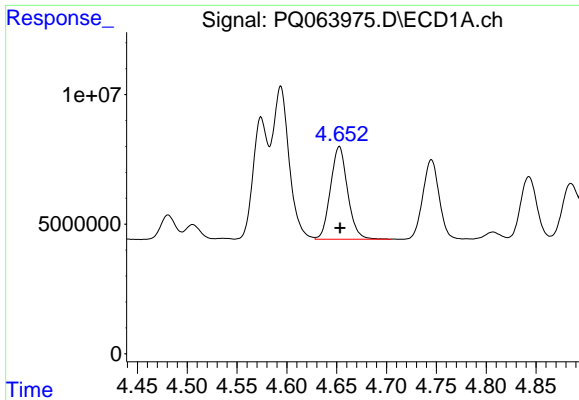
#4 AR-1016-2

R.T.: 4.594 min  
 Delta R.T.: 0.000 min  
 Response: 68444378  
 Conc: 312.46 ng/ml



#4 AR-1016-2

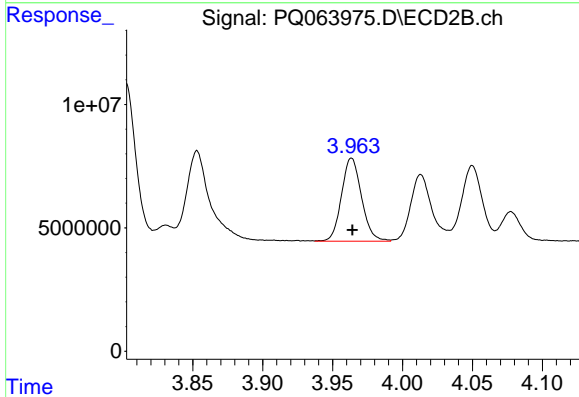
R.T.: 3.802 min  
 Delta R.T.: 0.000 min  
 Response: 63063586  
 Conc: 320.49 ng/ml



#5 AR-1016-3

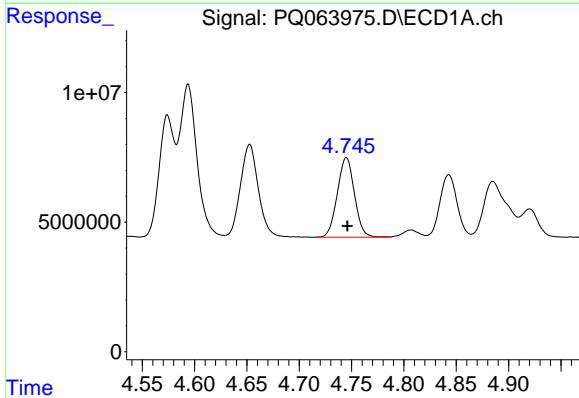
R.T.: 4.653 min  
 Delta R.T.: 0.000 min  
 Response: 42883424  
 Conc: 313.45 ng/ml

Instrument :  
 ECD\_Q  
 ClientSampleId :



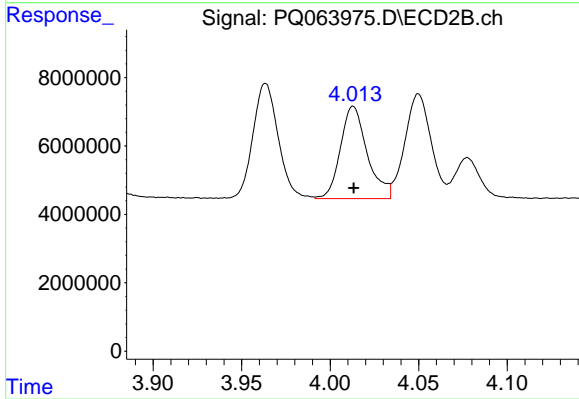
#5 AR-1016-3

R.T.: 3.964 min  
 Delta R.T.: 0.000 min  
 Response: 33628818  
 Conc: 319.40 ng/ml



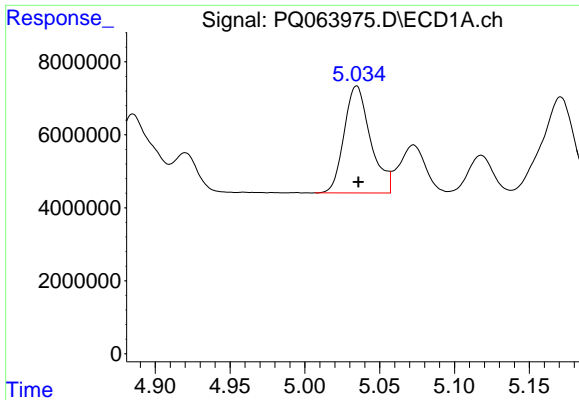
#6 AR-1016-4

R.T.: 4.745 min  
 Delta R.T.: 0.000 min  
 Response: 35062944  
 Conc: 311.06 ng/ml



#6 AR-1016-4

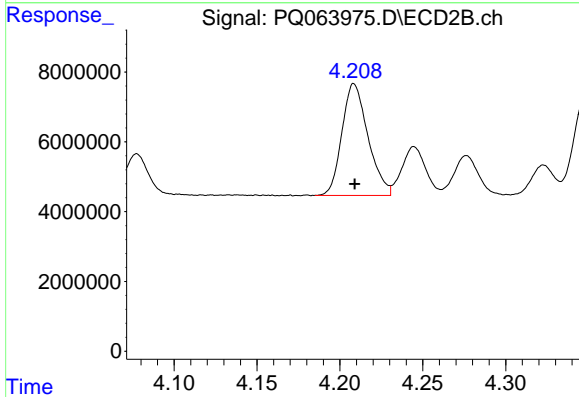
R.T.: 4.013 min  
 Delta R.T.: 0.000 min  
 Response: 28540118  
 Conc: 321.43 ng/ml



#7 AR-1016-5

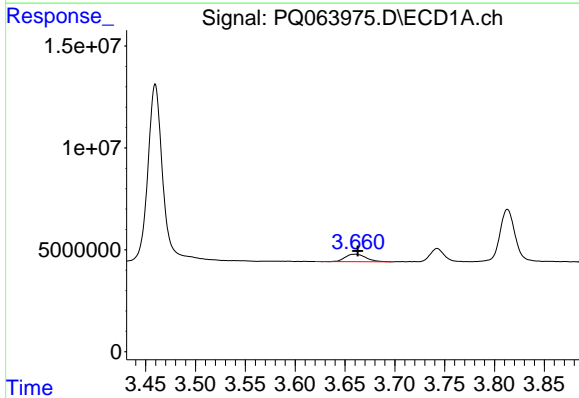
R.T.: 5.035 min  
 Delta R.T.: -0.001 min  
 Response: 35951964  
 Conc: 322.40 ng/ml

Instrument :  
 ECD\_Q  
 ClientSampleId :



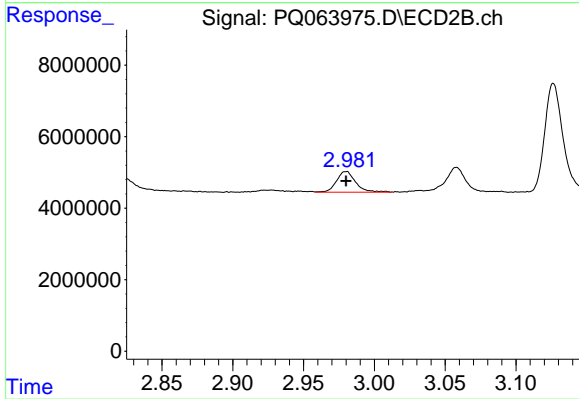
#7 AR-1016-5

R.T.: 4.209 min  
 Delta R.T.: 0.000 min  
 Response: 35029939  
 Conc: 323.93 ng/ml



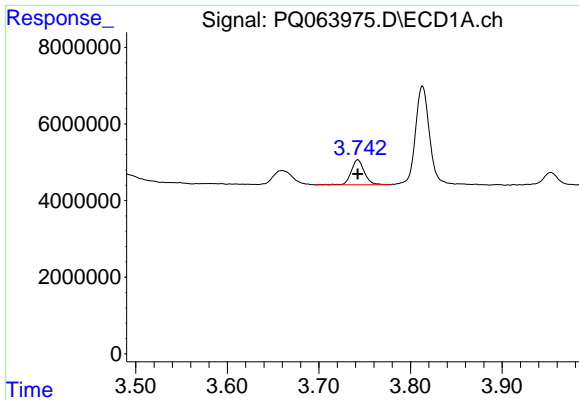
#8 AR-1221-1

R.T.: 3.660 min  
 Delta R.T.: -0.003 min  
 Response: 5281166  
 Conc: 95.53 ng/ml



#8 AR-1221-1

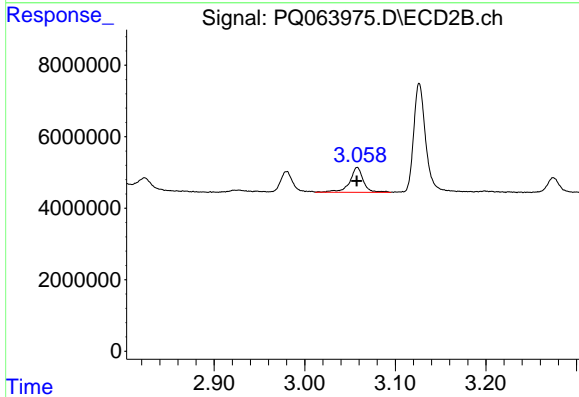
R.T.: 2.980 min  
 Delta R.T.: 0.000 min  
 Response: 5441755  
 Conc: 100.22 ng/ml



#9 AR-1221-2

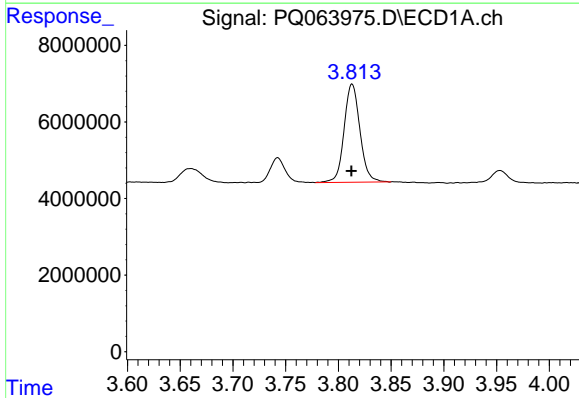
R.T.: 3.743 min  
 Delta R.T.: 0.000 min  
 Response: 6435069  
 Conc: 176.58 ng/ml

Instrument :  
 ECD\_Q  
 ClientSampleId :



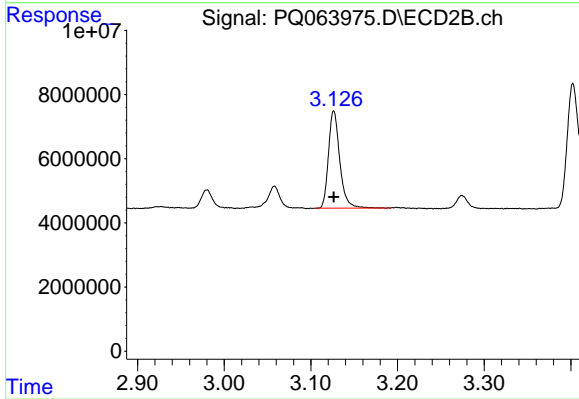
#9 AR-1221-2

R.T.: 3.058 min  
 Delta R.T.: 0.000 min  
 Response: 7289729  
 Conc: 196.27 ng/ml



#10 AR-1221-3

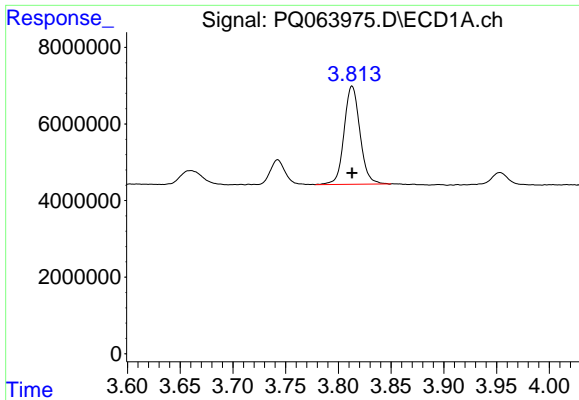
R.T.: 3.813 min  
 Delta R.T.: 0.000 min  
 Response: 26791768  
 Conc: 217.20 ng/ml



#10 AR-1221-3

R.T.: 3.127 min  
 Delta R.T.: 0.000 min  
 Response: 27524589  
 Conc: 220.66 ng/ml

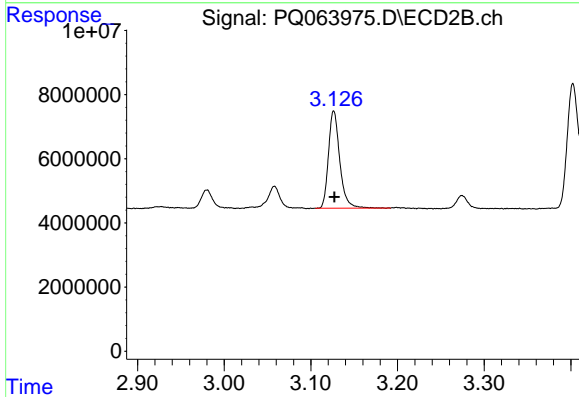




#11 AR-1232-1

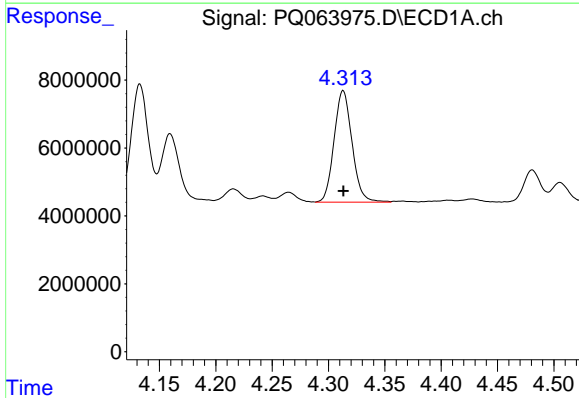
R.T.: 3.813 min  
 Delta R.T.: 0.000 min  
 Response: 26791768  
 Conc: 263.99 ng/ml

Instrument :  
 ECD\_Q  
 ClientSampleId :



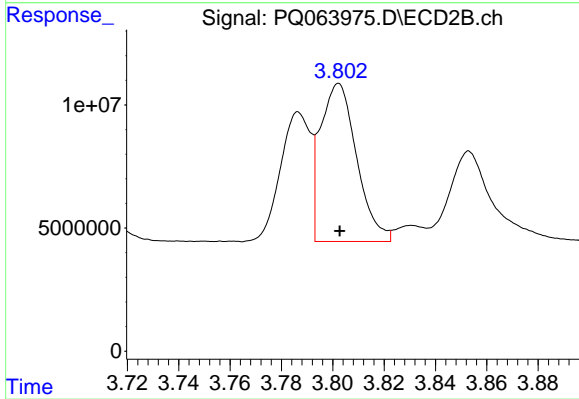
#11 AR-1232-1

R.T.: 3.127 min  
 Delta R.T.: 0.000 min  
 Response: 27524589  
 Conc: 264.40 ng/ml



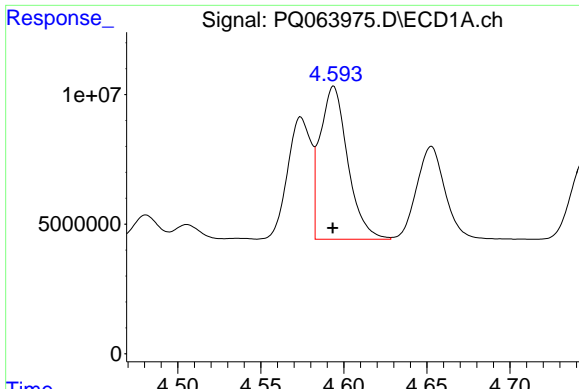
#12 AR-1232-2

R.T.: 4.313 min  
 Delta R.T.: 0.000 min  
 Response: 36525409  
 Conc: 720.89 ng/ml



#12 AR-1232-2

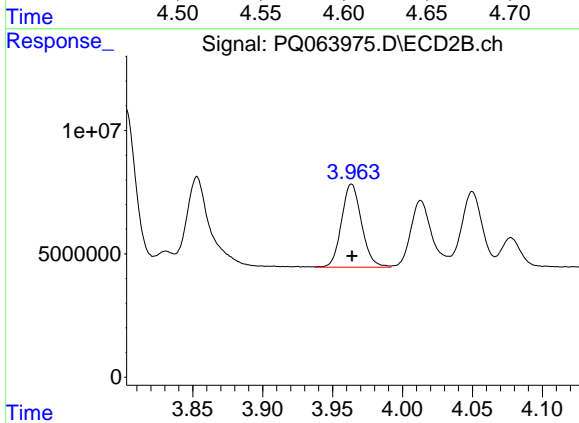
R.T.: 3.802 min  
 Delta R.T.: 0.000 min  
 Response: 63063586  
 Conc: 688.29 ng/ml



#13 AR-1232-3

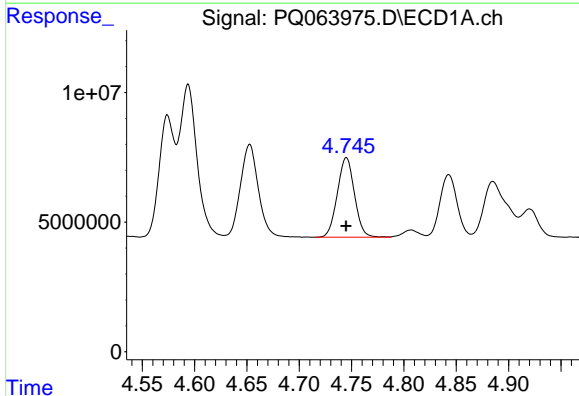
R.T.: 4.594 min  
 Delta R.T.: 0.000 min  
 Response: 68444378  
 Conc: 704.65 ng/ml

Instrument :  
 ECD\_Q  
 ClientSampleId :



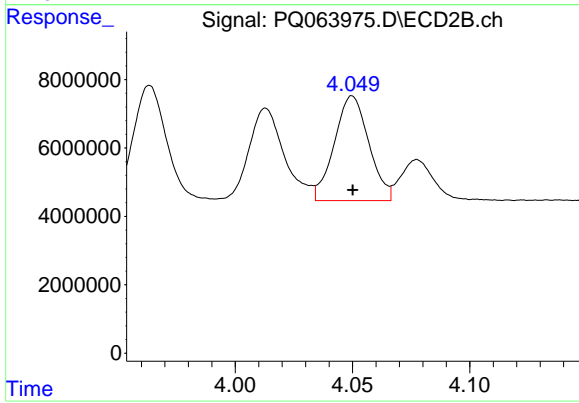
#13 AR-1232-3

R.T.: 3.964 min  
 Delta R.T.: 0.000 min  
 Response: 33628818  
 Conc: 706.85 ng/ml



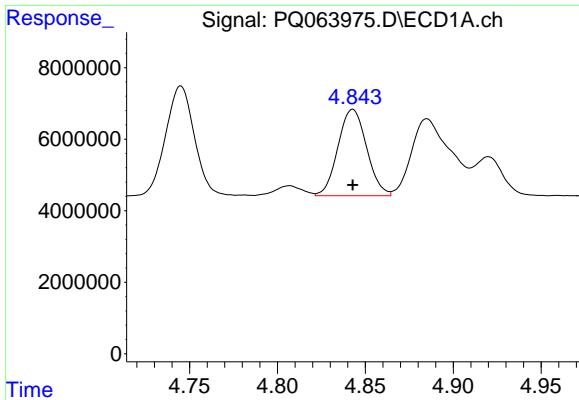
#14 AR-1232-4

R.T.: 4.745 min  
 Delta R.T.: 0.000 min  
 Response: 35062944  
 Conc: 698.40 ng/ml



#14 AR-1232-4

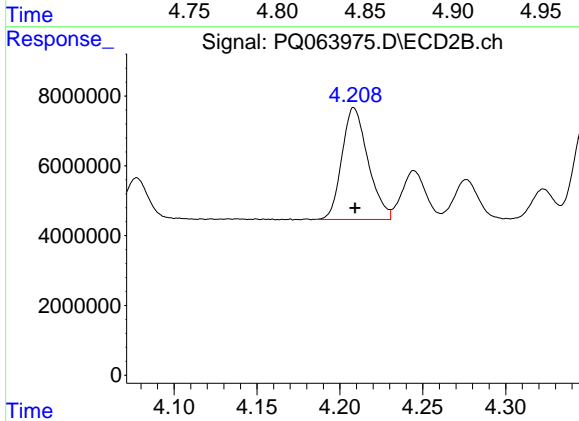
R.T.: 4.050 min  
 Delta R.T.: 0.000 min  
 Response: 31382102  
 Conc: 777.58 ng/ml



#15 AR-1232-5

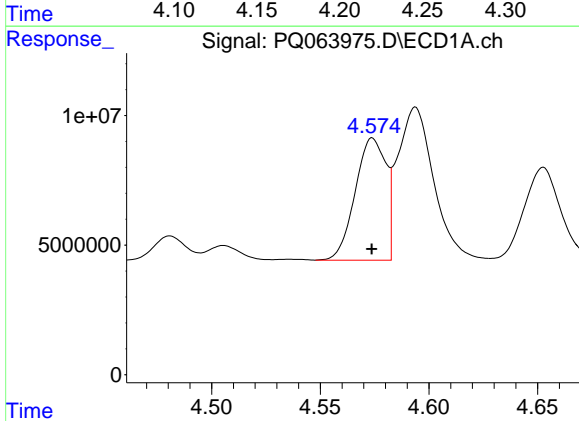
R.T.: 4.843 min  
 Delta R.T.: 0.000 min  
 Response: 27449367  
 Conc: 759.99 ng/ml

Instrument :  
 ECD\_Q  
 ClientSampleId :



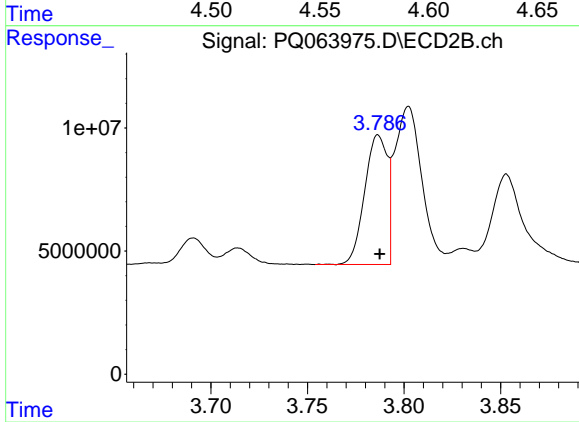
#15 AR-1232-5

R.T.: 4.209 min  
 Delta R.T.: 0.000 min  
 Response: 35029939  
 Conc: 752.49 ng/ml



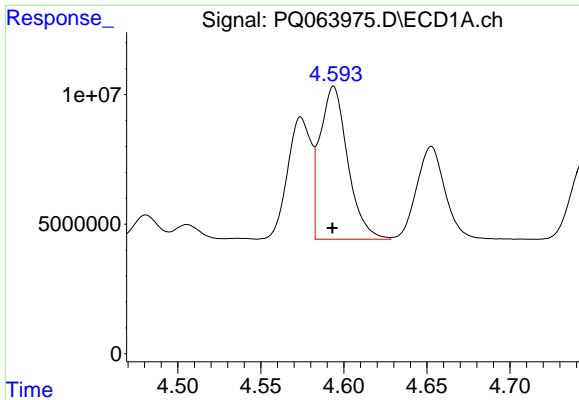
#16 AR-1242-1

R.T.: 4.574 min  
 Delta R.T.: 0.000 min  
 Response: 46352196  
 Conc: 386.42 ng/ml



#16 AR-1242-1

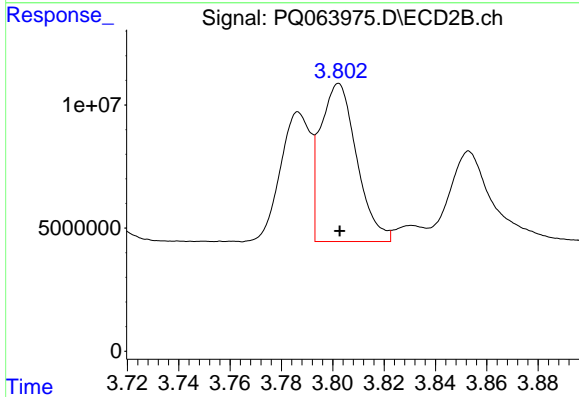
R.T.: 3.787 min  
 Delta R.T.: 0.000 min  
 Response: 42750459  
 Conc: 373.34 ng/ml



#17 AR-1242-2

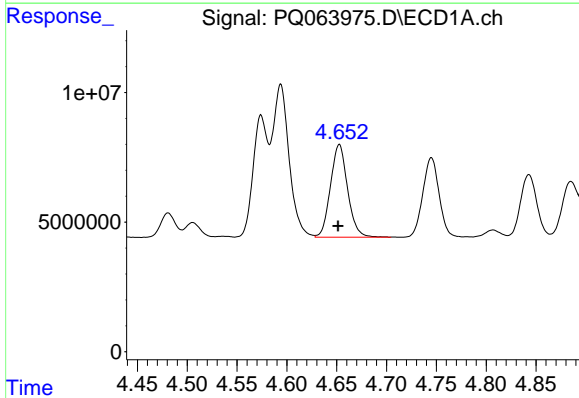
R.T.: 4.594 min  
 Delta R.T.: 0.000 min  
 Response: 68444378  
 Conc: 380.00 ng/ml

Instrument :  
 ECD\_Q  
 ClientSampleId :



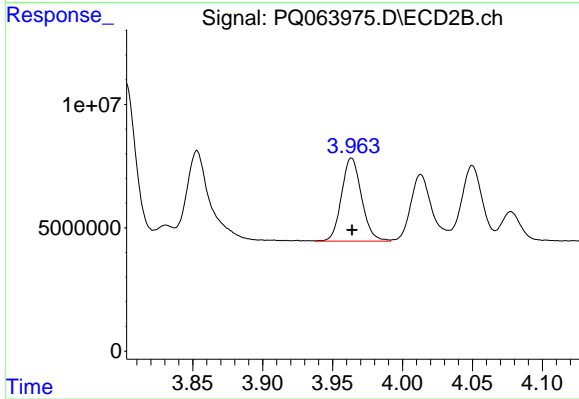
#17 AR-1242-2

R.T.: 3.802 min  
 Delta R.T.: 0.000 min  
 Response: 63063586  
 Conc: 379.10 ng/ml



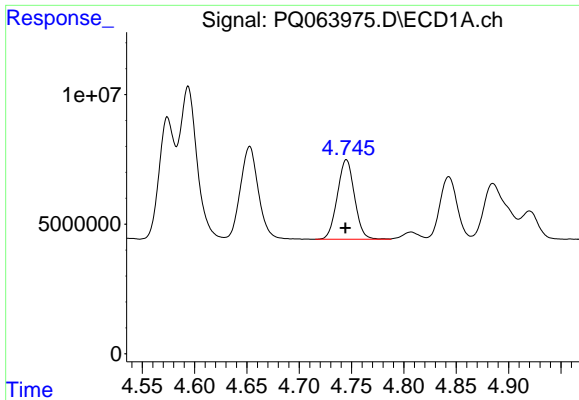
#18 AR-1242-3

R.T.: 4.653 min  
 Delta R.T.: 0.001 min  
 Response: 42883424  
 Conc: 382.14 ng/ml



#18 AR-1242-3

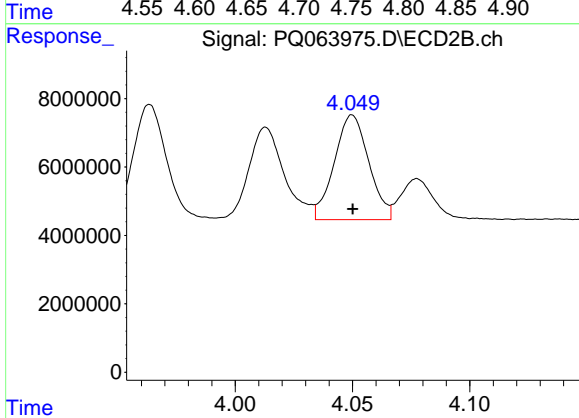
R.T.: 3.964 min  
 Delta R.T.: 0.000 min  
 Response: 33628818  
 Conc: 381.37 ng/ml



#19 AR-1242-4

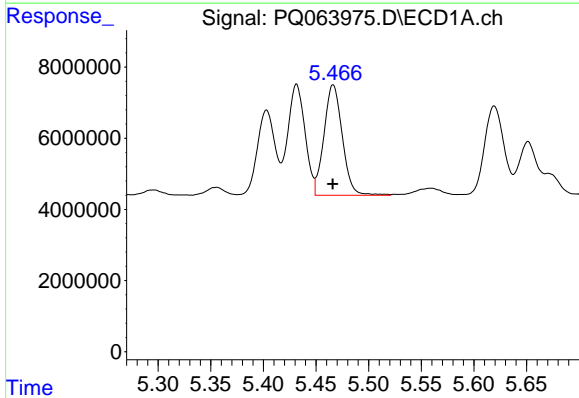
R.T.: 4.745 min  
Delta R.T.: 0.000 min  
Response: 35062944  
Conc: 380.92 ng/ml

Instrument :  
ECD\_Q  
ClientSampleId :



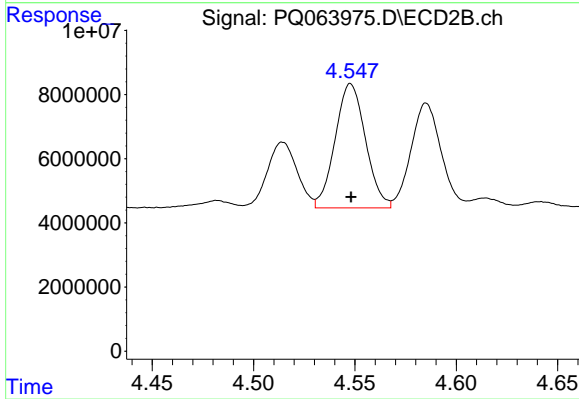
#19 AR-1242-4

R.T.: 4.050 min  
Delta R.T.: 0.000 min  
Response: 31382102  
Conc: 381.47 ng/ml



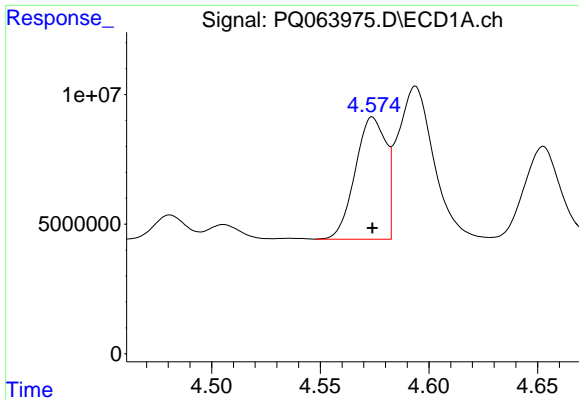
#20 AR-1242-5

R.T.: 5.466 min  
Delta R.T.: 0.000 min  
Response: 37642712  
Conc: 393.83 ng/ml



#20 AR-1242-5

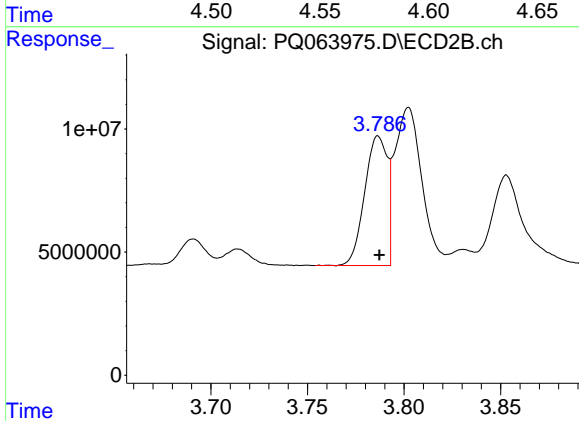
R.T.: 4.548 min  
Delta R.T.: 0.000 min  
Response: 40442154  
Conc: 380.31 ng/ml



#21 AR-1248-1

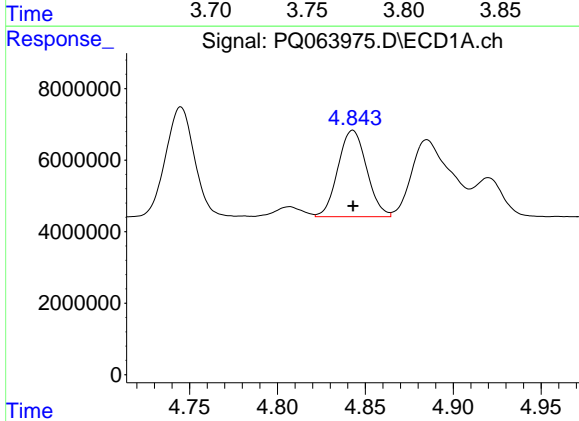
R.T.: 4.574 min  
 Delta R.T.: 0.000 min  
 Response: 46352196  
 Conc: 499.63 ng/ml

Instrument :  
 ECD\_Q  
 ClientSampleId :



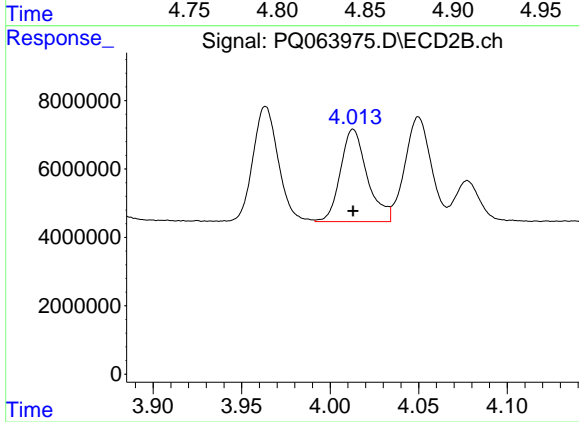
#21 AR-1248-1

R.T.: 3.787 min  
 Delta R.T.: 0.000 min  
 Response: 42750459  
 Conc: 478.82 ng/ml



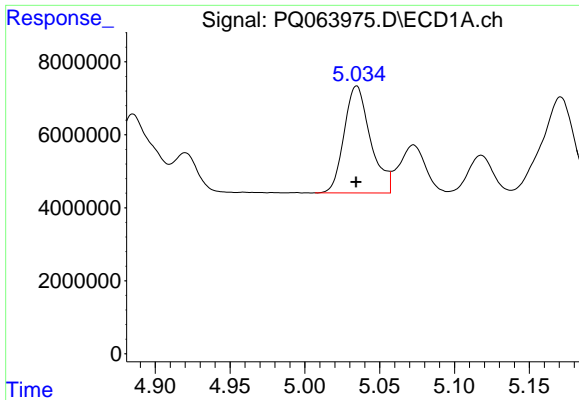
#22 AR-1248-2

R.T.: 4.843 min  
 Delta R.T.: 0.000 min  
 Response: 27449367  
 Conc: 207.63 ng/ml



#22 AR-1248-2

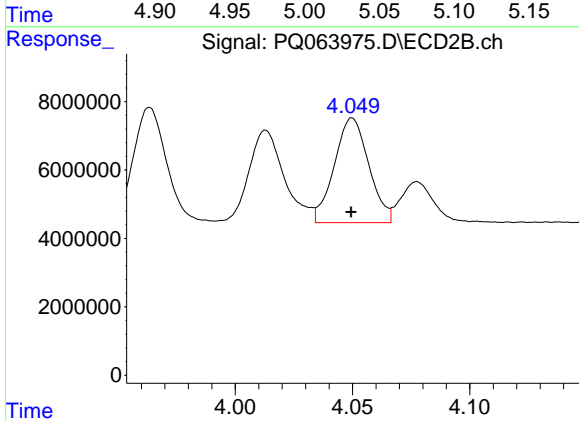
R.T.: 4.013 min  
 Delta R.T.: 0.000 min  
 Response: 28540118  
 Conc: 218.65 ng/ml



#23 AR-1248-3

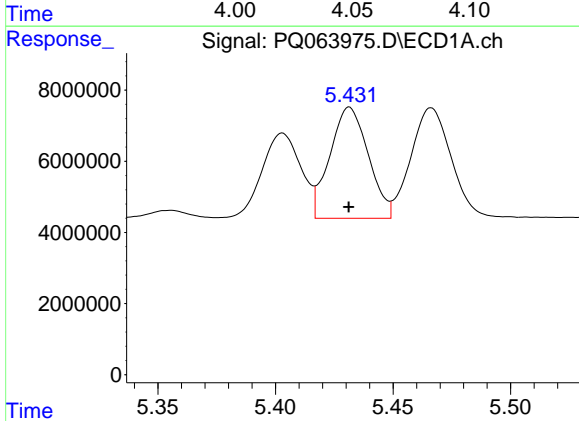
R.T.: 5.035 min  
 Delta R.T.: 0.000 min  
 Response: 35951964  
 Conc: 229.20 ng/ml

Instrument :  
 ECD\_Q  
 ClientSampleId :



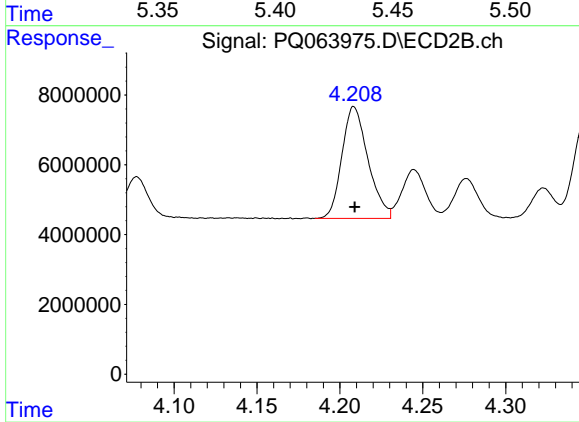
#23 AR-1248-3

R.T.: 4.050 min  
 Delta R.T.: 0.000 min  
 Response: 31382102  
 Conc: 252.31 ng/ml



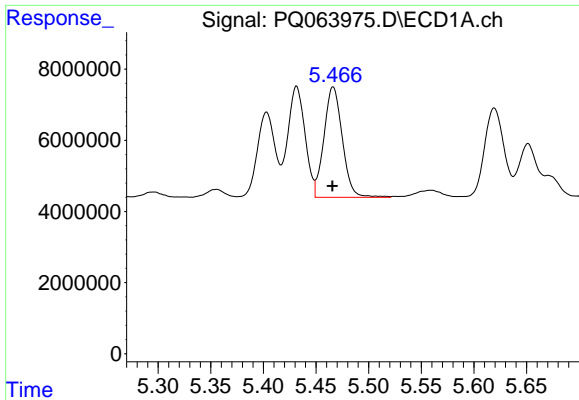
#24 AR-1248-4

R.T.: 5.431 min  
 Delta R.T.: 0.000 min  
 Response: 35593711  
 Conc: 207.33 ng/ml



#24 AR-1248-4

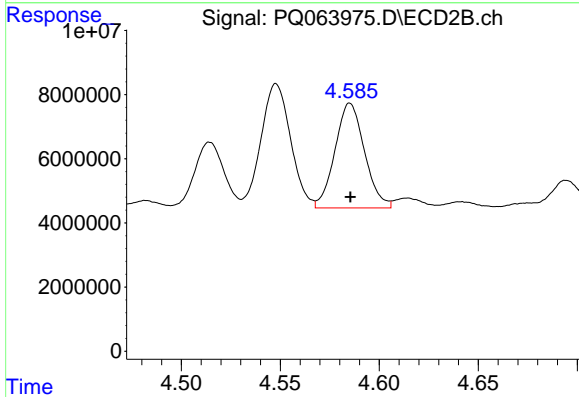
R.T.: 4.209 min  
 Delta R.T.: 0.000 min  
 Response: 35029939  
 Conc: 231.45 ng/ml



#25 AR-1248-5

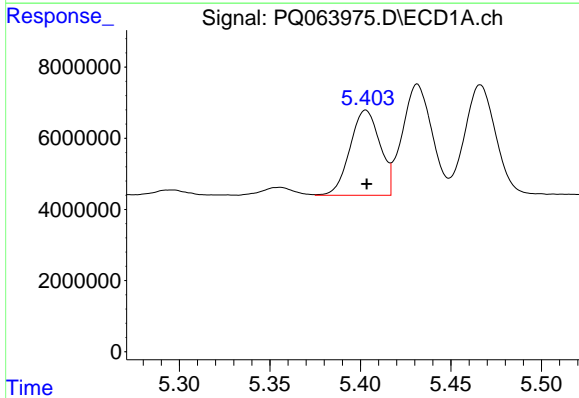
R.T.: 5.466 min  
 Delta R.T.: 0.000 min  
 Response: 37642712  
 Conc: 224.27 ng/ml

Instrument :  
 ECD\_Q  
 ClientSampleId :



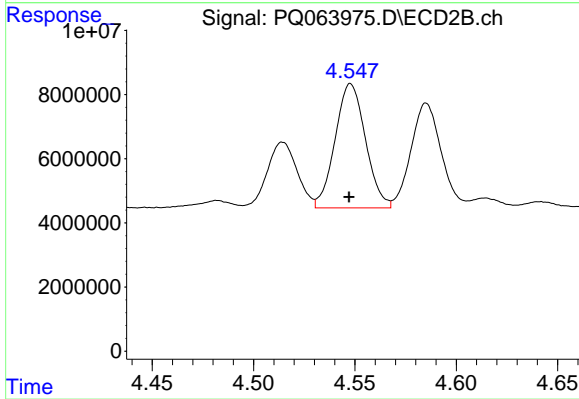
#25 AR-1248-5

R.T.: 4.585 min  
 Delta R.T.: 0.000 min  
 Response: 33941284  
 Conc: 229.33 ng/ml



#26 AR-1254-1

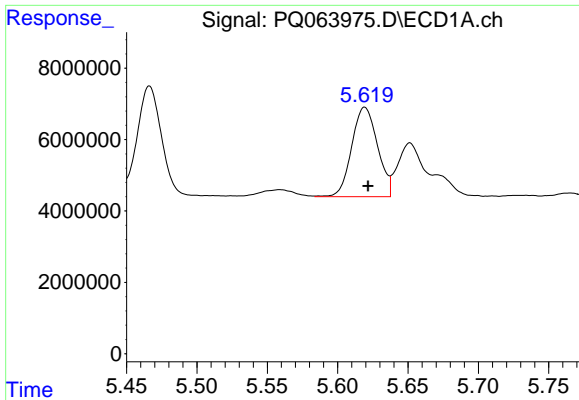
R.T.: 5.403 min  
 Delta R.T.: 0.000 min  
 Response: 27572305  
 Conc: 158.88 ng/ml



#26 AR-1254-1

R.T.: 4.548 min  
 Delta R.T.: 0.000 min  
 Response: 40442154  
 Conc: 184.81 ng/ml

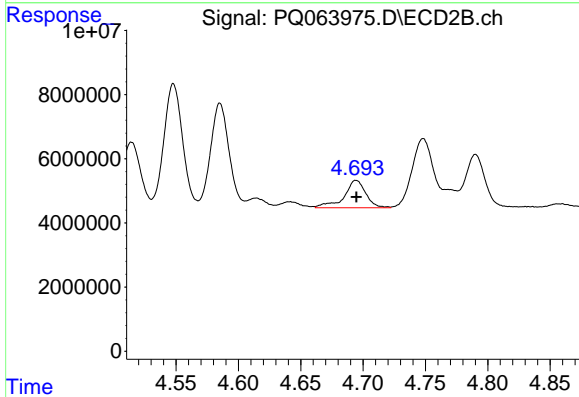




#27 AR-1254-2

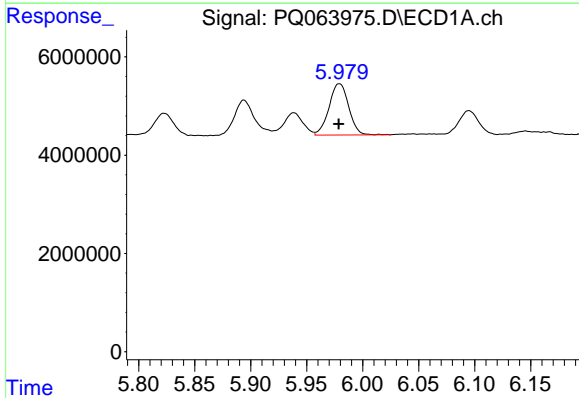
R.T.: 5.619 min  
 Delta R.T.: -0.002 min  
 Response: 32165466  
 Conc: 119.67 ng/ml

Instrument :  
 ECD\_Q  
 ClientSampleId :



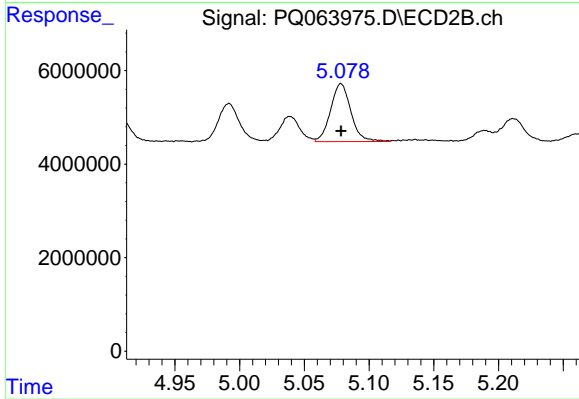
#27 AR-1254-2

R.T.: 4.694 min  
 Delta R.T.: 0.000 min  
 Response: 10451126  
 Conc: 54.85 ng/ml



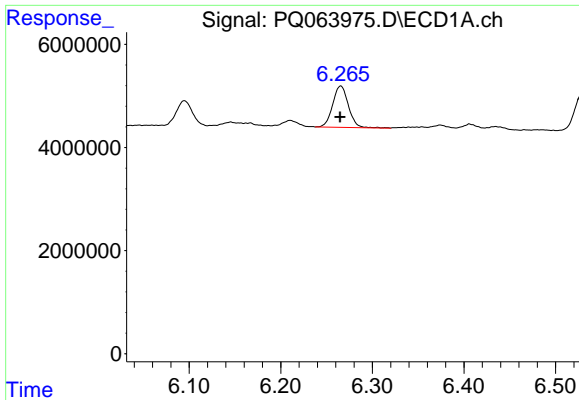
#28 AR-1254-3

R.T.: 5.979 min  
 Delta R.T.: 0.000 min  
 Response: 12817839  
 Conc: 46.64 ng/ml



#28 AR-1254-3

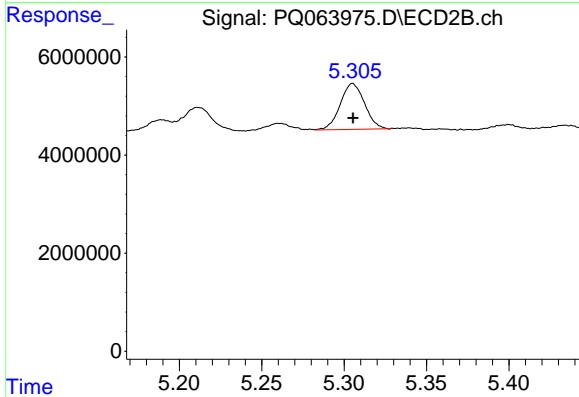
R.T.: 5.078 min  
 Delta R.T.: 0.000 min  
 Response: 13518013  
 Conc: 45.51 ng/ml



#29 AR-1254-4

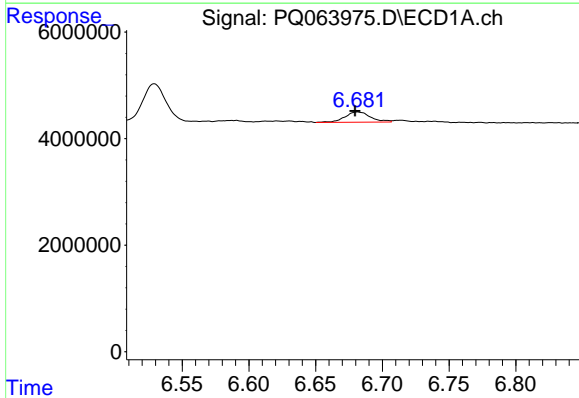
R.T.: 6.266 min  
 Delta R.T.: 0.000 min  
 Response: 9600014  
 Conc: 48.09 ng/ml

Instrument :  
 ECD\_Q  
 ClientSampleId :



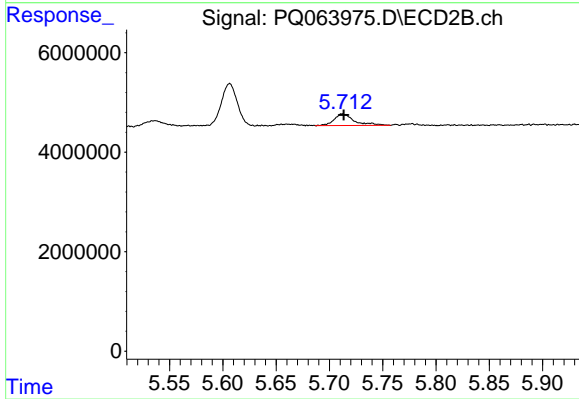
#29 AR-1254-4

R.T.: 5.305 min  
 Delta R.T.: 0.000 min  
 Response: 9575952  
 Conc: 50.73 ng/ml



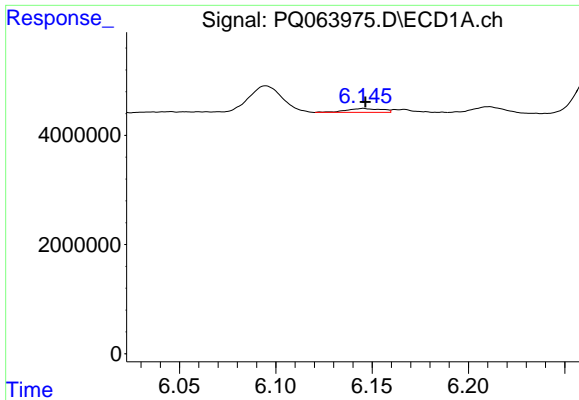
#30 AR-1254-5

R.T.: 6.681 min  
 Delta R.T.: 0.002 min  
 Response: 2552901  
 Conc: 11.67 ng/ml



#30 AR-1254-5

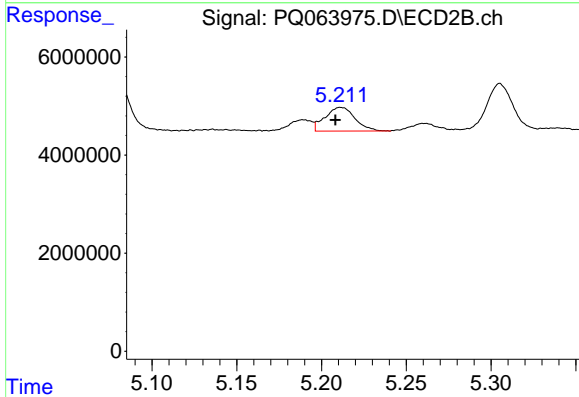
R.T.: 5.712 min  
 Delta R.T.: -0.001 min  
 Response: 3095261  
 Conc: 11.38 ng/ml



#31 AR-1260-1

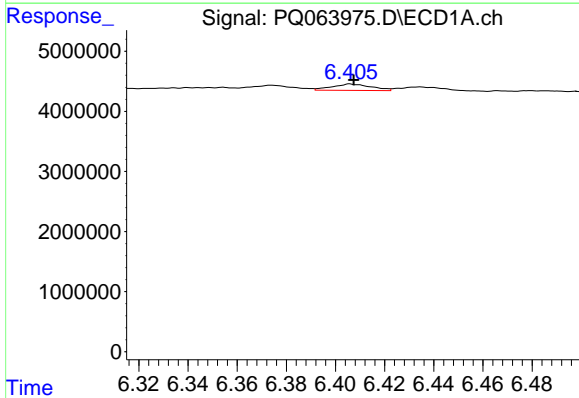
R.T.: 6.145 min  
 Delta R.T.: -0.001 min  
 Response: 921784  
 Conc: 4.21 ng/ml

Instrument :  
 ECD\_Q  
 ClientSampleId :



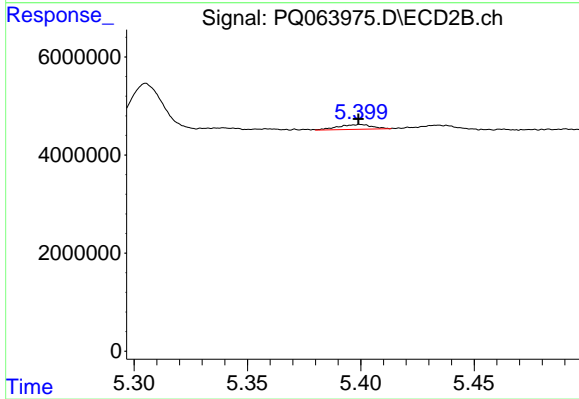
#31 AR-1260-1

R.T.: 5.212 min  
 Delta R.T.: 0.003 min  
 Response: 5941972  
 Conc: 28.28 ng/ml



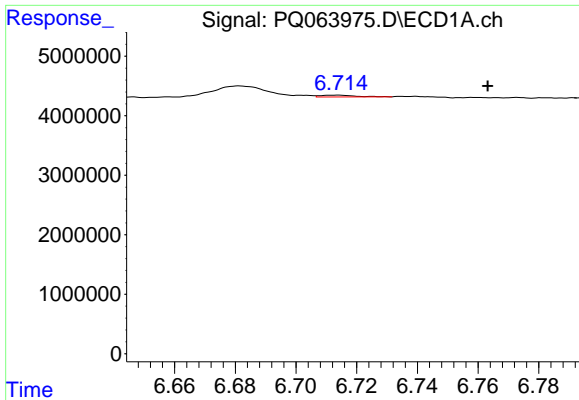
#32 AR-1260-2

R.T.: 6.406 min  
 Delta R.T.: -0.001 min  
 Response: 1177802  
 Conc: 4.52 ng/ml



#32 AR-1260-2

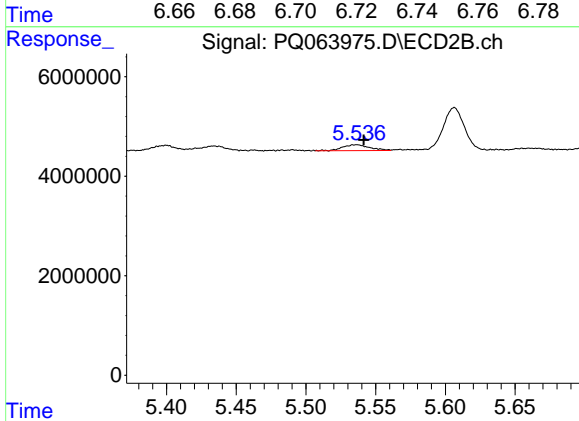
R.T.: 5.400 min  
 Delta R.T.: 0.000 min  
 Response: 993112  
 Conc: 3.99 ng/ml



#33 AR-1260-3

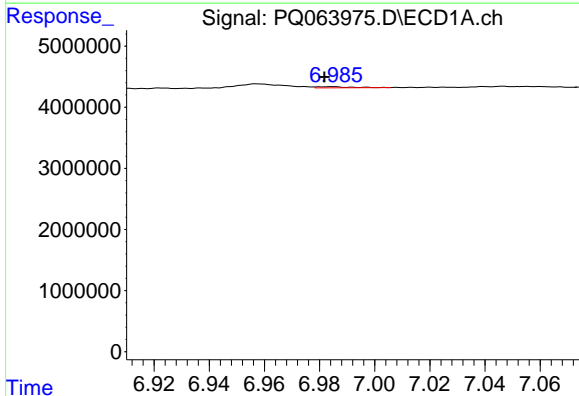
R.T.: 6.713 min  
 Delta R.T.: -0.050 min  
 Response: 240882  
 Conc: 1.26 ng/ml

Instrument :  
 ECD\_Q  
 ClientSampleId :



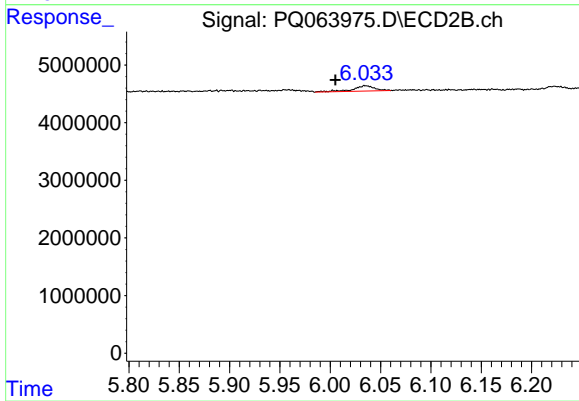
#33 AR-1260-3

R.T.: 5.536 min  
 Delta R.T.: -0.005 min  
 Response: 1545856  
 Conc: 6.51 ng/ml



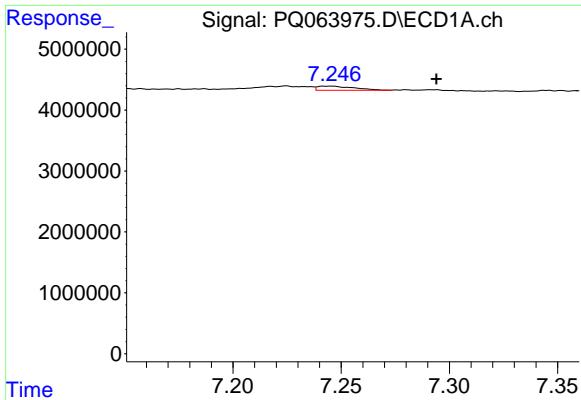
#34 AR-1260-4

R.T.: 6.985 min  
 Delta R.T.: 0.003 min  
 Response: 156611  
 Conc: 0.73 ng/ml



#34 AR-1260-4

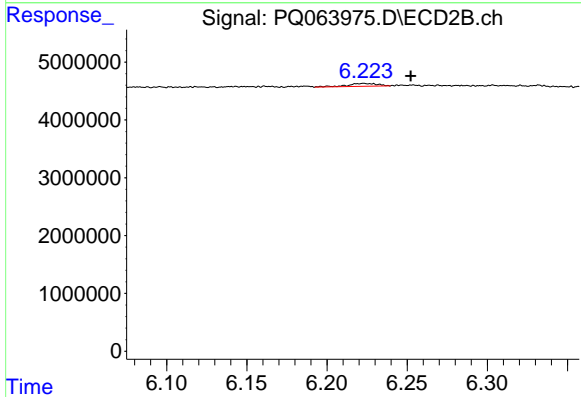
R.T.: 6.035 min  
 Delta R.T.: 0.030 min  
 Response: 1382483  
 Conc: 6.83 ng/ml



#35 AR-1260-5

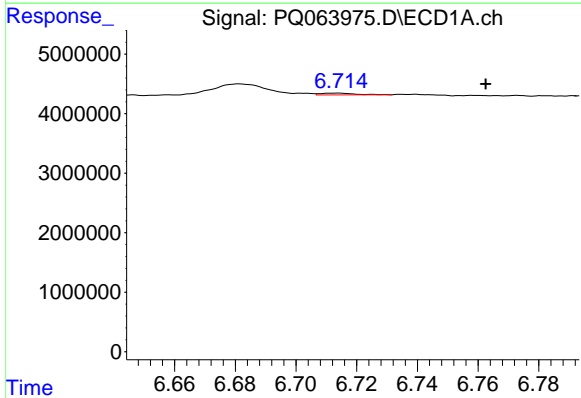
R.T.: 7.245 min  
 Delta R.T.: -0.049 min  
 Response: 767044  
 Conc: 1.90 ng/ml

Instrument :  
 ECD\_Q  
 ClientSampleId :



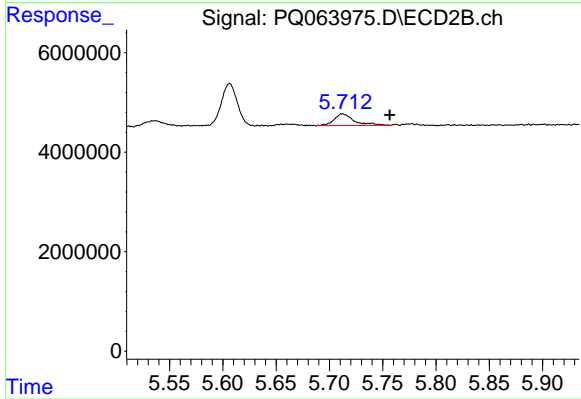
#35 AR-1260-5

R.T.: 6.223 min  
 Delta R.T.: -0.029 min  
 Response: 660153  
 Conc: 1.41 ng/ml



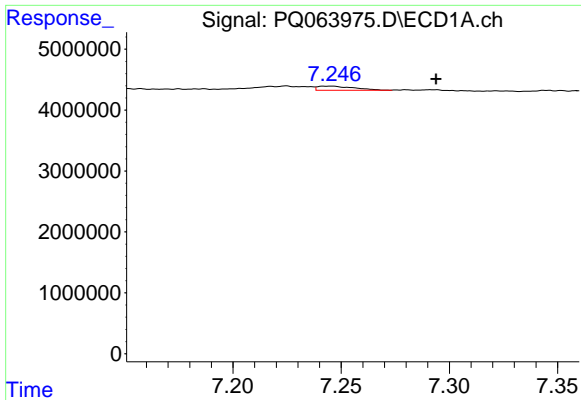
#36 AR-1262-1

R.T.: 6.713 min  
 Delta R.T.: -0.049 min  
 Response: 240882  
 Conc: 0.85 ng/ml



#36 AR-1262-1

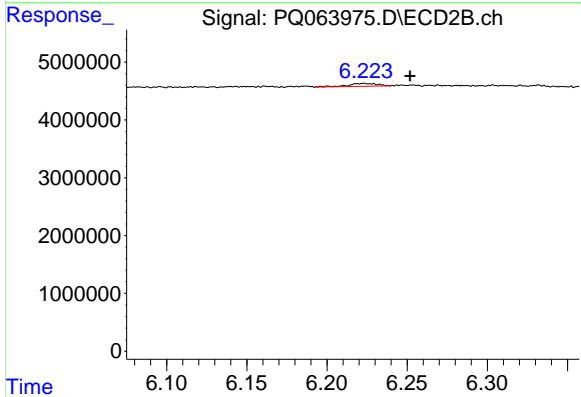
R.T.: 5.712 min  
 Delta R.T.: -0.044 min  
 Response: 3095261  
 Conc: 10.68 ng/ml



#37 AR-1262-2

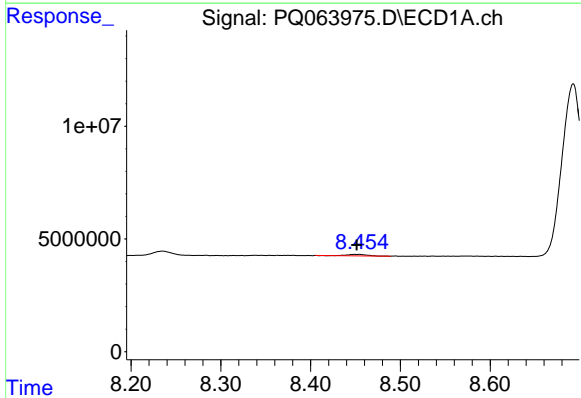
R.T.: 7.245 min  
 Delta R.T.: -0.049 min  
 Response: 767044  
 Conc: 1.67 ng/ml

Instrument :  
 ECD\_Q  
 ClientSampleId :



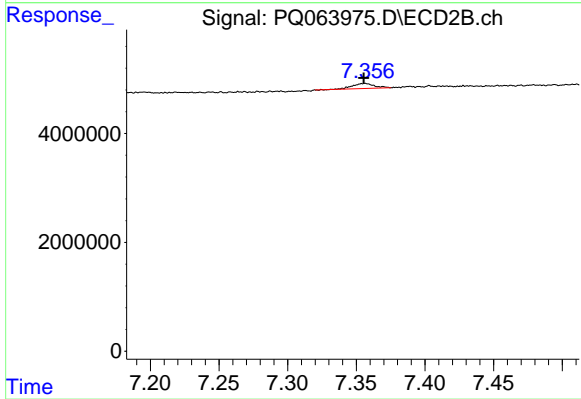
#37 AR-1262-2

R.T.: 6.223 min  
 Delta R.T.: -0.029 min  
 Response: 660153  
 Conc: 1.26 ng/ml



#45 AR-1268-5

R.T.: 8.450 min  
 Delta R.T.: -0.002 min  
 Response: 1098466  
 Conc: 0.89 ng/ml



#45 AR-1268-5

R.T.: 7.356 min  
 Delta R.T.: 0.000 min  
 Response: 1017554  
 Conc: 0.56 ng/ml