

Data Path : Z:\pestpcbsrv\HPCHEM1\ECD_Q\Data\PQ111218\
 Data File : PQ034492.D
 Signal(s) : Signal #1: ECD1A.ch Signal #2: ECD2B.ch
 Acq On : 13 Nov 2018 02:30
 Operator : SM\SJ
 Sample : J5902-01
 Misc :
 ALS Vial : 30 Sample Multiplier: 1

Instrument :
 ECD_Q
 ClientSampleId :
 FS-CONCRETE

Integration File signal 1: autoint1.e
 Integration File signal 2: autoint2.e
 Quant Time: Nov 13 04:20:11 2018
 Quant Method : Z:\pestpcbsrv\HPCHEM1\ECD_Q\Method\PQ110618.M
 Quant Title : GC EXTRACTABLES
 QLast Update : Fri Nov 09 08:12:53 2018
 Response via : Initial Calibration
 Integrator: ChemStation

Volume Inj. : 2 µl
 Signal #1 Phase : ZB-MR1 Signal #2 Phase: ZB-MR2
 Signal #1 Info : 30Mx0.32mmx 0.50µ Signal #2 Info : 30M x 0.32mm x 0.25µm

Compound	RT#1	RT#2	Resp#1	Resp#2	ng/ml	ng/ml
----------	------	------	--------	--------	-------	-------

 System Monitoring Compounds

1) SA Tetrachlo...	4.544	3.826	62169188	40068767	21.209	20.993
2) SA Decachlor...	10.341	8.853	50120875	34930464	19.525	17.775

Target Compounds

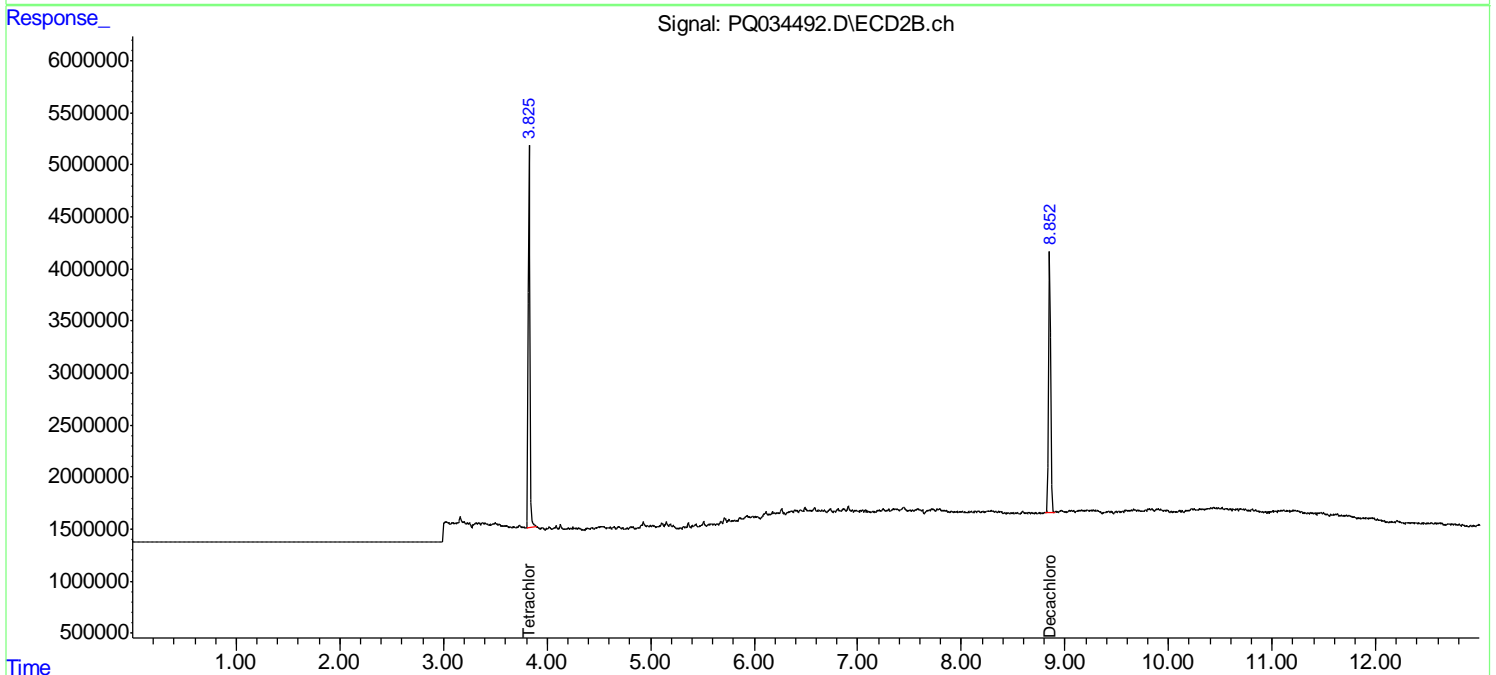
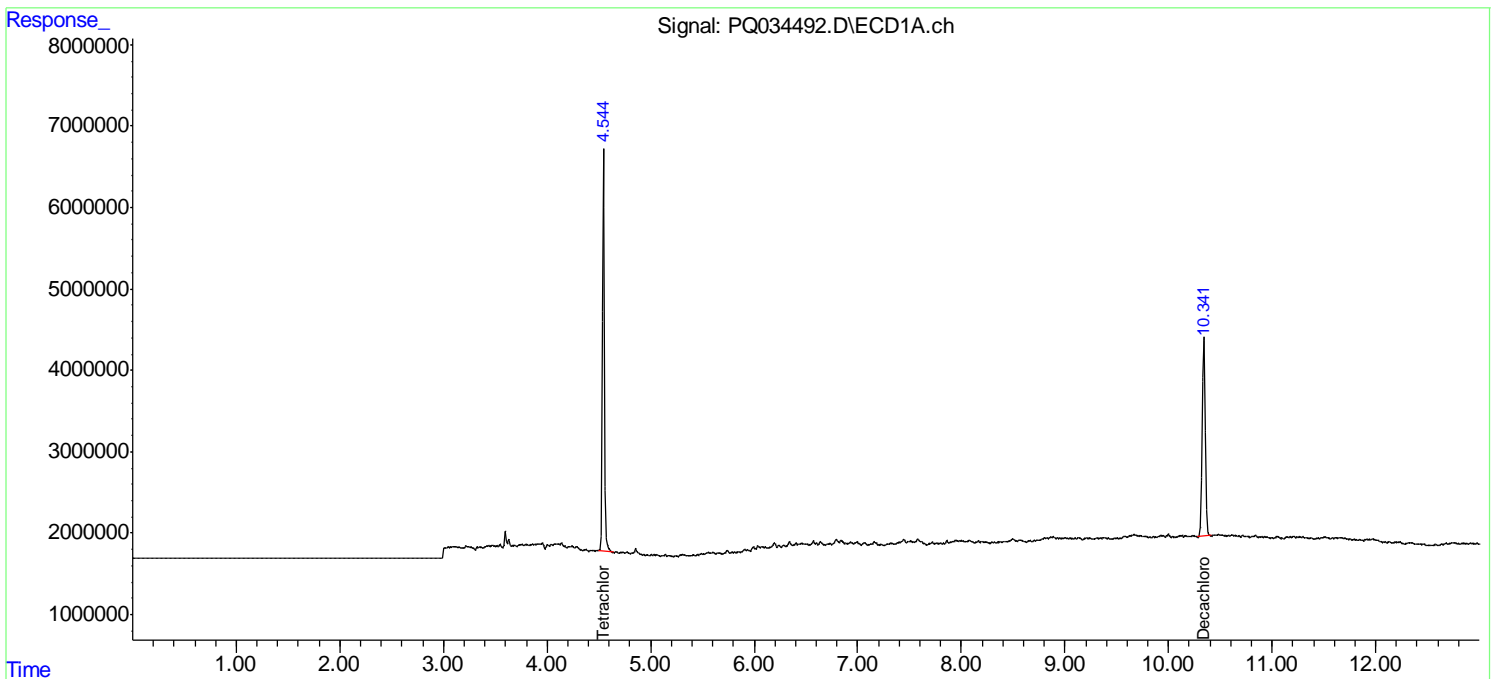
(f)=RT Delta > 1/2 Window (#)=Amounts differ by > 25% (m)=manual int.

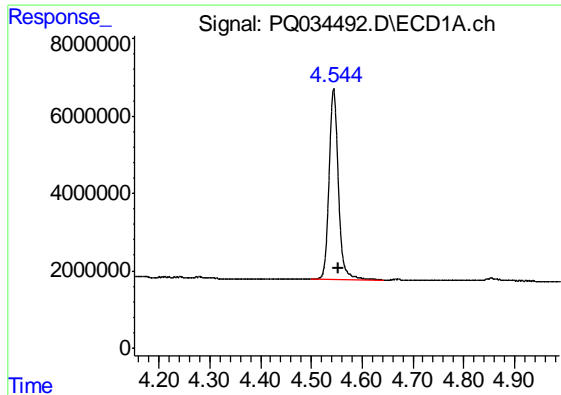
Data Path : Z:\pestpcbsrv\HPCHEM1\ECD_Q\Data\PQ111218\
 Data File : PQ034492.D
 Signal(s) : Signal #1: ECD1A.ch Signal #2: ECD2B.ch
 Acq On : 13 Nov 2018 02:30
 Operator : SM\SJ
 Sample : J5902-01
 Misc :
 ALS Vial : 30 Sample Multiplier: 1

Instrument :
 ECD_Q
 ClientSampleId :
 FS-CONCRETE

Integration File signal 1: autoint1.e
 Integration File signal 2: autoint2.e
 Quant Time: Nov 13 04:20:11 2018
 Quant Method : Z:\pestpcbsrv\HPCHEM1\ECD_Q\Method\PQ110618.M
 Quant Title : GC EXTRACTABLES
 QLast Update : Fri Nov 09 08:12:53 2018
 Response via : Initial Calibration
 Integrator: ChemStation

Volume Inj. : 2 µl
 Signal #1 Phase : ZB-MR1 Signal #2 Phase: ZB-MR2
 Signal #1 Info : 30Mx0.32mmx 0.50µ Signal #2 Info : 30M x 0.32mm x 0.25µm

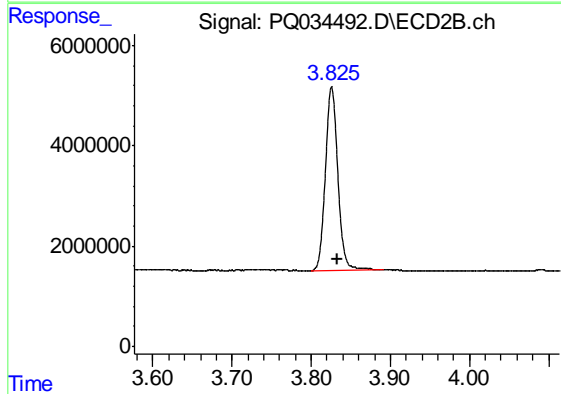




#1 Tetrachloro-m-xylene

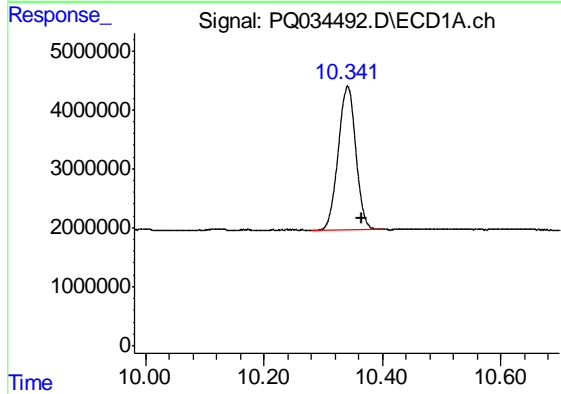
R.T.: 4.544 min
 Delta R.T.: -0.010 min
 Response: 62169188
 Conc: 21.21 ng/ml

Instrument :
 ECD_Q
 ClientSampleId :
 FS-CONCRETE



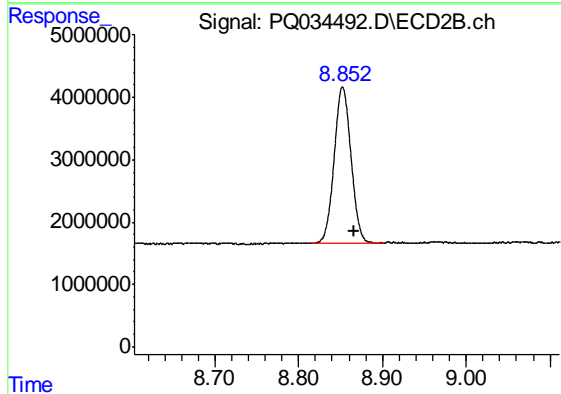
#1 Tetrachloro-m-xylene

R.T.: 3.826 min
 Delta R.T.: -0.006 min
 Response: 40068767
 Conc: 20.99 ng/ml



#2 Decachlorobiphenyl

R.T.: 10.341 min
 Delta R.T.: -0.024 min
 Response: 50120875
 Conc: 19.53 ng/ml



#2 Decachlorobiphenyl

R.T.: 8.853 min
 Delta R.T.: -0.014 min
 Response: 34930464
 Conc: 17.78 ng/ml