

Data Path : Z:\pestpcbsrv\HPCHEM1\ECD\_Q\Data\PQ111218\  
 Data File : PQ034500.D  
 Signal(s) : Signal #1: ECD1A.ch Signal #2: ECD2B.ch  
 Acq On : 13 Nov 2018 04:41  
 Operator : SM\SJ  
 Sample : PB114750BS  
 Misc :  
 ALS Vial : 38 Sample Multiplier: 1

**Instrument :**  
 ECD\_Q  
**ClientSampleId :**  
 PB114750BS

**Manual Integrations**  
**APPROVED**  
 Sohil  
 11/13/2018 4:33:08 PM

Integration File signal 1: autoint1.e  
 Integration File signal 2: autoint2.e  
 Quant Time: Nov 13 06:01:23 2018  
 Quant Method : Z:\pestpcbsrv\HPCHEM1\ECD\_Q\Method\PQ110618.M  
 Quant Title : GC EXTRACTABLES  
 QLast Update : Fri Nov 09 08:12:53 2018  
 Response via : Initial Calibration  
 Integrator: ChemStation

Volume Inj. : 2 µl  
 Signal #1 Phase : ZB-MR1 Signal #2 Phase: ZB-MR2  
 Signal #1 Info : 30Mx0.32mmx 0.50µ Signal #2 Info : 30M x 0.32mm x 0.25µm

| Compound                    | RT#1   | RT#2  | Resp#1   | Resp#2   | ng/ml    | ng/ml    |
|-----------------------------|--------|-------|----------|----------|----------|----------|
| -----                       |        |       |          |          |          |          |
| System Monitoring Compounds |        |       |          |          |          |          |
| 1) SA Tetrachlo...          | 4.541  | 3.826 | 66652163 | 45050281 | 22.738   | 23.603   |
| 2) SA Decachlor...          | 10.335 | 8.851 | 48347384 | 35685203 | 18.834   | 18.159   |
| Target Compounds            |        |       |          |          |          |          |
| 3) L1 AR-1016-1             | 5.713  | 4.912 | 20457025 | 15137504 | 215.833m | 214.301m |
| 4) L1 AR-1016-2             | 5.736  | 4.931 | 28714193 | 20392555 | 203.421m | 202.286m |
| 5) L1 AR-1016-3             | 5.799  | 5.109 | 17397875 | 10831750 | 204.746  | 210.923m |
| 6) L1 AR-1016-4             | 5.898  | 5.147 | 13930641 | 8420498  | 205.197m | 204.607m |
| 7) L1 AR-1016-5             | 6.190  | 5.363 | 13234888 | 11151400 | 187.622m | 209.091m |
| 31) L7 AR-1260-1            | 7.315  | 6.392 | 24396408 | 20952082 | 176.941  | 182.050  |
| 32) L7 AR-1260-2            | 7.571  | 6.579 | 29504900 | 25546220 | 171.425  | 179.925  |
| 33) L7 AR-1260-3            | 7.930  | 6.733 | 18163600 | 23185180 | 178.318  | 175.982m |
| 34) L7 AR-1260-4            | 8.161  | 7.203 | 22422004 | 16773678 | 172.590  | 184.855  |
| 35) L7 AR-1260-5            | 8.489  | 7.444 | 42854002 | 39476141 | 171.832  | 169.863  |
| -----                       |        |       |          |          |          |          |

(f)=RT Delta > 1/2 Window (#)=Amounts differ by > 25% (m)=manual int.

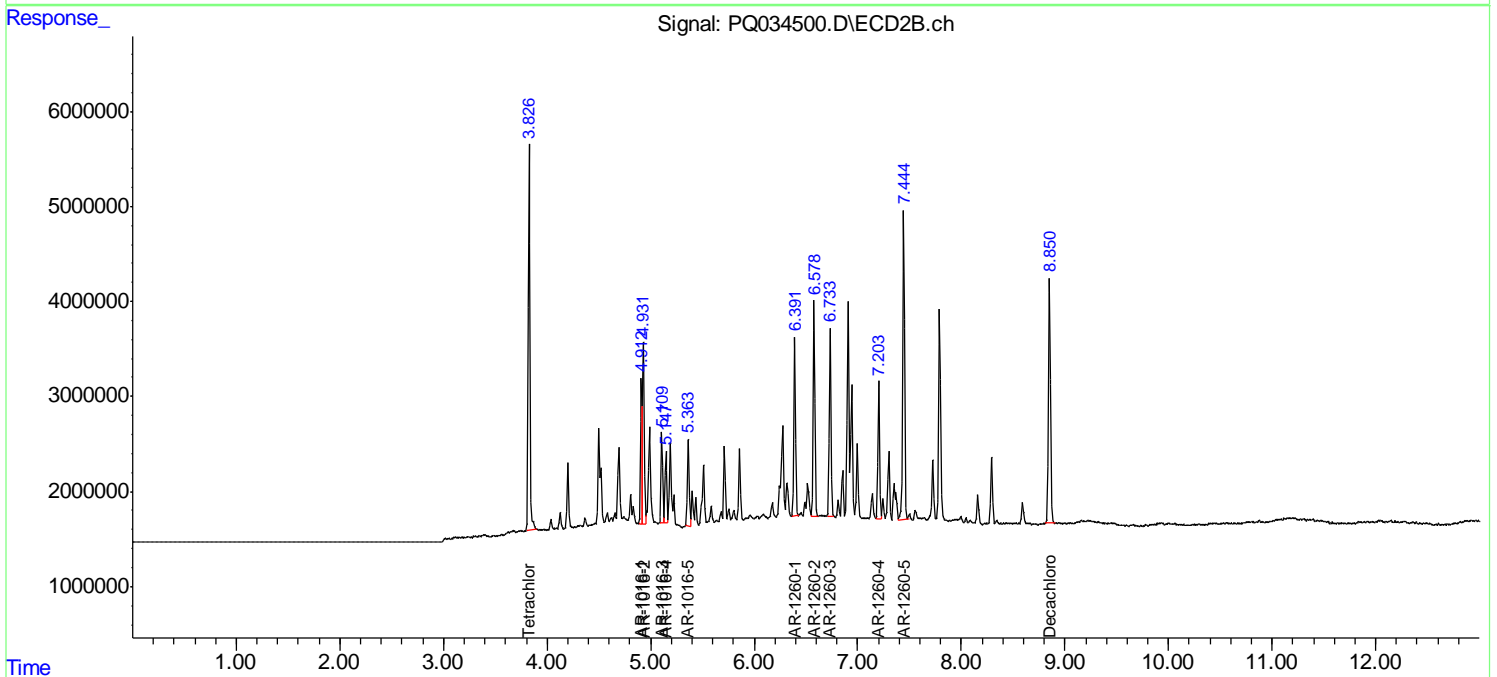
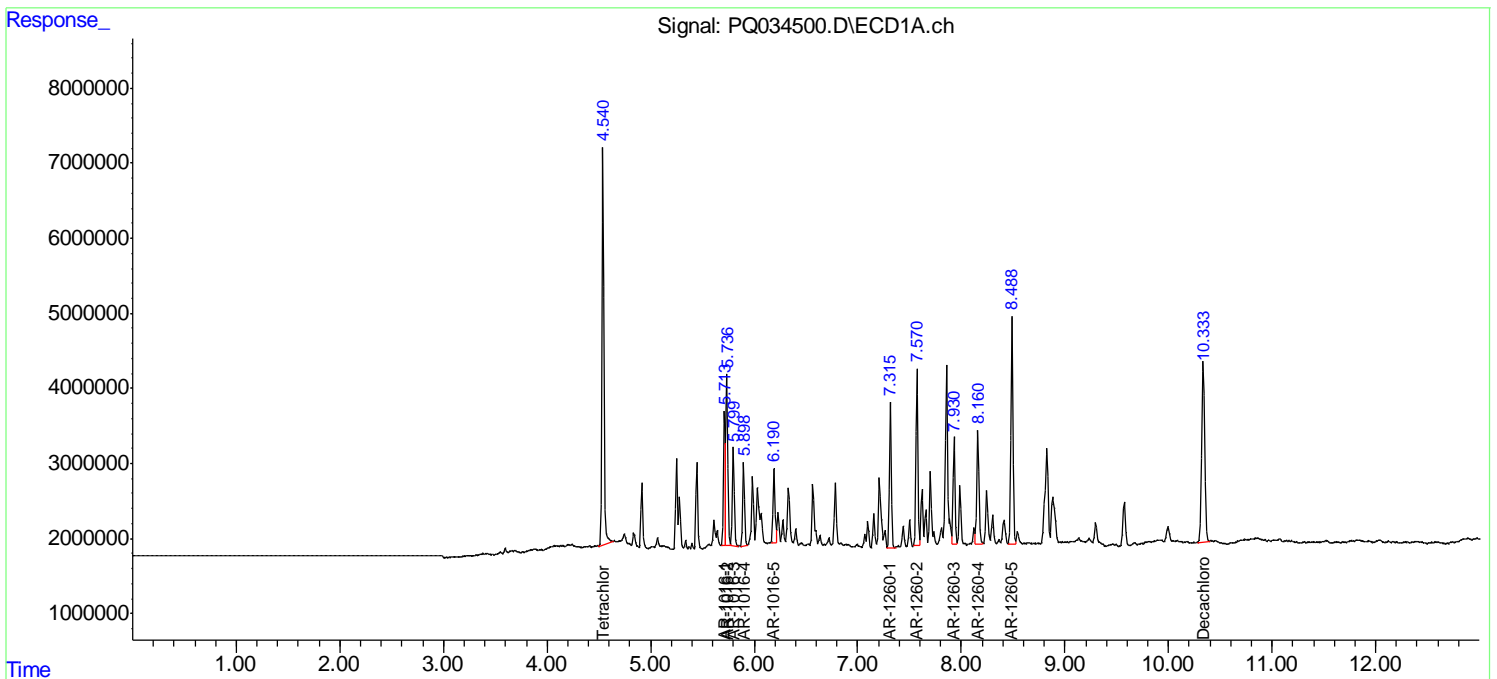
Data Path : Z:\pestpcbsrv\HPCHEM1\ECD\_Q\Data\PQ111218\  
 Data File : PQ034500.D  
 Signal(s) : Signal #1: ECD1A.ch Signal #2: ECD2B.ch  
 Acq On : 13 Nov 2018 04:41  
 Operator : SM\SJ  
 Sample : PB114750BS  
 Misc :  
 ALS Vial : 38 Sample Multiplier: 1

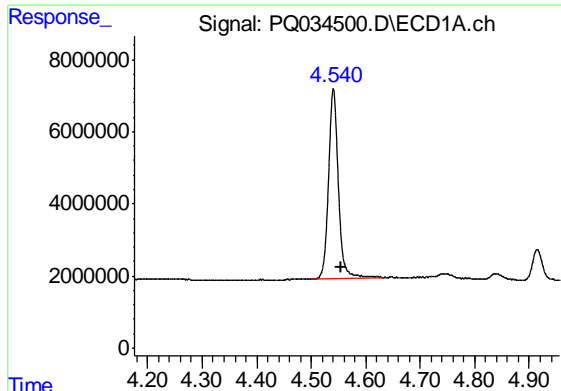
**Instrument :**  
 ECD\_Q  
**Client Sampled :**  
 PB114750BS

**Manual Integrations**  
**APPROVED**  
 Sohil  
 11/13/2018 4:33:08 PM

Integration File signal 1: autoint1.e  
 Integration File signal 2: autoint2.e  
 Quant Time: Nov 13 06:01:23 2018  
 Quant Method : Z:\pestpcbsrv\HPCHEM1\ECD\_Q\Method\PQ110618.M  
 Quant Title : GC EXTRACTABLES  
 QLast Update : Fri Nov 09 08:12:53 2018  
 Response via : Initial Calibration  
 Integrator: ChemStation

Volume Inj. : 2 µl  
 Signal #1 Phase : ZB-MR1 Signal #2 Phase: ZB-MR2  
 Signal #1 Info : 30Mx0.32mmx 0.50µ Signal #2 Info : 30M x 0.32mm x 0.25µm



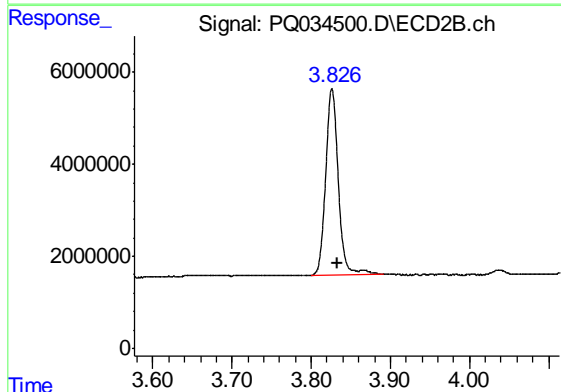


#1 Tetrachloro-m-xylene

R.T.: 4.541 min  
 Delta R.T.: -0.013 min  
 Response: 66652163  
 Conc: 22.74 ng/ml

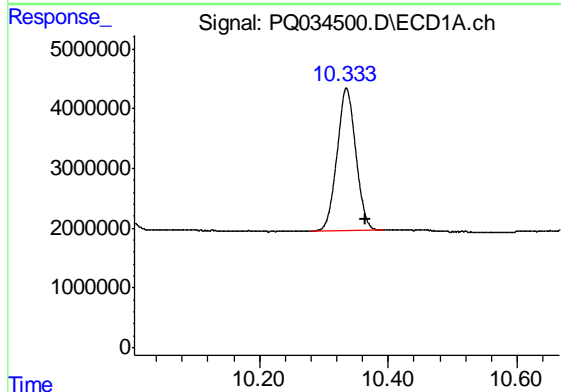
Instrument :  
 ECD\_Q  
 ClientSampled :  
 PB114750BS

Manual Integrations  
 APPROVED  
 Sohil  
 11/13/2018 4:33:08 PM



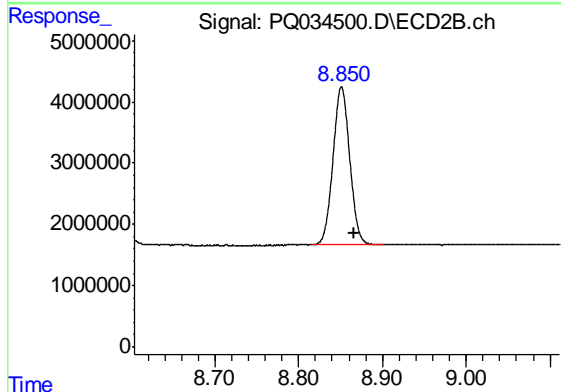
#1 Tetrachloro-m-xylene

R.T.: 3.826 min  
 Delta R.T.: -0.006 min  
 Response: 45050281  
 Conc: 23.60 ng/ml



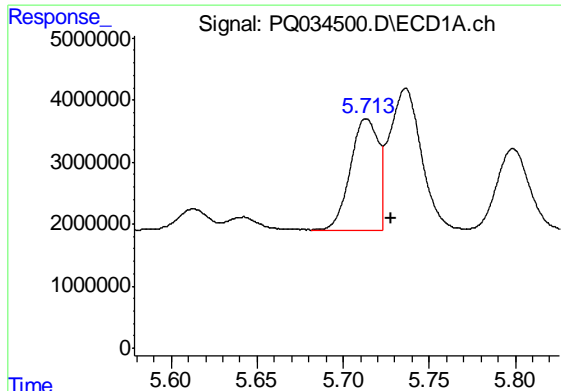
#2 Decachlorobiphenyl

R.T.: 10.335 min  
 Delta R.T.: -0.031 min  
 Response: 48347384  
 Conc: 18.83 ng/ml



#2 Decachlorobiphenyl

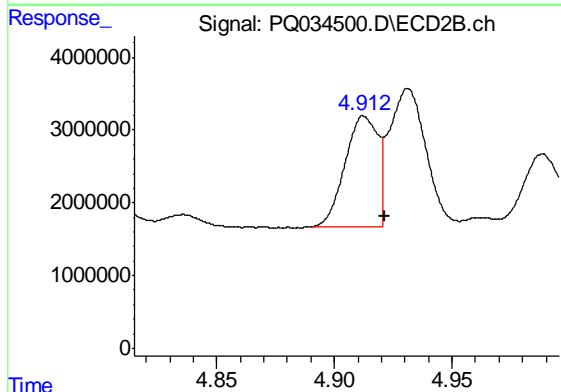
R.T.: 8.851 min  
 Delta R.T.: -0.015 min  
 Response: 35685203  
 Conc: 18.16 ng/ml



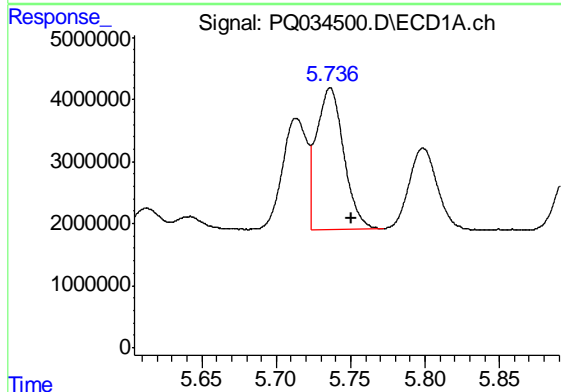
#3 AR-1016-1  
 R.T.: 5.713 min  
 Delta R.T.: -0.015 min  
 Response: 20457025  
 Conc: 215.83 ng/ml m

**Instrument :**  
 ECD\_Q  
**ClientSampled :**  
 PB114750BS

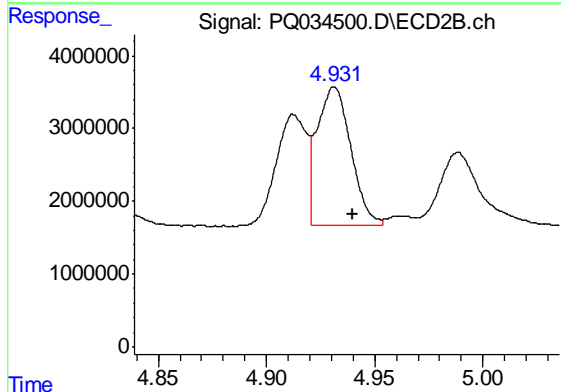
**Manual Integrations**  
**APPROVED**  
 Sohil  
 11/13/2018 4:33:08 PM



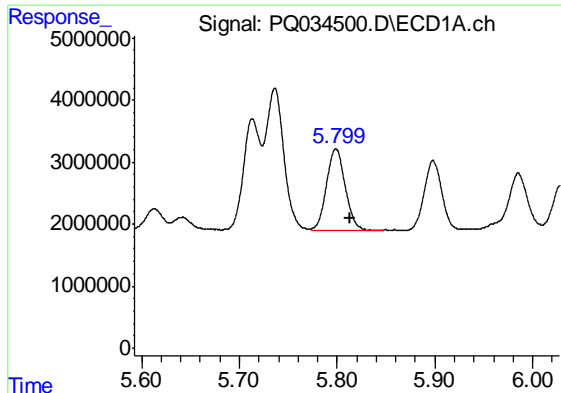
#3 AR-1016-1  
 R.T.: 4.912 min  
 Delta R.T.: -0.010 min  
 Response: 15137504  
 Conc: 214.30 ng/ml m



#4 AR-1016-2  
 R.T.: 5.736 min  
 Delta R.T.: -0.014 min  
 Response: 28714193  
 Conc: 203.42 ng/ml m



#4 AR-1016-2  
 R.T.: 4.931 min  
 Delta R.T.: -0.009 min  
 Response: 20392555  
 Conc: 202.29 ng/ml m

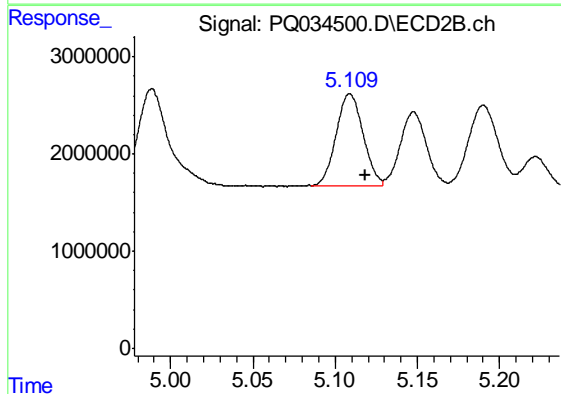


#5 AR-1016-3

R.T.: 5.799 min  
 Delta R.T.: -0.014 min  
 Response: 17397875  
 Conc: 204.75 ng/ml

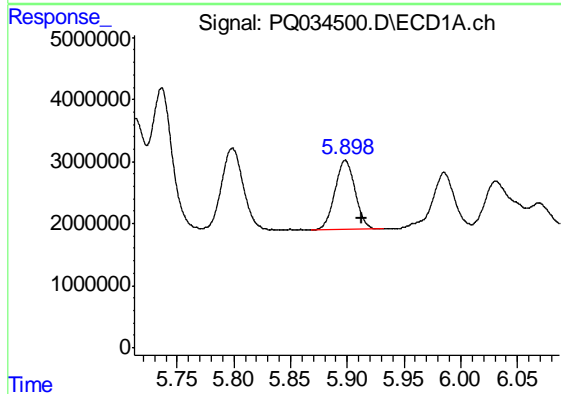
**Instrument :**  
 ECD\_Q  
**ClientSampled :**  
 PB114750BS

**Manual Integrations**  
**APPROVED**  
 Sohil  
 11/13/2018 4:33:08 PM



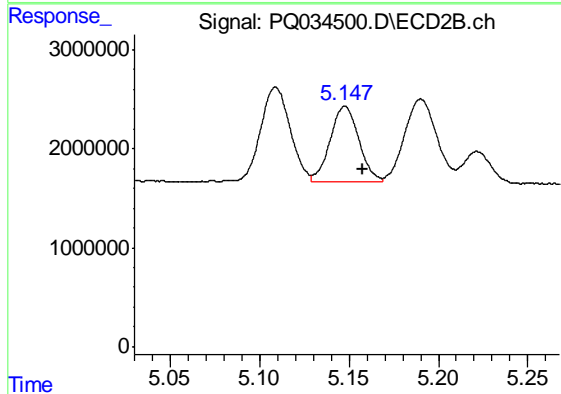
#5 AR-1016-3

R.T.: 5.109 min  
 Delta R.T.: -0.010 min  
 Response: 10831750  
 Conc: 210.92 ng/ml m



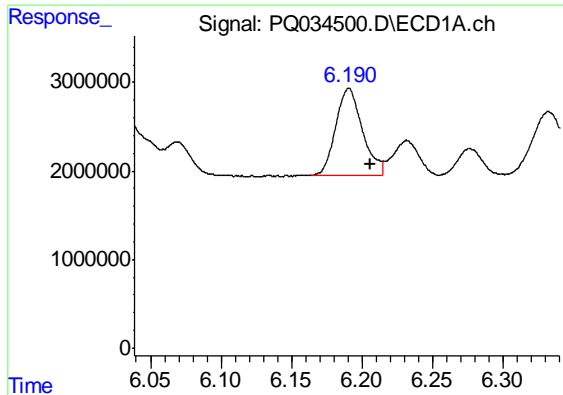
#6 AR-1016-4

R.T.: 5.898 min  
 Delta R.T.: -0.014 min  
 Response: 13930641  
 Conc: 205.20 ng/ml m



#6 AR-1016-4

R.T.: 5.147 min  
 Delta R.T.: -0.011 min  
 Response: 8420498  
 Conc: 204.61 ng/ml m



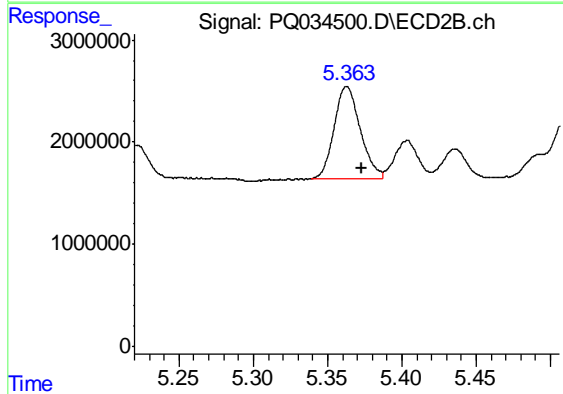
#7 AR-1016-5

R.T.: 6.190 min  
 Delta R.T.: -0.016 min  
 Response: 13234888  
 Conc: 187.62 ng/ml m

Instrument :  
 ECD\_Q  
 ClientSampled :  
 PB114750BS

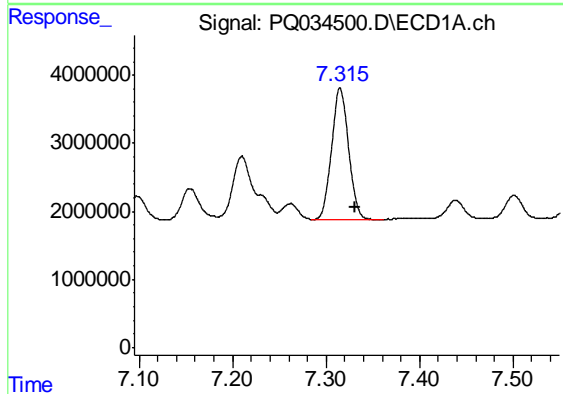
Manual Integrations  
 APPROVED

Sohil  
 11/13/2018 4:33:08 PM



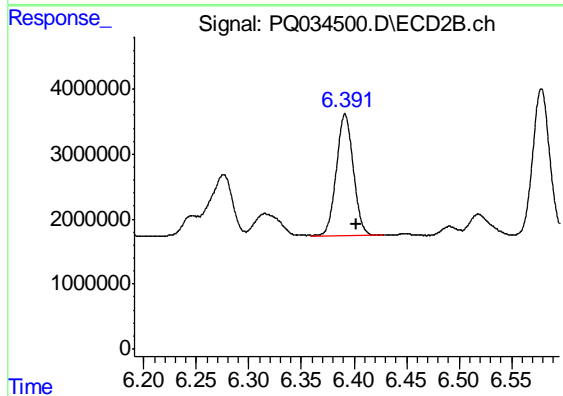
#7 AR-1016-5

R.T.: 5.363 min  
 Delta R.T.: -0.010 min  
 Response: 11151400  
 Conc: 209.09 ng/ml m



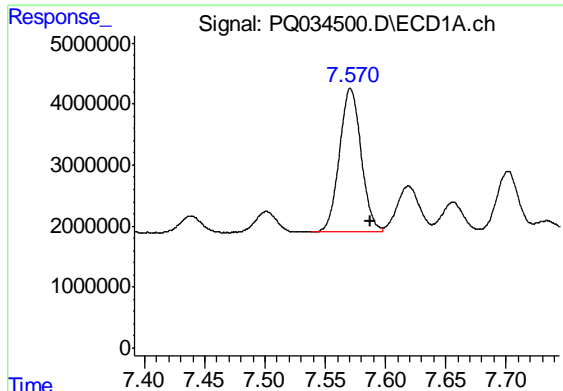
#31 AR-1260-1

R.T.: 7.315 min  
 Delta R.T.: -0.016 min  
 Response: 24396408  
 Conc: 176.94 ng/ml



#31 AR-1260-1

R.T.: 6.392 min  
 Delta R.T.: -0.011 min  
 Response: 20952082  
 Conc: 182.05 ng/ml

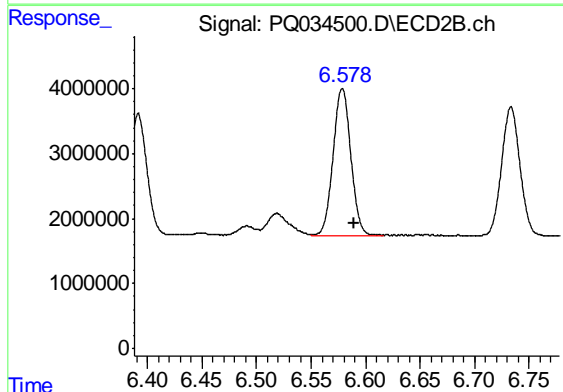


#32 AR-1260-2

R.T.: 7.571 min  
 Delta R.T.: -0.016 min  
 Response: 29504900  
 Conc: 171.42 ng/ml

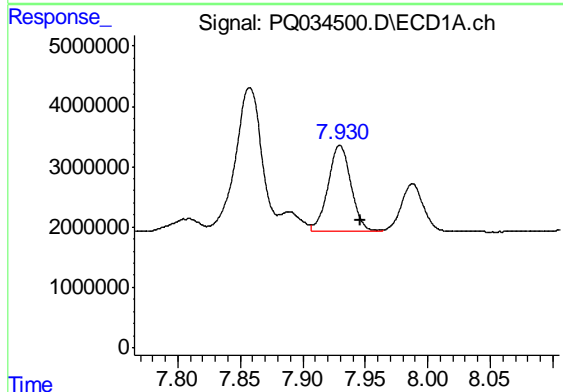
**Instrument :**  
 ECD\_Q  
**ClientSampled :**  
 PB114750BS

**Manual Integrations**  
**APPROVED**  
 Sohil  
 11/13/2018 4:33:08 PM



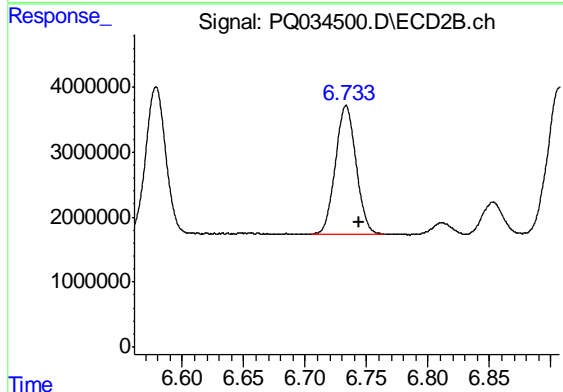
#32 AR-1260-2

R.T.: 6.579 min  
 Delta R.T.: -0.010 min  
 Response: 25546220  
 Conc: 179.92 ng/ml



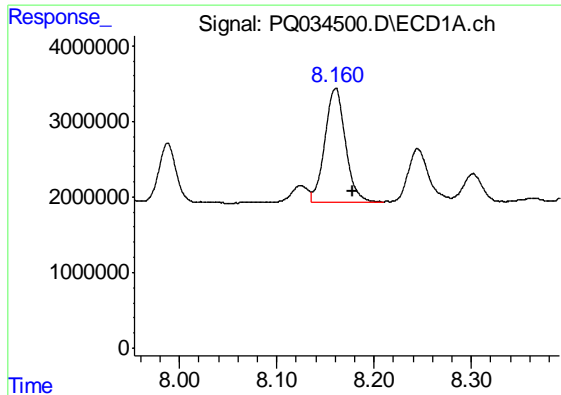
#33 AR-1260-3

R.T.: 7.930 min  
 Delta R.T.: -0.017 min  
 Response: 18163600  
 Conc: 178.32 ng/ml



#33 AR-1260-3

R.T.: 6.733 min  
 Delta R.T.: -0.011 min  
 Response: 23185180  
 Conc: 175.98 ng/ml m



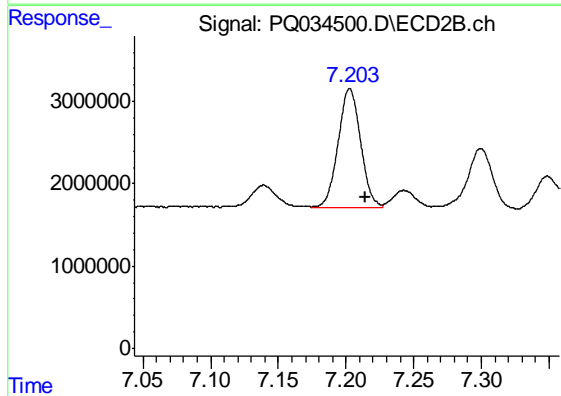
#34 AR-1260-4

R.T.: 8.161 min  
Delta R.T.: -0.018 min  
Response: 22422004  
Conc: 172.59 ng/ml

Instrument :  
ECD\_Q  
ClientSampled :  
PB114750BS

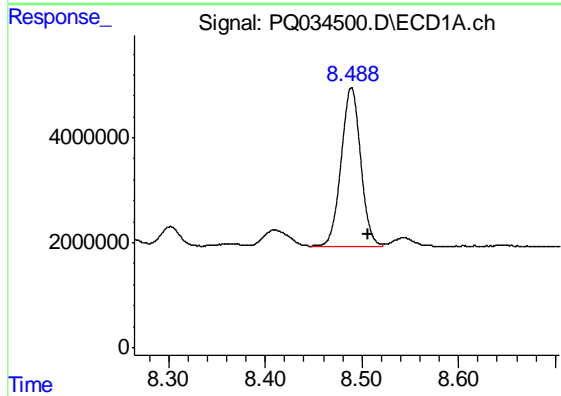
Manual Integrations  
APPROVED

Sohil  
11/13/2018 4:33:08 PM



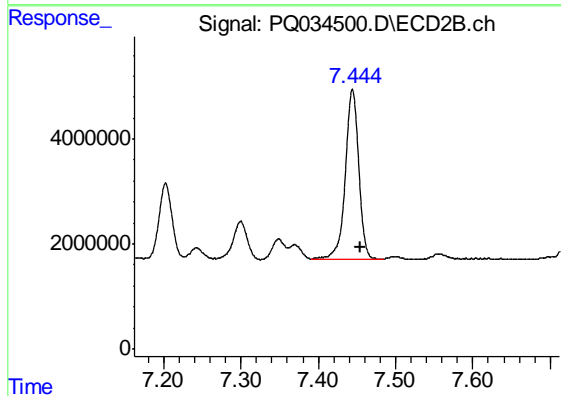
#34 AR-1260-4

R.T.: 7.203 min  
Delta R.T.: -0.011 min  
Response: 16773678  
Conc: 184.85 ng/ml



#35 AR-1260-5

R.T.: 8.489 min  
Delta R.T.: -0.017 min  
Response: 42854002  
Conc: 171.83 ng/ml



#35 AR-1260-5

R.T.: 7.444 min  
Delta R.T.: -0.010 min  
Response: 39476141  
Conc: 169.86 ng/ml