

Data Path : Z:\pestpcbsrv\HPCHEM1\ECD_Q\Data\PQ111320\
 Data File : PQ050924.D
 Signal(s) : Signal #1: ECD1A.ch Signal #2: ECD2B.ch
 Acq On : 13 Nov 2020 16:00
 Operator : DD\AJ
 Sample : L4710-03
 Misc :
 ALS Vial : 11 Sample Multiplier: 1

Instrument :
 ECD_Q
 ClientSampled :
 C0AW8

Integration File signal 1: autoint1.e
 Integration File signal 2: autoint2.e
 Quant Time: Nov 17 01:26:33 2020
 Quant Method : Z:\pestpcbsrv\HPCHEM1\ECD_Q\Method\PQ110320CLP.M
 Quant Title : GC EXTRACTABLES
 QLast Update : Wed Nov 04 08:52:38 2020
 Response via : Initial Calibration
 Integrator: ChemStation

Volume Inj. : 1 µl
 Signal #1 Phase : ZB MR1 Signal #2 Phase: ZB MR2
 Signal #1 Info : 30Mx0.32mmx 0.5µm Signal #2 Info : 30M x 0.32mm x 0.25µm

Compound	RT#1	RT#2	Resp#1	Resp#2	ng/ml	ng/ml

System Monitoring Compounds						
1) SA Tetrachlo...	5.238	4.259	421.8E6	103.2E6	24.007	22.932
2) SA Decachlor...	11.439	9.621	520.0E6	147.5E6	37.769	38.345
Target Compounds						
3) L1 AR-1016-1	6.584	5.520	216.7E6	4841366	395.823	30.815 #
4) L1 AR-1016-2	6.584	5.553	216.7E6	80012209	275.456	364.770 #
5) L1 AR-1016-3	6.662	5.731	57884348	12663851	125.411	116.817
6) L1 AR-1016-4	6.758	5.791	61275662	3510650	158.801	40.026 #
7) L1 AR-1016-5	7.085	6.030	45541146	3408577	126.471	29.471 #
8) L2 AR-1221-1	5.459	4.508	11077609	5420901	65.800	117.734 #
9) L2 AR-1221-2	5.594	4.616	84718723	5248338	707.021	168.646 #
10) L2 AR-1221-3	5.689	4.709	68527593	6042576	169.927	53.988 #
11) L3 AR-1232-1	5.689	4.709	68527593	6042576	217.746	67.967 #
12) L3 AR-1232-2	6.222	5.553	271.5E6	80012209	1750.840	893.538 #
13) L3 AR-1232-3	6.584	5.731	216.7E6	12663851	687.724	289.043 #
14) L3 AR-1232-4	6.758	5.849	61275662	19308120	393.197	519.256 #
15) L3 AR-1232-5	6.866	6.030	40900244	3408577	378.430	79.597 #
16) L4 AR-1242-1	6.584	5.520	216.7E6	4841366	454.672	36.414 #
17) L4 AR-1242-2	6.584	5.553	216.7E6	80012209	317.256	428.795 #
18) L4 AR-1242-3	6.662	5.731	57884348	12663851	141.685	135.558
19) L4 AR-1242-4	6.758	5.849	61275662	19308120	181.620	212.663
20) L4 AR-1242-5	7.516	6.403	500.2E6	208.2E6	1417.240	1717.579
21) L5 AR-1248-1	6.584	5.520	216.7E6	4841366	610.223	51.511 #
22) L5 AR-1248-2	6.866	5.791	40900244	3510650	83.446	27.118 #
23) L5 AR-1248-3	7.085	5.849	45541146	19308120	80.974	145.037 #
24) L5 AR-1248-4	7.491	6.030	184.6E6	3408577	283.151	20.882 #
25) L5 AR-1248-5	7.567	6.446	111.6E6	36068456	177.785	218.724
26) L6 AR-1254-1	7.491	6.403	184.6E6	208.2E6	273.613	759.182 #
27) L6 AR-1254-2	7.718	6.553	538.2E6	23842410	520.046	101.294 #
28) L6 AR-1254-3	8.101	6.979	298.1E6	14275554	265.782	35.931 #
29) L6 AR-1254-4	8.367	7.231	126.0E6	9809501	156.820	40.089 #
30) L6 AR-1254-5	8.808	7.645	24553760	27646213	28.334	81.027 #
31) L7 AR-1260-1	8.260	7.115	102.1E6	11952159	162.189	57.706 #
32) L7 AR-1260-2	8.518	7.273f	1140.7E6	31827155	1487.052	123.651 #
33) L7 AR-1260-3	8.884	7.469	8339548	16359499	13.925	68.952 #
34) L7 AR-1260-4	9.113	7.956	444.7E6	31056789	623.223	153.500 #
35) L7 AR-1260-5	9.471	8.197	801.0E6	8956031	528.117	17.662 #
36) L8 AR-1262-1	8.884	7.645	8339548	27646213	8.460	153.732 #
37) L8 AR-1262-2	9.471	8.197	801.0E6	8956031	417.021	13.436 #
38) L8 AR-1262-3	9.750f	8.486	2460.9E6	5492110	2993.050	22.489 #
39) L8 AR-1262-4	0.000	8.551	0	8435718	N.D.	17.685 #
40) L8 AR-1262-5	10.624	9.052	10599421	1399298	15.497	6.617 #
41) L9 AR-1268-1	9.750f	8.486	2460.9E6	5492110	1025.765	6.866 #
42) L9 AR-1268-2	0.000	8.551	0	8435718	N.D.	11.468 #

Data Path : Z:\pestpcbsrv\HPCHEM1\ECD_Q\Data\PQ111320\
 Data File : PQ050924.D
 Signal(s) : Signal #1: ECD1A.ch Signal #2: ECD2B.ch
 Acq On : 13 Nov 2020 16:00
 Operator : DD\AJ
 Sample : L4710-03
 Misc :
 ALS Vial : 11 Sample Multiplier: 1

Instrument :
 ECD_Q
 ClientSampleId :
 C0AW8

Integration File signal 1: autoint1.e
 Integration File signal 2: autoint2.e
 Quant Time: Nov 17 01:26:33 2020
 Quant Method : Z:\pestpcbsrv\HPCHEM1\ECD_Q\Method\PQ110320CLP.M
 Quant Title : GC EXTRACTABLES
 QLast Update : Wed Nov 04 08:52:38 2020
 Response via : Initial Calibration
 Integrator: ChemStation

Volume Inj. : 1 µl
 Signal #1 Phase : ZB MR1 Signal #2 Phase: ZB MR2
 Signal #1 Info : 30Mx0.32mmx 0.5µm Signal #2 Info : 30M x 0.32mm x 0.25µm

	Compound	RT#1	RT#2	Resp#1	Resp#2	ng/ml	ng/ml
43)	L9 AR-1268-3	0.000	8.765	0	9767066	N.D.	15.939 #
44)	L9 AR-1268-4	10.624	9.052	10599421	1399298	13.222	5.607 #
45)	L9 AR-1268-5	11.072	9.354	26409416	8317823	4.020	4.131

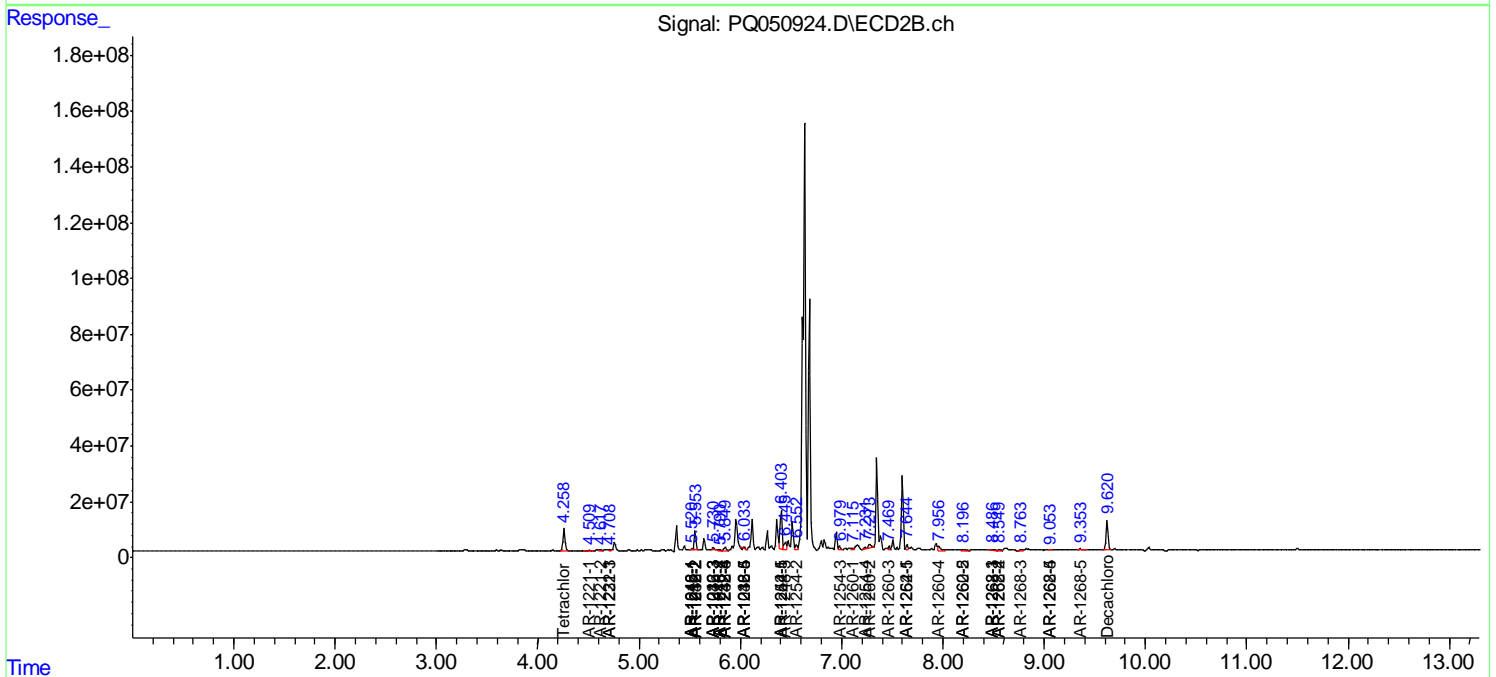
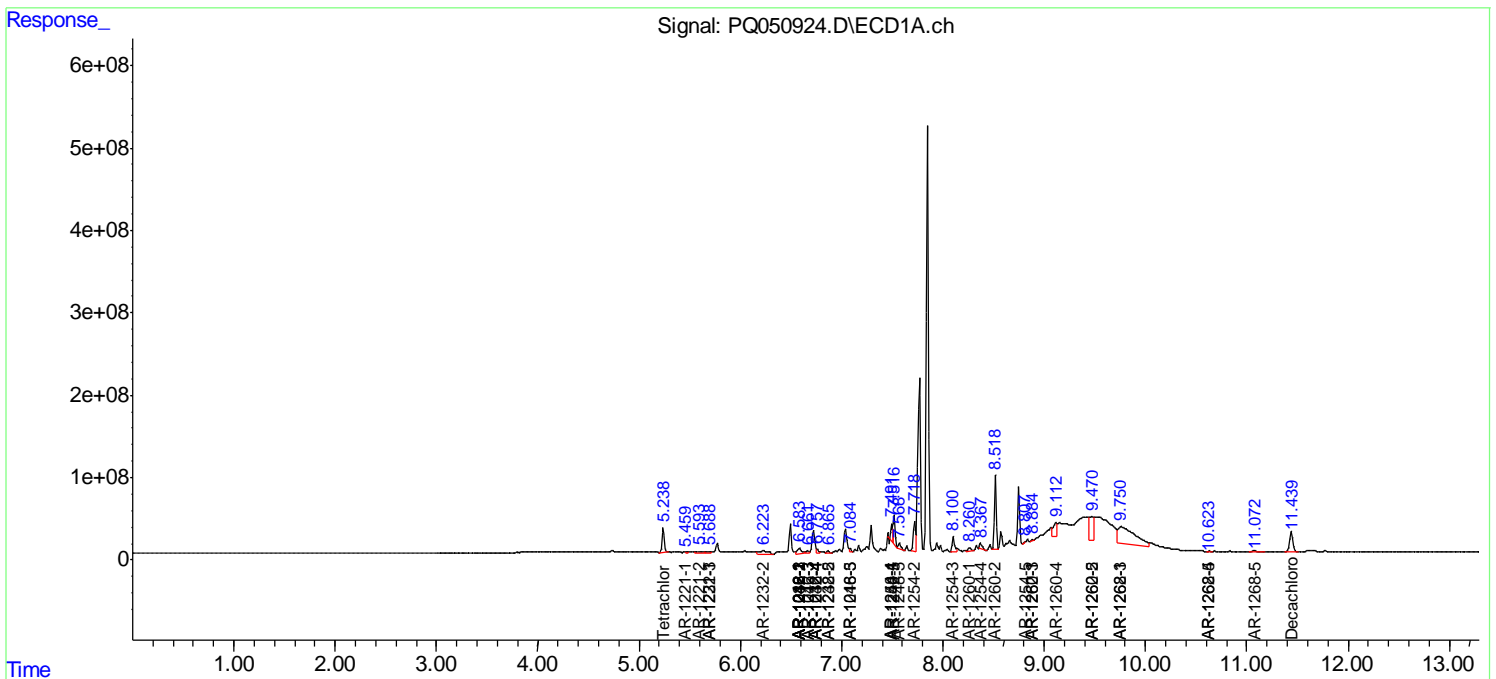
(f)=RT Delta > 1/2 Window (#)=Amounts differ by > 25% (m)=manual int.

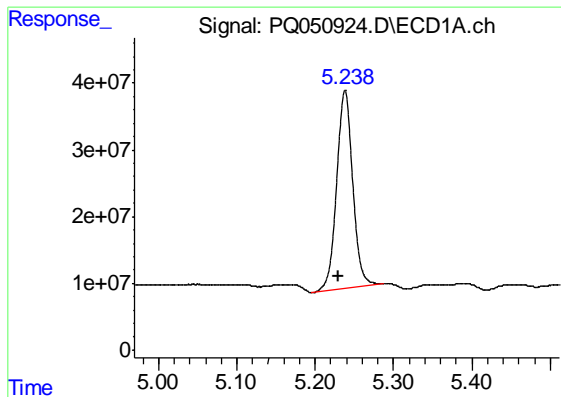
Data Path : Z:\pestpcbsrv\HPCHEM1\ECD_Q\Data\PQ111320\
 Data File : PQ050924.D
 Signal(s) : Signal #1: ECD1A.ch Signal #2: ECD2B.ch
 Acq On : 13 Nov 2020 16:00
 Operator : DD\AJ
 Sample : L4710-03
 Misc :
 ALS Vial : 11 Sample Multiplier: 1

Instrument :
 ECD_Q
 Client Sampled :
 C0AW8

Integration File signal 1: autoint1.e
 Integration File signal 2: autoint2.e
 Quant Time: Nov 17 01:26:33 2020
 Quant Method : Z:\pestpcbsrv\HPCHEM1\ECD_Q\Method\PQ110320CLP.M
 Quant Title : GC EXTRACTABLES
 QLast Update : Wed Nov 04 08:52:38 2020
 Response via : Initial Calibration
 Integrator: ChemStation

Volume Inj. : 1 µl
 Signal #1 Phase : ZB MR1 Signal #2 Phase: ZB MR2
 Signal #1 Info : 30Mx0.32mmx 0.5µm Signal #2 Info : 30M x 0.32mm x 0.25µm

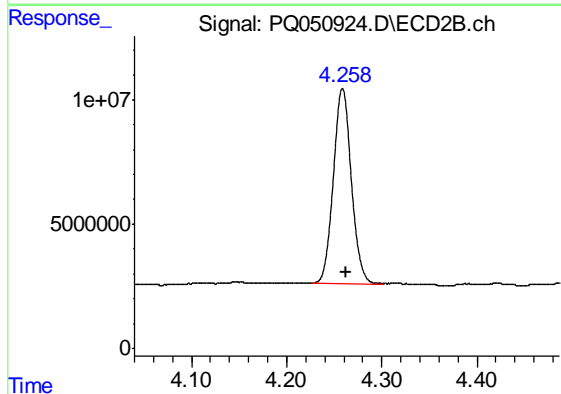




#1 Tetrachloro-m-xylene

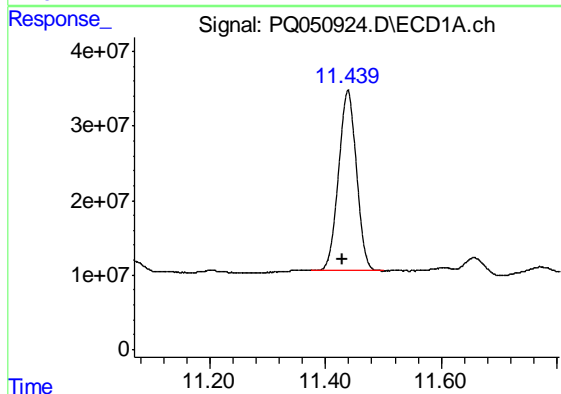
R.T.: 5.238 min
Delta R.T.: 0.008 min
Response: 421781246
Conc: 24.01 ng/ml

Instrument :
ECD_Q
ClientSampleId :
C0AW8



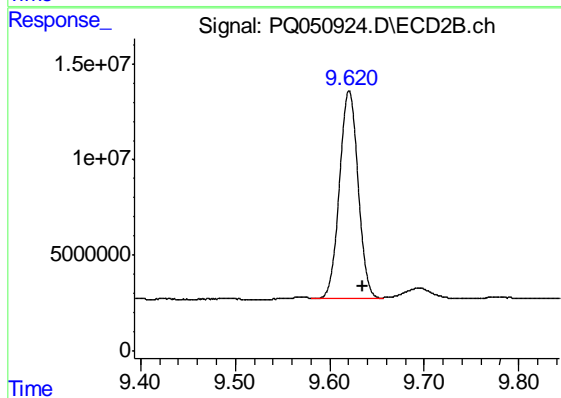
#1 Tetrachloro-m-xylene

R.T.: 4.259 min
Delta R.T.: -0.003 min
Response: 103164015
Conc: 22.93 ng/ml



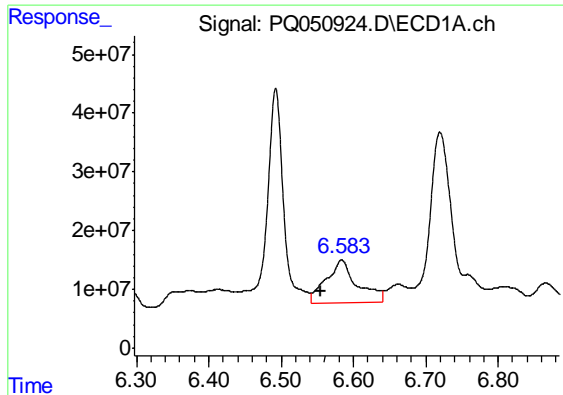
#2 Decachlorobiphenyl

R.T.: 11.439 min
Delta R.T.: 0.009 min
Response: 519976330
Conc: 37.77 ng/ml



#2 Decachlorobiphenyl

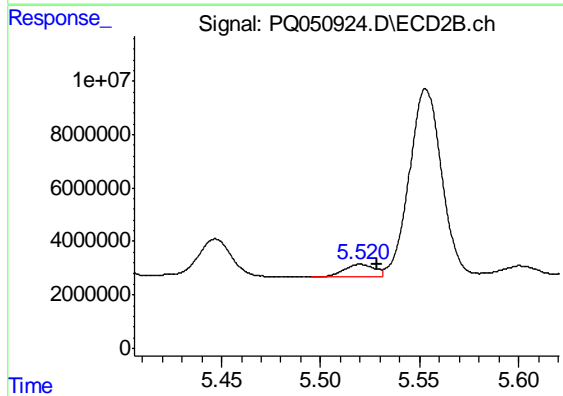
R.T.: 9.621 min
Delta R.T.: -0.014 min
Response: 147466754
Conc: 38.35 ng/ml



#3 AR-1016-1

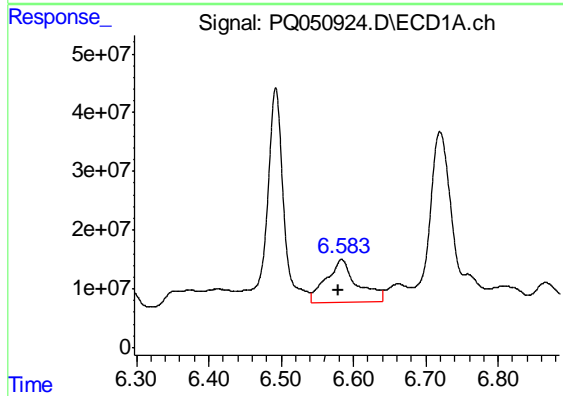
R.T.: 6.584 min
 Delta R.T.: 0.029 min
 Response: 216726566
 Conc: 395.82 ng/ml

Instrument :
 ECD_Q
 ClientSampleId :
 C0AW8



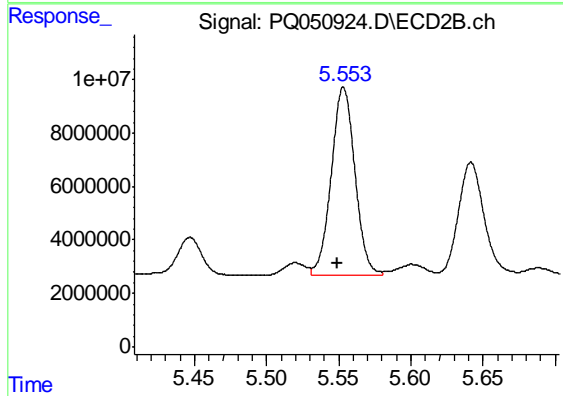
#3 AR-1016-1

R.T.: 5.520 min
 Delta R.T.: -0.008 min
 Response: 4841366
 Conc: 30.82 ng/ml



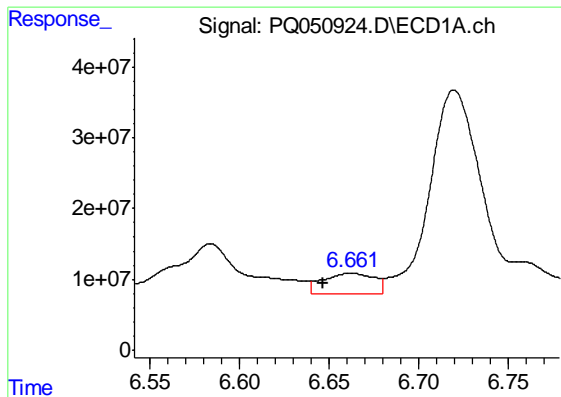
#4 AR-1016-2

R.T.: 6.584 min
 Delta R.T.: 0.004 min
 Response: 216726566
 Conc: 275.46 ng/ml



#4 AR-1016-2

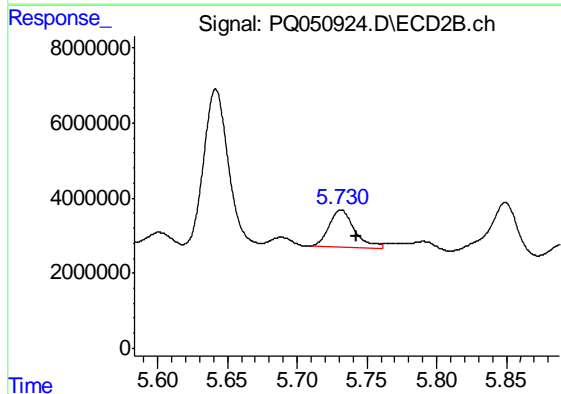
R.T.: 5.553 min
 Delta R.T.: 0.004 min
 Response: 80012209
 Conc: 364.77 ng/ml



#5 AR-1016-3

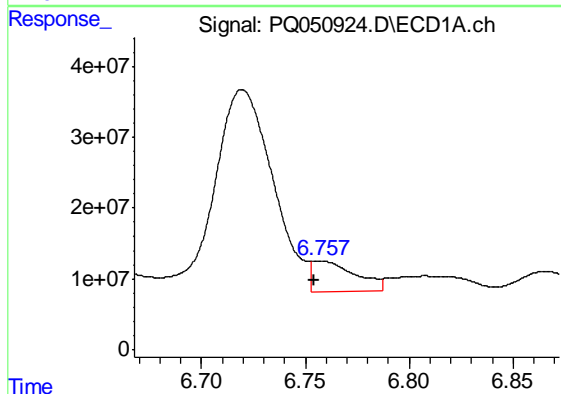
R.T.: 6.662 min
 Delta R.T.: 0.015 min
 Response: 57884348
 Conc: 125.41 ng/ml

Instrument :
 ECD_Q
 ClientSampled :
 C0AW8



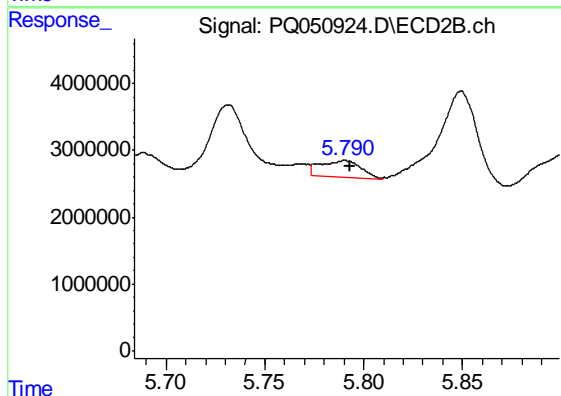
#5 AR-1016-3

R.T.: 5.731 min
 Delta R.T.: -0.012 min
 Response: 12663851
 Conc: 116.82 ng/ml



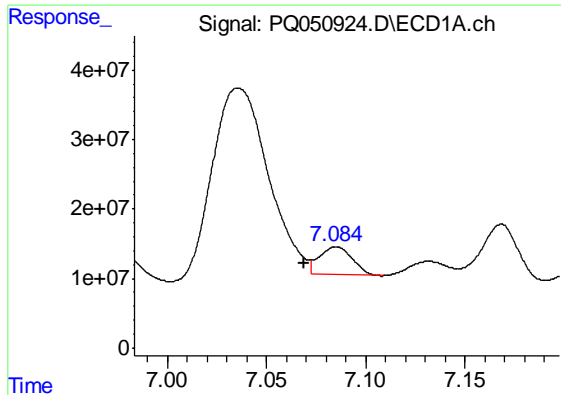
#6 AR-1016-4

R.T.: 6.758 min
 Delta R.T.: 0.004 min
 Response: 61275662
 Conc: 158.80 ng/ml



#6 AR-1016-4

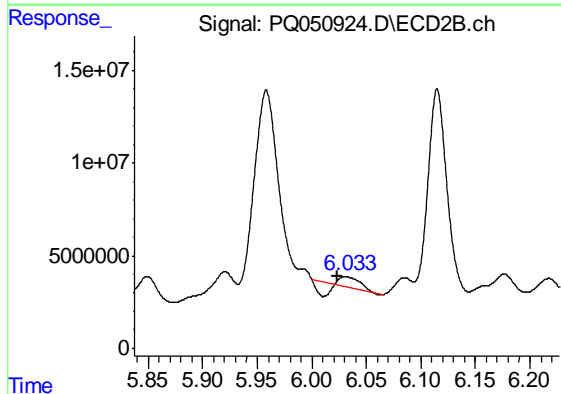
R.T.: 5.791 min
 Delta R.T.: -0.002 min
 Response: 3510650
 Conc: 40.03 ng/ml



#7 AR-1016-5

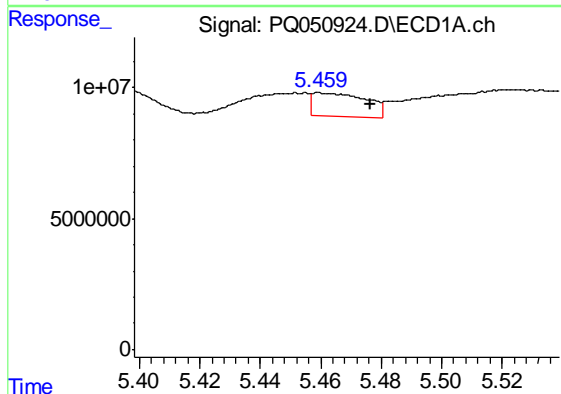
R.T.: 7.085 min
 Delta R.T.: 0.016 min
 Response: 45541146
 Conc: 126.47 ng/ml

Instrument :
 ECD_Q
 ClientSampleId :
 C0AW8



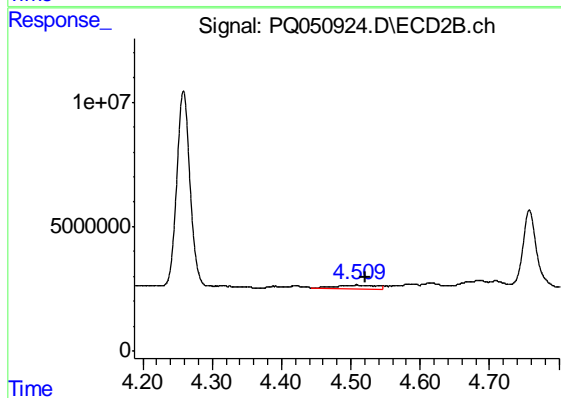
#7 AR-1016-5

R.T.: 6.030 min
 Delta R.T.: 0.006 min
 Response: 3408577
 Conc: 29.47 ng/ml



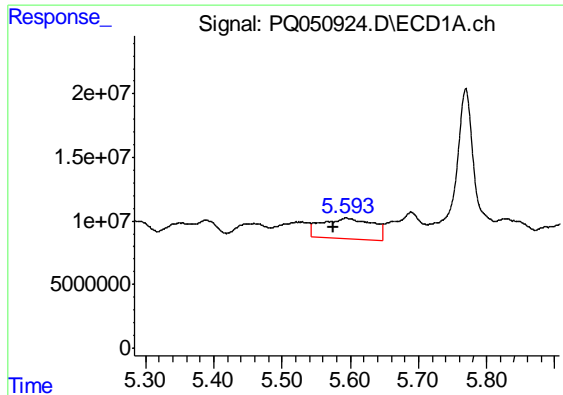
#8 AR-1221-1

R.T.: 5.459 min
 Delta R.T.: -0.017 min
 Response: 11077609
 Conc: 65.80 ng/ml



#8 AR-1221-1

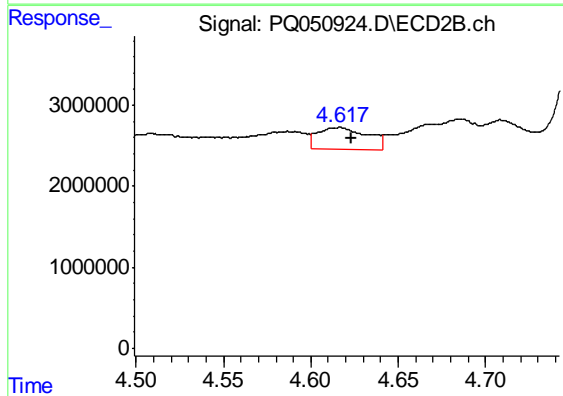
R.T.: 4.508 min
 Delta R.T.: -0.013 min
 Response: 5420901
 Conc: 117.73 ng/ml



#9 AR-1221-2

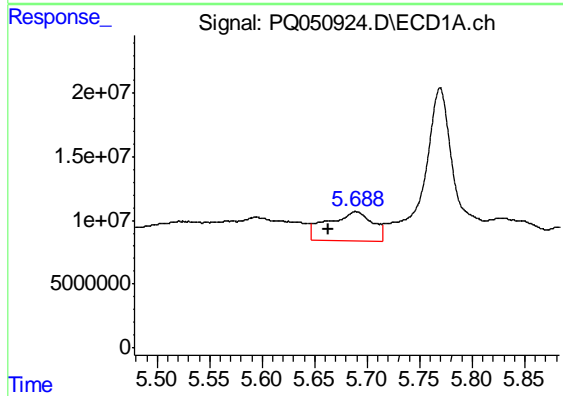
R.T.: 5.594 min
 Delta R.T.: 0.019 min
 Response: 84718723
 Conc: 707.02 ng/ml

Instrument :
 ECD_Q
 ClientSampled :
 C0AW8



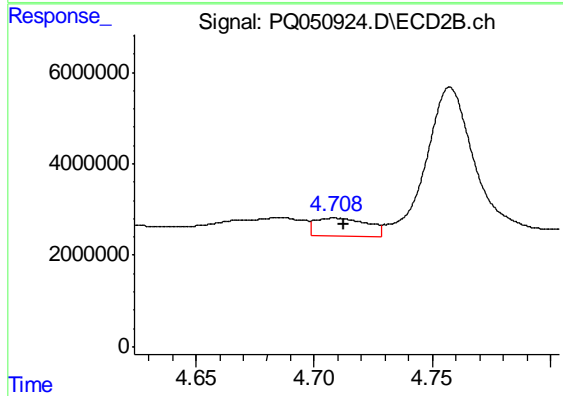
#9 AR-1221-2

R.T.: 4.616 min
 Delta R.T.: -0.007 min
 Response: 5248338
 Conc: 168.65 ng/ml



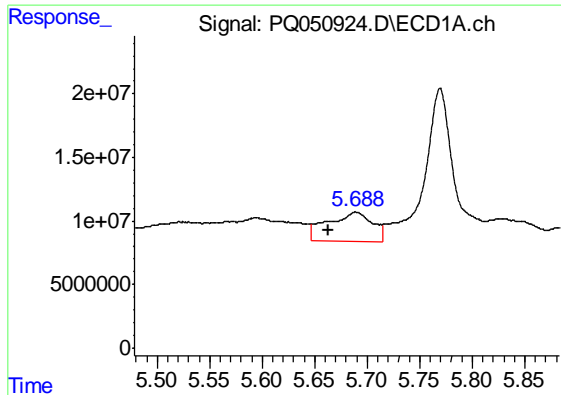
#10 AR-1221-3

R.T.: 5.689 min
 Delta R.T.: 0.026 min
 Response: 68527593
 Conc: 169.93 ng/ml



#10 AR-1221-3

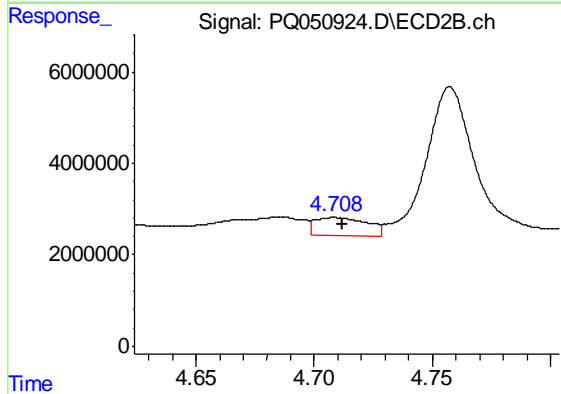
R.T.: 4.709 min
 Delta R.T.: -0.004 min
 Response: 6042576
 Conc: 53.99 ng/ml



#11 AR-1232-1

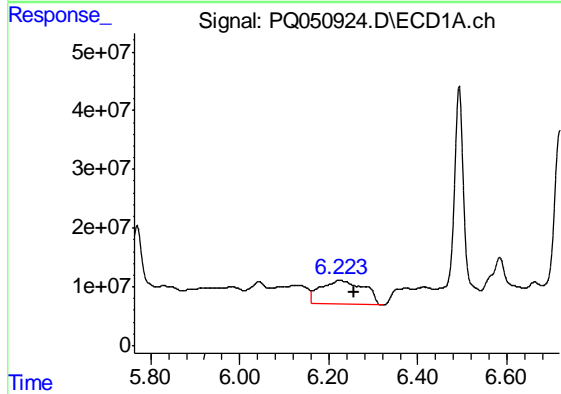
R.T.: 5.689 min
 Delta R.T.: 0.026 min
 Response: 68527593
 Conc: 217.75 ng/ml

Instrument :
 ECD_Q
 ClientSampleId :
 C0AW8



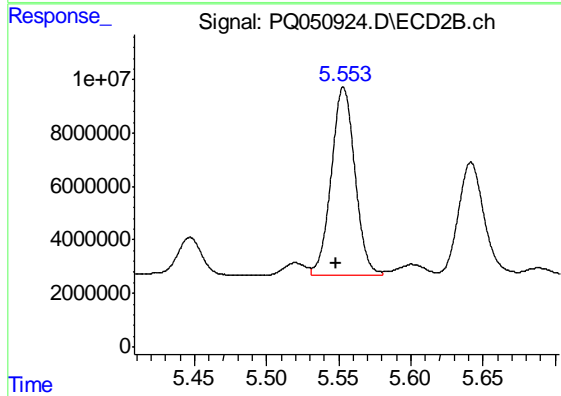
#11 AR-1232-1

R.T.: 4.709 min
 Delta R.T.: -0.003 min
 Response: 6042576
 Conc: 67.97 ng/ml



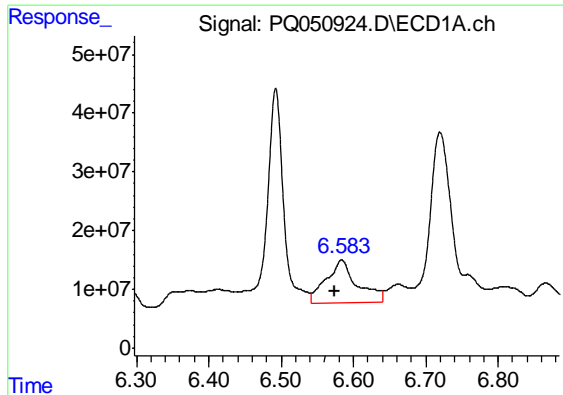
#12 AR-1232-2

R.T.: 6.222 min
 Delta R.T.: -0.034 min
 Response: 271474371
 Conc: 1750.84 ng/ml



#12 AR-1232-2

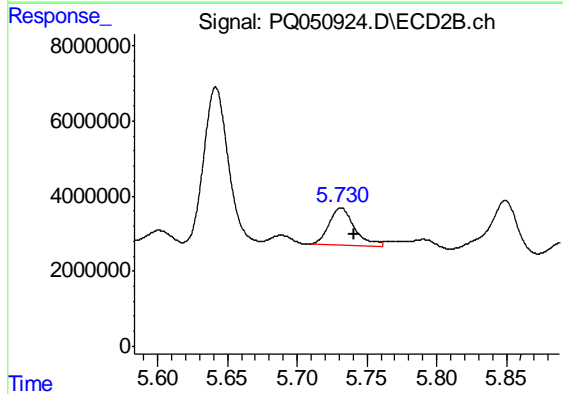
R.T.: 5.553 min
 Delta R.T.: 0.005 min
 Response: 80012209
 Conc: 893.54 ng/ml



#13 AR-1232-3

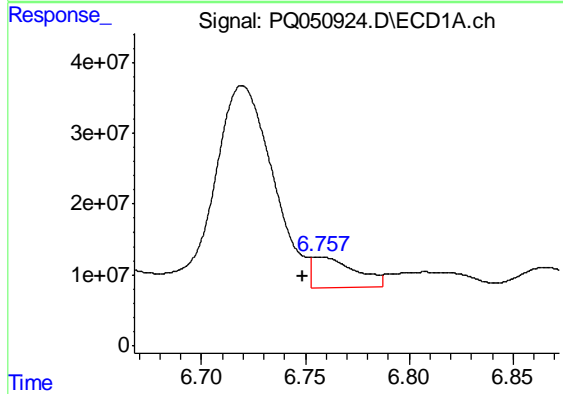
R.T.: 6.584 min
 Delta R.T.: 0.009 min
 Response: 216726566
 Conc: 687.72 ng/ml

Instrument :
 ECD_Q
 ClientSampleId :
 C0AW8



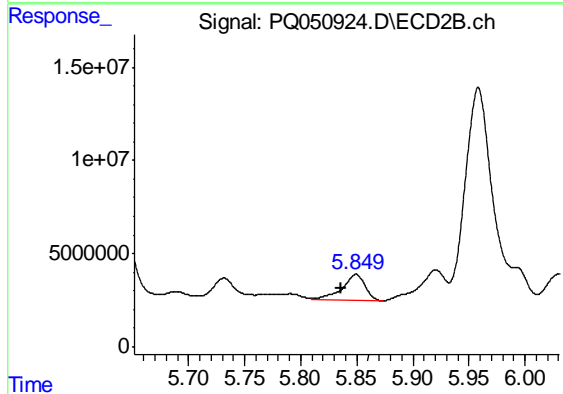
#13 AR-1232-3

R.T.: 5.731 min
 Delta R.T.: -0.009 min
 Response: 12663851
 Conc: 289.04 ng/ml



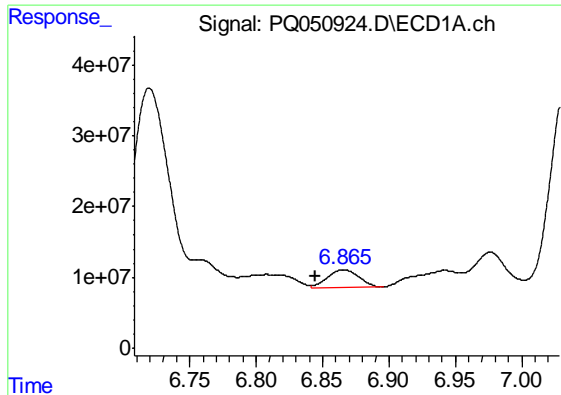
#14 AR-1232-4

R.T.: 6.758 min
 Delta R.T.: 0.009 min
 Response: 61275662
 Conc: 393.20 ng/ml



#14 AR-1232-4

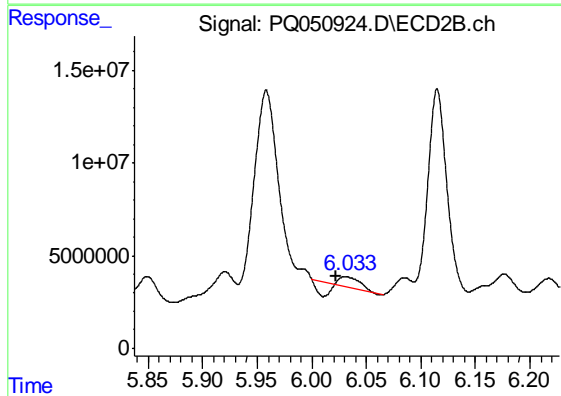
R.T.: 5.849 min
 Delta R.T.: 0.013 min
 Response: 19308120
 Conc: 519.26 ng/ml



#15 AR-1232-5

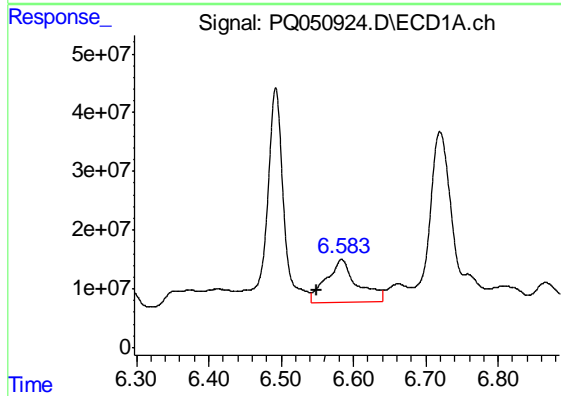
R.T.: 6.866 min
 Delta R.T.: 0.021 min
 Response: 40900244
 Conc: 378.43 ng/ml

Instrument :
 ECD_Q
 ClientSampleId :
 C0AW8



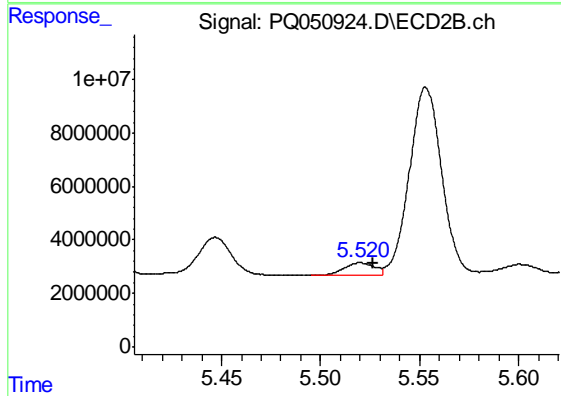
#15 AR-1232-5

R.T.: 6.030 min
 Delta R.T.: 0.008 min
 Response: 3408577
 Conc: 79.60 ng/ml



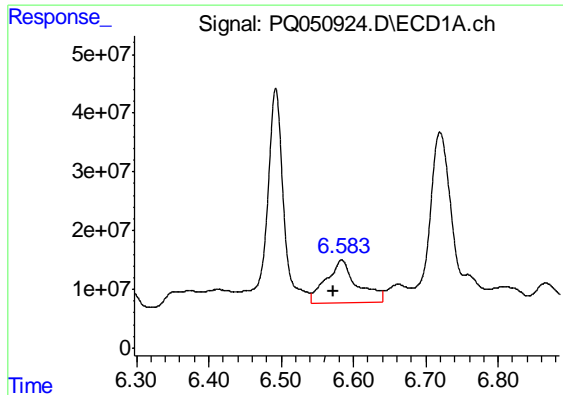
#16 AR-1242-1

R.T.: 6.584 min
 Delta R.T.: 0.035 min
 Response: 216726566
 Conc: 454.67 ng/ml



#16 AR-1242-1

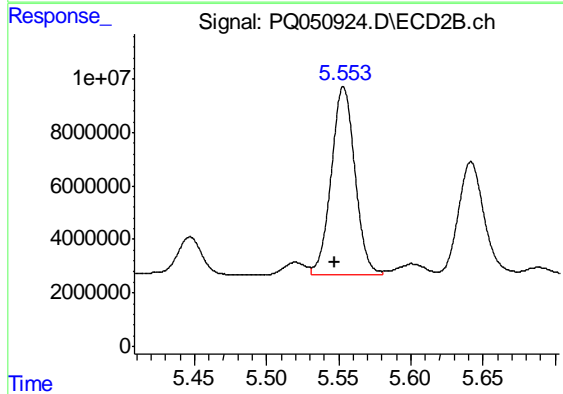
R.T.: 5.520 min
 Delta R.T.: -0.006 min
 Response: 4841366
 Conc: 36.41 ng/ml



#17 AR-1242-2

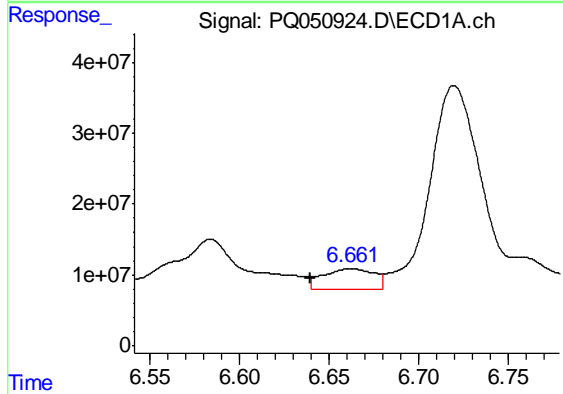
R.T.: 6.584 min
 Delta R.T.: 0.012 min
 Response: 216726566
 Conc: 317.26 ng/ml

Instrument :
 ECD_Q
 ClientSampled :
 C0AW8



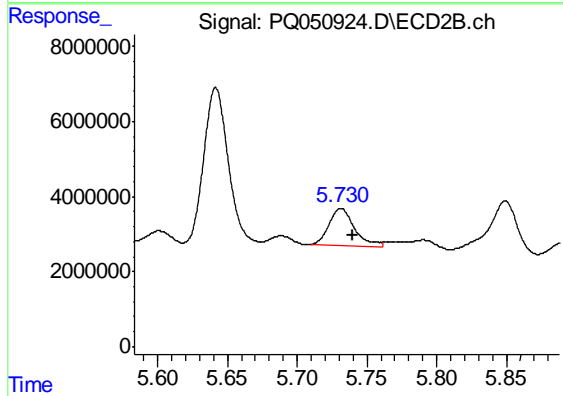
#17 AR-1242-2

R.T.: 5.553 min
 Delta R.T.: 0.006 min
 Response: 80012209
 Conc: 428.80 ng/ml



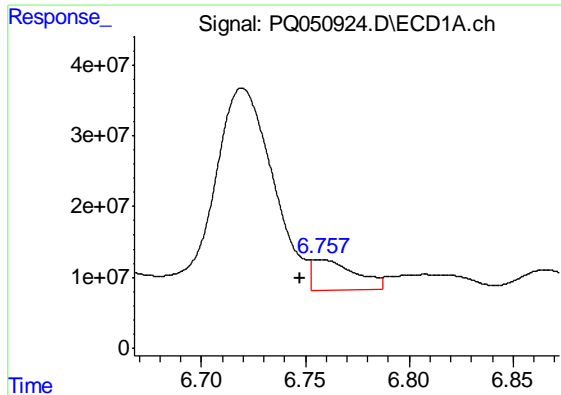
#18 AR-1242-3

R.T.: 6.662 min
 Delta R.T.: 0.022 min
 Response: 57884348
 Conc: 141.69 ng/ml



#18 AR-1242-3

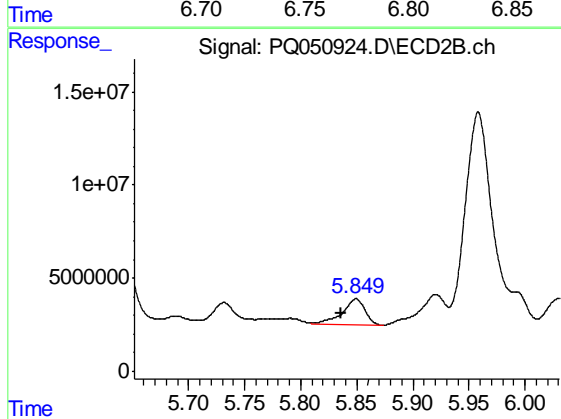
R.T.: 5.731 min
 Delta R.T.: -0.009 min
 Response: 12663851
 Conc: 135.56 ng/ml



#19 AR-1242-4

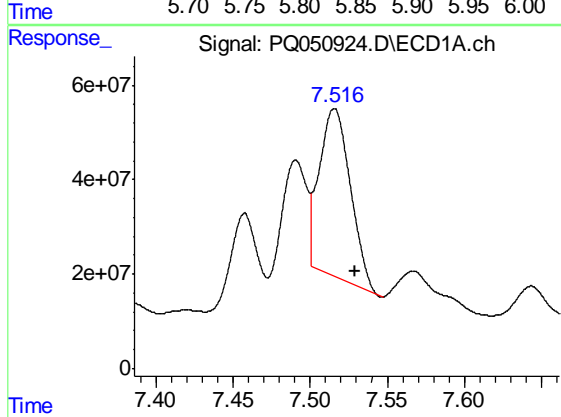
R.T.: 6.758 min
 Delta R.T.: 0.010 min
 Response: 61275662
 Conc: 181.62 ng/ml

Instrument :
 ECD_Q
 ClientSampled :
 C0AW8



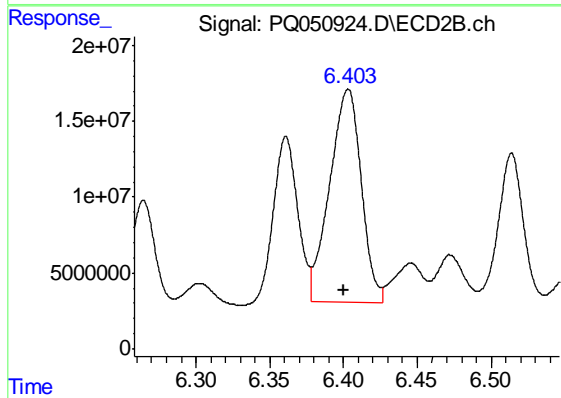
#19 AR-1242-4

R.T.: 5.849 min
 Delta R.T.: 0.013 min
 Response: 19308120
 Conc: 212.66 ng/ml



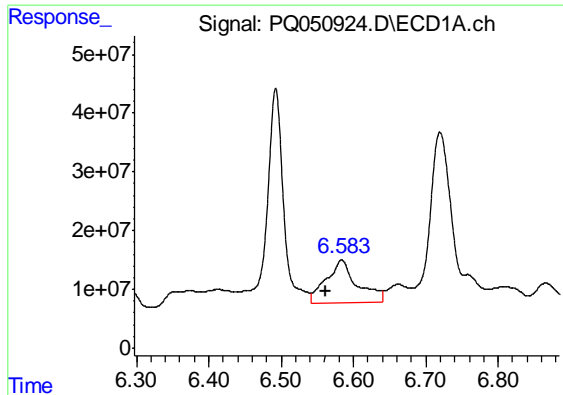
#20 AR-1242-5

R.T.: 7.516 min
 Delta R.T.: -0.013 min
 Response: 500244655
 Conc: 1417.24 ng/ml



#20 AR-1242-5

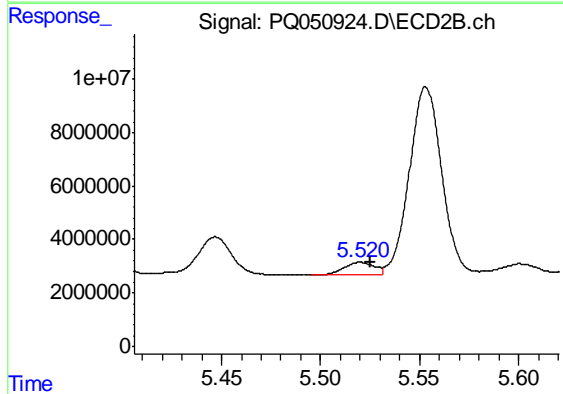
R.T.: 6.403 min
 Delta R.T.: 0.003 min
 Response: 208226847
 Conc: 1717.58 ng/ml



#21 AR-1248-1

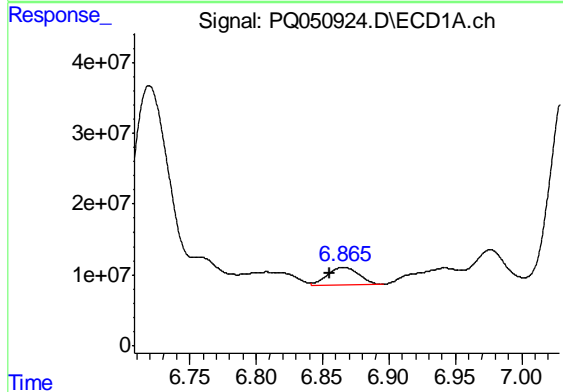
R.T.: 6.584 min
 Delta R.T.: 0.022 min
 Response: 216726566
 Conc: 610.22 ng/ml

Instrument :
 ECD_Q
 ClientSampleId :
 C0AW8



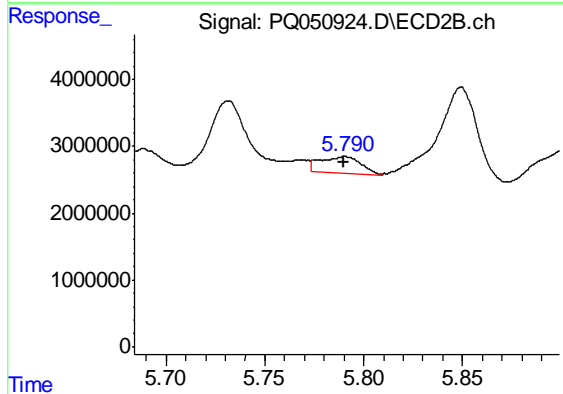
#21 AR-1248-1

R.T.: 5.520 min
 Delta R.T.: -0.005 min
 Response: 4841366
 Conc: 51.51 ng/ml



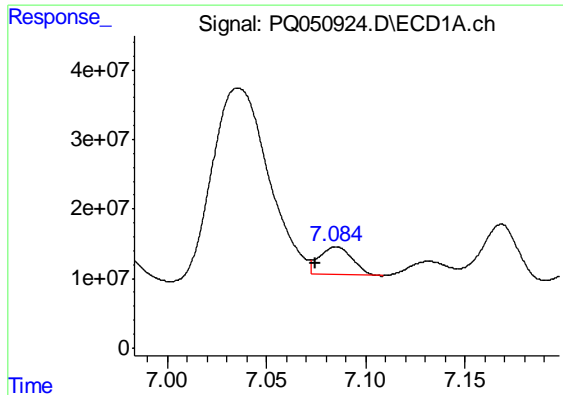
#22 AR-1248-2

R.T.: 6.866 min
 Delta R.T.: 0.010 min
 Response: 40900244
 Conc: 83.45 ng/ml



#22 AR-1248-2

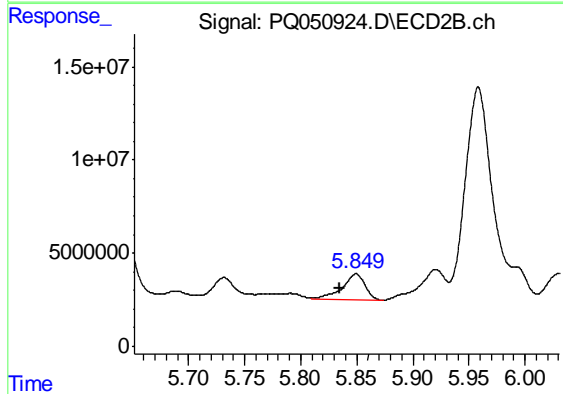
R.T.: 5.791 min
 Delta R.T.: 0.000 min
 Response: 3510650
 Conc: 27.12 ng/ml



#23 AR-1248-3

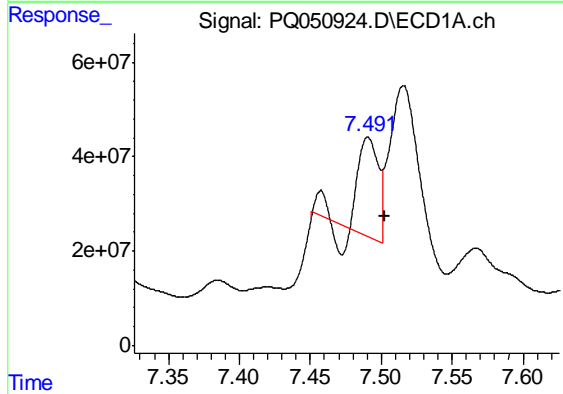
R.T.: 7.085 min
 Delta R.T.: 0.010 min
 Response: 45541146
 Conc: 80.97 ng/ml

Instrument :
 ECD_Q
 ClientSampleId :
 C0AW8



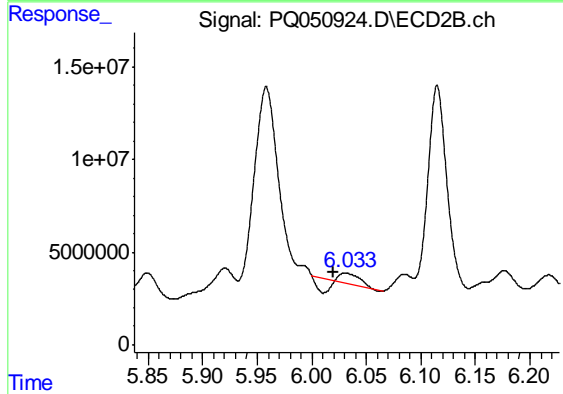
#23 AR-1248-3

R.T.: 5.849 min
 Delta R.T.: 0.014 min
 Response: 19308120
 Conc: 145.04 ng/ml



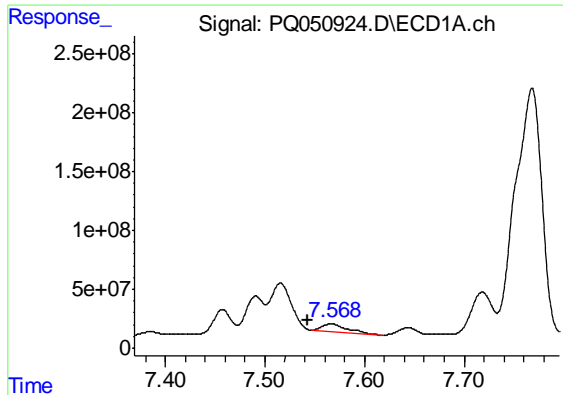
#24 AR-1248-4

R.T.: 7.491 min
 Delta R.T.: -0.012 min
 Response: 184607965
 Conc: 283.15 ng/ml



#24 AR-1248-4

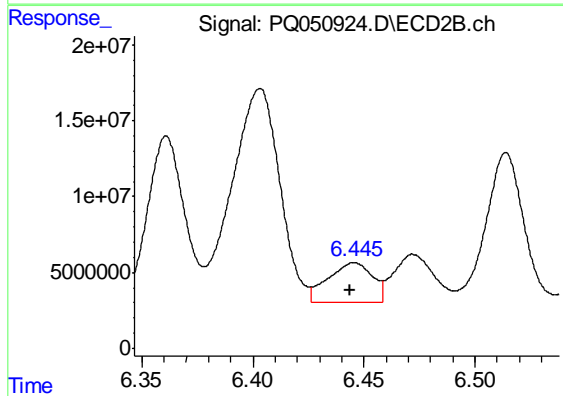
R.T.: 6.030 min
 Delta R.T.: 0.010 min
 Response: 3408577
 Conc: 20.88 ng/ml



#25 AR-1248-5

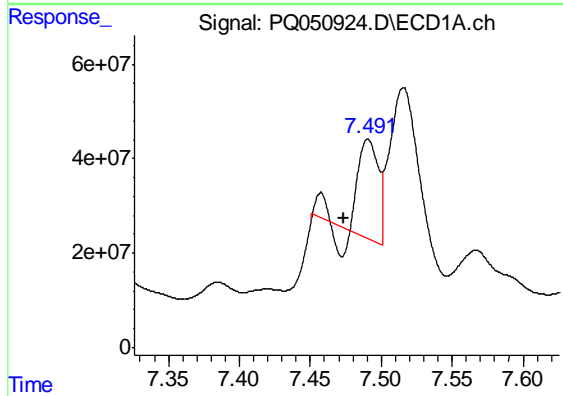
R.T.: 7.567 min
 Delta R.T.: 0.024 min
 Response: 111571322
 Conc: 177.79 ng/ml

Instrument :
 ECD_Q
 ClientSampleId :
 C0AW8



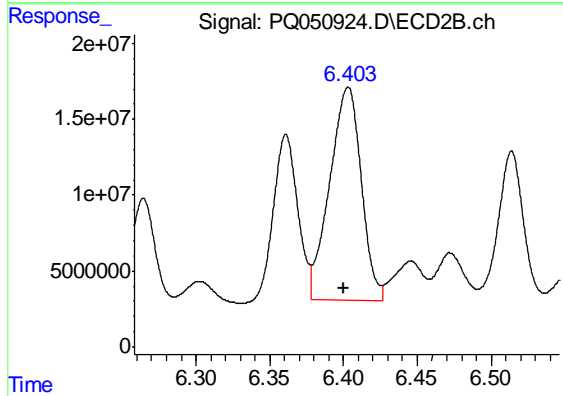
#25 AR-1248-5

R.T.: 6.446 min
 Delta R.T.: 0.002 min
 Response: 36068456
 Conc: 218.72 ng/ml



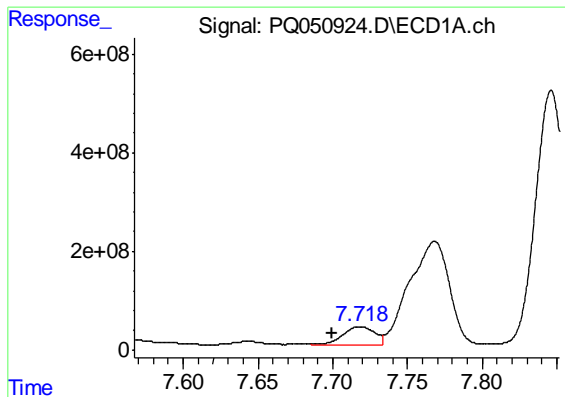
#26 AR-1254-1

R.T.: 7.491 min
 Delta R.T.: 0.018 min
 Response: 184607965
 Conc: 273.61 ng/ml



#26 AR-1254-1

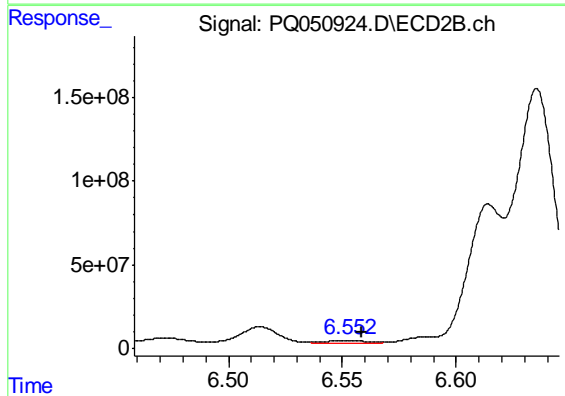
R.T.: 6.403 min
 Delta R.T.: 0.003 min
 Response: 208226847
 Conc: 759.18 ng/ml



#27 AR-1254-2

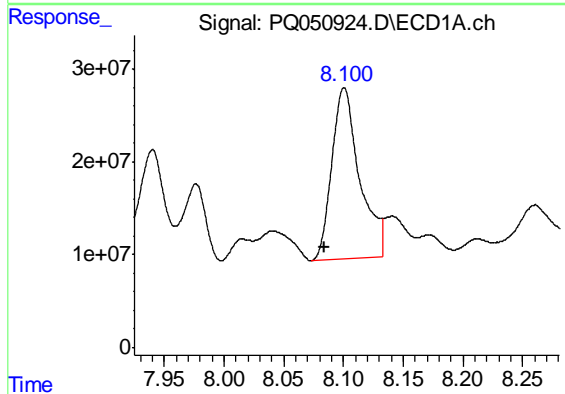
R.T.: 7.718 min
 Delta R.T.: 0.019 min
 Response: 538182639
 Conc: 520.05 ng/ml

Instrument :
 ECD_Q
 ClientSampled :
 C0AW8



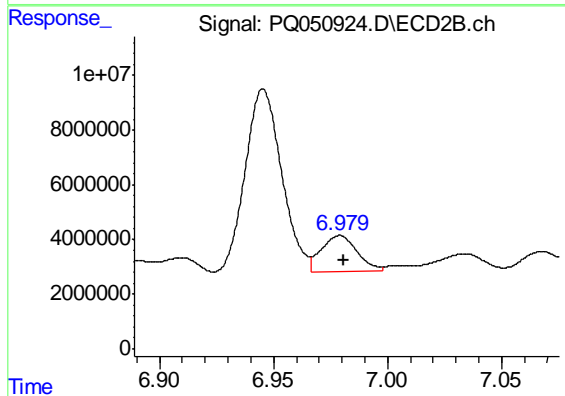
#27 AR-1254-2

R.T.: 6.553 min
 Delta R.T.: -0.006 min
 Response: 23842410
 Conc: 101.29 ng/ml



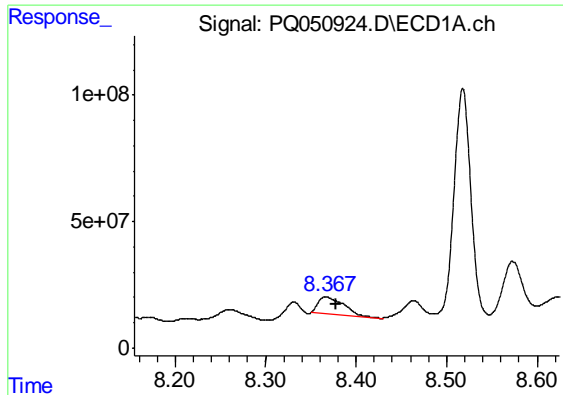
#28 AR-1254-3

R.T.: 8.101 min
 Delta R.T.: 0.017 min
 Response: 298080038
 Conc: 265.78 ng/ml



#28 AR-1254-3

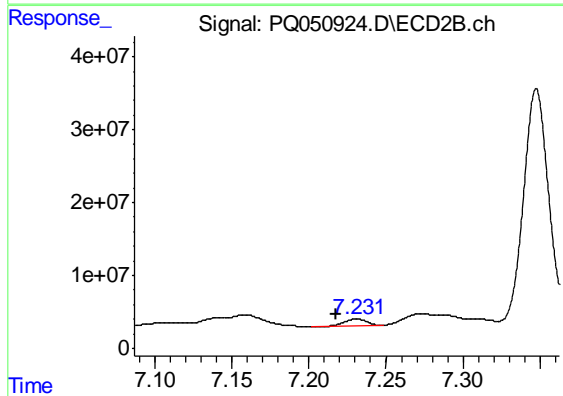
R.T.: 6.979 min
 Delta R.T.: -0.002 min
 Response: 14275554
 Conc: 35.93 ng/ml



#29 AR-1254-4

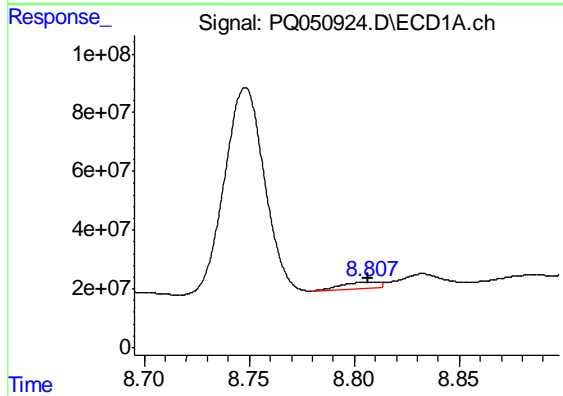
R.T.: 8.367 min
 Delta R.T.: -0.011 min
 Response: 126009405
 Conc: 156.82 ng/ml

Instrument :
 ECD_Q
 ClientSampled :
 C0AW8



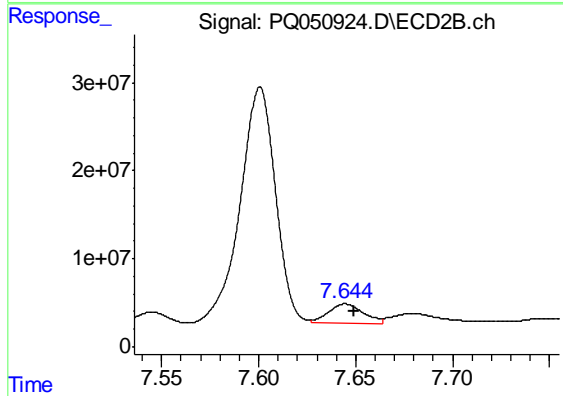
#29 AR-1254-4

R.T.: 7.231 min
 Delta R.T.: 0.013 min
 Response: 9809501
 Conc: 40.09 ng/ml



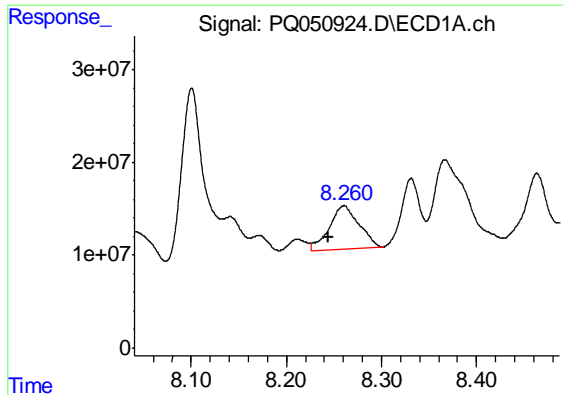
#30 AR-1254-5

R.T.: 8.808 min
 Delta R.T.: 0.001 min
 Response: 24553760
 Conc: 28.33 ng/ml



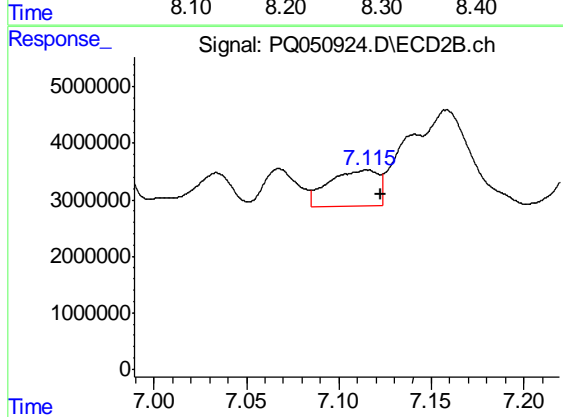
#30 AR-1254-5

R.T.: 7.645 min
 Delta R.T.: -0.005 min
 Response: 27646213
 Conc: 81.03 ng/ml

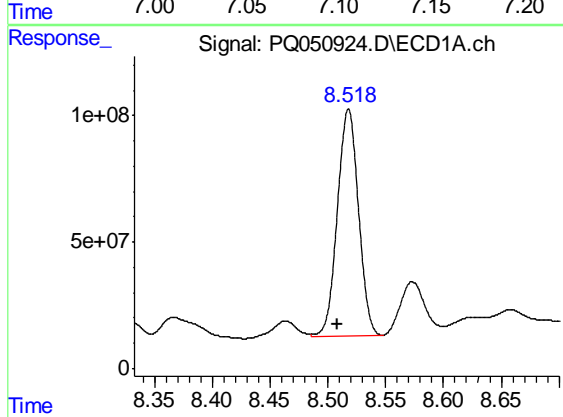


#31 AR-1260-1
 R.T.: 8.260 min
 Delta R.T.: 0.015 min
 Response: 102078262
 Conc: 162.19 ng/ml

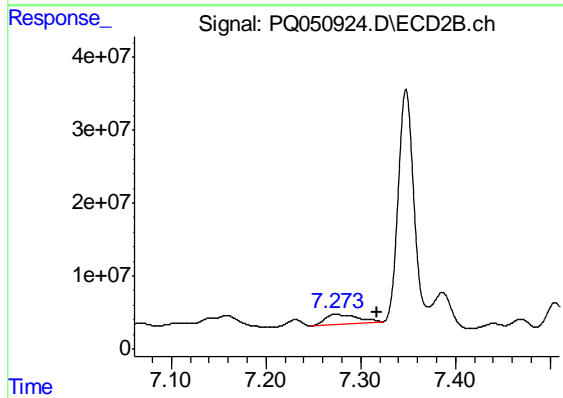
Instrument :
 ECD_Q
 ClientSampleId :
 C0AW8



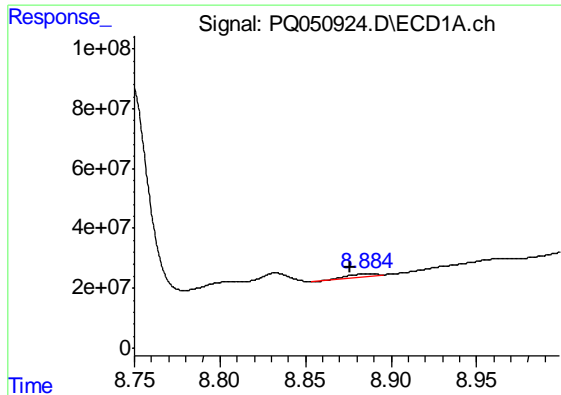
#31 AR-1260-1
 R.T.: 7.115 min
 Delta R.T.: -0.007 min
 Response: 11952159
 Conc: 57.71 ng/ml



#32 AR-1260-2
 R.T.: 8.518 min
 Delta R.T.: 0.009 min
 Response: 1140655533
 Conc: 1487.05 ng/ml



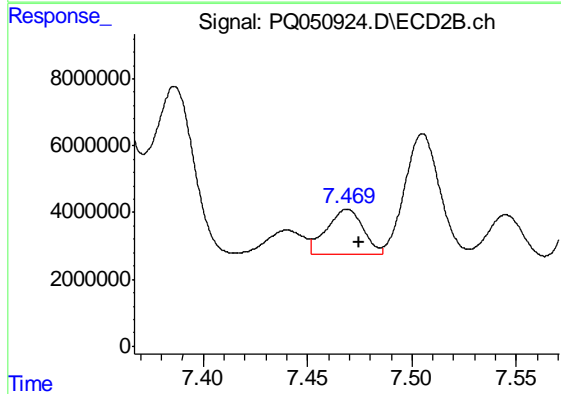
#32 AR-1260-2
 R.T.: 7.273 min
 Delta R.T.: -0.045 min
 Response: 31827155
 Conc: 123.65 ng/ml



#33 AR-1260-3

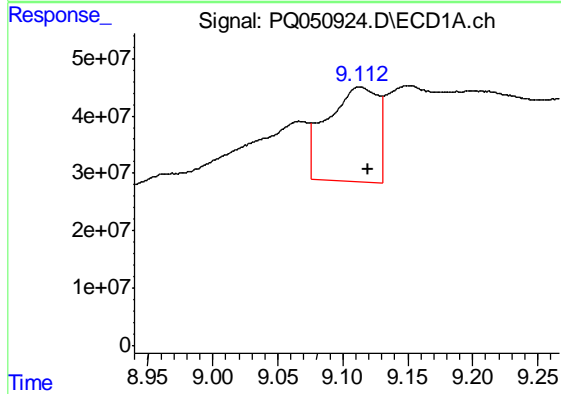
R.T.: 8.884 min
 Delta R.T.: 0.008 min
 Response: 8339548
 Conc: 13.92 ng/ml

Instrument :
 ECD_Q
 ClientSampleId :
 C0AW8



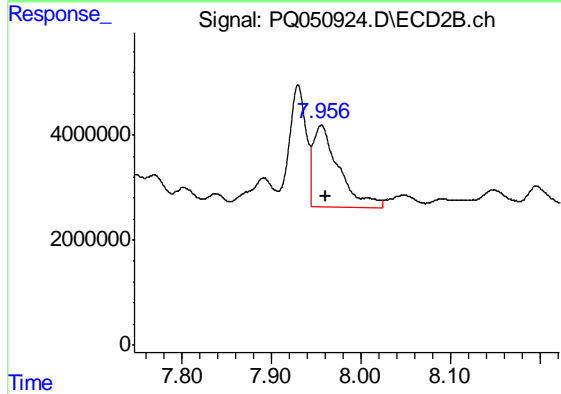
#33 AR-1260-3

R.T.: 7.469 min
 Delta R.T.: -0.006 min
 Response: 16359499
 Conc: 68.95 ng/ml



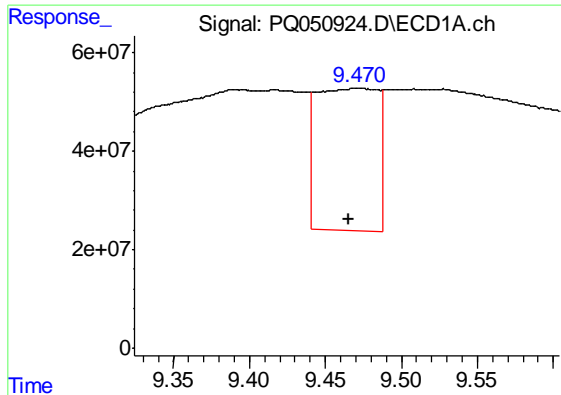
#34 AR-1260-4

R.T.: 9.113 min
 Delta R.T.: -0.007 min
 Response: 444714015
 Conc: 623.22 ng/ml



#34 AR-1260-4

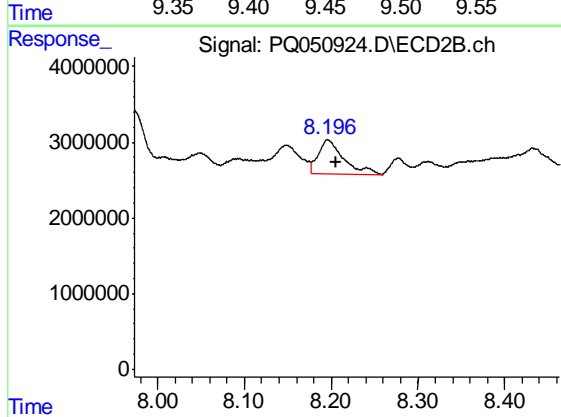
R.T.: 7.956 min
 Delta R.T.: -0.005 min
 Response: 31056789
 Conc: 153.50 ng/ml



#35 AR-1260-5

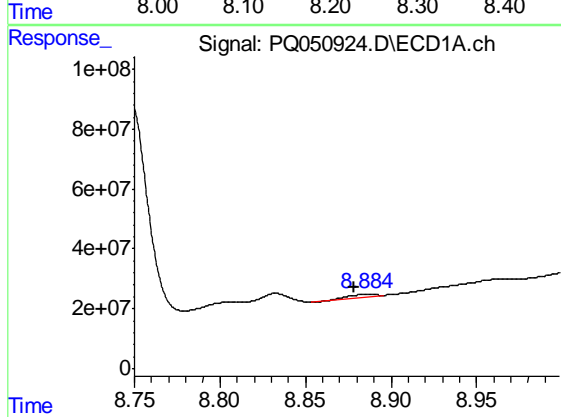
R.T.: 9.471 min
 Delta R.T.: 0.005 min
 Response: 801040707
 Conc: 528.12 ng/ml

Instrument :
 ECD_Q
 ClientSampled :
 C0AW8



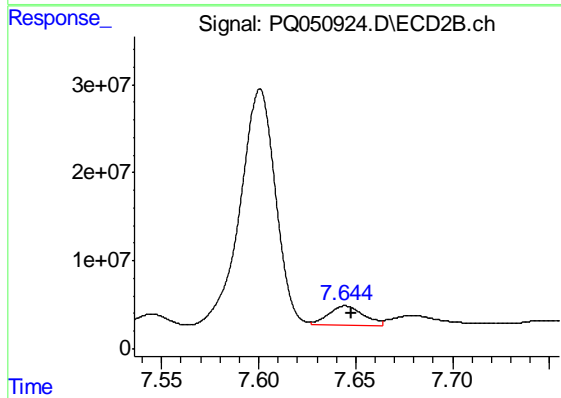
#35 AR-1260-5

R.T.: 8.197 min
 Delta R.T.: -0.009 min
 Response: 8956031
 Conc: 17.66 ng/ml



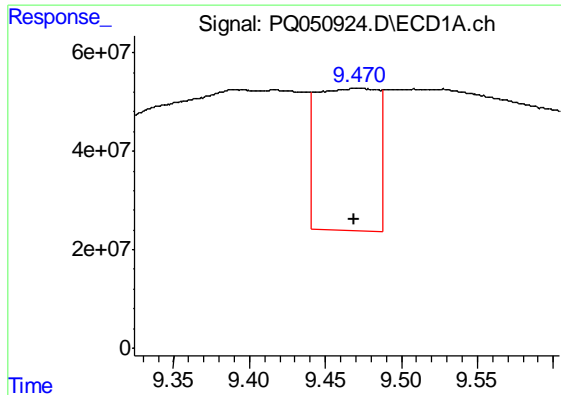
#36 AR-1262-1

R.T.: 8.884 min
 Delta R.T.: 0.006 min
 Response: 8339548
 Conc: 8.46 ng/ml



#36 AR-1262-1

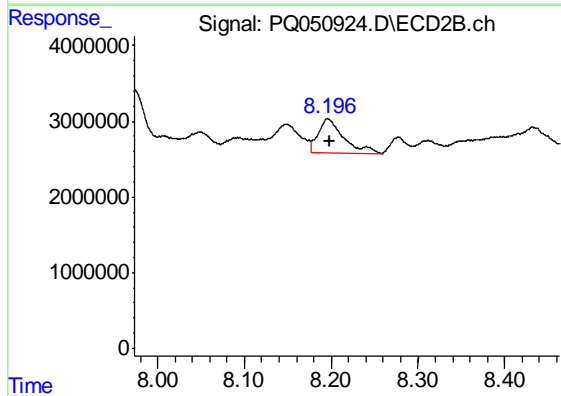
R.T.: 7.645 min
 Delta R.T.: -0.003 min
 Response: 27646213
 Conc: 153.73 ng/ml



#37 AR-1262-2

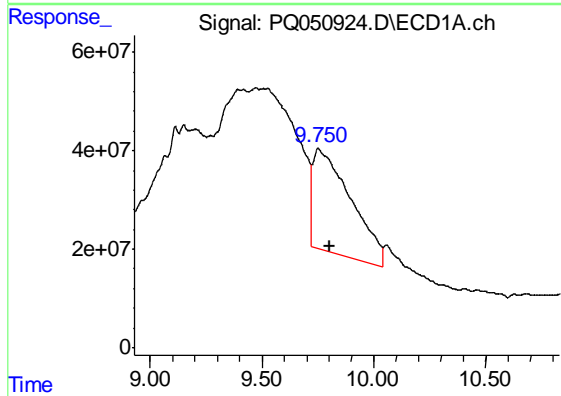
R.T.: 9.471 min
 Delta R.T.: 0.002 min
 Response: 801040707
 Conc: 417.02 ng/ml

Instrument :
 ECD_Q
 ClientSampled :
 C0AW8



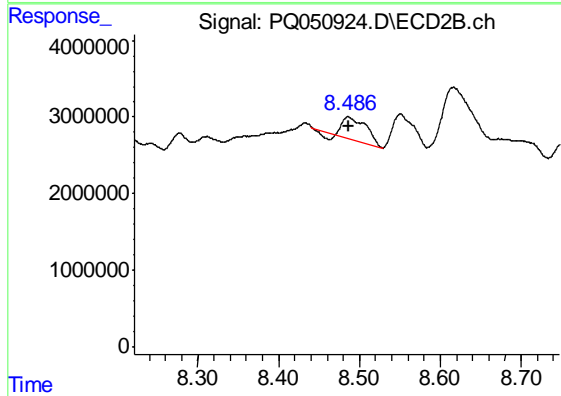
#37 AR-1262-2

R.T.: 8.197 min
 Delta R.T.: -0.001 min
 Response: 8956031
 Conc: 13.44 ng/ml



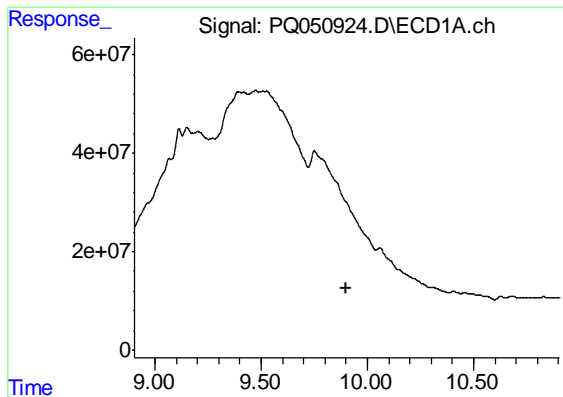
#38 AR-1262-3

R.T.: 9.750 min
 Delta R.T.: -0.053 min
 Response: 2460886777
 Conc: 2993.05 ng/ml



#38 AR-1262-3

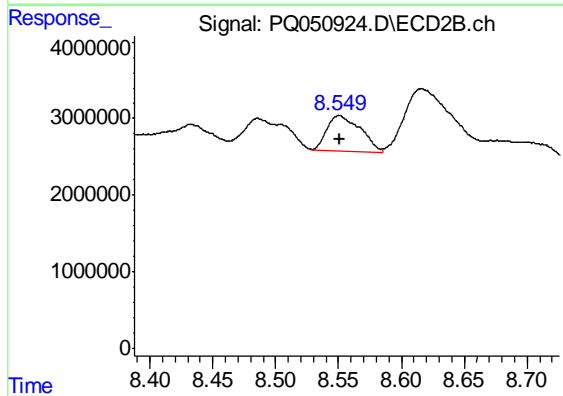
R.T.: 8.486 min
 Delta R.T.: -0.001 min
 Response: 5492110
 Conc: 22.49 ng/ml



#39 AR-1262-4

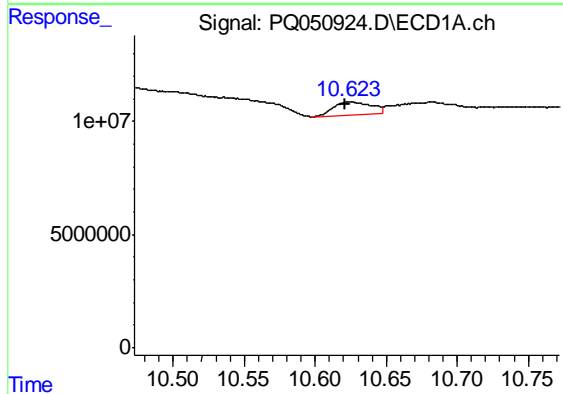
R.T.: 0.000 min
 Exp R.T. : 9.904 min
 Response: 0
 Conc: N.D.

Instrument :
 ECD_Q
 ClientSampled :
 C0AW8



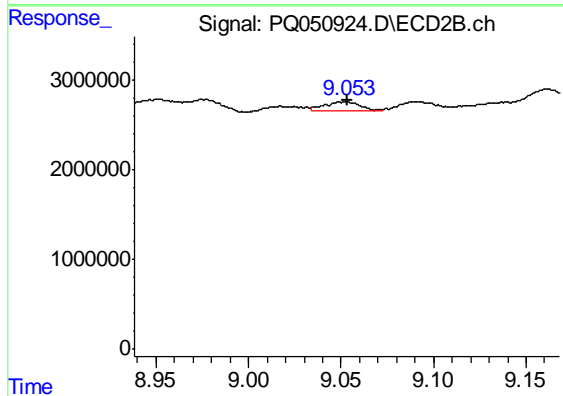
#39 AR-1262-4

R.T.: 8.551 min
 Delta R.T.: 0.000 min
 Response: 8435718
 Conc: 17.69 ng/ml



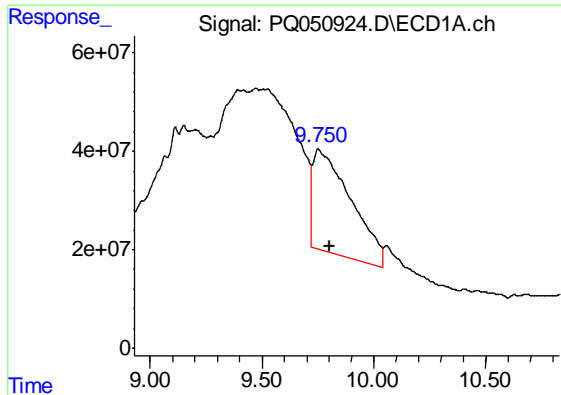
#40 AR-1262-5

R.T.: 10.624 min
 Delta R.T.: 0.003 min
 Response: 10599421
 Conc: 15.50 ng/ml



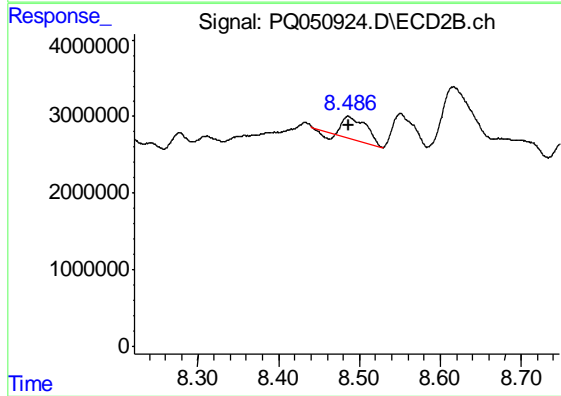
#40 AR-1262-5

R.T.: 9.052 min
 Delta R.T.: -0.002 min
 Response: 1399298
 Conc: 6.62 ng/ml

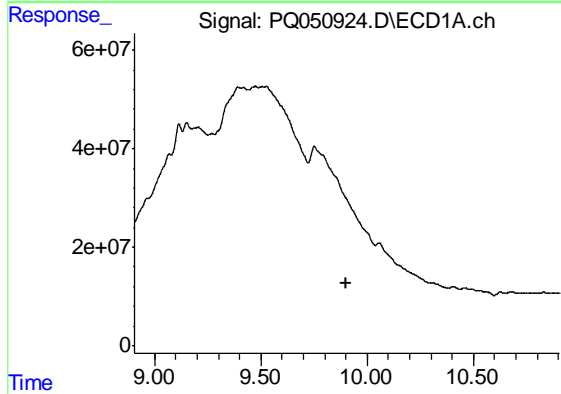


#41 AR-1268-1
 R.T.: 9.750 min
 Delta R.T.: -0.052 min
 Response: 2460886777
 Conc: 1025.77 ng/ml

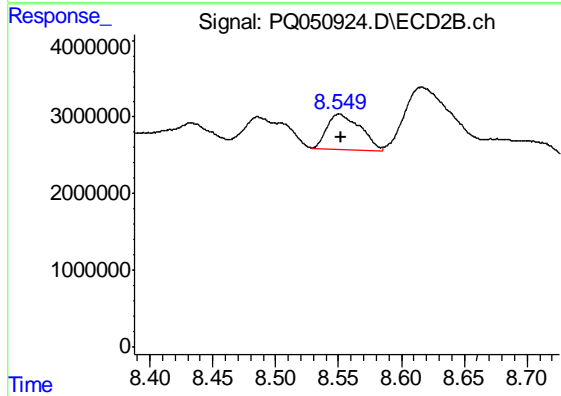
Instrument :
 ECD_Q
 ClientSampled :
 C0AW8



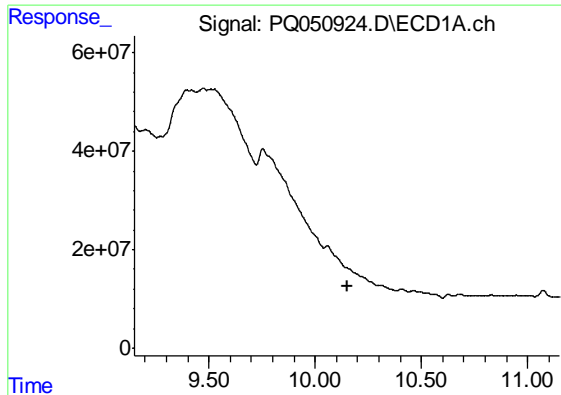
#41 AR-1268-1
 R.T.: 8.486 min
 Delta R.T.: 0.000 min
 Response: 5492110
 Conc: 6.87 ng/ml



#42 AR-1268-2
 R.T.: 0.000 min
 Exp R.T. : 9.905 min
 Response: 0
 Conc: N.D.



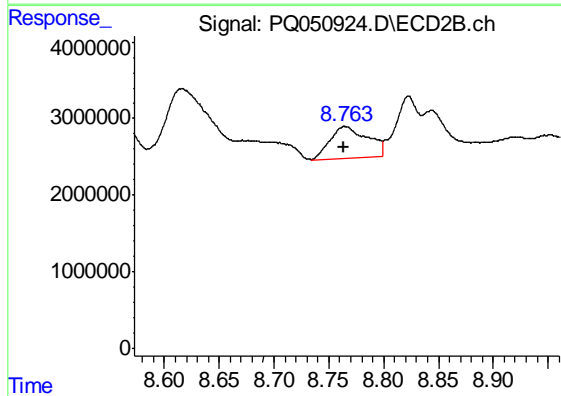
#42 AR-1268-2
 R.T.: 8.551 min
 Delta R.T.: -0.001 min
 Response: 8435718
 Conc: 11.47 ng/ml



#43 AR-1268-3

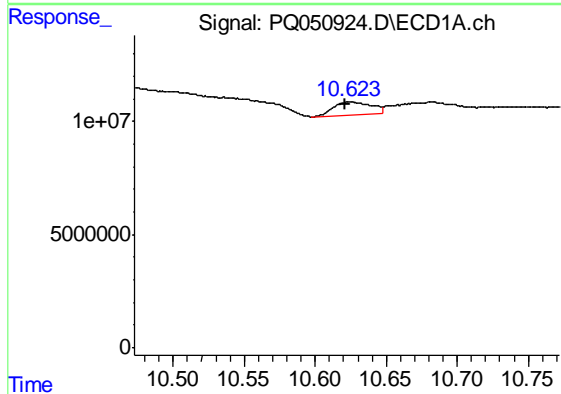
R.T.: 0.000 min
 Exp R.T. : 10.149 min
 Response: 0
 Conc: N.D.

Instrument :
 ECD_Q
 ClientSampled :
 C0AW8



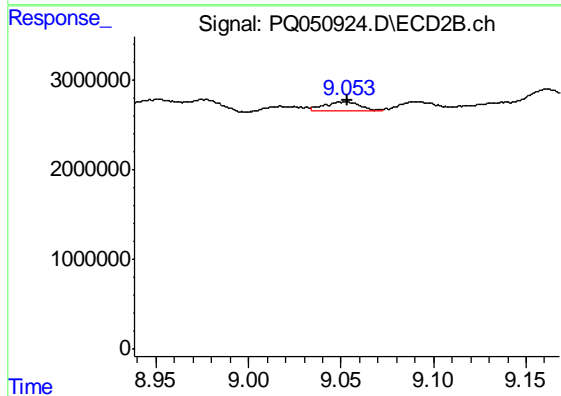
#43 AR-1268-3

R.T.: 8.765 min
 Delta R.T.: 0.001 min
 Response: 9767066
 Conc: 15.94 ng/ml



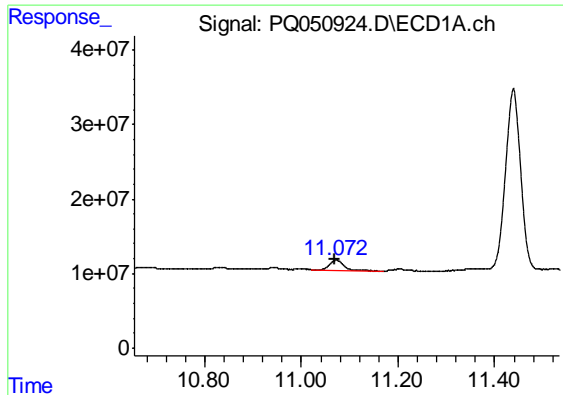
#44 AR-1268-4

R.T.: 10.624 min
 Delta R.T.: 0.004 min
 Response: 10599421
 Conc: 13.22 ng/ml



#44 AR-1268-4

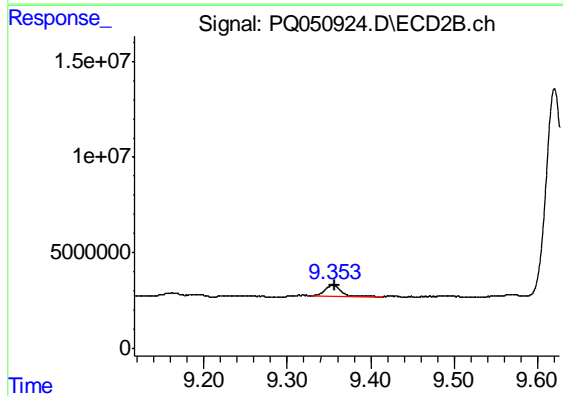
R.T.: 9.052 min
 Delta R.T.: -0.002 min
 Response: 1399298
 Conc: 5.61 ng/ml



#45 AR-1268-5

R.T.: 11.072 min
Delta R.T.: 0.003 min
Response: 26409416
Conc: 4.02 ng/ml

Instrument :
ECD_Q
ClientSampleId :
C0AW8



#45 AR-1268-5

R.T.: 9.354 min
Delta R.T.: -0.002 min
Response: 8317823
Conc: 4.13 ng/ml