

Data Path : Z:\pestpcbsrv\HPCHEM1\ECD\_Q\Data\PQ111320\  
 Data File : PQ050930.D  
 Signal(s) : Signal #1: ECD1A.ch Signal #2: ECD2B.ch  
 Acq On : 13 Nov 2020 17:38  
 Operator : DD\AJ  
 Sample : L4710-09  
 Misc :  
 ALS Vial : 17 Sample Multiplier: 1

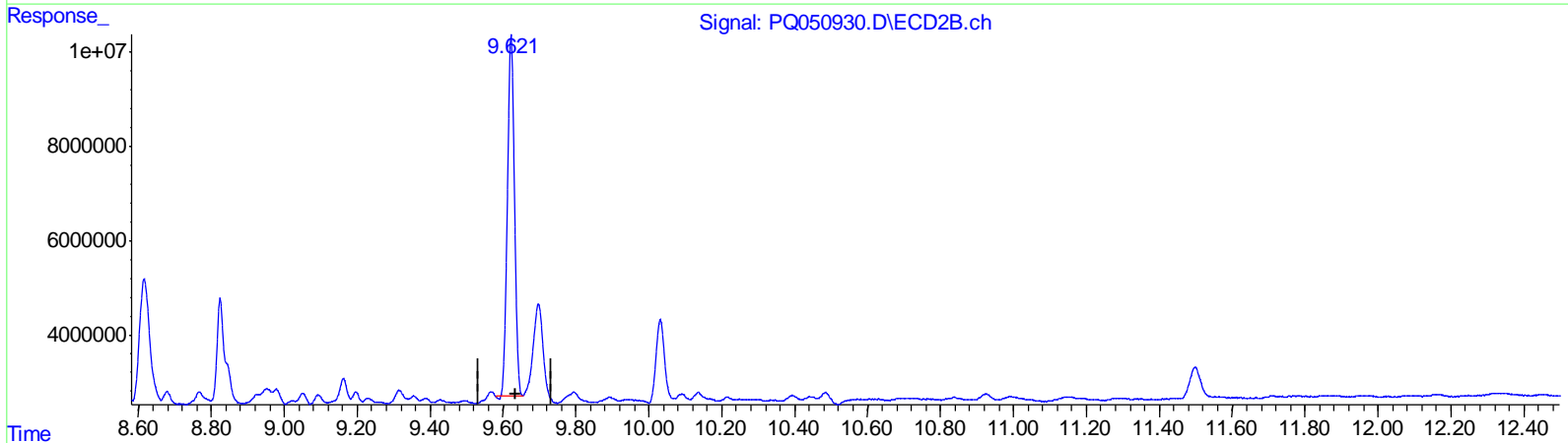
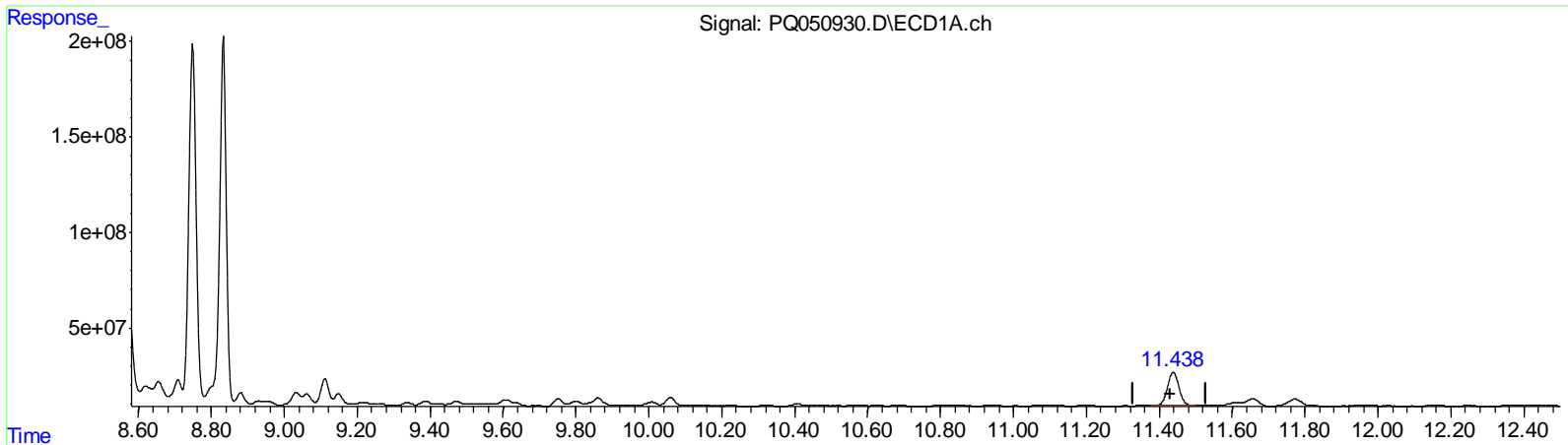
Instrument :  
 ECD\_Q  
 ClientSampleId :  
 C0BE9

Manual Integrations  
 APPROVED

Ankita  
 11/20/2020 5:20:47 PM

Integration File signal 1: autoint1.e  
 Integration File signal 2: autoint2.e  
 Quant Time: Nov 17 01:31:57 2020  
 Quant Method : Z:\pestpcbsrv\HPCHEM1\ECD\_Q\Method\PQ110320CLP.M  
 Quant Title : GC EXTRACTABLES  
 QLast Update : Wed Nov 04 08:52:38 2020  
 Response via : Initial Calibration  
 Integrator: ChemStation

Volume Inj. : 1 µl  
 Signal #1 Phase : ZB MR1 Signal #2 Phase: ZB MR2  
 Signal #1 Info : 30Mx0.32mmx 0.5µm Signal #2 Info : 30M x 0.32mm x 0.25µm



QEdit

(2) Decachlorobiphenyl (SA)  
 11.438min 27.985 ng/ml  
 response 385270237

(2) Decachlorobiphenyl #2 (SA)  
 9.622min 26.703 ng/ml  
 response 102692995

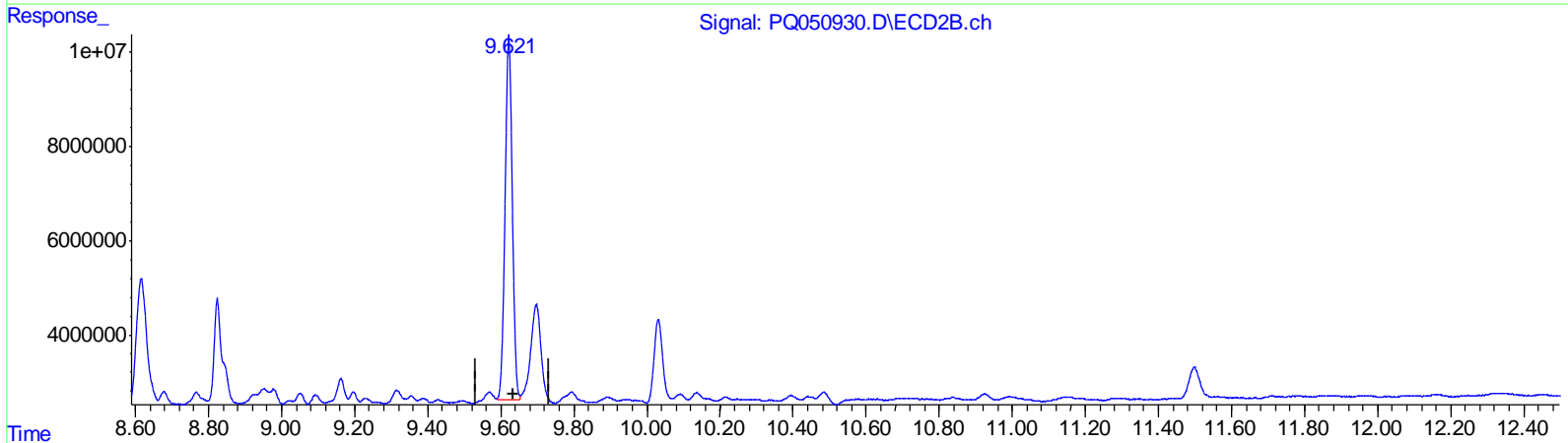
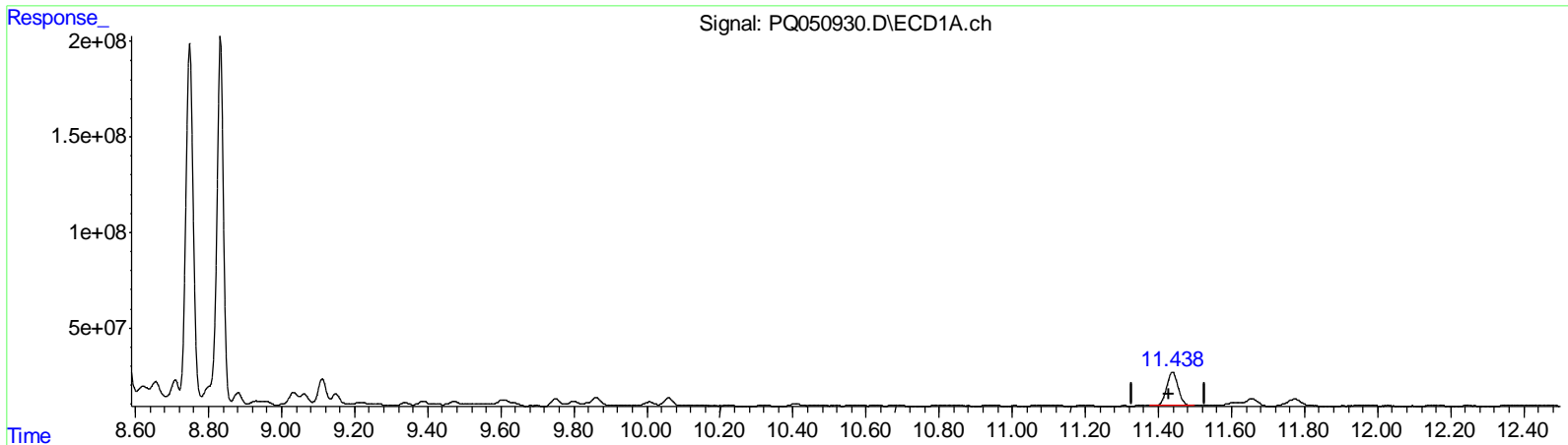
Data Path : Z:\pestpcbsrv\HPCHEM1\ECD\_Q\Data\PQ111320\  
 Data File : PQ050930.D  
 Signal(s) : Signal #1: ECD1A.ch Signal #2: ECD2B.ch  
 Acq On : 13 Nov 2020 17:38  
 Operator : DD\AJ  
 Sample : L4710-09  
 Misc :  
 ALS Vial : 17 Sample Multiplier: 1

**Instrument :**  
 ECD\_Q  
**ClientSampleId :**  
 C0BE9

**Manual Integrations**  
**APPROVED**  
 Ankita  
 11/20/2020 5:20:47 PM

Integration File signal 1: autoint1.e  
 Integration File signal 2: autoint2.e  
 Quant Time: Nov 17 01:31:57 2020  
 Quant Method : Z:\pestpcbsrv\HPCHEM1\ECD\_Q\Method\PQ110320CLP.M  
 Quant Title : GC EXTRACTABLES  
 QLast Update : Wed Nov 04 08:52:38 2020  
 Response via : Initial Calibration  
 Integrator: ChemStation

Volume Inj. : 1 µl  
 Signal #1 Phase : ZB MR1 Signal #2 Phase: ZB MR2  
 Signal #1 Info : 30Mx0.32mmx 0.5µm Signal #2 Info : 30M x 0.32mm x 0.25µm



QEdit

(2) Decachlorobiphenyl (SA)

11.438min 27.985 ng/ml

response 385270237

(2) Decachlorobiphenyl #2 (SA)

9.621min 27.394 ng/ml m

response 105348441

(+) = Expected Retention Time

Data Path : Z:\pestpcbsrv\HPCHEM1\ECD\_Q\Data\PQ111320\  
 Data File : PQ050930.D  
 Signal(s) : Signal #1: ECD1A.ch Signal #2: ECD2B.ch  
 Acq On : 13 Nov 2020 17:38  
 Operator : DD\AJ  
 Sample : L4710-09  
 Misc :  
 ALS Vial : 17 Sample Multiplier: 1

Instrument :  
 ECD\_Q  
 ClientSampled :  
 C0BE9

Manual Integrations  
**APPROVED**  
 Ankita  
 11/20/2020 5:20:47 PM

Integration File signal 1: autoint1.e  
 Integration File signal 2: autoint2.e  
 Quant Time: Nov 17 01:31:57 2020  
 Quant Method : Z:\pestpcbsrv\HPCHEM1\ECD\_Q\Method\PQ110320CLP.M  
 Quant Title : GC EXTRACTABLES  
 QLast Update : Wed Nov 04 08:52:38 2020  
 Response via : Initial Calibration  
 Integrator: ChemStation

Volume Inj. : 1 µl  
 Signal #1 Phase : ZB MR1 Signal #2 Phase: ZB MR2  
 Signal #1 Info : 30Mx0.32mmx 0.5µm Signal #2 Info : 30M x 0.32mm x 0.25µm

Compound	RT#1	RT#2	Resp#1	Resp#2	ng/ml	ng/ml
-----						
System Monitoring Compounds						
1) SA Tetrachlo...	5.238	4.259	370.1E6	95834928	21.064	21.303
2) SA Decachlor...	11.438	9.621	385.3E6	105.3E6	27.985	27.394m

AJ  
 11/23/20

Target Compounds

(f)=RT Delta > 1/2 Window (#)=Amounts differ by > 25% (m)=manual int.