

Data Path : Z:\pestpcbsrv\HPCHEM1\ECD\_Q\Data\PQ111323\  
 Data File : PQ064029.D  
 Signal(s) : Signal #1: ECD1A.ch Signal #2: ECD2B.ch  
 Acq On : 13 Nov 2023 17:34  
 Operator : YP\AJ  
 Sample : AR1242CCC500  
 Misc :  
 ALS Vial : 4 Sample Multiplier: 1

Instrument :  
 ECD\_Q  
 ClientSampleId :  
 AR1242CCC500

Integration File signal 1: autoint1.e  
 Integration File signal 2: autoint2.e  
 Quant Time: Nov 13 19:56:17 2023  
 Quant Method : Z:\pestpcbsrv\HPCHEM1\ECD\_Q\Method\PQ110823.M  
 Quant Title : GC EXTRACTABLES  
 QLast Update : Wed Nov 08 18:43:53 2023  
 Response via : Initial Calibration  
 Integrator: ChemStation

Volume Inj. : 2 µl  
 Signal #1 Phase : ZB-MR1 Signal #2 Phase: ZB-MR2  
 Signal #1 Info : 30Mx0.32mmx 0.50µ Signal #2 Info : 30M x 0.32mm x 0.25µm

Compound	RT#1	RT#2	Resp#1	Resp#2	ng/ml	ng/ml
-----						
System Monitoring Compounds						
1) SA Tetrachlo...	3.460	2.777	217.8E6	209.8E6	51.103	57.047
2) SA Decachlor...	8.693	7.574	142.2E6	213.5E6	44.037	45.558
Target Compounds						
16) L4 AR-1242-1	4.575	3.787	56576946	52940172	502.084	514.648
17) L4 AR-1242-2	4.593	3.802	84135792	77984350	497.551	528.451
18) L4 AR-1242-3	4.652	3.963	52751573	41573570	499.798	522.574
19) L4 AR-1242-4	4.745	4.050	42356724	39526234	499.209	520.865
20) L4 AR-1242-5	5.467	4.548	40522603	51882153	458.287	515.758
-----						

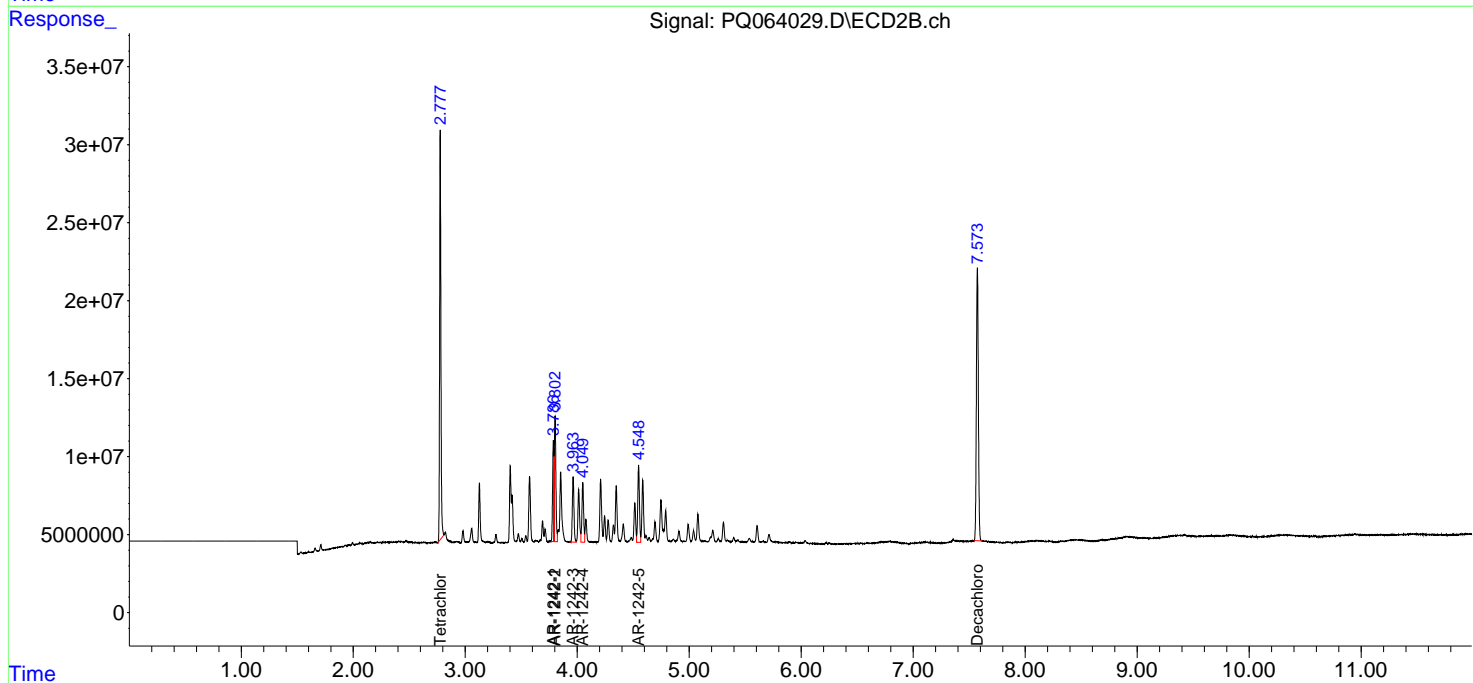
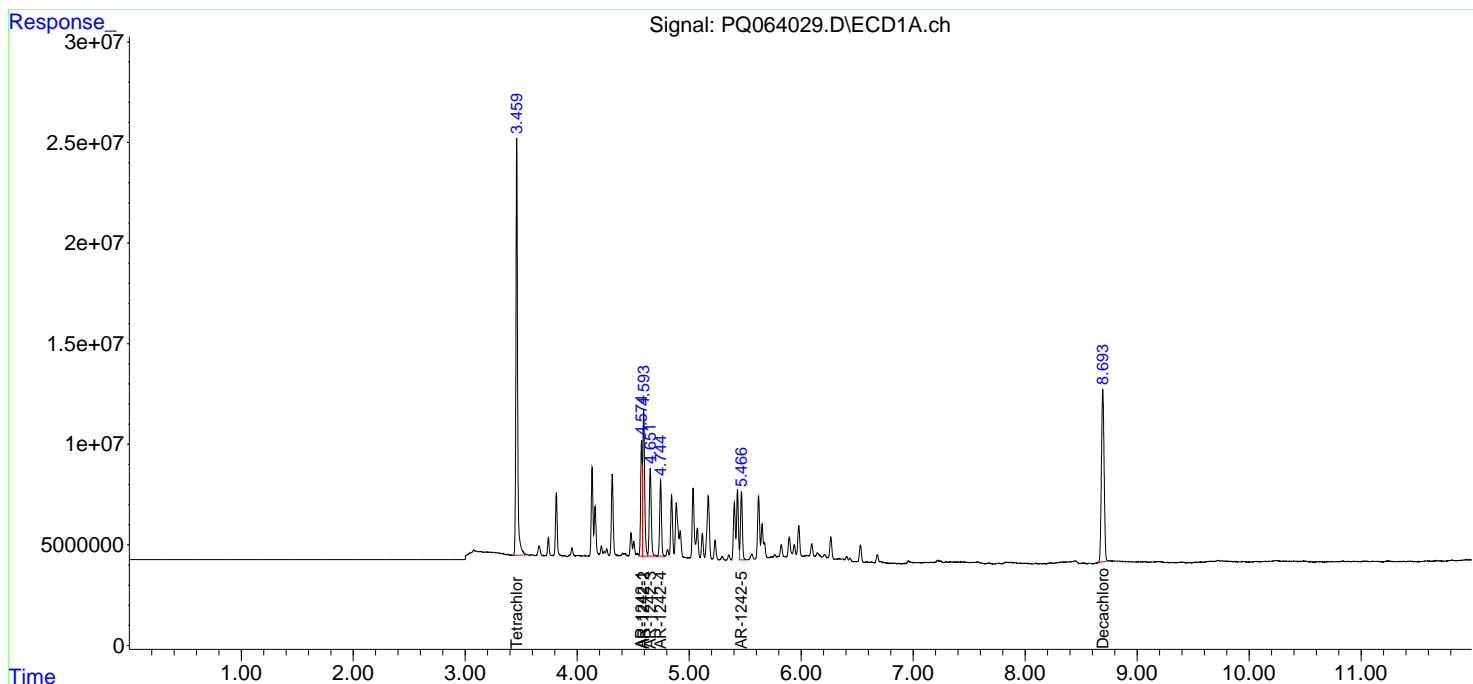
(f)=RT Delta > 1/2 Window (#)=Amounts differ by > 25% (m)=manual int.

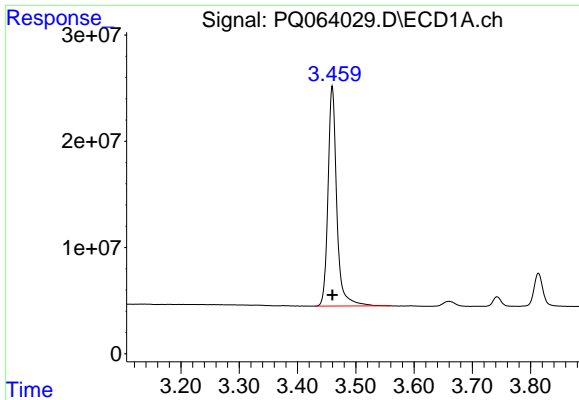
Data Path : Z:\pestpcbsrv\HPCHEM1\ECD\_Q\Data\PQ111323\  
 Data File : PQ064029.D  
 Signal(s) : Signal #1: ECD1A.ch Signal #2: ECD2B.ch  
 Acq On : 13 Nov 2023 17:34  
 Operator : YP\AJ  
 Sample : AR1242CCC500  
 Misc :  
 ALS Vial : 4 Sample Multiplier: 1

Instrument :  
 ECD\_Q  
 ClientSampleId :  
 AR1242CCC500

Integration File signal 1: autoint1.e  
 Integration File signal 2: autoint2.e  
 Quant Time: Nov 13 19:56:17 2023  
 Quant Method : Z:\pestpcbsrv\HPCHEM1\ECD\_Q\Method\PQ110823.M  
 Quant Title : GC EXTRACTABLES  
 QLast Update : Wed Nov 08 18:43:53 2023  
 Response via : Initial Calibration  
 Integrator: ChemStation

Volume Inj. : 2 µl  
 Signal #1 Phase : ZB-MR1 Signal #2 Phase: ZB-MR2  
 Signal #1 Info : 30Mx0.32mmx 0.50µ Signal #2 Info : 30M x 0.32mm x 0.25µm

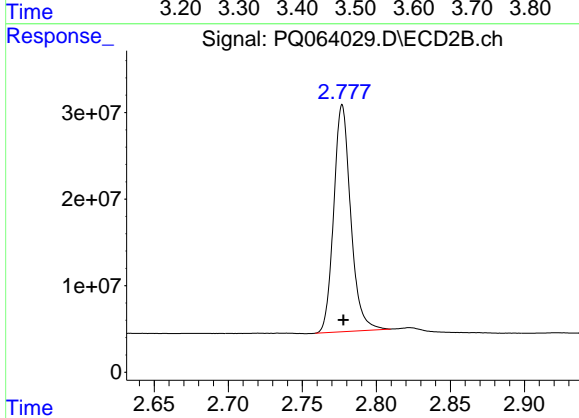




#1 Tetrachloro-m-xylene

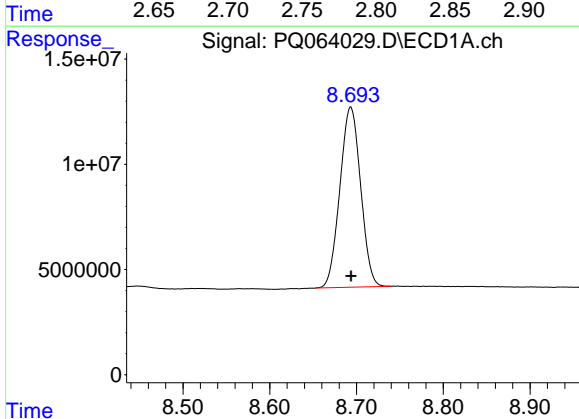
R.T.: 3.460 min  
 Delta R.T.: 0.000 min  
 Response: 217825727  
 Conc: 51.10 ng/ml

Instrument :  
 ECD\_Q  
 ClientSampleId :  
 AR1242CCC500



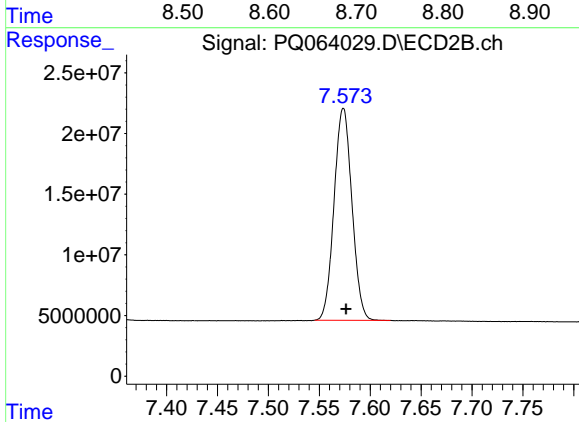
#1 Tetrachloro-m-xylene

R.T.: 2.777 min  
 Delta R.T.: 0.000 min  
 Response: 209802044  
 Conc: 57.05 ng/ml



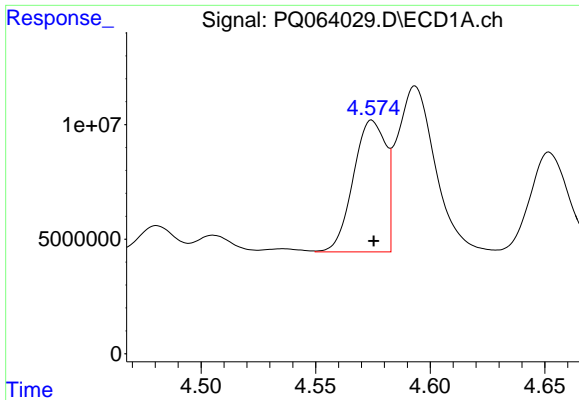
#2 Decachlorobiphenyl

R.T.: 8.693 min  
 Delta R.T.: 0.000 min  
 Response: 142180132  
 Conc: 44.04 ng/ml



#2 Decachlorobiphenyl

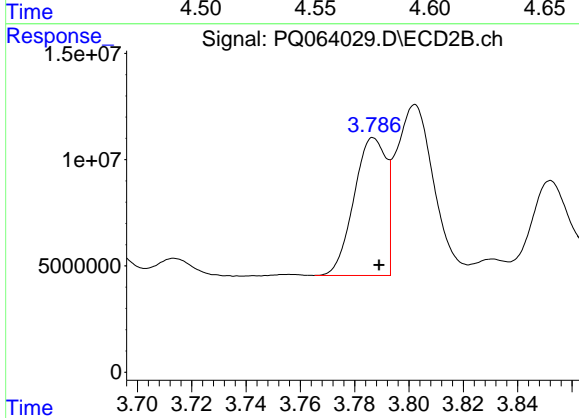
R.T.: 7.574 min  
 Delta R.T.: -0.003 min  
 Response: 213459529  
 Conc: 45.56 ng/ml



#16 AR-1242-1

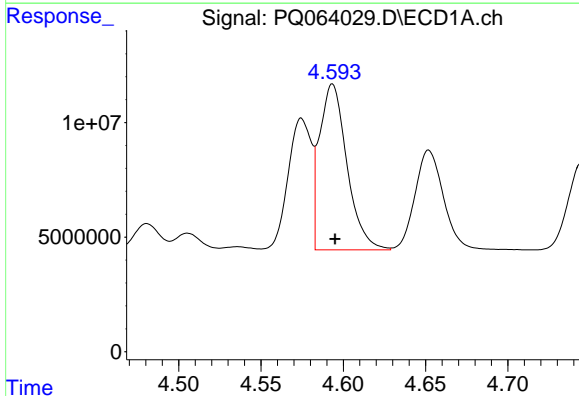
R.T.: 4.575 min  
 Delta R.T.: 0.000 min  
 Response: 56576946  
 Conc: 502.08 ng/ml

Instrument :  
 ECD\_Q  
 ClientSampleId :  
 AR1242CCC500



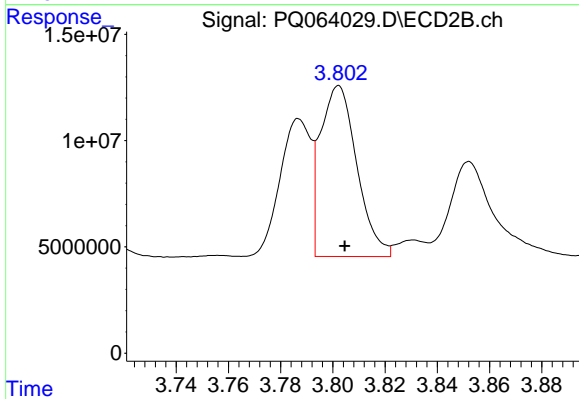
#16 AR-1242-1

R.T.: 3.787 min  
 Delta R.T.: -0.002 min  
 Response: 52940172  
 Conc: 514.65 ng/ml



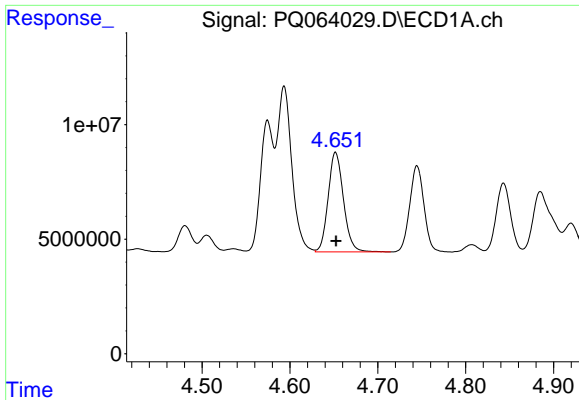
#17 AR-1242-2

R.T.: 4.593 min  
 Delta R.T.: -0.002 min  
 Response: 84135792  
 Conc: 497.55 ng/ml



#17 AR-1242-2

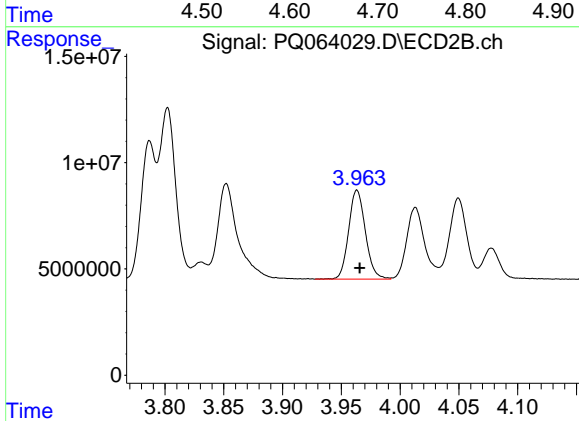
R.T.: 3.802 min  
 Delta R.T.: -0.002 min  
 Response: 77984350  
 Conc: 528.45 ng/ml



#18 AR-1242-3

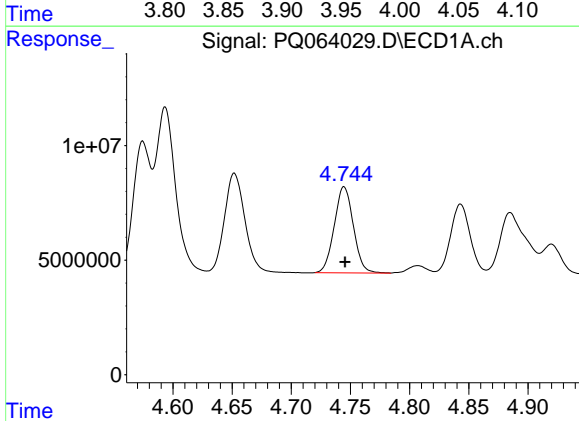
R.T.: 4.652 min  
 Delta R.T.: 0.000 min  
 Response: 52751573  
 Conc: 499.80 ng/ml

Instrument :  
 ECD\_Q  
 ClientSampleId :  
 AR1242CCC500



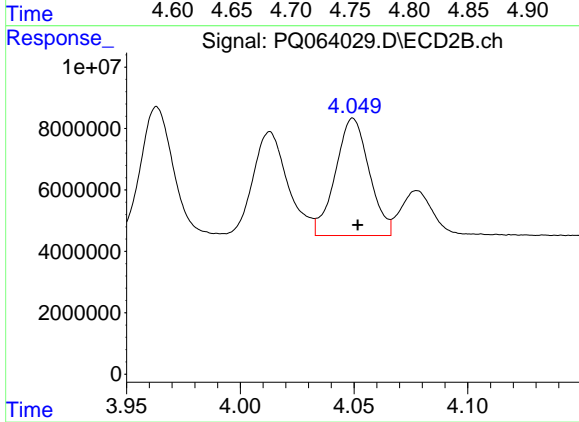
#18 AR-1242-3

R.T.: 3.963 min  
 Delta R.T.: -0.002 min  
 Response: 41573570  
 Conc: 522.57 ng/ml



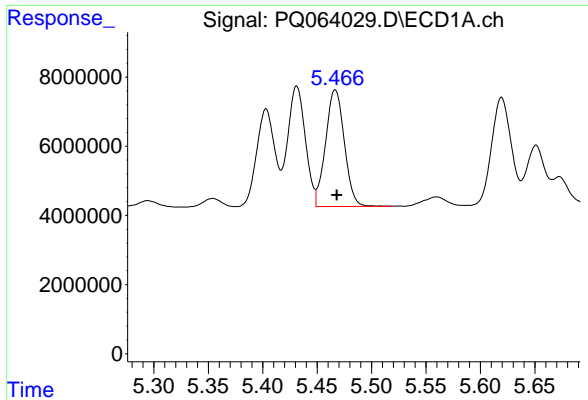
#19 AR-1242-4

R.T.: 4.745 min  
 Delta R.T.: 0.000 min  
 Response: 42356724  
 Conc: 499.21 ng/ml



#19 AR-1242-4

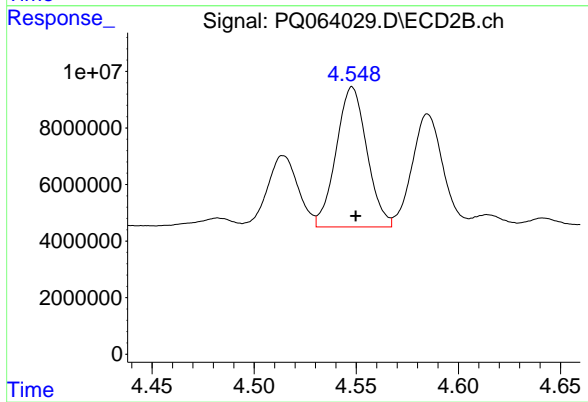
R.T.: 4.050 min  
 Delta R.T.: -0.002 min  
 Response: 39526234  
 Conc: 520.86 ng/ml



#20 AR-1242-5

R.T.: 5.467 min  
Delta R.T.: -0.001 min  
Response: 40522603  
Conc: 458.29 ng/ml

Instrument :  
ECD\_Q  
ClientSampleId :  
AR1242CCC500



#20 AR-1242-5

R.T.: 4.548 min  
Delta R.T.: -0.002 min  
Response: 51882153  
Conc: 515.76 ng/ml