

Data Path : Z:\pestpcbsrv\HPCHEM1\ECD_Q\Data\PQ111418\
 Data File : PQ034540.D
 Signal(s) : Signal #1: ECD1A.ch Signal #2: ECD2B.ch
 Acq On : 13 Nov 2018 21:47
 Operator : SM\SJ
 Sample : PB114666BS
 Misc :
 ALS Vial : 21 Sample Multiplier: 1

Instrument :
 ECD_Q
 ClientSampled :

Integration File signal 1: autoint1.e
 Integration File signal 2: autoint2.e
 Quant Time: Nov 14 06:10:52 2018
 Quant Method : Z:\pestpcbsrv\HPCHEM1\ECD_Q\Method\PQ110618.M
 Quant Title : GC EXTRACTABLES
 QLast Update : Fri Nov 09 08:12:53 2018
 Response via : Initial Calibration
 Integrator: ChemStation

Volume Inj. : 2 µl
 Signal #1 Phase : ZB-MR1 Signal #2 Phase: ZB-MR2
 Signal #1 Info : 30Mx0.32mmx 0.50µ Signal #2 Info : 30M x 0.32mm x 0.25µm

Compound	RT#1	RT#2	Resp#1	Resp#2	ng/ml	ng/ml
System Monitoring Compounds						
1) SA Tetrachlo...	4.542	3.824	57926769	39629051	19.761	20.763
2) SA Decachlor...	10.338	8.851	40399978	28961360	15.738	14.738
Target Compounds						
3) L1 AR-1016-1	5.738	4.912	24957748	12082928	263.318	171.057 #
4) L1 AR-1016-2	5.738	4.931	24957748	16015357	176.809	158.866
5) L1 AR-1016-3	5.801	5.108	15019429	8641418	176.755	168.271
6) L1 AR-1016-4	5.901	5.147	8710983	6861059	128.312	166.715 #
7) L1 AR-1016-5	6.193	5.362	7226348	8391644	102.443	157.345 #
9) L2 AR-1221-2	4.841	4.124	2326110	1764412	109.163	114.064
10) L2 AR-1221-3	4.917	4.200	8098098	6627049	119.196	129.836
11) L3 AR-1232-1	4.917	4.200	8098098	6627049	157.122	175.147
12) L3 AR-1232-2	5.448	4.931	13110962	16015357	466.764	402.963
13) L3 AR-1232-3	5.738	5.108	24957748	8641418	439.175	420.020
14) L3 AR-1232-4	5.901	5.189	8710983	8739748	311.947	471.645 #
15) L3 AR-1232-5	5.988	5.362	10947371	8391644	545.438	415.253
16) L4 AR-1242-1	5.738	4.931	24957748	16015357	317.547	289.778
17) L4 AR-1242-2	5.738	4.931	24957748	16015357	213.479	200.302
18) L4 AR-1242-3	5.801	5.108	15019429	8641418	212.329	209.328
19) L4 AR-1242-4	5.901	5.189	8710983	8739748	151.738	217.168 #
20) L4 AR-1242-5	6.636	5.713	1345383	6969293	20.815	133.475 #
21) L5 AR-1248-1	5.738	4.912	24957748	12082928	384.478	260.603 #
22) L5 AR-1248-2	5.988	5.147	10947371	6861059	117.435	109.364
23) L5 AR-1248-3	6.193	5.189	7226348	8739748	67.704	135.113 #
24) L5 AR-1248-4	6.636	5.362	1345383	8391644	11.071	105.307 #
25) L5 AR-1248-5	6.636	5.713	1345383	6969293	11.514	86.640 #
26) L6 AR-1254-1	6.570	5.713	8350405	6969293	73.885	60.277
27) L6 AR-1254-2	6.786	5.859	8909909	6975765	49.682	69.715 #
28) L6 AR-1254-3	7.157	6.275	6173925	12270289	31.756	71.007 #
29) L6 AR-1254-4	7.442	6.492	3109451	1376641	21.728	12.630 #
30) L6 AR-1254-5	7.859	6.907	28681900	23967817	182.171	157.946
31) L7 AR-1260-1	7.318	6.392	20036975	17526272	145.323	152.284
32) L7 AR-1260-2	7.574	6.579	24437833	21659365	141.985	152.549
33) L7 AR-1260-3	7.932	6.733	14955095	18884181	146.819	143.336
34) L7 AR-1260-4	8.163	7.203	18191617	13662969	140.027	150.573
35) L7 AR-1260-5	8.491	7.444	35483582	32152611	142.279	138.351
36) L8 AR-1262-1	7.932	6.942	14955095	14769719	81.185	98.363
37) L8 AR-1262-2	8.491	7.444	35483582	32152611	104.324	111.579
38) L8 AR-1262-3	8.829	7.725	21844684	6313896	98.346	59.105 #
39) L8 AR-1262-4	8.882	7.790	11917740	22931665	141.377	111.986
40) L8 AR-1262-5	9.575	8.292	4421332	6704754	38.883	73.554 #
41) L9 AR-1268-1	8.829	7.725	21844684	6313896	49.573	17.739 #
42) L9 AR-1268-2	8.882	7.790	11917740	22931665	30.014	71.774 #

Data Path : Z:\pestpcbsrv\HPCHEM1\ECD_Q\Data\PQ111418\
 Data File : PQ034540.D
 Signal(s) : Signal #1: ECD1A.ch Signal #2: ECD2B.ch
 Acq On : 13 Nov 2018 21:47
 Operator : SM\SJ
 Sample : PB114666BS
 Misc :
 ALS Vial : 21 Sample Multiplier: 1

Instrument :
 ECD_Q
 ClientSampleId :

Integration File signal 1: autoint1.e
 Integration File signal 2: autoint2.e
 Quant Time: Nov 14 06:10:52 2018
 Quant Method : Z:\pestpcbsrv\HPCHEM1\ECD_Q\Method\PQ110618.M
 Quant Title : GC EXTRACTABLES
 QLast Update : Fri Nov 09 08:12:53 2018
 Response via : Initial Calibration
 Integrator: ChemStation

Volume Inj. : 2 µl
 Signal #1 Phase : ZB-MR1 Signal #2 Phase: ZB-MR2
 Signal #1 Info : 30Mx0.32mmx 0.50µ Signal #2 Info : 30M x 0.32mm x 0.25µm

	Compound	RT#1	RT#2	Resp#1	Resp#2	ng/ml	ng/ml
44)	L9 AR-1268-4	9.575	8.292	4421332	6704754	32.292	60.309 #
45)	L9 AR-1268-5	9.998	8.592	2822432	2097312	2.476	2.424

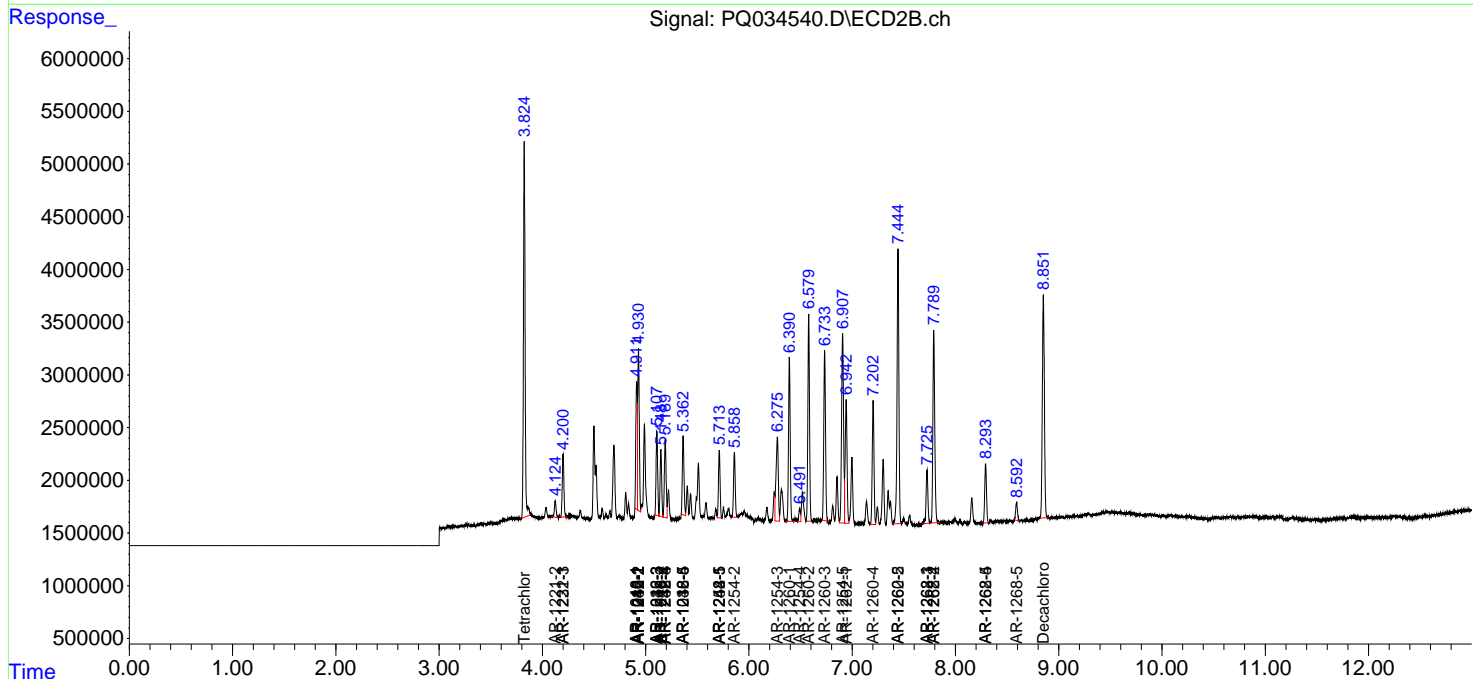
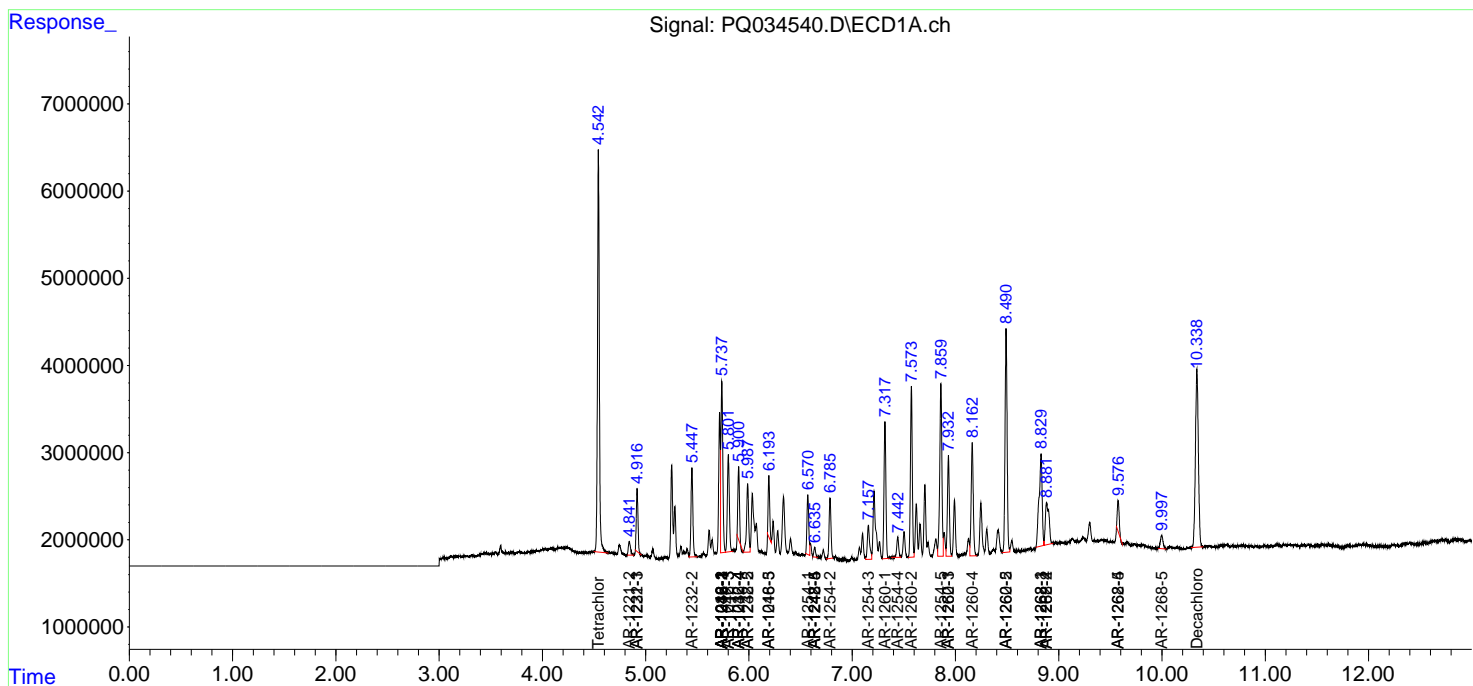
(f)=RT Delta > 1/2 Window (#)=Amounts differ by > 25% (m)=manual int.

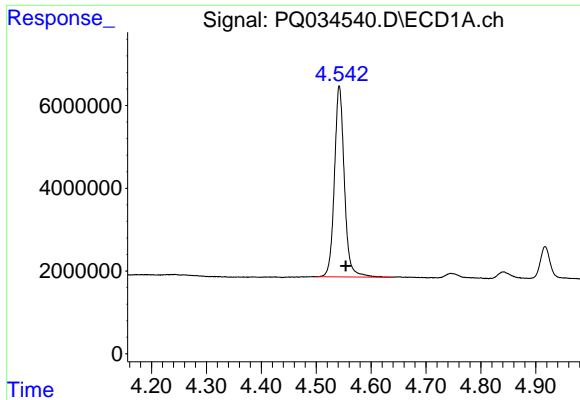
Data Path : Z:\pestpcbsrv\HPCHEM1\ECD_Q\Data\PQ111418\
 Data File : PQ034540.D
 Signal(s) : Signal #1: ECD1A.ch Signal #2: ECD2B.ch
 Acq On : 13 Nov 2018 21:47
 Operator : SM\SJ
 Sample : PB114666BS
 Misc :
 ALS Vial : 21 Sample Multiplier: 1

Instrument :
 ECD_Q
 ClientSampled :

Integration File signal 1: autoint1.e
 Integration File signal 2: autoint2.e
 Quant Time: Nov 14 06:10:52 2018
 Quant Method : Z:\pestpcbsrv\HPCHEM1\ECD_Q\Method\PQ110618.M
 Quant Title : GC EXTRACTABLES
 QLast Update : Fri Nov 09 08:12:53 2018
 Response via : Initial Calibration
 Integrator: ChemStation

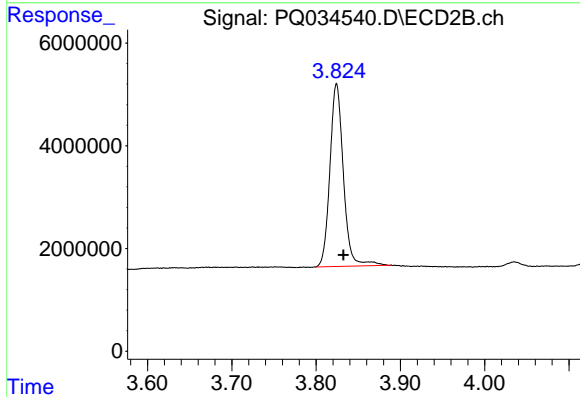
Volume Inj. : 2 µl
 Signal #1 Phase : ZB-MR1 Signal #2 Phase: ZB-MR2
 Signal #1 Info : 30Mx0.32mmx 0.50µ Signal #2 Info : 30M x 0.32mm x 0.25µm



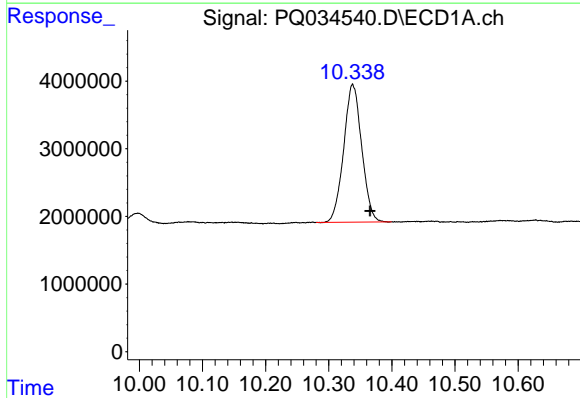


#1 Tetrachloro-m-xylene
R.T.: 4.542 min
Delta R.T.: -0.012 min
Response: 57926769
Conc: 19.76 ng/ml

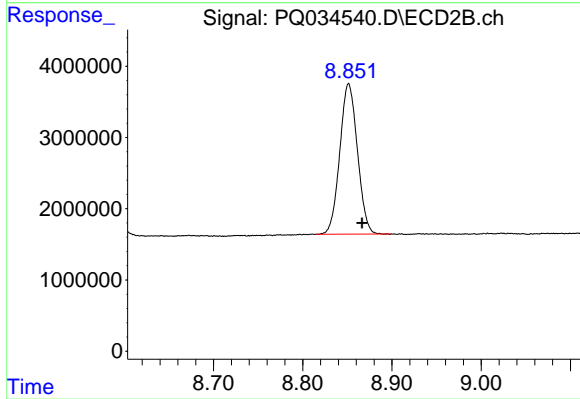
Instrument :
ECD_Q
ClientSampled :



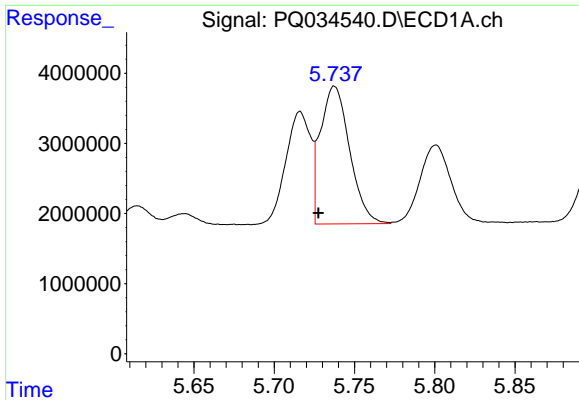
#1 Tetrachloro-m-xylene
R.T.: 3.824 min
Delta R.T.: -0.008 min
Response: 39629051
Conc: 20.76 ng/ml



#2 Decachlorobiphenyl
R.T.: 10.338 min
Delta R.T.: -0.028 min
Response: 40399978
Conc: 15.74 ng/ml

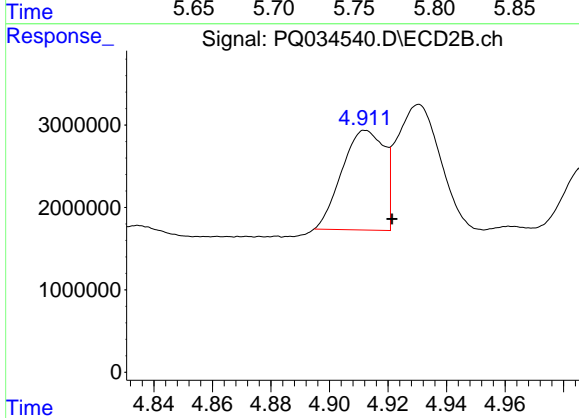


#2 Decachlorobiphenyl
R.T.: 8.851 min
Delta R.T.: -0.015 min
Response: 28961360
Conc: 14.74 ng/ml

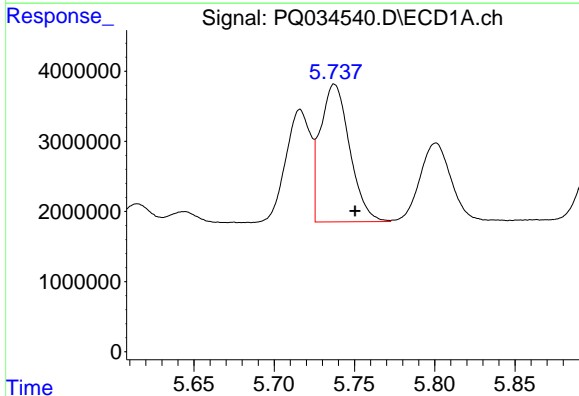


#3 AR-1016-1
 R.T.: 5.738 min
 Delta R.T.: 0.010 min
 Response: 24957748
 Conc: 263.32 ng/ml

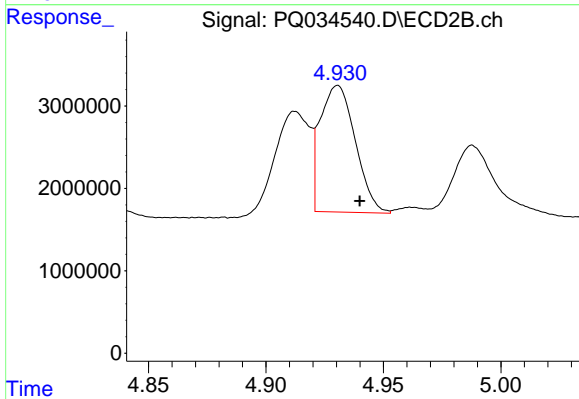
Instrument :
 ECD_Q
 ClientSampled :



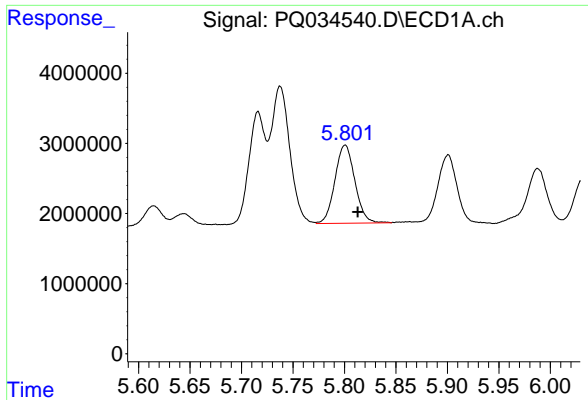
#3 AR-1016-1
 R.T.: 4.912 min
 Delta R.T.: -0.009 min
 Response: 12082928
 Conc: 171.06 ng/ml



#4 AR-1016-2
 R.T.: 5.738 min
 Delta R.T.: -0.013 min
 Response: 24957748
 Conc: 176.81 ng/ml

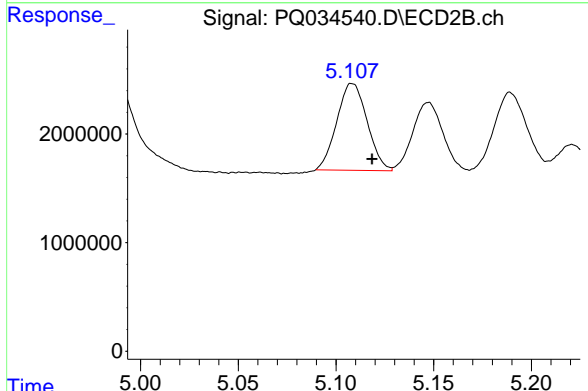


#4 AR-1016-2
 R.T.: 4.931 min
 Delta R.T.: -0.009 min
 Response: 16015357
 Conc: 158.87 ng/ml

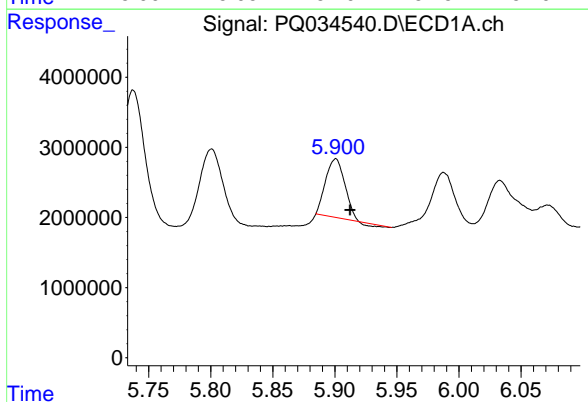


#5 AR-1016-3
 R.T.: 5.801 min
 Delta R.T.: -0.012 min
 Response: 15019429
 Conc: 176.76 ng/ml

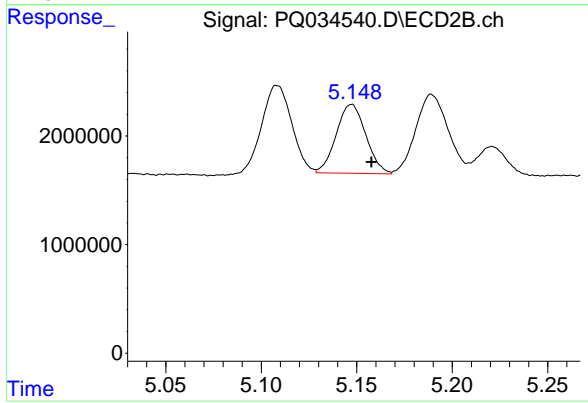
Instrument :
 ECD_Q
 ClientSampleId :



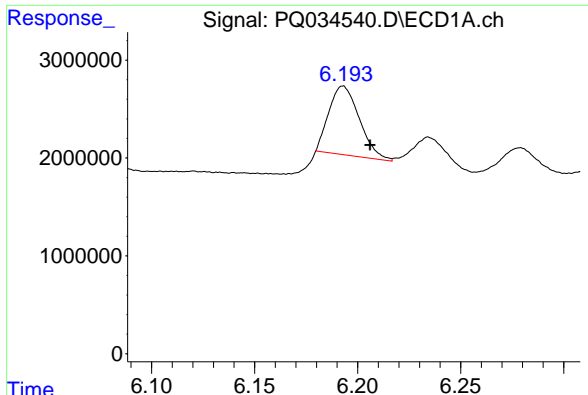
#5 AR-1016-3
 R.T.: 5.108 min
 Delta R.T.: -0.010 min
 Response: 8641418
 Conc: 168.27 ng/ml



#6 AR-1016-4
 R.T.: 5.901 min
 Delta R.T.: -0.012 min
 Response: 8710983
 Conc: 128.31 ng/ml

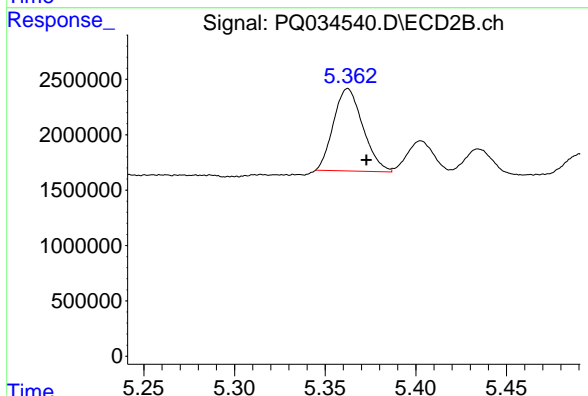


#6 AR-1016-4
 R.T.: 5.147 min
 Delta R.T.: -0.010 min
 Response: 6861059
 Conc: 166.71 ng/ml

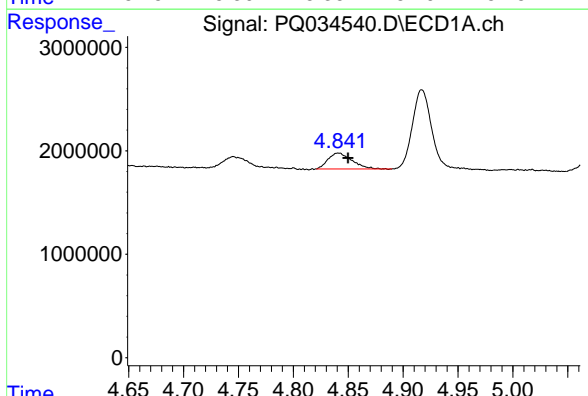


#7 AR-1016-5
 R.T.: 6.193 min
 Delta R.T.: -0.013 min
 Response: 7226348
 Conc: 102.44 ng/ml

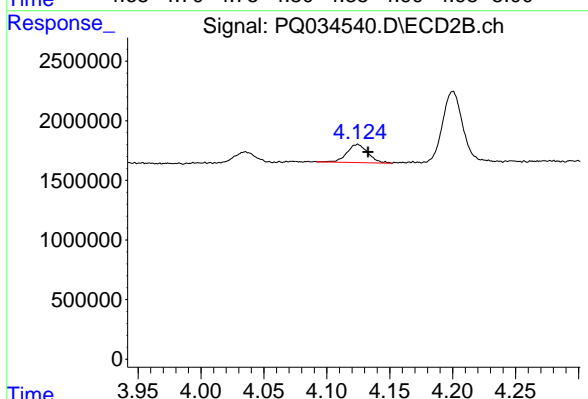
Instrument :
 ECD_Q
 ClientSampleId :



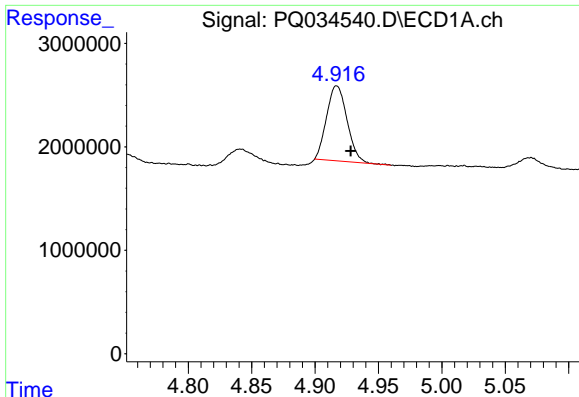
#7 AR-1016-5
 R.T.: 5.362 min
 Delta R.T.: -0.010 min
 Response: 8391644
 Conc: 157.34 ng/ml



#9 AR-1221-2
 R.T.: 4.841 min
 Delta R.T.: -0.009 min
 Response: 2326110
 Conc: 109.16 ng/ml



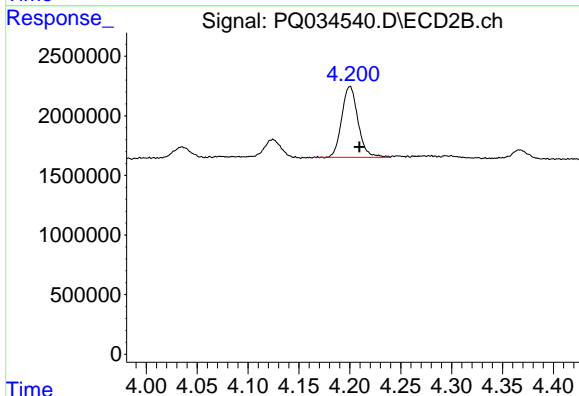
#9 AR-1221-2
 R.T.: 4.124 min
 Delta R.T.: -0.008 min
 Response: 1764412
 Conc: 114.06 ng/ml



#10 AR-1221-3

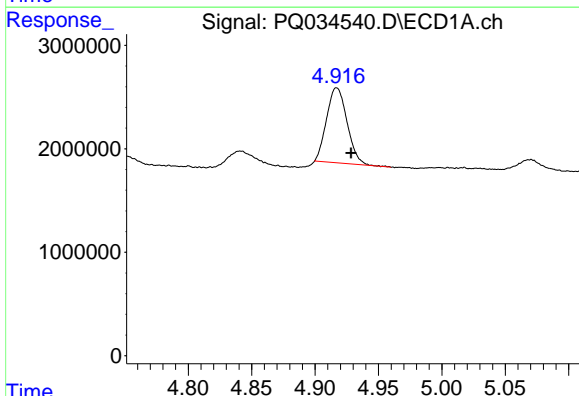
R.T.: 4.917 min
 Delta R.T.: -0.011 min
 Response: 8098098
 Conc: 119.20 ng/ml

Instrument :
 ECD_Q
 ClientSampled :



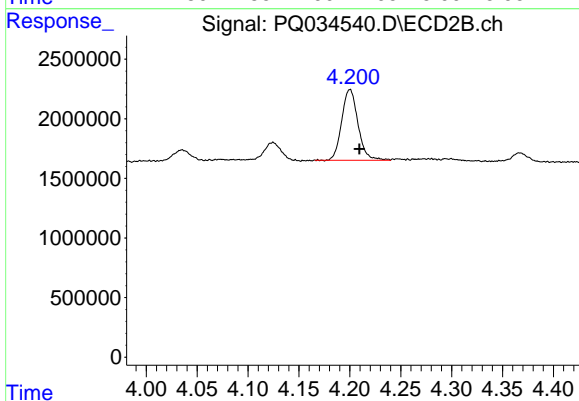
#10 AR-1221-3

R.T.: 4.200 min
 Delta R.T.: -0.009 min
 Response: 6627049
 Conc: 129.84 ng/ml



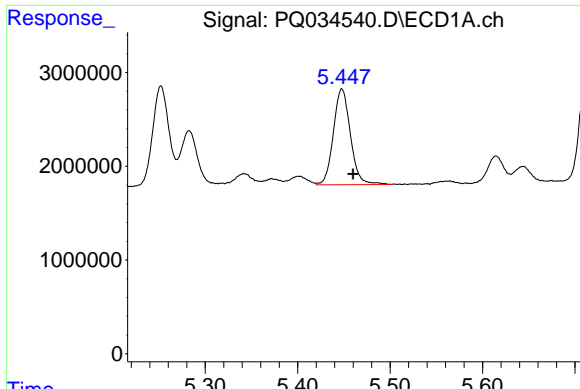
#11 AR-1232-1

R.T.: 4.917 min
 Delta R.T.: -0.011 min
 Response: 8098098
 Conc: 157.12 ng/ml



#11 AR-1232-1

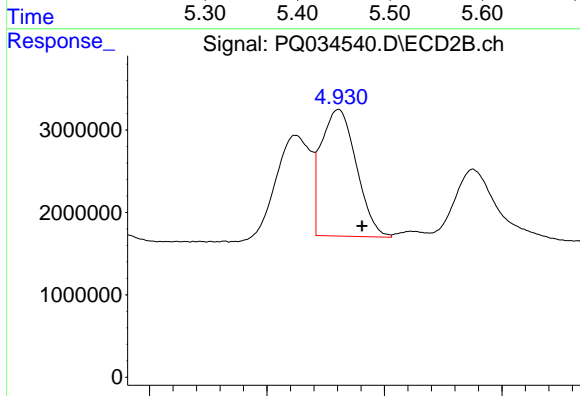
R.T.: 4.200 min
 Delta R.T.: -0.009 min
 Response: 6627049
 Conc: 175.15 ng/ml



#12 AR-1232-2

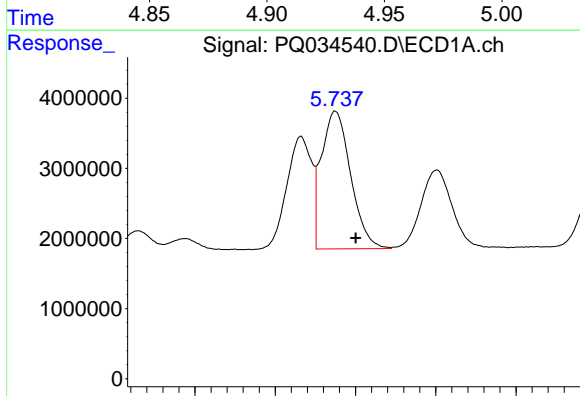
R.T.: 5.448 min
 Delta R.T.: -0.012 min
 Response: 13110962
 Conc: 466.76 ng/ml

Instrument :
 ECD_Q
 ClientSampled :



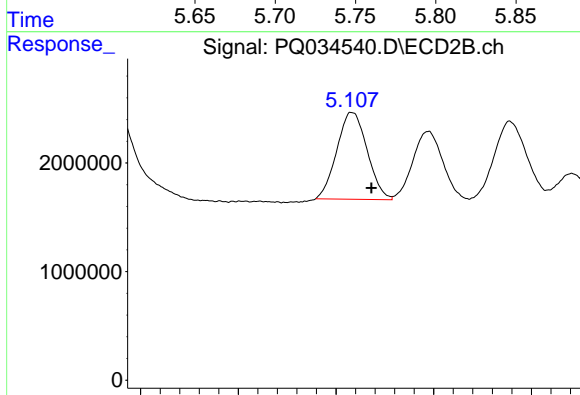
#12 AR-1232-2

R.T.: 4.931 min
 Delta R.T.: -0.010 min
 Response: 16015357
 Conc: 402.96 ng/ml



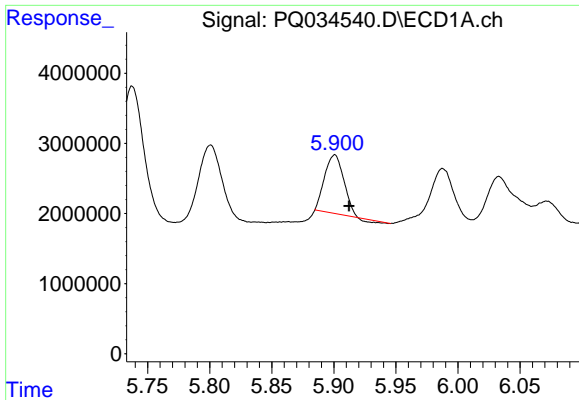
#13 AR-1232-3

R.T.: 5.738 min
 Delta R.T.: -0.013 min
 Response: 24957748
 Conc: 439.18 ng/ml



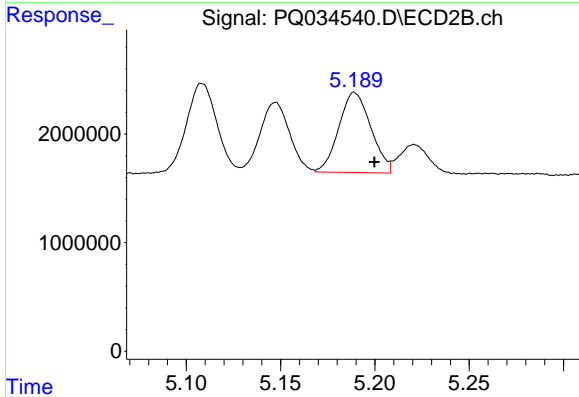
#13 AR-1232-3

R.T.: 5.108 min
 Delta R.T.: -0.010 min
 Response: 8641418
 Conc: 420.02 ng/ml

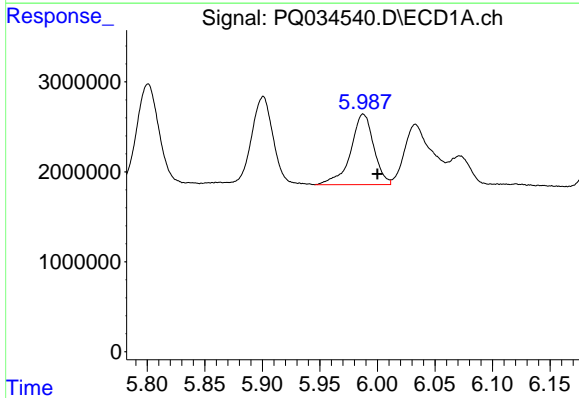


#14 AR-1232-4
 R.T.: 5.901 min
 Delta R.T.: -0.012 min
 Response: 8710983
 Conc: 311.95 ng/ml

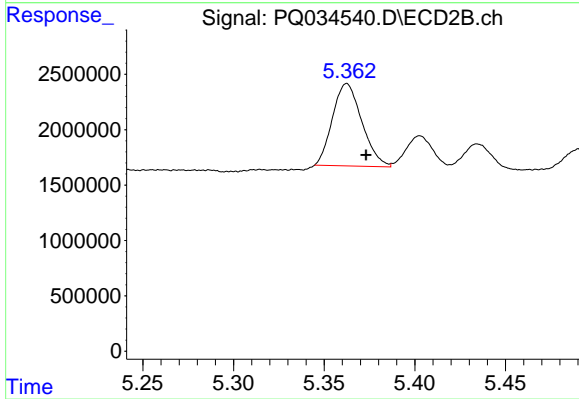
Instrument :
 ECD_Q
 ClientSampled :



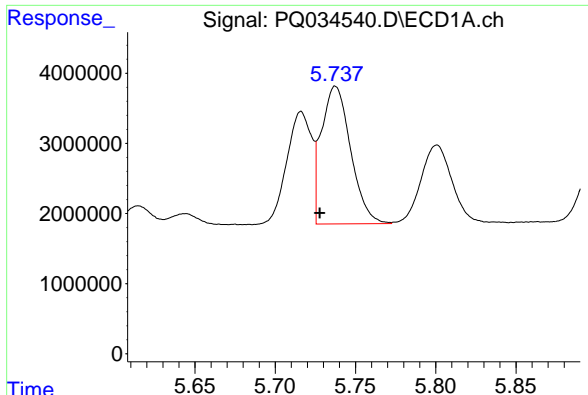
#14 AR-1232-4
 R.T.: 5.189 min
 Delta R.T.: -0.011 min
 Response: 8739748
 Conc: 471.64 ng/ml



#15 AR-1232-5
 R.T.: 5.988 min
 Delta R.T.: -0.012 min
 Response: 10947371
 Conc: 545.44 ng/ml

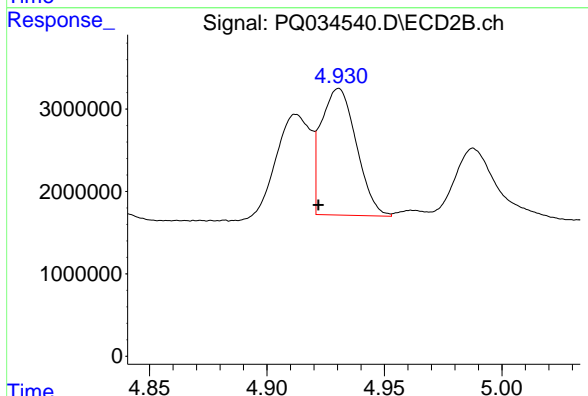


#15 AR-1232-5
 R.T.: 5.362 min
 Delta R.T.: -0.011 min
 Response: 8391644
 Conc: 415.25 ng/ml

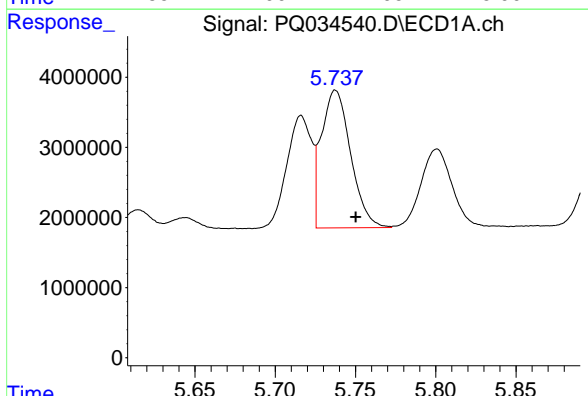


#16 AR-1242-1
 R.T.: 5.738 min
 Delta R.T.: 0.010 min
 Response: 24957748
 Conc: 317.55 ng/ml

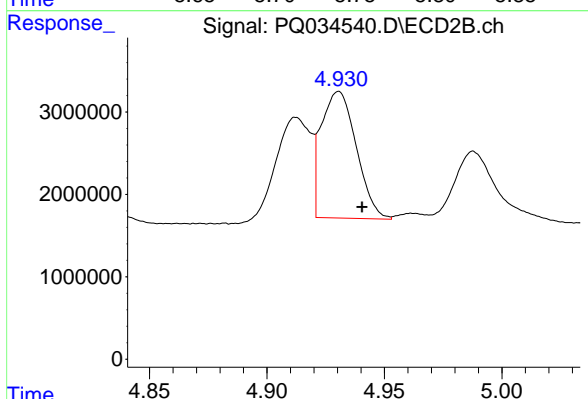
Instrument :
 ECD_Q
 ClientSampled :



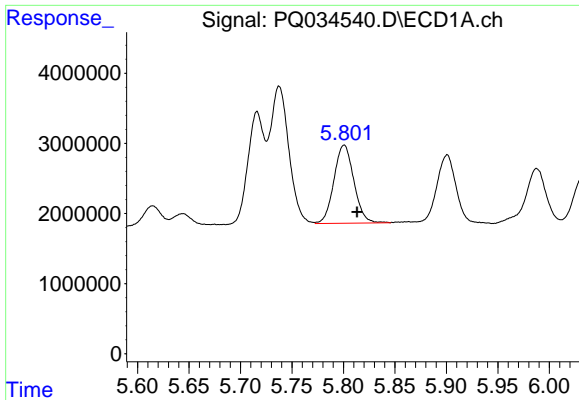
#16 AR-1242-1
 R.T.: 4.931 min
 Delta R.T.: 0.009 min
 Response: 16015357
 Conc: 289.78 ng/ml



#17 AR-1242-2
 R.T.: 5.738 min
 Delta R.T.: -0.013 min
 Response: 24957748
 Conc: 213.48 ng/ml

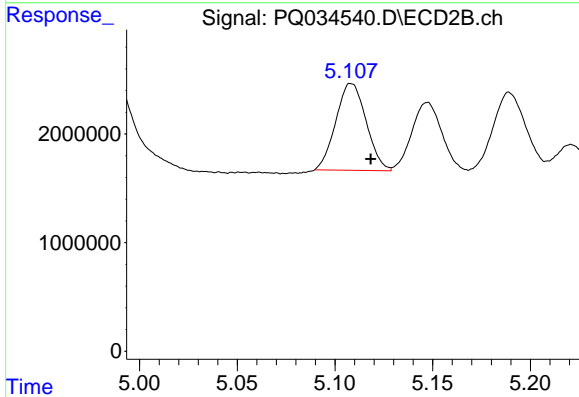


#17 AR-1242-2
 R.T.: 4.931 min
 Delta R.T.: -0.010 min
 Response: 16015357
 Conc: 200.30 ng/ml

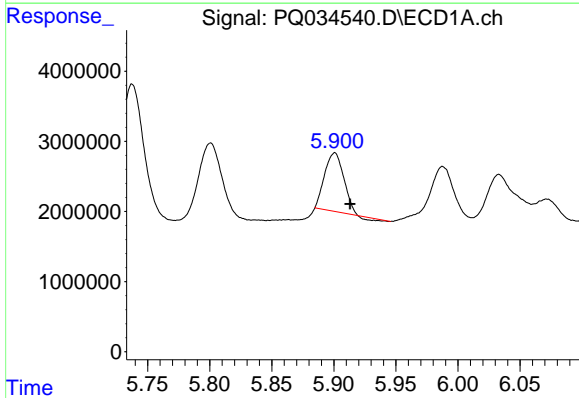


#18 AR-1242-3
 R.T.: 5.801 min
 Delta R.T.: -0.012 min
 Response: 15019429
 Conc: 212.33 ng/ml

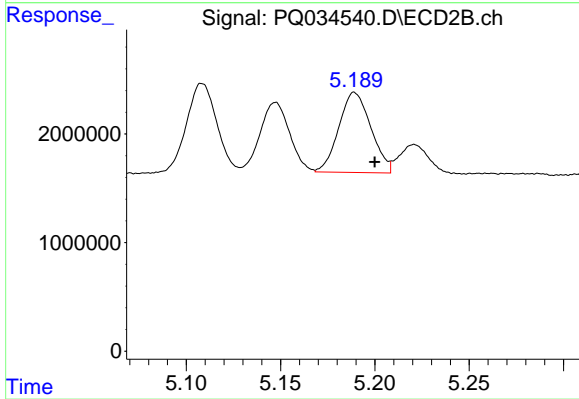
Instrument :
 ECD_Q
 ClientSampleId :



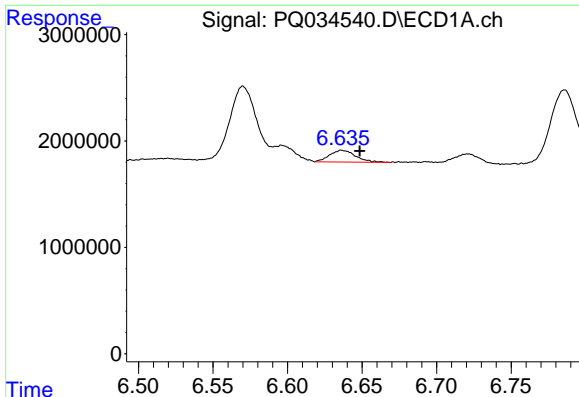
#18 AR-1242-3
 R.T.: 5.108 min
 Delta R.T.: -0.010 min
 Response: 8641418
 Conc: 209.33 ng/ml



#19 AR-1242-4
 R.T.: 5.901 min
 Delta R.T.: -0.012 min
 Response: 8710983
 Conc: 151.74 ng/ml



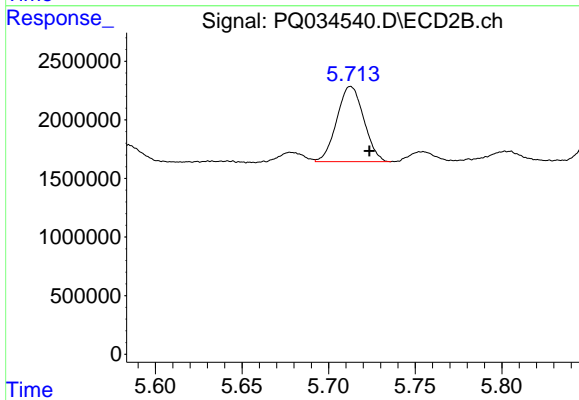
#19 AR-1242-4
 R.T.: 5.189 min
 Delta R.T.: -0.011 min
 Response: 8739748
 Conc: 217.17 ng/ml



#20 AR-1242-5

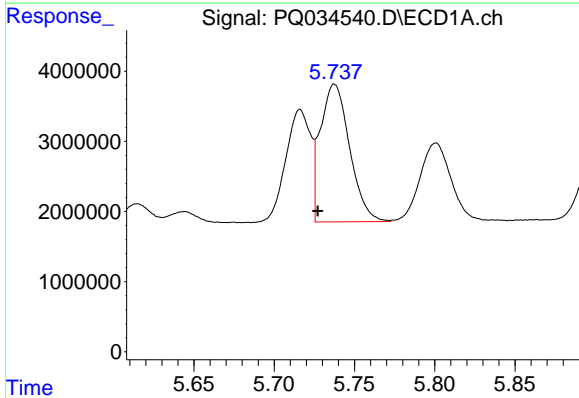
R.T.: 6.636 min
 Delta R.T.: -0.012 min
 Response: 1345383
 Conc: 20.82 ng/ml

Instrument :
 ECD_Q
 ClientSampled :



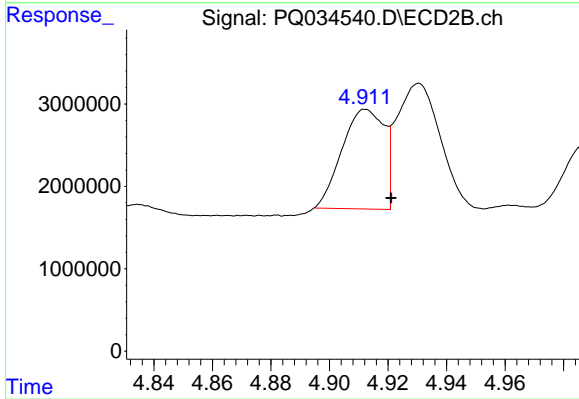
#20 AR-1242-5

R.T.: 5.713 min
 Delta R.T.: -0.011 min
 Response: 6969293
 Conc: 133.48 ng/ml



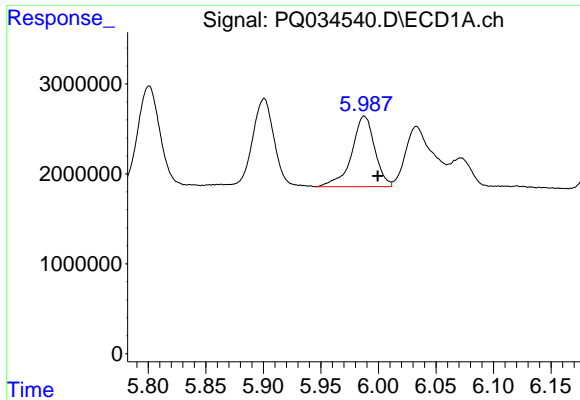
#21 AR-1248-1

R.T.: 5.738 min
 Delta R.T.: 0.010 min
 Response: 24957748
 Conc: 384.48 ng/ml



#21 AR-1248-1

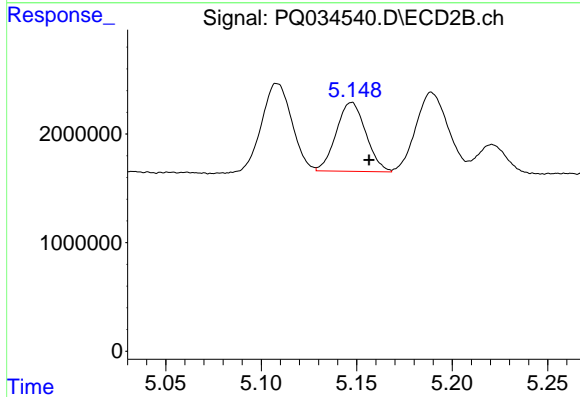
R.T.: 4.912 min
 Delta R.T.: -0.009 min
 Response: 12082928
 Conc: 260.60 ng/ml



#22 AR-1248-2

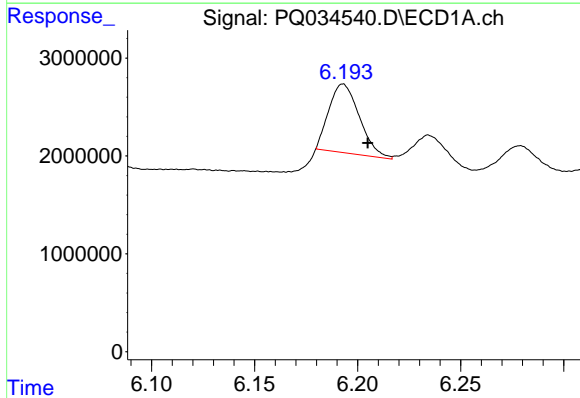
R.T.: 5.988 min
 Delta R.T.: -0.012 min
 Response: 10947371
 Conc: 117.43 ng/ml

Instrument :
 ECD_Q
 ClientSampled :



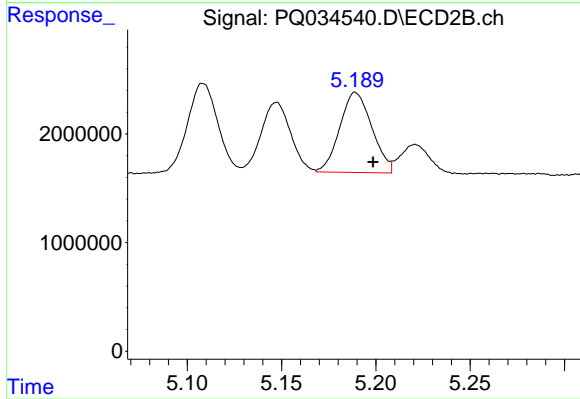
#22 AR-1248-2

R.T.: 5.147 min
 Delta R.T.: -0.009 min
 Response: 6861059
 Conc: 109.36 ng/ml



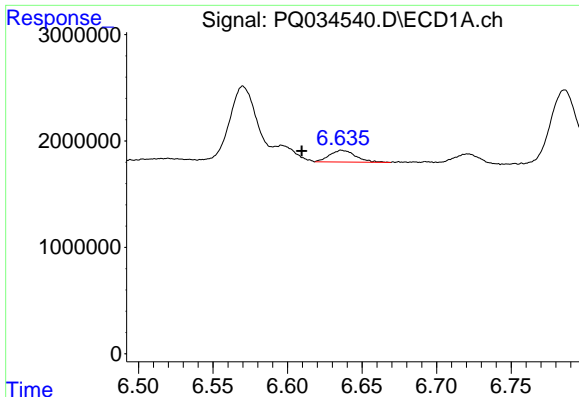
#23 AR-1248-3

R.T.: 6.193 min
 Delta R.T.: -0.012 min
 Response: 7226348
 Conc: 67.70 ng/ml



#23 AR-1248-3

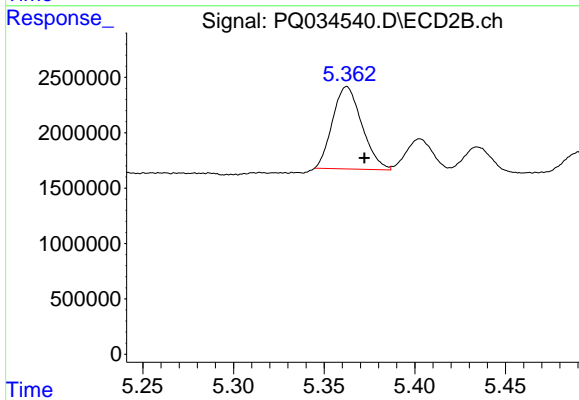
R.T.: 5.189 min
 Delta R.T.: -0.009 min
 Response: 8739748
 Conc: 135.11 ng/ml



#24 AR-1248-4

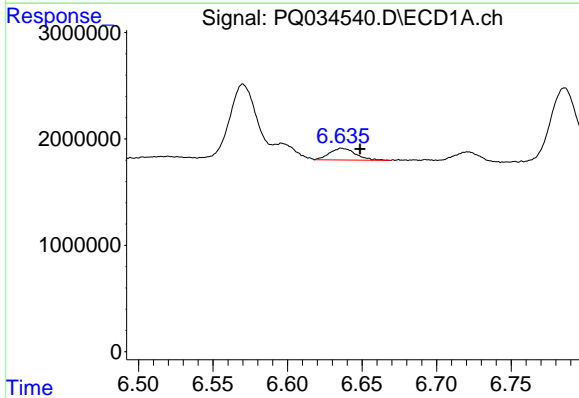
R.T.: 6.636 min
 Delta R.T.: 0.027 min
 Response: 1345383
 Conc: 11.07 ng/ml

Instrument :
 ECD_Q
 ClientSampleId :



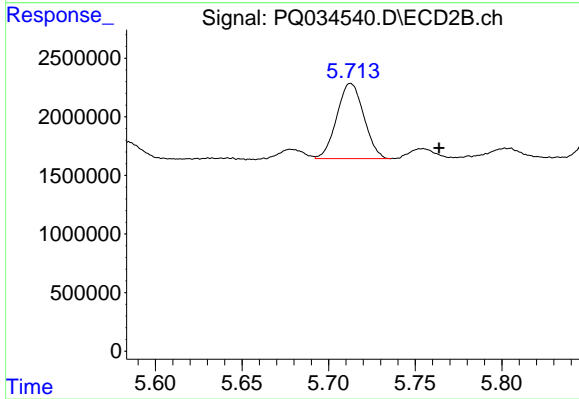
#24 AR-1248-4

R.T.: 5.362 min
 Delta R.T.: -0.010 min
 Response: 8391644
 Conc: 105.31 ng/ml



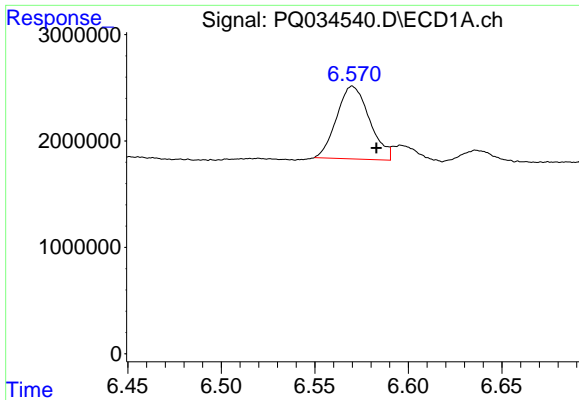
#25 AR-1248-5

R.T.: 6.636 min
 Delta R.T.: -0.012 min
 Response: 1345383
 Conc: 11.51 ng/ml



#25 AR-1248-5

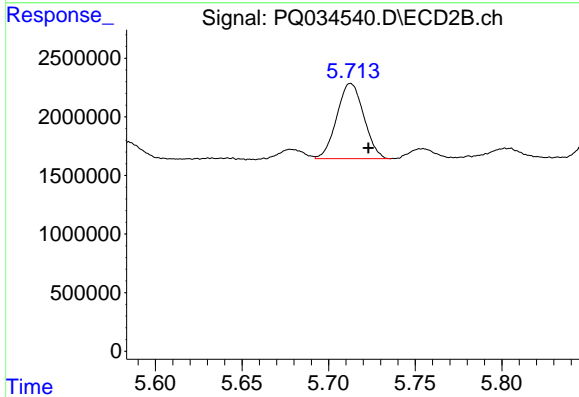
R.T.: 5.713 min
 Delta R.T.: -0.051 min
 Response: 6969293
 Conc: 86.64 ng/ml



#26 AR-1254-1

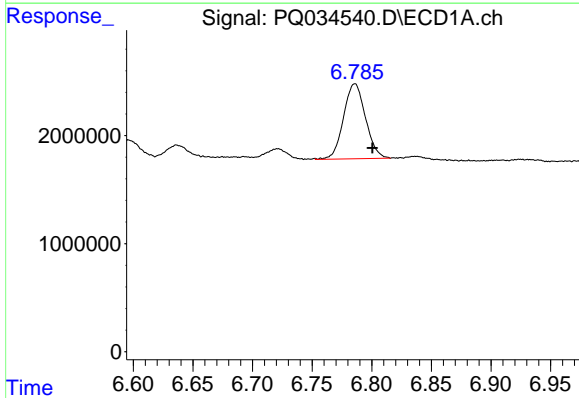
R.T.: 6.570 min
 Delta R.T.: -0.013 min
 Response: 8350405
 Conc: 73.88 ng/ml

Instrument :
 ECD_Q
 ClientSampled :



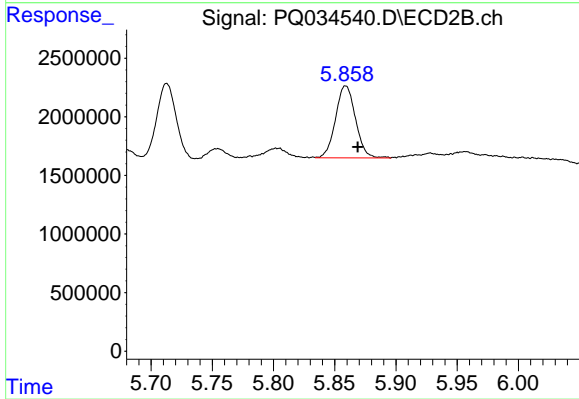
#26 AR-1254-1

R.T.: 5.713 min
 Delta R.T.: -0.010 min
 Response: 6969293
 Conc: 60.28 ng/ml



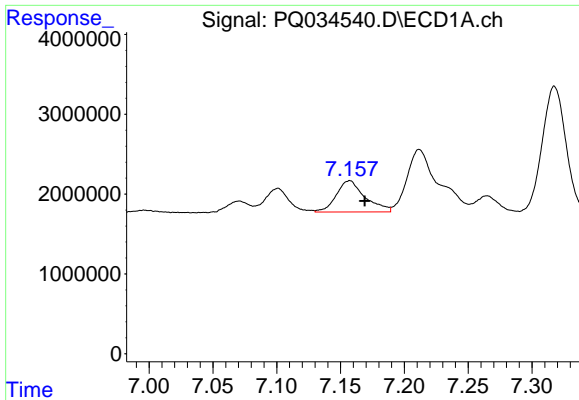
#27 AR-1254-2

R.T.: 6.786 min
 Delta R.T.: -0.015 min
 Response: 8909909
 Conc: 49.68 ng/ml



#27 AR-1254-2

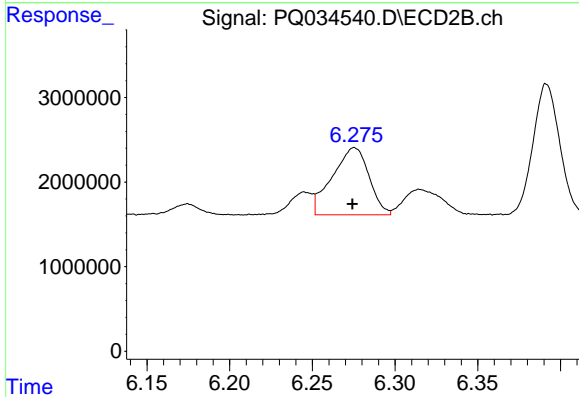
R.T.: 5.859 min
 Delta R.T.: -0.010 min
 Response: 6975765
 Conc: 69.72 ng/ml



#28 AR-1254-3

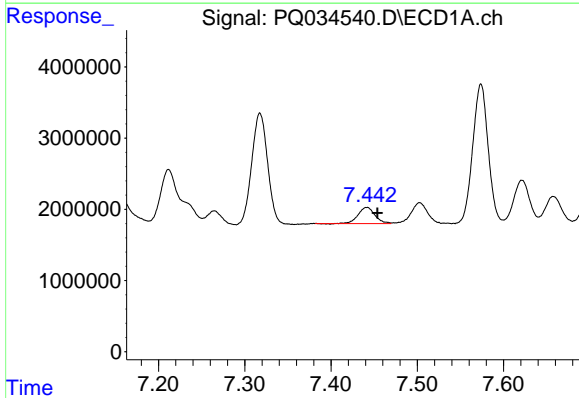
R.T.: 7.157 min
 Delta R.T.: -0.012 min
 Response: 6173925
 Conc: 31.76 ng/ml

Instrument :
 ECD_Q
 ClientSampleId :



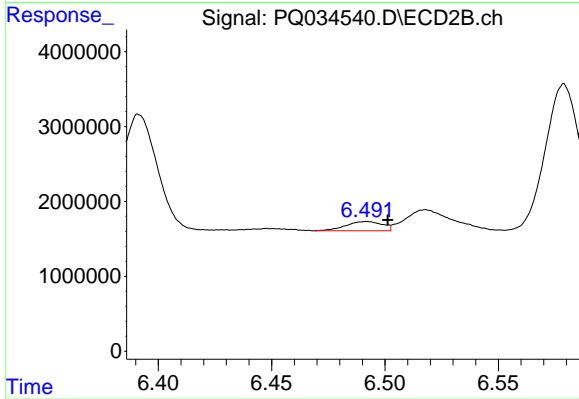
#28 AR-1254-3

R.T.: 6.275 min
 Delta R.T.: 0.001 min
 Response: 12270289
 Conc: 71.01 ng/ml



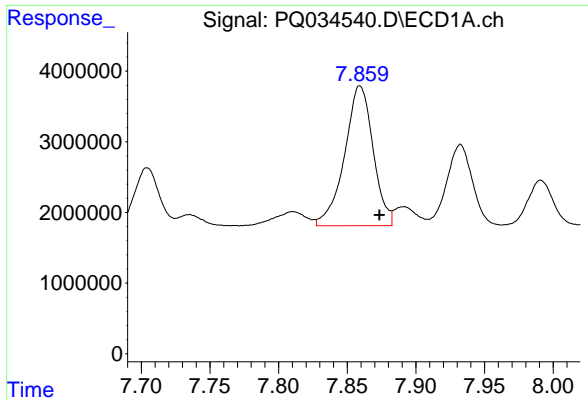
#29 AR-1254-4

R.T.: 7.442 min
 Delta R.T.: -0.012 min
 Response: 3109451
 Conc: 21.73 ng/ml



#29 AR-1254-4

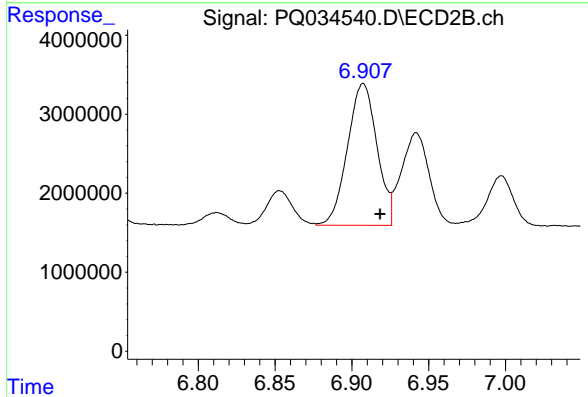
R.T.: 6.492 min
 Delta R.T.: -0.009 min
 Response: 1376641
 Conc: 12.63 ng/ml



#30 AR-1254-5

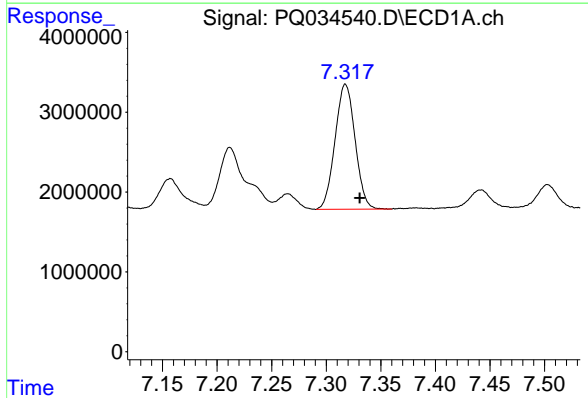
R.T.: 7.859 min
 Delta R.T.: -0.014 min
 Response: 28681900
 Conc: 182.17 ng/ml

Instrument :
 ECD_Q
 ClientSampleId :



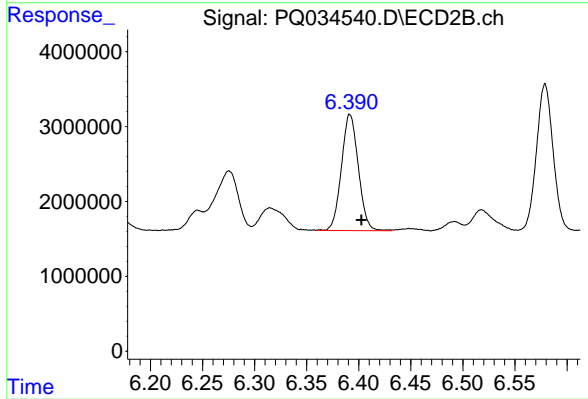
#30 AR-1254-5

R.T.: 6.907 min
 Delta R.T.: -0.011 min
 Response: 23967817
 Conc: 157.95 ng/ml



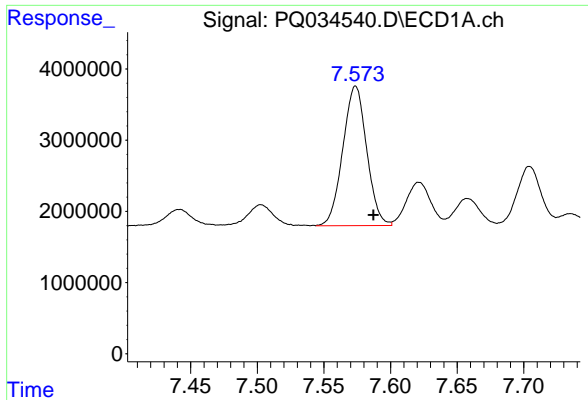
#31 AR-1260-1

R.T.: 7.318 min
 Delta R.T.: -0.013 min
 Response: 20036975
 Conc: 145.32 ng/ml



#31 AR-1260-1

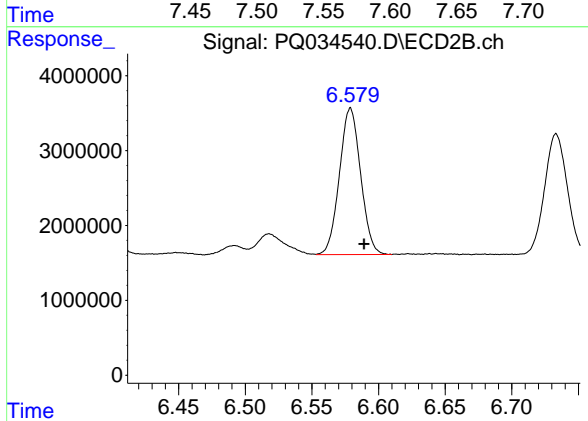
R.T.: 6.392 min
 Delta R.T.: -0.011 min
 Response: 17526272
 Conc: 152.28 ng/ml



#32 AR-1260-2

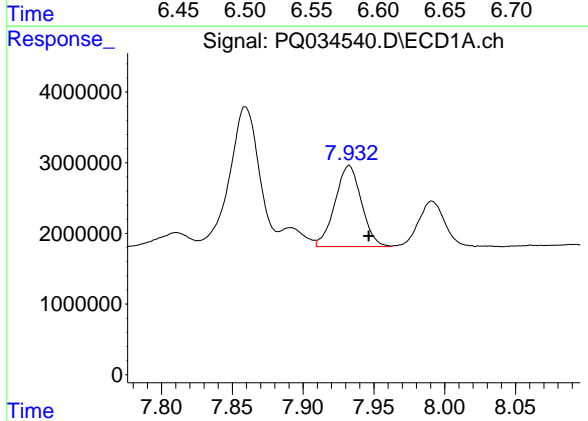
R.T.: 7.574 min
 Delta R.T.: -0.013 min
 Response: 24437833
 Conc: 141.98 ng/ml

Instrument :
 ECD_Q
 ClientSampled :



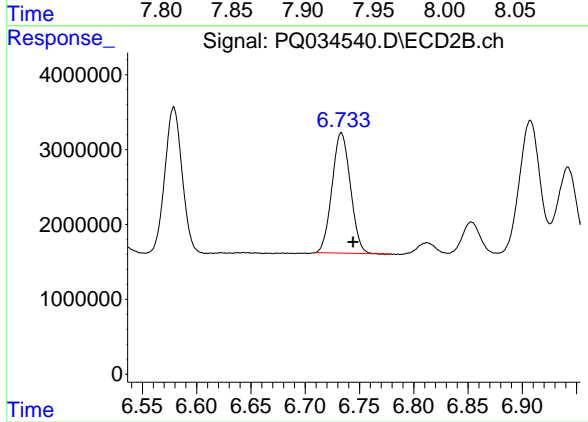
#32 AR-1260-2

R.T.: 6.579 min
 Delta R.T.: -0.010 min
 Response: 21659365
 Conc: 152.55 ng/ml



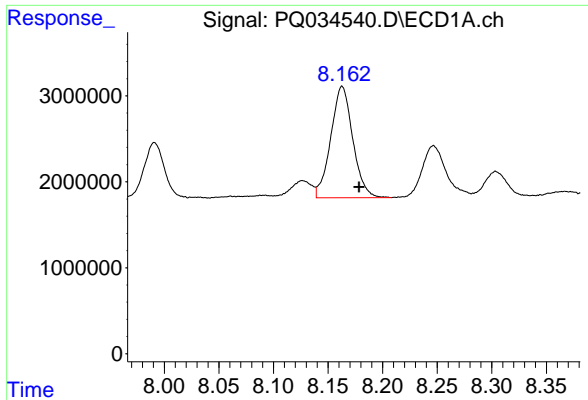
#33 AR-1260-3

R.T.: 7.932 min
 Delta R.T.: -0.014 min
 Response: 14955095
 Conc: 146.82 ng/ml



#33 AR-1260-3

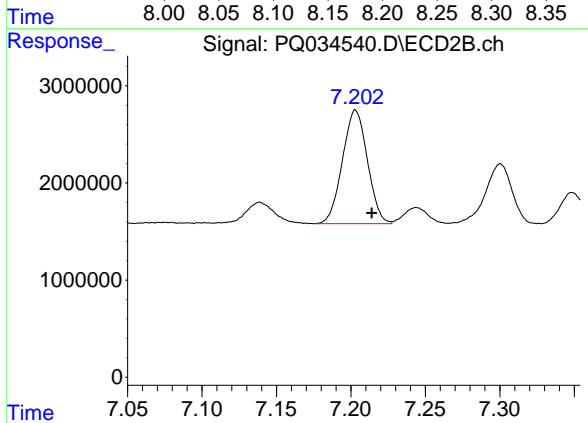
R.T.: 6.733 min
 Delta R.T.: -0.011 min
 Response: 18884181
 Conc: 143.34 ng/ml



#34 AR-1260-4

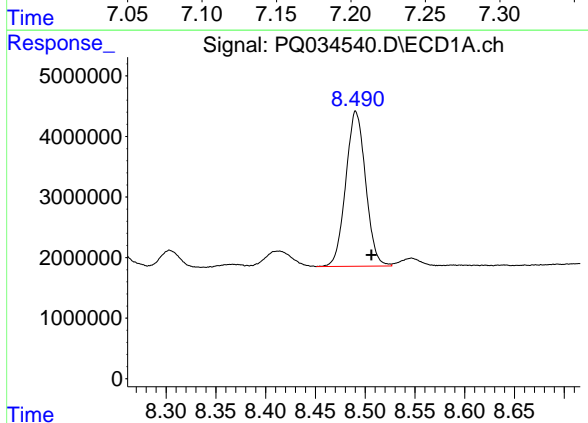
R.T.: 8.163 min
 Delta R.T.: -0.015 min
 Response: 18191617
 Conc: 140.03 ng/ml

Instrument :
 ECD_Q
 ClientSampleId :



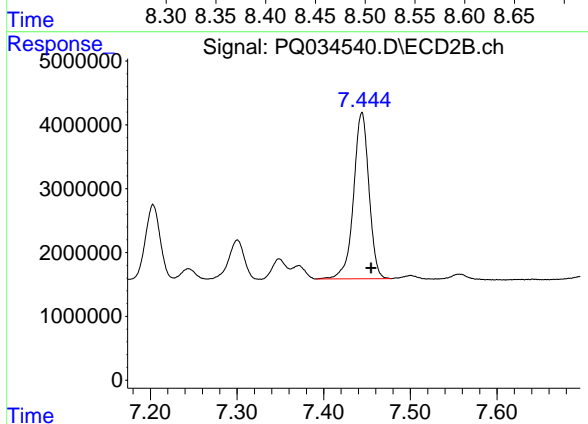
#34 AR-1260-4

R.T.: 7.203 min
 Delta R.T.: -0.011 min
 Response: 13662969
 Conc: 150.57 ng/ml



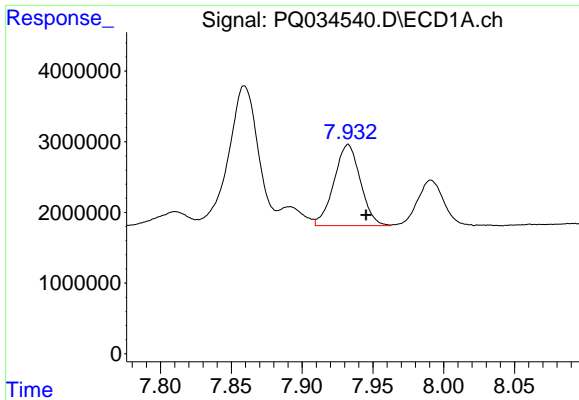
#35 AR-1260-5

R.T.: 8.491 min
 Delta R.T.: -0.016 min
 Response: 35483582
 Conc: 142.28 ng/ml



#35 AR-1260-5

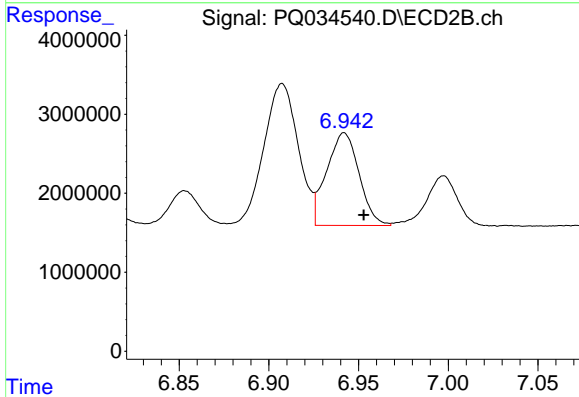
R.T.: 7.444 min
 Delta R.T.: -0.011 min
 Response: 32152611
 Conc: 138.35 ng/ml



#36 AR-1262-1

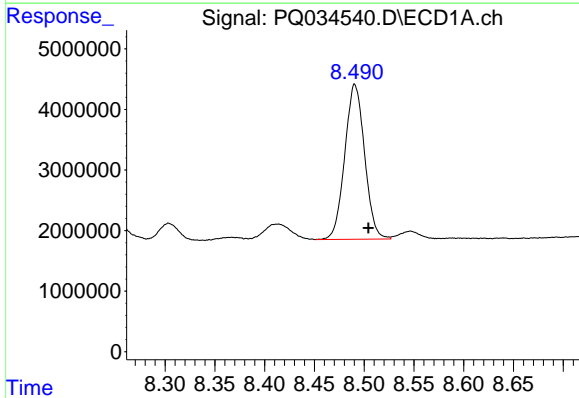
R.T.: 7.932 min
Delta R.T.: -0.013 min
Response: 14955095
Conc: 81.19 ng/ml

Instrument :
ECD_Q
ClientSampleId :



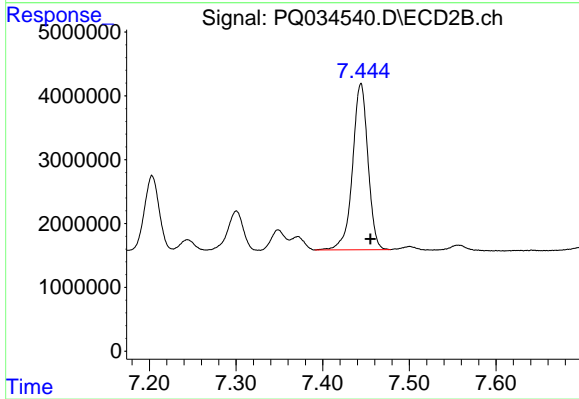
#36 AR-1262-1

R.T.: 6.942 min
Delta R.T.: -0.011 min
Response: 14769719
Conc: 98.36 ng/ml



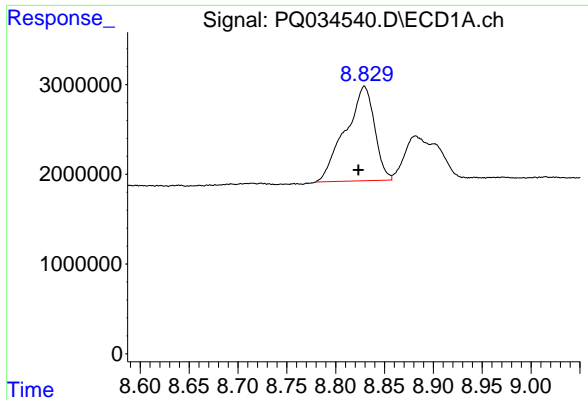
#37 AR-1262-2

R.T.: 8.491 min
Delta R.T.: -0.014 min
Response: 35483582
Conc: 104.32 ng/ml



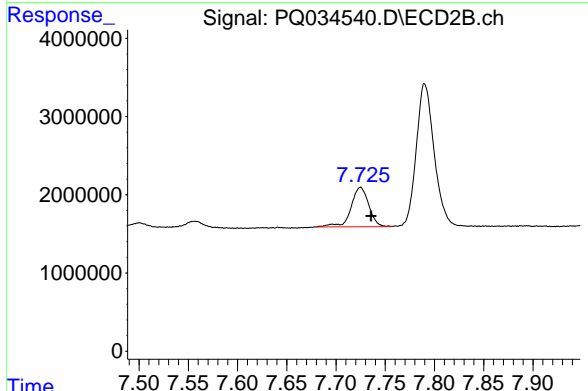
#37 AR-1262-2

R.T.: 7.444 min
Delta R.T.: -0.011 min
Response: 32152611
Conc: 111.58 ng/ml

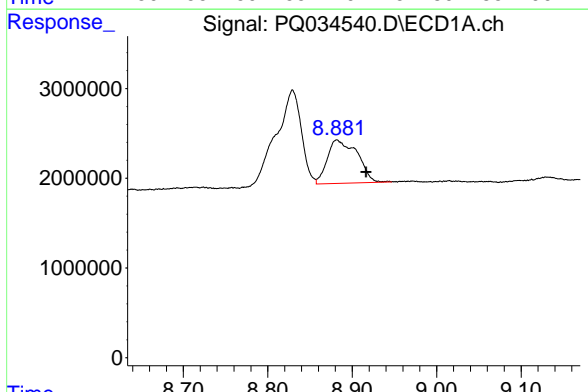


#38 AR-1262-3
 R.T.: 8.829 min
 Delta R.T.: 0.006 min
 Response: 21844684
 Conc: 98.35 ng/ml

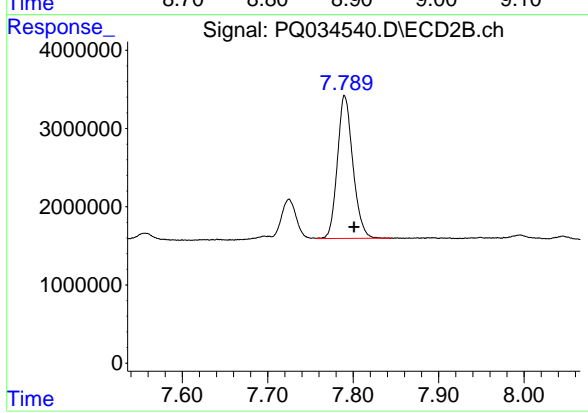
Instrument :
 ECD_Q
 ClientSampled :



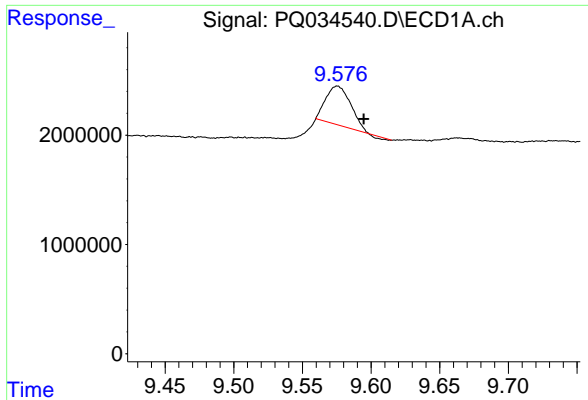
#38 AR-1262-3
 R.T.: 7.725 min
 Delta R.T.: -0.011 min
 Response: 6313896
 Conc: 59.11 ng/ml



#39 AR-1262-4
 R.T.: 8.882 min
 Delta R.T.: -0.035 min
 Response: 11917740
 Conc: 141.38 ng/ml



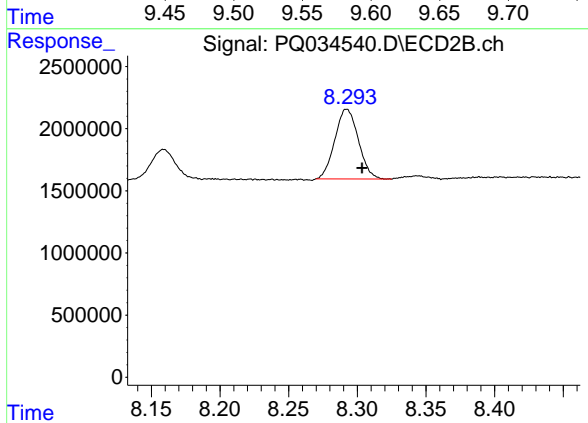
#39 AR-1262-4
 R.T.: 7.790 min
 Delta R.T.: -0.011 min
 Response: 22931665
 Conc: 111.99 ng/ml



#40 AR-1262-5

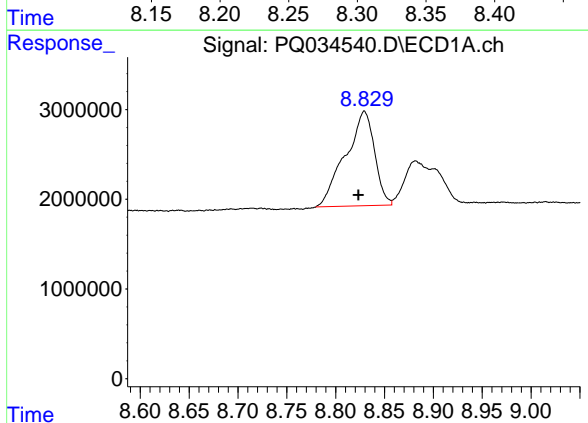
R.T.: 9.575 min
 Delta R.T.: -0.019 min
 Response: 4421332
 Conc: 38.88 ng/ml

Instrument :
 ECD_Q
 ClientSampleId :



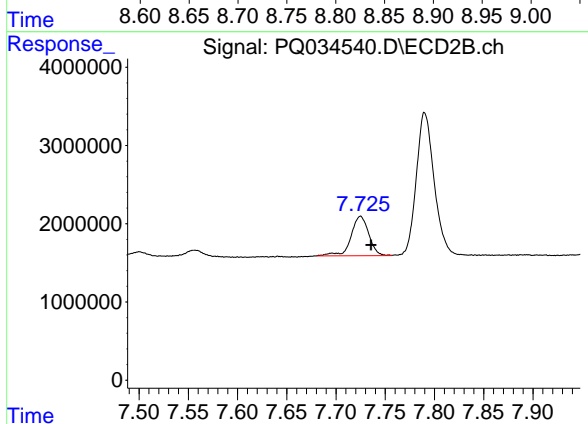
#40 AR-1262-5

R.T.: 8.292 min
 Delta R.T.: -0.011 min
 Response: 6704754
 Conc: 73.55 ng/ml



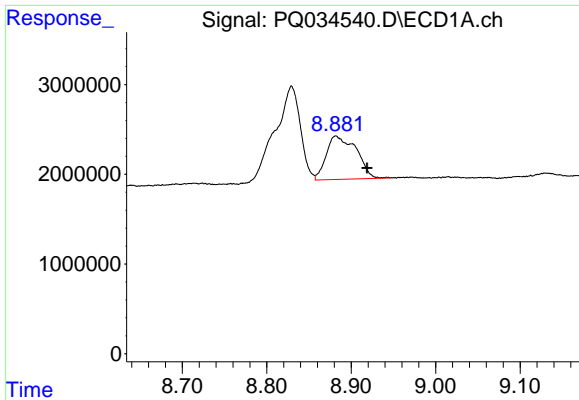
#41 AR-1268-1

R.T.: 8.829 min
 Delta R.T.: 0.006 min
 Response: 21844684
 Conc: 49.57 ng/ml



#41 AR-1268-1

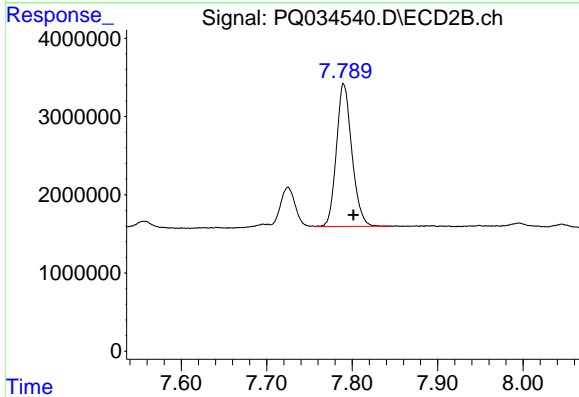
R.T.: 7.725 min
 Delta R.T.: -0.011 min
 Response: 6313896
 Conc: 17.74 ng/ml



#42 AR-1268-2

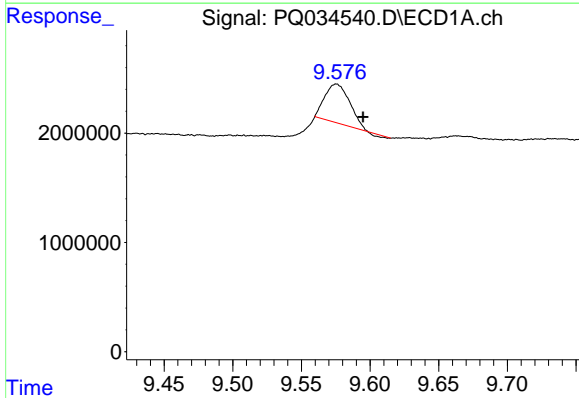
R.T.: 8.882 min
 Delta R.T.: -0.037 min
 Response: 11917740
 Conc: 30.01 ng/ml

Instrument :
 ECD_Q
 ClientSampleId :



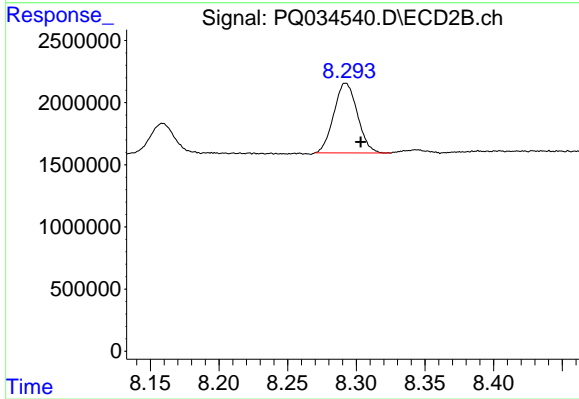
#42 AR-1268-2

R.T.: 7.790 min
 Delta R.T.: -0.011 min
 Response: 22931665
 Conc: 71.77 ng/ml



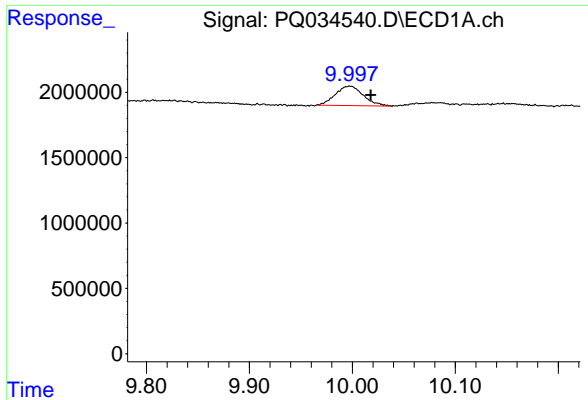
#44 AR-1268-4

R.T.: 9.575 min
 Delta R.T.: -0.019 min
 Response: 4421332
 Conc: 32.29 ng/ml



#44 AR-1268-4

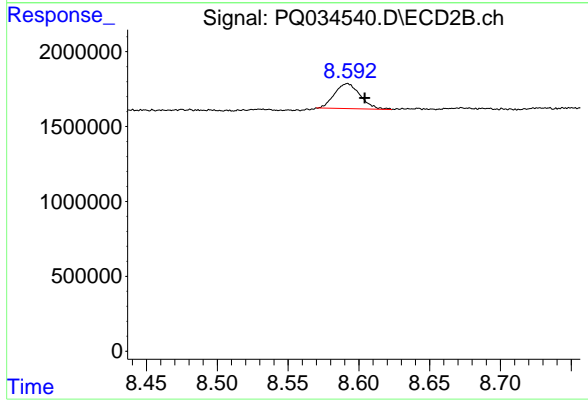
R.T.: 8.292 min
 Delta R.T.: -0.011 min
 Response: 6704754
 Conc: 60.31 ng/ml



#45 AR-1268-5

R.T.: 9.998 min
Delta R.T.: -0.020 min
Response: 2822432
Conc: 2.48 ng/ml

Instrument :
ECD_Q
ClientSampleId :



#45 AR-1268-5

R.T.: 8.592 min
Delta R.T.: -0.012 min
Response: 2097312
Conc: 2.42 ng/ml