

Data Path : Z:\pestpcbsrv\HPCHEM1\ECD_Q\Data\PQ111418\
 Data File : PQ034546.D
 Signal(s) : Signal #1: ECD1A.ch Signal #2: ECD2B.ch
 Acq On : 13 Nov 2018 23:25
 Operator : SM\SJ
 Sample : I.BLK
 Misc :
 ALS Vial : 2 Sample Multiplier: 1

Instrument :
 ECD_Q
 ClientSampleId :

Integration File signal 1: autoint1.e
 Integration File signal 2: autoint2.e
 Quant Time: Nov 14 06:14:55 2018
 Quant Method : Z:\pestpcbsrv\HPCHEM1\ECD_Q\Method\PQ110618.M
 Quant Title : GC EXTRACTABLES
 QLast Update : Fri Nov 09 08:12:53 2018
 Response via : Initial Calibration
 Integrator: ChemStation

Volume Inj. : 2 µl
 Signal #1 Phase : ZB-MR1 Signal #2 Phase: ZB-MR2
 Signal #1 Info : 30Mx0.32mmx 0.50µ Signal #2 Info : 30M x 0.32mm x 0.25µm

Compound	RT#1	RT#2	Resp#1	Resp#2	ng/ml	ng/ml

System Monitoring Compounds						
1) SA Tetrachlo...	4.543	3.824	77051189	52012344	26.286	27.250
2) SA Decachlor...	10.335	8.850	53949105	39657139	21.016	20.180

Target Compounds

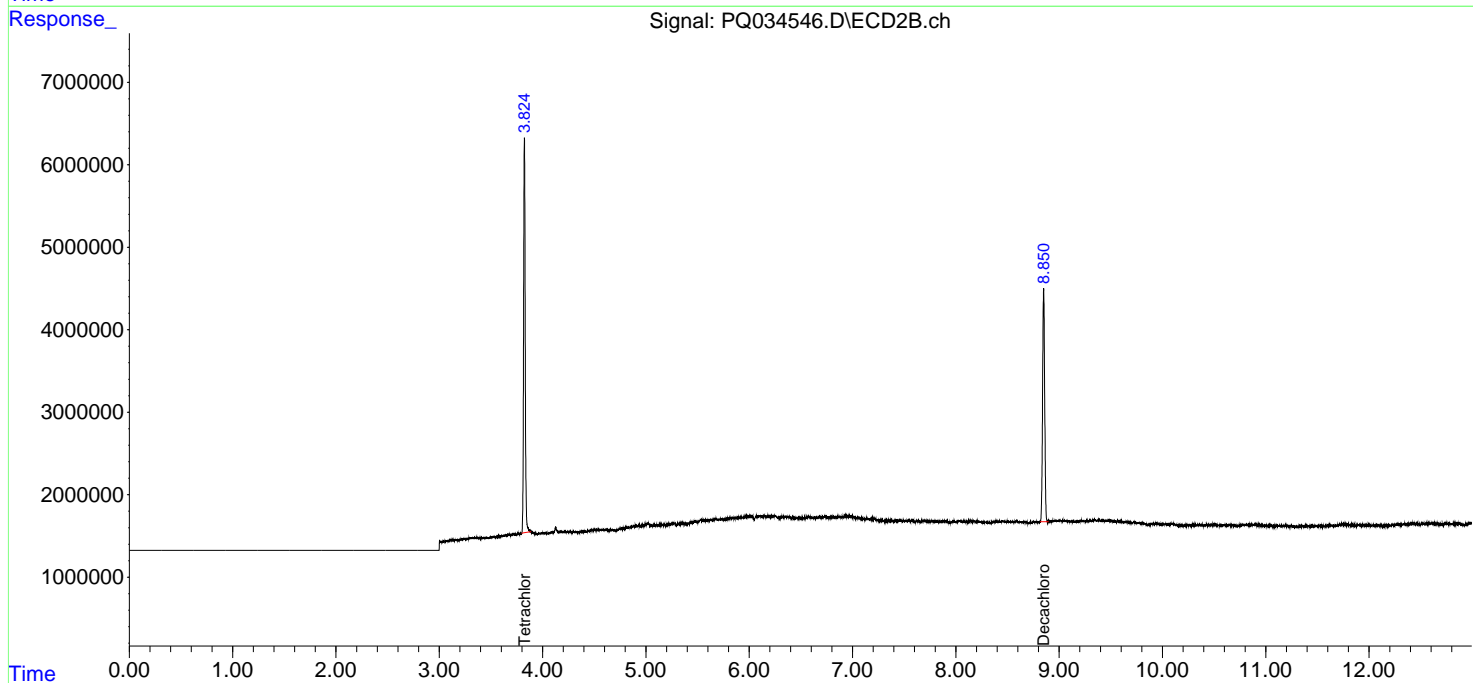
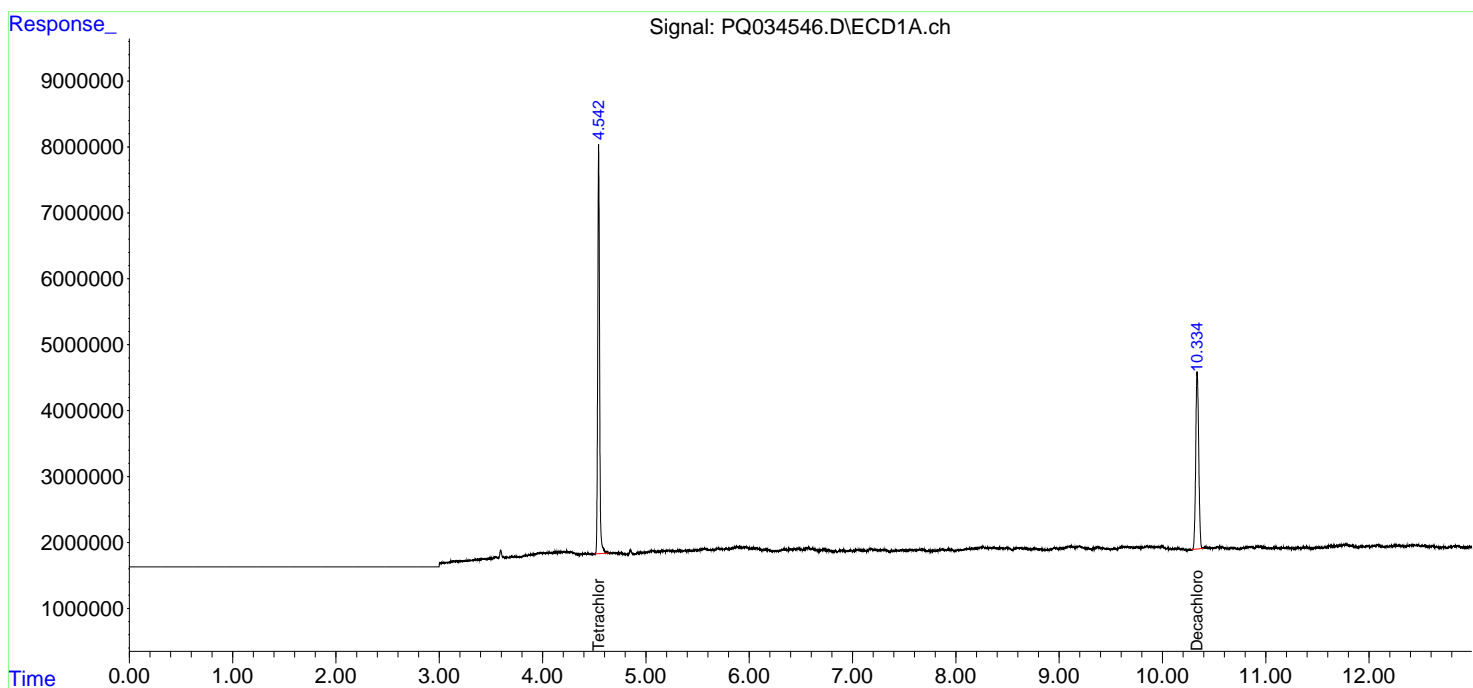
(f)=RT Delta > 1/2 Window (#)=Amounts differ by > 25% (m)=manual int.

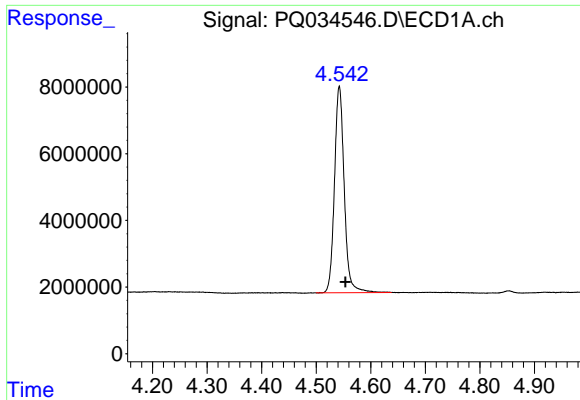
Data Path : Z:\pestpcbsrv\HPCHEM1\ECD_Q\Data\PQ111418\
 Data File : PQ034546.D
 Signal(s) : Signal #1: ECD1A.ch Signal #2: ECD2B.ch
 Acq On : 13 Nov 2018 23:25
 Operator : SM\SJ
 Sample : I.BLK
 Misc :
 ALS Vial : 2 Sample Multiplier: 1

Instrument :
 ECD_Q
 ClientSampled :

Integration File signal 1: autoint1.e
 Integration File signal 2: autoint2.e
 Quant Time: Nov 14 06:14:55 2018
 Quant Method : Z:\pestpcbsrv\HPCHEM1\ECD_Q\Method\PQ110618.M
 Quant Title : GC EXTRACTABLES
 QLast Update : Fri Nov 09 08:12:53 2018
 Response via : Initial Calibration
 Integrator: ChemStation

Volume Inj. : 2 µl
 Signal #1 Phase : ZB-MR1 Signal #2 Phase: ZB-MR2
 Signal #1 Info : 30Mx0.32mmx 0.50µ Signal #2 Info : 30M x 0.32mm x 0.25µm

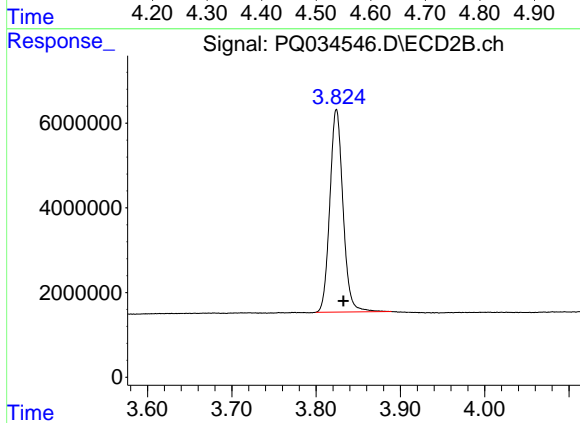




#1 Tetrachloro-m-xylene

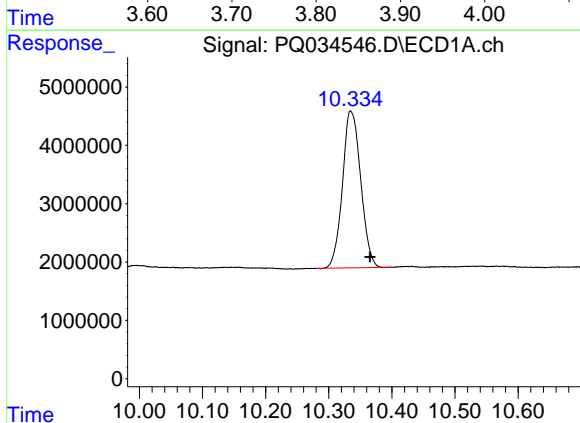
R.T.: 4.543 min
 Delta R.T.: -0.011 min
 Response: 77051189
 Conc: 26.29 ng/ml

Instrument :
 ECD_Q
 ClientSampled :



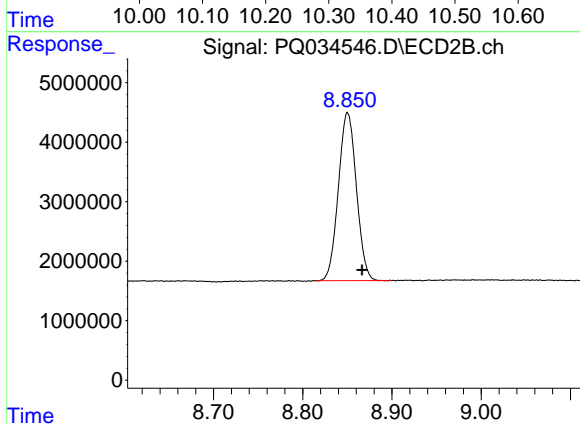
#1 Tetrachloro-m-xylene

R.T.: 3.824 min
 Delta R.T.: -0.008 min
 Response: 52012344
 Conc: 27.25 ng/ml



#2 Decachlorobiphenyl

R.T.: 10.335 min
 Delta R.T.: -0.031 min
 Response: 53949105
 Conc: 21.02 ng/ml



#2 Decachlorobiphenyl

R.T.: 8.850 min
 Delta R.T.: -0.016 min
 Response: 39657139
 Conc: 20.18 ng/ml