

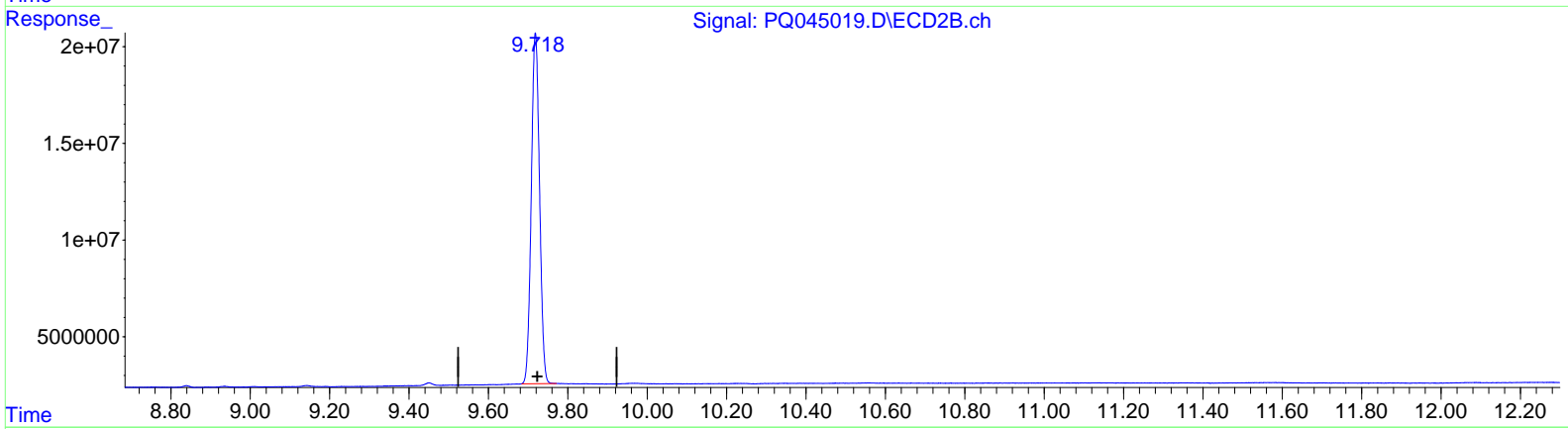
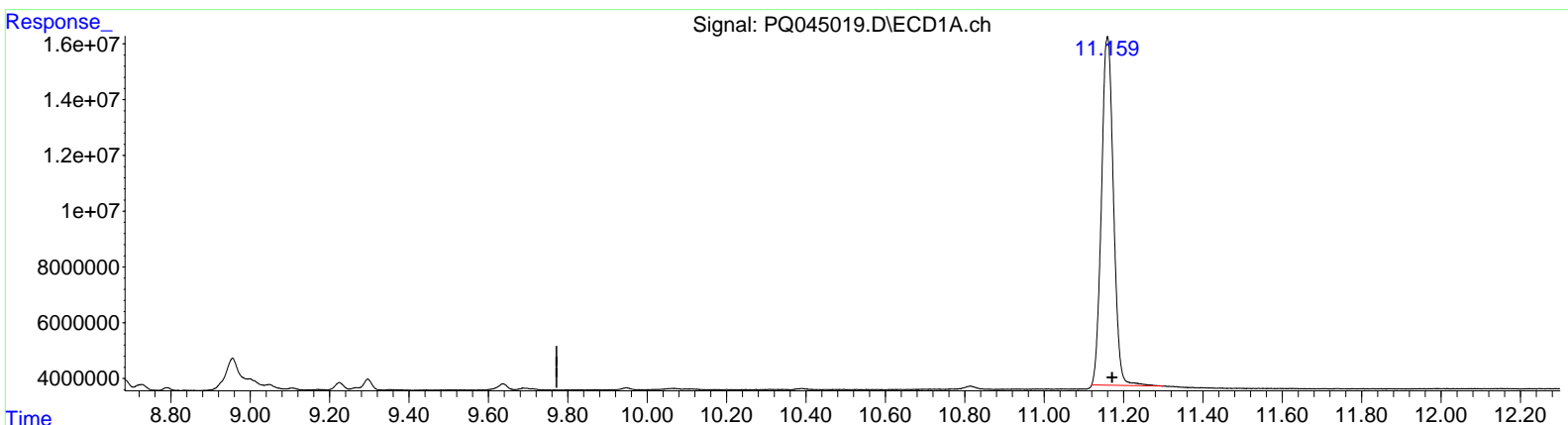
Data Path : Z:\pestpcbsrv\HPCHEM1\ECD_Q\Data\PQ111419\
 Data File : PQ045019.D
 Signal(s) : Signal #1: ECD1A.ch Signal #2: ECD2B.ch
 Acq On : 14 Nov 2019 18:14
 Operator : SM\AJ
 Sample : K5824-11
 Misc :
 ALS Vial : 32 Sample Multiplier: 1

Instrument :
 ECD_Q
ClientSampled :
 C0AT7

Manual Integrations
APPROVED
 Ankita
 11/15/2019 9:50:16 AM

Integration File signal 1: autoint1.e
 Integration File signal 2: autoint2.e
 Quant Time: Nov 15 03:36:47 2019
 Quant Method : Z:\pestpcbsrv\HPCHEM1\ECD_Q\Method\PQ110719CLP.M
 Quant Title : GC EXTRACTABLES
 QLast Update : Fri Nov 08 03:35:55 2019
 Response via : Initial Calibration
 Integrator: ChemStation

Volume Inj. : 1 µl
 Signal #1 Phase : ZB MR1 Signal #2 Phase: ZB MR2
 Signal #1 Info : 30Mx0.32mmx 0.5µm Signal #2 Info : 30M x 0.32mm x 0.25µm



QEdit

(2) Decachlorobiphenyl (SA)

11.160min 37.753 ng/ml

response 261472891

(2) Decachlorobiphenyl #2 (SA)

9.718min 38.498 ng/ml

response 261214884

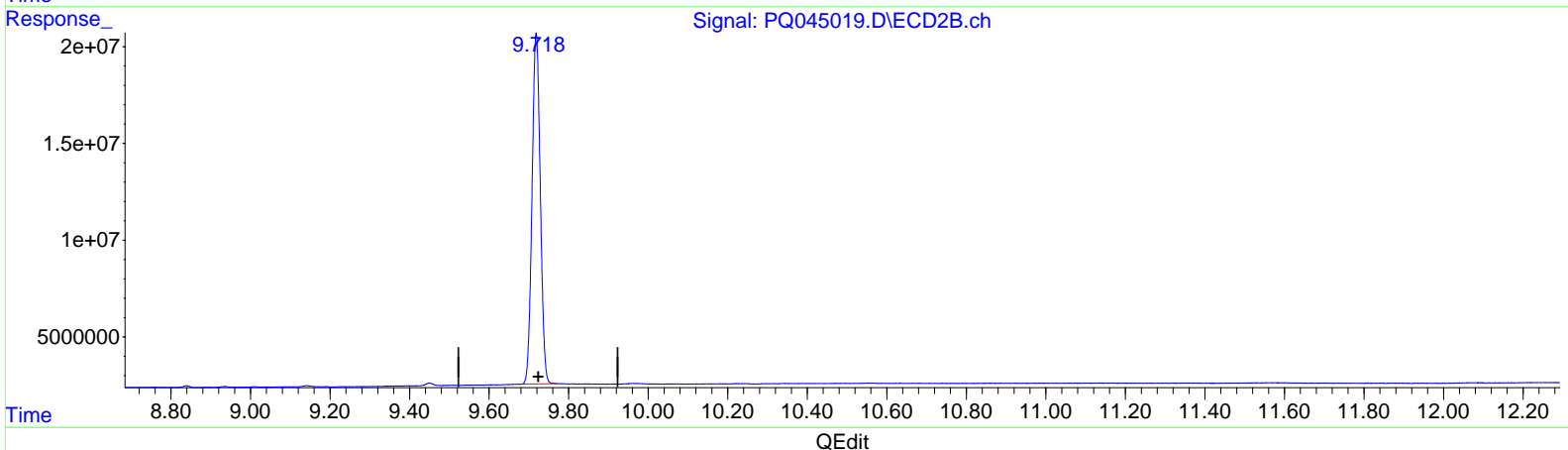
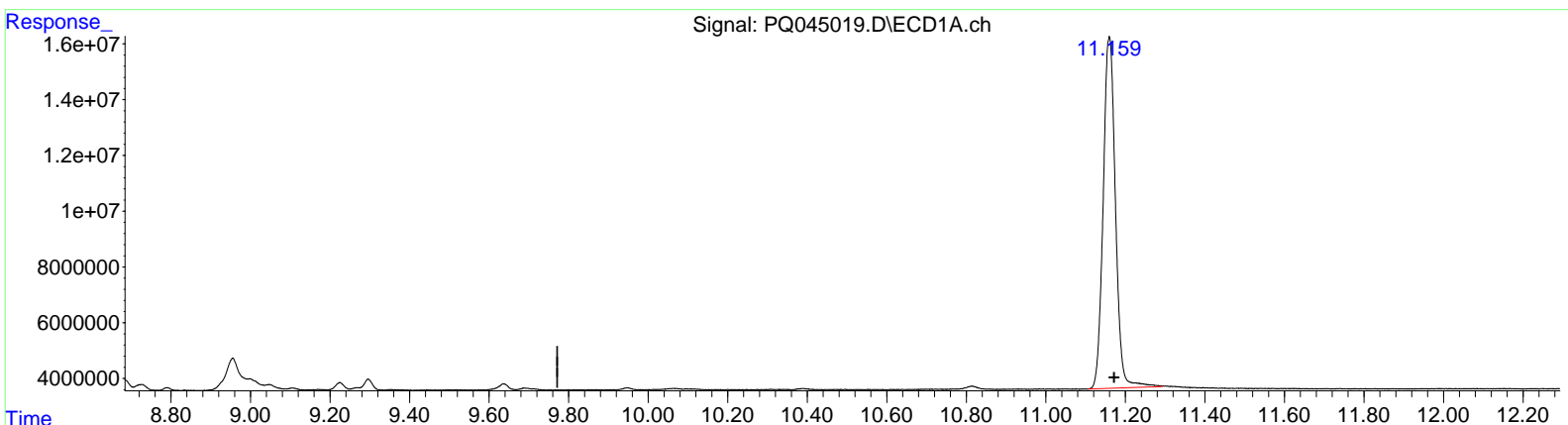
Data Path : Z:\pestpcbsrv\HPCHEM1\ECD_Q\Data\PQ111419\
 Data File : PQ045019.D
 Signal(s) : Signal #1: ECD1A.ch Signal #2: ECD2B.ch
 Acq On : 14 Nov 2019 18:14
 Operator : SM\AJ
 Sample : K5824-11
 Misc :
 ALS Vial : 32 Sample Multiplier: 1

Instrument :
 ECD_Q
ClientSampled :
 C0AT7

Manual Integrations
APPROVED
 Ankita
 11/15/2019 9:50:16 AM

Integration File signal 1: autoint1.e
 Integration File signal 2: autoint2.e
 Quant Time: Nov 15 03:36:47 2019
 Quant Method : Z:\pestpcbsrv\HPCHEM1\ECD_Q\Method\PQ110719CLP.M
 Quant Title : GC EXTRACTABLES
 QLast Update : Fri Nov 08 03:35:55 2019
 Response via : Initial Calibration
 Integrator: ChemStation

Volume Inj. : 1 µl
 Signal #1 Phase : ZB MR1 Signal #2 Phase: ZB MR2
 Signal #1 Info : 30Mx0.32mmx 0.5µm Signal #2 Info : 30M x 0.32mm x 0.25µm



(2) Decachlorobiphenyl (SA)

11.159min 39.031 ng/ml m

response 270328178

(2) Decachlorobiphenyl #2 (SA)

9.718min 38.498 ng/ml

response 261214884

Data Path : Z:\pestpcbsrv\HPCHEM1\ECD_Q\Data\PQ111419\
 Data File : PQ045019.D
 Signal(s) : Signal #1: ECD1A.ch Signal #2: ECD2B.ch
 Acq On : 14 Nov 2019 18:14
 Operator : SM\AJ
 Sample : K5824-11
 Misc :
 ALS Vial : 32 Sample Multiplier: 1

Instrument :
 ECD_Q
 Client Sampled :
 C0AT7

Integration File signal 1: autoint1.e
 Integration File signal 2: autoint2.e
 Quant Time: Nov 15 03:36:47 2019
 Quant Method : Z:\pestpcbsrv\HPCHEM1\ECD_Q\Method\PQ110719CLP.M
 Quant Title : GC EXTRACTABLES
 QLast Update : Fri Nov 08 03:35:55 2019
 Response via : Initial Calibration
 Integrator: ChemStation

Manual Integrations
 APPROVED

Ankita
 11/15/2019 9:50:16 AM

Volume Inj. : 1 µl
 Signal #1 Phase : ZB MR1 Signal #2 Phase: ZB MR2
 Signal #1 Info : 30Mx0.32mmx 0.5µm Signal #2 Info : 30M x 0.32mm x 0.25µm

Compound	RT#1	RT#2	Resp#1	Resp#2	ng/ml	ng/ml

System Monitoring Compounds						
1) SA Tetrachlo...	5.100	4.308	152.9E6	97444390	19.266	20.666
2) SA Decachlor...	11.159	9.718	270.3E6	261.2E6	39.031m	38.498
Target Compounds						
26) L6 AR-1254-1	7.323	6.467	16540831	15848691	51.122	43.567
27) L6 AR-1254-2	7.551	6.625	25928282	17408199	52.222	54.049
28) L6 AR-1254-3	7.933	7.053	29099111	29350868	54.671	52.914
29) L6 AR-1254-4	8.227	7.291	21335482	19704435	55.232	55.129
30) L6 AR-1254-5	8.657	7.724	26551738	29259799	61.465	58.517

J A-J
 11/16/19

(f)=RT Delta > 1/2 Window (#)=Amounts differ by > 25% (m)=manual int.