

Data Path : Z:\pestpcbsrv\HPCHEM1\ECD_Q\Data\PQ111818\
 Data File : PQ034669.D
 Signal(s) : Signal #1: ECD1A.ch Signal #2: ECD2B.ch
 Acq On : 16 Nov 2018 17:57
 Operator : SM\SJ
 Sample : J5959-02
 Misc :
 ALS Vial : 12 Sample Multiplier: 1

Instrument :
 ECD_Q
 ClientSampleId :
 111418-SIDI-E-D-S

Integration File signal 1: autoint1.e
 Integration File signal 2: autoint2.e
 Quant Time: Nov 16 22:11:57 2018
 Quant Method : Z:\pestpcbsrv\HPCHEM1\ECD_Q\Method\PQ110618.M
 Quant Title : GC EXTRACTABLES
 QLast Update : Fri Nov 09 08:12:53 2018
 Response via : Initial Calibration
 Integrator: ChemStation

Volume Inj. : 2 µl
 Signal #1 Phase : ZB-MR2 Signal #2 Phase: ZB-MR2
 Signal #1 Info : 30Mx0.32mmx 0.50µ Signal #2 Info : 30M x 0.32mm x 0.25µm

Compound	RT#1	RT#2	Resp#1	Resp#2	ng/ml	ng/ml

System Monitoring Compounds						
1) SA Tetrachlo...	4.539	3.821	41172561	24322758	14.046	12.743
2) SA Decachlor...	10.330	8.846	40718922	28301353	15.863	14.402
Target Compounds						
3) L1 AR-1016-1	0.000	4.909	0	1263724	N.D.	17.890 #
4) L1 AR-1016-2	0.000	4.909	0	1263724	N.D.	12.536 #
6) L1 AR-1016-4	5.980	0.000	1156670	0	17.038	N.D. #
8) L2 AR-1221-1	0.000	3.991	0	1009324	N.D.	48.159 #
10) L2 AR-1221-3	4.929	4.261	3345029	2318307	49.235	45.420
11) L3 AR-1232-1	4.929	4.261	3345029	2318307	64.901	61.271
12) L3 AR-1232-2	0.000	4.909	0	1263724	N.D.	31.797 #
14) L3 AR-1232-4	5.980	0.000	1156670	0	41.421	N.D. #
15) L3 AR-1232-5	6.010	0.000	1437856	0	71.639	N.D. #
16) L4 AR-1242-1	0.000	4.909	0	1263724	N.D.	22.866 #
17) L4 AR-1242-2	0.000	4.909	0	1263724	N.D.	15.805 #
19) L4 AR-1242-4	5.980	0.000	1156670	0	20.148	N.D. #
21) L5 AR-1248-1	0.000	4.909	0	1263724	N.D.	27.256 #
22) L5 AR-1248-2	6.010	0.000	1437856	0	15.424	N.D. #
27) L6 AR-1254-2	6.832	0.000	4116695	0	22.955	N.D. #
31) L7 AR-1260-1	0.000	6.382	0	2243869	N.D.	19.497 #
32) L7 AR-1260-2	7.632	0.000	7621053	0	44.279	N.D. #
33) L7 AR-1260-3	7.962	0.000	1420096	0	13.942	N.D. #
36) L8 AR-1262-1	7.962	0.000	1420096	0	7.709	N.D. #

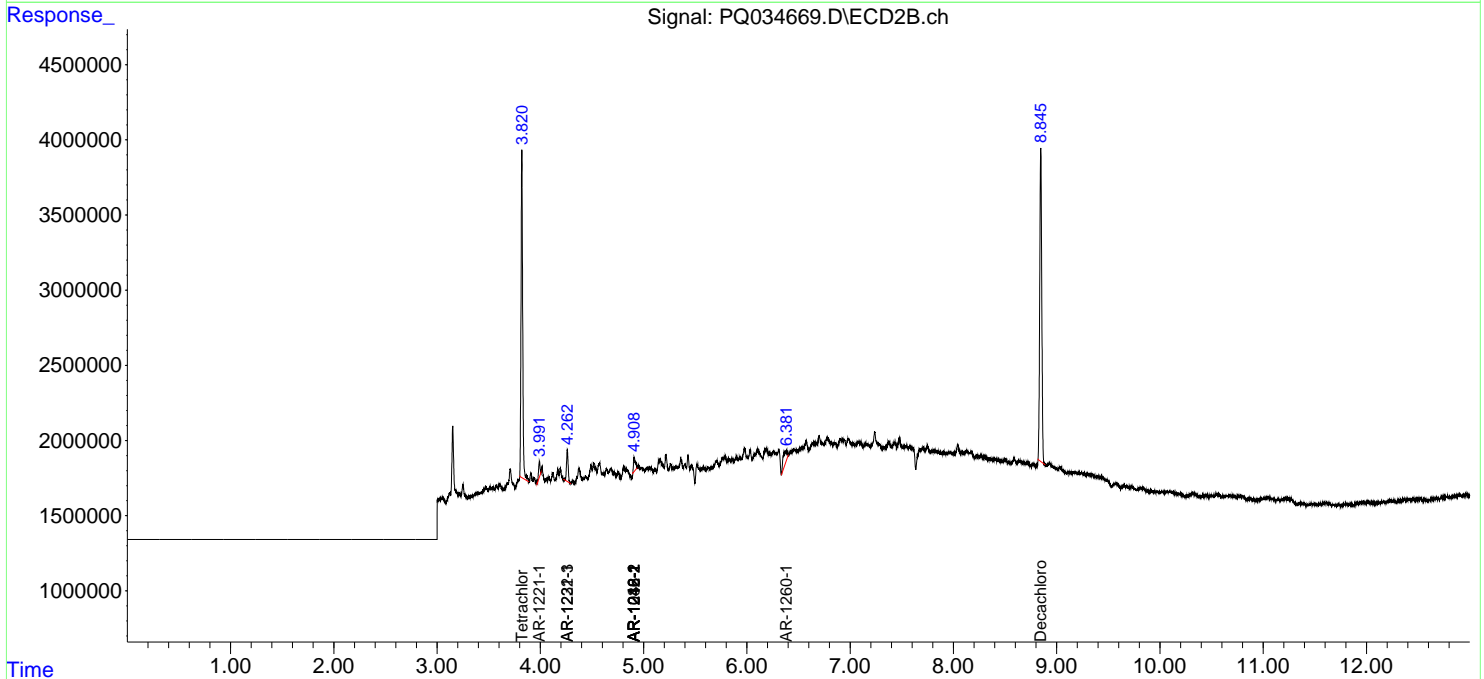
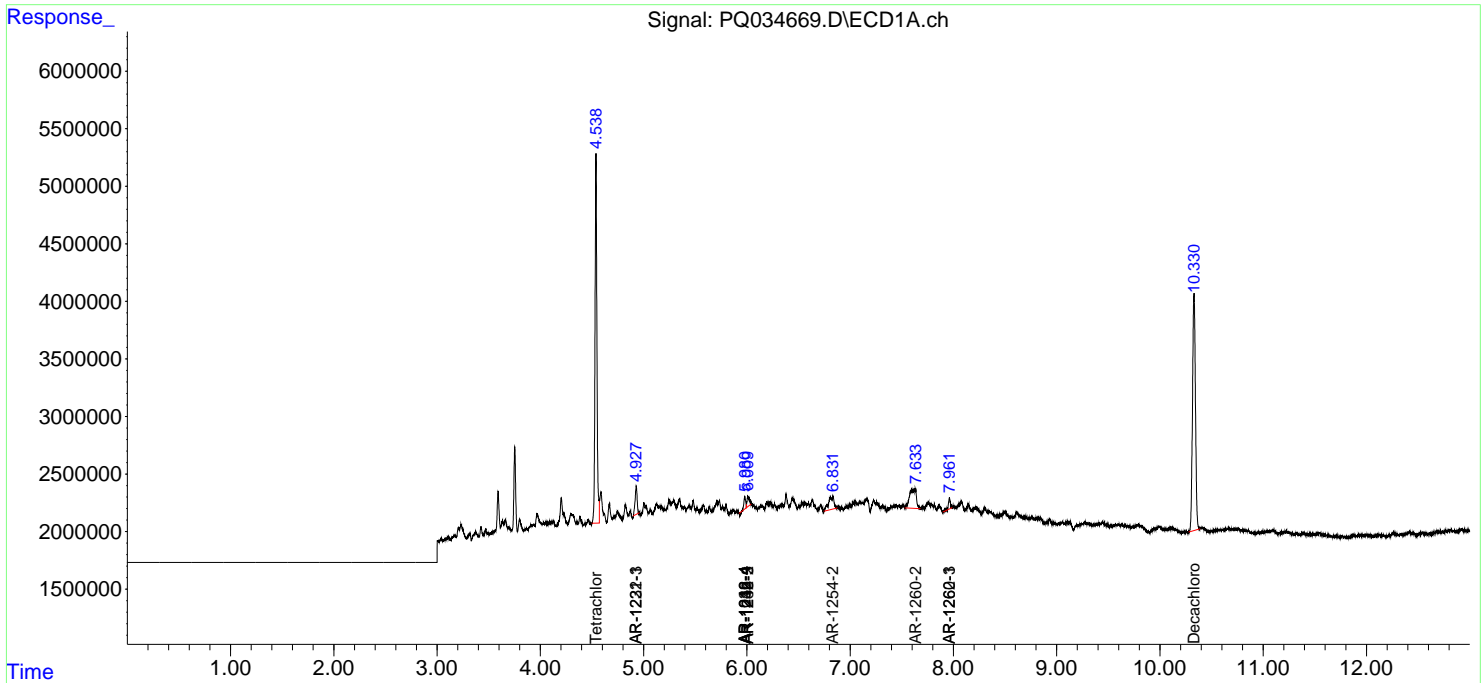
(f)=RT Delta > 1/2 Window (#)=Amounts differ by > 25% (m)=manual int.

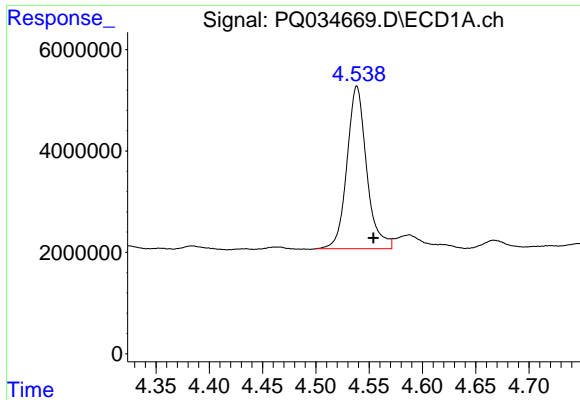
Data Path : Z:\pestpcbsrv\HPCHEM1\ECD_Q\Data\PQ111818\
 Data File : PQ034669.D
 Signal(s) : Signal #1: ECD1A.ch Signal #2: ECD2B.ch
 Acq On : 16 Nov 2018 17:57
 Operator : SM\SJ
 Sample : J5959-02
 Misc :
 ALS Vial : 12 Sample Multiplier: 1

Instrument :
 ECD_Q
 ClientSampleId :
 111418-SIDI-E-D-S

Integration File signal 1: autoint1.e
 Integration File signal 2: autoint2.e
 Quant Time: Nov 16 22:11:57 2018
 Quant Method : Z:\pestpcbsrv\HPCHEM1\ECD_Q\Method\PQ110618.M
 Quant Title : GC EXTRACTABLES
 QLast Update : Fri Nov 09 08:12:53 2018
 Response via : Initial Calibration
 Integrator: ChemStation

Volume Inj. : 2 µl
 Signal #1 Phase : ZB-MR1 Signal #2 Phase: ZB-MR2
 Signal #1 Info : 30Mx0.32mmx 0.50µ Signal #2 Info : 30M x 0.32mm x 0.25µm

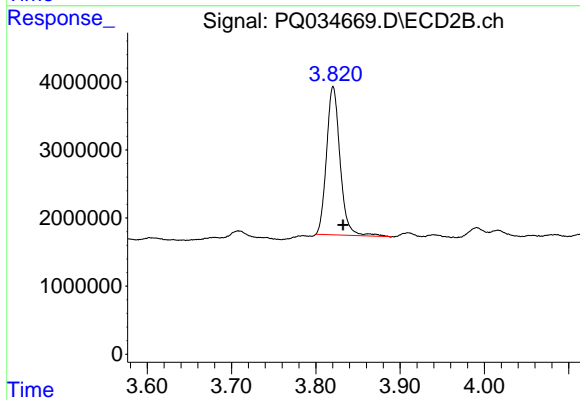




#1 Tetrachloro-m-xylene

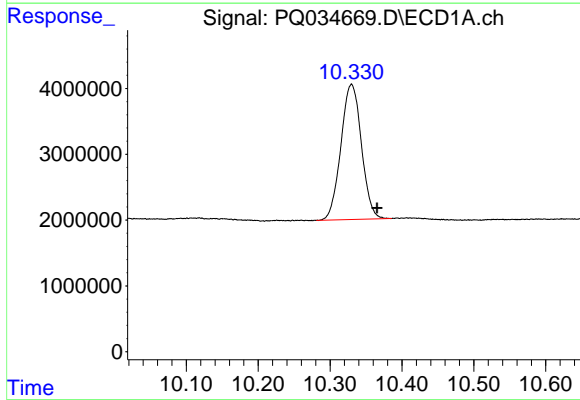
R.T.: 4.539 min
 Delta R.T.: -0.016 min
 Response: 41172561
 Conc: 14.05 ng/ml

Instrument :
 ECD_Q
 ClientSampleId :
 111418-SIDI-E-D-S



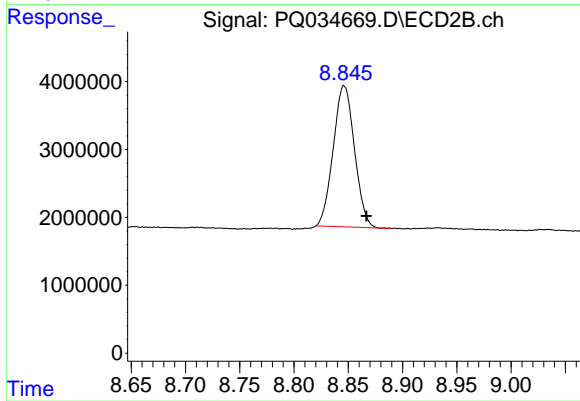
#1 Tetrachloro-m-xylene

R.T.: 3.821 min
 Delta R.T.: -0.012 min
 Response: 24322758
 Conc: 12.74 ng/ml



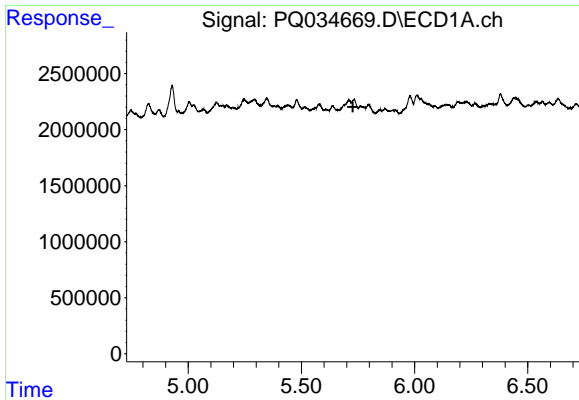
#2 Decachlorobiphenyl

R.T.: 10.330 min
 Delta R.T.: -0.035 min
 Response: 40718922
 Conc: 15.86 ng/ml



#2 Decachlorobiphenyl

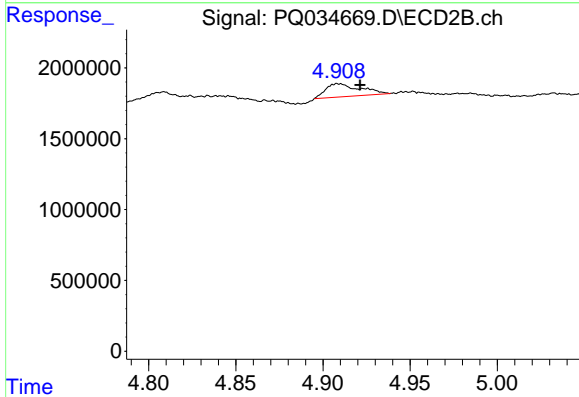
R.T.: 8.846 min
 Delta R.T.: -0.020 min
 Response: 28301353
 Conc: 14.40 ng/ml



#3 AR-1016-1

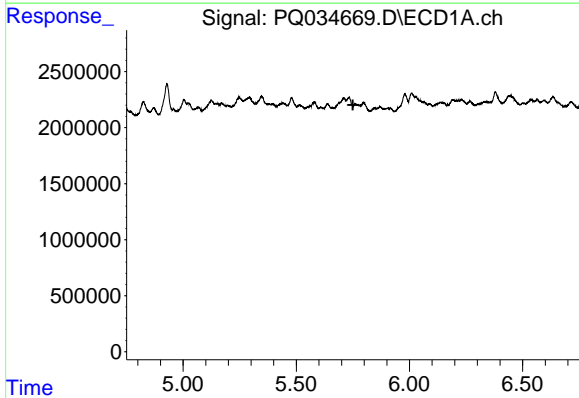
R.T.: 0.000 min
 Exp R.T. : 5.728 min
 Response: 0
 Conc: N.D.

Instrument :
 ECD_Q
 ClientSampleId :
 111418-SIDI-E-D-S



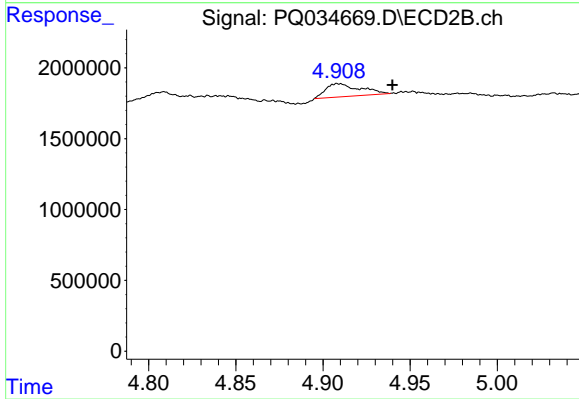
#3 AR-1016-1

R.T.: 4.909 min
 Delta R.T.: -0.013 min
 Response: 1263724
 Conc: 17.89 ng/ml



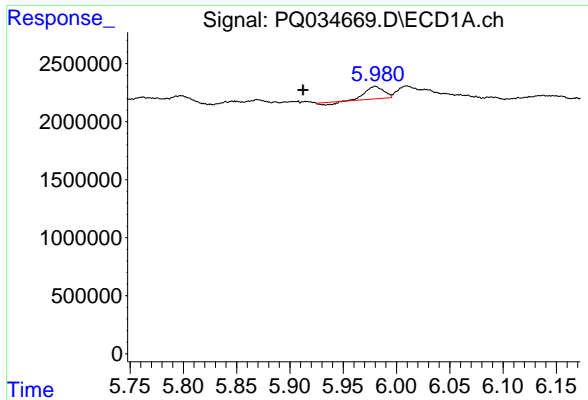
#4 AR-1016-2

R.T.: 0.000 min
 Exp R.T. : 5.750 min
 Response: 0
 Conc: N.D.



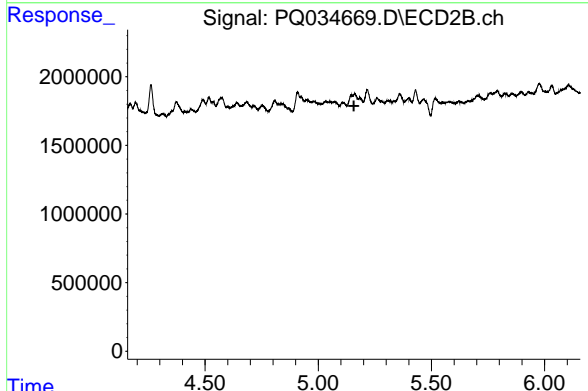
#4 AR-1016-2

R.T.: 4.909 min
 Delta R.T.: -0.031 min
 Response: 1263724
 Conc: 12.54 ng/ml

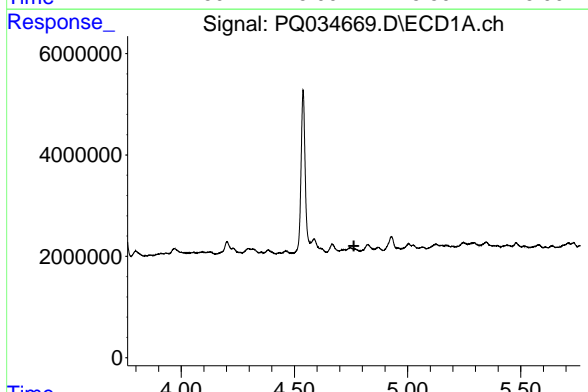


#6 AR-1016-4
 R.T.: 5.980 min
 Delta R.T.: 0.068 min
 Response: 1156670
 Conc: 17.04 ng/ml

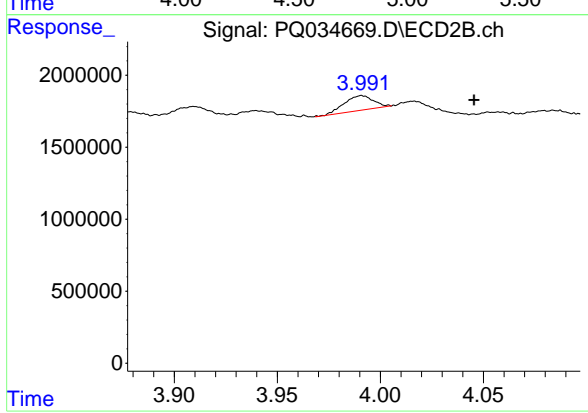
Instrument :
 ECD_Q
ClientSampleId :
 111418-SIDI-E-D-S



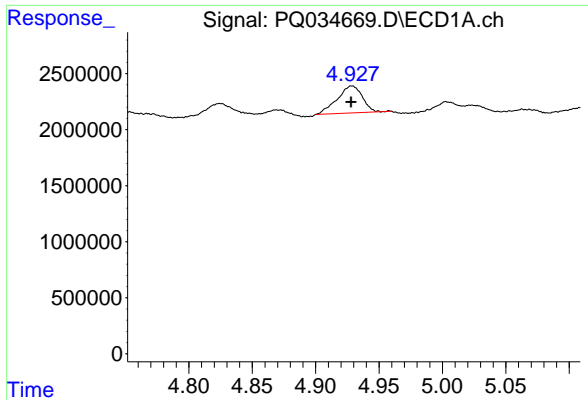
#6 AR-1016-4
 R.T.: 0.000 min
 Exp R.T. : 5.158 min
 Response: 0
 Conc: N.D.



#8 AR-1221-1
 R.T.: 0.000 min
 Exp R.T. : 4.763 min
 Response: 0
 Conc: N.D.



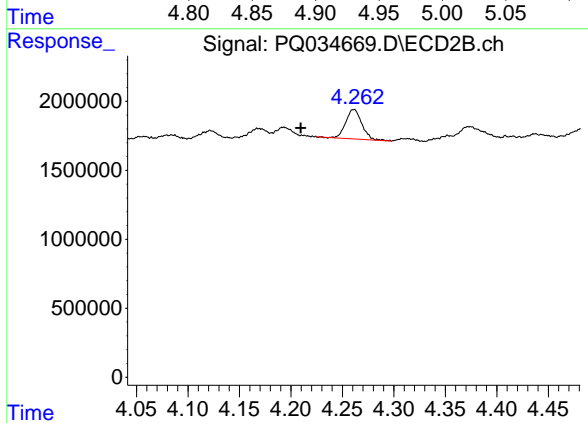
#8 AR-1221-1
 R.T.: 3.991 min
 Delta R.T.: -0.055 min
 Response: 1009324
 Conc: 48.16 ng/ml



#10 AR-1221-3

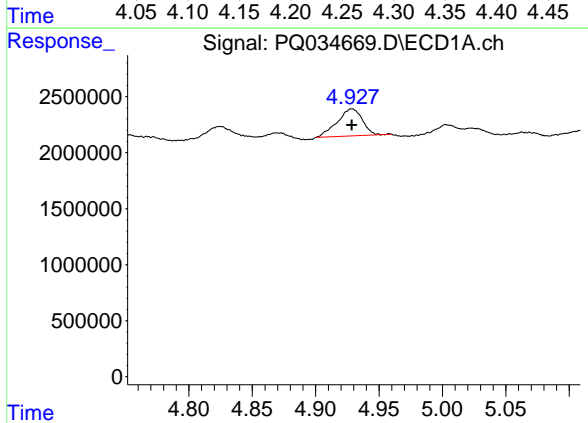
R.T.: 4.929 min
 Delta R.T.: 0.000 min
 Response: 3345029
 Conc: 49.24 ng/ml

Instrument :
 ECD_Q
 ClientSampleId :
 111418-SIDI-E-D-S



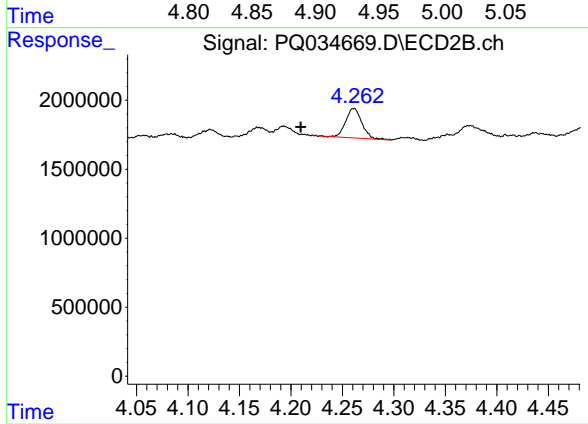
#10 AR-1221-3

R.T.: 4.261 min
 Delta R.T.: 0.052 min
 Response: 2318307
 Conc: 45.42 ng/ml



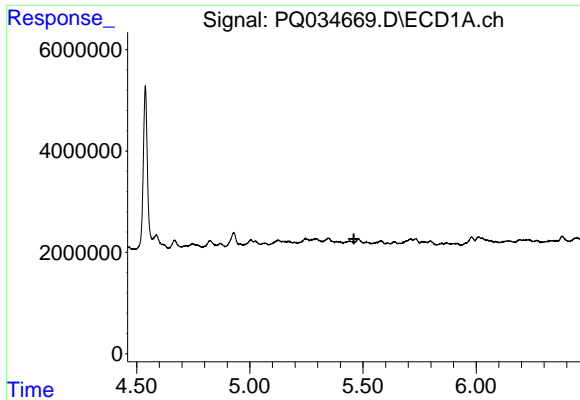
#11 AR-1232-1

R.T.: 4.929 min
 Delta R.T.: 0.000 min
 Response: 3345029
 Conc: 64.90 ng/ml



#11 AR-1232-1

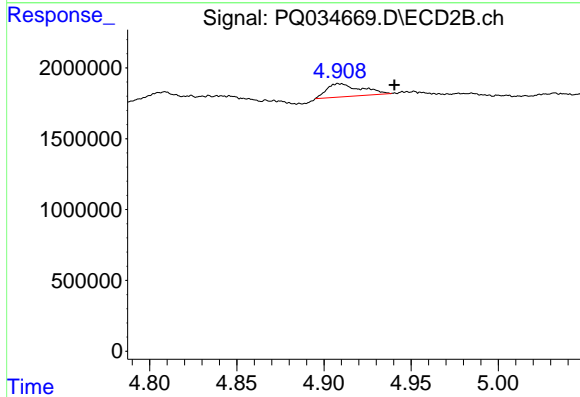
R.T.: 4.261 min
 Delta R.T.: 0.052 min
 Response: 2318307
 Conc: 61.27 ng/ml



#12 AR-1232-2

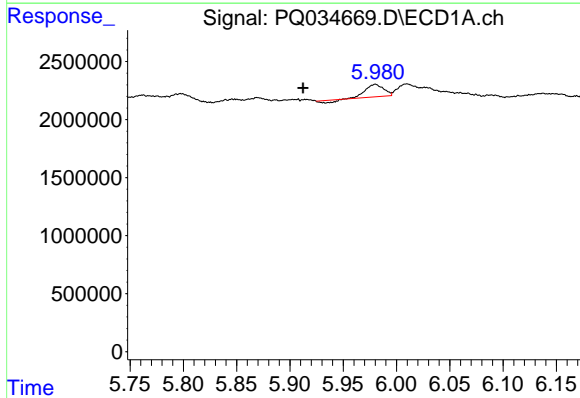
R.T.: 0.000 min
 Exp R.T. : 5.460 min
 Response: 0
 Conc: N.D.

Instrument :
 ECD_Q
 ClientSampleId :
 111418-SIDI-E-D-S



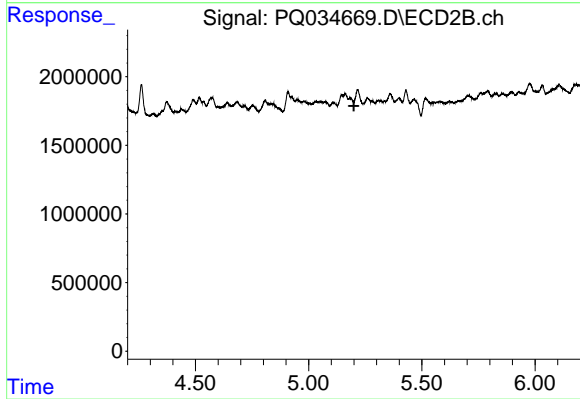
#12 AR-1232-2

R.T.: 4.909 min
 Delta R.T.: -0.032 min
 Response: 1263724
 Conc: 31.80 ng/ml



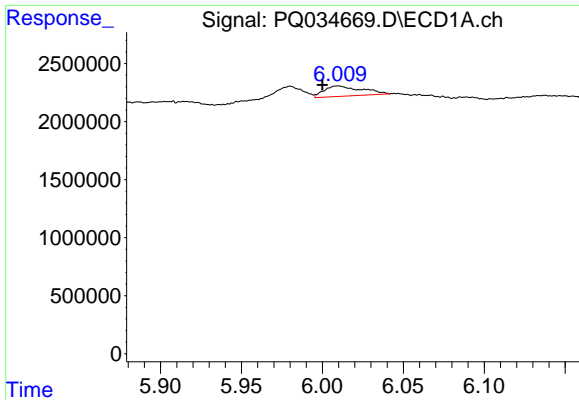
#14 AR-1232-4

R.T.: 5.980 min
 Delta R.T.: 0.068 min
 Response: 1156670
 Conc: 41.42 ng/ml



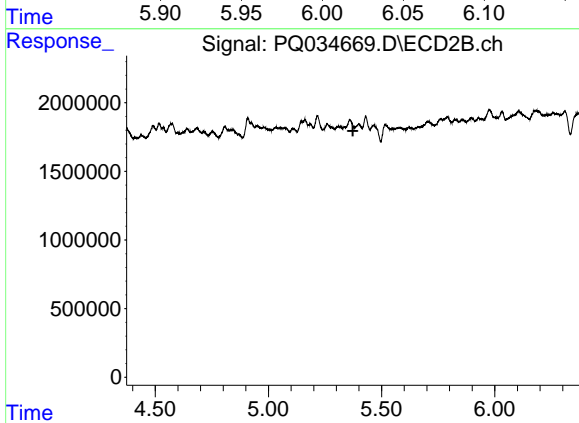
#14 AR-1232-4

R.T.: 0.000 min
 Exp R.T. : 5.200 min
 Response: 0
 Conc: N.D.

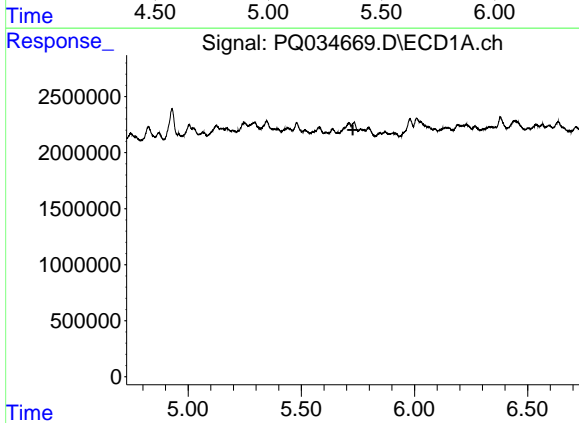


#15 AR-1232-5
 R.T.: 6.010 min
 Delta R.T.: 0.010 min
 Response: 1437856
 Conc: 71.64 ng/ml

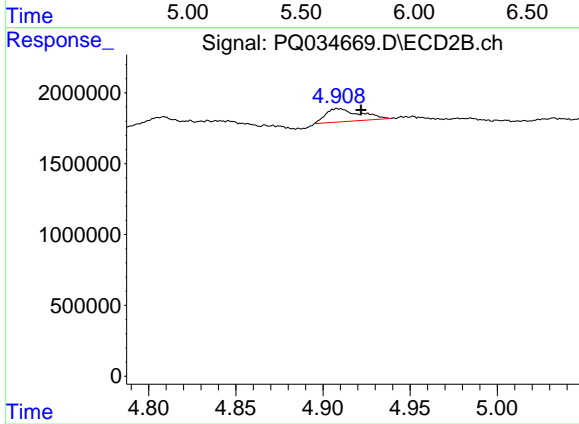
Instrument :
 ECD_Q
 ClientSampleId :
 111418-SIDI-E-D-S



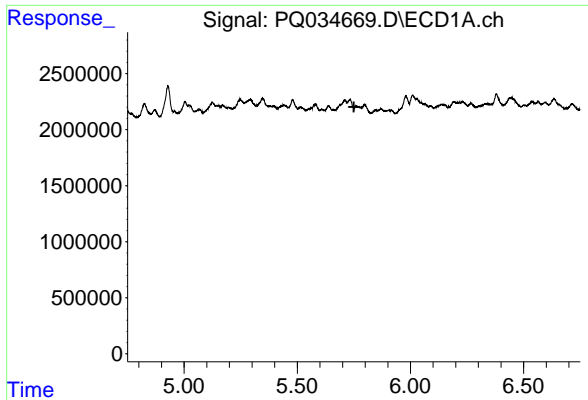
#15 AR-1232-5
 R.T.: 0.000 min
 Exp R.T. : 5.373 min
 Response: 0
 Conc: N.D.



#16 AR-1242-1
 R.T.: 0.000 min
 Exp R.T. : 5.728 min
 Response: 0
 Conc: N.D.



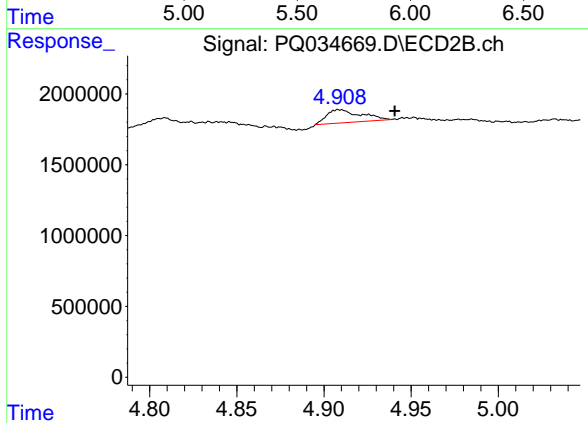
#16 AR-1242-1
 R.T.: 4.909 min
 Delta R.T.: -0.013 min
 Response: 1263724
 Conc: 22.87 ng/ml



#17 AR-1242-2

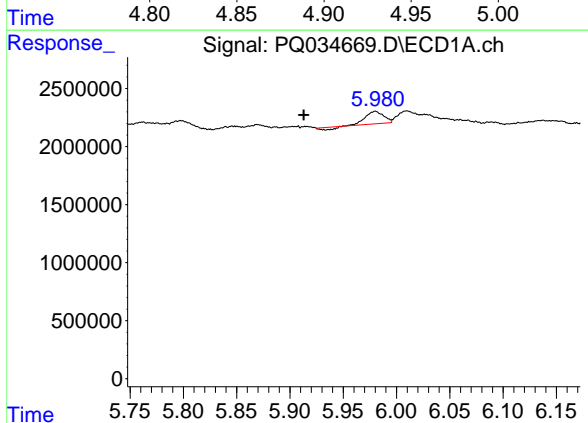
R.T.: 0.000 min
 Exp R.T.: 5.750 min
 Response: 0
 Conc: N.D.

Instrument :
 ECD_Q
 ClientSampleId :
 111418-SIDI-E-D-S



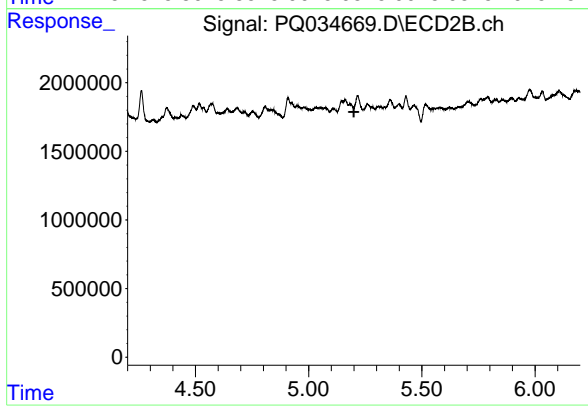
#17 AR-1242-2

R.T.: 4.909 min
 Delta R.T.: -0.032 min
 Response: 1263724
 Conc: 15.81 ng/ml



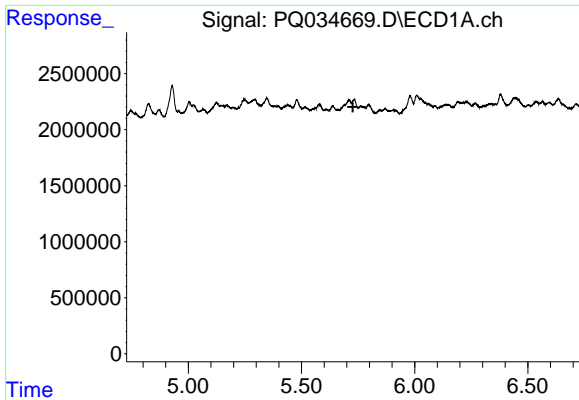
#19 AR-1242-4

R.T.: 5.980 min
 Delta R.T.: 0.067 min
 Response: 1156670
 Conc: 20.15 ng/ml



#19 AR-1242-4

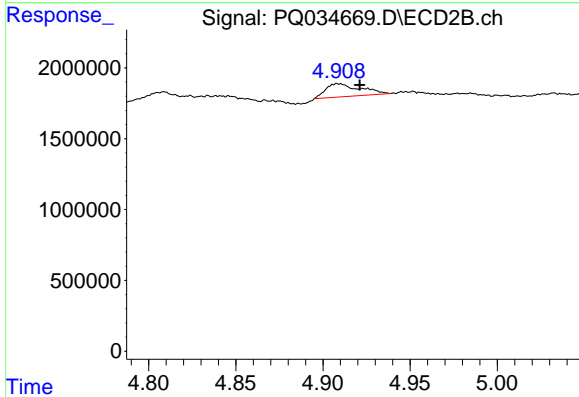
R.T.: 0.000 min
 Exp R.T.: 5.200 min
 Response: 0
 Conc: N.D.



#21 AR-1248-1

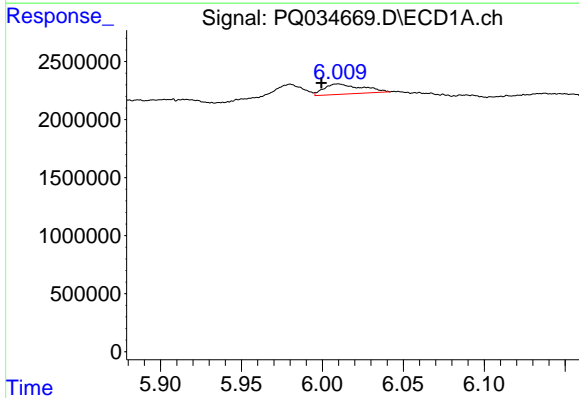
R.T.: 0.000 min
 Exp R.T. : 5.727 min
 Response: 0
 Conc: N.D.

Instrument :
 ECD_Q
 ClientSampleId :
 111418-SIDI-E-D-S



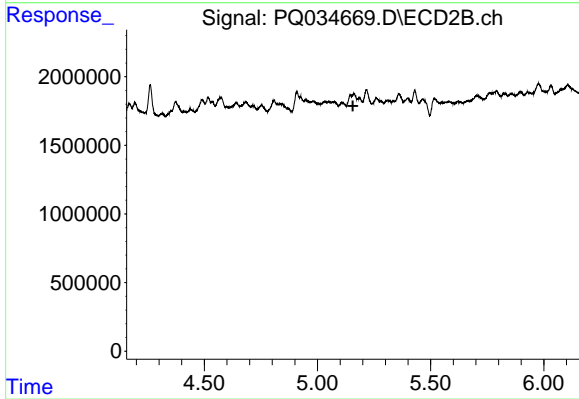
#21 AR-1248-1

R.T.: 4.909 min
 Delta R.T.: -0.012 min
 Response: 1263724
 Conc: 27.26 ng/ml



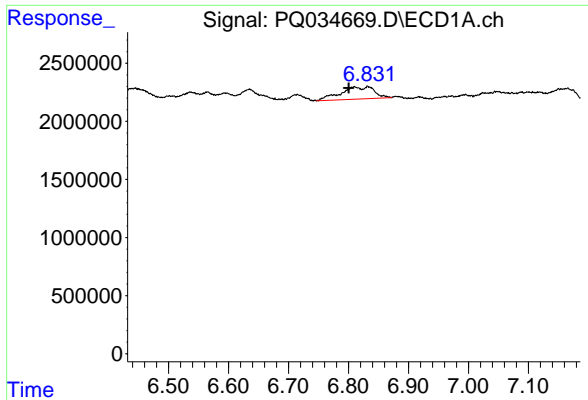
#22 AR-1248-2

R.T.: 6.010 min
 Delta R.T.: 0.010 min
 Response: 1437856
 Conc: 15.42 ng/ml



#22 AR-1248-2

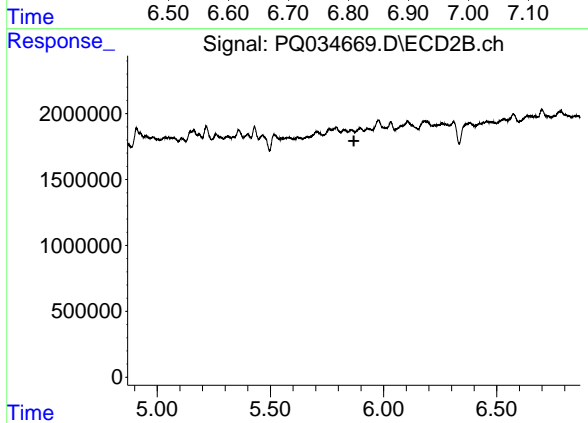
R.T.: 0.000 min
 Exp R.T. : 5.157 min
 Response: 0
 Conc: N.D.



#27 AR-1254-2

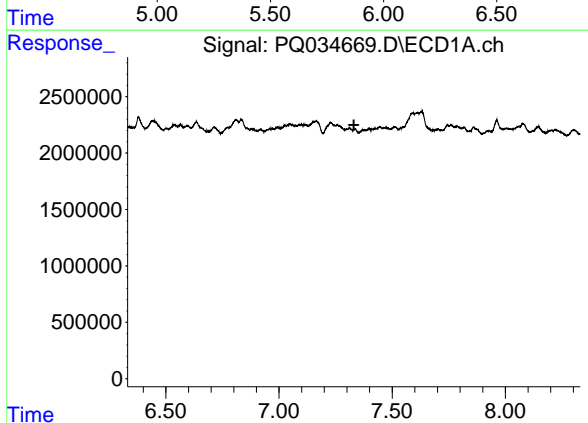
R.T.: 6.832 min
 Delta R.T.: 0.032 min
 Response: 4116695
 Conc: 22.96 ng/ml

Instrument :
 ECD_Q
 ClientSampleId :
 111418-SIDI-E-D-S



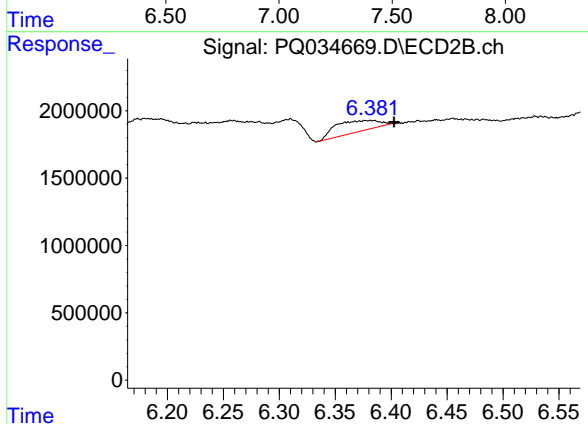
#27 AR-1254-2

R.T.: 0.000 min
 Exp R.T. : 5.869 min
 Response: 0
 Conc: N.D.



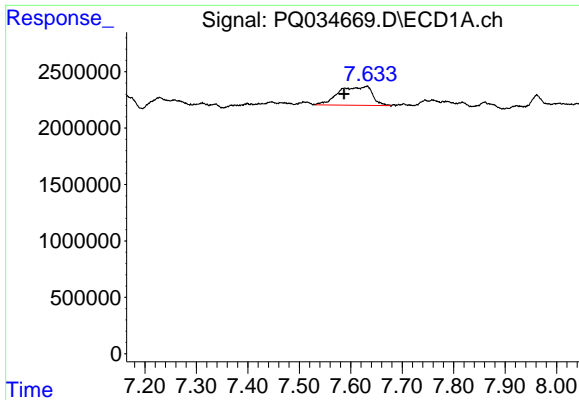
#31 AR-1260-1

R.T.: 0.000 min
 Exp R.T. : 7.331 min
 Response: 0
 Conc: N.D.



#31 AR-1260-1

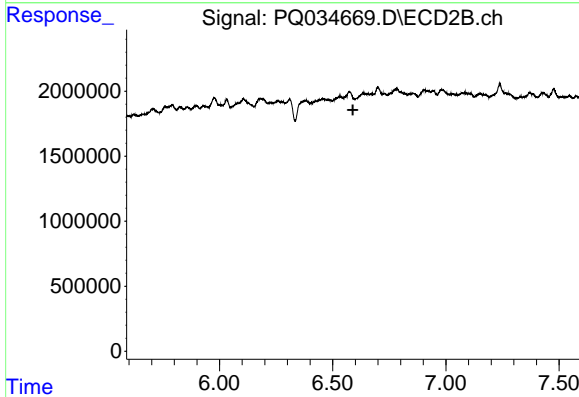
R.T.: 6.382 min
 Delta R.T.: -0.021 min
 Response: 2243869
 Conc: 19.50 ng/ml



#32 AR-1260-2

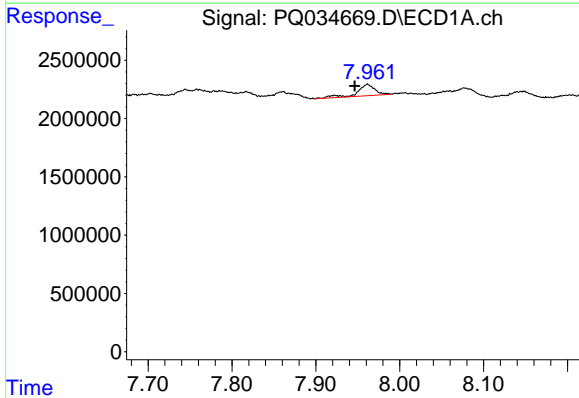
R.T.: 7.632 min
 Delta R.T.: 0.045 min
 Response: 7621053
 Conc: 44.28 ng/ml

Instrument :
 ECD_Q
ClientSampleId :
 111418-SIDI-E-D-S



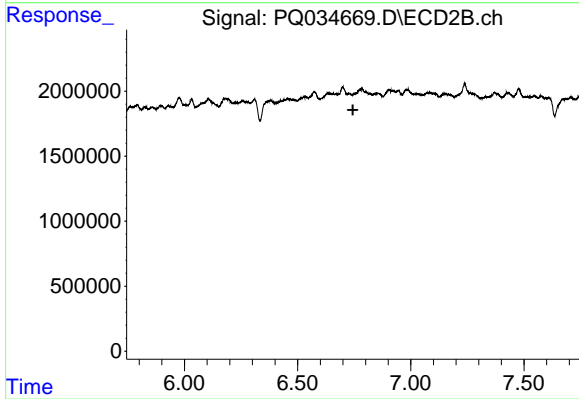
#32 AR-1260-2

R.T.: 0.000 min
 Exp R.T. : 6.589 min
 Response: 0
 Conc: N.D.



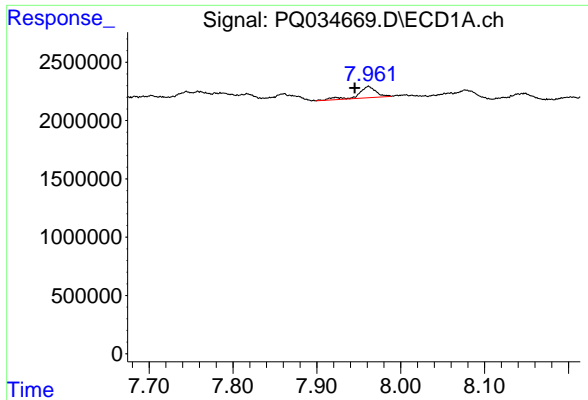
#33 AR-1260-3

R.T.: 7.962 min
 Delta R.T.: 0.015 min
 Response: 1420096
 Conc: 13.94 ng/ml



#33 AR-1260-3

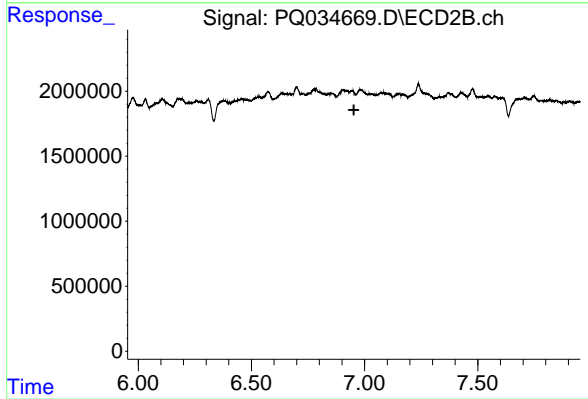
R.T.: 0.000 min
 Exp R.T. : 6.744 min
 Response: 0
 Conc: N.D.



#36 AR-1262-1

R.T.: 7.962 min
 Delta R.T.: 0.016 min
 Response: 1420096
 Conc: 7.71 ng/ml

Instrument :
 ECD_Q
 ClientSampleId :
 111418-SIDI-E-D-S



#36 AR-1262-1

R.T.: 0.000 min
 Exp R.T. : 6.953 min
 Response: 0
 Conc: N.D.